

Multiscale Modeling of Liquids with Molecular Specificity

G. De Fabritiis,^{1,*} R. Delgado-Buscalioni,^{2,†} and P. V. Coveney^{1,‡}

¹Centre for Computational Science, Department of Chemistry, University College London, 20 Gordon Street, WC1H 0AJ London, United Kingdom

²Departamento de Ciencias y Técnicas Fisicoquímicas, Facultad de Ciencias, UNED, Paseo Senda del Rey 9, Madrid 28040, Spain
(Received 22 May 2006; published 25 September 2006)

The separation between molecular and mesoscopic length and time scales poses a severe limit to molecular simulations of mesoscale phenomena. We describe a hybrid multiscale computational technique which addresses this problem by keeping the full molecular nature of the system where it is of interest and coarse graining it elsewhere. This is made possible by coupling molecular dynamics with a mesoscopic description of realistic liquids based on Landau's fluctuating hydrodynamics. We show that our scheme correctly couples hydrodynamics and that fluctuations, at both the molecular and continuum levels, are thermodynamically consistent. Hybrid simulations of sound waves in bulk water and reflected by a lipid monolayer are presented as illustrations of the scheme.

DOI: 10.1103/PhysRevLett.97.134501

PACS numbers: 47.11.St, 47.11.-j, 83.10.Rs

Complex multiscale phenomena are ubiquitous in nature in solid (fracture propagation [1]), gas (Knudsen layers [2]), and liquid phases (fluid slippage past surfaces [3], crystal growth from a fluid phase, wetting, membrane-fluid dynamics, vibrational properties of proteins in water [4,5], and so on). These phenomena are driven by atomistic forces but manifest themselves at larger, mesoscopic, and macroscopic scales which cannot be resolved by purely large scale molecular simulations (with some notable exceptions [6]). On the other hand, coarse-grained mesoscopic models have limited use due to the approximations necessary to treat the molecular scales intrinsic to these methods. A viable solution to this dilemma is represented by multiscale modeling via coupled models, a protocol which is also well suited to new distributed computing paradigms such as grids [7,8]. The idea behind this approach is simple: concurrent, coupled use of different physical descriptions.

The coupled paradigm is the underlying concept in quantum-classical mechanics hybrid schemes [1] used to describe fracture propagation in brittle materials and also in hybrid models of gas flow [2]. During the past decade, hybrid modeling of liquids has received important contributions from several research groups (see the recent review [9]). However, it has thus far lacked the maturity to become a standard research tool for liquid and soft condensed matter systems. Hybrid simulations of liquids have been restricted to coarse-grained descriptions based on Lennard-Jones particles, reducing the major advantage of this technique of maintaining full molecular specificity where needed. Recently, new methods for energy controlled insertion of water molecules [10] have finally opened the way to treat real solvents such as water. So far, no hybrid method has employed an accurate description of the mesoscale (from nanometers to micrometers) as the important contribution of fluctuations has been neglected in the embedding coarse-grained liquid. The hybrid method must also ensure thermodynamic consistency, by allowing the

open molecular system to relax to an equilibrium state consistent with the grand-canonical ensemble [11]. Finally, all previous nonequilibrium hybrid simulations have been restricted to shear flow [9,12].

In this Letter, we present a coupled multiscale model called “hybrid molecular dynamics” (MD) for simulation of mesoscopic quantities of liquids (water) embedding a nanoscopic molecular domain [Fig. 1(a)]. Hybrid MD overcomes the limitations of previous hybrid descriptions of liquids by coupling fluctuating hydrodynamics [13] and classical molecular dynamics via a protocol which guarantees mass and momentum conservation. The present method is designed to address phenomena driven by the interplay between the solute-solvent molecular interaction and the hydrodynamic flow of the solvent.

Fluctuating hydrodynamics model.—Our mesoscopic description of fluid flow is based on the equations of

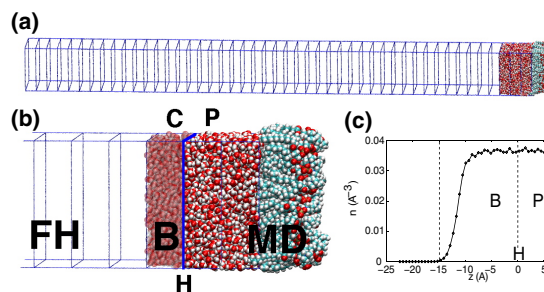


FIG. 1 (color online). (a) The setup used for our hybrid molecular simulations and (b) a close-up of the hybrid interface. The FH description, resolved by the finite volume method, is coupled to a molecular model (MD) representing a dimyristoylphosphatidylcholine (DMPC) lipid monolayer solvated with water and restrained at the lipid head groups. We indicate by “P” and “C,” respectively, the particle and continuum cells adjacent to the hybrid interface “H.” The buffer region of the MD system “B” (overlapping the C cell) is indicated by translucent water molecules, and the water molecule density in the buffer region is shown in (c).

fluctuating hydrodynamics (FH) [13]. These equations are stochastic partial differential equations which reduce to the Navier-Stokes equations in the limit of large volumes. The equations are based on the conservation equations $\partial_t \phi = -\nabla \cdot \mathbf{J}^\phi$, where $\phi = \phi(\mathbf{r}, t)$ is the density of any conserved variable at location \mathbf{r} . We consider an isothermal fluid, so that the relevant variables are the mass and momentum densities $\phi = \{\rho, \mathbf{g}\}$ (here $\mathbf{g} \equiv \rho \mathbf{v}$ and \mathbf{v} is the fluid velocity). The mass and momentum fluxes are given by $\mathbf{J}^\rho = \rho \mathbf{v}$ and $\mathbf{J}^g = \rho \mathbf{v} \mathbf{v} + \mathbf{\Pi} + \tilde{\mathbf{\Pi}}$, where $\mathbf{\Pi}$ and $\tilde{\mathbf{\Pi}}$ are the mean and fluctuating contributions to the pressure tensor, respectively. The mean pressure tensor is usually decomposed as $\mathbf{\Pi} = (p + \pi) \mathbf{1} + \mathbf{\Pi}^S$, where p is the thermodynamic pressure (given by the equation of state) and the stress tensor is the sum of a traceless symmetric tensor $\mathbf{\Pi}^S$ and an isotropic stress π . We consider a Newtonian fluid for which $\mathbf{\Pi}_{\alpha\beta}^S = -\eta(\partial_\alpha v_\beta + \partial_\beta v_\alpha - 2D^{-1} \partial_\gamma v_\gamma \delta_{\alpha\beta})$, $\pi = -\zeta \partial_\gamma v_\gamma$, where repeated indices are summed, D is the spatial dimension, and η and ζ are the shear and bulk viscosities, respectively. The components of the fluctuating pressure tensor $\tilde{\mathbf{\Pi}}_{\alpha\beta}$ are random Gaussian numbers [14].

Our continuum mesoscopic model is based on a finite volume discretization of the FH equations [15], although here in an Eulerian frame of reference and on a regular lattice. Partitioning the space into several space-filling volumes V_k , with $k = 1, \dots, N$, centered at positions \mathbf{r}_k , we integrate the conservation equations over each volume V_k and apply Gauss' theorem $\frac{d}{dt} \int_{V_k} \phi(\mathbf{r}_k, t) d\mathbf{r} = \sum_l A_{kl} \mathbf{J}_{kl}^\phi \cdot \mathbf{e}_{kl}$, where \mathbf{e}_{kl} is the unit surface vector pointing towards cell k , and A_{kl} is the surface area connecting cells k and l . We then derive the following stochastic equations for mass and momentum exchange:

$$dM_k^t = \sum_l \mathbf{g}_{kl} \cdot \mathbf{e}_{kl} A_{kl} dt, \quad (1)$$

$$d\mathbf{P}_k^t = \sum_l \left[\frac{\mathbf{\Pi}_l}{2} \cdot \mathbf{e}_{kl} + \mathbf{g}_{kl} \cdot \mathbf{e}_{kl} \mathbf{v}_{kl} \right] A_{kl} dt + d\tilde{\mathbf{P}}_k^t, \quad (2)$$

where $d\tilde{\mathbf{P}}_k^t$ is the momentum exchange due to the fluctuating pressure tensor $\tilde{\mathbf{\Pi}}_k$, $\mathbf{v}_{kl} = \mathbf{v}_k - \mathbf{v}_l$, and \mathbf{g}_{kl} is approximated on the surface kl by $\mathbf{g}_{kl} = \frac{1}{2}(\rho_k + \rho_l) \frac{1}{2}(\mathbf{v}_k + \mathbf{v}_l)$. To close the discrete conservation equations, we have to devise a discretization of the dissipative and fluctuating parts which ensures the validity of the fluctuation-dissipation theorem. By choosing the discretization of the gradients $\partial^\alpha \phi_k \rightarrow \sum_l A_{kl} \mathbf{e}_{kl}^\alpha \phi_{kl} / (2V_k)$, the discrete momentum fluxes $\mathbf{\Pi}_k$ and $d\tilde{\mathbf{P}}_k^t$ take the form given in Ref. [15]. The resulting set of stochastic differential equations (1) and (2), may be integrated using various stochastic integration schemes [16]; in this work, we have used a simple Euler scheme.

Molecular dynamics.—The molecular description is based on classical molecular dynamics and the CHARMM27 force field [incorporating the three-point transferable intermolecular potential (TIP3P) parametrization] which specifies bond, angle, dihedral and improper

bonded interactions, and nonbonded Lennard-Jones 6–12 and Coulomb interactions. The code is derived from a stripped down version of NAMD [17]. We use a dissipative particle dynamics (DPD) thermostat [18], ensuring local momentum conservation in such a way that hydrodynamic modes are not destroyed.

Coupling protocol.—In our computational implementation, the MD and FH components are independent *coupled models* [8] which exchange information after every fixed time interval Δt_c . We set $\Delta t_c = n_{\text{FH}} \Delta t = n_{\text{MD}} \delta t$, where Δt and δt are the FH and MD time steps, and n_{FH} and n_{MD} are integers which depend on the system being modeled; e.g., for water as solvent, $\Delta t_c = 100$ fs, $n_{\text{FH}} = 10$, and $n_{\text{MD}} = 100$. Conservation is based on the flux balance: Both domains receive equal but opposite mass and momentum fluxes across the hybrid interface. This interface (H) uniquely defines the total system [MD + FH; see Fig. 1(b)] and, importantly, the total quantities to be conserved. This contrasts with previous schemes [9] where particle and continuum domains intertwine within a larger overlapping region, preventing a clear definition of the system.

The rate of momentum transferred across the hybrid interface is given by $\mathbf{F}_H = A \mathbf{J}_H^g \cdot \mathbf{e}_\perp$, where \mathbf{e}_\perp is the unit vector perpendicular to the surface and the momentum flux tensor at H is approximated as $\mathbf{J}_H^g = (\mathbf{J}_P^g + \mathbf{J}_C^g)/2$. Note that \mathbf{J}_C^g involves the evaluation of the discretized velocity gradient at C and, thus, requires the mass and momentum of the MD system at the neighboring P cell averaged over the coupling time Δt_c : $\langle M_P \rangle_{\Delta t_c}$ and $\langle \mathbf{P}_P \rangle_{\Delta t_c}$, respectively [see Fig. 1(b)]. On the other hand, the momentum flux tensor at the P cell can be computed for the microstate using the kinetic theory formula $\mathbf{J}_P^g = \langle [\rho \mathbf{v}_i \mathbf{v}_i + W_i] \rangle_{\Delta t_c}$, with $i \in P$ and $W_i = \sum_j \mathbf{r}_{ij} \cdot \mathbf{f}_{ij}$ [19] being the contribution of atom i to the virial. Alternatively, \mathbf{J}_P^g can be computed by introducing the coarse-grained variables at the neighboring MD and FH cells into the discretized Newtonian constitutive relation. Both approaches provide equivalent results in terms of mean and variance of the pressure tensor.

The force \mathbf{F}_H at the hybrid interface is imposed on the FH domain using standard von Neumann boundary conditions. In order to impose the force $-\mathbf{F}_H$ on the molecular system, we extend the MD domain to an extra buffer cell [“ B ” in Fig. 1(b)]. Particles are free to cross the hybrid interface according to their local dynamics, but any atom that enters B will experience an external force $-\mathbf{F}_H/N_B$ which transfers the external pressure and stress. The number of solvent molecules within the buffer $N_B(t)$ is controlled by a simple relaxation algorithm: $\Delta N_B = (\langle N_B \rangle - N_B) \Delta t_c / \tau_B$, with $\tau_B \approx 500$ fs. The average $\langle N_B \rangle$ is set so as to ensure that B always contains enough molecules to support the momentum transfer; here we use $\langle N_B \rangle = 0.75 M_C / m$, where M_C is the mass of the continuum cell C and m is the molecular mass. Figure 1(c) shows the equilibrium number density profile of water at

the buffer. Importantly, the density profile is flat around the hybrid interface. Because of the external pressure, it quickly vanishes near the open boundary. In fact, molecules eventually reaching this rarefied region in B are removed. If the relaxation equation requires $\Delta N_B > 0$, new water molecules are placed in B with velocities drawn from a Maxwellian distribution with the mean equal to the velocity at the C cell. The insertion location is determined by the USHER algorithm [10], which efficiently finds new molecule configurations releasing an energy equal to the mean energy per molecule. Momentum exchange due to molecule insertion/removal is taken into account in the overall momentum balance [11].

In fluid dynamics, the mass flux is not an independent quantity but is controlled by the momentum flux [see Eqs. (1) and (2)]. Consequently, we do not explicitly impose the mass flux on the MD system. Instead, it arises naturally from the effect of the external pressure on the molecule dynamics near the interface. The mass flux $\mathbf{J}_H^\rho \cdot \mathbf{e}_\perp$ is thus measured (via simple molecule count) from the amount of MD mass crossing the interface H over the coupling time Δt_c . The opposite of this flux is then transferred to the adjacent C cell via a simple relaxation algorithm [11], using a relaxation time [$\tau_r \geq O(100)$ fs] large enough to preserve the correct mass distribution at the C cell but still much faster than any hydrodynamic time. This guarantees mass conservation.

Results.—We first test the conservation of the total mass M and momentum \mathbf{P} . Results are shown in Fig. 2(a), where we consider the equilibrium state of a hybrid MD simulation of water in a 3D periodic box $50 \times 50 \times 735 \text{ \AA}^3$ (each cell is $50 \times 50 \times 15 \text{ \AA}^3$). The embedded TIP3P water domain (including the buffers) is 75 \AA wide in the coupling (z) direction and was preequilibrated at 1 atm and 300 K. Figure 2(a) shows the mean error in mass and momentum conservation. As stated above, mass conservation is ensured over a short time $\Delta t_c \sim O(100)$ fs, as clearly re-

flected in Fig. 2(a). However, as the external force is imposed within the buffers B , the momentum conservation is ensured only on the “extended” system (MD + FH + B). The variation of momentum of the total system (MD + FH) is then a small bounded quantity whose time average becomes smaller than the thermal noise after about 1 ps [see Fig. 2(a)], i.e., faster than any hydrodynamic time scale.

The FH description uses an accurate interpolated equation of state $p(\rho) = (3.84 - 15.7\rho + 15.3\rho^2)10^4$ bars, which fits for $\rho = [0.54, 0.70]$ (g/mol)/ \AA^3 , the outcome of NPT simulations of TIP3P water at $T = 300$ K, and provides a quasiperfect match of the mean pressure, density [see Fig. 2(b)], and sound velocity. The shear and bulk viscosities of the FH model are assigned to match those of the MD fluid (for water at $T = 300$ K, we used the values reported in Ref. [20]). Also, in cases where the viscosity varies locally, the FH model allows one to assign a different viscosity for each cell. Momentum fluctuations at each cell are consistently controlled by the DPD thermostat in the MD region and via the fluctuation-dissipation balance in the FH domain. Density fluctuations present a much more stringent test of thermodynamic consistency. Each fluid cell is an open subsystem, so, at equilibrium, its mass fluctuation should be governed by the grand-canonical (GC) prescription: $\sigma[\rho] = [\rho k_B T / (V_k c_T^2)]^{1/2}$ [13] [where σ means standard deviation and $c_T^2 \equiv (\partial P / \partial \rho)_T$ is the squared sound velocity at constant temperature]. Mass fluctuations within the MD and FH cells are both in agreement with the GC result [Fig. 2(b)], indicating that neither the USHER molecule insertions [10] nor the mass relaxation algorithm substantially alter the local equilibrium around the interface H .

We now focus on transmission of sound waves which thus far have remained an open problem in the hybrid setting. In a slot of water between rigid walls, we perturb the equilibrium state with a Gaussian density perturbation (amplitude 5% and standard deviation 45 \AA). As shown in Fig. 3(a), the resulting traveling waves cross the MD domain several times at the center of the slot. Sound waves require fast mass and momentum transfer, as any significant imbalance would generate unphysical reflection at the hybrid interface. No trace of reflection is observed, and comparison with full FH simulations shows statistically indistinguishable results.

Finally, we validate the hybrid scheme against full MD simulations of complex fluid flow [setup in Fig. 1(a)]. A sound wave generated by a similar Gaussian perturbation is now reflected against a lipid monolayer (DMPC) [Fig. 3(b)]. Each lipid is tethered by the heavy atoms of the polar head group with an equilibrated grafting cross section of $53 \text{ \AA}^2/\text{lipid}$, close to the experimental cross section of membranes. In the hybrid simulation, the MD water layer close to the lipid membrane extends just 45 \AA above it [see Fig. 1(b)]. By contrast, in the MD simulation we considered a large $180 \times 50 \times 50 \text{ \AA}^3$ box of explicit

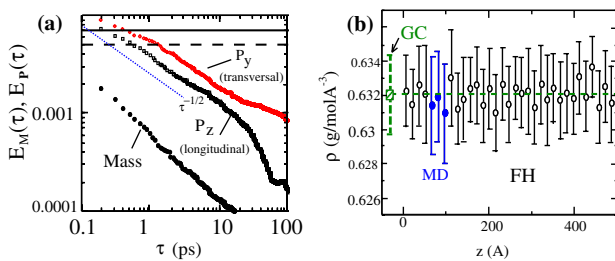


FIG. 2 (color online). (a) The normalized mean error in mass $E_M(\tau)$ and momentum $E_{P_\alpha}(\tau)$ evaluated as $E_A^2(\tau) = \langle [\int_{t_0}^{t_0+\tau} \delta A(t) dt / \tau]^2 \rangle_{t_0} / \langle M_k \rangle^2$, with $\delta A = A - \langle A \rangle$. The dashed and solid horizontal lines are, respectively, the normalized standard deviation of mass and momentum within one cell ($\sigma[M_k] / \langle M_k \rangle$). (b) Density field in a hybrid MD equilibrium simulation of water. The solid circles correspond to MD cells. The error bars are the standard deviation of each cell density. The GC result is $\langle \rho \rangle = 0.632$ (g/mol)/ \AA^3 and $\sigma[\rho] = 0.0045$ (g/mol)/ \AA^3 .

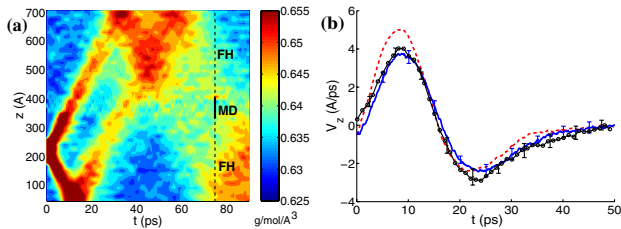


FIG. 3 (color online). (a) Spatiotemporal diagram along z for the density field of a three-dimensional simulation of two sound waves traveling within a closed box filled with water. The region of width 45 \AA around the center of the box is described with MD, while the rest of the domain is solved via FH. (b) The longitudinal velocity arising from the interaction between a sound wave and a grafted lipid layer [setup of Fig. 1(a)]. We compare hybrid MD (solid line), full MD (circles), and full FH simulation using purely reflecting walls (dashed line). Results are averaged over 15 nm from the monolayer; error bars indicate the standard deviation over 10 runs.

water containing around 50 K atoms. The wave velocity near the layer is compared in Fig. 3(b) for the hybrid MD and MD simulations. The excellent agreement demonstrates that the coupling protocol accurately resolves features produced by the molecular structure. In Fig. 3(b), such effects are due to sound absorption by the lipid layer, highlighted by comparison with a FH simulation of the same wave impinging against a purely reflecting wall. The present sound-wave simulations were done assuming an isothermal environment. This is realistic if the rate of thermal relaxation $D_T k^2$ (with $D_T \sim 1.5 \times 10^{-7} \text{ m}^2/\text{s}$ the water thermal diffusivity and $k = 2\pi/\lambda$ the wave number) is comparable with or faster than its sound frequency ck . The present simulations $\lambda \sim 50 \text{ \AA}$ are just in the limit of the isothermal sound regime [21], while waves with $\lambda > O(10) \text{ \AA}$ propagate adiabatically and require consideration of the energy flow [11].

In summary, we have presented a stable and robust multiscale method (hybrid MD) for the simulation of the liquid phase which embeds a small region, fully described by chemically accurate molecular dynamics, into a fluctuating hydrodynamics representation of the surrounding liquid. Mean values and fluctuations across the interface are consistent with hydrodynamics and thermodynamics. Sound waves propagating through the MD domain and flow behavior arising from the interaction with complex molecules are both treated correctly. We considered sound waves reflected by DMPC monolayers, but the scope of this methodology is much broader, including *inter alia* the study of vibrational properties of hydrated proteins (via high frequency perturbations) [4,5], the ultrasound absorption of complex liquids [22], or the simulation of quartz crystal oscillators [23] for the study of complex fluid rheology or slip flow past surfaces [3].

G.D.F. and P.V.C. acknowledge projects Integrative Biology (No. GR/S72023) and IntBioSim (No. BBS/B/16011). R.D.-B. acknowledges Projects No. MERG-CT-2004-006316, No. CTQ2004-05706/BQU, and

No. FIS2004-01934. We thank M. Serrano, A. Dejoan, S. Succi, P. Español, and E. Flekkøy.

*Electronic address: g.defabritiis@ucl.ac.uk

†Electronic address: rafa@ccia.uned.es

‡Electronic address: p.v.coveney@ucl.ac.uk

- [1] G. Csanyi, T. Albaret, M. C. Payne, and A. D. Vita, Phys. Rev. Lett. **93**, 175503 (2004).
- [2] A. Garcia, J. Bell, W. Y. Crutchfield, and B. Alder, J. Comput. Phys. **154**, 134 (1999).
- [3] T. Schmatko, H. Hervet, and L. Leger, Phys. Rev. Lett. **94**, 244501 (2005); C. Neto, D. R. Evans, E. Bonaccorso, H.-J. Butt, and V. S. J. Craig, Rep. Prog. Phys. **68**, 2859 (2005).
- [4] M. Tarek and D. J. Tobias, Phys. Rev. Lett. **89**, 275501 (2002).
- [5] G. Baldini, F. Cannone, and G. Chirico, Science **309**, 1096 (2005).
- [6] P. Vashista, R. K. Kalia, W. Li, A. Nakano, A. Omeltchenko, K. Tsuruta, J. Wang, and I. Ebbsjö, Curr. Opin. Solid State Mater. Sci. **1**, 853 (1996).
- [7] I. Foster, Science **308**, 814 (2005).
- [8] P. V. Coveney, G. De Fabritiis, M. J. Harvey, S. M. Pickles, and A. R. Porter, Comput. Phys. Commun. **175**, 389 (2006).
- [9] P. Koumoutsakos, Annu. Rev. Fluid Mech. **37**, 457 (2005).
- [10] G. De Fabritiis, R. Delgado-Buscalioni, and P. V. Coveney, J. Chem. Phys. **121**, 12 139 (2004); R. Delgado-Buscalioni and P. V. Coveney, J. Chem. Phys. **119**, 978 (2003).
- [11] E. G. Flekkoy, R. Delgado-Buscalioni, and P. V. Coveney, Phys. Rev. E **72**, 026703 (2005); R. Delgado-Buscalioni and P. V. Coveney, Phys. Rev. E **67**, 046704 (2003).
- [12] R. Delgado-Buscalioni, E. Flekkøy, and P. V. Coveney, Europhys. Lett. **69**, 959 (2005).
- [13] L. D. Landau and E. M. Lifshitz, *Fluid Mechanics* (Pergamon, New York, 1959).
- [14] See EPAPS Document No. E-PRLTAO-97-062639 for correlations and discretized equations. For more information on EPAPS, see <http://www.aip.org/pubservs/epaps.html>.
- [15] M. Serrano and P. Español, Phys. Rev. E **64**, 046115 (2001); E. G. Flekkøy, P. V. Coveney, and G. De Fabritiis, Phys. Rev. E **62**, 2140 (2000).
- [16] G. De Fabritiis, M. Serrano, P. Español, and P. V. Coveney, Physica (Amsterdam) **361A**, 429 (2006).
- [17] L. Kalé, R. Skeel, M. Bhandarkar, R. Brunner, A. Gursoy, N. Krawetz, J. Phillips, A. Shinozaki, K. Varadarajan, and K. Schulten, J. Comput. Phys. **151**, 283 (1999).
- [18] T. Soddemann, B. Dunweg, and K. Kremer, Phys. Rev. E **68**, 046702 (2003).
- [19] M. P. Allen and D. J. Tildesley, *Computer Simulations of Liquids* (Oxford University, Oxford, 1987).
- [20] G. Guo and Y. Zhang, Mol. Phys. **99**, 283 (2001).
- [21] M. Cowan, J. Rudnick, and M. Barnatz, Phys. Rev. E **53**, 4490 (1996).
- [22] A. Almagor, S. Yedgar, and B. Gavish, Biorheology **27**, 605 (1990).
- [23] J. Q. Broughton, C. A. Meli, P. Vashista, and R. K. Kalia, Phys. Rev. B **56**, 611 (1997).