

Opening up the Open Spaces through Space Syntax

Reem Zako, Helen Bendon, Jessica Thom and
Julienne Hanson

Sensl/Able Spaces: Space, Art and the Environment
University of Iceland
Reykjavik, 31st May - 2nd June 2006

What this presentation will cover



Jessica Thom

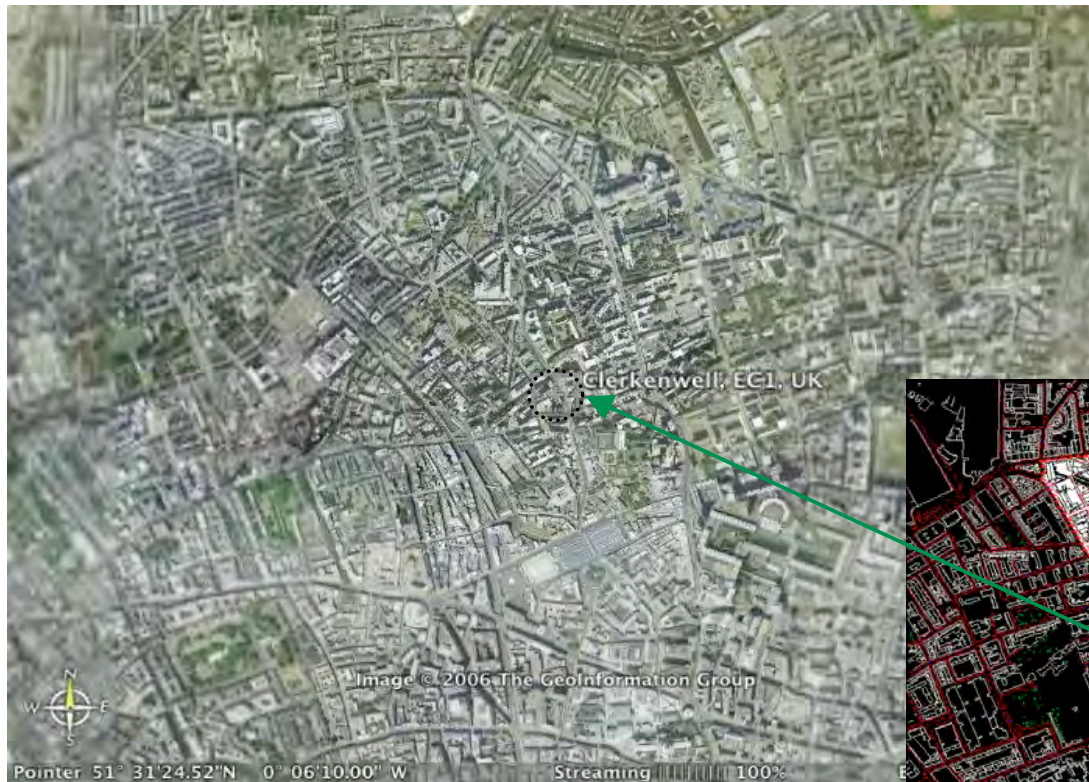
VivaCity's Vision

24 hour city
5 Universities
30+ Academics
100+ industry

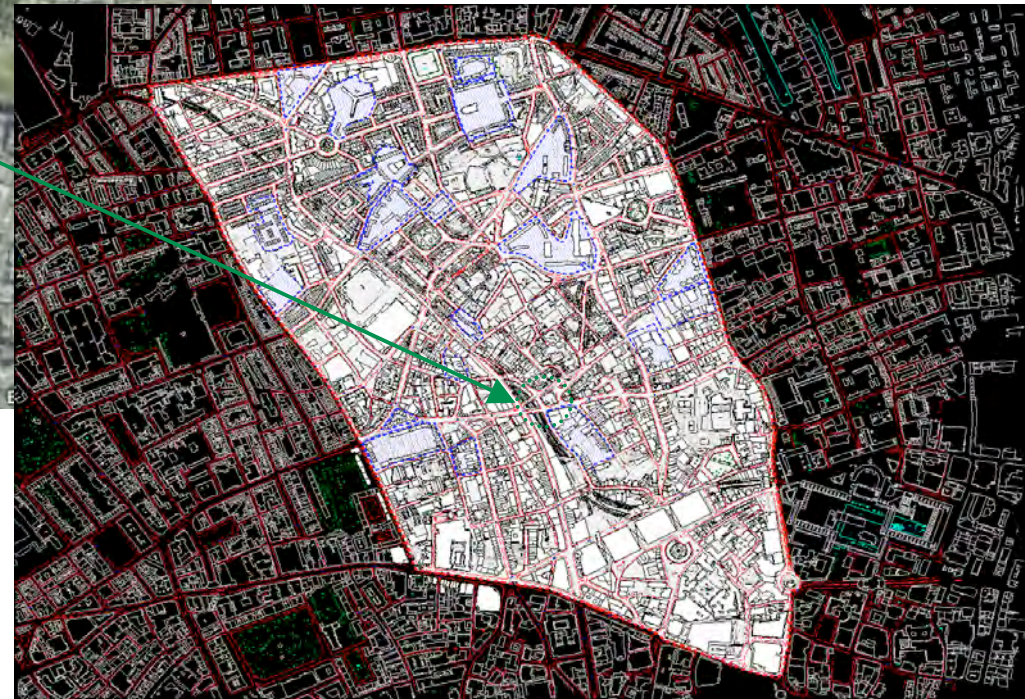
Issues
Crime
Economic Vitality
Urban Environment
Social Inclusion
Quality of Urban Life



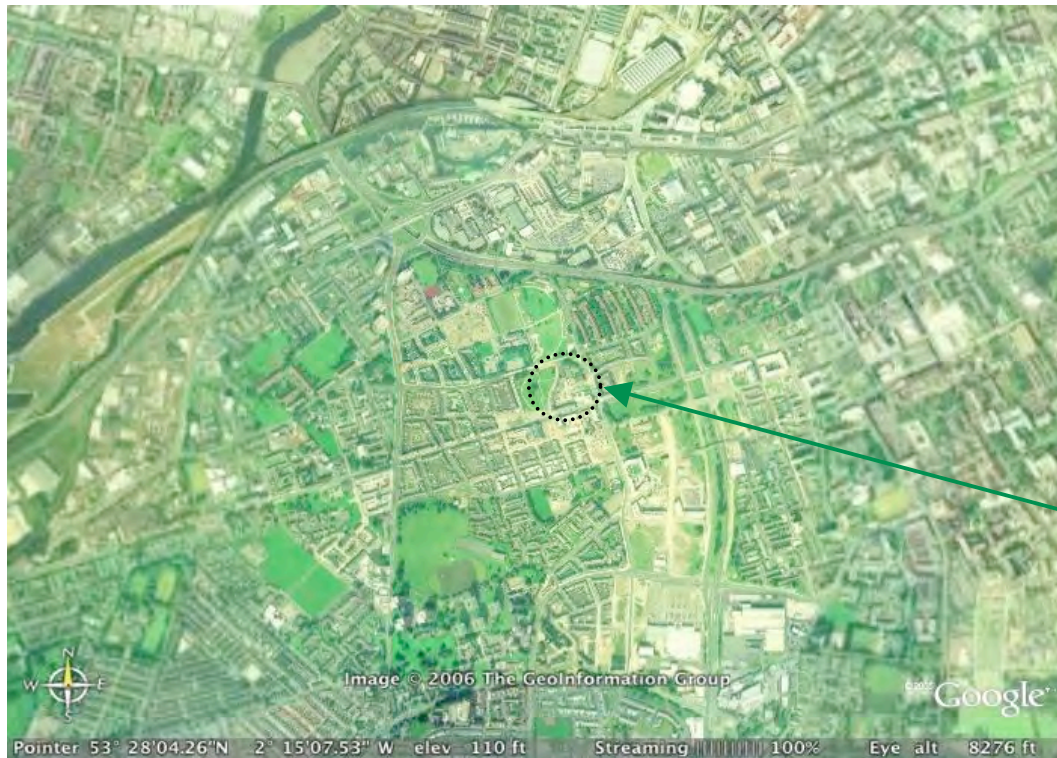
Residential Districts_1



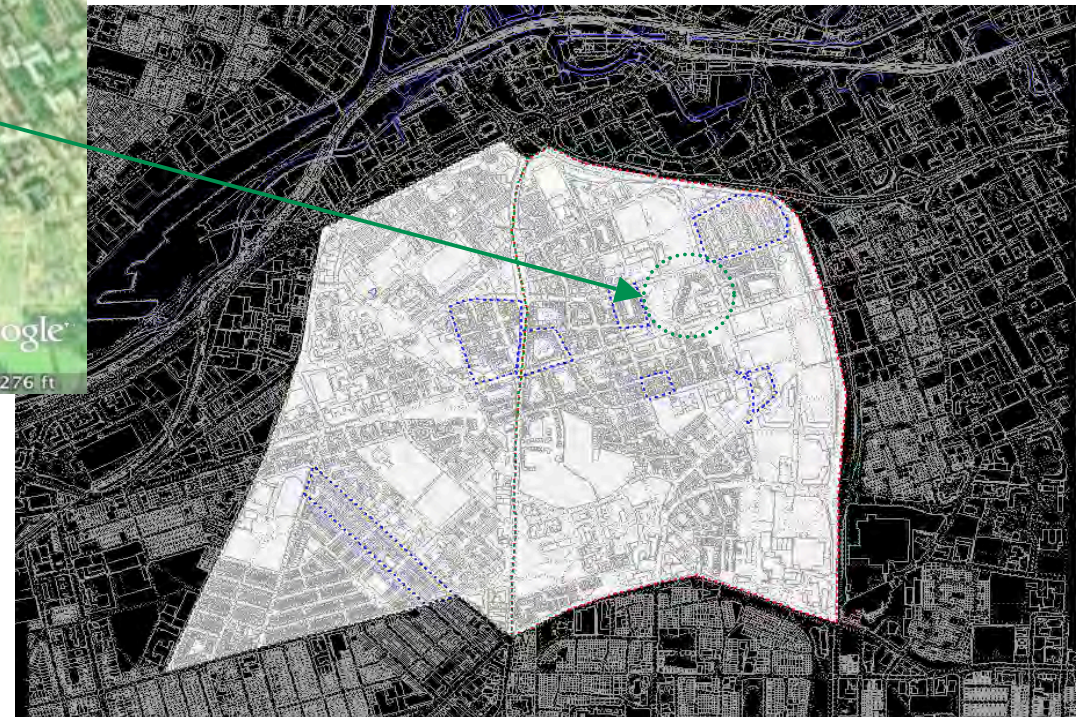
Clerkenwell:
a mixed use 'urban village'
close to the heart of the City,
London's financial centre



Residential Districts_2



Hulme:
 A 19th century, working class industrial suburb close to central of Manchester



Residential Districts_3

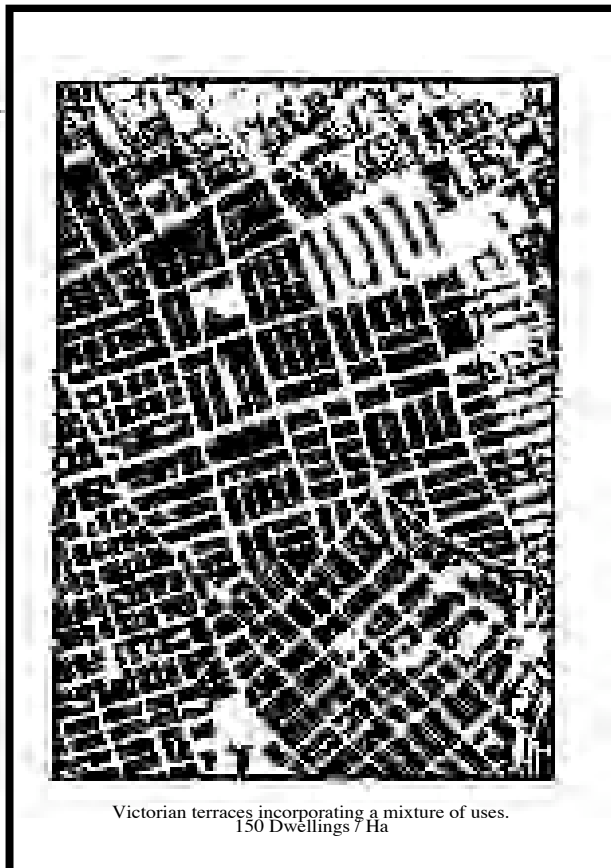
The Devonshire Quarter of Sheffield:

Originally a residential and commercial area during the 19th century, and developed recently as a new 'urban village'.

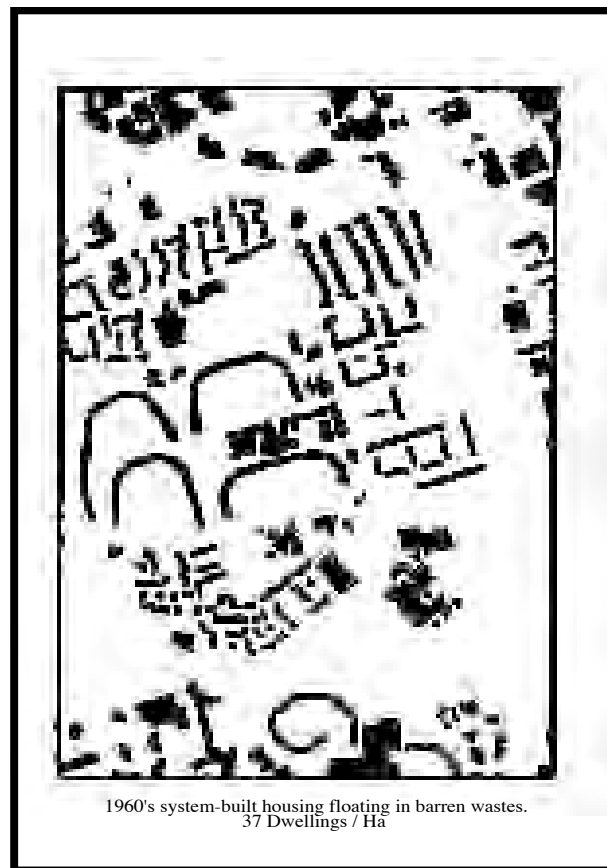


The Urban Block

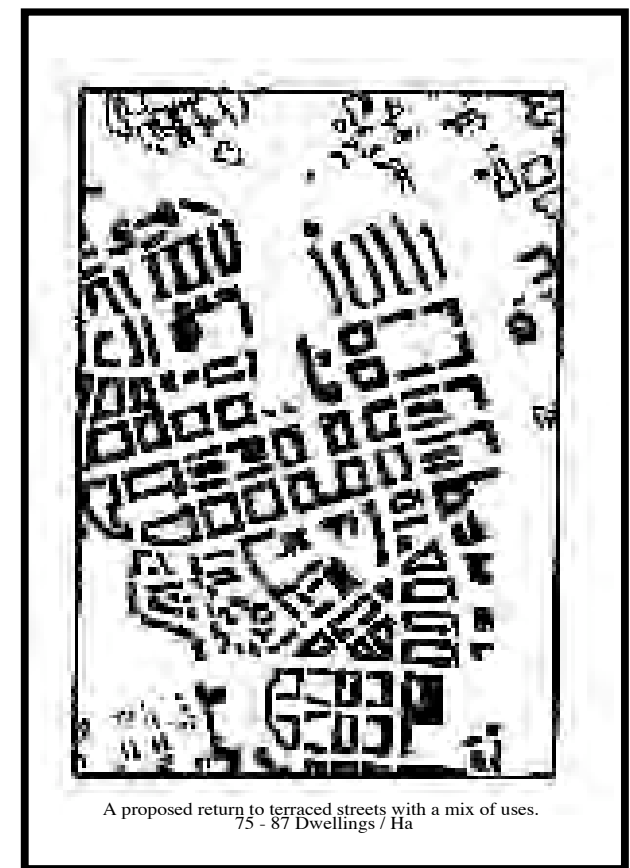
A City carved out of Solid



Buildings as Pavilions



A Denser Urban Fabric



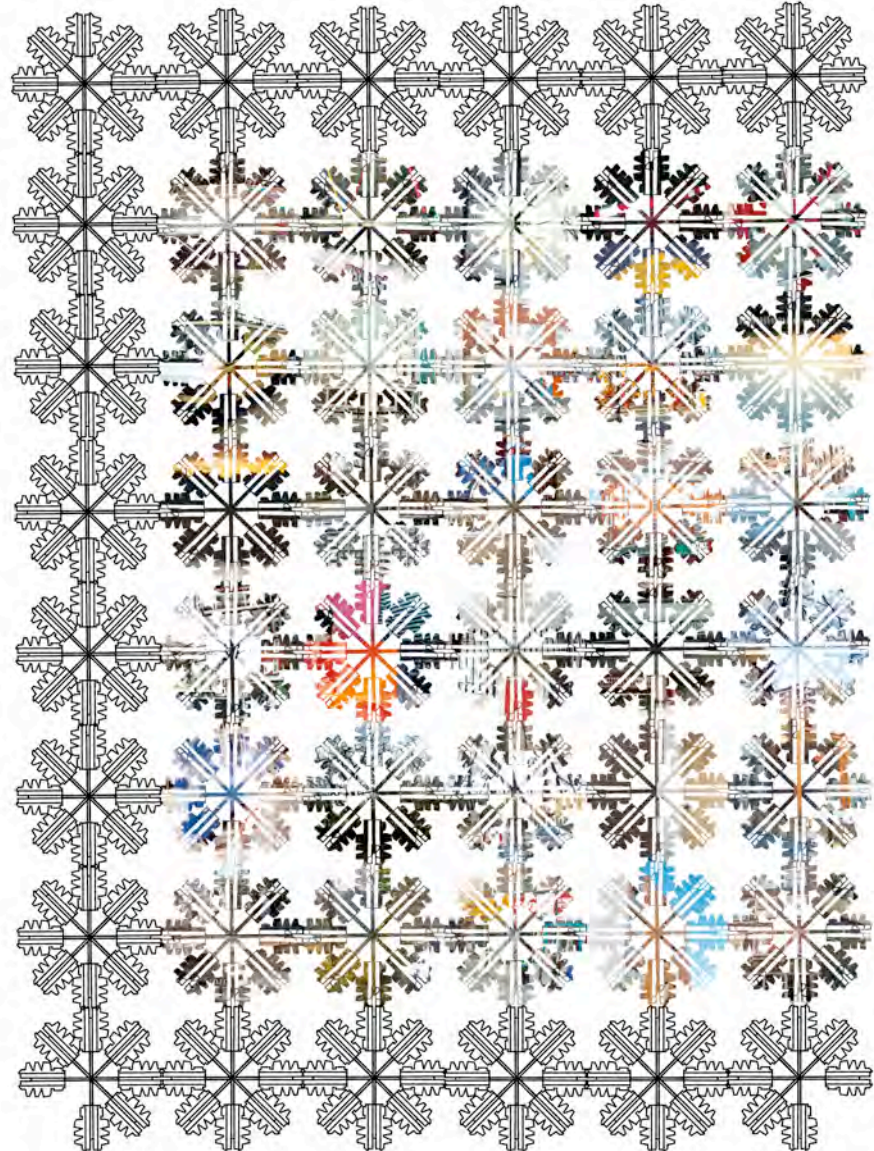
The Public Realm



Ways of Seeing



Experiencing the City



Seeing and Going



Natural Surveillance



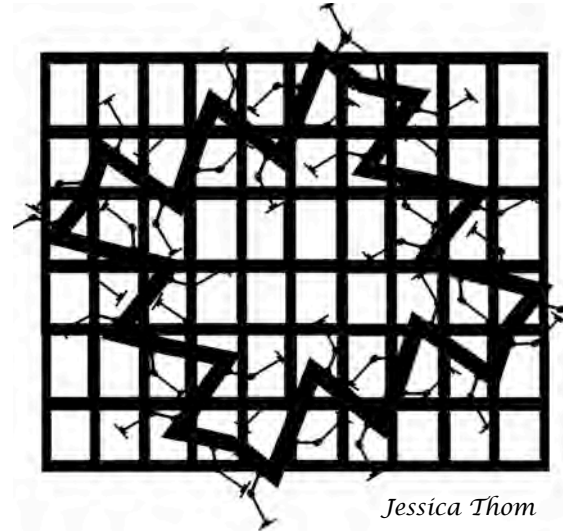
Community by Design



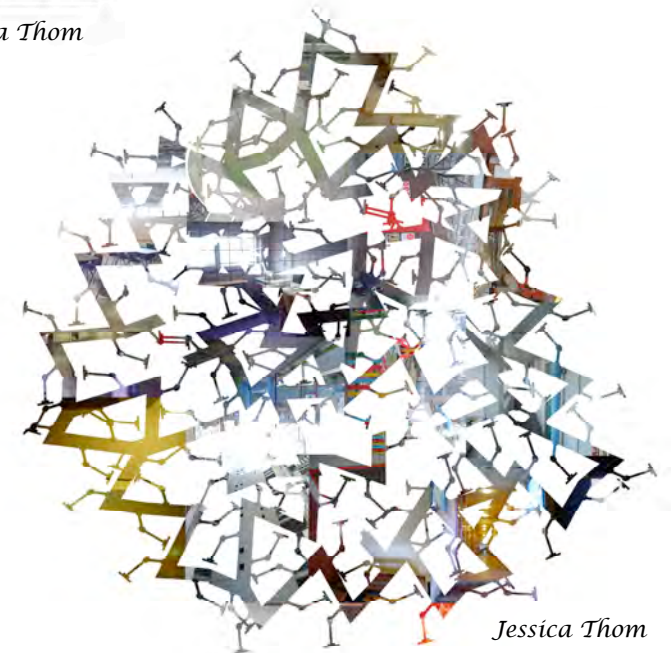
Artistic Expressions of Natural Surveillance



Helen Bendon

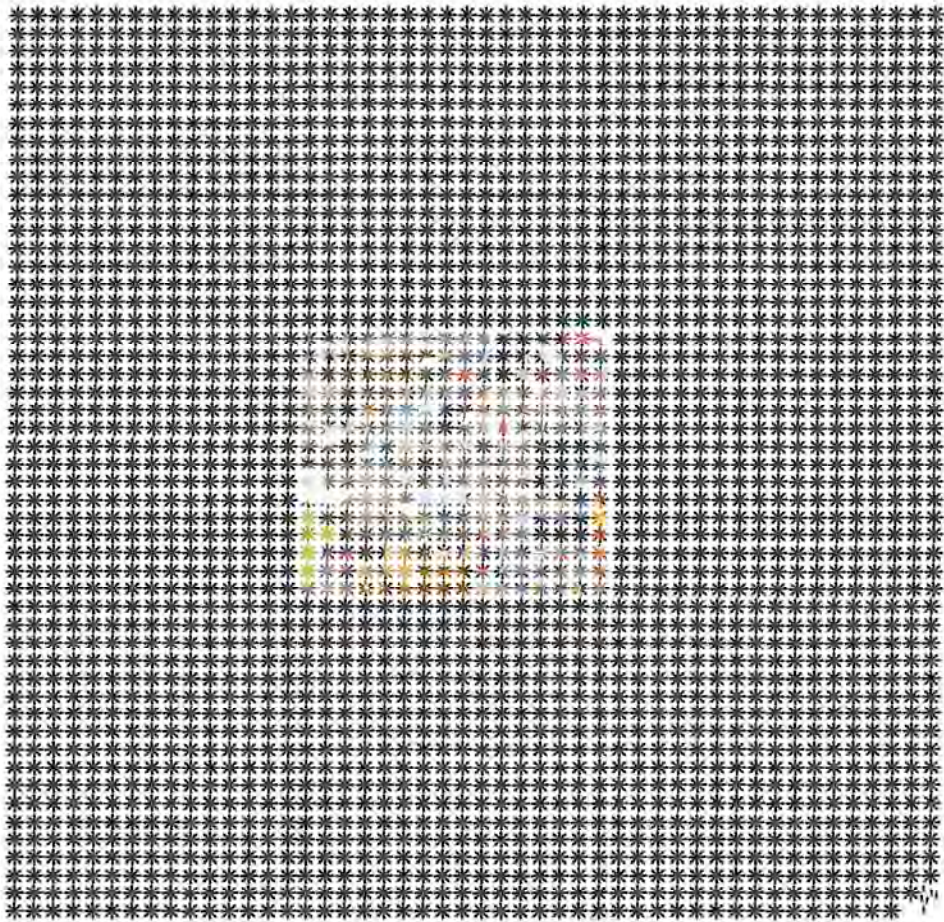


Jessica Thom

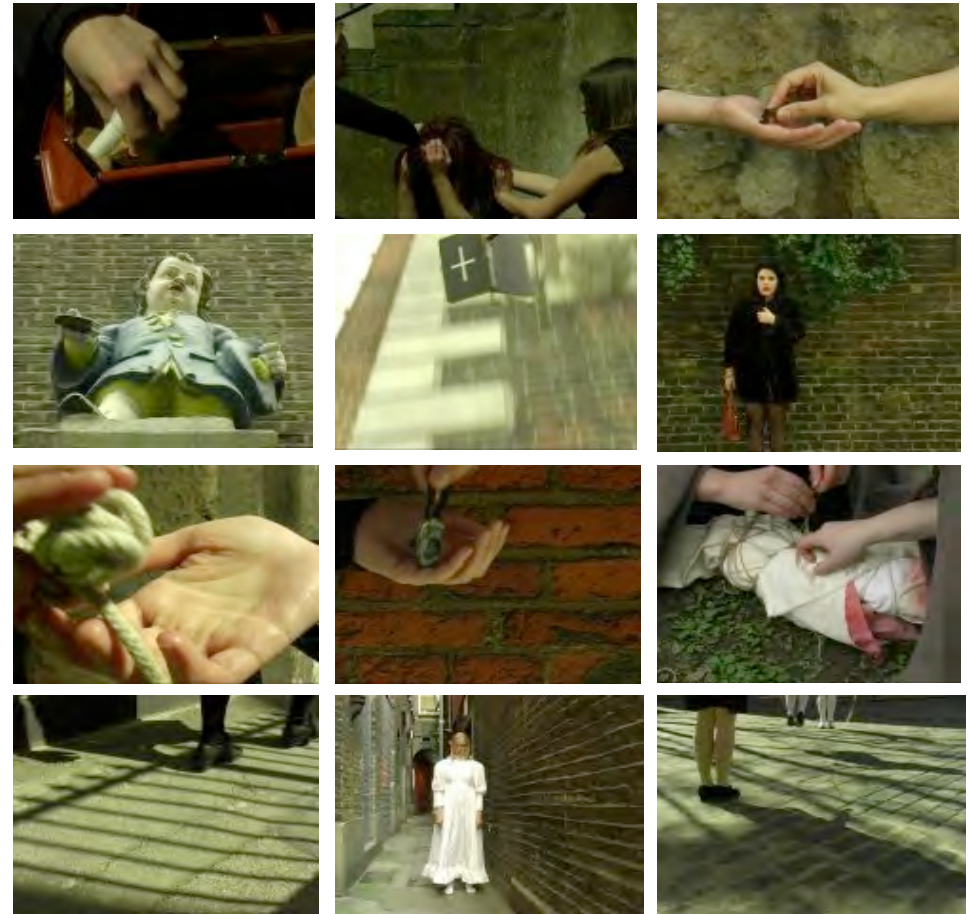


Jessica Thom

Artistic Expressions of Community

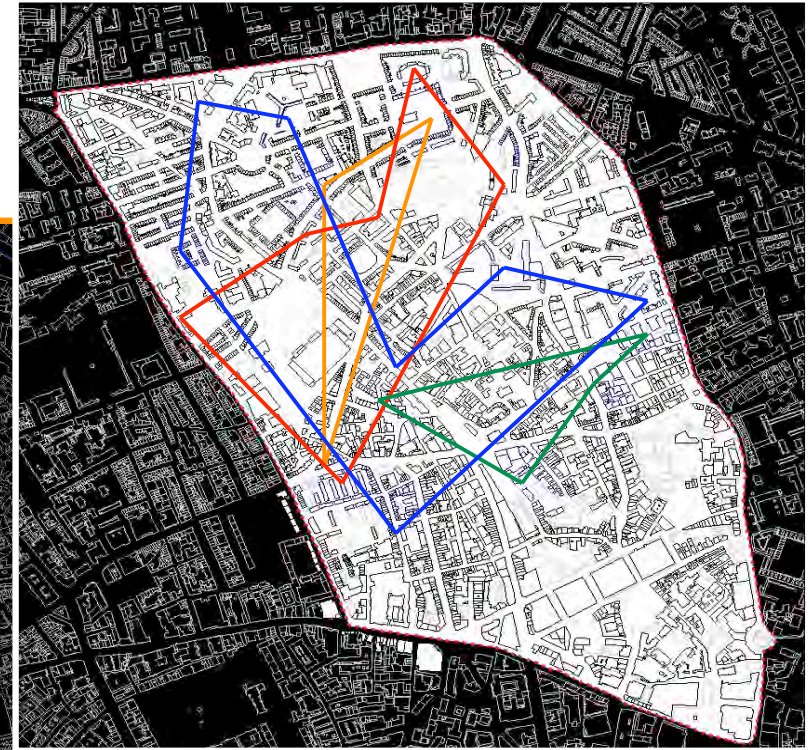
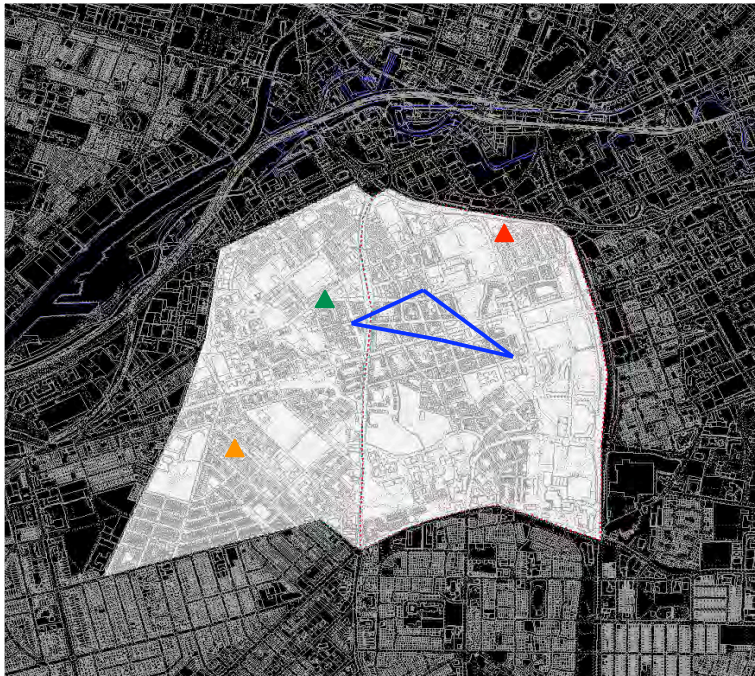


Jessica Thom

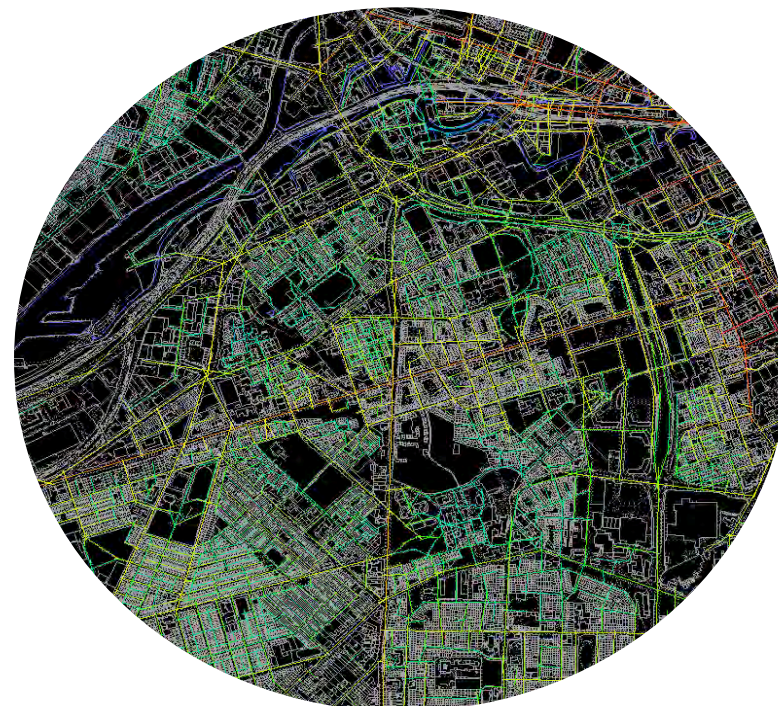


Helen Bendon

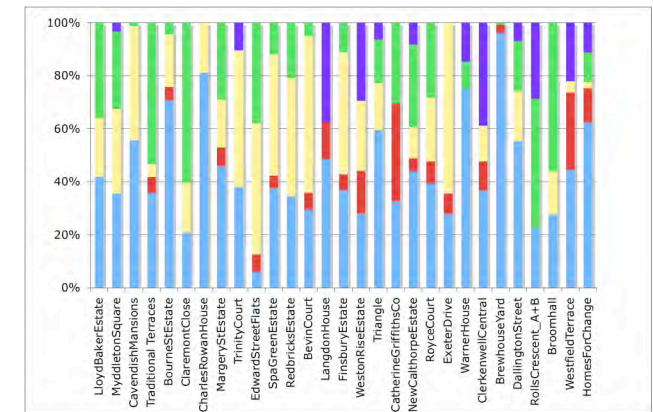
Database of Residential Districts



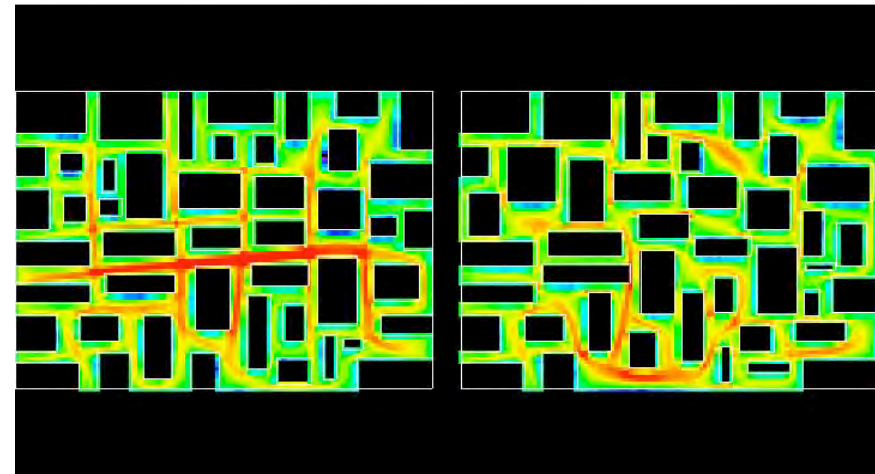
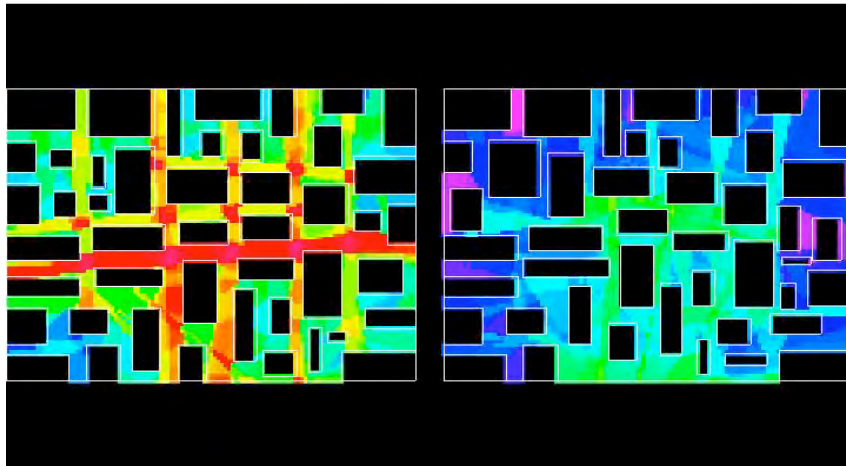
Representing



Open Spaces



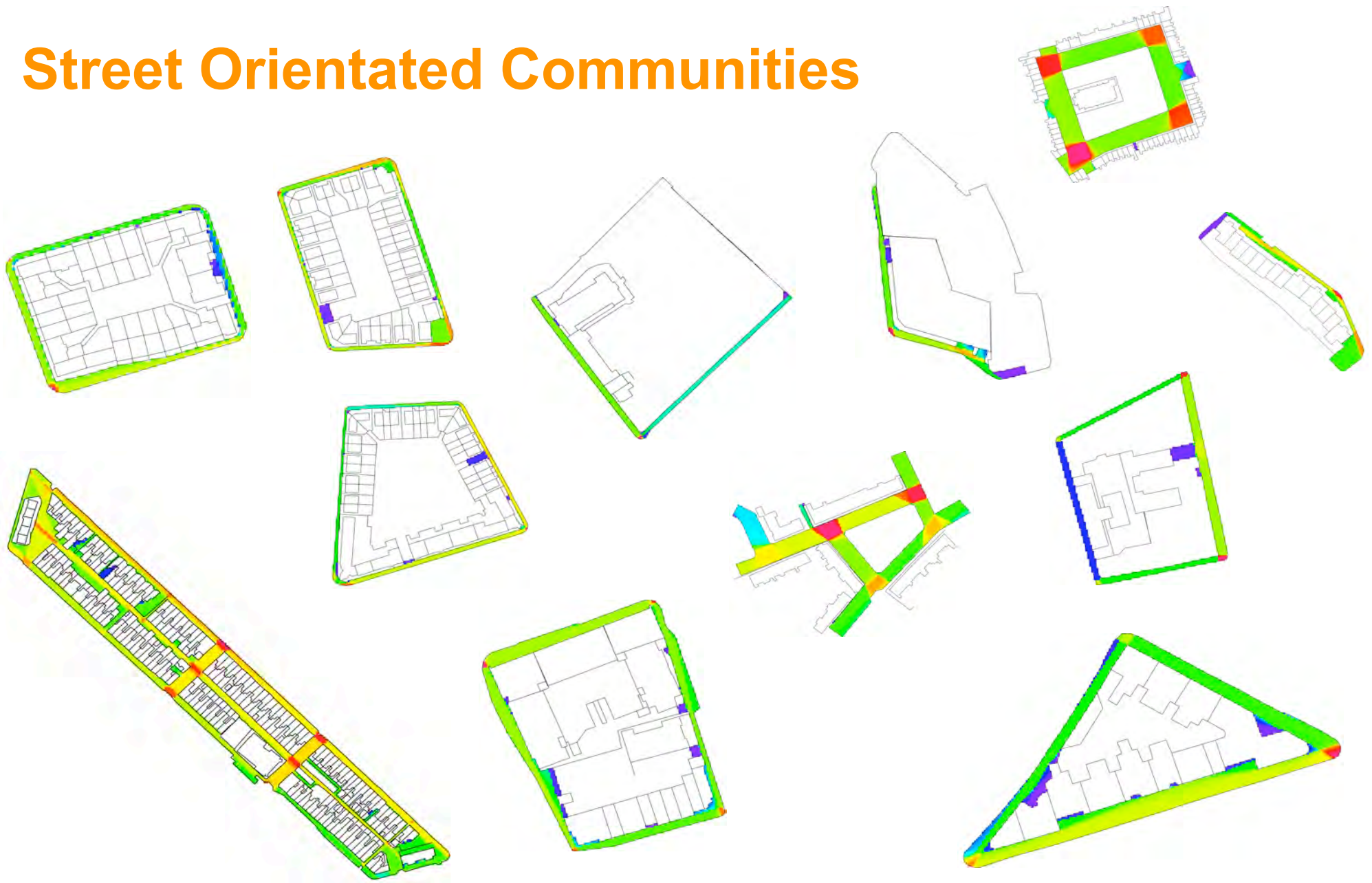
Spatial Integration



Visually Integrated Communities



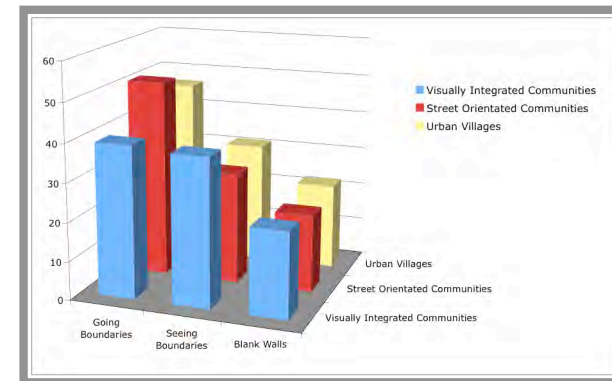
Street Orientated Communities



Urban Villages



Surveillance



Journeying through the public realm

