

1 **Microplastics in the sediments of a UK urban lake**

2

3 *Rebecca Vaughan, Simon D. Turner, Neil L Rose**

4

5 Environmental Change Research Centre, Department of Geography, University College London,
6 Gower Street, London WC1E 6BT, UK

7

8 *author for correspondence

9

10 **Abstract**

11 While studies on microplastics in the marine environment show their wide-distribution, persistence
12 and contamination of biota, the freshwater environment remains comparatively neglected. Where
13 studies on freshwaters have been undertaken these have been on riverine systems or very large
14 lakes. We present data on the distribution of microplastic particles in the sediments of Edgbaston
15 Pool, a shallow eutrophic lake in central Birmingham, UK. These data provide, to our knowledge, the
16 first assessment of microplastic concentrations in the sediments of either a small or an urban lake
17 and the first for any lake in the UK. Maximum concentrations reached 25 – 30 particles per 100g
18 dried sediment (equivalent to low hundreds kg⁻¹) and hence are comparable with reported river
19 sediment studies. Fibres and films were the most common types of microplastic observed. Spatial
20 distributions appear to be due to similar factors to other lake studies (i.e. location of inflow;
21 prevailing wind directions; propensity for biofouling; distribution of macroplastic debris) and add to
22 the growing burden of evidence for microplastic ubiquity in all environments.

23

24 **Keywords:** lake sediments; litter; microplastics; plastics; urban lakes

25

26 **Capsule:** This paper presents the first microplastics data for UK lake sediments and, more broadly,
27 for small and urban lakes, thereby contributing to the growing burden of evidence for microplastic
28 ubiquity.

29

30 **Introduction**

31 In recent years there has been increasing concern over the scale and impacts of plastic debris in the
32 world's oceans. Since the 1950s an estimated 1 billion tonnes of plastic have been discarded and of
33 the 280 million tonnes of plastics now produced annually (Rochman and Browne, 2013), more than
34 10% ends up in the marine environment (Cole et al., 2011), either by being intentionally or
35 unintentionally discarded or being wind-blown from terrestrial sources. Such debris can cause
36 entanglement in a number of species from cetaceans to crustaceans as well as suffocation and
37 problems via ingestion (blockage of digestive tracts; internal wounding; satiation) in many aquatic
38 fauna (Codina-García et al., 2013; Derraik, 2002; Gregory, 2009), transport of species via colonisation
39 (Zettler et al., 2013) and pollutant transfer (Teuten et al., 2007). Plastic debris is likely to persist for
40 hundreds of years (Bergmann and Klages, 2012; O'Brine and Thompson, 2010) and even longer in
41 polar or deep-sea environments (Woodall et al., 2014). With predicted estimates of an additional 33
42 billion tonnes of plastic production by 2050 (Rochman and Browne, 2013) and 99% of all seabird
43 species to have ingested plastic by the same date (Wilcox et al., 2015), environmental impacts are
44 likely to continue for many decades.

45
46 Much of the attention on large plastic debris in the marine environment has focussed on their
47 concentration in oceanic gyres (Moore et al., 2001) but recently, it has been suggested that
48 observed levels of plastics in marine ecosystems are not able to account for expected inputs, i.e. that
49 some plastic has been 'lost'. This may be explained by photo-, physical or biological degradation into
50 smaller secondary plastic particles, or 'microplastics' which pass through the nets used for sampling
51 larger plastic debris (Cózar et al., 2014; Thompson et al., 2004). While definitions for microplastics
52 vary they are typically considered to be less than 5 mm in one dimension (Eerkes-Medrano et al.,
53 2015; Horton et al., 2017). Primary microplastics (i.e. those generated to be this size) include plastic
54 resin pellets, the raw material used for manufacturing, unintentionally released during
55 manufacturing and transport and carried by surface run-off and rivers to the ocean, or to the ocean
56 directly (Holmes et al., 2011; Mato et al., 2001). However, primary microplastics are also used as
57 abrasives in personal care products (Gregory, 1996) or from shedding during the laundry of synthetic
58 textiles (Napper and Thompson, 2016) and may pass unchanged through standard waste water
59 treatment facilities (Engler, 2012).

60
61 Environmental impacts of microplastics, again principally observed in marine studies, include direct
62 and indirect ingestion (filter feeders and feeders of organic particles in mud are especially at risk)
63 (Teuten et al., 2009); transfer of pollutants through food chains (including plastic additives as well as

64 contaminants adsorbed onto surfaces such as trace metals (Holmes et al 2011), PAHs, PCBs,
65 organochlorine pesticides (Mato et al 2001; Cole et al 2011) and brominated flame retardants
66 (Engler, 2012; Zarfl and Matthies, 2010); and species transfer via colonization of plastics as a novel
67 habitat (Zettler et al 2013).

68

69 However, while a considerable amount of recent work is now available for microplastics in the
70 marine environment, there have been relatively few studies on freshwaters although early
71 indications are that their presence is likely to be as equally pervasive (Eerkes-Medrano et al 2015).
72 All lake studies have so far focused on very large waterbodies, with a number of studies focused on
73 the Laurentian Great Lakes where the locations of urban and industrial centres have accounted for
74 microplastic distributions in shoreline sediments (Corcoran et al., 2015; Driedger et al., 2015; Faure
75 et al., 2015; Zbyszewski and Corcoran, 2011) and in surface waters (Eriksen et al., 2013). Similar
76 distributions have also been observed in surface waters of other large lakes, which are more
77 removed from urban settings, such as Lake Hovsgol, Mongolia (Free et al., 2014) and Lake Garda,
78 Italy where microplastic distributions in shore-line sediments were related to wind-induced surface
79 circulation patterns and fishing activities (Imhof et al., 2013). In rivers, microplastics in sediments
80 from the Rhine-Main system in Germany (Klein et al., 2015) and the St Lawrence River in Canada
81 (Castañeda et al., 2014) were also related to urban locations. Lechner et al (2014) demonstrated the
82 scale of contamination in major rivers by estimating that more than 1500 tonnes of microplastics
83 enter the Black Sea each year via the River Danube alone. Sanchez et al (2014) reported the
84 presence of microplastics in the digestive tracts of the gudgeon (*Gobio gobio*), a sedentary cyprinid,
85 in a number of French rivers. In the United Kingdom, studies on plastics in freshwaters have, to date,
86 been only restricted to rivers. Morritt et al. (2014) compared the scale of submerged versus floating
87 macroplastic debris in the River Thames showing sewage treatment works to be major sources while
88 Horton et al. (2017a) indicated sewage as well as road and land run-off as sources of microplastics in
89 River Thames sediments.

90

91 These studies indicate the importance of urban centres as sources of both macro- and microplastic
92 contamination to freshwaters, a situation which is only likely to be exacerbated as urban areas and
93 populations continue to expand over coming decades. Therefore, it may be expected that urban
94 lakes would receive higher levels of microplastics from both inflowing streams draining residential,
95 commercial and industrial areas, as well as via degradation of wind-blown macroplastic debris and
96 possibly atmospheric deposition (Dris et al., 2016). However, no published data exist for
97 microplastics in urban lakes. Here, we present data demonstrating the abundance and distribution

98 of both macroplastic debris and microplastics in the surface sediments of an urban lake in central
99 Birmingham, UK. To our knowledge this is the first microplastic study for a UK lake and, more
100 broadly, the first such study for either a small or an urban lake.

101

102

103 **Methods**

104 *Sample site*

105 Edgbaston Pool (52.4552°N; 01.9212° W) is located 3 km from the centre of Birmingham. It is 127 m
106 above sea level, has a surface area of 7.2 ha and a maximum depth of 2.5 m found towards the
107 southern end near the dam wall (Figure 1a). The lake was formed by the damming of Chad Brook, a
108 small stream which enters from the north. This provided power for water mills, forming an Upper
109 (the current pool) and a Lower Edgbaston Pool which is now infilled and overgrown. The mill is
110 known to have existed by 1557 when it was used as a fulling mill. In the 17th century the mill was
111 being used for blade-making which continued to the mid-19th century when it became used for gold
112 and silver rolling (Turner et al 2013). From 1875 the mill was no longer used and the pool is shown as
113 a 'fish pond' on early-20th century maps. While once surrounded by industry, the lake is now
114 bordered by the Winterborne Botanic Gardens to the west and Edgbaston Golf Course to the east.
115 The lake and surrounding area was given SSSI (site of special scientific interest) status in 1986 for the
116 diverse woodland and wetland habitats around its margins. The main outflow is in the south-east
117 corner of the lake. An additional outflow exists in the south-west corner but usually remains dry. The
118 catchment area is shown in Supplementary Information (Figure S1).

119

120 *Sampling methods*

121 A sediment sampling transect was established at four locations around the perimeter of Edgbaston
122 Pool. Transects were perpendicular to the shoreline and established by fixing a rope on land close to
123 the water edge and attaching this to a buoyed anchor line off-shore. Given the shallow shelving
124 nature of the lake bathymetry (Figure 1), samples were taken at each 0.5m depth to 1.5m (labelled
125 A-D; e.g. T1A, T1B etc.). At the northern end of the lake the shallow water depths precluded
126 establishing a transect with any significant depth difference within 50m of the lake shore (Figure 1),
127 so Transect 3 was treated as a surface sample only (T3A). However, because of the shallow nature of
128 this part of the lake, extra surface sediment samples were taken to provide greater spatial coverage.
129 In addition to these transects 11 surface sediment samples were collected at approximately 150m
130 intervals around the lake perimeter except for the northern end where samples were more closely

131 located. Surface sediment samples were taken as close as possible to the shore where clear
132 sediment accumulation was visible.

133

134 At each sampling point, a sediment sample was collected from the boat using an HTH gravity corer
135 (Renberg and Hansson, 2008) fitted with a sample tube with an internal diameter of 7.8 cm. The top
136 10cm of each core was collected from each location. Radiometric chronologies for recent sediment
137 cores from Edgbaston Pool indicate sediment accumulations of between 0.8 – 1.6 cm yr⁻¹ (Turner et
138 al., 2013; Yang et al., 2016) such that each surface sample approximately represented the most
139 recent 10 years of accumulation. Also, at each sampling location, a visual assessment of macroplastic
140 debris on the lake bottom was undertaken using a bathyscope from the boat. Finally, all litter was
141 collected from 5 m either side of the start of each transect in order to determine the proportion that
142 plastic contributes to overall debris in each location. These items were stored separately.

143

144 *Microplastic extraction from lake sediments*

145 There is no established standard method for the extraction of microplastics from either marine or
146 freshwater sediments (Horton et al 2017b) although in recent reviews of marine studies (Hidalgo-
147 Ruz et al., 2012; van Cauwenberghe et al., 2015) consensus seems to be moving towards a
148 combination of size- and density separation. Sieving may result in size distribution artefacts,
149 especially with such different particle morphologies as fibres and fragments, but given the nature of
150 the collected sedimentary material it was important to remove as much larger material as possible.
151 100g of each sediment sample was sieved, first through a 1mm and then a 500µm sieve. There is no
152 universal size-classification of microplastics but these ranges have been used regularly in previous
153 studies (e.g. Hidalgo-Ruz et al., 2012; van Cauwenberghe et al 2015). Each sieve's contents were
154 washed several times with water to ensure no smaller particles remained. All material passing through
155 the sieves was stored in case it was required at a later date. No removal of organic material by
156 chemical means was attempted. Both >1 mm and 500 µm – 1 mm size fractions were then density
157 separated using water allowing the separation of polystyrene, polyethylene and polypropylene
158 (Hidalgo-Ruz et al., 2012; Zhang et al., 2015). This was undertaken twice. All floating material and
159 particulates from the sieves suspected as being plastic were transferred to glass microscope slides
160 for identification.

161

162 *Plastic identification*

163 Microplastic particles were identified under the binocular microscope (x40) using physical
164 properties (e.g. texture, flexibility) as well as colour and structure (Song et al., 2015). No organic or

165 cellular structure should be visible while fibres should be equally thick along their entire length and
166 should, similarly, retain the same colour all the way along (Hidalgo-Ruz et al., 2012). Microplastics
167 were then categorised into size, type, shape, colour, pliability, and degradation stage (Song et al.,
168 2015). Visual inspection by low-powered microscopy has been considered a recommended
169 identification approach by some plastic-debris programs (e.g. US National Oceanic and Atmospheric
170 Administration (NOAA); Masura et al., 2015). While Fourier-transform infrared (FT-IR) (Hidalgo-Ruz
171 et al., 2012; Song et al 2015) and Raman spectroscopy (Horton et al 2017a) are becoming more
172 widely used in the identification of microplastics extracted from marine and freshwater sediments
173 (despite their drawbacks (Horton et al., 2017b)), such facilities were not available to this study. While
174 we acknowledge that this may lead to the mis-identification of some natural particulate matter and
175 synthetic polymers (Thompson et al 2004) especially among smaller particulates (Eriksen et al 2013),
176 the use of microscopy to identify microplastics has been reported as resulting in abundances that are
177 not significantly different from spectroscopic methods (Song et al., 2015).

178 *Contamination avoidance*

179 There is high likelihood of post-sampling contamination of fibres in samples due to their ubiquity
180 (Woodall et al., 2015) and they generally form a large percentage of microplastics recovered from
181 environmental samples. Clothing made from synthetic fibres was avoided and clothing was covered
182 with cotton laboratory coats throughout sample handling. All samples and the laboratory area used
183 for handling samples were also covered as much as possible to avoid contamination. A single person
184 handled all samples using latex gloved hands. Non-plastic equipment was used as much as possible.
185 Any plastic equipment was viewed under the microscope for its optical properties and, following
186 Woodall et al. (2015), was recorded. Procedural blanks were used to check for background
187 contamination from laboratory sources via the air, clothes, sampling tools and vessels etc. These blanks
188 ran for 2, 4 and 8 weeks over the full course of the laboratory work. Despite the controls in place, a
189 single fibre was observed in the first and third blanks respectively.

190

191 *Macroplastics*

192 For each collected item various characteristics were noted: whether they were muddied, biofouled,
193 bleached or weathered, along with a note of biota or other debris attached to their surface. The original
194 and current colour was noted as well as the original source where possible.

195

196 **Results**

197 *Macroplastic distribution*

198 A clear distribution pattern of macroplastic debris can be seen from Figure 2. Highest levels of debris
199 occurred at sampling locations at the southern end of the lake. In the south-west, 20 debris items
200 were collected at T1A while 11 and 10 items respectively were collected at the adjacent sites S1 and
201 S11. In the south-east, at S2 near the main outflow, 13 debris items were collected. By contrast, all
202 other sampling locations recorded much less. S3 and S5 on the eastern side and T3A in the north-
203 west had 5 or 6 items; S7, S9 and T4A in the north and west had 2 or 3, while all other sites (located
204 in the northern half of the lake) had no macroplastic debris at the sampling locations although debris
205 was clearly visible amongst the fringing reeds at S10 on the western side.

206

207 Similarly, a greater variety of plastic debris items was recorded in the south and south-west (Figure
208 2). Plastic bottle caps, cosmetics tubes, syringes, clothing and Styrofoam were only recorded in the
209 south and south-west locations while the main debris items in the rest of the lake were plastic
210 shopping bags. Food-wrappers and plastic films were more common being found in the south and
211 south-west as well as north-west locations.

212

213 The most heavily bio-fouled debris were submerged plastic shopping bags collected in the northern
214 and eastern locations. It may be that the large surface areas of these items and the shallow, open
215 nature of the lake margins at these locations made conditions more favorable to bio-fouling. By
216 contrast, sites S1, T1A and S2 in the south showed the least amount of bio-fouling and lowest levels
217 of degradation. This suggests that these items may have been transported rapidly to this area. In this
218 part of the lake, bio-fouling may be reduced as it is permanently shaded by an over-hanging tree
219 canopy. Alternatively, as this was the area of greatest quantity and variety of debris items, this could
220 indicate an alternative or additional source of litter to the rest of the lake. A footpath runs adjacent
221 to the southern end of the waterbody and so any litter discarded here could remain in these areas.
222 However, this footpath is only accessed from the Botanical Gardens and so this direct littering is
223 considered unlikely to be a major additional source.

224

225 *Microplastic distribution*

226 Plastic films and fibres were the most common microplastics found in the surface sediments and
227 Figure 3(a, b respectively) shows their distribution around Edgbaston Pool. All data are presented as
228 numbers of microplastic particles per 100g dried sediment. As with macroplastic debris, microplastic
229 films showed elevated concentrations in the southern parts of the lake with respect to the north,
230 with lowest concentrations at S7 and S8 closest to the northern Chad Brook inflow, at T3A in the
231 north-west and at S4 in the east. However, in contrast to the macroplastic distribution, microplastic

232 films also showed elevated concentrations down the eastern side of the lake with highest
233 concentrations at S2 and S3, the two southern-most locations on that side. These along with T1A in
234 the south-west showed the highest microplastic film concentrations in the lake.

235

236 Microplastic fibres were also high at T1A in the south-west but low elsewhere in the south with
237 elevated concentrations down the eastern side from S7 to S3. Lowest concentrations of fibres were
238 observed in the south-east near the outflow (2) and down the western side of the lake.

239

240 *Transects*

241 The highest concentration of total microplastics were found in T1A (26 per 100g dried sediment;
242 equivalent to 260 kg⁻¹) at a level comparable to that found in many river sediments (see Horton et
243 al., 2017b for a review). In Transects 2 and 4, only microplastic fibres and films were found. In
244 transect 1 a greater diversity was found in the shallowest, near-shore sample (i.e. 'foam' and
245 'fragment' microplastics) and only fibres were found at greater distance from the shore and at
246 greater depths. This was the steepest transect (Figure 1a) and the greater microplastic diversity
247 near-shore may reflect the greater prevalence of macroplastic debris degrading *in situ* at this
248 location. No macroplastic debris were observed on Transect 1 away from the shore. The
249 concentration of both microplastic fibres and total microplastic particles decreased away from the
250 shore although concentrations at 100 cm and 150 cm depth were the same (Figure 4). Transect 4
251 also shows a maximum microplastic concentration nearest to shore for both total microplastic and
252 for each of the particle types (fibres and films) while concentrations are the same at the two deeper
253 locations further from shore. By contrast, Transect 2 midway along the eastern side of the lake
254 shows no pattern with depth or distance from shore for total microplastic or fibre concentrations,
255 although microplastic film concentrations show a decline with depth (Figure 4). Overall, there is a
256 greater negative correlation between depth and microplastic films ($r^2 = -0.45$) than for fibres ($r^2 = -$
257 0.17), although neither are significant.

258

259

260 **Discussion**

261 *Sources of microplastics*

262 The distribution of the macro- and microplastics around, and within, Edgbaston Pool can provide
263 some indication as to their provenance. Primary microplastics include 'raw' plastic resin pellets,
264 abrasives in personal care products and fibres produced during the laundry of synthetic textiles
265 which pass through waste water treatment facilities (Napper and Thompson 2016). Of these

266 particle-types, only fibres were found in the sediments of Edgbaston Pool and they are also the most
267 common type of microplastic particle observed in marine (e.g. Woodall et al 2015) and river
268 sediments (Horton et al 2017a).

269

270 Elevated concentrations of fibres were found predominantly down the eastern side of the lake and
271 as there are no sources around the lake itself, this suggests possible inputs via the inflow of Chad
272 Brook in the north-east with prevailing wind directions helping prevent any spreading across the lake
273 to the west (Figure 1c). If microplastics in the inflow behaved like other suspended particulate
274 matter, then it may be expected that highest concentrations would occur nearest to where the
275 stream enters the lake due to the reduction in water velocity and the subsequent deposition of
276 particulate load from the stream-waters. This is not observed as highest concentrations occur mid-
277 way down the eastern side between the inflow and outflow streams. Hence, it maybe that due to
278 their lower density, with respect to other sedimentary material, microplastics remain suspended for
279 longer and are deposited beyond the immediate shallow inflow area in the main part of the lake, or
280 only later once they have been bio-fouled sufficiently to sink. There are no sewage treatment works
281 in the catchment of Chad Brook so it is unlikely that sewage outfall is a major source of these
282 particles. However, the stream does run through residential areas, allotments and school grounds
283 (Figure S1) and so the use of sewage-based fertilisers cannot be entirely ruled out (Browne et al.,
284 2011). Very little information exists for the distributions of microplastics in terrestrial systems
285 (Horton et al 2017b), let alone the transfer of these particles from terrestrial to aquatic sites and
286 other sources typical of densely populated urban areas may be more likely. For example,
287 construction materials, artificial turf and household dust may all be sources (Dris et al 2017; Horton
288 et al 2017b) as well as atmospheric deposition (Dris et al. 2016) and run-off from roads (vehicle-
289 derived plastics; road paints; deposition to the road surface; degradation of road-side debris) via
290 storm drains.

291

292 Microplastic films, by contrast, are more likely to be secondary microplastics produced by the
293 degradation of larger, flexible plastic packaging, defined by the World Economic Forum as bags,
294 films, foils, pallet shrouds, pouches, blister packs, and envelopes (WEF, 2016). Degradation of this
295 type of plastic occurs via mechanical disintegration, from photodegradation with UV penetration,
296 oxidation of the plastic structure, and hydrolytic weathering (Law et al., 2010). As a consequence it
297 may be expected that greater concentrations and diversity of microplastic films and fragments occur
298 where macroplastic debris diversity and prevalence is also highest, and this is observed in Edgbaston
299 Pool sediments.

300

301 Small lake systems are less dynamic than marine environments where much of the microplastic
302 studies have been undertaken to date. Especially in small, sheltered and urban lakes such as
303 Edgbaston Pool there are no strong currents and very limited wave action to cause physical
304 breakdown of macroplastic debris (Eerkes–Medrano et al. 2015). Therefore, photolytic- and bio-
305 degradation are likely to be the main processes of macroplastic breakdown although rapid biofouling
306 may hinder UV penetration to the plastic surface (O’Brine and Thompson, 2010). Water depths in
307 Edgbaston Pool are shallow and so relatively warm, and light penetrates to the lake bed across much
308 of the lake area (Turner et al 2013). Biofouling does not occur at a constant rate for all microplastics,
309 but is dependent upon the size of a particle (Bagaeva and Chubarenko, 2016; Wright et al., 2013).
310 Fibres with an estimated diameter of 30-100 microns have the largest surface area for a given mass
311 of all microplastics, (Bagaeva and Chubarenko, 2016) and are therefore more likely to biofoul and sink
312 which may explain the distribution of fibres down the eastern side of the lake. This may also explain
313 the apparent lack of other types of microplastics found in the sediment samples. As spherical debris
314 such as pellets and microbeads have a lower surface area to volume ratio, they are likely to remain
315 buoyant for longer, and so may be transported out of Edgbaston Pool via surface currents before they
316 lose their buoyancy (Fazey and Ryan, 2016).

317

318 These biofouling dynamics similarly apply to macroplastic debris but are also dependent upon the
319 characteristics of the polymer, including surface energy, texture and solidity (Wright et al., 2013).
320 Wright et al. (2013) found that polyethylene food bags took only a week to establish a complete
321 surface biofilm in the marine environment, which by the third week had grown sufficiently to reduce
322 density and cause the plastics to sink below the sea surface. In lakes, biofouling rates are likely to
323 vary depending on nutrient availability, water turbulence and temperature while the presence of,
324 especially organic, particles to act as substrates for micro-organism growth is also considered
325 important (Melo and Bott, 1997). Therefore, Edgbaston Pool is likely to have comparatively high
326 biofouling rates due to its status as a shallow, eutrophic lake susceptible to algal blooms in the summer
327 months (Turner et al., 2013) and this may explain both the spatial variation in the types of
328 macroplastics and the extent of biofouling around Edgbaston Pool. Plastic bags were predominantly
329 found at the northern end of the lake (and not further south than S3) while biofouling was also
330 greatest in the north (Figure 1d). Hence, plastic bags deposited in the north of the lake, either wind-blown
331 from elsewhere or via Chad Brook will enter shallow and warm waters with greater exposure to light.
332 Here, they would become quickly biofouled and sink. It is unlikely that submerged, heavily bio-fouled
333 plastics would move across the lake with currents below the water surface as occurs in river systems

334 (Morritt et al 2014) due to the extensive plant growth across the lake bed (Turner et al 2013) and
335 hence they are likely to remain in this area and eventually degrade *in situ* to microplastic films which
336 may then be transported by water currents to other parts of the lake and/or become incorporated
337 into the sediment record. Given the nature of the Edgbaston Pool catchment, macroplastics could also
338 become trapped in Chad Brook and biofouled in the stream prior to being transported to the northern
339 end of the lake during periods of high flow. This could also explain the distribution of heavily biofouled
340 materials at that end of the lake.

341

342 Macroplastic debris in southern parts of the lake were largely exposed above the waterline (Figure 1d)
343 and exhibited low levels of bio-fouling. Exposure to the air and greater levels of light may lead to
344 rapid corrosion of the polymer mix (Cole et al 2011) and *in situ* fragmentation by photodegradation.
345 This would explain the larger diversity of both macro- and microplastic in this part of the lake. This
346 debris may either be recent, being dropped by visitors from the nearby footpath, or possibly washed
347 in via Chad Brook and rapidly transported across the lake without sinking. Although the cyclical
348 sinking and re-floating of debris has been recorded in the ocean after de-fouling by foraging
349 organisms (Andrady, 2011; Wright et al., 2013) it is unlikely that debris would be cleaned to such an
350 extent as observed here (Figure 1d). While wind-blown sources cannot be ruled out for lighter
351 packaging materials and plastic bags, it is not likely for other items such as plastic bottles, syringes
352 and rope found in this southern part of the lake (see Figure 2b).

353

354 In summary, macroplastic debris may be dropped at the southern end of Edgbaston Pool by visitors
355 using the footpath, or transported via Chad Brook in the north, while lighter items could be wind-
356 blown from surrounding areas. The source of microplastic fibres is unknown but is most likely to be
357 from sources surrounding Chad Brook while other microplastics are likely to be secondary particles
358 resulting from the degradation of larger debris within the lake either by biodegradation or by
359 corrosion following prolonged exposure to air and light in southern areas. Atmospheric deposition as
360 a source of microplastics in urban areas (Dris et al 2016) cannot be ruled out but we have no data for
361 this from this site.

362

363 *Microplastic distribution*

364 Eerkes-Medrano et al. (2015) provide a review of microplastics in freshwaters and summarise the
365 factors influencing microplastic distributions from the available literature, although, as mentioned
366 above, the number of studies are relatively few and include only very large lakes. Briefly, the factors
367 suggested are: human population density distribution (e.g. Eriksen et al. 2013; Zbyszewski and

368 Corcoran, 2011); water residence time; size of water body; waste management and amount of
369 sewerage overflow; wind-driven surface currents (e.g. Zbyszewski and Corcoran 2011; Imhof et al.
370 2013); waves leading to resuspension; the density, shape and size of particles themselves; degree of
371 fouling.

372

373 While some of the factors identified from these large lake studies likely transfer to all standing water
374 bodies (e.g. degree of biofouling; particle characteristics), some are not relevant for small lakes such
375 as Edgbaston Pool. For example, while urban lakes are likely to receive higher levels of macro- and
376 microplastic contamination than rural sites, the population density will be the same for the whole
377 lake. Similarly, the reduced fetch of small lakes will result in reduced wave-action which is further
378 mitigated in lakes like Edgbaston Pool by the surrounding emergent macrophyte beds. Hence, from
379 our study we suggest the factors influencing the distribution of microplastics within the sediments of
380 small lakes includes:

- 381 i) **Lake characteristics:** including presence of inflow streams (providing connectivity to
382 catchment sources upstream); trophic status (rapidity of biofouling and linked to sediment
383 accumulation rate (see below); water column transparency (allowing algal growth on
384 submerged materials as well as UV penetration for photodegradation); shoreline
385 characteristics (bathymetry and shoreline macrophyte growth which allow the trapping of
386 macroplastic debris in shallow areas and increase the energy required to resuspend
387 sedimentary material from within beds).
- 388 ii) **Sediment accumulation:** distribution of accumulating sediments is strongly linked to lake
389 bathymetry and basin morphology (Hilton et al., 1986) but will control the likelihood of
390 resuspension and transport of deposited material including microplastics; sediment
391 accumulation rate (controls the speed of burial of deposited material and is more rapid in
392 eutrophic lakes (Rose et al., 2011)
- 393 iii) **Sources of macroplastic debris:** proximity to wind-blown sources (tips; dumps etc); lake
394 location in urban or rural settings; proximity to public access and rights-of-way.
- 395 iv) **Prevailing winds and inflows** creating water movement and preferential distribution as well
396 as sources for atmospheric deposition of microplastics directly (Dris et al 2016).
- 397 v) **Microplastic properties:** for example, surface area and texture (controlling the prevalence
398 for biofouling); density (controlling sinking and resurfacing following de-fouling and
399 movement on the surface and within the water column).

400

401 Interestingly, and further to the factors outlined by Eerkes-Medrano et al. (2015), Free et al (2014)
402 demonstrate a decreasing concentration of microplastics with distance from the shore in open-water
403 trawls in Lake Hovsgol, Mongolia and hence agree with our transect data although at a significantly
404 larger scale. Similarly, they also suggested that prevailing winds and surface circulation affected
405 microplastic distributions especially near the outflow where microplastic particles were
406 concentrated. They found an absence of cosmetic microbeads and thought this to be due to the lack
407 of waste water treatment facilities around the lake and highlighted the importance of UV
408 penetration through the water column for photodegradation of submerged debris. Corcoran et al
409 (2015) suggest that proximity to inflows, the plume of inflow sediments and basin morphology effect
410 microplastic distribution in Lake Ontario and indicate a role for basin morphology with respect to
411 sediment accumulation zones. This latter factor was also highlighted by van Cauwenberghe et al
412 (2015) for marine sediments where the relationship between microplastic abundance and organic
413 content (percentage of total organic carbon- %TOC) and the sediment fine fraction (<63µm) support
414 the hypothesis that microplastics accumulate in sedimentary depositional areas. While these
415 distributions seem sensible given the sources of microplastics at these sites and at Edgbaston Pool,
416 further research is required to determine whether these distributions exist more broadly in lake
417 systems. Furthermore, the factors controlling distributions of plastics in lakes are likely to change
418 throughout the degradation process and it may be that, until final burial, it is worth perceiving
419 microplastics as having a relatively fluid relationship with the habitat around them in which their
420 properties, and the factors influencing their movement, are subject to change.

421

422

423 **Conclusions**

424 These data from Edgbaston Pool represent the first sediment microplastic concentrations for either
425 a small or an urban lake. Concentrations are relatively low compared to the limited number of other
426 freshwater sediment studies but spatial distributions appear to be due to similar factors determined
427 in large waterbodies e.g. site-specific lake characteristics; distribution and rate of sediment
428 accumulation; sources of macroplastic debris; prevailing wind directions; relationship with inflow
429 streams and the properties of the microplastic particles themselves. In comparison with marine
430 studies, the extraction of microplastics is likely to be more problematic for lake sediments due to the
431 increased prevalence of organic matter and the greater discolouration of the microplastics, possibly
432 resulting in an underestimate of particle concentrations. However, these data, along with the
433 growing number of other examples from other freshwater systems appear to suggest that
434 microplastic contamination is an ubiquitous problem, although further work is required to

435 determine its scale and extent. The need to address the impacts of macro- and microplastic debris is
436 therefore not only a marine problem and there is a need to consider how inland waters and
437 terrestrial systems (Horton et al 2017b) may also be protected. River discharge is well-known as a
438 source of plastics to the sea (Lechner et al., 2014; Sadri and Thompson, 2014) but increasing
439 evidence suggests that this, along with wind-blown debris and deliberate and accidental dumping of
440 litter, is also a significant route for lakes. As with a number of other pollutants affecting freshwaters
441 these are likely to be exacerbated in urban areas.

442

443

444 **Acknowledgements**

445 We thank Lee Hale at Winterbourne Botanic Garden and Peter Fawcus at Edgbaston Golf Club for
446 allowing access to Edgbaston Pool and for permission to work on the site and David Thornalley for
447 comments and suggestions. This research did not receive any specific grant from funding agencies in
448 the public, commercial, or not-for-profit sectors.

449

450

451 **References**

452

- 453 Andrady, A.L., 2011. Microplastics in the marine environment. *Mar. Pollut. Bull.* 62, 1596-1605.
- 454 Bagaeva, M., Chubarenko, I., 2016. On biofouling of microplastic particles of different shapes – some
455 mathematics. *Geophys. Res. Abs.* 18.
- 456 Bergmann, M., Klages, M., 2012. Increase of litter at the Arctic deep-sea observatory HAUSGARTEN.
457 *Mar. Pollut. Bull.* 64, 2734-2741.
- 458 Browne, M.A., Crump, P., Niven, S.J., Teuten, E., Tonkin, A., Galloway, T., Thompson, R., 2011.
459 Accumulation of microplastic on shorelines worldwide: Sources and sinks. *Environ. Sci.*
460 *Technol.* 45, 9175-9179.
- 461 Castañeda, R.A., Avlijas, S., Simard, M.A., Ricciardi, A., 2014. Microplastic pollution in St. Lawrence
462 River sediments. *Can. J. Fish. Aq. Sci.* 71, 1-5.
- 463 Codina-García, M., Milito, T., Moreno, J., González-Solís, J., 2013. Plastic debris in Mediterranean
464 seabirds. *Mar. Pollut. Bull.* 77, 220-226.
- 465 Cole, M., Lindeque, P., Halsband, C., Galloway, T.S., 2011. Microplastics as contaminants in the
466 marine environment: A review. *Mar. Pollut. Bull.* 62, 2588-2597.

467 Corcoran, P.L., Norris, T., Ceccanese, T., Walzak, M.J., Helm, P.A., Marvin, C.H., 2015. Hidden plastics
468 of Lake Ontario, Canada and their potential preservation in the sediment record. *Environ.*
469 *Pollut.* 204, 17-25.

470 Cózar, A., Echevarría, F., González-Gordillo, J.I., Irgoien, X., Obedá, B., Hernández-León, S., Palma, T.,
471 Navarro, S., García-de-Lomas, J., Ruiz, A., Fernández-de-Purllés, M.L., Duarte, C.M., 2014.
472 Plastic debris in the open ocean. *Proc. Nat. Acad. Sci.* 111, 10239-10244.

473 Derraik, J.G.B., 2002. The pollution of the marine environment by plastic debris: a review. *Mar.*
474 *Pollut. Bull.* 44, 842-852.

475 Driedger, A.G.J., Dürr, H.H., Mitchell, K., Van Cappellen, P., 2015. Plastic debris in the Laurentian
476 Great Lakes: A review. *J. Great Lakes Res.* 41, 9-19.

477 Dris, R., Gasperi, J., Saad, M., Mirande, C., Tassin, B., 2016. Synthetic fibres in atmospheric fallout: A
478 source of microplastics in the environment? *Mar. Pollut. Bull.* 194, 290-293

479 Dris, R., Gasperi, J., Mirande, C., Mandin, C., Guerrouache, M., Langlois, V., Tassin, B., 2017. A first
480 overview of textile fibers, including microplastics, in indoor and outdoor environments.
481 *Environ. Pollut.* 221, 453-458

482 Eerkes-Medrano, D., Thompson, R.C., Aldridge, D.C., 2015. Microplastics in freshwater systems: A
483 review of the emerging threats, identification of knowledge gaps and prioritisation of
484 research needs. *Wat. Res.* 75, 63-82.

485 Engler, R.E., 2012. The complex interaction between marine debris and toxic chemicals in the ocean.
486 *Environ. Sci. Technol.* 46, 12302-12315.

487 Eriksen, M., Mason, S., Wilson, S., Box, C., Zellers, A., Edwards, W., Farley, H., Amato, S., 2013.
488 Microplastic pollution in the surface waters of the Laurentian Great Lakes. *Mar. Pollut. Bull.*
489 77, 177-182.

490 Faure, F., Demars, C., Wieser, O., Kunz, M., de Alencastro, L.F., 2015. Plastic pollution in Swiss
491 surface waters: nature and concentrations, interaction with pollutants. *Environ. Chem.* 12,
492 582-591

493 Fazey, F.M.C., Ryan, P.G., 2016. Biofouling on buoyant marine plastics: An experimental study into
494 the effect of size on surface longevity. *Environ. Pollut.* 210, 354-360.

495 Free, C.M., Jensen, O.P., Mason, S.A., Eriksen, M., Williamson, N.J., Boldgiv, B., 2014. High-levels of
496 microplastic pollution in a large, remote, mountain lake. *Mar. Pollut. Bull.* 85, 156-163.

497 Gregory, M.R., 1996. Plastic 'scrubbers' in hand cleansers: a further (and minor) source for marine
498 pollution identified. *Mar. Pollut. Bull.* 32, 867-871.

499 Gregory, M.R., 2009. Environmental implications of plastic debris in marine settings - entanglement,
500 ingestion, smothering, hangers-on, hitch-hiking and alien invasions. *Phil. Trans. Roy. Soc.*
501 *Lond. B.* 364, 2013-2025.

502 Hidalgo-Ruz, V., Gutow, L., Thompson, R.C., Thiel, M., 2012. Microplastics in the marine
503 environment: A review of methods used for identification and quantification. *Environ. Sci.*
504 *Technol.* 46, 3060-3075.

505 Hilton, J., Lishman, J.P., Allen, P.V., 1986. The dominant processes of sediment distribution and
506 focusing in a small eutrophic monomictic lake. *Limnol. Oceanogr.* 31, 125-133.

507 Holmes, L.A., Turner, A., Thompson, R.C., 2011. Adsorption of trace metals to plastic resin pellets in
508 the marine environment. *Environ. Pollut.* 160, 42-48.

509 Horton, A.A., Svendsen, C., Williams, R.J., Spurgeon, D.J., Lahive, E., 2017a. Large microplastic
510 particles in sediments of tributaries of the River Thames, UK - Abundance, sources and
511 methods for effective quantification. *Mar. Pollut. Bull.* 114, 218-226.

512 Horton, A.A., Walton, A., Spurgeon, D.J., Lahive, E., Svendsen, C., 2017b. Microplastics in freshwater
513 and terrestrial environments: Evaluating the current understanding to identify the
514 knowledge gaps and future research priorities. *Sci. Tot. Env.*
515 <http://dx.doi.org/10.1016/j.scitotenv.2017.01.190>

516 Imhof, H.K., Ivleva, N.P., Schmid, J., Niessner, R., Laforsch, C., 2013. Contamination of beach
517 sediments of a subalpine lake with microplastic particles. *Curr. Biol.* 23, R867-R868.

518 Klein, S., Worch, E., Knepper, T.P., 2015. Occurrence and spatial distribution of microplastics in river
519 shore sediments of the Rhine-Main area in Germany. *Environ. Sci. Technol.* 49, 6070-6076.

520 Law, K.L., Morét-Ferguson, S., Maximenko, N.A., Proskurowski, G., Peacock, E.E., Hafner, J., Reddy,
521 C.M., 2010. Plastic accumulation in the North Atlantic subtropical gyre. *Science* 329, 1185-
522 1188.

523 Lechner, A., Keckeis, H., Lumesberger-Loisl, F., Zens, B., Krusch, R., Tritthart, M., Glas, M.,
524 Schludermann, E., 2014. The Danube so colourful: A potpourri of plastic litter outnumbers
525 fish larvae in Europe's second largest river. *Environ. Pollut.* 188, 177-181.

526 Masura, J., Baker, J., Foster, G., Arthur, C., Herring, C., 2015. Laboratory methods for the analysis of
527 microplastics in the marine environment: Recommendations for quantifying synthetic
528 particles in waters and sediments. NOAA Technical Memorandum NOS-OR&R-48. Silver
529 Spring, MD. 31pp.

530 Mato, Y., Isobe, T., Takada, H., Kanehiro, H., Ohtake, C., Kaminuma, T., 2001. Plastic resin pellets as a
531 transport medium for toxic chemicals in the marine environment. *Environ. Sci. Technol.* 35,
532 318-324.

533 Melo, L.F., Bott, T.R., 1997. Biofouling in water systems. *Experiment. Therm. Fluid Sci.* 14, 375-381.

534 Moore, C.J., Moore, S.L., Leecaster, M.K., Weisberg, S.B., 2001. A Comparison of plastic and plankton
535 in the North Pacific Central Gyre. *Mar. Pollut. Bull.* 42, 1297-1300.

536 Morritt, D., Stefanoudis, P.V., Pearce, D., Crimmen, O.A., Clark, P.F., 2014. Plastic in the Thames: A
537 river runs through it. *Mar. Pollut. Bull.* 78, 196-200.

538 Napper, I.E., Thompson, R.C., 2016. Release of synthetic microplastic plastic fibres from domestic
539 washing machines: Effects of fabric type and washing conditions. *Mar. Pollut. Bull.* 112, 39-
540 45.

541 O'Brine, T., Thompson, R.C., 2010. Degradation of plastic carrier bags in the marine environment.
542 *Mar. Pollut. Bull.* 60, 2279-2283.

543 Renberg, I., Hansson, H., 2008. The HTH sediment corer. *J. Paleolimnol.* 40, 655-659.

544 Rochman, C.M., Browne, M.A., 2013. Classify plastic waste as hazardous. *Nature* 494, 169-171.

545 Rose, N.L., Morley, D., Appleby, P.G., Battarbee, R.W., Alliksaar, T., Guilizzoni, P., Jeppesen, E.,
546 Korhola, A., Punning, J.M., 2011. Sediment accumulation rates in European lakes since
547 AD1850: trends, reference conditions and exceedence. *J. Paleolimnol.* 45, 447-468.

548 Sadri, S.S., Thompson, R.C., 2014. On the quantity and composition of floating plastic debris entering
549 and leaving the Tamar Estuary, southwest England. *Mar. Pollut. Bull.* 81, 55-60.

550 Sanchez, W., Bender, C., Porcher, J.-M., 2014. Wild gudgeons (*Gobio gobio*) from French rivers are
551 contaminated by microplastics: Preliminary study and first evidence. *Environ. Res.* 128, 98-
552 100.

553 Song, Y.K., Hong, S.H., Jang, M., Han, G.M., Rani, M., Lee, J., Shim, W.J., 2015. A comparison of
554 microscopic and spectroscopic identification methods for analysis of microplastics in
555 environmental samples. *Mar. Pollut. Bull.* 93, 202-209.

556 Teuten, E.L., Rowland, S.J., Galloway, T.S., Thompson, R.C., 2007. Potential for plastics to transport
557 hydrophobic contaminants. *Environ. Sci. Technol.* 41, 7759-7764.

558 Teuten, E.L., Saquing, J.M., Knappe, D.R.U., Barlaz, M.A., Jonsson, S., Björn, A., Rowland, S.J.,
559 Thompson, R.C., Galloway, T.S., Yamashita, R., Ochi, D., Watanuki, Y., Moore, C., Viet, P.H.,
560 Tana, T.S., Prudente, M., Boonyatumanond, R., Zakaria, M.P., Akkavong, K., Ogata, Y., Hirai,
561 H., Iwasa, S., Mizukawa, K., Hagino, Y., Imamura, A., Saha, M., Takada, H., 2009. Transport
562 and release of chemicals from plastics to the environment and to wildlife. *Phil. Trans. Roy.
563 Soc. Lond. B.* 364, doi: 10.1098/rstb.2008.0284.

564 Thompson, R.C., Olsen, Y., Mitchell, R.P., Davis, A., Rowland, S.J., John, A.W.G., McGonigle, D.,
565 Russell, A.E., 2004. Lost at sea: Where is all the plastic? *Science* 304, 838.

566 Turner, S.D., Rose, N.L., Goldsmith, B., Harrad, S., Davidson, T.A., 2013. The OPAL Water Centre
567 Monitoring Report 2008-2012. OPAL, London, pp. 1-204.

568 van Cauwenberghe, L., Devriese, L., Galgani, F., Robbens, J., Janssen, C.R., 2015. Microplastics in
569 sediments: A review of techniques, occurrence and effects. *Mar. Environ. Res.* 111, 5-17.

570 Wilcox, C., van Sebille, E., Hardesty, B.D., 2015. Threat of plastic pollution to seabirds is global.
571 pervasive, and increasing. *Proc. Nat. Acad. Science.*
572 www.pnas.org/cgi/doi/10.1073/pnas.1502108112.

573 Woodall, L.C., Gwinnett, C., Packer, M., Thompson, R.C., Robinson, L.F., Paterson, G.L.J., 2015. Using
574 a forensic science approach to minimize environmental contamination and to identify
575 microfibrils in marine sediments. *Mar. Pollut. Bull.* 95, 40-46.

576 Woodall, L.C., Sanchez-Vidal, A., Canals, M., Paterson, G.L.J., Coppock, R., Sleight, V., Calafat, A.,
577 Rogers, A.D., Narayanaswamy, B.E., Thompson, R.C., 2014. The deep sea is a major sink for
578 microplastic debris. *Roy. Soc. Open Sci.* 1, 140317.

579 World Economic Forum (2016). The new plastics economy: Rethinking the future of plastics. The
580 World Economic Forum's Circular Economy Project. Geneva. 36pp.
581 http://www3.weforum.org/docs/WEF_The_New_Plastics_Economy.pdf

582 Wright, S.L., Thompson, R.C., Galloway, T.S., 2013. The physical impacts of microplastics on marine
583 organisms: A review. *Environ. Pollut.* 178, 483-492.

584 Yang, H., Turner, S., Rose, N.L., 2016. Mercury pollution in the lake sediments and catchment soils of
585 anthropogenically-disturbed sites across England. *Environ. Pollut.* 219, 1092-1101.

586 Zarfl, C., Matthies, M., 2010. Are marine plastic particles transport vectors for organic pollutants to
587 the Arctic? *Mar. Pollut. Bull.* 60, 1810-1814.

588 Zbyszewski, M., Corcoran, P.L., 2011. Distribution and degradation of fresh water plastic particles
589 along the beaches of Lake Huron, Canada. *Wat. Air Soil Pollut.* 220, 365-372.

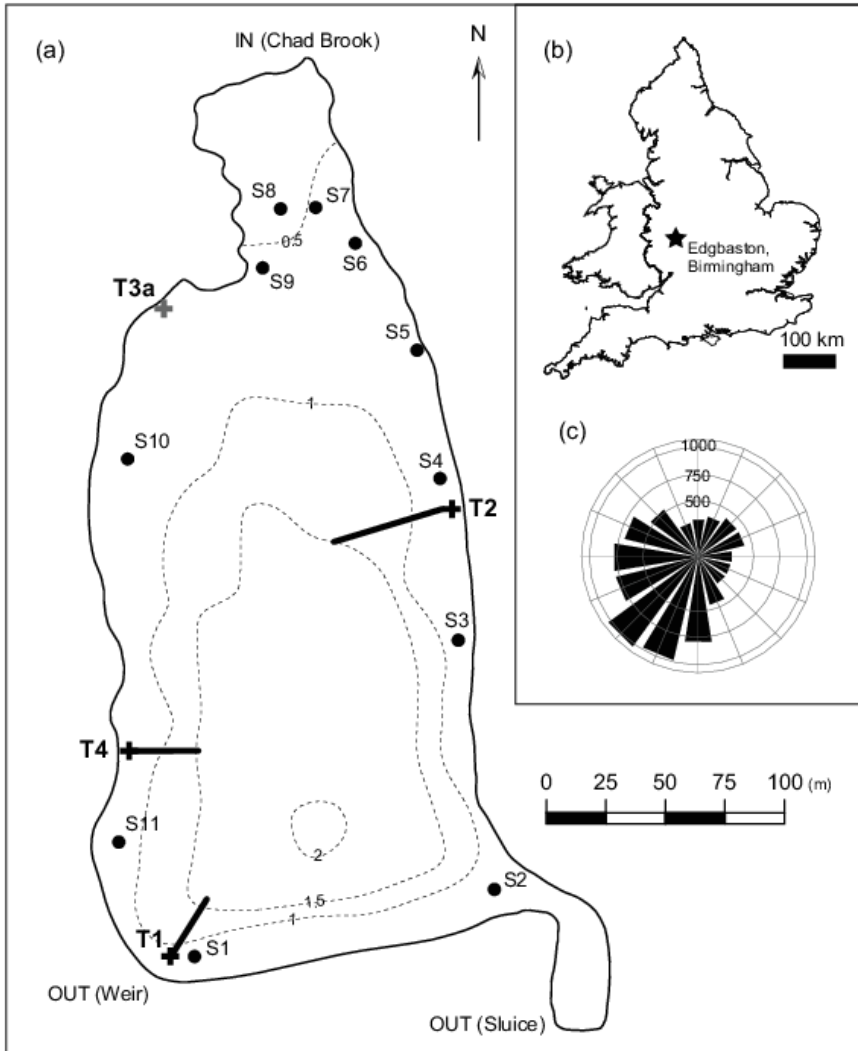
590 Zettler, E.R., Mincer, T.J. and Amaral-Zettler, L.A. (2013) Life in the "Plastisphere": Microbial
591 communities on plastic marine debris. *Environ. Sci. Technol.* 47, 7137-7146.

592 Zhang, K., Gong, W., Lv, J., Xiong, X., Wu, C., 2015. Accumulation of floating microplastics behind the
593 Three Gorges Dam. *Environ. Pollut.* 204, 117-123.

594
595
596
597
598
599

600 **Figure captions**

601 **Figure 1.** (a) Bathymetric map of Edgbaston Pool showing sampling locations (surface sediments S1-
602 S11) and transects (T1-T4). (b) Location of the lake in the UK. (c) Wind rose diagram for Birmingham
603 (hours per year from indicated direction). Data from www.metoblue.co



604

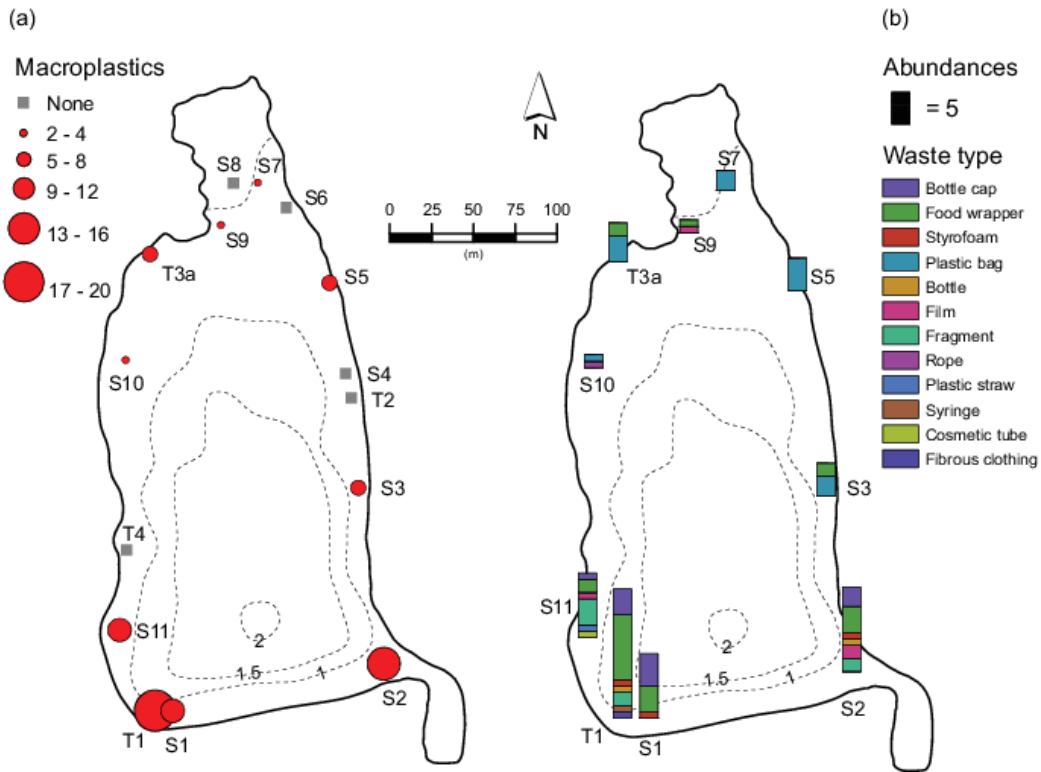
605

606 **Figure 1(d)** Clockwise from top left. Photograph of the Edgabston Pool looking north; a Mute swan's
607 (*Cygnus olor*) nest at the southern end of the lake incorporating plastic debris; retrieval of a heavily
608 biofouled plastic bag retrieved from the northern end of the lake during sampling; accumulation of
609 debris at the southern end. (All photographs: Simon Turner).



610
611
612
613
614
615
616
617

618 **Figure 2.** Macroplastic distribution in Edgbaston Pool. (a) Number of debris items found at each
 619 sampling location and (b) abundance divided by debris type.

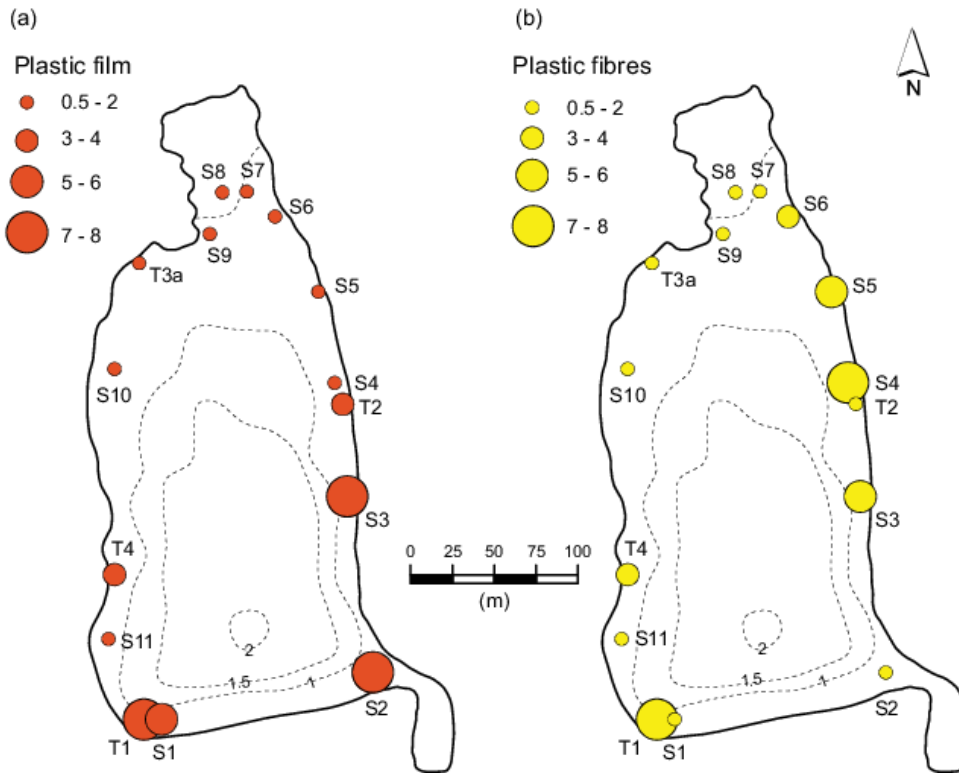


620
 621
 622

623

624 **Figure 3.** Microplastic concentrations (number particles / 100g dried sediment) in the surface
625 sediments of Edgbaston Pool. (a) Microplastic films and (b) fibres

626

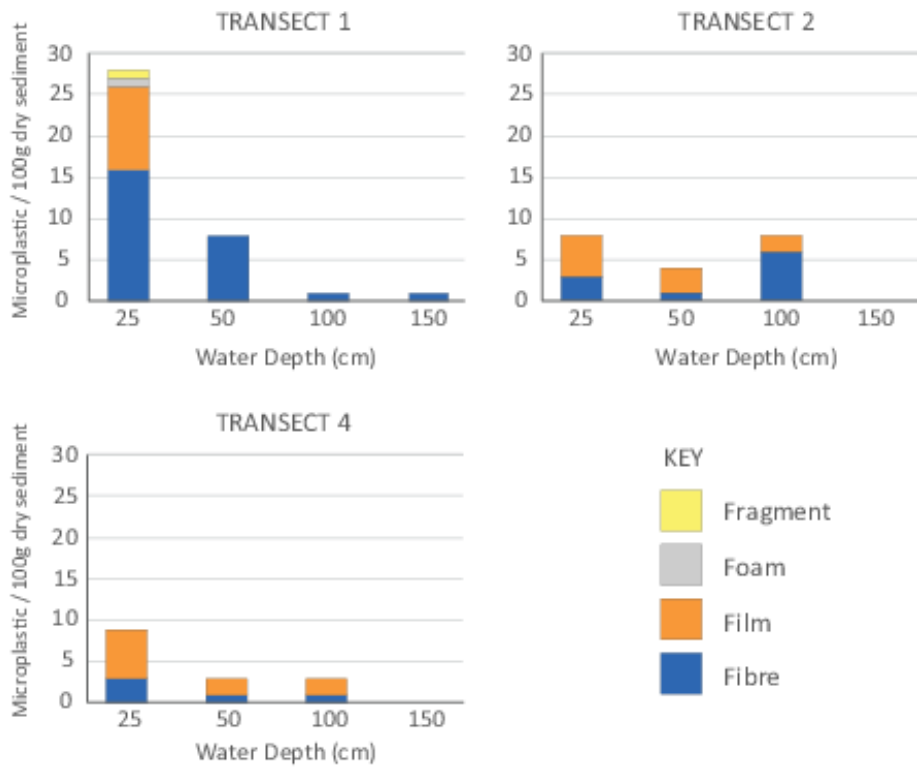


627

628

629

630 **Figure 4.** Microplastic concentrations (number particles / 100g dried sediment) subdivided by type in
631 transect sediment samples of Edgbaston Pool.

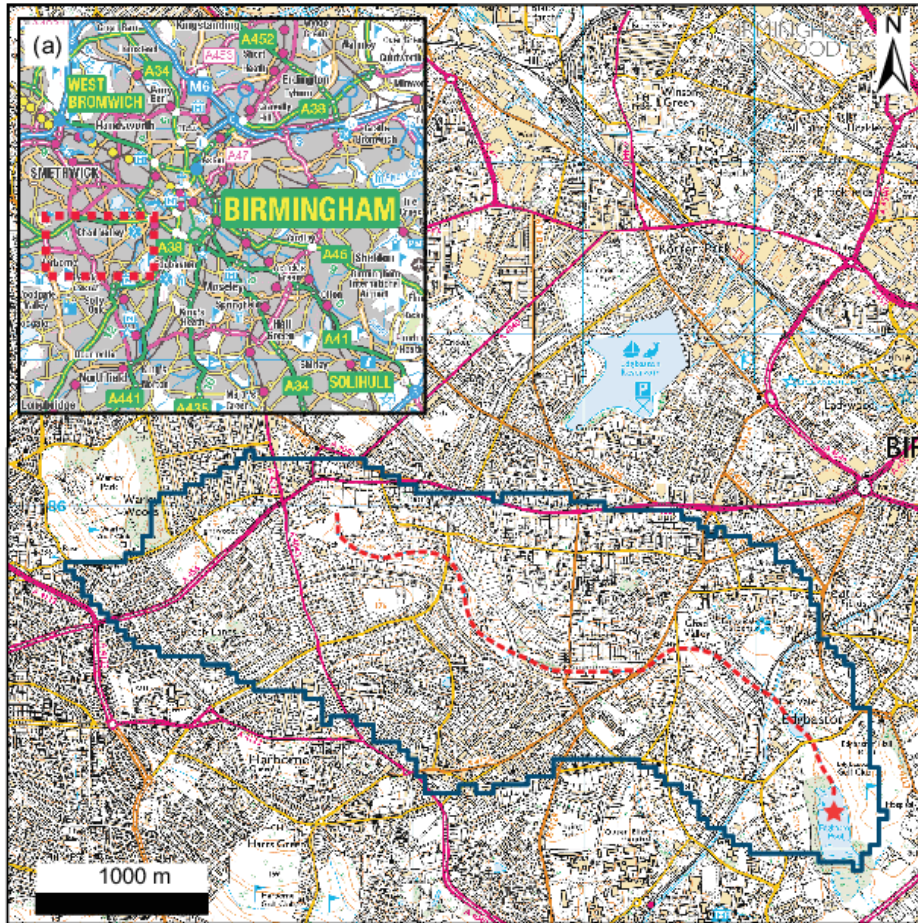


632
633
634

635
636
637
638
639
640
641

Supplementary Information.

Figure S1. (a) Location of Edgbaston Pool catchment (dashed rectangle) in SW Birmingham. Main map shows Edgbaston Pool (red star) and its catchment area (blue line) derived from OS Panorama dataset. Dashed red line on main map indicates the route of Chad Brook inflow stream.



Basemap © Crown Copyright and Database Right 2017 Ordnance Survey (Digimap Licence)

642