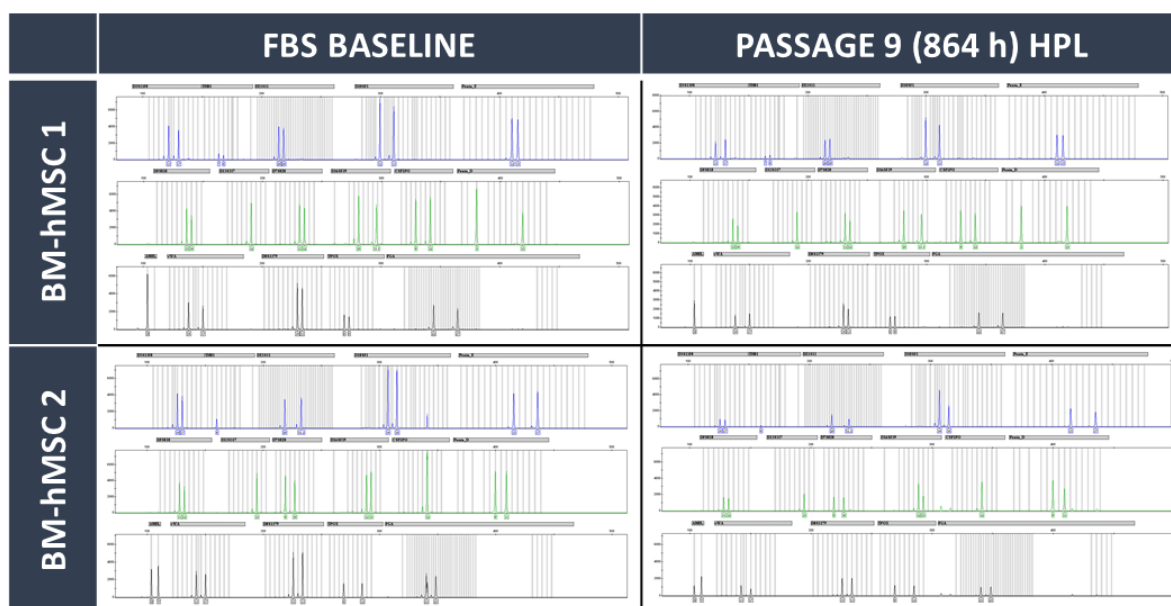


Supplementary Figure 1. Short tandem repeat analysis of both BM-hMSC lines at the end of the expansion process demonstrating retention of the 16 loci that are characteristic of hMSCs.

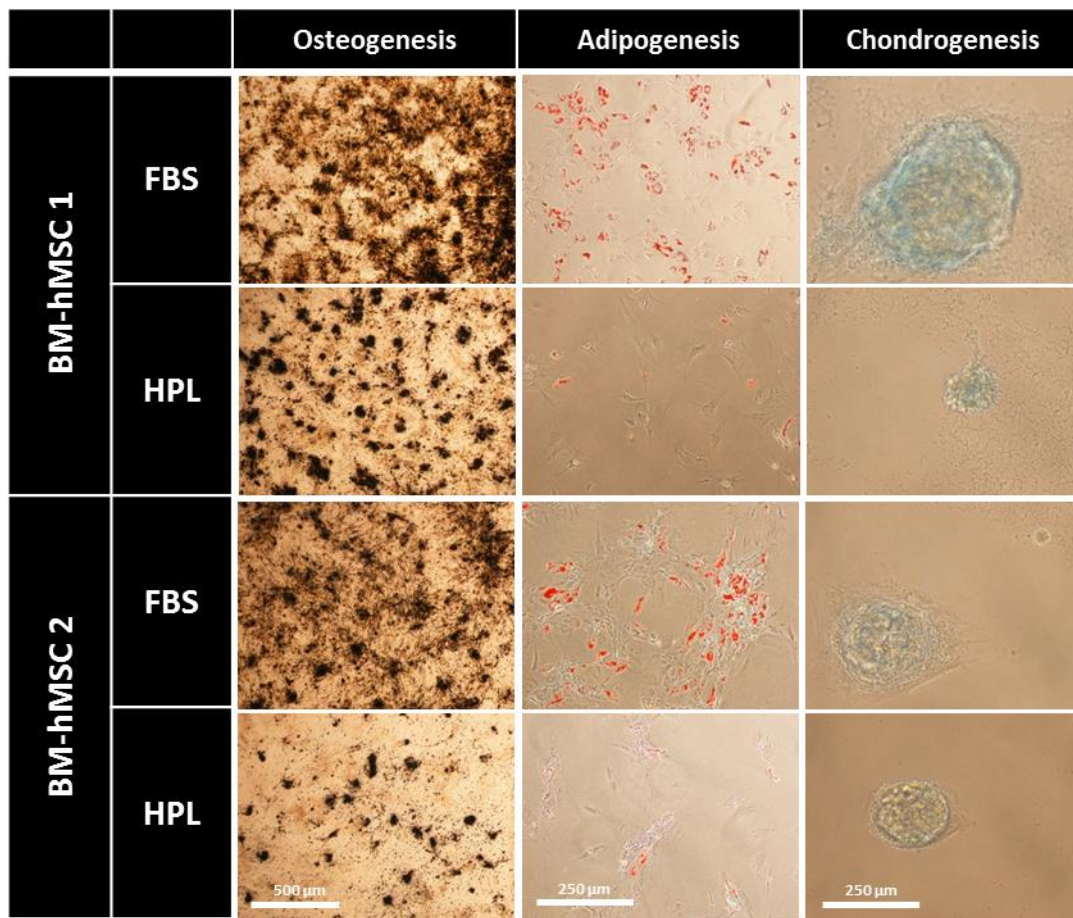
Supplementary Figure 2. Confirmation of the conformity to the International Society for Cellular Therapy criteria of both of the BM-hMSC lines in both conditions at the beginning and end of the expansion process. Demonstration of tri-lineage differentiation potential by (A) Von Kossa stain of osteogenic differentiation, (B) oil red o stain of adipogenic differentiation and (C) alcian blue stain of chondrogenic differentiation.

Supplementary Figure 3. Confirmation of the conformity to the International Society for Cellular Therapy criteria of both of the BM-hMSC lines in both conditions at the beginning and end of the expansion process. Showing percentage co-expression of CD105+, CD90+, CD73+, CD34- and HLA-DR-. Data are mean  $\pm$  SD (n = 4).

### Supplementary Figure 1



Supplementary Figure 2



Supplementary Figure 3

Condition	Co-expression (%)	
	Passage 3	Passage 9
FBS BM-hMSC 1	94.72 ± 1.09	98.7 ± 1.16
HPL BM-hMSC 1	95.67 ± 0.74	93.7 ± 0.95
FBS BM-hMSC 2	94.79 ± 0.79	98.4 ± 1.08
HPL BM-hMSC 2	95.15 ± 0.78	96.5 ± 0.93