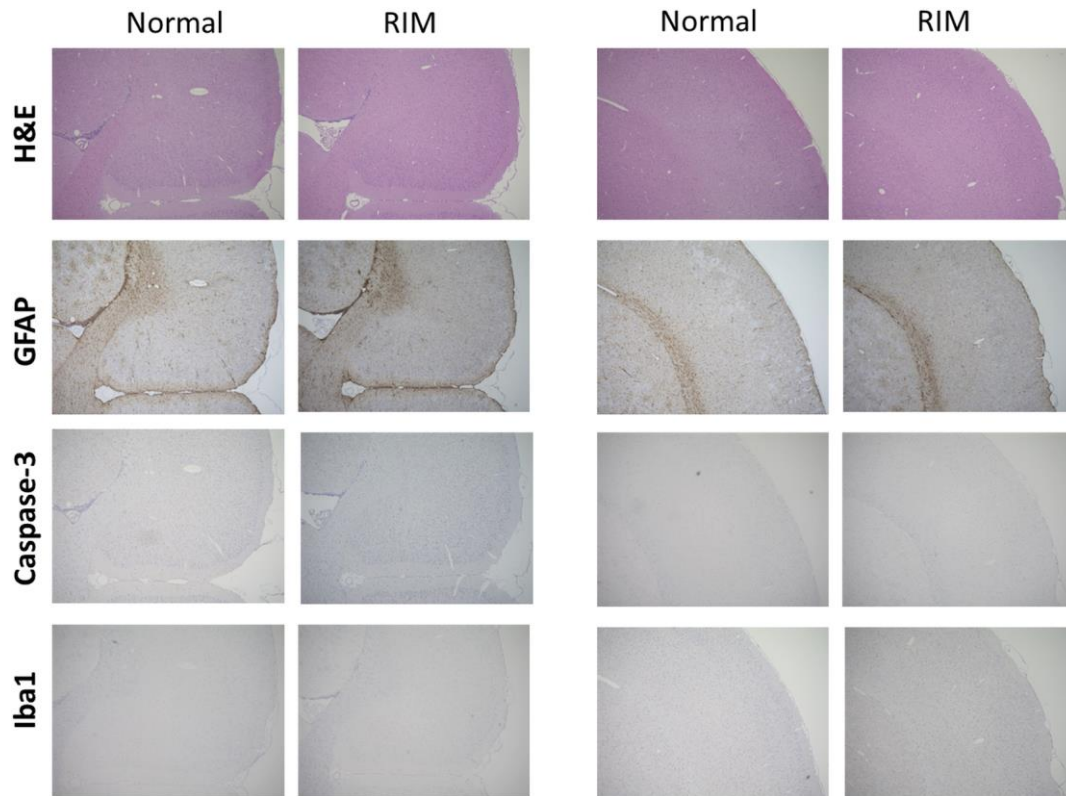
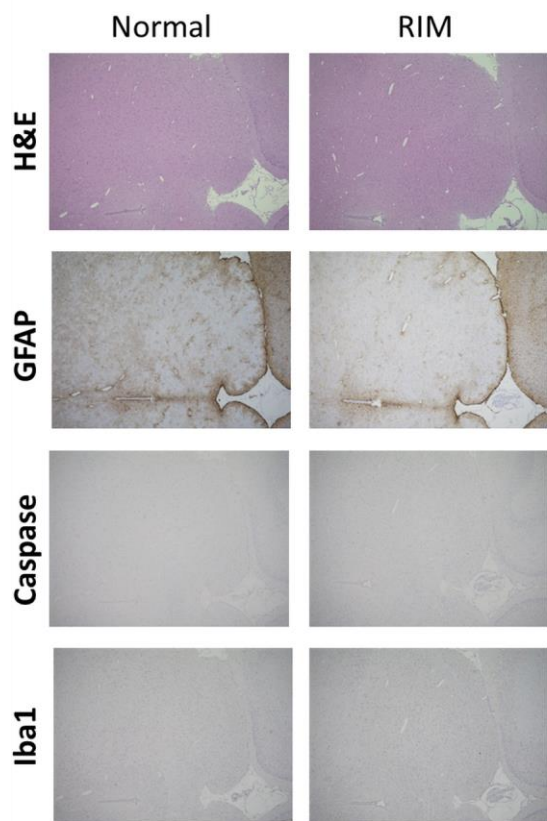


Supplementary Figures: Functional MRI of the Reserpine-Induced Putative Rat Model of Fibromyalgia Reveals Discriminatory Patterns of Functional Augmentation to Acute Nociceptive Stimuli

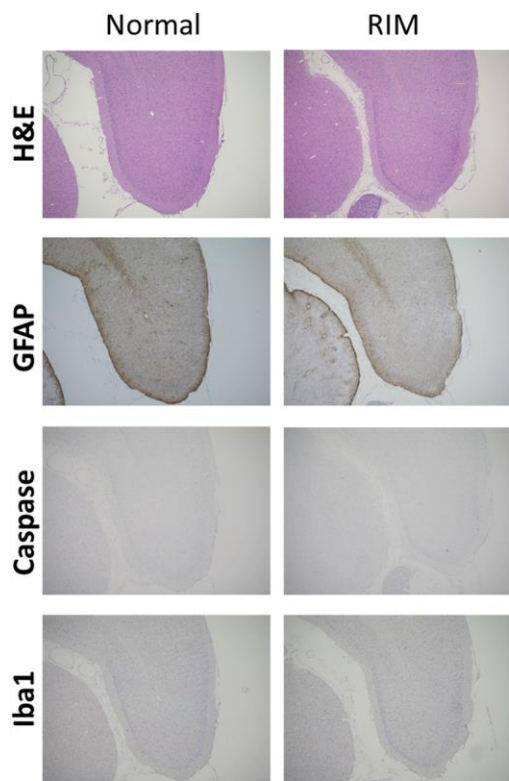
Jack A Wells, Sayaka Shibata, Akihiko Fujikawa, Masayasu Takahashi, Tsuneo Saga, Ichio Aoki



Supplementary Figure 1: H&E (row 1), GFAP (row 2), Caspase-3 (row 3), Iba1 (row 4) stained sections of brain tissue from a normal and RIM subject at different anatomical locations within a single coronal slice (+1.08 mm Bregma)



Supplementary Figure 2: H&E (row 1), GFAP (row 2), Caspase-3 (row 3), Iba1 (row 4) stained sections of brain tissue from a normal and RIM subject within a single coronal slice (-5.04mm Bregma)



Supplementary Figure 3: Caspase (row 1), H&E (row 1), GFAP (row 2), Caspase-3 (row 3), Iba1 (row 4) stained sections of brain tissue from a normal and RIM subject within a single coronal slice (-6.72mm Bregma)