

Figure 1. Cumulative incidence of mortality (a), AIDS or mortality (b), and virological success (c) after initiation of combined antiretroviral therapy (cART) by educational level.

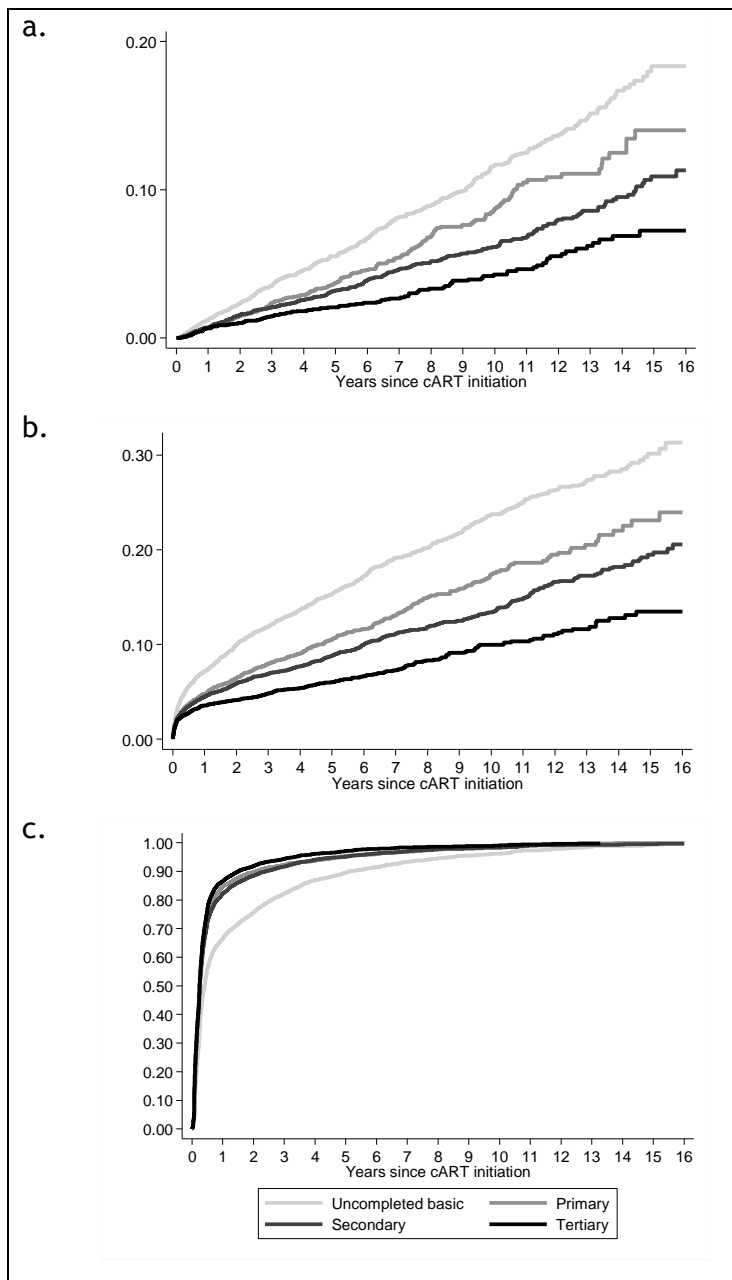


Figure 2. Estimated of in CD4 count after cART initiation from a piecewise linear mixed model. Baseline individual: no AIDS, male, MSM, cART initiation <2001, European origin, NNRTI-based initial cART combination, age 37 years and viral load of 5.4 log copies/mL.

