

SUPPLEMENTARY INFORMATION

Ice-core evidence of earliest extensive copper metallurgy in the Andes 2700 years ago

A. Eichler^{1,2*}, G. Gramlich^{1,2,3}, T. Kellerhals^{1,2}, L. Tobler^{1,2}, Th. Rehren⁴, and M. Schwikowski^{1,2,3}

¹ Paul Scherrer Institut, CH-5232 Villigen PSI, Switzerland

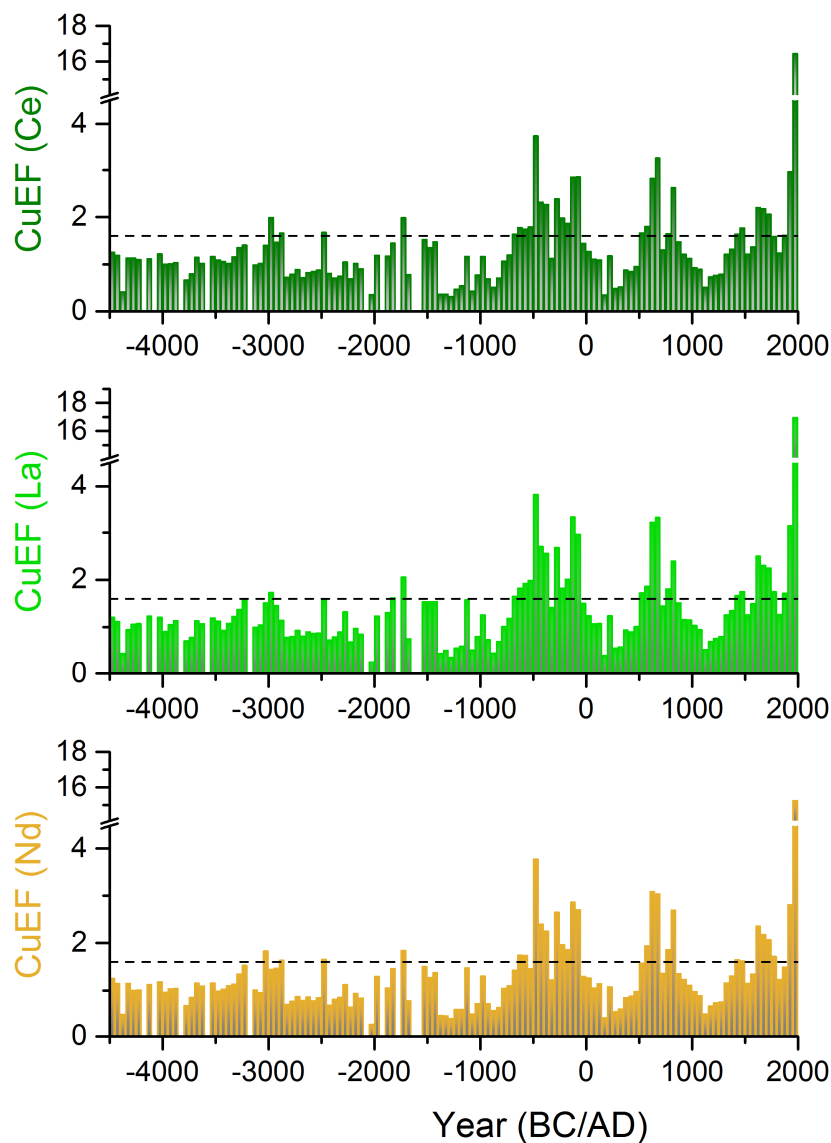
² Oeschger Centre for Climate Change Research, University of Bern, CH-3012 Bern, Switzerland

³ Department for Chemistry and Biochemistry, University of Bern, Freiestrasse 3, CH-3012 Bern, Switzerland

⁴ UCL Institute of Archaeology, 31-34 Gordon Square, London WC1H 0PY, UK

*Corresponding author:

e-mail: anja.eichler@psi.ch, phone: +41 56 310 2077, fax: +41 56 310 4435



Supplementary Figure S1: Comparison of CuEF records deduced using different lithogenic elements (Ce-dark green, La-light green, Nd-yellow). CuEFs are shown as 50 yr medians. The dashed lines represent the background level from mineral dust input of $EF=1.6$ (mean+ 2σ level of the period 4500-2000 BC). Only CuEFs exceeding the background level in at least two consecutive data points are considered to be anthropogenic Cu pollution from extensive Cu metallurgy.