

**CHK2 Overexpression and Mislocalization within Mitotic Structures Enhances Chromosomal Instability and Hepatocellular Carcinoma Progression**

Journal:	<i>Gut</i>
Manuscript ID	gutjnl-2016-313114.R2
Article Type:	Original Article
Date Submitted by the Author:	n/a
Complete List of Authors:	<p>Carloni, Vinicio; Universita degli Studi di Firenze, Department of Experimental and Clinical Medicine  Lulli, Matteo; University of Florence, Department of Clinical Biomedical Science, General Pathology Unit  Madiati, Stefania; University of Florence, Department of Experimental and Clinical Medicine  Mello, Tommaso; University of Florence, Department of Experimental and Clinical Biochemical Sciences, Gastroenterology Unit  Hall, Andrew; UCL Medical School, Royal Free Campus, Department of Histopathology  Luong, Tu Vinh; Royal Free Hospital, Department of Cellular Pathology  Pinzani, Massimo; University College London (UCL), Institute for Liver &amp; Digestive Health  Rombouts, Krista; University College London, UCL, Institute for Liver &amp; Digestive Health, Royal Free  Galli, Andrea; University of Florence, Clinical Pathophysiology, Gastroenterology</p>
Keywords:	GENETIC INSTABILITY, HEPATOBILIARY CANCER

## CHK2 Overexpression and Mislocalization within Mitotic Structures Enhances Chromosomal Instability and Hepatocellular Carcinoma Progression

Vinicio Carloni<sup>1</sup>, Matteo Lulli<sup>2</sup>, Stefania Madiati<sup>1</sup>, Tommaso Mello<sup>3</sup>, Andrew Hall<sup>4</sup>, Tu Vinh Luong<sup>4</sup>, Massimo Pinzani<sup>1,5</sup>, Krista Rombouts<sup>1,5\*</sup> and Andrea Galli<sup>3\*</sup>

<sup>1</sup>Department of Experimental and Clinical Medicine, <sup>2</sup>Department of Experimental and Clinical Biomedical Science, General Pathology Unit, <sup>3</sup>Department of Experimental and Clinical Biochemical Sciences, Gastroenterology Unit, University of Florence, Florence, Italy, <sup>4</sup>Royal Free Hospital, Department of Cellular Pathology, London, UK, <sup>5</sup>University of London (UCL) Institute for Liver & Digestive Health, London, United Kingdom  
MP and KR have relocated to the University of London, London, UK

\* These authors contributed equally.

**Correspondence should be addressed to:** Vinicio Carloni MD., PhD, Department of Experimental and Clinical Medicine. University of Florence, Largo Brambilla 3, 50134, Florence, Italy. Phone: +39-55-2758091; Fax: +39-55-7947104; E-mail: [vinicio.carloni@unifi.it](mailto:vinicio.carloni@unifi.it)

**Key words:** DNA damage response proteins, DNA double-strand breaks, genomic instability, defective chromosome segregation, DNA damage

**Abbreviations list:** CIN, chromosomal instability; Chk2, checkpoint kinase 2; FHA, forkhead-associated domain; SCD, SQ/TQ cluster domain; hTERT, human telomerase reverse transcriptase; Nek2, NIMA related kinase 2; CENP-H, centromere protein H; pHH3, phospho-Histone H3; Rb, retinoblastoma protein; HA, hemagglutinin; RFP, red fluorescent protein.

**Count Words: 3938**

## Significance of this study

What is already known on this subject?

- Chromosomal instability (CIN), is a major hallmark of hepatic tumorigenesis and hampers prognosis and therapy. The underlying mechanisms are not well characterized.
- CIN is regarded as an ongoing elevated frequency of mitotic errors that leads to numerical and structural chromosome aberrations in a significant proportion of cell divisions leading to intra-tumoral heterogeneity and drug resistance.
- DNA damage caused by genotoxic agents activates DNA damage response checkpoint kinase 2 (Chk2) protein expression
- Mislocalization of proteins, including oncoproteins, tumor suppressors, and other cancer-related proteins, can interfere with normal cellular function and cooperatively drive tumor development

What are the new findings?

- Mitotic errors represented by lagging chromosomes cause DNA damage and overexpress Chk2 throughout hepatic tumorigenesis
- Chk2 and the activation/phosphorylated forms of Chk2 mislocalize within the mitotic structures in the presence of DNA damage contributing to increased numbers of cells with lagging chromosomes. In contrast, knockdown of Chk2 reduces the number of cells with lagging chromosomes and the mitotic index
- The Chk2 forkhead-associated domain (FHA) is responsible for the mislocalization of the protein at the mitotic structures
- Chk2 is expressed at the nuclear level in a subset of human HCC and this aspect correlates with HCC progression. Moreover, CHK2 expression is significantly higher in HCC patients with mutated TP53, a hallmark of genomic instability, than in those with mutated CTNNB1/beta-catenin.

How might it impact on clinical practice in the foreseeable future?

- The study reveals a new mechanistic insight in the co-involvement of Chk2 in CIN i.e. Chk2 mislocalization, hence indicating the possibility to use Chk2 as a new drug target in HCC

1  
2  
3  
4  
5  
6  
7  
8  
9  
10  
11  
12  
13  
14  
15  
16  
17  
18  
19  
20  
21  
22  
23  
24  
25  
26  
27  
28  
29  
30  
31  
32  
33  
34  
35  
36  
37  
38  
39  
40  
41  
42  
43  
44  
45  
46  
47  
48  
49  
50  
51  
52  
53  
54  
55  
56  
57  
58  
59  
60

- The findings of this study suggest Chk2 as a putative biomarker that can be used to detect DNA damage and chromosomal instability in HCC providing a valuable support, not only for prognosis, but also for identifying patients who are likely to have a response to therapy.

Confidential: For Review Only

## ABSTRACT

### Objective

Chromosomal instability (CIN) is the most common form of genomic instability, that promotes hepatocellular carcinoma (HCC) progression by enhancing tumour heterogeneity, drug resistance and immunity escape. CIN *per se* is an important factor of DNA damage, sustaining structural chromosome abnormalities but the underlying mechanisms are unknown.

### Design

DNA-damage response protein Chk2 expression was evaluated in an animal model of diethylnitrosamine-induced HCC characterized by DNA damage and elevated mitotic errors. Chk2 was also determined in two discrete cohorts of human HCC specimens. To assess the functional role of Chk2, gain on- and loss-of-function, mutagenesis, karyotyping, and immunofluorescence/live imaging were performed by using HCT116, Huh7 and human hepatocytes immortalized with hTERT gene (HuS).

### Results

We demonstrate that mitotic errors during HCC tumorigenesis cause lagging chromosomes/DNA damage and activation of Chk2. Overexpression/phosphorylation and mislocalization within the mitotic spindle of Chk2 contributes to induce lagging chromosomes. Lagging chromosomes and mitotic activity are reversed by knockdown of Chk2. Furthermore, up-regulated Chk2 maintains mitotic activity interacting with Aurora B kinase for chromosome condensation and cytokinesis. The forkhead-associated (FHA) domain of Chk2 is required for Chk2 mislocalization to mitotic structures. In addition, retinoblastoma protein phosphorylation contributes to defective mitoses. A cohort and independent validation cohort show a strong cytoplasm-to nuclear Chk2 translocation in a subset of HCC patients.

### Conclusions

The study reveals a new mechanistic insight in the co-involvement of Chk2 in HCC progression. These findings propose Chk2 as a putative biomarker to detect CIN in HCC providing a valuable support for clinical/therapeutical management of patients.

## Introduction

Hepatocellular carcinoma (HCC) is the primary malignancy of hepatocytes and the most frequent solid tumour of the liver. Half a million cases occur annually and the World Health Organization has recently ranked HCC as the second most lethal cancer worldwide [1]. Different etiological factors such as hepatitis B and C virus, alcohol and diabetes cause liver injury followed by inflammation, necrosis and hepatocytes proliferation [2]. Continuous cycles of this destructive–regenerative process culminates in liver cirrhosis which is characterized by regenerating nodules that progress to dysplastic nodules and ultimately HCC [3,4]. More than 90% of HCC, including dysplastic nodules in cirrhotic liver, possess chromosomal aberrations suggesting that chromosomal defects occur at early stages of tumour development and several attempts have been made to connect different chromosomal aberration patterns as specific subsets of HCC, albeit with limited success [5-7]. A common feature of human HCC and dysplastic nodules is represented by chromosomal instability (CIN). Various types of chromosomal aberrations, including numerical (aneuploidy) and structural (e.g., translocations, deletions), are found in HCC and are linked to tumorigenesis [8,9]. An important aspect in studying HCC tumorigenesis is to distinguish between the state of the karyotype, and the rate of karyotypic change. In fact, aneuploidy is not synonymous with CIN, because aneuploid tumours are stable with uniform karyotype and phenotype [10-12]. Conversely, there is an increased rate of CIN generating diverse karyotypes within the same tumour. This yields a heterogeneous tumour cell population that has the ability to undergo selective evolution in term of drug resistance and immune system escape mechanisms [13-15]. CIN is regarded as an ongoing elevated frequency of mitotic errors that leads to additional chromosome gains or losses in a significant proportion of cell divisions. Our hypothesis is that CIN *per se* is also an important mechanism of DNA damage inducing structural chromosome aberrations in HCC. To verify this hypothesis we utilized checkpoint kinase 2 (Chk2) as a central effector of the cell response to DNA damage. In fact, Chk2 has been described to detect a variety of DNA lesions caused by exogenous and endogenous genotoxic agents. Our aim is to investigate the expression of this kinase in hepatic carcinogenesis and its correlation with the genesis of structural chromosomal

1  
2  
3 aberrations. Here, we provide evidence that defective chromosome segregation i.e.  
4 lagging chromosomes causes DNA damage and determines an  
5 overexpression/phosphorylation of Chk2. Furthermore, the mislocalization of Chk2  
6 with components of the mitotic spindle contributes to chromosome missegregations.  
7 These data are corroborated with the observation of an increased Chk2 and nuclear  
8 translocation in two independent cohorts of human HCC specimens.  
9  
10  
11  
12  
13  
14  
15  
16  
17  
18  
19  
20  
21  
22  
23  
24  
25  
26  
27  
28  
29  
30  
31  
32  
33  
34  
35  
36  
37  
38  
39  
40  
41  
42  
43  
44  
45  
46  
47  
48  
49  
50  
51  
52  
53  
54  
55  
56  
57  
58  
59  
60

## Materials and Methods

Please refer to the Supplementary Materials and Methods for more detailed descriptions.

### Tissue Samples and Immunohistochemistry Assays.

*Florence cohort, University Hospital of Florence;* formalin-fixed, paraffin-embedded tissue were obtained from an archive of liver biopsies of patients diagnosed with HCC. H&E-stained tissue sections of 49 patients were reviewed, and areas of cirrhotic and HCC were identified. Chk2 antigen retrieval was performed by heating in citrate buffer pH 6.0 at 98°C for 30 minutes. Non-specific signal was eliminated by peroxidase block for 10 minutes at RT. Primary antibody was incubated at room temperature overnight in a humidified chamber followed by HRP-conjugated secondary antibody incubation for 30 minutes at room temperature. Antibody binding was revealed by DAB and reaction was stopped by immersion of tissue sections in distilled water once brown colour appeared. Tissue sections were counterstained by hematoxylin, dehydrated in graded ethanols and mounted. All reagents for immunohistochemistry were from Dako. Appropriate positive and negative controls were included for each run of immunohistochemistry. Chk2 expression was determined according to H-score method. For H-score assessment, 10 fields were chosen at random at x400 magnification and the staining intensity in the malignant cell nuclei was scored as 0, 1, 2, and 3 corresponding to the presence of negative, weak, intermediate, and strong brown staining, respectively. The total number of cells in each field and the number of cells stained at each intensity were counted. The average percentage positive was calculated, and a H-score between 0 and 300 was obtained where 300 was equal to 100% of tumor cells stained brown strongly. The positive cut off was considered  $\geq 100$  (supplemental Figure S1). Chk2 expression in biopsy sections was scored by a pathologist and two researchers independently.

*London cohort, Royal Free Hospital;* formalin-fixed, paraffin-embedded surgical specimens from consecutive patients diagnosed with HCC were retrieved from Royal Free Hospital archives. All samples were stained with H&E and the sections were



1  
2  
3 reviewed and suitable areas of cirrhosis and HCC were identified in 20 samples.  
4  
5 Antigen retrieval was performed by microwaving (720W) in pH 6.0 sodium citrate buffer  
6  
7 for 30 mins. Endogenous peroxidase and non-specific binding of primary antibody was  
8  
9 blocked. The primary Chk2 antibody was incubated at overnight at 5°C. Primary  
10  
11 antibody detection was carried out using the Novolink polymer detection system  
12  
13 (Novocastra). Tissue sections were counterstained with Mayer's hematoxylin.

14  
15  
16 **Experimental hepatocarcinogenesis.** Twenty-five female Wistar rats (210-225 g) were  
17  
18 given diethylnitrosamine 50 mg/L ad libitum in their drinking water for a period of 10  
19  
20 weeks as previously described [16]. Another group of five animals were maintained as  
21  
22 controls. All animals were administered a standard laboratory diet and were weighed  
23  
24 each week. Five animals for each time point were sacrificed on week 4, 6, 8, 10 and,  
25  
26 14. Tumours and liver tissues were removed and fixed in 10% neutral buffered formalin.  
27  
28 Liver sections (5µm) were cut from paraffin-embedded blocks and stained Chk2  
29  
30 (Abcam, #ab47433), phospho-Histone H2A.X (Cell Signaling, #9718) and hematoxylin  
31  
32 and eosin (H&E) for histological examination and expression were determined  
33  
34 according to H-score method.

### 35 **CHK2 Expression in HCC samples from Cancer Genome Atlas (TCGA) database.**

36  
37 The TCGA-LIHC cohort, containing 377 cases, was used to validate CHK2 expression  
38  
39 levels in distinct subtypes of HCC. The TCGA database (<https://gdc-portal.nci.nih.gov>)  
40  
41 was accessed on November 16, 2016 through the cGbioportal website  
42  
43 (<http://www.cbioportal.org/>) to retrieve patients with either TP53 or CTNNB1 mutation.  
44  
45 The TCGA\_participant\_barcode was used to download CHK2 expression from RNA-seq  
46  
47 data using the firebrowse portal (<http://firebrowse.org>). Patients with co-occurrent  
48  
49 mutations of TP53 and CTNNB1 were excluded from the analysis. CHK2 expression  
50  
51 levels were retrieved for 101 patients with TP53 mutation and 85 patients with CTNNB1  
52  
53 mutation. Statistical analysis was performed using the Mann-Whitney test with  
54  
55 GraphPad 6 software.  
56  
57  
58  
59  
60

## Results

### Chk2 is overexpressed in a subset of human HCC

To test our hypothesis that hepatic tumorigenesis *per se* could be a cause of DNA damage and structural chromosome aberrations, an animal model of diethylnitrosamine-induced HCC was employed which induced macroscopical visible tumours after 14 weeks (Figure 1A). This model has previously been established to induce elevated mitotic errors, DNA damage and chromosome aberrations [17]. Using this model we can compare the expression levels of DNA damage response proteins induced by the genotoxic activity of diethylnitrosamine with a later phase represented exclusively by tumorigenesis. Therefore, Chk2, a DNA damage-response checkpoint kinase, and phospho-Histone H2A.X (Ser139) a component of chromatin which becomes phosphorylated following DNA damage (e.g. DNA double-stranded breaks) were investigated [18]. As shown in Figure 1B several nuclei of cancer cells exhibited an increased expression of Chk2 and phospho-Histone H2A.X revealing the presence of DNA damage. A timeline analysis of liver sections demonstrated a two-fold increase in Chk2 basal levels at 4 weeks followed by decreased values after 8 weeks (Figure 1C). In contrast, by 14 weeks tumours were macroscopically visible and histologically evident in 80% of animals. Immunostaining of HCC sections showed a significant increased expression of Chk2 and phospho-Histone H2A.X (Figure 1C and 1D) when compared with liver sections without evidence of tumours (8 weeks). Taken together, these data showed that the increased expression of Chk2 reflected a response triggered by DNA damage during tumorigenesis.

To extend these findings to humans, the expression of Chk2 in patients with cirrhotic-related HCC and normal liver was examined in liver biopsies from hospital archives (Florence cohort, supplemental Table 1). A nuclear staining of Chk2 was detectable in distinctive histotypes of HCC (supplemental Figure S2 and S3). More specifically, the expression level of Chk2 in different grades of HCC was evaluated. Remarkably, within histological grade II and III, significant quantitative differences between positive and negative Chk2 patients were found ( $p < 0.001$ ). Overall, these data demonstrated that

1  
2  
3 Chk2 nuclear positivity was found in 63.2% (31 of 49) of HCCs analyzed (supplemental  
4 Table 2 ). A separate validation cohort of patients was examined at Royal Free Hospital,  
5 London (supplemental Table 3). Normal liver tissue showed a moderate and diffuse  
6 cytoplasmic staining, whereas Grade 1 specimens were characterized with weak focal  
7 cytoplasmic Chk2 staining. In Grade 2, a Chk2 perinuclear and nuclear accumulation  
8 was observed. Specimens with Grade 3 showed exclusively a clear and strong nuclear  
9 staining, without cytoplasmic and perinuclear Chk2 staining (Figure 2a and  
10 supplemental Table 4). Furthermore, the expression levels of CHK2 were analyzed in a  
11 public available cohort of HCC from the TCGA database. We found a highly-significant  
12 increase of CHK2 expression in HCC with mutated TP53, a hallmark of genomic  
13 instability, with respect to those with CTNNB1/beta-catenin mutation (Figure 2b).  
14  
15  
16  
17  
18  
19  
20  
21  
22  
23  
24  
25  
26

### 27 **Defective chromosome segregations cause DNA damage**

28 The previous observations prompted us to investigate the functional role of Chk2. For  
29 this reason, three different cell lines were employed. The colon carcinoma cell line  
30 HCT116 was used i.e. a near-diploid cell line that faithfully segregates chromosomes to  
31 maintain a stable karyotype and is commonly employed in CIN studies [19,20].  
32 Secondly, the HCC cell line Huh7 was used which is a stable hyperdiploid karyotype  
33 with altered chromosomal structures and finally HuS cells were used marked with an  
34 unstable karyotype [21]. HuS cells are human hepatocytes immortalized with human  
35 telomerase reverse transcriptase (hTERT), a gene described commonly activated in  
36 human HCC [8, 9]. HuS cells just established in culture (0 generation) and hereafter  
37 referred to as HuS0gen showed a karyotype with a distribution of 46 chromosomes  
38 (Figure 3A) and expressed low levels of Chk2 protein in comparison to HCT116 and  
39 Huh7 (Figure 3B). The HuS0gen cells were maintained in culture and after 30  
40 consecutive generations (HuS30gen) were re-examined to verify the karyotype status.  
41 The cells showed a distribution near-triploid, with many structural chromosomal defects  
42 (Figure 3C and supplemental Figure S4A) and importantly this aspect was associated  
43 with increased expression of Chk2 protein, (Figure 3B). Likewise with the murine  
44 model, we evaluated the expression levels of phospho-Histone H2A.X (Ser139) in all  
45  
46  
47  
48  
49  
50  
51  
52  
53  
54  
55  
56  
57  
58  
59  
60

1  
2  
3 the cell lines studied. As shown in Figure 3D, both HuS0gen and HuS30gen cells  
4 exhibited high levels of phospho-Histone H2A.X, although with different levels of  
5 expression. These findings indicate the presence of DNA double-strand breaks, a  
6 hallmark of DNA damage, in HuS cells.  
7  
8  
9

### 10 11 12 **Overexpressed Chk2 mislocalizes with mitotic structures in HuS30gen cells but** 13 **not in HCT116 and Huh7.** 14

15 The finding of overexpressed Chk2 in both karyotyped stable HCT116 and Huh7 and in  
16 unstable karyotyped HuS30gen did not demonstrate a specific role for Chk2 in defective  
17 chromosome segregation. Therefore, we analyzed the cell lines HCT116, Huh7,  
18 HuS0gen and HuS30gen by immunofluorescence to examine a possible altered  
19 localization of Chk2 with the mitotic structures. Chk2 showed a localization to the  
20 spindle poles of metaphase mitotic structures in HCT116, Huh7, and HuS0gen (Figure  
21 4A). Very importantly, HuS30gen cells showed a robust localization of Chk2 with all  
22 metaphase mitotic structures indicating a clear mislocalization of Chk2 (Figure 4A and  
23 supplemental Figure S4B). These results suggest that in HuS0gen cells, expressing  
24 low levels of DNA damage, Chk2 weakly co-localized with the mitotic spindle  
25 components, whereas Chk2 is increased and strongly associated with all mitotic  
26 structures in HuS30gen cells that are expressing high levels of DNA damage. To  
27 further address these findings we stably transfected HuS0gen with HA-tagged Chk2,  
28 HuS0gen overexpressing Chk2 exhibited Chk2 localization with mitotic structures as  
29 shown in Figure 4B. Next, we measured the number of lagging chromosomes (Figure  
30 4C) in HuS0gen, HuS30gen, and in HuS0gen stably transfected with HA-tagged Chk2  
31 to mimic overexpression of Chk2. As shown in Figure 4D, overexpression of Chk2  
32 significantly correlated with high number of mitoses with lagging chromosomes in  
33 HuS30gen, and in HuS0gen overexpressing HA-tagged Chk2. These data clearly  
34 indicate that indeed overexpression and mislocalization of Chk2 itself contributes to  
35 defective chromosome segregations. Furthermore, to assess that the increased  
36 expression of Chk2 was specifically related to those mitoses with defective  
37 chromosome segregations and not a random deregulation of proteins, the expression  
38 of Nek2 (NIMA related kinase 2) protein was evaluated. Nek2 is a protein located at the  
39  
40  
41  
42  
43  
44  
45  
46  
47  
48  
49  
50  
51  
52  
53  
54  
55  
56  
57  
58  
59  
60

1  
2  
3 centrosome/spindle poles and responsible for chromosomal defective segregations [22].  
4  
5 HCT116 and Huh7 cells showed a strong Nek2 expression whereas both HuS0gen and  
6  
7 HuS30gen cells expressed low levels of Nek2 (supplemental Figure S5) suggesting that  
8  
9 the previously observed overexpression of Chk2 in Hus30gen was a specific event that  
10  
11 coincided with structural chromosomal defects and DNA damage.  
12  
13

### **Chk2 overexpression is correlated with increased chromosomal missegregations**

14  
15  
16  
17 The findings that HuS30gen express high levels of Chk2 protein correlating with  
18  
19 DNA damage (Figure 3B and 3D), prompted us to investigate the effects of knocking  
20  
21 down expression of CHK2 in HuS30gen cells by retroviral-mediated short hairpin RNA  
22  
23 (shRNA) transduction. A pool of four shRNA targeting Chk2 resulted in effective  
24  
25 decrease of the protein (Figure 5A). It is important to note that silencing CHK2 coincided  
26  
27 with a significant reduction of the number of HuS30gen cells with lagging chromosomes  
28  
29 and HuS30gen mitotic index. To address any off target effects of the hairpins, we  
30  
31 rescued the mitotic index and the number of cell with lagging chromosomes of the  
32  
33 knockdown HuS30gen by expressing a myc-tagged version of Chk2 that circumvents  
34  
35 the shRNA directed against human Chk2 (Figure 5B and 5C). These data demonstrate  
36  
37 that Chk2 overexpression is correlated with increased chromosomal missegregation  
38  
39 and mitotic index.  
40  
41

### **Defective mitoses-related DNA damage promotes Chk2 phosphorylation and mislocalization within mitotic structures.**

42  
43  
44  
45 Human CHK2, is a 543 amino acid protein that consists of a N-terminal SQ/TQ cluster  
46  
47 domain (SCD), a central forkhead-associated (FHA) domain, and a C-terminal  
48  
49 serine/threonine kinase domain [23]. The SCD consists of multiple SQ/TQ (Ser-Gln/Thr-  
50  
51 Gln) motifs with Thr68 being the primary site to be phosphorylated in response to DNA  
52  
53 damage followed by phosphorylation of Thr387 in the activation loop of the kinase  
54  
55 domain [24, 25]. Therefore, the protein expression of phospho-Thr68-Chk2 and  
56  
57 phospho-Thr387-Chk2 in HuS30gen and HuS0gen stably transfected with HA-tagged  
58  
59  
60

1  
2  
3 Chk2 were assessed. As shown in Figure 5D phospho-Thr68-Chk2 and phospho-  
4 Thr387-Chk2 were highly expressed in HuS30gen and in HuS0gen stably transfected  
5 with HA-Chk2, but not in HuS0gen as expected. Furthermore, phospho-Thr68-Chk2  
6 revealed a robust localization with components of the mitotic spindle as previously  
7 shown for Chk2. In particular, a prominent association of phospho-Thr68-Chk2 was  
8 observed with mitotic structures such as the spindle poles, kinetochores and midbody in  
9 Hus30gen cells, (Figure 5E, *upper panels*). In contrast, Huh7 cells expressing low  
10 levels of DNA damage ( see Figure 3D) did not show co-localization of phospho-  
11 Thr68-Chk2 with mitotic structures, (Figure 5E, *lower panels*). Taken together, these  
12 results reveal an overexpression/mislocalization of phosphorylated Chk2, which is  
13 correlated with its activation status, and manifestations of lagging chromosomes-  
14 induced DNA damage.  
15  
16  
17  
18  
19  
20  
21  
22  
23  
24  
25  
26  
27

### 28 **Up-regulated Chk2 cooperates with Aurora B for chromosome condensation and** 29 **cytokinesis.** 30

31 As previously shown the typical localization of activated Chk2 in HuS30gen cells was  
32 observed in kinetochores and specifically the midbody, suggesting a possible interaction  
33 with Aurora B kinase. This protein is known to be involved in chromosome  
34 condensation, the assembly of the spindle midzone in anaphase and the midbody  
35 during telophase. Furthermore, Aurora B kinase has been identified as an effective  
36 predictor of aggressive HCC recurrence, in relation to genomic instability [26].  
37 Therefore, HuS0gen cells were transfected with HA-tagged Chk2 and  
38 immunofluorescence analyses revealed a co-localization of Chk2 with Aurora B  
39 throughout all mitotic phases, and this co-localization was also present in cells marked  
40 with lagging chromosomes (Figure 6A and 6B). Aurora B is responsible for the  
41 phosphorylation of histone H3 (pHH3), and pHH3 serine residue (Ser-10) is considered  
42 to be a crucial event for the onset of mitosis. The utility of pHH3 to identify mitoses has  
43 been demonstrated in several cancer studies [27-29]. As, the co-localization of Aurora B  
44 with Chk2 was demonstrated we further explored the co-localization of overexpressed  
45 HA-Chk2 with pHH3. As shown in Figure 6C, Chk2 exhibited a striking co-localization  
46  
47  
48  
49  
50  
51  
52  
53  
54  
55  
56  
57  
58  
59  
60

1  
2  
3 with pHH3. Overall, the data so far demonstrate that in unstable HuS cells during  
4 mitosis, lagging chromosomes cause DNA damage, overexpression of Chk2 which  
5 localizes to all mitotic structures. This overexpressed and mislocalized Chk2 protein  
6 contributes to a constant mitotic activity and more important Aurora B kinase and pHH3  
7 interact with Chk2. This favours a possible scenario where an overexpressed and  
8 mislocated Chk2 overrules the signalling specificity at distinct mitotic checkpoints  
9 inducing itself chromosomal aberrations, hence CIN.  
10  
11  
12  
13  
14  
15  
16

### 17 **The forkhead associated domain (FHA) determines Chk2 mislocalization to** 18 **mitotic structures and is essential for DNA damage response**

19  
20 To understand how Chk2 is recruited to the mitotic structures in such a specific manner,  
21 we investigated Chk2 specific domain(s) that are required for Chk2 localization. A  
22 series of RFP-tagged Chk2 variants were created, each variant carrying a point  
23 mutation or a deletion, and were expressed and localized individually in HuS30gen. The  
24 RFP-Chk2D347A, a kinase-inactive mutant, localized similarly as shown for RFP-Chk2  
25 (Figure 7A). This indicated that the kinase activity is dispensable for Chk2  
26 mislocalization (Figure 7B). The FHA domain of Chk2 has been proposed to mediate  
27 localization of Chk2 to mitotic structures for the reason that FHA domains function as  
28 phospho-threonine-binding protein motifs. The deletion of the Chk2 FHA domain  
29 disrupted the localization of the protein to mitotic structures such as the spindle poles  
30 and kinetochores indicating that the deletion of the FHA is responsible for the observed  
31 mislocalization (Figure 7C). Indeed, the entire FHA domain RFP-tagged localized to  
32 mitotic structures similar to RFP-Chk2 (Figure 7D). Along these lines, we can conclude  
33 that the FHA domain is required for proper Chk2 localization to mitotic structures.  
34 Furthermore, we analyzed the effects of the several Chk2 mutants on lagging  
35 chromosomes. Interestingly, transfection of HuS0gen with Chk2 FHA domain  
36 significantly reduced the number of lagging chromosomes (Figure 7E). This result  
37 suggests a dominant negative effect of Chk2 FHA domain towards endogenous  
38 Chk2.  
39  
40  
41  
42  
43  
44  
45  
46  
47  
48  
49  
50  
51  
52  
53  
54

55  
56 **Rb phosphorylation contributes to defective mitoses in HuS cells.**  
57  
58  
59  
60

1  
2  
3 An important point raised by defective mitoses-related DNA damage as observed in this  
4 study is why the cells do not sense signals deployed to curb cell proliferation, as  
5 normally the growth of cultured diploid cells is halted by chromosome missegregation. In  
6 HCC, p53 deficiency has been described to participate in the development of CIN,  
7 however the relevance of p53 to HCC initiation, progression, or both, remains an area of  
8 active investigation [2]. Therefore, the basal level of p53 in HCT116, Huh7, HuS30gen  
9 and HuS0gen was investigated. As shown in Figure 8A, p53 was expressed in Huh7  
10 and at low level in HuS30gen cells. HuS0gen cells did not express p53 in basal  
11 conditions, however treatment of the cells with 5-fluorouracil, a DNA-damaging  
12 agent, triggered a strong p53 protein expression. Based on these findings we assume  
13 that p53 expression may be a late event in HuS cells, as a result of several  
14 defective mitoses [19]. Furthermore, mutated p53 was not present in HCT116 and  
15 HuS30gen cells in contrast to Huh7 cells that we used as a positive control (Figure 8B)  
16 [30].  
17

18  
19 The possible involvement of the retinoblastoma protein Rb was evaluated since several  
20 studies have described Rb as an important regulator of cell division [31]. Specifically,  
21 Rb phosphorylation determines Rb inactivation and leads to defective mitoses [31].  
22 Therefore, we evaluated the protein expression levels of phospho-Rb (Ser807/811) in  
23 HCT116, HuS0gen cells and HuS30gen. As shown in Figure 8C HuS30gen cells  
24 express higher levels of phospho-Rb (Ser807/811) in comparison to HuS0gen cells.  
25 Moreover, HCT116 (Figure 8D), HuS30gen (Figure 8E) and HuS0gen (Figure 8F)  
26 exhibited a localization of phospho-Rb (Ser807/811) at the chromosomal level. Taken  
27 together, these findings suggest that in HuS30gen Rb phosphorylation is required to  
28 sustain mitotic activity which leads to mitotic defects and DNA damage.  
29  
30  
31  
32  
33  
34  
35  
36  
37  
38  
39  
40  
41  
42  
43  
44  
45  
46  
47  
48  
49  
50  
51  
52  
53  
54  
55  
56  
57  
58  
59  
60



## Discussion

The neoplastic evolution of HCC proceeds through a multi-step histological process that is less well defined than that of other cancer types. Hyperplastic nodules of regenerating hepatocytes have normal karyotype and represent a potential first step towards HCC. These lesions can progress to dysplastic nodules, which have abnormal chromosome features including numerical and structural alterations. These dysplastic nodules can evolve to HCC marked with recurrent regions of copy number change and allelic imbalances [3, 4]. Loss of certain tumour suppressors or gain of specific oncogenes promote cell division as shown in many previous studies [25, 32]. We demonstrate that this coincides with defective mitoses which can cause DNA damage. This scenario is conceivable considering that massive deregulation of mitosis is incompatible with cell survival and can even be tumour suppressive [33]. Therefore, subtle rather than massive mitotic defects are expected to underlie CIN in HCC, allowing a tolerable level of chromosome defects. To support this view we have provided evidence in this study that hepatocarcinogenesis with lagging chromosomes elicits the expression of DNA damage response protein Chk2. Thus, the overexpression of Chk2 and its mislocalization within structures of the mitotic spindle contribute to sustain cell division and chromosomes missegregation [34-36]. This forms a self-perpetuating mechanism causing DNA damage (Figure 9).

We have also found that functional Rb inactivation is necessary but not sufficient to trigger chromosome missegregation. Indeed, phosphorylation of Rb deregulates transcription factor E2F, and well-characterized targets of E2F include multiple genes whose products are required to maintain cell division [37-39]. The integrity of chromosomal DNA is under constant surveillance throughout the cell division. Surprisingly, the fact that a deregulated functional Chk2 itself might cause *per se* CIN through abnormal spindle localization is intriguing, as the role of Chk2 in the maintenance of genetic stability has mainly been ascribed to its function in DNA damage checkpoint signalling.

When DNA damage occurs, Chk2 is first activated in the nucleus during interphase, spreads to the cytoplasm and localizes to the various mitotic structures because of the

1  
2  
3 phosphopeptide-binding ability of the FHA domain [40]. During DNA damage,  
4 chromosomes accumulate a number of phosphoproteins around DNA damage sites  
5 [41]. Chk2 may bind to specific phosphoproteins through the FHA domain forming  
6 numerous chromosomal foci and trap Chk2 to the structures. When this FHA domain is  
7 deleted, the molecule is excluded from the mitotic chromosomes and therefore does not  
8 mislocalize to kinetochores, spindle poles and midbody as was demonstrated in Figure  
9 7. Moreover, Chk2 localization to the kinetochores and midbody region suggests that  
10 Chk2 may directly affect spindle assembly function, similar to Aurora B kinase [42], but  
11 only when DNA damage exists. The data obtained in this study fit a model whereby  
12 abnormal expression of Chk2 and Aurora B kinase disrupts the sensitive balance of  
13 mitotic proteins, which in turn undermines faithful chromosome segregation [34]. If the  
14 relative expression levels of the proteins involved in the quality control of the machinery  
15 which ensures chromosome segregation fidelity is disrupted by mitotic errors and DNA  
16 damage, the resulting imbalance could further compromise chromosome segregation  
17 accuracy.  
18  
19

20  
21 Since Chk2 overexpression can induce oligomerization and cis- and trans  
22 phosphorylation of regulatory residues [43, 44], one possibility is that local enrichment  
23 of Chk2 at kinetochores and midbody regions facilitates Chk2 oligomerization and  
24 activation. This mechanism may alter regulation of Chk2-dependent processes such as  
25 centrosome function, cell cycle progression, and chromosome segregation. The  
26 discovery of a role for Chk2 in HCC, its association with DNA damage and CIN may  
27 have potential diagnostic and prognostic significance. Importantly, grading  
28 heterogeneity inside a tumour is frequently observed and may significantly limit  
29 diagnosis and choice of treatment. This study suggests that stratification of HCC  
30 patients according to CIN status and/or DNA damage may be useful to minimize the  
31 confounding effects of tumor CIN status in clinical trials. Along these lines, we propose  
32 that the diagnostic and prognostic value of Chk2 should be further verified in  
33 prospective clinical trials.  
34  
35  
36  
37  
38  
39  
40  
41  
42  
43  
44  
45  
46  
47  
48  
49  
50  
51  
52  
53  
54  
55  
56  
57  
58  
59  
60

1  
2  
3  
4  
5  
6  
7  
8  
9  
10  
11  
12  
13  
14  
15  
16  
17  
18  
19  
20  
21  
22  
23  
24  
25  
26  
27  
28  
29  
30  
31  
32  
33  
34  
35  
36  
37  
38  
39  
40  
41  
42  
43  
44  
45  
46  
47  
48  
49  
50  
51  
52  
53  
54  
55  
56  
57  
58  
59  
60

**Competing interests:** The authors have declared that no conflict of interest exists.

**Contributors:** V.C. study concept and experimental design, cloning experiments, analysis and interpretation of data, drafting of the manuscript, study supervision; M.L. immunoblotting and karyotype experiments; S.M. immunohistochemistry and animal experiments; T.M. immunofluorescence, live-cell, bioinformatics analysis; A.H. immunohistochemistry analysis; TV.L. human tissue evaluation; M.P. critical review of the manuscript; K.R. experimental design, data analysis, critical review of the manuscript; A.G conceptual and intellectual input, critical review of the manuscript. All authors read and approved the final manuscript.

**Funding:** This study was in part supported by the University of Florence and Regione Toscana “Ricerca regionale in materia di salute D.D. n. 3242 ”, and by Ministero dell’Istruzione, dell’Università FIRB RBAP10MY35\_002 and FiorGen Foundation.

## References

- [1] McGlynn KA, Petrick JL, London WT. Global epidemiology of hepatocellular carcinoma: an emphasis on demographic and regional variability. *Clin Liver Dis* 2015;19:223-238
- [2] Farazi PA, DePinho RA. Hepatocellular carcinoma pathogenesis: from genes to environment. *Nat Rev Cancer*. 2006;6:674-87.
- [3] Carloni V, Luong T V, Rombouts K. Hepatic stellate cells and extracellular matrix in hepatocellular carcinoma: more complicated than ever. *Liver Int*. 2014;34:834-843.
- [4] Mazzocca A, Liotta F, Carloni V. Tetraspanin CD81-regulated cell motility plays a critical role in intrahepatic metastasis of hepatocellular carcinoma. *Gastroenterology* 2008; 135:244-256
- [5] Sakakura C, Hagiwara A, Taniguchi H, et al. Chromosomal aberrations in human hepatocellular carcinomas associated with hepatitis C virus infection detected by comparative genomic hybridization. *Br. J. Cancer* 1999;80: 2034–2039.
- [6] Wong N, Lai P, Pang E, et al. A comprehensive karyotypic study on human hepatocellular carcinoma by spectral karyotyping. *Hepatology* 2000;32: 1060–1068.
- [7] Kusano N, Shiraishi K, Kubo K, et al. Genetic aberrations detected by comparative genomic hybridization in hepatocellular carcinomas: their relationship to clinic pathological features. *Hepatology*.1999;29:1858-62
- [8] Shimojima M, Komine F, Hisatomi H, et al. Detection of telomerase activity, telomerase RNA component, and telomerase reverse transcriptase in human hepatocellular carcinoma. *Hepatol. Res*. 2004; 29: 31–38.
- [9] Youssef N, Paradis V, Ferlicot S, et al. In situ detection of telomerase enzymatic activity in human hepatocellular carcinogenesis. *J. Pathol*. 2001;194: 459–465.
- [10] Kawai, H. Suda T, Aoyagi Y, et al. Quantitative evaluation of genomic instability as a possible predictor for development of hepatocellular carcinoma: comparison of loss of heterozygosity and replication error. *Hepatology* 2000; 31: 1246–1250.
- [11] Guan XY, Fang Y, Sham JS, et al. Recurrent chromosome alterations in hepatocellular carcinoma detected by comparative genomic hybridization. *Genes Chromosomes Cancer* 2000; 29:110–116.

- 1  
2  
3 [12] Wilkens L, Flemming P, Gebel M, et al. Induction of aneuploidy by increasing  
4 chromosomal instability during dedifferentiation of hepatocellular carcinoma. Proc. Natl  
5 Acad. Sci. USA. 2004;101: 1309–1314  
6  
7  
8 [13] Almendro V, Marusyk A, Polyak K. Cellular heterogeneity and molecular evolution  
9 in cancer. Annu Rev Pathol. 2013;8:277-302.  
10  
11 [14] Bakhoum F S, Compton A D. Chromosomal instability and cancer: a complex  
12 relationship with therapeutic potential. J Clin Invest. 2012;122:1138–1143  
13  
14 [15] Carloni V, Mazzocca A, Mello T, et al. Cell fusion promotes chemoresistance in  
15 metastatic colon carcinoma. Oncogene. 2013; 32: 2649–266  
16  
17 [16] Carloni V, Vizzutti F, Pantaleo P. Farnesyltransferase inhibitor ABT-100 is a potent  
18 liver cancer chemopreventive agent. Clin Cancer Research. 2005; 11: 4266-4274.  
19  
20 [17] Basak R, Saha BK, Chatterjee M. Inhibition of diethylnitrosamine-induced rat liver  
21 chromosomal aberrations and DNA-strand breaks by synergistic supplementation of  
22 vanadium and 1 $\alpha$ ,25-dihydroxyvitamin D<sub>3</sub>. Biochim Biophys Acta. 2000;1502:273-282  
23  
24 [18] Rogakou EP, Pilch DR, Orr AH, et al. DNA double-stranded breaks induce histone  
25 H2AX phosphorylation on serine 139. J Biol Chem. 1998;273:5858-68  
26  
27 [19] Thompson SL, Compton DA. Proliferation of aneuploid human cells is limited by  
28 a p53-dependent mechanism. J Cell Biol. 2010; 188:369-381  
29  
30 [20] Stolz A, Ertych N, Kienitz A, et al. The CHK2- BRCA1 tumour suppressor pathway  
31 ensures chromosomal stability in human somatic cells. Nat Cell Biol. 2010 ;12:492-499.  
32  
33 [21] Durantel D, Zoulim F. Going towards more relevant cell culture models to study the  
34 *in vitro* replication of serum-derived hepatitis C virus and virus/host cell interactions J  
35 Hepatol 2007; 46:1–5  
36  
37 [22 ] Hayward DG, Fry AM. Nek2 kinase in chromosome instability and cancer. Cancer  
38 Lett. 2006;237:155-166.  
39  
40 [23] Cai Z, Chehab NH, Pavletich NP. Structure and activation mechanism of the CHK2  
41 DNA damage checkpoint kinase. Mol Cell. 2009;35:818-29  
42  
43 [24] Ward IM, Wu X, Chen J. Threonine 68 of Chk2 is phosphorylated at sites of DNA  
44 strand breaks. J Biol Chem. 2001;276:47755-8  
45  
46  
47  
48  
49  
50  
51  
52  
53  
54  
55  
56  
57  
58  
59  
60

- 1  
2  
3 [25] Janssen A, van der Burg M, Szuhai K, et al. Chromosome segregation errors as a  
4 cause of DNA damage and structural chromosome aberrations. *Science*.  
5 2011;333:1895-1898  
6  
7  
8 [26] Adams RR, Carmena M, Earnshaw WC. Chromosomal passengers and the  
9 (aurora) ABCs of mitosis. *Trends Cell Biol* 2001; 11: 49–54.  
10  
11 [27] Hayashi-Takanaka Y, Yamagata K, Nozaki N, et al. Visualizing histone  
12 modifications in living cells: spatio-temporal dynamics of H3 phosphorylation during  
13 interphase. *J Cell Biol*. 2009; 187:781-790  
14  
15 [28] Crosio C, Fimia GM, Loury R, et al. Mitotic phosphorylation of histone H3: spatio-  
16 temporal regulation by mammalian Aurora kinases *Mol Cell Biol*. 2002;22:874-85  
17  
18 [29] Ladstein RG, Bachmann IM, Straume O, et al. Prognostic importance of the mitotic  
19 marker phospho-histone H3 in cutaneous nodular melanoma. *J Invest Dermatol*.  
20 2012;132:1247-1252.  
21  
22 [30] Mazzocca A, Giusti S, Hamilton AD, et al. Growth inhibition by the  
23 farnesyltransferase inhibitor FTI-277 involves Bcl-2 expression and defective  
24 association with Raf-1 in liver cancer cell lines. *Mol Pharmacol*. 2003;63:159-166  
25  
26 [31] Manning AL, Dyson NJ. pRB, a tumor suppressor with a stabilizing presence.  
27 *Trends Cell Biol*. 2011;21:433-41  
28  
29 [32] Baker DJ, Jin F, Jeganathan KB, et al. Whole chromosome instability caused by  
30 Bub1 insufficiency drives tumorigenesis through tumor suppressor gene loss of  
31 heterozygosity. *Cancer Cell*. 2009;16:475–486.  
32  
33 [33] Weaver BA, Silk AD, Montagna C, et al. Aneuploidy acts both oncogenically and as  
34 a tumor suppressor. *Cancer Cell*. 2007; 11:25–36.  
35  
36 [34] Lin ZZ, Jeng YM, Hu FC, et al. Significance of Aurora B overexpression in  
37 hepatocellular carcinoma. *Aurora B overexpression in HCC. BMC Cancer*. 2010;10:461  
38  
39 [35] Tanaka S, Aii S, Yasen M, et al. Aurora kinase B is a predictive factor for the  
40 aggressive recurrence of hepatocellular carcinoma after curative hepatectomy. *Br J*  
41 *Surg*. 2008; 95: 611–619  
42  
43 [36] Lu G, Shan T, He S, et al. Overexpression of CENP-H as a novel prognostic  
44 biomarker for human hepatocellular carcinoma progression and patient survival. *Oncol*  
45 *Rep*. 2013;30:2238-44.  
46  
47  
48  
49  
50  
51  
52  
53  
54  
55  
56  
57  
58  
59  
60

- 1  
2  
3 [37] Burkhardt DL, Sage J. Cellular mechanisms of tumour suppression by the  
4 retinoblastoma gene. *Nat Rev Cancer*.2008;8:671-82  
5  
6 [38] Genovese C,Trani D, Caputi M, et al. Cell cycle control and beyond: emerging  
7 roles for the retinoblastoma gene family. *Oncogene*. 2006;25:5201-9.  
8  
9 [39] van Harn T, Foijer F, van Vugt M, et al. Loss of Rb proteins causes genomic  
10 instability in the absence of mitogenic signaling. *Genes Dev*. 2010;24:1377-88  
11  
12 [40] Takeda S, Collins ER, Kurahashi K. The FHA domain determines *Drosophila*  
13 Chk2/Mnk localization to key mitotic structures and is essential for early embryonic DNA  
14 damage responses. *Mol Biol Cell*. 2015 ;26:1811-1828.  
15  
16 [41] Polo SE, Jackson SP. Dynamics of DNA damage response proteins at DNA  
17 breaks: a focus on protein modifications. *Genes Dev* 2011;25: 409–433.  
18  
19 [42] Fuller BG, Lampson MA, Foley EA, et al. Midzone activation of aurora B in  
20 anaphase produces an intracellular phosphorylation gradient. *Nature*. 2008; 453:1132-  
21 1136  
22  
23 [43] Schwarz JK, Lovly CM, Piwnica-Worms H. Regulation of the Chk2 protein kinase  
24 by oligomerization-mediated cis- and trans-phosphorylation. *Mol. Cancer Res*. 2003;1:  
25 598–609.  
26  
27 [44] Li J, Williams BL, Haire LF, et al. Structural and functional versatility of the FHA  
28 domain in DNA-damage signaling by the tumor suppressor kinase Chk2. *Mol Cell*.  
29 2002;9:1045-54.  
30  
31  
32  
33  
34  
35  
36  
37  
38  
39  
40  
41  
42  
43  
44  
45  
46  
47  
48  
49  
50  
51  
52  
53  
54  
55  
56  
57  
58  
59  
60

## Figure legends

**Figure 1. Immunohistochemical detection of Chk2 and phospho-Histone H2A.X(Ser139) in diethylnitrosamine-induced HCC.** **A)** Representative image of livers of female Wistar rats used as control (left panel) and rats HCC (right panel) which were given diethylnitrosamine 50 mg/L *ad libitum* in their drinking water for a period of 10 weeks. Scale bar, 10mm. **B)** Liver sections (HCC 14 weeks) were analyzed for Chk2 and phospho-Histone H2A.X(Ser139) expression (see nuclear staining in the right panels, Scale bar 200µm.). **C)** and **D)** Five animals for each time point were sacrificed on week 4, 6, 8, 10, 14. Chk2 and phospho-Histone H2A.X(Ser139) expression were determined according to H-score method. The average positive percentage was calculated, and a H-score between 0 and 300 was obtained where 300 was equal to 100% of tumour cells stained brown strongly. The positive cut off was considered  $\geq 100$ . The levels of Chk2 and phospho-Histone H2A.X(Ser139) expression are indicated as fold increase of cut-off values.\*  $P < 0.001$  vs 8 weeks. Chk2 expression was evaluated in the nucleus of the HCC tissue as indicated by the brown staining.

**Figure 2a. Detection of Chk2 protein in human HCC by immunohistochemistry.** Paraffin-embedded tissue sections were stained with a specific antibody for Chk2 and hematoxylin and eosin. **A)** Normal liver with a moderate, diffuse cytoplasmic Chk2 staining. **B)** Chk2 immunoreactivity in cancer tissue from a tumour classified Grade 1 characterized by a weak focal cytoplasmic Chk2 staining. **C)** and **D)** Chk2 immunoreactivity in cancer tissue from a tumour classified Grade 2 with a strong Chk2 perinuclear and moderate nuclear accumulation. **E)** Chk2 immunoreactivity in cancer tissue from a tumour classified Grade 3 with a clear and strong nuclear staining, without cytoplasmic and perinuclear Chk2 staining. Scale bar 100µm.

## Figure 2b. CHK2 Expression in HCC subtypes from TCGA database.

CHK2 expression from RNA-seq data was retrieved for 101 patients with TP53 mutations and 85 patients with CTNNB1/beta-catenin mutations, using the LIHC cohort of 377 cases (accessed on November 16, 2016). Patients with both TP53 and CTNNB1



1  
2  
3 mutations were excluded from the analysis. Expression levels are expressed as log<sub>2</sub>exp  
4 (absolute levels) or z-score (expression levels in HCC samples normalized to the  
5 expression levels in the reference population). Graph shows mean ± SEM, \*p<0.0001  
6  
7  
8  
9

10  
11  
12 **Figure 3. Defective chromosome segregation causes Chk2 overexpression in**  
13 **hTERT immortalized human hepatocytes. A)** Examples of chromosome numbers  
14 from metaphase spreads of HCT116, Huh7 and HuS0gen cells (*upper panels*). In the  
15 *bottom panels* individual chromosome numbers percentage from metaphase spreads of  
16 HCT116, Huh7 and HuS0gen cells are represented (n=20). **B)** Representative  
17 immunoblot out of three independent experiments demonstrating the protein levels of  
18 Chk2 in indefinite cultured HCT116 and Huh7 cells, in HuS0gen cells and HuS0gen  
19 cells after 30 generations in culture (HuS30gen). **C)** Example of chromosomes from  
20 metaphase spreads of HuS30gen exhibiting numerical and structural (red arrow)  
21 alterations; the histogram shows individual chromosome numbers percentage in  
22 HuS30gen (n=20). **D)** Representative immunoblot out of three independent experiments  
23 demonstrating the protein levels of phospho-Histone H2A.X (Ser139), a hallmark of  
24 DNA damage, in indefinite cultured HCT116, Huh7, HuS0gen and HuS30gen cells.  
25  
26  
27  
28  
29  
30  
31  
32  
33  
34  
35  
36

37 **Figure 4. Chk2 overexpression is linked to lagging chromosomes. A)** Chk2 co-  
38 localizes with chromosomal structures only in HuS30gen cells. Asynchronously growing  
39 HCT116, Huh7, HuS0gen and HuS30gen cells were synchronized in metaphase by  
40 releasing cells from thymidine treatment into MG132. Metaphase mitotic spindles  
41 were monitored by immunofluorescence and typical examples are given, endogenous  
42 Chk2 (red); kinetochores, CENP-H (green); chromosomes are stained with Hoechst  
43 33342 (blue). Chk2 co-localization with chromosome structures was quantified in  
44 metaphases (mean±SD; n≥ 300 metaphases) **B)** HuS0gen that express low levels of  
45 protein Chk2 were stably transfected with HA-tagged Chk2 and asynchronously  
46 growing cells were evaluated for lagging chromosomes; typical examples of lagging  
47 chromosomes containing anaphase and telophase are given (HA-Chk2, red; CENP-H,  
48 green; chromosomes, Hoechst 33342, blue). **C)** Asynchronously growing HuS30gen  
49  
50  
51  
52  
53  
54  
55  
56  
57  
58  
59  
60

1  
2  
3 cells expressing H2B-GFP (to visualize in vivo lagging chromosomes) were analyzed  
4 by live cell microscopy. Left, phase-contrast images; middle, fluorescence images; right,  
5 merge. Scale bar, 10  $\mu$ m. **D**) Asynchronously growing cells, HCT116, Huh7, HuS0gen,  
6 HuS30gen, and HuS0gen stably transfected with HA-tagged Chk2 (HuS-Chk2) were  
7 stained with CENP-H (constitutive component of kinetochores) and Hoechst 33342  
8 (chromosomes). Anaphase and telophase lagging chromosomes were counted by  
9 immunofluorescence, (mean  $\pm$  SD; n= 500 cells) \*p<0.01 vs HuS0gen. \*\*p<0.05 vs  
10 HuS-mock  
11  
12  
13  
14  
15  
16  
17  
18  
19

**Figure 5. Overexpressed/phosphorylated Chk2 is correlated with increased chromosomal missegregation.** **A**) HuS30gen cells were stably retrovirally-transduced either with a control shRNA (shCTL) or shRNAs targeting CHK2 (shChk2). Chk2-depleted HuS30gen cells were used to reconstitute expression of CHK2 by introducing a shRNA resistant mutant of CHK2 (myc-Chk2resist). The protein levels were determined by immunoblotting and a representative example is shown. **B**) Asynchronously growing cells HuS30-shCTL, HuS30-shChk2 and Chk2-depleted HuS30gen reconstituted with shRNA resistant mutant of CHK2 were stained with CENP-H (kinetochores) and Hoechst 33342 (chromosomes). Anaphase and telophase lagging chromosomes counted by immunofluorescence, (mean  $\pm$  SD; n= 500 cells), \*p < 0.01vs controls. **C**) The mitotic index of asynchronously growing cells HuS30-shCTL, HuS30- shChk2 and Chk2-depleted HuS30 reconstituted with shRNA resistant mutant of CHK2 was measured by counting the mitotic figures (prophase, metaphase, anaphase, and telophase) positively stained for phosphorylated histone H3 (pHH3).The mitotic index was calculated as percentage of mitotic cells/total cells as described in Materials and Methods. Error bars show the SD from the means of three independent experiments, \*p<0.01vs controls. **D**) Chk2 phosphorylation levels on Thr68 and Thr387. Representative immunoblot out of three showing asynchronously growing HCT116, HuS0gen, HuS30gen, and HuS0gen stably transfected with Chk2 (HuS-Chk2). Cell lysates were immunoblotted against p-Thr68-Chk2 and p-Thr387-Chk2. **E**) Activated Chk2 localizes with mitotic structures in HuS30gen cells. Example of metaphase, anaphase and telophase from unstable HuS30gen cells and stable HCC cell line,  
20  
21  
22  
23  
24  
25  
26  
27  
28  
29  
30  
31  
32  
33  
34  
35  
36  
37  
38  
39  
40  
41  
42  
43  
44  
45  
46  
47  
48  
49  
50  
51  
52  
53  
54  
55  
56  
57  
58  
59  
60

1  
2  
3 Huh7. Activated Chk2 (p-Thr68-Chk2, red) co-localizes with CENP-H, constitutive  
4 component of kinetochores (green) only in HuS30gen. Arrowheads indicate lagging  
5 chromosomes, (Hoechst 33342, blue). Scale bar, 10  $\mu$ m.  
6  
7  
8

9  
10 **Figure 6. Up-regulated Chk2 cooperates with Aurora B for chromosome**  
11 **condensation and cytokinesis**  
12

13  
14 **A)** HuS0gen cells showing expression and localization of endogenous Chk2 (red),  
15 Aurora B kinase (green), and chromosomes (Hoechst 33342, blue) **B)** Co-localization of  
16 Aurora B kinase (green) with HuS0gen overexpressing HA-tagged Chk2 (red) in  
17 mitoses with lagging chromosomes (Hoechst 33342, blue). Cells were fixed and  
18 analyzed by fluorescence microscopy. Arrows indicate spindle midzone region,  
19 arrowheads indicate midbody region. **C)** HuS0gen cells overexpressing HA-tagged  
20 Chk2 were stained with antibody anti-HA (red) and phospho-Histone H3 (green) to show  
21 co-localization of Chk2 with missegregating chromosomes. Scale bar, 10  $\mu$ m.  
22  
23  
24  
25  
26  
27  
28  
29  
30  
31

32 **Figure 7. FHA domain is essential for Chk2 localization and contributes to**  
33 **sustain lagging chromosomes.** Red fluorescent protein was conjugated at the N-  
34 terminus of each Chk2 mutant. Left, schematic diagrams. RFP was omitted. RFP-Chk2  
35 mutants were transfected in HuS30gen cells, synchronized and blocked in metaphase  
36 by treatment with MG132 for 2 hours, the cells were analyzed by fluorescence  
37 microscopy. **A)** Expression and subcellular localization of RFP-Chk2. RFP-Chk2  
38 decorates the spindle poles (two red dots), and localizes with kinetochores (CENP-H,  
39 green), chromosomes are stained with Hoechst 33342, blue. **B)** RFP-Chk2D347A,  
40 kinase dead mutant (KD), localizes similarly to RFP-Chk2. **C)** RFP-Chk2 $\Delta$ FHA does not  
41 localize to mitotic structures. **D)** RFP-FHA localizes to spindle poles, kinetochores. FHA  
42 domain tagged with RFP is similar to RFP-Chk2. Scale bar, 10  $\mu$ m. **E)** Quantification of  
43 lagging chromosomes during anaphases and telophases in HuS0gen cells stably  
44 expressing Chk2(KD), Chk2 $\Delta$ FHA and Chk2FHA mutants. Chk2 FHA mutant  
45 significantly reduces the number of lagging chromosomes as a result of the dominant  
46  
47  
48  
49  
50  
51  
52  
53  
54  
55  
56  
57  
58  
59  
60

1  
2  
3 negative effect towards endogenous Chk2. mean±SD; n=400 anaphases and  
4 telophases. \*p<0.01vs control  
5  
6  
7

8  
9 **Figure 8. P53 and phosphorylated Rb expression in HCT116, HuS30gen and**  
10 **HuS0gen. A)** Representative immunoblot out of three showing the protein levels of p53  
11 in HCT116, Huh7, HuS30gen and HuS0gen cells. In the same blot are represented p53  
12 expression levels of HuS0gen cells after treatment with DNA-damaging agent 5-  
13 fluorouracil (5-FU, 1µM). **B)** Representative images of HCT116, Huh7 and HuS30gen  
14 cells fixed and stained with an antibody directed against the mutated codon TGT at  
15 position 220 of p53 protein. Huh7 cells, previously characterized as p53 mutated  
16 (see reference 30), are used as positive control. **C)** Representative immunoblot out of  
17 three independent experiments showing the protein levels of Rb and phosphorylated  
18 Rb, p-Rb (Ser807/811), in HCT116, HuS30gen and HuS0gen cells. **D), E) and F)**  
19 Mitoses of asynchronously growing HCT116, HuS30gen and HuS0gen cells stained  
20 with the antibody specific for phosphorylated Rb and analyzed by fluorescence  
21 microscopy; p-Rb (Ser807/811) red; chromosomes (Hoescht 33342, blue). Scale bar,  
22 10 µm.  
23  
24  
25  
26  
27  
28  
29  
30  
31  
32  
33

34  
35 **Figure 9.** A proposed schema illustrating the mechanism by which Chk2  
36 overexpression and mislocalization sustains defective mitoses throughout hepatic  
37 tumorigenesis. Mitotic errors represented by lagging chromosomes cause DNA  
38 damage and overexpress Chk2 in genetically unstable cells. Chk2 and  
39 phosphorylated forms of Chk2 mislocalize within the mitotic structures in the presence  
40 of DNA damage contributing to increase the numbers of lagging chromosomes.  
41  
42  
43  
44  
45  
46  
47  
48  
49  
50  
51  
52  
53  
54  
55  
56  
57  
58  
59  
60

1  
2  
3  
4  
5  
6  
7  
8  
9  
10  
11  
12  
13  
14  
15  
16  
17  
18  
19  
20  
21  
22  
23  
24  
25  
26  
27  
28  
29  
30  
31  
32  
33  
34  
35  
36  
37  
38  
39  
40  
41  
42  
43  
44  
45  
46  
47  
48  
49  
50  
51  
52  
53  
54  
55  
56  
57  
58  
59  
60

## CHK2 Overexpression and Mislocalization within Mitotic Structures Enhances Chromosomal Instability and Hepatocellular Carcinoma Progression

Vinicio Carloni<sup>1</sup>, Matteo Lulli<sup>2</sup>, Stefania Madiati<sup>1</sup>, Tommaso Mello<sup>3</sup>, Andrew Hall<sup>4</sup>, Tu Vinh Luong<sup>4</sup>, Massimo Pinzani<sup>1,5</sup>, Krista Rombouts<sup>1,5\*</sup> and Andrea Galli<sup>3\*</sup>

<sup>1</sup>Department of Experimental and Clinical Medicine, <sup>2</sup>Department of Experimental and Clinical Biomedical Science, General Pathology Unit, <sup>3</sup>Department of Experimental and Clinical Biochemical Sciences, Gastroenterology Unit, University of Florence, Florence, Italy, <sup>4</sup>Royal Free Hospital, Department of Cellular Pathology, London, UK, <sup>5</sup>University of London (UCL) Institute for Liver & Digestive Health, London, United Kingdom  
MP and KR have relocated to the University of London, London, UK

\* These authors contributed equally.

**Correspondence should be addressed to:** Vinicio Carloni MD., PhD, Department of Experimental and Clinical Medicine. University of Florence, Largo Brambilla 3, 50134, Florence, Italy. Phone: +39-55-2758091; Fax: +39-55-7947104; E-mail: [vinicio.carloni@unifi.it](mailto:vinicio.carloni@unifi.it)

**Key words:** DNA damage response proteins, DNA double-strand breaks, genomic instability, defective chromosome segregation, DNA damage

**Abbreviations list:** CIN, chromosomal instability; Chk2, checkpoint kinase 2; FHA, forkhead-associated domain; SCD, SQ/TQ cluster domain; hTERT, human telomerase reverse transcriptase; Nek2, NIMA related kinase 2; CENP-H, centromere protein H; pHH3, phospho-Histone H3; Rb, retinoblastoma protein; HA, hemagglutinin; RFP, red fluorescent protein.

**Count Words: 3938**

## Significance of this study

What is already known on this subject?

- Chromosomal instability (CIN), is a major hallmark of hepatic tumorigenesis and hampers prognosis and therapy. The underlying mechanisms are not well characterized.
- CIN is regarded as an ongoing elevated frequency of mitotic errors that leads to numerical and structural chromosome aberrations in a significant proportion of cell divisions leading to intra-tumoral heterogeneity and drug resistance.
- DNA damage caused by genotoxic agents activates DNA damage response checkpoint kinase 2 (Chk2) protein expression
- Mislocalization of proteins, including oncoproteins, tumor suppressors, and other cancer-related proteins, can interfere with normal cellular function and cooperatively drive tumor development

What are the new findings?

- Mitotic errors represented by lagging chromosomes cause DNA damage and overexpress Chk2 throughout hepatic tumorigenesis
- Chk2 and the activation/phosphorylated forms of Chk2 mislocalize within the mitotic structures in the presence of DNA damage contributing to increased numbers of cells with lagging chromosomes. In contrast, knockdown of Chk2 reduces the number of cells with lagging chromosomes and the mitotic index
- The Chk2 forkhead-associated domain (FHA) is responsible for the mislocalization of the protein at the mitotic structures
- Chk2 is expressed at the nuclear level in a subset of human HCC and this aspect correlates with HCC progression. Moreover, CHK2 expression is significantly higher in HCC patients with mutated TP53, a hallmark of genomic instability, than in those with mutated CTNNB1/beta-catenin.

How might it impact on clinical practice in the foreseeable future?

- The study reveals a new mechanistic insight in the co-involvement of Chk2 in CIN i.e. Chk2 mislocalization, hence indicating the possibility to use Chk2 as a new drug target in HCC

- The findings of this study suggest Chk2 as a putative biomarker that can be used to detect DNA damage and chromosomal instability in HCC providing a valuable support, not only for prognosis, but also for identifying patients who are likely to have a response to therapy.

Confidential: For Review Only

## ABSTRACT

### Objective

Chromosomal instability (CIN) is the most common form of genomic instability, that promotes hepatocellular carcinoma (HCC) progression by enhancing tumour heterogeneity, drug resistance and immunity escape. CIN *per se* is an important factor of DNA damage, sustaining structural chromosome abnormalities but the underlying mechanisms are unknown.

### Design

DNA-damage response protein Chk2 expression was evaluated in an animal model of diethylnitrosamine-induced HCC characterized by DNA damage and elevated mitotic errors. Chk2 was also determined in two discrete cohorts of human HCC specimens. To assess the functional role of Chk2, gain on- and loss-of-function, mutagenesis, karyotyping, and immunofluorescence/live imaging were performed by using HCT116, Huh7 and human hepatocytes immortalized with hTERT gene (HuS).

### Results

We demonstrate that mitotic errors during HCC tumorigenesis cause lagging chromosomes/DNA damage and activation of Chk2. Overexpression/phosphorylation and mislocalization within the mitotic spindle of Chk2 contributes to induce lagging chromosomes. Lagging chromosomes and mitotic activity are reversed by knockdown of Chk2. Furthermore, up-regulated Chk2 maintains mitotic activity interacting with Aurora B kinase for chromosome condensation and cytokinesis. The forkhead-associated (FHA) domain of Chk2 is required for Chk2 mislocalization to mitotic structures. In addition, retinoblastoma protein phosphorylation contributes to defective mitoses. A cohort and independent validation cohort show a strong cytoplasm-to nuclear Chk2 translocation in a subset of HCC patients.

### Conclusions

The study reveals a new mechanistic insight in the co-involvement of Chk2 in HCC progression. These findings propose Chk2 as a putative biomarker to detect CIN in HCC providing a valuable support for clinical/therapeutical management of patients.



## Introduction

Hepatocellular carcinoma (HCC) is the primary malignancy of hepatocytes and the most frequent solid tumour of the liver. Half a million cases occur annually and the World Health Organization has recently ranked HCC as the second most lethal cancer worldwide [1]. Different etiological factors such as hepatitis B and C virus, alcohol and diabetes cause liver injury followed by inflammation, necrosis and hepatocytes proliferation [2]. Continuous cycles of this destructive–regenerative process culminates in liver cirrhosis which is characterized by regenerating nodules that progress to dysplastic nodules and ultimately HCC [3,4]. More than 90% of HCC, including dysplastic nodules in cirrhotic liver, possess chromosomal aberrations suggesting that chromosomal defects occur at early stages of tumour development and several attempts have been made to connect different chromosomal aberration patterns as specific subsets of HCC, albeit with limited success [5-7]. A common feature of human HCC and dysplastic nodules is represented by chromosomal instability (CIN). Various types of chromosomal aberrations, including numerical (aneuploidy) and structural (e.g., translocations, deletions), are found in HCC and are linked to tumorigenesis [8,9]. An important aspect in studying HCC tumorigenesis is to distinguish between the state of the karyotype, and the rate of karyotypic change. In fact, aneuploidy is not synonymous with CIN, because aneuploid tumours are stable with uniform karyotype and phenotype [10-12]. Conversely, there is an increased rate of CIN generating diverse karyotypes within the same tumour. This yields a heterogeneous tumour cell population that has the ability to undergo selective evolution in term of drug resistance and immune system escape mechanisms [13-15]. CIN is regarded as an ongoing elevated frequency of mitotic errors that leads to additional chromosome gains or losses in a significant proportion of cell divisions. Our hypothesis is that CIN *per se* is also an important mechanism of DNA damage inducing structural chromosome aberrations in HCC. To verify this hypothesis we utilized checkpoint kinase 2 (Chk2) as a central effector of the cell response to DNA damage. In fact, Chk2 has been described to detect a variety of DNA lesions caused by exogenous and endogenous genotoxic agents. Our aim is to investigate the expression of this kinase in hepatic carcinogenesis and its correlation with the genesis of structural chromosomal

1  
2  
3 aberrations. Here, we provide evidence that defective chromosome segregation i.e.  
4 lagging chromosomes causes DNA damage and determines an  
5 overexpression/phosphorylation of Chk2. Furthermore, the mislocalization of Chk2  
6 with components of the mitotic spindle contributes to chromosome missegregations  
7 and DNA damage. These data are corroborated with the observation of an increased  
8 Chk2 and nuclear translocation in two independent cohorts of human HCC specimens.  
9  
10  
11  
12  
13  
14  
15  
16  
17  
18  
19  
20  
21  
22  
23  
24  
25  
26  
27  
28  
29  
30  
31  
32  
33  
34  
35  
36  
37  
38  
39  
40  
41  
42  
43  
44  
45  
46  
47  
48  
49  
50  
51  
52  
53  
54  
55  
56  
57  
58  
59  
60

## Materials and Methods

Please refer to the Supplementary Materials and Methods for more detailed descriptions.

### Tissue Samples and Immunohistochemistry Assays.

*Florence cohort, University Hospital of Florence;* formalin-fixed, paraffin-embedded tissue were obtained from an archive of liver biopsies of patients diagnosed with HCC. H&E-stained tissue sections of 49 patients were reviewed, and areas of cirrhotic and HCC were identified. Chk2 antigen retrieval was performed by heating in citrate buffer pH 6.0 at 98°C for 30 minutes. Non-specific signal was eliminated by peroxidase block for 10 minutes at RT. Primary antibody was incubated at room temperature overnight in a humidified chamber followed by HRP-conjugated secondary antibody incubation for 30 minutes at room temperature. Antibody binding was revealed by DAB and reaction was stopped by immersion of tissue sections in distilled water once brown colour appeared. Tissue sections were counterstained by hematoxylin, dehydrated in graded ethanols and mounted. All reagents for immunohistochemistry were from Dako. Appropriate positive and negative controls were included for each run of immunohistochemistry. Chk2 expression was determined according to H-score method. For H-score assessment, 10 fields were chosen at random at x400 magnification and the staining intensity in the malignant cell nuclei was scored as 0, 1, 2, and 3 corresponding to the presence of negative, weak, intermediate, and strong brown staining, respectively. The total number of cells in each field and the number of cells stained at each intensity were counted. The average percentage positive was calculated, and a H-score between 0 and 300 was obtained where 300 was equal to 100% of tumor cells stained brown strongly. The positive cut off was considered  $\geq 100$  (supplemental Figure S1). Chk2 expression in biopsy sections was scored by a pathologist and two researchers independently.

*London cohort, Royal Free Hospital;* formalin-fixed, paraffin-embedded surgical specimens from consecutive patients diagnosed with HCC were retrieved from Royal Free Hospital archives. All samples were stained with H&E and the sections were

1  
2  
3 reviewed and suitable areas of cirrhosis and HCC were identified in 20 samples.  
4 Antigen retrieval was performed by microwaving (720W) in pH 6.0 sodium citrate buffer  
5 for 30 mins. Endogenous peroxidase and non-specific binding of primary antibody was  
6 blocked. The primary Chk2 antibody was incubated at overnight at 5°C. Primary  
7 antibody detection was carried out using the Novolink polymer detection system  
8 (Novocastra). Tissue sections were counterstained with Mayer's hematoxylin.  
9  
10  
11  
12  
13  
14

15  
16 **Experimental hepatocarcinogenesis.** Twenty-five female Wistar rats (210-225 g) were  
17 given diethylnitrosamine 50 mg/L ad libitum in their drinking water for a period of 10  
18 weeks as previously described [16]. Another group of five animals were maintained as  
19 controls. All animals were administered a standard laboratory diet and were weighed  
20 each week. Five animals for each time point were sacrificed on week 4, 6, 8, 10 and,  
21 14. Tumours and liver tissues were removed and fixed in 10% neutral buffered formalin.  
22 Liver sections (5µm) were cut from paraffin-embedded blocks and stained Chk2  
23 (Abcam, #ab47433), phospho-Histone H2A.X (Cell Signaling, #9718) and hematoxylin  
24 and eosin (H&E) for histological examination and expression were determined  
25 according to H-score method.  
26  
27  
28  
29  
30  
31  
32  
33  
34

### 35 **CHK2 Expression in HCC samples from Cancer Genome Atlas (TCGA) database.**

36 The TCGA-LIHC cohort, containing 377 cases, was used to validate CHK2 expression  
37 levels in distinct subtypes of HCC. The TCGA database (<https://gdc-portal.nci.nih.gov>)  
38 was accessed on November 16, 2016 through the cGbioportal website  
39 (<http://www.cbioportal.org/>) to retrieve patients with either TP53 or CTNNB1 mutation.  
40 The TCGA\_participant\_barcode was used to download CHK2 expression from RNA-seq  
41 data using the firebrowse portal (<http://firebrowse.org>). Patients with co-occurrent  
42 mutations of TP53 and CTNNB1 were excluded from the analysis. CHK2 expression  
43 levels were retrieved for 101 patients with TP53 mutation and 85 patients with CTNNB1  
44 mutation. Statistical analysis was performed using the Mann-Whitney test with  
45 GraphPad 6 software.  
46  
47  
48  
49  
50  
51  
52  
53  
54  
55  
56  
57  
58  
59  
60

## Results

### **Chk2 is overexpressed in a subset of human HCC**

To test our hypothesis that hepatic tumorigenesis *per se* could be a cause of DNA damage and structural chromosome aberrations, an animal model of diethylnitrosamine-induced HCC was employed which induced macroscopical visible tumours after 14 weeks (Figure 1A). This model has previously been established to induce elevated mitotic errors, DNA damage and chromosome aberrations [17]. Using this model we can compare the expression levels of DNA damage response proteins induced by the genotoxic activity of diethylnitrosamine with a later phase represented exclusively by tumorigenesis. Therefore, Chk2, a DNA damage-response checkpoint kinase, and phospho-Histone H2A.X (Ser139) a component of chromatin which becomes phosphorylated following DNA damage (e.g. DNA double-stranded breaks) were investigated [18]. As shown in Figure 1B several nuclei of cancer cells exhibited an increased expression of Chk2 and phospho-Histone H2A.X revealing the presence of DNA damage. A timeline analysis of liver sections demonstrated a two-fold increase in Chk2 basal levels at 4 weeks followed by decreased values after 8 weeks (Figure 1C). In contrast, by 14 weeks tumours were macroscopically visible and histologically evident in 80% of animals. Immunostaining of HCC sections showed a significant increased expression of Chk2 and phospho-Histone H2A.X (Figure 1C and 1D) when compared with liver sections without evidence of tumours (8 weeks). Taken together, these data showed that the increased expression of Chk2 reflected a response triggered by DNA damage during tumorigenesis.

To extend these findings to humans, the expression of Chk2 in patients with cirrhotic-related HCC and normal liver was examined in liver biopsies from hospital archives (Florence cohort, supplemental Table 1). A nuclear staining of Chk2 was detectable in distinctive histotypes of HCC (supplemental Figure S2 and S3). More specifically, the expression level of Chk2 in different grades of HCC was evaluated. Remarkably, within histological grade II and III, significant quantitative differences between positive and negative Chk2 patients were found ( $p < 0.001$ ). Overall, these data demonstrated that

1  
2  
3 Chk2 nuclear positivity was found in 63.2% (31 of 49) of HCCs analyzed (supplemental  
4 Table 2 ). A separate validation cohort of patients was examined at Royal Free Hospital,  
5 London (supplemental Table 3). Normal liver tissue showed a moderate and diffuse  
6 cytoplasmic staining, whereas Grade 1 specimens were characterized with weak focal  
7 cytoplasmic Chk2 staining. In Grade 2, a Chk2 perinuclear and nuclear accumulation  
8 was observed. Specimens with Grade 3 showed exclusively a clear and strong nuclear  
9 staining, without cytoplasmic and perinuclear Chk2 staining (Figure 2a and  
10 supplemental Table 4). Furthermore, the expression levels of CHK2 were analyzed in a  
11 public available cohort of HCC from the TCGA database. We found a highly-significant  
12 increase of CHK2 expression in HCC with mutated TP53, a hallmark of genomic  
13 instability, with respect to those with CTNNB1/beta-catenin mutation (Figure 2b).  
14  
15  
16  
17  
18  
19  
20  
21  
22  
23  
24  
25  
26

### 27 **Defective chromosome segregations cause DNA damage**

28 The previous observations prompted us to investigate the functional role of Chk2. For  
29 this reason, three different cell lines were employed. The colon carcinoma cell line  
30 HCT116 was used i.e. a near-diploid cell line that faithfully segregates chromosomes to  
31 maintain a stable karyotype and is commonly employed in CIN studies [19,20].  
32 Secondly, the HCC cell line Huh7 was used which is a stable hyperdiploid karyotype  
33 with altered chromosomal structures and finally HuS cells were used marked with an  
34 unstable karyotype [21]. HuS cells are human hepatocytes immortalized with human  
35 telomerase reverse transcriptase (hTERT), a gene described commonly activated in  
36 human HCC [8, 9]. HuS cells just established in culture (0 generation) and hereafter  
37 referred to as HuS0gen showed a karyotype with a distribution of 46 chromosomes  
38 (Figure 3A) and expressed low levels of Chk2 protein in comparison to HCT116 and  
39 Huh7 (Figure 3B). The HuS0gen cells were maintained in culture and after 30  
40 consecutive generations (HuS30gen) were re-examined to verify the karyotype status.  
41 The cells showed a distribution near-triploid, with many structural chromosomal defects  
42 (Figure 3C and supplemental Figure S4A) and importantly this aspect was associated  
43 with increased expression of Chk2 protein, (Figure 3B). Likewise with the murine  
44 model, we evaluated the expression levels of phospho-Histone H2A.X (Ser139) in all  
45  
46  
47  
48  
49  
50  
51  
52  
53  
54  
55  
56  
57  
58  
59  
60

1  
2  
3 the cell lines studied. As shown in Figure 3D, both HuS0gen and HuS30gen cells  
4 exhibited high levels of phospho-Histone H2A.X, although with different levels of  
5 expression. These findings indicate the presence of DNA double-strand breaks, a  
6  
7 hallmark of DNA damage, in HuS cells.  
8  
9

### 10 11 12 **Overexpressed Chk2 mislocalizes with mitotic structures in HuS30gen cells but** 13 **not in HCT116 and Huh7.** 14

15 The finding of overexpressed Chk2 in both karyotyped stable HCT116 and Huh7 and in  
16 unstable karyotyped HuS30gen did not demonstrate a specific role for Chk2 in defective  
17 chromosome segregation. Therefore, we analyzed the cell lines HCT116, Huh7,  
18 HuS0gen and HuS30gen by immunofluorescence to examine a possible altered  
19 localization of Chk2 with the mitotic structures. Chk2 showed a localization to the  
20 spindle poles of metaphase mitotic structures in HCT116, Huh7, and HuS0gen (Figure  
21 4A). Very importantly, HuS30gen cells showed a robust localization of Chk2 with all  
22 metaphase mitotic structures indicating a clear mislocalization of Chk2 (Figure 4A and  
23 supplemental Figure S4B). These results suggest that in HuS0gen cells, expressing  
24 low levels of DNA damage, Chk2 weakly co-localized with the mitotic spindle  
25 components, whereas Chk2 is increased and strongly associated with all mitotic  
26 structures in HuS30gen cells that are expressing high levels of DNA damage. To  
27 further address these findings we stably transfected HuS0gen with HA-tagged Chk2,  
28 HuS0gen overexpressing Chk2 exhibited Chk2 localization with mitotic structures as  
29 shown in Figure 4B. Next, we measured the number of lagging chromosomes (Figure  
30 4C) in HuS0gen, HuS30gen, and in HuS0gen stably transfected with HA-tagged Chk2  
31 to mimic overexpression of Chk2. As shown in Figure 4D, overexpression of Chk2  
32 significantly correlated with high number of mitoses with lagging chromosomes in  
33 HuS30gen, and in HuS0gen overexpressing HA-tagged Chk2. These data clearly  
34 indicate that indeed overexpression and mislocalization of Chk2 itself contributes to  
35 defective chromosome segregations. Furthermore, to assess that the increased  
36 expression of Chk2 was specifically related to those mitoses with defective  
37 chromosome segregations and not a random deregulation of proteins, the expression  
38 of Nek2 (NIMA related kinase 2) protein was evaluated. Nek2 is a protein located at the  
39  
40  
41  
42  
43  
44  
45  
46  
47  
48  
49  
50  
51  
52  
53  
54  
55  
56  
57  
58  
59  
60

1  
2  
3 centrosome/spindle poles and responsible for chromosomal defective segregations [22].  
4 HCT116 and Huh7 cells showed a strong Nek2 expression whereas both HuS0gen and  
5 HuS30gen cells expressed low levels of Nek2 (supplemental Figure S5) suggesting that  
6 the previously observed overexpression of Chk2 in Hus30gen was a specific event that  
7 coincided with structural chromosomal defects and DNA damage.  
8  
9  
10  
11  
12  
13  
14  
15

### **Chk2 overexpression is correlated with increased chromosomal missegregations**

16 The findings that HuS30gen express high levels of Chk2 protein correlating with  
17 DNA damage (Figure 3B and 3D), prompted us to investigate the effects of knocking  
18 down expression of CHK2 in HuS30gen cells by retroviral-mediated short hairpin RNA  
19 (shRNA) transduction. A pool of four shRNA targeting Chk2 resulted in effective  
20 decrease of the protein (Figure 5A). It is important to note that silencing CHK2 coincided  
21 with a significant reduction of the number of HuS30gen cells with lagging chromosomes  
22 and HuS30gen mitotic index. To address any off target effects of the hairpins, we  
23 rescued the mitotic index and the number of cell with lagging chromosomes of the  
24 knockdown HuS30gen by expressing a myc-tagged version of Chk2 that circumvents  
25 the shRNA directed against human Chk2 (Figure 5B and 5C). These data demonstrate  
26 that Chk2 overexpression is correlated with increased chromosomal missegregation  
27 and mitotic index.  
28  
29  
30  
31  
32  
33  
34  
35  
36  
37  
38  
39  
40  
41

### **Defective mitoses-related DNA damage promotes Chk2 phosphorylation and mislocalization within mitotic structures.**

42 Human CHK2, is a 543 amino acid protein that consists of a N-terminal SQ/TQ cluster  
43 domain (SCD), a central forkhead-associated (FHA) domain, and a C-terminal  
44 serine/threonine kinase domain [23]. The SCD consists of multiple SQ/TQ (Ser-Gln/Thr-  
45 Gln) motifs with Thr68 being the primary site to be phosphorylated in response to DNA  
46 damage followed by phosphorylation of Thr387 in the activation loop of the kinase  
47 domain [24, 25]. Therefore, the protein expression of phospho-Thr68-Chk2 and  
48 phospho-Thr387-Chk2 in HuS30gen and HuS0gen stably transfected with HA-tagged  
49  
50  
51  
52  
53  
54  
55  
56  
57  
58  
59  
60



1  
2  
3  
4  
5  
6  
7  
8  
9  
10  
11  
12  
13  
14  
15  
16  
17  
18  
19  
20  
21  
22  
23  
24  
25  
26  
27  
28  
29  
30  
31  
32  
33  
34  
35  
36  
37  
38  
39  
40  
41  
42  
43  
44  
45  
46  
47  
48  
49  
50  
51  
52  
53  
54  
55  
56  
57  
58  
59  
60

Chk2 were assessed. As shown in Figure 5D phospho-Thr68-Chk2 and phospho-Thr387-Chk2 were highly expressed in HuS30gen and in HuS0gen stably transfected with HA-Chk2, but not in HuS0gen as expected. Furthermore, phospho-Thr68-Chk2 revealed a robust localization with components of the mitotic spindle as previously shown for Chk2. In particular, a prominent association of phospho-Thr68-Chk2 was observed with mitotic structures such as the spindle poles, kinetochores and midbody in Hus30gen cells, (Figure 5E, *upper panels*). In contrast, Huh7 cells expressing low levels of DNA damage ( see Figure 3D) did not show co-localization of phospho-Thr68-Chk2 with mitotic structures, (Figure 5E, *lower panels*). Taken together, these results reveal an overexpression/mislocalization of phosphorylated Chk2, which is correlated with its activation status, and manifestations of lagging chromosomes-induced DNA damage.

### **Up-regulated Chk2 cooperates with Aurora B for chromosome condensation and cytokinesis.**

As previously shown the typical localization of activated Chk2 in HuS30gen cells was observed in kinetochores and specifically the midbody, suggesting a possible interaction with Aurora B kinase. This protein is known to be involved in chromosome condensation, the assembly of the spindle midzone in anaphase and the midbody during telophase. Furthermore, Aurora B kinase has been identified as an effective predictor of aggressive HCC recurrence, in relation to genomic instability [26]. Therefore, HuS0gen cells were transfected with HA-tagged Chk2 and immunofluorescence analyses revealed a co-localization of Chk2 with Aurora B throughout all mitotic phases, and this co-localization was also present in cells marked with lagging chromosomes (Figure 6A and 6B). Aurora B is responsible for the phosphorylation of histone H3 (pHH3), and pHH3 serine residue (Ser-10) is considered to be a crucial event for the onset of mitosis. The utility of pHH3 to identify mitoses has been demonstrated in several cancer studies [27-29]. As, the co-localization of Aurora B with Chk2 was demonstrated we further explored the co-localization of overexpressed HA-Chk2 with pHH3. As shown in Figure 6C, Chk2 exhibited a striking co-localization

1  
2  
3 with pHH3. Overall, the data so far demonstrate that in unstable HuS cells during  
4 mitosis, lagging chromosomes cause DNA damage, overexpression of Chk2 which  
5 localizes to all mitotic structures. This overexpressed and mislocalized Chk2 protein  
6 contributes to a constant mitotic activity and more important Aurora B kinase and pHH3  
7 interact with Chk2. This favours a possible scenario where an overexpressed and  
8 mislocated Chk2 overrules the signalling specificity at distinct mitotic checkpoints  
9 inducing itself chromosomal aberrations, hence CIN.  
10  
11  
12  
13  
14  
15  
16

### 17 **The forkhead associated domain (FHA) determines Chk2 mislocalization to** 18 **mitotic structures and is essential for DNA damage response**

19  
20 To understand how Chk2 is recruited to the mitotic structures in such a specific manner,  
21 we investigated Chk2 specific domain(s) that are required for Chk2 localization. A  
22 series of RFP-tagged Chk2 variants were created, each variant carrying a point  
23 mutation or a deletion, and were expressed and localized individually in HuS30gen. The  
24 RFP-Chk2D347A, a kinase-inactive mutant, localized similarly as shown for RFP-Chk2  
25 (Figure 7A). This indicated that the kinase activity is dispensable for Chk2  
26 mislocalization (Figure 7B). The FHA domain of Chk2 has been proposed to mediate  
27 localization of Chk2 to mitotic structures for the reason that FHA domains function as  
28 phospho-threonine-binding protein motifs. The deletion of the Chk2 FHA domain  
29 disrupted the localization of the protein to mitotic structures such as the spindle poles  
30 and kinetochores indicating that the deletion of the FHA is responsible for the observed  
31 mislocalization (Figure 7C). Indeed, the entire FHA domain RFP-tagged localized to  
32 mitotic structures similar to RFP-Chk2 (Figure 7D). Along these lines, we can conclude  
33 that the FHA domain is required for proper Chk2 localization to mitotic structures.  
34 Furthermore, we analyzed the effects of the several Chk2 mutants on lagging  
35 chromosomes. Interestingly, transfection of HuS0gen with Chk2 FHA domain  
36 significantly reduced the number of lagging chromosomes (Figure 7E). This result  
37 suggests a dominant negative effect of Chk2 FHA domain towards endogenous  
38 Chk2.  
39  
40  
41  
42  
43  
44  
45  
46  
47  
48  
49  
50  
51  
52  
53  
54

### 55 **Rb phosphorylation contributes to defective mitoses in HuS cells.**

56  
57  
58  
59  
60

1  
2  
3 An important point raised by defective mitoses-related DNA damage as observed in this  
4 study is why the cells do not sense signals deployed to curb cell proliferation, as  
5 normally the growth of cultured diploid cells is halted by chromosome missegregation. In  
6 HCC, p53 deficiency has been described to participate in the development of CIN,  
7 however the relevance of p53 to HCC initiation, progression, or both, remains an area of  
8 active investigation [2]. Therefore, the basal level of p53 in HCT116, Huh7, HuS30gen  
9 and HuS0gen was investigated. As shown in Figure 8A, p53 was expressed in Huh7  
10 and at low level in HuS30gen cells. HuS0gen cells did not express p53 in basal  
11 conditions, however treatment of the cells with 5-fluorouracil, a DNA-damaging  
12 agent, triggered a strong p53 protein expression. Based on these findings we assume  
13 that p53 expression may be a late event in HuS cells, as a result of several  
14 defective mitoses [19]. Furthermore, mutated p53 was not present in HCT116 and  
15 HuS30gen cells in contrast to Huh7 cells that we used as a positive control (Figure 8B)  
16 [30].  
17

18  
19 The possible involvement of the retinoblastoma protein Rb was evaluated since several  
20 studies have described Rb as an important regulator of cell division [31]. Specifically,  
21 Rb phosphorylation determines Rb inactivation and leads to defective mitoses [31].  
22 Therefore, we evaluated the protein expression levels of phospho-Rb (Ser807/811) in  
23 HCT116, HuS0gen cells and HuS30gen. As shown in Figure 8C HuS30gen cells  
24 express higher levels of phospho-Rb (Ser807/811) in comparison to HuS0gen cells.  
25 Moreover, HCT116 (Figure 8D), HuS30gen (Figure 8E) and HuS0gen (Figure 8F)  
26 exhibited a localization of phospho-Rb (Ser807/811) at the chromosomal level. Taken  
27 together, these findings suggest that in HuS30gen Rb phosphorylation is required to  
28 sustain mitotic activity which leads to mitotic defects.  
29  
30  
31  
32  
33  
34  
35  
36  
37  
38  
39  
40  
41  
42  
43  
44  
45  
46  
47  
48  
49  
50  
51  
52  
53  
54  
55  
56  
57  
58  
59  
60

## Discussion

The neoplastic evolution of HCC proceeds through a multi-step histological process that is less well defined than that of other cancer types. Hyperplastic nodules of regenerating hepatocytes have normal karyotype and represent a potential first step towards HCC. These lesions can progress to dysplastic nodules, which have abnormal chromosome features including numerical and structural alterations. These dysplastic nodules can evolve to HCC marked with recurrent regions of copy number change and allelic imbalances [3, 4]. Loss of certain tumour suppressors or gain of specific oncogenes promote cell division as shown in many previous studies [25, 32]. We demonstrate that this coincides with defective mitoses which can cause DNA damage. This scenario is conceivable considering that massive deregulation of mitosis is incompatible with cell survival and can even be tumour suppressive [33]. Therefore, subtle rather than massive mitotic defects are expected to underlie CIN in HCC, allowing a tolerable level of chromosome defects. To support this view we have provided evidence in this study that hepatocarcinogenesis with lagging chromosomes elicits the expression of DNA damage response protein Chk2. Thus, the overexpression of Chk2 and its mislocalization within structures of the mitotic spindle sustains cell division and chromosomes missegregation [34-36]. This forms a self-perpetuating mechanism causing DNA damage (Figure 9).

We have also found that functional Rb inactivation is necessary but not sufficient to trigger chromosome missegregation. Indeed, phosphorylation of Rb deregulates transcription factor E2F, and well-characterized targets of E2F include multiple genes whose products are required to maintain cell division [37-39]. The integrity of chromosomal DNA is under constant surveillance throughout the cell division. Surprisingly, the fact that a deregulated functional Chk2 itself might cause *per se* CIN through abnormal spindle localization is intriguing, as the role of Chk2 in the maintenance of genetic stability has mainly been ascribed to its function in DNA damage checkpoint signalling.

When DNA damage occurs, Chk2 is first activated in the nucleus during interphase, spreads to the cytoplasm and localizes to the various mitotic structures because of the

1  
2  
3 phosphopeptide-binding ability of the FHA domain [40]. During DNA damage,  
4 chromosomes accumulate a number of phosphoproteins around DNA damage sites  
5 [41]. Chk2 may bind to specific phosphoproteins through the FHA domain forming  
6 numerous chromosomal foci and trap Chk2 to the structures. When this FHA domain is  
7 deleted, the molecule is excluded from the mitotic chromosomes and therefore does not  
8 mislocalize to kinetochores, spindle poles and midbody as was demonstrated in Figure  
9 7. Moreover, Chk2 localization to the kinetochores and midbody region suggests that  
10 Chk2 may directly affect spindle assembly function, similar to Aurora B kinase [42], but  
11 only when DNA damage exists. The data obtained in this study fit a model whereby  
12 abnormal expression of Chk2 and Aurora B kinase disrupts the sensitive balance of  
13 mitotic proteins, which in turn undermines faithful chromosome segregation [34]. If the  
14 relative expression levels of the proteins involved in the quality control of the machinery  
15 which ensures chromosome segregation fidelity is disrupted by mitotic errors and DNA  
16 damage, the resulting imbalance could further compromise chromosome segregation  
17 accuracy.  
18  
19

20  
21 Since Chk2 overexpression can induce oligomerization and cis- and trans  
22 phosphorylation of regulatory residues [43, 44], one possibility is that local enrichment  
23 of Chk2 at kinetochores and midbody regions facilitates Chk2 oligomerization and  
24 activation. This mechanism may alter regulation of Chk2-dependent processes such as  
25 centrosome function, cell cycle progression, and chromosome segregation. The  
26 discovery of a role for Chk2 in HCC, its association with DNA damage and CIN may  
27 have potential diagnostic and prognostic significance. Importantly, grading  
28 heterogeneity inside a tumour is frequently observed and may significantly limit  
29 diagnosis and choice of treatment. This study suggests that stratification of HCC  
30 patients according to CIN status and/or DNA damage may be useful to minimize the  
31 confounding effects of tumor CIN status in clinical trials. Along these lines, we propose  
32 that the diagnostic and prognostic value of Chk2 should be further verified in  
33 prospective clinical trials.  
34  
35  
36  
37  
38  
39  
40  
41  
42  
43  
44  
45  
46  
47  
48  
49  
50  
51  
52  
53  
54  
55  
56  
57  
58  
59  
60

1  
2  
3 **Competing interests:** The authors have declared that no conflict of interest exists.  
4  
5

6  
7 **Contributors:** V.C. study concept and experimental design, cloning experiments,  
8 analysis and interpretation of data, drafting of the manuscript, study supervision; M.L.  
9 immunoblotting and karyotype experiments; S.M. immunohistochemistry and animal  
10 experiments; T.M. immunofluorescence, live-cell, bioinformatics analysis; A.H.  
11 immunohistochemistry analysis; TV.L. human tissue evaluation; M.P. critical review of  
12 the manuscript; K.R. experimental design, data analysis, critical review of the  
13 manuscript; A.G conceptual and intellectual input, critical review of the manuscript. All  
14 authors read and approved the final manuscript.  
15  
16  
17  
18  
19  
20  
21  
22  
23

24 **Funding:** This study was in part supported by the University of Florence and Regione  
25 Toscana “Ricerca regionale in materia di salute D.D. n. 3242 ”, and by Ministero  
26 dell’Istruzione, dell’Università FIRB RBAP10MY35\_002 and FiorGen Foundation.  
27  
28  
29  
30  
31  
32  
33  
34  
35  
36  
37  
38  
39  
40  
41  
42  
43  
44  
45  
46  
47  
48  
49  
50  
51  
52  
53  
54  
55  
56  
57  
58  
59  
60

## References

- [1] McGlynn KA, Petrick JL, London WT. Global epidemiology of hepatocellular carcinoma: an emphasis on demographic and regional variability. *Clin Liver Dis* 2015;19:223-238
- [2] Farazi PA, DePinho RA. Hepatocellular carcinoma pathogenesis: from genes to environment. *Nat Rev Cancer*. 2006;6:674-87.
- [3] Carloni V, Luong T V, Rombouts K. Hepatic stellate cells and extracellular matrix in hepatocellular carcinoma: more complicated than ever. *Liver Int*. 2014;34:834-843.
- [4] Mazzocca A, Liotta F, Carloni V. Tetraspanin CD81-regulated cell motility plays a critical role in intrahepatic metastasis of hepatocellular carcinoma. *Gastroenterology* 2008; 135:244-256
- [5] Sakakura C, Hagiwara A, Taniguchi H, et al. Chromosomal aberrations in human hepatocellular carcinomas associated with hepatitis C virus infection detected by comparative genomic hybridization. *Br. J. Cancer* 1999;80: 2034–2039.
- [6] Wong N, Lai P, Pang E, et al. A comprehensive karyotypic study on human hepatocellular carcinoma by spectral karyotyping. *Hepatology* 2000;32: 1060–1068.
- [7] Kusano N, Shiraishi K, Kubo K, et al. Genetic aberrations detected by comparative genomic hybridization in hepatocellular carcinomas: their relationship to clinic pathological features. *Hepatology*.1999;29:1858-62
- [8] Shimojima M, Komine F, Hisatomi H, et al. Detection of telomerase activity, telomerase RNA component, and telomerase reverse transcriptase in human hepatocellular carcinoma. *Hepatol. Res*. 2004; 29: 31–38.
- [9] Youssef N, Paradis V, Ferlicot S, et al. In situ detection of telomerase enzymatic activity in human hepatocellular carcinogenesis. *J. Pathol*. 2001;194: 459–465.
- [10] Kawai, H. Suda T, Aoyagi Y, et al. Quantitative evaluation of genomic instability as a possible predictor for development of hepatocellular carcinoma: comparison of loss of heterozygosity and replication error. *Hepatology* 2000; 31: 1246–1250.
- [11] Guan XY, Fang Y, Sham JS, et al. Recurrent chromosome alterations in hepatocellular carcinoma detected by comparative genomic hybridization. *Genes Chromosomes Cancer* 2000; 29:110–116.

- 1  
2  
3 [12] Wilkens L, Flemming P, Gebel M, et al. Induction of aneuploidy by increasing  
4 chromosomal instability during dedifferentiation of hepatocellular carcinoma. Proc. Natl  
5 Acad. Sci. USA. 2004;101: 1309–1314  
6  
7  
8 [13] Almendro V, Marusyk A, Polyak K. Cellular heterogeneity and molecular evolution  
9 in cancer. Annu Rev Pathol. 2013;8:277-302.  
10  
11 [14] Bakhoum F S, Compton A D. Chromosomal instability and cancer: a complex  
12 relationship with therapeutic potential. J Clin Invest. 2012;122:1138–1143  
13  
14 [15] Carloni V, Mazzocca A, Mello T, et al. Cell fusion promotes chemoresistance in  
15 metastatic colon carcinoma. Oncogene. 2013; 32: 2649–266  
16  
17 [16] Carloni V, Vizzutti F, Pantaleo P. Farnesyltransferase inhibitor ABT-100 is a potent  
18 liver cancer chemopreventive agent. Clin Cancer Research. 2005; 11: 4266-4274.  
19  
20 [17] Basak R, Saha BK, Chatterjee M. Inhibition of diethylnitrosamine-induced rat liver  
21 chromosomal aberrations and DNA-strand breaks by synergistic supplementation of  
22 vanadium and 1 $\alpha$ ,25-dihydroxyvitamin D<sub>3</sub>. Biochim Biophys Acta. 2000;1502:273-282  
23  
24 [18] Rogakou EP, Pilch DR, Orr AH, et al. DNA double-stranded breaks induce histone  
25 H2AX phosphorylation on serine 139. J Biol Chem. 1998;273:5858-68  
26  
27 [19] Thompson SL, Compton DA. Proliferation of aneuploid human cells is limited by  
28 a p53-dependent mechanism. J Cell Biol. 2010; 188:369-381  
29  
30 [20] Stolz A, Ertych N, Kienitz A, et al. The CHK2- BRCA1 tumour suppressor pathway  
31 ensures chromosomal stability in human somatic cells. Nat Cell Biol. 2010 ;12:492-499.  
32  
33 [21] Durantel D, Zoulim F. Going towards more relevant cell culture models to study the  
34 *in vitro* replication of serum-derived hepatitis C virus and virus/host cell interactions J  
35 Hepatol 2007; 46:1–5  
36  
37 [22 ] Hayward DG, Fry AM. Nek2 kinase in chromosome instability and cancer. Cancer  
38 Lett. 2006;237:155-166.  
39  
40 [23] Cai Z, Chehab NH, Pavletich NP. Structure and activation mechanism of the CHK2  
41 DNA damage checkpoint kinase. Mol Cell. 2009;35:818-29  
42  
43 [24] Ward IM, Wu X, Chen J. Threonine 68 of Chk2 is phosphorylated at sites of DNA  
44 strand breaks. J Biol Chem. 2001;276:47755-8  
45  
46  
47  
48  
49  
50  
51  
52  
53  
54  
55  
56  
57  
58  
59  
60



- 1  
2  
3  
4  
5  
6  
7  
8  
9  
10  
11  
12  
13  
14  
15  
16  
17  
18  
19  
20  
21  
22  
23  
24  
25  
26  
27  
28  
29  
30  
31  
32  
33  
34  
35  
36  
37  
38  
39  
40  
41  
42  
43  
44  
45  
46  
47  
48  
49  
50  
51  
52  
53  
54  
55  
56  
57  
58  
59  
60
- [25] Janssen A, van der Burg M, Szuhai K, et al. Chromosome segregation errors as a cause of DNA damage and structural chromosome aberrations. *Science*. 2011;333:1895-1898
- [26] Adams RR, Carmena M, Earnshaw WC. Chromosomal passengers and the (aurora) ABCs of mitosis. *Trends Cell Biol* 2001; 11: 49–54.
- [27] Hayashi-Takanaka Y, Yamagata K, Nozaki N, et al. Visualizing histone modifications in living cells: spatio-temporal dynamics of H3 phosphorylation during interphase. *J Cell Biol*. 2009; 187:781-790
- [28] Crosio C, Fimia GM, Loury R, et al. Mitotic phosphorylation of histone H3: spatio-temporal regulation by mammalian Aurora kinases *Mol Cell Biol*. 2002;22:874-85
- [29] Ladstein RG, Bachmann IM, Straume O, et al. Prognostic importance of the mitotic marker phospho-histone H3 in cutaneous nodular melanoma. *J Invest Dermatol*. 2012;132:1247-1252.
- [30] Mazzocca A, Giusti S, Hamilton AD, et al. Growth inhibition by the farnesyltransferase inhibitor FTI-277 involves Bcl-2 expression and defective association with Raf-1 in liver cancer cell lines. *Mol Pharmacol*. 2003;63:159-166
- [31] Manning AL, Dyson NJ. pRB, a tumor suppressor with a stabilizing presence. *Trends Cell Biol*. 2011;21:433-41
- [32] Baker DJ, Jin F, Jegannathan KB, et al. Whole chromosome instability caused by Bub1 insufficiency drives tumorigenesis through tumor suppressor gene loss of heterozygosity. *Cancer Cell*. 2009;16:475–486.
- [33] Weaver BA, Silk AD, Montagna C, et al. Aneuploidy acts both oncogenically and as a tumor suppressor. *Cancer Cell*. 2007; 11:25–36.
- [34] Lin ZZ, Jeng YM, Hu FC, et al. Significance of Aurora B overexpression in hepatocellular carcinoma. Aurora B overexpression in HCC. *BMC Cancer*. 2010;10:461
- [35] Tanaka S, Aii S, Yasen M, et al. Aurora kinase B is a predictive factor for the aggressive recurrence of hepatocellular carcinoma after curative hepatectomy. *Br J Surg*. 2008; 95: 611–619
- [36] Lu G, Shan T, He S, et al. Overexpression of CENP-H as a novel prognostic biomarker for human hepatocellular carcinoma progression and patient survival. *Oncol Rep*. 2013;30:2238-44.

- 1  
2  
3 [37] Burkhardt DL, Sage J. Cellular mechanisms of tumour suppression by the  
4 retinoblastoma gene. *Nat Rev Cancer*.2008;8:671-82  
5  
6 [38] Genovese C,Trani D, Caputi M, et al. Cell cycle control and beyond: emerging  
7 roles for the retinoblastoma gene family. *Oncogene*. 2006;25:5201-9.  
8  
9 [39] van Harn T, Foijer F, van Vugt M, et al. Loss of Rb proteins causes genomic  
10 instability in the absence of mitogenic signaling. *Genes Dev*. 2010;24:1377-88  
11  
12 [40] Takeda S, Collins ER, Kurahashi K. The FHA domain determines *Drosophila*  
13 Chk2/Mnk localization to key mitotic structures and is essential for early embryonic DNA  
14 damage responses. *Mol Biol Cell*. 2015 ;26:1811-1828.  
15  
16 [41] Polo SE, Jackson SP. Dynamics of DNA damage response proteins at DNA  
17 breaks: a focus on protein modifications. *Genes Dev* 2011;25: 409–433.  
18  
19 [42] Fuller BG, Lampson MA, Foley EA, et al. Midzone activation of aurora B in  
20 anaphase produces an intracellular phosphorylation gradient. *Nature*. 2008; 453:1132-  
21 1136  
22  
23 [43] Schwarz JK, Lovly CM, Piwnica-Worms H. Regulation of the Chk2 protein kinase  
24 by oligomerization-mediated cis- and trans-phosphorylation. *Mol. Cancer Res*. 2003;1:  
25 598–609.  
26  
27 [44] Li J, Williams BL, Haire LF, et al. Structural and functional versatility of the FHA  
28 domain in DNA-damage signaling by the tumor suppressor kinase Chk2. *Mol Cell*.  
29 2002;9:1045-54.  
30  
31  
32  
33  
34  
35  
36  
37  
38  
39  
40  
41  
42  
43  
44  
45  
46  
47  
48  
49  
50  
51  
52  
53  
54  
55  
56  
57  
58  
59  
60

## Figure legends

**Figure 1. Immunohistochemical detection of Chk2 and phospho-Histone H2A.X(Ser139) in diethylnitrosamine-induced HCC.** **A)** Representative image of livers of female Wistar rats used as control (left panel) and rats HCC (right panel) which were given diethylnitrosamine 50 mg/L *ad libitum* in their drinking water for a period of 10 weeks. Scale bar, 10mm. **B)** Liver sections (HCC 14 weeks) were analyzed for Chk2 and phospho-Histone H2A.X(Ser139) expression (see nuclear staining in the right panels, Scale bar 200µm.). **C)** and **D)** Five animals for each time point were sacrificed on week 4, 6, 8, 10, 14. Chk2 and phospho-Histone H2A.X(Ser139) expression were determined according to H-score method. The average positive percentage was calculated, and a H-score between 0 and 300 was obtained where 300 was equal to 100% of tumour cells stained brown strongly. The positive cut off was considered  $\geq 100$ . The levels of Chk2 and phospho-Histone H2A.X(Ser139) expression are indicated as fold increase of cut-off values.\*  $P < 0.001$  vs 8 weeks. Chk2 expression was evaluated in the nucleus of the HCC tissue as indicated by the brown staining.

**Figure 2a. Detection of Chk2 protein in human HCC by immunohistochemistry.** Paraffin-embedded tissue sections were stained with a specific antibody for Chk2 and hematoxylin and eosin. **A)** Normal liver with a moderate, diffuse cytoplasmic Chk2 staining. **B)** Chk2 immunoreactivity in cancer tissue from a tumour classified Grade 1 characterized by a weak focal cytoplasmic Chk2 staining. **C)** and **D)** Chk2 immunoreactivity in cancer tissue from a tumour classified Grade 2 with a strong Chk2 perinuclear and moderate nuclear accumulation. **E)** Chk2 immunoreactivity in cancer tissue from a tumour classified Grade 3 with a clear and strong nuclear staining, without cytoplasmic and perinuclear Chk2 staining. Scale bar 100µm.

### **Figure 2b. CHK2 Expression in HCC subtypes from TCGA database.**

CHK2 expression from RNA-seq data was retrieved for 101 patients with TP53 mutations and 85 patients with CTNNB1/beta-catenin mutations, using the LIHC cohort of 377 cases (accessed on November 16, 2016). Patients with both TP53 and CTNNB1

1  
2  
3 mutations were excluded from the analysis. Expression levels are expressed as log<sub>2</sub>exp  
4 (absolute levels) or z-score (expression levels in HCC samples normalized to the  
5 expression levels in the reference population). Graph shows mean ± SEM, \*p<0.0001  
6  
7  
8  
9

10  
11  
12 **Figure 3. Defective chromosome segregation causes Chk2 overexpression in**  
13 **hTERT immortalized human hepatocytes. A)** Examples of chromosome numbers  
14 from metaphase spreads of HCT116, Huh7 and HuS0gen cells (*upper panels*). In the  
15 *bottom panels* individual chromosome numbers percentage from metaphase spreads of  
16 HCT116, Huh7 and HuS0gen cells are represented (n=20). **B)** Representative  
17 immunoblot out of three independent experiments demonstrating the protein levels of  
18 Chk2 in indefinite cultured HCT116 and Huh7 cells, in HuS0gen cells and HuS0gen  
19 cells after 30 generations in culture (HuS30gen). **C)** Example of chromosomes from  
20 metaphase spreads of HuS30gen exhibiting numerical and structural (red arrow)  
21 alterations; the histogram shows individual chromosome numbers percentage in  
22 HuS30gen (n=20). **D)** Representative immunoblot out of three independent experiments  
23 demonstrating the protein levels of phospho-Histone H2A.X (Ser139), a hallmark of  
24 DNA damage, in indefinite cultured HCT116, Huh7, HuS0gen and HuS30gen cells.  
25  
26  
27  
28  
29  
30  
31  
32  
33  
34  
35  
36

37 **Figure 4. Chk2 overexpression is linked to lagging chromosomes. A)** Chk2 co-  
38 localizes with chromosomal structures only in HuS30gen cells. Asynchronously growing  
39 HCT116, Huh7, HuS0gen and HuS30gen cells were synchronized in metaphase by  
40 releasing cells from thymidine treatment into MG132. Metaphase mitotic spindles  
41 were monitored by immunofluorescence and typical examples are given, endogenous  
42 Chk2 (red); kinetochores, CENP-H (green); chromosomes are stained with Hoechst  
43 33342 (blue). Chk2 co-localization with chromosome structures was quantified in  
44 metaphases (mean±SD; n≥ 300 metaphases) **B)** HuS0gen that express low levels of  
45 protein Chk2 were stably transfected with HA-tagged Chk2 and asynchronously  
46 growing cells were evaluated for lagging chromosomes; typical examples of lagging  
47 chromosomes containing anaphase and telophase are given (HA-Chk2, red; CENP-H,  
48 green; chromosomes, Hoechst 33342, blue). **C)** Asynchronously growing HuS30gen  
49  
50  
51  
52  
53  
54  
55  
56  
57  
58  
59  
60

1  
2  
3 cells expressing H2B-GFP (to visualize in vivo lagging chromosomes) were analyzed  
4 by live cell microscopy. Left, phase-contrast images; middle, fluorescence images; right,  
5 merge. Scale bar, 10  $\mu$ m. **D**) Asynchronously growing cells, HCT116, Huh7, HuS0gen,  
6 HuS30gen, and HuS0gen stably transfected with HA-tagged Chk2 (HuS-Chk2) were  
7 stained with CENP-H (constitutive component of kinetochores) and Hoechst 33342  
8 (chromosomes). Anaphase and telophase lagging chromosomes were counted by  
9 immunofluorescence, (mean  $\pm$  SD; n= 500 cells) \*p<0.01 vs HuS0gen. \*\*p<0.05 vs  
10 HuS-mock  
11  
12  
13  
14  
15  
16  
17  
18

19 **Figure 5. Overexpressed/phosphorylated Chk2 is correlated with increased**  
20 **chromosomal missegregation. A)** HuS30gen cells were stably retrovirally-transduced  
21 either with a control shRNA (shCTL) or shRNAs targeting CHK2 (shChk2). Chk2-  
22 depleted HuS30gen cells were used to reconstitute expression of CHK2 by introducing  
23 a shRNA resistant mutant of CHK2 (myc-Chk2resist). The protein levels were  
24 determined by immunoblotting and a representative example is shown. **B)**  
25 Asynchronously growing cells HuS30-shCTL, HuS30-shChk2 and Chk2-depleted  
26 HuS30gen reconstituted with shRNA resistant mutant of CHK2 were stained with  
27 CENP-H (kinetochores) and Hoechst 33342 (chromosomes). Anaphase and telophase  
28 lagging chromosomes counted by immunofluorescence, (mean  $\pm$  SD; n= 500 cells), \*p <  
29 0.01vs controls. **C)** The mitotic index of asynchronously growing cells HuS30-shCTL,  
30 HuS30- shChk2 and Chk2-depleted HuS30 reconstituted with shRNA resistant mutant  
31 of CHK2 was measured by counting the mitotic figures (prophase, metaphase,  
32 anaphase, and telophase) positively stained for phosphorylated histone H3 (pHH3).The  
33 mitotic index was calculated as percentage of mitotic cells/total cells as described in  
34 Materials and Methods. Error bars show the SD from the means of three independent  
35 experiments, \*p<0.01vs controls. **D)** Chk2 phosphorylation levels on Thr68 and Thr387.  
36 Representative immunoblot out of three showing asynchronously growing HCT116,  
37 HuS0gen, HuS30gen, and HuS0gen stably transfected with Chk2 (HuS-Chk2). Cell  
38 lysates were immunoblotted against p-Thr68-Chk2 and p-Thr387-Chk2. **E)** Activated  
39 Chk2 localizes with mitotic structures in HuS30gen cells. Example of metaphase,  
40 anaphase and telophase from unstable HuS30gen cells and stable HCC cell line,  
41  
42  
43  
44  
45  
46  
47  
48  
49  
50  
51  
52  
53  
54  
55  
56  
57  
58  
59  
60

1  
2  
3 Huh7. Activated Chk2 (p-Thr68-Chk2, red) co-localizes with CENP-H, constitutive  
4 component of kinetochores (green) only in HuS30gen. Arrowheads indicate lagging  
5 chromosomes, (Hoechst 33342, blue). Scale bar, 10  $\mu$ m.  
6  
7  
8

9  
10 **Figure 6. Up-regulated Chk2 cooperates with Aurora B for chromosome**  
11 **condensation and cytokinesis**  
12

13  
14 **A)** HuS0gen cells showing expression and localization of endogenous Chk2 (red),  
15 Aurora B kinase (green), and chromosomes (Hoechst 33342, blue) **B)** Co-localization of  
16 Aurora B kinase (green) with HuS0gen overexpressing HA-tagged Chk2 (red) in  
17 mitoses with lagging chromosomes (Hoechst 33342, blue). Cells were fixed and  
18 analyzed by fluorescence microscopy. Arrows indicate spindle midzone region,  
19 arrowheads indicate midbody region. **C)** HuS0gen cells overexpressing HA-tagged  
20 Chk2 were stained with antibody anti-HA (red) and phospho-Histone H3 (green) to show  
21 co-localization of Chk2 with missegregating chromosomes. Scale bar, 10  $\mu$ m.  
22  
23  
24  
25  
26  
27  
28  
29  
30  
31

32 **Figure 7. FHA domain is essential for Chk2 localization and contributes to**

33 **sustain lagging chromosomes.** Red fluorescent protein was conjugated at the N-  
34 terminus of each Chk2 mutant. Left, schematic diagrams. RFP was omitted. RFP-Chk2  
35 mutants were transfected in HuS30gen cells, synchronized and blocked in metaphase  
36 by treatment with MG132 for 2 hours, the cells were analyzed by fluorescence  
37 microscopy. **A)** Expression and subcellular localization of RFP-Chk2. RFP-Chk2  
38 decorates the spindle poles (two red dots), and localizes with kinetochores (CENP-H,  
39 green), chromosomes are stained with Hoechst 33342, blue. **B)** RFP-Chk2D347A,  
40 kinase dead mutant (KD), localizes similarly to RFP-Chk2. **C)** RFP-Chk2 $\Delta$ FHA does not  
41 localize to mitotic structures. **D)** RFP-FHA localizes to spindle poles, kinetochores. FHA  
42 domain tagged with RFP is similar to RFP-Chk2. Scale bar, 10  $\mu$ m. **E)** Quantification of  
43 lagging chromosomes during anaphases and telophases in HuS0gen cells stably  
44 expressing Chk2(KD), Chk2 $\Delta$ FHA and Chk2FHA mutants. Chk2 FHA mutant  
45 significantly reduces the number of lagging chromosomes as a result of the dominant  
46  
47  
48  
49  
50  
51  
52  
53  
54  
55  
56  
57  
58  
59  
60

1  
2  
3 negative effect towards endogenous Chk2. mean±SD; n=400 anaphases and  
4 telophases. \*p<0.01vs control  
5  
6  
7

8  
9 **Figure 8. P53 and phosphorylated Rb expression in HCT116, HuS30gen and**  
10 **HuS0gen. A)** Representative immunoblot out of three showing the protein levels of p53  
11 in HCT116, Huh7, HuS30gen and HuS0gen cells. In the same blot are represented p53  
12 expression levels of HuS0gen cells after treatment with DNA-damaging agent 5-  
13 fluorouracil (5-FU, 1µM). **B)** Representative images of HCT116, Huh7 and HuS30gen  
14 cells fixed and stained with an antibody directed against the mutated codon TGT at  
15 position 220 of p53 protein. Huh7 cells, previously characterized as p53 mutated  
16 (see reference 30), are used as positive control. **C)** Representative immunoblot out of  
17 three independent experiments showing the protein levels of Rb and phosphorylated  
18 Rb, p-Rb (Ser807/811), in HCT116, HuS30gen and HuS0gen cells. **D), E) and F)**  
19 Mitoses of asynchronously growing HCT116, HuS30gen and HuS0gen cells stained  
20 with the antibody specific for phosphorylated Rb and analyzed by fluorescence  
21 microscopy; p-Rb (Ser807/811) red; chromosomes (Hoescht 33342, blue). Scale bar,  
22 10 µm.  
23  
24  
25  
26  
27  
28  
29  
30  
31  
32  
33

34  
35 **Figure 9.** A proposed schema illustrating the mechanism by which Chk2  
36 overexpression and mislocalization sustains defective mitoses throughout hepatic  
37 tumorigenesis. Mitotic errors represented by lagging chromosomes cause DNA  
38 damage and overexpress Chk2 in genetically unstable cells. Chk2 and  
39 phosphorylated forms of Chk2 mislocalize within the mitotic structures in the presence  
40 of DNA damage contributing to increase the numbers of lagging chromosomes.  
41  
42  
43  
44  
45  
46  
47  
48  
49  
50  
51  
52  
53  
54  
55  
56  
57  
58  
59  
60

1  
2  
3  
4  
5  
6  
7  
8  
9  
10  
11  
12  
13  
14  
15  
16  
17  
18  
19  
20  
21  
22  
23  
24  
25  
26  
27  
28  
29  
30  
31  
32  
33  
34  
35  
36  
37  
38  
39  
40  
41  
42  
43  
44  
45  
46  
47  
48  
49  
50  
51  
52  
53  
54  
55  
56  
57  
58  
59  
60

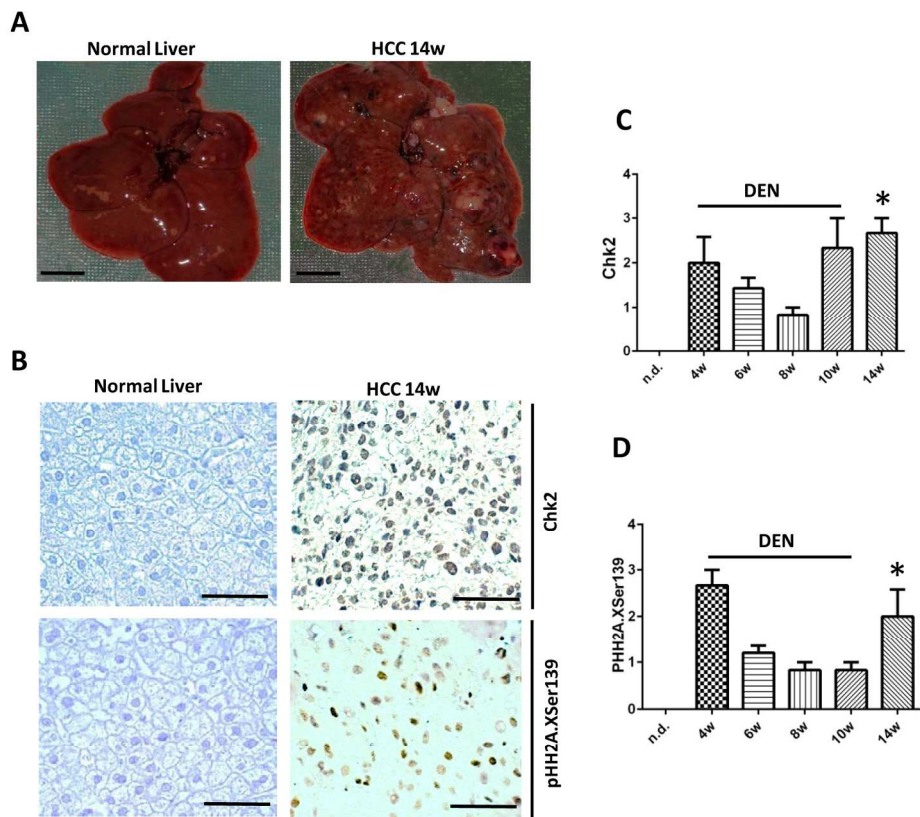


Figure 1

181x155mm (300 x 300 DPI)



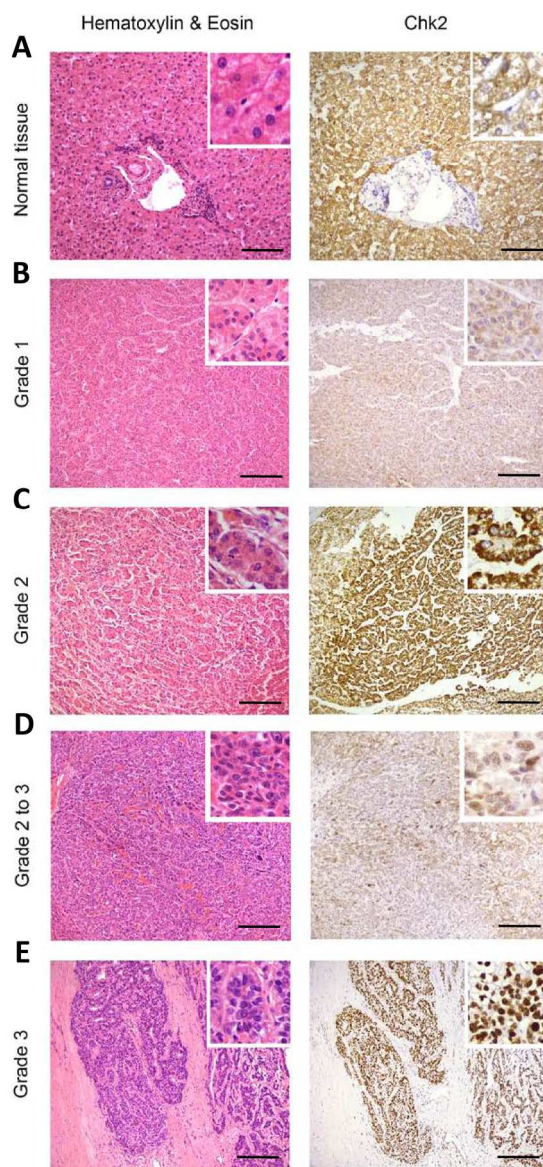


Figure 2a

111x227mm (300 x 300 DPI)

AM

1  
2  
3  
4  
5  
6  
7  
8  
9  
10  
11  
12  
13  
14  
15  
16  
17  
18  
19  
20  
21  
22  
23  
24  
25  
26  
27  
28  
29  
30  
31  
32  
33  
34  
35  
36  
37  
38  
39  
40  
41  
42  
43  
44  
45  
46  
47  
48  
49  
50  
51  
52  
53  
54  
55  
56  
57  
58  
59  
60

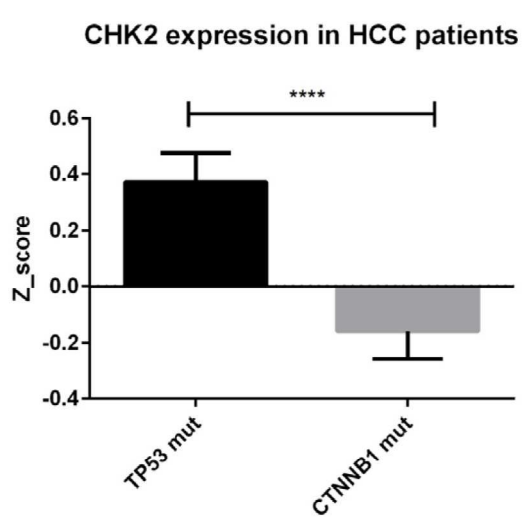
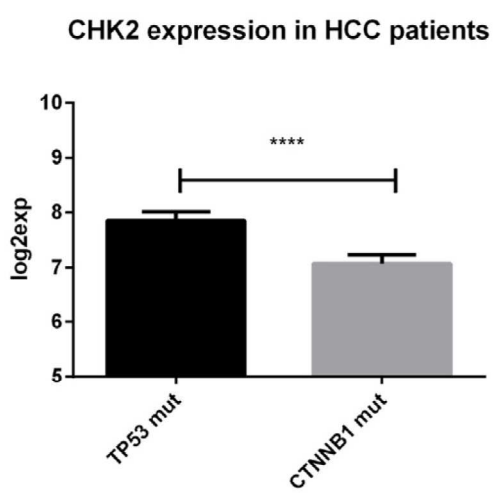


Figure 2b

173x192mm (300 x 300 DPI)

Only

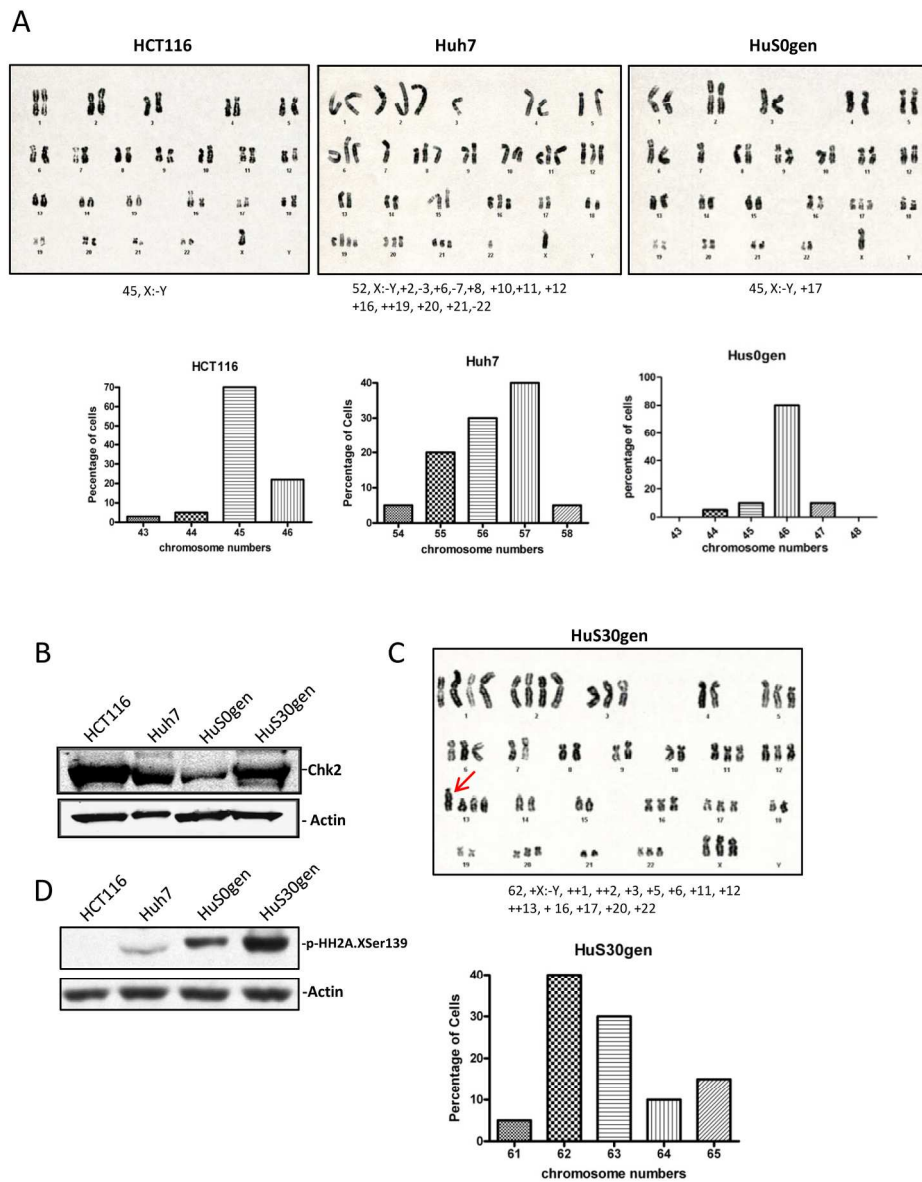


Figure 3

186x230mm (300 x 300 DPI)

1  
2  
3  
4  
5  
6  
7  
8  
9  
10  
11  
12  
13  
14  
15  
16  
17  
18  
19  
20  
21  
22  
23  
24  
25  
26  
27  
28  
29  
30  
31  
32  
33  
34  
35  
36  
37  
38  
39  
40  
41  
42  
43  
44  
45  
46  
47  
48  
49  
50  
51  
52  
53  
54  
55  
56  
57  
58  
59  
60

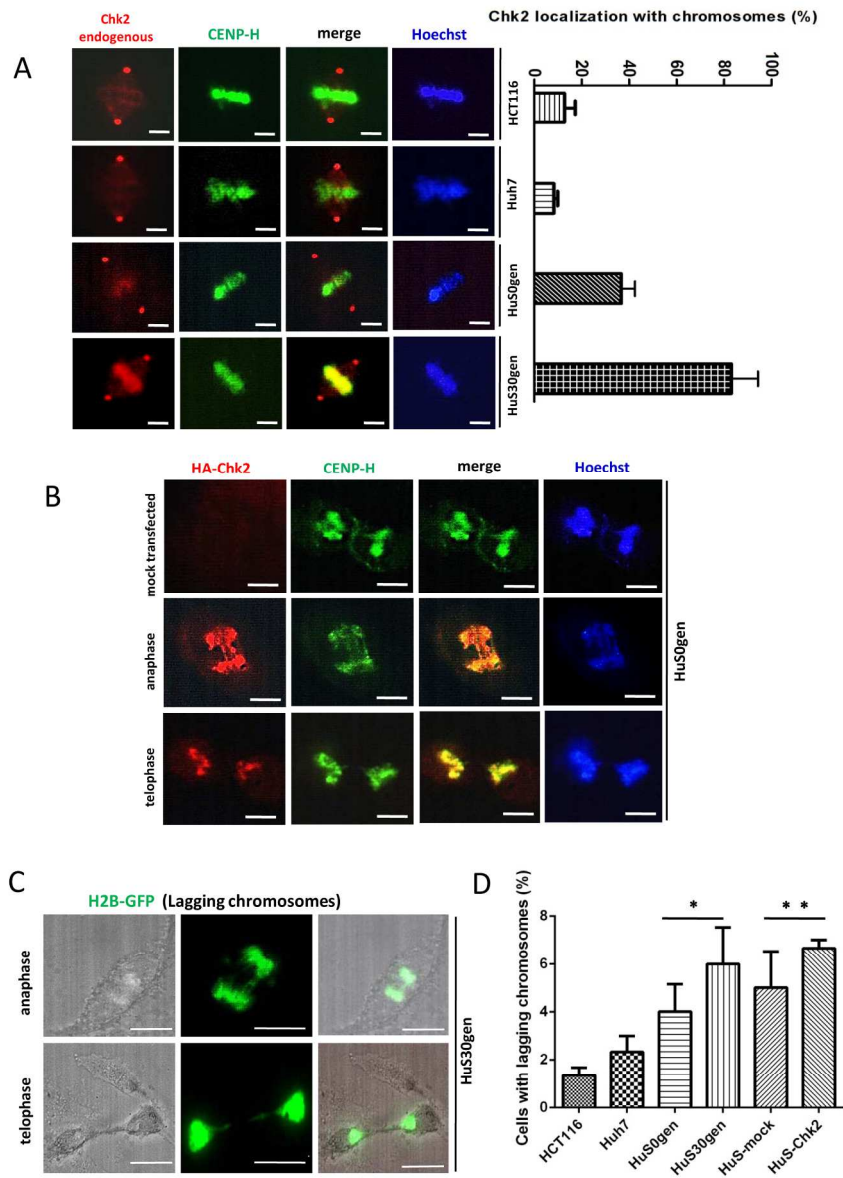


Figure 4

169x233mm (300 x 300 DPI)

AM

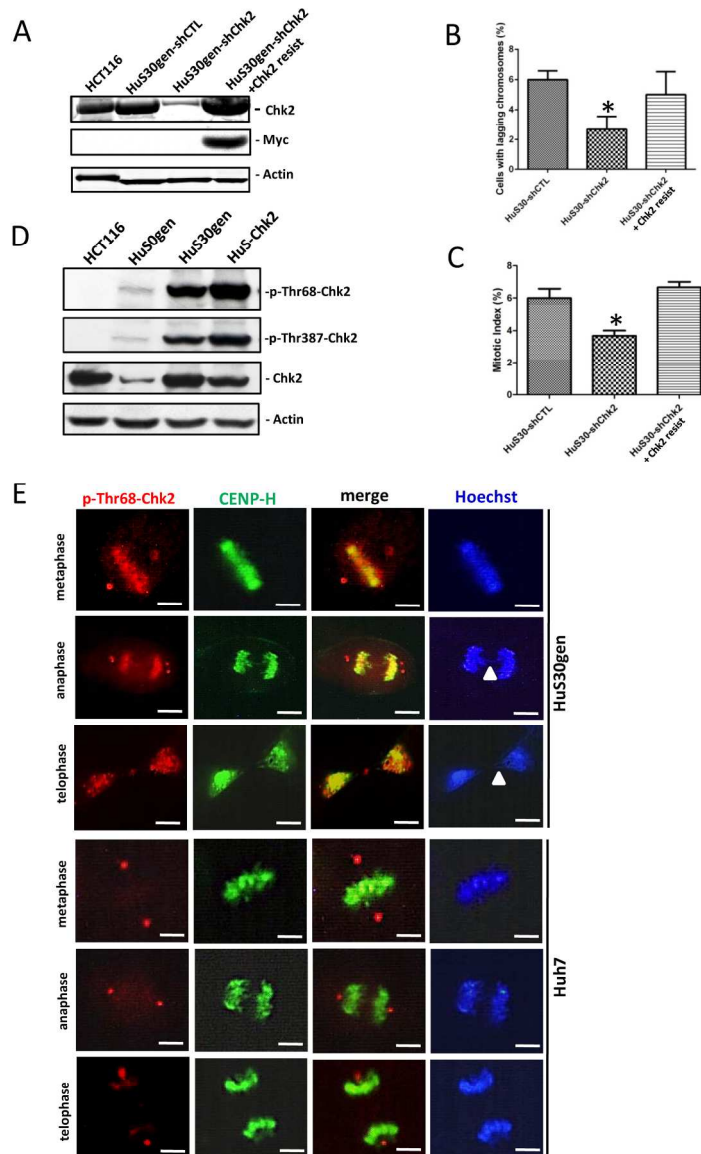


Figure 5

158x232mm (300 x 300 DPI)

1  
2  
3  
4  
5  
6  
7  
8  
9  
10  
11  
12  
13  
14  
15  
16  
17  
18  
19  
20  
21  
22  
23  
24  
25  
26  
27  
28  
29  
30  
31  
32  
33  
34  
35  
36  
37  
38  
39  
40  
41  
42  
43  
44  
45  
46  
47  
48  
49  
50  
51  
52  
53  
54  
55  
56  
57  
58  
59  
60

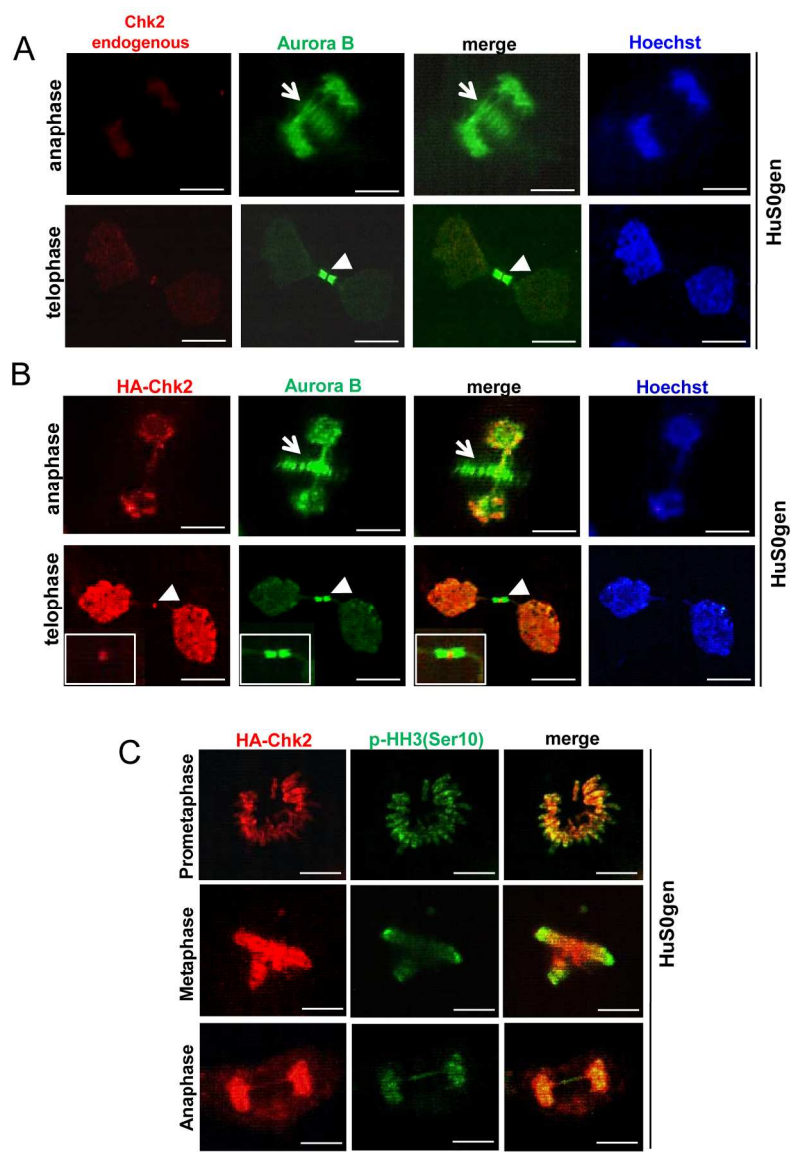


Figure 6

161x232mm (300 x 300 DPI)



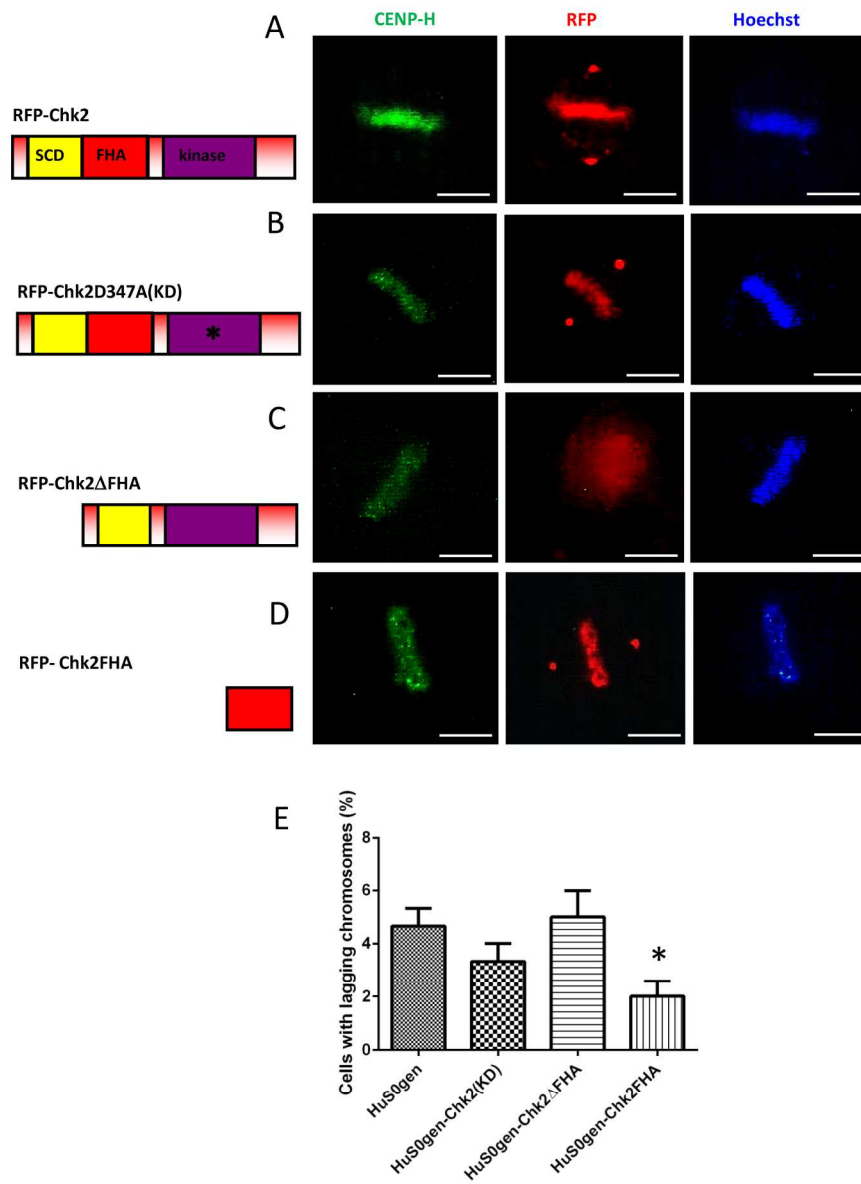


Figure 7

170x217mm (300 x 300 DPI)

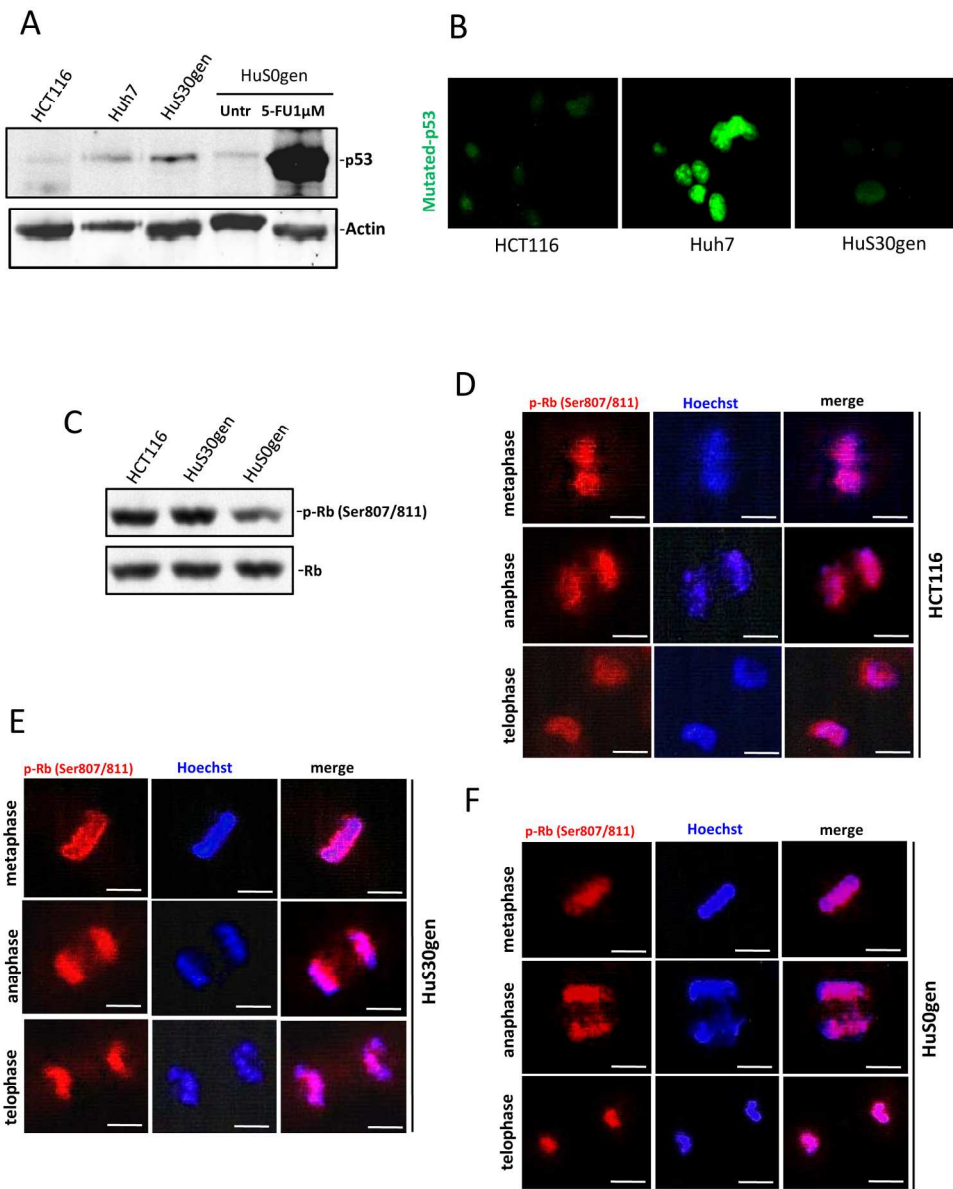


Figure 8

168x205mm (300 x 300 DPI)



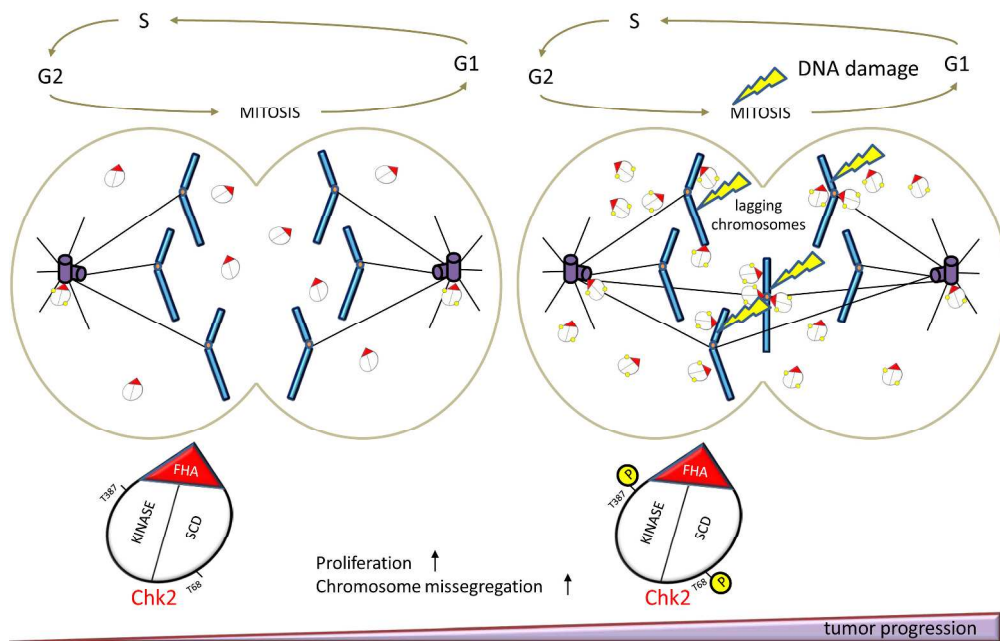


Figure 9

276x177mm (300 x 300 DPI)

**Table 1. Patients and Tumor Characteristics (Florence Cohort)**

<b>Age</b>	
<60 years	35
≥60 years	14
<b>Gender</b>	
Male	37
Female	12
<b>Etiology of the liver disease</b>	
HCV *	28
HBV †	6
NBNC ‡	15
<b>Tumor size</b>	
≤ 5 cm	44
≥ 5 cm	5
<b>Cirrhosis</b>	
Yes	47
No	2
<b>Tumor numbers</b>	
Single	46
Multiple	3

\* HCV: hepatitis C virus

† HBV: hepatitis B virus

‡ NBNC: non-hepatitis B, non-hepatitis C

**Table 2.** Chk2 nuclear expression in human HCCs (Florence cohort) and its association with tumor grade. Chk2 expression was evaluated in various HCC grades and the correlation of specimens with high Chk2 was measured (Two-tailed Fisher's exact test)

HCC grade	n	Chk2 <sup>neg</sup>	Chk2 <sup>pos</sup>	P value
II	16	11 (68.7%)	5 (31.3%)	< 0.001
III	33	7 (21.2%)	26 (78.8%)	
Total	49	18 (36.8%)	31 (63.2%)	

**Table 3. Patients and Tumor Characteristics (Royal Free Cohort)**

<b>Age</b>	
<60 years	9
≥60 years	11
<b>Gender</b>	
Male	19
Female	1
<b>Etiology of the liver disease</b>	
HCV *	6
HBV †	2
NBNC‡	12
<b>Tumor size</b>	
≤ 5 cm	15
≥ 5 cm	5
<b>Cirrhosis</b>	
Yes	9
No	11
<b>Tumor numbers</b>	
Single	14
Multiple	6

\*HCV: hepatitis C virus

† HBV: hepatitis B virus

‡NBNC: non-hepatitis B, non-hepatitis C

**Table 4.** Chk2 nuclear expression in human HCCs (London cohort) and its association with tumor grade. Chk2 expression was evaluated in various HCC grades and the correlation of specimens with high Chk2 was measured (Two-tailed Fisher's exact test)

HCC grade	n	Chk2 <sup>neg</sup>	Chk2 <sup>pos</sup>	P value
I	3	3	0	
II	12	8	4	<0.05
III	5	0	5	
Total	20	11	9	

## SUPPLEMENTARY METHODS

**Cell cultures and antibodies.** HCT116, Huh7 were from ATCC. Human hepatocytes immortalized with *TERT* gene (HuS) were provided by Makoto Hijikata (Laboratory of Human Tumor Viruses, Institute of Virus Research, Kyoto University, Japan). HCT116 and Huh7 were grown in DMEM medium supplemented with 10% fetal bovine serum, 1% penicillin/streptomycin and 1% glutamine at 37°C and 95% humidity and 5% CO<sub>2</sub>. HuS cells were cultured in DMEM medium supplemented with 5% fetal bovine serum, 5% normal human serum from male type AB serum (Sigma), 1% DMSO, 0.1µL/mL insulin, 0.1µL/mL hydrocortisone and 2 ng/mL EGF (Calbiochem). Antibodies employed were anti-Chk2 (Cell Signaling, #3440), anti-phospho-Thr68-Chk2 (Cell Signaling, #2661), anti-phospho-Thr387-Chk2 (Cell Signaling, #2668), anti-Nek2 (Santa Cruz Biotechnology, sc#55601), anti-γ-tubulin (Santa Cruz Biotechnology, sc#7396-R), anti-CENP-H (Santa Cruz Biotechnology, sc#22792), anti-phospho-Histone H3(Ser10) (Cell Signaling, #9701), anti-phospho-Rb(Ser807/811) (Cell Signaling, #8516), anti-p53 (Santa Cruz Biotechnology, Clone Pab240, sc#99), anti-Aurora B kinase (Sigma,#A5102), anti-β-actin (clone AC-15) (Sigma-Aldrich). Secondary antibodies conjugated to AlexaFluor 488 and 594 (Molecular Probes) were used in immunofluorescence analysis. Secondary antibodies used in immunoblot analysis were, IRDye 800CW anti-rabbit (#926-32210, Lycor Bioscience, Lincoln, NE) and IRDye 800CW anti-mouse (#926-32211, Lycor Bioscience). DNA was stained with Hoechst 33342 (ThermoScientific).

**Karyotype analysis.** Cells were plated on Slideflask 50-70% confluent. For cell-cycle synchronization, cells were blocked twice with 2 mM thymidine (Sigma) and released into the medium. For synchronization at metaphase, cells were released from thymidine for 6 hours, followed by treatment with MG132 (20 µM; Calbiochem) for an additional 2 h. The culture medium was removed and a hypotonic solution (0,56% potassium chloride, 0,50% sodium citrate tribasic dehydrate) was added and incubated for 10 mins at room temperature (RT). The hypotonic solution was removed and a pre-fix solution (acetic acid 0,5%) for 10 mins at RT was added. Next, a fixative solution (acetic acid/ ethanol) was added for 10 mins. The metaphase spread chromosomes were stained with Giemsa for G-banding and analyzed with Zeiss Axioplan 2 microscope.

### Western blot analysis

Standard procedures were used. Briefly, protein lysates were quantified by the Bradford method (Bio-Rad, Hercules, CA) and fifty micrograms of total protein were denatured and separated on MiniProtran TGX precast gels (Bio-Rad). After separation, the proteins were electroblotted to nitrocellulose membranes with semidry Trans-Blot (Bio-Rad) and successively membranes were incubated in a blocking solution consisting of phosphate buffered saline (PBS)/Odyssey Blocking Buffer 1:1 (PBS/OBB) (Lycor Bioscience) for 1 hour at room temperature. Membranes were then incubated overnight at 4°C with the appropriate antibody, washed four times with PBS-Tween 0.1% solution, and probed with the secondary IRDye antibodies according to the manufacturer's instructions. The protein bands were analysed by the Odyssey Infrared Imaging System (Lycor Bioscience) using software for protein quantification.

**Retroviral infections.** The following shRNAs (OriGene Technologies) were stably delivered into Hus cells by retroviral infection according to manufacturer's instructions. TF320655 is a set of plasmids containing four shRNA constructs in retroviral vector (pRFP-C-RS) to knockdown human *CHK2*. TR30015 is a non-effective 29mer scrambled shRNA used as control. Retroviral particles were generated by transient transfection of the Phoenix-amphotropic packaging cell line as previously described. Phoenix cells plated onto 100mm dishes were transfected at approximately 80% confluence with 20 µg of plasmid using Lipofectamine 2000 transfection reagent. After 48 hours, virus-containing supernatant was recovered and centrifuged, filtered (0.45µm filters) and used immediately or aliquoted and frozen at -80°C. Target cells were infected with virus-containing supernatant in the presence of polybrene (8µg/ml, Sigma). Retrovirally infected Hus cells were selected in puromycin-containing medium and, after 2 weeks, reduced expression of Chk2 protein was assessed by immunoblotting. A shRNA resistant mutant of *CHK2* was generated using the mutagenesis kit (QuikChange; Agilent Technologies) yielding an exchange of four bases within the shRNA targeting sequence (5'-GCTCCTTAGAGACAGTGTCCACTCAGGAA-3') without changing the resulting amino acid sequence and cloned into the pcDNA3.1 plasmid.

**Expression of Chk2 mutants.** The plasmid pBabe-HA tagged Chk2 (Addgene) coding for full length human *CHK2* was used as template to clone Chk2 into pTagRFP-C1 (Evrogen) plasmid by PCR and the construction of a kinase dead mutant (D347A) by site-directed mutagenesis primer sense

1  
2  
3 5'-AACGGTATTATACACCGTGCATTAAAGCCAGA-3'. To generate plasmid RFP-  
4 Chk2 $\Delta$ FHA coding a Chk2 protein lacking the FHA domain, a fragment containing amino  
5 acids 1–112 of Chk2 was isolated by PCR from pBabe-HA tagged Chk2 and cloned as a  
6 XhoI-EcoRI fragment into the pTagRFP-C1 vector. A second fragment containing amino  
7 acids 201-342 isolated by PCR was cloned in frame using PstI-KpnI into the vector  
8 pTagRFP-C1 harbouring the fragment 1-112. To produce RFP-Chk2FHA plasmid the XhoI  
9 and BamHI-flanked fragment containing the FHA domain was cloned from pBabe-HA  
10 tagged Chk2 into the pTagRFP-C1vector.  
11  
12  
13  
14  
15  
16  
17

18 **Immunofluorescence and live-cell microscopy.** Cells were fixed in ice-cold methanol  
19 for 5 min at -20°C, washed twice with PBS at RT, blocked 60 minutes in 3% BSA with  
20 0.05% NP-40 and immunostained. HuS cells were transfected with H2B-GFP (Addgene)  
21 and seeded onto Petri dishes with a 35-mm glass bottom (Ibidi). Phase-contrast and  
22 fluorescence images were taken by using an inverted fluorescence microscope (DMIRE2;  
23 Leica) and a 40X Plan Neo 0.6 NA Ph2 objective. Live imaging was performed in air, at  
24 37°C in 5% CO<sub>2</sub>, using a camera (DFC300FX; Leica) and IM50 acquisition software  
25 (Leica).  
26  
27  
28  
29  
30  
31  
32

33 **Mitotic index.** Cells were fixed in ice-cold methanol for 5 min at -20°C, washed twice with  
34 PBS at RT, blocked 60 minutes in 3% BSA with 0.05% NP-40, stained with antibody  
35 against pHH3 (Ser10) and Hoechst 33342 for DNA. Ten high-power fields were examined  
36 by fluorescence microscopy, mitotic figures (profase, metaphase, anaphase, and  
37 telophase) were counted and mitotic index was calculated as percentage of mitotic green  
38 cells(pHH3)/total blue cells (Hoechst).  
39  
40  
41  
42  
43  
44  
45

46 **Statistical analysis.** The significance of correlations between CHK2 expression patterns  
47 in human tissue and grade was measured by applying two-sided Fisher's exact test. All  
48 quantifications of mitotic indexes and lagging chromosomes were based on at least 3  
49 independent experiments, in which at least 500 mitotic figures were evaluated. The data  
50 are expressed as means $\pm$ SD. Statistical analysis was performed by two-tailed Student's t-  
51 test.  
52  
53  
54  
55  
56  
57  
58  
59  
60



1  
2  
3 **Ethical Approval for Use of Human Material and Animal Experimentation.** Informed  
4 written consent was obtained from all patients in accordance with the guidelines of  
5 University Hospital of Florence and Royal Free Hospital, London. All animal experiments  
6 were approved and performed in accordance with the regulations set forth by the Italian  
7 Ministry of Health.  
8  
9  
10  
11  
12  
13  
14  
15  
16  
17  
18  
19  
20  
21  
22  
23  
24  
25  
26  
27  
28  
29  
30  
31  
32  
33  
34  
35  
36  
37  
38  
39  
40  
41  
42  
43  
44  
45  
46  
47  
48  
49  
50  
51  
52  
53  
54  
55  
56  
57  
58  
59  
60

Confidential: For Review Only

## SUPPLEMENTARY LEGENDS

**Figure S1. H-score examples (range 0 to 300).** Case (A) weak Chk2 expression; H-score 20. Case (B) moderate Chk2 positive; H-score 150. Case (C) remarkable Chk2 expression; H-score 230. Case (D) strong Chk2 expression; H-score 300. Scale bar, 100  $\mu\text{m}$ .

**Figure S2. Detection of Chk2 protein in different histotype of human HCC.** A) Normal liver negative control (sections treated with nonimmune antibody), B) Normal liver showing a faint cytoplasmic staining of Chk2 without nuclear detection, C) HCC pseudo-glandular histotype negative control (sections treated with nonimmune antibody), D) HCC pseudo-glandular histotype with nuclear expression of Chk2, E) HCC trabecular histotype negative control, F) HCC trabecular histotype showing strong nuclear Chk2 expression, G) HCC scirrhous histotype negative control, H) HCC scirrhous histotype with the scattered cancer cells showing nuclear staining for Chk2. Scale bar, 100  $\mu\text{m}$ .

**Figure S3. A) Vascular invasion of a cluster of HCC cells showing Chk2 nuclear staining** (100x magnification). B) inset shows the presence of a cell with lagging chromosomes (250x magnification).

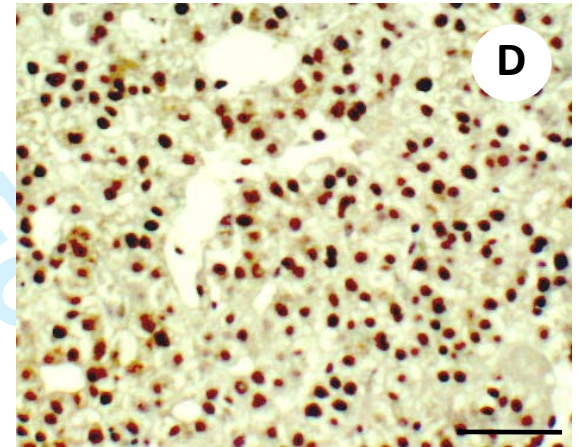
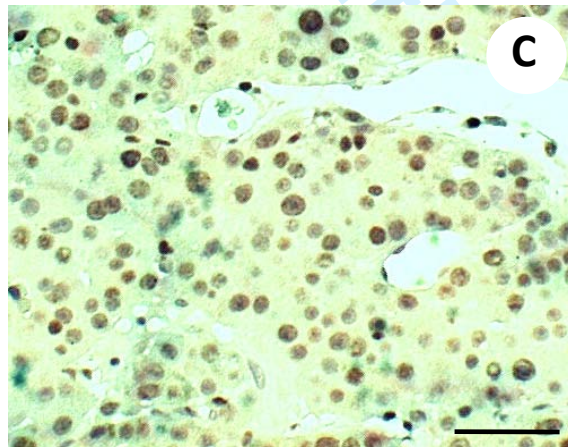
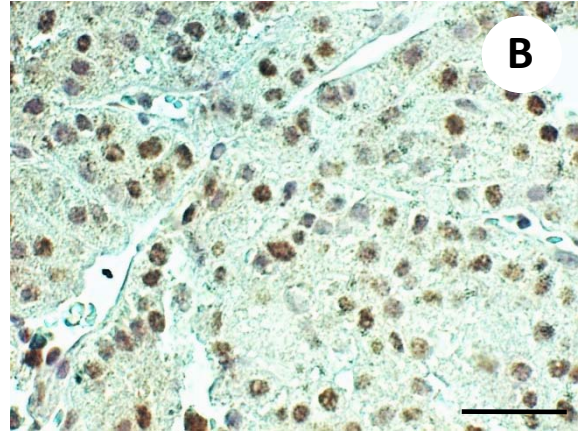
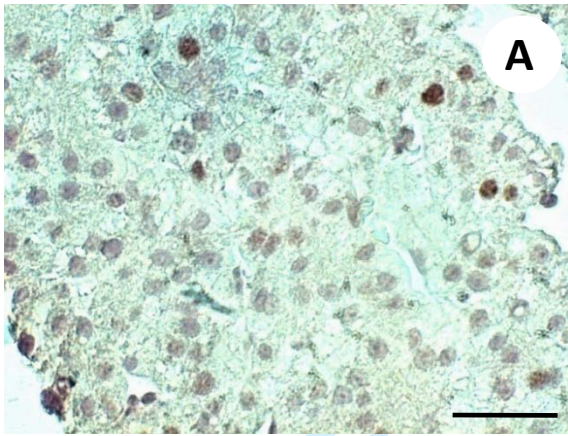
**Figure S4. G-banding images of chromosome spreads and Chk2 localization through mitotic phases in HuS30gen cells.** A) The chromosomes of metaphase spread of HuS30gen exhibit numerical and structural (red arrows) abnormalities. B) HuS30gen cells were synchronized by thymidine treatment and then released into medium. Bipolar spindle assembly and chromosome alignment were monitored by immunofluorescence and typical examples are given, endogenous Chk2 (green),  $\gamma$ -tubulin (red), chromosomes are stained with Hoechst 33342 (blue).

**Figure S5. Nek2 interactions with mitotic structures in HCT116, Huh7, HuS0gen and HuS30gen.** A) Representative immunoblot out of three independent experiments showing the Nek2 protein expression in indefinite cultured HCT116 and Huh7 cells, or in HuS0gen and HuS30gen cells, \* $p \leq 0.001$  vs HCT116 or Huh7. B) Nek2 localization in metaphase blocked HCT116 and Huh7 cells. Nek2 (arrows) localizes with poles of mitotic spindle in both cell lines (Nek2, red;  $\gamma$ -tubulin, green; chromosomes, bleu). C) HuS0gen and

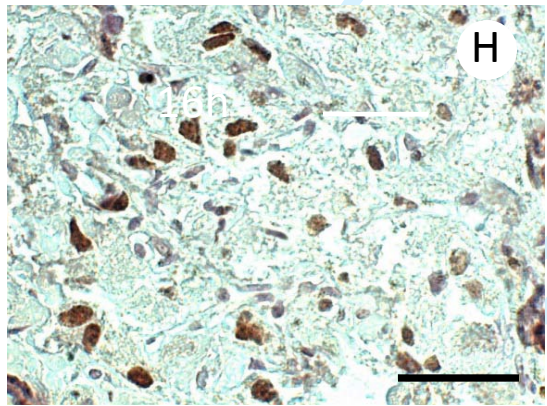
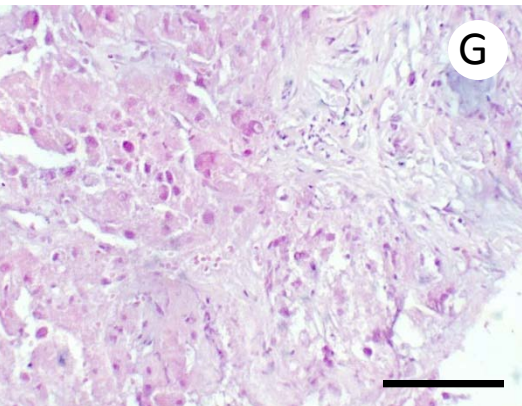
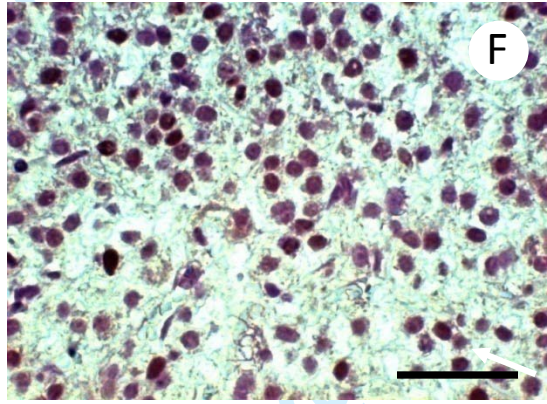
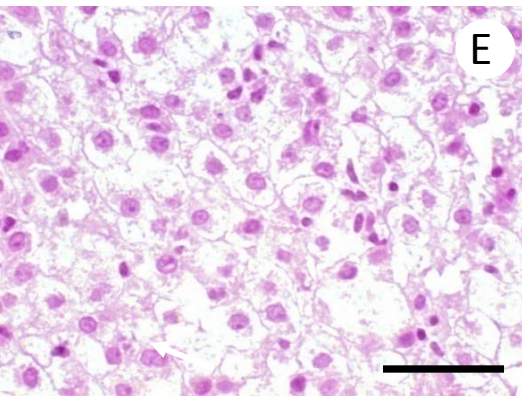
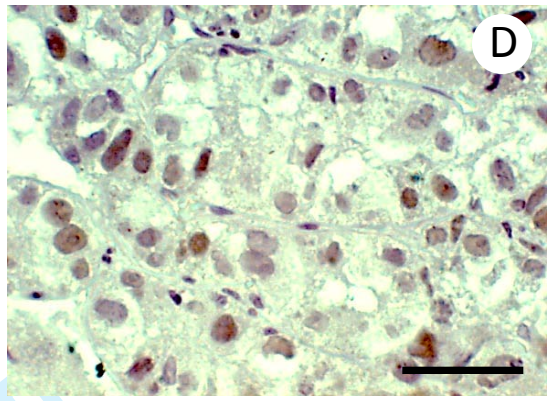
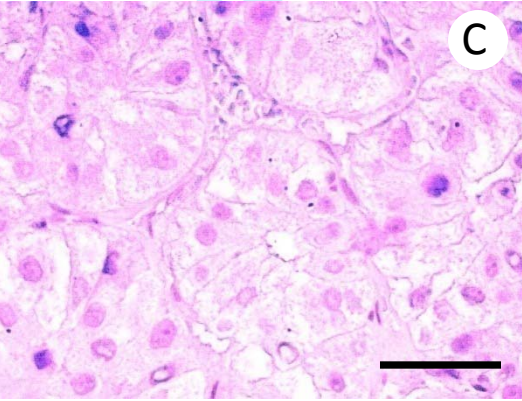
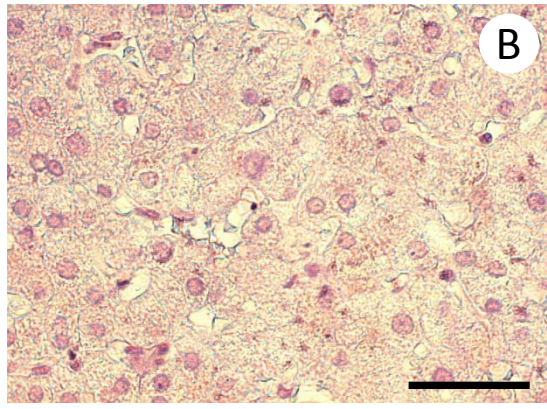
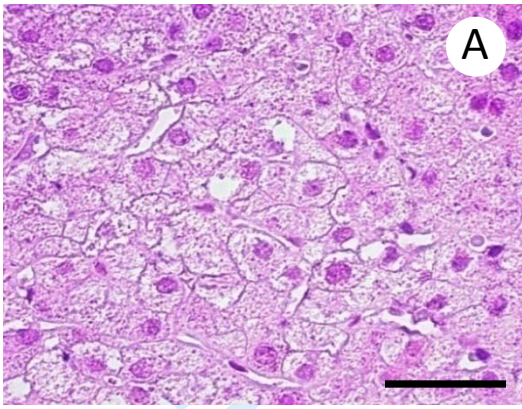
1  
2  
3 HuS30gen were synchronized and blocked in metaphase. Representative image of Nek2  
4 (arrow) localization in HuS0gen and HuS30gen (Nek2, green;  $\gamma$ -tubulin, red;  
5 chromosomes, bleu). Both cell lines show low expression levels of Nek2 protein. Scale  
6 bar, 10  $\mu$ m.  
7  
8  
9  
10  
11  
12  
13  
14  
15  
16  
17  
18  
19  
20  
21  
22  
23  
24  
25  
26  
27  
28  
29  
30  
31  
32  
33  
34  
35  
36  
37  
38  
39  
40  
41  
42  
43  
44  
45  
46  
47  
48  
49  
50  
51  
52  
53  
54  
55  
56  
57  
58  
59  
60

Confidential: For Review Only

1  
2  
3  
4  
5  
6  
7  
8  
9  
10  
11  
12  
13  
14  
15  
16  
17  
18  
19  
20  
21  
22  
23  
24  
25  
26  
27  
28  
29  
30  
31  
32  
33  
34  
35  
36  
37  
38  
39  
40  
41  
42  
43  
44  
45  
46  
47  
48  
49  
50  
51  
52  
53  
54  
55  
56  
57  
58

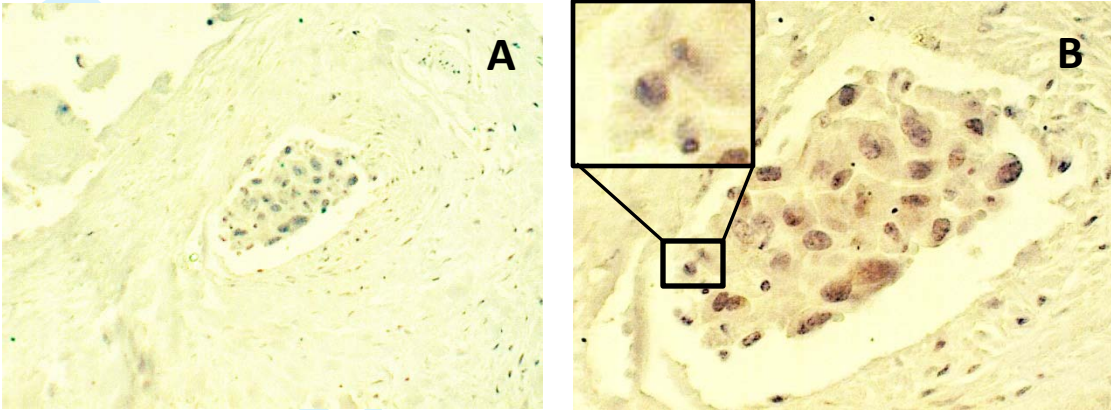


Gut



1  
2  
3  
4  
5  
6  
7  
8  
9  
10  
11  
12  
13  
14  
15  
16  
17  
18  
19  
20  
21  
22  
23  
24  
25  
26  
27  
28  
29  
30  
31  
32  
33  
34  
35  
36  
37  
38  
39  
40  
41  
42  
43  
44  
45  
46  
47  
48  
49  
50  
51  
52  
53  
54  
55  
56  
57  
58

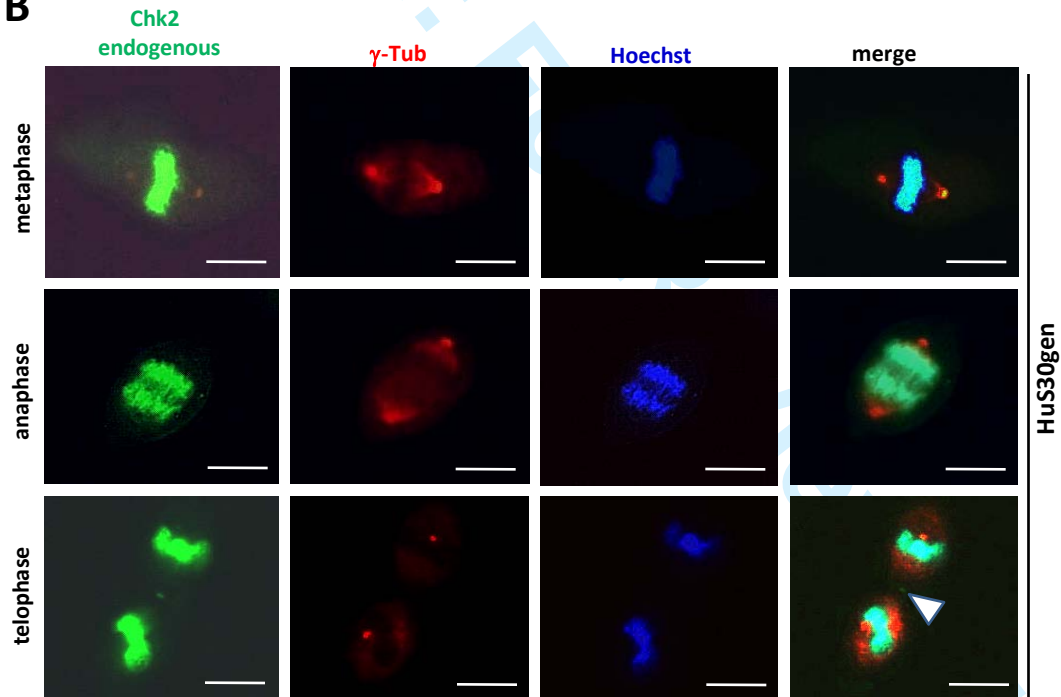
1  
2  
3  
4  
5  
6  
7  
8  
9  
10  
11  
12  
13  
14  
15  
16  
17  
18  
19  
20  
21  
22  
23  
24  
25  
26  
27  
28  
29  
30  
31  
32  
33  
34  
35  
36  
37  
38  
39  
40  
41  
42  
43  
44  
45  
46  
47  
48  
49  
50  
51  
52  
53  
54  
55  
56  
57  
58



A



B



1  
2  
3  
4  
5  
6  
7  
8  
9  
10  
11  
12  
13  
14  
15  
16  
17  
18  
19  
20  
21  
22  
23  
24  
25  
26  
27  
28  
29  
30  
31  
32  
33  
34  
35  
36  
37  
38  
39  
40  
41  
42  
43  
44  
45  
46  
47  
48  
49  
50  
51  
52  
53  
54  
55  
56  
57  
58

