

## Accepted Manuscript

Title: Sustained release ophthalmic dexamethasone: *In vitro in vivo* correlations derived from the PK-Eye

Authors: Sahar Awwad, Richard M. Day, Peng T. Khaw, Steve Brocchini, Hala Fadda



PII: S0378-5173(17)30137-0  
DOI: <http://dx.doi.org/doi:10.1016/j.ijpharm.2017.02.047>  
Reference: IJP 16451

To appear in: *International Journal of Pharmaceutics*

Received date: 2-12-2016  
Revised date: 2-2-2017  
Accepted date: 17-2-2017

Please cite this article as: Awwad, Sahar, Day, Richard M., Khaw, Peng T., Brocchini, Steve, Fadda, Hala, Sustained release ophthalmic dexamethasone: In vitro in vivo correlations derived from the PK-Eye. *International Journal of Pharmaceutics* <http://dx.doi.org/10.1016/j.ijpharm.2017.02.047>

This is a PDF file of an unedited manuscript that has been accepted for publication. As a service to our customers we are providing this early version of the manuscript. The manuscript will undergo copyediting, typesetting, and review of the resulting proof before it is published in its final form. Please note that during the production process errors may be discovered which could affect the content, and all legal disclaimers that apply to the journal pertain.

## Sustained release ophthalmic dexamethasone: *In vitro in vivo* correlations derived from the PK-Eye

Sahar Awwad,<sup>1,2</sup> Richard M. Day,<sup>3</sup> Peng T. Khaw,<sup>1</sup> Steve Brocchini,<sup>1,2\*</sup> and Hala Fadda<sup>4\*</sup>

<sup>1</sup>National Institute for Health Research (NIHR) Biomedical Research Centre at Moorfields Eye Hospital NHS Foundation Trust and UCL Institute of Ophthalmology, London, EC1V 9EL, UK

<sup>2</sup>UCL School of Pharmacy, London, WC1N 1AX, UK

<sup>3</sup>UCL Division of Medicine, London, WC1E 6JJ, UK

<sup>4</sup>Department of Pharmaceutical Sciences, College of Pharmacy and Health Sciences, Butler University, Indianapolis, IN 46208, USA

**Keywords:** ocular drug delivery, pharmacokinetics, in vitro in vivo correlations, sustained release, PLGA

**\*Corresponding authors:** Hala Fadda  
E-mail: [hfadda@butler.edu](mailto:hfadda@butler.edu)  
Tel.: +1-317-940-8574

Steve Brocchini  
[steve.brocchini@ucl.ac.uk](mailto:steve.brocchini@ucl.ac.uk)  
+44-207-753-5802

**Abstract**

Corticosteroids have long been used to treat intraocular inflammation by intravitreal injection. We describe dexamethasone loaded poly-DL-lactide-co-glycolide (PLGA) microparticles that were fabricated by thermally induced phase separation (TIPS). The dexamethasone loaded microparticles were evaluated using a two-compartment, *in vitro* aqueous outflow model of the eye (PK-Eye) that estimates drug clearance time from the back of the eye via aqueous outflow by the anterior route. A dexamethasone dose of  $0.20 \pm 0.02$  mg in a 50  $\mu$ l volume of TIPS microparticles resulted in a clearance  $t_{1/2}$  of  $9.6 \pm 0.3$  days using simulated vitreous in the PK-Eye. Since corticosteroids can also clear through the retina, it is necessary to account for clearance through the back of the eye. Retinal permeability data, published human PK *in vivo* times and the PK-Eye clearance times were then used to establish *in vitro in vivo* correlations (IVIVCs) for intraocular clearance times of corticosteroid formulations. A  $t_{1/2}$  of 48 hours was estimated for the dexamethasone-TIPS microparticles, which is almost 9 times longer than that reported for dexamethasone suspension in humans. The prediction of human clearance times of permeable molecules from the vitreous compartment can be determined by accounting for drug permeation and determining the experimental clearance via the anterior aqueous outflow pathway using the PK-Eye.

## 1. Introduction

Intravitreal (IVT) corticosteroids are routinely used in the treatment of sight threatening conditions in the back of the eye including diabetic macular edema (DME), proliferative vitreoretinopathy, endophthalmitis and uveitis. Administration by IVT injection allows the steroids to bypass the blood-retinal barrier (BRB), leading to higher drug concentrations close to the site of action in the posterior cavity.<sup>1</sup> Common corticosteroids used to treat ophthalmic conditions include dexamethasone, triamcinolone acetonide (TA) and fluocinolone acetonide (FA). Unfortunately, low molecular weight, permeable molecules including corticosteroids that are dissolved in the vitreous rapidly clear from the eye displaying a relatively short  $t_{1/2}$  that is of a matter of hours (i.e. 3-7 hours).<sup>2-5</sup> Frequent IVT injections to maintain therapeutic drug concentrations can increase the risk of serious adverse reactions including retinal detachment, endophthalmitis and vitreous hemorrhage.<sup>6</sup>

Steroid suspensions have long been used clinically in an effort to reduce the number of IVT injections. Triamcinolone acetonide (TA) is available as a preservative-free injectable suspension for intraocular use (Triesence<sup>®</sup>, Alcon). Kenalog<sup>®</sup> is a TA injectable suspension that is indicated for intramuscular and intra-articular administration; and has been used off-label for many years<sup>7-9</sup> for treating both anterior and posterior segment ocular diseases. To further increase the duration of action, long-acting corticosteroid implants<sup>10</sup> are now clinically available.<sup>3,10-15</sup> Corticosteroids<sup>16</sup> are potent, anti-inflammatory agents that are generally stable, poorly soluble and slowly dissolving and so are ideal drug substances for use in longer acting dosage forms. The volume of the vitreous cavity is approximately 4.2 mL, so non-sink conditions can be exploited to prolong the release kinetics of IVT implants of corticosteroids. Ozurdex<sup>®</sup> (Allergan, Inc) is a poly(lactic-co-glycolic acid) (PLGA) implant, which releases dexamethasone (0.7 mg) over a 6-month period.<sup>17</sup>

Formulating a corticosteroid in a PLGA matrix allows better control of drug release compared to the dissolution of a free drug suspension. Interestingly, Ozurdex<sup>®</sup> displays a similar PK profile between vitrectomised and non-vitrectomised eyes<sup>18</sup> whereas suspensions of TA clear more quickly in vitrectomised eyes.<sup>19</sup> However, Ozurdex<sup>®</sup> is a single depot plug, so there is limited flexibility in reducing the duration of action to less than 6-months. Thus, in an effort to exploit the controlled release properties of PLGA for IVT administered dexamethasone with the possibility of varying the dose and duration of action, we describe the preparation of dexamethasone-PLGA microparticles prepared by thermally induced phase separation (TIPS).<sup>20</sup>

TIPS has been used to fabricate porous drug vehicles for applications in chronic wound therapy, drug delivery and tissue engineering.<sup>21</sup> The technique used to produce TIPS microspheres is rapid and provides high encapsulation efficiency generating spherical particles with rigid outer surfaces and longer shelf-life.<sup>22</sup> The encapsulation yield for microspheres containing particulate infliximab was  $60.4 \pm 5.9\%$  compared with  $37.9 \pm 14.4\%$  for microspheres containing an emulsion of infliximab.<sup>21</sup> Degradable polymeric microspheres can enable a prolonged therapeutic concentration to be available while the porous particle surface aids resorption and reduces the likelihood of autocatalysis associated with solid microspheres. PLGA depots are biodegradable which avoids the need for surgical removal from the eye after drug depletion.<sup>23</sup> Porous PLGA microspheres are ideal for drug delivery because the amount of polymer per microsphere is reduced compared with solid microspheres of an equal size.

A two-compartment *in vitro* model of the eye, known as the PK-Eye that predicts human clearance times caused by the aqueous outflow pathway<sup>24</sup> was used to determine drug release kinetics of the dexamethasone TIPS microspheres. Aqueous outflow ( $2.0$  to  $2.5 \mu\text{L}/\text{min}$ )<sup>25–29</sup> is the main cause of mass transfer within the eye. The aqueous nourishes the avascular lens and cornea with outflow passing through the front of the eye. The PK-Eye provides a good estimate of human clearance times from the vitreous cavity for protein therapeutics and non-permeable low molecular weight molecules from suspension and depots.<sup>24</sup> Permeable low molecular weight molecules are eliminated from the vitreous cavity by both aqueous outflow and permeation through the retina via the retinal-choroid-sclera (RCS) pathways. Utilising the PK-Eye to estimate the clearance of low molecular weight, retinal permeable compounds such as steroids requires that we combine *in vitro* outflow clearance data from the PK-Eye, published drug permeability and *in vivo* human data, when available, to develop *in vitro in vivo* correlations (IVIVC). The goal of the work described herein was also to develop IVIVC methodology, which can be used as a surrogate for *in vivo* ocular pharmacokinetic studies during preclinical optimisation to develop sustained release ocular preparations.

## 2. Experimental

### 2.1 Materials and instrumentation

Sodium hyaluronate (solubility:  $5.0 \text{ mg}/\text{mL}$ ;  $1.8 \text{ MDa}$ ) was purchased from Aston Chemicals (Aylesbury, UK) and agar (solubility:  $15.0 \text{ mg}/\text{mL}$ ) was obtained from Fluka Analytical (Gillingham, Dorset, UK). Visking dialysis membrane tubing (molecular weight cut off (MWCO)  $12\text{--}14 \text{ kDa}$ ) was purchased from Medicell

International Ltd. (London, UK). PLGA (75:25, Purasorb PDLG 7507 0.63dL/g) was obtained from Purac Biomaterials (Gorinchem, The Netherlands). Dexamethasone, dimethyl carbonate (DMC >99.9% purity) and dimethylsulphoxide (DMSO) were obtained from Sigma-Aldrich (Poole, UK).

A 16-channel Ismatec peristaltic pump (Michael Smith Engineers Ltd., Woking, Surrey, UK) was used to generate fluid flow into the PK-Eye. For homogenisation, a T8 Ultra-Turrax homogeniser was used (Ike-Werke, Staufen, Germany). Microparticles were fabricated using a Nisco encapsulator Var D unit, fitted with a stainless steel sapphire tipped nozzle with a 150  $\mu\text{m}$  orifice (Nisco Engineering, Zurich, Switzerland). Scanning electron microscopy (SEM) was achieved with a 7401-high resolution Field Emission Scanning Electron Microscope (Jeol, Tokyo, Japan). Lyophilisation was conducted using an Edwards Micro Modulyo freeze dryer (Thermo Fisher Scientific, Asheville, NC). All analyses were undertaken using an Agilent 1200 series HPLC (Agilent Technologies Inc, Santa Clara, CA, USA) equipped with Chemstation software (Agilent) and a reverse phase Synergi Polar-RP C18, 4  $\mu\text{m}$ , 15 cm column (Phenomenex, Macclesfield, UK).

## **2.2 Preparation of the PK-Eye for *in vitro* studies**

### **2.2.1 Design of the model**

The design and use of the *in vitro* PK-Eye model has been previously reported.<sup>24</sup> Briefly, the PK-Eye is fabricated from plastic (polyacrylate) with anterior (~0.2 mL) and posterior (~4.2 mL) cavities integrated within the model. A washer with a Visking dialysis membrane (MWCO 12-14 kDa) separates the two cavities. The direction of flow and the presence of the dialysis membrane only allows solubilised drug to pass from the posterior compartment into the anterior compartment. The PK-Eye model consists of an inlet port in the posterior cavity for continuous aqueous inflow (phosphate buffered saline, PBS pH 7.4) at a rate of 2.0  $\mu\text{L}/\text{min}$  and an outlet port from the anterior cavity for sample collection. An injection port is present in each cavity with a diameter of 2.0-3.0 mm to allow administration of the desired formulation into the model. The model was placed in a pre-heated oil bath at 37°C to conduct release studies at physiological temperature.

### **2.2.2 Preparation of simulated vitreous**

Agar (0.4 g) and hyaluronic acid (HA) (0.5 g) were each separately mixed in 100 mL of stirred hot water.<sup>30</sup> The agar solution was boiled to completely solubilise the agar. After boiling, the hot agar solution was mixed with HA and stirred to give a homogenous mixture to which a few drops of 0.02% sodium azide were added. The solution was left to cool for 24 hours at ambient temperature (~25°C) and formed into

a gel-like consistency. The simulated vitreous was then transferred to the PK-Eye model via the injection port in the posterior cavity. This combination of agar and HA was found to have a dynamic viscosity of  $\sim 0.6$  Pa.s,<sup>24</sup> similar to average human vitreous viscosity,  $\sim 0.5$  Pa.s.<sup>31</sup>

### **2.3 Preparation of dexamethasone-PLGA TIPS microparticles**

PLGA TIPS microparticles were prepared as previously described.<sup>21</sup> A 10% weight solution of PLGA (75:25) in DMC (0.5 g PLGA in 5 mL DMC) was prepared with magnetic stirring. Dexamethasone (20.0 mg) was dissolved in DMSO (100  $\mu$ L) and this solution was added to a solution of PLGA in DMC (5.0 mL, therefore, 0.04 mg dexamethasone per mg of PLGA). The solution was mixed for approximately 10 seconds using a T8 Ultra-Turrax homogeniser.

Polymer solution was fed into the encapsulator unit via a syringe at a flow rate of 1.5 mL/min. The vibration frequency of the nozzle was kept at 1.80 kHz with 70% frequency amplitude. Liquid polymer droplets were collected in a polyethylene beaker containing liquid nitrogen (500 mL). The frozen polymer droplets from the liquid nitrogen were transferred to 50 mL polypropylene containers. Residual DMC solvent in the frozen polymer droplets was removed by lyophilisation for 24 hours. Therefore, 165 mg of TIPS-dexamethasone PLGA particles contained 6.6 mg of dexamethasone. The microparticles used for the experiments were sieved to a size range of 250-425  $\mu$ m and mixed with GranuGEL<sup>®</sup> (1650  $\mu$ L) to produce a paste containing 165 mg dexamethasone-loaded particles (therefore, 100  $\mu$ L of GranuGEL<sup>®</sup> contained 0.4 mg of dexamethasone).

### **2.4 Characterisation of TIPS microparticles**

#### **2.4.1 Scanning electron microscopy (SEM)**

TIPS microparticles were mounted onto aluminium stubs via adhesive carbon tabs, sputter coated with 1-2 nm of gold/palladium alloy for 3 minutes in an argon atmosphere using a high resolution ion beam coater (Gatan Model 681) and viewed by SEM.

#### **2.4.2 Encapsulation and in vitro drug release studies with the PK-Eye**

Equivalent amounts of dexamethasone loaded TIPS microparticles were transferred to 1.0 mL syringes and pressure was applied to the syringe to pack the particles. To obtain dexamethasone loading, the dried, packed dexamethasone TIPS microparticles in 0.05 mL volume were then transferred to a glass vial containing DMSO (2.5 mL) and vortexed until completely dissolved. The solution was then diluted 10 times in PBS, pH 7.4. The mixture was sonicated for 15 minutes and the

resulting solution was filtered using a 0.22  $\mu\text{m}$  filter. Dexamethasone concentration was determined with HPLC (240 nm).

The PK-Eye models were assembled using a fresh Visking membrane for each model. The posterior cavity of the model was filled with the appropriate vitreous substitute (PBS, pH 7.4 or simulated vitreous) and the anterior cavity of the model was filled with PBS. Negative controls were conducted with PK-Eye models with the vitreous substitutes containing no particles.

Dexamethasone is poorly water soluble (0.1 mg/mL), so a dexamethasone suspension was prepared in water (0.2 mg / 50  $\mu\text{L}$ ) to enable direct comparison of the clearance profiles of the suspension and TIPS preparations. Dexamethasone suspension and dry PLGA TIPS microparticles were injected into the posterior cavity of the PK-Eye model. The aqueous outflow was collected from the anterior cavity and was used to determine drug concentrations at different time points. Each sample was filtered using a 0.22  $\mu\text{m}$  filter before HPLC analysis.

#### **2.4.3 Dexamethasone quantification by high performance liquid chromatography (HPLC-UV)**

A wavelength of 240 nm was used to detect dexamethasone. The mobile phase comprised 0.1 % TFA in water and acetonitrile with a gradient of water:acetonitrile changing from 4:1 to 3:7 over 20 min. An injection volume of 10.0  $\mu\text{L}$  and a flow rate of 1.0 mL/min were used. Dexamethasone showed a retention time of 9.3 minutes. The calibration curve ( $R^2$  value of 0.998) was prepared with dexamethasone in PBS, pH 7.4 with a concentration range of 0.39  $\mu\text{g/mL}$  to 100  $\mu\text{g/mL}$ .

#### **2.5 Establishing *in vitro-in vivo* correlations (IVIVC)**

Use of the PK-Eye model to predict the *in vivo* drug clearance from the posterior compartment was performed with suspensions of two model drugs; triamcinolone acetonide (TA) (solubility 25  $\mu\text{g/mL}$ )<sup>24</sup> and dexamethasone (0.1 mg/mL). TA (4.0 mg) displayed constant concentrations (21-30  $\mu\text{g/mL}$ ) in the posterior cavity of the PK-Eye model.<sup>24</sup> *In vivo* drug clearance data from the posterior compartment was obtained from published values obtained from humans.<sup>19</sup> The PK-Eye overestimates the *in vivo* clearance times of small molecular weight drugs due to the lack of the RCS pathway in the model. Therefore, drug permeation data across the RCS pathway was used with anterior aqueous outflow clearance time from the PK-Eye to predict *in vivo* drug clearance. Details are provided in results and discussion.

#### **2.6 Data analysis**

All data reported were conducted in triplicate (n=3) and results are presented as the mean and standard deviation ( $\pm\text{STD}$ ). The data obtained were plotted using



OriginPro 9.1 (software, Origin lab cooperation, USA). Half-life ( $t_{1/2}$ ) values were calculated according to the best fitting model in OriginPro. First-order kinetic rate constants ( $k$ ) were derived from the mono-exponential curve and  $t_{1/2}$  values were calculated using the equation:  $0.693/k$ .

### 3. Results and Discussion

#### 3.1 Characterisation of TIPS microparticles

##### 3.1.1 Scanning electron microscopy (SEM)

Spherical dexamethasone-loaded TIPS microparticles were observed within the sieved size range of 250-425  $\mu\text{m}$ . The surface of the microparticles was smooth, peppered with pores that were generally distributed in chevron-like patterns created by the freezing of the DMC solvent during fabrication process.<sup>32</sup> The pore size at the surface of the microparticles was approximately 0.2 - 1.0  $\mu\text{m}$ . A large pore was visible on the surface of some of the microparticles, which is a typical feature of TIPS microparticles.<sup>32</sup> At higher magnification, amorphous features embedded in the polymer were evenly distributed across the surface of the microparticles, which were likely to consist of dexamethasone since they were not present in unloaded control microparticles.

#### Figure 1

##### 3.1.2 Encapsulation and *in vitro* drug release studies with the PK-Eye

The loading efficiency of the dexamethasone loaded TIPS microparticles was determined prior to evaluation in the PK-Eye. Approximately  $0.20 \pm 0.02$  mg of dexamethasone was present in a volume of 50  $\mu\text{L}$  packed dexamethasone TIPS microparticles following the method listed on section 2.4.2 (Figure S1). The dexamethasone TIPS microparticles were injected into the posterior cavity of the PK-Eye (Figure S2) using a 1.0 mL syringe fitted with a 23G needle.

#### Figures S1-2

Dry dexamethasone TIPS microparticle formulations and dexamethasone suspension (control) were injected at an equivalent dose (0.2 mg) into the posterior cavity of the PK-Eye containing simulated vitreous at 37°C (Table 1 and Figure 2). The dexamethasone collected from the model outflow was quantified by HPLC (240 nm UV absorbance). Dexamethasone TIPS microparticles (0.2 mg) showed a  $t_{1/2}$  of  $9.6 \pm 0.3$  days in simulated vitreous (Figure 2A). The  $C_{\text{max}}$  and lowest concentration of solubilised dexamethasone detected were  $9.3 \pm 0.1$   $\mu\text{g/mL}$  (21 hours) and  $1.0 \pm 0.1$   $\mu\text{g/mL}$  (425 hours) respectively. After 160 hours, a nearly constant concentration of  $1.9 \pm 0.7$   $\mu\text{g/mL}$  of dexamethasone was present from the outflow of the model. By

500 hours (~3 weeks),  $78.8 \pm 1.2$  % of the dexamethasone dose had been released. The average amount of solubilised dexamethasone released from the anterior cavity ranged from ~1.0-3.0  $\mu\text{g/mL}$  from weeks 1 to 3.

In contrast, an equivalent dose of dexamethasone suspension almost completely cleared within 100 hours in simulated vitreous (Figure 2B) from the PK-Eye. The dexamethasone  $C_{\text{max}}$  was 34  $\mu\text{g/mL}$  at 17.6 hours and elimination followed first order kinetics with a  $t_{1/2}$  of  $1.0 \pm 0.1$  days. Similar drug release kinetics was observed when half the dose of the dexamethasone suspension (0.1 mg, 50  $\mu\text{L}$ ) was evaluated in the PK-Eye ( $t_{1/2}$ :  $1.2 \pm 0.03$  days, Table 1).

### Table 1 and Figure 2

Dexamethasone-TIPS microparticles (50  $\mu\text{L}$ ) were then evaluated in the PK-Eye using PBS (pH 7.4) in the posterior cavity (Figure 3) and a  $t_{1/2}$  of  $3.1 \pm 0.2$  days was observed. The  $C_{\text{max}}$  and the lowest concentration of solubilised dexamethasone detected were  $17.7 \pm 8.9$   $\mu\text{g/mL}$  (~21 hours) and  $1.0 \pm 0.2$   $\mu\text{g/mL}$  (~376 hours) respectively. Dexamethasone was still releasing slowly under these conditions with ~99.0  $\pm$  0.4% being released in 3 weeks. A higher burst effect was seen with these particles in PBS compared to simulated vitreous.

The release of dexamethasone in PBS was significantly faster than in simulated vitreous. PLGA undergoes degradation through hydrolysis of its ester linkages to lactic and glycolic acid units, and drug release occurs by both diffusion and erosion. A higher viscosity medium could slow drug diffusion after release from the polymer matrix resulting in longer time periods for the drug to become distributed within the vitreous cavity of the PK-Eye. In contrast, the dexamethasone suspension (0.1 mg, 50  $\mu\text{L}$ ) displayed a  $t_{1/2}$  of  $1.3 \pm 0.1$  days in PBS, which was similar to what was observed in simulated vitreous ( $t_{1/2}$   $1.2 \pm 0.03$  days) (Table 1). Simulating the composition of physiological fluids in drug release studies improves the capacity to determine IVIVCs for modified release delivery systems, as has been observed in oral drug delivery,<sup>33</sup> so the choice of simulated vitreous is important for matrix formulations rather than more simple suspensions that simply dissolve.

### Figure 3

### 3.2 Drug clearance *in vitro-in vivo* correlations (IVIVCs)

*In vitro* release studies of ocular formulations have traditionally been conducted in water baths with constant agitation, dialysis membranes on a shaker stand or using USP 4 flow-through cell dissolution apparatus.<sup>34-36</sup> The drawback with these *in vitro* methods is that they do not mimic the human eye in terms of dimensions, compartmentalisation and aqueous outflow. Ocular aqueous outflow plays a major

role in drug clearance. The PK-Eye was designed to specifically mimic the aqueous outflow from the eye which is critical to estimate the clearance of non-permeable molecules such as therapeutic proteins.<sup>24</sup> The PK-Eye model is also thought to be of value for estimating the dissolution rates of suspensions and the release profiles of implants from the vitreous cavity.

Drug elimination from the vitreous cavity occurs through the RCS pathway and through the anterior hyaloid membrane into the anterior chamber for rapid elimination by aqueous outflow into the conjunctiva. Most low molecular weight drugs are permeable and can clear by both the RCS and anterior routes. Large molecular weight drugs such as proteins, which are also charged molecules, are not RCS permeable, so tend to clear by the anterior outflow route only. Proteins diffuse more slowly in the vitreous liquid compared to low molecular weight drugs and proteins tend to display  $t_{1/2}$  over a period of days (i.e. 5-10 days). Low molecular weight non-permeable drugs that are cleared only through the aqueous route will display a longer  $t_{1/2}$  (15-30 hours) compared to permeable drugs that are cleared by both the anterior and RCS pathways (2-4 hours).<sup>37</sup>

Since the PK-Eye only accounts for the anterior clearance pathway, evaluation of RCS permeable, molecules such as dexamethasone will result in an over estimation of clearance times. Therefore, the clearance times of dexamethasone from the TIPS microparticles is an overestimation. It is necessary to integrate *in vitro* clearance data from the PK-Eye with an estimation of clearance by the RCS pathway by utilising the permeability characteristics of dexamethasone to determine human ocular clearance times. (Kenalog<sup>®</sup>), a TA suspension (40 mg/mL) has long been used clinically, so TA was first used to confirm if the PK-Eye could be used to estimate the human clearance time for a molecule that clears by both the RCS and anterior pathways.

### **3.2.1 Correlating TA clearance from the PK-Eye to human clearance**

Human *in vivo* elimination  $t_{1/2}$  of IVT administered TA suspension (4.0 mg) is about 15.6 days (~374 hours),<sup>19</sup> whereas the *in vitro*  $t_{1/2}$  clearance from the PK-Eye is 26-28 days.<sup>24</sup> The total amount of TA leaving the posterior cavity through aqueous outflow can be estimated from the total inflow volume circulating through the human eye and drug concentration in posterior cavity. With a flow rate of 2.0  $\mu\text{L}/\text{min}$ , the total volume (flow rate  $\times$  time) circulating through the posterior cavity over one drug  $t_{1/2}$  (~374 hours; ~15.6 days)<sup>19</sup> is approximately 44.9 mL. Since TA is injected as a suspension, it is always present in excess in the vitreous compartment and exists at a constant, steady concentration of ~25  $\mu\text{g}/\text{mL}$  which is equivalent to the saturation

solubility of the drug.<sup>24</sup> The amount of drug eliminated from the posterior cavity through only the aqueous outflow over one drug  $t_{1/2}$  is therefore 1.1 mg (44.9 mL × 25 µg/mL) (Table 2).

**Table 2**

Using the vitreal clearance  $t_{1/2}$  of TA in humans (~374 hours), we can estimate the amount of TA leaving the posterior compartment through aqueous outflow permeation through the RCS pathway. Since 4.0 mg of TA was IVT injected *in vivo*, then after one  $t_{1/2}$  the amount of TA cleared from the posterior segment is 2.0 mg. The difference between *in vivo* and *in vitro* drug elimination after one  $t_{1/2}$  is 0.878 mg. Permeability can be determined from Fick's First Law. The concentration gradient across the RCS pathway can be assumed to be constant since sink conditions exist after permeation. The surface area of the RCS was assumed to be equivalent to the surface area of the retinal pigment epithelium (RPE) and taken as 1204 mm<sup>2</sup>.<sup>38</sup> Drug permeability across the RCS pathway was calculated to be  $2.2 \times 10^{-6}$  cm/sec (Equation 1).

$$J = \frac{Q}{SA * t} = P * C \quad \text{Equation 1}$$

where  $J$  is drug flux,  $Q$  is total drug amount clearing from the vitreous (0.878 mg),  $SA$  is surface area of the RCS pathway (1204 mm<sup>2</sup>),  $t$  is  $t_{1/2}$  (374 hrs),  $P$  is drug permeability across the RCS pathway and  $C$  is drug concentration in donor compartment (~25 µg/mL).

There is limited data on drug permeability across human RCS. To our knowledge, the only human permeability data available is that for beta-blockers. A study by Kadam et al. (2011) reported the permeability range for eight beta-blockers across the human scleral choroidal retinal pigment epithelium (SCRPE) to be  $1.34 \times 10^{-6}$  to  $6.03 \times 10^{-6}$  cm/sec.<sup>39</sup> Our value for TA permeability ( $2.2 \times 10^{-6}$  cm/sec) determined from published human *in vivo* clearance data and the PK-Eye model falls within this range and is closest to the beta-blockers with similar lipophilicity. Thus by combining *in vitro* drug clearance data from the PK-Eye model with drug permeability across the RCS pathway, *in vivo* drug elimination  $t_{1/2}$  of small molecules existing in excess amounts in the vitreous chamber can be predicted.

### **3.2.2 Correlating dexamethasone clearance from the PK-Eye to human clearance**

*In vivo* clearance  $t_{1/2}$  of solubilised dexamethasone from the vitreous in humans is reported to be 5.5 hours.<sup>40</sup> At a 0.2 mg dose, the dexamethasone concentration in

the vitreous chamber will be decreasing over time, so the time for the total drug amount ( $Q$ ) to clear via aqueous outflow was calculated using Equation 2 with a time point of 17.6 hrs from the release studies.

$$Q = Flow \int_0^t C \cdot dt \quad \text{Equation 2}$$

Drug clearance was determined at 17.6 hours since this is the time point closest to dexamethasone *in vivo*  $t_{1/2}$  (5.5 hours), for which we have *in vitro* drug concentrations. Thus at 17.6 hrs, the amount of drug that had cleared the vitreous *in vitro*, was determined to be 79.5  $\mu\text{g}$  (Figure 3B). *In vivo*, however, the amount of drug cleared from the vitreous compartment after 3  $t_{1/2}$  (17.6/ 5.5 hours) at an equivalent injection dose of 200  $\mu\text{g}$  is 175  $\mu\text{g}$ . Therefore, the amount of drug cleared due to permeation across the RCS pathway is 95.5  $\mu\text{g}$ . Again, since the drug concentration in the vitreous compartment is changing with time, Equation 3 was used to determine retinal permeability.

$$Q = SA.P. \int_0^t C \cdot dt \quad \text{Equation 3}$$

Retinal permeability of dexamethasone was calculated to be  $3.3 \times 10^{-6}$  cm/sec. A value for RCS permeability of dexamethasone in humans could not be found, however the reported value in porcine is  $2.2 \times 10^{-6}$  cm/sec.<sup>41</sup> This is in close agreement to the value we calculate using the PK-Eye.

### 3.2.3 Prediction of *in vivo* clearance of dexamethasone-TIPS microparticles

Now that we have shown the PK-Eye can provide a good estimate of IVICs, we can use the model to predict the clearance  $t_{1/2}$  of sustained release IVT implants. At 96 hours, the amount of dexamethasone slowly released from the TIPS microparticles and cleared from the PK-Eye by aqueous outflow was determined using Equation 2 to be 68.3  $\mu\text{g}$  (Table 3). Drug permeation across the RCS pathway was determined using Equation 3 to be 98.1  $\mu\text{g}$

**Table 3**

Assuming first order elimination, the predicted human clearance  $t_{1/2}$  of dexamethasone that would be slowly released from the TIPS microparticles was calculated to be 48 hours using Equation 4c (Equation derived from Equations 4a and 4b).

$$\ln A_t = \ln A_0 - kt \quad \text{Equation 4a}$$

$$k = 0.693/t_{1/2} \quad \text{Equation 4b}$$

$$t_{1/2} = \frac{0.693t}{\ln A_0 - \ln A_t} \quad \text{Equation 4c}$$

where  $A_0$  is initial amount of drug in vitreous chamber; 200  $\mu\text{g}$ ,  $A_t$  is drug remaining in vitreous chamber (49.7  $\mu\text{g}$ ) and  $t$  is time (96 hrs).

The predicted  $t_{1/2}$  of dexamethasone TIPS microparticles (0.2 mg dexamethasone dose) is almost 9 times longer than that of an equivalent dose of dexamethasone suspension. A dexamethasone TIPS microparticle formulation would be expected to require less frequent IVT injection than a dexamethasone suspension. Dexamethasone TIPS microparticles are designed to provide sustained drug release for an intermediate period of time compared to the dexamethasone Ozurdex<sup>®</sup> implant. Dexamethasone TIPS microparticles thus offer a potential treatment choice for acute ocular conditions of the posterior segment that would require steroid treatment over a period not lasting more than a month.

Integrating drug permeation across the RCS pathway with anterior aqueous outflow from the PK-Eye can be used as a strategy to predict *in vivo* drug clearance of suspensions and implants from the vitreous compartment. Once a permeable, low-molecular weight molecule is solubilised in the vitreous, clearance would be expected to be relatively quick. Our model can be used with other *in vitro* or computational permeability models to develop IVIVCs that include RCS clearance pathways. This is analogous to strategies that are used to develop new dosage forms for oral and pulmonary administration. This can provide useful information when developing novel ocular implants with respect to determination of drug loading, selection of excipients and formulation optimisation.

The need for animal studies will be reduced thus accelerating the development of novel ocular formulations for treating diseases of the posterior segment. The PK-Eye model may also be particularly useful for longer term studies, especially if long acting formulations of protein-based drugs are being evaluated where anti-drug antibodies (ADAs) would be expected to develop in animal models. The PK-Eye estimates the human clearance times of protein therapeutics effectively because these charged, large molecular weight drugs are not permeable and clear predominantly via aqueous outflow through the anterior chamber.<sup>24</sup> The development of effective long-acting formulations of proteins is one of the most important issues in ocular drug delivery today. In addition, the ability to accurately titrate duration of action is important as some drugs such as dexamethasone may have significant side

effects in the long term such as an intractable rise in intraocular pressure if delivered to the eye for too long a duration.

Quality control efforts can be facilitated and surrogates for bioequivalence studies can be developed for generic drug product approval. Little has been published about drug metabolism in the vitreous cavity, so practical strategies using the PK-Eye to better account for metabolism in the vitreous may need to be developed for some drugs. While estimation of the overall clearance time is important for preclinical development, integration of our results with advanced *in silico* models to encompass drug distribution, metabolism and permeability across different pathways will add further insight to the fate of drugs from long acting formulations developed for the eye.

#### **4. Conclusions**

In this study, biodegradable dexamethasone loaded PLGA TIPS microparticles were fabricated as a sustained intraocular dexamethasone formulation. Using the PK-Eye which measures drug clearance by the aqueous outflow pathway, the TIPS-dexamethasone formulation displayed prolonged drug release compared to free dexamethasone at an equivalent dose of 2.0 mg. We combined the drug clearance time from the PK-Eye with RCS permeation data to provide a predictive estimate of human *in vivo* clearance for drugs that clear both anteriorly and posteriorly from the eye. The human *in vivo*  $t_{1/2}$  of IVT dexamethasone TIPS microparticles is predicted to be 48 hours; almost 9 times longer than dexamethasone. TIPS microparticles have the potential to provide sustained dexamethasone release of intermediate duration that may be useful where prolonged, but not over extended release of drugs such as dexamethasone may be required. The prediction of human clearance times of permeable molecules from the vitreous compartment can be determined by accounting for drug permeation and determining the experimental clearance via the anterior aqueous outflow pathway using the PK-Eye.

#### **Acknowledgements:**

We are grateful for funding from the National Institute of Health Research (NIHR) Biomedical Research Centre at Moorfields Eye Hospital NHS Foundation Trust and UCL Institute of Ophthalmology, Moorfields Special Trustees, the Helen Hamlyn Trust (in memory of Paul Hamlyn), Medical Research Council, Fight for Sight and the Michael and Ilse Katz foundation. S.A. also gratefully acknowledges funding from the UCL Overseas Research Student Fund. R.M.D is grateful for the grants from the UCL Comprehensive Biomedical Research Centre. The research was also

undertaken at UCL/UCLH which receives funding from the Department of Health's NIHR as a Comprehensive Biomedical Research Centre.



## References

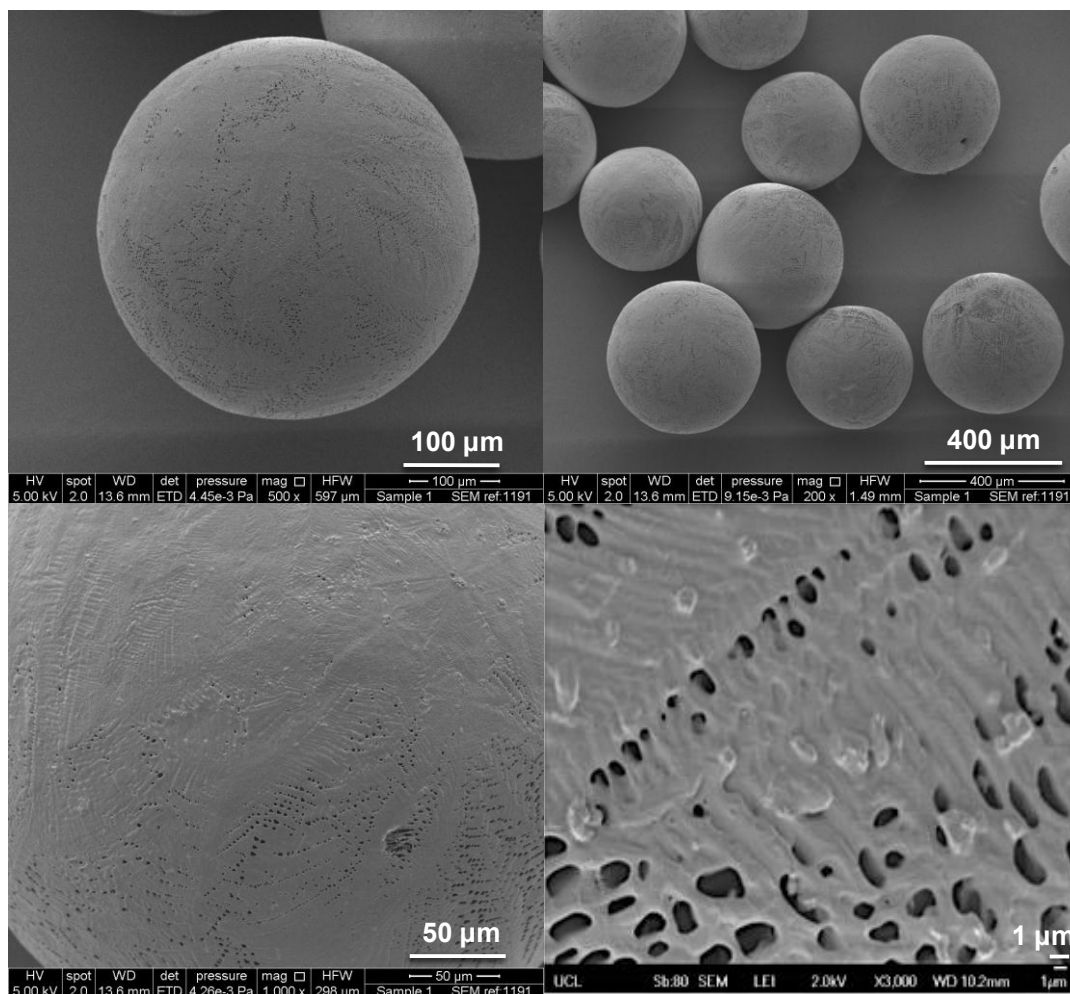
1. Cunningham MA, Edelman JL, Kaushal S. Intravitreal steroids for macular edema: the past, the present, and the future. *Surv Ophthalmol.* 2008;53(2):139-149. doi:10.1016/j.survophthal.2007.12.005.
2. Haghjoui N, Abdekhodaie MJ, Cheng Y-L. Retina-choroid-sclera permeability for ophthalmic drugs in the vitreous to blood direction: quantitative assessment. *Pharm Res.* 2013;30(1):41-59. doi:10.1007/s11095-012-0847-9.
3. Thrimawithana T, Young S, Bunt C. Drug delivery to the posterior segment of the eye. *Drug Discov Today.* 2011;16(5-6):270-277. doi:10.1016/j.drudis.2010.12.004.
4. Kwak HW, Amico DJD. Evaluation of the Retinal Toxicity and Pharmacokinetics of Dexamethasone After Intravitreal Injection. *Arch Ophthalmol.* 1992;110:259-266.
5. Laude A, Tan LE, Wilson CG, et al. Intravitreal therapy for neovascular age-related macular degeneration and inter-individual variations in vitreous pharmacokinetics. *Prog Retin Eye Res.* 2010;29(6):466-475. doi:10.1016/j.preteyeres.2010.04.003.
6. Lee SS, Hughes P, Ross AD, Robinson MR. Biodegradable implants for sustained drug release in the eye. *Pharm Res.* 2010;27(10):2043-2053. doi:10.1007/s11095-010-0159-x.
7. Cabrera M, Yeh S, Albin T a. Sustained-Release Corticosteroid Options. *J Ophthalmol.* 2014;2014:1-5. doi:10.1155/2014/164692.
8. Jermak CM, Dellacroce JT, Heffez J, Peyman GA. Triamcinolone Acetonide in Ocular Therapeutics. *Surv Ophthalmol.* 2007;52(5):503-522. doi:10.1016/j.survophthal.2007.06.004.
9. Behl CR, Block LH, Borke ML. Aqueous Solubility of 14C-Triamcinolone Acetonide. *J Pharm Sci.* 1976;65(3):429-430. doi:10.1002/jps.2600650329.
10. Choonara YE, Pillay V, Danckwerts MP, Carmichael TR, du Toit LC. A review of implantable intravitreal drug delivery technologies for the treatment of posterior segment eye diseases. *J Pharm Sci.* 2010;99(5):2219-2239. doi:10.1002/jps.21987.
11. Thakur SS, Barnett NL, Donaldson MJ, Parekh HS. Intravitreal drug delivery in retinal disease: are we out of our depth? *Expert Opin Drug Deliv.* 2014;11(10):1575-1590. doi:10.1517/17425247.2014.927864.
12. Basile AS, Hutmacher M, Nickens D. Population Pharmacokinetics of Pegaptanib in Patients With Neovascular, Age-Related Macular Degeneration. *J Clin Pharmacol.* 2012;52:1186-1199. doi:10.1177/0091270011412961.
13. Package insert prescribing information. *Pegaptanib sodium Inject NDA-21-756/S-018 Ref ID 3026883.* 2011.
14. Basile AS, Johnson TR, Klamerus KJ, et al. Integrating disease progression models, non-clinical pharmacokinetic data and treatment response endpoints to optimize intravitreal dosing regimens. *Int J Clin Pharmacol Ther.* 2014;52(7):574-586. doi:10.5414/CP201998.
15. Christoforidis JB, Chang S, Jiang A, Wang J, Cebulla CM. Intravitreal devices for the treatment of vitreous inflammation. *Mediators Inflamm.* 2012;2012:126463. doi:10.1155/2012/126463.
16. Cima MJ, Lee H, Daniel K, et al. Single compartment drug delivery. *J Control Release.* 2014;190:157-171. doi:10.1016/j.jconrel.2014.04.049.
17. Medeiros MD, Alkabes M, Navarro R, Garcia-Arumí J, Mateo C, Corcóstegui B. Dexamethasone intravitreal implant in vitrectomized versus nonvitrectomized eyes for treatment of patients with persistent diabetic macular edema. *J Ocul Pharmacol Ther.* 2014;30(9):709-716. doi:10.1089/jop.2014.0010.
18. Chang-Lin J-E, Burke J a, Peng Q, et al. Pharmacokinetics of a sustained-release dexamethasone intravitreal implant in vitrectomized and nonvitrectomized eyes. *Invest Ophthalmol Vis Sci.* 2011;52(7):4605-4609. doi:10.1167/iovs.10-6387.
19. Beer PM, Bakri SJ, Singh RJ, Liu W, Peters GB, Miller M. Intraocular concentration and pharmacokinetics of triamcinolone acetonide after a single intravitreal injection. *Am Acad Ophthalmol.* 2003;110(4):681-686. doi:10.1016/S0161-6420(02)01969-3.
20. Ghanbar H, Luo CJ, Bakhshi P, Day R, Edirisinghe M. Preparation of porous microsphere-scaffolds by electrohydrodynamic forming and thermally induced phase separation. *Mater Sci Eng C.* 2013;33(5):2488-2498. doi:10.1016/j.msec.2012.12.098.
21. Foong KS, Patel R, Forbes A, Day RM. Anti-tumor necrosis factor-alpha-loaded microspheres as a prospective novel treatment for Crohn's disease fistulae. *Tissue*

- Eng.* 2010;16(5):855-864. doi:10.1089/ten.tec.2009.0599.
22. Malik SA, Ng WH, Bowen J, et al. Electrospray synthesis and properties of hierarchically structured PLGA TIPS microspheres for use as controlled release technologies. *J Colloid Interface Sci.* 2016;467:220-229. doi:10.1016/j.jcis.2016.01.021.
  23. Yandrapu S, Kompella UB. Development of sustained-release microspheres for the delivery of SAR 1118, an LFA-1 antagonist intended for the treatment of vascular complications of the eye. *J Ocul Pharmacol Ther.* 2013;29(2):236-248. doi:10.1089/jop.2012.0210.
  24. Awwad S, Lockwood A, Brocchini S, Khaw PT. The PK-Eye: A Novel *In Vitro* Ocular Flow Model for Use in Preclinical Drug Development. *J Pharm Sci.* 2015;104(10):3330-3342. doi:10.1002/jps.24480.
  25. Brubaker RF. The flow of aqueous humor in the human eye. *Trans Am Ophthalmol Soc.* 1982;80:391-474. <http://www.ncbi.nlm.nih.gov/pubmed/14769595>.
  26. Toris CB, Yablonski ME, Wang YL, Camras CB. Aqueous humor dynamics in the aging human eye. *Am J Ophthalmol.* 1999;127(4):407-412. <http://www.ncbi.nlm.nih.gov/pubmed/11858615>.
  27. Maurice D. Review: practical issues in intravitreal drug delivery. *J Ocul Pharmacol.* 2001;17(4):393-401.
  28. Siggers JH, Ethier CR. Fluid Mechanics of the Eye. *Annu Rev Fluid Mech.* 2012;44:347-372. doi:10.1146/annurev-fluid-120710-101058.
  29. Ethier CR, Johnson M, Ruberti J. Ocular biomechanics and biotransport. *Annu Rev Biomed Eng.* 2004;6:249-273. doi:10.1146/annurev.bioeng.6.040803.140055.
  30. Kummer MP, Abbott JJ, Dinser S, Nelson BJ. Artificial vitreous humor for in vitro experiments. *Conf Proc Int Conf IEEE Eng Med Biol Soc.* 2007;2007:6407-6410. <http://www.ncbi.nlm.nih.gov/pubmed/18003488>.
  31. Soman N, Banerjee R. Artificial vitreous replacements. *Biomed Mater Eng.* 2003;13:59-74.
  32. Blaker JJ, Knowles JC, Day RM. Novel fabrication techniques to produce microspheres by thermally induced phase separation for tissue engineering and drug delivery. *Acta Biomater.* 2008;4(2):264-272. doi:10.1016/j.actbio.2007.09.011.
  33. Fadda HM, Merchant HA, Arafat BT, Basit AW. Physiological bicarbonate buffers: stabilisation and use as dissolution media for modified release systems. *Int J Pharm.* 2009;382(1-2):56-60. doi:10.1016/j.ijpharm.2009.08.003.
  34. Barcia E, Herrero-Vanrell R, Díez A, Alvarez-Santiago C, López I, Calonge M. Downregulation of endotoxin-induced uveitis by intravitreal injection of polylactic-glycolic acid (PLGA) microspheres loaded with dexamethasone. *Exp Eye Res.* 2009;89(2):238-245. doi:10.1016/j.exer.2009.03.012.
  35. Zhang L, Li Y, Zhang C, Wang Y, Song C. Pharmacokinetics and tolerance study of intravitreal injection of dexamethasone-loaded nanoparticles in rabbits. *Int J Nanomedicine.* 2009;4:175-183. <http://www.ncbi.nlm.nih.gov/pmc/articles/PMC2747352/>.
  36. Chennamaneni SR, Mamalis C, Archer B, Oakey Z, Ambati BK. Development of a novel bioerodible dexamethasone implant for uveitis and postoperative cataract inflammation. *J Control Release.* 2013;167(1):53-59. doi:10.1016/j.jconrel.2013.01.007.
  37. Haghjou N, Abdekhodaie MJ, Cheng Y-L. Retina-choroid-sclera permeability for ophthalmic drugs in the vitreous to blood direction: quantitative assessment. *Pharm Res.* 2013;30(1):41-59. doi:10.1007/s11095-012-0847-9.
  38. del Amo EM, Urtti A. Rabbit as an animal model for intravitreal pharmacokinetics: Clinical predictability and quality of the published data. *Exp Eye Res.* 2015;137:111-124. doi:10.1016/j.exer.2015.05.003.
  39. Kadam RS, Cheruvu NPS, Edelhauser HF, Kompella UB. Sclera-choroid-RPE transport of eight ??-blockers in human, bovine, porcine, rabbit, and rat models. *Investig Ophthalmol Vis Sci.* 2011;52(8):5387-5399. doi:10.1167/iovs.10-6233.
  40. Gan IM, Ugahary LC, van Dissel JT, van Meurs JC. Effect of intravitreal dexamethasone on vitreous vancomycin concentrations in patients with suspected postoperative bacterial endophthalmitis. *Graefe's Arch Clin Exp Ophthalmol.* 2005;243(11):1186-1189. doi:10.1007/s00417-005-1182-1.
  41. Loch C, Zakelj S, Kristl A, et al. Determination of permeability coefficients of

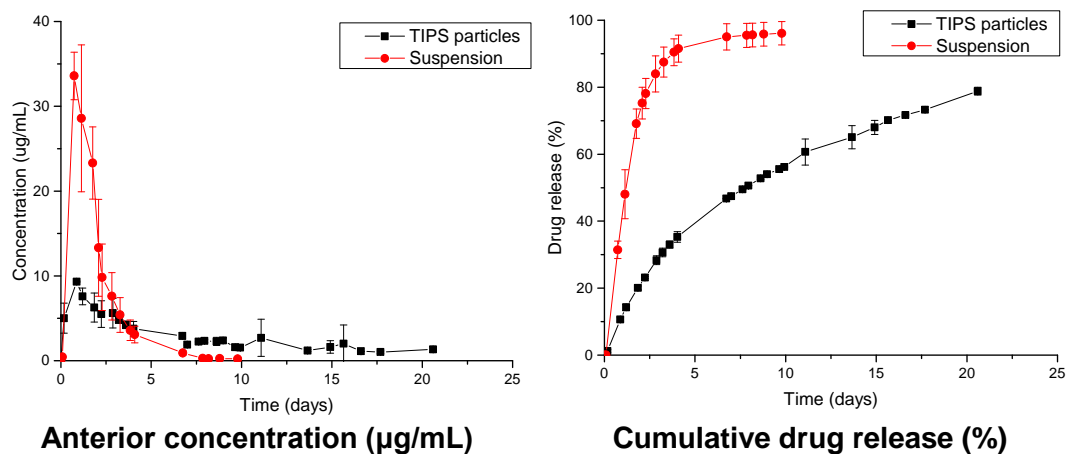
ophthalmic drugs through different layers of porcine, rabbit and bovine eyes. *Eur J Pharm Sci.* 2012;47(1):131-138. doi:10.1016/j.ejps.2012.05.007.

**Figures**

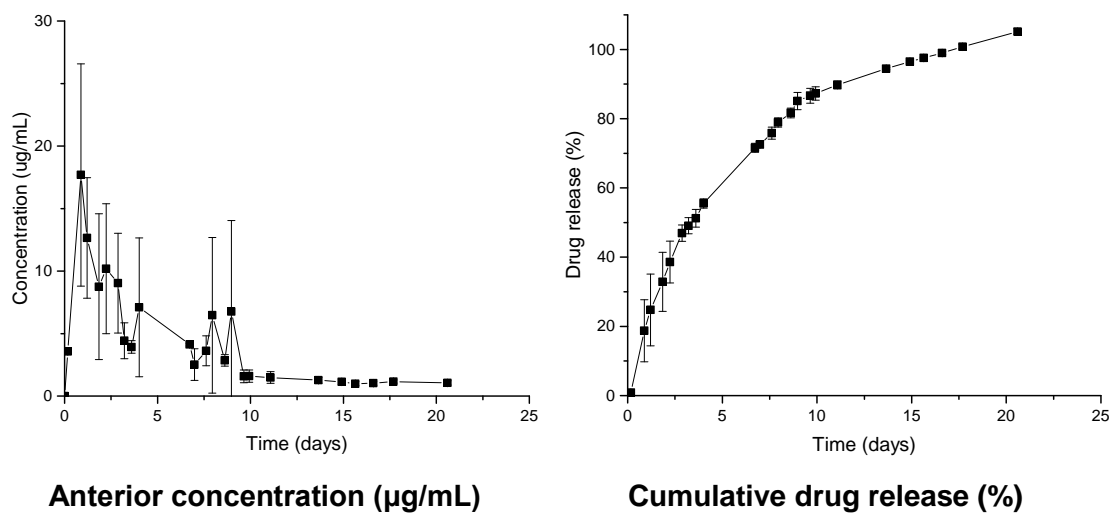
**Figure 1.** Scanning electron microscopy (SEM) images of dexamethasone loaded TIPS microparticles. The particles were spherical and the pore size was approximately 1.0  $\mu\text{m}$  in size.



**Figure 2.** Release profiles of dexamethasone TIPS microparticles (0.2 mg, 50  $\mu$ L) and dexamethasone suspension (0.2 mg, 50  $\mu$ L) in the PK-Eye containing simulated vitreous in the posterior cavity at 37°C. The dexamethasone dose was not solubility limited and the clearance half-lives ( $t_{1/2}$ ) were  $9.6 \pm 0.3$  and  $1.0 \pm 0.1$  days for the TIPS microparticles and suspension respectively. All results are displayed as the average of the triplicate ( $n=3$ ) and its standard deviation ( $\pm$ STD).



**Figure 3.** Release profile of dexamethasone TIPS microparticles (0.2 mg, 50  $\mu$ L) in the PK-Eye containing PBS, pH 7.4 in the posterior cavity at 37°C. The  $t_{1/2}$  was  $3.1 \pm 0.2$  days. All results are displayed as the average of the triplicate (n=3) and its standard deviation ( $\pm$ STD).



## Tables

**Table 1:** Summary of dexamethasone suspension and TIPS microparticles release kinetics in the PK-Eye at 37°C.

Type	Injected		Vitreous substitute	Rate constant, $k$ (day <sup>-1</sup> )	Half-life, $t_{1/2}$ (days)
	Mass (mg)	Volume ( $\mu$ L)			
Suspension	0.1	50	PBS, pH 7.4	$0.54 \pm 0.04$	$1.3 \pm 0.1$
	0.1	50	Simulated vitreous	$0.60 \pm 0.02$	$1.2 \pm 0.03$
	0.2	50	Simulated vitreous	$0.70 \pm 0.07$	$1.0 \pm 0.1$
TIPS	0.2	50	PBS, pH 7.4	$0.22 \pm 0.01$	$3.1 \pm 0.2$
	0.2	50	Simulated vitreous	$0.07 \pm 0.002$	$9.6 \pm 0.3$

**Table 2:** Development of *in vitro in vivo* correlation (IVIVC) with triamcinolone acetonide (TA, Kenalog<sup>®</sup>, 40 mg/mL)

<b>Parameters</b>	<b><i>In vitro</i></b>	<b><i>In vivo</i></b>
Dose of TA (mg)	4.0	4.0
$t_{1/2}$ (days)	28 <sup>24</sup>	15.6 <sup>19</sup>
Value for 1 $t_{1/2}$ (hours)	674	374
Concentration of TA in the PK-Eye ( $\mu\text{g/mL}$ )	~ 25	-
Amount of drug eliminated after 1 $t_{1/2}$ (mg)	1.1	2.0
Difference between <i>in vitro</i> and <i>in vivo</i> clearance: 0.878 mg		

**Abbreviations:** mg: milligrams; mL: millilitres,  $t_{1/2}$ : half-life  $\mu\text{g}$ : micrograms



**Table 3:** Prediction of ocular *in vivo*  $t_{1/2}$  of dexamethasone-TIPS microparticles

Parameters	Values
Dose of dexamethasone ( $\mu\text{g}$ )	200
Drug permeability across the RCS pathway (cm/sec)	$3.3 \times 10^{-6}$
Surface area of RCS ( $\text{mm}^2$ ) <sup>38</sup>	1204
Flow rate of aqueous outflow ( $\mu\text{L}/\text{min}$ )	2.0
Drug eliminated from the PK-Eye (attributable to aqueous outflow) ( $\mu\text{g}$ )	68.3
Drug permeation across RCS pathway ( $\mu\text{g}$ )	82.0
Total drug cleared from the vitreous chamber (aqueous outflow and permeability) ( $\mu\text{g}$ )	150.3

**Abbreviations:** RCS: retina-choroid sclera. **Note:** Drug elimination and permeation was determined at 96.4 hrs

