

Effects of tDCS on motor learning and memory formation: a consensus and critical position paper

Authors:

Ethan R Buch
Emiliano Santarnecchi
Andrea Antal
Jan Born
Pablo A Celnik
Joseph Classen
Christian Gerloff
Mark Hallett
Eric M Wassermann
Friedhelm C Hummel
Michael A Nitsche
Walter J Paulus
Janine Reis
Edwin M Robertson
John C Rothwell
Marco Sandrini
Heidi M Schambra
Ulf Ziemann
Alvaro Pascual-Leone
Leonardo G Cohen

Affiliations:

Human Cortical Physiology and Neurorehabilitation Section, National Institute of Neurological Disorders and Stroke, National Institutes of Health, Bethesda, MD, USA

Department of Medicine, Surgery and Neuroscience, Neurology and Clinical Neurophysiology Section, Brain Investigation & Neuromodulation Lab, University of Siena, Siena, Italy

Berenson-Allen Center for Non-Invasive Brain Stimulation, Department of Cognitive Neurology, Beth Israel Medical Center, Harvard Medical School, Boston, MA, USA

Department of Physical Medicine and Rehabilitation, Johns Hopkins Medical Institution, Baltimore, MD, USA

Department of Neuroscience, Johns Hopkins Medical Institution, Baltimore, MD, USA

Department of Neurology, Albert Ludwigs University, Freiburg, Germany

Brain Imaging and NeuroStimulation (BINS) Laboratory, Department of Neurology University Medical Center Hamburg-Eppendorf Martinistr, Hamburg, Germany

Behavioral Neurology Unit, National Institute of Neurological Disorders and Stroke, National Institutes of Health, Bethesda, MD, USA

Institute of Neuroscience and Psychology, Glasgow, UK

Human Motor Control Section, National Institute of Neurological Disorders and Stroke, Bethesda, MD, USA

UCL Institute of Neurology, Queen Square, London, UK

Department of Neurology, University of Leipzig, Leipzig, Germany

Department of Neurology & Stroke, and Hertie Institute for Clinical Brain Research, Eberhard Karls University, Tübingen, Germany

Institute for Medical Psychology and Behavioral Neurobiology, University of Tübingen, Tübingen, Germany

Centre for Integrative Neuroscience, University of Tübingen, Tübingen, Germany

Department of Psychology and Neuroscience, Leibniz Research Center for Working Environment and Human Factors (IfADo), Dortmund, Germany

Department of Neurology, University Medical Hospital Bergmannsheil, Bochum, Germany

Department of Clinical Neurophysiology, University Medical Center, Georg-August University, Göttingen, Germany

Department of Psychology, University of Roehampton, London, UK

Department of Rehabilitation and Regenerative Medicine, Columbia University, New York, NY, USA

Abstract

Motor skills are required for activities of daily living. Transcranial direct current stimulation (tDCS) applied in association with motor skill learning has been investigated as a tool for enhancing training effects in health and disease. Here, we review the published literature investigating whether tDCS can facilitate the acquisition and retention of motor skills and adaptation. A majority of reports focused on the application of anodal tDCS over the primary motor cortex (M1) during motor skill acquisition, while some evaluated tDCS applied over the cerebellum during adaptation of existing motor skills. Work in multiple laboratories is under way to develop a mechanistic understanding of tDCS effects on different forms of learning, and to optimize stimulation protocols. Efforts are required to improve reproducibility and standardization. Overall, reproducibility remains to be fully tested, effect sizes with present techniques are moderate (up to $d=0.5$) (Hashemirad, Zoghi, Fitzgerald, & Jaberzadeh, 2016) and the basis of inter-individual variability in tDCS effects is incompletely understood. It is recommended that future studies explicitly state in the Methods the exploratory (hypothesis-generating) or hypothesis-driven (confirmatory) nature of the experimental designs. General research practices could be improved with prospective pre-registration of hypothesis-based investigations, more emphasis on detailed description of methods and use of post-publication open data repositories. A checklist is proposed for reporting tDCS investigations in a way that can improve efforts to assess reproducibility.

Introduction

Noninvasive brain stimulation (NIBS), most commonly repetitive transcranial magnetic stimulation (rTMS) and transcranial direct current stimulation (tDCS), have been used to modulate motor and cognitive functions in human subjects (Brunoni et al., 2012; Bütetfisch, Khurana, Kopylev, & Cohen, 2004; Duque et al., 2007; Jahanshahi & Rothwell, 2000; Marshall, Helgadottir, Molle, & Born, 2006; Perceval, Floel, & Meinzer, 2016; Wassermann, Tormos, & Pascual-Leone, 1998) (Figure 1)^a. It has been argued that rTMS and tDCS can either enhance or decrease excitability in targeted cortical regions depending on the parameters of stimulation employed (Chen et al., 1997; Galea, Jayaram, Ajagbe, & Celnik, 2009; Labruna et al., 2016; Woods et al., 2016) and the underlying intrinsic state of the stimulated brain networks (Dayan, Censor, Buch, Sandrini, & Cohen, 2013; Sandrini, Umiltà, & Rusconi, 2011).

tDCS has also been used as a tool to gain insight into brain-behavior interactions and to explore possible causal relationships between altered activity in relatively large regions of the brain and particular behaviors (Nitsche et al., 2008). More specifically, tDCS has been used to study effects on, and mechanisms of, motor learning (Antal et al., 2004; Galea, Vazquez, Pasricha, Orban De Xivry, & Celnik, 2011; Nitsche et al., 2003; Reis et al., 2009). In a previous consensus document, it was stated that “*Improved understanding of the involvement of a brain region in a type of behavior was followed by attempts to modify activity ... to secondarily influence performance, learning and memory functions*” (Reis et al., 2008). Several recommendations from that paper have been advanced in the literature. For example, many studies have utilized multi-session rather than single-session tDCS application (Hashemirad et al., 2016), greater emphasis has been placed on monitoring long-term effects of tDCS on motor learning (Hashemirad et al., 2016), evidence of dissociation of tDCS effects applied to distinct brain regions on different stages

of motor learning (Galea et al., 2011; Reis et al., 2015; Wymbs, Bastian, & Celnik, 2016) has begun to emerge, and mechanisms underlying tDCS effects are starting to be elucidated (Fritsch et al., 2010; H. I. Kuo et al., 2013; M. F. Kuo et al., 2008; Lang, Nitsche, Sommer, Tergau, & Paulus, 2003; Stagg, Bachtiar, & Johansen-Berg, 2011). Below, we summarize results from tDCS studies aiming to improve motor learning in healthy humans without performing a critical review of each individual investigation, discuss new challenges and limitations to be considered, and propose strategies to move forward.

Motor learning

The acquisition and retention of new motor skills, and adaptation of previously learned ones are fundamental to our daily lives (Debas et al., 2010). Commonly used skills such as typing or playing a musical instrument are acquired and improved through years of repetitive practice (Dayan & Cohen, 2011). This process remains adaptive throughout the lifespan, as the interaction between intrinsic (e.g. – body morphology, muscle strength, injury, etc.) and extrinsic (e.g. – tools, task constraints) factors require continuous updating of how we interact with an often changing environment (Wolpert, Diedrichsen, & Flanagan, 2011) undergoing consolidation (Muellbacher et al., 2002) and reconsolidation (Censor, Sagi, & Cohen, 2012). In the laboratory, motor learning is commonly explored using paradigms focusing on the acquisition and retention of new motor skills, or the adaptation of existing ones to environmental disruptions. Motor skill learning is typically achieved slowly with prolonged training, resulting in slow performance gains underpinned by an improved speed-accuracy relationship and/or a reduction in performance variability (Shmuelof, Krakauer, & Mazzoni, 2012). Conversely, motor adaptation is typically achieved over brief training periods, where performance levels are restored to prior maximums following exposure to an environmental perturbation (Shmuelof et al., 2012). Here, we focus on these most commonly studied types of motor learning, as both have been used as the substrate for neuromodulation. However, it should be kept in mind that the categorization of skill learning and adaptation is applied rather broadly and may engage error-dependent, use-dependent, reinforcement, and/or strategic learning to different extents (Krakauer & Mazzoni, 2011) with shared or independent underlying mechanisms.

From a behavioral standpoint, motor skill learning can be deconstructed into several component features that occur over different timespans. Learning is initiated by experience that is accrued over one or more practice or training periods (Dayan & Cohen, 2011). Performance improvements that occur over shorter time periods, such as within a single training session or day, are typically referred to as online learning (Reis et al., 2009). Over longer periods of time, such as over several hours, days or training sessions, motor memories may transition to a consolidation phase (Gais et al., 2007; Marshall & Born, 2007; Stickgold, 2005; Walker, Brakefield, Hobson, & Stickgold, 2003). Behavioral expressions of consolidation may include: (1) a greater resistance to interference caused by other learned skills (i.e. – stability) (Krakauer & Shadmehr, 2006); (2) observed performance improvements at re-test in the absence of additional practice (i.e. – offline gains) (Reis et al., 2009); or (3) reductions in performance decrements experienced with the passage of time (i.e. – retention) (Abe et al., 2011).

Even once acquired motor skills are consolidated and retained as stable, long-term motor memories they must maintain some capacity to be flexible and responsive to unpredictable biological or environmental changes that may occur in the future (Sandrini, Cohen, & Censor, 2015). Each time a given skill is executed, retrieval of these previously consolidated motor memories may initiate a cascade of plasticity mechanisms that enable their composition to be modified in order to maintain skill performance optimization over the long term (Censor, Buch, Nader, & Cohen, 2015; Censor, Dayan, & Cohen, 2014; Censor, Dimyan, & Cohen, 2010; Censor, Horovitz, & Cohen, 2014; Dayan, Laor-Maayany, & Censor, 2016; Wymbs et al., 2016). It has been reported that existing motor memories can be modified through reconsolidation, which may repeat as needed across the lifespan (Censor, Horovitz, et al., 2014; Sandrini, Censor, Mishoe, & Cohen, 2013; Wymbs et al., 2016).

Measuring motor skill learning is not a trivial task. Most motor skills require the optimization of a speed-accuracy trade-off dependent upon specific task constraints. One approach to estimating learning is to reduce this feature to a single dimension by instructing participants to favor one factor over the other, or employing strict accuracy- or speed-related task requirements. An alternative approach is to use more neutral instructions or employ tasks that allow for natural variation of this interaction across the study population. In this case, the speed-accuracy trade-off is then explicitly modeled in performance or skill learning estimates. Another crucial factor in the experimental study of motor learning is the information participants have access to about the task and their performance. The specific nature and resolution of information available to participants will determine if learning is driven by factors such as sensory feedback error signals, cognitive strategies, or reward maximization. Thus, variants of the same basic task may assess very different learning processes. This may be particularly important for a technique like tDCS (which may exert its effect through the alteration of thresholds for neuronal discharge (Fritsch et al., 2010)) as observed effects may be highly dependent on the specific context in which it is applied.

Currently, the most frequently used tasks to investigate motor skill learning in experimental settings are: (1) sequential finger tapping tasks (SFTT; which can include either implicit or explicit sequence structure) (Ghilardi, Moisello, Silvestri, Ghez, & Krakauer, 2009; Nitsche et al., 2010; Reis et al., 2015; Song & Cohen, 2014); and (2) the sequential visual isometric pinch force task (SVIPT) (Reis et al., 2009). In a sense, these tasks are complimentary in that for the SFTT, the main unit of action is rather trivial for a healthy subject to accomplish (i.e. – pressing a keyboard key or button), while the required sequence of actions are typically complex in structure (between 8-15 items in length with controls on smaller intra-sequence patterns). Alternatively, the SVIPT requires execution of a precision pinch force action that is more difficult to elicit than a key-press (Waters-Metenier, Husain, Wiestler, & Diedrichsen, 2014). Thus, there is a greater emphasis placed upon accurate performance of the unit action within an explicit sequence context in the SVIPT than most variants of SFTTs. An advantage of these learning tasks in general is that their complexity can be manipulated in a manner conducive to studying learning over long time periods (i.e. – months and years). Furthermore, competing sequences can be used to investigate consolidation and re-consolidation processes, as well.

Adaptation of highly-learned, target-directed pointing or shooting movements to environment perturbations has been regularly investigated (Orban de Xivry & Shadmehr, 2014). In this case, visual or proprioceptive feedback of generated movements is manipulated to produce

a large error between motor plan and sensory feedback. This error signal elicits an adaptive response that returns performance to pre-perturbation levels (Shadmehr, Smith, & Krakauer, 2010). The applied perturbations can be designed to affect either limb kinematics or dynamics, and typically involve rotating visual feedback representations of the movement (Krakauer, Ghilardi, & Ghez, 1999) or applying external forces to the moving limb via a robotic manipulandum (Smith, Brandt, & Shadmehr, 2000), respectively. As these tasks involve basic reaching movements that have been highly learned over a participant's lifetime, performance levels typically return to baseline within a single training session.

Motor skill learning and adaptation are associated with functional and structural changes to a distributed brain network that includes primary motor (M1) and somatosensory (S1), dorsal (PMd) and ventral premotor (PMv), supplementary motor (SMA) and posterior parietal cortex (PPC), as well as the cerebellum and basal ganglia (Landi, Baguear, & Della-Maggiore, 2011; Scholz, Klein, Behrens, & Johansen-Berg, 2009). Thus, several candidate brain networks are accessible to tDCS or rTMS for investigating neuromodulatory effects on different features of motor learning. Furthermore, NIBS techniques are crucial for demonstrating that specific networks play an antecedent role in learning, as opposed to functional changes that emerge as a consequence (Diedrichsen & Kornysheva, 2015). To date, the primary region of interest for modulating online learning and retention of skill acquisition has been the contralateral, ipsilateral or bilateral M1 (Figure 2). In some cases, montages with electrodes positioned over PMd or the cerebellum have also been used, with cerebellum montages primarily used in relation to adaptation learning (Table 1). While tDCS electrodes have been placed overlying specific scalp locations, it should not be assumed that the underlying brain region is partially, specifically or selectively stimulated (Woods et al., 2016). Additionally, tDCS can modulate different stages of learning, best tested over multiple days.

Online motor performance and skill learning

Investigation of tDCS effects on online motor skill learning, that is performance gains observed during training, has focused primarily on anodal stimulation applied to a region of the scalp overlying the M1 contralateral to the practice hand or bilateral M1, with some investigations focusing on cerebellum, PMd, PPC (specifically area MT/V5), and dorsomedial (DMPFC) or dorsolateral prefrontal cortex (DLPFC) (for more complex tasks) (Table 1). Stimulation parameters across these studies included median intensities of 1mA (range = 0.2–2mA), target current densities of 0.04 mA/cm² (0.0167–0.1327mA/cm²) and durations of 15 minutes (7–42.9 minutes). More remains to be learned about optimal parameters for eliciting specific behavioral effects. For example, it has been reported that tDCS applied with the same polarity may have opposing motor cortical excitability effects for different stimulation intensities (Batsikadze, Moliadze, Paulus, Kuo, & Nitsche, 2013). However, as different behavioral tasks have been employed in these studies the relationship between neurophysiological changes and resulting behavioral changes (which may vary across task domains) remains uncertain (López-Alonso, Cheeran, & Fernández-Del-Olmo, 2015).

The effects of anodal tDCS on online sequence learning have been a particular area of interest (Amadi, Allman, Johansen-Berg, & Stagg, 2015; Ambrus et al., 2016; Cuyper et al., 2013;

Kang & Paik, 2011; Katak, Mummidisetty, & Stinear, 2012; Karok & Witney, 2013; M. F. Kuo et al., 2008; Nitsche et al., 2010; Nitsche et al., 2003; Reis et al., 2015; Reis et al., 2009; Stagg, Jayaram, et al., 2011; Tecchio et al., 2010; Vines, Cerruti, & Schlaug, 2008; Wade & Hammond, 2015). In an initial study, Nitsche and colleagues (2003) showed that anodal tDCS applied over M1 concurrently with training improved online implicit learning of a motor sequence, while stimulation applied to PMd, DMPFC and DLPFC did not (Nitsche et al., 2003). Similar effects have been reported for explicit sequence learning, which may be GABA-mediated (Amadi et al., 2015; Stagg, Bachtiar, et al., 2011; Stagg, Jayaram, et al., 2011). Interestingly, anodal stimulation applied over M1 prior to training appears to decrease subsequent learning rates (Amadi et al., 2015; Stagg, Bachtiar, et al., 2011; Stagg, Jayaram, et al., 2011), although whether or not this is mediated through a meta-plastic or homeostatic effect remains unclear (M. F. Kuo et al., 2008). Katak and colleagues (2012) attempted to further dissociate tDCS-related effects for explicit versus implicit learning (Katak et al., 2012). In this study, anodal tDCS was applied over M1 or PMd based on previous work regarding the relative roles these areas play in explicit (where PMd is highly critical) versus implicit (where M1 is highly critical) learning. Anodal stimulation over M1 during an implicit motor sequence task resulted in greater online improvements compared with sham, as well as greater retention 24 hours later. In contrast, anodal tDCS delivered over PMd showed no online effects relative to sham, but in fact impaired retention at 24 hours. Finally, Cantarero et al. (2015) showed that applying anodal tDCS over the ipsilateral cerebellum during skill learning (SVIPT task) in young healthy individuals augmented online skill acquisition via a reduction in error rates (Cantarero et al., 2015). This effect appeared to be robust, as it was present in every session for three consecutive days (the duration of the study). Interestingly, there were larger offline declines in the anodal tDCS group possibly due to a reduction in memory stability or that there was more accumulated knowledge to be lost. Despite this, the overall skill gains remained larger at one week follow up (Cantarero et al., 2015). Other previous work has shown a significant online learning enhancement effect of anodal tDCS over M1 for early training sessions only (Reis et al., 2009).

Online tDCS-mediated effects for visuomotor skill learning (non sequential) for both the upper (Antal, Begemeier, Nitsche, & Paulus, 2008; Antal et al., 2004; Foerster et al., 2013; Matsuo et al., 2011; Zhu et al., 2015) and lower (Shah, Nguyen, & Madhavan, 2013; Sriraman, Oishi, & Madhavan, 2014) limb have also been investigated. Earlier work by Antal and colleagues (2004), showed that anodal stimulation of contralateral M1 or area MT/V5 (an extrastriate area that has been implicated in motion processing) applied during learning improved performance in a visuomotor tracking task when applied concurrently with training (Antal et al., 2004). Application of tDCS on these locations is consistent with known parietofrontal networks involved in these behaviors (Johnen et al., 2015). Using a naturalistic golf-putting task, Zhu et al. (2015) observed that cathodal stimulation applied over left DLPFC indirectly improved putting performance relative to sham stimulation (Zhu et al., 2015). This effect was particularly pronounced when subjects were subjected to a multi-tasking constraint where putting and a verbal working memory task were performed simultaneously. Overall, these results suggest that secondary network effects of stimulation (i.e. – alteration of information processing within the set of interconnected cortical areas) may play a more significant role in real-world environments where different cognitive and learning processes constantly interact.

Online training-induced improvements in non-dominant hand dexterity on the Purdue Pegboard and Jebsen-Taylor tests can be facilitated by anodal tDCS (Bastani & Jaberzadeh, 2014;

Convento, Bolognini, Fusaro, Lollo, & Vallar, 2014; Kidgell, Goodwill, Frazer, & Daly, 2013). Kidgell and colleagues (2013) found that anodal tDCS applied to non-dominant M1 using a unilateral (cathode over contralateral orbit) or bilateral (cathode over contralateral M1) montage resulted in similar improvements of dexterity function (assessed with the Purdue Pegboard Test) in the non-dominant hand compared with sham stimulation (Kidgell et al., 2013). Using the same task, Bastani & Jaberzadeh (2014) investigated the effect of repeated offline application (up to 3) of relatively low intensity (0.2 mA) and duration (10 min) anodal tDCS to the dominant (left) M1 on corticospinal excitability and behavior (Bastani & Jaberzadeh, 2014). Not surprisingly, given our understanding of the need for synchronous application of tDCS with training (Fritsch et al., 2010), no behavioral effects were observed. Of note however, corticospinal excitability was significantly facilitated up to 24 hours depending on the interval between subsequent stimulation applications, which had been reported previously (Monte-Silva et al., 2013). This finding suggests that cumulative effects of stimulation may be sensitive to the time between tDCS application and training. It also underscores the lack of a clear relationship between the neurophysiological and the behavioral effects of tDCS—changes in one may not predict or reflect changes in the other. Convento et al. (2014) found that offline anodal tDCS applied to contralateral non-dominant M1 or ipsilateral PPC resulted in improved dexterity function in the non-dominant hand as well, with PPC and M1 stimulation having specific effects on action planning and execution, respectively (Convento et al., 2014).

A series of studies have looked at online learning and adaptation effects over the life span (Goodwill, Reynolds, Daly, & Kidgell, 2013; Hardwick & Celnik, 2014; Hoff et al., 2015; Hummel et al., 2010; Zimerman et al., 2013). Hummel and colleagues (2010) investigated motor performance effects of tDCS using a crossover design in a cohort of older adults (Hummel et al., 2010). When contralateral anodal or sham tDCS was applied concurrently with performance of the Jebsen-Taylor hand function test (JTT) they observed that anodal tDCS resulted in significant performance improvement relative to sham that lasted for over 30 min, and that the size of the effect correlated positively with age. The final group performance levels of the cohort were similar to those observed previously in a group of healthy young subjects. A later study by Zimerman and colleagues (2013) using very similar stimulation parameters looked instead at the effects of anodal tDCS applied to M1 on sequence learning in aged adults (Zimerman et al., 2013). Again, performance gains were observed when anodal tDCS was applied to contralateral M1 concurrently with training, with effects remaining significant up to 24 hours later. More recently, it was reported that tDCS can influence learning in children (Ciechanski & Kirton, 2016)

Goodwill and colleagues (2013) assessed whether there was a differential effect of contralateral versus bilateral M1 stimulation with concurrent training on an upper limb visuomotor tracking task (Goodwill et al., 2013). Here, the group of older adults displayed similar performance gains and increased learning rates were observed for both contralateral and bilateral M1 stimulation, relative to sham. Furthermore, both montages resulted in the facilitation of corticospinal excitability and a decrease in observed short-interval intracortical inhibition (SICI). Complementary work by Zimerman and colleagues (2014) reported that cathodal stimulation applied to M1 ipsilateral to the learning hand actually impaired learning (Zimerman, Heise, Gerloff, Cohen, & Hummel, 2014). Finally, a recent study by Hardwick and Celnik (2014) compared the effects of anodal tDCS applied to the ipsilateral cerebellum between healthy younger and older individuals during a visuomotor adaptation (screen cursor rotation) task (Hardwick &

Celnik, 2014). As expected, the group of older adults showed slower adaptation rates compared to younger adults when receiving sham tDCS. Older participants who received anodal tDCS however, displayed faster learning rates that were similar in magnitude to the young group.

In summary, these studies suggest that anodal stimulation applied over M1 or the cerebellum in a single training session may have broad-ranging effects across sequence learning or skill learning, respectively. Furthermore, may be an effective tool in facilitating motor learning and adaptation in older healthy adult populations. It should be noted however, that in some studies online improvements are not seen, such as in several of the studies conducted over multiple days that emphasize offline effects (see Table 2).

Offline motor skill learning and retention

Several studies, a majority of which have focused on sequence learning, have investigated offline motor skill learning and retention over multiple (typically at least three) days of training (Table 2) (Cantarero et al., 2015; Naros et al., 2016; Reis et al., 2015; Reis et al., 2009; Saucedo-Marquez, Zhang, Swinnen, Meesen, & Wenderoth, 2013; Schambra et al., 2011; Waters-Metenier et al., 2014). Reis and colleagues (2009) found that anodal tDCS applied to M1 concurrently with training over five consecutive days resulted in significant enhancement of offline skill gains and retention compared with sham in the sequential visual isometric pinch-force task (SVIPT) (Reis et al., 2009). While learning within sessions was not significantly different between the two groups, learning over the five sessions was facilitated in the group receiving anodal stimulation. Furthermore, this difference remained present when skill was retested three months later, suggesting that these gains had successfully consolidated and remained stable over the long-term. In a follow-up study, effects mediated by consolidation processes were further supported as offline skill gains induced by anodal tDCS were found to be dependent upon the passage of time, as opposed to requiring overnight sleep (Reis et al., 2015). Concurrent application of anodal tDCS with training also appears crucial for these effects to emerge as stimulation applied post-training only did not induce offline skill gains, consistent with the finding that tDCS alone does not elicit LTP unless it is associated with a second input delivered to the motor cortex in rodents (Fritsch et al., 2010). Modifications made to the montage used here (cathode placed over contralateral supraorbital location) to an alternative montage with extracephalic cathode location (ipsilateral shoulder) resulted in reduced effects of stimulation (Schambra et al., 2011). In agreement with modeling predictions, this finding suggests that the montage configuration is the primary determinant of the applied current density distribution, and plays an important role in resulting behavioral effects (Bestmann, 2015; de Berker, Bikson, & Bestmann, 2013; Woods et al., 2016). Finally, anodal tDCS applied over the cerebellum increased skill learning in this task through the enhancement of online as opposed to offline components. In particular, the larger gains were driven to a greater extent by reductions in error rates as opposed to changes in movement time. This suggests that specific task constraints may play a role in determining the motor network areas of interest (Cantarero et al., 2015). For example, anodal tDCS applied over the cerebellum concurrently with training for a task with very precise timing requirements enhanced offline improvement, as opposed to online learning as observed in prior studies (Wessel et al., 2016).

Saucedo-Marquez and colleagues (2013) conducted a crossover design that investigated the decomposable elements of the SVIPT task, sequence learning (sequential finger tapping) and visual isometric pinch force (Saucedo-Marquez et al., 2013). Following three days of training in each task with concurrent application of sham or anodal tDCS applied over M1, they observed that anodal stimulation improved online sequence learning, but only skill retention for the pinch force task. In addition to task-specific learning effects, these findings suggest that different learning processes interact with tDCS stimulation in non-additive ways as task complexity increases. Waters-Metenier et al. (2014) looked at task-specific effects of bilateral M1 stimulation, in this case on the learning novel hand movement synergy patterns and finger tapping sequences (Waters-Metenier et al., 2014). In this case, tDCS improved both synergy and sequence learning with long-term retention of the effects persisting for at least 4 weeks following training. Furthermore, bilateral M1 stimulation effects showed task- and effector-based generalization to untrained hand synergies and finger sequences, and the untrained hand, respectively. This generalization is most likely the result of polarity specific effects on each hemisphere (Naros et al., 2016).

Adaptation

tDCS-related effects on adaptation have also been studied in young healthy adults (Avila et al., 2015; Galea et al., 2011; Herzfeld et al., 2014; Hunter, Sacco, Nitsche, & Turner, 2009; Orban de Xivry et al., 2011) (Table 3). Galea and colleagues (2011) compared the effects of anodal tDCS applied to the cerebellum versus M1 during concurrent adaptation to 30-degree rotation of visual feedback (Galea et al., 2011). Here, cerebellar tDCS resulted in faster initial adaptation to the perturbed task environment, while M1 stimulation showed no effect in this regard. In contrast, a dissociative effect emerged when M1 stimulation resulted in improved retention of the newly acquired visuomotor transformation, as subjects receiving this stimulation adapted faster when the perturbation was reintroduced following a washout period. Interestingly, in a force-field reaching task that assesses adaptation to perturbed upper limb dynamics, anodal tDCS applied to the cerebellum increased error-dependent learning and facilitated adaptation, while M1 stimulation had no effect (Herzfeld et al., 2014). Furthermore, anodal tDCS applied over M1 did not improve retention. In addition to the work above, this suggests that M1 and the cerebellum play complimentary roles with respect to different learning processes, and tDCS can be used to influence these processes in a task-dependent manner.

Meta-analyses and systematic reviews of the literature

Hashemirad and colleagues (Hashemirad et al., 2016) reviewed the effects of anodal tDCS on motor sequence learning in healthy adults. 13/140 reviewed articles (9.2%) met the eligibility criteria (one or more sessions of unilateral or bilateral tDCS over M1 concurrently with training the SFTT or SVIPT tasks, and included a negative control group for stimulation (either sham tDCS plus task training or training only)). The authors conclude that the effects of anodal tDCS over M1 on sequential motor learning may depend on learning stages (Dayan & Cohen, 2011) and be to some extent task- or montage-specific (Schambra et al., 2011) and that multiple tDCS sessions present advantages over single session applications on both finger tapping and SVIPT tasks. Similarly, the effects on long-term retention might be task specific with different retention effects reported in the finger tapping versus SVIPT tasks (Reis et al., 2015; Reis et al., 2009; Saucedo-

Marquez et al., 2013; Waters-Metenier et al., 2014). Of note, the relatively small number of studies fitting the inclusion criteria is a primary example of the challenges faced when attempting to perform quantitative reviews of tDCS effects on motor learning (Antal, Keeser, Priori, Padberg, & Nitsche, 2015; Nitsche, Bikson, & Bestmann, 2015). Other meta-analyses focusing on effects of a single tDCS session have reported few significant physiological (Horvath, Forte, & Carter, 2015a) and no significant cognitive effects (Horvath, Forte, & Carter, 2015b), although questions regarding methodology used in these analyses have been raised (Antal et al., 2015). Additionally, it should be kept in mind that in the absence of systematic critical assessment of the quality of individual studies, and understanding of the biases that they may be prone to, interpretation of meta-analysis findings remains uncertain (Bastian, 2016).

Caveats and considerations for the future

There has been a substantial increase in the number of investigations using tDCS over M1 to influence motor learning since the previous consensus document in 2008 (Reis et al., 2008). Since then, a number of scientific, methodological and social caveats have emerged that deserve closer scrutiny by those interested in using this technique. Many of these caveats are applicable to the broader realm of basic and clinical science, while others are more specific to the use of tDCS.

Scientific caveats include understanding that application of tDCS over one region may not influence that region or may result in behavioral changes through distant (i.e. - poor spatial targeting or focality) or secondary effects on other interconnected cortical areas (Dayan et al., 2013), infrequent use of modeling to guide stimulation montages (de Berker et al., 2016) or overly simplified modeling assumptions that neglect the folding of the cortex and consequences on stimulation effects (i.e. – decreasing the threshold for hyperpolarization of neurons on one side of a gyrus but depolarization on the other). Systematic determination of the optimal timing of stimulation for inducing long-lasting effects, and how this varies across individuals, is another avenue where more research is needed (Manenti, Sandrini, Brambilla, & Cotelli, 2016; Martin, Liu, Alonzo, Green, & Loo, 2014). Indeed, a more coordinated effort where experimental parameters and modeling assumptions are iteratively refined is required (Bestmann, 2015; Brunoni et al., 2012).

While the neuromodulatory after-effects induced by NIBS techniques (including tDCS) appear to be relatively stable over prolonged time courses (López-Alonso et al., 2015), the nature and magnitude of these effects varies considerably between individuals (Hamada, Murase, Hasan, Balaratnam, & Rothwell, 2013; Nettekoven et al., 2015; Nitsche & Paulus, 2001; Wiethoff, Hamada, & Rothwell, 2014). One source of this variability may be the brain state-dependent nature of these effects, meaning that the history of endogenous activity of one region may be crucial to the effects of brain stimulation (Silvanto, Cattaneo, Battelli, & Pascual-Leone, 2008) and consequent activation of homeostatic and non-homeostatic metaplasticity mechanisms (Amadi et al., 2015; Muller-Dahlhaus & Ziemann, 2015). More complete investigation of these proposed factors represents an important hurdle for elucidating inter-individual variability. Furthermore, under-reporting of negative effects (Horvath et al., 2015b) due to publication bias (Mancuso, Ilieva, Hamilton, & Farah, 2016; Shiozawa et al., 2014; Vannorsdall et al., 2016) represents another important scientific caveat that must be addressed in order to facilitate future research progress.

Motor learning is a rather complex process in itself, with different forms (i.e.- use-dependent, error-based, reinforcement, strategic learning) and likely different underlying neural substrates. Many of the tasks employed to determine the effects of tDCS on learning either have several variants, or include different forms of learning. These circumstances limit the information that can be drawn from the effects of tDCS on those tasks. For instance, it is possible that tDCS changes learning because it improves knowledge of the dynamics of the task at hand, or because it improves the strategic approach to that task. Depending on the specific task variant or learning strategies employed by a given individual, tDCS applied to one region may or may not influence learning of that task. Therefore, better understanding of motor learning processes and the tasks used to assess them will be critical to determine whether NIBS can or cannot manipulate behaviors that are potentially impactful to daily life. Similarly, the issue of generalization is of clear relevance to rehabilitation and remains a major challenge. In addition to investigating the efficacy of tDCS in enhancing specific quantitative features of skill learning, improving our understanding of the effects of tDCS on generalization of learning across different skills will also be an important scientific endeavor (Waters-Metenier et al., 2014).

Maturation of the tDCS field since the previous consensus document (Reis et al., 2008) and the focus on enhancing human motor learning have overall raised the bar of methodological and design requirements in tDCS studies. Present problems in the field include: (1) insufficient use of double-blind designs (see above, for example only 25 out of the 60 published studies on tDCS effects on motor learning in healthy adults reviewed here utilized double-blind designs) and positive controls (stimulation of other cortical regions); (2) insufficient differentiation and understanding of design and claims when carrying out exploratory (hypothesis-generating) versus confirmatory (hypothesis-driven) research (the former suggesting trends and providing data for prospective power analysis and the latter, strengthened by preregistration (Finkel, Eastwick, & Reis, 2015), allowing drawing conclusions on particular effects); (3) insufficient efforts to reduce false-positive rates in studies geared to provide proof of principle data to power subsequent clinical trials; (4) scarcity of preregistration of hypothesis, design, power analysis and data processing for research written up as hypothesis-driven and confirmatory (see for example <https://blogs.royalsociety.org/publishing/registered-reports/>); (5) insufficient prepublication and sharing of materials (Lauer, Krumholz, & Topol, 2015; Morey et al., 2016), particularly in relation to negative results; (6) insufficient post-publication repositories of data (see for example (Campbell et al., 2002)) and in general (Nosek et al., 2015)) to allow additional analyses; (7) seldom use of experimental designs with replications built in (Anderson et al., 2016; Cohen et al., 1997; Gilbert, King, Pettigrew, & Wilson, 2016; Nosek et al., 2015); and (8) use of appropriate sample size based on prospective power analysis for studies claimed to be hypothesis-driven.

How to evaluate reproducibility of tDCS effects? A special mention should be made to the expression of the general reproducibility problem in science (Collins & Tabak, 2014) to tDCS studies of motor learning. There are three levels of reproducibility: methods, results and inferential (Goodman, Fanelli, & Ioannidis, 2016). Methodological reproducibility requires “*provision of enough detail about study procedures and data so the same procedures could ...be exactly repeated*”. More importantly, in order to evaluate methodological reproducibility, there should be “*...agreement about the level of detail needed in the description of the measurement process, ...the degree of processing of the raw data ...*” and the “*completeness of the analytic*

reporting". Such agreement does not exist at the present time in the tDCS field. Development of standards of consistency in methodological reporting would represent an important step forward. To start addressing this problem, we propose a checklist with reporting standards for tDCS studies (Table 4). Reproducibility of results refers to replicability once the tools for methodological replication are fully provided and agreed upon. Importantly, replicability is best tested for stochastic data using Bayesian paradigms of accumulating evidence more than binary criteria of successful or unsuccessful replication (Goodman et al., 2016). Clearly, "*statistical significance by itself tells very little about whether one study has "replicated" the results of another*". Finally, inferential reproducibility refers to "*drawing of qualitatively similar conclusions from either an independent replication of a study or a reanalysis of the original study*". Please, see Goodman and Ioannidis for a full discussion. (Goodman et al., 2016)

A unique concern that has emerged with transcranial electrical stimulation techniques, is that the simplicity, low-cost nature of, and public access to the technology has lead to the emergence of a popular do-it-yourself movement where individuals participate in self-experimentation without oversight. Such data is not part of well-designed experimental protocols (Fitz & Reiner, 2015; Riggall et al., 2015; Wexler, 2016). An additional worrisome aspect of this movement is that no studies have investigated yet the long-term effects associated with tDCS chronic use (for further reading please see http://www.ifcn.info/uploadfiles/documents/2015/Using_tES_devices_as_DIY_FINAL_13Dec15.pdf).

As nuanced understanding of the possibilities and limitations of a given experimental technique matures, critical evaluation amongst experts leads to the progressive refinement of standards associated with its use. Used alone, tDCS has a quite large parameter space. On one hand, this flexibility is one of the main features supporting the general use of tDCS across several disciplines and purposes. However, this has resulted in substantial variation in stimulation parameters across individual studies and laboratories, and has presented a challenge to the convergence upon field-wide standards. Furthermore, when used in conjunction with different behavioral tasks (or even variants of a single task) this dimensionality substantially grows. An interesting approach to address the issue of heterogeneity of stimulation protocols and tasks could be to directly account for the heterogeneity within statistical models through inclusion of stimulation parameters, electrode montages and task variants as covariates. In this way, meta-analyses could serve as important tools for identifying which experimental factors predominantly explain significant levels of inter- or intra-individual variability (Horvath, Vogrin, Carter, Cook, & Forte, 2016; Lopez-Alonso, Fernandez-Del-Olmo, Costantini, Gonzalez-Henriquez, & Cheeran, 2015).

Conclusions

The 2008 consensus concluded: "*In summary, the scarce studies performed so far point to the encouraging conclusion that noninvasive brain stimulation can contribute to the understanding of mechanisms underlying motor learning and motor memory formation and raise the exciting hypothesis that this increased understanding could in the future result in the development of new strategies to enhance specific stages of learning and memory processing in healthy humans and in patients with brain lesions*". A growing body of work continues to support the use of

noninvasive brain stimulation as a tool for neuromodulation of motor learning. However, the larger literature has raised numerous and substantial caveats to be considered that are not trivial to resolve. More work is required to understand mechanisms underlying the effects of tDCS and substrates of inter-individual variability, to optimize dosing and methodological designs. Additionally, better understanding of motor skill learning processes and standardization of tasks will help reduce inter-study variability, as the scientific approach to manipulating motor learning will become more precise. Emerging efforts for improving transparency, full reporting of data and all analyses carried out, replication and data sharing through repositories will be important to answering these questions.

Footnote (p. 3; first paragraph of Introduction)

^aTMS-based investigations have included the use of repetitive (primarily 1, 5 or 10Hz) and patterned (continuous or intermittent theta burst; cTBS or iTBS, respectively) stimulation protocols. Transcranial electrical stimulation (TES) techniques have included direct (tDCS) or alternating current (tACS) (Krause, Meier, Dinkelbach, & Pollok, 2016; Pollok, Boysen, & Krause, 2015), or random noise (tRNS) (Saiote, Polanía, Rosenberger, Paulus, & Antal, 2013) stimulation. Since published findings using rTMS, TBS, tACS and tRNS for enhancing motor learning remain particularly sparse (Figure 1) the primary focus of the review will be on tDCS-based interventions.

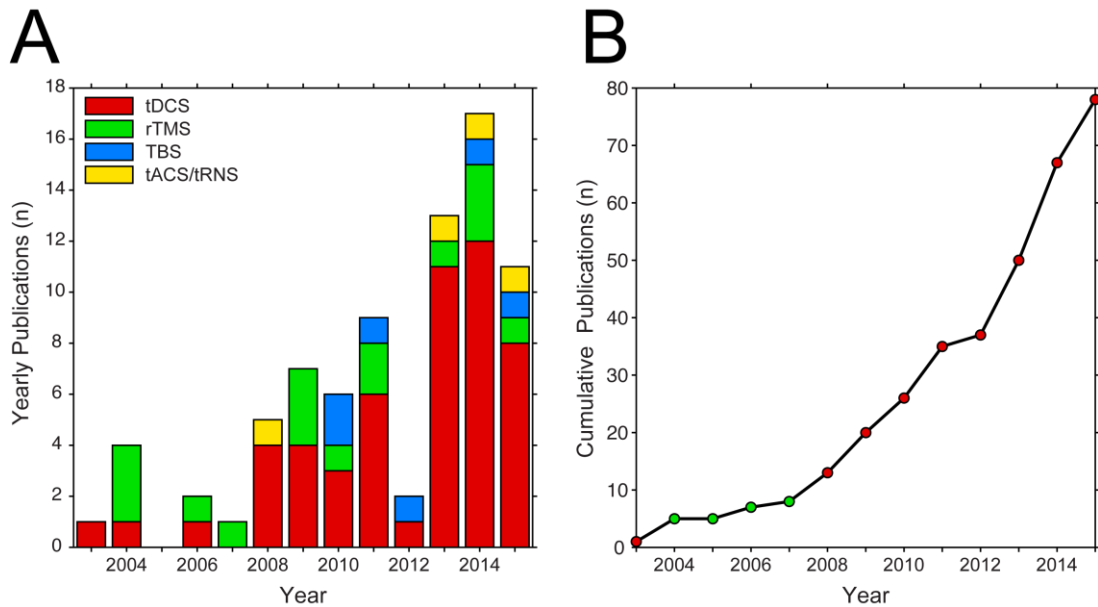


Figure 1. Publications of studies investigating NIBS-based enhancement of motor learning or memory formation. (A) Yearly publications grouped into categories of different non-invasive brain stimulation techniques. Categories consist of tDCS, rTMS (e.g. - 1, 5 or 10 Hz), TBS (e.g. - iTBS or cTBS), or tACS/tRNS. (B) Cumulative publications by year. Marker color indicates the majority stimulation type used in studies for that year.

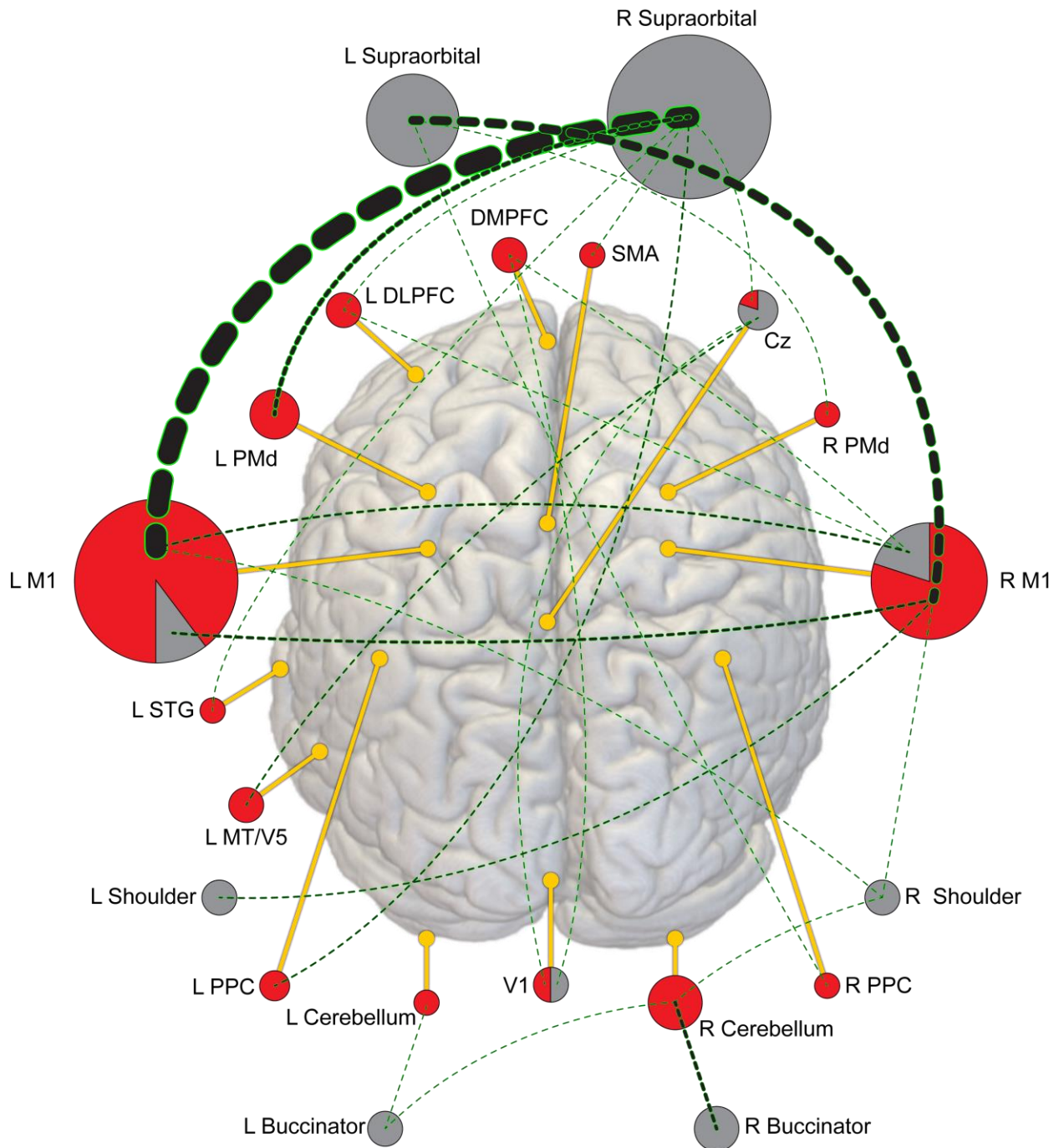


Figure 2. Proportion of tDCS montages utilized across eighty-three motor learning experiments. Circles for each location are proportionally filled with red (anode) and grey (cathode) to represent the relative number of studies the anode or cathode was placed at that location (i.e. – locations with filled red circles were used as anodal only, grey as cathode locations only, pie charts as both). The diameter of each circle is relative to the proportion of experiments that location was used in. Dashed lines represent montage connections between anode and cathode, with the line weighted relative to the proportion of experiments that particular montage was used in.

Table 1. Investigations of tDCS-based enhancement of motor skill acquisition over a single day of training

Reference	Anode Locations	Cathode Locations	Intensity (mA)	Anode Current Density (mA/cm ²)	Duration (min)	Stim Application Timing (relative to training)	Sample Size (avg. per group)	Task Type	Cohort	Enhanced Online Learning Effect	Enhanced Offline Learning Effect	Double-blind?
Nitsche et al. (2003)	L M1 L PMd L DLPFC R M1	R SO R SO R M1 R M1	1	0.03	15	Concurrent	20	Sequence Learning (SFTT)	Adult	YES	N/A	NO
Vines et al. (2008)	R M1 R M1	L SO L M1	1	0.06	20	Between training blocks	16	Sequence Learning (SFTT)	Adult	YES	N/A	NO
Kuo et al. (2008)	L M1	R SO	1	0.03	10	Pre-training	20	Sequence Learning (SFTT)	Adult	NO	NO	NO
Tecchio et al. (2010)	R M1	R Shoulder	1	0.03	15	Between training blocks	22	Sequence Learning (SFTT)	Adult	NO	YES	NO
Nitsche et al. (2010)	L PMd	R SO	1	0.03	15	Post-training	8	Sequence Learning (SFTT)	Adult	NO	YES	NO
Kang et al. (2011)	L M1 L M1	R SO R M1	2	0.08	20	Concurrent	11	Sequence Learning (SFTT)	Adult	NO	YES	YES
Stagg et al. (2011b)	L M1	R SO	1	0.03	10	Pre-training, Concurrent	7.3	Sequence Learning (SFTT), Reaction Time (Simple)	Adult	YES	NO	NO
Kantak et al. (2012)	L M1 L PMd	R SO R SO	1	0.13	15	Concurrent	13	Sequence Learning (SFTT)	Adult	YES	YES	NO
Karok et al. (2013)	L M1 R M1	R M1 L SO	1.5	0.06	10	Concurrent	20	Sequence Learning (SFTT)	Adult	YES	YES	NO
Cuyppers et al. (2013)	L M1	R SO	1, 1.5	0.04/0.06	20	Concurrent	13	Sequence Learning (SFTT)	Adult	YES	YES	YES
Zimmerman et al. (2013)	L M1	R SO	1	0.04	20	Concurrent	9.7	Sequence Learning (SFTT)	Aged	YES	YES	YES
Amadi et al. (2015)	L M1	R SO	1	0.03	20	Pre-training, Concurrent	13	Sequence Learning (SFTT)	Adult	NO	N/A	NO
Wade et al. (2015)	L PMd	R SO	1	0.04	14	Concurrent	10	Sequence Learning (SFTT)/Action Observation	Adult	YES	NO	NO
Ambrus et al. (2016)	L M1	R SO	1	0.03	13	Concurrent	17	Sequence Learning (SFTT)	Adult	NO	NO	NO

Krause et al. (2016)	L M1	R SO	1	0.03	10	Between training blocks	13.2	Sequence Learning (SFTT)	Adult	YES	N/A	YES
Antal et al. (2004)	L MT/V5 V1 L M1	Cz Cz R SO	1	0.03	10	Concurrent	7	Visuomotor Learning (Tracking; Arm)	Adult	YES	N/A	NO
Antal et al. (2008)	L MT/V5 L M1 Cz	Cz R SO R SO	1	0.03	10	Pre-training	13	Visuomotor Learning (Tracking; Arm)	Adult	YES	N/A	NO
Matsuo et al. (2011)	L M1	R SO	1	0.03	20	Between training blocks	14	Visuomotor Learning (Circle Drawing)	Adult	YES	YES	NO
Shah et al. (2013)	L Cb R M1	L Bucc L SO	1	0.13	15	Concurrent	8	Visuomotor Learning (Tracking; Ankle)	Adult	YES	N/A	YES
Foerster et al. (2013)	L M1 L PMd SMA R Cerebellum L DLPFC	R SO R SO R SO R Shoulder R SO	2	0.10	13	Concurrent	18	Visuomotor Learning (Handwriting)	Adult	YES	N/A	YES
Goodwill et al. (2013)	R M1 R M1	L SO L M1	1	0.04	15	Pre-training, Concurrent	11	Visuomotor Learning (Tracking; Arm)	Aged	YES	NO	YES
Sriraman et al. (2014)	R M1	L SO	1	0.13	15	Pre-training, Concurrent	12	Visuomotor Learning (Tracking; Ankle)	Adult	YES	YES	NO
Zhu et al. (2015)	L DLPFC	R SO	1.5	0.06	20	Concurrent	13.5	Visuomotor Learning (Golf Putting)	Adult	YES	NO	NO
Saiote et al. (2013)	L M1	R SO	1	0.03	10	Concurrent	10	Visuomotor Learning (Isometric Force)	Adult	NO	N/A	NO
Boggio et al. (2006)	L M1 R M1	R SO L SO	1	0.03	20	Between training blocks	6.5	Dexterity (Jebsen-Taylor Hand Function Test)	Adult	YES	N/A	NO
Hummel et al. (2010)	L M1	R SO	1	0.04	20	Concurrent	10	Dexterity (Jebsen-Taylor Hand Function Test)	Aged	YES	YES	YES
Kidgell et al. (2013)	R M1 R M1	L SO L M1	1	0.04	13	Between training blocks	11	Dexterity (Purdue Pegboard Task)	Adult	YES	YES	YES
Convento et al. (2014)	R M1 L M1 R PPC L PPC	L SO R SO L SO R SO	2	0.08	10	Between training blocks	12	Dexterity (Jebsen-Taylor Hand Function Test)	Adult	YES	N/A	YES
Ishikuro et al. (2014)	DMPFC	V1	1	0.03	15	Concurrent	7	Dexterity (Pegboard Task)	Adult	YES	N/A	NO

Bastani et al. (2014)	L M1	R SO	0.2	0.02	10	Between training blocks	9	Dexterity (Purdue Pegboard Task)	Adult	NO	NO	NO
Pavlova et al. (2014)	L M1 R M1 L PMd R PMd	R SO L SO R SO L SO	0.5	0.03	10	Concurrent	12	Dexterity (Spring Compression)	Adult	YES	NO	NO
Hoff et al. (2015)	R M1	L SO	1	0.03	20	Concurrent	12	Dexterity (Ball Rotation Task)	Aged	YES	NO	NO
Galea et al. (2009)	L M1	R SO	1	0.0400	30	Concurrent	9	Thumb Movement (Opposite)	Adult	YES	N/A	NO
Bortoletto et al. (2015)	R M1	L SO	1.5	0.0600	20	Concurrent	44	Thumb Movement (Abduction)	Adult	NO	N/A	NO
Floel et al. (2008)	L STG	R SO	1	0.0286	20	Concurrent	19	Associative Verbal Learning Task	Adult	YES	NO	YES
Tanaka et al. (2009)	L M1	R SO	2	0.0571	10	Concurrent	10	Reaction Time (Simple)	Adult	YES	N/A	NO
Lindenberg et al. (2013)	L M1 L M1	R M1 R SO	1	0.0286	30	Concurrent	20	Reaction Time (Choice)	Adult	NO	NO	NO
Zuchowski et al. (2014)	R Cerebellum	R Buccinator	2	0.0571	42.9	Concurrent	10	Conditioning (Eyeblink)	Adult	YES	N/A	YES
Soekadar et al. (2014)	R M1	L SO	1	0.0417	7	Concurrent	10	Mu-rhythm Modulation BCI	Adult	NO	NO	NO

Table 2. Studies investigating tDCS-based enhancement of motor skill learning and retention over multiple days of training

Reference	Anode Locations	Cathode Locations	Intensity (mA)	Anode Current Density (mA/cm ²)	Duration (min)	Stim Application Timing (relative to training)	Sample Size (avg. per group)	Task Type	Training Period (Days)	Enhanced Online Learning Effect	Enhanced Offline Learning Effect	Double-blind?
Reis et al. (2009)	L M1	R SO	1	0.04	20	Concurrent	12	Sequence Learning (SVIPT)	5	YES*	YES	YES
Schambra et al. (2011)	L M1 R M1	R Shoulder L Shoulder	1	0.04	20	Concurrent	15.5	Sequence Learning (SVIPT)	3	N/A*	YES	NO
Saucedo-Marquez et al. (2013)	R M1	L Shoulder	1	0.04	20	Concurrent	15	Sequence Learning (SFTT)/Visuomotor Learning (Isometric Pinch Force)	3	Mixed (SFTT only)	YES (Pinch Force)	YES
Waters-Metenier et al. (2014)	R M1	L M1	2	0.06	25	Concurrent	13	Sequence Learning (SFTT)/Motor Synergy Hand Configuration	4	YES*	YES	YES
Cantarero et al. (2015)	R Cerebellum	R Buccinator	2	0.08	20	Concurrent	11	Sequence Learning (SVIPT)	3	YES	NO	YES
Reis et al. (2015)	L M1	R SO	1	0.06	15	Concurrent, Post-training	15.9	Sequence Learning (SVIPT)	3	NO	YES	YES
Naros et al. (2016)	R M1 R M1	L SO L M1	1	0.06	20	Pre-training	10	Visuomotor Learning (Tracing)	3	Mixed (Bilateral M1 only)	YES	NO

* Online effects occurred on Day 1 of training only.

Table 3. Studies investigating tDCS-based enhancement of motor skill adaptation in healthy subjects

Reference	Anode Locations	Cathode Locations	Intensity (mA)	Anode Current Density (mA/cm ²)	Duration (min)	Stim Application Timing (relative to training)	Sample Size (avg. per group)	Task Type	Cohort	Enhanced Online Learning Effect	Enhanced Offline Learning Effect	Double-blind?
Hunter et al. (2009)	L M1	R SO	1	0.03	17	Concurrent	14	Adaptation (Force-field)	Adult	NO	NO	NO
de Xivry et al. (2011)	L M1 L PPC	R SO R SO	1	0.04	20	Concurrent	8.6	Adaptation (Force-field)	Adult	YES	NO	NO
Galea et al. (2011)	L M1 R Cerebellum	R SO R Buccinator	2	0.08	15	Concurrent	9.5	Adaptation (Screen Cursor Rotation)	Adult	YES (Cerebellum)	YES (M1)	YES
Herzfeld et al. (2014)	L M1 R Cerebellum	R SO R Buccinator	2	0.08	25	Concurrent	12.75	Adaptation (Force-field)	Adult	YES	NO	YES
Hardwick & Celnik (2014)	R Cerebellum	R Buccinator	2	0.08	15	Concurrent	11	Adaptation (Screen Cursor Rotation)	Aged	YES	NO	NO
Avila et al. (2015)	R Cerebellum	L Buccinator	1.5	0.13	15	Pre-training, Concurrent	10	Adaptation (Saccade)	Adult	YES	NO	YES

Table 4. Reporting checklist for tDCS studies. Modified from (Chipchase et al., 2012)

Experimental Design Factors:			
Controls used	<input type="checkbox"/> None	<input type="checkbox"/> Sham	<input type="checkbox"/> Active
Blinding used	<input type="checkbox"/> None	<input type="checkbox"/> Single	<input type="checkbox"/> Double
Hypothesis statement	<input type="checkbox"/> Yes	<input type="checkbox"/> No	
If Hypothesis-based:			
Power-analysis statement	<input type="checkbox"/> Yes	<input type="checkbox"/> No	
Pre-registration	<input type="checkbox"/> Yes	<input type="checkbox"/> No	
Exploratory-based	<input type="checkbox"/> Yes	<input type="checkbox"/> No	
Participant Factors:	Reported?	Controlled?	
Number of subjects	<input type="checkbox"/>	<input type="checkbox"/>	
Age of subjects	<input type="checkbox"/>	<input type="checkbox"/>	
Gender of subjects	<input type="checkbox"/>	<input type="checkbox"/>	
Handedness of subjects	<input type="checkbox"/>	<input type="checkbox"/>	
Subjects prescribed medication	<input type="checkbox"/>	<input type="checkbox"/>	
Use of CNS active drugs (e.g. anti-convulsants)	<input type="checkbox"/>	<input type="checkbox"/>	
Neuropsychological evaluation	<input type="checkbox"/>	<input type="checkbox"/>	
Any medical conditions	<input type="checkbox"/>	<input type="checkbox"/>	
History of specific repetitive motor activity	<input type="checkbox"/>	<input type="checkbox"/>	
<u>Years of Education completed</u>	<input type="checkbox"/>	<input type="checkbox"/>	
Stimulation Factors:	Reported?	Controlled?	
Scalp position of tDCS electrodes	<input type="checkbox"/>	<input type="checkbox"/>	
MRI-based localization of tDCS electrodes	<input type="checkbox"/>	<input type="checkbox"/>	
Electrode type (size and geometry)	<input type="checkbox"/>	<input type="checkbox"/>	
Current density of applied stimulation	<input type="checkbox"/>	<input type="checkbox"/>	
Type of stimulator used (e.g. brand)	<input type="checkbox"/>	<input type="checkbox"/>	

Stimulation intensity	<input type="checkbox"/>	<input type="checkbox"/>	
Stimulation ramp time	<input type="checkbox"/>	<input type="checkbox"/>	
Stimulation duration	<input type="checkbox"/>	<input type="checkbox"/>	
Number of Sessions	<input type="checkbox"/>	<input type="checkbox"/>	
If Multiple Sessions:			
Time interval between sessions	<input type="checkbox"/>	<input type="checkbox"/>	
Subject attention (level of arousal) during testing	<input type="checkbox"/>	<input type="checkbox"/>	
Subject activities during stimulation	<input type="checkbox"/>	<input type="checkbox"/>	
tDCS-induced sensations (i.e. - itching, pain, heat, pinching, burning)	<input type="checkbox"/>	<input type="checkbox"/>	
Analysis & Statistics factors:			
Effect-size(s) reported	<input type="checkbox"/> Yes	<input type="checkbox"/> No	
Raw data uploaded to publicly accessible data repository	<input type="checkbox"/> Yes	<input type="checkbox"/> No	
Analyzed data uploaded to publicly accessible data repository	<input type="checkbox"/> Yes	<input type="checkbox"/> No	
Full analysis protocol including custom scripts uploaded to publicly accessible data repository	<input type="checkbox"/> Yes	<input type="checkbox"/> No	

References

- Abe, M., Schambra, H., Wassermann, E. M., Luckenbaugh, D., Schweighofer, N., & Cohen, L. G. (2011). Reward improves long-term retention of a motor memory through induction of offline memory gains. *Curr Biol*, 21(7), 557-562.
- Amadi, U., Allman, C., Johansen-Berg, H., & Stagg, C. J. (2015). The homeostatic interaction between anodal transcranial direct current stimulation and motor learning in humans is related to GABA<inf>A</inf> activity. *Brain Stimulation*, 8(5), 898-905.
- Ambrus, G. G., Chaieb, L., Stilling, R., Rothkegel, H., Antal, A., & Paulus, W. (2016). Monitoring transcranial direct current stimulation induced changes in cortical excitability during the serial reaction time task. *Neuroscience Letters*, 616, 98-104.
- Anderson, C. J., Bahnik, S., Barnett-Cowan, M., Bosco, F. A., Chandler, J., Chartier, C. R., . . . Zuni, K. (2016). Response to Comment on "Estimating the reproducibility of psychological science". *Science*, 351(6277), 1037.
- Antal, A., Begemeier, S., Nitsche, M. A., & Paulus, W. (2008). Prior state of cortical activity influences subsequent practicing of a visuomotor coordination task. *Neuropsychologia*, 46(13), 3157-3161.
- Antal, A., Keeser, D., Priori, A., Padberg, F., & Nitsche, M. A. (2015). Conceptual and Procedural Shortcomings of the Systematic Review "Evidence That Transcranial Direct Current Stimulation (tDCS) Generates Little-to-no Reliable Neurophysiologic Effect Beyond MEP Amplitude Modulation in Healthy Human Subjects: A Systematic Review" by Horvath and Co-workers. *Brain Stimul*, 8(4), 846-849.
- Antal, A., Nitsche, M. A., Kincses, T. Z., Kruse, W., Hoffmann, K. P., & Paulus, W. (2004). Facilitation of visuo-motor learning by transcranial direct current stimulation of the motor and extrastriate visual areas in humans. *European Journal of Neuroscience*, 19(10), 2888-2892.
- Avila, E., Van Der Geest, J. N., Kengne Kanga, S., Verhage, M. C., Donchin, O., & Frens, M. A. (2015). Cerebellar transcranial direct current stimulation effects on saccade adaptation. *Neural Plasticity*, 2015.
- Bastani, A., & Jaberzadeh, S. (2014). Within-session repeated a-tDCS: The effects of repetition rate and inter-stimulus interval on corticospinal excitability and motor performance. *Clinical Neurophysiology*, 125(9), 1809-1818.
- Bastian, H. (2016). Psychology's Meta-Analysis Problem. *PLOS Blogs*, <http://blogs.plos.org/absolutely-maybe/2016/07/05/psychologys-meta-analysis-problem/>.
- Batsikadze, G., Moliadze, V., Paulus, W., Kuo, M. F., & Nitsche, M. A. (2013). Partially non-linear stimulation intensity-dependent effects of direct current stimulation on motor cortex excitability in humans. *J Physiol*, 591(7), 1987-2000.
- Bestmann, S. (2015). Computational neurostimulation in basic and translational research. *Prog Brain Res*, 222, xv-xx.
- Brunoni, A. R., Nitsche, M. A., Bolognini, N., Bikson, M., Wagner, T., Merabet, L., . . . Fregni, F. (2012). Clinical research with transcranial direct current stimulation (tDCS): challenges and future directions. *Brain Stimul*, 5(3), 175-195.

- Bütefisch, C. M., Khurana, V., Kopylev, L., & Cohen, L. G. (2004). Enhancing Encoding of a Motor Memory in the Primary Motor Cortex by Cortical Stimulation. *Journal of Neurophysiology*, 91(5), 2110-2116.
- Campbell, E. G., Clarridge, B. R., Gokhale, M., Birenbaum, L., Hilgartner, S., Holtzman, N. A., & Blumenthal, D. (2002). Data withholding in academic genetics: evidence from a national survey. *JAMA*, 287(4), 473-480.
- Cantarero, G., Spampinato, D., Reis, J., Ajagbe, L., Thompson, T., Kulkarni, K., & Celnik, P. (2015). Cerebellar direct current stimulation enhances on-line motor skill acquisition through an effect on accuracy. *Journal of Neuroscience*, 35(7), 3285-3290.
- Censor, N., Buch, E. R., Nader, K., & Cohen, L. G. (2015). Altered Human Memory Modification in the Presence of Normal Consolidation. *Cereb Cortex*.
- Censor, N., Dayan, E., & Cohen, L. G. (2014). Cortico-subcortical neuronal circuitry associated with reconsolidation of human procedural memories. *Cortex*, 58, 281-288.
- Censor, N., Dimyan, M. A., & Cohen, L. G. (2010). Modification of existing human motor memories is enabled by primary cortical processing during memory reactivation. *Curr Biol*, 20(17), 1545-1549.
- Censor, N., Horowitz, S. G., & Cohen, L. G. (2014). Interference with existing memories alters offline intrinsic functional brain connectivity. *Neuron*, 81(1), 69-76.
- Censor, N., Sagi, D., & Cohen, L. G. (2012). Common mechanisms of human perceptual and motor learning. *Nat Rev Neurosci*, 13(9), 658-664.
- Chen, R., Classen, J., Gerloff, C., Celnik, P., Wassermann, E. M., Hallett, M., & Cohen, L. G. (1997). Depression of motor cortex excitability by low-frequency transcranial magnetic stimulation. *Neurology*, 48(5), 1398-1403.
- Chipchase, L., Schabrun, S., Cohen, L., Hodges, P., Ridding, M., Rothwell, J., . . . Ziemann, U. (2012). A checklist for assessing the methodological quality of studies using transcranial magnetic stimulation to study the motor system: an international consensus study. *Clin Neurophysiol*, 123(9), 1698-1704.
- Ciechanski, P., & Kirton, A. (2016). Transcranial Direct-Current Stimulation Can Enhance Motor Learning in Children. *Cereb Cortex*.
- Cohen, L. G., Celnik, P., Pascual-Leone, A., Corwell, B., Falz, L., Dambrosia, J., . . . Hallett, M. (1997). Functional relevance of cross-modal plasticity in blind humans. *Nature*, 389(6647), 180-183.
- Collins, F. S., & Tabak, L. A. (2014). Policy: NIH plans to enhance reproducibility. *Nature*, 505(7485), 612-613.
- Convento, S., Bolognini, N., Fusaro, M., Lollo, F., & Vallar, G. (2014). Neuromodulation of parietal and motor activity affects motor planning and execution. *Cortex*, 57, 51-59.
- Cuypers, K., Leenus, D. J. F., van den Berg, F. E., Nitsche, M. A., Thijs, H., Wenderoth, N., & Meesen, R. L. J. (2013). Is Motor Learning Mediated by tDCS Intensity? *PLoS ONE*, 8(6).
- Dayan, E., Censor, N., Buch, E. R., Sandrini, M., & Cohen, L. G. (2013). Noninvasive brain stimulation: from physiology to network dynamics and back. *Nat Neurosci*, 16(7), 838-844.
- Dayan, E., & Cohen, L. G. (2011). Neuroplasticity subserving motor skill learning. *Neuron*, 72(3), 443-454.

- Dayan, E., Laor-Maayany, R., & Censor, N. (2016). Reward disrupts reactivated human skill memory. *Sci Rep*, 6, 28270.
- de Berker, A. O., Bikson, M., & Bestmann, S. (2013). Predicting the behavioral impact of transcranial direct current stimulation: issues and limitations. *Front Hum Neurosci*, 7, 613.
- de Berker, A. O., Rutledge, R. B., Mathys, C., Marshall, L., Cross, G. F., Dolan, R. J., & Bestmann, S. (2016). Computations of uncertainty mediate acute stress responses in humans. *Nat Commun*, 7, 10996.
- Debas, K., Carrier, J., Orban, P., Barakat, M., Lungu, O., Vandewalle, G., . . . Doyon, J. (2010). Brain plasticity related to the consolidation of motor sequence learning and motor adaptation. *Proc Natl Acad Sci U S A*, 107(41), 17839-17844.
- Diedrichsen, J., & Kornysheva, K. (2015). Motor skill learning between selection and execution. *Trends Cogn Sci*, 19(4), 227-233.
- Duque, J., Murase, N., Celnik, P., Hummel, F., Harris-Love, M., Mazzocchio, R., . . . Cohen, L. G. (2007). Intermanual Differences in movement-related interhemispheric inhibition. *J Cogn Neurosci*, 19(2), 204-213.
- Finkel, E. J., Eastwick, P. W., & Reis, H. T. (2015). Best research practices in psychology: Illustrating epistemological and pragmatic considerations with the case of relationship science. *J Pers Soc Psychol*, 108(2), 275-297.
- Fitz, N. S., & Reiner, P. B. (2015). The challenge of crafting policy for do-it-yourself brain stimulation. *J Med Ethics*, 41(5), 410-412.
- Foerster, A., Rocha, S., Wiesiolek, C., Chagas, A. P., Machado, G., Silva, E., . . . Monte-Silva, K. (2013). Site-specific effects of mental practice combined with transcranial direct current stimulation on motor learning. *European Journal of Neuroscience*, 37(5), 786-794.
- Fritsch, B., Reis, J., Martinowich, K., Schambra, H. M., Ji, Y., Cohen, L. G., & Lu, B. (2010). Direct current stimulation promotes BDNF-dependent synaptic plasticity: Potential implications for motor learning. *Neuron*, 66(2), 198-204.
- Gais, S., Albouy, G., Boly, M., Dang-Vu, T. T., Darsaud, A., Desseilles, M., . . . Peigneux, P. (2007). Sleep transforms the cerebral trace of declarative memories. *Proc Natl Acad Sci U S A*, 104(47), 18778-18783.
- Galea, J. M., Jayaram, G., Ajagbe, L., & Celnik, P. (2009). Modulation of cerebellar excitability by polarity-specific noninvasive direct current stimulation. *J Neurosci*, 29(28), 9115-9122.
- Galea, J. M., Vazquez, A., Pasricha, N., Orban De Xivry, J. J., & Celnik, P. (2011). Dissociating the roles of the cerebellum and motor cortex during adaptive learning: The motor cortex retains what the cerebellum learns. *Cerebral Cortex*, 21(8), 1761-1770.
- Ghilardi, M. F., Moisello, C., Silvestri, G., Ghez, C., & Krakauer, J. W. (2009). Learning of a sequential motor skill comprises explicit and implicit components that consolidate differently. *J Neurophysiol*, 101(5), 2218-2229.
- Gilbert, D. T., King, G., Pettigrew, S., & Wilson, T. D. (2016). Comment on "Estimating the reproducibility of psychological science". *Science*, 351(6277), 1037.
- Goodman, S. N., Fanelli, D., & Ioannidis, J. P. (2016). What does research reproducibility mean? *Sci Transl Med*, 8(341), 341ps312.

- Goodwill, A. M., Reynolds, J., Daly, R. M., & Kidgell, D. J. (2013). Formation of cortical plasticity in older adults following tDCS and motor training. *Frontiers in Aging Neuroscience*, 5(DEC).
- Hamada, M., Murase, N., Hasan, A., Balaratnam, M., & Rothwell, J. C. (2013). The role of interneuron networks in driving human motor cortical plasticity. *Cereb Cortex*, 23(7), 1593-1605.
- Hardwick, R. M., & Celnik, P. A. (2014). Cerebellar direct current stimulation enhances motor learning in older adults. *Neurobiology of Aging*, 35(10), 2217-2221.
- Hashemirad, F., Zoghi, M., Fitzgerald, P. B., & Jaberzadeh, S. (2016). The effect of anodal transcranial direct current stimulation on motor sequence learning in healthy individuals: A systematic review and meta-analysis. *Brain Cogn*, 102, 1-12.
- Herzfeld, D. J., Pastor, D., Haith, A. M., Rossetti, Y., Shadmehr, R., & O'Shea, J. (2014). Contributions of the cerebellum and the motor cortex to acquisition and retention of motor memories. *NeuroImage*, 98, 147-158.
- Hoff, M., Kaminski, E., Rjosk, V., Sehm, B., Steele, C. J., Villringer, A., & Ragert, P. (2015). Augmenting mirror visual feedback-induced performance improvements in older adults. *European Journal of Neuroscience*, 41(11), 1475-1483.
- Horvath, J. C., Forte, J. D., & Carter, O. (2015a). Evidence that transcranial direct current stimulation (tDCS) generates little-to-no reliable neurophysiologic effect beyond MEP amplitude modulation in healthy human subjects: A systematic review. *Neuropsychologia*, 66, 213-236.
- Horvath, J. C., Forte, J. D., & Carter, O. (2015b). Quantitative Review Finds No Evidence of Cognitive Effects in Healthy Populations From Single-session Transcranial Direct Current Stimulation (tDCS). *Brain Stimul*, 8(3), 535-550.
- Horvath, J. C., Vogrin, S. J., Carter, O., Cook, M. J., & Forte, J. D. (2016). Effects of a common transcranial direct current stimulation (tDCS) protocol on motor evoked potentials found to be highly variable within individuals over 9 testing sessions. *Exp Brain Res*.
- Hummel, F. C., Heise, K., Celnik, P., Floel, A., Gerloff, C., & Cohen, L. G. (2010). Facilitating skilled right hand motor function in older subjects by anodal polarization over the left primary motor cortex. *Neurobiology of Aging*, 31(12), 2160-2168.
- Hunter, T., Sacco, P., Nitsche, M. A., & Turner, D. L. (2009). Modulation of internal model formation during force field-induced motor learning by anodal transcranial direct current stimulation of primary motor cortex. *Journal of Physiology*, 587(12), 2949-2961.
- Jahanshahi, M., & Rothwell, J. (2000). Transcranial magnetic stimulation studies of cognition: an emerging field. *Exp Brain Res*, 131(1), 1-9.
- Johnen, V. M., Neubert, F. X., Buch, E. R., Verhagen, L., O'Reilly, J. X., Mars, R. B., & Rushworth, M. F. (2015). Causal manipulation of functional connectivity in a specific neural pathway during behaviour and at rest. *Elife*, 4.
- Kang, E. K., & Paik, N. J. (2011). Effect of a tDCS electrode montage on implicit motor sequence learning in healthy subjects. *Experimental and Translational Stroke Medicine*, 3(1).
- Kantak, S. S., Mummidisetty, C. K., & Stinear, J. W. (2012). Primary motor and premotor cortex in implicit sequence learning - Evidence for competition between implicit and explicit human motor memory systems. *European Journal of Neuroscience*, 36(5), 2710-2715.

- Karok, S., & Witney, A. G. (2013). Enhanced motor learning following task-concurrent dual transcranial direct current stimulation. *PLoS ONE*, 8(12).
- Kidgell, D. J., Goodwill, A. M., Frazer, A. K., & Daly, R. M. (2013). Induction of cortical plasticity and improved motor performance following unilateral and bilateral transcranial direct current stimulation of the primary motor cortex. *BMC Neuroscience*, 14.
- Krakauer, J. W., Ghilardi, M. F., & Ghez, C. (1999). Independent learning of internal models for kinematic and dynamic control of reaching. *Nat Neurosci*, 2(11), 1026-1031.
- Krakauer, J. W., & Mazzoni, P. (2011). Human sensorimotor learning: adaptation, skill, and beyond. *Curr Opin Neurobiol*, 21(4), 636-644.
- Krakauer, J. W., & Shadmehr, R. (2006). Consolidation of motor memory. *Trends Neurosci*, 29(1), 58-64.
- Krause, V., Meier, A., Dinkelbach, L., & Pollok, B. (2016). Beta band transcranial alternating (tACS) and direct current stimulation (tDCS) applied after initial learning facilitate retrieval of a motor sequence. *Frontiers in Behavioral Neuroscience*, 10(JAN).
- Kuo, H. I., Bikson, M., Datta, A., Minhas, P., Paulus, W., Kuo, M. F., & Nitsche, M. A. (2013). Comparing cortical plasticity induced by conventional and high-definition 4 x 1 ring tDCS: a neurophysiological study. *Brain Stimul*, 6(4), 644-648.
- Kuo, M. F., Unger, M., Liebetanz, D., Lang, N., Tergau, F., Paulus, W., & Nitsche, M. A. (2008). Limited impact of homeostatic plasticity on motor learning in humans. *Neuropsychologia*, 46(8), 2122-2128.
- Labruna, L., Jamil, A., Fresnoza, S., Batsikadze, G., Kuo, M. F., Vanderschelden, B., . . . Nitsche, M. A. (2016). Efficacy of Anodal Transcranial Direct Current Stimulation is Related to Sensitivity to Transcranial Magnetic Stimulation. *Brain Stimul*, 9(1), 8-15.
- Landi, S. M., Baguear, F., & Della-Maggiore, V. (2011). One week of motor adaptation induces structural changes in primary motor cortex that predict long-term memory one year later. *Journal of Neuroscience*, 31(33), 11808-11813.
- Lang, N., Nitsche, M. A., Sommer, M., Tergau, F., & Paulus, W. (2003). Modulation of motor consolidation by external DC stimulation. *Suppl Clin Neurophysiol*, 56, 277-281.
- Lauer, M. S., Krumholz, H. M., & Topol, E. J. (2015). Time for a prepublication culture in clinical research? *Lancet*, 386(10012), 2447-2449.
- López-Alonso, V., Cheeran, B., & Fernández-Del-Olmo, M. (2015). Relationship between non-invasive brain stimulation-induced plasticity and capacity for motor learning. *Brain Stimulation*, 8(6), 1209-1219.
- Lopez-Alonso, V., Fernandez-Del-Olmo, M., Costantini, A., Gonzalez-Henriquez, J. J., & Cheeran, B. (2015). Intra-individual variability in the response to anodal transcranial direct current stimulation. *Clin Neurophysiol*, 126(12), 2342-2347.
- Mancuso, L. E., Ilieva, I. P., Hamilton, R. H., & Farah, M. J. (2016). Does Transcranial Direct Current Stimulation Improve Healthy Working Memory?: A Meta-analytic Review. *J Cogn Neurosci*, 28(8), 1063-1089.
- Manenti, R., Sandrini, M., Brambilla, M., & Cotelli, M. (2016). The optimal timing of stimulation to induce long-lasting positive effects on episodic memory in physiological aging. *Behav Brain Res*, 311, 81-86.
- Marshall, L., & Born, J. (2007). The contribution of sleep to hippocampus-dependent memory consolidation. *Trends Cogn Sci*, 11(10), 442-450.

- Marshall, L., Helgadottir, H., Molle, M., & Born, J. (2006). Boosting slow oscillations during sleep potentiates memory. *Nature*, 444(7119), 610-613.
- Martin, D. M., Liu, R., Alonzo, A., Green, M., & Loo, C. K. (2014). Use of transcranial direct current stimulation (tDCS) to enhance cognitive training: effect of timing of stimulation. *Exp Brain Res*, 232(10), 3345-3351.
- Matsuo, A., Maeoka, H., Hiyamizu, M., Shomoto, K., Morioka, S., & Seki, K. (2011). Enhancement of precise hand movement by transcranial direct current stimulation. *NeuroReport*, 22(2), 78-82.
- Monte-Silva, K., Kuo, M. F., Hessenthaler, S., Fresnoza, S., Liebetanz, D., Paulus, W., & Nitsche, M. A. (2013). Induction of late LTP-like plasticity in the human motor cortex by repeated non-invasive brain stimulation. *Brain Stimul*, 6(3), 424-432.
- Morey, R. D., Chambers, C. D., Etchells, P. J., Harris, C. R., Hoekstra, R., Lakens, D., . . . Zwaan, R. A. (2016). The Peer Reviewers' Openness Initiative: incentivizing open research practices through peer review. *R Soc Open Sci*, 3(1), 150547.
- Muellbacher, W., Ziemann, U., Wissel, J., Dang, N., Kofler, M., Facchini, S., . . . Hallett, M. (2002). Early consolidation in human primary motor cortex. *Nature*, 415(6872), 640-644.
- Muller-Dahlhaus, F., & Ziemann, U. (2015). Metaplasticity in human cortex. *Neuroscientist*, 21(2), 185-202.
- Naros, G., Geyer, M., Koch, S., Mayr, L., Ellinger, T., Grimm, F., & Gharabaghi, A. (2016). Enhanced motor learning with bilateral transcranial direct current stimulation: Impact of polarity or current flow direction? *Clinical Neurophysiology*, 127(4), 2119-2126.
- Nettekoven, C., Volz, L. J., Leimbach, M., Pool, E. M., Rehme, A. K., Eickhoff, S. B., . . . Grefkes, C. (2015). Inter-individual variability in cortical excitability and motor network connectivity following multiple blocks of rTMS. *NeuroImage*, 118, 209-218.
- Nitsche, M. A., Bikson, M., & Bestmann, S. (2015). On the Use of Meta-analysis in Neuromodulatory Non-invasive Brain Stimulation. *Brain Stimul*, 8(3), 666-667.
- Nitsche, M. A., Cohen, L. G., Wassermann, E. M., Priori, A., Lang, N., Antal, A., . . . Pascual-Leone, A. (2008). Transcranial direct current stimulation: State of the art 2008. *Brain Stimul*, 1(3), 206-223.
- Nitsche, M. A., Jakoubkova, M., Thirugnanasambandam, N., Schmalfuss, L., Hulleman, S., Sonka, K., . . . Happe, S. (2010). Contribution of the premotor cortex to consolidation of motor sequence learning in humans during sleep. *Journal of Neurophysiology*, 104(5), 2603-2614.
- Nitsche, M. A., & Paulus, W. (2001). Sustained excitability elevations induced by transcranial DC motor cortex stimulation in humans. *Neurology*, 57(10), 1899-1901.
- Nitsche, M. A., Schauenburg, A., Lang, N., Liebetanz, D., Exner, C., Paulus, W., & Tergau, F. (2003). Facilitation of implicit motor learning by weak transcranial direct current stimulation of the primary motor cortex in the human. *Journal of Cognitive Neuroscience*, 15(4), 619-626.
- Nosek, B. A., Alter, G., Banks, G. C., Borsboom, D., Bowman, S. D., Breckler, S. J., . . . Yarkoni, T. (2015). SCIENTIFIC STANDARDS. Promoting an open research culture. *Science*, 348(6242), 1422-1425.

- Orban de Xivry, J. J., Marko, M. K., Pekny, S. E., Pastor, D., Izawa, J., Celnik, P., & Shadmehr, R. (2011). Stimulation of the human motor cortex alters generalization patterns of motor learning. *J Neurosci*, 31(19), 7102-7110.
- Orban de Xivry, J. J., & Shadmehr, R. (2014). Electrifying the motor engram: effects of tDCS on motor learning and control. *Exp Brain Res*, 232(11), 3379-3395.
- Perceval, G., Floel, A., & Meinzer, M. (2016). Can transcranial direct current stimulation counteract age-associated functional impairment? *Neurosci Biobehav Rev*, 65, 157-172.
- Pollok, B., Boysen, A. C., & Krause, V. (2015). The effect of transcranial alternating current stimulation (tACS) at alpha and beta frequency on motor learning. *Behavioural Brain Research*, 293, 234-240.
- Reis, J., Fischer, J. T., Prichard, G., Weiller, C., Cohen, L. G., & Fritsch, B. (2015). Time- but not sleep-dependent consolidation of tDCS-enhanced visuomotor skills. *Cereb Cortex*, 25(1), 109-117.
- Reis, J., Robertson, E., Krakauer, J. W., Rothwell, J., Marshall, L., Gerloff, C., . . . Cohen, L. G. (2008). Consensus: "Can tDCS and TMS enhance motor learning and memory formation?". *Brain Stimul*, 1(4), 363-369.
- Reis, J., Schambra, H. M., Cohen, L. G., Buch, E. R., Fritsch, B., Zarahn, E., . . . Krakauer, J. W. (2009). Noninvasive cortical stimulation enhances motor skill acquisition over multiple days through an effect on consolidation. *Proceedings of the National Academy of Sciences of the United States of America*, 106(5), 1590-1595.
- Riggall, K., Forlini, C., Carter, A., Hall, W., Weier, M., Partridge, B., & Meinzer, M. (2015). Researchers' perspectives on scientific and ethical issues with transcranial direct current stimulation: An international survey. *Sci Rep*, 5, 10618.
- Saiote, C., Polanía, R., Rosenberger, K., Paulus, W., & Antal, A. (2013). High-Frequency TRNS Reduces BOLD Activity during Visuomotor Learning. *PLoS ONE*, 8(3).
- Sandrini, M., Censor, N., Mishoe, J., & Cohen, L. G. (2013). Causal role of prefrontal cortex in strengthening of episodic memories through reconsolidation. *Curr Biol*, 23(21), 2181-2184.
- Sandrini, M., Cohen, L. G., & Censor, N. (2015). Modulating reconsolidation: a link to causal systems-level dynamics of human memories. *Trends Cogn Sci*, 19(8), 475-482.
- Sandrini, M., Umiltà, C., & Rusconi, E. (2011). The use of transcranial magnetic stimulation in cognitive neuroscience: a new synthesis of methodological issues. *Neurosci Biobehav Rev*, 35(3), 516-536.
- Saucedo-Marquez, C. M., Zhang, X., Swinnen, S. P., Meesen, R., & Wenderoth, N. (2013). Task-specific effect of transcranial direct current stimulation on motor learning. *Frontiers in Human Neuroscience*(JUN).
- Schambra, H. M., Abe, M., Luckenbaugh, D. A., Reis, J., Krakauer, J. W., & Cohen, L. G. (2011). Probing for hemispheric specialization for motor skill learning: A transcranial direct current stimulation study. *Journal of Neurophysiology*, 106(2), 652-661.
- Scholz, J., Klein, M. C., Behrens, T. E., & Johansen-Berg, H. (2009). Training induces changes in white-matter architecture. *Nat Neurosci*, 12(11), 1370-1371.
- Shadmehr, R., Smith, M. A., & Krakauer, J. W. (2010). Error correction, sensory prediction, and adaptation in motor control. *Annu Rev Neurosci*, 33, 89-108.
- Shah, B., Nguyen, T. T., & Madhavan, S. (2013). Polarity independent effects of cerebellar tDCS on short term ankle visuomotor learning. *Brain Stimulation*, 6(6), 966-968.

- Shiozawa, P., Fregni, F., Bensenor, I. M., Lotufo, P. A., Berlim, M. T., Daskalakis, J. Z., . . . Brunoni, A. R. (2014). Transcranial direct current stimulation for major depression: an updated systematic review and meta-analysis. *Int J Neuropsychopharmacol*, 17(9), 1443-1452.
- Shmuelof, L., Krakauer, J. W., & Mazzoni, P. (2012). How is a motor skill learned? Change and invariance at the levels of task success and trajectory control. *J Neurophysiol*, 108(2), 578-594.
- Silvanto, J., Cattaneo, Z., Battelli, L., & Pascual-Leone, A. (2008). Baseline cortical excitability determines whether TMS disrupts or facilitates behavior. *J Neurophysiol*, 99(5), 2725-2730.
- Smith, M. A., Brandt, J., & Shadmehr, R. (2000). Motor disorder in Huntington's disease begins as a dysfunction in error feedback control. *Nature*, 403(6769), 544-549.
- Song, S., & Cohen, L. G. (2014). Practice and sleep form different aspects of skill. *Nat Commun*, 5, 3407.
- Sriraman, A., Oishi, T., & Madhavan, S. (2014). Timing-dependent priming effects of tDCS on ankle motor skill learning. *Brain Research*, 1581, 23-29.
- Stagg, C. J., Bachtiar, V., & Johansen-Berg, H. (2011). The role of GABA in human motor learning. *Current Biology*, 21(6), 480-484.
- Stagg, C. J., Jayaram, G., Pastor, D., Kincses, Z. T., Matthews, P. M., & Johansen-Berg, H. (2011). Polarity and timing-dependent effects of transcranial direct current stimulation in explicit motor learning. *Neuropsychologia*, 49(5), 800-804.
- Stickgold, R. (2005). Sleep-dependent memory consolidation. *Nature*, 437(7063), 1272-1278.
- Tecchio, F., Zappasodi, F., Assenza, G., Tombini, M., Vollaro, S., Barbati, G., & Rossini, P. M. (2010). Anodal transcranial direct current stimulation enhances procedural consolidation. *Journal of Neurophysiology*, 104(2), 1134-1140.
- Vannorsdall, T. D., van Steenburgh, J. J., Schretlen, D. J., Jayatillake, R., Skolasky, R. L., & Gordon, B. (2016). Reproducibility of tDCS Results in a Randomized Trial: Failure to Replicate Findings of tDCS-Induced Enhancement of Verbal Fluency. *Cogn Behav Neurol*, 29(1), 11-17.
- Vines, B. W., Cerruti, C., & Schlaug, G. (2008). Dual-hemisphere tDCS facilitates greater improvements for healthy subjects' non-dominant hand compared to uni-hemisphere stimulation. *BMC Neuroscience*, 9.
- Wade, S., & Hammond, G. (2015). Anodal transcranial direct current stimulation over premotor cortex facilitates observational learning of a motor sequence. *European Journal of Neuroscience*, 41(12), 1597-1602.
- Walker, M. P., Brakefield, T., Hobson, J. A., & Stickgold, R. (2003). Dissociable stages of human memory consolidation and reconsolidation. *Nature*, 425(6958), 616-620.
- Wassermann, E. M., Tormos, J. M., & Pascual-Leone, A. (1998). Finger movements induced by transcranial magnetic stimulation change with hand posture, but not with coil position. *Hum Brain Mapp*, 6(5-6), 390-393.
- Waters-Metenier, S., Husain, M., Wiestler, T., & Diedrichsen, J. (2014). Bihemispheric transcranial direct current stimulation enhances effector-independent representations of motor synergy and sequence learning. *Journal of Neuroscience*, 34(3), 1037-1050.

- Wessel, M. J., Zimerman, M., Timmermann, J. E., Heise, K. F., Gerloff, C., & Hummel, F. C. (2016). Enhancing Consolidation of a New Temporal Motor Skill by Cerebellar Noninvasive Stimulation. *Cereb Cortex*, 26(4), 1660-1667.
- Wexler, A. (2016). The practices of do-it-yourself brain stimulation: implications for ethical considerations and regulatory proposals. *J Med Ethics*, 42(4), 211-215.
- Wiethoff, S., Hamada, M., & Rothwell, J. C. (2014). Variability in response to transcranial direct current stimulation of the motor cortex. *Brain Stimul*, 7(3), 468-475.
- Wolpert, D. M., Diedrichsen, J., & Flanagan, J. R. (2011). Principles of sensorimotor learning. *Nat Rev Neurosci*, 12(12), 739-751.
- Woods, A. J., Antal, A., Bikson, M., Boggio, P. S., Brunoni, A. R., Celnik, P., . . . Nitsche, M. A. (2016). A technical guide to tDCS, and related non-invasive brain stimulation tools. *Clin Neurophysiol*, 127(2), 1031-1048.
- Wymbs, N. F., Bastian, A. J., & Celnik, P. A. (2016). Motor Skills Are Strengthened through Reconsolidation. *Curr Biol*, 26(3), 338-343.
- Zhu, F. F., Yeung, A. Y., Poolton, J. M., Lee, T. M. C., Leung, G. K. K., & Masters, R. S. W. (2015). Cathodal transcranial direct current stimulation over left dorsolateral prefrontal cortex area promotes implicit motor learning in a golf putting task. *Brain Stimulation*, 8(4), 784-786.
- Zimerman, M., Heise, K. F., Gerloff, C., Cohen, L. G., & Hummel, F. C. (2014). Disrupting the ipsilateral motor cortex interferes with training of a complex motor task in older adults. *Cereb Cortex*, 24(4), 1030-1036.
- Zimerman, M., Nitsch, M., Giraux, P., Gerloff, C., Cohen, L. G., & Hummel, F. C. (2013). Neuroenhancement of the aging brain: Restoring skill acquisition in old subjects. *Annals of Neurology*, 73(1), 10-15.