



## Original article

# Pathways From Family Disadvantage via Abusive Parenting and Caregiver Mental Health to Adolescent Health Risks in South Africa



Franziska Meinck, D.Phil.<sup>a,\*</sup>, Lucie Dale Cluver, D.Phil.<sup>a,b</sup>, Frederick Mark Orkin, Ph.D.<sup>c</sup>, Caroline Kuo, D.Phil.<sup>b,d</sup>, Amogh Dhar Sharma, M.Sc.<sup>e</sup>, Imca Sifra Hensels, M.Sc.<sup>f</sup>, and Lorraine Sherr, Ph.D.<sup>f</sup>

<sup>a</sup> Department of Social Policy and Intervention, Centre for Evidence-Based Intervention, University of Oxford, Oxford, United Kingdom

<sup>b</sup> Department of Psychiatry and Mental Health, Groote Schuur Hospital, University of Cape Town, Cape Town, South Africa

<sup>c</sup> School of Clinical Medicine, Faculty of Health Sciences, University of the Witwatersrand, Johannesburg, South Africa

<sup>d</sup> Department of Behavioral and Social Sciences, Centre for Alcohol and Addiction Studies, Brown University School of Public Health, Rhode Island

<sup>e</sup> Department of International Development, University of Oxford, Oxford, United Kingdom

<sup>f</sup> Department of Infection and Population Health, Royal Free Hospital, University College London, London, United Kingdom

**Article history:** Received January 10, 2016; Accepted August 10, 2016

**Keywords:** Risk factors; Parenting; Adolescent health; AIDS; South Africa; Adolescent abuse; Mental health; Adolescent behavior

---

 A B S T R A C T

**Purpose:** Adolescent health is a major concern in low- and middle-income countries, but little is known about its predictors. Family disadvantage and abusive parenting may be important factors associated with adolescent psychological, behavioral, and physical health outcomes. This study, based in South Africa, aimed to develop an empirically based theoretical model of relationships between family factors such as deprivation, illness, parenting, and adolescent health outcomes.

**Methods:** Cross-sectional data were collected in 2009–2010 from 2,477 adolescents (aged 10–17) and their caregivers using stratified random sampling in KwaZulu-Natal, South Africa. Participants reported on sociodemographics, psychological symptoms, parenting, and physical health. Multivariate regressions were conducted, confirmatory factor analysis employed to identify measurement models, and a structural equation model developed.

**Results:** The final model demonstrated that family disadvantage (caregiver AIDS illness and poverty) was associated with increased abusive parenting. Abusive parenting was in turn associated with higher adolescent health risks. Additionally, family disadvantage was directly associated with caregiver mental health distress which increased adolescent health risks. There was no direct effect of family disadvantage on adolescent health risks but indirect effects through caregiver mental health distress and abusive parenting were found.

**Conclusions:** Reducing family disadvantage and abusive parenting is essential in improving adolescent health in South Africa. Combination interventions could include poverty and violence reduction, access to health care, mental health services for caregivers and adolescents, and positive

**IMPLICATIONS AND CONTRIBUTION**

This study examined factors associated with health risks in South African adolescents and associations. The path model showed a double mediation from family disadvantage via abusive parenting or caregiver mental health to adolescent health risk. These findings show the need for combination interventions to support families to improve adolescent health outcomes.

**Conflicts of Interest:** The analyses for this paper were funded by UNICEF Innocenti (grant no. 2220A009001002); however, UNICEF Innocenti had no role in the design, analysis, or interpretation of this study. The authors have no competing interests.

**Disclaimer:** The views expressed are those of the authors and do not necessarily represent the views of UNICEF.

\* Address correspondence to: Franziska Meinck, D.Phil., Department of Social Policy and Intervention, Centre for Evidence-Based Intervention, University of Oxford, Oxford OX1 2ER, United Kingdom.

E-mail address: [franziska.meinck@spi.ox.ac.uk](mailto:franziska.meinck@spi.ox.ac.uk) (F. Meinck).

parenting support. Such combination packages can improve caregiver and child outcomes by reducing disadvantage and mitigating negative pathways from disadvantage among highly vulnerable families.

© 2016 Society for Adolescent Health and Medicine. Published by Elsevier Inc. This is an open access article under the CC BY license (<http://creativecommons.org/licenses/by/4.0/>).

Each year, 1.4 million adolescents worldwide die due to violence, suicide, and other health complications [1]. Adolescent mental and physical health is a major concern in low- and middle-income countries (LMIC). Country and region-specific research is needed as factors such as unemployment and illness, and in particular, large epidemics such as HIV, malaria, or tuberculosis, may play bigger roles where less comprehensive welfare provisions are available. In sub-Saharan Africa, adolescents are a particular at-risk group with high rates of violence exposure, large gender and health inequalities, and low life expectancy [1]. A growing body of international evidence suggests that family disadvantage such as poverty, interpersonal conflict, disability, and chronic illness drive child abuse victimization [2]. Other evidence suggests that family disadvantage and child abuse are associated with major negative outcomes for adolescents in health, development, and economic capacities [3]. However, research on adolescents in the region has focused primarily on risk behaviors surrounding HIV transmission [4].

In recent years, there has been an upsurge in interest on the importance of parenting and abuse for adolescent outcomes [5], with evidence almost exclusively from high-income countries (HIC). There are many different definitions of child abuse. This paper follows the definition within the South African Children's Act 38 (2005) which defines child abuse as "any form of harm or ill-treatment deliberately inflicted on a child and includes assaulting a child or inflicting any other form of deliberate injury to a child [...] exposing or subjecting a child to behavior that may harm the child psychologically or emotionally" [6].

In North American and European studies, associations between abusive parenting and adolescent health disadvantages are well established [7]. In contrast to HIC, evidence remains very limited in LMIC. However, there is emerging high-quality evidence from sub-Saharan Africa that focuses on parenting in infancy and early childhood [8]. These studies find linkages between family disadvantage, poor parenting, and childhood conduct disorders [9], suggesting the importance of testing such associations in adolescence. Research on risk factors for child abuse victimization in adolescent samples in Southern Africa also identified correlations between family disadvantage and child abuse victimization [10]. In fact, family disadvantage may be one of the drivers of violence against children and adolescents.

Evidence from LMIC suggests linkages between family disadvantages and poor caregiver mental health [11]. In turn, caregiver psychological distress such as post-traumatic stress disorder, depression, and anxiety has been shown to affect parenting style and child behavior [12]. However, there is little research on pathways between these, particularly involving adolescents. New research using adolescent samples has identified pathways from household AIDS illness to child abuse victimization mediated by poverty and disability [13]. Such research is rare, and models generally investigate individual relationships between family disadvantage and abusive parenting [14] or

abuse and child outcomes [15]. However, in order to understand points of potential intervention, it is essential to develop and test a theoretically and empirically relevant model of individual and family-level pathways to fully understand family dynamics of disadvantage which can be used to inform the design of family-level interventions.

For adequate policy and programming to address the needs of adolescents in Southern Africa, it is imperative to understand whether particular risk factors, such as family disadvantage, may be associated with abusive parenting. It is also important to establish whether abusive parenting is associated with adolescent health risks and to test pathways by which risk factors for abusive parenting may be associated with adolescent health.

Research thus far has been hampered by the limited availability of large scale data on parenting of adolescents in Southern Africa. Although some household surveys examine parenting behaviors, these have used either parents or children in each household, not data from both, and thus have analytical limitations for identifying complex pathways. For example, parents are not reliable reporters of abusive parenting, while adolescents are often less aware of the extent of their caregiver's psychological distress. Consequently, it was essential to develop a model using data from both caregivers and adolescents.

This study aimed to develop a theoretical pathway model investigating hypothesized associations between hypothesized risk factors and outcomes of abusive parenting. It examines potential pathways (1) from family disadvantage to abusive parenting; (2) from abusive parenting to adolescent physical and mental health risks; and (3) from family disadvantage to adolescent health risks via caregiver mental health distress. A pathway model approach was chosen in order to allow for simultaneous analysis of multiple predictors, intervention variables and outcomes [16].

## Methods

### *Participants and procedures*

A total of 2,477 adolescents aged 10–17 (53.9% female) and their primary caregiver (88.8% female) were interviewed in 2009–2010 (refusal rate <.5%) with most refusals by caregivers. Where either part of the dyad refused, the whole dyad was excluded from participation. One urban and one rural health district with high deprivation and poor health outcomes were randomly selected within KwaZulu-Natal province, South Africa. Within each health district, census enumeration areas were randomly sampled until sample size was reached. In each area, every household was visited and included in the study if they had a resident adolescent. One randomly selected adolescent per household and their primary caregiver were interviewed by staff trained in working with vulnerable youth. Questionnaires and

consent forms were translated and checked with back translation into isiZulu. Utmost care was taken to ensure privacy and confidentiality during the interview process. Different interviewers were assigned to caregiver and child and questionnaires administered in a secluded spot, that is, under a tree behind the house, at the bottom of the garden, or in empty classrooms after school.

Ethical protocols were approved by the review boards of the Universities of Oxford (SSD/CUREC2/09-52) and KwaZulu-Natal (HSS/0254/09) and by the provincial Health (HRKM091/09) and Education Departments (0048/2009). Voluntary informed written consent was obtained from adolescents and primary caregivers, and refreshments and certificates of participation were given to those taking part. Confidentiality was maintained, except where participants were at risk of significant harm or requested assistance. Over the course of the study, 70 referrals were made to child protection, HIV/AIDS and health services, with follow-up support. Concerns and options were discussed with participants immediately, if requested, but otherwise after the completion of the interview, often with additional support from one of the PIs who is a child protection social worker.

### Measures

Family disadvantage was measured as follows: “Poverty” as reported by children was measured using an index of access to the eight highest socially perceived necessities for children in South Africa [17], showing good reliability in this sample ( $\alpha = .84$ ). Necessities included: enough clothes to remain warm and dry, soap to wash every day, three meals per day, a visit to the doctor and medicines when needed, school uniform, school equipment, school fees, and two pairs of shoes. Items were reverse coded and summed to create a poverty index (range 0–8) with higher numbers reflecting increasing levels of poverty. “AIDS-unwell caregivers”: Given low levels of HIV testing and HIV-status knowledge, caregiver AIDS illness as reported by the caregiver themselves was determined using verbal autopsy methods, validated in previous studies of adult mortality in South Africa, (sensitivity 89%; specificity 93%) [18]. In this study, determination of HIV/AIDS required reported HIV+ status or a conservative threshold of  $\geq 3$  AIDS-defining illnesses, that is, Kaposi’s sarcoma, tuberculosis, fungal infections, or shingles. “Caregiver disability” as reported by the caregiver was measured using two items of caregiver report on limitations of their daily physical activity and having to spend a lot of time in bed (0: no; 1: yes). “Adolescent orphanhood” as reported by the caregiver was defined as the death of one or both biological parents (0: no; 1: yes). “Overcrowding and number of adults in the household” were measured using a household map drawn by the child identifying all persons living in the house. Overcrowding was defined as a household with more than three people per room as per United Nations Humans Settlements Program (UN-HABITAT) definition.

Caregiver mental health distress was measured using caregiver self-report. *Depression* was measured using the Center for Epidemiological Studies Depression Scale (CES-D, 20 items) [19]. The CES-D has been previously used in multiple South African populations [20]. Internal consistency was high ( $\alpha = .95$ ). *Post-traumatic stress disorder* was measured using the Harvard Trauma Questionnaire (30 item) (HTQ). The HTQ has been previously validated in South Africa [20] and showed high internal

reliability ( $\alpha = .94$ ). *Caregiver Anxiety* was measured using the Beck Anxiety Inventory (BAI) [21]. The BAI (21 items) has high internal consistency ( $\alpha = .95$ ) in this sample and has been validated in South Africa [22]. Each individual scale was summed to create a scale score: CES-D (range 0–60), HTQ (range 0–64), and BAI (range 0–63) with higher scores reflecting higher burden of psychological distress.

Abusive parenting in the past year as reported by adolescents was measured using five items from the United Nations Children’s Fund (UNICEF) scales for national monitoring of orphans and vulnerable children [23]. *Physical abuse* was defined as any hitting or slapping so that it hurt, and *emotional abuse* was insulting, shaming, or threatening the adolescent. Internal consistency was good in this sample ( $\alpha = .72$ ).

Adolescent health risk was assessed on three domains of mental health, physical health, and problem behavior, all using adolescent self-report. *Adolescent mental health* was measured using an index created of the total sum scores of the Children’s Depression Inventory [24] (range 0–12), the Revised Children’s Manifest Anxiety Scale [25] (range 0–14), the Child PTSD checklist [26] (range 0–68), and the Mini International Psychiatric Interview for Children and Adolescents [27] (range 0–68). The Children’s Depression Inventory has been used previously in South Africa [28] and had acceptable internal reliability in this sample ( $\alpha = .65$ ). The Revised Children’s Manifest Anxiety Scale has been validated in South Africa [29] and showed good internal consistency in this sample ( $\alpha = .84$ ). The PTSD checklist has also been validated in South Africa [30] and showed good internal consistency in this sample ( $\alpha = .96$ ). The Mini International Psychiatric Interview for Children and Adolescents has also previously been used in South Africa [28] and showed good internal consistency in this sample ( $\alpha = .85$ ). Items were summed into a total score with higher scores reflecting increased mental health distress. *Adolescent physical ill health* was measured as any prevalence of the five most common illnesses among youth: worms, flu, pneumonia, vomiting, or tuberculosis in the past month and summed into an index (range 0–5) with higher scores reflecting increased number of illnesses. *Adolescent behavior problems* were measured using the delinquency subscale from the Child Behavior Checklist [31] which has been used previously in South Africa [29] and showed acceptable internal consistency in this sample ( $\alpha = .64$ ). Items were summed to a total score (range 0–15) with higher numbers reflecting increased conduct problems.

Sociodemographics including adolescent and caregiver age and gender and caregiver child relationship (biological parent and biological grandparent), number of adults and children in the household, and presence of both versus one parent in the household were measured using items modeled on the South African census.

### Analyses

Due to the paucity of multi-stage models in the literature on parenting and child outcomes, a detailed model was not hypothesized in advance. Instead, a sequential model-building process was followed [16] in four steps. First, in order to indicate which potential predictors to include, correlations between hypothesized variables and adolescent health risks were explored. All significant variables were included in a multivariate model. Variables that were associated with adolescent health risks were included in latent constructs. Second, measurement

models for each latent construct were examined using confirmatory factor analysis within the structural equation modeling package. Third, the resulting latent constructs were all included into a model with all potential pathways, one variable with a factor loading of  $<.2$  was dropped. Nonsignificant pathways were dropped and small modifications made to improve model fit, such as respecification of covariance between control variables [16]. This resulted in a final model with four latent constructs: family disadvantage, abusive parenting, caregiver mental health distress, and adolescent health risk.

Analyses were conducted in SPSS 22 and in Amos 22 (IBM Corporation, Armonk, NY) using maximum likelihood estimation. As some variables were nonnormally distributed, all parameters were estimated using the bootstrapping procedure with 5,000 bootstrapped samples. Model fit was evaluated primarily using  $\chi^2/df$ . By convention, the maximum acceptable value for  $\chi^2/df$  is 5 [16]. Additionally, root mean square error of approximation (RMSEA), standardized root mean residual (SRMR), and comparative fit index (CFI) are reported. For SRMR and RMSEA, a value of .05 or less indicates good fit. For CFI, a value of .95 or greater indicates good fit [16].

## Results

### Sociodemographic characteristics

Descriptive statistics for all sociodemographic variables and outcomes are summarized in Table 1. Median age was 42 years for caregivers and 14 years for adolescents. Adolescents (53.9%) and 88.9% of caregivers were female; 27.4% of caregivers were AIDS ill and 11.1% suffered from impairing disabilities. Families lacked a mean of 1.5 household necessities, with 32.1% lacking more than two basic necessities; 33.6% of adolescents were

orphaned (23.6% paternal, 15.6% maternal, and 5.6% double orphaned); 66.1% adolescents were looked after by a biological parent and 18.5% by their biological grandparent, 23.1% lived with biological mother and father. Households contained a mean of 2.1 adults with 5.1% reporting overcrowding.

Adolescents (42.8%) reported at least one instance of physical or emotional abuse victimization in the past year, a median of one illness in the past month.

### Bivariate analysis

Using bivariate correlations, adolescent health risk was associated with caregiver is a biological parent, caregiver is a biological grandparent, caregiver age, poverty, caregiver AIDS illness, caregiver disability, child orphanhood, abusive parenting, caregiver PTSD, anxiety, and depression.

Not associated with adolescent health risk was whether the child lived with both parents, caregiver gender, and overcrowding (Appendix 1).

### Regression analyses

Factors significantly associated with adolescent health risk in the bivariate analyses were included in a multivariate linear regression analysis controlling for adolescent age, adolescent, and caregiver gender, and number of children and adults in the household (Table 2).

Adolescent health risk was associated with poverty, caregiver AIDS illness, child orphanhood, abusive parenting, caregiver depression, anxiety, and PTSD.

There was no significant association between adolescent health risks and overcrowding, caregiver disability, caregiver age,

**Table 1**  
Sociodemographic characteristics of the sample adolescent and caregiver report

	Adolescents (n = 2,477)		Caregivers (n = 2,477)	
	Percentage (n)	Median/mean (standard deviation [SD]) standard error (SE)	Percentage (n)	Median/mean (standard deviation [SD]) standard error (SE)
Gender (female)	53.9% (1,334)	—	88.9% (2,199)	—
Age (mean)	—	14.00/13.57, SD 2.23, SE .05	—	44.22/42.00, SD 13.88, SE .28
Caregiver biological parent	66.1% (1,637)	—	—	—
Caregiver biological grandparent	18.5% (458)	—	—	—
Lives with mother and father	23.1%	—	—	—
Harsh parenting				
Physical and emotional abuse 1+/scale	42.8% (1,060)	1.17, SD 1.95, SE .04	—	—
Hypothesized family disadvantage factors				
Number of adults	—	2.00/2.08, SD 1.17, SE .02	—	—
Overcrowding	5.1% (126)	—	—	—
Number of household members	—	6.00/6.00, SD 2.68, SE .05	—	—
Poverty missing 2 or more necessities/scale	32.1% (796)	.00/1.48, SD 2.12, SE .05	—	—
Disability	—	—	11.1% (275)	—
AIDS illness	—	—	27.4% (679)	—
Orphanhood	—	—	33.6% (832)	—
Hypothesized caregiver mental health factors				
Caregiver anxiety	—	—	—	7.00/12.07, SD 12.83, SE .26
Caregiver depression	—	—	—	10.00/13.54, SD 12.31, SE .25
Caregiver PTSD	—	—	—	20.00/21.16, SD 13.47, SE .27
Hypothesized adolescent health risks				
Adolescent mental health	—	8.00/13.18, SD 14.28, SE .29	—	—
Adolescent illnesses	—	1.00/2.03, SD .95, SE .02	—	—
Adolescent behavior	—	.00/.49, SD 1.31, SE .03	—	—



**Table 2**  
Multivariate linear regression model testing associations between adolescent health risk and hypothesized risk factors\*

	Adolescent health risks		
	B	95% Confidence interval	
		Upper bound	Lower bound
(Constant)	–.838	–1.192	–.483
Caregiver is biological grandparent	.013	–.138	.164
Caregiver is biological parent	–.103	–.210	.003
Poverty	<b>.029</b>	<b>.012</b>	<b>.046</b>
Caregiver age	–.001	–.004	.038
Caregiver AIDS illness	<b>.091</b>	<b>.006</b>	<b>.176</b>
Caregiver disability	–.045	–.164	.073
Child orphaned	<b>.216</b>	<b>.134</b>	<b>.298</b>
Abusive parenting	<b>.145</b>	<b>.126</b>	<b>.163</b>
Caregiver PTSD	<b>.008</b>	<b>.005</b>	<b>.011</b>
Caregiver depression	<b>.007</b>	<b>.003</b>	<b>.011</b>
Caregiver anxiety	<b>.010</b>	<b>.006</b>	<b>.013</b>
Child age	.029	.013	.045
Child gender	–.028	–.099	.043
Caregiver gender	–.075	–.187	.038
Number of adults in the home	–.008	–.040	.024
Number of children in the home	.014	–.007	.036

Bold values indicate all factors significantly associated in multivariate regressions at  $p < .05$ .

\* Only those factors significantly associated with adolescent health risk in bivariate analysis (Appendix 1) were included.

and whether the caregiver was a biological parent or grandparent.

#### Measurement models

Measurement models were examined with confirmatory factor analyses to establish the latent constructs for the outcome and all hypothesized variables significantly associated with adolescent health risks.

**Outcome.** The adolescent health risk latent construct was identified by the total scores for mental health (anxiety, depression, suicidality, and posttraumatic stress), physical health, and child behavior.

**Associated factors.** The family disadvantage latent construct was identified by the total score for the poverty scale, caregiver AIDS illness, and child orphanhood. Orphanhood was then dropped from the latent construct due to a low factor loading  $< .20$ . The caregiver mental health latent construct was identified by the total scores for depression, anxiety, and post-traumatic stress. The abusive parenting latent construct was identified by the five individual types of abusive parenting.

#### Structural model

The following latent constructs were accordingly included in the analysis: family disadvantage associated with adolescent health risks, caregiver mental health associated with adolescent health risks, abusive parenting associated with adolescent health risks, and abusive parenting associated with caregiver mental health. Nonsignificant pathways were removed. The final model (Figure 1) shows a double mediation from family disadvantage via abusive parenting and caregiver mental health to adolescent health risk.

The fit of the final model was:  $\chi^2/df = 3.33$ ,  $p < .001$  for  $\chi^2 382.66$ ,  $df = 115$ ; RMSEA .031, SRMR .029, and CFI .954. All fit statistics were excellent, according to the criteria in the Analyses section. The final model accounted for 75% of the variance in adolescent health risks. All analyses controlled for caregiver and adolescent age and gender and number of adults and children in the household.

The following direct effects are noteworthy. Family disadvantage was associated with increased risk for abusive parenting  $\beta = .251$  ( $p < .001$ ) and caregiver mental health distress  $\beta = .614$  ( $p < .001$ ). Abusive parenting was associated with increased adolescent health risk  $\beta = .584$  ( $p < .001$ ). Caregiver mental health distress was also associated with increased adolescent health risk  $\beta = .558$  ( $p < .001$ ).

There was neither a direct effect of family disadvantage on adolescent health risks nor of caregiver mental health distress on abusive parenting.

The indirect effect of family disadvantage on adolescent health risks via abusive parenting was  $\beta = .146$  ( $p < .001$ ) and  $\beta = .343$  ( $p < .001$ ) via caregiver mental health. The total indirect effect of family disadvantage on adolescent health risks was  $\beta = .489$  ( $p < .001$ ).

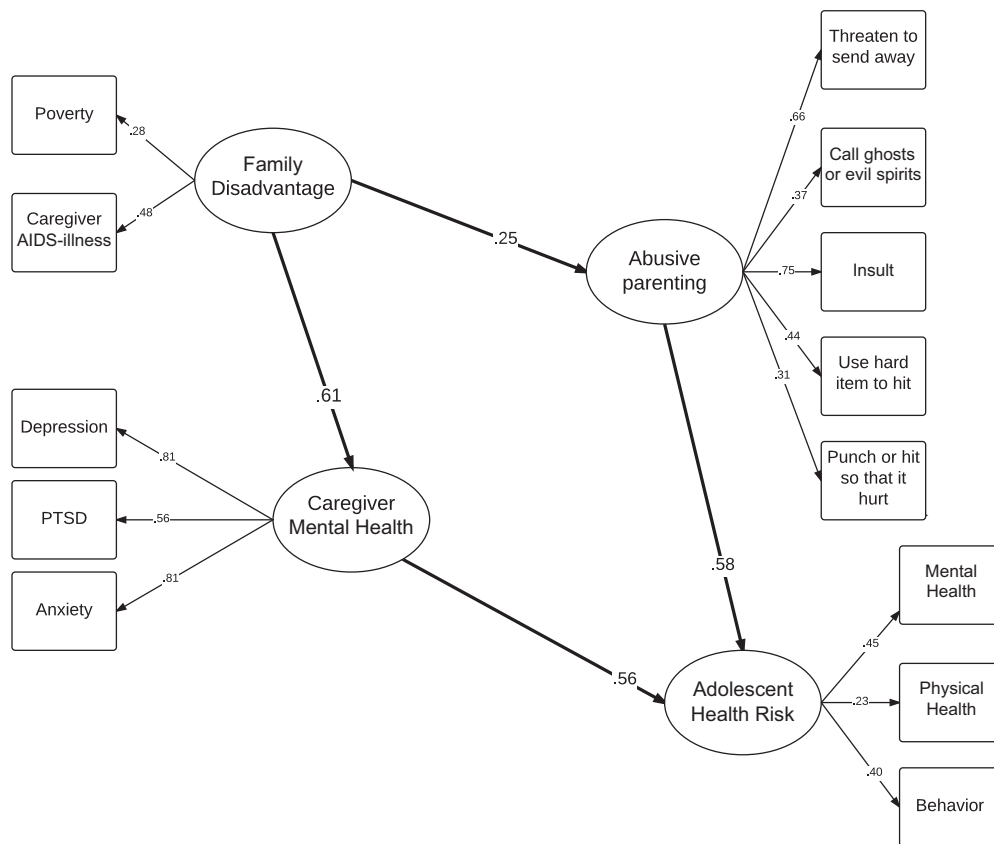
#### Discussion

Improving adolescent health is challenging in all societies. The empirical model developed in this study demonstrates that abusive parenting and caregiver mental health distress mediate the relationship between family disadvantage and adolescent health risks. These findings support a theory of multiple pathways between family disadvantage, parenting behaviors, parent psychosocial distress, and adolescent health outcomes [32] and suggest that good adolescent health is hard to achieve for families in Southern Africa who are experiencing severe family-level challenges. In particular, caregiver AIDS illness and poverty appear to be driving caregiver mental health distress and abusive parenting, adding to previous evidence from South Africa on the impact of AIDS illness on parenting capacity [13]. Findings also extend available literature from HIC on pathways from parenting to child risk behaviors [33].

It is noteworthy that no significant direct effects were found of family disadvantage on adolescent health risks or of caregiver mental health distress on abusive parenting. Other studies—but without the benefit of multiple paths—find strong correlations between caregiver mental health distress and abusive parenting. However, it may be that family disadvantage puts such stress on the family that this is sufficient to lead to abusive parenting and caregiver mental health which negatively affect adolescent health. Overall, findings suggest that ill health, poverty, abusive parenting, and poor caregiver mental health are primarily driving adolescent health risks in this South African sample.

Child orphanhood was not found to be an important contributor to family disadvantage in this study. Future research should examine if differences in caregiving arrangements for orphans and cause or length of orphanhood have a more profound impact on family disadvantage.

This study has several limitations. First, data are cross sectional, and therefore, causality cannot be determined. However, in structural modeling, the attribution of causal order on plausible theoretical grounds is well established [16]. For many of the risk pathways, reverse causality would be unlikely, for example, adolescent health risks do not generally cause family



**Figure 1.** Pathways from family disadvantage to adolescent health outcomes via abusive parenting and caregiver mental health distress.

disadvantage such as caregiver disability. However, for some pathways, bidirectionality is possible, for example, between harsh parenting and adolescent health risks. Further, it is likely that harsh parenting would have occurred as a consistent behavior over the years, but this study is unable to determine whether adolescent health risks are linked to harsh parenting in early childhood or adolescence. Future research using longitudinal designs is needed to distinguish between these links. In particular, the possible cyclical relationship between family disadvantage and caregiver mental health distress needs to be further investigated. While there is strong evidence that people living with disabilities, HIV, and in poverty have poorer mental health [34], there is also evidence that poor mental health increases risky sexual behavior [28] and that poverty is associated with AIDS illness [35].

Second, abusive parenting was measured using child report only, and we were, therefore, unable to triangulate child and caregiver report of physical and emotional abuse. However, parents may be even more likely to underreport children's violence exposure, and thus, child self-report is preferred to parent self-report. Third, sampling included adolescents and their primary caregiver only. The study did not include siblings or other household members and therefore cannot reflect experiences of disadvantage, abusive parenting, and health for other youth or adults in the household. However, measures of household and household size were utilized to give a broader insight into the family. Fourth, this study cannot draw conclusions about the role of fathers in an adolescent's life as 89% of the sampled

primary caregivers were female, although adolescents reported abuse from any caregiver within the household, so fathers or other males living in the household would have been included in this. All analyses controlled for age and gender, and further research could valuably investigate multiple pathways differentiated by child and caregiver gender. Fifth, this study focused solely on potential negative effects of the pathways from family disadvantage to adolescent ill health. It will be of great importance for future research to identify protective factors and protective moderators within the pathway model and to investigate the possible role of positive parenting in this. Finally, this study was not able to identify whether abusive parenting was carried out by the AIDS-ill caregiver or another adult in the household. It is also not able to establish whether vertical HIV transmission may drive the association between AIDS-ill caregiver and adolescent physical illness, although given that this cohort were born 7–14 years before the first introduction of pediatric anti-retroviral medication in South Africa, rates of survival of perinatally infected children would have been low.

Despite the limitations, this study also has notable strengths. To our knowledge, this is the first study to test multiple pathways from family disadvantage to adolescent health outcomes via parenting and caregiver mental health in sub-Saharan Africa. Because of the lack of prior tested models, this research was limited to empirical model building, and future research is needed to test such a model, preferably also in other countries. The sample size was large, and the low refusal rate provided a representative sample of households with adolescents in areas of

high deprivation in South Africa. Importantly, the study used a mix of caregiver and child report, in order to improve reliability of reporting.

Findings have a number of implications for policy and programming. In order to improve adolescent health in South Africa, it may be essential to provide combinations of economic, health, and parenting support [36]. Alleviating poverty is necessary but not sufficient: the impacts of poverty on people's mental and physical well-being, particularly as these relate to parenting behaviors, also need to be addressed. Poverty alleviation programs may need to be supplemented in order to address household violence, household illness, and abusive parenting, while parenting-focused programs may need to be designed to additionally combat severe parental psychological stress, promote parenting resilience by building self-efficacy and behavioral skills in positive parenting, and provide financial stress alleviation.

It is encouraging to note a growing evidence base of interventions that may contribute to such combination approaches. Studies from sub-Saharan Africa show increasing success of national unconditional cash transfers as a poverty alleviation tool. Cash transfers have been shown to improve child and adolescent health and access to health care [37] and to reduce transactional and age-disparate sex in particular in combination with psychosocial care [38].

To improve adolescent health outcomes, it is also vital to provide emotional and social support to their caregivers. Whether mental health challenges predate or postdate HIV infection may be of less consequence than the provision of coping interventions to ameliorate the mental health distress and its ongoing ramifications. For families with HIV-positive caregivers, a number of interventions have shown to reduce adolescent and caregiver psychological distress, even over time [39]. Furthermore, testing of parenting interventions containing modules on household illness, parenting stress relief, and financial pressure alleviation is currently under way with promising initial results [40].

This study clearly elaborates the pathways from family disadvantage via abusive parenting and caregiver mental health distress to adolescent health risks. It can be of great value to develop empirically tested theoretical models in order to identify where interventions are needed and indicated. Addressing family disadvantage and supporting caregivers through suitable interventions may enhance adolescent outcomes, even in the face of severe deprivation in Southern Africa.

## Acknowledgments

The research paper was made possible with support from UNICEF Office of Research—Innocenti, with resources made available from the Adolescent Well-being Research Programme, funded primarily by DFID. Additional writing support was provided to C.K. by the National Institute of Mental Health of the National Institutes of Health under award number K01 MH096646, L30 MH098313. The authors thank Jasmina Byrne, Heidi Loening, and Rachel Bray for valuable comments and suggestions and Jennifer Rabedeau for proofreading and editing. The authors thank our fieldwork teams, Sarah Hoeksma, Jenny Doubt, Colleen Kelly, and all participants and their families.

Authors' contributions: L.C. and C.K. had responsibility for the overall study design and management. F.M., L.C., M.O., L.S., I.H., C.K., and A.D.S. had responsibility for conceptualizing and

writing the paper. F.M., M.O., and L.C. conducted the analyses for the paper. All authors reviewed and approved the final version.

## Funding Sources

The research was funded by the UK Economic and Social Research Council and South African National Research Foundation (RES-062-23–2068), HEARD at the University of KwaZulu-Natal (R14304/AA002), the South African National Department of Social Development (27/2011/11 HIV AND AIDS), the Claude Leon Foundation (F08 559/C), the John Fell Fund (103/757), and the Nuffield Foundation (CPF/41513). Support was provided to L.C. and F.M. by the European Research Council (ERC) under the European Union's Seventh Framework Programme (FP7/2007–2013)/ERC grant agreement no 313421, the Philip Leverhulme Trust (PLP-2014-095) and the University of Oxford Impact Acceleration Account (1311-KEA-004).

## Supplementary Data

Supplementary data related to this article can be found at <http://dx.doi.org/10.1016/j.jadohealth.2016.08.016>.

## References

- [1] World Health Organization. Strengthening the health sector response to adolescent health and development. Geneva: World Health Organization; 2009.
- [2] MacMillan HL, Tanaka M, Duku E, et al. Child physical and sexual abuse in a community sample of young adults: Results from the Ontario child health study. *Child Abuse Negl* 2013;37:14–21.
- [3] Viner RM, Ozer EM, Denny S, et al. Adolescence and the social determinants of health. *Lancet (London, England)* 2012;379:1641–52.
- [4] Cluver L, Orkin M, Boyes M, et al. Transactional sex amongst AIDS-orphaned and AIDS-affected adolescents predicted by abuse and extreme poverty. *J Acquir Immune Defic Syndr* 2011;58:336–43.
- [5] International Society for the Prevention of Child Abuse and Neglect. Promoting positive parenting: Preventing violence against children - white paper. Denver: ISPCAN; 2015.
- [6] Republic of South Africa. Children's Act. Cape Town: Republic of South Africa; Vol. 38; 2005.
- [7] Silverman AB, Reinherz HZ, Giaconia RM. The long-term sequelae of child and adolescent abuse: A longitudinal community study. *Child Abuse Negl* 1996;20:709–23.
- [8] Tomlinson M, Cooper P, Murray L. The mother-infant relationship and infant attachment in a South African peri-urban settlement. *Child Dev* 2005; 76:1044–54.
- [9] Avan B, Richter LM, Ramchandani PG, et al. Maternal postnatal depression and children's growth and behaviour during the early years of life: Exploring the interaction between physical and mental health. *Arch Dis Child* 2010;95:690–5.
- [10] Meinck F, Cluver L, Boyes M, et al. Risk and protective factors for physical and sexual abuse of children and adolescents in Africa: A review and implications for practice. *Trauma Violence Abuse* 2015;16:81–107.
- [11] Kathree T, Selohilwe OM, Bhana A, et al. Perceptions of postnatal depression and health care needs in a South African sample: The "mental" in maternal health care. *BMC Womens Health* 2014;14:140.
- [12] Allen AB, Finestone M, Eloff I, et al. The role of parenting in affecting the behavior and adaptive functioning of young children of HIV-infected mothers in South Africa. *AIDS Behav* 2014;18:605–16.
- [13] Meinck F, Cluver L, Boyes M. Household illness, poverty and physical and emotional child abuse victimisation: Findings from South Africa's first prospective cohort study. *BMC Public Health* 2015;15:444.
- [14] Meinck F, Cluver L, Boyes M, et al. Risk and protective factors for physical and emotional abuse victimisation amongst vulnerable children in South Africa. *Child Abuse Rev* 2015;24:182–97.
- [15] Norman RE, Byambaa M, De R, et al. The long-term health consequences of child physical abuse, emotional abuse, and neglect: A systematic review and meta-analysis. *Plos Med* 2012;9:e1001349.
- [16] Byrne B. Structural equation modeling with Amos. 2nd edition. New York: Routledge; 2010.
- [17] Barnes H, Wright G. Defining child poverty in South Africa using the socially perceived necessities approach'. In: Minujin A, Nandy S, eds. *Glob*

- Child Poverty Well-being Meas. Concepts, Policy Action. Bristol: Policy Press; 2012:135–54.
- [18] Kahn K, Tollman S, Garenne M, et al. Validation and application of verbal autopsies in a rural area of South Africa. *Trop Med Int Health* 2000;5: 824–31.
- [19] Radloff L. The CES-D scale: A self-report depression scale for research in the general population. *Appl Psychol Meas* 1977;1:385–401.
- [20] Myer L, Smit J, Roux LL, et al. Common mental disorders among HIV-infected individuals in South Africa: Prevalence, predictors, and validation of brief psychiatric rating scales. *AIDS Patient Care STDS* 2008;22:147–58.
- [21] Beck AT, Epstein N, Brown G, et al. An inventory for measuring clinical anxiety: Psychometric properties. *J Consult Clin Psychol* 1988;56:893–7.
- [22] Edwards D, Steele G. Development and validation of the Xhosa translations of the Beck Inventories: 3. Concurrent and convergent validity. *J Psychol Africa* 2008;18:227–35.
- [23] Snider L, Dawes A. Psychosocial vulnerability and resilience measures for national-level monitoring of orphans and other vulnerable Children: Recommendations for revision of the UNICEF psychological indicator. Cape Town: UNICEF; 2006.
- [24] Kovacs M. Children's Depression Inventory. Niagra Falls, NY: Multi-health Systems; 1992.
- [25] Reynolds CR, Richmond B. What I think and feel: A revised measure of children's anxiety. *J Abnorm Child Psychol* 1978;6:271–80.
- [26] Amaya-Jackson L. Child PTSD checklist. North Carolina: Duke Treatment Service; 1995.
- [27] Lecrubier Y, Sheehan D, Weiller E, et al. The MINI International Neuropsychiatric Interview (MINI). A short diagnostic structured interview: Reliability and validity according to the CID-I. *Eur Psychiatry* 1997;12:224–31.
- [28] Cluver L, Orkin F, Boyes M, et al. Pathways from parental AIDS to child psychological, educational and sexual risk: Developing an empirically-based interactive theoretical model. *Soc Sci Med* 2013;87:185–93.
- [29] Boyes M, Cluver L. Performance of the revised children's manifest anxiety scale in a sample of children and adolescents from poor urban communities in Cape Town. *Eur J Psychol Assess* 2013;29:113–20.
- [30] Boyes M, Cluver L, Gardner F. Psychometric properties of the child PTSD checklist in a South African community sample. *PLoS One* 2012;7:e46905.
- [31] Achenbach T. Child behaviour checklists (CBCL/2-3 and CBCL/4-18), Teacher Report Form (TRF) and Youth Self-Report (YSR). In: Rush J, First M, Blacker D, eds. *Handb. Psychiatr. Meas.* 1st edition. Arlington, VA: The American Psychiatric Association; 2000.
- [32] Sherr L, Cluver L, Betancourt TS, et al. Evidence of impact: Health, psychological and social effects of adult HIV on children. *AIDS* 2014; 28(Suppl 3):S251–9.
- [33] Eamonn M. Structural model of the effects of poverty on externalizing and internalizing behaviours of four to five-year-old children. *Soc Work Res* 2000;24:143–54.
- [34] Brandt R. The mental health of people living with HIV/AIDS in Africa: A systematic review. *Afr J AIDS Res* 2010;8:123–33.
- [35] Steinert J, Cluver L, Melendez-Torres G, et al. Relationships between poverty and AIDS illness in South Africa: An investigation of urban and rural households in KwaZulu-Natal. *Glob Public Health*; 2016. <http://dx.doi.org/10.1080/17441692.2016.1187191>.
- [36] Richter L, Naicker S. A review of published literature on supporting and strengthening child-caregiver relationships (parenting). Arlington, VA: USAID; 2013.
- [37] Luseno WK, Singh K, Handa S, et al. A multilevel analysis of the effect of Malawi's Social Cash Transfer Pilot Scheme on school-age children's health. *Health Policy Plan* 2014;29:421–32.
- [38] Cluver L, Orkin F, Boyes M, et al. Cash plus care: Social protection cumulatively mitigates HIV-risk behaviour among adolescents in South Africa. *AIDS* 2014;28(Suppl 3):S389–97.
- [39] Stein JA, Rotheram-Borus MJ, Lester P. Impact of parentification on long-term outcomes among children of parents with HIV/AIDS. *Fam Process* 2007;46:317–33.
- [40] Cluver L, Lachman J, Ward C, et al. Development of a parenting support program to prevent abuse of adolescents in South Africa: Findings from a pilot pre-post study. *Res Soc Work Pract* 2016, <http://dx.doi.org/10.1177/1049731516628647>.