

**Table 1: Mean and median salivary testosterone (sal-T) by age group and gender in the general population**

	sal-T (pmol/l)				denominator	
	mean	sd	median	(IQR)	unwt	wt
<b>Men</b>						
18-24	314.8	111.6	314.9	(246.3-384.1)	187	244
25-34	266.7	102.5	264.6	(198.6-325.9)	249	335
35-44	232.6	91.5	229	(178.4-285.3)	244	376
45-54	207.5	80.2	203.2	(155.3-248.9)	305	397
55-64	174.4	64.7	175.9	(130.6-214.9)	347	350
65-69	157.6	58.5	152.0	(119.3-190.1)	194	153
<b>Women</b>						
18-24	51.1	45.1	39.2	(21.7-65.6)	247	268
25-34	42.6	32	37.1	(24.3-49.6)	441	403
35-44	41.1	31.7	32.4	(21-50.7)	425	414
45-54	33.9	28.5	26.6	(17.9-40.5)	451	430
55-64	27.6	18.6	22.9	(15.3-35.8)	462	368
65-74	27.5	20.2	23.2	(14.8-33.2)	427	284

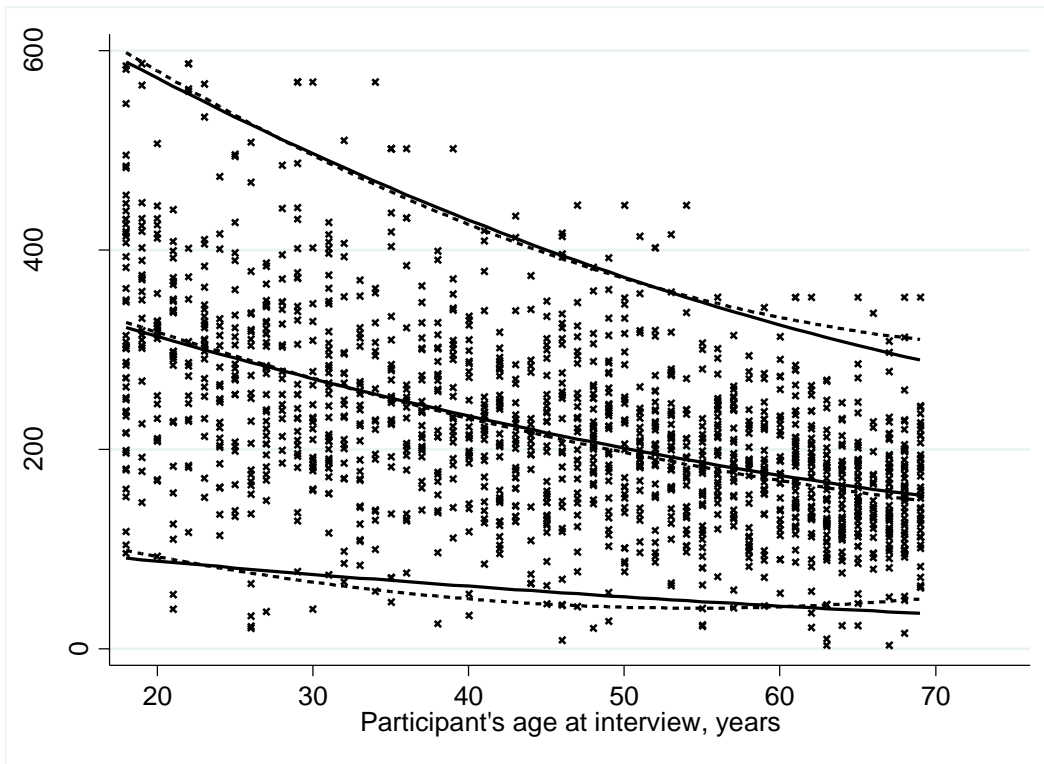
IQR=Interquartile range (25-75th percentiles)

**Figure 1: Distribution of salivary testosterone in men (A) and women (B) in the general population**

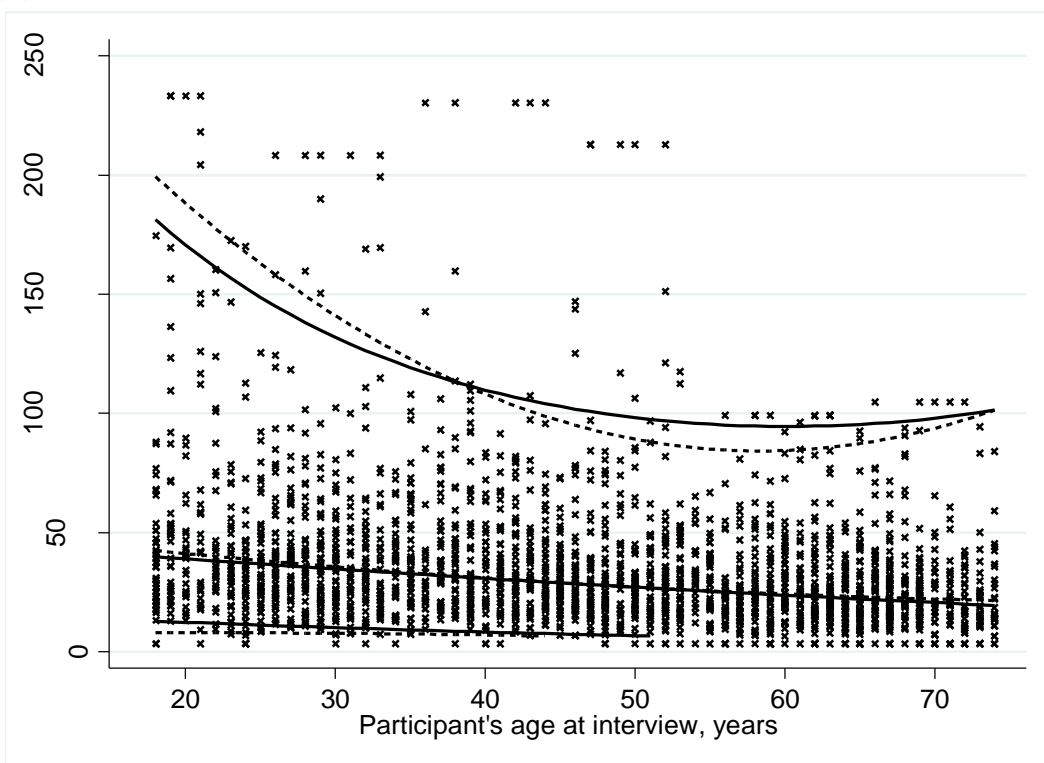
Curves created using linear regression (solid line) for the fitted mean (men) or geometric mean (women), 2.5th and 97.5th percentiles, and quantile regression (dashed line) for the median, 2.5th percentile and 97.5th percentile.

Observed values (x) of 1526 men and 2543 women are displayed

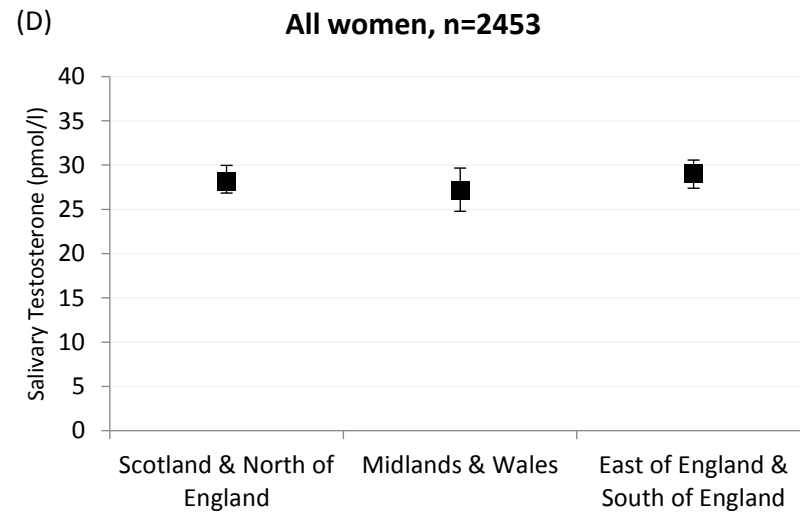
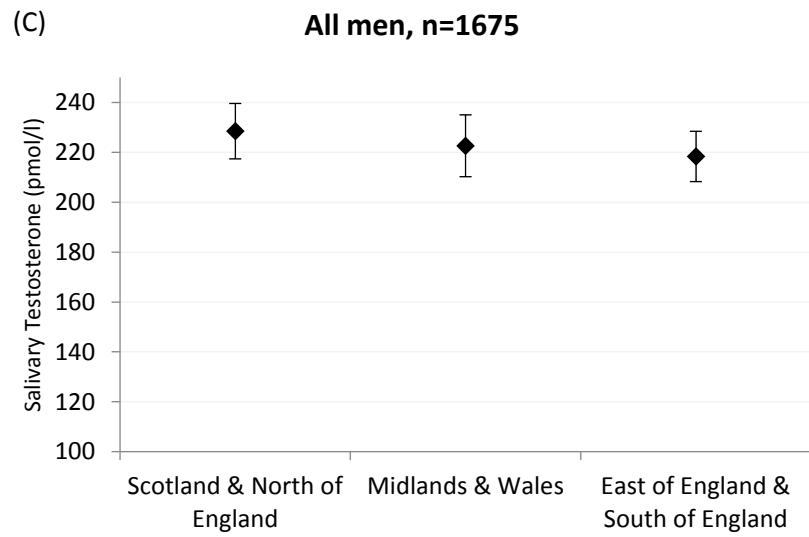
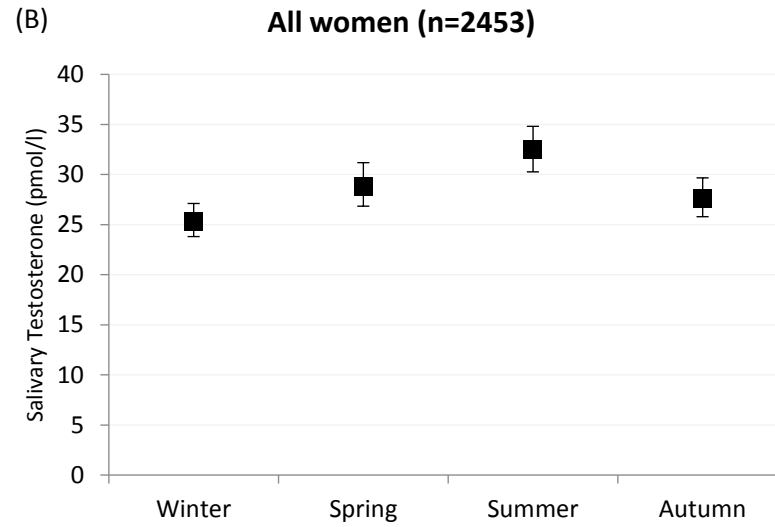
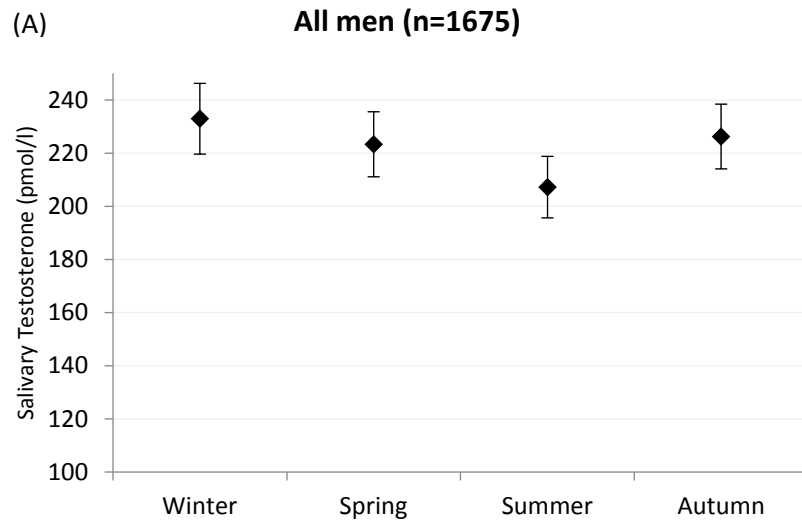
**(A) Men**



**(B) Women**



**Figure 2: Mean (men) or geometric mean (women) salivary testosterone (pmol/l) by season (A for men and B for women) and by region (C for men and D for women) in the general population**



**Appendix table 1: Mean and median salivary testosterone (sal-T) by age group and gender in the general population with exclusions\***

	sal-T (pmol/l)				denominator	
	mean	sd	median	(IQR)	unwt	wt
<b>Men</b>						
18-24	310.5	108.3	308.1	(246.3-372.4)	150	195
25-34	273.9	102.1	270.9	(246.3-372.4)	195	270
35-44	237.8	82.3	231	(195.1-286.5)	174	269
45-54	218.8	77.6	215.7	(172.8-262.6)	215	278
55-64	181.8	63.7	181.8	(140.1-222.5)	232	231
65-69	162.6	53.9	155.7	(130.6-190.1)	108	83
All aged 18-69	237.5	96.9	228.2	(173.8-293.8)	1074	1326
<b>Women</b>						
18-24	61.8	40.8	50.6	(36.1-87.2)	44	56
25-34	45.9	31.2	38.8	(27.2-58.7)	177	179
35-44	40.4	32	31.8	(20.6-49.3)	223	226
45-54	35.5	28.9	29.0	(19.0-40.7)	294	274
55-64	27.6	17.6	23.3	(16.5-35.4)	292	236
65-74	27.4	19	24.3	(15.1-33.2)	246	163
All aged 18-74	36.6	28.9	29.6	(19.2-44.2)	1276	1134

IQR=Interquartile range (25-75th percentiles)

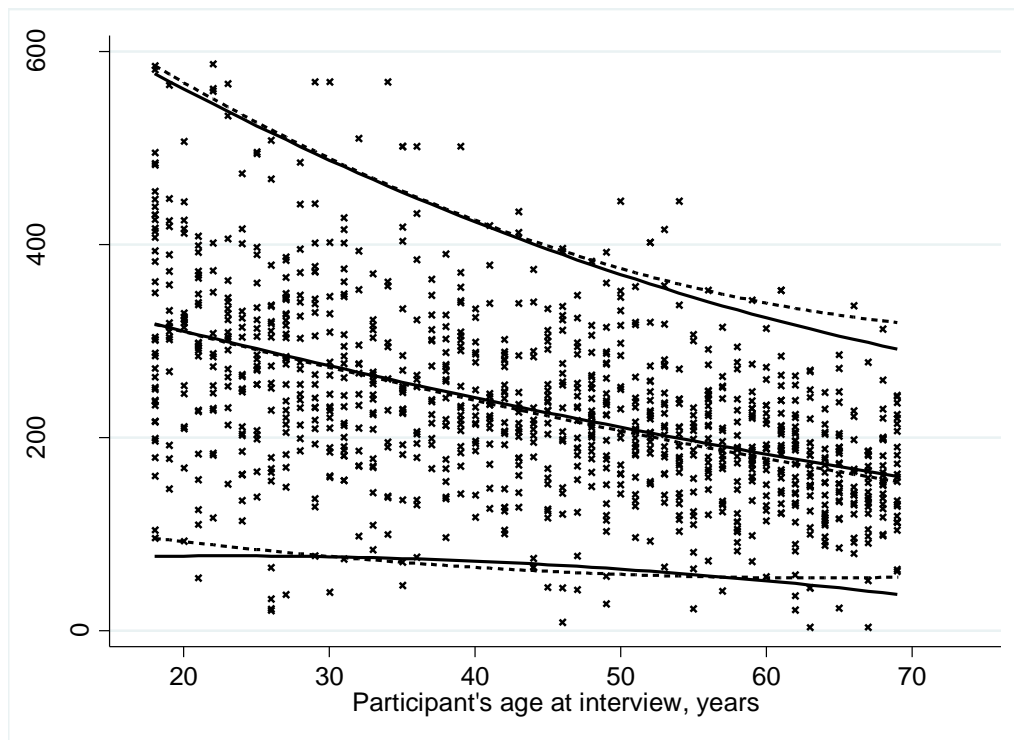
\* Men with a body mass index (BMI) <18.5 or >30 kg/m<sup>2</sup> and women with a BMI <18.5 or >40 kg/m<sup>2</sup>; prostate cancer, prostate enlargement, prostate surgery; polycystic ovaries; treatment for cancer, thyroid, testicular/ovarian or pituitary conditions in the past year; medication for epilepsy; women reporting both hysterectomy and HRT use; HRT; and hormonal contraception. All self-reported. See 'study population' section of methods for further details of exclusion criteria.

Appendix figure 1: Distribution of salivary testosterone in men (A) and women (B) in the general population with exclusions\*

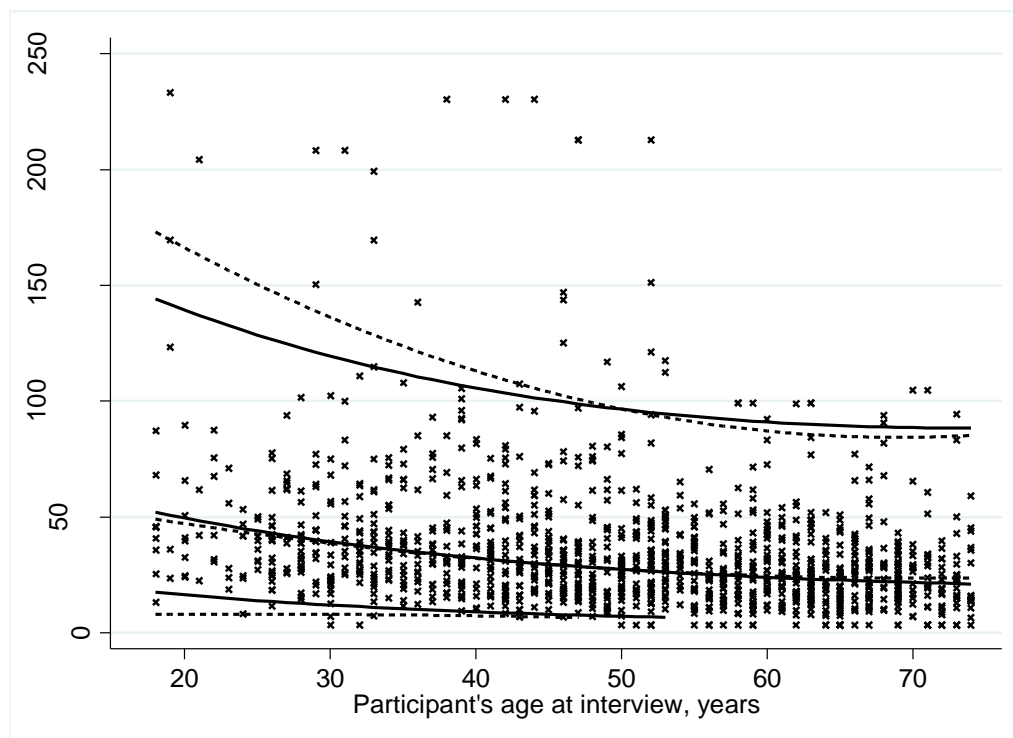
Curves created using linear regression (solid line) for the fitted mean (men) or geometric mean (women), 2.5th and 97.5th percentiles, and quantile regression (dashed line) for the median, 2.5th percentile and 97.5th percentile. Observed values (x) of 1074 men and 1276 women are displayed

\* Men with a body mass index (BMI) <18.5 or >30 kg/m<sup>2</sup> and women with a BMI <18.5 or >40 kg/m<sup>2</sup>; prostate cancer, prostate enlargement, prostate surgery; polycystic ovaries; treatment for cancer, thyroid, testicular/ovarian or pituitary conditions in the past year; medication for epilepsy; women reporting both hysterectomy and HRT use; HRT; and hormonal contraception. All self-reported. See 'study population' section of methods for further details of exclusion criteria.

**(A) Men**



**(B) Women**



**Appendix table 2: Salivary testosterone 2.5th and 97.5th percentiles for men and women at selected years of age (linear regression)**

Selected Age (years)	General population with exclusions		General population	
	2.5 <sup>th</sup> percentile	97.5 <sup>th</sup> percentile	2.5 <sup>th</sup> percentile	97.5 <sup>th</sup> percentile
<b><u>Men</u></b>				
18	82	567	91	589
20	81	554	88	573
25	78	522	81	534
30	75	491	75	497
35	71	460	69	462
40	68	430	63	430
45	66	401	57	400
50	63	372	52	373
55	60	344	47	348
60	57	317	43	325
65	54	291	39	305
69	52	270	36	290
<b><u>Women</u></b>				
18	18	144	13	181
20	16	139	12	171
25	14	129	11	149
30	12	119	10	132
35	10	112	9	119
40	9	106	8	110
45	8	101	7	103
50	7	97	7	101
55	*	93	*	98
60	*	91	*	98
65	*	90	*	96
70	*	89	*	95
74	*	89	*	96

\*<6.5pmol/l