

openheart Novel cardiac pacemaker-based human model of periodic breathing to develop real-time, pre-emptive technology for carbon dioxide stabilisation

Resham Baruah,¹ Alberto Giannoni,² Keith Willson,¹ Charlotte H Manisty,^{1,3} Yoseph Mebrate,^{1,4} Andreas Kyriacou,^{1,4} Hemang Yadav,^{1,5} Beth Unsworth,¹ Richard Sutton,¹ Jamil Mayet,¹ Alun D Hughes,^{1,6} Darrel P Francis¹

To cite: Baruah R, Giannoni A, Willson K, *et al*. Novel cardiac pacemaker-based human model of periodic breathing to develop real-time, pre-emptive technology for carbon dioxide stabilisation. *Open Heart* 2014;1:e000055. doi:10.1136/openhrt-2014-000055

Received 16 February 2014
Revised 23 May 2014
Accepted 15 July 2014



CrossMark

¹International Centre for Circulatory Health, Imperial College Healthcare NHS Trust and Imperial College, London, UK

²Fondazione Gabriele Monasterio and Scuola Superiore Sant'Anna, Pisa, Italy

³The Heart Hospital, University College London, UK

⁴Royal Brompton and Harefield NHS Foundation Trust, London, UK

⁵Mayo Clinic, Rochester, Minnesota USA

⁶Cardiovascular Physiology and Pharmacology, University College London, UK

Correspondence to

Dr R Baruah;
reshambaruah@gmail.com

ABSTRACT

Background: Constant flow and concentration CO₂ has previously been efficacious in attenuating ventilatory oscillations in periodic breathing (PB) where oscillations in CO₂ drive ventilatory oscillations. However, it has the undesirable effect of increasing end-tidal CO₂, and ventilation. We tested, in a model of PB, a dynamic CO₂ therapy that aims to attenuate pacemaker-induced ventilatory oscillations while minimising CO₂ dose.

Methods: First, pacemakers were manipulated in 12 pacemaker recipients, 6 with heart failure (ejection fraction (EF)=23.7±7.3%) and 6 without heart failure, to experimentally induce PB. Second, we applied a real-time algorithm of pre-emptive dynamic exogenous CO₂ administration, and tested different timings.

Results: We found that cardiac output alternation using pacemakers successfully induced PB. Dynamic CO₂ therapy, when delivered coincident with hyperventilation, attenuated 57% of the experimentally induced oscillations in end-tidal CO₂: SD/mean 0.06±0.01 untreated versus 0.04±0.01 with treatment (p<0.0001) and 0.02±0.01 in baseline non-modified breathing. This translated to a 56% reduction in induced ventilatory oscillations: SD/mean 0.19±0.09 untreated versus 0.14±0.06 with treatment (p=0.001) and 0.10±0.03 at baseline. Of note, end-tidal CO₂ did not significantly rise when dynamic CO₂ was applied to the model (4.84±0.47 vs 4.91±0.45 kPa, p=0.08). Furthermore, mean ventilation was also not significantly increased by dynamic CO₂ compared with untreated (7.8±1.2 vs 8.4±1.2 L/min, p=0.17).

Conclusions: Cardiac pacemaker manipulation can be used to induce PB experimentally. In this induced PB, delivering CO₂ coincident with hyperventilation, ventilatory oscillations can be substantially attenuated without a significant increase in end-tidal CO₂ or ventilation. Dynamic CO₂ administration might be developed into a clinical treatment for PB.

Trial Registration number: ISRCTN29344450.

KEY MESSAGES

What is already known about this subject?

► Current treatments for central sleep apnoea, which may affect up to 50% of heart failure patients, have been marred by poor compliance possibly due to the fact that they oblige the use of tight fitting masks.

What does this study add?

► This study trials small doses of carefully-timed carbon dioxide which is delivered for short durations within each ventilatory cycle in a novel pacemaker model of periodic breathing.

How might this impact on clinical practice?

► It is hoped that this could be applied therapeutically for central sleep apnoea with a delivery system such as nasal cannulae which would avoid the use of tight-fitting masks.

INTRODUCTION

Periodic breathing (PB) is a waxing–waning ventilatory pattern, typically with a cycle length of 60 s, generated by oscillations in respiratory gases¹ via an enhanced and delayed chemoreflex response.^{2–4} Common in heart failure (HF),^{5,6} PB is associated with sleep disruption, adrenergic overactivation and increased mortality.^{7,8}

Whether the physiological oscillations of PB contribute to the increased mortality is unknown, but it is plausible that by disrupting sleep they contribute to the fatigue that is characteristic of HF even in patients whose cardiac output at rest is not so low that fatigue would be expected.

A variety of techniques such as adaptive servoventilation (ASV) have been reported to improve sleep disordered breathing, left

ventricular ejection fraction, exercise capacity and quality of life.^{9 10} Although long-term data are lacking, large randomised controlled trials are currently being conducted. Continuous positive airways pressure, an earlier and simpler technology, is uncomfortable for many patients. Its only large scale trial was unable to recruit more than two-thirds of the planned sample size and a further one-sixth of randomised patients withdrew from the trial; those remaining in the trial were using the therapy for less than 4 h per night after the first year. The trial did not show any mortality effect.¹¹

Eliminating the requirement for tight fitting masks would permit a greater range of patients to find the therapy acceptable and might permit them to use it for longer during the night without discomfort. The key to eliminating the requirement for a tight-fit might be to not manipulate ventilation directly but rather use the patient's own chemoreflex to allow an intervention to be delivered in the form of CO₂ and be translated into ventilation by the patient's own biology.

Prior attempts to use CO₂ to alleviate PB have employed continuous, constant doses of exogenous CO₂ throughout the PB cycle ('static' CO₂ therapy), sometimes via the addition of dead-space, in order to raise the mean arterial CO₂ level above the apnoeic threshold. While effective in reducing apnoeas, high doses of exogenous CO₂ have the undesirable effects of potentiating the sympathetic nervous system and elevating mean ventilation.¹²⁻¹⁴ This is particularly hazardous in HF where the supply-demand balance is precarious and further increases in metabolic demand may be compromising. Static CO₂ therapy, therefore, has not been implemented in routine clinical practice.

Previous work by our group suggests it may be possible to specifically target troughs in end-tidal CO₂ using low-dose, carefully timed, brief administrations of CO₂. This is analogous in many ways to ASV with therapy aimed at the current ventilatory instability. In dynamic CO₂ administration, the aim is to attenuate or eliminate the troughs in CO₂ that result from an enhanced chemoreflex gain and the hyperventilation phase of PB. In doing so, despite the intrinsic reflex being unchanged by the therapy, we aim to prevent the exaggerated response to what would have been the hypocapnia phase, namely the apnoea or hypopnoea that would then themselves have triggered a disproportionate rise in CO₂. Wrongly timed 'dynamic' therapy, therefore, even with very small doses of CO₂, has the potential to exacerbate ventilatory oscillations. Therefore, a system that allows prediction of the timing and size of troughs in end-tidal CO₂ has been developed.^{15 16}

Repetitive alternation of cardiac output using cardiac permanent pacemakers (PPMs) can engender oscillations in respiratory gases and ventilation, a process which could be used to model PB, thereby facilitating therapeutic algorithm development.^{16 17} The alternation of cardiac output from high to low every 30 s produces oscillations in ventilation with cycle length of 60 s that are not unlike the oscillations of spontaneous PB.¹⁷

Unlike spontaneous PB seen in HF, in this model there is a continuous exogenous driver to oscillation, such that any improvement following intervention may be confidently attributed to the intervention, useful because the severity of spontaneous PB is variable and unpredictable.¹⁸ Moreover, this experimental model, rather than models of voluntarily simulated PB, allows monitoring of the effect on ventilation.¹⁹⁻²² The model is not identical to spontaneous PB, whose cycle time and amplitude are different between different patients and can fluctuate with time, although in our experiment the therapy algorithm does not have prior knowledge of the true cycle time or amplitude and has to deduce this from the ventilatory patterns being observed in real time. This goes some way to simulating the ultimate clinical application environment while retaining the advantages of experimental reproducibility of an underlying PB pattern that is relatively consistent.

In this study, we applied pacemaker manipulation to produce an experimental model of PB by alternating cardiac output. We then aimed to deliver CO₂ using our pre-emptive CO₂ delivery system. This required real-time prediction of when CO₂ was likely to fall, and then exogenous CO₂ to be delivered to fill the troughs in end-tidal CO₂, thereby preventing the resultant hypoventilation. We aimed to stabilise ventilation, while minimising the amount of CO₂ administered and the consequent undesirable increase in mean ventilation.

METHODS

Subjects

Of 21 patients screened, 3 were excluded for demonstrating PB at baseline, 5 because of heart rates >80 bpm at rest and 1 for significant lung disease. Twelve patients with PPM (4 with cardiac resynchronisation devices, 8 with dual or single chamber pacemakers; [table 1](#)) were finally recruited from outpatient cardiac services between 2007 and 2009. All implants were at least 3 months prior to recruitment. Six patients had echocardiographic (ejection fraction <50%), and clinical features of HF and six had normal systolic function.

Exclusion criteria were implantable cardiac defibrillators with antitachycardia therapy set at rates lower than 120 bpm, conditions precluding lying for 90 min, recent decompensation, ventilatory disorders, end-stage renal failure and medication affecting ventilatory drive. Within patients with HF, there was no evidence of daytime PB or exercise oscillatory ventilation but two patients demonstrated cardiac cachexia. The six patients without HF had pacemaker implantation for the following indications: atrioventricular (AV) node ablation, vasovagal syncope, first-degree heart block, sick sinus syndrome, complete heart block and sinus bradycardia.

On the study day, patients were monitored for 30 min while recumbent on a couch, in order to exclude spontaneous PB. All patients gave informed consent for the study, which was approved by local research ethics

Table 1 Baseline characteristics

	Heart failure	Non-heart failure
n	6	6
Age (years)	72.5±9.3	71.0±8.8
Male	5	3
Height (cm)	171.3±8.3	166.8±10.2
Weight (kg)	77.0±10.6	83.4±15.6
Ejection fraction (%)	23.7±7.3	54.3±7.2
Heart rate (bpm)	64±15	55±3
Cardiac output (L/min)	4.5±2.1	7.6±2.8
End-tidal CO ₂ (kPa)	4.6±0.7	5.1±0.2
Mean ventilation (L/min)	8.1±1.8	7.5±1.5
NYHA 2/3/4	2/3/1	
Aetiology		
Ischaemic	4	
Dilatative	1	
Valvular	1	
Alcoholic	0	
Treatment		
Biventricular pacemaker	4	
ACE inhibitor/ARBs	4	
Beta-blockers	3	
Aldosterone antagonists	4	
Diuretics	2	

ARBs, Angiotensin II Receptor Blockers; NYHA, New York Heart Association.

committee (05/Q0404/018). The investigation conformed to the principles outlined in the Declaration of Helsinki.

Measurements

Patients breathed through a calibrated pneumotachograph attached to a Multicap monitor (Datex Instrumentarium, Helsinki, Finland) measuring ventilation and respiratory gases. An electrocardiogram signal was recorded using a Hewlett-Packard 78351A. Beat-by-beat blood pressure and cardiac output were measured non-invasively using a photoplethysmograph device (Finometer, Finapres Medical Systems, The Netherlands).²³

Data acquisition

The data were sampled at 1000 Hz using a custom data acquisition system consisting of an analogue-to-digital card (DAQCard 6062E, National Instruments, Austin, Texas, USA) and a workstation running software written in Labview instrument control language (V7.0, National Instruments). This system allowed data to be collected simultaneously from all the devices and later analysed off-line using software written in Matlab (Natick, Massachusetts, USA).^{16–18} Heart rate, blood pressure, cardiac output, end-tidal gas concentrations and ventilation were digitally interpolated and resampled to obtain signals at 1 Hz for subsequent analysis.^{13 14}

Pacemaker protocol

Pacemaker reprogramming was performed via a pacemaker telemetry head positioned over the implanted pacemaker device. In all patients, the maximum possible safe change in cardiac output was elicited by changing heart rate, AV delay and pacing configuration where possible (eg, from right ventricular pacing to biventricular pacing). On average, the heart rate was changed from 59.5±10.2 to 79.1±10.7 bpm ($p<0.01$). Cardiorespiratory variables were monitored while alternating the cardiac output as a step change, between low cardiac output and high cardiac output, every 30 s for at least five cycles of 60 s (untreated). Cardiac output was altered in exactly the same way for exactly the same duration during the dynamic CO₂ therapy administrations.

CO₂ administration system

Starting from a fixed concentration of CO₂ in a non-pressurised reservoir, we delivered exogenous CO₂ using a specially designed motorised valve, in any desired configuration using custom software (Matlab, Natick, Massachusetts, USA,^{13 14 16–18}). This performed real-time analysis of ventilation and, using Fourier transformation, calculated the magnitude and the phase of ventilatory oscillations within the cycle at 1 s intervals during the experiment.

The motor drove a valve, which enabled the inspired gas mixture composition to be varied continuously to any desired value between atmospheric and the concentration of the CO₂ cylinder. The administration algorithm was programmed to give CO₂ doses dependent on the magnitude and phase of the current oscillation (figure 1).

The CO₂ concentration was varied smoothly: it began from zero concentration, then rose smoothly to the peak of administration and then declined similarly to finish at zero again (figure 2). The peak concentration administered was automatically adjusted in real time to be proportional to the amplitude of the ventilatory oscillations, in order to prevent either over or under treatment¹² (figure 3). The dose required was recalculated every second based on the above principles and was translated into an electrical output to the motor. In the case of no ventilatory oscillations, no CO₂ was delivered (figure 3).

CO₂ administration protocol

During baseline cardiac output alternation (at least five 60 s cycles), no CO₂ was administered. CO₂ was then delivered at a phase that allowed peak alveolar concentration to be coincident with peak ventilation, for at least five 60 s cycles. We aimed to set the timing of delivery at the motor so that the peak concentration of inspired CO₂ would be arriving at the alveolar level at approximately the peak of ventilation. In each subject, the time interval between motor movement and the increment in end-tidal CO₂ during baseline breathing was measured and on average this was 9 s.

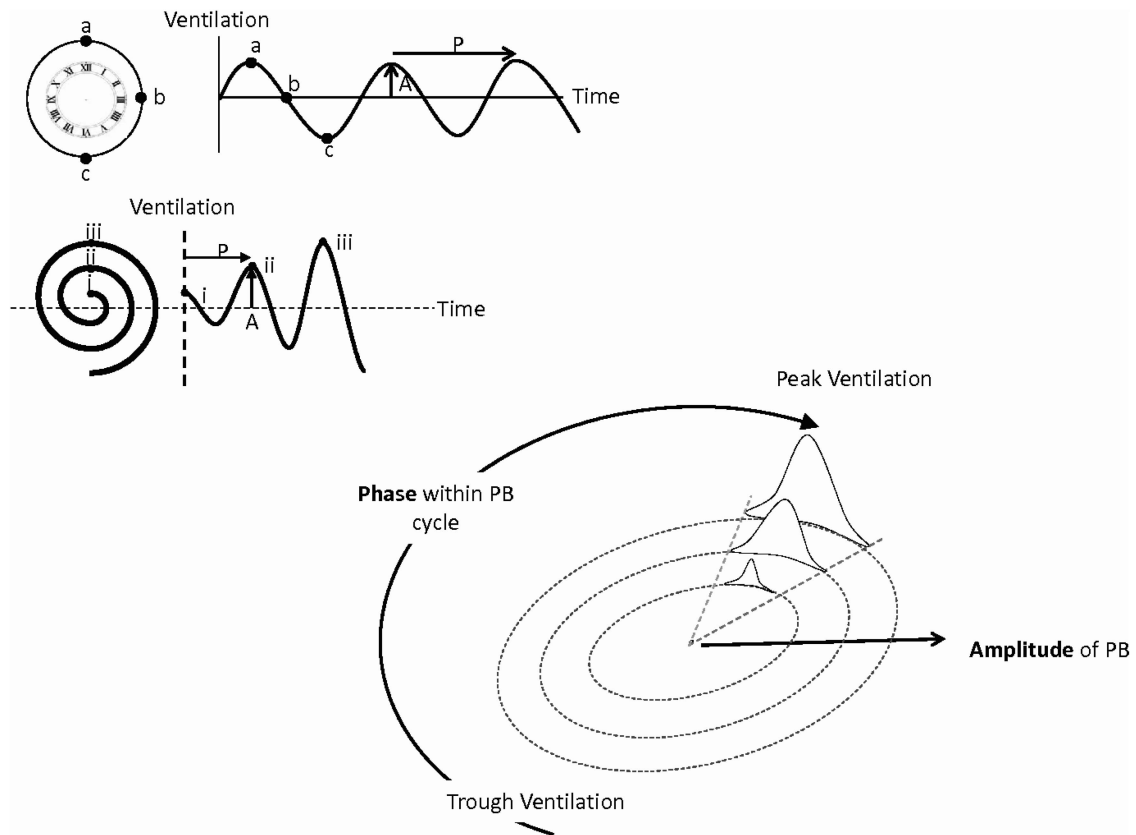
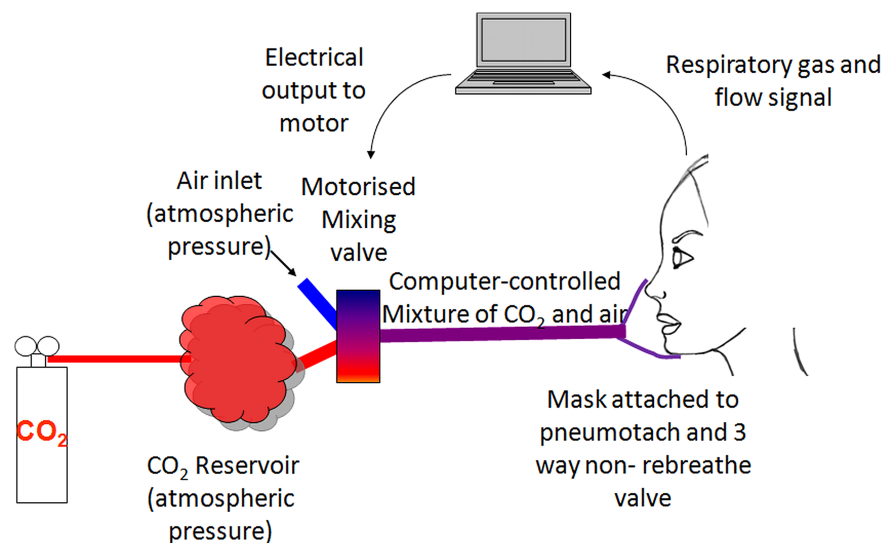


Figure 1 Top left: Each ventilatory cycle may be graphically represented as a clock with peak ventilation (a) at 12 o'clock, mid-ventilation (b) at either 3 o'clock or 9 o'clock (depending on whether ventilation is decreasing or increasing) and trough ventilation at 6 o'clock. Fourier analysis allows the amplitude (A) and cycle length (P) to be established. Low amplitude oscillations (i) are represented as nearer to the centre of the clock than medium (ii) or large (iii) oscillations. At any time, the current position within the PB cycle can, therefore, be appreciated by the position of the cursor. As ventilation stabilises the cursor moves closer towards the centre of the clock face. Bottom right: CO₂ was delivered from 0 to peak concentration gradually and then falling back to 0 with a '1-cos' profile for a fraction of the PB cycle. Here dynamic CO₂ is being delivered coincident with peak ventilation. Both the duration and peak dose of CO₂ delivered are proportional to the size of the oscillations so the smaller oscillations receive a lower peak CO₂ concentration for a shorter period of time (smallest sinusoidal administration) and the largest ventilatory oscillations receive both a longer administration and a higher peak CO₂ concentration (largest sinusoidal profile).

In between interventions there was a 'washout period' where cardiac output continued to be alternated but no CO₂ delivered. In a separate run, in order to assess the effect

of phase on ventilation, CO₂ was delivered so that the CO₂ would arrive coincident at the alveolar level with trough ventilation, in antiphase to the initial therapeutic algorithm.

Figure 2 Schematic of laboratory set-up. CO₂ and air are allowed to mix to any desired concentration using a computer-controlled motorised valve. This mixture is drawn in by the patient on inspiration and expired via a three-way valve. Inspired and expired CO₂ concentrations and respiratory flow were measured and fed back to an online computer program to establish the position within the ventilatory cycle and to display this and the end-tidal CO₂.



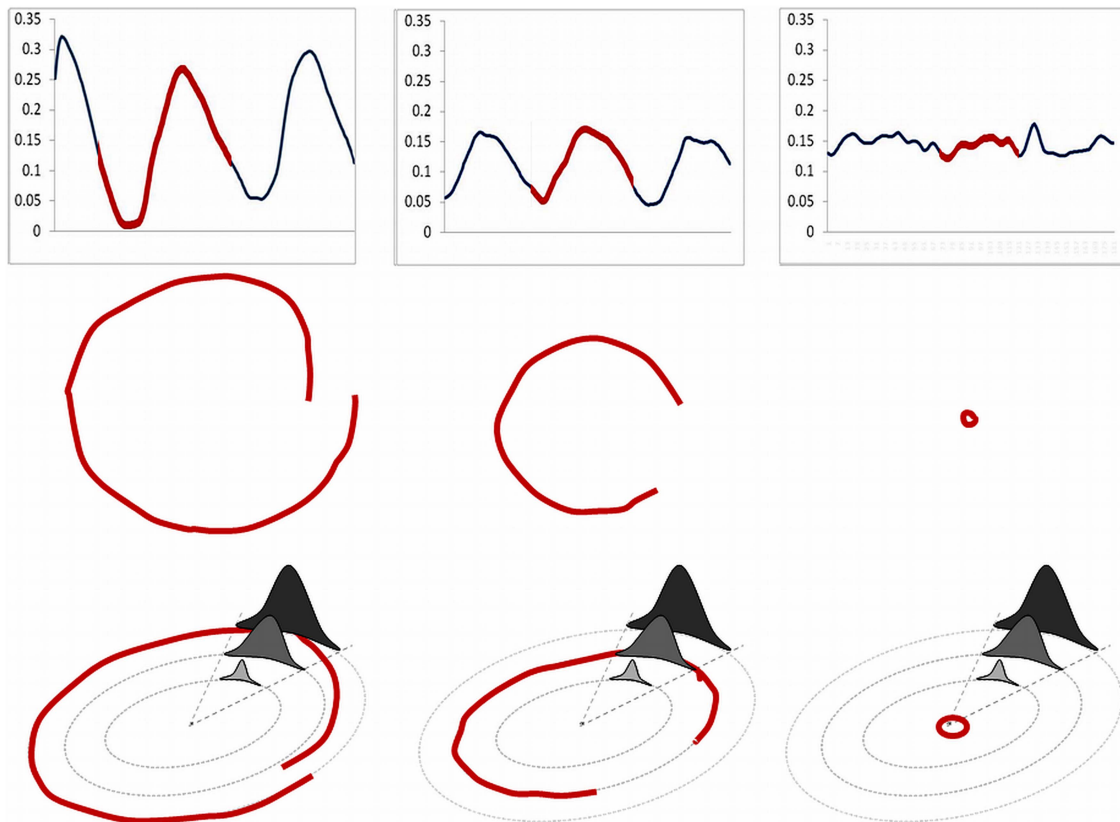


Figure 3 Upper left panel is the ventilation trace of a patient with spontaneous periodic breathing who has large ventilatory oscillations. Part of the trace (in red) has been translated to the middle left plot to demonstrate what would be seen in the lab in real time, where it progresses in a clockwise direction. This portion of the cycle starts in mid-cycle (at 3 o'clock). Ventilation then falls to its trough at 6 o'clock and then rises again to peak ventilation. As this second oscillation in the group of three is of lower amplitude than the preceding peak (blue in the top left panel) this part of the trace ends at mid-cycle closer to the centre of the circle than where it started. The bottom left hand panel shows how the treatment algorithm at peak dose would be applied. The patient would receive a high peak dose and a long duration of therapy (dark grey). The middle panel depicts moderate oscillations, from a different patient with spontaneous PB, with the red portion starting just before trough ventilation and continuing until just after the peak of ventilation (middle plot). This patient would receive the middle grey treatment algorithm (bottom, middle plot). The right hand panel is that of stable breathing in which no therapy would be given by the algorithm. In this case the cursor on screen would trace a path close to the centre.

Data analysis

The degree of oscillation of the measured respiratory variables (a marker of the severity of the simulated PB) was measured using the coefficient of variation (SD/mean). This has the advantage of being dimensionless.

Statistical analysis

Continuous values are expressed as the mean \pm SD. Paired t tests were performed to compare the effect of baseline alternations with the subsequent administration strategies within individuals. A value of $p < 0.05$ was considered statistically significant.

RESULTS

Cardiac pacemaker modulation as a model of periodic breathing

Heart rate was alternated on average by 59.5 ± 10.2 to 79.1 ± 10.7 bpm. AV delay was alternated in all the

patients with HF and four of the patients without HF by a mean of 108 ± 55 ms. Three of the four patients with biventricular pacemakers were also simultaneously alternated between biventricular pacing and right ventricular pacing. The resting cardiac output measured on the Finapres device was 6.9 ± 3.6 L/min. During alternations between the two cardiac output states, the lower cardiac output state averaged 6.6 ± 3.6 l/min and upper averaged 7.3 ± 4.1 l/min. The amplitude of fluctuation (defined as half the difference between upper and lower) was 2.46 ± 2.24 L/min representing a change in cardiac output of 3.6–30% from baseline.

Following the pacemaker-induced cardiac output increase, the sequence of events was first an elevation in cardiac output, followed by a rise in end-tidal CO_2 and then by a rise in ventilation (figure 4).

Alternation of cardiac output significantly increased the degree of oscillation in end-tidal CO_2 by 182% compared to baseline (SD/mean end-tidal CO_2 from 0.02 ± 0.01 to 0.06 ± 0.01 , $p < 0.0001$). This translated to a 90% increase in

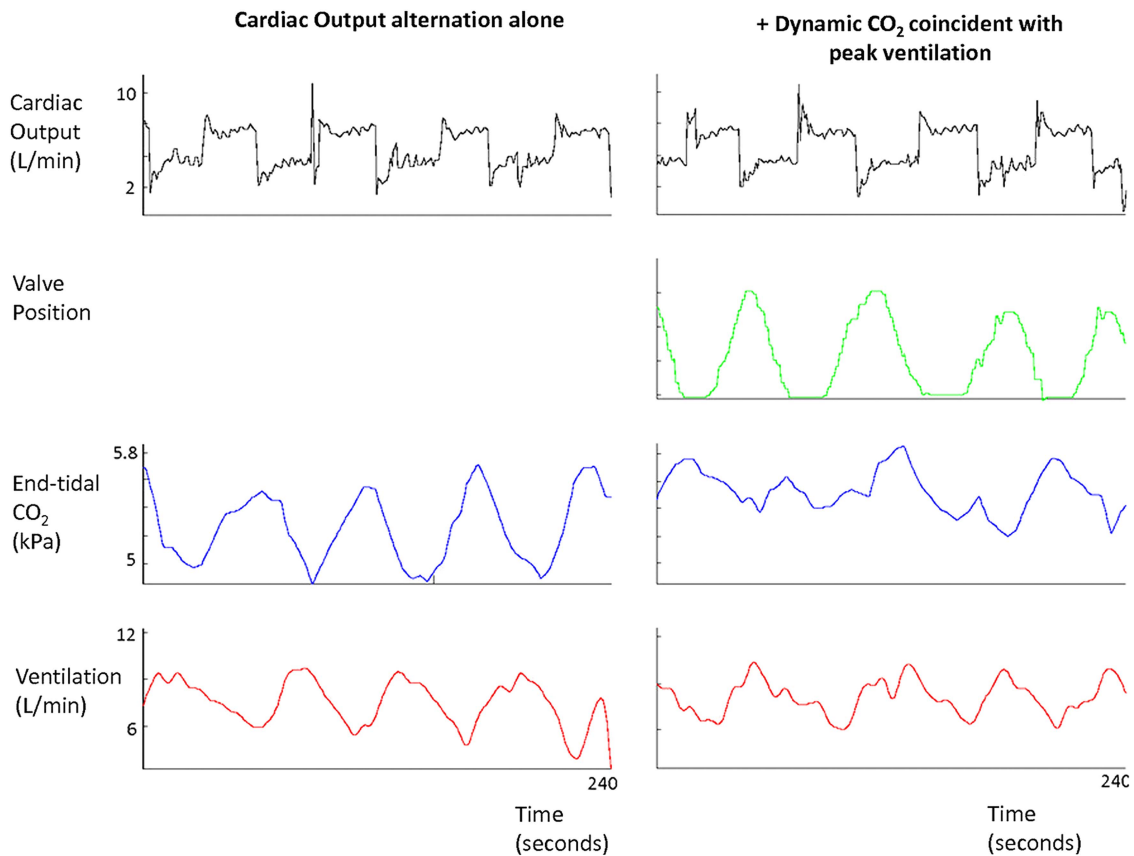


Figure 4 Left: Alternations in cardiac output (black) in one typical patient, every 60 s for three cycles, are followed by oscillations in end-tidal CO₂ (blue) and ventilation (red), when no dynamic CO₂ is applied. Right: Oscillations in end-tidal CO₂ (blue) and ventilation (red), in the same patient, are attenuated when dynamic CO₂ is delivered where the troughs in end-tidal CO₂ are predicted (around peak ventilation). The motor valve position profile (green), which is proportional to the dose of CO₂ delivered, varies in size and shape dependent on the amplitude and phase of the current ventilatory signal in real time. While ventilation is still oscillatory, the amplitude of the oscillations are diminished.

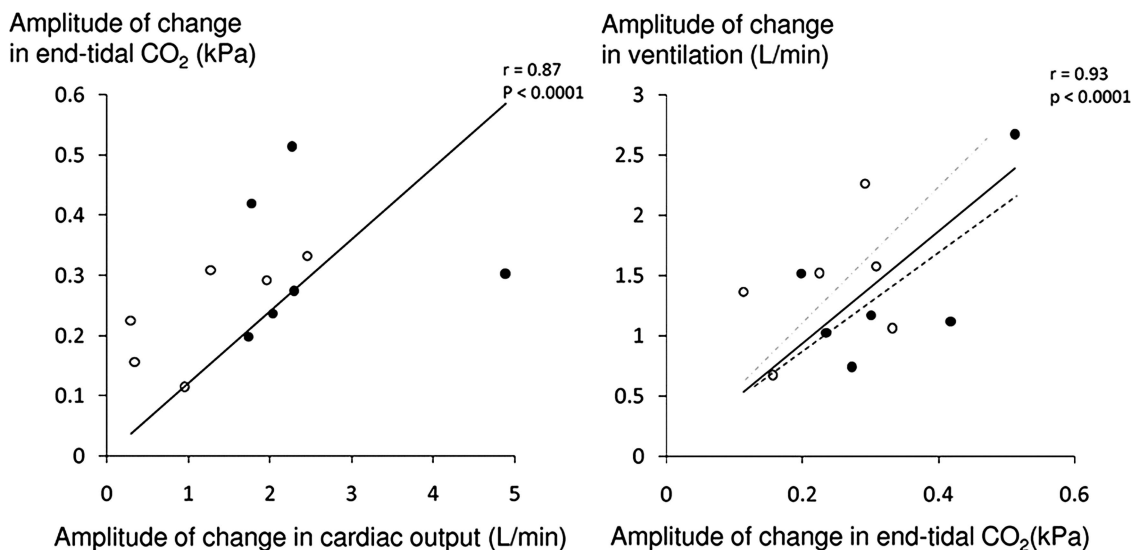


Figure 5 The amplitude of oscillation of end-tidal CO₂ correlates to the amplitude of oscillation of cardiac output for both patients with heart failure (no fill) and subjects with normal systolic function (solid black fill). The amplitude of ventilatory oscillation is closely correlated to the amplitude of oscillation of end-tidal CO₂ with the regression line for heart failure patients in grey interrupted and for non-heart failure patients in black interrupted. Typically, for any given change in end-tidal CO₂ there was a greater change in ventilation in the heart failure patients than the non-heart failure patients.

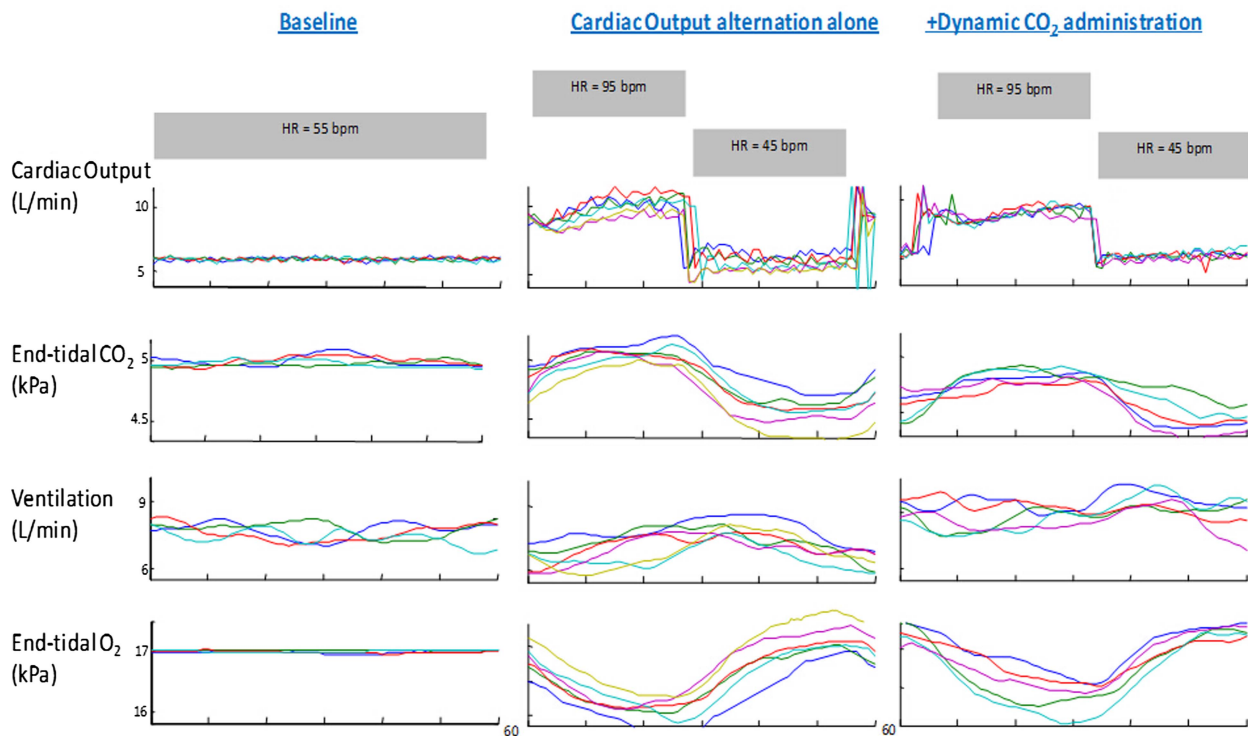


Figure 6 Raw data from one individual where each 60 s cycle has been time aligned. The far left hand panel is 240 s of baseline ventilation where no intervention has taken place. The middle panel is the data from cardiac output oscillations alone every thirty seconds resulting in oscillations in the respiratory gases and ventilation. The right hand panel shows five time-aligned cycles where dynamic CO₂ therapy was applied coincident with peak ventilation while 60 s cardiac output alternation continued and the resultant amplitude of end-tidal CO₂ and ventilatory oscillations were attenuated.

the degree of ventilatory oscillation (SD/mean from 0.10 ± 0.03 to 0.19 ± 0.09 , $p=0.002$; figure 5). The resultant oscillations in end-tidal CO₂ and ventilation were highly sinusoidal (fit-to-sine wave had $r^2=0.95$, $p<0.001$ and $r^2=0.88$, $p<0.001$ respectively, figures 4 and 6).

The amplitude of cardiac output change generated in patients without HF was greater than that generated by those with HF (3.68 ± 2.58 L/min vs 1.23 ± 0.86 L/min, $p=0.05$) and as a result the change in the end-tidal CO₂ oscillations induced by the PPM was higher in the patients without HF (Δ SD/mean = 0.04 ± 0.01 vs 0.03 ± 0.01 , $p=0.02$). However, there was no difference in the degree of ventilatory oscillation induced in patients with and without HF (Δ SD/Mean = 0.08 ± 0.05 vs 0.10 ± 0.10 , $p=0.73$). This may be explained by the trend towards the ratio between the rise in ventilation and that in end-tidal CO₂ (a form of chemoreflex gain assessment), being higher in the patients with HF than without (608.4 ± 233.5 vs 385.9 ± 118.7 L/min/kPa, $p=0.06$, figure 5). Similarly, there was a non-significant trend towards the time taken between the peak in end-tidal CO₂ and the peak ventilation (a measure of chemoreflex delay), being longer for patients with HF than in without (22.4 ± 3.1 vs 16.9 ± 6.6 s, $p=0.09$).

Dynamic CO₂ delivery coincident with peak ventilation

In order for the supplemental inspired CO₂ to arrive at the alveolar level coincident with the peak of ventilation,

the motor had to begin its movement substantially in advance of the peak of ventilation. The algorithm did not require sensing of any particular level of ventilation but rather was able to project into the future the curve of oscillation of ventilation. What was programmed into the algorithm was the time within the PB cycle at which the valve should have the greatest aperture. The average delay between CO₂ being delivered and the inspired CO₂ rising was 8.8 ± 2.5 s. With dynamic CO₂ administration that was timed to be coincident with peak ventilation, the size of the variation in end-tidal CO₂ fell from the untreated level of 0.06 ± 0.01 to 0.04 ± 0.01 , $p=0.001$, which is 57% of the way to the value in baseline non-modulated breathing of 0.02 ± 0.01 . Dynamic CO₂ achieved a 56% reduction in the variability of ventilation from the experimentally induced oscillations from 0.19 ± 0.09 to 0.14 ± 0.06 , $p=0.001$, where baseline breathing alone had oscillations of 0.10 ± 0.03 (figures 4, 6 and 7).

There was a trend towards increased mean end-tidal CO₂ following application of the dynamic CO₂ (4.91 ± 0.45 vs 4.84 ± 0.47 kPa, $p=0.08$) and mean ventilation compared to the pacemaker-induced PB (8.4 ± 1.2 vs 7.8 ± 1.2 L/min, $p=0.17$; figures 4, 7 and 8).

Dynamic CO₂ delivery to coincide with trough ventilation

In contrast, delivering dynamic CO₂ therapy just before trough ventilation (ie, at the opposite phase to that which is predicted to be helpful) failed to attenuate

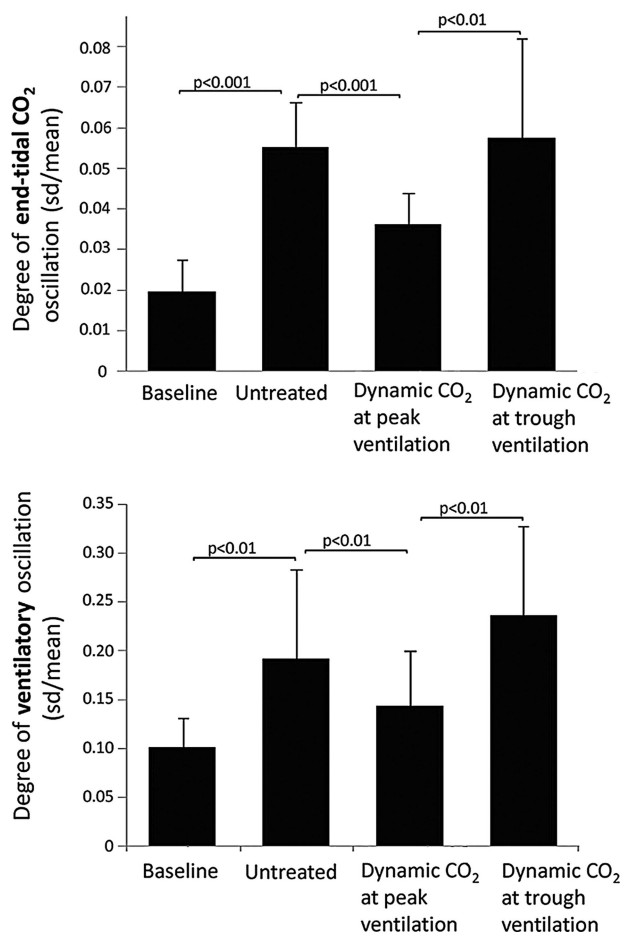


Figure 7 By alternating cardiac output via pacemakers labelled 'Untreated', there was a 182% increase in end-tidal CO₂ oscillations compared to stable breathing without intervention labelled 'Baseline'. When dynamic CO₂ was applied to the experimentally induced oscillations coincident with peak ventilation, this abolished 57% of the induced oscillations. When dynamic CO₂ was applied 180° after peak ventilation there was no significant difference to pacemaker-induced oscillations alone. Degree of ventilatory oscillation during stable breathing 'Baseline', with alternation of cardiac output using pacemakers 'Untreated', when dynamic CO₂ is applied at peak ventilation and following application of dynamic CO₂ coincident with trough ventilation.

both the degree of oscillation of end-tidal CO₂ (0.06 ± 0.02 at antiphase vs 0.06 ± 0.01 , untreated, $p=0.75$) or ventilation (0.024 ± 0.09 at antiphase vs 0.19 ± 0.09 untreated, $p=0.17$, [figure 7](#), [table 2](#)).

DISCUSSION

This study demonstrates that it is possible to produce a human model of PB using cardiac pacemaker manipulation both in patients with preserved systolic function and in patients with HF ([figures 4](#), [5](#) and [6](#)). The enhanced chemoreflex gain that is seen in patients with HF increases the ability of manipulations of cardiac output to affect ventilation. We were able to apply this model of PB to develop a potential therapeutic approach; to

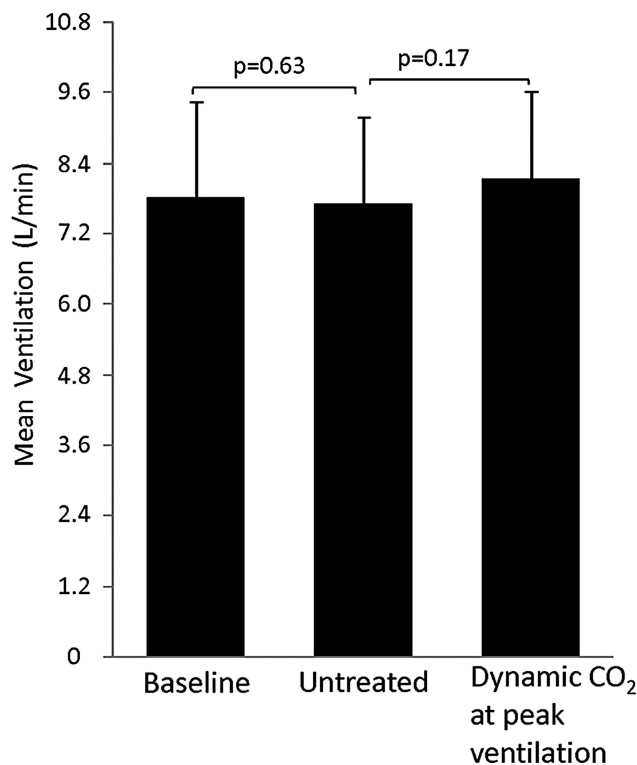


Figure 8 Dynamic CO₂ administration, which successfully attenuated 57% of the induced oscillations in end-tidal CO₂, was not associated overall with a significant increase in mean ventilation compared with untreated experimentally induced pacemaker oscillations alone.

deliver small, graded amounts of CO₂ carefully timed within the PB cycle.¹² This improved stability and minimised the increment in end-tidal levels of CO₂ and mean ventilation whose adverse effects might have prevented a simpler static CO₂ regime from being adopted as a therapy.

A dynamic solution for a dynamic problem?

Ventilation is tightly controlled by negative feedback whereby a rise in arterial CO₂ elicits the reflex physiological response of increased ventilation which tends to reduce arterial CO₂. In conditions such as PB where this chemoreflex is exaggerated and delayed,²⁴ this reflex response actually generates oscillations in end-tidal CO₂ and ventilation.²⁵

Previously, low arterial CO₂ concentrations seen in PB and HF have been targeted using static CO₂ (either by continuous supplementary CO₂ or by adding dead-space). While often successful in stabilising ventilation, this is at the clinically prohibitive cost of increased mean ventilation.¹²

In the present study, we tested a dynamic administration algorithm. Rather than delivering CO₂ statically, this gave small finely adjusted concentrations of CO₂ for small parts of the PB cycle aiming to specifically fill in the troughs of CO₂ produced by hyperventilation rather than to raise the overall CO₂ level.¹²

Table 2 Results of dynamic CO₂ administration on end-tidal CO₂ and ventilation

	Mean (kPa)	SD/mean	Mean (L/min)	SD/mean
Baseline	4.83±0.58	0.02±0.01	7.8±1.8	0.10±0.03
Untreated	4.84±0.47	0.06±0.01	7.8±1.2	0.19±0.09
p vs baseline	0.90	<0.001	0.6	<0.01
Predicted optimum	4.90±0.45	0.04±0.01	8.4±1.2	0.14±0.06
p vs baseline	0.40	<0.001	0.5	<0.01
p vs untreated	0.1	<0.001	0.2	<0.01
Antiphase to predicted optimum	4.85±0.43	0.06±0.02	7.2±1.8	0.24±0.09
p vs baseline	0.5	0.001	0.2	<0.001
p vs untreated	0.2	0.8	0.30	0.2
p vs optimal	0.2	0	0.1	<0.01

Degree of oscillation and mean end-tidal CO₂ and ventilation when the patients were quietly observed at rest 'Baseline', cardiac output was alternated using a pacemaker to induce oscillations 'Untreated', dynamic CO₂ was applied to the induced oscillations coincident with peak ventilation 'Predicted Optimal', and dynamic CO₂ was applied to the induced oscillations coincident with trough ventilation 'Antiphase to predicted optimum'.

Why do we need a pacemaker model of periodic breathing?

In clinical practice, PB and central sleep apnoea typically appear and disappear unpredictably during a recording,^{15 26 27} presenting a problem while developing interventions where numerous aspects of the algorithm could, in principle, be adjusted. For example, in dynamic therapy, the timing of CO₂ delivery is likely to be important, and a large number of variants of timing are possible.¹² If each conceivable variant of timing had to undergo a whole night of testing in numerous patients, it would take an impractically long time to make progress. Likewise, the maximal concentration of CO₂ and the profile of administration within the PB cycle are further aspects of the therapeutic algorithm that require investigation. If a grid of combinations of even these three aspects were to be tested, it would be even more impractical.

The purpose of our experimentally inducible PB is to allow ventilatory oscillations to be generated at will in patients, with a predictable and consistent pattern.^{13 14}

Pre-emptive predictive CO₂ delivery: from theory to practice

The findings of this study are consistent with other findings by our group that dynamic CO₂ therapy may stabilise ventilatory oscillations, but only if the timing and dose used are correct.^{12 16} These studies identified that if dynamic CO₂ was correctly timed to be coincident with peak ventilation, it had the potential to significantly attenuate the oscillations, but if CO₂ delivery was incorrectly timed (arriving during the hypoventilation phase), it could even make breathing more unstable.^{12 16}

Potential clinical impact

Static CO₂ is not clinically utilised due to the undesirable consequences of large doses of CO₂.²⁸ Dynamic CO₂ therapy achieved significant amelioration of the induced PB but without increasing mean ventilation (figure 8). This is consistent with the work by our group,

which suggests that dynamic CO₂ administration can stabilise oscillatory ventilation without the cost of a statistically significant increase in mean ventilation. It is likely that there was in fact a small increment in this study, as some supplemental inspired CO₂ was given. If we had used higher concentrations, the effect on CO₂ and ventilation would have been proportionately larger. However, it is unlikely that administered over a short part of the PB cycle and in varying concentrations, it would amount to delivering the same amount of CO₂ as is delivered with static CO₂ therapy. The effect of static CO₂ therapy on ventilation is not often explicitly stated but can be calculated from the equation below:

$$\Delta V = \frac{V_{CO_2}}{\Delta(F_{et}CO_2 - F_iCO_2)}$$

where ΔV is the change in alveolar ventilation, V_{CO_2} a constant volume of body production of CO₂, $\Delta(F_{et}CO_2 - F_iCO_2)$ is the change in difference of end-tidal CO₂ to inspired CO₂.

This equation can also be used to calculate the rise in mean ventilation that occurred in the previous published clinical studies using both static CO₂ delivery and the addition of even very small amounts of dead space, which increased ventilation ranges from 24% to 96%.¹² This degree of increase in ventilation imposes large increments in the patients' metabolic requirements, which may be particularly precariously balanced in HF, in addition to the CO₂-induced potentiation of the sympathetic nervous system and sleep disruption.²⁴ However, the increment with dynamic CO₂ is likely much smaller than this, by virtue of the fact that the overall dose of CO₂ administered is so very much smaller. It is not known whether the efficacy of dynamic CO₂ on attenuating ventilatory oscillations would be greater in spontaneous PB than it is in driven PB. In spontaneous PB each cycle of PB is the driver for the next. If the therapy attenuates one cycle, then this action may have an

indirect effect of attenuating the second cycle, separate from the direct therapeutic effect on the second cycle.

Another advantage of a dynamic therapeutic approach to a physiological problem such as PB is that it would be automatically titrated to severity such that if breathing stabilises, therapy ceases.

This study also incidentally raises the possibility that cardiac output modulation by a pacemaker could be used therapeutically to counteract oscillation rather than to induce it.

Study limitations

This study only verifies that a PB pattern can be elicited at will and that this experimentally induced PB can be used to develop and refine dynamic CO₂ algorithms. This is a proof-of-concept study and does not aim to assess the effect of this algorithm on spontaneous PB and, as a non-apnoeic model of PB, may not mimic true apnoeic PB. In this study, the experimental PB was not completely eliminated but it was attenuated by about one half. This may be because of the limitations of dynamic CO₂ delivery in attenuating ventilatory oscillations, or it may be because the driver to physiological oscillations (changes in cardiac output) was unremitting. If such a technology were developed and applied to spontaneous PB, the degree of efficacy might be more or less than this, which can only be found from future randomised prospective trials. In addition, it is possible that even the level of decrease seen here may be sufficient to break the vicious circle that gives rise to PB.

This study was designed to detect mean effects across the entire group and, therefore, any comparisons between patients with and without HF are likely to be underpowered. One example is that there was only a trend towards longer chemoreflex delays in patients with HF compared with without HF, whereas previous studies have consistently reported this difference to be statistically significant.⁴

A facemask and pneumotach were used to unambiguously quantify the concentration of CO₂ being inspired and the end-tidal CO₂. Although such masks are poorly tolerated in normal clinical practice,²⁹ and they necessitate an element of dead space, dynamic CO₂ administration need not be dependent on tightly fitting masks.

This particular study did not address whether static CO₂ therapy would have been efficacious in reducing the experimentally induced oscillations, and at what cost to mean ventilation, in this novel model of PB. Future studies might benefit from incorporation from a static CO₂ arm that is either matched to the dynamic CO₂ arm, either in terms of the average amount of CO₂ delivered over the cycle, or in terms of efficacy on ventilatory stability. The latter option might be complex because it would require the dynamic therapy to always be done first and then a variety of static CO₂ concentrations to be tested in order for the equivalent one to be identified.

CONCLUSION

We describe a method of inducing PB at will in subjects with pacemakers that permits evaluation of the impact of proposed therapies on ventilatory patterns in a controlled manner. Further, we developed a real-time pre-emptive CO₂ stabilisation system that relies only on ventilatory monitoring.^{12 16} Such a system allowed successful prediction of where end-tidal CO₂ was likely to fall, and by delivering controlled doses of inhaled CO₂ at this time, it was possible to substantially attenuate both oscillations in end-tidal CO₂ oscillations and ventilation. Critically, ventilatory oscillations were attenuated without increasing either mean end-tidal CO₂ or mean ventilation, making pre-emptive dynamic CO₂ therapy a potentially attractive therapeutic intervention in conditions such as PB in HF.

Contributors The study was conceived of and planned by RB, KW, CM, YB, RS, JM, ADH and DPF. RB, AG, KW, YM, AK, HY and BU performed the study. RB, AG, AK, HY, JM, ADH and DPF analysed the data. All authors contributed to the writing of the manuscript and have approved the final version. All authors agree that they are accountable for all aspects of the work in ensuring that questions related to the accuracy or integrity of any part of the work are appropriately investigated and resolved. DPF is the guarantor.

Funding RB (PG/07/065), DPF (FS/04/079), AK (FS/08/027/24763) and BU (PG/07/066) were supported by the British Heart Foundation. AG was supported by a European Society Cardiology research grant. KW received support from the Foundation for Circulatory Health (ICCH/05/5004), and CM was supported by a Wellcome Trust Fellowship (077049/Z/05/Z). The authors are grateful for support from the NIHR Biomedical Research Centre funding scheme.

Competing interests None.

Patient consent Obtained.

Ethics approval Royal Brompton and Harefield NHS Trust ethics committee.

Provenance and peer review Not commissioned; externally peer reviewed.

Data sharing statement No additional data are available.

Open Access This is an Open Access article distributed in accordance with the terms of the Creative Commons Attribution (CC BY 3.0) license, which permits others to distribute, remix, adapt and build upon this work, for commercial use, provided the original work is properly cited. See: <http://creativecommons.org/licenses/by/3.0/>

REFERENCES

1. Ponikowski P, Anker SD, Chua TP, *et al*. Oscillatory breathing patterns during wakefulness in patients with chronic heart failure: clinical implications and role of augmented peripheral chemosensitivity. *Circulation* 1999;100:2418–24.
2. Solin P, Roebuck T, Johns DP, *et al*. Peripheral and central ventilatory responses in central sleep apnea with and without congestive heart failure. *Am J Respir Crit Med* 2000;162:2194–200.
3. Javaheri S. A mechanism of central sleep apnea in patients with heart failure. *N Engl J Med* 1999;341:949–54.
4. Francis DP, Willson K, Davies LC, *et al*. Quantitative general theory for periodic breathing in chronic heart failure and its clinical implications. *Circulation* 2000;102:2214–21.
5. Javaheri S, Parker TJ, Liming JD, *et al*. Sleep apnea in 81 ambulatory male patients with stable heart failure: types and their prevalences, consequences, and presentations. *Circulation* 1998;97:2154–9.
6. Mortara A, Sleight P, Pinna GD, *et al*. Abnormal awake respiratory patterns are common in chronic heart failure and may prevent evaluation of autonomic tone by measures of heart rate variability. *Circulation* 1997;96:246–52.

7. Lanfranchi PA, Braghiroli A, Bosimini E, *et al*. Prognostic value of nocturnal Cheyne-Stokes respiration in chronic heart failure. *Circulation* 1999;99:1435–40.
8. Hastings PC, Vazir A, O'Driscoll DM, *et al*. Symptom burden of sleep-disordered breathing in mild-to-moderate congestive heart failure patients. *Eur Respir J* 2006;27:748–55.
9. Pepperell JC, Maskell NA, Jones DR, *et al*. A randomized controlled trial of adaptive ventilation for Cheyne-Stokes breathing in heart failure. *Am J Respir Crit Care Med* 2003;168:1109–14.
10. Oldenburg O, Bitter T, Lehmann R, *et al*. Adaptive servoventilation improves cardiac function and respiratory stability. *Clin Res Cardiol* 2011;100:107–15.
11. Arzt M, Floras JS, Logan AG, *et al*. Suppression of central sleep apnea by continuous positive airway pressure and transplant-free survival in heart failure: a post hoc analysis of the Canadian Continuous Positive Airway Pressure for Patients with Central Sleep Apnea and Heart Failure Trial (CANPAP). *Circulation* 2007;115:3173–80.
12. Steens RD, Millar TW, Su X, *et al*. Effect of inhaled 3% CO₂ on Cheyne-Stokes respiration in congestive heart failure. *Sleep* 1994;17:61–8.
13. Lorenzi-Filho G, Rankin F, Bies I, *et al*. Effects of inhaled carbon dioxide and oxygen on cheyne-stokes respiration in patients with heart failure. *Am J Respir Crit Care Med* 1999;159:1490–8.
14. Andreas S, Weidel K, Hagenah G, *et al*. Treatment of Cheyne-Stokes respiration with nasal oxygen and carbon dioxide. *Eur Respir J* 1998;12:414–19.
15. Mebrate Y, Willson K, Manisty CH, *et al*. Dynamic CO₂ therapy in periodic breathing—a modelling study to determine optimal timing and dosage regimes. *J Appl Physiol* 2009;107:696–706.
16. Manisty CH, Willson K, Davies JE, *et al*. Induction of oscillatory ventilation pattern using dynamic modulation of heart rate through a pacemaker. *Am J Physiol Regul Integr Comp Physiol* 2008;295:R219–27.
17. Baruah R, Manisty CH, Giannoni A, *et al*. Novel use of cardiac pacemakers in heart failure to dynamically manipulate the respiratory system through algorithmic changes in cardiac output. *Circ Heart Fail* 2009;2:166–74.
18. Caples SM, Wolk R, Somers VK. Influence of cardiac function and failure on sleep-disordered breathing: evidence for a causative role. *J Appl Physiol* 2005;99:2433–9.
19. Giannoni A, Baruah R, Willson K, *et al*. Real-time dynamic carbon dioxide administration: a novel treatment strategy for stabilization of periodic breathing with potential application to central sleep apnea. *J Am Coll Cardiol* 2010;56:1832–7.
20. Francis DP, Davies LC, Piepoli M, *et al*. Origin of oscillatory kinetics of respiratory gas exchange in chronic heart failure. *Circulation* 1999;100:1065–70.
21. Schmidt HB, Rauchhaus M, Francis DP, *et al*. Assessment of chemoreflex sensitivity in free breathing young subjects by correction for respiratory influence. *Int J Cardiol* 2001;78:157–65.
22. Davies LC, Colhoun H, Coats AJ, *et al*. A non-invasive measure of baroreflex sensitivity without blood pressure measurement. *Am Heart J* 2002;143:441–7.
23. Penzel T, Mayer J, Peter JH, *et al*. Continuous non-invasive blood pressure monitoring in patients with sleep disorders. *Physiol Res* 1992;41:11–7.
24. Pryor WW. Cheyne-Stokes respiration in patients with cardiac enlargement and prolonged circulation time. *Circulation* 1951;4:233–8.
25. Crowell JW, Guyton AC, Moore JW. Basic oscillating mechanism of Cheyne-Stokes breathing. *Am J Physiol* 1956;187:395–8.
26. Tobin MJ, Snyder JV. Cheyne-Stokes respiration revisited: controversies and implications. *Crit Care Med* 1984;12:882–7.
27. Onal E, Burrows DL, Hart RH, *et al*. Induction of periodic breathing during sleep causes upper airway obstruction in humans. *J Appl Physiol* 1986;61:1438–43.
28. Szollosi I, Jones M, Morrell MJ, *et al*. Effect of CO₂ inhalation on central sleep apnea and arousals from sleep. *Respiration* 2004;71:493–8.
29. Bradley TD, Takasaki Y, Orr D, *et al*. Sleep apnea in patients with left ventricular dysfunction: beneficial effects of nasal CPAP. *Prog Clin Biol Res* 1990;345:363–8. discussion 368–70.

Novel cardiac pacemaker-based human model of periodic breathing to develop real-time, pre-emptive technology for carbon dioxide stabilisation

Resham Baruah, Alberto Giannoni, Keith Willson, Charlotte H Manisty, Yoseph Mebrate, Andreas Kyriacou, Hemang Yadav, Beth Unsworth, Richard Sutton, Jamil Mayet, Alun D Hughes and Darrel P Francis

Open Heart 2014 1:
doi: 10.1136/openhrt-2014-000055

Updated information and services can be found at:
<http://openheart.bmj.com/content/1/1/e000055>

These include:

References

This article cites 29 articles, 15 of which you can access for free at:
<http://openheart.bmj.com/content/1/1/e000055#BIBL>

Open Access

This is an Open Access article distributed in accordance with the terms of the Creative Commons Attribution (CC BY 3.0) license, which permits others to distribute, remix, adapt and build upon this work, for commercial use, provided the original work is properly cited. See: <http://creativecommons.org/licenses/by/3.0/>

Email alerting service

Receive free email alerts when new articles cite this article. Sign up in the box at the top right corner of the online article.

Notes

To request permissions go to:
<http://group.bmj.com/group/rights-licensing/permissions>

To order reprints go to:
<http://journals.bmj.com/cgi/reprintform>

To subscribe to BMJ go to:
<http://group.bmj.com/subscribe/>