

Supporting information:

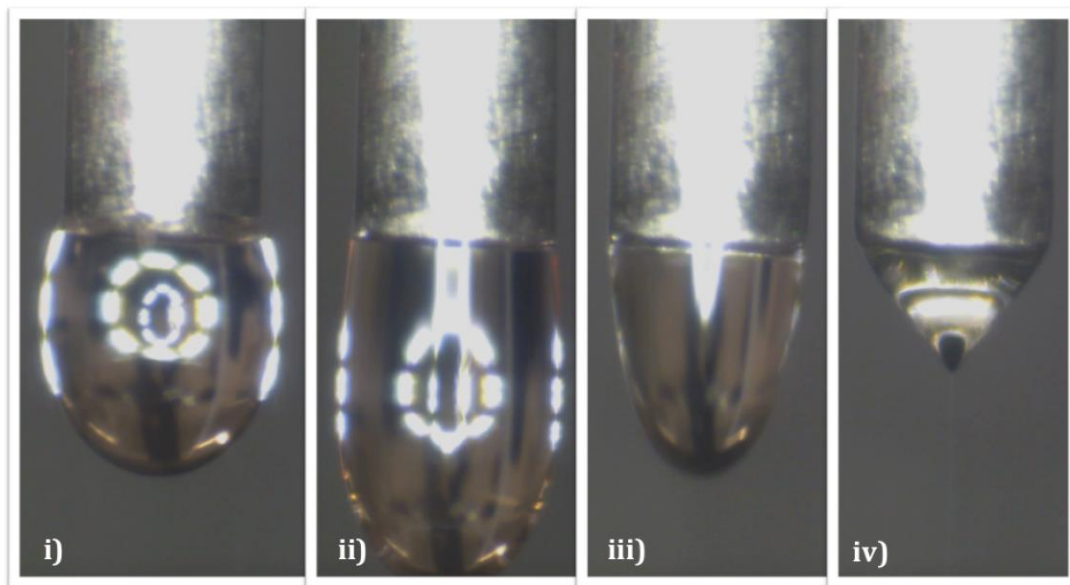


Figure A1. Transition of liquid meniscus to cone jet by applying the electric field at i) 0 kV, ii) 8 kV, iii) 12 kV and iv) 16 kV to 10 wt% cisplatin solution delivered to the needle at a constant flow rate of 5 $\mu\text{l}/\text{min}$.

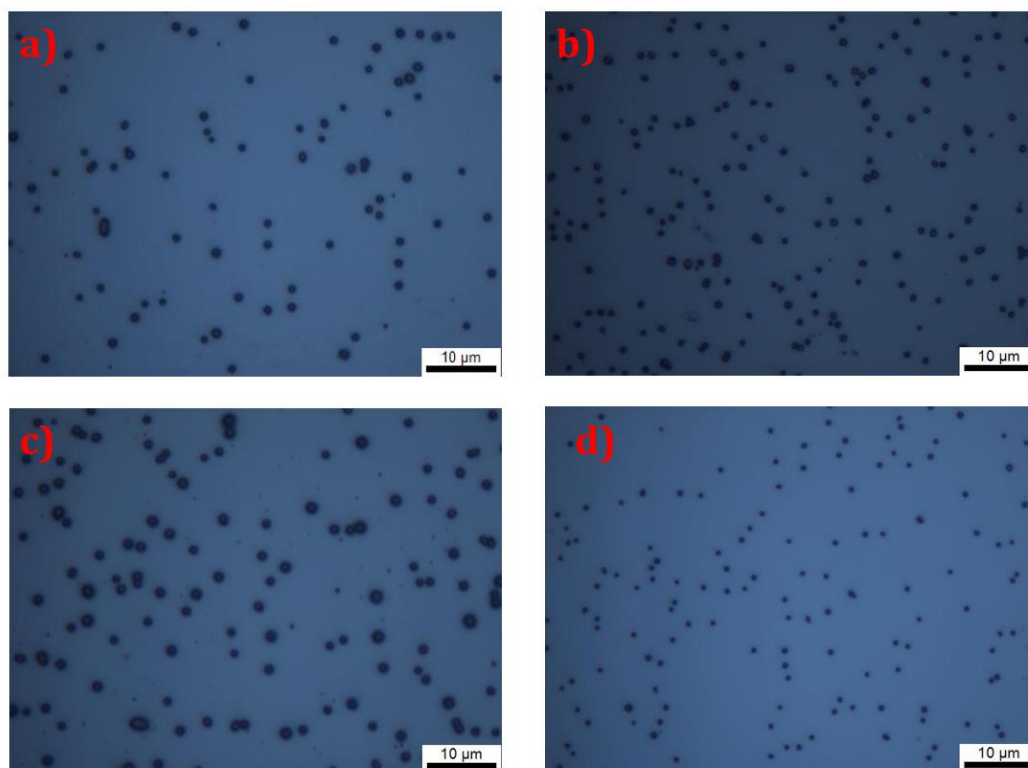


Figure A2. Optical micrographs of particles a) without Cisplatin, b) 2.5 wt% c) 5 wt% and 10 wt% Cisplatin with respect to PLGA.

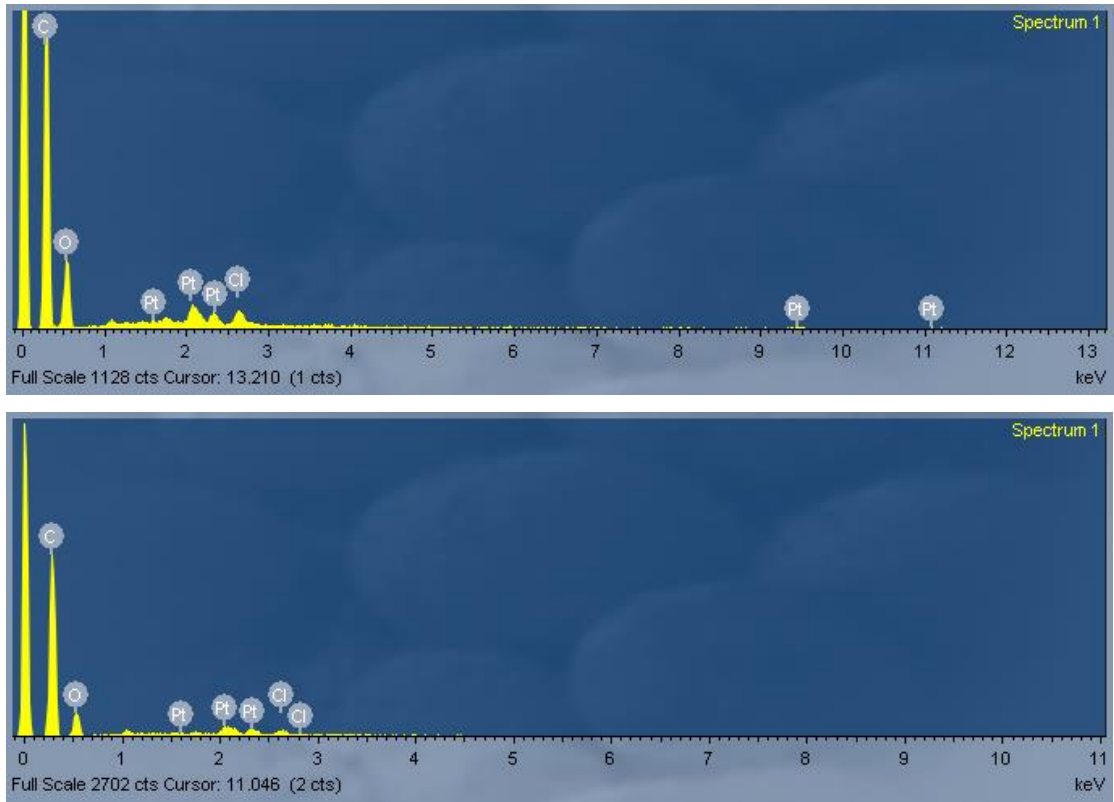


Figure A3. EDX spectrum of 10 wt% (above) and 5 wt% (below) of PLGA loaded cisplatin.