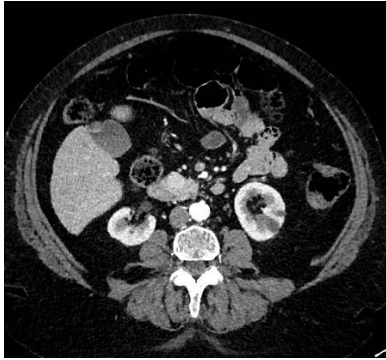


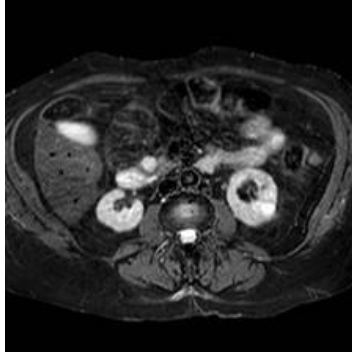
## Figures

**Figure 1:** Pre-treatment Imaging: 18mm round lesion within the head of the pancreas

**A:** CT – arterial enhancement of PNET



**B:** MRI



**C:** EUS – Hypochoic circular lesion



**Figure 2:**

- EUS image of a 19G FNA needle at the edge of the insulinoma and the Habib EUS-RFA probe advanced across the length of the lesion
- Fluoroscopic image of the Habib EUS-RFA probe within the insulinoma

