



Understanding lives –
now and for the future

Pregnancy Component: Participant Information Leaflets

EDITOR

Carol Dezateux

Acknowledgements

The Life Study Pregnancy Component participant materials were developed by the Life Study scientific leadership team and approved by the City and East London Research Ethics Committee: REC reference12/LO/1492.

This work was supported by the Economic and Social Research Council [Grant numbers ES/J007501/1, ES/L002507/1, ES/L002353/1, ES/L012871/1, ES/N007549/1].

ISSN 2398-1652. DOI: 10.14324/000.wp.1485700

URL: <http://discovery.ucl.ac.uk/1485700/>



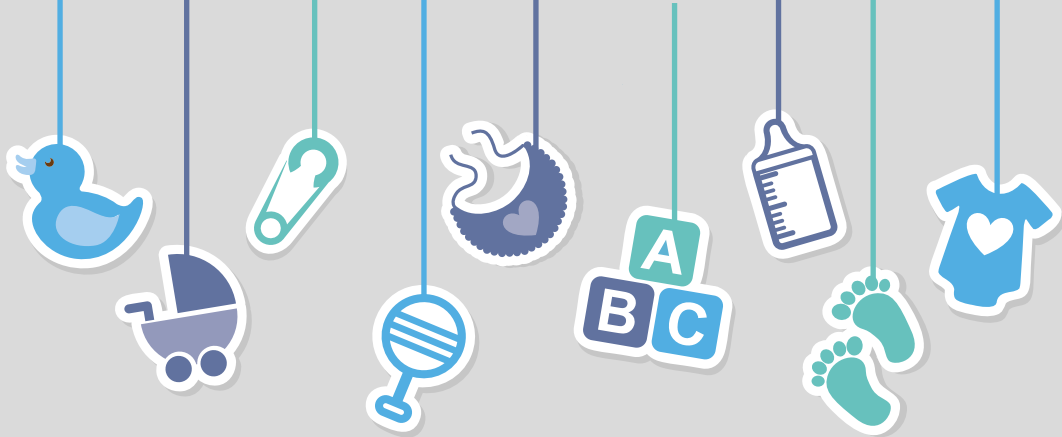
Life Study Working Papers are licensed under a [Creative Commons Attribution-NonCommercial-NoDerivatives 4.0 International License](https://creativecommons.org/licenses/by-nc-nd/4.0/)



CONGRATULATIONS
on your new baby



CONGRATULATIONS
on your new baby



CONGRATULATIONS
on your new baby