

High rate of lymphoma among a UK cohort of adolescents with vertically-acquired HIV-1 infection transitioning to adult care in the era of antiretroviral therapy

C P Eades, MSc MRCP<sup>1</sup>, S Herbert, MSc MRCP<sup>1</sup>, S G Edwards, MBChB FRCP<sup>1</sup>, L J Waters MD MRCP<sup>1</sup>, T Peake, RN<sup>1</sup>, R F Miller MBBS FRCP<sup>1,2</sup>, E Jungmann MSc FRCP<sup>1</sup>

<sup>1</sup>Department of Sexual Health, Mortimer Market Centre, Central & North West London NHS Foundation Trust, London, UK

<sup>2</sup>Centre for Sexual Health and HIV Research, Research Department of Infection and Population Health, University College London, UK

Short title: Lymphoma in adolescents with vertically-acquired HIV-1 infection

Key words: lymphoma, HIV, vertically-acquired, adolescent, antiretroviral therapy

Correspondence to: Dr Chris Eades, Department of Sexual Health, Mortimer Market Centre, Mortimer Market (off Capper Street), London WC1E 6JB, UK. Tel: +44 20 3317 5249; e-mail: [christopher.eades@nhs.net](mailto:christopher.eades@nhs.net)

Acknowledgements: CPE analysed and interpreted the data, and wrote the first and final drafts of the manuscript; SH interpreted the data, provided clinical care and critically reviewed the manuscript for important intellectual content; SGE was responsible for the study concept, interpreted the data and critically

reviewed the manuscript for important intellectual content; LJW interpreted the data, provided clinical care and critically reviewed the manuscript for important intellectual content; TP interpreted the data, provided clinical care and critically reviewed the manuscript for important intellectual content; RFM interpreted the data, and wrote the first and final drafts of the manuscript; EJ interpreted the data, provided clinical care and critically reviewed the manuscript for important intellectual content. All authors confirm they have seen and approved the final version of the manuscript. All authors declare no funding or conflicts of interest to disclose.

These data were originally presented, in part, as a poster presentation (abstract number P126) at the Third Joint Conference of the British HIV Association (BHIVA) and the British Association of Sexual Health and HIV (BASHH); Liverpool, United Kingdom; 1-4 April 2014.

## **LETTER**

HIV-1-infected (HIV+) children and adolescents are at significant risk of non-Hodgkin lymphoma (NHL), most typically diffuse large B-cell (DLBC), high-grade plasmablastic, or Burkitt variants [1, 2]. The risk of developing lymphoma in HIV-infected individuals appears directly related to nadir CD4 count [3-5] and to ongoing HIV viraemia. Consistent virological suppression with antiretroviral therapy (ART) is, by contrast, highly protective [5, 6]. During the pre- and early-ART era, profound immunosuppression and detectable viraemia were common occurrences in HIV+ children, and antiretroviral options were limited by significant toxicities, unpalatable formulations and poor virological durability [7,

8]. Early ART regimens were frequently unlicensed, therefore underpinned by low-quality clinical evidence, in paediatric populations. As a result, inadvertent under-dosing was observed in up to 62% of children in the United Kingdom (UK) and Ireland between 1997 and 2005 [9]. Virological failure and subsequent accumulation of resistance-associated mutations are therefore common in this population at the point of transition to adult services [10]. Thus, despite the advantages of modern ART regimens and multi-disciplinary care in resource-rich countries, many adolescents with vertically-acquired HIV will bear the burden of chronic, sub-optimal virological control in childhood alongside the significant challenges of maintaining consistent treatment concordance (and virological suppression) during adolescence [11].

We conducted a retrospective review of all new lymphoma diagnoses in a cohort of adolescents transitioning from paediatric to an adult HIV service between January 2007 and January 2015. Our service, based at Mortimer Market Centre in Central London, provides free HIV-care for around 4500 patients aged over 15 years from all areas of the UK including a dedicated adolescent clinic to support transition between paediatric and adult HIV services.

Over the eight-year period, 147 individuals transitioned their HIV care to our service from paediatric services. Among these, we identified five new cases of lymphoma. The total observation time was 1176 person-years. Three patients were male. The median age at HIV-1 diagnosis was 6 years (range 0-17 years) and 19 yrs (range 18-23) at lymphoma diagnosis, respectively. Median (range) CD4 counts at lymphoma diagnosis and pre-ART nadir were 340 (180 -550) and

157 (90-220) cells/ $\mu$ L, respectively. All five patients were known to have a history of intermittent or complete non-adherence in the five years prior to transitioning care, although three were known to have an undetectable HIV-1 VL at lymphoma diagnosis. Full, historical HIV-1 VL data were available for four patients (Figure 1). The mean time from initial engagement with HIV services to lymphoma diagnosis was 114 months (range 30-199). Mean estimated cumulative exposure to detectable HIV-1 viraemia (obtained *via* historical VL data, clinic attendance notes and electronic prescriptions for ART) was 170.5 months (range 118-234). Dual and triple-class ART resistance was present in one and two patients, respectively; all patients had durable therapeutic options available to them at lymphoma diagnosis.

Four patients had DLBC, the fifth had marginal zone lymphoma which transformed during chemotherapy to a high-grade DLBC. All five patients had disseminated disease (Ann Arbor stage III or IV) at initial presentation: B symptoms were present in four. Immunohistochemistry showed four were positive for Epstein-Barr virus (EBV)-encoded small RNAs (EBERs). Quantitative assessment of blood/tumour EBV load is not part of routine clinical assessment at diagnosis of HIV-associated lymphoma in UK [12]. Likewise, markers of immune activation, such as tumour necrosis factor- $\alpha$ ,  $\beta$ -microglobulin, and interleukin-10, are not assayed routinely in HIV-infected patients in our treatment centre.

The lymphoma incidence-rate (IR) for these five patients over the eight-year period is 0.425/100 person-years [95% Confidence Interval (CI) =0.424-0.426].

This figure is similar to rates previously reported in HIV-infected children and infants during the pre-ART era [IR =0.386/100 person-years, 95% CI =0.386-0.387; IR ratio (IRR) =1.10; 95% CI =0.98-1.24, p =0.1] [1]. Moreover, the IR of NHL seen in this cohort significantly exceeds the average rate observed between 2008-2010 among 15-24 year-olds in the UK general population (IR =6.4/100,000 person-years, 95% CI =4.93-8.17; IRR =25.9; 95% CI =8.31-61.7, p <0.0001) [12].

It is established that the risk of developing HIV-associated lymphoma at any given time-point directly relates to the magnitude of immunosuppression. More specifically, data from several cohort studies suggest that current (rather than nadir) CD4 count and HIV-1 viral load are the most significant parameters in determining lymphoma-risk in multivariate analysis [6, 14, 15]. It is also suggested that cumulative exposure to detectable HIV-1 viraemia increases lymphoma-risk in a dose-dependent fashion [16]. These observations are borne out in the wider epidemiology, such that the observed incidence of HIV-associated NHL has fallen by up to 90% during the ART era [15, 17].

Nevertheless, the incidence of NHL observed in our cohort is in stark excess of that observed in both the age-matched UK general population and in a cohort of HIV-infected adults with undetectable viraemia on ART – a reasonable model, we suggest, for the wider UK population in specialist HIV care [18]. Likewise, despite the universal availability of effective ART, the observed rate of lymphoma in our cohort was comparable to that seen in UK children with AIDS in the pre-ART era. All of the lymphoma cases observed in our cohort occurred in adolescents with a prolonged history of poor ART concordance and detectable HIV-1 viraemia

during childhood and early adolescence. While the small sample size limits firm conclusions, we hypothesise that this represents a perfect scenario for the development of lymphoma. Uncontrolled HIV-1 infection engenders a significant pro-inflammatory state, with high levels of immune activation occurring synchronously with immunosuppression [19, 20]. B-lymphocyte hyperstimulation, as indicated by polyclonal hypergammaglobulinaemia, is a key feature [21]. This phenomenon is amplified in the HIV-infected child as the nascent immune system fails to co-ordinate an efficient response to HIV-1 with higher viraemic set points and a faster progression to AIDS compared to those infected during later life [22-24]. Therefore, HIV-infected children bear a particularly heavy burden of immunosuppression, resulting in impaired surveillance and cytotoxic control of malignant cells and oncogenic viruses.

EBV is the most common oncogenic virus involved in the pathogenesis of HIV-associated lymphoma, with plasma EBV VL correlating directly with risk [25]. Higher plasma EBV DNA loads have been observed in children with uncontrolled HIV-1 infection compared with age-matched counterparts taking effective ART [26, 27]. Moreover, co-infection with EBV types 1 and 2 appears more common in children with uncontrolled HIV-1, which may further increase the risk of lymphomagenesis [28]. We therefore postulate that the potent theoretical interactions between uncontrolled HIV-1 infection, oncogenic viruses and an immature immune system serve to greatly increase lymphoma-risk in HIV-infected adolescents with vertically-acquired infection over that seen in those infected *via* other routes. However, we acknowledge that the lack of

supplementary data concerning quantitative EBV exposure and immune activation in our patients may limit firm conclusions in this regard.

With increased survival of children with vertically-acquired HIV infection, the numbers of adolescents transitioning from pediatric to adult HIV services in the UK has significantly increased in recent years, and although numerically a small group, these patients require considerable specialist care. This is important not only to support ART concordance at a time of immense psychosocial challenge, but also to monitor for nascent complications associated with past or present immunosuppression. Our findings suggest that clinicians caring for adolescents with vertically-acquired HIV infection should maintain a high level of vigilance for symptoms suggestive of lymphoma and should have a low threshold for diagnostic evaluation, even in the presence of undetectable viraemia on ART.

## REFERENCES

1. Evans JA, Gibb DM, Holland FJ, Tookey PA, Pritchard J, Ades AE. Malignancies in UK children with HIV infection acquired from mother to child transmission. *Arch Dis Child* 1997,**76**:330-333.
2. Alvaro-Meca A, Micheloud D, Jensen J, Diaz A, Garcia-Alvarez M, Resino S. Epidemiologic trends of cancer diagnoses among HIV-infected children in Spain from 1997 to 2008. *Pediatr Infect Dis J* 2011,**30**:764-768.
3. Gopal S, Patel MR, Yanik EL, Cole SR, Achenbach CJ, Napravnik S, *et al.* Association of early HIV viremia with mortality after HIV-associated lymphoma. *AIDS* 2013,**27**:2365-2373.
4. Pollock BH, Jenson HB, Leach CT, McClain KL, Hutchison RE, Garzarella L, *et al.* Risk factors for pediatric human immunodeficiency virus-related malignancy. *JAMA* 2003,**289**:2393-2399.
5. Achenbach CJ, Buchanan AL, Cole SR, Hou L, Mugavero MJ, Crane HM, *et al.* HIV viremia and incidence of non-Hodgkin lymphoma in patients successfully treated with antiretroviral therapy. *Clin Infect Dis* 2014,**58**:1599-1606.
6. Collaboration of Observational HIV Epidemiological Research in Europe (COHERE) Study Group, Bohlius J, Schmidlin K, Costagliola D, Fatkenheuer G, May M, *et al.* Incidence and risk factors of HIV-related non-Hodgkin's lymphoma in the era of combination antiretroviral therapy: a European multicohort study. *Antivir Ther* 2009,**14**:1065-1074.
7. Lemberg DA, Palasanthiran P, Goode M, Ziegler JB. Tolerabilities of antiretrovirals in paediatric HIV infection. *Drug Saf* 2002,**25**:973-991.



8. Doerholt K, Duong T, Tookey P, Butler K, Lyall H, Sharland M, *et al.* Outcomes for human immunodeficiency virus-1-infected infants in the United Kingdom and Republic of Ireland in the era of effective antiretroviral therapy. *Pediatr Infect Dis J* 2006,**25**:420-426.
9. Menson EN, Walker AS, Sharland M, Wells C, Tudor-Williams G, Riordan FA, *et al.* Underdosing of antiretrovirals in UK and Irish children with HIV as an example of problems in prescribing medicines to children, 1997-2005: cohort study. *BMJ* 2006,**332**:1183-1187.
10. de Mulder M, Yebra G, Navas A, de Jose MI, Gurbindo MD, Gonzalez-Tome MI, *et al.* High drug resistance prevalence among vertically HIV-infected patients transferred from pediatric care to adult units in Spain. *PLoS One* 2012,**7**:e52155.
11. Martinez J, Bell D, Camacho R, Henry-Reid LM, Bell M, Watson C, *et al.* Adherence to antiviral drug regimens in HIV-infected adolescent patients engaged in care in a comprehensive adolescent and young adult clinic. *J Natl Med Assoc* 2000,**92**:55-61.
12. Bower M, Palfreeman A, Alfa-Wali M, Bunker C, Burns F, Churchill D, *et al.* British HIV Association guidelines for HIV-associated malignancies 2014. *HIV Med* 2014,**15 Suppl 2**:1-92.
13. *Non-Hodgkin lymphoma incidence statistics* [Online]. Cancer Research UK. Available: <http://www.cancerresearchuk.org/health-professional/cancer-statistics/statistics-by-cancer-type/non-hodgkin-lymphoma/incidence> [Accessed 4th June 2015].

14. Bower M, Fisher M, Hill T, Reeves I, Walsh J, Orkin C, *et al.* CD4 counts and the risk of systemic non-Hodgkin's lymphoma in individuals with HIV in the UK. *Haematologica* 2009,**94**:875-880.
15. Polesel J, Clifford GM, Rickenbach M, Dal Maso L, Battegay M, Bouchardy C, *et al.* Non-Hodgkin lymphoma incidence in the Swiss HIV Cohort Study before and after highly active antiretroviral therapy. *AIDS* 2008,**22**:301-306.
16. Zoufaly A, Stellbrink HJ, Heiden MA, Kollan C, Hoffmann C, van Lunzen J, *et al.* Cumulative HIV viremia during highly active antiretroviral therapy is a strong predictor of AIDS-related lymphoma. *J Infect Dis* 2009,**200**:79-87.
17. Diamond C, Taylor TH, Aboumrad T, Anton-Culver H. Changes in acquired immunodeficiency syndrome-related non-Hodgkin lymphoma in the era of highly active antiretroviral therapy: incidence, presentation, treatment, and survival. *Cancer* 2006,**106**:128-135.
18. Yin Z BA, Hughes G, Nardone A, Gill ON, Delpech VC, *et al.* HIV in the United Kingdom 2014 Report: data to end 2013. London: Public Health England; November 2014.
19. Paiardini M, Muller-Trutwin M. HIV-associated chronic immune activation. *Immunol Rev* 2013,**254**:78-101.
20. Appay V, Sauce D. Immune activation and inflammation in HIV-1 infection: causes and consequences. *J Pathol* 2008,**214**:231-241.
21. Lane HC, Masur H, Edgar LC, Whalen G, Rook AH, Fauci AS. Abnormalities of B-cell activation and immunoregulation in patients with the acquired immunodeficiency syndrome. *N Engl J Med* 1983,**309**:453-458.

22. Kourtis AP, Ibegbu C, Nahmias AJ, Lee FK, Clark WS, Sawyer MK, *et al.* Early progression of disease in HIV-infected infants with thymus dysfunction. *N Engl J Med* 1996,**335**:1431-1436.
23. Barnhart HX, Caldwell MB, Thomas P, Mascola L, Ortiz I, Hsu HW, *et al.* Natural history of human immunodeficiency virus disease in perinatally infected children: an analysis from the Pediatric Spectrum of Disease Project. *Pediatrics* 1996,**97**:710-716.
24. Richardson BA, Mbori-Ngacha D, Lavreys L, John-Stewart GC, Nduati R, Panteleeff DD, *et al.* Comparison of human immunodeficiency virus type 1 viral loads in Kenyan women, men, and infants during primary and early infection. *J Virol* 2003,**77**:7120-7123.
25. Leruez-Ville M, Seng R, Morand P, Boufassa F, Boue F, Deveau C, *et al.* Blood Epstein-Barr virus DNA load and risk of progression to AIDS-related systemic B lymphoma. *HIV Med* 2012,**13**:479-487.
26. Ling PD, Vilchez RA, Keitel WA, Poston DG, Peng RS, White ZS, *et al.* Epstein-Barr virus DNA loads in adult human immunodeficiency virus type 1-infected patients receiving highly active antiretroviral therapy. *Clin Infect Dis* 2003,**37**:1244-1249.
27. Bibas M, Antinori A. EBV and HIV-Related Lymphoma. *Mediterr J Hematol Infect Dis* 2009,**1**:e2009032.
28. Ometto L, Menin C, Masiero S, Bonaldi L, Del Mistro A, Cattelan AM, *et al.* Molecular profile of Epstein-Barr virus in human immunodeficiency virus type 1-related lymphadenopathies and lymphomas. *Blood* 1997,**90**:313-322.



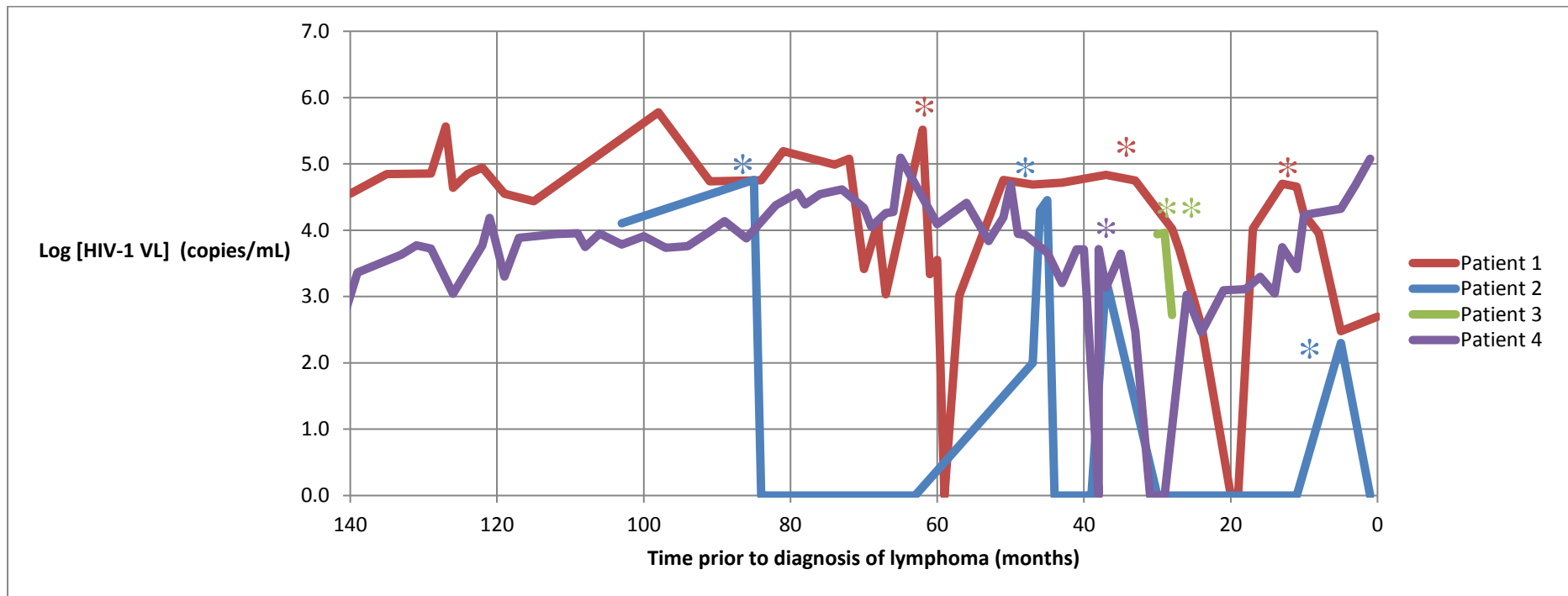


Figure 1: **HIV-1 viraemia in the time period prior to diagnosis of lymphoma**

Key: Historical viral load data was available for four cases. The remaining patient was known to have an undetectable HIV-1 viral load at the time of lymphoma diagnosis. \*: Antiretroviral therapy (ART) (re)commenced. \*\*: This individual was diagnosed with HIV-1 infection, and was commenced on ART immediately. He defaulted from care after 1 month, stopping ART and represented 24 months later with lymphoma-related symptoms and an HIV-1 VL of 3.4 log copies/ml.