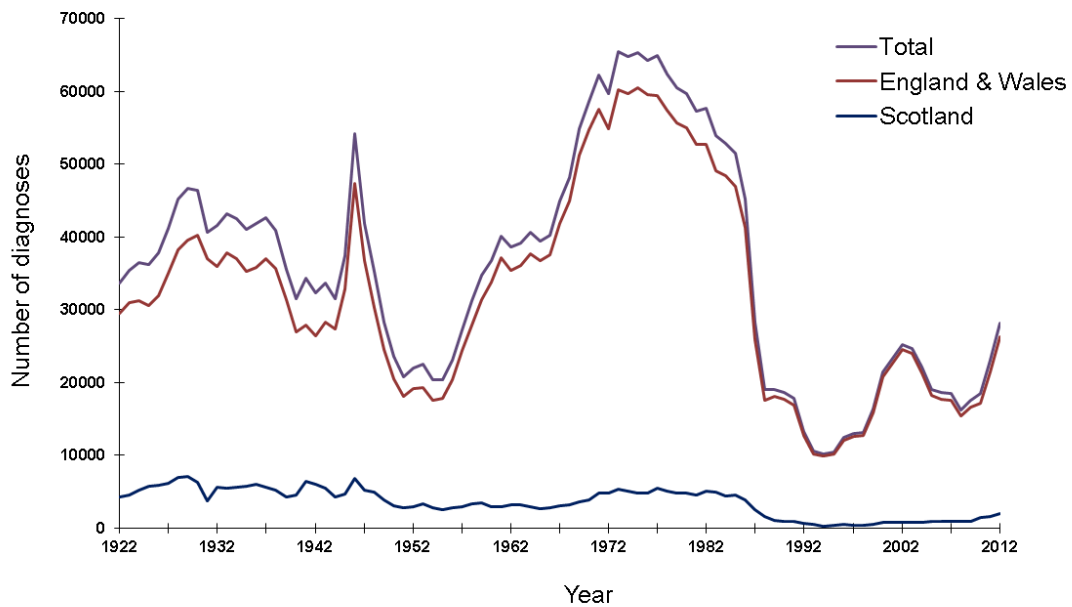
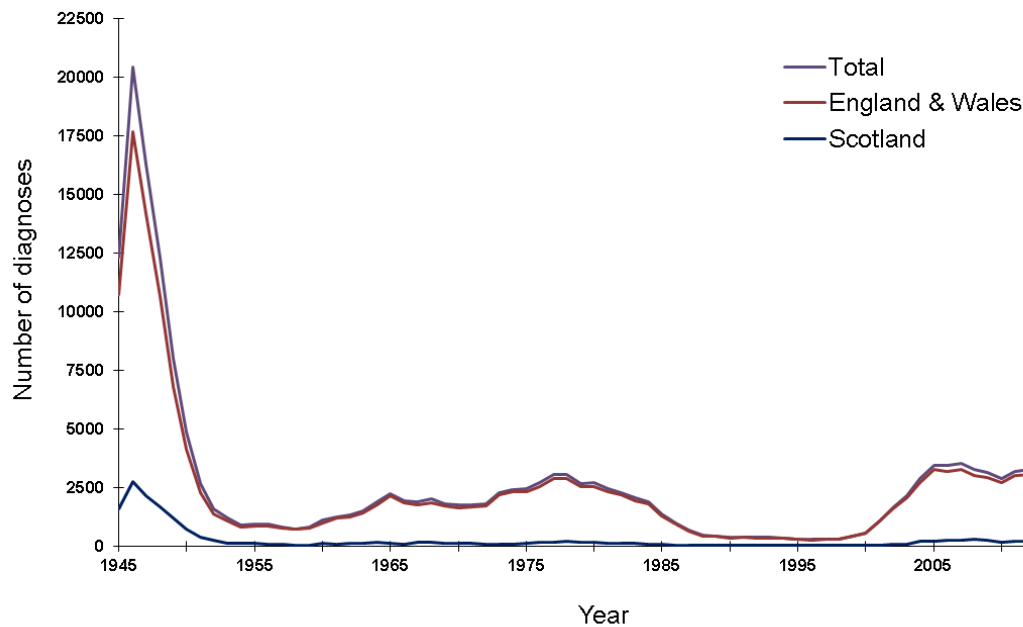


Figure 1a. Diagnoses of gonorrhoea in England, Wales & Scotland: 1922 to 2012



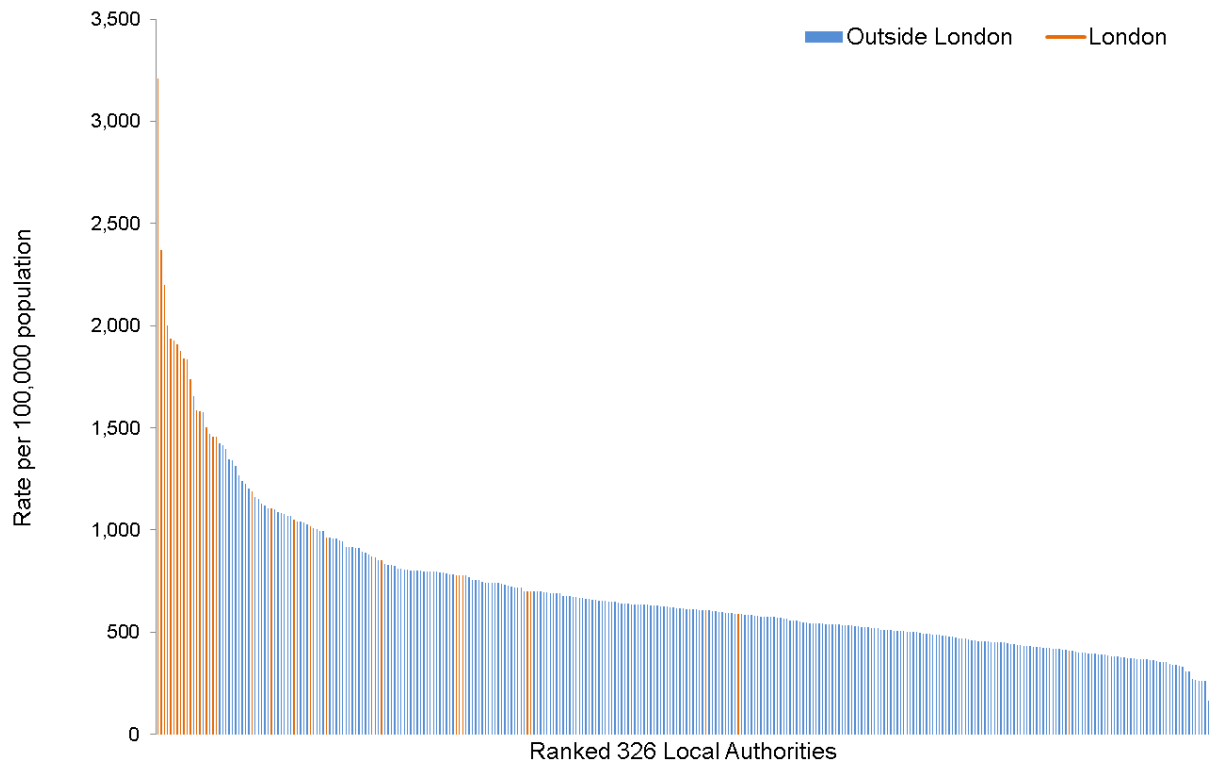
Data produced by Public Health England © Crown copyright 2014

Figure 1b. Diagnoses of syphilis in England, Wales & Scotland: 1945 to 2012



Data produced by Public Health England © Crown copyright 2014

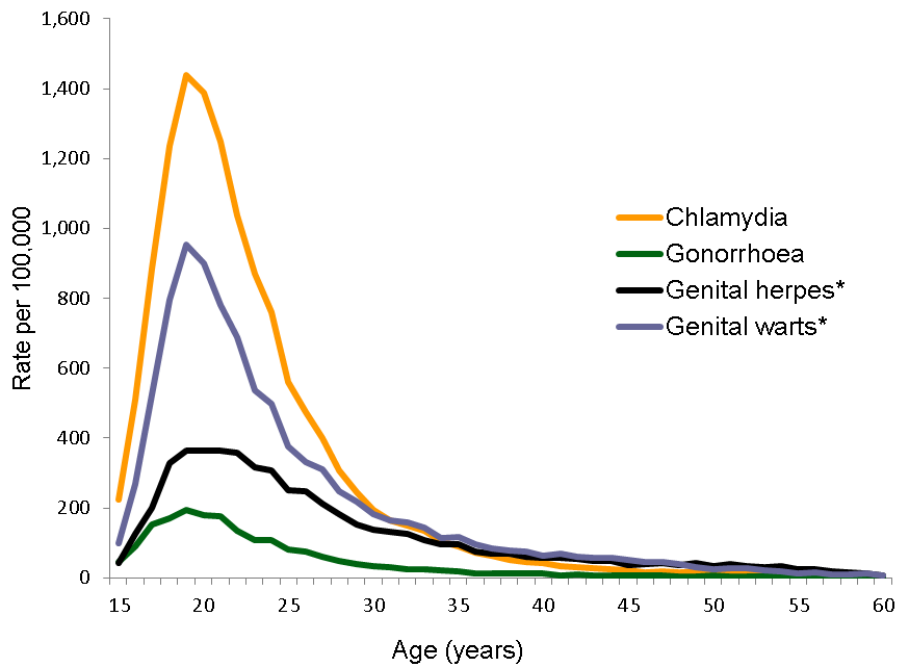
Figure 2. Range in rates of STI diagnosis in 326 local government authority areas of residence in England, 2012



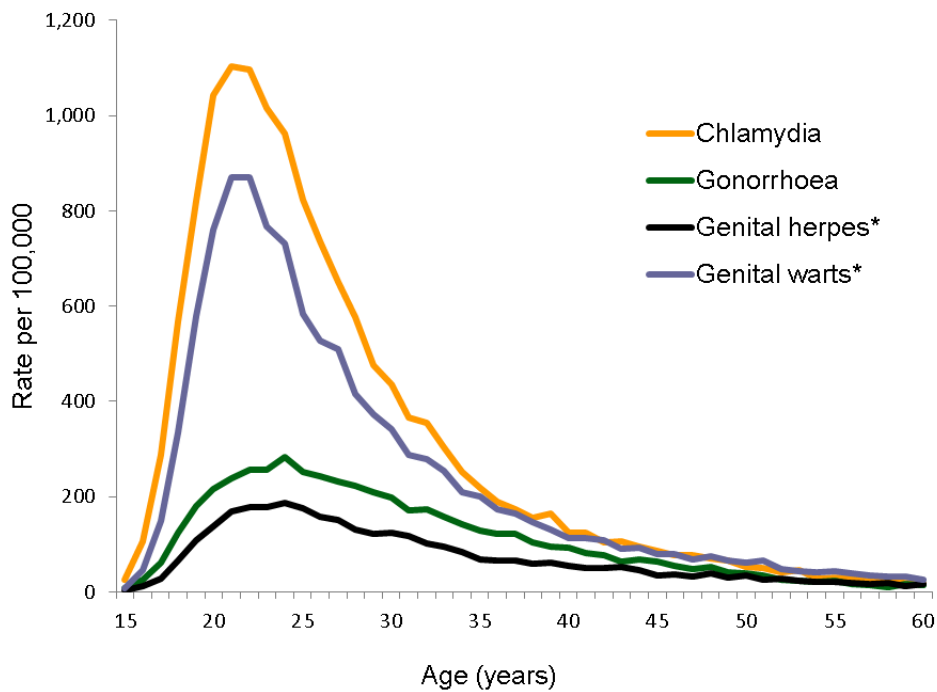
Data produced by Public Health England © Crown copyright 2014

Figure 3. Age distribution of selected STIs (rate/100,000) diagnosed in England, 2012.

a. Women

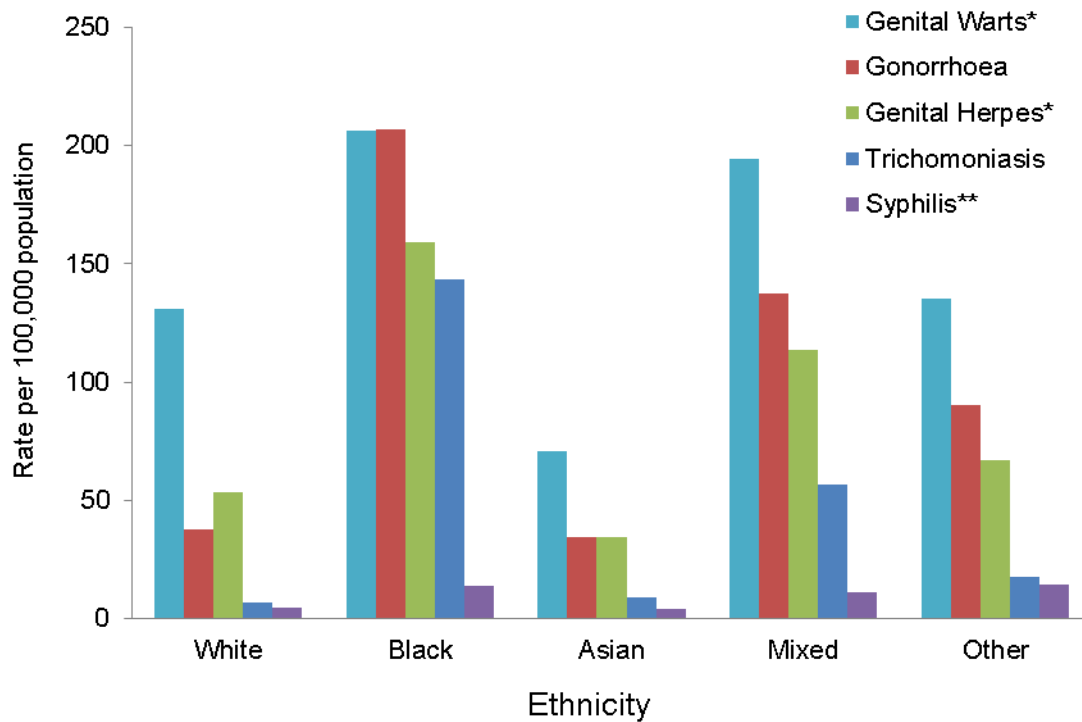


b. Men



Data produced by Public Health England © Crown copyright 2014

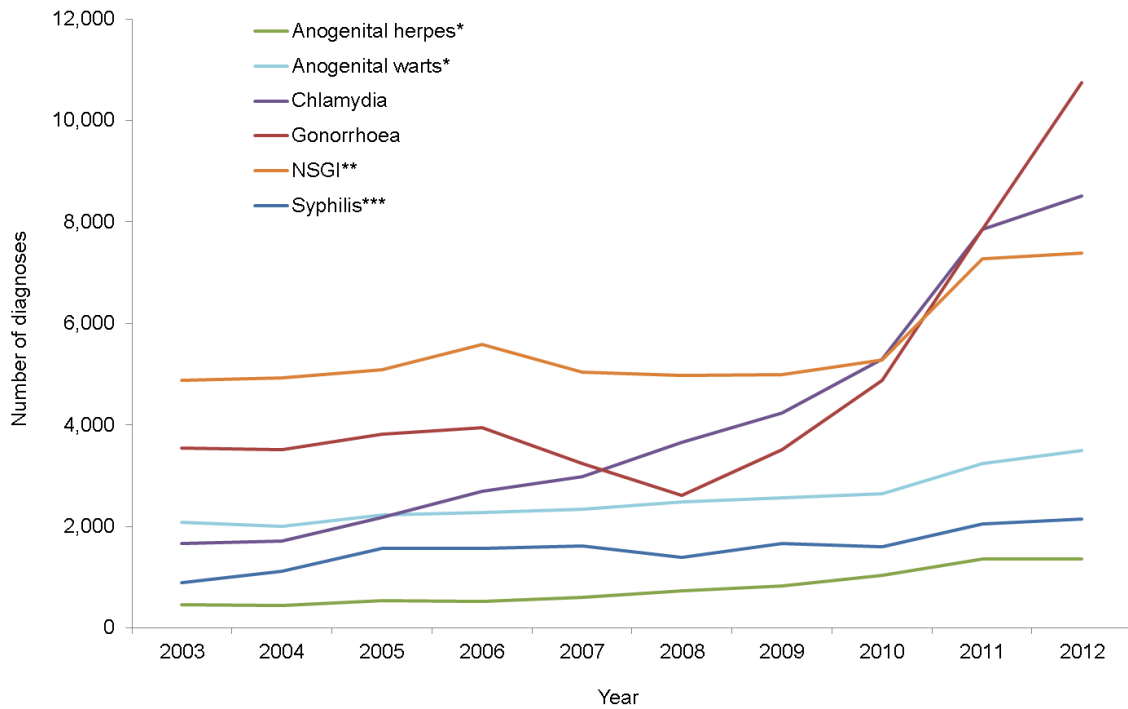
Figure 4. Rates of selected STIs diagnosed in England stratified by ethnic group, 2012.



* First episode; ** Primary, secondary and early latent

Data produced by Public Health England © Crown copyright 2014

Figure 5. Diagnoses of selected STIs in men who have sex with me in England, 2003-2012.



* First episode; ** Non-specific genital infection; *** Primary, secondary and early latent

Data produced by Public Health England © Crown copyright 2014