

**Panchromatic observations of the textbook GRB 110205A:
constraining physical mechanisms of prompt emission and
afterglow⁰**

W. Zheng¹, R. F. Shen², T. Sakamoto^{3,4,5}, A. P. Beardmore⁶, M. De Pasquale⁷, X. F. Wu^{8,9}, J. Gorosabel¹⁰, Y. Urata¹¹, S. Sugita¹², B. Zhang⁸, A. Pozanenko¹³, M. Nissinen¹⁴, D. K. Sahu¹⁵, M. Im¹⁶, T. N. Ukwatta¹⁷, M. Andreev^{18,19}, E. Klunko²⁰, A. Volnova²¹, C. W. Akerlof¹, P. Anto¹⁵, S. D. Barthelmy⁵, A. Breeveld⁷, U. Carsenty²², S. Castillo-Carrión²³, A. J. Castro-Tirado¹⁰, M. M. Chester²⁴, C. J. Chuang¹¹, R. Cunniffe¹⁰, A. De Ugarte Postigo²⁵, R. Duffard¹⁰, H. Flewelling²⁶, N. Gehrels⁵, T. Güver²⁷, S. Guziy¹⁰, V. P. Hentunen¹⁴, K. Y. Huang²⁸, M. Jelínek¹⁰, T. S. Koch²⁴, P. Kubánek¹⁰, P. Kuin⁷, T. A. McKay¹, S. Mottola²², S. R. Oates⁷, P. O'Brien⁶, M. Ohno²⁹, M. J. Page⁷, S. B. Pandey³⁰, C. Pérez del Pulgar²³, W. Rujopakarn³¹, E. Rykoff³², T. Salmi¹⁴, R. Sánchez-Ramírez¹⁰, B. E. Schaefer³³, A. Sergeev^{18,19}, E. Sonbas^{5,34,35}, A. Sota¹⁰, J. C. Tello¹⁰, K. Yamaoka³⁶, S. A. Yost³⁷, F. Yuan^{38,39}

⁰Correspondence authors : W. Zheng, zwk@umich.edu; R. Shen, rfshen@astro.utoronto.ca ; B. Zhang, zhang@physics.unlv.edu

¹University of Michigan, 450 Church Street, Ann Arbor, MI, 48109, USA

²Department of Astronomy and Astrophysics, University of Toronto, Toronto, Ontario, M5S 3H4, Canada

³Center for Research and Exploration in Space Science and Technology (CRESST), NASA Goddard Space Flight Center, Greenbelt, MD 20771

⁴Joint Center for Astrophysics, University of Maryland, Baltimore County, 1000 Hilltop Circle, Baltimore, MD 21250

⁵NASA Goddard Space Flight Center, Greenbelt, MD 20771

⁶Department of Physics and Astronomy, University of Leicester, Leicester, LE1 7RH, UK

⁷Mullard Space Science Laboratory, University College London , Holmbury Road, Holmbury St. Mary, Dorking RH5 6NT, UK

⁸Department of Physics and Astronomy, University of Nevada Las Vegas, Las Vegas, NV 89154, USA

⁹Purple Mountain Observatory, Chinese Academy of Sciences, Nanjing 210008, China

¹⁰Instituto de Astrofísica de Andalucía (IAA-CSIC), 18008 Granada, Spain

¹¹Institute of Astronomy, National Central University, Chung-Li 32054, Taiwan

¹²EcoTopia Science Institute, Nagoya University, Furo-cho, chikusa, Nagoya 464-8603, Japan

¹³Space Research Institute (IKI), 84/32 Profsoyuznaya st., Moscow 117997, Russia

¹⁴Taurus Hill Observatory, Härkämäentie 88, 79480 Kangaslampi, Finland

¹⁵CREST, Indian Institute of Astrophysics, Koramangala, Bangalore, 560 034, India

¹⁶Center for the Exploration of the Origin of the Universe, Department of Physics & Astronomy, FPRD, Seoul National University, Shillim-dong, San 56-1, Kwanak-gu, Seoul, Korea

¹⁷Department of Physics and Astronomy, Michigan State University, East Lansing, MI 48824, USA

¹⁸Terskol Branch of Institute of Astronomy of RAS, Kabardino-Balkaria Republic 361605, Russian Federation

¹⁹International Centre of Astronomical and Medico-Ecological Research of NASU, 27 Akademika Zabolotnoho st., 03680 Kyiv, Ukraine

²⁰Institute of Solar-Terrestrial Physics, Lermontov st., 126a, Irkutsk 664033, Russia

²¹Sternberg Astronomical Institute, Moscow State University, Universitetsky pr., 13, Moscow 119992, Russia

²²Institute of Planetary Research, DLR, 12489 Berlin, Germany

²³Universidad de Málaga, Campus de Teatinos, Málaga, Spain.

²⁴Department of Astronomy & Astrophysics, Penn State University, 525 Davey Laboratory, University

ABSTRACT

We present a comprehensive analysis of a bright, long duration ($T_{90} \sim 257$ s) GRB 110205A at redshift $z = 2.22$. The optical prompt emission was detected by *Swift*/UVOT, ROTSE-IIIb and BOOTES telescopes when the GRB was still radiating in the γ -ray band, with optical lightcurve showing correlation with γ -ray data. Nearly 200 s of observations were obtained simultaneously from optical, X-ray to γ -ray (1 eV - 5 MeV), which makes it one of the exceptional cases to study the broadband spectral energy distribution during the prompt emission phase. In particular, we clearly identify, for the first time, an interesting two-break energy spectrum, roughly consistent with the standard synchrotron emission model in the fast cooling regime. Shortly after prompt emission (~ 1100 s), a bright ($R =$

Park, PA 16802, USA

²⁵Dark Cosmology Centre, Niels Bohr Institute, University of Copenhagen, Juliane Maries Vej 30, DK-2100 Copenhagen O, Denmark

²⁶Institute for Astronomy, 2680 Woodlawn Ave, Honolulu, HI, 96822

²⁷Department of Astronomy, University of Arizona, 933 N. Cherry Ave., Tucson, AZ 85721

²⁸Academia Sinica Institute of Astronomy and Astrophysics, Taipei 106, Taiwan

²⁹Japan Aerospace Exploration Agency, Institute of Space and Astronautical Science, 3-1-1 Yoshinodai, Chuo-ku, Sagamihara, Kanagawa 252-5210, Japan

³⁰Aryabhata Research Institute of observational sciencES (ARIES), Manora Peak, Naini Tal, 263129, India

³¹Steward Observatory, The University of Arizona, Tucson, AZ 85721, USA

³²E. O. Lawrence Berkeley National Lab, 1 Cyclotron Rd., Berkeley CA, 94720, USA

³³Department of Physics and Astronomy, Louisiana State University, Baton Rouge, LA, 70803, USA

³⁴University of Adiyaman, Department of Physics, 02040 Adiyaman, Turkey

³⁵Universities Space Research Association, 10211 Wincopin Circle, Suite 500, Columbia, MD 21044-3432, USA

³⁶Department of Physics and Mathematics, Aoyama Gakuin University, 5-10-1 Fuchinobe, Chuo-ku, Sagamihara, Kanagawa 252-5258, Japan

³⁷Department of Physics, College of St. Benedict, Collegeville, MN 56321, USA

³⁸Research School of Astronomy and Astrophysics, The Australian National University, Weston Creek, ACT 2611, Australia

³⁹ARC Centre of Excellence for All-sky Astrophysics (CAASTRO)

14.0) optical emission hump with very steep rise ($\alpha \sim 5.5$) was observed which we interpret as the the reverse shock emission. It is the first time that the rising phase of a reverse shock component has been closely observed. The full optical and X-ray afterglow lightcurves can be interpreted within the standard reverse shock (RS) + forward shock (FS) model. In general, the high quality prompt and afterglow data allow us to apply the standard fireball model to extract valuable information including the radiation mechanism (synchrotron), radius of prompt emission ($R_{\text{GRB}} \sim 3 \times 10^{13}$ cm), initial Lorentz factor of the outflow ($\Gamma_0 \sim 250$), the composition of the ejecta (mildly magnetized), as well as the collimation angle and the total energy budget.

Subject headings: gamma rays: bursts : individual : GRB 110205A

1. Introduction

Gamma-Ray Bursts (GRBs) are extremely luminous explosions in the universe. A standard fireball model (e.g. Rees & Mészáros 1992, 1994; Mészáros & Rees 1997; Wijers, Rees & Mészáros 1997; Sari, Piran & Narayan 1998; see e.g. Zhang & Mészáros 2004, Mészáros 2006 for reviews) has been developed following their discovery in 1973 (Klebesadel, Strong & Olson 1973) to explain their observational nature. Generally, the prompt emission can be modeled as originating from internal shocks or the photosphere of the fireball ejecta or magnetic dissipation from a magnetically dominated jet, while the afterglow emission originates from external shocks that may include both forward shock and reverse shock components (Mészáros & Rees 1997, 1999; Sari & Piran 1999).

The leading radiation mechanisms of the GRB prompt emission are synchrotron radiation, synchrotron self-Compton (SSC), and Compton upscattering of a thermal seed photon source (e.g. Zhang 2011 for a review). All these mechanisms give a “non-thermal” nature to the GRB prompt spectrum. Observationally, the prompt spectrum in the γ -ray band can be fit with a smoothly broken power-law called the Band function (Band et al. 1993). Since this function is characterized by a single break energy, it can not adequately fit the spectrum if the spectral distribution is too complex. For example, the synchrotron mechanism predicts an overall power-law spectrum characterized by several break frequencies: ν_a (self-absorption frequency), ν_m (the frequency of minimum electron injection energy), and ν_c (cooling frequency) (Sari & Esin 2001). However, due to instrumental and observational constraints, it is almost impossible to cover the entire energy range and re-construct the prompt spectrum with all three predicted break points. Thus, despite its limited number of degrees of freedom, the Band function is an empirically good description for most GRBs.

The *Swift* mission (Gehrels et al. 2004), thanks to its rapid and precise localization capability, performs simultaneous observations in the optical to γ -ray bands, allowing broadband observations of the prompt phase much more frequently than previous GRB probes. This energy range may also span up to 6 orders of magnitude (e.g. GRB 090510, Abdo et al. 2009; De Pasquale et al. 2010) if a GRB is observed by both the *Swift* and *Fermi* satellites (Atwood et al. 2009; Meegan et al. 2009). Some prompt observations have shown signatures of a synchrotron spectrum from the break energies (ν_m, ν_c) (e.g. GRB 080928, Rossi et al. 2011). Prompt optical observations can also be used to constrain the self-absorption frequency ν_a (Shen & Zhang 2009), but, so far, no GRB has been observed clearly with more than two break energies in the prompt spectrum. Meanwhile, early time observations in the optical band provide a greater chance to detect reverse shock emission which has only been observed for a few bursts since the first detection in GRB 990123 (Akerlof et al. 1999).

Here we report on the analysis of the long duration GRB 110205A triggered by the *Swift*/BAT (Barthelmy et al. 2005). Both prompt and afterglow emissions are detected with good data sampling. Broadband energy coverage over 6 orders of magnitude (1 eV - 5 MeV) during prompt emission makes this GRB a rare case from which we can study the prompt spectrum in great detail. Its bright optical ($R = 14.0$ mag) and X-ray afterglows allow us to test the different external shock models and to constrain the physical parameters of the fireball model.

Throughout this paper we adopt a standard cosmology model with $H_0 = 71$ km s $^{-1}$ Mpc $^{-1}$, $\Omega_M = 0.27$ and $\Omega_\Lambda = 0.73$. We use the usual power-law representation of flux density $F(\nu) \propto t^\alpha \nu^{-\beta}$ for the further analysis. All errors are given at the 1σ confidence level unless otherwise stated.

2. Observations and Data Reductions

2.1. Observations

At 02:02:41 UT on Feb. 5, 2011 (T_0), the *Swift*/BAT triggered and located GRB 110205A (trigger=444643, Beardmore et al. 2011). The BAT light curve shows many overlapping peaks with a general slow rise starting at T_0-120 s, with the highest peak at T_0+210 s, and ending at T_0+1500 s. T_{90} (15-350 keV) is 257 ± 25 s (estimated error including systematics). GRB 110205A was also detected by WAM (Sugita et al. 2011, also included in our analysis) onboard *Suzaku* (Yamaoka et al. 2009) and Konus-Wind (Golenetskii et al. 2011; Pal'shin 2011) in the γ -ray band. A bright, uncatalogued X-ray afterglow was promptly identified by XRT (Burrows et al. 2005a) 155.4 s after the burst (Beardmore et al.

2011). The UVOT (Roming et al. 2005) revealed an optical afterglow 164 s after the burst at location $RA(J2000) = 10^h58^m31^s.12$, $DEC(J2000) = +67^\circ31'31''.2$ with a 90%-confidence error radius of about 0.63 arc second (Beardmore et al. 2011), which was later seen to re-brighten (Chester and Beardmore 2011).

ROTSE-IIIb, located at the McDonald Observatory, Texas, responded to GRB 110205A promptly and confirmed the optical afterglow (Schaefer et al. 2011). The first image started at 02:04:03.4 UT, 82.0 s after the burst (8.4 s after the GCN notice time). The optical afterglow was observed to re-brighten dramatically to 14.0 mag \sim 1100 s after the burst, as was also reported by other groups (e.g. Klotz et al. 2011a,b; Andreev et al. 2011). ROTSE-IIIb continued monitoring the afterglow until it was no longer detectable, 1.5 hours after the trigger.

Ground-based optical follow-up observations were also performed by different groups with various instruments, some of them are presented by Cucchiara et al. (2011) and Gendre et al. (2011). In this paper, the optical data includes: Global Rent-a-Scope (GRAS) 005 telescope at New Mexico (Hentunen et al. 2011), 1-m telescope at Mt. Lemmon Optical Astronomy Observatory (LOAO; Im & Urata 2011, Lee et al. 2010), Lulin One-meter Telescope (LOT; Urata et al. 2011), 0.61-m Lightbuckets rental telescope LB-0001 in Rodeo, NM (Ukwatta et al. 2011), 2-m Himalayan Chandra Telescope (HCT; Sahu et al. 2011), Zeiss-600 telescope at Mt. Terskol observatory (Andreev et al. 2011), 1.6-m AZT-33IK telescope at Sayan Solar observatory, Mondy (Volnova et al. 2011) as well as Burst Observer and Optical Transient Exploring System (BOOTES 1 and 2 telescopes), 1.23-m and 2.2-m telescope at Calar Alto Observatory and 1.5m OSN telescope which are not reported in the GCNs.

The redshift measurement of GRB 110205A was reported by three independent groups with $z = 1.98$ (Silva et al. 2011), $z = 2.22$ (Cenko et al. 2011; Cucchiara et al. 2011) and $z = 2.22$ (Vreeswijk et al. 2011). Here we adopt $z = 2.22$ for which two observations are in very close agreement.

2.2. Data reductions

The data from *Swift* and *Suzaku*, including UVOT, XRT, BAT and WAM (50 keV - 5 MeV), were processed with the standard HEASoft software (version 6.10). The BAT and XRT data were further automatically processed by the Burst Analyser pipeline⁴¹ (Evans et

⁴¹http://www.swift.ac.uk/burst_analyser/

al. 2007, 2009, 2010), with the light curves background subtracted. For the XRT data, Windowed Timing (WT) data and Photon Counting (PC) data were processed separately. Pile-up corrections were applied if necessary, especially at early times when the source was very bright. The UVOT data were also processed with the standard procedures. A count rate was extracted within a radius of 3 or 5 arcseconds depending on the source brightness around the best UVOT coordinates. The data in each filter were binned with $\delta t/t = 0.2$ and then converted to flux density using a UVOT GRB spectral model (Poole et al. 2008; Breeveld et al 2010, 2011).

For the ground-based optical data, different methods were used for each instrument. For the ROTSE data, the raw images were processed using the standard ROTSE software pipeline. Image co-adding was performed if necessary to obtain a reasonable signal-to-noise ratio. Photometry was then extracted using the method described in Quimby et al. (2006). Other optical data were processed using the standard procedures provided by the IRAF⁴² software. A differential aperture photometry was applied with the DAOPHOT package in IRAF. Reference stars were calibrated using the photometry data from SDSS (Smith et al. 2002). *Clear(C)* band data were calibrated to *R* band.

The spectral fitting, including WAM, BAT, XRT and optical data, was performed using Xspec (version 12.5). We constructed a set of prompt emission spectra over 9 time intervals during which the optical data were available. Data from each instrument were re-binned to the same time intervals. In the afterglow phase, SEDs in 4 different epochs were constructed when we have the best coverage of multi-band data from optical to X-rays: 550 s, 1.1 ks, 5.9 ks and 35 ks. All the spectral fittings were carried out under Xspec using χ^2 statistics, except the 1.1 ks SED of the afterglow, for which C-statistics was used.

3. Multi-Wavelength Data Analysis

3.1. Broad-band prompt emission, from optical to γ -rays

Thanks to its long duration ($T_{90} = 257 \pm 25$ s), GRB 110205A was also detected by XRT and UVOT during the prompt emission phase starting from 155.4 s and 164 s after the trigger, respectively. Both XRT and UVOT obtained nearly 200 s of high quality and well sampled data during the prompt phase. ROTSE-IIIb and BOOTES also detected the optical prompt emission 82.0 s and 102 s after the trigger, respectively. Together with the

⁴²IRAF is distributed by NOAO, which is operated by AURA, Inc., under cooperative agreement with NSF.

γ -ray data collected by BAT (15 keV - 150 keV) and *Suzaku*/WAM (50 keV - 5 MeV), these multi-band prompt emission data cover 6 orders of magnitude in energy, which allow us to study the temporal and spectral properties of prompt emission in great detail.

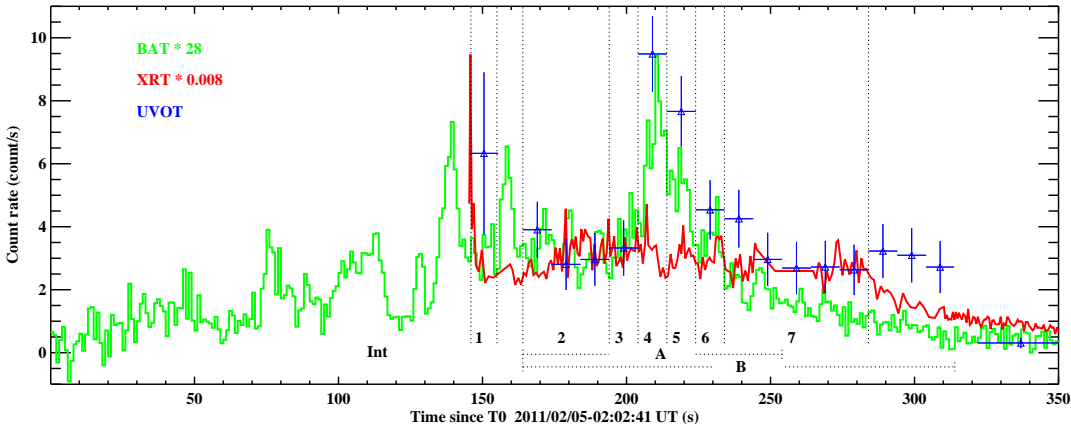


Fig. 1.— Prompt light curves of GRB 110205A from *Swift* BAT (*green*), XRT(*red*) and UVOT(*blue*). Arbitrary scale. For the UVOT data, the first data point is in *v*, but has been normalized to *white* band, the rest of the data are in *white*. The vertical lines partition 9 intervals for constructing the prompt spectra, where Int A and B are averaged ones.

Figure 1 shows the prompt light curves from *Swift* BAT (*green*), XRT (*red*) and UVOT (*blue*). The BAT light curve shows multiple peaks until at least T_0+300 s with a peak count rate at T_0+210 s. The XRT data show a decay phase from a very bright peak at the start of XRT observations, followed by smaller peaks with complicated variability. The UVOT observations were performed mainly in the *white* band, except for the first point that was observed in the *v* band but has been normalized to *white* using the late time UVOT data. The UVOT light curve shows only two major peaks. The first small peak (146 - 180 s) shows weak correlation with the BAT. After ~ 40 s, it re-brightens to its second and brightest peak at 209 s, coinciding with the brightest γ -ray peak in the BAT light curve. Overall, the optical data are smoother, and trace the BAT data better than the XRT data.

Several vertical lines shown in Figure 1 partition the light curve into 9 different intervals according to the UVOT significance criterion to obtain time-resolved joint-instrument spectral analysis using the XRT, the BAT and the WAM data. Since the prompt emission of GRB 110205A is observed by multiple instruments, the systematic uncertainty among the instruments to perform the joint analysis must be carefully understood.

The energy response function of XRT has been examined by the observations of supernova remnants and AGNs with various X-ray missions such as *Suzaku* and *XMM-Newton*.

According to the simultaneous observation of Cyg X-1 between XRT (WT mode) and *Suzaku*/XIS,⁴³ the photon index and the observed flux agree within $\sim 5\%$ and $\sim 15\%$ respectively. The spectral calibration of BAT has been based on Crab nebula observations at various boresight angles. The photon index and the flux are within $\sim 5\%$ and $\sim 10\%$ of the assumed Crab values based on Rothschild et al. (1998) and Jung et al. (1989). Similarly, the WAM energy response has been investigated using the Crab spectrum collected by the Earth occultation technique (Sakamoto et al. 2011a). The spectral shape and its normalization are consistent within 10-15% with the result of the *INTEGRAL* SPI instrument (Sizun et al. 2004). The cross-instrument calibration between BAT and WAM has been investigated deeply by Sakamoto et al. (2011b) using simultaneously observed bright GRBs. According to this work, the normalization of the BAT-WAM joint fit agrees within 10-15% to the BAT data. The cross-instrument calibration between XRT (WT mode) and BAT has been investigated by the simultaneous observation of Cyg X-1. Both the spectral shape and the flux agree within 5-10% range between XRT and BAT.⁴⁴ In summary, based on the single instrument and the cross-instrument calibration effort, the systematic uncertainty among XRT, BAT and WAM should be within 15% in both the spectral shape and its normalization of the spectrum. To accommodate systematic uncertainties, we include a multiplication factor in the range 0.85 to 1.15 for the flux normalization for each instrument.

We first applied the spectral analysis to the time-average interval B (intB, see Figure 1 for interval definition) and find that the photon index in a simple power-law model derived by the individual instrument differs significantly. The photon indices derived by the XRT, the BAT and the WAM spectra are -1.12 ± 0.03 , -1.71 ± 0.04 and $-2.27_{-0.27}^{+0.22}$, respectively (also listed in Table 1, spectral fitting errors in Table 1 and in this section are given in 90% confidence). Since these differences are significantly larger than the systematic uncertainty associated with the instrumental cross-calibration (the systematic error in the photon index is ± 0.3 for the worst case as discussed above), the apparent change of spectral slope is very likely intrinsic to the GRB. Thus, the observed broad-band spectrum requires two breaks to connect the XRT, the BAT and the WAM data.

According to the GRB synchrotron emission model, the overall spectrum should be a broken power-law characterized by several break frequencies (e.g. the self-absorption frequency ν_a , the cooling frequency ν_c , and the frequency of minimum electron injection energy ν_m). However, the well known Band function, which only includes one break energy, cannot represent the shape of the more complex spectrum of this particular event, therefore we

⁴³http://swift.gsfc.nasa.gov/docs/heasarc/caldb/swift/docs/xrt/SWIFT-XRT-CALDB-09_v16.pdf

⁴⁴The presentation in the 2009 *Swift* conference: <http://www.swift.psu.edu/swift-2009/>

extended the analysis code, Xspec, to include two additional spectral functions. The first one is a double “Band” spectrum with two spectral breaks, which was labelled *bkn2band*:

$$f(E) = \begin{cases} AE^\alpha \exp(-E/E_0), & \text{if } E \leq \frac{E_0 E_1}{E_1 - E_0}(\alpha - \beta) \\ A[\frac{E_0 E_1}{E_1 - E_0}(\alpha - \beta)]^{\alpha - \beta} \exp(\beta - \alpha) E^\beta \exp(-E/E_1), & \text{if } \frac{E_0 E_1}{E_1 - E_0}(\alpha - \beta) < E \leq (\beta - \gamma)E_1 \\ A[\frac{E_0 E_1}{E_1 - E_0}(\alpha - \beta)]^{\alpha - \beta} \exp(\beta - \alpha) \cdot \\ [(\beta - \gamma)E_1]^{\beta - \gamma} \exp(\gamma - \beta) E^\gamma, & \\ \text{if } E > (\beta - \gamma)E_1 \end{cases} \quad (1)$$

where A is the normalization at 1 keV in unit of $\text{ph cm}^{-2} \text{s}^{-1} \text{keV}^{-1}$, α , β , and γ are the photon indices of the three power law segments, and E_0 and E_1 are the two break energies. However, when fitting the spectrum using this new *bkn2band* model, the third power law index γ , is poorly constrained mainly due to the poor statistics in the high energy WAM data above 400 keV. For this reason, the second new model, *bandcut*, replaces the third power-law component with an exponential cutoff ⁴⁵:

$$f(E) = \begin{cases} AE^\alpha \exp(-E/E_0), & \text{if } E \leq \frac{E_0 E_1}{E_1 - E_0}(\alpha - \beta) \\ A[\frac{E_0 E_1}{E_1 - E_0}(\alpha - \beta)]^{\alpha - \beta} \exp(\beta - \alpha) E^\beta \exp(-E/E_1), & \\ \text{if } E > \frac{E_0 E_1}{E_1 - E_0}(\alpha - \beta) \end{cases} \quad (2)$$

Note that the exponential cutoff in the new *bandcut* model introduces a second break, E_1 , although different from the break in a doubly broken power-law model or *bkn2band* model. The new *bandcut* model can well characterize the prompt emission spectra of GRB 110205A. Hereafter, we use “two-break energy spectrum” to represent the *bandcut* model spectrum. Figure 2 shows the XRT, BAT and WAM joint fit spectral analysis of intB based on the *bandcut* model and the Band function fit. The systematic residuals from the best fit Band function are evident especially in the WAM data. The best fit parameters based on the *bandcut* model are $\alpha = -0.50_{-0.08}^{+0.09}$, $E_0 = 5.0_{-0.8}^{+1.1}$ keV, $\beta = -1.54_{-0.09}^{+0.10}$ and $E_1 = 333_{-118}^{+265}$ keV ($\chi^2/\text{dof} = 529.8/503$). On the other hand, the best fit parameters based on the Band

⁴⁵Both *bkn2band* and *bandcut* new models can be downloaded from the following web page: <http://asd.gsfc.nasa.gov/Takanori.Sakamoto/personal/>. They can be used to fit future GRBs with similar characteristics.

function are $\alpha = -0.59_{-0.08}^{+0.06}$, $\beta = -1.72_{-0.03}^{+0.01}$ and $E_{\text{peak}} = 9.5_{-0.9}^{+1.5}$ keV ($\chi^2/\text{dof} = 575.7/504$). Therefore, $\Delta\chi^2$ ($\equiv \chi_{\text{Band}}^2 - \chi_{\text{bandcut}}^2$) between the Band function and the *bandcut* model is 45.9 for 1 dof. To quantify the significance of this improvement, we performed 10,000 spectral simulations assuming the best fit Band function parameters by folding the energy response functions and the background data of XRT, BAT and WAM. Then, we determine how many cases the *bandcut* model fit gives χ^2 improvements of equal or greater than $\Delta\chi^2 = 45.9$ for 1 dof over the Band function fit. We found equal or higher improvements in none of the simulated spectra out of 10,000. Thus, the chance probability of having an equal or higher $\Delta\chi^2$ of 45.9 with the *bandcut* when the parent distribution is actually the Band function is $<0.01\%$. A caveat for this simulation is that the statistical improvement of the joint fit may be not as high as this simulation indicates if the calibration uncertainties among the instruments are included.

The same method is then applied to perform the joint spectral fitting to the remaining time intervals. Table 1 shows the best fit results from the *bandcut* model. This is the first time when two spectral breaks are clearly identified in the prompt GRB spectra. The two breaks are consistent with the expectation of the broken power law synchrotron spectrum (see discussion in §4.1).

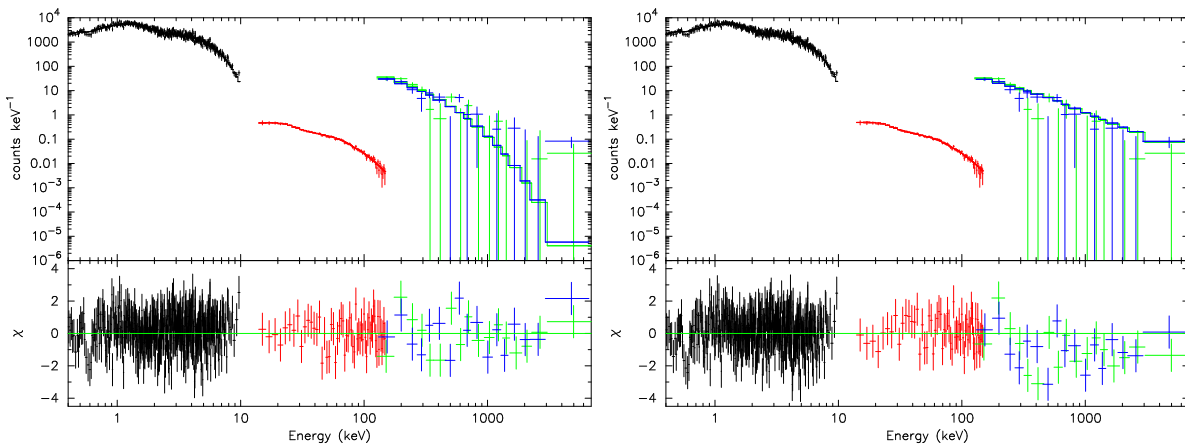


Fig. 2.— The XRT (black), BAT (red) and WAM (green and blue) count spectra of intB with the *bandcut* model (left panel) and the standard Band function (right panel) fit. The improvement using *bandcut* model can be easily seen in the residual panel at the bottom.

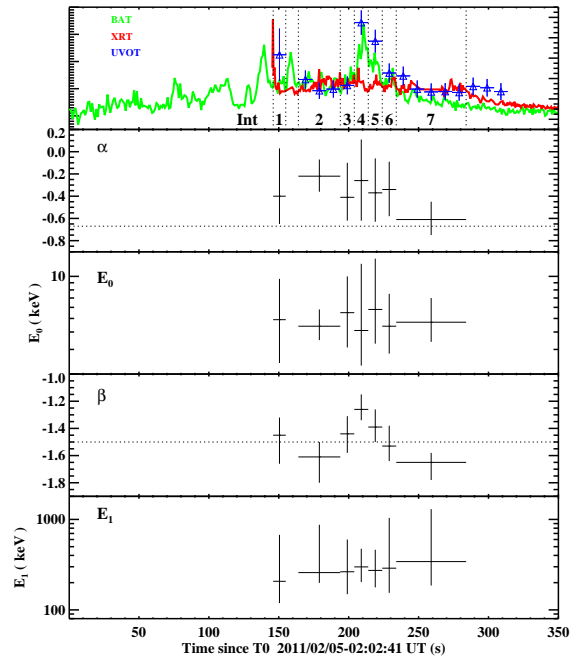


Fig. 3.— Time evolution of different parameters from the time-resolved spectral fitting of GRB 110205A. Top panel has the same key as Figure 1. The two horizontal dotted lines in α and β panels are the predicted synchrotron photon index value for fast cooling phase from the standard GRB fireball model. Errors are given at 90% confidence except the top panel.

Table 1. Best spectral fit result from XRT, BAT and WAM joint fitting with *bandcut* model. The last three columns show the photon index from each single instrument fitting. Errors are given in 90% confidence.

Int	t ₁	t ₂	α	E ₀	β	E ₁	χ^2/dof	XRT	BAT	WAM
int1	146	155	-0.40 ^{+0.43} _{-0.25}	4.9 ^{+4.7} _{-2.5}	-1.45 ^{+0.13} _{-0.21}	207 ⁺⁴⁶⁸ ₋₈₈	126.4/137=0.92	-1.05 ^{+0.11} _{-0.11}	-1.68 ^{+0.09} _{-0.09}	-2.24 ^{+0.48} _{-0.70}
int2	164	194	-0.22 ^{+0.15} _{-0.14}	4.4 ^{+1.4} _{-0.9}	-1.61 ^{+0.11} _{-0.19}	258 ⁺⁶¹⁵ ₋₅₉	269.7/256=1.05	-0.94 ^{+0.05} _{-0.06}	-1.81 ^{+0.06} _{-0.06}	-2.72 ^{+0.63} _{-0.84}
int3	194	204	-0.41 ^{+0.31} _{-0.21}	5.5 ^{+4.5} _{-2.4}	-1.44 ^{+0.13} _{-0.14}	264 ⁺³³⁶ ₋₁₁₅	138.5/145=0.96	-0.99 ^{+0.10} _{-0.11}	-1.62 ^{+0.08} _{-0.08}	-2.14 ^{+0.57} _{-0.98}
int4	204	214	-0.26 ^{+0.37} _{-0.36}	4.1 ^{+8.2} _{-1.8}	-1.26 ^{+0.11} _{-0.08}	299 ⁺¹⁷⁵ ₋₉₆	107.6/146=0.74	-0.91 ^{+0.09} _{-0.10}	-1.45 ^{+0.05} _{-0.06}	-2.22 ^{+0.20} _{-0.25}
int5	214	224	-0.37 ^{+0.31} _{-0.26}	5.8 ^{+7.6} _{-2.5}	-1.39 ^{+0.13} _{-0.11}	273 ⁺¹⁸⁹ ₋₉₆	144.5/144=1.00	-0.87 ^{+0.09} _{-0.10}	-1.58 ^{+0.06} _{-0.06}	-2.42 ^{+0.43} _{-0.43}
int6	224	234	-0.34 ^{+0.25} _{-0.24}	4.4 ^{+3.1} _{-1.6}	-1.53 ^{+0.15} _{-0.11}	289 ⁺⁷⁵⁰ ₋₁₃₅	146.9/142=1.03	-1.00 ^{+0.09} _{-0.10}	-1.72 ^{+0.08} _{-0.08}	-1.98 ^{+0.38} _{-0.63}
int7	234	284	-0.61 ^{+0.16} _{-0.14}	4.7 ^{+2.3} _{-1.3}	-1.65 ^{+0.07} _{-0.13}	342 ⁺⁹⁵⁸ ₋₁₅₆	248.8/233=1.07	-1.24 ^{+0.06} _{-0.06}	-1.78 ^{+0.08} _{-0.08}	-2.00 ^{+0.55} _{-1.16}
intA	164	254	-0.32 ^{+0.10} _{-0.10}	4.7 ^{+1.1} _{-0.8}	-1.52 ^{+0.10} _{-0.07}	346 ⁺²²⁹ ₋₁₁₅	430.9/437=0.99	-1.00 ^{+0.03} _{-0.04}	-1.68 ^{+0.04} _{-0.04}	-2.28 ^{+0.19} _{-0.24}
intB	164	314	-0.50 ^{+0.09} _{-0.08}	5.0 ^{+1.1} _{-0.8}	-1.54 ^{+0.10} _{-0.09}	333 ⁺²⁶⁵ ₋₁₁₈	529.8/503=1.05	-1.12 ^{+0.03} _{-0.03}	-1.71 ^{+0.04} _{-0.04}	-2.27 ^{+0.22} _{-0.27}

Figure 3 shows the evolution of different parameters from the time-resolved spectral fitting between 146 s and 284 s. The two break energies, E_0 and E_1 , remain almost constant during this time range, with $E_0 \sim 5$ keV and $E_1 \sim 300$ keV. However, the large errors for E_0 and E_1 prevent us from drawing a firmer conclusion regarding the temporal evolution of the two break energies. The low energy photon index, α , also shows no statistically significant evolution. However, the high energy photon index, β , does show a weak evolution: it becomes slightly harder during the brightest BAT peak around 210 s. Over all, the α value during the time range is around -0.35 and β is around -1.5. The peak energy derived from interval

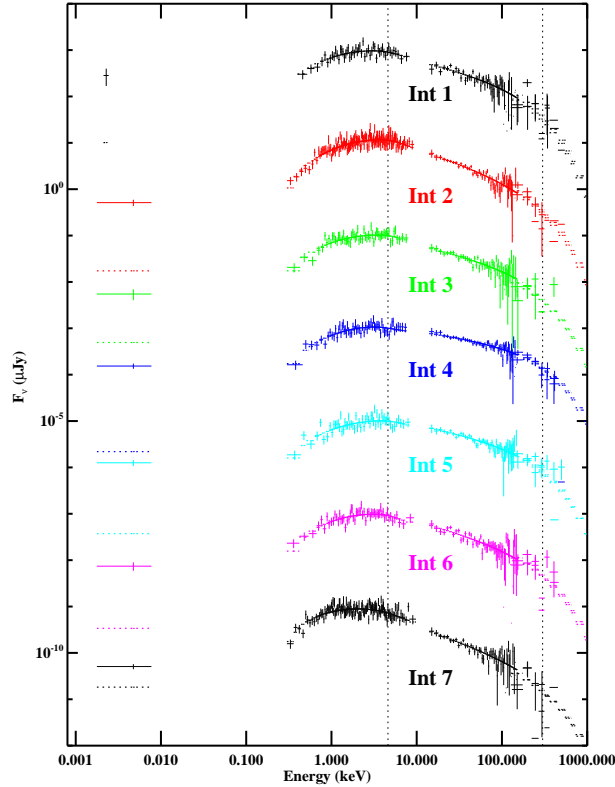


Fig. 4.— Best fit prompt spectra of GRB 110205A, different colors present different intervals (see Figure 1 for interval definition). Note that WAM data above 400 keV is not shown in the figure due to large uncertainties when transforming counts to flux density in Xspec above this energy range. Intervals 2 to 7 are shifted by a factor of 10^{-2} accumulatively for a purpose of clarity. UVOT optical data is not included during the fitting, but it is shown in the best fit spectrum. Solid lines present the observed data while dashed lines present the prediction of best fit *bandcut* model. The two vertical lines show the mean value of E_0 and E_1 from the fitting.

B (intB) is $E_p = (2 + \beta)E_1 = 153_{-54}^{+121}$ keV.

Although the UVOT optical data are not included in the spectral fitting, they are shown in the best fit spectra in Figure 4. For all the intervals, the optical data are above the extrapolation of the best spectral fits for high energies. A speculation may be that the observed α is somehow harder than the expected value of the synchrotron model. However, even if we set α to the predicted value, $-2/3$, the optical data are still above the best fit spectra in some intervals. This suggests that the optical emission may have a different origin from the high energy emission (see §4 for more detailed discussion).

3.2. Afterglow analysis

3.2.1. Light curves

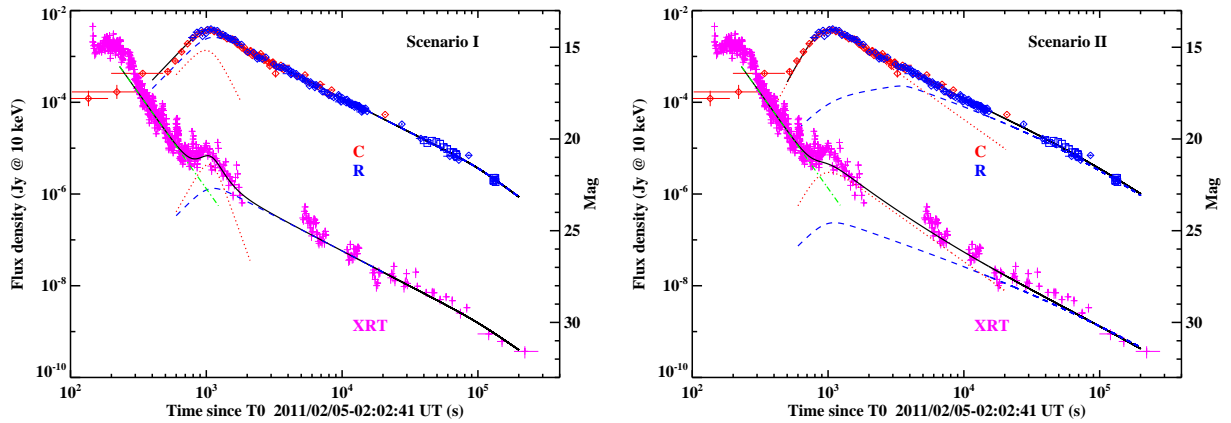


Fig. 5.— GRB 110205A light curves from XRT data (*pink cross*) and optical data, including *C* band (*red diamond*) and *R* band (*blue square*). Two scenarios are considered. Both scenarios consider superposition of FS (dashed line) and RS (dotted line) contribution. The main difference is that Scenario I (left panel) considers the optical peak is dominated by both FS and RS combination while Scenario II considers the optical peak is dominated by RS only. The dot-dashed line represents the step decay phase for X-ray data. The solid line represents the combination of all components.

Shortly after the prompt emission, the optical light curve is characterized by a surprisingly steep rise and a bright peak around 1100 s. The early step rise, starting around 350 s, is observed by both ROTSE and UVOT and the peak, which is wide and smooth, reaches $R = 14.0$ mag at 1073 s after the burst. Such a bright peak around this time with such a steep

rise is rare and unusual (Oates et al. 2009; Panaitescu & Vestrand 2011) and has only been reported in a few cases (e.g. Volnova et al. 2010; Nardini et al. 2011). A peak brightness of $R = 14.0$ mag at ~ 1100 s after the burst ranks the optical afterglow as one of the brightest ever observed in this same time range (Akerlof & Swan 2007). Following the peak, the light curve decays monotonically, as shown in Figure 5, and displays a slight flattening around 3000 s. Around 5×10^4 s, there is a re-brightening feature observed in the g', r', i', z' bands by LOT (Figure 6) and a final steepening is observed after $\sim 10^5$ s. Overall, no substantial color evolution is observed in the optical band.

The X-ray data show a different temporal behavior (see also Figure 5). Shortly after the prompt emission, the light curve has a very steep decay, between 350 s and 700 s. This is followed by a small re-brightening bump around 1100 s, the peak time of the optical light curve, and a monotonic decay afterwards. There might be a late X-ray flare around 5000 s, but the lack of X-ray data just before ~ 5000 s prevents any robust conclusion from being drawn.

The light curves were fit with one or the superposition of two broken-power-law functions. The broken power-law function has been widely adopted to fit afterglow light curves with both the rising and decay phases (e.g. Rykoff et al. 2009) and works well for most cases (e.g. Liang et al. 2010). The function can be represented as:

$$f = \left(\frac{t}{t_b}\right)^{\alpha_1} \left[1 + \left(\frac{t}{t_b}\right)^{s(\alpha_1 - \alpha_2)}\right]^{-\frac{1}{s}}, \quad (3)$$

where f is the flux, t_b is the break time, α_1 and α_2 are the two power law indices before and after the break, and s is a smoothing parameter. According to this definition, the peak time t_p , where the flux reaches maximum, is

$$t_p = t_b \left(\frac{\alpha_1}{-\alpha_2}\right)^{\frac{1}{s(\alpha_1 - \alpha_2)}}. \quad (4)$$

If a multi broken-power-law function is required to present more than one break times, equation 2 in van Eerten & MacFadyen (2011) is adopted. We first tried one broken power law component, and found that it could not fully represent the feature near the optical peak, mainly because of its unusually late and steep rising feature, which was not observed in previous GRBs, and a slight flattening feature around 3000 s after the peak shown in R band. Noticing that there is a peak both in the optical and the X-ray light curves around 1100 s and that the optical light curve flattens around 3000 s, we speculate that there is a significant contribution of emission from the reverse shock (RS). A RS contribution to the X-ray band has not been well identified in the past. Theoretically, the RS synchrotron emission peaks around the optical band so that its synchrotron extension to the X-ray band

is expected to be weak. In any case, under certain conditions, it is possible that the RS synchrotron (Fan & Wei 2005; Zou et al. 2005) or SSC (Kobayashi et al. 2007) emission would contribute significantly to the X-ray band to create a bump feature. In order to account for both the FS and the RS components, we fit both the optical and X-ray light curves with the superposition of two broken-power-law functions. For the X-ray light curve, an additional single power-law component was applied for the steep decay phase, as usually seen in *Swift* afterglows (e.g. Tagliaferri et al. 2005).

Two light curve models have been adopted. The standard afterglow model predicts that the blast wave enters the deceleration phase as the reverse shock crosses the ejecta (Sari & Piran 1995; Zhang et al. 2003). If the FS ν_m is already below the optical band at the crossing time, both the FS and the RS would have a same peak time (t_p) in the optical band. This defines our first scenario, in which the optical peak is generated by both the RS and the FS. If, however, ν_m is initially above the optical band at the deceleration time, the FS optical light curve would display a rising feature ($\propto t^{1/2}$, Sari et al. 1998) initially, until reaching a peak at a later time when ν_m crosses the optical band. This is our second scenario. In this case, the early optical peak is mostly dominated by the RS component. This is the Type I light curve identified in Zhang et al. (2003) and Jin & Fan (2007). We now discuss the two scenarios in turn.

Scenario I : We performed a simultaneous fit to both optical R band data and X-ray data by setting the same break time in the two bands. A late time break is invoked to fit both the R band and X-ray light curves. However, we exclude the re-brightening feature around 5×10^4 s in the optical band, and the steep decay phase of X-rays before 400 s, which is likely the tail of the prompt emission (Zhang et al. 2006). For the FS component, the rising temporal index is fixed to be 3 based on the slow cooling ISM model during the pre-deceleration phase⁴⁶ (e.g. Xue et al. 2009; Shen & Matzner 2012). The rising slope of the RS component is left as a free parameter to be constrained from the data. The best simultaneous fit results are summarized in Table 2 and shown in Figure 5 (left panel). The *red* dot, and *blue* dashed lines represent the RS and FS components, respectively. The *black* solid line is the sum of the all components.

Next we apply the same best R -band fit parameters and re-scale to the optical data in other bands. The results are shown in Figure 6 (left panel). Light curves in different bands are properly shifted for clarity. As we can see, the model quite adequately describes most light curves. The only exception is the UVOT- u band, in which the model curve overpredicts

⁴⁶In the coasting phase of a thin shell decelerated by a constant density medium, the forward shock have the scalings $\nu_m \propto t^0$, $\nu_c \propto t^{-2}$, and $F_{\nu,m} \propto t^3$. For $\nu_m < \nu_{opt} < \nu_c$, one has $F_\nu \propto t^3$.

Table 2. Best fit result from R band and X-ray light curves.

	Scenario I		Scenario II	
Par	Optical	X-ray	Optical	X-ray
FS			FS	
α_{f1}	3*	3*	3* \rightarrow 0.5*	3*
t_p (s)	1064 \pm 42	1064#	3.64 \pm 1.0 $\times 10^3$	1021 \pm 26
F_p (Jy)	4.96 $\times 10^{-3}$	1.32 $\times 10^{-6}$	4.35 $\times 10^{-4}$	1.42 $\times 10^{-7}$
	14.48 mag		17.12 mag	
α_{f2}	-1.50 \pm 0.04	-1.54 \pm 0.10	-1.01 \pm 0.01	-1.00*
t_{jb} (s)	1.0 \pm 0.2 $\times 10^5$	1.0 $\times 10^5$ #	5.44 \pm 0.2 $\times 10^4$	5.44 $\times 10^4$ #
α_{f3}	-2.18 \pm 0.8	-2.05 \pm 0.5	-2.05 \pm 0.7	-1.75 \pm 1.0
RS			RS	
α_{r1}	3.32 \pm 1.2	5.19 \pm 1.3	5.5*	5.5*
t_p (s)	1064#	1064#	1021#	1021#
F_p (Jy)	2.47 $\times 10^{-3}$	4.40 $\times 10^{-6}$	7.19 $\times 10^{-3}$	3.59 $\times 10^{-6}$
	15.24 mag		14.07 mag	
α_{r2}	-5.90 \pm 1.0	-8.26 \pm 1.3	-2.10*	-2.10*
		Steep decay		Steep decay
α_{sd}		-4.18 \pm 0.2		-4.16 \pm 0.2

*indicates the parameter is fixed during the fitting

#indicates the parameter is simultaneously fit for both optical and X-ray data

the early time flux between 300 s to 600 s.

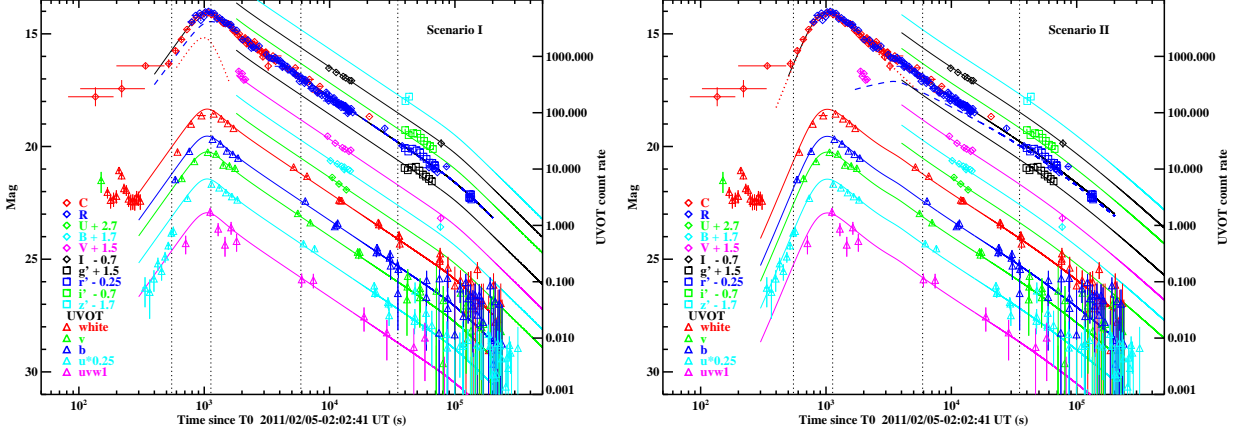


Fig. 6.— Optical light curves of GRB 110205A re-scaled from R band best fit. The early fast rise behavior in optical band can be better explained by Scenario II (right panel) than Scenario I (left panel).

Scenario II : In this scenario, the bright peak around 1100 s and the steep rise phase at early times in the optical band are contributed by the RS only. The FS component shows up later. According to the afterglow model, the FS component is characterized by a double broken power law with a rising index $+3$ before the deceleration time (t_p of the RS), $+0.5$ before the FS peak, and a normal decay (decay index to be fit from the data) after the FS peak (e.g. Sari et al. 1998; Zhang et al. 2003; Xue et al. 2009). For the RS component, the rising index is fixed to be 5.5, which is the mean value of a single power law fit to the R band data ($\alpha \sim 5$) and the UVOT- u band data ($\alpha \sim 6$) only. In the X-ray band, we still use a similar model as Scenario I with a superposition of a RS and a FS component. The model parameters are not well constrained, especially for the X-ray peak around 1100 s due to its narrow peak. We tried to fix several parameters in order to reach an acceptable fitting for this scenario. The best simultaneous fit results for both R band and X-ray band data are also summarized in Table 2, and shown in Figure 5 (right panel). Similar to Scenario I, we then used the same model and parameters derived from the R band fit re-scale to other light curves. The results are shown in Figure 6 (right panel), again with shifting. This scenario can well explain the early fast rise behavior in all bands.

Comparing the two scenarios, we find that Scenario I can represent most optical data, and can better account for the X-ray data than Scenario II. However, it can not well match the early very steep rise in the UVOT- u band. On the other hand, Scenario II, can represent the early fast rising behavior in all the optical band (including UVOT- u band), but the fits

to the X-ray data are not as good as Scenario I. We note that our scenario II is similar to another variant of scenario II recently proposed by Gao (2011), but we conclude that the optical data before ~ 350 s are generated by the optical prompt emission.

3.2.2. *Afterglow SED analysis*

In order to study the spectral energy distribution (SED) of the afterglow, we selected 4 epochs when we have the best multi-band data coverage: 550 s, 1.1 ks, 5.9 ks and 35 ks. Since no significant color evolution is observed in the optical data, we interpolate (or extrapolate if necessary) the optical band light curve to these epochs when no direct observations are available at the epochs. The optical data used for constructing the SED are listed in Table 3. The X-ray data are re-binned using the data around the 4 epochs. The spectral fitting is then performed using Xspec software. During the fitting, the Galactic hydrogen column density, N_H , is fixed to $1.6 \times 10^{20} \text{ cm}^{-2}$ (Kalberla et al. 2005), and the host galaxy hydrogen column density is fixed to $4.0 \times 10^{21} \text{ cm}^{-2}$. These are derived from an average spectral fitting of the late time XRT PC data. We tried both the broken-power-law and the single power-law models for the afterglow SED. For the broken-power-law model, we set $\Gamma_2 = \Gamma_1 - 0.5$, assuming a cooling break between the optical and X-ray bands. Meanwhile, we also investigated the use of three different extinction laws, namely the Milky Way (MW), Large and Small Magellanic Clouds (LMC and SMC), for the host galaxy extinction model. The $E(B-V)$ from the Galactic extinction is set to 0.01 (Schlegel et al. 1998) during the fitting. The best fit results are listed in Table 4.

The 5.9 ks and 35 ks SEDs have the best data coverage, and they are ascribable to the FS component only. We therefore use these two SEDs to constrain the extinction properties of the afterglow. We find that the SMC and LMC dust models provide acceptable and better fits than MW dust model. The data are equally well fit by the broken-power-law and the single power-law model. For the broken-power-law model, the break energy is found to be within the optical band ($0.0025 \pm 0.0006 \text{ keV}$). Within the $3\text{-}\sigma$ error, one cannot separate the optical and X-ray data to two different spectral regimes. The lack of clear breaks in optical light curves between 5.9 and 35 ks also disfavors the possibility of the break energy passing through the optical band.

Table 3. SED data (in magnitude) at 4 different epoch

time	550 s	1.13 ks	5.9 ks	35 ks
uvw1	20.13±0.50	16.91±0.18	19.71±0.30	22.50±0.70
u	17.13±0.20	14.98±0.06	17.50±0.10	20.47±0.30
b	17.54±0.16	15.23±0.05	17.92±0.07	20.97±0.30
v	17.13±0.30	14.68±0.06	17.45±0.14	20.63±0.50
white	17.80±0.12	15.25±0.05	17.92±0.05	20.74±0.22
U	-	-	17.74±0.1	20.69±0.1
B	-	-	18.05±0.1	20.86±0.1
V	-	-	17.24±0.1	20.20±0.1
R	16.07±0.20	14.10±0.06	16.84±0.1	19.73±0.1
I	-	-	16.39±0.1	19.21±0.1
g	-	-	-	20.76±0.07
r	-	-	-	20.12±0.05
i	-	-	-	19.76±0.06
z	-	-	-	19.46±0.09

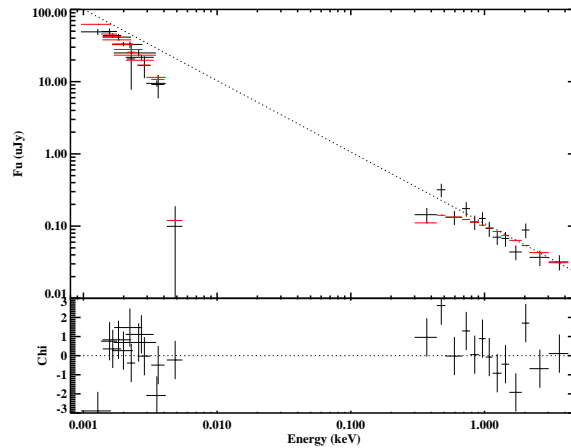


Fig. 7.— Afterglow SED of GRB 110205A at 35 ks. *Black* points are the observed data, *red* points are the predicted value from the model. Dotted line is the original power-law model without absorption or extinction.

3.3. Host galaxy search

We have performed a deep search for the host galaxy of the GRB. Observations were performed with the 2.2 m Calar Alto telescope 3.7 months after the burst. Images were taken with the BUSCA instrument in the u' , g' , r' and i' bands under good seeing condition, with image resolution of $\sim 0.9''$. Co-adding was applied to a set of individual images in order to obtain a deeper limiting magnitude. Figure 8 shows one of the images taken in the r' band. The center of the circle indicates the afterglow location.

No clear source was detected near the afterglow location within a radius of $5''$. The typical 3σ upper limits (AB magnitudes) are: $u' \sim 24.1$, $g' \sim 24.4$, $r' \sim 24.8$ and $i' \sim 25.2$. A non-detection of the GRB host galaxy at $r' \sim 24.8$ is not surprising since a lot of GRB host galaxies are faint (e.g. Savaglio et al. 2009) or not detected at all (e.g. Ovaldsen et al. 2007). It is also superseded by the much deeper observation reported by Cucchiara et al. (2011) down to upper limit of $r' \sim 27.21$ magnitudes. At redshift $z=2.22$, a magnitude of $r' \sim 27.2$ corresponds to an absolute magnitude $M_{r'} \sim -19.1$, the upper limit is fainter than 70% of the GRB host galaxies compared with large host galaxies samples searched systematically by some groups (see Figure 3. in Jakobsson et al. 2010; Pozanenko et al. 2008).

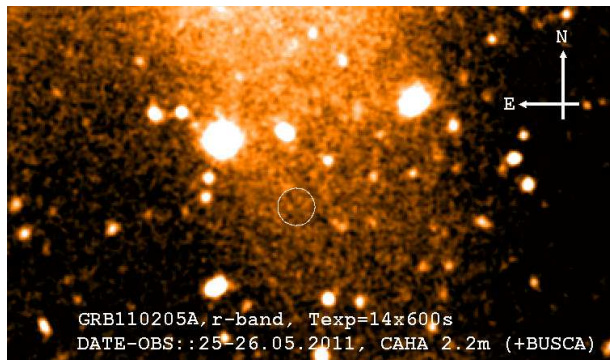


Fig. 8.— Host galaxy searching from 2.2m Calar Alto telescope taken in r' band. The center of the circle indicates the afterglow location. No clear source is detected down to $r' \sim 24.8$ within $5''$ of the afterglow location.

Table 4. SED fitting at different epoch

Model	time	E(B-V)	Γ_1	E_b (keV)	$\Gamma_2=\Gamma_1+0.5$	Norm	χ^2/dof
MW	Bknpawl						
	550 s	$0.11^{+0.02}_{-0.02}$	$1.36^{+0.033}_{-0.034}$	$0.41^{+0.074}_{-0.107}$	1.86	$0.23^{+0.039}_{-0.019}$	124.8/81=1.54
	1.13 ks	$0.19^{+0.009}_{-0.004}$	$2.10^{+0.021}_{-0.022}$	$4.94^{+4.93}_{-4.93}$	2.60	$0.038^{+4.39E-3}_{-4.0E-3}$	13.6/4=3.6
	5.9 ks	$0.16^{+0.02}_{-0.007}$	$1.59^{+0.0100}_{-0.027}$	$1.00E-03^{+1.5E-3}_{-1.0E-3}$	2.09	$0.086^{+4.34E-3}_{-0.022}$	20.2/23=0.88
	35 ks	$0.13^{+0.009}_{-0.008}$	$1.57^{+0.011}_{-0.012}$	$1.70E-03^{+3.66E-3}_{-1.57E-4}$	2.07	$4.03E-03^{+2.15E-4}_{-1.89E-3}$	38.9/22=1.77
MW	plaw						
	550 s	0.26	-	-	1.70	0.14	179.8/82= 2.19
	1.13 ks	$0.19^{+0.009}_{-0.009}$	-	-	$2.10^{+0.022}_{-0.022}$	$0.038^{+0.004}_{-0.004}$	13.6/5=2.72
	5.9 ks	$0.16^{+0.020}_{-0.019}$	-	-	$2.09^{+0.027}_{-0.027}$	0.027^{+1E-4}_{-1E-4}	20.2/24= 0.84
	35 ks	0.13	-	-	2.07	1.59E-04	55.6/23= 2.42
LMC	Bknpawl						
	550 s	$0.10^{+0.021}_{-0.017}$	$1.39^{+0.033}_{-0.033}$	$0.36^{+0.0951}_{-0.151}$	1.89	$0.25^{+0.076}_{-0.027}$	116.1/81= 1.43
	1.13 ks	$0.16^{+0.013}_{-0.004}$	$1.64^{+0.013}_{-0.030}$	$2.88^{+2.60E-3}_{-3.34E-3}$	2.14	$0.72^{+0.035}_{-0.027}$	8.5/4=2.13
	5.9 ks	$0.13^{+0.018}_{-0.019}$	$1.61^{+0.099}_{-0.049}$	$2.87E-03^{+7.01E-4}_{-9.33E-4}$	2.11	$0.051^{+0.007}_{-0.020}$	16.1/23= 0.70
	35 ks	$0.10^{+0.006}_{-0.007}$	$1.55^{+0.016}_{-0.014}$	$2.07E-03^{+5.14E-4}_{-3.48E-4}$	2.05	$3.70E-03^{+2.58E-4}_{-3.85E-4}$	26.4/22= 1.20
LMC	plaw						
	550 s	$0.24^{+0.023}_{-0.021}$	-	-	$1.75^{+0.033}_{-0.031}$	$0.141^{+3.93E-3}_{-3.85E-3}$	162.5/82= 1.98
	1.13 ks	$0.14^{+0.006}_{-0.006}$	-	-	$2.09^{+0.021}_{-0.021}$	$0.039^{+4.45E-3}_{-4.13E-3}$	13.9/5=2.78
	5.9 ks	$0.10^{+0.011}_{-0.011}$	-	-	$2.04^{+0.020}_{-0.020}$	$2.71E-03^{+0.001}_{-1.35E-4}$	19.4/24= 0.81
	35 ks	$0.07^{+0.006}_{-0.009}$	-	-	$2.01^{+0.015}_{-0.015}$	$1.65E-04^{+1.04E-05}_{-1.05E-05}$	39.0/23= 1.70
SMC	Bknpawl						
	550 s	$0.08^{+0.016}_{-0.014}$	$1.38^{+0.032}_{-0.032}$	$0.37^{+0.09}_{-0.14}$	1.88	$0.25^{+0.068}_{-0.026}$	114.3/81= 1.41
	1.13 ks	$0.11^{+0.005}_{-0.005}$	$2.06^{+0.020}_{-0.021}$	$5.05^{+4.93}_{-4.93}$	2.56	$0.039^{+4.56E-3}_{-2.24E-3}$	24.7/4=6.18
	5.9 ks	$0.09^{+0.005}_{-0.004}$	$1.56^{+0.024}_{-0.028}$	$2.74E-03^{+9.4E-4}_{-5.05E-4}$	2.06	$0.052^{+5.57E-3}_{-7.14E-3}$	17.3/23= 0.75
	35 ks	$0.08^{+0.005}_{-0.006}$	$1.54^{+0.016}_{-0.013}$	$2.43E-03^{+4.53E-4}_{-3.7E-4}$	2.04	$3.42E-03^{+2.78E-4}_{-2.75E-4}$	24.3/22= 1.1
SMC	plaw						
	550 s	0.19	-	-	1.75	0.136	189.5/82= 2.31
	1.13 ks	$0.11^{+0.005}_{-0.005}$	-	-	$2.06^{+0.021}_{-0.020}$	$0.039^{+4.40E-3}_{-4.12E-3}$	24.7/5=4.14
	5.9 ks	$0.07^{+0.007}_{-0.007}$	-	-	$2.01^{+0.017}_{-0.017}$	$2.68E-03^{+1.3E-4}_{-1.3E-4}$	22.5/24=0.94
	35 ks	$0.05^{+0.005}_{-0.006}$	-	-	$1.98^{+0.014}_{-0.013}$	$1.65E-04^{+1.03E-05}_{-1.04E-05}$	36.7/23=1.60

4. Theoretical Modeling

The high-quality broad band data of GRB 110205A allow us to model both prompt emission and afterglow within the framework of the standard fireball shock model, and derive a set of parameters that are often poorly constrained from other GRB observations. In the following, we discuss the prompt emission and afterglow modeling in turn.

4.1. Prompt emission modeling

4.1.1. General consideration

The mechanism of GRB prompt emission is poorly known. It depends on the unknown composition of the jet which affects the energy dissipation, particle acceleration and radiation mechanisms (Zhang 2011). In general, GRB emission can be due to synchrotron, SSC in the regions where kinetic or magnetic energies are dissipated, or Compton scattering of thermal photons from the photosphere. Within the framework of the synchrotron-dominated model (e.g. the internal shock model, Rees & Mészáros 1994; Daigne & Mochkovitch 1998, or the internal magnetic dissipation model, e.g. Zhang & Yan 2011), one can have a broken power law spectrum. Two cases may be considered according to the relative location of the cooling frequency ν_c and the synchrotron injection frequency ν_m : fast cooling ($\nu_c < \nu_m$) or slow cooling phase ($\nu_m < \nu_c$). The spectral indices are summarized in Table 5 (e.g. Sari et al. 1998).

For GRB 110205A, one may connect the two observed spectral breaks (E_0 and E_1) to ν_c and ν_m in the synchrotron model. Since the spectral index above E_1 is not well constrained from the data, we focus on the regime below E_1 . The expected spectral density (F_ν) power law index is -0.5 or $-(p-1)/2$, respectively, for the fast and slow cooling cases. The observed photon index $\beta \sim -1.5$ matches the fast cooling prediction closely. It is also consistent with slow cooling if the electron spectral index $p = 2$. For standard parameters, the prompt emission spectrum is expected to be in the fast cooling regime (Ghisellini et al. 2000). Slow cooling may be considered if downstream magnetic fields decay rapidly (Pe’er & Zhang 2006). The data are consistent with either possibility, with the fast cooling case favored by the close match between the predicted value and the data.

Table 5. Spectral indices from synchrotron spectrum prediction

fast cooling				
	$\nu < \nu_a$	$\nu_a < \nu < \nu_c$	$\nu_c < \nu < \nu_m$	$\nu_m < \nu$
	2	1/3	-1/2	-p/2
slow cooling				
	$\nu < \nu_a$	$\nu_a < \nu < \nu_m$	$\nu_m < \nu < \nu_c$	$\nu_c < \nu$
	2	1/3	-(p-1)/2	-p/2
Observed mean*		~0.6	~ -0.5	

*Note: spectral index = $\Gamma + 1$, i.e., α and β in *bandcut* model + 1.

Below E_0 (which corresponds to ν_c for fast cooling or ν_m for slow cooling), the synchrotron emission model predicts a spectral index of $1/3$. The observed mean value is ~ 0.60 , which is harder than the predicted value. Considering the large errors of the spectral indices, this is not inconsistent with the synchrotron model. Furthermore, if the magnetic fields are highly tangled with small coherence lengths, the emission may be in the “jitter” regime. The expected spectral index can then be in the range of 0 to 1, consistent with the data (Medvedev 2006).

Overall, we conclude that the observed prompt spectrum is roughly consistent with the synchrotron emission model in the fast cooling regime. This is the first time when a clear two-break spectrum is identified in the prompt GRB spectrum that is roughly consistent with the prediction of the standard GRB synchrotron emission model.

The detection of bright prompt optical emission in GRB 110205A provides new clues to GRB prompt emission physics. The optical flux density of GRB 110205A is ~ 20 times above the extrapolation from the best fit X/ γ -ray spectra. On the other hand, the optical light curve roughly traces that of γ -rays. This suggests that the optical emission is related to high energy emission, but is powered by a different radiation mechanism or originates from a different emission location. The case is similar to that of GRB 080319B (Racusin et al. 2008), but differs from that of GRB 990123 (Akerlof et al. 1999) where the optical light curve peaks after the main episodes of γ -ray emission and is likely powered by the reverse shock (Sari & Piran 1999; Mészáros & Rees 1999; Zhang et al. 2003; Corsi et al. 2005).

In the following, we discuss several possible interpretations of this behavior, i.e. the synchrotron + SSC model (Kumar & Panaitescu 2008; Racusin et al. 2008); the internal reverse + forward shock model (Yu, Wang & Dai 2009); the two zone models (Li & Waxman 2008; Fan et al. 2009); and the dissipative photosphere models (e.g. Pe’er et al. 2005, 2006; Giannios 2008; Lazzati et al. 2009, 2011; Lazzati & Begelman 2010; Toma et al. 2010; Beloborodov 2010; Vurm et al. 2011). We conclude that the synchrotron + SSC model and the photosphere model are disfavored by the data while the other two models are viable interpretations.

4.1.2. *Synchrotron + SSC*

Since the spectral shape of the SSC component is similar to the synchrotron component (Sari & Esin 2001), the observed two-break spectrum can be in principle due to SSC while the optical emission is due to synchrotron. This scenario is however disfavored since it demands an unreasonably high energy budget. The arguments are the following:

We take interval 2 as an example since its flux varies relatively slowly. Let $h\nu_{opt} \sim 10^{-2.3}$ keV and $h\nu_{\gamma,p} = E_0 \sim 10^{0.7}$ keV, the latter being the peak frequency of F_ν for the SSC component). Observations suggest that $F_{\nu_{\gamma,p}}/F_{\nu_{opt}} \sim 20$, (see Figure 4 and Table 1). Define $\nu_{p, syn}$ as the synchrotron F_ν peak frequency, and β_{opt} the spectral index around ν_{opt} ($F_\nu \propto \nu^{\beta_{opt}}$). Then the Compton parameter can be written as

$$Y = \nu_{\gamma,p} F_{\nu_{\gamma,p}} / (\nu_{p, syn} F_{\nu_{p, syn}}) \approx 10^{4.3} (\nu_{p, syn} / \nu_{opt})^{-1-\beta_{opt}}. \quad (5)$$

The inverse-Compton (IC) scattering optical depth is $\tau_e \sim F_{\nu_{\gamma,p}} / F_{\nu_{p, syn}} \sim Y \nu_{p, syn} / \nu_{\gamma,p} \sim 10^{1.3} (\nu_{p, syn} / \nu_{opt})^{-\beta_{opt}}$.

One constraint ought to be imposed for the SSC scenario, that is – the high energy spectrum of the synchrotron component at the lower bound of the X-ray band, i.e., $\nu_X = 0.3$ keV, must be below the observed flux density there. Since the spectral indices below and above $\nu_{\gamma,p}$ are consistent with $1/3$ and $-1/2$, respectively, and the synchrotron spectral slope above its peak resembles that of its SSC component, one can express this constraint in terms of $F_{\nu_{p, syn}} (\nu_X / \nu_{p, syn})^{-1/2} < F_{\nu_{\gamma,p}} (\nu_X / \nu_{\gamma,p})^{1/3}$. With numbers plugged in, this translates to a lower limit on the Compton parameter:

$$Y > 10^{2.5} (\nu_{p, syn} / \nu_{opt})^{-1/2}. \quad (6)$$

The inferred high Y (Eq. 5) and τ_e values would inevitably lead to an additional spectral component due to the 2nd-order IC scattering (Kobayashi et al. 2007; Piran et al. 2009). The 2nd IC F_ν spectrum peaks at $h\nu_{ic,2} \sim h\nu_{\gamma,p} Y / \tau_e \sim 10^{0.7} (\nu_{p, syn} / \nu_{opt})^{-1}$ MeV, with a flux density $\sim \tau_e F_{\nu_{\gamma,p}} \sim 10^{1.3} F_{\nu_{\gamma,p}} (\nu_{p, syn} / \nu_{opt})^{-\beta_{opt}}$. The nice fit of the *bandcut* model to the XRT-BAT-WAM spectrum rules out a 2nd IC peak below 1 MeV (see Figure 4), which poses a constraint $\nu_{p, syn} / \nu_{opt} < 5$.

We then get a constraint $Y \gtrsim 10^4$ and $\tau_e \gtrsim 10!$ This would lead to a serious energy crisis due to the 2nd IC scattering. For $\nu_{p, syn} / \nu_{opt} \ll 1$, the 2nd IC scattering might be in the Klein-Nishina regime and then be significantly suppressed, but the synchrotron peak flux density would be self-absorbed causing the seed flux insufficient for the 1st IC scattering (Piran et al. 2009). In conclusion, the SSC scenario is ruled out due to the high Y value inferred.

4.1.3. Internal reverse-forward shocks

Next we consider the internal shock model by calculating synchrotron emission from the reverse shock (RS) and forward shock (FS) due to the collision of two discrete cold shells

(e.g., Rees & Mészáros 1994; Daigne & Mochkovitch 1998; Yu et al. 2009). If the two shells have high density contrast, the synchrotron frequencies would peak around the γ -ray (reverse) and optical (forward) bands, respectively.

We first derive the frequency and flux ratio between the two shocks (Kumar & McMahon 2008). We define shell “1” as the fast moving, trailing shell, and shell “2” as the slower, leading shell. We use subscript ‘s’ to represent the shocked region. The pressure balance at the contact discontinuity gives (e.g., Shen, Kumar & Piran 2010)

$$(\Gamma_{1s}^2 - 1)n_1 = (\Gamma_{2s}^2 - 1)n_2, \quad (7)$$

where Γ_{1s} and Γ_{2s} are the Lorentz factors (LFs) of the unshocked shells, respectively, measured in the shocked region rest frame, and n_1, n_2 are the unshocked shell densities measured in their own rest frames, respectively. This equation is exact and is valid for both relativistic and sub-relativistic shocks. Using Lorentz transformation of LFs, the above equation can give the shocked region LF Γ_s for given n_1/n_2 , Γ_1 , and Γ_2 .

We assume that ϵ_e , ϵ_B and p are the same for both RS and FS. In the shocked region, the magnetic field energy density is $U'_B = B'^2/8\pi = 4\bar{\Gamma}(\bar{\Gamma} - 1)\epsilon_B n$, where $\bar{\Gamma}$ is the relative LF between the downstream and upstream of the shock, which corresponds to Γ_{1s} and Γ_{2s} for RS and FS, respectively. Since the internal energy density is the same in the RS and FS regions (due to pressure balance at contact discontinuity), it is obvious that the two shocked regions have the same B' , independent of the strengths of the two shocks. The injection energy and the cooling energy of the electrons are $\gamma_m \propto (\bar{\Gamma} - 1)$ and $\gamma_c \propto 1/(U'_B t')$, respectively. Since synchrotron frequency $\nu \propto \Gamma_s B' \gamma^2$, one finds the frequency ratios to be

$$\frac{\nu_{m,1}}{\nu_{m,2}} = \frac{(\Gamma_{1s} - 1)^2}{(\Gamma_{2s} - 1)^2}, \quad (8)$$

$$\frac{\nu_{c,1}}{\nu_{c,2}} = 1. \quad (9)$$

Thus, the injection frequency ratio can be determined for given Γ_1 , Γ_2 and shell density ratio n_1/n_2 . We numerically calculate $\nu_{m,1}/\nu_{m,2}$ as a function of n_1/n_2 and plot it in Fig. 9, and find that for different shell LF ratios $\nu_{m,1}/\nu_{m,2}$ lies between $(n_1/n_2)^{-1}$ and $(n_1/n_2)^{-2}$.

The maximum flux density is $F_{\nu,\max} \propto \Gamma_s N_e B'$, where N_e is the total number of the shocked electrons. So one has $F_{\nu,\max,1}/F_{\nu,\max,2} = m_1/m_2$, where m is the shock swept-up mass. We calculate the mass ratio in the rest frame of the shocked region. In this frame the density of the shocked fluid is $4\bar{\Gamma}n$; the rate of mass sweeping is proportional to the sum of the shock front speed and the unshocked fluid speed. We then get

$$\frac{m_1}{m_2} = \frac{\Gamma_{1s} n_1 (\beta_{rs,s} + \beta_{1s})}{\Gamma_{2s} n_2 (\beta_{sf,s} + \beta_{2s})}, \quad (10)$$

where the speeds β 's are all defined positive and are measured in the shocked fluid rest frame; the subscript ‘ rs ’ and ‘ fs ’ refer to the RS and FS front, respectively. From the shock jump conditions (e.g., Blandford & McKee 1976), one gets

$$\beta_{rs,s} = \frac{(\hat{\gamma} - 1)\beta_{1s}}{1 + 1/\Gamma_{1s}}, \quad (11)$$

where $\hat{\gamma}$ is the adiabatic index for a relativistic fluid. Using an empirical relation $\hat{\gamma} = (4\bar{\Gamma} + 1)/(3\bar{\Gamma})$ to smoothly connect the sub-relativistic shock regime to the relativistic shock regime, we obtain $(\beta_{rs,s} + \beta_{1s}) = 4\beta_{1s}/3$. Similar result applies to the FS front. Thus, Eq. (10) becomes

$$\frac{F_{\nu,\max,1}}{F_{\nu,\max,2}} = \frac{m_1}{m_2} = \frac{\Gamma_{1s}\beta_{1s}n_1}{\Gamma_{2s}\beta_{2s}n_2} = \left(\frac{n_1}{n_2}\right)^{1/2}, \quad (12)$$

where we have used Eq. (7). This result is also numerically plotted in Figure 9.

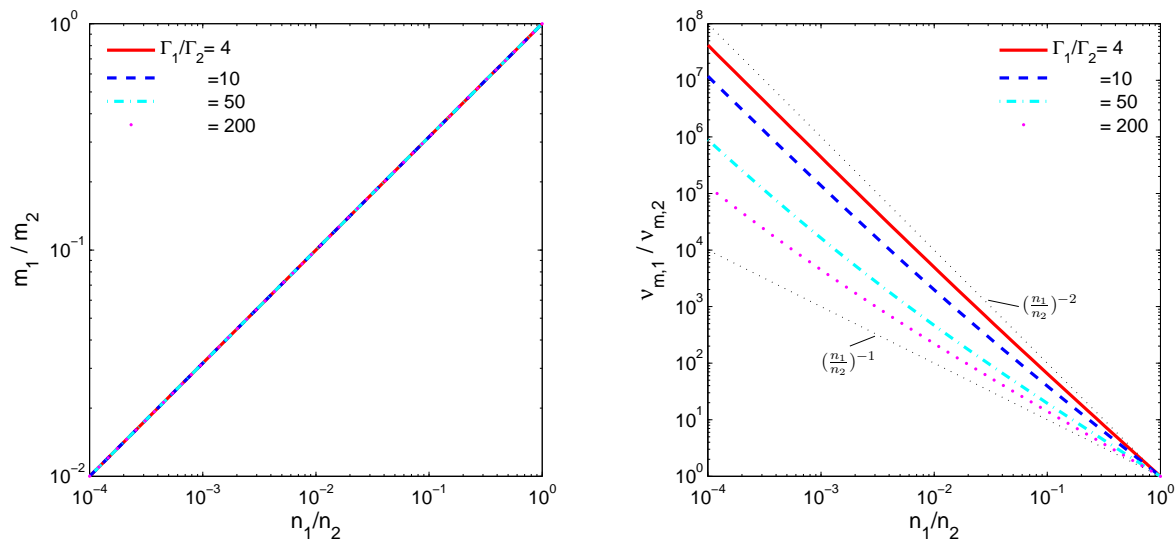


Fig. 9.— The ratios of the shock swept-up masses and synchrotron injection frequencies between the pair of shocks due to collision of two cold relativistic shells. The results are valid for both sub-relativistic and relativistic shocks, and are insensitive to Γ_2 as long as $\Gamma_2 \gg 1$. Note that these results can be extrapolated to the region of $n_1 > n_2$, and each result is symmetric about the (1, 1) point.

According to Figure 9, in the internal RS-FS model, the optical emission shell must have a higher pre-shock density and a larger shock swept-up mass, hence should have a higher $F_{\nu,\max}$. The analysis of GRB 110205A prompt X/ γ -ray spectrum suggests that the characteristic synchrotron frequencies are $h\nu_{c,\gamma} \sim 5$ keV and $h\nu_{m,\gamma} \sim 300$ keV (see §3.1);

then we have $F_{\nu_{\max,\gamma}}/F_{\nu_{opt}} \sim 20$, and $\nu_{m,\gamma}/\nu_{opt} \sim 6 \times 10^4$. Therefore, if the internal RS-FS model would work for this burst, the maximum flux density of the optical producing shell $F_{\nu_{\max}}$ must be $\gg F_{\nu_{opt}}$; since the cooling frequencies of the two shells are equal (Eq. 9), the optical shell must be in the slow cooling ($\nu_m < \nu_c$) regime.

In order to have the observed $F_{\nu_{opt}}$ much smaller than the optical shell $F_{\nu_{\max}}$, either ν_{opt} has to be far below or far above ν_m , or the self-absorption frequency has to be $\nu_a > \nu_{opt}$, or both. In the following, we use the observed $F_{\nu_{\max,\gamma}}/F_{\nu_{opt}}$ and $\nu_{m,\gamma}/\nu_{opt}$ as constraints and ν_a/ν_{opt} (for the optical shell) as a free parameter, and derive the permitted relation between $\nu_{m,\gamma}/\nu_{m,opt}$ and n_γ/n_{opt} , where n_γ/n_{opt} is the density ratio of the γ -ray shell over the optical shell and is given by the maximum flux density ratio of the two shells (Eq. 12). We then overlay the permitted relations onto the internal RS-FS model predictions shown in Fig. 9 right panel, in order to find the permitted model parameter values, i.e., shell LF ratio $\Gamma_{fast}/\Gamma_{slow}$, shell density ratio n_γ/n_{opt} and ν_a/ν_{opt} .

For the optical shell, the relation between $F_{\nu_{opt}}$ and $F_{\nu_{\max}}$ is determined according to the standard broken power law synchrotron spectrum (e.g. Sari et al. 1998; Granot & Sari 2002), depending on the free parameter ν_a/ν_{opt} which varies from < 1 to > 1 . In addition, we impose an additional constraint that the high energy spectrum of the optical producing shell emission should not exceed the observed flux density at the lower bound of the X-ray band, i.e., at $\nu_X = 0.3$ keV, so that the spectral slope there would not be inconsistent with the observed one. The final results are shown in Figure 10.

From Figure 10, we conclude that the prompt SED data of GRB 110205A can be reproduced by the internal RS-FS synchrotron model under the following conditions: $\nu_{m,\gamma}/\nu_{m,opt} \approx 10^6 - 10^7$, $n_\gamma/n_{opt} \approx 10^{-4} - 10^{-3}$, and $\nu_a/\nu_{opt} \approx 2 - 6$ for the optical shell; and the LF ratio between the two shells falls into a wide range $\sim 4 - 100$. In Figure 10, the electron index $p = 3$ has been adopted. A smaller p value only increases the inferred $\nu_{m,\gamma}/\nu_{m,opt}$ and decreases n_γ/n_{opt} both by a factor < 10 , without affecting the conclusion.

4.1.4. Emission radius

The distance of the GRB emission region from the central engine (R_{GRB}) has been poorly constrained. If prompt optical data are observed, one may apply the constraint on the synchrotron self-absorption frequency (ν_a) to constrain R_{GRB} (Shen & Zhang 2009). One needs to assume that the optical and γ -ray emission are from essentially the same radius in order to pose such a constraint. This is the simplest scenario, and is valid for some scenarios we have discussed, e.g. the internal RS-FS model as discussed in section 4.1.3. In

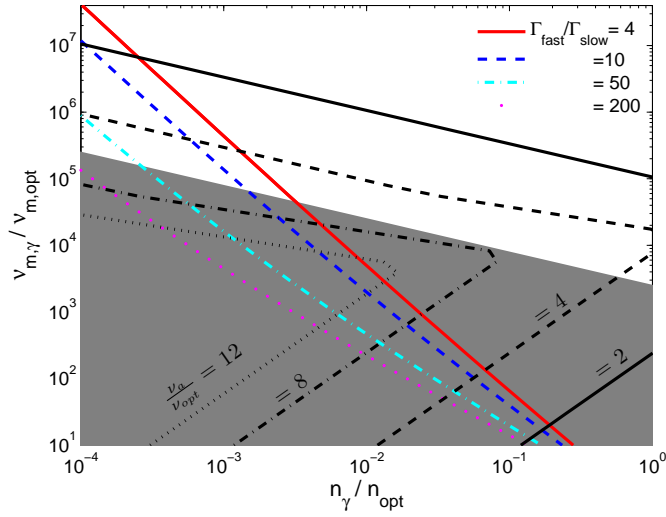


Fig. 10.— The GRB 110205A-permitted $\nu_{m,\gamma}/\nu_{m,opt}$ versus n_γ/n_{opt} relations for varying ν_a/ν_{opt} values (*black* lines), superimposed on the internal RS-FS model predictions (*colored* lines, from the right panel of Fig. 9). The locations where the data-permitted and the model predicted relations intersect correspond to the specific model parameter values with which the model could work for GRB 110205A. Electron index $p = 3$ is assumed. The shaded region is forbidden because there the flux density at $\nu_X = 0.3$ keV in the emission spectrum of the optical producing shell will exceed the observed value of $F_{\nu,X}$, causing the spectral slope inconsistent with the observed one. Note that for $\nu_a < \nu_{opt}$ the data-permitted $\nu_{m,\gamma}/\nu_{m,opt}$ versus n_γ/n_{opt} relations have no intersection with the internal RS-FS predictions unless n_γ/n_{opt} is unreasonably small.

the following, we derive the emission radius based on the one-zone assumption, bearing in mind that optical and gamma-ray emissions can come from different zones.

For GRB 110205A, the synchrotron optical emission from the optically producing shell is self-absorbed and has the following frequency ordering: $\nu_m < \nu_{opt} < \nu_a < \nu_c$ (§4.1.3). For such a frequency ordering, ν_a is determined by (Shen & Zhang 2009)

$$2\gamma_a m_e \nu_a^2 = F_{\nu_a} \left(\frac{D_L}{R} \right)^2 \frac{(1+z)^3}{\Gamma}, \quad (13)$$

where D_L is the luminosity distance, F_{ν_a} is the observed flux density at ν_a , and $\gamma_a = [16m_e c(1+z)\nu_a/(3eB'\Gamma_s)]^{1/2}$ is the LF of electrons whose synchrotron frequency is ν_a . Expressing F_{ν_a} in terms of the self-absorbed optical flux density: $F_{\nu_a} = F_{\nu_{opt}}(\nu_a/\nu_{opt})^{5/2}$, we find ν_a is canceled out in the above equation:

$$2m_e \left(\frac{16m_e c}{3eB'} \right)^{1/2} \left(\frac{R}{D_L} \right)^2 \frac{(1+z)^{7/2}}{\Gamma_s^{3/2}} = F_{\nu_{opt}} \nu_{opt}^{-5/2}. \quad (14)$$

For an observed average $F_{\nu_{opt}} \approx 10^{1.8} \mu\text{Jy}$, $h\nu_{opt} \approx 10^{-2.3}$ keV and other numbers for GRB 110205A, we obtain

$$R_{\text{GRB}} \approx 2.8 \times 10^{13} \left(\frac{\Gamma_s}{250} \right)^{3/4} \left(\frac{B'}{10^5 \text{ G}} \right)^{1/4} \text{ cm}, \quad (15)$$

We have normalized Γ_s to 250, and B' to 10^5 G. The former normalization can be justified from the afterglow data (§4.2.1). The value of B' is loosely determined, and may be estimated $B' \sim 10^6 \zeta L_{52} R_{13} \Gamma_2$ G, where $\zeta \leq 1$ is a constant parameter (Zhang & Mészáros 2002). This gives $B' \sim 10^5$ G for the parameters of GRB 110205A. Interpreting E_1 as ν_m would also give rise to $B' \sim 10^5$ G if $\Gamma_{1s} \sim 3$ and $\epsilon_e \sim 0.1$. We note that R_{GRB} is a weak function of B' , so that an estimate $R_{\text{GRB}} \approx 3 \times 10^{13}$ cm is robust. This radius is consistent with the expectation of the internal shock model (e.g. Piran 2005).

Note that in the Shen & Zhang (2009) method one has to assume both the optical and γ -rays belong to the same continuum component and partly rely on the γ -ray low-energy spectral slope to constrain the ν_a location. However, this assumption is discarded in the case of GRB 110205A: it is inferred that in the internal RS-FS model the optical shell has $\nu_{opt} < \nu_a$ (§4.1.3), for which R_{GRB} is worked out without the aid of the γ -ray spectral information.

4.1.5. Two-zone models

The GRB 110205A prompt observations might be also interpreted if the optical emission region is decoupled from the γ -ray/X-ray emission regions. There are models which envisage

that the γ -rays are produced in internal shocks at small radii between shells with large LF contrasts, while the optical emission is generated in internal shocks at larger radii by shells with lower magnetic fields and smaller LF contrasts. This can happen in two scenarios. According to Li & Waxman (2008), even after collisions and mergers of shells with large LF contrasts, the outflow still comprises discrete shells with variations, though with reduced relative LFs, which could lead to the “residual” collisions at larger radii. Fan et al. (2009) considered a neutron-rich GRB outflow, in which free neutrons are decoupled from the proton shells until decaying at large radii. Violent collisions among the proton shells occur at smaller radii, while some later-ejected, slower, proton shells catch up with the decayed neutron shells at large radii and give weaker collisions. Both scenarios might work for GRB 110205A, since in either case, the large-radii collisions would bear a similar temporal information as the small-radii collisions, rendering a coarse optical- γ -ray correlation. A defining property of these two-zone scenarios is that the optical pulses should display a larger variability time scale δt than the γ -ray pulses, and they should lag behind the γ -ray pulses by $\sim R_{opt}/2\Gamma^2c \sim 0.2 \text{ s}R_{opt,15}\Gamma_{2.5}^{-2}$ s. These predictions could be tested by future, high temporal-resolution, prompt optical observations of similar bursts.

4.1.6. *Dissipative photosphere emission model*

Recently, several independent groups (e.g., Giannios 2008; Toma et al. 2010; Beloborodov 2010; Lazzati & Begelman 2010; Vurm et al. 2011) have developed an improved version of the photosphere emission model of GRB prompt emission. This model invokes energy dissipation in the Thomson-thin layer of the photosphere, so that the photosphere spectrum deviates from the thermal form through IC upscattering. The same electrons also emit synchrotron photons, which may account for the optical excess. A difficulty of this scenario is that the low energy spectral index below E_p is too hard (e.g. $\alpha = +0.4$, Beloborodov 2010) to account for the observations ($\alpha = -1.5$). The data of GRB 110205A (double breaks and spectral slopes) of the X/ γ -ray component do not comply with the predictions of this model, but is rather consistent with the the standard synchrotron model (see section 4.1.1). We conclude that the dissipative photosphere model does not apply at least to this burst.

4.2. Afterglow modeling

4.2.1. Initial Lorentz factor

For both scenarios I and II, the optical peak time $t_p = 1045 \pm 63$ s corresponds to the deceleration time. Since this time is much longer than T_{90} (~ 257 s), it is pertinent to consider a “thin” shell regime (Sari & Piran 1995). The peak time can be then used to estimate the initial Lorentz factor of the ejecta (e.g. Meszaros 2006; Molinari et al. 2007): $\Gamma_0 \sim 560(E_{\gamma,iso,52}/\eta_{0.2}n_0t_{p,z,1}^3)^{1/8}$, where $E_{\gamma,iso,52}$ is the isotropic equivalent energy in units of 10^{52} erg s^{-1} ; $\eta_{0.2}$ is the radiative efficiency in units of 0.2; n_0 is local density in units of cm^{-3} and $t_{p,z,1}$ is the peak time corrected for cosmological time dilation in units of 10 s. For GRB 110205A, with redshift $z = 2.22$ and fluence of $2.7_{-0.4}^{+0.7} \times 10^{-5}$ erg cm^{-2} (15 - 3000 keV, Sakamoto et al. 2011c), we derive the rest-frame 1 keV - 10 MeV isotropic energy $E_{\gamma,iso} = 46_{-7}^{+4} \times 10^{52}$ erg. With $t_{p,z,1} = 32.4 \pm 1.8$, we finally estimate

$$\Gamma_0 = 245_{-10}^{+7}(\eta_{0.2}n_0)^{-1/8}. \quad (16)$$

This value follows the empirical relation $\Gamma_0 \sim 182E_{\gamma,iso,52}^{0.25 \pm 0.03}$ recently found by Liang et al. (2010) within 2- σ range.

4.2.2. Light curves

Scenario I :

In this scenario, the optical bump around t_p is mostly contributed by the FS. Fitting the light curves, one can constrain the temporal slopes of the RS component. In the R -band, the temporal indices are $\alpha_{r1} = 3.32 \pm 1.2$ (rising phase) and $\alpha_{r2} = -5.90 \pm 1.0$ (decaying phase), while in the X-ray band, they are $\alpha_{r1} = 5.19 \pm 1.3$ (rising) and $\alpha_{r2} = -8.26 \pm 1.3$ (decaying). The steep rising slope (~ 4) is consistent with the expectation in the thin shell ISM RS model (e.g. Kobayashi 2000, Zhang et al. 2003). The decaying slopes look too steep as compared with the theoretically expected values (e.g. $\sim -2 - \beta$ for the so-called “curvature” effect, Kumar & Panaitescu 2000). However, strictly speaking, the expected decay index is valid when the time zero point is placed to t_p . The results are therefore not inconsistent with the theoretical expectations. Compared with other GRBs with the RS emission identified (which typically peaks around or shortly after the T_{90} duration), a RS emission peaking at ~ 1100 s after the burst is rare and has not been seen before (though previously, the optical brightening in the ultra-long GRB 091024 was claimed by Gruber et al. 2011 to be caused by the rising RS, but its data coverage is very sparse and the RS origin was not exclusively determined, e.g., it could also be due to the FS peak in a wind medium).

For the FS component, the rising index is set to +3 during the fitting for both the optical and X-ray bands. The decay index after the peak is fitted to $\alpha_{of2} = -1.50 \pm 0.04$ in the optical band, and $\alpha_{xf2} = -1.54 \pm 0.1$ in the X-ray band. We also constructed two SEDs at the epochs 5.9 ks and 35 ks during the decay phase. We find that the only model that satisfies the closure relation (e.g. Sari et al. 1998; Granot & Sari 2002; Zhang & Mészáros 2004) is the ISM model in the $\nu_m < \nu_o < \nu_x < \nu_c$ spectral regime. For example, our SED at 5.9 ks gives a spectral slope $\beta \sim -1.01 \pm 0.02$ across the entire energy band. The optical temporal decay index $\alpha_o = -1.50 \pm 0.04$ matches the expected closure relation $\alpha = (3/2)\beta$ well. The X-ray decay slope $\alpha_{xf2} = -1.54 \pm 0.1$ within 1- σ error is consistent with the closure relation. The electron energy index, $p = -2\beta + 1 \sim 3.0$, is also consistent with its value derived from the temporal index index $p = (-4\alpha + 3)/3 = 3.0 \pm 0.08$ derived from α_o and $p = 3.05 \pm 0.14$ derived from α_x .

At late times around $\sim 10^5$ s, the decay index becomes steeper in both the optical and X-ray bands, which is probably caused by a jet break. The simultaneous fit suggests a $t_{jb} = 1.0 \pm 0.2 \times 10^5$ s from the two band light curves. The post-break temporal indices are consistent with a jet break without significant sideways expansion, which is predicted to be steeper by 3/4. But the conclusion is not conclusive due to large errors. The jet angle can be calculated using (Sari et al. 1999) $\theta = \frac{1}{6} \left(\frac{t_{jb}}{1+z} \right)^{3/8} \left(\frac{n\eta_{0.2}}{E_{\gamma, iso, 52}} \right)^{1/8}$. Taking $t_{jb} \simeq 1.0 \times 10^5$ s = 1.2 days, and $E_{\gamma, iso, 52} = 46.0$, we derive $\theta = (4.1_{-1.0}^{+3.5})^\circ$. With a beaming factor of $\frac{\theta^2}{2}$, the corresponding jet-angle-corrected energy is $E_\gamma = 1.2 \times 10^{51}$ erg.

Scenario II :

In this scenario, the early steep rise and bright peak is dominated by the RS component only. It can also be well explained by a ISM model in the thin shell regime. Within this scenario, the FS component shows up and peaks later. The FS peak is defined by ν_m crossing the optical band. There should also be a break time in the FS light curve at the RS peak t_p , which is caused by the onset of the afterglow. After the FS peak, the afterglow analysis is similar to Scenario I. We find the best afterglow model for this scenario is the ISM model assuming $\nu_m < \nu_c < \nu_o < \nu_x$. From the spectral index $\beta = -1.01$, one can derive $p = 2.02$. Since $\alpha \sim 1.0$ for both optical and X-ray, the closure relation $\alpha = (3\beta+1)/2$ is well satisfied.

The X-ray bump around 1000 s is also consistent with being the the emission from the RS. Our SED fit (see Table 4) near the peak at 1.13 ks shows that the best fits are a single power-law (LMC and SMC model), or a broken power-law model (LMC model) with the break energy ~ 2.9 keV. The result suggests that the optical and X-ray bands belong to a same emission component with $\nu_m < \nu_{opt} < \nu_X < \nu_c$ (for single power law) or $\nu_m < \nu_{opt} < \nu_c < \nu_X$ (for broken power law). In the case of a thin ejecta shell and ISM, the synchrotron cooling frequency at the time when the RS crosses the ejecta, t_p , can be

estimated to be $\nu_c(t_p) = 2 \times 10^{26} \Gamma^{-4} (\epsilon_B n)^{-3/2} (1+z) t_p^{-2}$ Hz (also see Kobayashi 2000). Adopting $\Gamma \sim 250$, $z = 2.22$, $t_p = 1.1$ ks that are relevant for GRB 110205A, this would require $\epsilon_B n \sim 10^{-5} \text{ cm}^{-3}$. Such a value, although in the low end of the generally anticipated parameter distribution range, is not impossible.

The jet break time derived from this scenario is somewhat earlier than Scenario I, which is $\sim 5.44 \pm 0.2 \times 10^4$ s from the simultaneous fitting. Adopting this break time we derived the jet angle for this scenario is $\theta = (3.2_{-0.9}^{+2.6})^\circ$, which corresponds to a jet-angle-corrected energy of $E_\gamma = 7.2 \times 10^{50}$ erg.

4.2.3. RS magnetization

The composition of the GRB ejecta is still not well constrained. Zhang et al. (2003) suggested that bright optical flashes generally require that the RS is more magnetized than the FS, namely, the ejecta should carry a magnetic field flux along with the matter flux (see also Fan et al. 2002, Panaitescu & Kumar 2004 for case studies). Since GRB 110205A has a bright RS component, it is interesting to constrain the RS parameters to see whether it is also magnetized. For both scenarios I and II, since the peak time and maximum flux of both FS and RS can be determined (also shown in Table 2), one can work out the constraints on the RS magnetization following the method delineated in Zhang et al. (2003). The same notations are adopted here as in Zhang et al. (2003).

For Scenario I, the FS peaks at t_\times where $\nu_{m,f} < \nu_R < \nu_{c,f}$, and then decays as $F_{\nu,f} \propto t^{-3(p_f-1)/4}$. For Scenario II, In the FS, one has $\nu_R \leq \nu_{m,f} < \nu_{c,f}$ at t_\times . The FS light curve still rises as $t^{1/2}$, until reaching $t_{p,f}$ where $\nu_R = \nu_{m,f} < \nu_{c,f}$. We define $(t_{p,r}, F_{\nu,p,r})$ and $(t_{p,f}, F_{\nu,p,f})$ as the peak times and peak flux densities in optical for RS and FS, respectively. Similar to those presented in Zhang et al. (2003), it follows naturally from the above that

$$\mathfrak{R}_t \equiv \frac{t_{p,f}}{t_{p,r}} = \begin{cases} 1, & \text{for scenario I} \\ \Gamma_\times^{4/3} \mathfrak{R}_B^{-2/3} \mathfrak{R}_\nu^{-2/3}, & \text{for scenario II} \end{cases} \quad (17)$$

$$\mathfrak{R}_F \equiv \frac{F_{\nu,p,r}}{F_{\nu,p,f}} = \begin{cases} \Gamma_\times^{2-p_f} \mathfrak{R}_B^{\frac{p_f+1}{2}} \mathfrak{R}_\nu^{\frac{p_f-p_r}{2}}, & \text{for scenario I} \\ \Gamma_\times \mathfrak{R}_B \mathfrak{R}_\nu^{-\frac{p_r-1}{2}}, & \text{for scenario II} \end{cases} \quad (18)$$

Note that Scenario I is actually a special case of $\mathfrak{R}_t = 1$ of the more general Scenario II. The results are identical to those in Zhang et al. (2003) except that we do not use the RS decay slope $\alpha_{r,2}$ after t_\times as one of the parameters. This was to avoid the ambiguity of the blastwave dynamics after the shock crossing. Instead we keep p_r in the formulae, and determine p_r from the better understood RS rising slope before t_\times : $\alpha_{r,1} = (6p_r - 3)/2$.

For Scenario I, one can derive $\mathfrak{R}_t \sim 1$, $p_r \approx 2$, $p_f \approx 3$ and $\mathfrak{R}_F \approx 0.5$. Notice that the entire optical peak around t_\times is contributed mainly from the FS, which means p_r is poorly constrained. So we take $p_r = p_f \approx 3$. Then from Eq. (18) we get

$$\mathfrak{R}_B \sim 7 \Gamma_{\times,2}^{1/2} \sim 7.7. \quad (19)$$

For Scenario II, $\mathfrak{R}_t \approx 3.6$, $\mathfrak{R}_F \approx 16.5$ and $p_r \approx 2.3$. Plugging in numbers and from Eq. (17) we have $\mathfrak{R}_B \mathfrak{R}_\nu \sim \Gamma_\times^2 / 6.8$. Combining it with Eq. (18) and canceling out \mathfrak{R}_ν , we get

$$\mathfrak{R}_B \sim 7 \Gamma_{\times,2}^{0.18} \sim 7.2. \quad (20)$$

The numerical values are obtained by taking $\Gamma_\times = \Gamma_0 / 2 \sim 120$.

In both scenarios, the magnetic field strength ratio $\mathfrak{R}_B \equiv B_r / B_f$ is ~ 7 . This suggests that the RS is more magnetized than the FS. Since the magnetic field in the FS is believed to be induced by plasma instabilities (Weibel 1959; Medvedev & Loeb 1999; Nishikawa et al. 2009), a stronger magnetic field in the RS region must have a primordial origin, i.e. from a magnetized central engine.

4.2.4. Discussion

Comparing with the other recent work on GRB 110205A (Cucchiara et al. 2011, Gao 2011 and Gendre et al. 2011), our scenario II analysis, which concludes the bright optical peak around 1000 s is dominated by the RS emission, agrees with that by Gendre et al. (2011) and Gao (2011). Our scenario I analysis, though close to the conclusion by Cucchiara that it is dominated the FS emission, has slight difference, as we also consider the RS contribution in our scenario I.

Both scenarios in our analysis can interpret the general properties of the broadband afterglow. However, each scenario has some caveats. For Scenario I, as explained above, the best fit model light curve is not steep enough to account for the data in the UVOT-*u* band ($\alpha \sim 5$ for *R* and $\alpha \sim 6$ for UVOT-*u* if apply a single broken-power-law fitting). Since the inconsistency only occurs in the bluest band with adequate data to constrain the rising slope, we speculate that the steeper rising slope may be caused by a decreasing extinction with time near the GRB. No clear evidence of the changing extinction has been observed in other GRBs. In any case, theoretical models have suggested that dust can be destructed by strong GRB X-ray and UV flashes along the line of sight, so that a time-variable extinction is not impossible (e.g. Waxman & Draine 2000; Fruchter et al. 2001; Lazzati et al. 2002a; De Pasquale et al. 2003). For Scenario II, the model cannot well fit the X-ray peak around

1100 s. The main reason is that the required RS component to fit the optical light curve is not as narrow as that invoked in Scenario I. It is possible that X-ray feature is simply an X-ray flare due to late central engine activities, which have been observed in many GRBs (e.g. Burrows et al. 2005b; Liang et al. 2006; Chincarini et al. 2007).

In the late optical light curve around 5×10^4 s, there is a re-brightening bump observed by LOT in four bands. Such bumps have been seen in many GRBs (e.g. GRB 970508, Galama et al. 1998; GRB 021004, Lazzati et al. 2002b; GRB 050820, Cenko et al. 2006; GRB 071025, Utdike et al. 2008; GRB 100219A, Mao et al. 2011), which are likely caused by the medium density bumps (e.g. Lazzati et al. 2002b; Dai & Wu 2003; Nakar & Granot 2007; Kong et al. 2010). Microlensing is another possibility (e.g. Garnavich et al. 2000; Gaudi et al. 2001; Baltz & Hui 2005), although the event rate is expected to be rather low.

Interestingly, linear polarization at a level of $P \sim 1.4\%$ was measured by the 2.2 m telescope at Calar Alto Observatory (Gorosabel et al. 2011) 2.73-4.33 hours after the burst. During this time, the afterglow is totally dominated by the FS in Scenario I, or mostly dominated by the FS (with a small contamination from the RS) in Scenario II. The measured linear polarization degree is similar to several other detections in the late afterglow phase (e.g. Covino et al. 1999, 2003; Greiner et al. 2003; Efimov et al. 2003), which is consistent with the theoretical expectation of synchrotron emission in external shocks (e.g. Gruzinov & Waxman 1999; Sari 1999; Ghisellini & Lazzati 1999).

5. Summary

We have presented a detailed analysis of the bright GRB 110205A, which was detected by both *Swift* and *Suzaku*. Thanks to its long duration, *Swift* XRT, UVOT, ROTSE-IIIb and BOOTES telescopes were able to observe when the burst was still in the prompt emission phase. Broad-band simultaneous observations are available for nearly 200 s, which makes it one of the exceptional opportunities to study the spectral energy distribution during the prompt phase. The broad-band time-resolved spectra are well studied. For the first time, an interesting two-break energy spectrum is identified throughout the observed energy range, which is roughly consistent with the synchrotron emission spectrum predicted by the standard GRB internal shock model. Shortly after the prompt emission phase, the optical light curve shows a bump feature around 1100 s with an unusual steep rise ($\alpha \sim 5.5$) and a bright peak ($R \sim 14.0$ mag). The X-ray band shows a bump feature around the same time. This is followed by a more normal decay behavior in both optical and X-ray bands. At late times, a further steepening break is visible in both bands.

The rich data in both the prompt emission and afterglow phase make GRB 110205A an ideal burst to study GRB physics, to allow the study of the emission mechanisms of GRB prompt emission and afterglow, and to constrain a set of parameters that are usually difficult to derive from the data. It turns out that the burst can be well interpreted within the standard fireball shock model, making it a “textbook” GRB. We summarize our conclusions as follows.

1. The two-break energy spectrum is highly consistent with the synchrotron emission model in the fast cooling regime. This is consistent with the internal shock model or the magnetic dissipation model that invokes first-order Fermi acceleration of electrons.

2. The prompt optical emission is ~ 20 times greater than the extrapolation from the X/ γ -ray spectrum. Our analysis rules out the synchrotron + SSC model to interpret the optical + X/ γ -ray emission. We find that the prompt emission can be explained by a pair of reverse/forward shocks naturally arising from the conventional internal shock model. In a two-shell collision, the synchrotron emission from the slower shock that enters the denser shell produces optical emission and is self-absorbed while that from the faster shock entering the less dense shell produces the X/ γ -ray emission. The required density ratio of two shells is $\sim 10^{-4} - 10^{-3}$.

3. If the optical and gamma-ray emissions originate from a same radius, as is expected in the internal forward/reverse shock model, one can pinpoint the prompt emission radius to $R \sim 3 \times 10^{13}$ cm by requiring that the synchrotron optical photons are self-absorbed.

4. The data can be also interpreted within a two-zone model where X/ γ -rays are from a near zone, while the optical emission is from a far zone. The dissipative photosphere model is inconsistent with the prompt emission data.

5. The broad band afterglow can be interpreted within the standard RS + FS model. Two scenarios are possible: Scenario I invokes both FS and RS to peak at 1100 s, while Scenario II invokes RS only to peak at 1100 s, with the FS peak later when ν_m cross the optical band. In any case, this is the first time when a rising reverse shock – *before* its passage of the GRB ejecta (not after, when the reverse shock emission is fast decaying, like in GRB 990123 and a few other cases) – was observed in great detail.

6. In either scenario, the optical peak time can be used to estimate the initial Lorentz factor of GRB ejecta, which is found to be $\Gamma_0 \approx 250$.

7. From the RS/FS modeling, we infer that the magnetic field strength ratio in reverse and forward shocks is $\mathfrak{R}_B \equiv B_r/B_f \sim 7$. This suggests that the GRB ejecta carries a magnetic flux from the central engine.

8. Jet break modeling reveals that the GRB ejecta is collimated, with an opening angle $\sim 4.1^\circ$ (Scenario I) or $\sim 3.2^\circ$ (Scenario II). The jet-corrected γ -ray energy is $E_\gamma \sim 1.2 \times 10^{51}$ erg or $E_\gamma \sim 7.2 \times 10^{50}$ erg.

We thank the anonymous referee for helpful comments and suggestions to improve the manuscript. This research is supported by the NASA grant NNX08AV63G and the NSF grant PHY-0801007. RFS is supported by an NSERC Discovery grant. APB, AAB, NPK, MJP and SRO acknowledges the support from the UK Space Agency. BZ acknowledges NASA NNX10AD48G and NSF AST-0908362 for support. MI acknowledges support from the CRI grant 2009-0063616, funded by MEST of the Korean government. The Centre for All-sky Astrophysics is an Australian Research Council Centre of Excellence, funded by grant CE11E0090. This research made use of public data supplied by the High Energy Astrophysics Science Archive Research Center (HEASARC) at the NASA Goddard Space Flight Center. This work has been supported by Spanish Junta de Andalucía through program FQM-02192 and from the Spanish Ministry of Science and Innovation through Projects (including FEDER funds) AYA 2009-14000-C03-01 and AYA2008-03467/ESP. We thank for support provided by INTA and EELM-CSIC for hosting the BOOTES observatories. The work based partly on data acquired at the Centro Astronómico Hispano Alemán (CAHA) de Calar Alto and Observatorio de Sierra Nevada (OSN). This research was also supported by the UK STFC.

REFERENCES

- Abdo, A. A., et al., 2009, *Nature*, 462, 331
- Akerlof, C. W., et al., 1999, *Nature*, 398, 400
- Akerlof, C. W. & Swan, H. F., 2007, *ApJ*, 671, 1868
- Andreev, M., Sergeev, A., Pozanenko, A., 2011, *GCN Circ.*, 11641
- Atwood, W. B., et al., 2009, *ApJ*, 697, 1071
- Band, D., et al. 1993, *ApJ*, 413, 281
- Baltz, E. A. & Hui, L., 2005, *ApJ*, 618, 403
- Barthelmy, S., et al. 2005, *Space Sci. Rev.*, 120, 143
- Beardmore, A., et al. 2011, *GCN Circ.*, 11629

- Beloborodov, A. M., 2010, MNRAS, 407, 1033
- Blandford, R. D. & McKee, C. F., Physics of Fluids, 1976, 19, 1130
- Breeveld, A. A., et al., 2010, MNRAS, 406, 1687
- Breeveld, A. A., et al., 2011, AIP Conference Proceedings, 1358, 373
- Burrows, D. N., Hill, J. E., Nousek, J. A., et al. 2005a, Space Sci. Rev., 120, 165
- Burrows, D. N. et al. 2005b, Science, 309, 1833
- Cenko, S. B., et al., 2006, ApJ, 652, 490
- Cenko, S. B., Hora, J. & Bloom, S. 2011, GCN Circ., 11638
- Chester, M. M., & Beardmore, A. P. 2011, GCN Circ., 11634
- Chincarini, G. et al. 2007, ApJ, 671, 1903
- Cucchiara, A., et al. 2011, arXiv:1107.3352
- Corsi, A., et al., 2005, A&A, 438, 829
- Covino, S. et al. 1999, A&A, 348, L1
- Covino, S. et al. 2003, A&A, 400, L9
- Dai, Z. G. & Wu, X. F., 2003, ApJ, 591, L21
- Daigne, F. & Mochkovitch, R. 1998, MNRAS, 296, 275
- De Pasquale, M. et al., 2003, ApJ, 592, 1018
- De Pasquale, M. et al., 2010, ApJ, 709, 146
- Efimov, Y. et al., 2003, GCN Circ., 2144
- Evans, P. A., Beardmore, A. P., Page, K. L., et al. 2007, A&A, 469, 379
- Evans, P. A., Beardmore, A. P., Page, K. L., et al. 2009, MNRAS, 397, 1177
- Evans, P. A. et al., 2010, A&A, 519, 102
- Fan, Y.-Z., Dai, Z.-G., Huang, Y.-F., Lu, T. 2002, ChJAA, 2, 449
- Fan, Y. & Wei, D., 2005, MNRAS, 364, L42

- Fan, Y. Z., Zhang, B., Wei, D. M., 2009, *Physical Review D*, 79, 021301
- Fruchter, A., Krolik, J. H., & Rhoads, J. E., 2001, *ApJ*, 563, 597
- Galama, T. J., 1998, *ApJ*, 497, L13
- Gao, W., 2011, arXiv:1104.3382
- Garnavich, P. M., Loeb, A. & Stanek, K. Z., 2000, *ApJ*, 544, L11
- Gaudi, B. S., Granot, J. & Loeb, A., 2001, *ApJ*, 561, 178
- Gehrels, N., et al., 2004, *ApJ*, 611, 1005
- Gendre, B., et al., 2011, arXiv:1110.0734
- Giannios D., 2008, *A&A*, 480, 305
- Ghisellini, G., Celotti, A., Lazzati, D. 2000, *MNRAS*, 313, L1
- Ghisellini, G. & Lazzati, D. 1999, *ApJ*, 309, 7
- Golenetskii, S., et al., 2011, *GCN Circ.*, 11659
- Gorosabel, J., Duffard, R., Kubanek, P. & Guizarro, A., 2011, *GCN Circ.*, 11696
- Granot, J. & Sari, R., 2002, *ApJ*, 568, 820
- Greiner, J. et al. 2003, *Nature*, 426, 157
- Gruzinov, A., Waxman, E. 1999, *ApJ*, 511, 852
- Gruber, D., et al., 2011, *A&A*, 528, 15
- Hentunen, V. P., Nissinen, M., Salmi, T., 2011, *GCN Circ.*, 11637
- Im, M. & Urata., Y., 2011, *GCN Circ.*, 11643
- Jin, Z. & Fan., Y., 2007, *MNRAS*, 378, 1043
- Jung, G.V., 1989, *ApJ*, 338, 972
- Kalberla, P. M., Burton, W. B., Hartmann, D., Arnal, E. M., Bajaja, E., Morras, R., Poppel, W. G., 2005, *A&A*, 440, 775
- Klebesadel, R., Strong, I. & Olson, R. 1973, *ApJ*, 182, L85

- Klotz, A., et al., 2011a, GCN Circ., 11630
- Klotz, A., et al., 2011b, GCN Circ., 11632
- Kobayashi, S., 2000, ApJ, 545, 807
- Kobayashi, S., Zhang, B., Mészáros, P., Burrows, D. N. 2007, ApJ, 655, 391
- Kong, S. W., 2010, MNRAS, 402, 409
- Kumar, P., & McMahon, R. 2008, MNRAS, 384, 33
- Kumar, P., Panaitescu, A. 2000, ApJ, 541, L51
- Kumar, P., Panaitescu, A. 2008, MNRAS, 391, L19
- Lazzati, D., et al., 2002a, MNRAS, 330, 583
- Lazzati, D., et al., 2002b, A&A, 396, L5
- Lazzati, D., Morsony, B. J., Begelman, M. C., 2009, ApJ, 700, 47
- Lazzati, D., & Begelman, M. C., 2010, ApJ, 725, 1137
- Lazzati, D., Morsony, B. J., Begelman, M. C., 2011, ApJ, 732, 34
- Lee, I., Im, M., & Urata, Y. 2010, JKAS 43, 95
- Liang, E., et al., 2006, ApJ, 646, 351
- Liang, E., Yi, S., Zhang, J., Lu, H., Zhang, B.-B. & Zhang, B., 2010, ApJ, 725, 2209
- Li, Z., Waxman, E., 2008, ApJ, 674, L65
- Mao, J., Malesani, D., D’Avanzo, P., et al. 2011, arXiv:1112.0744
- Meegan, C., et al., 2009, ApJ, 702, 791
- Medvedev, M. V. 2006, ApJ, 637, 869
- Medvedev, M. V., Loeb, A. 1999, ApJ, 526, 697
- Mészáros, P. 2006, Rep. Prog. Phys. 69, 2259
- Mészáros, P. & Rees, M. J. 1997, ApJ, 476, 232
- Mészáros, P. & Rees, M. J. 1999, MNRAS, 306, L39

- Mészáros, P., et al., 2006, *Rep. Prog. Phys.*, 69, 2259
- Molinari, E., et al., 2007, *A&A*, 469, 13
- Nakar, E. & Granot, J., 2007, *MNRAS*, 380, 1744
- Nardini, M., et al., 2011, *A&A*, 531, 39
- Nishikawa, K.-I. et al. 2009, *ApJ*, 698, L10
- Oates S. R. et al., 2009, *MNRAS*, 395, 490
- Ovaldsen, J., et al., 2007, *ApJ*, 662, 294
- Pal'shin, V. 2011, *GCN Circ.*, 11697
- Panaitescu A., Kumar P., 2004, *MNRAS*, 353, 511
- Panaitescu, A. & Vestrand, W. T., 2011, *arXiv:1009.3947*
- Pe'er, A., Waxman, E., 2005, *ApJ*, 633, 1018
- Pe'er, A., Mészáros, P., Rees, M. J., 2006, *ApJ*, 642, 995
- Pe'er, A., Zhang, B. 2006, *ApJ*, 653, 454
- Piran, T., 2005, *AIP Conference Proceedings*, 784, 164
- Piran, T., Sari, R., Zou, Y. C., 2009, *MNRAS*, 393, 1107
- Poole G. et al. 2008, *MNRAS*, 383, 627
- Pozanenko, A., et al., 2008, *Astronomy Letters*, 34, 141144
- Quimby, R. M., et al. 2006, *ApJ*, 640, 402
- Racusin, J. et al., *Nature*, 455, 183
- Rees, M. J. & Mészáros, P. 1992, *MNRAS*, 258, 41
- Rees, M. J. & Mészáros, P. 1994, *ApJ*, 430, L93
- Roming, P. W. A., Kennedy, T. E., Mason, K. O., et al. 2005, *Space Sci. Rev.*, 120, 95
- Rossi, A., et al. 2011, *A&A*, 529, 142
- Rothschild, R.E., et al. 1998, *ApJ*, 496, 538

- Rykoff, E. S., et al. 2009, *ApJ*, 702, 489
- Sahu, D. K., & Anto, P., 2011, *GCN Circ.*, 11670
- Sakamoto, T., et al. 2011a, *ApJS*, 195, 2
- Sakamoto, T., et al. 2011b, *PASJ*, 63, 215
- Sakamoto, T., et al., 2011c, *GCN Circ.*, 11692
- Sari, R., 1999, *ApJ*, 524, 43
- Sari, R. & Esin, A. A., 2001, *ApJ*, 548, 787
- Sari, R. & Piran, T., 1995, *ApJ*, 455, L143
- Sari, R. & Piran, T., 1999, *ApJ*, 517, L109
- Sari, R., Piran, T. & Narayan R., 1998, *ApJ*, 497, L17
- Sari, R., Piran, T. & Halpern J., 1999, *ApJ*, 519, L17
- Savaglio, S., Glazebrook, K. & LeBorgne, D., 2009, *ApJ*, 691, 182
- Schaefer, B. E., et al., 2011, *GCN Circ.*, 11631
- Schlegel, D. J., Finkbeiner, D. P. & Davis, M. 1998, *ApJ*, 500, 525
- Shen, R., Kumar P., Piran T., 2010, *MNRAS*, 403, 229
- Shen, R. & Matzner C., 2012, *ApJ*, 744, 36
- Shen, R. & Zhang, B., 2009, *MNRAS*, 398, 1936
- Silva, R., Fumagalli., M., Worseck., G. & Prochaska, X. 2011, *GCN Circ.*, 11635
- Sizun, P. et al. 2004, in *Proceedings of the 5th INTEGRAL Workshop on the INTEGRAL Universe*, ed. V. Schönfelder, G. Lichti & C. Winkler, *ESA SP-552*, 815
- Smith, J., et al. 2002, *AJ*, 123, 2121
- Sugita, S., et al., 2011, *GCN Circ.*, 11682
- Tagliaferri, G. et al. 2005, *Nature*, 436, 985
- Toma, K., Wu, X.-F., Mészáros, P., 2011, *MNRAS*, 415, 1663

- Ukwatta, T., et al., 2011, GCN Circ., 11655
- Updike, A. C., et al., 2008, ApJ, 685, 361
- Urata, Y., Chuang, C. & Huang, K., 2011, GCN Circ., 11648
- van Eerten, H. J., MacFadyen, A. I., 2011, ApJ, 733, 37
- Volnova, A., et al., 2010, GCN Circ., 11270
- Volnova, A., Klunko, E., Pozanenko, A., 2011, GCN Circ., 11672
- Vreeswijk, P., et al., 2011, GCN Circ., 11640
- Vurm, I., Beloborodov, A. M., Poutanen, J. 2011, ApJ, in press (arXiv:1104.0394)
- Waxman, E. & Draine, B. T., 2000, ApJ, 537, 796
- Weibel, E. S. 1959, PRL, 2, 83
- Wijers, R., Rees, M., Mészáros, P., 1997, MNRAS, 288, 51
- Xue, R., Fan, Y. & Wei, D., 2009, A&A, 498, 671
- Yamaoka, K., et al., 2009, PASJ, 61, 35
- Yu, Y. W., Wang, X. Y. & Dai, Z. G., 2009, ApJ, 692, 1662
- Zhang, B., 2011, Comptes Rendus Physique, 12, 206 (arXiv:1104.0932)
- Zhang, B., Fan, Y. Z., Dyks, J. et al. 2006, ApJ, 642, 354
- Zhang, B., Kobayashi S. & Mészáros P., 2003, ApJ, 595, 950
- Zhang, B. & Mészáros, P. 2002, ApJ, 581, 1236
- Zhang, B. & Mészáros, P. 2004, IJMPA, 19, 2385
- Zhang, B. & Yan, H. 2011, ApJ, 726, 90
- Zou, Y., Wu, X. & Dai, Z., 2005, MNRAS, 363, 93

Table 6. Photometric observations for GRB 110205A from ground-based telescopes

T-T ₀ (s)	Exp (s)	Mag	Error	Filter	T-T ₀ (s)	Exp (s)	Mag	Error	Filter
ROTSE-IIIb									
135.5	107.0	17.79	0.42	<i>C</i>	1695.7	60.0	14.84	0.06	<i>C</i>
340.2	282.2	16.42	0.11	<i>C</i>	1765.0	60.0	14.89	0.08	<i>C</i>
520.5	60.0	16.33	0.20	<i>C</i>	1834.2	60.0	15.04	0.09	<i>C</i>
589.6	60.0	15.75	0.12	<i>C</i>	1903.0	60.0	15.01	0.07	<i>C</i>
658.4	60.0	15.25	0.09	<i>C</i>	1971.8	60.0	15.22	0.08	<i>C</i>
727.5	60.0	14.81	0.06	<i>C</i>	2040.7	60.0	15.28	0.08	<i>C</i>
796.6	60.0	14.50	0.06	<i>C</i>	2109.5	60.0	15.23	0.07	<i>C</i>
865.7	60.0	14.27	0.05	<i>C</i>	2178.4	60.0	15.44	0.11	<i>C</i>
935.1	60.0	14.19	0.04	<i>C</i>	2247.2	60.0	15.40	0.11	<i>C</i>
1004.3	60.0	14.08	0.03	<i>C</i>	2384.7	60.0	15.51	0.11	<i>C</i>
1073.5	60.0	14.06	0.03	<i>C</i>	2453.9	60.0	15.46	0.11	<i>C</i>
1142.7	60.0	14.14	0.05	<i>C</i>	2660.7	60.0	15.71	0.11	<i>C</i>
1211.9	60.0	14.18	0.04	<i>C</i>	2868.0	60.0	15.83	0.12	<i>C</i>
1281.0	60.0	14.31	0.06	<i>C</i>	2937.2	60.0	16.02	0.13	<i>C</i>
1350.3	60.0	14.40	0.06	<i>C</i>	3075.3	60.0	15.82	0.15	<i>C</i>
1419.5	60.0	14.53	0.05	<i>C</i>	3144.5	60.0	15.96	0.15	<i>C</i>
1489.1	60.0	14.53	0.05	<i>C</i>	3213.4	60.0	16.00	0.13	<i>C</i>
1558.0	60.0	14.55	0.06	<i>C</i>	3593.1	680.0	16.15	0.05	<i>C</i>
1626.6	60.0	14.67	0.06	<i>C</i>	-	-	-	-	-
LOT (AB magnitude)									
39647.6	180.0	20.95	0.07	<i>g'</i>	43061.7	300.0	19.49	0.06	<i>z'</i>
42062.9	300.0	21.05	0.05	<i>g'</i>	39856.7	180.0	20.32	0.05	<i>r'</i>
45217.0	600.0	20.93	0.03	<i>g'</i>	42392.9	300.0	20.47	0.04	<i>r'</i>
48824.2	600.0	20.90	0.02	<i>g'</i>	45846.0	600.0	20.35	0.04	<i>r'</i>
52111.7	600.0	21.07	0.03	<i>g'</i>	49453.2	600.0	20.42	0.03	<i>r'</i>
55478.8	600.0	21.25	0.03	<i>g'</i>	52740.7	600.0	20.51	0.02	<i>r'</i>
58774.9	600.0	21.33	0.04	<i>g'</i>	56108.6	600.0	20.70	0.03	<i>r'</i>
62047.7	600.0	21.44	0.04	<i>g'</i>	59404.8	600.0	20.80	0.03	<i>r'</i>
65421.7	600.0	21.55	0.04	<i>g'</i>	62677.6	600.0	20.97	0.04	<i>r'</i>

Table 6—Continued

T-T ₀ (s)	Exp (s)	Mag	Error	Filter	T-T ₀ (s)	Exp (s)	Mag	Error	Filter
40064.1	180.0	19.97	0.06	<i>i'</i>	66052.4	600.0	20.98	0.03	<i>r'</i>
42720.4	300.0	20.19	0.05	<i>i'</i>	68767.1	600.0	21.08	0.04	<i>r'</i>
46474.1	600.0	20.11	0.03	<i>i'</i>	69377.1	600.0	21.10	0.04	<i>r'</i>
50079.6	600.0	20.13	0.03	<i>i'</i>	69987.9	600.0	21.22	0.05	<i>r'</i>
53368.0	600.0	20.31	0.03	<i>i'</i>	129844.0	600.0	22.50	0.17	<i>r'</i>
56735.0	600.0	20.45	0.04	<i>i'</i>	130563.0	600.0	22.54	0.15	<i>r'</i>
60032.0	600.0	20.62	0.04	<i>i'</i>	131174.0	600.0	22.36	0.11	<i>r'</i>
63304.9	600.0	20.69	0.05	<i>i'</i>	133798.0	600.0	22.47	0.09	<i>r'</i>
66678.8	600.0	20.81	0.04	<i>i'</i>	134409.0	600.0	22.38	0.09	<i>r'</i>
40287.9	180.0	19.68	0.09	<i>z'</i>	135019.0	600.0	22.60	0.12	<i>r'</i>
HCT									
67639.0	1080.0	21.00	0.04	<i>R</i>	72379.0	600.0	21.15	0.04	<i>R</i>
69019.0	540.0	21.00	0.05	<i>R</i>	-	-	-	-	-
0.61-m Lightbuckets									
20747.0	300.0	18.67	0.02	<i>C</i>	27549.9	300.0	19.19	0.08	<i>R</i>
GRAS 005									
3536.8	600.0	15.98	0.02	<i>C</i>	4248.7	600.0	16.44	0.02	<i>R</i>
5327.4	300.0	16.51	0.02	<i>C</i>	5857.5	600.0	16.89	0.03	<i>R</i>
6902.9	600.0	17.02	0.03	<i>C</i>	6378.8	300.0	17.10	0.04	<i>R</i>
8366.9	300.0	17.33	0.04	<i>C</i>	7992.8	300.0	17.62	0.08	<i>R</i>
1.5-m OSN									
10152.2	300.0	18.93	0.03	<i>B</i>	12747.2	90.0	18.15	0.02	<i>R</i>
11527.2	300.0	19.07	0.03	<i>B</i>	13337.9	90.0	18.18	0.03	<i>R</i>
12426.7	150.0	19.17	0.03	<i>B</i>	14361.8	90.0	18.34	0.03	<i>R</i>
13091.5	150.0	19.21	0.03	<i>B</i>	14856.1	90.0	18.32	0.03	<i>R</i>
14115.7	150.0	19.32	0.03	<i>B</i>	85598.9	3300.0	20.89	0.05	<i>R</i>
14610.0	150.0	19.38	0.04	<i>B</i>	10489.4	300.0	18.67	0.06	<i>U</i>

Table 6—Continued

T-T ₀ (s)	Exp (s)	Mag	Error	Filter	T-T ₀ (s)	Exp (s)	Mag	Error	Filter
76574.1	400.0	21.87	0.17	<i>B</i>	11871.4	500.0	18.96	0.06	<i>U</i>
9871.3	240.0	17.22	0.02	<i>I</i>	13592.3	500.0	19.22	0.06	<i>U</i>
11278.2	240.0	17.41	0.02	<i>I</i>	9644.8	180.0	18.04	0.02	<i>V</i>
12840.2	200.0	17.59	0.02	<i>I</i>	11094.4	180.0	18.35	0.02	<i>V</i>
13430.8	120.0	17.65	0.03	<i>I</i>	12653.7	90.0	18.55	0.02	<i>V</i>
14454.7	120.0	17.77	0.03	<i>I</i>	13244.3	90.0	18.61	0.03	<i>V</i>
14949.0	120.0	17.78	0.03	<i>I</i>	14268.5	90.0	18.71	0.04	<i>V</i>
77630.9	300.0	20.56	0.19	<i>I</i>	14762.8	90.0	18.66	0.04	<i>V</i>
9409.4	180.0	17.59	0.02	<i>R</i>	76977.2	350.0	21.68	0.19	<i>V</i>
1-m LOAO									
13101.0	720.0	19.32	0.16	<i>B</i>	12846.0	180.0	18.16	0.03	<i>R</i>
11974.0	180.0	18.14	0.03	<i>R</i>	13273.0	180.0	18.22	0.03	<i>R</i>
12416.0	180.0	18.11	0.03	<i>R</i>	-	-	-	-	-
BOOTES-1									
219.4	117.0	17.43	0.38	<i>C</i>	2715.2	49.0	15.66	0.07	<i>C</i>
1603.5	48.0	14.61	0.05	<i>C</i>	2832.0	64.0	15.74	0.07	<i>C</i>
2118.2	48.0	15.18	0.05	<i>C</i>	3096.5	197.0	15.81	0.04	<i>C</i>
2218.1	48.5	15.29	0.05	<i>C</i>	3709.1	413.0	16.21	0.04	<i>C</i>
2317.5	48.0	15.45	0.06	<i>C</i>	4621.4	495.5	16.54	0.05	<i>C</i>
2417.5	48.5	15.44	0.06	<i>C</i>	5615.5	495.5	16.88	0.08	<i>C</i>
2516.8	48.0	15.35	0.05	<i>C</i>	6658.3	545.0	17.15	0.08	<i>C</i>
2615.8	48.0	15.51	0.07	<i>C</i>	8066.6	859.5	17.59	0.10	<i>C</i>
BOOTES-2									
939.3	5.0	14.40	0.04	<i>R</i>	6300.8	363.5	17.19	0.04	<i>R</i>
994.7	5.0	14.24	0.04	<i>R</i>	7149.9	484.5	17.42	0.04	<i>R</i>
2015.1	72.5	15.26	0.05	<i>R</i>	8362.6	727.0	17.65	0.04	<i>R</i>
2375.1	63.0	15.63	0.08	<i>R</i>	9818.1	969.0	17.98	0.05	<i>R</i>
5120.9	189.5	16.67	0.04	<i>R</i>	11758.0	969.5	18.16	0.06	<i>R</i>

Table 6—Continued

T-T ₀ (s)	Exp (s)	Mag	Error	Filter	T-T ₀ (s)	Exp (s)	Mag	Error	Filter
5373.4	187.0	16.83	0.04	<i>R</i>	13940.7	1212.0	18.52	0.08	<i>R</i>
5748.5	187.0	17.10	0.05	<i>R</i>	-	-	-	-	-
1.23-m Calar Alto									
2467.0	60.0	15.59	0.06	<i>R</i>	9692.0	60.0	17.88	0.08	<i>R</i>
2582.0	60.0	15.64	0.06	<i>R</i>	10202.0	60.0	17.91	0.05	<i>R</i>
4198.0	60.0	16.48	0.05	<i>R</i>	10712.0	60.0	18.02	0.05	<i>R</i>
4661.0	60.0	16.60	0.04	<i>R</i>	11215.0	60.0	18.05	0.05	<i>R</i>
5107.0	60.0	16.73	0.05	<i>R</i>	11336.0	60.0	18.10	0.05	<i>R</i>
5559.0	60.0	16.85	0.05	<i>R</i>	11835.0	60.0	18.15	0.05	<i>R</i>
6008.0	60.0	16.99	0.05	<i>R</i>	12337.0	60.0	18.26	0.06	<i>R</i>
6461.0	60.0	17.05	0.05	<i>R</i>	12844.0	60.0	18.26	0.07	<i>R</i>
6909.0	60.0	17.23	0.04	<i>R</i>	13353.0	60.0	18.28	0.05	<i>R</i>
7358.0	60.0	17.41	0.05	<i>R</i>	13905.0	60.0	18.34	0.05	<i>R</i>
7804.0	60.0	17.49	0.05	<i>R</i>	14018.0	60.0	18.41	0.05	<i>R</i>
8670.0	60.0	17.73	0.05	<i>R</i>	14128.0	60.0	18.35	0.05	<i>R</i>
9182.0	60.0	17.75	0.05	<i>R</i>	14239.0	60.0	18.45	0.06	<i>R</i>
2.2-m Calar Alto									
9475.0	100.0	17.67	0.03	<i>R</i>	12388.0	500.0	18.13	0.03	<i>R</i>
10064.0	500.0	17.76	0.03	<i>R</i>	12962.0	500.0	18.18	0.03	<i>R</i>
10639.0	500.0	17.88	0.03	<i>R</i>	13535.0	500.0	18.26	0.03	<i>R</i>
11214.0	500.0	17.97	0.03	<i>R</i>	14109.0	500.0	18.33	0.03	<i>R</i>
11787.0	500.0	18.04	0.03	<i>R</i>	14706.0	500.0	18.41	0.03	<i>R</i>
15281.0	500.0	18.49	0.03	<i>R</i>	-	-	-	-	-
1.6-m AZT-33IK									
37988.0	3060.0	19.97	0.08	<i>R</i>	62132.0	6600.0	20.94	0.07	<i>R</i>
Zeiss-600									
794.0	60.0	14.47	0.04	<i>R</i>	2006.2	60.0	15.26	0.06	<i>V</i>

Table 6—Continued

T-T ₀ (s)	Exp (s)	Mag	Error	Filter	T-T ₀ (s)	Exp (s)	Mag	Error	Filter
853.6	60.0	14.18	0.03	<i>R</i>	2068.4	60.0	15.55	0.06	<i>V</i>
918.4	60.0	14.08	0.02	<i>R</i>	2128.0	60.0	15.52	0.06	<i>V</i>
1022.1	60.0	14.03	0.02	<i>R</i>	2230.0	2.0	15.27	0.05	<i>R</i>
1081.7	60.0	14.00	0.02	<i>R</i>	2350.9	2.0	15.46	0.05	<i>R</i>
1142.2	60.0	14.07	0.02	<i>R</i>	2742.3	2.0	15.54	0.06	<i>R</i>
1204.4	60.0	14.09	0.02	<i>R</i>	3133.7	2.0	15.92	0.09	<i>R</i>
1264.0	60.0	14.34	0.02	<i>R</i>	3284.9	2.0	16.06	0.08	<i>R</i>
1323.7	60.0	14.29	0.03	<i>R</i>	3436.1	2.0	16.08	0.04	<i>R</i>
1385.9	60.0	14.37	0.02	<i>R</i>	3557.9	2.0	16.11	0.04	<i>R</i>
1446.3	60.0	14.48	0.03	<i>R</i>	3678.9	2.0	16.04	0.06	<i>R</i>
1506.0	60.0	14.52	0.03	<i>R</i>	3799.9	2.0	16.16	0.05	<i>R</i>
1568.2	60.0	14.59	0.03	<i>R</i>	3921.7	2.0	16.19	0.05	<i>R</i>
1627.8	60.0	14.58	0.03	<i>R</i>	4042.7	2.0	16.19	0.05	<i>R</i>
1688.3	60.0	14.74	0.03	<i>R</i>	4163.6	2.0	16.30	0.06	<i>R</i>
1814.4	60.0	14.84	0.03	<i>R</i>	4345.9	4.0	16.36	0.05	<i>R</i>
1886.1	60.0	15.16	0.09	<i>V</i>	4588.7	4.0	16.44	0.05	<i>R</i>
1945.7	60.0	15.38	0.04	<i>V</i>	4830.6	4.0	16.59	0.06	<i>R</i>

Table 7. Photometric observations for GRB 110205A from *Swift*/UVOT

T-T ₀ (s)	Error (s)	Count	Error	Filter	T-T ₀ (s)	Error (s)	Count	Error	Filter
169.0	5.0	3.905	0.890	<i>white</i>	24517.0	149.9	1.133	0.130	<i>white</i>
179.0	5.0	2.807	0.812	<i>white</i>	24734.3	63.5	1.037	0.198	<i>white</i>
189.0	5.0	2.963	0.840	<i>white</i>	35675.8	149.9	0.654	0.122	<i>white</i>
199.0	5.0	3.326	0.877	<i>white</i>	35979.3	149.9	0.653	0.123	<i>white</i>
209.0	5.0	9.487	1.203	<i>white</i>	36284.1	149.9	0.474	0.089	<i>white</i>
219.0	5.0	7.664	1.120	<i>white</i>	75564.8	149.9	0.234	0.080	<i>white</i>
229.0	5.0	4.538	0.939	<i>white</i>	75868.3	149.9	0.256	0.081	<i>white</i>
239.0	5.0	4.255	0.916	<i>white</i>	76171.9	149.9	0.316	0.083	<i>white</i>
249.0	5.0	2.964	0.845	<i>white</i>	87890.9	92.9	0.177	0.099	<i>white</i>
259.0	5.0	2.689	0.831	<i>white</i>	99845.1	88.9	0.085	0.100	<i>white</i>
269.0	5.0	2.722	0.829	<i>white</i>	110704.6	322.4	0.106	0.052	<i>white</i>
279.0	5.0	2.633	0.802	<i>white</i>	117007.3	147.4	0.008	0.075	<i>white</i>
289.0	5.0	3.229	0.858	<i>white</i>	122512.3	237.9	0.028	0.059	<i>white</i>
299.0	5.0	3.095	0.863	<i>white</i>	128037.7	322.4	0.097	0.052	<i>white</i>
308.9	4.9	2.720	0.826	<i>white</i>	133882.8	299.9	0.100	0.054	<i>white</i>
611.8	9.9	20.129	1.184	<i>white</i>	139643.2	305.9	0.034	0.052	<i>white</i>
784.5	9.9	63.173	2.257	<i>white</i>	145379.3	319.4	0.047	0.051	<i>white</i>
950.3	74.8	88.866	1.043	<i>white</i>	151192.4	308.4	0.167	0.055	<i>white</i>
1190.9	9.9	95.569	3.037	<i>white</i>	156929.3	321.9	0.038	0.051	<i>white</i>
1365.9	9.9	78.130	2.615	<i>white</i>	162706.6	321.4	0.041	0.051	<i>white</i>
1538.4	9.9	64.515	2.290	<i>white</i>	168487.5	320.9	0.042	0.051	<i>white</i>
1711.7	9.9	52.993	2.027	<i>white</i>	185834.0	315.4	0.006	0.051	<i>white</i>
5166.4	99.9	10.865	0.283	<i>white</i>	203156.9	319.9	0.088	0.052	<i>white</i>
6602.8	99.9	7.511	0.246	<i>white</i>	209526.6	120.9	0.019	0.083	<i>white</i>
11906.7	149.9	2.834	0.152	<i>white</i>	220477.0	322.9	0.022	0.050	<i>white</i>
12210.4	149.9	2.752	0.150	<i>white</i>	232055.5	315.9	0.042	0.052	<i>white</i>
12513.8	149.9	2.755	0.151	<i>white</i>	-	-	-	-	<i>white</i>
150.5	4.9	1.107	0.449	<i>v</i>	52773.8	149.9	0.077	0.039	<i>v</i>
661.9	9.9	6.853	0.643	<i>v</i>	53077.3	149.9	0.067	0.038	<i>v</i>
834.2	9.9	13.718	0.903	<i>v</i>	71192.4	18.0	0.069	0.121	<i>v</i>

Table 7—Continued

T-T ₀ (s)	Error (s)	Count	Error	Filter	T-T ₀ (s)	Error (s)	Count	Error	Filter
1066.4	9.9	19.918	1.096	<i>v</i>	80344.4	149.9	0.004	0.035	<i>v</i>
1241.8	9.9	18.517	1.053	<i>v</i>	80648.3	149.9	0.047	0.037	<i>v</i>
1415.6	9.9	11.828	0.837	<i>v</i>	111203.5	169.5	0.063	0.036	<i>v</i>
1588.3	9.9	11.398	0.820	<i>v</i>	122914.8	158.1	0.038	0.035	<i>v</i>
1761.6	9.9	10.388	0.788	<i>v</i>	128677.6	310.6	0.049	0.026	<i>v</i>
5576.8	99.9	1.641	0.115	<i>v</i>	134477.4	288.0	0.013	0.026	<i>v</i>
7013.2	99.9	1.123	0.101	<i>v</i>	157567.5	309.5	0.018	0.025	<i>v</i>
16773.0	149.9	0.338	0.051	<i>v</i>	163345.1	309.6	0.015	0.024	<i>v</i>
17076.6	149.9	0.302	0.050	<i>v</i>	169123.9	308.7	0.018	0.025	<i>v</i>
17380.0	149.9	0.337	0.051	<i>v</i>	192030.6	102.3	0.039	0.045	<i>v</i>
41428.4	149.9	0.048	0.037	<i>v</i>	203748.6	264.3	0.050	0.028	<i>v</i>
41731.9	149.9	0.082	0.039	<i>v</i>	221119.4	312.7	0.016	0.024	<i>v</i>
42035.4	149.9	0.126	0.041	<i>v</i>	232682.9	304.9	0.013	0.025	<i>v</i>
52470.2	149.9	0.053	0.037	<i>v</i>	-	-	-	-	<i>v</i>
587.4	9.9	6.547	0.659	<i>b</i>	75259.9	149.9	0.114	0.050	<i>b</i>
760.2	9.9	20.774	1.144	<i>b</i>	87035.9	149.9	0.116	0.050	<i>b</i>
1164.5	9.9	33.987	1.501	<i>b</i>	87339.4	149.9	0.052	0.048	<i>b</i>
1341.7	9.9	28.043	1.347	<i>b</i>	87642.9	149.9	0.034	0.047	<i>b</i>
1514.1	9.9	21.021	1.154	<i>b</i>	99662.9	88.9	0.012	0.060	<i>b</i>
1686.7	9.9	18.354	1.076	<i>b</i>	110054.4	322.4	0.075	0.034	<i>b</i>
1860.6	9.9	15.713	1.035	<i>b</i>	116707.9	147.4	0.024	0.047	<i>b</i>
6397.2	99.9	2.714	0.148	<i>b</i>	122031.6	237.9	0.098	0.040	<i>b</i>
10993.9	149.9	0.958	0.093	<i>b</i>	127387.6	322.4	0.051	0.032	<i>b</i>
11297.6	149.9	1.020	0.094	<i>b</i>	133277.3	299.9	0.056	0.033	<i>b</i>
11601.7	149.9	1.102	0.095	<i>b</i>	139026.1	305.9	0.038	0.033	<i>b</i>
23604.9	149.9	0.332	0.059	<i>b</i>	144734.8	319.4	0.059	0.033	<i>b</i>
23908.6	149.9	0.405	0.061	<i>b</i>	150570.4	308.4	0.026	0.033	<i>b</i>
24212.1	149.9	0.359	0.060	<i>b</i>	156280.2	321.9	0.057	0.033	<i>b</i>
30146.5	149.9	0.265	0.056	<i>b</i>	162058.5	321.4	0.047	0.033	<i>b</i>
30449.9	149.9	0.308	0.058	<i>b</i>	167840.3	320.9	0.019	0.032	<i>b</i>

Table 7—Continued

T-T ₀ (s)	Error (s)	Count	Error	Filter	T-T ₀ (s)	Error (s)	Count	Error	Filter
30676.6	73.1	0.192	0.085	<i>b</i>	190956.6	319.9	0.086	0.034	<i>b</i>
34763.7	149.9	0.194	0.054	<i>b</i>	196608.1	144.9	0.009	0.046	<i>b</i>
35067.2	149.9	0.063	0.049	<i>b</i>	202511.7	319.9	0.003	0.031	<i>b</i>
35370.8	149.9	0.167	0.053	<i>b</i>	209280.3	120.9	0.045	0.053	<i>b</i>
59136.9	149.9	0.053	0.047	<i>b</i>	219825.9	322.9	0.006	0.032	<i>b</i>
59440.3	149.9	0.106	0.050	<i>b</i>	225640.3	315.9	0.040	0.032	<i>b</i>
74652.2	149.9	0.012	0.045	<i>b</i>	237196.2	315.9	0.008	0.032	<i>b</i>
336.9	15.0	0.311	0.170	<i>u</i>	65363.9	68.7	0.067	0.055	<i>u</i>
366.9	15.0	0.263	0.175	<i>u</i>	86123.4	149.9	0.047	0.032	<i>u</i>
396.9	15.0	0.453	0.187	<i>u</i>	86730.7	149.9	0.027	0.031	<i>u</i>
426.9	15.0	0.843	0.223	<i>u</i>	109403.9	322.4	0.029	0.021	<i>u</i>
456.9	15.0	0.618	0.199	<i>u</i>	114916.8	56.3	0.029	0.051	<i>u</i>
486.9	15.0	1.113	0.239	<i>u</i>	116407.8	147.4	0.031	0.031	<i>u</i>
516.9	15.0	1.753	0.288	<i>u</i>	126736.9	322.4	0.037	0.021	<i>u</i>
546.9	15.0	2.956	0.352	<i>u</i>	138408.5	305.9	0.002	0.020	<i>u</i>
566.8	4.9	3.160	0.632	<i>u</i>	144090.4	319.4	0.002	0.020	<i>u</i>
735.3	9.9	12.198	0.843	<i>u</i>	149947.9	308.4	0.030	0.022	<i>u</i>
1140.4	9.9	21.735	1.144	<i>u</i>	161409.7	321.4	0.028	0.021	<i>u</i>
1315.2	9.9	18.643	1.052	<i>u</i>	167193.0	320.9	0.003	0.020	<i>u</i>
1489.0	9.9	15.334	0.949	<i>u</i>	184561.2	315.4	0.047	0.022	<i>u</i>
1661.8	9.9	13.044	0.871	<i>u</i>	190310.9	319.9	0.029	0.022	<i>u</i>
1835.9	9.9	11.387	0.833	<i>u</i>	196145.9	311.4	0.003	0.020	<i>u</i>
6192.1	99.9	1.905	0.114	<i>u</i>	201865.8	319.9	0.009	0.020	<i>u</i>
7590.9	62.7	1.557	0.146	<i>u</i>	209033.6	120.9	0.008	0.033	<i>u</i>
22692.2	149.9	0.340	0.048	<i>u</i>	213551.4	300.9	0.009	0.021	<i>u</i>
22995.8	149.9	0.251	0.044	<i>u</i>	219174.3	322.9	0.033	0.021	<i>u</i>
23299.6	149.9	0.267	0.044	<i>u</i>	225002.7	315.9	0.004	0.020	<i>u</i>
29233.0	149.9	0.174	0.039	<i>u</i>	230780.7	315.9	0.029	0.021	<i>u</i>
29536.8	149.9	0.163	0.039	<i>u</i>	236558.5	315.9	0.017	0.021	<i>u</i>
29841.2	149.9	0.101	0.035	<i>u</i>	254513.9	859.1	0.005	0.012	<i>u</i>

Table 7—Continued

T-T ₀ (s)	Error (s)	Count	Error	Filter	T-T ₀ (s)	Error (s)	Count	Error	Filter
47582.1	149.9	0.080	0.034	<i>u</i>	260333.6	859.3	0.018	0.012	<i>u</i>
47885.6	149.9	0.095	0.036	<i>u</i>	266093.7	859.3	0.012	0.012	<i>u</i>
48069.1	29.9	0.277	0.111	<i>u</i>	271853.7	859.2	0.030	0.013	<i>u</i>
58224.4	149.9	0.068	0.033	<i>u</i>	277673.7	859.3	0.022	0.013	<i>u</i>
58527.9	149.9	0.063	0.033	<i>u</i>	282893.6	319.2	0.002	0.020	<i>u</i>
58831.6	149.9	0.112	0.036	<i>u</i>	317849.0	104.0	0.027	0.037	<i>u</i>
710.9	9.9	0.481	0.174	<i>uvw1</i>	5987.1	99.9	0.110	0.030	<i>uvw1</i>
1115.9	9.9	1.735	0.309	<i>uvw1</i>	7423.1	99.9	0.107	0.031	<i>uvw1</i>
1290.9	9.9	0.869	0.226	<i>uvw1</i>	18825.6	383.8	0.024	0.011	<i>uvw1</i>
1464.7	9.9	0.452	0.173	<i>uvw1</i>	28626.8	449.9	0.013	0.008	<i>uvw1</i>
1637.4	9.9	0.918	0.235	<i>uvw1</i>	46975.9	449.9	0.007	0.008	<i>uvw1</i>
1811.6	9.9	0.525	0.183	<i>uvw1</i>	57618.1	449.9	0.010	0.008	<i>uvw1</i>