



Photic zone niche partitioning, stratification, and carbon cycling in the tropical Indian Ocean during the Piacenzian

Deborah N. Tanguan^{1,2}, Ian R. Hall¹, Luc Beaufort³, Melissa A. Berke⁴, Alexandra Nederbragt¹, Paul
5 R. Bown²

¹School of Earth and Environmental Sciences, Cardiff University, Cardiff, United Kingdom

²Department of Earth Sciences, University College London, London, United Kingdom

³CNRS-CEREGE, BP 80, 13545 Aix-en-Provence Cedex 04, France

10 ⁴Department of Civil and Environmental Engineering and Earth Sciences, University of Notre Dame, Notre Dame, IN, USA

*Correspondence to: Deborah N. Tanguan (d.tanguan@ucl.ac.uk)

Abstract. The mid-Piacenzian Warm Period (mPWP; ~3.264–3.025 Ma) marks the most recent episode of sustained global
15 warmth, characterised by atmospheric carbon dioxide ($p\text{CO}_2$) levels similar to those of today. Despite this, our understanding of the vertical structure of the Pliocene ocean and its role in modulating global carbon cycling during this period remains poorly resolved. Here, we combine planktic (coccolith and planktic foraminifera) and benthic (benthic foraminifera) stable carbon ($\delta^{13}\text{C}$) and oxygen ($\delta^{18}\text{O}$) isotope records from the International Ocean Discovery Program (IODP) Site U1476 in the western tropical Indian Ocean (Mozambique Channel), to reconstruct surface-to-deep ocean conditions during the mPWP.
20 The consistently high vertical $\delta^{13}\text{C}$ and $\delta^{18}\text{O}$ gradients indicate long-term thermal stratification and increased carbon export in this moderately elevated $p\text{CO}_2$ world. Distinct isotopic signatures observed between the deep-photic zone coccolithophore *Florisphaera profunda* which dominates the coccolith assemblages, and mid-photic zone planktic foraminifera *Globigerinoides ruber* suggest ecological partitioning and differing sensitivities to upper ocean dynamics (e.g., stratification, nutrient supply, light intensity). A transient breakdown in stratification and deep ocean carbon storage during Marine Isotope
25 Stage M2 (~3.30–3.28 Ma), a glacial interval preceding the peak warmth of the mPWP, demonstrates the vulnerability of the tropical ocean structure to high-latitude climate forcing. Spectral analysis reveals pronounced obliquity-paced variations in both $\delta^{13}\text{C}$ and $\delta^{18}\text{O}$ records, linking high-latitude orbital forcing to carbon cycling in low-latitude regions. These findings offer important new constraints on the ocean–atmosphere carbon feedback during the mPWP and underscore the previously underappreciated role of the tropical Indian Ocean as a dynamic component of global carbon cycling during past warm
30 periods.



1 Introduction

The mid-Piacenzian Warm Period (mPWP; 3.264–3.025 million years ago, Ma) represents a pre-Quaternary interval of global warmth, characterised by polar amplification, elevated sea surface temperatures (SSTs), and reduced ice volume (Dowsett et al., 2016). Sustained global warmth defines the mPWP, contrasting with the progressively cooler and more variable climate of the Pleistocene, which is marked by intensified Northern Hemisphere glaciation and glacial–interglacial cycles. The mPWP occurred against a backdrop of long-term climate cooling and atmospheric carbon dioxide ($p\text{CO}_2$) concentrations of ~380 to 420 ppmv, comparable to modern levels (Bartoli et al., 2011; Seki et al., 2010; de la Vega et al., 2020), yet global mean temperatures were ~3 °C warmer than the pre-Industrial era (Salzmann et al., 2011; IPCC, 2023; Tierney et al., 2020). Unlike extreme greenhouse episodes in Earth’s history, such as the Paleocene–Eocene Thermal Maximum (PETM; ~56 Ma), which involved abrupt warming of ~5–8 °C under $p\text{CO}_2$ levels likely exceeding 1000 ppm (Zachos et al., 2008), the mPWP represents a more moderate warming scenario (1.2–5.2 °C; Haywood et al., 2000). This makes it a uniquely relevant analogue for understanding climate system sensitivity under $p\text{CO}_2$ levels near modern concentrations.

The increase in global temperatures during the mPWP were the result of elevated atmospheric $p\text{CO}_2$ levels (de la Vega et al., 2020), a reduction in planetary albedo associated with sea ice loss and vegetation changes leading to increased absorption of solar radiation (Chandan and Peltier, 2018), and enhanced ocean heat transport (Raymo et al., 1996). Climate models from the Pliocene Model Intercomparison Project Phase 2 (PlioMIP2) indicate a stronger Atlantic Meridional Overturning Circulation (AMOC) during this interval (Weiffenbach et al., 2023), consistent with earlier findings of an intensified meridional overturning circulation in the North Atlantic (Raymo et al., 1996). More pronounced warming occurred at high latitudes due to polar amplification, driven by the reduction of sea ice and snow cover, which lowered albedo and enhanced regional warming (Howell et al., 2014). Additionally, land surface and vegetation changes, particularly forest expansion and desert retreat, altered surface albedo and further contributed to global warming through feedback mechanisms (Zhang and Jiang, 2014). This warming led to rising sea levels due to reduced continental ice volume and thermal expansion of seawater (De Boer et al., 2014), significant alterations in both oceanographic and atmospheric circulation patterns, including intensified poleward heat transport and modified wind systems (McClymont et al., 2023; McClymont et al., 2020), and triggered significant shifts in marine biodiversity and ecosystem functioning through changes in species distributions during the mPWP (e.g., Larina et al., 2025).

In light of ongoing concerns regarding anthropogenic CO_2 forcing, the mPWP has been identified as the most relevant (and nearest) past analogue for future warm climate (Haywood et al., 2020; Dowsett et al., 2013), making it an ideal interval for high-resolution studies of sustained warm conditions and the abrupt cooling events that interrupted the warm background state (e.g., marine isotope stages (MIS) M2, KM2, G20) (Dolan et al., 2011). Despite its relevance, a key controversy persists regarding the carbon cycling mechanisms that sustained this prolonged warmth under $p\text{CO}_2$ levels that, while elevated



compared to Pre-Industrial values, remained lower than those associated with other major geological warm periods.

Specifically, the extent to which changes in ocean circulation and regional productivity contributed to global carbon storage and feedback mechanisms remains unresolved. Here we address this controversy by focusing on high-resolution records

70 from the western tropical Indian Ocean. This region has been understudied yet it is a dynamically important region during the Pliocene. The International Ocean Discovery Program (IODP) Site U1476 (15° 49.25' S; 41° 46.12' E; 2166 m water depth) in the Mozambique Channel recovered a continuous carbonate-rich succession spanning the Plio-Pleistocene (Hall et al., 2017), providing unparalleled resolution for the Piacenzian stage.

75 Site U1476 is located on the Davie Ridge at the northern entrance to the Mozambique Channel. This region is dynamically sensitive due to the influences of both Indian Ocean thermocline dynamics and high-latitude water mass fluxes (Hall et al., 2017). The Mozambique Channel is bordered by Madagascar and the southeastern African margin, where surface and subsurface currents vary significantly due to vigorous eddy activity and interactions with the broader Indian Ocean circulation systems (De Ruijter et al., 2002; Schouten et al., 2003). This dynamic circulation feeds into the Agulhas Current, 80 a major western boundary current that transports warm, saline waters southwestward toward the South Atlantic (Beal et al., 2011), playing an essential role in regulating the AMOC, a key mechanism for global ocean heat and salt redistribution (De Ruijter et al., 2002; Schott et al., 2009). Presently, the western tropical Indian Ocean exhibits a near equilibrium between surface ocean and $p\text{CO}_2$, resulting in low net air–sea CO_2 exchange (Takahashi et al., 2009; Guo and Timmermans, 2024), underscoring the importance of Site U1476 in both ocean circulation and climate-carbon cycle feedback mechanisms.

85 Here we present high resolution (~ 2.25 kyr) stable carbon ($\delta^{13}\text{C}$) and oxygen ($\delta^{18}\text{O}$) isotope records from fine fraction bulk carbonate ($<20\text{ }\mu\text{m}$, representing coccoliths) and benthic foraminifera, alongside lower resolution (average of ~ 25 kyr) $\delta^{13}\text{C}$ and $\delta^{18}\text{O}$ records from the planktic foraminifera *Globigerinoides ruber*, capturing significant changes in surface productivity, thermohaline restructuring, and deep-sea carbon accumulation (Zachos et al., 2001; Sigman and Boyle, 2000). Together, 90 these records offer a new opportunity to examine the oceanographic and biogeochemical feedback mechanisms that governed carbon cycling and sustained warmth during the mPWP.

2 Methods

2.1 Sampling strategy

95 Samples were selected between 79.80 m and 96.85 m depth on the stratigraphic splice, targeting the Piacenzian. Using the shipboard chronology based on combined calcareous nannofossil, planktic foraminifera, and magnetostratigraphy (Hall et al., 2017), samples were taken every 8 cm, resulting in 218 samples, which provides an average time resolution of ~ 2.25



thousand years (kyr). $\delta^{18}\text{O}$ and $\delta^{13}\text{C}$ stable isotopes were analysed from all 218 samples for the bulk coccolith fraction ($<20\ \mu\text{m}$) and benthic foraminifera, with 20 samples analysed for planktic foraminifera.

100

2.2 Age model

The age model for Site U1476 is based on tuning the benthic foraminifera $\delta^{18}\text{O}$ to the LR04 global stack (Lisiecki and Raymo, 2005) using QAnalyseries (Kotov and Pälike, 2018) (**Fig. S1a–1b**). The calibrated age model yielded sedimentation rates that range between ~ 2.5 and $4.7\ \text{cm kyr}^{-1}$ (average $\sim 3.5\ \text{cm kyr}^{-1}$) (**Fig. S1g–1h**), consistent with the nearby Deep Sea Drilling Project (DSDP) Site 242 ($\sim 2.5\ \text{cm kyr}^{-1}$; Simpson and Schlich, 1974), and with the shipboard estimate of 2.3 to $3.5\ \text{cm kyr}^{-1}$ (Hall et al., 2017).

105

2.3 Benthic foraminifera carbon and oxygen stable isotopes

Refrigerated samples were soaked in deionised (DI) water and placed in a spinner for 24 hours to disaggregate and then wet-sieved using a $60\ \mu\text{m}$ mesh. The fine ($<60\ \mu\text{m}$) and coarse ($>60\ \mu\text{m}$) fractions were oven-dried at $40\ ^\circ\text{C}$. After drying, the $>60\ \mu\text{m}$ fraction was dry-sieved; three specimens of benthic foraminifera *Cibicidoides wuellerstorfi* were picked from the $250\text{--}355\ \mu\text{m}$ size range. In intervals where there is not enough *C. wuellerstorfi*, other *Cibicidoides* species (i.e., *Cibicidoides bradyi*, *Cibicidoides mundulus*) or *Uvigerina* species were chosen. $\delta^{18}\text{O}$ and $\delta^{13}\text{C}$ were measured using a Finnigan MAT 253 with a Carbonate Kiel IV autosampler, where each sample was reacted with $70\ ^\circ\text{C}$ phosphoric acid (H_3PO_4). Analyses were performed at the Stable Isotope Facility, School of Earth and Environmental Sciences, Cardiff University (United Kingdom). Values are reported relative to the Vienna Pee Dee Belemnite (VPDB) scale and calibrated against NBS 19 and internal laboratory standards. The mean external reproducibility of carbonate standards is $\pm 0.02\ ‰$ for $\delta^{13}\text{C}$ and $\pm 0.03\ ‰$ for $\delta^{18}\text{O}$. For benthic foraminifera, only *C. wuellerstorfi* was used for $\delta^{13}\text{C}$ analyses, while both *Cibicidoides* spp. and *Uvigerina* spp. were used for $\delta^{18}\text{O}$. $\delta^{18}\text{O}$ values from *Cibicidoides* spp. were adjusted by $+0.64\ ‰$ to align with *Uvigerina* (Shackleton and Opdyke, 1973), while $\delta^{13}\text{C}$ values from *Uvigerina* were excluded. When replicate analyses were possible, values are reported as the average of the results. The two highly negative $\delta^{13}\text{C}$ values (-0.83 and $-0.62\ ‰$) were excluded from interpretation and considered outliers, likely reflecting analytical or sample-related artefacts rather than original environmental signals.

110

115

120

2.4 Planktic foraminifera carbon and oxygen stable isotopes

From the same dry-sieved $250\text{--}355\ \mu\text{m}$ fraction, we picked three specimens of planktic foraminifera *G. ruber*. *G. ruber* calcifies in the mixed layer between 20 and 50 m (Mohtadi et al., 2011) and represents the surface water column signal. $\delta^{18}\text{O}$ and $\delta^{13}\text{C}$ were measured using the same protocol as the benthic foraminifera, at the same facility.

125



130 2.5 Coccolith carbon and oxygen stable isotopes

A small amount of sediment (~1 g) was wet-sieved using a 20 µm mesh with buffered water (0.05 % ammonia diluted in DI water). The filtrate was collected and centrifuged to concentrate and obtain the desired fraction. The <20 µm fraction was placed in a watch glass and allowed to dry immediately, using a hotplate at 50 °C, with acetone added to hasten evaporation and drying. The dried material, which is considered to be all biogenic carbonate, was homogenised and then analysed for
135 $\delta^{18}\text{O}$ and $\delta^{13}\text{C}$ following the same procedure described above for planktic and benthic foraminifera at the same facility. Smear slides of selected samples were prepared and checked under a light microscope to make sure that the material is composed of at least 95 % coccoliths. Coccolithophores calcify in the photic layer and represent the upper 200 m of the water column (Winter et al., 1994). We assume similar calcification patterns for all the species, although we did not disregard potential “vital effects” in the interpretation of the isotopic results (Stoll, 2005). Since coccolithophores are the primary
140 carbonate producers in the investigated region, we consider the isotope record to provide a reliable picture of environmental upper ocean variations.

2.6 Calculation of isotopic gradients

To evaluate the vertical structure of the ocean, we calculated the isotopic gradients (Δ) between microfossil groups
145 representing distinct depth habitats within the water column. Specifically, we measured the differences in $\delta^{13}\text{C}$ and $\delta^{18}\text{O}$ between planktic foraminifera and coccoliths, benthic foraminifera and coccoliths, and benthic and planktic foraminifera. These gradients serve as a first-order approximation of vertical isotopic offsets across the photic zone, as well as between the surface and deep ocean layers. While $\delta^{13}\text{C}$ and $\delta^{18}\text{O}$ gradients between benthic and planktic foraminifera are well-established indicators of ocean stratification and carbon cycling (e.g., Hodell and Venz-Curtis, 2006), the use of gradients involving
150 coccoliths is less common. Nonetheless, studies by Hermoso et al. (2016; 2020) have shown that $\delta^{13}\text{C}$ offsets between coccoliths and planktic foraminifera are sensitive to physiological processes, such as vital effects linked to ambient $p\text{CO}_2$ levels. Based on this framework, we interpret the isotopic gradients involving coccoliths, both with planktic and benthic foraminifera, as integrated signals of upper ocean carbon cycling, stratification, and potential vertical habitat partitioning driven by environmental variability.

155

2.7 Coccolith assemblage composition and abundance

Species identification and counting were performed using the SYRACO (SYstème de Reconnaissance Automatique de Coccolithes) software at the European Centre for Research and Teaching in Environmental Geosciences (CEREGE, France). SYRACO applies neural network algorithms to classify coccoliths and extract quantitative parameters from segmented
160 digital images, enabling high-throughput and standardised assessment of coccolith assemblages (Beaufort et al., 2014). Water column stratification was assessed using a modified version of the *Florisphaera profunda* index for the Pleistocene Indian



Ocean record (Beaufort et al., 1997; Beaufort et al., 2001). To better reflect the assemblage dynamics observed in our Pliocene record, we adapted the original formula by using the relative abundances of small *Gephyrocapsa* (<3 µm) and *Reticulofenestra* (<3 µm, 3-5 µm), which exhibit ecological behaviour similar to the late Pleistocene species *Emiliania huxleyi* as used in the original equation. *F. profunda* is a deep photic zone species (~60 to 200 m in the water column; Winter et al., 1994), typically dominant under conditions of a deep thermocline and/or nutricline and low surface water productivity (Molfin and McIntyre, 1990). In contrast, *Gephyrocapsa* and *Reticulofenestra* are characteristic of the upper photic zone. Consequently, lower values of the stratification index indicate a more mixed water column, whereas values approaching 1 reflect stronger stratification. The modified stratification index is calculated as:

$$F. profunda \text{ index} = \frac{F. profunda}{(F. profunda + \text{small } Reticulofenestra + Reticulofenestra \text{ 3-5 } \mu\text{m})} \quad (1)$$

2.8 Statistical and time series analyses

To identify significant frequencies in the $\delta^{13}\text{C}$ and $\delta^{18}\text{O}$ isotopic signals, we performed single-Spectral analysis using the Acycle software package (Li et al., 2019). Prior to analysis, the stable isotope time series were linearly interpolated to equally spaced time intervals of 2.25 kyr. Bandpass filtering was applied to isolate specific orbital-scale components using the Astrochron R package (Meyers, 2014). Additionally, Morlet wavelet analysis was performed using the Paleontological Statistics software package (PAST; Hammer et al., 2009) to investigate the temporal evolution of periodicities in the time series.

3 Results and discussion

3.1 Vertical water column plankton community structure

The $\delta^{13}\text{C}$ record from the benthic foraminifera *C. wuellerstorfi* ($\delta^{13}\text{C}_{\text{BF}}$) exhibits values ranging from -0.40 to +0.82 ‰, with a mean of +0.35 ‰ (**Fig. 1a**). The overall positive values imply that the deep waters at Site U1476 were moderately enriched in ^{13}C , indicative of either recent ventilation or limited accumulation of respired carbon (Kroopnick, 1985). The amplitude of variability of 1.22 ‰ is comparable to that of other mPWP deep-water records in the Atlantic and Pacific, suggesting that while deep-water mass properties at Site U1476 were dynamic, they did not undergo major reorganisation or shift in water mass structure (e.g., Novak et al., 2024; Braaten et al., 2023).

The $\delta^{13}\text{C}$ record from the planktic foraminifera *G. ruber* ($\delta^{13}\text{C}_{\text{PF}}$) ranges from +0.52 to +1.63 ‰ (mean +1.10 ‰; **Fig. 1b**). These values align with the well-documented habitat of *G. ruber*, a surface-dwelling taxon that calcifies in the upper mixed layer (20-50 m; Mohtadi et al., 2011) and thus reflect the uppermost ocean $\delta^{13}\text{C}$ of dissolved inorganic carbon (DIC). This



$\delta^{13}\text{C}$ signal is influenced by photosynthetic carbon fixation and air-sea gas exchange (e.g., Ziveri et al., 2007; Bijma et al., 1999). The consistently positive $\delta^{13}\text{C}$ values throughout the interval suggest a continuous biological drawdown of ^{12}C and an
195 active surface-ocean biological pump, most likely supported by nutrient delivery to the photic zone via localised upwelling
(e.g., Faul et al., 2000) or thermocline shoaling events (Fedorov et al., 2013).

In contrast, the coccolith fraction $\delta^{13}\text{C}$ ($\delta^{13}\text{C}_{\text{CO}}$) record exhibits substantially lower values than *G. ruber*, ranging from -0.49 to $+0.74$ ‰, with an average of $+0.09$ ‰ (**Fig. 1c**). Coccolithophores (calcareous phytoplankton) are primary producers
200 inhabiting the photic zone (<200 m), often residing higher in the water column than planktic foraminifera (Ziveri et al., 2007). Still, some exceptional species, such as *F. profunda*, are found deeper within the photic zone (Winter et al., 1994) (**Fig. 1i**). Interestingly, the range of $\delta^{13}\text{C}_{\text{CO}}$ values overlaps with that of $\delta^{13}\text{C}_{\text{BF}}$ at this site. However, $\delta^{13}\text{C}_{\text{CO}}$ shows greater variability (**Fig. 1a, 1c**), with an overall trend similar to $\delta^{13}\text{C}_{\text{PF}}$ (**Fig. 1c**). This similarity in the range of $\delta^{13}\text{C}_{\text{CO}}$ values with the benthic record may indicate a partial integration of deep photic zone DIC signals, especially under stratified conditions.
205 The greater variability in $\delta^{13}\text{C}_{\text{CO}}$ likely results from a combination of mixed species assemblages, ecological variability in coccolithophore depth habitats, and differing physiological controls on carbon isotopic fractionation (Ziveri et al., 2003; Stoll et al., 2007a; Bolton et al., 2012).

In general, $\delta^{13}\text{C}_{\text{CO}}$ values would be predicted to be higher compared to deeper calcifiers, if directly linked to photosynthetic
210 fractionation. However, the lower average $\delta^{13}\text{C}_{\text{CO}}$ relative to $\delta^{13}\text{C}_{\text{PF}}$ at Site U1476 implies the influence of isotopically light DIC, likely originating from recycled organic carbon or stratified surface layers with limited vertical exchange (Stirnimann et al., 2024). In addition to water column dynamics, $\delta^{13}\text{C}_{\text{CO}}$ is influenced by species-specific vital effects—biologically mediated isotopic fractionations resulting from internal cellular processes during calcification (Ziveri et al., 2003; Stoll et al., 2002). These effects can vary considerably between taxa due to differences in carbon acquisition mechanisms, cellular
215 carbon demand, and calcification rates (Bolton et al., 2012). Such a discrepancy may also reflect seasonal or ecological variations in calcification depth, or a decoupling of coccolithophore and planktic foraminifera habitats, resulting from differential nutrient availability or varying growth seasons (e.g., Jonkers and Kučera, 2017; Stoll et al., 2007b). This hypothesis is supported by the high relative abundances of the deep photic zone coccolithophore species *F. profunda* (**Fig. 1e**). Its abundance here denotes a strongly stratified upper ocean and suggests that a substantial portion of coccolith
220 production likely occurred in deeper, nutrient-transition layers where the $\delta^{13}\text{C}$ of DIC is more heavily influenced by remineralised organic matter, potentially accounting for the overall low $\delta^{13}\text{C}_{\text{CO}}$ values. Although species-specific $\delta^{13}\text{C}$ measurements for *F. profunda* have not been documented, its ecological niche, being adapted to low-light, nutrient-rich environments and potentially relying on carbon sources with greater respired DIC contributions, implies that its calcite may carry more negative $\delta^{13}\text{C}$ values compared to the flora in the upper photic zone flora. This species-specific signal, if present,
225 could represent a vital effect contributing to the $\delta^{13}\text{C}_{\text{CO}}-\delta^{13}\text{C}_{\text{PF}}$ offset observed in the record.



The $\delta^{18}\text{O}$ values of benthic foraminifera ($\delta^{18}\text{O}_{\text{BF}}$) range from +2.09 to +3.28 ‰, with a mean value of +2.70 ‰ (**Fig. 1f**). These values are indicative of the cold and saline deep water characteristic of the Pliocene Indian Ocean, consistent with previous studies (e.g., Karas et al., 2009; Dupont et al., 2005; Hodell and Venz, 1992). In contrast, the $\delta^{18}\text{O}$ values of the planktic foraminifera *G. ruber* ($\delta^{18}\text{O}_{\text{PF}}$) exhibit much lighter values, ranging from -2.20 to +1.51 ‰, yielding an average of -1.84 ‰ (**Fig. 1g**). This record reflects warm SSTs and potentially reduced surface salinity, possibly linked to regional freshwater inputs or monsoonal variability (Saraswat et al., 2023) in the Mozambique Channel.

Coccolith $\delta^{18}\text{O}$ ($\delta^{18}\text{O}_{\text{CO}}$) values range from -1.39 to -0.64 ‰, with an average of -1.03 ‰ (**Fig. 1h**). Although coccolithophores are typically photosynthetic and inhabit the upper photic zone, the heavier $\delta^{18}\text{O}_{\text{CO}}$ compared to *G. ruber* suggests that a significant portion of this community's coccolith calcification may have occurred deeper within the photic zone. This interpretation assumes that both coccolithophores and *G. ruber* record similar seasonal conditions and reflect the $\delta^{18}\text{O}$ of ambient seawater without significant species-specific vital effect offsets on $\delta^{18}\text{O}$. Consistent with the $\delta^{13}\text{C}_{\text{CO}}$ recorded here, this contradicts the notion that coccolithophores calcify in shallower waters than *G. ruber*, which generally resides in the upper mixed layer. The heavier $\delta^{18}\text{O}_{\text{CO}}$ values could indicate significant contributions from deeper-dwelling coccolithophore species, especially those inhabiting the lower photic zone (up to ~200 m), such as *F. profunda* (Winter et al., 1994), supporting the interpretation that the coccolith fraction integrates signals from a broader vertical range of the photic zone, including thermally and isotopically distinct layers. Accordingly, the vertical gradient observed in $\delta^{18}\text{O}$, from heavier values in benthic foraminifera, to intermediate values in coccoliths, and the lightest values in *G. ruber*, indicate a stratified ocean structure, where $\delta^{18}\text{O}_{\text{CO}}$ represents conditions within the mid to lower photic zone, potentially influenced by deeper-dwelling species rather than solely the surface mixed layer. These differences in $\delta^{13}\text{C}$ and $\delta^{18}\text{O}$ values between the three plankton groups thus offer valuable insights into the vertical structure of the Pliocene water column and help constrain the ecological depth habitat of these plankton communities.

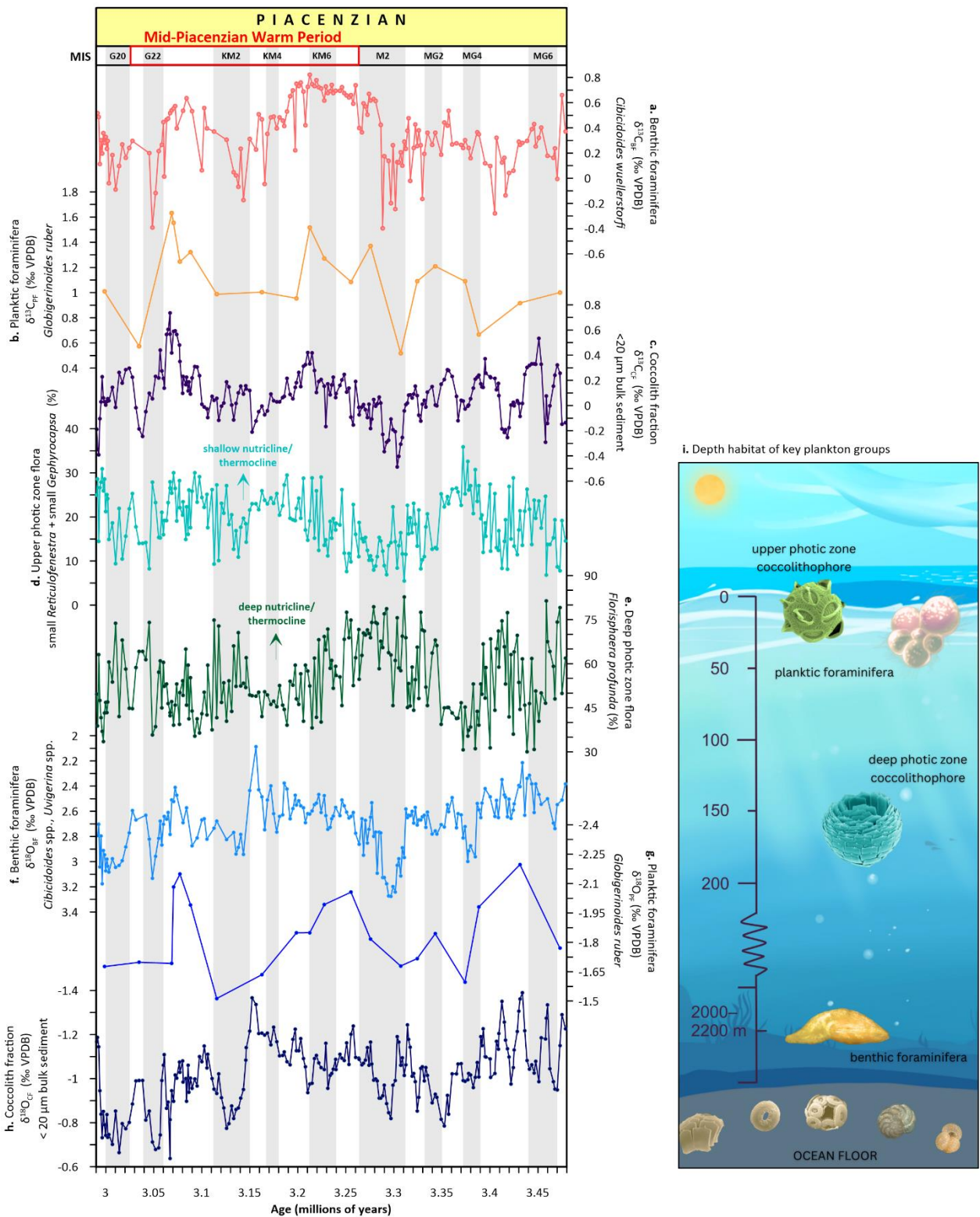




Figure 1: Carbon and oxygen isotope records and coccolithophore abundance data from depth-stratified plankton groups at Site U1476. (a) benthic foraminifera *Cibicidoides wuellerstorfi* $\delta^{13}\text{C}_{\text{BF}}$, (b) planktic foraminifera *Globigerinoides ruber* $\delta^{13}\text{C}_{\text{PF}}$, (c) fine fraction bulk coccolith $\delta^{13}\text{C}_{\text{CO}}$ ($<20\ \mu\text{m}$), (d) upper photic zone flora (small *Gephyrocapsa* and small *Reticulofenestra*) relative abundance, (e) deep photic zone flora *Florisphaera profunda* relative abundance, (f) benthic foraminifera *C. wuellerstorfi*, *Cibicidoides* spp., *Uvigerina* spp. $\delta^{18}\text{O}_{\text{BF}}$, (g) planktic foraminifera *G. ruber* $\delta^{18}\text{O}_{\text{PF}}$, (h) fine fraction bulk coccolith $\delta^{18}\text{O}_{\text{CO}}$ ($<20\ \mu\text{m}$), (i) depth habitat of key plankton groups (microfossil images, <http://www.mikrotax.org/Nannotax3>). The red box highlights the mid-Piacenzian Warm Period, and glacial stages are shown by grey horizontal bars (Lisiecki and Raymo, 2005).

3.2 Interpreting the $\delta^{13}\text{C}$ and $\delta^{18}\text{O}$ signature of coccolithophores relative to *G. ruber*

The $\delta^{13}\text{C}$ and $\delta^{18}\text{O}$ values derived from coccoliths are consistently more negative than those of the surface-dwelling planktic foraminifera *G. ruber* (**Fig. 1b–c, 1g–f; Fig. S2d–g**) despite both groups calcifying within the photic zone. Here we address these isotopic offsets.

Coccolithophore assemblage data from Site U1476 show that the community in this study area is strongly dominated by the deep-dwelling taxon *F. profunda* (**Fig. S2a**). Consequently, its dominance can shift the isotopic signal of the bulk coccolith fraction downward, particularly under stable stratification where production is high in the lower photic zone. Morphometric analysis using SYRACO shows that despite its consistently high relative abundances (**Fig. 1e, S2a**), *F. profunda* contributes only up to 2 % of the total coccolith calcite mass (**Fig. S2b**). In contrast, larger and more heavily calcified taxa such as *Reticulofenestra* spp. (up to ~43 %), *Pontosphaera* spp. (up to 39 %), *Helicosphaera* spp. (up to ~26 %), and *Calcidiscus leptoporus* (up to ~23 %) dominate the total calcite mass. However, when considering the total calcium carbonate (CaCO_3) contribution, *F. profunda* accounts for 11–69 % (mean ~34 %) of the total CaCO_3 in the $<20\ \mu\text{m}$ fraction compared to *Reticulofenestra* spp. (20–67 %, mean ~43 %), with each of the remaining taxa contributing $<7\%$ on average (**Fig. S2c**).

This distinction between the relative abundance and calcite mass is critical. While *F. profunda* coccoliths numerically dominate the assemblages, their thinner coccoliths reduce their mass contribution. Nonetheless, its consistent presence and substantial share of the CaCO_3 budget (**Fig. S2c**), can still skew the bulk isotopic signal toward lower values in the photic zone. This likely contributes to the more negative $\delta^{13}\text{C}$ and $\delta^{18}\text{O}$ values of the coccolith fraction relative to *G. ruber*, which calcifies in the well-lit, surface mixed layer and better reflects surface $\delta^{13}\text{C}$ -DIC and SSTs (Mohtadi et al., 2011). Poulton et al. (2017) further support this interpretation, showing that *F. profunda* dominates during stratified seasons when the nutricline deepens, and suggest that its persistence in low-light, deep photic conditions, possibly through mixotrophy or phagotrophy, reflects calcification well below the surface layer.



285 Interestingly, $\delta^{13}\text{C}_{\text{CO}}$ values partially converge with $\delta^{13}\text{C}_{\text{BF}}$, despite originating from much shallower depths. This pattern suggests that coccoliths may record DIC signals from the deep photic zone, where $\delta^{13}\text{C}$ can resemble that of intermediate or deep waters due to vertical segregation and respiration-driven ^{12}C enrichment (Broecker and Maier-Reimer, 2012). While their value overlaps with $\delta^{13}\text{C}_{\text{BF}}$, the higher variability in $\delta^{13}\text{C}_{\text{CO}}$ more closely resembles that of *G. ruber*, reflecting a mixed signal shaped by seasonal productivity, species turnover, and changing ecological niches.

290

Vital effects further complicate the interpretation of coccolith fraction isotopic records. Coccolithophores exhibit species-specific physiological controls on $\delta^{13}\text{C}$ and $\delta^{18}\text{O}$ fractionation, driven by differences in cellular carbon uptake, internal CO_2 concentration, and calcification rate, which can be attributed to a combination of ecological community structure, depth-related environmental gradients, and physiological (vital) effects (Bolton et al., 2012; Stoll, 2005; Ziveri et al., 2003). Taxa
295 such as *Helicosphaera* and *Calcidiscus* are known to display large $\delta^{13}\text{C}$ offsets even when cultured under identical conditions (Ziveri et al., 2003). The coccolith isotopic signal in bulk samples thus reflects a weighted average of multiple species, each with its physiological imprint.

Another consideration is the potential for diagenetic overprinting. Unlike planktic foraminifera, where hand-picking ensures
300 species purity, coccolith isotope data are derived from the $<20\text{ }\mu\text{m}$ bulk fraction, which may include other fine carbonate phases (e.g., foraminifera and calcareous dinoflagellate fragments). Nevertheless, several lines of evidence suggest that the signal is mainly of primary in origin. First, the sieving and processing protocol minimizes the inclusion of foraminiferal fragments and coarse recrystallized grains. Second, smear slide analyses confirm that the $<20\text{ }\mu\text{m}$ fraction is overwhelmingly composed ($>95\%$) of well-preserved coccoliths. Third, the isotopic trends observed (e.g., depleted $\delta^{13}\text{C}$ in association with
305 high *F. profunda*) are internally consistent with known ecological and depth preferences (Winter et al., 1994).

Given these complexities, caution is warranted when interpreting coccolith isotopic signals in bulk sediments. The influence of dominant taxa, such as *F. profunda*, combined with species-specific vital effects and depth-integrated geochemical gradients, may obscure signals from shallower-dwelling forms. This highlights the need for species-specific geochemical
310 analyses to resolve the contributions of individual taxa to the bulk signal. *F. profunda* in particular, with its association with oligotrophic environments and apparent ability to leave a disproportionate imprint on the carbonate record, presents a compelling target for future research aimed at refining palaeoceanographic reconstructions in stratified tropical settings.

3.3 Carbon cycling and stratification across the Piacenzian

315 High-resolution $\delta^{13}\text{C}$ and $\delta^{18}\text{O}$ records from Site U1476 spanning 3.48–2.99 Ma reveal sustained vertical isotopic gradients between surface (coccolithophores and planktic foraminifera) and deep (benthic foraminifera) carbon reservoirs during the



Piacenzian (**Fig. 2**). These gradients offer critical insights for understanding vertical ocean structure, water mass stratification, and the efficiency of the biological pump in the Mozambique Channel during a climate interval marked by both elevated global temperatures and moderate $p\text{CO}_2$ levels.

320

From 3.48 to ~3.31 Ma (prior to MIS M2 glaciation), the benthic foraminifera–coccolith $\delta^{13}\text{C}$ gradient ($\Delta \delta^{13}\text{C}_{\text{BF-CO}}$) remained relatively stable (**Fig. 2a**), suggesting sustained separation between surface and deep carbon reservoirs, indicative of a moderately efficient biological pump. A notable exception is a transient decline in $\Delta \delta^{13}\text{C}_{\text{BF-CO}}$ and the planktic foraminifera–coccolith $\delta^{13}\text{C}$ gradient ($\Delta \delta^{13}\text{C}_{\text{PF-CO}}$; **Fig. 2c**) between ~3.42 and 3.39 Ma, suggesting a brief episode of increased deep-ocean ventilation (**Fig. 2a**) and surface ocean mixing (**Fig. 2c**). Interestingly, during this same interval, the *F. profunda* stratification index briefly increases, typically signifying a well-developed deep chlorophyll maximum (e.g., Molino and McIntyre, 1990) and strong upper ocean stratification (e.g., Beaufort et al., 2001) (**Fig. 2d**). This suggests that while surface and subsurface layers remained stratified, limiting nutrient entrainment into the euphotic zone, ventilation and mixing occurred primarily at intermediate depths, sufficient to weaken deep–surface isotopic offsets without entirely disrupting the upper ocean density structure. Thus, the ocean likely experienced subsurface ventilation beneath a still-stratified surface layer, reflecting vertical decoupling between surface productivity dynamics and deeper overturning processes.

330

A progressive increase in $\Delta \delta^{13}\text{C}$ gradients occurred approaching MIS M2 glaciation, with $\Delta \delta^{13}\text{C}_{\text{BF-CO}}$ rising by +1.35 ‰ (**Fig. 2a**) and $\Delta \delta^{13}\text{C}_{\text{PF-CO}}$ by +1.13 ‰ (**Fig. 2c**). This increase in gradients, along with a sustained rise in the *F. profunda* index (**Fig. 2d**), suggests a re-establishment of a stratified ocean with reduced vertical exchange, consistent with long-term warming and decreased deep-water renewal (e.g., Lisiecki and Raymo, 2005; Andersson et al., 2002). During this phase, the benthic–planktic foraminifera $\delta^{13}\text{C}$ gradient ($\Delta \delta^{13}\text{C}_{\text{BF-PF}}$) remained moderately negative (~−0.73 ‰; **Fig. 2b**), reflecting the remineralization gradient within the mesopelagic zone (Hodell and Venz-Curtis, 2006), and supporting relatively stable export production processes.

340

The MIS M2 glaciation (~3.30–3.28 Ma) marks a significant departure from preceding conditions. At Site U1476, it is characterised by a sharp increase in the benthic foraminifera–coccolith $\delta^{18}\text{O}$ gradient ($\Delta \delta^{18}\text{O}_{\text{BF-CO}}$) of +0.78 ‰ (equivalent to ~−3.36 °C cooling) (**Fig. 2e**), and a peak in the benthic–planktic foraminifera $\delta^{18}\text{O}$ gradient ($\Delta \delta^{18}\text{O}_{\text{BF-PF}}$) (**Fig. 2f**), indicative of deep ocean cooling and enhanced vertical thermal stratification (De Schepper et al., 2014; De Schepper et al., 2009). Simultaneously, the *F. profunda* index reaches a sustained peak, signalling intensified surface ocean stratification, supported by a peak in the planktic foraminifera–coccolith $\delta^{18}\text{O}$ gradient ($\Delta \delta^{18}\text{O}_{\text{PF-CO}}$) (**Fig. 2g**). This points to a strengthened upper-ocean nutrient trap and reduced mixing, consistent with suppressed AMOC during M2 (Bell et al., 2015). These findings align with SST cooling observed in tropical and subtropical oceans (Herbert et al., 2016; McClymont et al., 2020) and support reduced vertical heat transport during M2 (Zhang et al., 2021). PlioMIP Phase 2 simulations further

350



suggest cooler conditions during M2, with expanded sea ice and regional cooling, particularly in high-latitude regions (e.g., Dolan et al., 2015; Haywood et al., 2020), reflecting a transient but globally significant glaciation within the generally warm mid-Pliocene climate.

355 The mPWP (~3.264–3.025 Ma) is characterised by overall stable vertical $\delta^{13}\text{C}$ gradients, relative to pre-M2 conditions. Although this interval was globally marked by high SSTs (~2–3 °C above modern; McClymont et al., 2023) and elevated $p\text{CO}_2$ (~350–450 ppm; Seki et al., 2010; de la Vega et al., 2020), Site U1476 reflects a regime of strong thermal stratification but reduced isotopic separation. Assemblage data indicate a proliferation of upper photic zone coccolithophore species (**Fig. 1d**), consistent with enhanced surface-layer productivity. However, the stable $\delta^{13}\text{C}$ gradients and limited deep-water
360 ventilation suggest that this productivity was primarily confined to the nutrient-replete surface and did not translate into efficient export to the deep ocean. This is consistent with a suppressed deep nutrient supply during this period due to reduced overturning and weakened thermocline ventilation (Ford et al., 2022). PlioMIP models simulate this stable warm period with reduced AMOC strength and weakened equatorial upwelling, particularly in the Indo-Pacific (Zhang et al., 2021; Haywood et al., 2020), which would have promoted nutrient depletion below the surface and limited biological carbon export despite
365 high surface productivity.

During the mPWP, a sharp collapse in vertical $\delta^{13}\text{C}$ gradients during MIS KM2 is observed: $\Delta \delta^{13}\text{C}_{\text{BF-CO}}$ declines by –1.03 ‰ (**Fig. 2a**), and $\Delta \delta^{13}\text{C}_{\text{BF-PF}}$ by –0.89 ‰ (**Fig. 2b**), and $\Delta \delta^{13}\text{C}_{\text{PF-CO}}$ by –0.78 ‰ (**Fig. 2c**). These shifts indicate a breakdown in vertical carbon reservoir separation and suggest a pulse of enhanced ventilation, consistent with Northern Hemisphere
370 glaciation and global cooling events documented in other records (De Schepper et al., 2014; McClymont et al., 2023). In parallel, $\delta^{18}\text{O}$ gradients decline: the $\Delta \delta^{18}\text{O}_{\text{BF-CO}}$ decreases by –0.94 ‰ (equivalent to +4.05 °C warming; **Fig. 2e**), the benthic–planktic foraminifera $\delta^{18}\text{O}$ gradient ($\Delta \delta^{18}\text{O}_{\text{BF-PF}}$) by –0.60 ‰ (+2.59 °C warming; **Fig. 2f**), and the $\Delta \delta^{18}\text{O}_{\text{PF-CO}}$ by –0.33 ‰ (+1.43 °C warming; **Fig. 2g**), collectively pointing to surface and subsurface warming and a deepening of the thermocline. However, the *F. profunda* index declines during this period, supporting enhanced surface mixing, possibly from
375 lateral advection of nutrients carried by the East African Coastal Current (Tangunan et al., 2017), which may have supported sustained productivity and an increase in the upper photic species (**Fig. 1d**), despite an overall background of stratified conditions (Lawrence et al., 2006).

The rest of the mPWP saw amplified variability in $\Delta \delta^{13}\text{C}_{\text{BF-CO}}$ (**Fig. 2a**) and $\Delta \delta^{13}\text{C}_{\text{BF-PF}}$ (+0.78 ‰; **Fig. 2b**), indicating
380 enhanced coupling between surface and deep waters and a modest reinvigoration of the biological pump (Martínez-Méndez et al., 2010). This is also reflected in the *F. profunda* index (**Fig. 2b**), which displays high variability, signifying dynamic shifts in nutricline depth and surface ocean productivity. The $\Delta \delta^{18}\text{O}_{\text{BF-CO}}$ (**Fig. 2e**) shows pronounced variability, suggesting recurrent reorganisations of deep-water masses (e.g., Hodell and Venz-Curtis, 2006). Maxima in isotopic gradients for both $\Delta \delta^{18}\text{O}_{\text{BF-CO}}$ (**Fig. 2e**) and $\Delta \delta^{18}\text{O}_{\text{BF-PF}}$ (**Fig. 2f**) suggest strengthened vertical thermal gradients while minima in $\Delta \delta^{18}\text{O}_{\text{BF-CO}}$



385 **(Fig. 2e)** and $\Delta \delta^{18}\text{O}_{\text{PF-CO}}$ **(Fig. 2g)** point to episodes of upper-ocean warming or freshwater input likely linked to changes in
the precipitation-evaporation balance (Brierley and Fedorov, 2016). However, the planktic foraminifera record is a lower-
resolution archive relative to the coccolith and benthic foraminifera records, potentially limiting its fidelity in capturing
short-term $\delta^{13}\text{C}$ and $\delta^{18}\text{O}$ variability. These changes precede the intensification of Northern Hemisphere glaciation and may
signal the onset of more dynamic ocean circulation regimes (Lisiecki and Raymo, 2005), foreshadowing the Pleistocene
390 transition and the establishment of the Northern Hemisphere glaciation (~2.7 Ma).

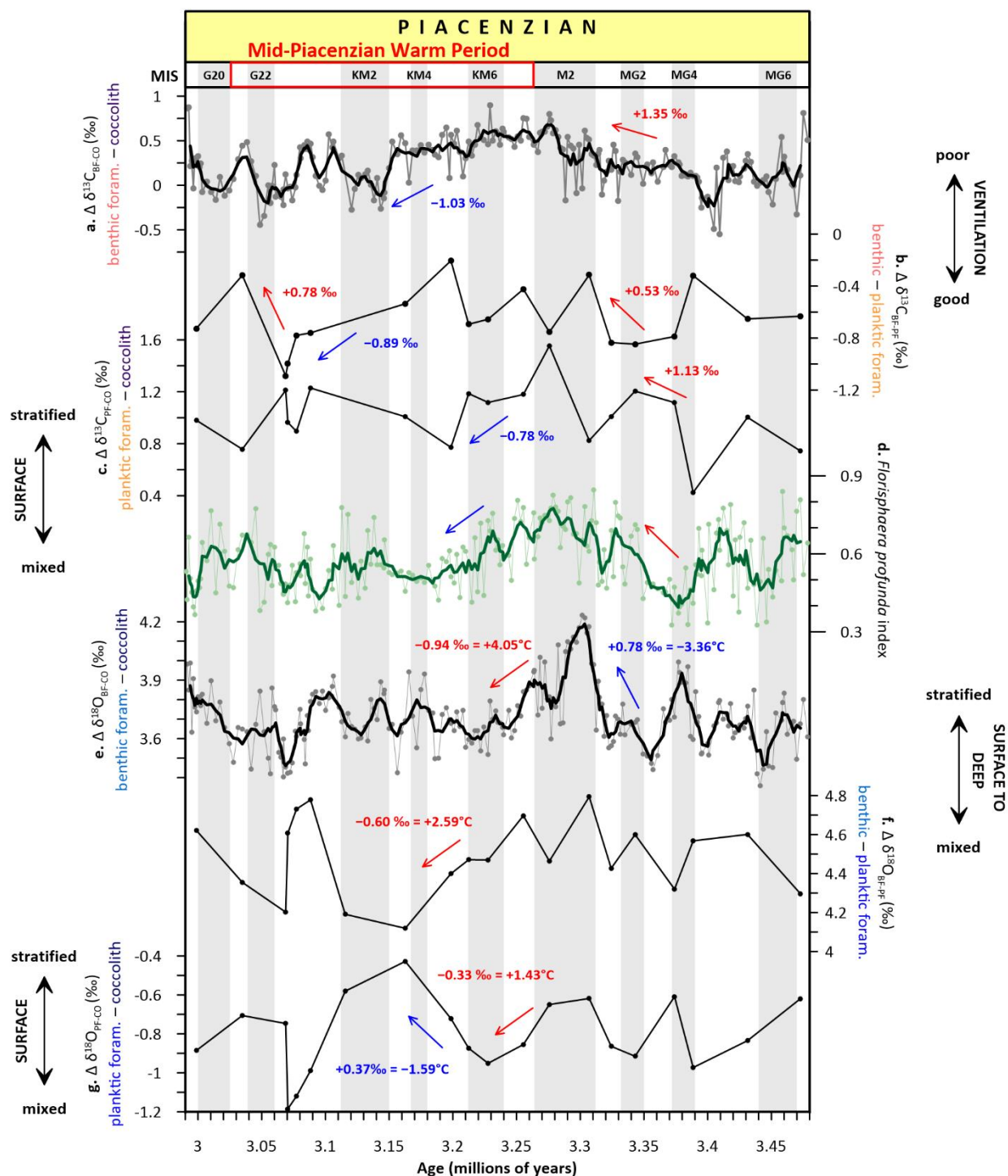




Figure 2: Carbon and oxygen isotopic gradients (Δ) at Site U1476. (a) benthic foraminifera (BF)–coccolith fraction (CO) $\delta^{13}\text{C}$, (b) benthic–planktic foraminifera (PF) $\delta^{13}\text{C}$, (c) coccolith fraction–planktic foraminifera $\delta^{13}\text{C}$, (d) *Florisphaera profunda* stratification index calculated as the ratio of the deep photic zone taxon *F. profunda* and the combined abundances of upper photic zone taxa: small *Gephyrocapsa*, small *Reticulofenestra*, and *Reticulofenestra* 3–5 μm , (e) benthic foraminifera–coccolith fraction $\delta^{18}\text{O}$, (f) benthic–planktic foraminifera $\delta^{18}\text{O}$, (g) planktic foraminifera–coccolith fraction $\delta^{18}\text{O}$. Labelled arrows highlight major long-term trends superimposed on glacial–interglacial variability. The red box highlights the mid-Piacenzian Warm Period, and glacial stages are shown by grey horizontal bars (Lisiecki and Raymo, 2005).

3.4 Orbital scale controls on Pliocene ocean-climate dynamics

While the Pliocene is often characterised as a climatically stable interval with globally elevated temperatures and moderate $p\text{CO}_2$ levels, recent studies underscore the pivotal role of orbital forcing in modulating both surface and deep ocean conditions during this epoch (e.g., De Schepper et al., 2014; McClymont et al., 2020). Variations in eccentricity, obliquity, and precession have been shown to exert strong control over insolation patterns, which in turn drive changes in ocean circulation, carbon storage, and ice sheet dynamics (Lisiecki and Raymo, 2005). Particularly during the mPWP, climate responses to orbital-scale forcing were regionally diverse and temporally complex, often mediated by ocean-atmosphere feedback and changes in the AMOC (e.g., Brierley et al., 2009; Fedorov et al., 2013). Here we examine the imprint of orbital pacing on $\delta^{13}\text{C}$ and $\delta^{18}\text{O}$ variability, revealing how eccentricity-modulated obliquity and precession rhythms governed the ventilation state of the deep ocean and the efficiency of surface–deep carbon exchange across the Piacenzian.

Our high-resolution coccolith and benthic foraminifera $\delta^{13}\text{C}$ and $\delta^{18}\text{O}$ records from IODP Site U1476 reveal distinct orbital pacing of water column structure during the Piacenzian (Fig. 3, 4). The $\delta^{13}\text{C}_{\text{BF}}$ record shows strong eccentricity (~ 100 kyr) variability (Fig. 3a–c), indicating that deep ocean carbon storage responded fundamentally to long-term orbital variations. This likely reflects eccentricity-modulated changes in Southern Ocean ventilation that altered the injection of ^{13}C -enriched waters into the deep Indian Ocean (Hodell and Venz-Curtis, 2006), coupled with potential variations in organic carbon burial efficiency (Sarmiento and Gruber, 2013). While eccentricity dominates the deep carbon cycle, obliquity (~ 41 kyr) exerts strong control on deep ocean temperature ($\delta^{18}\text{O}_{\text{BF}}$; Fig. 3d–f) and photic zone carbon cycling ($\delta^{13}\text{C}_{\text{CO}}$; Fig. 3g–i). This obliquity signal reflects the high-latitude forcing of Southern Ocean ventilation (Hodell and Venz-Curtis, 2006) and associated changes in Indian Ocean circulation (Biaostoch et al., 2009) (Fig. 4), consistent with the global benthic isotope stack (Lisiecki and Raymo, 2005).

Notably, precession (~ 19 – 23 kyr) dominates surface hydrography ($\delta^{18}\text{O}_{\text{CO}}$; Fig. 3j–l), especially prior to MIS M2 during eccentricity maxima, with peaks coinciding with summer insolation maxima at Site U1476 (15°S ; Fig. 4a) and the Southern Hemisphere (65°S), and the orbital precession expressed in the normalized ETP solution (Laskar et al., 2011; Fig. 4b). This tropical-subtropical response highlights the dual sensitivity of the Mozambique Channel to both high latitude forcing via



430 Southern Hemisphere westerlies (Toggweiler et al., 2006; Biastoch et al., 2009) and low latitude forcing via Indian monsoon
dynamics (Clemens et al., 1991) and the Indo-Pacific Walker Circulation (Van Der Lubbe et al., 2021). As a critical conduit
for Indian-Atlantic Ocean exchange (Beal et al., 2011), the region's stratification and carbon storage responded dynamically
to the interplay of these orbital forcings, driven by changes in the Southern Hemisphere westerlies (Biastoch et al., 2009),
Agulhas leakage (Schott et al., 2009; De Ruijter et al., 2002), and Indian-Atlantic circulation (De Ruijter et al., 2002; Beal et
al., 2011).

435

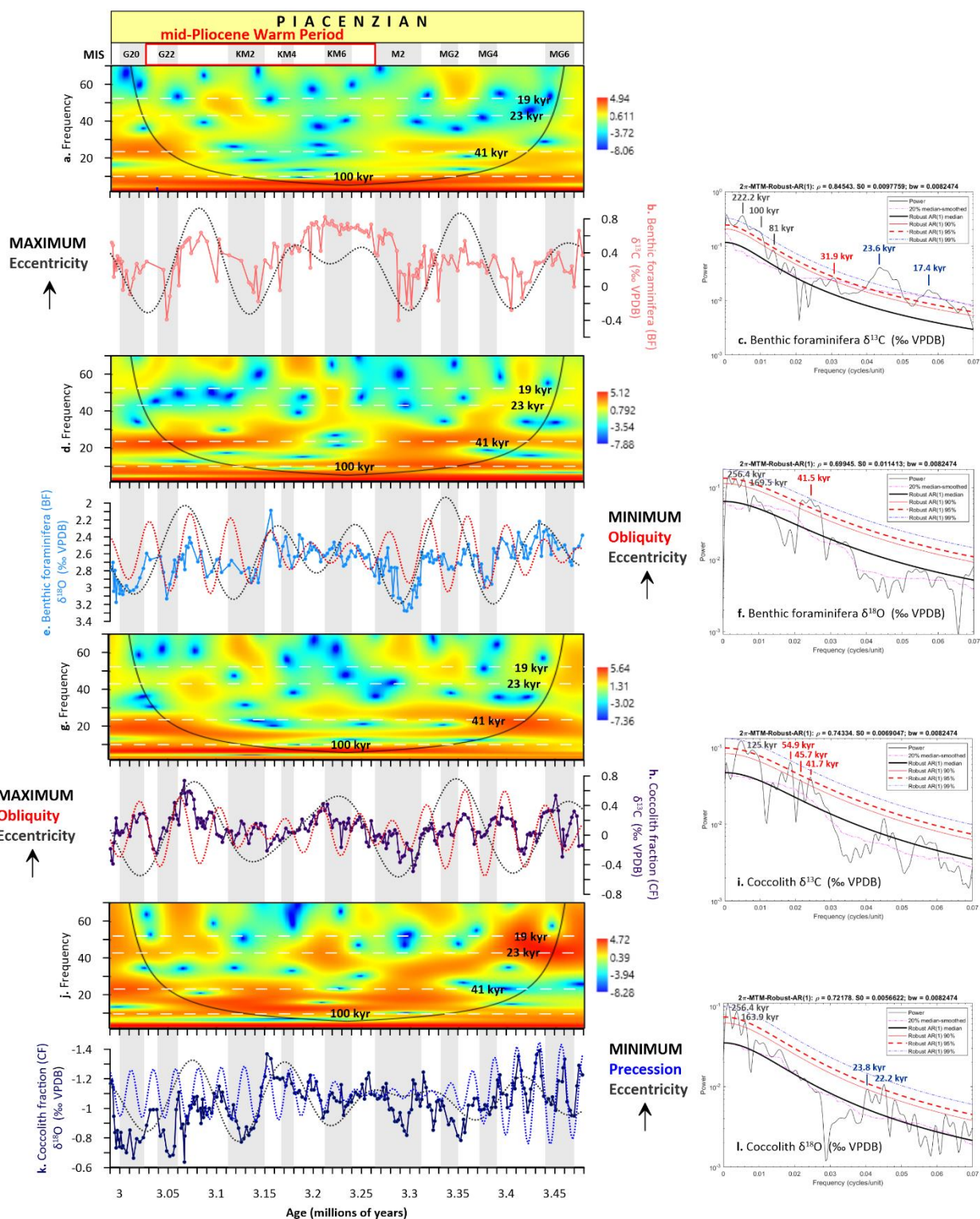




Figure 3: Bandpass filtering and wavelet analysis of carbon and oxygen isotope records at Site U1476. Benthic foraminifera $\delta^{13}\text{C}$ (a) wavelet power spectrum, (b) raw data with 100-kyr eccentricity filter, (c) multitaper method (MTM) power spectrum; benthic $\delta^{18}\text{O}$ (d) wavelet power spectrum, (e) raw data with 100-kyr and 41-kyr obliquity filters, (f) MTM power spectrum; fine fraction bulk coccolith $\delta^{13}\text{C}$ (<20 μm) (g) wavelet power spectrum, (h) raw data with 100-kyr and 41-kyr filters, (i) MTM power spectrum; fine fraction bulk coccolith $\delta^{18}\text{O}$ (<20 μm) (j) wavelet power spectrum, (k) raw data with 100-kyr and 19–23 kyr precession filters, (l) MTM power spectrum. Eccentricity = dotted black line, obliquity = dotted red line, precession = dotted blue line. The red box highlights the mid-Piacenzian Warm Period, and glacial stages are shown by grey horizontal bars (Lisiecki and Raymo, 2005).

445

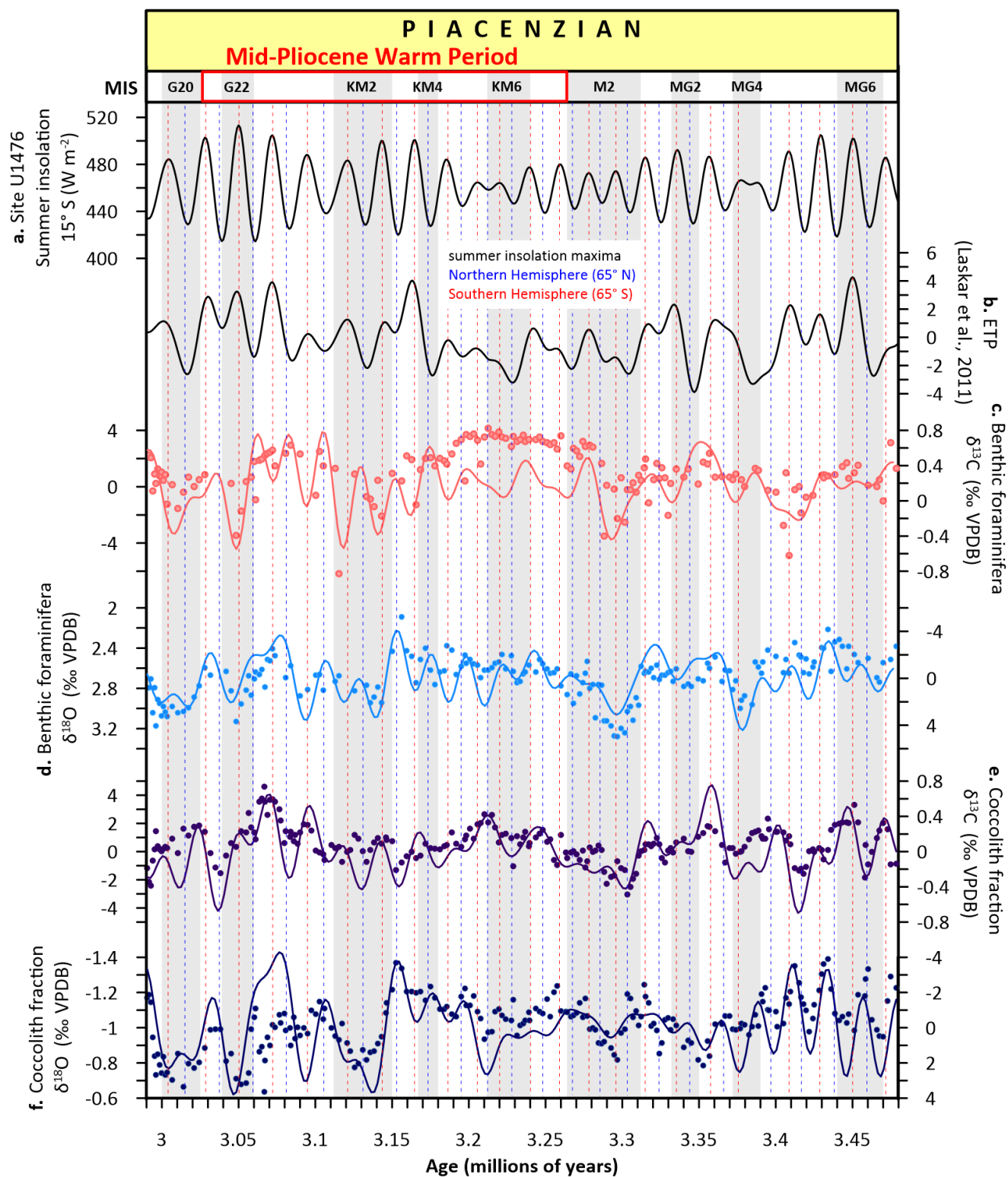




Figure 4: Astronomical climate parameters and carbon and oxygen stable isotope records from Site U1476 during the Piacenzian. (a) summer insolation at 15°S (Site U1476), (b) ETP (eccentricity, obliquity/tilt, precession (Laskar et al., 2011), (c) benthic foraminifera $\delta^{13}\text{C}$, (d) benthic foraminifera $\delta^{18}\text{O}$, (e) coccolith fraction $\delta^{13}\text{C}$, (f) coccolith fraction $\delta^{18}\text{O}$. Solid lines in c–f represent ETP-filtered isotopic data. Blue dotted lines mark the peaks in $\delta^{13}\text{C}$ and $\delta^{18}\text{O}$ aligned with the Northern Hemisphere (65° N) summer insolation maxima while the red dotted lines denote peaks coinciding with the Southern Hemisphere (65° S) summer insolation maxima. The red box highlights the mid-Piacenzian Warm Period, and glacial stages are shown by grey horizontal bars (Lisiecki and Raymo, 2005).

3.5 Regional feedback and global context in a warm, high CO_2 world

The co-variation of $\delta^{13}\text{C}$ and $\delta^{18}\text{O}$ records with reconstructed $p\text{CO}_2$ across the Piacenzian underscores a tightly coupled ocean-atmosphere carbon cycle and climate system in a warm, high- CO_2 world (**Fig. 5, Fig. S1d**). We compared our $\delta^{13}\text{C}$ and $\delta^{18}\text{O}$ records with the high-resolution $p\text{CO}_2$ reconstruction of de la Vega et al. (2020) at ODP Site 999 in the Caribbean Sea (12°44' N, 78°44' W; 2828 m water depth), ensuring that the age models used in both datasets are compatible to allow meaningful evaluation of the trends (**Fig. S1c–f**). Both benthic foraminifera and coccolith $\delta^{13}\text{C}$ and $\delta^{18}\text{O}$ records follow a generally similar trend to $p\text{CO}_2$, suggesting that carbon cycling and ocean temperatures were globally coherent and responsive to changes in $p\text{CO}_2$ levels. These empirical observations are broadly consistent with PlioMIP Phase 1 and Phase 2 model outputs, which simulate a warmer-than-modern global mean temperature of 2.7–4.0 °C under mid-Piacenzian boundary conditions with elevated CO_2 , and exhibit globally coherent patterns of surface warming and weakened meridional temperature gradients (Haywood et al., 2020; Haywood et al., 2007).

During the MIS M2 cool interval just prior to the mPWP, the early phase is characterised by a significant increase in $p\text{CO}_2$ (~420 ppm; **Fig. 5c**), which coincides with declining $\delta^{13}\text{C}_{\text{BF}}$ and $\delta^{13}\text{C}_{\text{CO}}$ values in both benthic foraminifera (**Fig. 5b**) and coccolithophores (**Fig. 5a**). This relationship likely reflects reduced surface ocean productivity and weakening of the biological pump due to enhanced stratification, resulting in decreased export of ^{13}C -enriched organic matter to the deep ocean (Hodell and Venz, 1992; Honisch et al., 2009). PlioMIP2 simulations similarly suggest that elevated CO_2 concentrations during the mPWP suppressed vertical ocean mixing and intensified upper ocean stratification, particularly in tropical and subtropical regions, thereby reinforcing a regional feedback that weakens biological carbon export (Zhang et al., 2021). In such conditions, increased CO_2 uptake into surface waters would also lower $\delta^{13}\text{C}$ in DIC, further contributing to the negative $\delta^{13}\text{C}$ excursion observed across taxa. The biological pump is expected to be sensitive to changes in both ocean stratification and plankton metabolic functioning (Rost and Riebesell, 2004). Elevated CO_2 can enhance ocean stratification, which tends to reduce nutrient supply to surface waters and potentially limit primary productivity, weakening the biological pump. However, at the organism level, CO_2 -induced changes in metabolic rates, particularly among calcifying phytoplankton, can also affect carbon export efficiency. Recent studies suggest that elevated CO_2 may increase metabolic activity in some taxa, influencing remineralisation depths and carbon sequestration pathways (Boscolo-Galazzo et al., 2021;



Crichton et al., 2023). The persistent vertical $\delta^{13}\text{C}$ gradients observed here likely reflect a balance between these competing processes, with a stratified yet biologically active upper ocean supporting effective carbon export to the deep sea despite elevated $p\text{CO}_2$ levels.

485 While the general co-variation between $\delta^{13}\text{C}$, $\delta^{18}\text{O}$, and $p\text{CO}_2$ is evident, there are notable deviations from this trend, particularly during MIS M2, where lags emerge between Site U1476 and ODP Site 999 records. In the early stages of MIS M2, reconstructed $p\text{CO}_2$ appears to lag behind the $\delta^{13}\text{C}_{\text{BF}}$ and $\delta^{13}\text{C}_{\text{CO}}$ minima, suggesting a delayed $p\text{CO}_2$ response to oceanographic and biological changes (**Fig. 5a–c**). Similarly, the $p\text{CO}_2$ shows a delayed increase relative to $\delta^{18}\text{O}_{\text{BF}}$ (**Fig. 5e**), whereas $\delta^{18}\text{O}_{\text{CO}}$ (**Fig. 5d**) aligns more closely with $p\text{CO}_2$ trends. This lag structure has been previously noted by de la Vega et al. (2020), suggesting a carbon cycle-based explanation, potentially linked to the dynamics of the Southern Ocean. Specifically, the tail end of the $p\text{CO}_2$ decline during MIS M2 appears to be out of phase with Northern Hemisphere insolation but more aligned with insolation changes at 65°S , offset by half a precession cycle, hinting at high-latitude control over CO_2 drawdown. The fact that North Atlantic ϵNd records exhibit similar phasing supports a deep-ocean ventilation mechanism (Lang et al., 2016). Our data from Site U1476 confirm that $\delta^{13}\text{C}$ values in both benthic foraminifera and coccolith records
490 also lag the $p\text{CO}_2$ inflexion point, consistent with this interpretation and reinforcing the notion that oceanic carbon reservoirs, particularly the deep ocean, responded more slowly to atmospheric forcing.

In the latter part of MIS M2, a notable decline in $p\text{CO}_2$ is accompanied by an increase in $\delta^{13}\text{C}$ values for both benthic and planktic records. However, the magnitude of this recovery is greater in benthic foraminifera (**Fig. 5b**). The stronger
500 amplitude in $\delta^{13}\text{C}_{\text{BF}}$ suggests a deep ocean response to increased ventilation and remineralised carbon drawdown, which may have lagged behind surface ocean reorganisation (Raymo et al., 1996). Meanwhile, $\delta^{13}\text{C}_{\text{CO}}$ values, while also increasing, exhibit a more modest recovery, consistent with a surface ocean that remained more sensitive to fluctuations in $p\text{CO}_2$ and biological productivity (Pagani et al., 2009). Following MIS M2, $\delta^{13}\text{C}_{\text{BF}}$ values remain relatively elevated throughout the mPWP (**Fig. 5b**). However, the persistently large $\delta^{13}\text{C}_{\text{BF-CO}}$ gradient (**Fig. 2a**) is consistent with model simulations showing
505 reduced deep ocean overturning and widespread deep-ocean warming, indicating limited vertical mixing and poor deep-water ventilation and likely the accumulation of ^{12}C -rich respired carbon in the deep ocean (Feng et al., 2020). In contrast, $\delta^{13}\text{C}_{\text{CO}}$ fluctuates more dynamically with $p\text{CO}_2$, implying that surface-ocean carbon cycling remained regionally variable and modulated by orbital-scale insolation changes (**Fig. 3i**), shifts in atmospheric circulation (e.g., wind-driven upwelling) (Beal et al., 2011), and variations in upper ocean stratification and nutrient delivery linked to ocean circulation patterns. This
510 divergence between surface and deep-ocean carbon signals during the warm interval highlights the regional imprint of biogeochemical processes on globally integrated carbon reservoirs.

A parallel pattern is evident in the $\delta^{18}\text{O}$ records, where peaks in $p\text{CO}_2$ (**Fig. 5e**) consistently align with more negative $\delta^{18}\text{O}$ values in both benthic foraminifera (**Fig. 5e**) and coccoliths (**Fig. 5d**), indicating episodes of ocean warming. Given that $\delta^{18}\text{O}$



515 incorporates both temperature and global ice volume influences, the observed minima during $p\text{CO}_2$ peaks support
interpretations of reduced global ice volume and increased SSTs during warm climate states (Lisiecki and Raymo, 2005).
The synchronicity between $p\text{CO}_2$ maxima and $\delta^{18}\text{O}$ minima, especially in surface-dwelling coccoliths, underscores the
sensitivity of upper ocean layers to rapid greenhouse gas forcing. These $\delta^{18}\text{O}_{\text{CO}}$ signals likely reflect immediate atmospheric–
oceanic feedback, including enhanced stratification and reduced vertical mixing. Notably, in the modern western Indian
520 Ocean, where Site U1476 is located, there is a near-equilibrium between the surface ocean and $p\text{CO}_2$, resulting in a minimal
net air–sea CO_2 flux (Guo and Timmermans, 2024; Takahashi et al., 2009). This quasi-equilibrium condition highlights the
tight coupling between the ocean and atmosphere in the region. It illustrates how modern dynamics can inform the
interpretation that $\delta^{18}\text{O}_{\text{CO}}$ variations at U1476 in the Pliocene were closely tied to greenhouse gas-driven changes in upper
ocean structure and carbon exchange.

525 Similarly, $\delta^{18}\text{O}_{\text{BF}}$ values exhibit broadly synchronous trends that track $p\text{CO}_2$ variability (**Fig. 5e**), highlighting the strong
climatic imprint of greenhouse forcing across the water column. However, $\delta^{18}\text{O}_{\text{BF}}$ values respond to combined eccentricity
and obliquity pacing (**Fig. 3f**), consistent with the slower response times and thermal inertia of the deep ocean (Lisiecki and
Raymo, 2005), whereas $\delta^{18}\text{O}_{\text{CO}}$ values are more strongly modulated by eccentricity (**Fig. 3l**), reflecting surface-layer
530 sensitivity to insolation-driven changes in upper ocean stratification and temperature (**Fig. 4**). This further suggests that
while global SST patterns and ice volume were primarily paced by orbital forcing, regional responses, particularly in the
Indian Ocean, were strongly influenced by feedbacks involving ocean dynamics, heat redistribution, and atmospheric
circulation (Dowsett et al., 2016; Dowsett et al., 2013). Findings from this study therefore highlight the need for higher-
resolution spatial and temporal integration of proxy data with model simulations, underscoring the importance of tropical
535 basins in modulating global climate-carbon feedback mechanisms during past and potentially future warm climates.

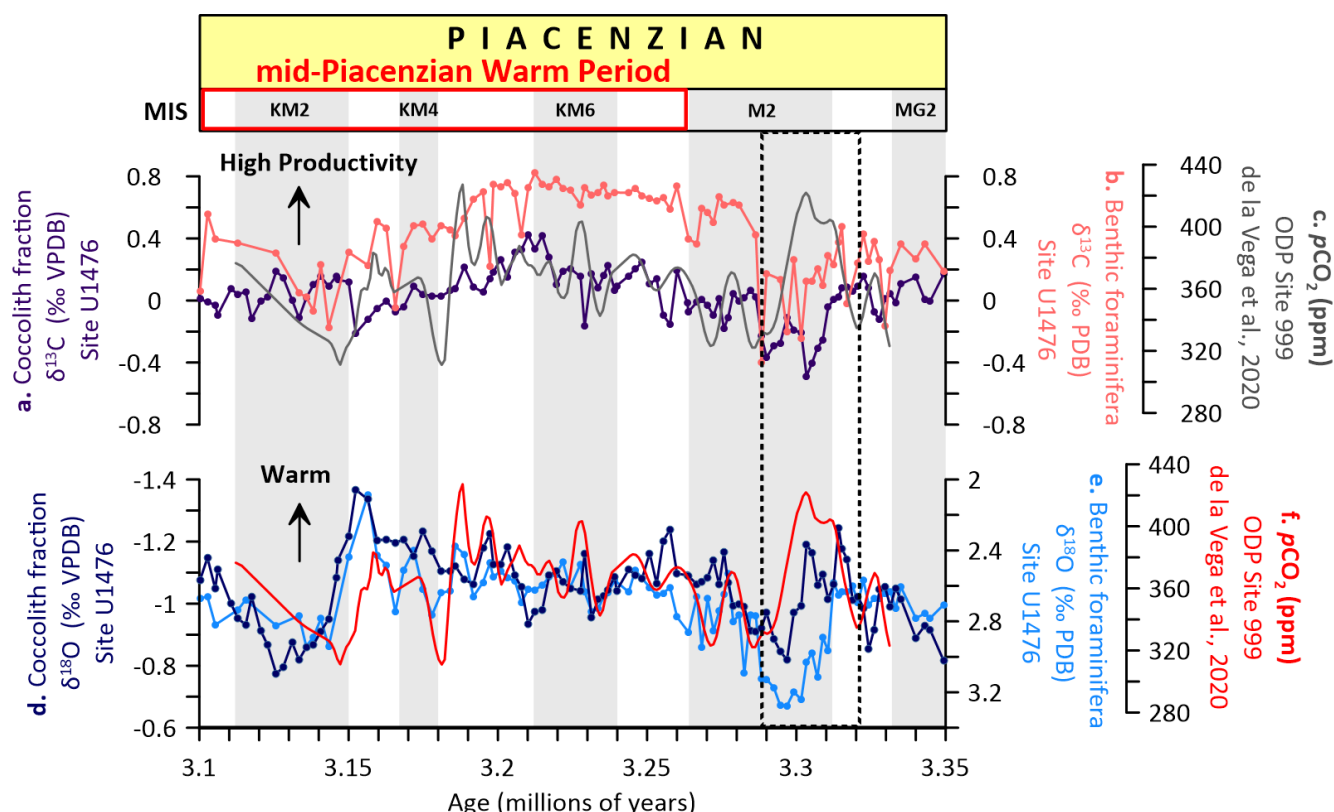


Figure 5. Carbon and oxygen isotopes and atmospheric CO_2 ($p\text{CO}_2$) across the mid-Piacenzian Warm Period (mPWP) at Site U1476. (a) bulk coccolith $\delta^{13}\text{C}$, (b) benthic foraminifera $\delta^{13}\text{C}$, (c) $p\text{CO}_2$ (de la Vega et al., 2020), (d) bulk coccolith $\delta^{18}\text{O}$, (e) benthic foraminiferal $\delta^{18}\text{O}$. The red box highlights the mid-Piacenzian Warm Period, and glacial stages are shown by grey horizontal bars (Lisiecki and Raymo, 2005).

4 Conclusions

This study presents the first high-resolution $\delta^{13}\text{C}$ and $\delta^{18}\text{O}$ records from coccoliths and benthic foraminifera, along with low-resolution planktic foraminifera record spanning the Piacenzian at Site U1476, offering a vertically resolved reconstruction of upper ocean stratification and carbon cycling in the western tropical Indian Ocean. Persistent vertical isotopic gradients indicate a thermally stratified upper ocean and an active, yet potentially nutrient-limited, biological pump. Distinct isotopic offsets between the *F. profunda*-dominated coccolithophore assemblage and *G. ruber* support photic zone niche partitioning and reveal the influence of deep-photoc coccolithophores in biasing bulk isotopic signals, underscoring the need for taxon-specific reconstructions.



We demonstrate that high surface productivity during the mPWP did not imply efficient carbon export, as stratification likely inhibited nutrient resupply. The MIS M2 glacial event marks a transient collapse of stratification, highlighting the sensitivity of upper ocean structure and carbon sequestration to climate perturbations. Obliquity-paced variability in $\delta^{13}\text{C}$ and $\delta^{18}\text{O}$ records further links high-latitude orbital forcing to low-latitude stratification and export dynamics. The muted but coherent benthic response suggests deep-sea carbon cycling lagged behind surface processes, with implications for the timing of global carbon storage. These results establish the tropical Indian Ocean as an active node in global carbon cycling during the mPWP, providing new constraints on ocean–atmosphere feedback relevant to future high- $p\text{CO}_2$ scenarios.

Data availability

All datasets generated in this study will be made publicly available via Zenodo upon publication. These include coccolith datasets comprising abundance, CaCO_3 content, mass, and stable isotope measurements ($\delta^{13}\text{C}$ and $\delta^{18}\text{O}$) (DOIs: 10.5281/zenodo.16043100, 10.5281/zenodo.16043901, 10.5281/zenodo.16044409, 10.5281/zenodo.16044839), as well as planktic and benthic foraminifera stable isotope data ($\delta^{13}\text{C}$ and $\delta^{18}\text{O}$) (DOIs: 10.5281/zenodo.16045236 and 10.5281/zenodo.16045489, respectively).

Author contribution

DNT and IRH led the conceptualization of the study with input from LB and MAB. Formal analysis was conducted by DNT and LB. DNT acquired funding and administered the project with IRH. IRH provided supervision and, together with DNT, contributed resources for the study. Data visualization was done by DNT. DNT wrote the original draft, and all authors (DNT, IRH, LB, MAB, AN, and PRB) contributed to the review and editing of the manuscript.

Competing interests

LB is a member of the Editorial Board of *Climate of the Past*. The authors declare that they have no other competing interests.

Acknowledgments

This research used samples and data provided by IODP. We are thankful for the support from the scientific and technical crew of the R/V JOIDES Resolution IODP Expedition 361 and the IODP staff. This work is funded by the European Union's



Horizon 2020 research and innovation programme under the Marie Skłodowska-Curie grant agreement No. 885498 awarded to DNT.

References

- Andersson, C., Warnke, D. A., Channell, J. E. T., Stoner, J., and Jansen, E.: The mid-Pliocene (4.3–2.6 Ma) benthic stable isotope record of the Southern Ocean: ODP Sites 1092 and 704, Meteor Rise, Palaeogeography, Palaeoclimatology, Palaeoecology, 182, 165–181, 10.1016/s0031-0182(01)00494-1, 2002.
- Bartoli, G., Hönsisch, B., and Zeebe, R. E.: Atmospheric CO₂ decline during the Pliocene intensification of Northern Hemisphere glaciations, Paleoceanography, 26, 10.1029/2010pa002055, 2011.
- Beal, L. M., Ruijter, W. P. M. D., Biastoch, A., Zahn, R., and 136, S. W. I. W. G.: On the role of the Agulhas system in ocean circulation and climate, Nature, 472, 429–436, doi:10.1038/nature09983, 2011.
- Beaufort, L., Barbarin, N., and Gally, Y.: Optical measurements to determine the thickness of calcite crystals and the mass of thin carbonate particles such as coccoliths, Nature protocols, 9, 633–642 %@ 1754–2189, 2014.
- Beaufort, L., de Garidel-Thoron, T., Mix, A. C., and Pisias, N. G.: ENSO-like forcing on oceanic primary production during the Late Pleistocene, Science, 293, 2440–2444, 10.1126/science.293.5539.2440, 2001.
- Beaufort, L., Lancelot, Y., Camberlin, P. C., O., Vincent, E., Bassinot, F. C., and Labeyrie, L.: Insolation cycles as a major control of equatorial Indian Ocean primary production, 10.1126/science.278.5342.1451, 1997.
- Bell, D. B., Jung, S. J., Kroon, D., Hodell, D. A., Lourens, L. J., and Raymo, M. E.: Atlantic Deep-water Response to the Early Pliocene Shoaling of the Central American Seaway, Sci Rep, 5, 12252, 10.1038/srep12252, 2015.
- Biastoch, A., Böning, C. W., Schwarzkopf, F. U., and Lutjeharms, J.: Increase in Agulhas leakage due to poleward shift of Southern Hemisphere westerlies, Nature, 462, 495–498, 2009.
- Bijma, J., Spero, H. J., and Lea, D. W.: Reassessing Foraminiferal Stable Isotope Geochemistry: Impact of the Oceanic Carbonate System (Experimental Results), in: Use of Proxies in Paleoceanography, 489–512, 10.1007/978-3-642-58646-0_20, 1999.
- Bolton, C. T., Stoll, H. M., and Mendez-Vicente, A.: Vital effects in coccolith calcite: Cenozoic climate-pCO₂drove the diversity of carbon acquisition strategies in coccolithophores?, Paleoceanography, 27, 10.1029/2012pa002339, 2012.
- Boscolo-Galazzo, F., Crichton, K. A., Ridgwell, A., Mawbey, E. M., Wade, B. S., and Pearson, P. N.: Temperature controls carbon cycling and biological evolution in the ocean twilight zone, Science, 371, 1148–1152, 10.1126/science.abb6643, 2021.
- Braaten, A. H., Jakob, K. A., Ho, S. L., Friedrich, O., Galaasen, E. V., De Schepper, S., Wilson, P. A., and Meckler, A. N.: Limited exchange between the deep Pacific and Atlantic oceans during the warm mid-Pliocene and Marine Isotope Stage M2 “glaciation”, Climate of the Past, 19, 2109–2125, 10.5194/cp-19-2109-2023, 2023.



- Brierley, C. M. and Fedorov, A. V.: Comparing the impacts of Miocene–Pliocene changes in inter-ocean gateways on climate: Central American Seaway, Bering Strait, and Indonesia, *Earth and Planetary Science Letters*, 444, 116–130, 10.1016/j.epsl.2016.03.010, 2016.
- 615 Brierley, C. M., Fedorov, A. V., Liu, Z., Herbert, T. D., Lawrence, K. T., and Lariviere, J. P.: Greatly expanded tropical warm pool and weakened Hadley circulation in the early Pliocene, *Science*, 323, 1714–1718, 10.1126/science.1167625, 2009.
- Broecker, W. S. and Maier-Reimer, E.: The influence of air and sea exchange on the carbon isotope distribution in the sea, *Global Biogeochemical Cycles*, 6, 315–320, 10.1029/92gb01672, 2012.
- 620 Chandan, D. and Peltier, W. R.: On the mechanisms of warming the mid-Pliocene and the inference of a hierarchy of climate sensitivities with relevance to the understanding of climate futures, *Climate of the Past*, 14, 825–856, 10.5194/cp-14-825-2018, 2018.
- Clemens, S., Prell, W., Murray, D., Shimmield, G., and Weedon, G.: Forcing Mechanisms of the Indian-Ocean Monsoon, 10.1038/353720a0, 1991.
- 625 Crichton, K. A., Wilson, J. D., Ridgwell, A., Boscolo-Galazzo, F., John, E. H., Wade, B. S., and Pearson, P. N.: What the geological past can tell us about the future of the ocean's twilight zone, *Nat Commun*, 14, 2376, 10.1038/s41467-023-37781-6, 2023.
- de Boer, B., Stocchi, P., and van de Wal, R. S. W.: A fully coupled 3-D ice-sheet–sea-level model: algorithm and applications, *Geoscientific Model Development*, 7, 2141–2156, 10.5194/gmd-7-2141-2014, 2014.
- 630 de la Vega, E., Chalk, T. B., Wilson, P. A., Bysani, R. P., and Foster, G. L.: Atmospheric CO₂ during the Mid-Piacenzian Warm Period and the M2 glaciation, *Sci Rep*, 10, 11002, 10.1038/s41598-020-67154-8, 2020.
- de Ruijter, W. P. M., Ridderinkhof, H., Lutjeharms, J. R. E., Schouten, M. W., and Veth, C.: Observations of the flow in the Mozambique Channel, *Geophysical Research Letters*, 29, 10.1029/2001gl013714, 2002.
- De Schepper, S., Head, M. J., and Groeneveld, J.: North Atlantic Current variability through marine isotope stage M2 (circa 3.3 Ma) during the mid-Pliocene, *Paleoceanography*, 24, 10.1029/2008pa001725, 2009.
- 635 De Schepper, S., Gibbard, P. L., Salzmann, U., and Ehlers, J.: A global synthesis of the marine and terrestrial evidence for glaciation during the Pliocene Epoch, *Earth-Science Reviews*, 135, 83–102, 10.1016/j.earscirev.2014.04.003, 2014.
- Dolan, A. M., Haywood, A. M., Hill, D. J., Dowsett, H. J., Hunter, S. J., Lunt, D. J., and Pickering, S. J.: Sensitivity of Pliocene ice sheets to orbital forcing, *Palaeogeography, Palaeoclimatology, Palaeoecology*, 309, 98–110, 10.1016/j.palaeo.2011.03.030, 2011.
- 640 Dolan, A. M., Haywood, A. M., Hunter, S. J., Tindall, J. C., Dowsett, H. J., Hill, D. J., and Pickering, S. J.: Modelling the enigmatic Late Pliocene Glacial Event — Marine Isotope Stage M2, *Global Planet Change*, 128, 47–60, 10.1016/j.gloplacha.2015.02.001, 2015.
- Dowsett, H., Dolan, A., Rowley, D., Moucha, R., Forte, A. M., Mitrovica, J. X., Pound, M., Salzmann, U., Robinson, M., Chandler, M., Foley, K., and Haywood, A.: The PRISM4 (mid-Piacenzian) paleoenvironmental reconstruction, *Climate of the Past*, 12, 1519–1538, 10.5194/cp-12-1519-2016, 2016.
- 645



- Dowsett, H. J., Foley, K. M., Stoll, D. K., Chandler, M. A., Sohl, L. E., Bentsen, M., Otto-Bliesner, B. L., Bragg, F. J., Chan, W. L., Contoux, C., Dolan, A. M., Haywood, A. M., Jonas, J. A., Jost, A., Kamae, Y., Lohmann, G., Lunt, D. J., Nisancioglu, K. H., Abe-Ouchi, A., Ramstein, G., Riesselman, C. R., Robinson, M. M., Rosenbloom, N. A., Salzmann, U., Stepanek, C., Strother, S. L., Ueda, H., Yan, Q., and Zhang, Z.: Sea surface temperature of the mid-Piacenzian ocean: a data-model comparison, *Sci Rep*, 3, 2013, 10.1038/srep02013, 2013.
- Dupont, L. M., Donner, B., Vidal, L., Pérez, E. M., and Wefer, G.: Linking desert evolution and coastal upwelling: Pliocene climate change in Namibia, *Geology*, 33, 10.1130/g21401.1, 2005.
- Faul, K. L., Ravelo, C., and Delaney, M. L.: Reconstructions of Upwelling, Productivity, and Photic Zone Depth in the Eastern Equatorial Pacific Ocean Using Planktonic Foraminiferal Stable Isotopes and Abundances, *The Journal of Foraminiferal Research*, 30, 110-125, 10.2113/0300110, 2000.
- Fedorov, A. V., Brierley, C. M., Lawrence, K. T., Liu, Z., Dekens, P. S., and Ravelo, A. C.: Patterns and mechanisms of early Pliocene warmth, *Nature*, 496, 43-49, 10.1038/nature12003, 2013.
- Feng, R., Otto-Bliesner, B. L., Brady, E. C., and Rosenbloom, N.: Increased Climate Response and Earth System Sensitivity From CCSM4 to CESM2 in Mid-Pliocene Simulations, *Journal of Advances in Modeling Earth Systems*, 12, 10.1029/2019ms002033, 2020.
- Ford, H. L., Burls, N. J., Jacobs, P., Jahn, A., Caballero-Gill, R. P., Hodell, D. A., and Fedorov, A. V.: Sustained mid-Pliocene warmth led to deep water formation in the North Pacific, *Nature Geoscience*, 15, 658-663, 10.1038/s41561-022-00978-3, 2022.
- Guo, Y. and Timmermans, M. L.: The Role of Ocean Mesoscale Variability in Air-Sea CO₂ Exchange: A Global Perspective, *Geophysical Research Letters*, 51, 10.1029/2024gl108373, 2024.
- Hall, I. R., Hemming, S. R., LeVay, L. J., Barker, S., Berke, M. A., Brentegani, L., Caley, T., Cartagena-Sierra, A., Charles, C. D., Coenen, J. J., Crespin, J. G., Franzese, A. M., Gruetzner, J., Han, X., Hines, S. K. V., Jimenez Espejo, F. J., Just, J., Koutsodendris, A., Kubota, K., Lathika, N., Norris, R. D., Periera dos Santos, T., Robinson, R., Rolinson, J. M., Simon, M., Tanguan, D., van der Lubbe, J. J. L., Yamane, M., and Zhang, H.: Site U1476, in: *South African Climates (Agulhas LGM Density Profile)*, edited by: Hall, I. R., Hemming, S. R., LeVay, L. J., and the Expedition 361 Scientists, International Ocean Discovery Program, College Station, TX doi:10.14379/iodp.proc.361.105.2017, 2017.
- Hammer, Ø., Harper, D., and Ryan, P.: PAST-Palaeontological STatistics, ver. 1.89, 2009.
- Haywood, A. M., Valdes, P. J., Hill, D. J., and Williams, M.: The mid-Pliocene warm period: A test-bed for integrating, Deep-time perspectives on climate change: marrying the signal from computer models and biological proxies, 443 %@ 1862392404, 2007.
- Haywood, A. M., Tindall, J. C., Dowsett, H. J., Dolan, A. M., Foley, K. M., Hunter, S. J., Hill, D. J., Chan, W.-L., Abe-Ouchi, A., and Stepanek, C.: The Pliocene Model Intercomparison Project Phase 2: large-scale climate features and climate sensitivity, *Climate of the Past*, 16, 2095-2123 %@ 1814-9324, 2020.



- 680 Herbert, T. D., Lawrence, K. T., Tzanova, A., Peterson, L. C., Caballero-Gill, R., and Kelly, C. S.: Late Miocene global cooling and the rise of modern ecosystems, *Nature Geoscience*, 9, 843-847, 10.1038/ngeo2813, 2016.
- Hermoso, M., Godbillot, C., and Minoletti, F.: Enhancing Our Palaeoceanographic Toolbox Using Paired Foraminiferal and Cocolith Calcite Measurements From Pelagic Sequences, *Frontiers in Earth Science*, 8, 10.3389/feart.2020.00038, 2020.
- Hermoso, M., Chan, I. Z. X., McClelland, H. L. O., Heures, A. M. C., and Rickaby, R. E. M.: Vanishing coccolith vital
685 effects with alleviated carbon limitation, *Biogeosciences*, 13, 301-312, 10.5194/bg-13-301-2016, 2016.
- Hodell, D. A. and Venz-Curtis, K. A.: Late Neogene history of deepwater ventilation in the Southern Ocean, *Geochemistry, Geophysics, Geosystems*, 7, 10.1029/2005gc001211, 2006.
- Hodell, D. A. and Venz, K.: Toward a High-Resolution Stable Isotopic Record of the Southern Ocean During the Pliocene-Pleistocene (4.8 to 0.8 MA), <https://doi.org/10.1029/AR056p0265>, 1992.
- 690 Honisch, B., Hemming, N. G., Archer, D., Siddall, M., and McManus, J. F.: Atmospheric carbon dioxide concentration across the mid-Pleistocene transition, *Science*, 324, 1551-1554, 10.1126/science.1171477, 2009.
- Howell, F. W., Haywood, A. M., Dolan, A. M., Dowsett, H. J., Francis, J. E., Hill, D. J., Pickering, S. J., Pope, J. O., Salzmann, U., and Wade, B. S.: Can uncertainties in sea ice albedo reconcile patterns of data-model discord for the Pliocene and 20th/21st centuries?, *Geophysical Research Letters*, 41, 2011-2018, 10.1002/2013gl058872, 2014.
- 695 IPCC, I. P. o. C. C. (Ed.) Contribution of Working Group II to the Sixth Assessment Report of the Intergovernmental Panel on Climate Change, IPCC: Climate Change 2022: Impacts, Adaptation, and Vulnerability, Cambridge University Press, Cambridge University Press, Cambridge, UK and New York, NY, USA, 3056 pp., <https://doi.org/10.1017/9781009325844>, 2023.
- Jonkers, L. and Kučera, M.: Quantifying the effect of seasonal and vertical habitat tracking on planktonic foraminifera
700 proxies, *Climate of the Past*, 13, 573-586, 10.5194/cp-13-573-2017, 2017.
- Karas, C., Nürnberg, D., Gupta, A. K., Tiedemann, R., Mohan, K., and Bickert, T.: Mid-Pliocene climate change amplified by a switch in Indonesian subsurface throughflow, *Nature Geoscience*, 2, 434-438, 10.1038/ngeo520, 2009.
- Kotov, S. and Pälke, H.: QAnalySeries – a cross-platform time series tuning and analysis tool,
- Kroopnick, P. M.: The distribution of ^{13}C of ΣCO_2 in the world oceans, *Deep Sea Research Part A. Oceanographic Research*
705 *Papers*, 32, 57-84, 10.1016/0198-0149(85)90017-2, 1985.
- Lang, D. C., Bailey, I., Wilson, P. A., Chalk, T. B., Foster, G. L., and Gutjahr, M.: Incursions of southern-sourced water into the deep North Atlantic during late Pliocene glacial intensification, *Nature Geoscience*, 9, 375-379, 10.1038/ngeo2688, 2016.
- Larina, E., Woodhouse, A., Swain, A., Lowery, C. M., Martindale, R. C., and Myers, C. E.: Regional restructuring in planktic foraminifera communities through Pliocene-early Pleistocene climate variability, *Nat Commun*, 16, 5056, 10.1038/s41467-
710 025-60362-8, 2025.
- Laskar, J., Fienga, A., Gastineau, M., and Manche, H.: La2010: a new orbital solution for the long-term motion of the Earth, *Astronomy and Astrophysics*, 532, 15, 2011.



- Lawrence, K. T., Liu, Z., and Herbert, T. D.: Evolution of the eastern tropical Pacific through Plio-Pleistocene glaciation, *Science*, 312, 79-83, 10.1126/science.1120395, 2006.
- 715 Li, M., Hinnov, L., and Kump, L.: Acycle: Time-series analysis software for paleoclimate research and education, *Comput Geosci-Uk*, 127, 12-22, 10.1016/j.cageo.2019.02.011, 2019.
- Lisiecki, L. E. and Raymo, M. E.: A Pliocene-Pleistocene stack of 57 globally distributed benthic $\delta^{18}\text{O}$ records, *Paleoceanography*, 20, 10.1029/2004pa001071, 2005.
- Martínez-Méndez, G., Zahn, R., Hall, I. R., Peeters, F. J. C., Pena, L. D., Cacho, I., and Negre, C.: Contrasting multiproxy
720 reconstructions of surface ocean hydrography in the Agulhas Corridor and implications for the Agulhas Leakage during the last 345,000 years, *Paleoceanography*, 25, 10.1029/2009pa001879, 2010.
- McClymont, E. L., Ho, S. L., Ford, H. L., Bailey, I., Berke, M. A., Bolton, C. T., De Schepper, S., Grant, G. R., Groeneveld, J., Inglis, G. N., Karas, C., Patterson, M. O., Swann, G. E. A., Thirumalai, K., White, S. M., Alonso-Garcia, M., Anand, P., Hoogakker, B. A. A., Littler, K., Petrick, B. F., Risebrobakken, B., Abell, J. T., Crocker, A. J., de Graaf, F., Feakins, S. J.,
725 Hargreaves, J. C., Jones, C. L., Markowska, M., Ratnayake, A. S., Stepanek, C., and Tanguan, D.: Climate Evolution Through the Onset and Intensification of Northern Hemisphere Glaciation, *Reviews of Geophysics*, 61, 10.1029/2022rg000793, 2023.
- McClymont, E. L., Ford, H. L., Ho, S. L., Tindall, J. C., Haywood, A. M., Alonso-Garcia, M., Bailey, I., Berke, M. A., Littler, K., Patterson, M. O., Petrick, B., Peterse, F., Ravelo, A. C., Risebrobakken, B., De Schepper, S., Swann, G. E. A.,
730 Thirumalai, K., Tierney, J. E., van der Weijst, C., White, S., Abe-Ouchi, A., Baatsen, M. L. J., Brady, E. C., Chan, W.-L., Chandan, D., Feng, R., Guo, C., von der Heydt, A. S., Hunter, S., Li, X., Lohmann, G., Nisancioglu, K. H., Otto-Bliesner, B. L., Peltier, W. R., Stepanek, C., and Zhang, Z.: Lessons from a high- CO_2 world: an ocean view from ~3 million years ago, *Climate of the Past*, 16, 1599-1615, 10.5194/cp-16-1599-2020, 2020.
- Meyers, S.: *Astrochron: An R package for astrochronology*, 2014.
- 735 Mohtadi, M., Oppo, D. W., Lückge, A., DePol-Holz, R., Steinke, S., Groeneveld, J., Hemme, N., and Hebbeln, D.: Reconstructing the thermal structure of the upper ocean: Insights from planktic foraminifera shell chemistry and alkenones in modern sediments of the tropical eastern Indian Ocean, *Paleoceanography*, 26, 10.1029/2011pa002132, 2011.
- Molfinio, B. and McIntyre, A.: Precessional forcing of nutricline dynamics in the equatorial atlantic, 10.1126/science.249.4970.766, 1990.
- 740 Novak, J. B., Caballero-Gill, R. P., Rose, R. M., Herbert, T. D., and Dowsett, H. J.: Isotopic evidence against North Pacific Deep Water formation during late Pliocene warmth, *Nature Geoscience*, 17, 795-802, 10.1038/s41561-024-01500-7, 2024.
- Pagani, M., Liu, Z., LaRiviere, J., and Ravelo, A. C.: High Earth-system climate sensitivity determined from Pliocene carbon dioxide concentrations, *Nature Geoscience*, 3, 27-30, 10.1038/ngeo724, 2009.
- Poulton, A. J., Holligan, P. M., Charalampopoulou, A., and Adey, T. R.: Coccolithophore ecology in the tropical and
745 subtropical Atlantic Ocean: New perspectives from the Atlantic meridional transect (AMT) programme, *Progress in Oceanography*, 158, 150-170, 10.1016/j.pocean.2017.01.003, 2017.



- Raymo, M. E., Grant, B., Horowitz, M., and Rau, G. H.: Mid-Pliocene warmth: stronger greenhouse and stronger conveyor, *Marine Micropaleontology*, 27, 313-326, 10.1016/0377-8398(95)00048-8, 1996.
- Rost, B. and Riebesell, U.: Coccolithophores and the biological pump: Responses to environmental changes, *Coccolithophores: From Molecular Processes to Global Impact*, 99-125, 2004.
- 750 Salzmann, U., Williams, M., Haywood, A. M., Johnson, A. L. A., Kender, S., and Zalasiewicz, J.: Climate and environment of a Pliocene warm world, *Palaeogeography, Palaeoclimatology, Palaeoecology*, 309, 1-8, 10.1016/j.palaeo.2011.05.044, 2011.
- Saraswat, R., Suokhrie, T., Naik, D. K., Singh, D. P., Saalim, S. M., Salman, M., Kumar, G., Bhadra, S. R., Mohtadi, M., Kurtarkar, S. R., and Maurya, A. S.: Large freshwater-influx-induced salinity gradient and diagenetic changes in the northern Indian Ocean dominate the stable oxygen isotopic variation in *Globigerinoides ruber*, *Earth System Science Data*, 15, 171-187, 10.5194/essd-15-171-2023, 2023.
- 755 Sarmiento, J. L. and Gruber, N.: *Ocean Biogeochemical Dynamics*, 10.2307/j.ctt3fgxqx, 2013.
- Schott, F. A., Xie, S. P., and McCreary, J. P.: Indian Ocean circulation and climate variability, 10.1029/2007rg000245, 2009.
- 760 Schouten, M. W., de Ruijter, W. P. M., van Leeuwen, P. J., and Ridderinkhof, H.: Eddies and variability in the Mozambique Channel, 10.1016/S0967-0645(03)00042-0, 2003.
- Seki, O., Foster, G. L., Schmidt, D. N., Mackensen, A., Kawamura, K., and Pancost, R. D.: Alkenone and boron-based Pliocene pCO₂ records, *Earth and Planetary Science Letters*, 292, 201-211, 10.1016/j.epsl.2010.01.037, 2010.
- Shackleton, N. J. and Opdyke, N. D.: Oxygen Isotope and Palaeomagnetic Stratigraphy of Equatorial Pacific Core V28-238: Oxygen Isotope Temperatures and Ice Volumes on a 105 Year and 106 Year Scale, *Quaternary Research*, 3, 39-55, 10.1016/0033-5894(73)90052-5, 1973.
- 765 Sigman, D. M. and Boyle, E. A.: Glacial/interglacial variations in atmospheric carbon dioxide, *Nature*, 407, 859-869, 10.1038/35038000, 2000.
- Simpson, E. and Schlich, R.: Initial reports of the Deep Sea Drilling Project, vol. 25, Washington, DC: US Government Printing Office, 1974.
- 770 Stirnimann, L., Bornman, T. G., Verheye, H. M., and Fawcett, S. E.: Seasonal trends in Subantarctic plankton $\delta^{13}\text{C}$ and $\delta^{15}\text{N}$ are driven by phytoplankton dynamics and nutrient preference, *Limnology and Oceanography*, 69, 2547-2563, 10.1002/lno.12685, 2024.
- Stoll, H., Shimizu, N., Arevalos, A., Matell, N., Banasiak, A., and Zeren, S.: Insights on coccolith chemistry from a new ion probe method for analysis of individually picked coccoliths, 10.1029/2006gc001546, 2007a.
- 775 Stoll, H. M.: Limited range of interspecific vital effects in coccolith stable isotopic records during the Paleocene-Eocene thermal maximum, *Paleoceanography*, 20, n/a-n/a, 10.1029/2004pa001046, 2005.
- Stoll, H. M., Shimizu, N., Archer, D., and Ziveri, P.: Coccolithophore productivity response to greenhouse event of the Paleocene–Eocene Thermal Maximum, *Earth and Planetary Science Letters*, 258, 192-206, 10.1016/j.epsl.2007.03.037, 2007b.
- 780



- Stoll, H. M., Ziveri, P., Geisen, M., Probert, I., and Young, J. R.: Potential and limitations of Sr/Ca ratios in coccolith carbonate: new perspectives from cultures and monospecific samples from sediments, *Philos Trans A Math Phys Eng Sci*, 360, 719-747, 10.1098/rsta.2001.0966, 2002.
- 785 Takahashi, T., Sutherland, S. C., Wanninkhof, R., Sweeney, C., Feely, R. A., Chipman, D. W., Hales, B., Friederich, G., Chavez, F., Sabine, C., Watson, A., Bakker, D. C. E., Schuster, U., Metzl, N., Yoshikawa-Inoue, H., Ishii, M., Midorikawa, T., Nojiri, Y., Körtzinger, A., Steinhoff, T., Hoppema, M., Olafsson, J., Arnarson, T. S., Tilbrook, B., Johannessen, T., Olsen, A., Bellerby, R., Wong, C. S., Delille, B., Bates, N. R., and de Baar, H. J. W.: Climatological mean and decadal change in surface ocean pCO₂, and net sea-air CO₂ flux over the global oceans, *Deep Sea Research Part II: Topical Studies in Oceanography*, 56, 554-577, 10.1016/j.dsr2.2008.12.009, 2009.
- 790 Tangunan, D., Baumann, K.-H., Pätzold, J., Henrich, R., Kucera, M., De Pol-Holz, R., and Groeneveld, J.: Insolation forcing of coccolithophore productivity in the western tropical Indian Ocean over the last two glacial-interglacial cycles, *Paleoceanography*, 10.1002/2017pa003102, 2017.
- Tierney, J. E., Poulsen, C. J., Montanez, I. P., Bhattacharya, T., Feng, R., Ford, H. L., Honisch, B., Inglis, G. N., Petersen, S. V., Sagoo, N., Tabor, C. R., Thirumalai, K., Zhu, J., Burls, N. J., Foster, G. L., Godderis, Y., Huber, B. T., Ivany, L. C.,
- 795 Kirtland Turner, S., Lunt, D. J., McElwain, J. C., Mills, B. J. W., Otto-Bliesner, B. L., Ridgwell, A., and Zhang, Y. G.: Past climates inform our future, *Science*, 370, 10.1126/science.aay3701, 2020.
- Toggweiler, J. R., Russell, J. L., and Carson, S. R.: Midlatitude westerlies, atmospheric CO₂, and climate change during the ice ages, *Paleoceanography*, 21, 10.1029/2005pa001154, 2006.
- van der Lubbe, H. J. L., Hall, I. R., Barker, S., Hemming, S. R., Baars, T. F., Starr, A., Just, J., Backeberg, B. C., and
- 800 Joordens, J. C. A.: Indo-Pacific Walker circulation drove Pleistocene African aridification, *Nature*, 598, 618-623, 10.1038/s41586-021-03896-3, 2021.
- Weiffenbach, J. E., Baatsen, M. L. J., Dijkstra, H. A., von der Heydt, A. S., Abe-Ouchi, A., Brady, E. C., Chan, W.-L., Chandan, D., Chandler, M. A., Contoux, C., Feng, R., Guo, C., Han, Z., Haywood, A. M., Li, Q., Li, X., Lohmann, G., Lunt, D. J., Nisancioglu, K. H., Otto-Bliesner, B. L., Peltier, W. R., Ramstein, G., Sohl, L. E., Stepanek, C., Tan, N., Tindall, J. C.,
- 805 Williams, C. J. R., Zhang, Q., and Zhang, Z.: Unraveling the mechanisms and implications of a stronger mid-Pliocene Atlantic Meridional Overturning Circulation (AMOC) in PlioMIP2, *Climate of the Past*, 19, 61-85, 10.5194/cp-19-61-2023, 2023.
- Winter, A., Jordan, R. W., and Roth, P. H.: Biogeography of living coccolithophores in ocean waters, in: *Coccolithophores*, edited by: Winter, A., and Siesser, W. G., Cambridge University Press, New York, 37, 1994.
- 810 Zachos, J., Pagani, M., Sloan, L., Thomas, E., and Billups, K.: Trends, rhythms, and aberrations in global climate 65 Ma to present, *Science*, 292, 686-693, 2001.
- Zachos, J. C., Dickens, G. R., and Zeebe, R. E.: An early Cenozoic perspective on greenhouse warming and carbon-cycle dynamics, *Nature*, 451, 279-283, 10.1038/nature06588, 2008.



- 815 Zhang, R. and Jiang, D.: Impact of vegetation feedback on the mid-Pliocene warm climate, *Advances in Atmospheric Sciences*, 31, 1407-1416, 10.1007/s00376-014-4015-5, 2014.
- Zhang, Z., Li, X., Guo, C., Otterå, O. H., Nisancioglu, K. H., Tan, N., Contoux, C., Ramstein, G., Feng, R., Otto-Bliesner, B. L., Brady, E., Chandan, D., Peltier, W. R., Baatsen, M. L. J., von der Heydt, A. S., Weiffenbach, J. E., Stepanek, C., Lohmann, G., Zhang, Q., Li, Q., Chandler, M. A., Sohl, L. E., Haywood, A. M., Hunter, S. J., Tindall, J. C., Williams, C., Lunt, D. J., Chan, W.-L., and Abe-Ouchi, A.: Mid-Pliocene Atlantic Meridional Overturning Circulation simulated in
820 PlioMIP2, *Climate of the Past*, 17, 529-543, 10.5194/cp-17-529-2021, 2021.
- Ziveri, P., de Bernardi, B., Baumann, K.-H., Stoll, H. M., and Mortyn, P. G.: Sinking of coccolith carbonate and potential contribution to organic carbon ballasting in the deep ocean, *Deep Sea Research Part II: Topical Studies in Oceanography*, 54, 659-675, 10.1016/j.dsr2.2007.01.006, 2007.
- Ziveri, P., Stoll, H., Probert, I., Klaas, C., Geisen, M., Ganssen, G., and Young, J.: Stable isotope ‘vital effects’ in coccolith
825 calcite, *Earth and Planetary Science Letters*, 210, 137-149, 10.1016/S0012-821X(03)00101-8, 2003.