



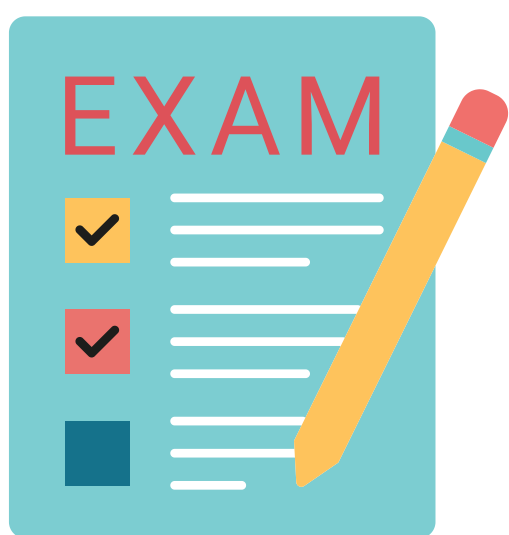
EXAM ACCESS ARRANGEMENTS

Let's talk about the importance of these!



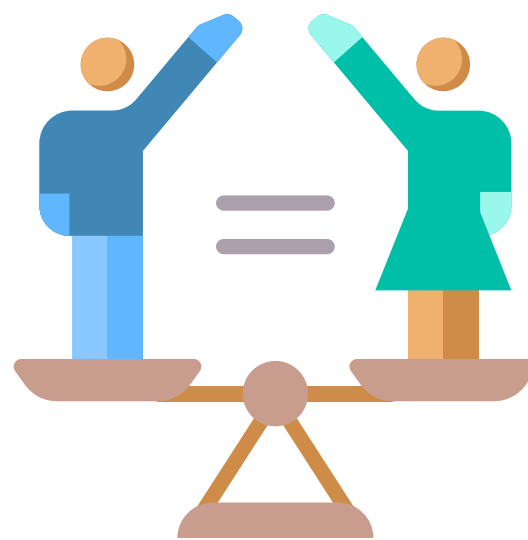
WHAT ARE ACCESS ARRANGEMENTS?

1 What are access arrangements?



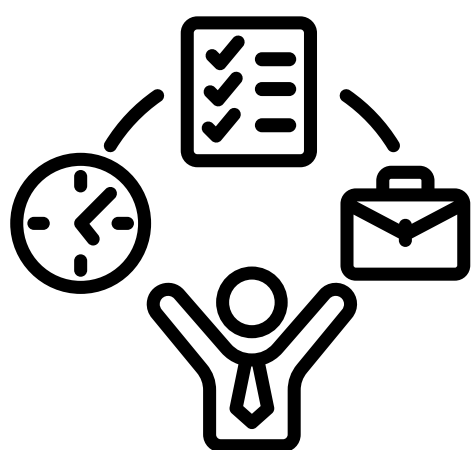
Access arrangements are reasonable adjustments designed to give equal opportunities to all students to demonstrate their skills, knowledge, or understanding in exams.

2 Do access arrangements give an unfair advantage?



Access arrangements do **not** give students an unfair advantage. They are intended to help students showcase their knowledge, expertise, and comprehension during exams.

3 Does everyone receive the same access arrangement?



Access arrangements aren't one-size-fits-all. Each student has unique needs, so it's essential to find the perfect fit.

4 Types of access arrangements



The most common types of access arrangements are:

- extra time
- separate invigilation/small group room
- word processor/laptop
- reading pen
- human or computer reader
- supervised rest breaks
- prompt
- modified papers (e.g., larger font)
- human scribe
- Assistive technology such as voice-to-text software

WHO MAY QUALIFY FOR AN ACCESS ARRANGEMENT?

1 Who is eligible for an access arrangement?



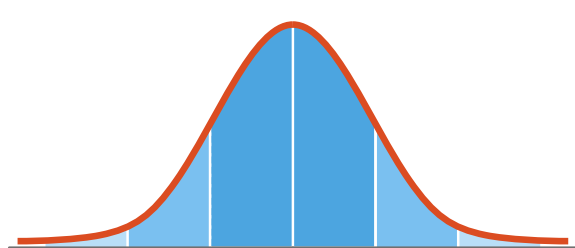
Any student is eligible for consideration, but your learning support team will assess individual needs to determine which students qualify for access arrangements.

2 Do I need a diagnosis to get an access arrangement?



Here's the deal: you don't need a diagnosis of a learning difficulty to get an access arrangement. But, if you do have a diagnosis, it's not an automatic ticket to access arrangements either.

3 Do I need to be assessed?



To get an access arrangement, the learning support team might need to assess you. Don't sweat it, though; they will lead the way. Just remember, only an assessment coordinated through the school will count as valid. So, no solo detective work, please!

4 What else is needed to qualify?



To ensure you're getting the best support, access arrangements will be tailored to your specific needs and classroom routine. For instance, if typing on a laptop is your go-to instead of jotting down notes by hand, your teacher or other school staff can show evidence of your typical in-class practices.

HOW CAN I USE MY ACCESS ARRANGEMENT?

1



Understand why you qualified.

Unlock the full potential of your access arrangement by understanding why you qualify for it. Chat with your learning support team to get the scoop on when and how to use it like a pro!

2



Talk to the SENCO at your school.

Track down your school's expert on Special Education Needs - the SENCO! They hold the key to all the details about access arrangements and can share tips on how to make the most of your access arrangement.

3



Take initiative!

Got an access arrangement? Put that baby to work! Keep it in motion and take a moment to reflect on how it's making a difference in your work. Don't be afraid to speak up, let your teachers know how they can best support you.