

State-of-the-Art in Smart Contact Lenses for Human Machine Interaction

Yuanjie Xia, Mohamed Khamis, F. Anibal Fernandez, Hadi Heidari, Haider Butt, Zubair Ahmed, Tim Wilkinson, Rami Ghannam*

Abstract—Contact lenses have traditionally been used for vision correction applications. Recent advances in microelectronics and nanofabrication on flexible substrates have now enabled sensors, circuits and other essential components to be integrated on a small contact lens platform. This has opened up the possibility of using contact lenses for a range of human-machine interaction applications including vision assistance, eye tracking, displays and healthcare. In this article, we systematically review the range of smart contact lens materials, device architectures and components that facilitate this interaction for different applications. In fact, evidence from our systematic review demonstrates that these lenses can be used to display information, detect eye movements, restore vision and detect certain biomarkers in tear fluid. Consequently, whereas previous state-of-the-art reviews in contact lenses focused exclusively on biosensing, our systematic review covers a wider range of smart contact lens applications in HMI. Moreover, we present a new method of classifying the literature on smart contact lenses according to their six constituent building blocks, which are the sensing, energy management, driver electronics, communications, substrate and the I/O interfacing modules. Based on recent developments in each of these categories, we speculate the challenges and opportunities of smart contact lenses for human-machine interaction. Moreover, based on our analysis of the state-of-the-art we develop guidelines for the future design of a self-powered smart contact lens concept with integrated energy harvesters, sensors and communications modules. Therefore, our review is a critical evaluation of current data and is presented with the aim of guiding researchers to new research directions in smart contact lenses.

Index Terms—Contact Lenses, Human Machine Interaction, Human Computer Interaction, Wearables.

I. INTRODUCTION

CONTACT lenses are thin lenses which could be placed directly on the surface of human eyes. They have historically been used for vision correction and they were first developed by Adolf Fick in 1887 to correct astigmatism [1]. These lenses have now undergone a series of innovations and are gaining popularity due to recent developments in materials engineering and microfabrication. Currently, these innovative

platforms are mainly being considered for a plethora of medical applications since they are noninvasive [2] and can be used to deliver medicines [3]. In comparison to traditional implantable devices, contact lenses do not require surgery and are capable of monitoring bio-markers continuously. This is especially true since tear fluid carries philological bio-markers that can be used to monitor the health of its wearer [4].

Advancements in smart contact lenses was impeded by the ability to communicate the ‘sensed’ data wirelessly. In fact, this technological challenge hindered the development of smart contact lenses during the past two decades. However, advanced microfabrication technologies enabled miniature electronic components to be integrated on a contact lens. Contact lenses can now integrate sensors, driver electronics, energy modules, antennae and I/O terminals on the same platform. Progress in microelectronics packaging technology as well as nanofabrication and nanocommunications has therefore resulted in multiple potential applications for smart contact lenses. For example, in addition to their use for vision correction, medical staff could potentially monitor diabetes patients in real-time using these smart contact lenses [5]–[7].

In addition to the healthcare field, there are a variety of promising smart contact lens applications, as shown in fig. 1(a). According to our investigations, applications of existing smart contact lens could be divided into four main categories, which are: (a) eye tracking, (b) healthcare (medical), (c) displays and (d) vision correction. We will discuss recent progress in each of these application areas in section VI of our article. Moreover, we have identified six constituent building blocks of smart contact lenses, which are the (a) Sensor, (b) Energy, (c) Driver Chip, (d) Communications, (e) Input/Output (I/O) Interface and (f) Substrate & Interconnection modules. We chose to discuss recent developments in smart contact lenses according to these five building blocks. As is shown in fig. 1(b), the Energy module is concerned with power harvesting and storage, while the Driver Chip module provides and regulates this energy, ensuring all electronic modules operate safely. Furthermore, we included a fifth module called “Substrate & Interconnection”, which hosts and connects all these electronic modules together.

First, in section II we demonstrate how our eyes can be used for HMI applications from a physiological and technical perspective. Next, in section III of the paper we discuss the State-of-the-Art in review papers on smart contact lenses. In section IV we describe our methodology in compiling relevant research articles that match our search criteria. Subsequently, we discuss and analyse results from our search in section V. Moreover, based on these recent developments and to

Y. Xia, H. Heidari and R. Ghannam are with the School of Engineering, University of Glasgow, UK. e-mail: rami.ghannam@glasgow.ac.uk.

Z. Ahmed is with the Institute of Inflammation and Ageing, University of Birmingham, UK. email: z.ahmed.1@bham.ac.uk.

M. Khamis is with the School of Computing, University of Glasgow, UK. email: mohamed.khamis@glasgow.ac.uk.

F. Anibal Fernandez is with the Department of Engineering, University College London, UK. e-mail: a.fernandez@ucl.ac.uk.

T. Wilkinson is with the Department of Engineering, University of Cambridge, UK. email: tdw@eng.cam.ac.uk.

H. Butt is with the Department of Mechanical Engineering, Khalifa University, Abu Dhabi, UAE. e-mail: haider.butt@ku.ac.ae.

Manuscript received XXXX; revised XXXX

ensure that smart contact lenses can be used for a variety of HMI applications, we propose an autonomously driven concept contact lens in section VI. Finally, the paper ends with concluding remarks and a proposed outlook in section VII.

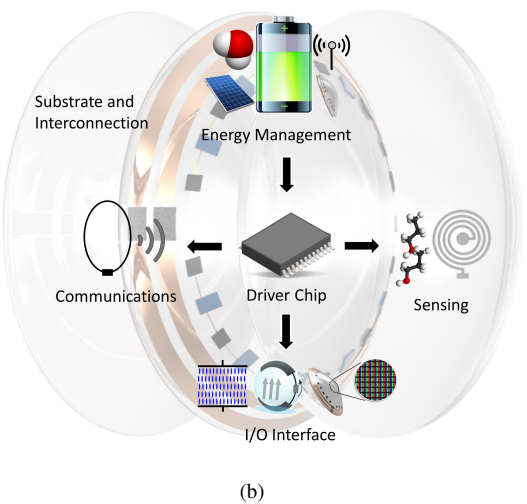


Fig. 1: (a) Range of contact lens applications for Human-Machine Interaction (HMI) that include medical, eye tracking, display and vision assistance. (b) Constituent building blocks of smart contact lenses, which include the Energy Management, Communications, Driver Chip, Sensing, I/O Interface and the Substrate & Interconnection modules.

II. USING OUR EYES FOR HMI

HMI is concerned with how people and automated systems interact and communicate with each other. This has long ceased to be confined to just traditional machines in industry and now also relates to computers, digital systems or devices for the 'internet of things (IoT) [8]. More and more devices are connected and automatically carry out tasks in the background. Operating all of these machines, systems and devices need

to be intuitive and must not place excessive demands on users. Therefore, smooth communication between people and machines requires user-friendly interfaces. A contact lens is one of those interfaces that could broaden the potential applications and facilitate HMI. The purpose of this section is to demonstrate that eye movements could be used to facilitate HMI.

A. Physiology of the Eye

Before reviewing the range of contact lens technologies that can be used for HMI, it is important to understand the basic physiology of the eye, how it moves and what are the muscles responsible for this movement. The eye is a spherical organ with a mean diameter of around 24 mm. As demonstrated in figure 2, eye rotation is controlled by six ocular muscles, which are the superior rectus, inferior rectus, lateral rectus, medial rectus, the superior oblique and the inferior oblique. The contraction of these six eye muscles result in eye movements [9]. There are mainly three reasons for eye movements, which are reducing image motion, positioning the fovea and avoiding double vision [10], [11]. Moreover, there are six types of basic eye movements, which include abduction, adduction, supraduction, infraduction, incyclotorsion and excyclotorsion [12]. In abduction and adduction, the cornea moves away from and towards the midline, respectively. Similarly, supraduction and infraduction means that the cornea moves upwards and downwards, respectively. In addition to the previous four movements, the eye can rotate clockwise or counterclockwise thanks to the superior oblique and inferior oblique muscles, respectively. In fact, every complex eye movement is made up of these six basic eye movements, which could be controlled by humans consciously.

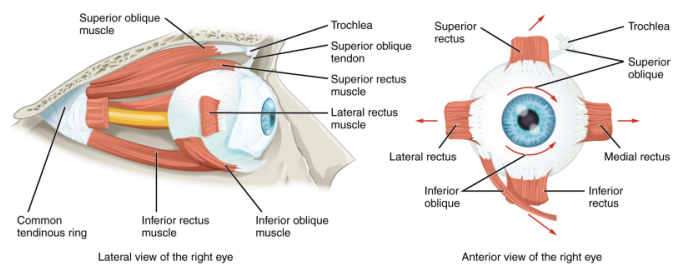


Fig. 2: Schematic diagram of the eye, which shows six essential muscles that are responsible for eye movements (adapted from [13] © 2021, StatPearls Publishing LLC.)

B. Advantages of Eyes for HMI

HMI applications require an input device, which may involve a touch-screen device, touch pad or keyboard [14]. However, most of these input devices require manual manipulation. Moreover, since our eyes are used to collect the necessary visual information from these machines, we can also use them to control and interact with these machines for HMI application. Consequently, hardware and software can be developed to detect eye movements and gestures such as gaze and blinking to facilitate HMI. In fact, there are a variety of

methods in the literature that can be used for gaze and eye tracking, which include computer vision [15], [16], magnetic sensing [17] and laser sensing [18].

Therefore, in comparison to traditional input devices, eye-related gesture recognition and tracking avoids physical contact and benefits people with impaired movement. For example, previous studies in the literature confirmed that eye blinking could be used to facilitate HMI [19], [20]. Here, ‘blinking’ is a semi-automatic reflex function that is controlled by two muscles, which are the levator palpebrae superioris and the orbicularis oculi [21]. People sometimes blink consciously as a form of body language or gesture, which is interpreted as ‘winking’. Therefore, by combining blink detection, gaze tracking and eye movement, our eyes could be used as an effective and user-friendly interface for HMI applications.

III. STATE OF THE ART

Over the past two decades, major advances in electronics have allowed researchers to design and integrate miniature electronic systems into contact lens platforms. Smart contact lenses became an increasingly popular topic in electronic wearable devices. In previous studies, researchers have proposed and realized contact lens for health monitoring, gaze tracking and many other applications. The purpose of this section is to survey the latest review articles of contact lens technology. In table I, we summarized the published year and contributions of 3 previous review paper in this field. Additionally, we will also conclude the limitations of previous review paper and show how our work could address the limitations.

TABLE I: Comparison with previous literature review

Ref.	Year	Contribution
[30]	2015	Survey on contact lenses for biosensing applications. Manuscript also reviews contact lens market and the FDA regulatory requirements.
[31]	2018	Survey on tear-based biosensing technology.
[32]	2020	Survey on contact lenses for medical applications, which includes latest trends in biosensing, information transmission, drug delivery and energy storage.
This paper	2022	Systematic review of current trends, challenges and future research directions on smart contact lenses for a wide variety applications, including medicine, displays, vision assistance and eye tracking.

Farandos *et al.* published the first review article on smart contact lenses in 2015 [30]. They confirmed that contact lenses are attractive platforms for health monitoring applications in comparison to other wearable technologies due to their ‘minimalistic nature’. Their manuscript started with background information regarding the physical characteristics of the eye, followed by an analysis into tear fluid composition. They reviewed the state-of-the-art in contact lens sensor fabrication, detection techniques as well as the energy harvesting and readout systems. They also analyzed the market for contact lenses and FDA regulatory requirements for commercialization of contact lens sensors. Their manuscript focused on reviewing advances in monitoring intraocular pressure (IOP)

and tear glucose, which were the two main application areas of smart contact lenses at that time. Their paper mentioned that commercial contact lens products require sufficient selectivity, sensitivity, reproducibility and could ensure patient compliance. They also mentioned that treatment capabilities could be integrated in contact lens platform. For future development, they highlighted three main challenges with contact lenses, which were energy harvesting, wireless connectivity and sensor stability.

Moreover, in 2018 Tseng *et al.* evaluated different kinds contact lenses for biosensing applications [31]. Their article focused on reviewing the different methods for using tear fluid as a detection medium for different diseases such as cancer, ocular disorders and diabetes. They reviewed previous manuscripts about tear content, and evaluated both active as well as passive sensors for tear content sensing. Their review paper predicted that future smart contact lenses would lead to better personalized medical treatment. Similar to the review article by Farandos *et al.*, they again highlighted that contact lens stability and sensor data repeatability is a challenge. Other challenges that were mentioned were wearer comfort and cost.

In 2020, Kim *et al.* published another review article on smart contact lenses for biosensing applications that focus on diseases diagnosis [32]. Their review analysed both physical and chemical sensors. They also briefly introduced state-of-the-art in contact lenses for drug delivery, data transmission and power storage. They mentioned that further research is necessary to fully appreciate what biomarkers can be detected in tear fluid. They also indicated that an optimisation of sensor accuracy is necessary, since this depends on the nature of the disease to be detected and some diseases require higher sensing accuracy than others. Moreover, they raised concerns regarding sensor stability and bio-compatibility. However, they concluded that smart contact lenses could enable noninvasive health monitoring and diagnosis based on people’s tear fluids, which is likely to be used more extensively.

Based on the above, state-of-the-art review articles on smart contact lenses have focused on biosensing applications. In this manuscript, we aim to systematically review the range of contact lens technologies that facilitate HMI. These technologies include biosensing and other relevant technologies, such as liquid crystal displays and augmented reality. In this context, our work goes beyond existing review articles in this field, since it aims to showcase how contact lenses have supported HMI and have been used in applications other than the medical field.

IV. METHODOLOGY

In this section, we define our research methodology in collecting and synthesizing evidence on smart contact lenses using clearly defined criteria. Academic journal articles and conference papers were chosen for review, considering their relatively high impact. Web of Science, which was one of the largest academic database, was used for identifying the articles using certain keywords to confine the results. In addition, the keywords that were used to the searching query are shown in table II. The (AND) Boolean operator was used

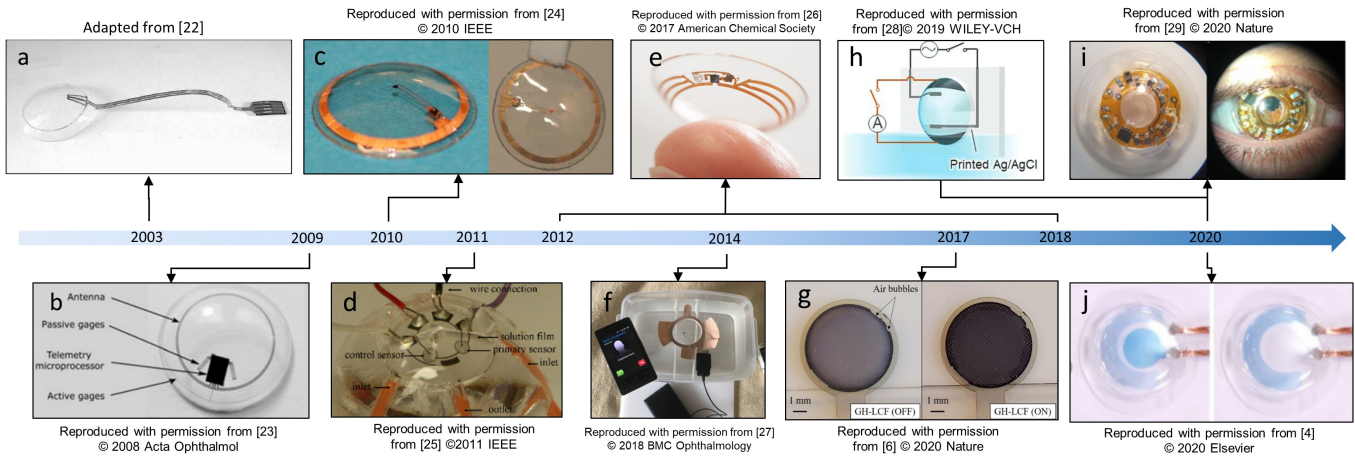


Fig. 3: Timeline of smart contact lens development. (a) Earliest smart contact lens developed by M. Leonardi *et al.* in 2003 [22]. (b) Subsequent advancements in the micro-fabrication industry led to the development of more sophisticated contact lenses six years later. For example, the first contact lens designed for intraocular pressure (IOP) monitoring [23]. In (c), an antenna was integrated on a contact lens for energy harvesting. The harvested power was used to power a single-pixel LED [24]. (d) The first contact lens designed for glucose monitoring [25]. (e) Google aimed to commercialize contact lenses for glucose measurement, but the project was discontinued due to inaccuracies when using tear glucose to predict blood glucose [26]. (f) SENSIMED also developed and commercialized contact lenses for IOP sensing [27]. (g) The first contact lens artificial iris design, which used liquid crystals (LCs) for changing the transparency of the contact lens [6]. The next images show most recent smart contact lens applications for (h) dry eye treatment [28], (i) gaze tracking [29] and (j) hazard perception [4].

to connect these descriptors. All manuscripts that contain the aforementioned keywords were included in our review.

Similar to the methodology described in [33], we first defined the research questions and the inclusion criteria of our search. Second, we selected relevant manuscripts that met these criteria. Third, we analyzed and interpreted our search results. In this case, we defined the following research questions (RQ):

- 1) RQ1: Where is the research activity on smart contact lenses mainly located?
- 2) RQ2: What are the building blocks and device architectures?
- 3) RQ3: What are the applications and different ways in which contact lenses have been used to facilitate HMI?
- 4) RQ4: What are the challenges and future research directions?

Based on the above questions, the following inclusion criteria (InC) were defined:

- 1) InC 1: Articles written in English;
- 2) InC 2: Articles matching the definitions and descriptors mentioned in table II.

Having defined our research questions as well as our inclusion criteria, we defined our approach in searching for the relevant literature. We used 'Web of Science' portal for our search with the descriptors: smart contact lens, electronic contact lens, wireless contact lens and sensing contact lens. A forward and backward search was also performed via 'Google scholar' to make sure that all literature has been captured.

V. RESULTS AND DISCUSSION

In this section, we analyze the literature on smart contact lenses for HMI applications. In total, 83 manuscripts satisfied

our search criteria, which were described in the previous section. A total of 37 articles were published from Asia, 22 from Europe, 22 from North America, 2 from South America. The majority of these manuscripts (approximately 61%) were published during the past 5 years. Therefore, in response to RQ1, the Asian continent is most productive in contact lenses research.

Accordingly, we noticed an onset of research interest on smart or electronic contact lenses from 2008, as shown from figure 4. This is just one year after the emergence of the first Apple iPhone (2007). It is also just four years after the beginning of the nanometer sized transistors. The year 2008 also signifies an important milestone in the transistor industry, since it marks the emergence of the 45 nm node technology, thus paving the way for advanced processors such as the atom and the core i7 [38]. Such critical technological advancements had an important role in the development of electronic components on contact lens system. We will discuss the range of technologies in each of these sections. In fact, 50 articles have been published since 2015, which accounts for 73.5% of all the publications on smart or electronic contact lenses. We also observe an obvious rise in publications in this field from 2000 to 2020.

To address RQ2 and based on our gathered research data, recent developments in smart contact lenses can be categorised according to the six previously mentioned building blocks. Approximately 7% of these manuscripts reported developments in more than one building block and a "Hybrid" category was introduced, as shown in figure 5. Furthermore, almost a third (33.7%) of all the literature was devoted to the "Sensing" category, whereas roughly another third reported developments in the "Energy" and "Driver Chip" modules (16.9% and

TABLE II: DESCRIPTORS AND SYNONYMS USED FOR OUR SEARCH.

Descriptor	Definition	Synonyms
Contact Lens	Contact lenses are thin lenses placed directly on the surface of the eyes [34]	Contacts, soft lenses and extended-wear lenses
Smart Electronic	A smart device is able to do many of the things that a computer does [35] An electronic device has transistors or silicon chips which control and change the electric current passing through the device [36]	Autonomous Electronics
Wireless	Wireless technology uses radio waves rather than electricity and therefore does not require any wires [37]	RF powered

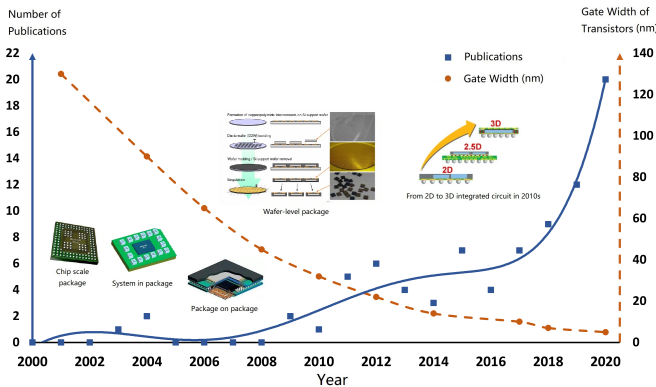


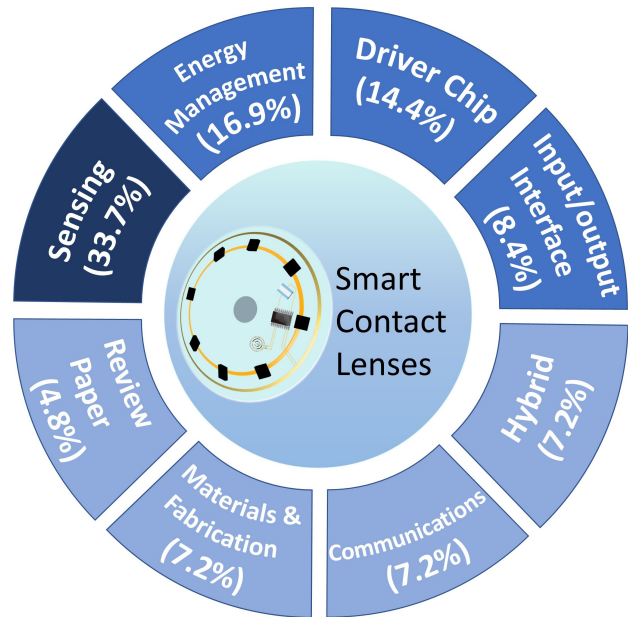
Fig. 4: Comparison between the publications activity on smart or electronic contact lenses with CMOS gate width dimensions. A rise in publications activity started in 2008, which corresponded to the 45 nm gate width.

14.4% of manuscripts, respectively). With the exception of the “Hybrid” papers and the four Review papers, a fifth of all the literature reported developments in the remaining four building blocks of smart contact lenses. Latest developments in each of these categories will be discussed in this section. Moreover, details regarding the application areas of smart contact lenses will be discussed in Section VI.

A. Sensing

Most contact lenses involve a sensing module, especially since they are widely regarded as a non-invasive platform that could be used to measure vital human signs, such as glucose levels and intraocular pressure (IOP). In recent studies, researchers developed contact lenses for gaze tracking and electroretinogram (ERG) measurement. Common sensor types and applications are listed in Table III. In this section, we will discuss latest sensor developments in contact lens design.

1) *Glucose Monitoring*: Yao *et al.* demonstrated a wireless health monitoring contact lens for detecting glucose levels in tear [39]. Their design could work as a noninvasive and continuous glucose monitor for diabetes, as shown in fig. 6a i. In fact, their contact lens uses enzyme-based electrochemical glucose sensors due to its high selectivity and efficiency. With the glucose oxidase catalysing the reaction between glucose and oxygen in free space to form hydrogen peroxide and gluconolactone [76]. Subsequently, the hydrogen peroxide will be detected by electrodes after decomposition.



Topic Popularity:



Fig. 5: Different components and building blocks of a smart contact lens. These are the Sensing, I/O Interfacing, Communications, Driver Chip and Substrate & Interconnecting modules. A hybrid category was introduced to include smart contact lens developments in more than one building block. Our search also included four review papers. According to our search, the majority of the literature has focused on developments in the sensing, energy and driver chip modules, with fewer publications on the Communications and well as the I/O Interfacing modules.

2) *IOP Monitoring*: In addition to glucose monitoring, researchers have demonstrated contact lenses that are capable of monitoring IOP directly and continuously. High IOP could be regarded as a driving element for glaucoma, which is a degenerative condition of the posterior pole of the eye and can lead to irreversible blindness. Hence, IOP monitoring contact lenses could prevent the development and progression of this disease [77]. Therefore, an IOP sensor design was devised by Leonardi *et al.* [23]. Their IOP sensor relies on mechanical changes caused by raised IOP levels, which lead to a variation

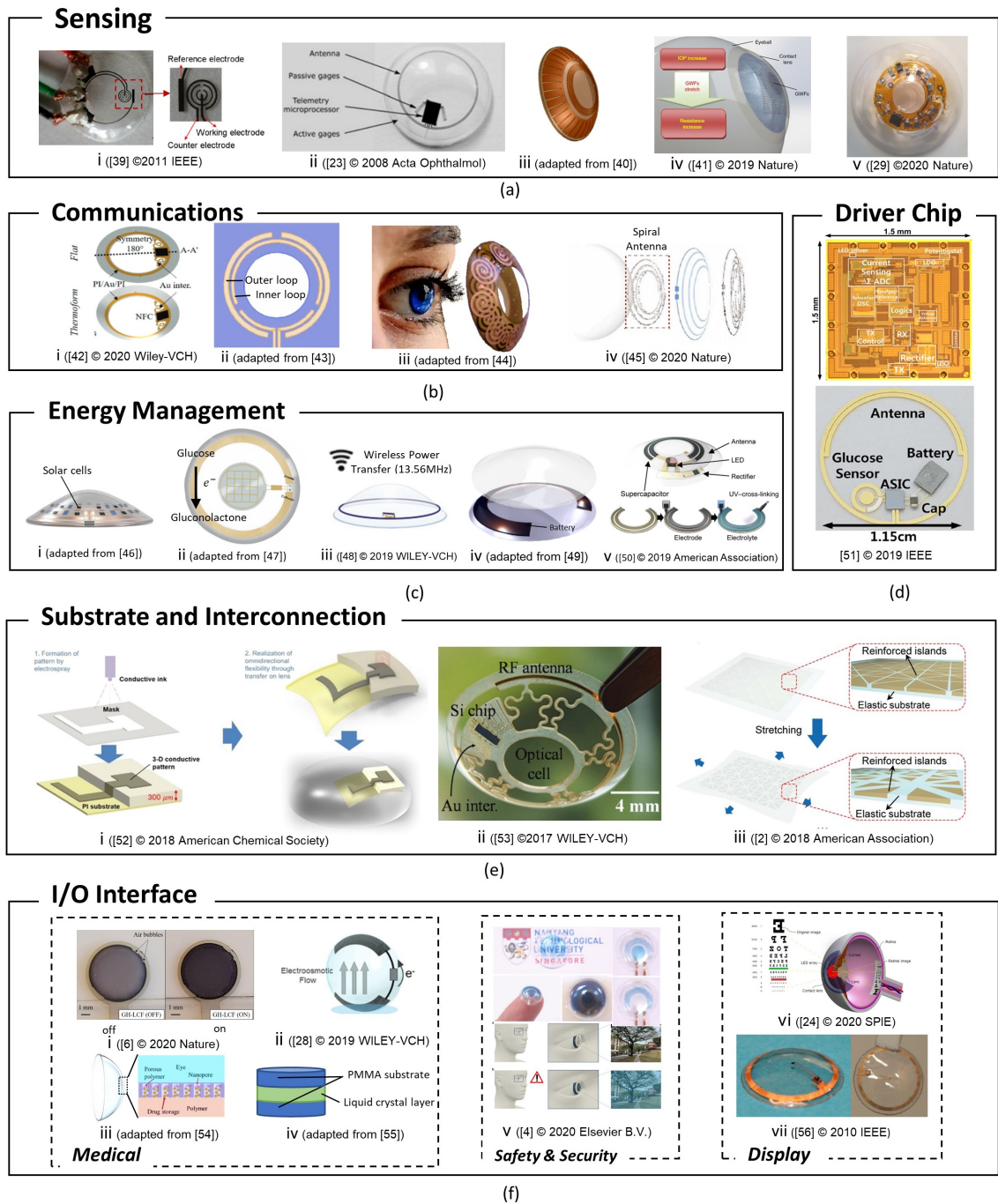


Fig. 6: Essential building blocks of a smart contact lens, which include: (a) Sensors: (i) Glucose sensing [39], (ii) IOP sensing [23], (iii) IOP sensing [40], (iv) IOP sensing [41] and (v) Eye tracking [29]. Subfigure (b) demonstrates different types of antenna design including: the loop antennae as demonstrated by (i) [42], (ii) [43]; the spiral antenna as demonstrated by (iii) [44], and (iv) [45]. Subfigure (c) demonstrates different types of energy modules including: energy harvesters, as demonstrated by (i) [46], (ii) [47] and (iii) [48]. Moreover, power storage methods in contact lenses were demonstrated by (iv) [49] and (v) [50]. Subfigure (d) shows a driver chip design [51]. Subfigure (e) demonstrates innovative substrate and interconnection design for smart contact lenses [2], [52], [53]. Subfigure (f) demonstrates input/output terminal block for applications that include, (i) an artificial iris [6], (ii) dry eye treatment [28], (iii) drug delivery [54], (iv) presbyopia treatment [55], (v) safety & security [4], (vi) display demonstrated [24] (v) display [56].

in capacitance, as demonstrated in fig. 6a ii.

Furthermore, Zhang *et. al* designed an IOP sensor based on graphene woven fabrics [41]. They observed that a variation

of IOP causes a change in readout voltage when the sensor current is constant, which implies a change in sensor resistance. Their design is demonstrated in fig. 6a iv. However, their

TABLE III: Range of sensor technologies for smart or electronic contact lenses.

Sensor Type	Application	Reference	Percentage
Capacitance Sensor	IOP measurement	[27], [40], [45], [54], [57]–[65]	52.9%
Resistance sensor		[22], [23], [41], [66]	
Inductor sensor		[67]	
Electrochemistry sensor	Glucose measurement	[1], [2], [5], [25], [39], [51], [68]–[72]	32.3%
Laser sensor	Eye track	[17], [18], [29], [73], [74]	14.7%
Graphene electrode array	ERG measurement	[75]	2.9%

contact lens was characterised for a range of voltages from 0-10 V, with a particular focus on the linear region between 6-10 V, which may be too high for a practical wearable application. In addition, they also claim that this sensing contact lens is low-cost and disposable, which makes it a promising platform for point-of-care medical treatment.

3) *Gaze Tracking*: Apart from IOP and glucose sensing, researchers have also investigated the feasibility of developing sensors for gaze tracking. In comparison with the video-based method, eye tracking smart contact lenses are more convenient for constrained environments. For example, Massin *et al.* purposed an eye tracking contact lens using encapsulated photodetectors [18], [73]. An infra-Red (IR) source emitter was mounted on an external glasses frame. Photodetectors were illuminated by the external source and eye movement was detected via a variation in the amount of light that the photodetectors register. A similar design was also purposed by Khaldi *et al.*, where an IR emitter was mounted on a smart contact lens that detected eye movements using an external IR camera [29], as demonstrated in fig. 6a v.

Moreover, instead of photodetecting sensors, Tanwear *et al.* used spintronic sensors to detect eye movement. Their sensor concept was based on the tunnel magnetoresistance (TMR) effect [17]. Their design integrated magnetic materials on contact lenses to detect the variation of magnetic field via spintronic sensors on the glasses frame.

4) *ERG Monitoring*: Finally, Yin *et al.* demonstrated a soft graphene electrode array that was fabricated on a contact lens for measuring ERG continuously from cynomolgus monkeys [75]. Their contact lens could be used in ophthalmic diagnosis to assess if the retina works properly. The graphene sensor array ensures contact lens transparency and comfort.

As evidenced from the literature, advances in materials design and fabrication technology lead to further innovations in sensor technology. When integrated on a soft contact lens platform, these innovative sensors widen the range of HMI applications that smart contact lenses can be used in.

B. Energy

The ‘Energy’ module in a smart contact lens includes energy harvesting and power storage, which are two essential components for an electronic contact lens to function. To ensure uninterrupted and long term operation, contact lenses require self-sustainable and autonomous power. It can be realized by harvesting energy from the external environment. Examples of energy sources include light, heat, RF waves and motion.

Additionally, after the energy being harvested, a power storage system is required to store them and provide a stable power input. Thus, the energy module of smart contact lens involves energy harvester and power storage system.

1) *Energy Harvesting*: There has been mainly three ways to harvest energy to power contact lenses: RF energy, solar energy and biochemical energy. A comparison between the amount of energy that can be harvested from these sources for wearable applications has previously been mentioned in the literature [78], with highest energy densities being achieved with photovoltaic (PV) cells. According to previous studies, there are multiple alternative energy source in smart contact lens design. Moreover, there is interest in using machine learning techniques to predict the amount of harvestable energy from these sources [79], [80]. Table III contains publications about different energy sources and the maximum power. This section involves different kinds of energy sources and storage methods being applied on contact lenses.

TABLE IV: Range of energy harvesting techniques for smart contact lenses. Highest energy densities obtained using solar (photovoltaic) energy

Sources	Maximum Power	References
RF Energy	$110\mu W$	[24], [50], [51], [59], [60], [68], [70], [71], [81]–[91]
Biochemical Energy	$2.4\mu W/cm^2$	[5], [47], [90], [92], [93]
Solar Energy	$1.24mW/cm^2$	[46], [85], [91]

Harvesting RF energy from an external RF source is not intermittent. Thus, RF energy is a preferable and reliable energy source for smart contact lens system, as is demonstrated in fig. 6c iii. For example, a loop antenna was proposed by Takamatsu *et al.* to harvest RF energy [48]. Here, an external RF transmitter was placed at glass frame, which is 5 mm away from the contact lens, provided 1V DC source with up to 50% efficiency.

Apart from RF power, researchers also investigated the possibility of integrating solar cells on contact lenses, as is shown in fig. 6c i. For example, Lingley *et al.* demonstrated a contact lens with $500 \times 500 \times 10\mu m^3$ single crystal silicon solar cells [46]. The implantable solar cell had a maximum efficiency of 1.24% for a 725 nm source at 310 mV. Moreover, using a solar simulator that emulates an AM1.5 light source,

the power density of their solar cell 1.24 mW/cm^2 . Despite this relatively high energy density for a solar cell, the actual harvestable power is small ($3.1 \text{ } \mu\text{W}$) due to the constrained size of contact lenses.

Harvesting energy from the body's biochemical energy has also been demonstrated. For example, Frei *et al.* demonstrated biochemical energy harvesting from metabolites in tear fluid, as shown in fig. 6c ii [93]. In their design, the glucose fuel cell could only generate around $2.4 \mu\text{W/cm}^2$ at a cell voltage of 0.56 V. In comparison to RF and solar energy harvesting, biochemicals in tear fluid yield much lower power densities, as shown in Table IV.

In future, triboelectric transducers can also be considered as a feasible solution for powering electronic or smart contact lenses. These devices have not been demonstrated in the literature, but they have been used in implantable devices. With an implanted triboelectric receiver, an external acoustic wave could transfer energy remotely [94]. Furthermore, to overcome many of the drawbacks of each of these energy harvesters, a hybrid energy harvester can be designed for smart contact lenses [91]. Such a harvester would be designed to leverage the advantages of each energy harvester. Future energy harvesting techniques may also include scavenging the eye's movements as well as blinking and winking. Here, deformation and vibration of piezoelectric materials enables kinetic energy from these gestures and movements to be converted to electrical energy [95].

In comparison to other energy harvesting techniques, RF energy harvesting has been predominantly investigated in the literature. Although solar cells yield highest energy densities, RF harvesters are capable of scavenging more energy on the contact lens platform. Moreover, solar (or light) energy is location and time dependent, which makes it an intermittent energy source. Therefore, thanks to the advent of 5G technology and the expected proliferation of transmitter antennae, RF energy harvesters have been widely considered as a promising energy harvesting solution in smart contact lens design.

2) *Power Storage*: In the literature, there were two methods for power storage in smart contact lenses: thin film batteries and supercapacitors.

i First, there were 2 papers that demonstrated a thin film battery for power storage on contact lenses. An RF powered (flexible) thin film battery was developed by Nasreldin *et al.* [89]. The electrodes of battery were consisted of lithium nickel manganese oxide (LNMO) and Lithium Titanate (LTO), which is ring shaped with an area of 0.75 cm^2 and thickness of $100 \mu\text{m}$. It had a storage capacity of $32.25 \mu\text{Ah}$ at room temperature and can output 1.2 V to the ASIC.

Lee *et al.* also designed and fabricated a contact lens with a scalable thin film battery [49]. Their battery used olivine LiFePO_4 thin film cathode and achieved a storage capacity of $35 \mu\text{Wh}$ at 0.49 cm^2 in wet conditions, which could power a glucose contact lens for 11.7 hours. Their design is demonstrated in fig. 6c iv.

ii In addition to thin film batteries, researchers considered using supercapacitors to store energy [50], [88]. For example, Park *et al.* successfully printed a supercapacitor on contact lens, which can be fully charged to 1.8 V around

240 seconds [50]. The discharge time varied from 110 to 560 seconds and depended on current density. This printed supercapacitor system commonly works with a stable external RF source, which could stably operate for over 100 hours. The supercapacitor structure is shown in fig. 6c v. With rechargeable and solid-state supercapacitors, contact lenses can operate continuously with unpredictable external power sources such as RF power. In that case, such supercapacitors can provide the energy that a contact lens needs for a few minutes.

Nevertheless, supercapacitors have relatively short charging and discharging times, which means that complimentary energy scavengers - such an RF converter - are necessary to ensure stable energy supply for the contact lens system. In comparison to supercapacitors, thin film batteries have higher capacities, but lower energy densities, which means they occupy a larger space. To overcome this, a hybrid solution comprising supercapacitors and thin film batteries could be developed to provide stable power supply and extended battery life. Future work on energy modules for smart contact lenses should focus on both energy harvesting and power storage to achieve self-sustainable and autonomous contact lenses.

C. Driver Chip

The driver chip is an essential part of a smart contact lens, since it is responsible for effectively managing and regulating received energy, thereby ensuring all electronic modules operate safely. This module often includes rectifiers, regulators and converters, which power the system with appropriate and reliable power signals. Moreover, signals are processed in this module via oscillators, sensor readout circuitry and logic circuitry. This is often required for reading data from the sensing module or for sending control signals to the I/O Interface. According to our review, 14.4% of the literature's research articles involved driver chip. In fact, researchers have mainly focused on designing application-specific integrated circuits (ASICs) for health monitoring applications, as shown from our results in Table V. The table lists five representative publications about ASIC design, which covers three different applications. Although there are other applications of smart contact lenses, researchers have not made any fully functional prototypes [6].

The power consumption of smart contact lenses typically varies between 0.27 nW and 1.4 mW, depending on the function and structure of the controller chip, as shown in Table V [51], [63], [70], [96], [97]. This energy consumption is for the whole system rather than only the driver chip. As is shown in fig. 6d, the most recent integrated circuit (IC) designed by Jeon *et al.* demonstrated the possibility of developing a near zero power consumption driver, which was based on the load-shift keying (LSK) backscattering method [51]. Consequently, this is an important step in realising autonomously powered smart contact lenses with an energy efficient driver chip. Therefore, contact lenses for glucose sensing and monitoring could be designed with less power consumption.

The operating voltage of smart contact lenses is also a crucial parameter, since low voltages reduce power consumption and protect the eyes from potential hazards. For

TABLE V: Characteristics of different IC driver chip designs for various applications

Diagnostic	CMOS Process (nm)	Frequency (MHz)	Power Consumption	Chip Area (mm^2)	Publication Year	Reference
IOP	130	2500	1.4mW	0.49	2010	[96]
	350	13.56	1.2mW	2	2015	[97]
Glucose	0.13	1800	$3\mu\text{W}$	0.22	2012	[70]
	180	433	$<490\text{nW}$	2.25	2020	[51]
	65	4100	0.27nW	0.15	2018	[87]
Tear Content	0.18	920	$110\mu\text{W}$	1.58	2017	[63]

wearable devices, typical input voltages are 3.3 V and 5 V. However, contact lenses should operate at lower input voltage in comparison to other wearable devices since they come into direct contact with human eyes, and a minor malfunction like short circuit could cause irreversible damage. From our review, the operating voltage of contact lenses ranged from 0.165 V to 2 V. For example, Hayashi *et al.* successfully designed a self-powered contact lens for glucose monitor with 0.165 V operating voltage. Their design also consumed 0.27 nW of power, which is lowest among all contact lens designs.

It is noteworthy to mention that all these articles have been published after 2010, which means that technological advances have enabled researchers to design and fabricate smart contact lenses in the lab. This highlights an emerging prospect of smart contact lens-based products in the future and the prospect of greater functionality and more powerful interface for HMI.

D. Communications

The communications block in smart contact lenses is concerned with transmitting and receiving data. For transmitter, after processing the sensor data with coder and mixer, the output signal will be transmitted by antenna. Consequently, the majority of developments in the communications module is concerned with antenna design. The important antenna design parameters for a contact lens includes return loss, bandwidth, operating frequency, flexibility and vision obstruction.

Smart contact lenses work as an interface in HMI applications, which requires data transmission between the contact lens platform and an external processor. Thus, antennae need to be integrated on the contact lens platform [98]. To maximize the size of the antenna and prevent vision obstruction, researchers have often used a ring-type antenna geometry, as shown in figure 6b.

In comparison to other antennae, the loop antenna is easier to fabricate and avoids vision obstruction, which is why it has been used in many contact lens designs [62], [82], [99]. For example, Chiou *et al.* proposed a dual loop antenna design for both the receiver (Rx) and transmitter (Tx), as demonstrated in fig.6b ii. The return loss of their design was -21 dB at 925 MHz and their -10 dB bandwidth was 21 MHz [43].

From a practical and health perspective, placing an RF source 10 mm away from the contact lens seems unrealistic and hazardous, since exposure to concentrated electromagnetic radiation may cause harm to the eyes. Ting *et al.* proposed loop antenna integrated on contact lens and using pig eyes

to simulate practical situation and measured antenna radiation patterns, antenna gains, and radiation efficiency [100]. Their design can cover the frequency from 1.54 to 6 GHz for ISM band applications, which is suitable for application of wireless ocular physiological monitoring.

In comparison with the loop antennae, spiral antennae demonstrate better performance, since the loop antenna is confined by horizontal polarization. Spiral antennae are more suitable as transmitter due to circular polarization, so that devices in various positions can receive the same amplitude of electric signal. Chen *et al.* designed an antenna with sixteen spiral windings connected in series in a loop for near field communication, as is shown in fig.6b iii, which can transmit data from contact lens to mobile phone [44]. Their design has a distributed multi-layer coil structure, which could eliminate substrate warpage. Kim *et al.* designed a spiral antenna with resonant frequency of 4.1 GHz, which is demonstrated in fig.6b iv. Communication was achieved by coupling the spiral antenna with an external antenna. With different glucose concentrations, the reflection value is different from 3.5 to 4.1 GHz, which could be received and recognized by external receiver [45].

E. Substrate and Interconnect Technology

Finally, all the aforementioned electronic components need to be fabricated on a particular substrate and interconnected with wires. Flexible and stretchable substrates and interconnects are therefore required to ensure user comfort. Below is a discussion regarding the materials as well as the fabrication methods and technologies used for both the contact lens substrate and its interconnects.

1) *Substrate*: Traditionally, contact lenses were fabricated on polymer and silicone hydrogel based substrate [101]. On the other hand, Park *et al.* proposed a novel way to fabricate stretchable contact lenses with a hybrid substrate. A photocurable optical polymer (SPC-414; EOP= 360 MPa) was photolithographically patterned with a Cu sacrificial layer, as shown in figure 6e.iii. These reinforced islands were connected by stretchable and transparent conductors [2]. Moreover, Choi and Park published a concept paper regarding the use of graphene as an effective substrate material for multi-focal contact lenses [26]. They mentioned that a graphene-based contact lens could protect eyes from electromagnetic waves and dehydration. Furthermore, graphene is an extraordinarily flexible and transparent material, which are crucial attributes of future contact lenses.

In comparison with traditional (polymer and silicone hydrogel) contact lens substrates, future devices need better compatibility with electronic components and further investigation into encapsulation materials is necessary to prevent wearer harm from potential electronic hazards.

2) *Interconnects*: Ideally, smart contact lens interconnects need to be highly transparent, conductive, flexible, stretchable and demonstrate low sheet resistance.

Takamatsu *et al.* proposed an electrochemically printed circuit on a contact lens. It was based on the polymerization of 3,4-ethylenedioxythiophene (EDOT) glue at the interface between the circuit and the hydrogel-based substrate. Their design enabled soft contact lenses to be fabricated as an interface with more complex circuits and functionality [48]. Kim *et al.* proposed 3D printed interconnects for smart contact lenses. They used Ag/AgNW composite ink with spray printed method to print the circuit on Polyimide substrate. Their circuit design had a small sheet resistance variation ($0.396 \Omega \cdot \square^{-1}$) when the device was significantly deformed. Moreover, AgNW printed circuit have relatively high conductivity and transparency, which has less heat generation and allows better vision. Their design ensured that deformation would not influence the stability of contact lens operation [52]. Moreover, Alam *et al.* reviewed substrate materials in previous smart contact lenses design and fabrication. They suggested that 3D printing would widely be used in next generation contact lenses.

F. Input/Output Interface

Smart contact lenses need a mechanism to interface with the outside world. As input, we previously discussed how sensors collect data from the lens' surroundings. However, smart contact lenses may need to take action, provide feedback, or to communicate and display information back to the user. Therefore, the I/O Interface is responsible for this important functionality in smart contact lenses for HMI applications.

For example, Quintero *et al.* proposed a design of an artificial iris with smart contact lens and liquid crystal material [6] for vision correction, as demonstrated in fig.6e i. Similar design was also made by Raducanu *et al.* [7] and Vanhaverbeke *et al.* [102]. They manipulate liquid crystal material by voltage variation. The switching of liquid crystal would cause the transparency variation of the contact lens, therefore it can avoid patients with iris diseases exposed to intense light. In addition to artificial iris, Milton *et al.* proposed a novel contact lens design for presbyopia treatment using contact lens and liquid crystal [55], which is shown in fig.6e iv. Their design used the optic and electric properties of liquid crystals. The focus length of the contact lens could be controlled by voltage. Their design could help people with presbyopia could adjust the focus length of the contact lens based on their requirement.

Apart from vision correction module, there are also medical modules such as dry eye treatment module and drug delivery module. Kusam *et al.* designed a dry eye treatment module on contact lens, where electroosmotic flow was generated in fluid conduit by charged hydrogel [28]. This design could help the dry eye disease treatment.

Contact lenses with safety and security module could changes color or transparency based on external environmental variation, which could be realized by liquid crystal or electrochromic material. In fig. 6e v, Kim *et al.* proposed a alarm system using electrochromic material Prussian blue [4]. This contact lens could turn blue automatically to warn its wearer when it detects hazards.

There are also some modules for display use. Chen *et al.* proposed a concept contact lens using light-emitting diodes to achieve augmented reality, as is shown in fig. 6e vi. Apart from academic field, a company called Mojo Vision claims to have developed a smart contact lens with display functionality using microLEDs [103]. They claim that their contact lens could display the size of a grain of sand to share critical information.

These modules could directly or indirectly effect on contact lens user, which is a important role in HMI application. The development of electronic devices and fabrication technology enhanced interaction between smart contact lens and user.

G. Hybrids

As previously mentioned, we categorised the literature on smart contact lenses according to six constituent building blocks. However, some references targeted more than one building block. We grouped these papers in a new block called the "hybrids".

For example, Song *et al.* designed a contact lens for both Glaucoma diagnosis and in situ drug delivery [54]. The contact lens stores drugs using nanopores, which could sustain the drug for up to 30 days. Therefore, this contact lens design targets both glucose sensing and drug delivery.

Chiou *et al.* devised an autonomous contact lens system using RF power [84]. In their design, a radio-frequency identification (RFID) driver chip was used for capacitive sensor control and data transmission. The whole system consumed $110 \mu W$ and was powered by external RF sources. In their design, energy can be harvested from a 30 dB RF source, which was placed 10 to 40 mm away from their contact lens [43]. They designed the contact lens in system level, which involves communication, RFID design, energy harvesting.

Lingley *et al.* devised a smart contact lens with single pixel LCD. This single pixel LCD that was automatically driven by an external RF energy source. Their design focused on both energy harvesting and information display [82].

Kim *et al.* designed a graphene-based silver nanowire (AgNW) hybrid structured sensor for glucose monitoring. The sensor used the same electrochemical principle to transform glucose concentration in tear fluid to electric signal and transmit to receiver via spiral antenna [45]. Silver nanowires were used to improve the electrical and mechanical performance without adversely affecting the sensor's transparency and stretchability. This design involves sensing, communication and interconnection.

Raducanu *et al.* designed an artificial iris system, which can change the transparency with the variation of light intensity of the environment [7]. It is a systematic design which involves communication, power module, sensing, I/O interface and driver electronics.

Furthermore, Quintero *et al.* devised and fabricated a hydrogel-based smart contact lens which could communicate and harvest energy from near-field source. They designed a comprehensive smart contact lens system, including communication, interconnection, energy harvesting and substrate design.

VI. APPLICATIONS

To address RQ3 and according to our review, 58 out of our 83 manuscripts specifically mentioned an application for their contact lenses. We subsequently identified four main areas where these contact lenses were used, which include (i) medicine, (ii) displays, (iii) eye tracking and (iv) vision assistance. From these application areas, the medical field accounts for almost three quarters (74%) of all publications in smart contact lenses, as shown from the results presented in fig. 7.

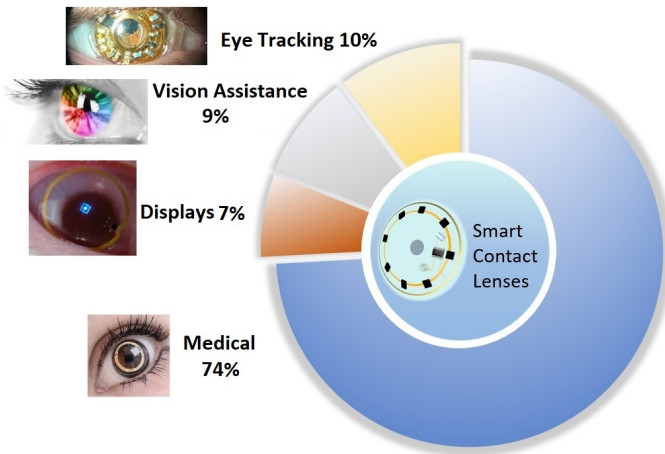


Fig. 7: Pie chart for smart contact lens applications. The pie chart above shows the distribution of the application areas in the reviewed manuscripts.

Medical applications of smart contact lenses include the measurement of corneal temperature [104], intraocular pressure (IOP) [105], [106] and glucose levels [69], [107], [108]. Continuously monitoring these health indicators help improve disease diagnosis and treatment. In addition to these health indicator measurements, contact lenses have also been used for treating dry eye disease [28], [109] and for releasing drugs [54].

Since 2016, smart contact lenses have been used in other non-medical applications. For example, they have been used in applications that include vision assistance, display and eye tracking. In terms of vision assistance, smart contact lenses were used for improving people's vision with ocular defects, such as iris defects [6] and presbyopia [55]. Instead of static or traditional methods of vision correction, these smart contact lenses change their state based on their surrounding environmental conditions. For example, a smart contact lens alarm was demonstrated by Kim *et al* [4] as well as an artificial iris by Quintero *et. al* [6] and Raducanu *et al* [7].

In terms of human-machine interaction (HMI), eye tracking using smart contact lenses has also been demonstrated in

the literature [17], [18], [73]. Contact lens with eye tracking functionality could be used in many scenarios. For instance, in virtual gaming and online education, where there are projected benefits of contact lenses for entertainment applications in comparison to wearable devices that have limitations with accuracy and can be remedied using contact lenses [18]. Additionally, contact lens with display module are also developed to facilitate the HMI. These contact lenses could be used to transmit visualized data, which can be applied in augmented reality applications [56].

Moreover, contact lenses have also been demonstrated for eye tracking applications. Eye tracking is currently a hot topic that enables a computer to detect where the eye is looking. However, current methods rely on cameras and computer vision software as well as signal processing and machine learning algorithms to determine the eye's position. However, these conventional hardware configurations accommodate a limited range of head movement and suffer from poor precision [110]. In contrast, eye-wear based systems have improved accuracy, tracking speed, mobility and portability, which are important attributes for a wearable HMI application [111].

Furthermore, smart contact lenses were used as near eye display (NED) modules. For example, liquid crystal materials were used for displaying information, as demonstrated by the early work of de Smet *et al.* in [112], as well as their most recent work in [6]. The versatility of such materials in contact lenses enabled them to be used for both sensing and display applications [113]. Moreover, the concept of using Light Emitting Diodes (LEDs) in contact lenses for augmented reality (AR) applications were proposed by [56]. Although an experimental setup was not shown, simulation results using CODE V software predicted a high resolution smart contact lens with a wide field of view (FOV) that can move or rotate freely without the need for eye tracking.

In terms of eye and gaze tracking applications, camera-less tracking using contact lenses was demonstrated by Massin *et al.*, which was 2.5 times better than current camera-based eye-trackers [18], [73]. In addition to their improved accuracy, such camera-less systems are more cost effective for eye and gaze tracking applications [114].

VII. CHALLENGES AND DIRECTIONS FOR FUTURE RESEARCH

In this section, we address RQ4, which is concerned with highlighting the challenges and possible research directions facing smart contact lenses. Despite the aforementioned benefits of smart contact lenses for HMI applications, there are still many looming challenges. For example, the driving voltages required to power the various electronic modules are still large (> 1 V). Therefore, since power consumption is high, such smart electronic platforms may be unsafe for human use on the eye. However, thanks to advancements in transistor nanofabrication, which led to a steady reduction in power supply voltage from 1.2 V in 2003 to 0.5 V in 2018, this driving voltage is expected to decrease with the advent of the 2 nm node fabrication process in 2024 [115], [116].

Moreover, since contact lenses are regarded as temporary prostheses, regulatory approval is essential before they can

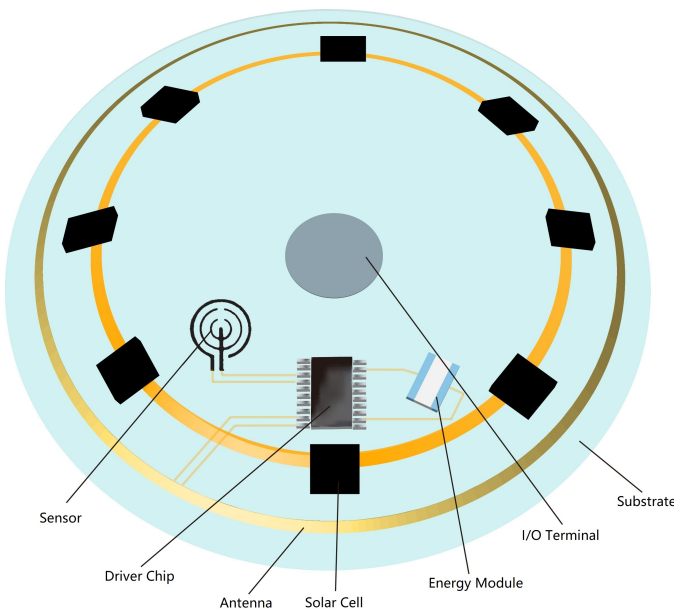


Fig. 8: Futuristic concept of a smart, self-powered contact lens with integrated energy harvesters, antennae, sensors, display module and power management circuitry. Such a contact lens would be a major breakthrough in Human-Machine Interaction.

be used. For example, the U.S.'s Food and Drug Agency (FDA) oversees the safety, effectiveness and manufacturing of contact lenses. Such a process has been criticised as expensive and costly [117], which may hinder the introduction of smart contact lenses in large scale, especially if examination, trialling and practical training by an ophthalmologist is necessary.

Numerous studies have also shown that contact lenses may lead to serious ocular health problems if certain cleaning guidelines are poorly observed [118], [119]. In fact, current soft contact lenses need to be regularly cleaned in an aqueous, pH balanced solution. In that case, what cleaning protocols are required to prevent eye infection or injury from these smart contact lenses? Furthermore, what specially formulated solutions will be used for caring and maintaining these lenses?

Nevertheless, despite these challenges, surveys have shown that contact lens wearers are often more satisfied than regular eye glass wearers [120]. Moreover, in comparison to regular eye glasses, contact lenses help widen the wearer's field of vision as well as reduce spheric and chromatic aberrations. Therefore, further research is needed in developing smart contact lenses with a wide field of view (FOV) that enhances a wearer's impaired vision and enables more text and interface elements to be observed while looking through them. Furthermore, the challenges and in enabling stereoscopic vision and immersion (in comparison to monoscopic vision) are other areas that present opportunities for future research.

Another grand challenge facing smart contact lenses that needs research involves protecting the wearer's sensitive, personal information from data breach and preventing unauthorised access to confidential information. Due to the pervasiveness of mobile phones and the rapid development of Body

Sensor Networks (BSN) [111], secure wireless communication between the contact lens system and other peripheral devices is, therefore, urgently needed.

Moreover, developing an interface that recognises and facilitates interaction with these smart devices is another challenge. For example, how will these smart lenses recognise our gestures? And which gestures will they recognise? Could they be designed to recognise hand movements, eye-movements, or other body part movements? Using eye gaze maybe challenging and requires training, especially since most eye-movements are subconsciously controlled. Furthermore, would artificial intelligence (or other computational techniques) be used to differentiate between head movements, which could be interpreted as a non-verbal cue or a simple posture adjustment of the body? Therefore, further research in this area is needed.

Consequently, based on these developments, it is clear that the smart contact lens of the future will be autonomously driven, contain multiple sensors and will enable data processing and visualisation near the eye. Therefore, based on our analysis of the state-of-the-art, we predict that future self-powered smart contact lenses will be integrated with sensors, power management modules and communication modules, as conceptually shown in figure 8. Moreover, to ensure that such a lens is battery-less, energy needs to be scavenged from its surroundings using a variety of sources that could include solar cells, RF harvesters and thermoelectric generators [91].

VIII. CONCLUSIONS

Contact lenses have evolved from vision correction platforms to advanced tools for healthcare, entertainment as well as we safety and security application. This is now possible thanks to advancements in nanofabrication and microelectronics packaging, where electronic modules can be seamlessly integrated on flexible substrates. In all these applications, the contact lens platform plays an essential role in facilitating the interaction between humans and machines. Therefore, the purpose of this paper was to review the state-of-the-art in smart contact lens technology and its use for Human Machine Interaction. We reviewed 83 articles published during the past 21 years which met our inclusion criteria on smart contact lenses. According to our review, the majority of research on smart or electronic contact lenses was devoted to medical applications, with almost half of all publications focusing on glucose and IOP monitoring. However, during the past five years there has been a surge in publications regarding the use of contact lenses for a wider range of applications, which include medical, eye tracking, vision assistance as well as displays. We discussed the feasibility of smart contact lenses as a more intelligent and powerful interface in HMI applications. We also provided an outlook into the future use of smart contact lenses in other HMI applications. Despite the challenges associated with driving voltages, stereoscopic vision, data security as well as contact lens regulatory approvals, we believe that future trends in Very Large Scale Integration (VLSI), energy harvesting, photonics, wearable computing and nanofabrication will enable these electronic platforms to become a reality.

IX. ACKNOWLEDGEMENTS

This work was partially supported by EPSRC (EP/X034690/1), SNOW: Wearable Nano-Opto-electro-mechanic Systems, and EPSRC (EP/X024989/1)/HORIZON-MSCA-PF, MAGNABLE: Injectable magnetomyography.

REFERENCES

- [1] I. Lahdesmaki, A. J. Shum, and B. A. Parviz, "Possibilities for continuous glucose monitoring by a functional contact lens," *IEEE instrumentation & measurement magazine*, vol. 13, no. 3, pp. 14–17, 2010.
- [2] J. Park, J. Kim, S.-Y. Kim, W. H. Cheong, J. Jang, Y.-G. Park, K. Na, Y.-T. Kim, J. H. Heo, C. Y. Lee *et al.*, "Soft, smart contact lenses with integrations of wireless circuits, glucose sensors, and displays," *Science Advances*, vol. 4, no. 1, p. eaap9841, 2018.
- [3] L. Xinming, C. Yingde, A. W. Lloyd, S. V. Mikhailovsky, S. R. Sandeman, C. A. Howel, and L. Liewen, "Polymeric hydrogels for novel contact lens-based ophthalmic drug delivery systems: A review," *Contact Lens and Anterior Eye*, vol. 31, no. 2, pp. 57–64, 2008.
- [4] M. Kim, Y. Kim, J. Yun, C. Gao, H.-W. Lee, S. W. Lee *et al.*, "An electrochromic alarm system for smart contact lenses," *Sensors and Actuators B: Chemical*, vol. 322, p. 128601, 2020.
- [5] E. González-Arribas, D. Pankratov, S. Gounel, N. Mano, Z. Blum, and S. Shleev, "Transparent and capacitive bioanode based on specifically engineered glucose oxidase," *Electroanalysis*, vol. 28, no. 6, pp. 1290–1297, 2016.
- [6] A. V. Quintero, P. Pérez-Merino, and H. De Smet, "Artificial iris performance for smart contact lens vision correction applications," *Scientific reports*, vol. 10, no. 1, pp. 1–12, 2020.
- [7] B. C. Raducanu, S. Zaliasl, S. Stanzione, C. van Liempd, A. V. Quintero, H. De Smet, J. De Baets, C. van Hoof, and N. Van Helleputte, "An artificial iris asic with high voltage liquid crystal driver, 10-na light range detector and 40-na blink detector for lcd flicker removal," *IEEE Solid-State Circuits Letters*, vol. 3, pp. 506–509, 2020.
- [8] C.-Y. Chen, M. Hasan, and S. Mohan, "Securing real-time internet-of-things," *Sensors*, vol. 18, no. 12, p. 4356, 2018.
- [9] K. W. Wright, "Anatomy and physiology of eye movements," in *Pediatric Ophthalmology and Strabismus*. Springer, 2003, pp. 125–143.
- [10] R. H. Carpenter, *Movements of the Eyes, 2nd Rev.* Pion Limited, 1988.
- [11] R. J. Leigh and D. S. Zee, *The neurology of eye movements*. OUP USA, 2015.
- [12] A. A. Kohli, J. Woo, and M. A. Tamhankar, "Cranial nerve palsies: What's new?" *Advances in Ophthalmology and Optometry*, vol. 3, no. 1, pp. 261–278, 2018.
- [13] P. E. Ludwig, S. Aslam, and C. N. Czyn., "Anatomy, head and neck, eye muscles," Aug 2020. [Online]. Available: <https://www.ncbi.nlm.nih.gov/books/NBK470534/>
- [14] T. Soukupova and J. Cech, "Eye blink detection using facial landmarks," in *21st computer vision winter workshop, Rimske Toplice, Slovenia*, 2016.
- [15] Y.-m. Cheung and Q. Peng, "Eye gaze tracking with a web camera in a desktop environment," *IEEE Transactions on Human-Machine Systems*, vol. 45, no. 4, pp. 419–430, 2015.
- [16] P. M. Corcoran, F. Nanu, S. Petrescu, and P. Bigioi, "Real-time eye gaze tracking for gaming design and consumer electronics systems," *IEEE Transactions on Consumer Electronics*, vol. 58, no. 2, pp. 347–355, 2012.
- [17] A. Tanwear, X. Liang, Y. Liu, A. Vuckovic, R. Ghannam, T. Böhnert, E. Paz, P. P. Freitas, R. Ferreira, and H. Heidari, "Spintronic sensors based on magnetic tunnel junctions for wireless eye movement gesture control," *IEEE Transactions on Biomedical Circuits and Systems*, 2020.
- [18] L. Massin, F. Seguin, V. Nourrit, E. Daniel, C. Lahuec *et al.*, "Smart contact lens applied to gaze tracking," *IEEE Sensors Journal*, vol. 21, no. 1, pp. 455–463, 2020.
- [19] A. Królak and P. Strumiłło, "Eye-blink detection system for human-computer interaction," *Universal Access in the Information Society*, vol. 11, no. 4, pp. 409–419, 2012.
- [20] T. Morris, P. Blenkhorn, and F. Zaidi, "Blink detection for real-time eye tracking," *Journal of Network and Computer Applications*, vol. 25, no. 2, pp. 129–143, 2002.
- [21] J. D. Porter, L. A. Burns, and P. J. May, "Morphological substrate for eyelid movements: innervation and structure of primate levator palpebrae superioris and orbicularis oculi muscles," *Journal of Comparative Neurology*, vol. 287, no. 1, pp. 64–81, 1989.
- [22] M. Leonardi, P. Leuenberger, D. Bertrand, A. Bertsch, and P. Renaud, "A soft contact lens with a mems strain gage embedded for intraocular pressure monitoring," in *TRANSDUCERS'03. 12th International Conference on Solid-State Sensors, Actuators and Microsystems. Digest of Technical Papers (Cat. No. 03TH8664)*, vol. 2. IEEE, 2003, pp. 1043–1046.
- [23] M. Leonardi, E. M. Pitchon, A. Bertsch, P. Renaud, and A. Mermoud, "Wireless contact lens sensor for intraocular pressure monitoring: assessment on enucleated pig eyes," *Acta ophthalmologica*, vol. 87, no. 4, pp. 433–437, 2009.
- [24] J. Pandey, Y.-T. Liao, A. Lingley, R. Mirjalili, B. Parviz, and B. P. Otis, "A fully integrated rf-powered contact lens with a single element display," *IEEE Transactions on Biomedical Circuits and Systems*, vol. 4, no. 6, pp. 454–461, 2010.
- [25] H. Yao, A. Afanasiev, I. Lähdesmäki, and B. A. Parviz, "A dual microscale glucose sensor on a contact lens, tested in conditions mimicking the eye," in *2011 IEEE 24th International Conference on Micro Electro Mechanical Systems*. IEEE, 2011, pp. 25–28.
- [26] K. Choi and H. G. Park, "Smart reinvention of the contact lens with graphene," *ACS nano*, vol. 11, no. 6, pp. 5223–5226, 2017.
- [27] D. F. Rabensteiner, J. Rabensteiner, and C. Faschinger, "The influence of electromagnetic radiation on the measurement behaviour of the triggerfish® contact lens sensor," *BMC ophthalmology*, vol. 18, no. 1, pp. 1–5, 2018.
- [28] S. Kusama, K. Sato, S. Yoshida, and M. Nishizawa, "Self-moisturizing smart contact lens employing electroosmosis," *Advanced Materials Technologies*, vol. 5, no. 1, p. 1900889, 2020.
- [29] A. Khaldi, E. Daniel, L. Massin, C. Kärfelt, F. Ferranti, C. Lahuec, F. Seguin, V. Nourrit *et al.*, "A laser emitting contact lens for eye tracking," *Scientific Reports*, vol. 10, no. 1, pp. 1–8, 2020.
- [30] N. M. Farandos, A. K. Yetisen, M. J. Monteiro, C. R. Lowe, and S. H. Yun, "Contact lens sensors in ocular diagnostics," *Advanced healthcare materials*, vol. 4, no. 6, pp. 792–810, 2015.
- [31] R. C. Tseng, C.-C. Chen, S.-M. Hsu, and H.-S. Chuang, "Contact-lens biosensors," *Sensors*, vol. 18, no. 8, p. 2651, 2018.
- [32] J. Kim, E. Cha, and J.-U. Park, "Recent advances in smart contact lenses," *Advanced Materials Technologies*, vol. 5, no. 1, p. 1900728, 2020.
- [33] R. Ghannam, G. Curia, G. Brante, S. Khosravi, and F. Hua, "Implantable and wearable neuroengineering education: A review of post-graduate programmes," *IEEE Access*, 2020.
- [34] R. Moreddu, D. Vigolo, and A. K. Yetisen, "Contact lens technology: from fundamentals to applications," *Advanced healthcare materials*, vol. 8, no. 15, p. 1900368, 2019.
- [35] "Smart definition and meaning: Collins english dictionary." [Online]. Available: <https://www.collinsdictionary.com/dictionary/english/smart>
- [36] "Electronics definition and meaning — collins english dictionary." [Online]. Available: <https://www.collinsdictionary.com/dictionary/english/electronics>
- [37] "Wireless definition and meaning: Collins english dictionary." [Online]. Available: <https://www.collinsdictionary.com/dictionary/english/wireless>
- [38] K. Kuhn, C. Kenyon, A. Kornfeld, M. Liu, A. Maheshwari, W.-k. Shih, S. Sivakumar, G. Taylor, P. VanDerVoorn, and K. Zawadzki, "Managing process variation in intel's 45nm cmos technology," *Intel Technology Journal*, vol. 12, no. 2, 2008.
- [39] H. Yao, A. J. Shum, M. Cowan, I. Lähdesmäki, and B. A. Parviz, "A contact lens with embedded sensor for monitoring tear glucose level," *Biosensors and Bioelectronics*, vol. 26, no. 7, pp. 3290–3296, 2011.
- [40] G.-Z. Chen, I.-S. Chan, and D. C. Lam, "Capacitive contact lens sensor for continuous non-invasive intraocular pressure monitoring," *Sensors and Actuators A: Physical*, vol. 203, pp. 112–118, 2013.
- [41] Y. Zhang, Y. Chen, T. Man, D. Huang, X. Li, H. Zhu, and Z. Li, "High resolution non-invasive intraocular pressure monitoring by use of graphene woven fabrics on contact lens," *Microsystems & nanoengineering*, vol. 5, no. 1, pp. 1–8, 2019.
- [42] A. Vasquez Quintero, R. Arai, Y. Yamazaki, T. Sato, and H. De Smet, "Near-field communication powered hydrogel-based smart contact lens," *Advanced Materials Technologies*, vol. 5, no. 12, p. 2000702, 2020.
- [43] J.-C. Chiou, S.-H. Hsu, Y.-T. Liao, Y.-C. Huang, G.-T. Yeh, C.-K. Kuei, and K.-S. Dai, "Toward a wirelessly powered on-lens intraocular

- pressure monitoring system," *IEEE journal of biomedical and health informatics*, vol. 20, no. 5, pp. 1216–1224, 2016.
- [44] L. R. Chen, G. Shaker, and S. Safavi-Naeini, "Warp-free antenna for smart contact lens applications," in *2017 IEEE International Symposium on Antennas and Propagation & USNC/URSI National Radio Science Meeting*. IEEE, 2017, pp. 1293–1294.
- [45] J. Kim, M. Kim, M.-S. Lee, K. Kim, S. Ji, Y.-T. Kim, J. Park, K. Na, K.-H. Bae, H. K. Kim *et al.*, "Wearable smart sensor systems integrated on soft contact lenses for wireless ocular diagnostics," *Nature communications*, vol. 8, no. 1, pp. 1–8, 2017.
- [46] A. R. Lingley, B. P. Otis, T. T. Shen, and B. A. Parviz, "A contact lens with integrated micro solar cells," *Microsystem technologies*, vol. 18, no. 4, pp. 453–458, 2012.
- [47] M. Falk, V. Andoralov, Z. Blum, J. Sotres, D. B. Suyatin, T. Ruzgas, T. Arnebrant, and S. Shleev, "Biofuel cell as a power source for electronic contact lenses," *Biosensors and Bioelectronics*, vol. 37, no. 1, pp. 38–45, 2012.
- [48] T. Takamatsu, Y. Chen, T. Yoshimasu, M. Nishizawa, and T. Miyake, "Highly efficient, flexible wireless-powered circuit printed on a moist, soft contact lens," *Advanced Materials Technologies*, vol. 4, no. 5, p. 1800671, 2019.
- [49] H. Lee, S. Kim, K.-B. Kim, and J.-W. Choi, "Scalable fabrication of flexible thin-film batteries for smart lens applications," *Nano Energy*, vol. 53, pp. 225–231, 2018.
- [50] J. Park, D. B. Ahn, J. Kim, E. Cha, B.-S. Bae, S.-Y. Lee, and J.-U. Park, "Printing of wirelessly rechargeable solid-state supercapacitors for soft, smart contact lenses with continuous operations," *Science advances*, vol. 5, no. 12, p. eaay0764, 2019.
- [51] C. Jeon, J. Koo, K. Lee, M. Lee, S.-K. Kim, S. Shin, S. K. Hahn, and J.-Y. Sim, "A smart contact lens controller ic supporting dual-mode telemetry with wireless-powered backscattering lsk and em-radiated rf transmission using a single-loop antenna," *IEEE Journal of Solid-State Circuits*, vol. 55, no. 4, pp. 856–867, 2020.
- [52] H. Kim, J. Kim, J. Kang, and Y.-W. Song, "Three-dimensionally printed interconnects for smart contact lenses," *ACS applied materials & interfaces*, vol. 10, no. 33, pp. 28 086–28 092, 2018.
- [53] A. Vásquez Quintero, R. Verplancke, H. De Smet, and J. Vanfleteren, "Stretchable electronic platform for soft and smart contact lens applications," *Advanced Materials Technologies*, vol. 2, no. 8, p. 1700073, 2017.
- [54] C. Song, G. Ben-Shlomo, and L. Que, "A multifunctional smart soft contact lens device enabled by nanopore thin film for glaucoma diagnostics and in situ drug delivery," *Journal of Microelectromechanical Systems*, vol. 28, no. 5, pp. 810–816, 2019.
- [55] H. E. Milton, P. B. Morgan, J. H. Clamp, and H. F. Gleeson, "Electronic liquid crystal contact lenses for the correction of presbyopia," *Optics express*, vol. 22, no. 7, pp. 8035–8040, 2014.
- [56] J. Chen, L. Mi, C. P. Chen, H. Liu, J. Jiang, W. Zhang, and Y. Liu, "A foveated contact lens display for augmented reality," in *Optical Architectures for Displays and Sensing in Augmented, Virtual, and Mixed Reality (AR, VR, MR)*, vol. 11310. International Society for Optics and Photonics, 2020, p. 1131004.
- [57] Y.-C. Huang, G.-T. Yeh, T.-S. Yang, and J.-C. Chiou, "A contact lens sensor system with a micro-capacitor for wireless intraocular pressure monitoring," in *SENSORS, 2013 IEEE*. IEEE, 2013, pp. 1–4.
- [58] B. Maeng, H.-k. Chang, and J. Park, "Photonic crystal-based smart contact lens for continuous intraocular pressure monitoring," *Lab on a Chip*, vol. 20, no. 10, pp. 1740–1750, 2020.
- [59] S.-H. Hsu, J.-C. Chiou, Y.-T. Liao, T.-S. Yang, C.-K. Kuei, T.-W. Wu, and Y.-C. Huang, "An rfid-based on-lens sensor system for long-term iop monitoring," in *2015 37th Annual International Conference of the IEEE Engineering in Medicine and Biology Society (EMBC)*. IEEE, 2015, pp. 7526–7529.
- [60] H. Cheng, B. Jeng, C. Chen, H. Huang, J.-C. Chiou, and C. Luo, "The rectenna design on contact lens for wireless powering of the active intraocular pressure monitoring system," in *2013 35th Annual International Conference of the IEEE Engineering in Medicine and Biology Society (EMBC)*. IEEE, 2013, pp. 3447–3450.
- [61] G.-T. Yeh, T.-W. Wu, S.-W. Tsai, S.-H. Hsu, and J.-C. Chiou, "Toward a wireless contact lens sensor system with a micro-capacitor for intraocular pressure monitoring on in-vitro porcine eye," in *2015 IEEE SENSORS*. IEEE, 2015, pp. 1–4.
- [62] J.-C. Chiou, S.-H. Hsu, C.-K. Kuei, and T.-W. Wu, "An addressable uhf epcglobal class1 gen2 sensor ic for wireless iop monitoring on contact lens," in *VLSI Design, Automation and Test (VLSI-DAT)*. IEEE, 2015, pp. 1–4.
- [63] J.-C. Chiou, S.-H. Hsu, Y.-C. Huang, G.-T. Yeh, K.-S. Dai, and C.-K. Kuei, "Towards a fully integrated, wirelessly powered, and ordinarily equipped on-lens system for successive dry eye syndrome diagnosis," in *2017 Symposium on VLSI Technology*. IEEE, 2017, pp. T100–T101.
- [64] J.-C. Chiou, Y.-C. Huang, and G.-T. Yeh, "A capacitor-based sensor and a contact lens sensing system for intraocular pressure monitoring," *Journal of Micromechanics and Microengineering*, vol. 26, no. 1, p. 015001, 2015.
- [65] C. Luo, S. H. Ting, B. M. Jeng, W. S. Chen, J. Chiou *et al.*, "Dual-band loop antenna on soft contact lens for wireless ocular physiological monitoring," *Innovation, Communication and Engineering*, p. 133, 2013.
- [66] M. Leonardi, P. Leuenberger, D. Bertrand, A. Bertsch, and P. Renaud, "First steps toward noninvasive intraocular pressure monitoring with a sensing contact lens," *Investigative ophthalmology & visual science*, vol. 45, no. 9, pp. 3113–3117, 2004.
- [67] C.-K. Tseng, Y.-C. Huang, S.-W. Tsai, G.-T. Yeh, C.-H. Chang, and J.-C. Chiou, "Design and fabricate a contact lens sensor with a micro-inductor embedded for intraocular pressure monitoring," in *SENSORS, 2012 IEEE*. IEEE, 2012, pp. 1–4.
- [68] K. Hayashi, S. Arata, G. Xu, S. Murakami, C. D. Bui, T. Doike, M. Matsunaga, A. Kobayashi, and K. Niitsu, "Design of 385 x 385 μm^2 0.165 v 270pw fully-integrated supply-modulated ooc transmitter in 65nm cmos for glasses-free, self-powered, and fuel-cell-embedded continuous glucose monitoring contact lens," in *Proceedings of the 24th Asia and South Pacific Design Automation Conference*, 2019, pp. 5–6.
- [69] S.-K. Kim, J. Koo, G.-H. Lee, C. Jeon, J. W. Mok, B. H. Mun, K. J. Lee, E. Kamrani, C.-K. Joo, S. Shin *et al.*, "Wireless smart contact lens for diabetic diagnosis and therapy," *Science Advances*, vol. 6, no. 17, p. eaba3252, 2020.
- [70] Y. Liao, H. Yao, A. Lingley, B. Parviz, and B. P. Otis, "A 3- μW cmos glucose sensor for wireless contact-lens tear glucose monitoring," *IEEE Journal of Solid-State Circuits*, vol. 47, no. 1, pp. 335–344, 2012.
- [71] C. Jeon, J. Koo, K. Lee, S.-K. Kim, S. K. Hahn, B. Kim, H.-J. Park, and J.-Y. Sim, "A 143nw glucose-monitoring smart contact lens ic with a dual-mode transmitter for wireless-powered backscattering and rf-radiated transmission using a single loop antenna," in *2019 Symposium on VLSI Circuits*. IEEE, 2019, pp. C294–C295.
- [72] H. Yao, C. Marcheselli, A. Afanasiev, I. Lähdesmäki, and B. Parviz, "A soft hydrogel contact lens with an encapsulated sensor for tear glucose monitoring," in *2012 IEEE 25th International Conference on Micro Electro Mechanical Systems (MEMS)*. IEEE, 2012, pp. 769–772.
- [73] L. Massin, V. Nourrit, C. Lahuec, F. Seguin, L. Adam, E. Daniel *et al.*, "Development of a new scleral contact lens with encapsulated photodetectors for eye tracking," *Optics Express*, vol. 28, no. 19, pp. 28 635–28 647, 2020.
- [74] K. Y. Kim, S. Y. Lee, and H. C. Kim, "A wireless measurement system for three-dimensional ocular movement using the magnetic contact lens sensing technique," in *The 26th Annual International Conference of the IEEE Engineering in Medicine and Biology Society*, vol. 1. IEEE, 2004, pp. 2287–2289.
- [75] R. Yin, Z. Xu, M. Mei, Z. Chen, K. Wang, Y. Liu, T. Tang, M. K. Priyadarshi, X. Meng, S. Zhao *et al.*, "Soft transparent graphene contact lens electrodes for conformal full-cornea recording of electroretinogram," *Nature communications*, vol. 9, no. 1, pp. 1–11, 2018.
- [76] A. Heller and B. Feldman, "Electrochemical glucose sensors and their applications in diabetes management," *Chemical reviews*, vol. 108, no. 7, pp. 2482–2505, 2008.
- [77] M. Davanger, A. Ringvold, and S. Blika, "The probability of having glaucoma at different iop levels," *Acta ophthalmologica*, vol. 69, no. 5, pp. 565–568, 1991.
- [78] Y. Liu, H. Khanbareh, M. A. Halim, A. Feeney, X. Zhang, H. Heidari, and R. Ghannam, "Piezoelectric energy harvesting for self-powered wearable upper limb applications," *Nano Select*, feb 2021.
- [79] R. Ghannam, Y. Hao, Y. Liu, and Y. Xiao, *Energy Harvesting for Wearable and Portable Devices*. John Wiley & Sons, Ltd, 2021, ch. 7, pp. 129–152. [Online]. Available: <https://onlinelibrary.wiley.com/doi/abs/10.1002/9781119644316.ch7>
- [80] M. A. Wahba, A. S. Ashour, and R. Ghannam, "Prediction of harvestable energy for self-powered wearable healthcare devices: Filling a gap," *IEEE Access*, vol. 8, pp. 170 336–170 354, 2020.
- [81] J. Pandey, Y.-T. Liao, A. Lingley, B. Parviz, and B. Otis, "Toward an active contact lens: Integration of a wireless power harvesting ic," in *2009 IEEE biomedical circuits and systems conference*. IEEE, 2009, pp. 125–128.
- [82] A. R. Lingley, M. Ali, Y. Liao, R. Mirjalili, M. Klöner, M. Söpanen, S. Suihkonen, T. Shen, B. Otis, H. Lipsanen *et al.*, "A single-pixel

- wireless contact lens display,” *Journal of Micromechanics and Microengineering*, vol. 21, no. 12, p. 125014, 2011.
- [83] Y.-J. Kim, J. Maeng, and P. P. Irazoqui, “Eyeglasses-powered, contact lens-like platform with high power transfer efficiency,” *Biomedical Microdevices*, vol. 17, no. 4, p. 75, 2015.
- [84] J.-C. Chiou, S.-H. Hsu, Y.-C. Huang, G.-T. Yeh, W.-T. Liou, and C.-K. Kuei, “A wirelessly powered smart contact lens with reconfigurable wide range and tunable sensitivity sensor readout circuitry,” *Sensors*, vol. 17, no. 1, p. 108, 2017.
- [85] Q. Li, Z. Liu, F. Qiao, X. Wu, C. Wang, Q. Wei, and H. Yang, “From ‘mission: Impossible’ to mission possible: Fully flexible intelligent contact lens for image classification with analog-to-information processing,” in *2017 IEEE International Symposium on Circuits and Systems (ISCAS)*. IEEE, 2017, pp. 1–4.
- [86] L. Chen, B. Milligan, T. Qu, L. Jeevananthan, G. Shaker, and S. Safavi-Naeini, “Cellular wireless energy harvesting for smart contact lens applications [education corner],” *IEEE Antennas and Propagation Magazine*, vol. 60, no. 5, pp. 108–124, 2018.
- [87] K. Hayashi, S. Arata, G. Xu, S. Murakami, C. D. Bui, T. Doike, M. Matsunaga, A. Kobavashi, and K. Niitsu, “A $385\mu\text{m} \times 385\mu\text{m} 0.165 \times 0.27 \text{ nw}$ fully-integrated supply-modulated ocmos tx in 65nm cmos for glasses-free, self-powered, and fuel-cell-embedded continuous glucose monitoring contact lens,” in *2018 IEEE Biomedical Circuits and Systems Conference (BioCAS)*. IEEE, 2018, pp. 1–4.
- [88] J.-C. Chiou, C.-E. Shieh, K.-T. Yeh, and S.-H. Hsu, “The methodology to make smart contact lens become a semi-passive system,” in *2019 IEEE 32nd International Conference on Micro Electro Mechanical Systems (MEMS)*. IEEE, 2019, pp. 1006–1009.
- [89] M. Nasreldin, R. Delattre, M. Ramuz, C. Lahuec, T. Djenizian, J.-L. de Bougrenet de la Tocnaye *et al.*, “Flexible micro-battery for powering smart contact lens,” *Sensors*, vol. 19, no. 9, p. 2062, 2019.
- [90] T. Takamatsu, Y. Sijie, F. Shujie, L. Xiaohan, and T. Miyake, “Multifunctional high-power sources for smart contact lenses,” *Advanced Functional Materials*, vol. 30, no. 29, p. 1906225, 2020.
- [91] Y. Xia, H. Heidari, H. Fan, and R. Ghannam, “Hybrid microenergy harvesters for smart contact lenses,” in *2020 27th IEEE International Conference on Electronics, Circuits and Systems (ICECS)*, 2020, pp. 1–2.
- [92] R. C. Reid, S. D. Minter, and B. K. Gale, “Contact lens biofuel cell tested in a synthetic tear solution,” *Biosensors and Bioelectronics*, vol. 68, pp. 142–148, 2015.
- [93] M. Frei, J. Martin, S. Kindler, G. Cristiano, R. Zengerle, and S. Kerzenmacher, “Power supply for electronic contact lenses: Abiotic glucose fuel cells vs. mg/air batteries,” *Journal of Power Sources*, vol. 401, pp. 403–414, 2018.
- [94] R. Hinchet, H.-J. Yoon, H. Ryu, M.-K. Kim, E.-K. Choi, D.-S. Kim, and S.-W. Kim, “Transcutaneous ultrasound energy harvesting using capacitive triboelectric technology,” *Science*, vol. 365, no. 6452, pp. 491–494, 2019.
- [95] D. T. Markus and M. C. Hayes, “Piezoelectric energy harvesting contact lens,” Jul. 17 2018, uS Patent 10,025,118.
- [96] E. Y. Chow, A. L. Chlebowsky, and P. P. Irazoqui, “A miniature-implantable rf-wireless active glaucoma intraocular pressure monitor,” *IEEE Transactions on Biomedical Circuits and Systems*, vol. 4, no. 6, pp. 340–349, 2010.
- [97] A. Donida, G. Di Dato, P. Cuzolo, M. Sala, F. Piffaretti, P. Orsatti, and D. Barretto, “A circadian and cardiac intraocular pressure sensor for smart implantable lens,” *IEEE Transactions on Biomedical Circuits and Systems*, vol. 9, no. 6, pp. 777–789, 2015.
- [98] M. Yuan, R. Das, R. Ghannam, Y. Wang, J. Reboud, R. Fromme, F. Moradi, and H. Heidari, “Electronic contact lens: A platform for wireless health monitoring applications,” *Advanced Intelligent Systems*, vol. 2, no. 4, p. 1900190, 2020.
- [99] T. Takamatsu, Y. Sijie, F. Shujie, L. Xiaohan, and T. Miyake, “Multifunctional high-power sources for smart contact lenses,” *Advanced Functional Materials*, p. 1906225, 2019.
- [100] S.-H. Ting, B.-M. Jeng, W.-S. Chen, J.-C. Chiou, and C.-H. Luo, “Broadband loop antenna on soft contact lens for wireless ocular physiological monitoring,” *International Journal of Antennas and Propagation*, vol. 2014, 2014.
- [101] C. S. A. Musgrave and F. Fang, “Contact lens materials: a materials science perspective,” *Materials*, vol. 12, no. 2, p. 261, 2019.
- [102] C. Vanhaverbeke, R. Verplancke, J. De Smet, D. Cuypers, and H. De Smet, “Microfabrication of a spherically curved liquid crystal display enabling the integration in a smart contact lens,” *Displays*, vol. 49, pp. 16–25, 2017.
- [103] “Mojo vision,” <https://www.mojo.vision/>, 2021, accessed: 2021-11-26.
- [104] J. B. Kinn and R. A. Tell, “A liquid-crystal contact-lens device for measurement of corneal temperature,” *IEEE Transactions on Biomedical Engineering*, no. 5, pp. 387–388, 1973.
- [105] S. C. Xu, A. C. Gauthier, and J. Liu, “The application of a contact lens sensor in detecting 24-hour intraocular pressure-related patterns,” *Journal of ophthalmology*, vol. 2016, 2016.
- [106] S. Kingman, “Glaucoma is second leading cause of blindness globally,” *Bulletin of the World Health Organization*, vol. 82, pp. 887–888, 2004.
- [107] Y.-R. Lin, C.-C. Hung, H.-Y. Chiu, P.-H. Chang, B.-R. Li, S.-J. Cheng, J.-W. Yang, S.-F. Lin, and G.-Y. Chen, “Noninvasive glucose monitoring with a contact lens and smartphone,” *Sensors*, vol. 18, no. 10, p. 3208, 2018.
- [108] S. Kim, H.-J. Jeon, S. Park, D. Y. Lee, and E. Chung, “tear glucose measurement by reflectance spectrum of a nanoparticle embedded contact lens,” *Scientific Reports*, vol. 10, no. 1, pp. 1–8, 2020.
- [109] S. Tinku, A. Adami, and L. Lorenzelli, “State of the art and perspectives on the fabrication of functional contact lenses,” in *Proceedings of the 2013 ACM conference on Pervasive and ubiquitous computing adjunct publication*, 2013, pp. 397–404.
- [110] T. T. Bruny t, E. Drew, D. L. Weaver, and J. G. Elmore, “A review of eye tracking for understanding and improving diagnostic interpretation,” *Cognitive research: principles and implications*, vol. 4, no. 1, pp. 1–16, 2019.
- [111] R. Gravina and G. Fortino, “Wearable body sensor networks: state-of-the-art and research directions,” *IEEE Sensors Journal*, vol. 21, no. 11, pp. 12 511–12 522, 2020.
- [112] J. De Smet, A. Avci, P. Joshi, D. Schaubroeck, D. Cuypers, and H. De Smet, “Progress toward a liquid crystal contact lens display,” *Journal of the Society for Information Display*, vol. 21, no. 9, pp. 399–406, 2013.
- [113] R. Ghannam, Y. Xia, D. Shen, F. A. Fernandez, H. Heidari, and V. A. Roy, “Reconfigurable surfaces using fringing electric fields from nanostructured electrodes in nematic liquid crystals,” *Advanced Theory and Simulations*, p. 2100058, 2021.
- [114] X. Liang, A. Tanwear, Y. Liu, M. Yuan, A. Vuckovic, R. Ghannam, and H. Heidari, “Live demonstration: Gaze following system for noninvasively testing electronic contact lens,” in *2020 27th IEEE International Conference on Electronics, Circuits and Systems (ICECS)*. IEEE, 2020, pp. 1–2.
- [115] N. H. Weste and D. Harris, *CMOS VLSI design: a circuits and systems perspective*. Pearson Education, 2015.
- [116] IEEE, “International roadmap for devices and systems (irds™) 2021 edition,” <https://irds.ieee.org/editions/2021>, 2021, accessed: 2021-11-17.
- [117] G. A. V. Norman, “Drugs, devices, and the FDA: Part 1,” *JACC: Basic to Translational Science*, vol. 1, no. 3, pp. 170–179, apr 2016.
- [118] T. Sengor, S. A. Kurna, A. Altun, M. Ircek, S. F. Aki, and S. Aksoy, “Contact lens-related acanthamoeba keratitis and accompanying dacryoadenitis,” *Eye & contact lens*, vol. 41, no. 4, pp. 204–209, 2015.
- [119] T. Şengör, S. Alkibay, A. E. Sertoğlu, and S. A. Kurna, “Survey to determine perceptions and practices in contact lens use and identify key features of safe use education,” *Turkish journal of ophthalmology*, vol. 48, no. 6, p. 288, 2018.
- [120] L. Dias, R. E. Manny, E. Weissberg, and K. D. Fern, “Myopia, contact lens use and self-esteem,” *Ophthalmic and Physiological Optics*, vol. 33, no. 5, pp. 573–580, 2013.