

Fundamental deficits of auditory perception in Wernicke's aphasia

Article

Accepted Version

Robson, Holly, Grube, Manon, Lambon Ralph, Matthew, Griffiths, Timothy and Sage, Karen (2012) Fundamental deficits of auditory perception in Wernicke's aphasia. *Cortex*, 49 (7). pp. 1808-1822. ISSN 0010-9452 doi: <https://doi.org/10.1016/j.cortex.2012.11.012> Available at <https://centaur.reading.ac.uk/30229/>

It is advisable to refer to the publisher's version if you intend to cite from the work. See [Guidance on citing](#).

To link to this article DOI: <http://dx.doi.org/10.1016/j.cortex.2012.11.012>

Publisher: Elsevier

All outputs in CentAUR are protected by Intellectual Property Rights law, including copyright law. Copyright and IPR is retained by the creators or other copyright holders. Terms and conditions for use of this material are defined in the [End User Agreement](#).

www.reading.ac.uk/centaur

CentAUR

Central Archive at the University of Reading

Reading's research outputs online



Accepted Manuscript

Fundamental deficits of auditory perception in Wernicke's aphasia

Holly Robson, Manon Grube, Matthew A. Lambon Ralph, Timothy D. Griffiths, Karen Sage



PII: S0010-9452(12)00331-0

DOI: [10.1016/j.cortex.2012.11.012](https://doi.org/10.1016/j.cortex.2012.11.012)

Reference: CORTEX 943

To appear in: *CORTEX*

Received Date: 13 February 2012

Revised Date: 27 November 2012

Accepted Date: 27 November 2012

Please cite this article as: Robson H, Grube M, Lambon Ralph MA, Griffiths TD, Sage K, Fundamental deficits of auditory perception in Wernicke's aphasia, *CORTEX* (2013), doi: 10.1016/j.cortex.2012.11.012.

This is a PDF file of an unedited manuscript that has been accepted for publication. As a service to our customers we are providing this early version of the manuscript. The manuscript will undergo copyediting, typesetting, and review of the resulting proof before it is published in its final form. Please note that during the production process errors may be discovered which could affect the content, and all legal disclaimers that apply to the journal pertain.

Fundamental deficits of auditory perception in Wernicke's aphasia

Holly ROBSON*^{1,3}, Manon GRUBE^{†2}, Matthew A. LAMBON RALPH¹, Timothy D. GRIFFITHS², Karen SAGE¹.

For submission to Cortex

1 Neuroscience and Aphasia Research Unit, University of Manchester, UK

2 Newcastle Auditory Group, Medical School, Newcastle University, Newcastle-upon-Tyne, UK

3 Psychology and Clinical Language Sciences, University of Reading, UK

* Correspondence to:

Holly Robson

Department of Psychology and Clinical Language Sciences, University of Reading, Earley Gate, Reading, RG6 7BE

Email: h.v.robson@reading.ac.uk or manon.grube@newcastle.ac.uk

[†] Contributions by Manon Grube are of sufficient magnitude to warrant joint first authorship

Keywords: Auditory processing, Wernicke's aphasia, comprehension, frequency, frequency modulation, dynamic modulation

Abbreviations: BDAE – Boston Diagnostic Aphasia Examination, PPT – The Pyramids and Palm Tree test, RCPM – Raven's Colour Progressive Matrices, FM – frequency modulation, DM – dynamic modulation

Running title: Auditory deficit in Wernicke's aphasia

Word count: 7026 (excluding abstract, references, tables and figures).

Funding: This work was supported by a Stroke Association Allied Health Professional Research Bursary (TSAB2008/01 to HR, KS and MALR) and an MRC programme grant (G0501632 to MALR).

Acknowledgements: We would like to thank all the participants and their families for giving up their time to make this research possible. Thanks to Professor D. Moore, Professor C. Plack and Dr. K. Munro for their helpful suggestions. Thanks to K. Wilbraham for his expertise in intensity measurement.

Abstract

Objective: This work investigates the nature of the comprehension impairment in Wernicke's aphasia, by examining the relationship between deficits in auditory processing of fundamental, non-verbal acoustic stimuli and auditory comprehension. Wernicke's aphasia, a condition resulting in severely disrupted auditory comprehension, primarily occurs following a cerebrovascular accident (CVA) to the left temporo-parietal cortex. Whilst damage to posterior superior temporal areas is associated with auditory *linguistic* comprehension impairments, functional imaging indicates that these areas may not be specific to speech processing but part of a network for generic auditory analysis. **Methods:** We examined analysis of basic acoustic stimuli in Wernicke's aphasia participants (n = 10) using auditory stimuli reflective of theories of cortical auditory processing and of speech cues. Auditory spectral, temporal and spectro-temporal analysis was assessed using pure tone frequency discrimination, frequency modulation (FM) detection and the detection of dynamic modulation (DM) in "moving ripple" stimuli. All tasks used criterion-free, adaptive measures of threshold to ensure reliable results at the individual level. **Results:** Participants with Wernicke's aphasia showed normal frequency discrimination but significant impairments in FM and DM detection, relative to age- and hearing-matched controls at the group level (n = 10). At the individual level, there was considerable variation in performance, and thresholds for both frequency and dynamic modulation detection correlated significantly with auditory comprehension abilities in the Wernicke's aphasia participants. **Conclusion:** These results demonstrate the co-occurrence of a deficit in fundamental auditory processing of temporal and spectrotemporal nonverbal stimuli in Wernicke's aphasia, which may have a causal contribution to the auditory language comprehension impairment. Results are discussed in the context of traditional neuropsychology and current models of cortical auditory processing.

1. Introduction

Wernicke's aphasia (WA) is an acquired language impairment characterised by severely impaired single word comprehension and repetition with fluent but disordered speech. WA most commonly results from a cerebrovascular accident to the left posterior temporo-parietal cortex, affecting areas involved in semantic, phonological and auditory processing. The close proximity of these posterior temporal lobe language-related cognitive systems often results in lesions to this region impacting multiple systems. As a result, WA is a behaviourally and cognitively heterogeneous disorder. The presence of semantic and phonological impairments have been documented in WA (Baker et al., 1981; Blumstein et al., 1977; De Renzi et al., 1972; Ogar et al., 2011; Robson et al., 2012b). In contrast, while auditory processing deficits have been suggested in WA (Auerbach et al., 1982; Kirshner et al., 1981; Polster and Rose, 1998), they have been little explored experimentally. This study investigated fundamental, non-linguistic auditory processing in WA in terms of current models of cortical auditory processing and explored the relationship with auditory language comprehension.

Whilst WA has been shown to be globally cognitively heterogeneous, the classical view suggested an instability in phonological word-form representations as the cause of the comprehension deficit (Luria, 1976; Luria and Hutton, 1977). This view is consistent with recent behavioural findings that suggest a phonological impairment is a critical cognitive component of WA (Robson et al., 2012b) and the classical lesion distribution in WA, which overlaps with phonological processing regions in the left superior temporal lobe (Price et al., 2005). This study investigated participants who could be described as having *classical* WA, i.e. individuals with core phonological deficits. Two pieces of evidence, however, add to the previous proposals that phonological deficits in WA may be associated with a more fundamental impairment in auditory analysis. Firstly, behavioural work has shown that

individuals with WA can have deficits in discriminating phonemes with very different acoustic structures, for instance in distinguishing a /b/ from an /f/ (Robson et al., 2012a). If only damage to more abstract phonological representations had occurred, one might expect that early auditory processing would still allow detection of a difference between the stimuli based on their considerably different acoustic structure. Secondly, lesions in WA frequently include primary and non-primary auditory regions in the left hemisphere (Bogen and Bogen, 1976; Ogar et al., 2011). These regions respond to both generic and speech-related acoustic stimuli: noise (Binder et al., 2000), pure tones (Binder et al., 2000; Hall et al., 2000), modulated tones (Binder et al., 2000; Hall et al., 2000), frequency sweeps (Husain et al., 2004), harmonic sounds (Menon et al., 2002), and phonological stimuli (e.g. Benson et al., 2001; Binder et al., 2000; Price, 2010; Scott et al., 2006). These neural activation patterns imply that speech and non-speech perception systems may be subserved by the same, or highly overlapping, cortical network.

Neural activations in response to verbal and non-verbal sounds (in contrast to rest) are strongly bilateral. However, contrasts between different types of acoustic stimuli reveal differential response patterns, reflecting a hierarchical and in part lateralized organisation within the network. The auditory cortices display a functional architecture similar to the homologous organisation intensively studied in the macaque brain (Chevillet et al., 2011; Petkov et al., 2006). Primary auditory regions appear maximally responsive to the most structurally simple auditory stimuli; with the surrounding secondary and tertiary association auditory cortices responding preferentially to increasingly complex auditory stimuli (Rauschecker and Tian, 2004; Tian and Rauschecker, 2004). In addition, hemispheric asymmetries between the left and right hemisphere have been proposed, whereby the left and right auditory cortices display differential sensitivity to acoustic properties. Specifically, the right hemisphere has been suggested to process spectral information (how energy is

distributed across the frequency spectrum) (Schonwiesner et al., 2005a, b; Zatorre and Belin, 2001) and of changes in the spectrum over long time windows of several hundreds of milliseconds (Boemio et al., 2005), while the left hemisphere has been proposed to preferentially respond to rapid changes over shorter time windows of less than 50ms (Boemio et al., 2005).

The lesion distribution in WA corresponds to left hemisphere regions implicated in both speech and non-speech auditory analysis, but leaves the possibility that intact right hemisphere auditory structures could be able to support non-verbal auditory analysis. However, current neuropsychological evidence indicates that unilateral brain lesions can cause fundamental auditory processing impairments, which are, for the most part, consistent with the neuroimaging literature and theories of auditory network organisation. Non-verbal auditory processing deficits have been identified in a range of unilateral lesions with mixed aetiology including CVA (Biedermann et al., 2008; Bungert-Kahl et al., 2004; Divenyi and Robinson, 1989; Fink et al., 2006; Robin et al., 1990), temporal or frontal lobectomy following epilepsy (Samson and Zatorre, 1988; Samson et al., 2002) and tumour (von Steinbuchel et al., 1999). Those studies demonstrated dissociations between groups of individuals with right and left hemisphere pathology. Individuals with right-hemisphere lesions show a higher incidence and more prominent impairments for spectrally based judgement tasks (such as frequency discrimination, pitch matching and timbre analysis), whilst individuals with left-hemisphere lesions show more frequent and severe impairments in temporal judgment tasks (including gap detection, pattern judgments and click fusion) (Divenyi and Robinson, 1989; Robin et al., 1990; Samson and Zatorre, 1988; Samson et al., 2002). In particular, auditory temporal processing impairments have been associated with (pure) word deafness; a condition resulting in an isolated speech perception deficit with intact speech production, typically resulting from bilateral lesions (Albert and Bear, 1974;

Auerbach et al., 1982; Griffiths et al., 2010; Otsuki et al., 1998; Pinard et al., 2002; Wang et al., 2000), and in approximately 30% from unilateral lesions to the left superior temporal lobe (Poeppel, 2001). Such individuals show impairments in discriminating verbal and non-verbal stimuli containing rapid temporal modulations (Albert and Bear, 1974; Slevc et al., 2011; Stefanatos et al., 2005), thought to disproportionately affect speech perception due to the rapid acoustic modulations contained in phonetic stimuli. In the majority of cases of word deafness, secondary to bilateral superior temporal lesions (Poeppel, 2001), additional deficits in spectral analysis might be expected, consistent with reports of word deafness being rarely “pure” and most cases displaying additional deficits in environmental sound and music perception (Griffiths et al., 2010; Phillips and Farmer, 1990), where spectral analysis may be more critical, especially in the case of music (de Cheveigne, 2005). Of interest for the current study, word deafness frequently evolves from or to WA (Saffran, 2000; Yaqub et al., 1988), and the conditions have been considered to form a spectrum of impairments (Auerbach et al., 1982). This implies that the comprehension elements (but not the production elements) of WA may partly involve similar fundamental auditory deficits.

In sum, existing neuropsychological and functional-imaging evidence implies that the condition of WA might be associated with a fundamental deficit in auditory processing. In this study, robust criterion-free measures were used to assess spectral, temporal and spectrotemporal elements of auditory processing in WA. Acoustic stimuli were designed to reflect auditory cues relevant to speech perception and to mirror theories of the functional organisation of the auditory cortices.

2. Methods

2.1. Participants

Ethical approval was granted by the North-West Multi-Centre Research Ethics Committee. Ten participants with Wernicke's aphasia (WA) and ten age- and hearing-matched controls were recruited. T-tests showed no significant difference in age or hearing thresholds between the WA and control groups (Table 2).

2.1.1. Wernicke's aphasia participants:

WA participants were recruited from speech and language therapy services in the north of England. For background information see Table 1.

Diagnosis and language assessments: WA participants were included based on behavioural profile as determined by the Boston Diagnostic Aphasia Examination – 3rd Edition (BDAE: Goodglass et al., 2001). Overall the group displayed a highly homogeneous language impairment (Figure 1): all had fluent speech but severely impaired single-word comprehension and repetition. Speech was punctuated with multiple phonological disturbances, in some cases severe and consistent phonological jargon; semantic paraphasias were rare. In all cases, reading comprehension was better than spoken. All WA participants except one (CB) were fully mobile with no hemiplegia. The combined percentile scores from the comprehension subtests of the BDAE were used as a global comprehension measure. A sensitive measure of single word comprehension was obtained from the 64-item spoken word to picture matching test from Bozeat et al.(2000). All WA participants were impaired on both comprehension measures. Phonological discrimination was assessed using the method described in Robson et al. (2012a) which provides a measure how perceptually distant CVC syllables must be for reliable discrimination. Eight participants were impaired on this measure; two participants (NM and CW) were within normal limits. Nonverbal executive reasoning, assessed using Raven's Coloured Progressive Matrices (Raven, 1962). Two

participants, DL and CB fell outside the group distribution on this measure (scoring at the 25th and 50th percentile respectively). Both these participants had lesions extending into pre-frontal regions and may indicate poor non-verbal reasoning or impaired executive functioning. Executive requirements of auditory assessments were kept low and consistent to prevent executive impairments affecting experimental outcomes.

Table 1 about here

Figure 1 about here

Neuroimaging: Areas of structural brain abnormality in the WA group are displayed in Figure 2. T1-weighted MR images were collected for 7 out of the 10 WA participants (DL, CB, RD, EL, NM, CH, CW). The remaining three participants could not be scanned because of safety issues or non-consent: CT scans were available for 2 of these participants (MR, AC). T1 images were acquired on a 3T Philips Achieva scanner with an eight-element SENSE head coil with a sense factor of 2.5. An inversion recovery sequence produced a 256 x 256 matrix of 128 transverse slices with 1mm³ voxels. Automated abnormality identification was carried out on the T1w images as described in Seghier et al. (2008). This algorithm enhances lesion identification by including an extra tissue class to the unified segmentation algorithm representing abnormality/lesion (Ashburner and Friston, 2005). Following segmentation, grey and white matter images were smoothed using an 8mm full-width at half maximum Gaussian kernel. Binary outlier images were then produced based on the degree of abnormality on a voxel-by-voxel basis by comparing WA participant images to 13 elderly healthy control participants; voxels with a degree of abnormality greater than 0.5 identified as

abnormal/lesion. The outlier images were overlaid to produce a lesion overlap map across all participants (Figure 2). Consistent with traditional accounts of WA, maximal lesion overlap was seen in the temporo-parietal junction extending into inferior parietal, middle temporal and anterior temporal regions. Inspection of MR and CT images indicated left-hemisphere Heschl's gyrus (HG) lesions in 7 out of the 9 participants, five of whom showed extension into medial HG, i.e., the anatomical correlate of primary auditory cortex (Hackett et al., 2001) to various extents (MR, RD, EL, AC, CH). The two WA participants who did not show any HG involvement (NM, CW) had lesions affecting non-primary auditory areas anterior and posterior to HG. Images of lesions in relation to primary auditory cortex are displayed in the supplementary materials (Figure S1).

Table 2 about here

Figure 2 about here

2.2. Auditory Assessments

2.2.1. Stimulus design

This study assessed auditory processing of purely spectral cues and well as of changes in spectrum over time, using parameters selected to reflect acoustic cues relevant to speech perception, the hierarchically organized activation patterns observed in the auditory cortices and theories of hemispheric temporal processing asymmetry. While speech contains multiple spectral and temporal cues, these do not typically occur in isolation but in combination; therefore, stimuli with spectral changes (modulations) over time may correspond better to

acoustic components of phonemes and phoneme transitions (Langers et al., 2003) than stimuli based on one type of cue.

Basic spectral processing was measured using pure-tone discrimination centred around the frequency value of 500Hz, chosen with respect to the relevant frequency range of speech. Frequency modulation (FM) detection was used to test the processing of basic changes in frequency over time. This was assessed at two different time windows by the use of two modulation rates: 2Hz and 40Hz, aiming to reflect the analysis of slow, prosodic variations (2Hz) and fast phonemic variations (40Hz) (Griffiths et al., 2001; Witton et al., 2002; Witton et al., 1998). The processing of more complex changes in spectrum over time were assessed using dynamic modulation (DM) detection based on spectro-temporal “moving ripple” stimuli with regular, sinusoidal modulations in the spectral and the temporal domain. This study used spectral modulation rates (or, densities) and temporal modulation rates (or, velocities) known to be common to speech and relevant to speech perception (Chi et al., 1999; Elliott and Theunissen, 2009) and to activate auditory cortices (Langers et al., 2003; Schonwiesner and Zatorre, 2009).

2.2.2. Auditory tasks

Graphic representations of example stimuli are provided in Figure 3, audio examples are included in the supplementary materials.

Frequency discrimination: This task required pure tones to be discriminated based on their frequency. The reference tones had a frequency of 500Hz +/-3 semitones, the target tone could be higher or lower; both the reference frequency and direction of difference were

pseudo-randomized across trials in a fixed order. The starting difference was 5 semitones for all participants.

Frequency modulation detection: The frequency modulation (FM) detection tasks required the discrimination of one sinusoidally frequency-modulated pure tone from two unmodulated tones, using a carrier frequency of 500Hz. FM rates of 2Hz and 40Hz were used, and an adaptively varied modulation index for the target. Starting value for the control participants (with the exception of TT and PD, see supplementary materials) was 3.5 for the 2Hz FM and 0.16 for the 40Hz. For the WA participants, initial piloting established that starting modulation indices of up to 20 at 2Hz and 4 at 40Hz were required.

Dynamic modulation detection: Dynamic modulation (DM) detection was tested for three different combinations of spectral (cycles per octave, cpo) and temporal (cycles per second, cps) rates in the WA and control groups (1cpo & -4cps, 2cpo & -8cps, 4cpo & -16cps) and for two additional parameter sets in the WA group (1cpo & -16cps, and 4cpo & -4cps). All stimuli had an upward drift in the spectral peaks, as indicated by the negative values for temporal rates (Chi et al., 1999), chosen to be more pleasant than a downward drift. The stimuli consisted of 400 components, logarithmically spaced across four octaves from 250 to 4000Hz. The starting modulation depth was 0.65 for the control participants, and between 0.65 and 1 for the WA participants. Dynamic modulations may result in perceived differences in loudness compared with unmodulated stimuli and therefore stimulus intensities were pseudorandomly varied to prevent this as an extraneous cue.

Figure 3 about here

2.2.3. Adaptive tracking procedure and threshold estimation

All tasks used a three-interval, two-alternative forced-choice adaptive design with an AXB paradigm, minimising executive demands and memory load (Bishop et al., 2005). The tasks were implemented in Matlab (version 7.2.0 Mathworks, 2006). The participants were instructed that they would hear three sounds and then be asked to decide whether the first (A) or the last (B) sound was the “odd one out”. The middle sound (X) was a reference stimulus against which the other two could be compared. Participants were asked to respond nonverbally by indicating their decision on a piece of paper showing three black rectangles in a row, reflecting the AXB trial structure. This avoided potential confounding difficulties arising from the significant speech distortions and perseverations in the WA participants. There were 50 trials per task; each trial comprised three stimuli (1 target, 2 reference) and two inter-stimulus-intervals (ISI) of 750 ms each, equalling a total trial duration of 3750ms. Executive task requirements were thus kept constant across tasks, in order to avoid possible effects on performance accuracy in the aphasic participants (Jefferies and Lambon Ralph, 2006; Noonan et al., 2010). For each task, the initial difference to detect was at a supra-threshold level, which was fixed for controls and selected individually for each WA participant during a training period prior to the start of the task. This approach ensured that each participant was able to perceive the difference reliably at the start. The adaptive procedure used a 2-down, 1-up algorithm: the difference between the target and reference stimuli was decreased after 2 consecutive correct responses and increased after 1 incorrect response. A larger step size was used up to the fourth reversal and a smaller one thereafter, with their magnitudes depending on the starting difference in order to give all participants the opportunity to reach the same threshold. Thresholds were calculated as the mean of the values at the final six reversals (change between decrease and increase), estimating the 70.0%-correct point of the psychometric function (Levitt, 1971). Sound intensity was set

individually to a comfortable level, reported in the supplementary materials (Figure S2). Average intensity levels were 86 dB SPL for the frequency discrimination, 86 dB SPL for FM and 81 dB SPL for DM detection.

3. Results

Auditory processing thresholds for the WA participants, control group and group differences (independent samples t-test) are presented in Table 3, individual adaptive tracks and individual impairment profiles for WA participants in the supplementary material (Figures S3-S9 and S10). For the three types of stimuli, the thresholds indicate respectively the difference in frequency in semitones, the FM modulation index and DM modulation depth required for the participants to reliably detect the difference between target and reference stimuli.

Table 3 about here

3.1. Threshold reliability

An advantage of the 2-down, 1-up adaptive-tracking method is that it allows qualitative assessment of whether participants understood task requirements. A normal “staircase” pattern of adaptive tracking is unlikely to be observed by chance (i.e., if the participant is guessing due to lack of understanding). The individual tracks of the WA and the control participants document consistent response patterns and support the assumption that the measured values were realistic estimations in almost all cases (supplementary materials: Figures S3-9). Convincing staircases were obtained for all WA participants for the frequency discrimination task, the 2Hz and 40Hz FM detection tasks, as well as for the DM tasks at

1cpo & -4cps, 1cpo & -16cps, and 4cpo & -4cps. Two out of the 10 WA participants (MR and RD) produced unreliable tracks at 2cpo & -8cps DM, and half of the group (DL, LS, MR, RD and CH) did so at 4cpo & -16cps, despite setting the starting level to maximum modulation depth ($A=1$). Therefore, although all WA participants were able to do the task, not all modulations could be perceived by the whole group and further analyses on the thresholds for 4 cpo & 16 cps are interpreted with caution. One control participant (GP) produced an unreliable result at 2Hz FM.

3.2. Auditory processing impairment

We hypothesised deficits in all of the auditory tasks in the WA participants, based on the fact that the parameters for these tasks were selected specifically with respect to the acoustic structure of speech (see above). Accordingly, one-tailed, independent sample t-tests were conducted for each auditory measure using an uncorrected alpha of $p < 0.05$, and Bonferroni correction for multiple comparisons ($n=6$), after testing for normal distribution of the data: all the control samples were, and only one sample of the WA group showed a minor deviation (2Hz FM, $p=0.0356$; Lilliefors-version of the Kolmogorov-Smirnoff Test for Composite Normality). In addition, thresholds were analysed at the individual level using Bayesian inferential methods to identify those amongst the WA participants that differed significantly from the controls, based on uncorrected, two-tailed significance level of $p \leq 0.05$ (Crawford and Garthwaite, 2007). For the frequency discrimination task, the WA and control participants did not significantly differ in their thresholds at the group level (Table 3; Figure 4). At the individual level, none of the WA participants had a significantly elevated threshold, although two of them were close to significance (DL, CB) (Table 3; supplementary materials, Figure S10). Group differences were observed for all other auditory tasks; the WA displayed

significantly elevated thresholds for the 2Hz and 40Hz FM tasks as well as the three DM tasks administered in both groups (1cpo & -4cps, 2cpo & -8cps and 4cpo & -16cps) (Table 3, Figure 4; independent samples t-tests). These are moderate-to-large effects (Cohen et al., 1980), and the group differences remain significant also after Bonferroni correction ($n=6$). Impairments at the individual level were found for six WA participants on 2Hz FM, five on 40Hz FM, all ten on DM 1cpo & -4cps, four on DM 2cpo & -8cps, and nine on DM 4cpo & -16cps (Figure 5). Inspection of individual data (Table 3; supplementary materials, Figure S10) showed that all WA participants had at least one other elevated thresholds in addition to DM 1cpo & -4cps.

For the DM 4cpo & -16cps, six of the WA participants were unable to reliably perceive the modulation even at maximum modulation depth ($A=1$). In order to investigate whether this was primarily due to the spectral or temporal complexity of the stimuli, two additional combinations of rates were assessed in the WA participants: low spectral & fast temporal (1cpo & -16cps), and high spectral & slow temporal (4cpo & -4cps). If temporal analysis was primarily impaired then modulation detection at 1cpo & -16cps should be more challenging than modulation detection at 4cpo & -4cps, whilst if spectral aspects were of particular difficulty then the opposite pattern should be observed. Neither of these patterns was observed: there was no significant difference between DM at 1cpo & -16cps and 4cpo & -4cps. All of the participants who had not been able to perceive the modulation at 4cpo and -16cps were able to perform the two additional DM tasks.

Figure 4 about here

3.3. Relationship with Peripheral Hearing Loss

Almost all participants, WA and controls, displayed some degree of age-related hearing loss. To examine whether impairments on the auditory tasks could be explained by peripheral hearing loss, an overall “hearing loss score” was computed using principal component analysis based on the pure-tone audiometry thresholds, obtained from either ear at 500Hz, 1kHz, 2kHz and 4kHz (Table 2). The control participants showed significant positive correlations between hearing score and 40Hz FM detection (Spearman’s $\rho = 0.87$, $p = 0.001$), DM detection at 1cpo & -4cps (Spearman’s $\rho = 0.73$, $p = 0.018$), DM at 4cpo & -16cps (Spearman’s $\rho = 0.87$, $p = 0.001$), and a borderline significant correlation with DM detection at 2cpo & -8cps (Spearman’s $\rho = 0.57$, $p = 0.083$). The WA participants however showed no such correlations, further supporting the hypothesis that their deficits are part of a neurological impairment.

3.4 Correlations with Comprehension

In order to examine the hypothesized relationship between auditory impairment in FM and DM detection and speech comprehension deficits in WA participants, correlations were assessed between the auditory detection thresholds and the three linguistic measures (BDAE global comprehension percentile, spoken word-picture match score and phonological discrimination threshold). For the BDAE comprehension percentile scores, a significant relationship was found for FM detection at 2Hz (Spearman’s $\rho = -0.64$, $p = 0.022$) but not for 40Hz. Amongst the DM detection measures, a highly significant correlation was found for 1cpo & -4cps (Spearman’s $\rho = -0.93$, $p < 0.001$) and 1cpo & -16cps (Spearman’s $\rho = -0.74$, p

= 0.007) (Table 4). The correlations with both DM detection tasks survived Bonferroni correction (for $n=6^1$). For the spoken-word to picture matching task, significant correlations were found for FM detection at 2Hz (Spearman's $\rho = -0.74$, $p = 0.007$) and DM detection at 1cpo & -4cps (Spearman's $\rho = -0.77$, $p = 0.0043$) and 1cpo & -16cps (Spearman's $\rho = -0.65$, $p = 0.020$) (Table 4); those for 2Hz FM and DM 1cpo -4cps survived Bonferroni correction. For the phonological discrimination thresholds, significant correlations were found for 40 Hz FM detection (Spearman's $\rho = 0.55$, $p = 0.05$), and for DM detection at 1cpo & -4cps (Spearman's $\rho = -0.74$, $p = 0.007$), 1cpo & -16cps (Spearman's $\rho = -0.64$, $p = 0.022$) and 2cpo & -8cps (Spearman's $\rho = -0.55$, $p = 0.048$); only the correlation with DM at 1cpo & -4cps survived Bonferroni correction (Table 4). The Spearman's ρ values of the significant correlations for FM and DM at the lower and intermediate modulation rates ranged from 0.55 to 0.93 for the BDAE, up to 0.77 for the spoken word to picture matching, and up to 0.74 for the phonological discrimination; these are considered to be large statistical effects (Cohen, 1988). The correlations were strongest for DM detection at 1cpo & -4cps (Figure 6): this combination of low rates yielded the highest Spearman's ρ values for all three linguistic measures; all three were highly significant and survived Bonferroni correction. With increasing spectral and temporal rates, correlation strength decreased, whereby the low spectral rate, i.e. the sparseness of spectral peaks appears most relevant. Nevertheless, the additional borderline significant correlations seen for instance between 2Hz FM with BDAE and sWPM, or for 40Hz FM with phonological discrimination, plus additional ones for other DM rate combinations should not be overlooked. Finally, no significant correlations were found between linguistic measures and frequency discrimination or peripheral hearing loss.

¹ Bonferroni correction for $n=6$ based on the two FM tasks and DM at low and intermediate spectral and temporal rates, 4cpo & -16cps was excluded due to the large number of participants outside normal limits.

3.5 Results Summary

The WA participants were significantly impaired compared to the controls in FM detection at both fast and slow rates tasks and the three DM tasks using low, intermediate and high temporal and spectral rates. The WA participants' thresholds for modulation detection correlated significantly with their speech-comprehension and phonological scores, with the strongest relationship found for DM detection at low rates.

Table 4 about here

Figure 5 about here

4. Discussion

Individuals with Wernicke's aphasia (WA) have severe and long-lasting auditory comprehension impairments. Traditional accounts emphasise a disruption to phonological analysis as the cause of the comprehension impairment. However, the close relationship between word deafness and WA as well as the congruency between typical lesion location and functional neuroimaging results implicate a more fundamental auditory processing disorder. By measuring sensitivity to basic acoustic stimuli comprising spectral, temporal and spectro-temporal features relevant to speech perception, this study found evidence that individuals with WA exhibited a core auditory processing disorder, the severity of which correlated significantly with the degree of their comprehension impairment.

Basic, purely spectral analysis, as measured by pure-tone frequency discrimination, was unimpaired in the WA participants. This result replicated previous findings that individuals with left-hemisphere lesions are able to perform this task (Biedermann et al., 2008; Bungert-Kahl et al., 2004). Additionally, the mismatch negativity component of EEG recordings

(indicating the processing of stimulus change) in response to pure-tone changes in frequency has been found normal in individuals with aphasia (Csepe et al., 2001). Whilst our participants with WA were unimpaired in the detection of simple changes in static spectral features, deficits were found in the ability to detect temporal modulations of the same in the form of FM. Further, a more severe impairment was observed for the detection of modulation occurring simultaneously along the spectral and temporal dimension (dynamic modulation in “moving ripple” stimuli). The successful performance on frequency discrimination indicated that the WA participants understood and were able to carry out the executive and memory requirements for all the auditory tasks used here, as those were kept as constant as possible throughout. It is thus unlikely that any executive component contributed significantly to the impairments observed and the correlations with the WA participants’ level of verbal comprehension. Another requirement that might be suspected to play role here is peripheral hearing sensitivity, i.e., the ability to perceive the presented stimuli. The results from the auditory tasks in the control group showed a significant relationship with pure tone audiometry hearing thresholds. No such relationship was observed in the WA group. This was taken as further evidence that the auditory processing deficits observed in the WA group were primarily neurological in nature; however, this does not exclude the possibility of an additional contribution from hearing loss which may, in individual cases, compound neurologically-based auditory analysis impairments in WA; for example, while CW performed well on auditory tasks overall, he additionally displays a considerable peripheral hearing loss which is likely to compound his comprehension impairment.

4.1. Co-occurrence and association of auditory deficits with comprehension and phonological-processing impairments

There was a significant impairment in DM detection in WA participants that was found to show a significant relationship with their BDAE comprehension scores, spoken-word to picture matching and their phonological discrimination thresholds, a skill that has been classically associated with comprehension impairment in WA (Luria, 1976; Luria and Hutton, 1977). The correlations with the linguistic measures were strongest for low modulation rates. Dynamic modulations are present in speech (Chi et al., 1999) and have been suggested to be of major importance to speech processing (Elliott and Theunissen, 2009; Langers et al., 2003). In fact, any speech (or non-speech) sound can be constructed from linear combinations of DM components using linear signal processing. The most relevant DM range for speech perception, based on the frequency of occurrence of spectral and temporal modulation rates in speech, lies between 0.25 and 4cpo, and 4 and 9cps, respectively (Chi et al., 1999; Schonwiesner and Zatorre, 2009). The strong correlations with the DM thresholds at 1cpo & -4cps are consistent with these modulation rates corresponding to the centre of the range found most frequently in speech (Chi et al., 1999; Schonwiesner and Zatorre, 2009). Therefore the strength of this correlation may indeed reflect the critical relevance of these parameters to speech perception.

Compared with DM thresholds, there was a less striking relationship found between 2Hz FM thresholds and both comprehension measures (BDAE and single-word to picture matching), but no relationship between 2Hz FM and phonological discrimination thresholds. The FM stimuli are less speech-like in their fine acoustic structure than DM as they are based on variation of only one dimension and consist of one pure tone. However, the correlation between 2Hz FM and word and sentence-level comprehension is consistent with proposals that this slow modulation rate corresponds to prosodic changes in speech. Impairments in 2Hz FM detection have additionally been found in developmental dyslexia and developmental language impairment (Witton et al., 2002; Witton et al., 1998). In this study,

there was a lack of correlation between 2Hz FM detection and phonological discrimination. This is consistent with phonological discrimination depending on the detection of single-phoneme differences, which are realised over more rapid time scales than that captured in 2Hz FM. In contrast, a borderline significant correlation was demonstrated between phonological discrimination and 40Hz FM detection. These FM detection findings are consistent with the idea that the processing of 2Hz FM and 40Hz FM corresponds to the processes needed for the analysis of slow prosodic and fast phoneme-related changes, respectively. However, the relative weakness of the 40 Hz FM correlations require further investigation, given that the left hemisphere is thought to play a particular role in analysing such fast modulations and that this rate of modulation is proposed to be related to phoneme-level information (Boemio et al., 2005; Drullman, 1995; Shannon et al., 1995).

Whilst this study indicates that the comprehension impairment in WA may be causally related to the capacity to resolve spectro-temporal acoustic cues, it is important to note that there are alternative explanations or common third factors that cannot be dismissed. The extent of damage might be suspected as a major factor in determining the severity of effect; however, in the current group, visual inspection of lesion maps did not reveal regular patterns between auditory cortex lesion extent and severity of auditory and linguistic impairment: see below. However, lesion mapping is clearly not trivial; and neither remote nor plasticity effects can be known. Furthermore, disruption to additional cognitive systems contributes to the overall comprehension deficit in WA. Multiple investigations have established a semantic level impairment in a large proportion of individuals with WA, as lesions extend into semantic processing regions in middle temporal and inferior parietal regions (Ogar et al., 2011; Robson et al., 2012b). Additionally, auditory comprehension, particularly sentence and discourse comprehension, is likely to be affected by auditory short term memory, the neural

substrate of which has been localised to left hemisphere superior temporal regions (Leff et al., 2009). However, the extent to which auditory short-term memory and phonological deficits in WA are separable from auditory processing proper, rather than an emergent property, remains to be established.

At the individual level, therefore, multiple factors must be accounted for to fully describe an individual's comprehension impairment, see below for a discussion of lesion profiles. However, individuals may also be non-separable on single measures but have differences in the effective connectivity between cognitive systems. Two WA participants in the current group (CH & CW) displayed considerably better comprehension than the other participants. While these participants did show better auditory thresholds than many other of the more impaired participants, the difference in acoustic processing scores did not appear to be as great as the difference in comprehension scores. This may indicate that these two participants had greater overall network efficiency or that the relationship between auditory processing impairment and auditory comprehension is not linear, due to high redundancy in the speech stream. Overall however, the current group of WA participants were recruited to be highly homogeneous in nature, reflecting "classical" WA and the correlations found in the current data set were likely a product of this high homogeneity in linguistic and auditory processing profiles but variation in severity over the case series. The contribution of additional cognitive systems and peripheral hearing is likely to be even more important with individuals who may display a Wernicke's-type aphasia but are less classical in nature e.g. those who additionally produce semantic jargon.

4.2 Spectral and temporal hemispheric asymmetries

Theories of laterality in auditory processing suggest that the right hemisphere responds preferentially to spectral cues and the left hemisphere to temporal cues (Zatorre and Belin, 2001). Theories of laterality in auditory processing suggest that the right hemisphere responds preferentially to spectral cues and the left hemisphere to temporal cues (Zatorre and Belin, 2001). Laterality theories have been further elaborated into theories of asymmetric temporal sampling, which suggest that the right hemisphere processes modulations, including spectral changes, which occur over time windows of up to several hundred milliseconds, while the left hemisphere responds preferentially to rapid modulations over short temporal windows of up to 50ms (Boemio et al., 2005). Neuropsychological reports have been broadly consistent with a hemispheric lateralization of function, in that individuals with right hemisphere lesions show a disproportionate impairment on spectral tasks and individuals with left hemisphere lesions show a disproportionate impairment on temporal tasks (Divenyi and Robinson, 1989; Griffiths et al., 1997; Robin et al., 1990; Samson and Zatorre, 1988; Samson et al., 2002). In the current study, the auditory tasks systematically tested both temporal and spectral parameters. All the WA participants had unilateral left hemisphere lesions in the region of the auditory cortex. According to the laterality and asymmetric temporal sampling hypotheses, it would be predicted that these participants would display deficits predominantly in tasks that require the perception of changes over time (i.e. FM and DM detection but not PT discrimination) and that this impairment should be particularly prominent in tasks requiring the analysis of rapid temporal modulations (e.g. 40Hz FM and 8 – 16cps DM). Consistent with the postulated hemispheric asymmetry, the WA participants were unimpaired at basic analysis of changes in a static spectral cue (frequency discrimination for pure tones) but impaired at detecting temporal modulations of frequency changing over time (FM detection) and of spectral peaks moving in time (DM detection), and in some cases unable to detect fast modulations at all (DM detection at 4cpo & -16cps).

However, inconsistent with predictions of the window-length model (Boemio et al., 2005), the WA participants were impaired at detecting not only fast modulations (40Hz FM), but also slower modulations (2Hz FM). Neither did the systematic manipulation of spectral and temporal parameters in the DM tasks reveal a disproportionate impairment with increasing temporal rate over increasing spectral density; both spectral and temporal complexity affected the capacity to detect DM. These results are consistent with a functional imaging study in which the activation patterns elicited by dynamic ripple presentation did not support a clear hemispheric specialization but only a regional one for high spectral density in the right lateral HG (Schonwiesner and Zatorre, 2009) and a general decrease in preferred temporal rate from primary to secondary auditory cortex. The available data from the current study support the hypothesis that the right hemisphere is able to support the processing of spectral information over structurally simple stimuli, however suggest increasing spectro-temporal complexity requiring a greater bilateral contribution.

4.3 Neuroanatomical correlates and neuropsychological context

While this study was not designed to be a neuroanatomical investigation, and limited participant availability prevents such an approach; individual lesion profiles were visually examined to establish whether there was any relationship between the degree of auditory processing impairment and auditory cortex lesion. No systematic patterns could be detected over the whole group. However, the participants with the most severe auditory impairment, for whom scanning data were available, (DL & CB) displayed greater involvement of anterior as well as posterior cortical fields, and the three participants with the least severe auditory impairment (EL, NM & CW: see mean percentile score of supplementary figure S10) had no lesion involvement of the left transverse temporal gyri. These two observations are

confounded, however, by the two most severe participants also having the largest lesions and the most severe participant (DL) also sparing almost the entire left transverse temporal gyri. At the group level, the lesion distribution was relatively consistent, in that all seven participants (for whom MRI scans were available) displayed lesion in the white matter underlying the left mid-to-posterior superior temporal gyrus and auditory cortices and a further six participants had involvement of the left grey matter of the primary auditory cortex and mid-to-anterior superior temporal gyrus. Inspection of 2/3 remaining participants' CT scans showed involvement of left Heschl's gyrus for two further participants. The extent to which such unilateral lesions are capable of causing disruption of auditory processing for speech perception has been questioned. For example, left hemisphere intracarotid sodium amobarbital injection has not been shown to significantly disrupt phonological discrimination (Boatman et al., 1998) or lead to disproportionately greater phonological errors in spoken word to picture matching (Hickok et al., 2008). In addition, word deafness, a perceptually based comprehension impairment, results from *bilateral* lesions to the superior temporal cortex in the majority of cases. Indeed, it has been hypothesised that only bilateral cases of word deafness arise from an apperceptive, pre-phonemic processing impairment, and unilateral word deafness cases arise from an associative deficit in recognising perceptual input (Auerbach et al., 1982). Behavioural evidence showing pre-phonemic auditory deficits in unilateral word deafness (Slevc et al., 2011; Stefanatos et al., 2005; Wang et al., 2000) may appear inconsistent with this hypothesis. However, unilateral word deafness cases are often reported to include sub-cortical, white matter regions underlying the superior temporal gyrus, implicating both hemispheres through deafferenting the left posterior auditory association cortices from both the left and right primary auditory cortices (Poeppel, 2001; Praamstra et al., 1991; Takahashi et al., 1992) or impoverishing the capacity for integrative processing between the right and left auditory cortices. Thus, the lesion distribution in the current group

of WA participants is consistent with reports from case of unilateral word deafness, in that the greatest lesion overlap was observed in the white matter underlying the left mid-posterior superior temporal lobe. In addition, behavioural results from the current study accord with those from studies of word deafness which have identified impairments in non-verbal auditory temporal analysis: e.g. raised click fusion and gap detection thresholds reduced capacity to discriminate stimuli containing rapid modulations (Albert and Bear, 1974; Otsuki et al., 1998; Slevc et al., 2011; Stefanatos et al., 2005; Wang et al., 2000). In fact, temporal processing impairment has been considered to be causally related to the speech perception deficit in word deafness, although no statistical relationship has been observed due to the rarity of the condition preventing cases-series investigations. Overall, these behavioural profiles and lesion patterns in the current study are consistent with the hypothesis that word deafness and WA are part of a spectrum of impairments (Auerbach et al., 1982). This is further supported by reports that unilateral word deafness cases frequently resolve from or to WA (Yaquib et al., 1988). However, the extent to which WA and unilateral word deafness truly implicate both auditory cortices through structural and functional disconnection cannot be established with the current data. Future structural and functional neuroimaging evidence may be able to answer this clinically and theoretically important question; see Slevc et al. (2011) for an initial DTI exploration in a case of word deafness. Although word deafness and WA appear to overlap in their combined auditory comprehension and auditory processing impairment, there are a number of aspects in which they differ. Word deafness is a relatively specific disorder, both behaviourally and cognitively. WA is more heterogeneous, in that the comprehension impairment has additional contributions from phonological and semantic level impairments (Ogar et al., 2011; Robson et al., 2012b). Additionally, individuals with WA suffer severely distorted language production, which is not the case in word deafness. There has been renewed interest in the contribution of the speech production system to

speech perception (Lieberman and Mattingly, 1985). In a recent review of the literature, Devlin and Aydelott (2009) conclude that the motor components of the speech production system have an influence on speech perception in conditions of degraded auditory input. This is an interesting possibility given that both individuals with word deafness and WA suffer from pathologically degraded speech perception systems, but only individuals with WA suffer from additional speech production difficulties. If motor elements were to contribute to speech perception, it could be hypothesised that individuals with word deafness would be better able to use their residual speech perception resources by employing top-down, constraining influences from the intact speech production network. In contrast, individuals with WA would lack this additional resource leading to more significant behavioural consequences for a similar degree of auditory processing impairment.

4.6 Conclusions

This work demonstrates a significant impairment in the analysis of fundamental acoustic cues in individuals with WA. An impairment was found in the spectrotemporal analysis of dynamic cues relevant to speech but not for the analysis of basic differences in frequency. Furthermore, the significant correlation found between the auditory processing and auditory comprehension impairments may indicate a causal contribution to the overall language profile, alongside traditionally implicated cognitive impairments such as semantic processing.

References

Albert ML and Bear D. Time to understand - case study of word deafness with reference to role of time in auditory comprehension. *Brain*, 97 (JUN):373-384, 1974.

Ashburner J and Friston KJ. Unified segmentation. *NeuroImage*, 26 (3):839-851, 2005.

Auerbach SH, Allard T, Naeser M, Alexander MP and Albert ML. Pure word deafness - Analysis of a case with bilateral lesions and a defect at the pre-phonemic level. *Brain*, 105 (JUN):271-300, 1982.

Baker E, Blumstein SE and Goodglass H. Interaction between phonological and semantic factors in auditory comprehension. *Neuropsychologia*, 19 (1):1-15, 1981.

Benson RR, Whalen DH, Richardson M, Swainson B, Clark VP, Lai S and Liberman AM. Parametrically dissociating speech and nonspeech perception in the brain using fMRI. *Brain and Language*, 78 (3):364-396, 2001.

Biedermann F, Bungert P, Dorrscheidt GJ, von Cramon DY and Rubsamen R. Central auditory impairment in unilateral diencephalic and telencephalic lesions. *Audiology and Neuro-Otology*, 13 (2):123-144, 2008.

Binder JR, Frost JA, Hammeke TA, Bellgowan PSF, Springer JA, Kaufman JN and Possing ET. Human temporal lobe activation by speech and nonspeech sounds. *Cerebral Cortex*, 10 (5):512-528, 2000.

Bishop DVM, Adams CV, Nation K and Rosen S. Perception of transient nonspeech stimuli is normal in specific language impairment: Evidence from glide discrimination. *Applied Psycholinguistics*, 26 (2):175-194, 2005.

Blumstein SE, Baker E and Goodglass H. Phonological factors in auditory comprehension in aphasia. *Neuropsychologia*, 15 (1):19-30, 1977.

Boatman D, Hart J, Lesser RP, Honeycutt N, Anderson NB, Miglioretti D and Gordon B. Right hemisphere speech perception revealed by amobarbital injection and electrical interference. *Neurology*, 51 (2):458-464, 1998.

Boemio A, Fromm S, Braun A and Poeppel D. Hierarchical and asymmetric temporal sensitivity in human auditory cortices. *Nature Neuroscience*, 8 (3):389-395, 2005.

Bogen JE and Bogen GM. Wernicke's region - Where is it? *Annals of the New York Academy of Sciences*, 280 (OCT28):834-843, 1976.

Bozeat S, Lambon Ralph MA, Patterson K, Garrard P and Hodges JR. Non-verbal semantic impairment in semantic dementia. *Neuropsychologia*, 38 (9):1207-1215, 2000.

Bungert-Kahl P, Biedermann F, Dörrscheidt GJ, von Cramon DY and Rübsem R. Psychoacoustic test tools for the detection of deficits in central auditory processing: Normative data. *Zeitschrift für Audiologie*, 43 (48-71), 2004.

Chevillet M, Riesenhuber M and Rauschecker JP. Functional Correlates of the Anterolateral Processing Hierarchy in Human Auditory Cortex. *Journal of Neuroscience*, 31 (25):9345-9352, 2011.

Chi TS, Gao YJ, Guyton MC, Ru PW and Shamma S. Spectro-temporal modulation transfer functions and speech intelligibility. *Journal of the Acoustical Society of America*, 106 (5):2719-2732, 1999.

Cohen J. *Statistical power analysis for behavioural sciences.*, 2nd ed. Hillsdale, NJ: Erlbaum, 1988.

Cohen R, Kelter S and Woll G. Analytical competence and language impairment in aphasia. *Brain and Language*, 10 (2):331-351, 1980.

Crawford JR and Garthwaite PH. Comparison of a single case to a control or normative sample in neuropsychology: Development of a Bayesian approach. *Cognitive Neuropsychology*, 24 (4):343-372, 2007.

Csepe V, Osman-Sagi J, Molnar M and Gosy M. Impaired speech perception in aphasic patients: event-related potential and neuropsychological assessment. *Neuropsychologia*, 39 (11):1194-1208, 2001.

de Cheveigne A. Pitch perception models. In: Plack CJ, Oxenham AJ, Fay RR, Popper AN (Eds), *Springer Handbook of Auditory Research*: 2005: 169-233.

De Renzi E, Faglioni P, Scotti G and Spinnler H. Impairment in associating colour to form, concomitant with aphasia. *Brain*, 95 (2):293-304, 1972.

Devlin JT and Aydelott J. Speech Perception: Motoric Contributions versus the Motor Theory. *Current Biology*, 19 (5):R198-R200, 2009.

Divenyi PL and Robinson AJ. Nonlinguistic auditory capabilities in aphasia. *Brain and Language*, 37 (2):290-326, 1989.

Drullman R. Temporal envelope and fine-structure cues for speech-intelligibility. *Journal of the Acoustical Society of America*, 97 (1):585-592, 1995.

Elliott TM and Theunissen FE. The Modulation Transfer Function for Speech Intelligibility. *Plos Computational Biology*, 5 (3), 2009.

Fink M, Churan J and Wittmann M. Temporal processing and context dependency of phoneme discrimination in patients with aphasia. *Brain and Language*, 98 (1):1-11, 2006.

Goodglass H, Kaplan E and Barresi B. Boston Diagnostic Aphasia Examination, 3rd Ed, (BDAE). Baltimore: Lippincott Williams & Wilkins, 2001.

Griffiths TD, Bamiou DE and Warren J. Disorders of the auditory brain. In: Palmer AR, Rees A (Eds), *Oxford Handbook of Auditory Science. Vol 2, The Auditory Brain*. Oxford, UK: Oxford University Press, 2010.

Griffiths TD, Dean JL, Woods W, Rees A and Green GGR. The Newcastle Auditory Battery (NAB) - A temporal and spatial test battery for use on adult naive subjects. *Hearing Research*, 154 (1-2):165-169, 2001.

Griffiths TD, Rees A, Witton C, Cross PM, Shakir RA and Green GGR. Spatial and temporal auditory processing deficits following right hemisphere infarction - A psychophysical study. *Brain*, 120 (MAY):785-794, 1997.

Hackett TA, Preuss TM and Kaas JH. Architectonic identification of the core region in auditory cortex of macaques, chimpanzees, and humans. *Journal of Comparative Neurology*, 441 (3):197-222, 2001.

Hall DA, Haggard MP, Akeroyd MA, Summerfield AQ, Palmer AR, Elliott MR and Bowtell RW. Modulation and task effects in auditory processing measured using fMRI. *Human Brain Mapping*, 10 (3):107-119, 2000.

Hickok G, Okada K, Barr W, Pa J, Rogalsky C, Donnelly K, Barde L and Grant A. Bilateral capacity for speech sound processing in auditory comprehension: Evidence from Wada procedures. *Brain and Language*, 107 (3):179-184, 2008.

Howard D and Patterson K. *Pyramids and Palm Trees: A Test of Semantic Access from Pictures and Words*. Bury Saint Edmunds: Thames Valley Test Company, 1992.

Husain FT, Tagamets MA, Fromm SJ, Braun AR and Horwitz B. Relating neuronal dynamics for auditory object processing to neuroimaging activity: a computational modeling and an fMRI study. *NeuroImage*, 21 (4):1701-1720, 2004.

Jefferies E and Lambon Ralph MA. Semantic impairment in stroke aphasia versus semantic dementia: A case-series comparison. *Brain*, 129 (8):2132 - 2147, 2006.

Kirshner HS, Webb WG and Duncan GW. Word deafness in Wernicke's aphasia. *Journal of Neurology Neurosurgery and Psychiatry*, 44 (3):197-201, 1981.

Langers DRM, Backes WH and van Dijk P. Spectrotemporal features of the auditory cortex: the activation in response to dynamic ripples. *NeuroImage*, 20 (1):265-275, 2003.

Leff AP, Schofield TM, Crinion JT, Seghier ML, Grogan A, Green DW and Price CJ. The left superior temporal gyrus is a shared substrate for auditory short-term memory and speech comprehension: evidence from 210 patients with stroke. *Brain*, 132 (DEC):3401-3410, 2009.

Levitt H. Transformed up-down methods in psychoacoustics. *J Acoust Soc Am*, 49 (2):467-477, 1971.

Lieberman AM and Mattingly IG. The motor theory of speech-perception revised. *Cognition*, 21 (1):1-36, 1985.

Luria AR. *Disturbances of Understanding of Verbal Communication in Patients with Sensory Aphasia*. The Hague: Mouton & Co. B. V, 1976.

Luria AR and Hutton JT. A modern assessment of the basic forms of aphasia. *Brain and Language*, 4 (2):129-151, 1977.

Mathworks. MATLAB version 7.2.0. Natick, MA: Mathworks, Inc., 2006.

Menon V, Levitin DJ, Smith BK, Lembke A, Krasnow BD, Glazer D, Glover GH and McAdams S. Neural correlates of timbre change in harmonic sounds. *NeuroImage*, 17 (4):1742-1754, 2002.

Noonan KA, Jefferies E, Corbett F and Lambon Ralph MA. Elucidating the nature of deregulated semantic cognition in semantic aphasia: Evidence for the roles of prefrontal and temporoparietal cortices. *Journal of Cognitive Neuroscience*, 22 (7):1597-1613, 2010.

Ogar JM, Baldo JV, Wilson SM, Brambati SM, Miller BL, Dronkers NF and Gorno-Tempini ML. Semantic dementia and persisting Wernicke's aphasia: Linguistic and anatomical profiles. *Brain and Language*, 117 (1):28-33, 2011.

Otsuki M, Soma Y, Sato M, Homma A and Tsuji S. Slowly progressive pure word deafness. *European Neurology*, 39 (3):135-140, 1998.

Petkov CI, Kayser C, Augath M and Logothetis NK. Functional imaging reveals numerous fields in the monkey auditory cortex. *Plos Biology*, 4 (7):1213-1226, 2006.

Phillips DP and Farmer ME. Acquired word deafness, and the temporal grain of sound representation in the primary auditory-cortex. *Behavioural Brain Research*, 40 (2):85-94, 1990.

Pinard M, Chertkow H, Black S and Peretz I. A case study of pure word deafness: Modularity in auditory processing? *Neurocase*, 8 (1-2):40-55, 2002.

Poeppel D. Pure word deafness and the bilateral processing of the speech code. *Cognitive Science*, 25 (5):679-693, 2001.

Polster MR and Rose SB. Disorders of auditory processing: evidence for modularity in audition. *Cortex; a journal devoted to the study of the nervous system and behavior*, 34 (1):47-65, 1998.

Praamstra P, Hagoort P, Maassen B and Crul T. Word deafness and auditory cortical function - A case-history and hypothesis. *Brain*, 114 (JUN):1197-1225, 1991.

Price C, Thierry G and Griffiths T. Speech-specific auditory processing: where is it? *Trends in Cognitive Sciences*, 9 (6):271-276, 2005.

Price CJ. The anatomy of language: a review of 100 fMRI studies published in 2009. In: Kingstone A, Miller MB (Eds), *Year in Cognitive Neuroscience 2010*. Oxford: Blackwell Publishing, 2010: 62-88.

Rauschecker JP and Tian B. Processing of band-passed noise in the lateral auditory belt cortex of the rhesus monkey. *Journal of Neurophysiology*, 91 (6):2578-2589, 2004.

Raven JC. *Coloured Progressive Matrices Sets A, AB, B*. London: H. K. Lewis, 1962.

Robin DA, Tranel D and Damasio H. Auditory-perception of temporal and spectral events in patients with focal left and right cerebral lesions. *Brain and Language*, 39 (4):539-555, 1990.

Robson H, Keidel JL, Lambon Ralph MA and Sage K. Revealing and quantifying the impaired phonological analysis underpinning impaired comprehension in Wernicke's aphasia. *Neuropsychologia*, 50 (2):276-288, 2012a.

Robson H, Sage K and Lambon Ralph MA. Wernicke's aphasia reflects a combination of acoustic-phonological and semantic control deficits: A case-series comparison of Wernicke's aphasia, semantic dementia and semantic aphasia. *Neuropsychologia*, 50 (2):266-275, 2012b.

Saffran EM. The organization of semantic memory: In support of a distributed model. *Brain and Language*, 71 (1):204-212, 2000.

Samson S and Zatorre RJ. Melodic and harmonic discrimination following unilateral cerebral excision. *Brain and Cognition*, 7 (3):348-360, 1988.

Samson S, Zatorre RJ and Ramsay JO. Deficits of musical timbre perception after unilateral temporal-lobe lesion revealed with multidimensional scaling. *Brain*, 125 (MAR):511-523, 2002.

Schonwiesner M, Rubsamen R and von Cramon DY. Hemispheric asymmetry for spectral and temporal processing in the human antero-lateral auditory belt cortex. *European Journal of Neuroscience*, 22 (6):1521-1528, 2005a.

Schonwiesner M, Rubsamen R and von Cramon DY. Spectral and temporal processing in the human auditory cortex - Revisited. *Conference of the Neurosciences and Music II: from Perception to Performance*, 2005:89-92.

Schonwiesner M and Zatorre RJ. Spectro-temporal modulation transfer function of single voxels in the human auditory cortex measured with high-resolution fMRI. *Proceedings of the National Academy of Sciences of the United States of America*, 106 (34):14611-14616, 2009.

Scott SK, Rosen S, Lang H and Wise RJS. Neural correlates of intelligibility in speech investigated with noise vocoded speech- A positron emission tomography study. *Journal of the Acoustical Society of America*, 120 (2):1075-1083, 2006.

Seghier ML, Ramackhansingh A, Crinion J, Leff AP and Price CJ. Lesion identification using unified segmentation-normalisation models and fuzzy clustering. *NeuroImage*, 41 (4):1253-1266, 2008.

Shannon RV, Zeng FG, Kamath V, Wygonski J and Ekelid M. Speech recognition with primarily temporal cues. *Science*, 270 (5234):303-304, 1995.

Slevc LR, Martin RC, Hamilton AC and Joanisse MF. Speech perception, rapid temporal processing, and the left hemisphere: A case study of unilateral pure word deafness. *Neuropsychologia*, 49 (2):216-230, 2011.

Stefanatos GA, Gershkoff A and Madigan S. On pure word deafness, temporal processing, and the left hemisphere. *Journal of the International Neuropsychological Society*, 11 (4):456-470, 2005.

Takahashi N, Kawamura M, Shinotou H, Hirayama K, Kaga K and Shindo M. Pure word deafness due to left-hemisphere damage. *Cortex; a journal devoted to the study of the nervous system and behavior*, 28 (2):295-303, 1992.

Tian B and Rauschecker JP. Processing of frequency-modulated sounds in the lateral auditory belt cortex of the rhesus monkey. *J. Neurophysiol.*, 92 (5):2993-3013, 2004.

von Steinbüchel N, Wittmann M, Strasburger H and Szélag E. Auditory temporal-order judgement is impaired in patients with cortical lesions in posterior regions of the left hemisphere. *Neuroscience Letters*, 264 (1-3):168-171, 1999.

Wang E, Peach RK, Xu Y, Schneck M and Manry C. Perception of dynamic acoustic patterns by an individual with unilateral verbal auditory agnosia. *Brain and Language*, 73 (3):442-455, 2000.

Witton C, Stein JF, Stoodley CJ, Rosner BS and Talcott JB. Separate influences of acoustic AM and FM sensitivity on the phonological decoding skills of impaired and normal readers. *Journal of Cognitive Neuroscience*, 14 (6):866-874, 2002.

Witton C, Talcott JB, Hansen PC, Richardson AJ, Griffiths TD, Rees A, Stein JF and Green GGR. Sensitivity to dynamic auditory and visual stimuli predicts nonword reading ability in both dyslexic and normal readers. *Current Biology*, 8 (14):791-797, 1998.

Yaqub BA, Gascon GG, Alnoasha M and Whitaker H. Pure word deafness (acquired verbal auditory agnosia) in an arabic speaking patient. *Brain*, 111 (APR):457-466, 1988.

Zatorre RJ and Belin P. Spectral and temporal processing in human auditory cortex. *Cerebral Cortex*, 11 (10):946-953, 2001.

List of tables

Table 1: Biographical information and background data for WA participants.

BDAE = Boston Diagnostic Aphasia Examination – 3rd Edition (Goodglass et al., 2001), sWPM = spoken-word to picture matching, sentence = sentence and paragraph level comprehension, CSB = Cambridge semantic battery (Bozeat et al. 2000), RCPM = Ravens Coloured Progressive Matrices (Raven, 1962). Phon. Discrimination = Phonological discrimination threshold (Robson et al., 2012a).

Table 2: Age and hearing thresholds for WA participants and controls.

Overall hearing score derived using a principal component analysis: A single component was extracted accounting for 62% of the variance and used as the overall hearing score. Note that no significant difference were found between groups (see bottom row for results based on t-test for independent samples, two-tailed with a significance level of $p \leq 0.05$).

Table 3. Auditory threshold results and group difference significance values for WA compared with control participants.

Freq = frequency discrimination; ns = non-significant at the level of $p \leq 0.05$; p values marked in **bold** = surviving Bonferroni correction; individual threshold in **bold** = significantly elevated based on (Crawford and Garthwaite, 2007); * = borderline outside normal limits $p = 0.06$ two-tailed; individual thresholds marked in *italics* = unreliable threshold value.

Table 4: Correlations between auditory FM and DM thresholds and linguistic measures in WA participants.

Listed are Spearman's ρ correlation coefficients and p values from one-tailed tests. *In italics* are those that are significant at the level of $p \leq 0.05$ (including borderline $p = 0.051$), and in **bold** those that survive Bonferroni correction ($n = 7$). BDAE = Boston Diagnostic Aphasia Examination (Goodglass et al., 2001) auditory comprehension percentile. sWPM = spoken word to picture match (Bozeat et al., 2000). Phonological discrimination = phonological discrimination threshold (Robson et al., 2012).

Figures

Figure 1: Boston Diagnostic Aphasia Examination (Goodglass et al., 2001) profiles for WA participants.

The grey shading represents areas within which participants must fall to be classified with classical WA. Note that WA participants showed a high degree of homogeneity in their language comprehension and expression.

Figure 2: Lesion overlap map for WA participants.

The lesion overlap map for 7 WA participants was produced using the method described in Seghier et al. (2008). Axial slices are presented with corresponding Talairach coordinates above. Colour bar indicates the number of participants with abnormality at any voxel (max 7). Summary of areas of highest abnormality overlap are presented beneath.

Figure 3: Examples of acoustic stimuli.

A: Pure tone waveforms used in frequency discrimination task. Maximum difference between the target and reference is presented (5 semitones). Target = 471.9Hz, reference = 353.6Hz.

B: Spectrograms of frequency modulated tones. Reference tone = unmodulated 500Hz carrier frequency. i: 2Hz FM at a modulation index of $A = 9$. ii: 40Hz FM at a modulation index of $A = 1$. C: Spectrograms of dynamic modulation. Reference = unmodulated noise. i: Sparse and slow modulation – 1cpo & -4cps at maximum modulation depth $A = 1$. ii: Dense and fast modulation – 4cpo & -16cps at maximum modulation depth $A = 1$.

Figure 4: Auditory task thresholds for WA and control participants: group data.

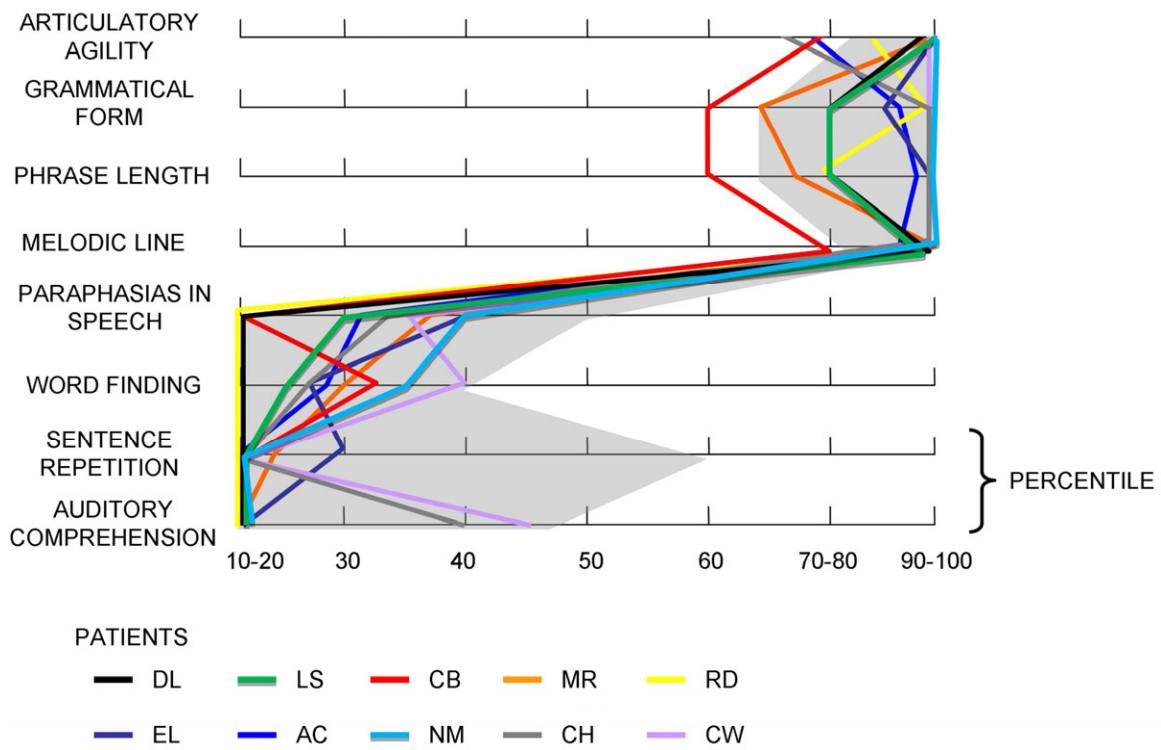
Boxplots display interquartile ranges (boxes) and max. to min. range excluding outliers (whiskers) for each of the tasks. There was no group difference found for the frequency discrimination task (A) but for both 2 and 40Hz FM (B) and all three DM (C) detection tasks undertaken in both groups, i.e. for low rates (sparse and slow: 1cpo & -4cps), intermediate (2cpo & -8cps), and high rates combination (dense and fast: 4cpo & -16cps).

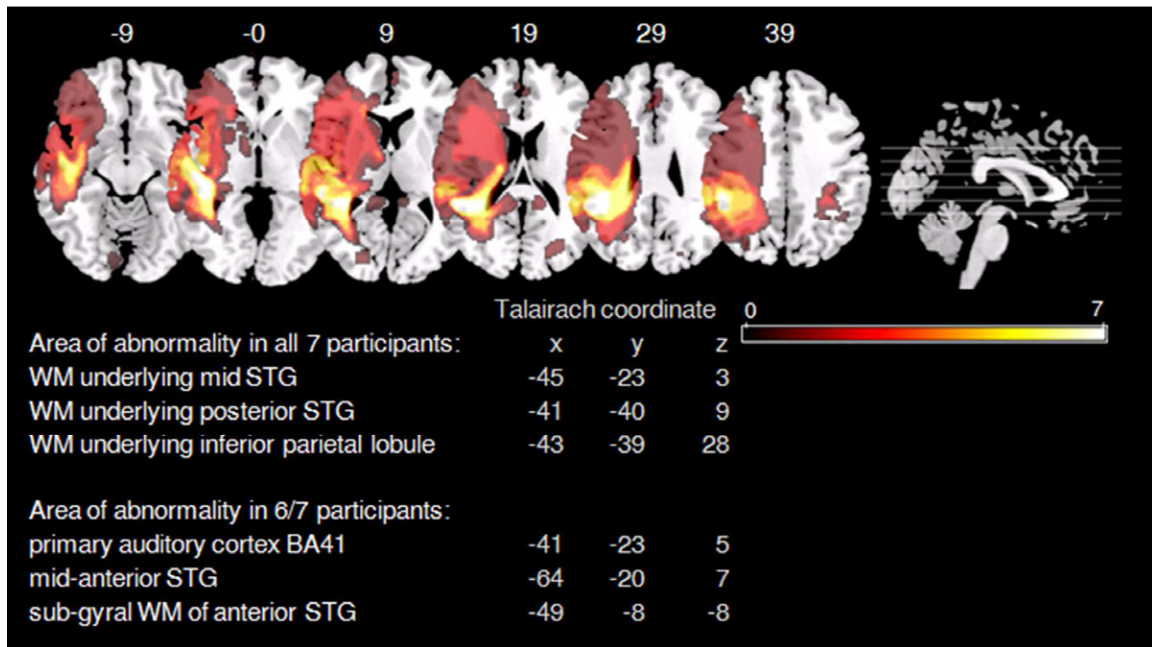
Figure 5: Percentage WA participants impaired for the auditory tasks.

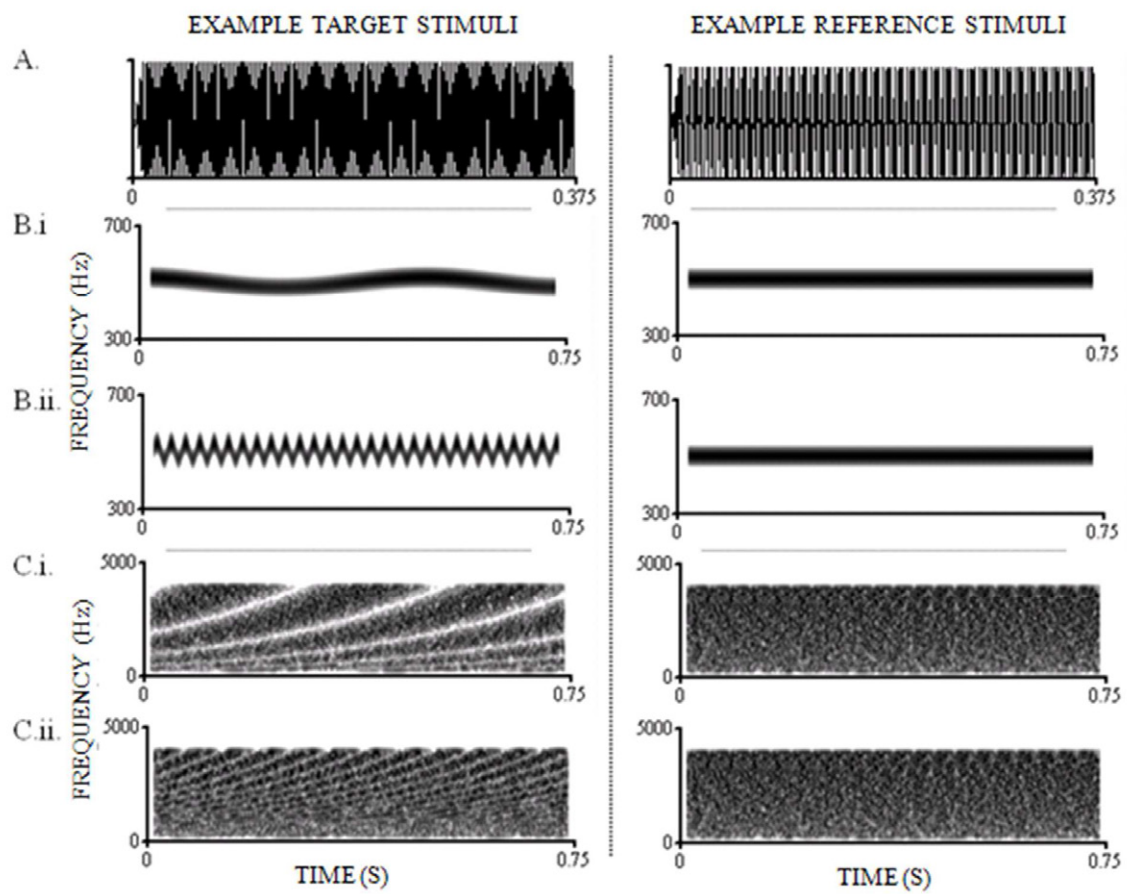
Displayed is the percentage of individuals significantly impaired in comparison to the controls, based on Bayesian inference methods, using an uncorrected, two-tailed significance level of $p \leq 0.05$ (Crawford and Garthwaite, 2007).

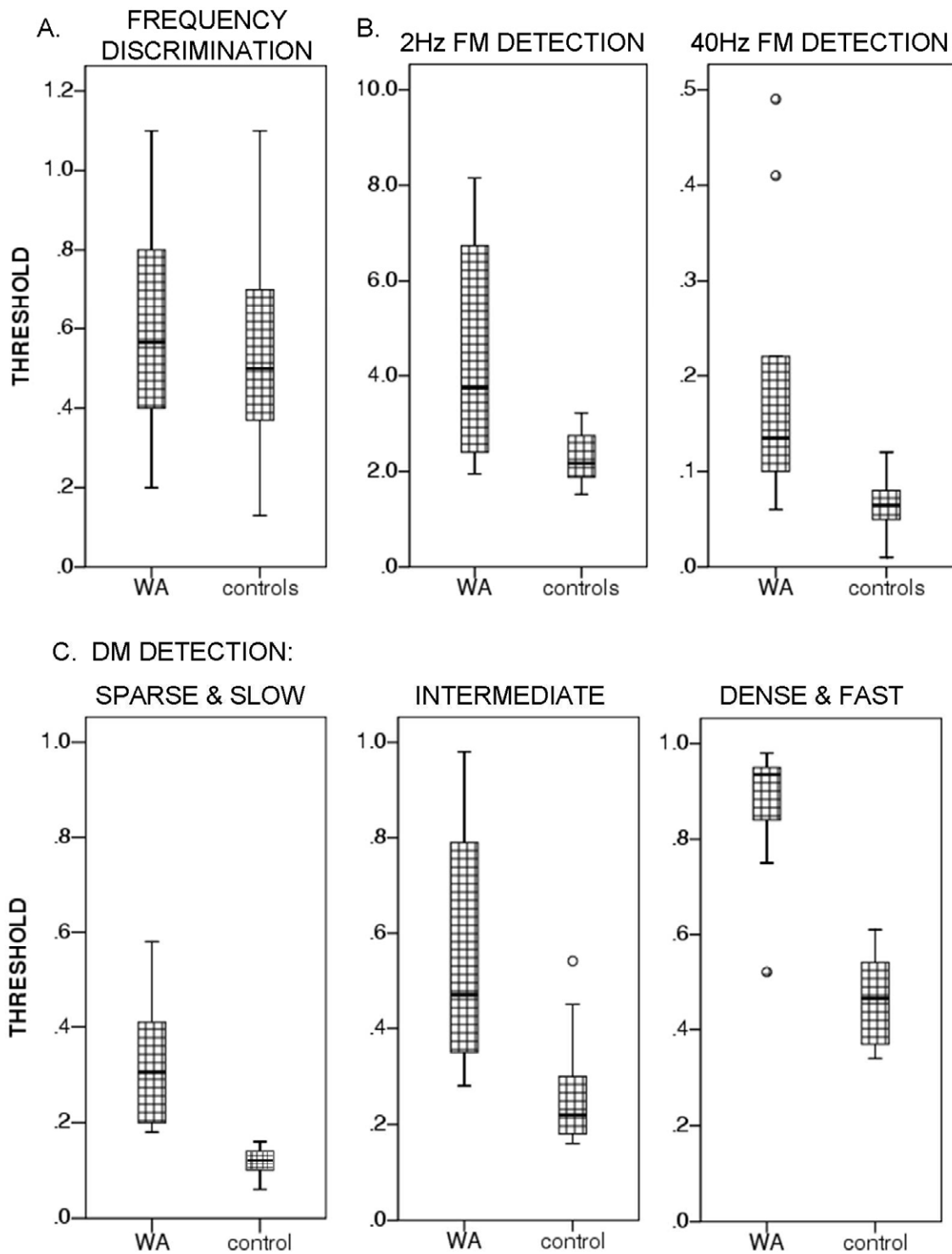
Figure 6: Scatter plots for significant correlations between the three linguistic measures and DM detection thresholds in WA participants.

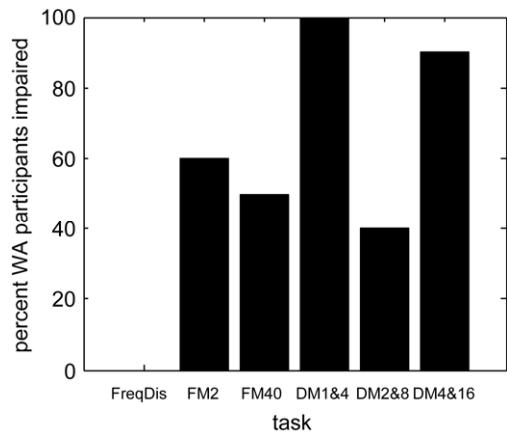
Correlations are depicted for DM detection thresholds for the low rate combination (1cpo & -4 cps) as those yielded the strongest correlations with all three linguistic measures: BDAE comprehension percentiles (Spearman's $\rho = -0.93$, $p < 0.001$) (A), spoken-word to picture matching scores (Spearman's $\rho = -0.4$, $p = 0.001$) (B), and phonological discrimination thresholds (C).











ACCEPTED MANUSCRIPT

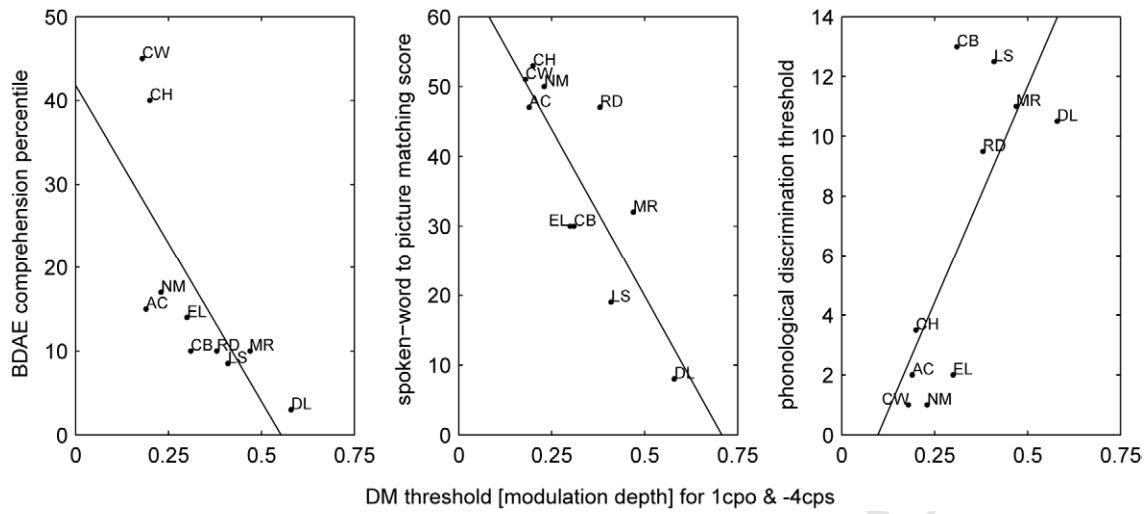


Figure 1: Boston Diagnostic Aphasia Examination (Goodglass et al., 2001) profiles for WA participants.

The grey shading represents areas within which participants must fall to be classified with classical WA. Note that WA participants showed a high degree of homogeneity in their language comprehension and expression.

Figure 2: Lesion overlap map for WA participants.

The lesion overlap map for 7 WA participants was produced using the method described in Seghier et al. (2008). Axial slices are presented with corresponding Talairach coordinates above. Colour bar indicates the number of participants with abnormality at any voxel (max 7). Summary of areas of highest abnormality overlap are presented beneath.

Figure 3: Examples of acoustic stimuli.

A: Pure tone waveforms used in frequency discrimination task. Maximum difference between the target and reference is presented (5 semitones). Target = 471.9Hz, reference = 353.6Hz. B: Spectrograms of frequency modulated tones. Reference tone = unmodulated 500Hz carrier frequency. i: 2Hz FM at a modulation index of $A = 9$. ii: 40Hz FM at a modulation index of $A = 1$. C: Spectrograms of dynamic modulation. Reference = unmodulated noise. i: Sparse and slow modulation – 1cpo & -4cps at maximum modulation depth $A = 1$. ii: Dense and fast modulation – 4cpo & -16cps at maximum modulation depth $A = 1$.

Figure 4: Auditory task thresholds for WA and control participants: group data.

Boxplots display interquartile ranges (boxes) and max. to min. range excluding outliers (whiskers) for each of the tasks. There was no group difference found for the frequency discrimination task (A) but for both 2 and 40Hz FM (B) and all three DM (C) detection tasks undertaken in both groups, i.e. for low rates (sparse and slow: 1cpo & -4cps), intermediate (2cpo & -8cps), and high rates combination (dense and fast: 4cpo & -16cps).

Figure 5: Percentage WA participants impaired for the auditory tasks.

Displayed is the percentage of individuals significantly impaired in comparison to the controls, based on Bayesian inference methods, using an uncorrected, two-tailed significance level of $p \leq 0.05$ (Crawford and Garthwaite, 2007).

Figure 6: Scatter plots for significant correlations between the three linguistic measures and DM detection thresholds in WA participants.

Correlations are depicted for DM detection thresholds for the low rate combination (1cpo & -4 cps) as those yielded the strongest correlations with all three linguistic measures: BDAE comprehension percentiles (Spearman's $\rho = -0.93$, $p < 0.001$) (A), spoken-word to picture matching scores (Spearman's $\rho = -0.4$, $p = 0.001$) (B), and phonological discrimination thresholds (C).

Table 1: Biographical information and background data for WA participants.

Participant	Age	Sex	Time post-onset at testing	BDAE comp. (%)	BDAE fluency (%)	BDAE word repetition (%)	sWPM Max 64, cut-off 63	Phon. Discrimination Max 1, cut-off 1.5	RCPM (percentile)
DL	73	M	6 months	3	63	<1	8	10.5	25
LS	84	M	2.5 years	8.5	77	10	19	12.5	75
CB	59	M	14 months	10	38	10	30	13	50
MR	64	M	20 months	10	68	15	32	11	90
RD	86	M	2 years	10	80	10	47	9.5	75
EL	61	M	19 months	14	75	15	30	2	75
AC	53	M	3 years	15	68	<1	47	2	≈ 90
NM	59	M	6 months	17	100	10	50	1	≈ 90
CH	77	M	2 years	40	90	5	53	3.5	95
CW	70	M	3.5 years	45	100	15	51	1	90

BDAE = Boston Diagnostic Aphasia Examination – 3rd Edition (Goodglass et al., 2001), sWPM = spoken-word to picture matching, sentence = sentence and paragraph level comprehension, CSB = Cambridge semantic battery (Bozeat et al. 2000), RCPM = Ravens Coloured Progressive Matrices (Raven, 1962). Phon. Discrimination = Phonological discrimination threshold (Robson et al., 2012a).

Table 2: Age and hearing thresholds for WA participants and controls.

Participant	Age	Left ear pure tone thresholds dB				Right ear pure tone thresholds dB				overall hearing score	
		500hz	1kHz	2kHz	4kHz	500hz	1kHz	2kHz	4kHz		
Wernicke's aphasia	DL	73	30	15	10	15	30	15	15	20	-0.75
	LS	84	25	40	55	65	30	45	65	65	1.58
	CB	59	15	10	5	30	15	15	5	20	-1.15
	MR	66	35	50	45	60	25	10	15	25	0.38
	RD	87	25	20	65	60	30	20	50	65	0.86
	EL	61	20	25	50	65	15	30	45	65	0.74
	AC	54	10	15	5	20	10	20	20	50	-0.86
	NM	59	20	20	30	40	0	5	10	35	-0.77
	CH	77	10	10	15	40	10	20	20	50	-0.65
	CW	70	45	50	60	70	25	35	55	75	1.85
mean	69	23.5	25.5	34	46.5	19	21.5	30	47	0.12	
Control	DW	73	25	15	25	45	25	15	20	40	-0.27
	PB	80	15	20	55	70	15	20	55	65	0.65
	PD	60	15	15	15	35	50	15	15	55	-0.32
	HW	67	25	10	10	15	15	20	5	30	-0.96
	TA	84	20	10	20	40	25	10	20	70	-0.35
	KW	68	15	15	20	55	15	15	30	65	-0.18
	EG	60	15	20	25	45	15	20	35	60	-0.07
	GP	78	40	40	45	70	35	40	50	70	1.60
	DR	71	20	20	40	75	30	15	30	80	0.55
	TT	61	5	5	0	20	5	5	0	5	-1.87

	mean	70.2	19.5	17	25.5	47	23	17.5	26	54	-0.12
t tests	t(18)	0.27	0.88	1.48	0.92	0.06	0.72	0.84	0.45	0.72	0.54
	p	0.79	0.34	0.16	0.37	0.96	0.46	0.42	0.66	0.48	0.60

Overall hearing score derived using a principal component analysis: A single component was extracted accounting for 62% of the variance and used as the overall hearing score. Note that no significant difference were found between groups (see bottom row for results based on t-test for independent samples, two-tailed with a significance level of $p \leq 0.05$).

Table 3: Auditory tests threshold results for WA and control participants.

Participant	Threshold								
	Freq	Frequency			Dynamic Modulation				
		Modulation		40Hz	1cpo &	1cpo &	2cpo &	4cpo &	4cpo &
		2Hz	40Hz		- 4cps	- 16cps	-8cps	- 4cps	- 16cps
Wernicke's aphasia	DL	1	8.15	0.49	0.58	0.85	0.79	0.7	0.95
	LS	0.2	7.68	0.22	0.41	0.66	0.7	0.91	0.95
	CB	1.1	3.7	0.41	0.31	0.32	0.38	0.22	0.84
	MR	0.5	3.89	0.13	0.47	0.86	0.92	0.94	0.95
	RD	0.2	2.14	0.1	0.38	0.44	0.98	0.64	0.98
	EL	0.4	3.8	0.07	0.3	0.53	0.28	0.53	0.75
	AC	0.63	6.74	0.06	0.19	0.25	0.51	0.13	0.89
	NM	0.67	1.95	0.13*	0.23	0.22	0.31	0.29	0.52
	CH	0.8	2.67	0.19	0.2	0.44	0.43	0.74	0.95
	CW	0.5	2.4	0.14	0.18	0.22	0.35	0.49	0.92
	mean	0.6	4.312	0.194	0.325	0.479	0.565	0.559	0.87
Controls	DW	0.37	1.9	0.08	0.13		0.3		0.53
	PB	0.7	1.94	0.08	0.15		0.45		0.54
	PD	0.53	3.1	0.06	0.1		0.18		0.35
	HW	0.13	2.42	0.05	0.12		0.19		0.34
	TA	0.47	2.4	0.01	0.1		0.16		0.37
	KW	0.33	1.52	0.07	0.06		0.19		0.45
	EG	0.87	1.68	0.06	0.12		0.18		0.48

	GP	1.1	3.2	0.12	0.16	0.54	<i>0.61</i>
	DR	0.47	1.88	0.09	0.14	0.28	0.59
	TT	0.6	2.75	0.04	0.09	0.25	0.43
	mean	0.557	2.291	0.066	0.117	0.272	0.469
t tests	t(18)	0.33	2.64	2.74	4.8	3.18	7.4
	p	ns	0.017	0.013	<0.001	0.005	<0.001

Freq = frequency discrimination; ns = non-significant at the level of $p \leq 0.05$; p values marked in **bold** = surviving Bonferroni correction; individual threshold in **bold** = significantly elevated based on (Crawford and Garthwaite, 2007); * = borderline outside normal limits $p = 0.06$ two-tailed; individual thresholds marked in *italics* = unreliable threshold value.

Table 4: Correlations between auditory FM and DM thresholds and linguistic measures in WA participants.

		2Hz FM	40 Hz FM	1cpo & - 4cps DM	1cpo & - 16cps DM	2cpo & - 8cps DM	4cpo & - 4cps DM	4cpo & - 16cps DM
BDAE comprehension	ρ	<i>-0.64</i>	-0.40	<i>-0.93</i>	<i>-0.74</i>	<i>-0.61</i>	-0.40	-0.41
	p	<i>0.022</i>	ns	<i><0.001</i>	<i>0.007</i>	<i>0.031</i>	ns	ns
sWPM	ρ	<i>-0.74</i>	-0.36	<i>-0.77</i>	<i>-0.65</i>	<i>-0.26</i>	<i>-0.21</i>	<i>-0.08</i>
	p	<i>0.007</i>	ns	<i>0.004</i>	<i>0.020</i>	ns	ns	ns
Phonological discrimination	ρ	0.51	<i>0.55</i>	<i>0.74</i>	<i>0.64</i>	<i>0.55</i>	0.43	0.44
	p	ns	<i>0.051</i>	<i>0.007</i>	<i>0.022</i>	<i>0.048</i>	ns	ns

BDAE = Boston Diagnostic Aphasia Examination (Goodglass et al., 2001) auditory comprehension percentile.

sWPM = spoken word to picture match (Bozeat et al., 2000). Phonological discrimination = phonological

discrimination threshold (Robson et al., 2012). Spearman's ρ correlation coefficients and p values from one-tailed

tests. *In italics* are those that are significant at the level of $p \leq 0.05$ (including borderline $p = 0.051$), and in **bold** those that survive Bonferroni correction ($n=7$).