



OPEN ACCESS

## CASE REPORT

# Cerebral tuberculomas in a 6-year-old girl causing central diabetes insipidus

Shavindra Chellen,<sup>1</sup> Elizabeth Whittaker,<sup>2,3</sup> Michael Eisenhut,<sup>4</sup> Louis Grandjean<sup>2</sup>

<sup>1</sup>Paediatric Speciality Trainee, Imperial College Healthcare NHS Trust, London, London, UK

<sup>2</sup>Consultant Paediatric Infectious Diseases and Immunology, Imperial College Healthcare NHS Trust, St Mary's Hospital, London, UK

<sup>3</sup>Department of Academic Paediatrics, Imperial College, London, UK

<sup>4</sup>Consultant Paediatrician, Luton and Dunstable University Hospital NHS Foundation Trust, Luton, UK

## Correspondence to

Dr Shavindra Chellen, schellen@nhs.net

Accepted 9 October 2018

## SUMMARY

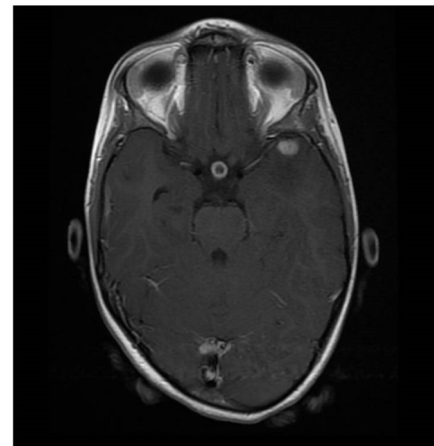
A 6-year-old girl presented acutely with worsening frontal headaches. She had a 3-month history of lethargy, reduced appetite, weight loss, cough and intermittent fevers. A chest X-ray showed a left upper lobe consolidation, and a CT head showed multiple enhancing lesions with significant surrounding oedema in both cerebral hemispheres. Due to the strong suspicion of tuberculosis (TB), she was admitted and treated with anti-TB therapy and steroids. Following this, pulmonary infection with *Mycobacterium tuberculosis* was confirmed by a positive PCR from induced sputum. Cerebral spinal fluid (CSF) analysis was normal and tested negative for *M. tuberculosis* on PCR. During her first week of treatment, she developed polyuria, nocturia and polydipsia and was diagnosed with central diabetes insipidus. She was started on desmopressin which rapidly improved her symptoms, and she was continued on desmopressin for 3 months. Currently, she remains well and has shown a good response to TB treatment.

## BACKGROUND

This case illustrates an unusual extrapulmonary complication of tuberculosis (TB) with a cerebral tuberculoma affecting the pituitary axis. TB affecting the central nervous system (CNS) is uncommon with only 4.2% of cases reported in England in 2017.<sup>1</sup> Tuberculomas affecting the hypothalamic pituitary axis are rare but have been reported in the literature.<sup>2–4</sup>

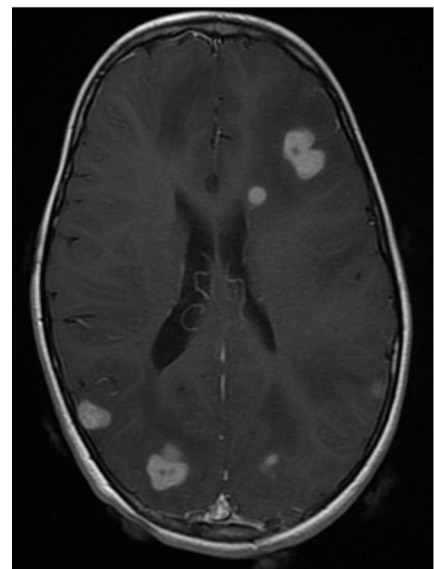
In our patient, the symptoms of diabetes insipidus (DI) only became apparent following her admission and treatment. This raises the curious point of whether this was the natural course of her illness; or whether the initiation of TB treatment caused a paradoxical increase in her cerebral tuberculomas prior to the eventual improvement of her TB.<sup>5</sup>

TB is a significant global disease with the WHO estimating the total number of annual cases and deaths in children (aged 0–14) at 1 040 000 and 253 000, respectively, in 2016.<sup>6</sup> In 2016, the incidence of TB in England was 10.2 per 100 000 with 5664 cases reported in total. Of all these cases, 204 occurred in children (aged 0–14). In England, the incidence of TB is over three times higher in non-UK-born children compared with UK-born children with rates of 6.8 per 100 000 and 1.8 per 100 000, respectively. The top three countries for TB incidence in non-UK-born children are India, Pakistan and Somalia. As expected, the incidence of TB varies based on geographical area;



**Figure 1** Pituitary tuberculoma, MRI, axial view, T1 with gadolinium.

with the highest incidence in major cities such as London and Leicester. Moreover, within London, there is also significant variation; with areas such as Newham having an annual incidence of 69 per 100 000 and the City of London having an annual incidence of 3.8 per 100 000.<sup>1</sup> The country of birth and where the patient currently lives should form part of the routine paediatric history but it is especially important when TB is suspected.

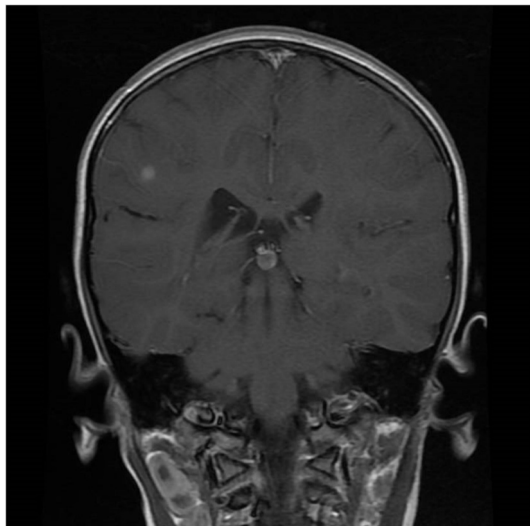


**Figure 2** Diffuse tuberculomas throughout the cerebral hemispheres, MRI, axial view, T1 with gadolinium.



© BMJ Publishing Group Limited 2018. Re-use permitted under CC BY-NC. No commercial re-use. See rights and permissions. Published by BMJ.

**To cite:** Chellen S, Whittaker E, Eisenhut M, et al. *BMJ Case Rep* Published Online First: [please include Day Month Year]. doi:10.1136/bcr-2018-226590



**Figure 3** Pituitary tuberculoma, MRI, coronal view, T1 with gadolinium.

**CASE PRESENTATION**

A 6-year-old girl presented acutely to her local hospital with a 2-day history of vomiting. She had a 1-week history of worsening frontal headaches that woke her up from sleep and reported to be worse in the morning. In addition, she had a 3-month history of lethargy, reduced appetite, weight loss, cough and intermittent fevers. She was born in the Yemen and moved to Somalia, Kenya and then to the UK. There were no known TB contacts, her family was well and past medical history was unremarkable. She was vaccinated and had received BCG immunisation at birth, leaving a scar. On initial examination, she was afebrile and clinically stable with normal neurology. She was admitted and commenced on broad-spectrum antibiotics, anti-TB therapy and steroids. On day 4 of admission, it was noticed that she had polyuria, polydipsia and nocturia and was subsequently diagnosed and treated for central DI.

**INVESTIGATIONS**

Her admission blood test results showed a haemoglobin of 11.3 g/dL, mean corpuscular volume of 68.4 fL, white cell count (WCC) of  $14.4 \times 10^9/L$  (neutrophilia  $12.0 \times 10^9/L$ ), C reactive protein of 140 mg/L, erythrocyte sedimentation rate of 114 mm/hour and albumin of 33 g/L. A blood film confirmed a microcytic anaemia and neutrophilia. HIV and hepatitis C serology were negative, and her CSF had 4 WCC, no organisms, and normal glucose and protein. Subsequent Polymerase Chain Reaction (PCR) on her CSF was negative for *Mycobacterium tuberculosis*.

A CT brain on admission showed multiple ring-enhancing lesions with significant surrounding cerebral oedema noted in both hemispheres which were highly suggestive of an infective process. An admission MRI brain (figures 1–3) and spine supported that these cerebral lesions were in keeping with tuberculomas. It was also noted that a suprasellar lesion was associated with the infundibulum of the pituitary gland, and there was no spinal involvement.

A CT chest showed further radiological evidence of TB with necrotic lymph nodes and miliary shadowing in the lungs. Ultrasound abdomen was normal. A PCR on induced sputum was positive for *M. tuberculosis* on day 4 of admission. PCR on gastric lavage had been negative at the referring hospital.

A water deprivation test was not performed during her acute admission. A follow-up urine and serum osmolality was performed at 4 months from the start of anti-TB treatment when our patient had been off desmopressin for 2 weeks. The results were obtained after overnight fluid deprivation and were normal.

**DIFFERENTIAL DIAGNOSIS**

Initially, it was considered that her polyuria might have been related to an osmotic diuresis caused by hyperglycaemia secondary to corticosteroids. However, blood sugar monitoring was within normal limits, and there was no glycosuria. Hence, this was eliminated from the differential. There was no evidence of a urinary tract infection.

A diagnosis of central DI caused by a compressive tuberculoma in the suprasellar region was considered. Central DI is characterised by impairment of antidiuretic hormone (ADH) secretion, and it can be partial with some residual ADH secretion or complete with no ADH secretion.

Factors supporting this diagnosis were:

- ▶ Abrupt onset of the polydipsia, polyuria and nocturia.
- ▶ Location of the lesion on MRI with the potential for tuberculomas to initially enlarge and then resolve when treatment is started.<sup>5</sup>
- ▶ High normal level of Sodium (Na) (table 1)—true hypernatraemia should not occur unless there is impaired thirst or lack of access to water.<sup>7</sup>

The random urinary osmolality of 515 mosmol/kg provides equivocal evidence for DI as this figure falls within a normal range.<sup>8</sup>

Other causes of central DI include:

- ▶ Idiopathic
- ▶ Primary or secondary tumours<sup>8</sup>—no radiological evidence to support this in our patient's imaging.

The other important differentials were primary polydipsia and nephrogenic DI. Primary polydipsia is caused by a suppression of ADH secretion due to excessive fluid intake. It is further divided into psychogenic, where polydipsia is driven by behavioural or cognitive problems and dipsogenic, characterised by abnormal thirst. In primary DI, we would expect to see a low normal plasma sodium. It can be difficult to differentiate between primary polydipsia and partial central DI.<sup>9</sup>

Nephrogenic DI is characterised by normal ADH secretion but an impairment of ADH action at the level of the kidney. Acquired cause of nephrogenic DI that were considered include:

- ▶ Drugs for example, lithium—our patient was not on any drugs known to cause DI.
- ▶ Hypokalaemia/hypercalcaemia—normal potassium and calcium.

	Day 1	Day 4	Day 11	Day 12*	Day 13
Blood electrolytes (mmol/L)					
Na	143	141	N	142	139
K	4.4	4.0	N	4.5	5.6
Urea	3.3	2.5	N	4.7	3.4
Cr	108	49	N	43	45
Glucose		6		10.7	6.1
Urine osmolality (mosmol/kg)			515		115

\*D12: desmopressin is started.  
N, no data

Table 2 Initial hormones

	D7	D11	D12	D18	Normal range
Thyroid Stimulating Hormone (TSH), milliunit/L	2.04	4.60		5.87	0.27–4.20
T3, pmol/L		4.3			2.5–5.7
T4, pmol/L	14.4	13.0		22.5	11–22
Cortisol, nmol/L	136	270			
Luteinising hormone, IU/L	<0.5	<0.5			Normal high <0.5
Follicle stimulating hormone, IU/L	0.7				Normal high <5.0
Insulin-like growth factor 1, nmol/L			15.9		3–52
Growth hormone, µg/L			0.17		

- Renal failure/postobstructive uropathy<sup>7</sup>—normal renal function and normal abdominal ultrasound.

Further evidence against a nephrogenic DI was the successful response to treatment on starting desmopressin.

## TREATMENT

On admission to her local hospital, our patient was started on intravenous fluids, ceftriaxone and metronidazole. She was started on these broad-spectrum antibiotics to cover for sepsis and abscess forming bacteria such as *Staphylococcus aureus*, *Streptococcus* spp and anaerobes in keeping with local antimicrobial guidelines.<sup>10</sup> Based on her clinical history, initial bloods and CT brain, it was felt that her symptoms were caused by TB, and she was subsequently started on quadruple anti-TB drugs (isoniazid, rifampicin, pyrazinamide, moxifloxacin), corticosteroids, pyridoxine and lansoprazole for gastroprotection. She was transferred to a tertiary hospital for ongoing care. Ceftriaxone and metronidazole were discontinued when the diagnosis of TB was confirmed by PCR on day 4 of admission.

Her DI was treated with desmopressin 50 µg twice daily on day 12 of admission and effectively treated her polyuria, polydipsia and nocturia. She remained an inpatient for 14 days and was well throughout. On starting desmopressin, blood electrolytes were measured 12 hourly for the first 24 hours then on alternate days for 4 days and then weekly until desmopressin was discontinued. The main reason for electrolyte monitoring was to observe for a dilutional hyponatraemia which can occur when treating with desmopressin.<sup>7</sup> Her electrolytes remained normal throughout. She continued on desmopressin for 10 weeks which was continued at the same dose for 6 weeks and then weaned over a 4-week period. She was advised to drink as normal. Her steroids were weaned and discontinued at 10 weeks. Prior to discontinuing desmopressin and steroids, an MRI was performed.

An important aspect of our inpatient care was the involvement of the play therapists and school teachers. Our patient was treated in an isolation cubicle throughout her 14-day admission.

## OUTCOME AND FOLLOW-UP

Our patient is currently 9 months into her TB treatment and remains well and fully independent. Radiologically, there has been a good response to TB treatment confirmed by an interval MRI brain at 2 months; of note, the enhancement of the suprasellar lesion was less marked. Thyroid function tests were initially normal in our patient but a subclinical hyperthyroidism

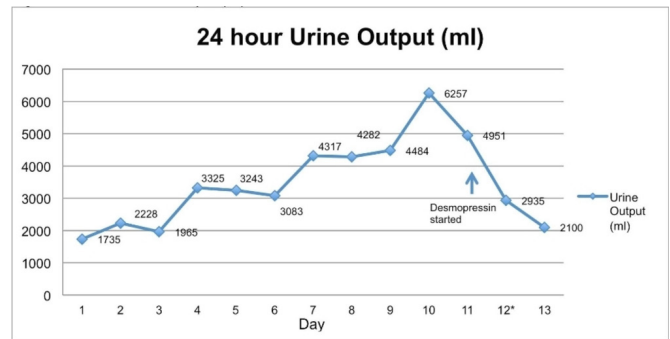


Figure 4 Twenty-four-hour urine output (mL).

occurred at 2 weeks (see table 2). This was not treated and returned to normal 2 weeks later. She completed 3 months of desmopressin and has now been off desmopressin for 6 months.

## DISCUSSION

TB affecting the CNS is uncommon.<sup>1</sup> It may present with symptoms of meningism, nausea, headache, photophobia, vomiting, sleep disturbance, seizures, reduced consciousness and focal neurological deficit.<sup>11</sup> Tuberculomas within the CNS may exert compressive effects that may produce unusual neurological symptoms. DI is a recognised rare complication of cerebral tuberculomas and TB meningitis.<sup>2 3 7 12</sup> Our patient presented with cerebral and pulmonary TB with symptoms of DI manifesting after the commencement of anti-TB treatment.

The UK offers BCG vaccination for children at high risk, including those from regions where the annual incidence of TB is 40/100 000 or greater.<sup>13</sup> The BCG vaccine offers greater protection against meningeal and miliary TB when given in infancy or at school age.<sup>14</sup> Our patient received the BCG vaccination as an infant but it has been noted that there is no evidence of a protective effect of the BCG against TB in patients vaccinated close to the equator (latitudes <20°).<sup>14</sup>

In figure 4, it can be seen that our patient's urine output peaked at day 10 and then started to improve on day 11 prior to starting desmopressin. This improvement may be explained by an initial resolution of the pituitary tuberculoma but it is hard to say whether the DI would have resolved on solely treating the pituitary tuberculoma—a balance must be taken between watching and waiting versus treating.

Another consideration is whether a paradoxical enlargement of the pituitary tuberculoma occurred on commencement of treatment. Paradoxical reactions when starting TB treatment is a recognised complication; patients experience a worsening of pre-existing tuberculous lesions or the appearance of new lesions which may manifest as new neurological symptoms.<sup>15</sup> Paradoxical reactions are separate from treatment failure, drug toxicity, multidrug resistance, coexistent infections or medical conditions. The mechanism of paradoxical reactions remains unclear but an exaggerated immune response to TB-associated antigens may offer an explanation.<sup>5</sup> In our patient, comparison of the MRIs performed at D2 and D12 did not show improvement or enlargement of the suprasellar lesion, and there was mild improvement of the tuberculomas located in the cerebral hemispheres. This radiological finding goes against a paradoxical reaction in our patient. Additionally, our patient was started on steroids as part of her initial therapy; this is believed to improve neurological symptoms and outcomes in patients with cerebral tuberculomas. However, steroids do not prevent paradoxical reactions in all patients.<sup>15</sup>

Figure 5. Investigating an inpatient with polyuria [7,8]

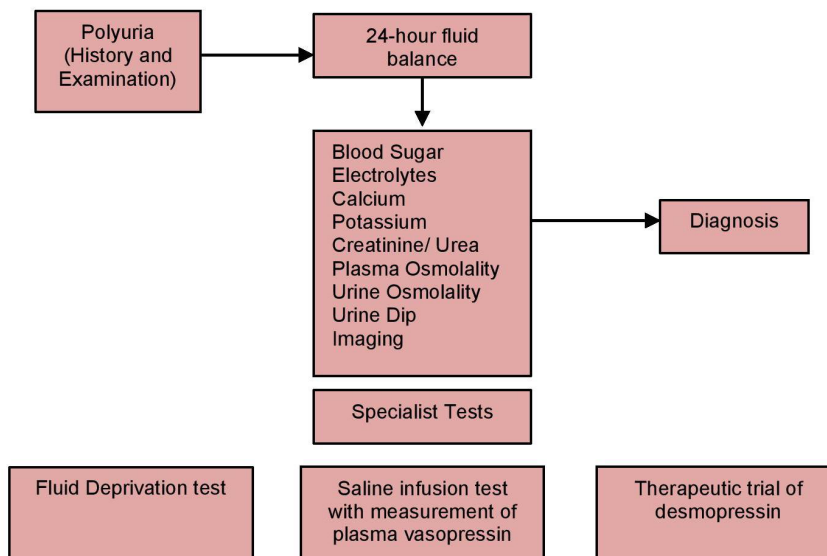


Figure 5 Investigating an inpatient with polyuria.<sup>7,8</sup>

Patient's perspective

We are very glad that we can write our perspective in this journal because we wanted to tell everyone about the excellent care we received. Luton and Dunstable Hospital & St Mary's Hospital your staff are amazing and they were so attentive to all of our needs. We are extremely impressed with the level of care that our daughter received and the kindness and compassion of your staff. Thank you.

We would like to thank Dr Michael Eisenhut who first diagnosed the disease and every other doctor and nurse that took care of us during our stay. Each and everyone was kind and compassionate. I cannot say enough about our doctors, the nurses and surgical staff—just EVERYONE was so good to us and we received EXCELLENT care, before, during and after.

Learning points

- ▶ Young children are at high risk of progression of tuberculosis disease, including central nervous system (CNS) disease.
- ▶ Nocturnal headaches in a patient with tuberculosis should trigger investigation of the CNS for tuberculomas.
- ▶ Radiological screening of the CNS is mandatory in all patients with miliary tuberculosis.
- ▶ Patients with CNS tuberculomas in the region of the pituitary require regular neurological assessment and should have prompt additional investigation of the hypothalamic pituitary axis.
- ▶ Tuberculomas sited near the pituitary can cause both suppression and overactivation of the hypothalamic pituitary axis.
- ▶ The initial approach to investigating a patient with diabetes insipidus requires an accurate 24-hour fluid balance.

In a patient with radiological evidence of a tuberculoma sited near the suprasellar region, it is important to be vigilant for clinical signs of suppression or overactivation of the hypothalamic pituitary axis.<sup>4</sup> A baseline and interval set of pituitary hormones may help identify a subclinical condition and allow early re-imaging and intervention if necessary. Table 2 illustrates that our patient initially had normal TSH, T3, T4, cortisol, luteinising hormone (LH), FSH, insulin-like growth factor (IGF) 1, growth hormone (GH); however, it was noted that she became subclinically hyperthyroid at 2 weeks. This was not treated and resolved at 1 month. A recommended set of pituitary hormones that should be performed include: TSH, T3, T4, cortisol, LH, FSH, GH, IGF and prolactin. These hormones should be repeated several weeks into anti-TB treatment.

Acquired causes of central DI are more common than inherited causes with idiopathic central DI forming the largest group accounting for 29% of cases.<sup>16</sup> Other causes of central DI include malignancy (eg, craniopharyngioma, infection and trauma).<sup>7</sup> Figure 5 outlines a general approach to investigating polyuria and polydipsia in a paediatric inpatient.

**Acknowledgements** Thank you to Dr. M Coren and Dr. N Bridges, Consultant Paediatric Endocrinology, for their advice regarding investigation and management of this child.

**Contributors** The corresponding author, SC, was responsible for drafting this article. EW, LG and ME were responsible for critical revisions of the article. ME, EW, LG and SC were all involved in the care of this patient. ME obtained consent. EW supervised the overall process.

**Funding** EW is funded by a Wellcome Trust Global Health Research Seed Grant PS3167

**Competing interests** None declared.

**Patient consent** Obtained.

**Provenance and peer review** Not commissioned; externally peer reviewed.

**Open access** This is an open access article distributed in accordance with the Creative Commons Attribution Non Commercial (CC BY-NC 4.0) license, which permits others to distribute, remix, adapt, build upon this work non-commercially, and license their derivative works on different terms, provided the original work



is properly cited and the use is non-commercial. See: <http://creativecommons.org/licenses/by-nc/4.0/>

## REFERENCES

- Public Health England. *Tuberculosis in England: 2017*. London: Public Health England, 2017.
- Satyarthee GD, Mahapatra AK. Diabetes insipidus in sellar-suprasellar tuberculoma. *J Clin Neurosci* 2003;10:497–9.
- Jain R, Kumar R. Suprasellar tuberculoma presenting with diabetes insipidus and hypothyroidism—a case report. *Neurol India* 2001;49:314–6.
- Sharma MC, Arora R, Mahapatra AK, et al. Intrasellar tuberculoma—an enigmatic pituitary infection: a series of 18 cases. *Clin Neurol Neurosurg* 2000;102:72–7.
- Garg RK, Malhotra HS, Kumar N, 2014. *J Neurol Sci* Paradoxical reaction in HIV negative tuberculous meningitis;340(1-2):26–36 <http://doi.org/>.
- World Health Organization. *Global tuberculosis report 2017*. Geneva: World Health Organization, 2017.
- Baylis PH, Cheetham T Diabetes Insipidus. *Archives of Disease in Childhood* 1998;79:84–9.
- Marshall W, Bangert S. *Clinical chemistry*. Edinburgh: Mosby, 2008.
- Robertson GL. Diabetes insipidus: Differential diagnosis and management. *Best Pract Res Clin Endocrinol Metab* 2016;30:205–18.
- Imperial College Healthcare NHS Trust (2017). *Anti-infective Guideline – First Line Drug choice for Children presenting with Specific Infectious Syndromes v6.0*.
- Dutta P, Bhansali A, Singh P, et al. Suprasellar tubercular abscess presenting as panhypopituitarism: a common lesion in an uncommon site with a brief review of literature. *Pituitary* 2006;9:73–7.
- Joint Committee on Vaccination and Immunisation (2011). *Tuberculosis: the green book, chapter 32*. <https://www.gov.uk/government/publications/tuberculosis-the-green-book-chapter-32>
- Mangtani P, Abubakar I, Ariti C, et al. Protection by BCG vaccine against tuberculosis: a systematic review of randomized controlled trials. *Clin Infect Dis* 2014;58:470–80.
- Afghani B, Lieberman JM. Paradoxical enlargement or development of intracranial tuberculomas during therapy: case report and review. *Clin Infect Dis* 1994;19:1092–9.
- Cerbone M, Visser J, Bulwer C, et al. G356 Decision making management guideline for patients. *Archives of Disease in Childhood* 2018;103:A144–A145 <http://dx.doi.org/10.1136/archdischild-2018-rcpch.346>
- Lorber J, Diabetes insipidus following tuberculous meningitis. *Arch Dis Child* 1958;33:315–9 <http://dx.doi.org/10.1136/adc.33.170.315>

Copyright 2018 BMJ Publishing Group. All rights reserved. For permission to reuse any of this content visit <http://group.bmj.com/group/rights-licensing/permissions>.

BMJ Case Report Fellows may re-use this article for personal use and teaching without any further permission.

Become a Fellow of BMJ Case Reports today and you can:

- ▶ Submit as many cases as you like
- ▶ Enjoy fast sympathetic peer review and rapid publication of accepted articles
- ▶ Access all the published articles
- ▶ Re-use any of the published material for personal use and teaching without further permission

For information on Institutional Fellowships contact [consortiasales@bmjgroup.com](mailto:consortiasales@bmjgroup.com)

Visit [casereports.bmj.com](http://casereports.bmj.com) for more articles like this and to become a Fellow