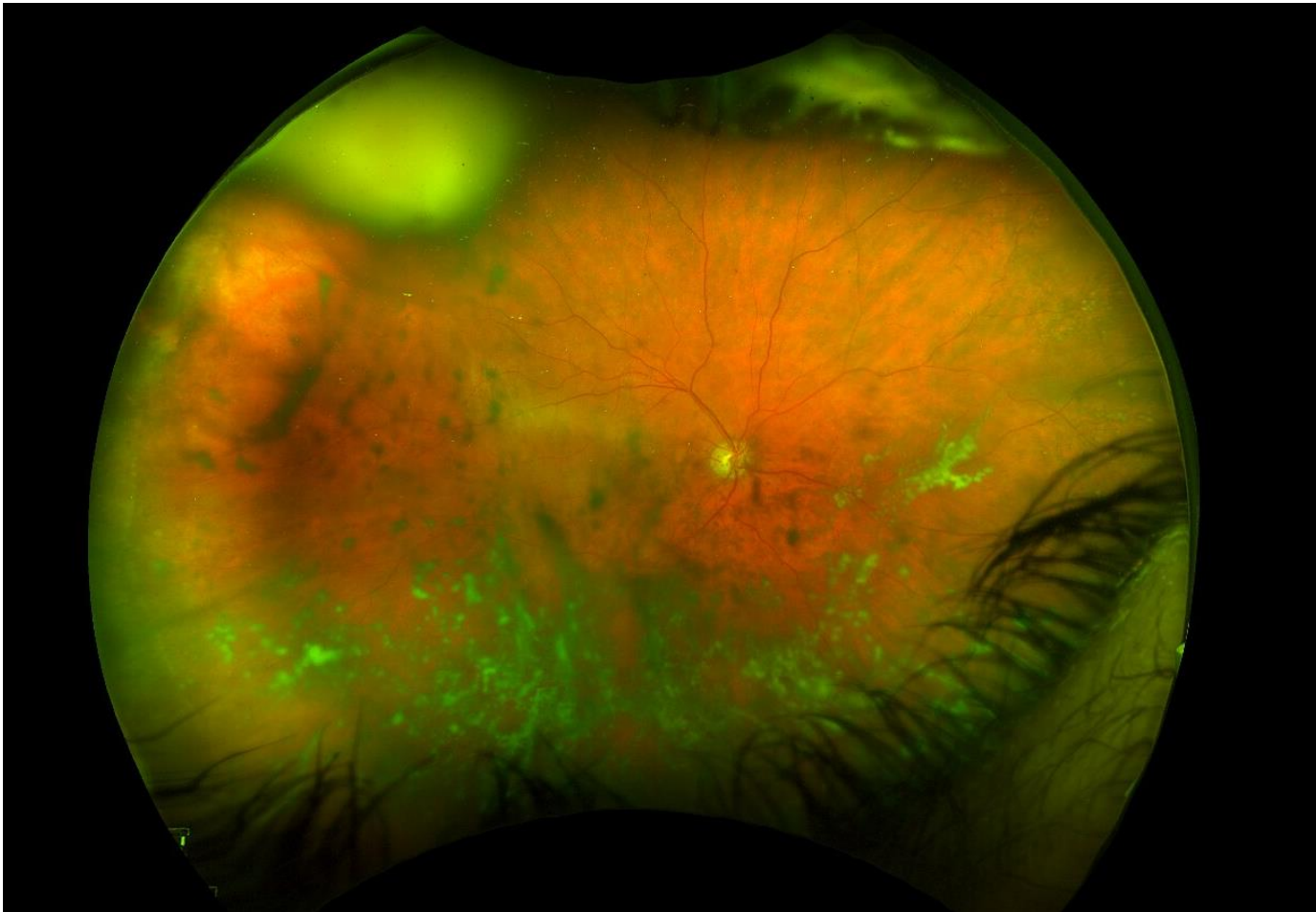
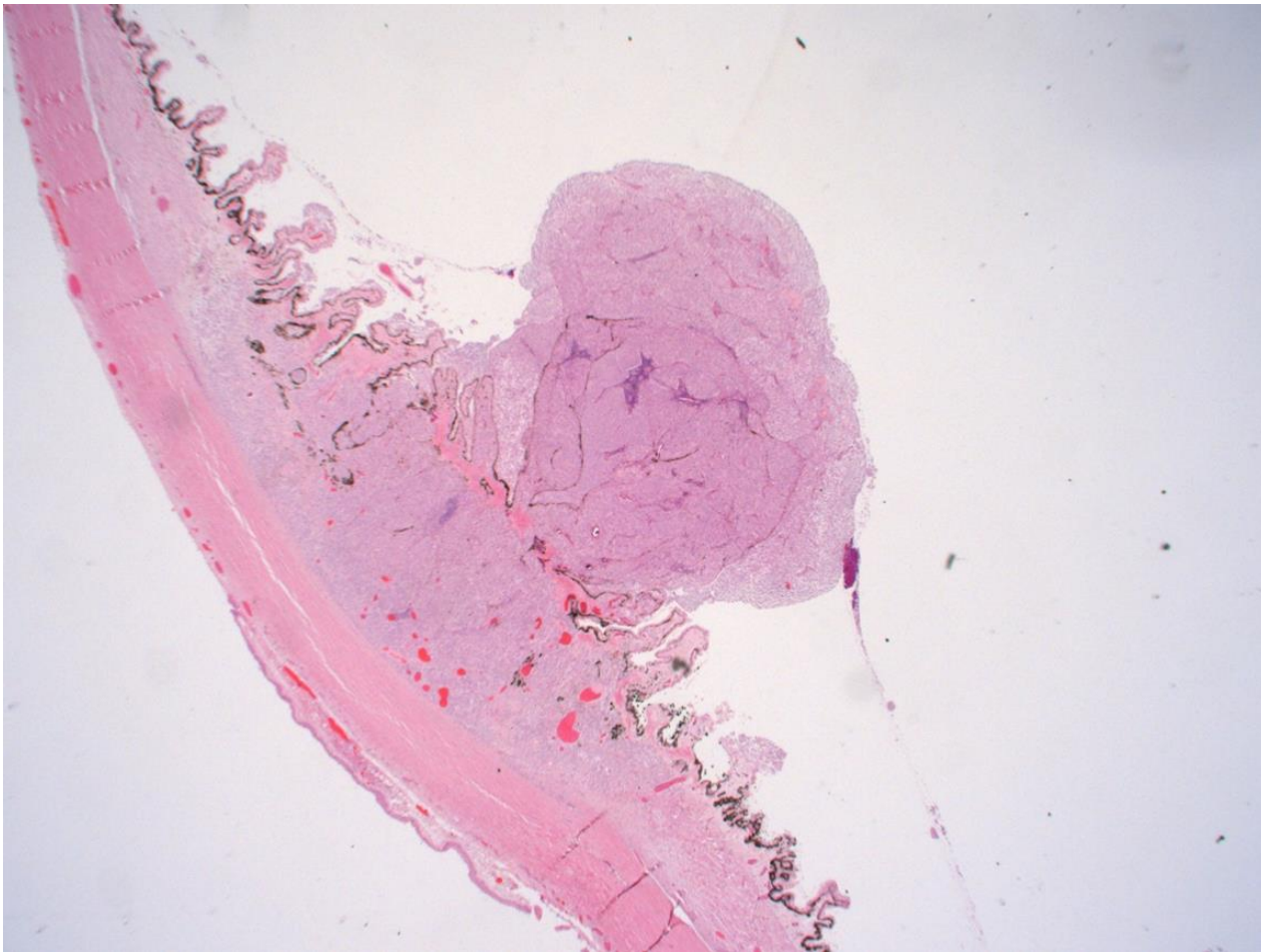


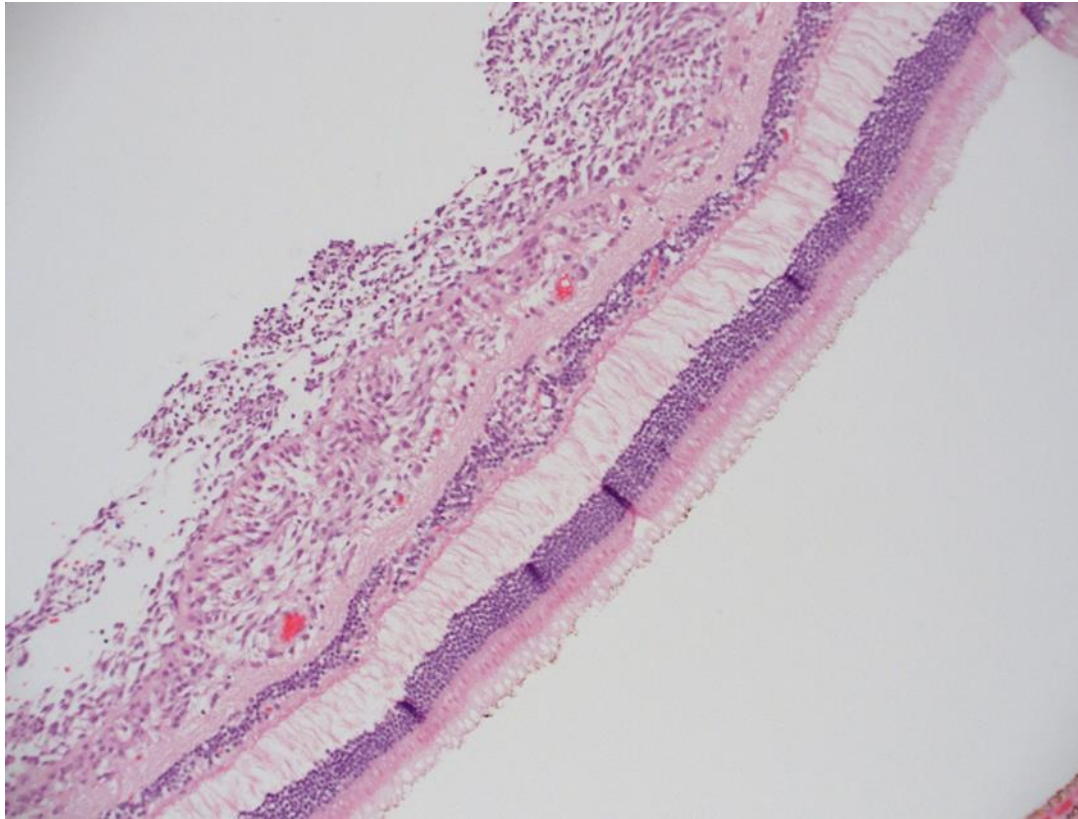
On presentation the supero-temporal amelanotic ciliary body lesion measured 5.3 mm in thickness and over 6.8 mm in diameter on ocular ultrasound, with no detectable internal blood flow on Doppler ultrasound.



Four months after initial presentation, new vitreous opacities in the right eye were observed inferiorly. The superotemporal amelanotic ciliary body mass remained stable compared to Figure 1.



This histological section shows the ciliary body melanoma with 30% epithelioid component and little melanin pigmentation. The tumour infiltrated the inferior iris stroma, the angle and trabecular meshwork and there were tumour cells on the posterior corneal surface.



This other histological section from the enucleation specimen shows the retina which is coated by tumour cells with focal intraretinal infiltration.