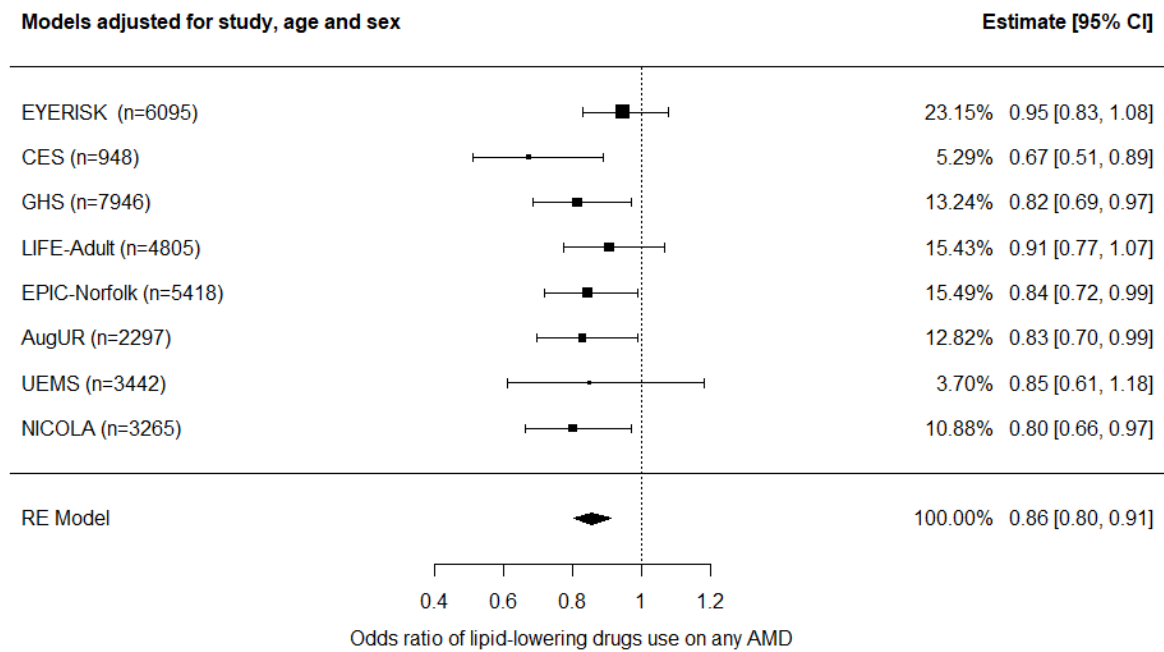
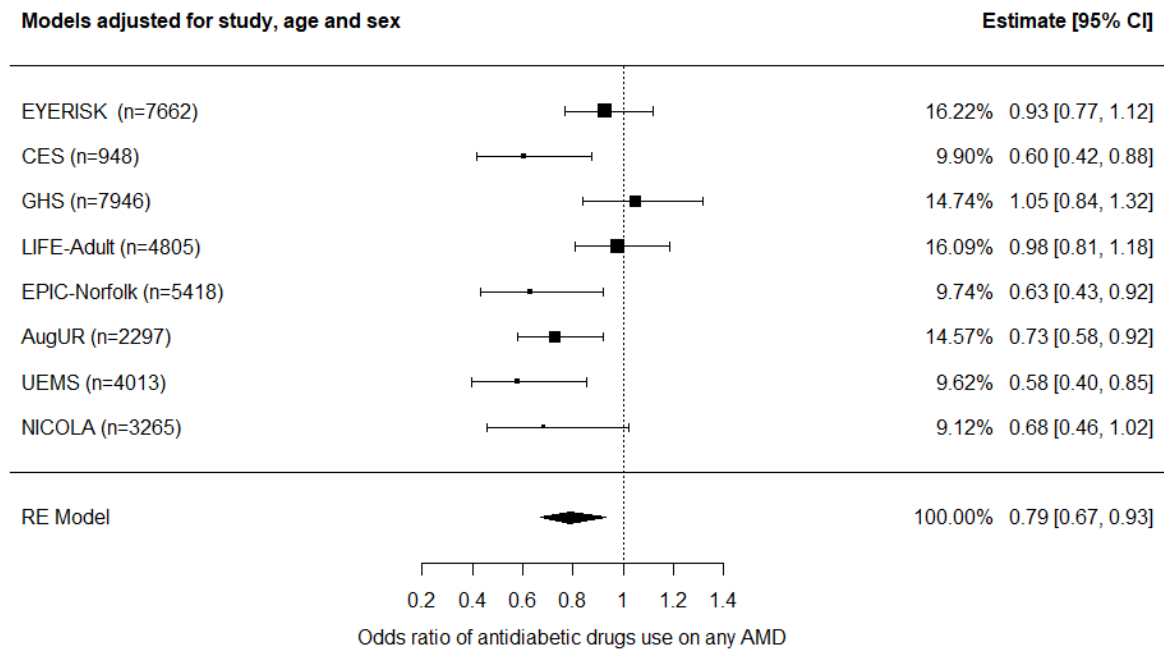


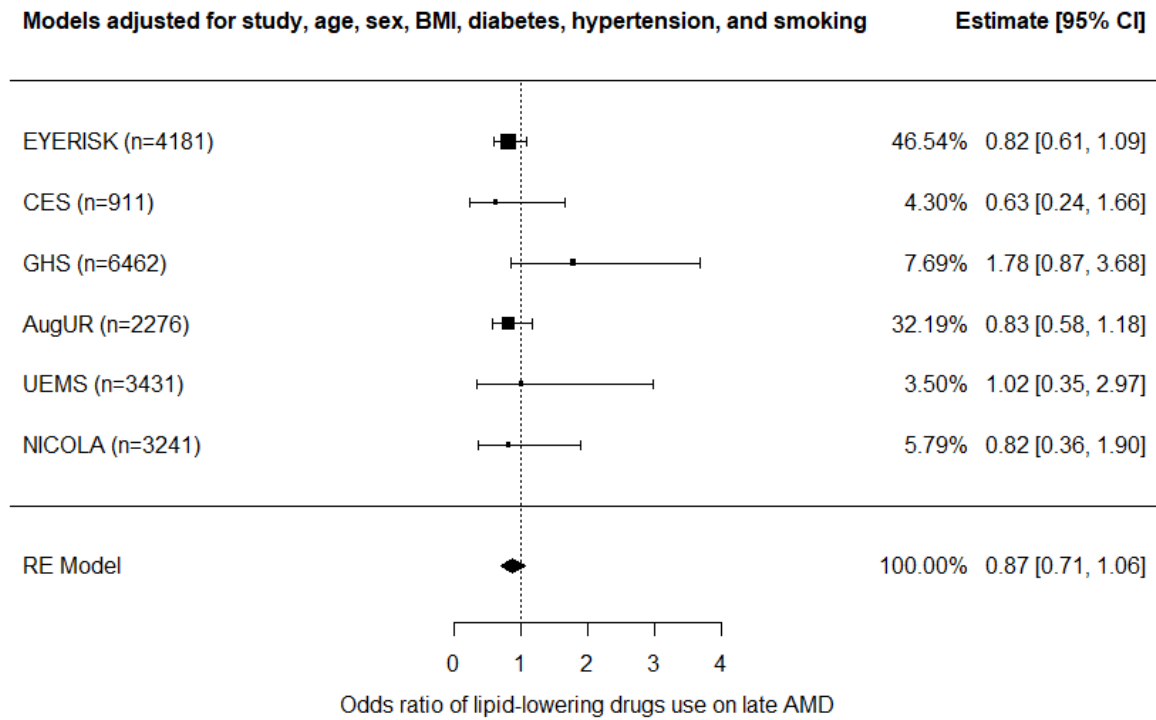
Supplemental figure 1. Forest plot of meta-analyzed associations of lipid-lowering drugs with prevalent AMD (model 1; RE=random-effects)



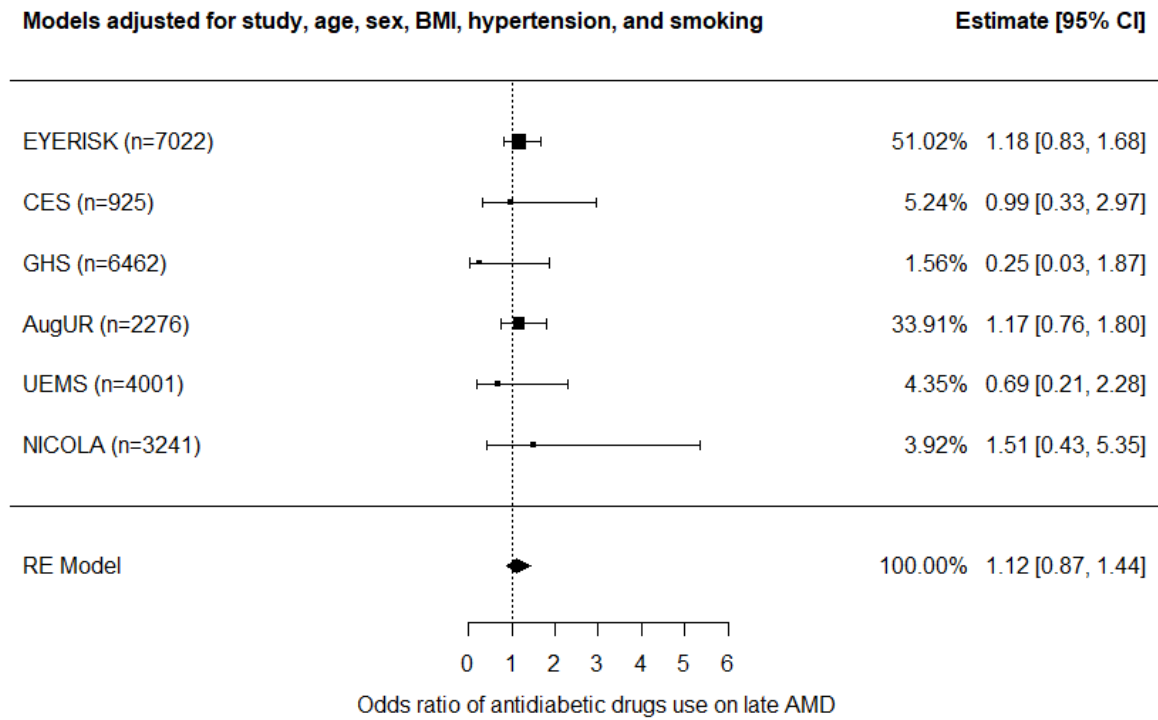
Supplemental figure 2. Forest plot of meta-analyzed associations of anti-diabetic drugs with prevalent AMD (model 1; RE=random-effects)



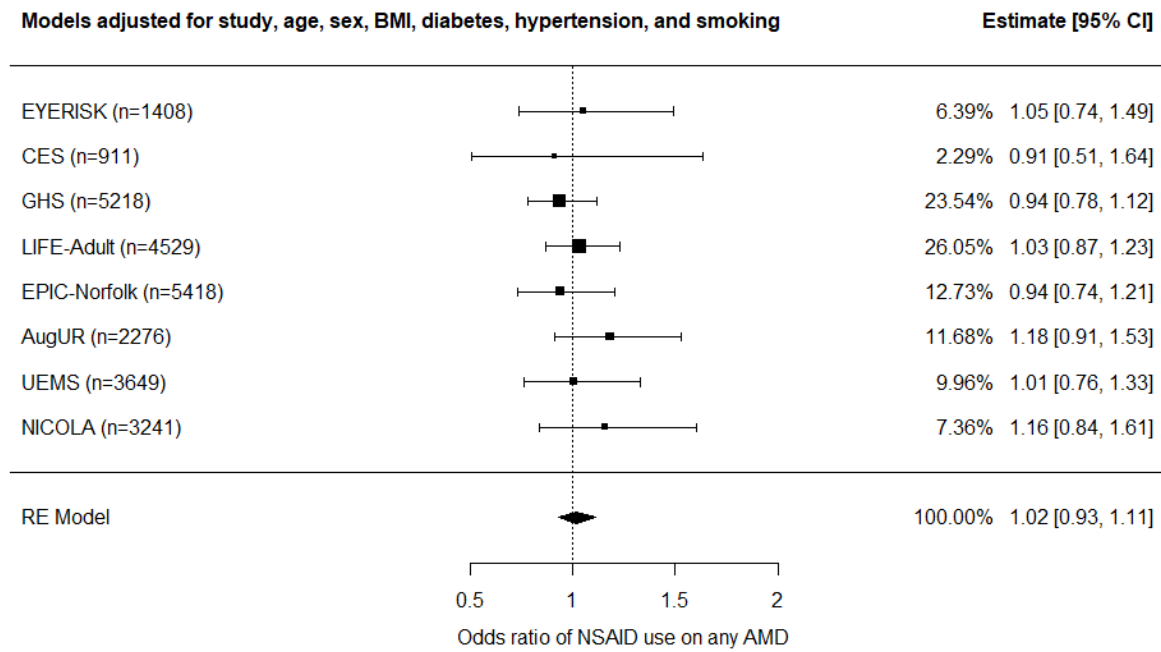
Supplemental figure 3. Forest plot of meta-analyzed associations of lipid-lowering drugs with late AMD (model 2; RE=random-effects)



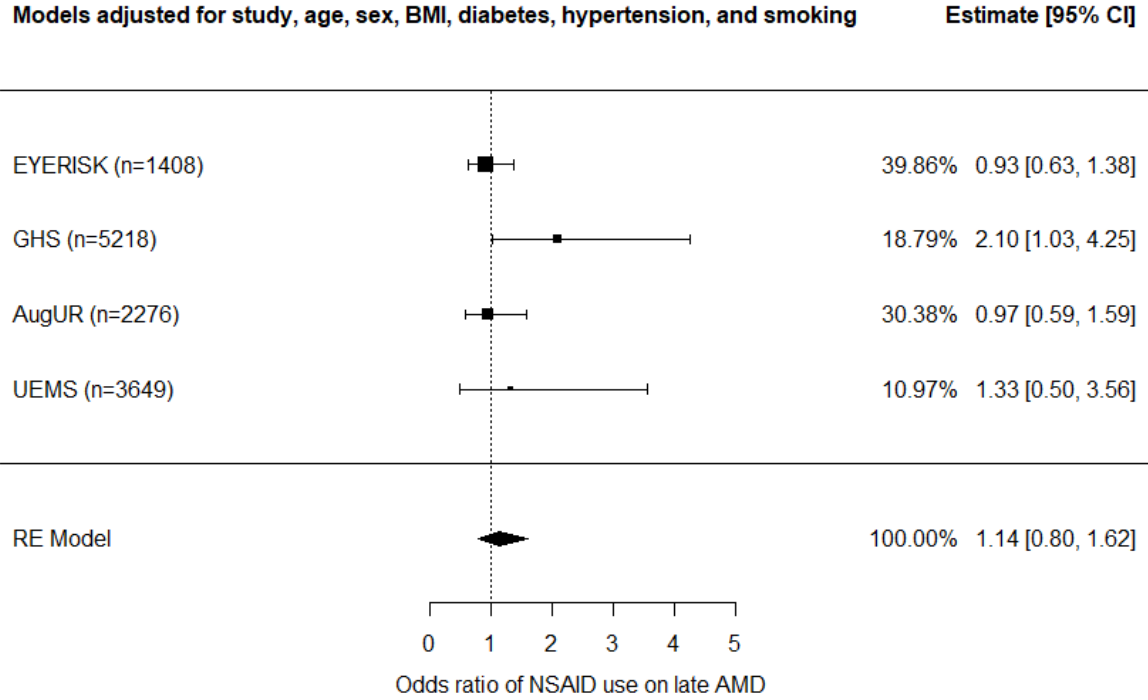
Supplemental figure 4. Forest plot of meta-analyzed associations of anti-diabetic drugs with late AMD (model 2; RE=random-effects)



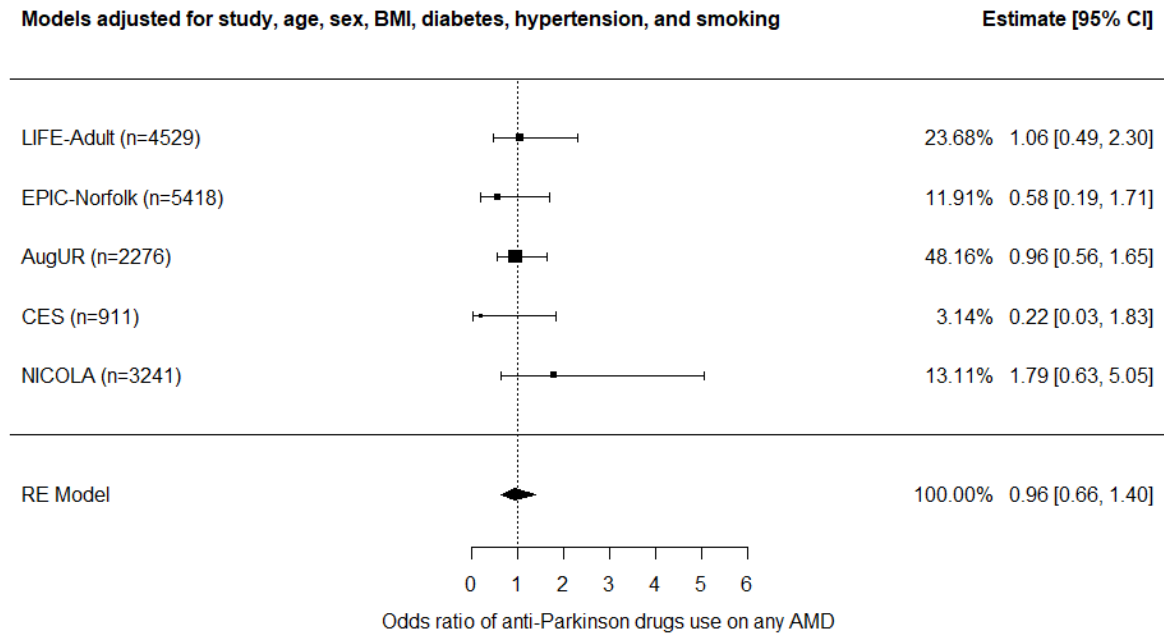
Supplemental figure 5. Forest plot of meta-analyzed associations of NSAID with prevalent AMD (model 2; RE=random-effects)



Supplemental figure 6. Forest plot of meta-analyzed associations of NSAID with late AMD (model 2; RE=random-effects)



Supplemental figure 7. Forest plot of meta-analyzed associations of anti-Parkinson drugs with prevalent AMD (model 2; RE=random-effects)



Supplemental figure 8. Forest plot of meta-analyzed associations of anti-Parkinson drugs with late AMD (model 2; FE= fixed effect)

