



# **What Matters? Using creativity to support PPI engagement: involving palliative care patients and family carers in developing research ideas and proposals**

**Dr Bella Vivat & Dr Nicola White**

**Principal Research Fellow & Research Fellow, Marie Curie Palliative Care Research Department, UCL**

**Funding:** UCLH Biomedical Research Centre PPI Bursary Fund Innovation Grant



# Aim

.....to involve participants in creative activities, to prompt thoughts on what matters at the end-of-life and for related research, including developing research proposals.

## Participants, recruitment, set-up

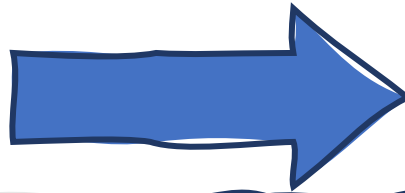
<https://www.peopleinresearch.org/>



# Method

## SESSION 1

- Discussion of images and words
- General discussion of thoughts & experiences



## Intervening week:

- Creative activity
- Optional online discussion

## SESSION 2

- Share and discuss the creative work
- Research presentation + feedback

# Participants

**4** groups; 8 2-hour sessions (2 sessions per group), October-December 2021

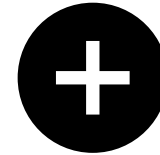
**12** participants: 2 people with cancer, 4 current carers, 2 x 3 bereaved carers

**8 women;** 7 White British      **4 men;** all from other ethnic groups

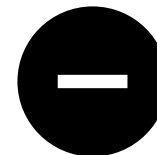
# Results: feedback

Session	Location	Timing	Content	Overall
1	3.6	4.6	4.3	4.6
2	3.7	3.9	4.1	3.9

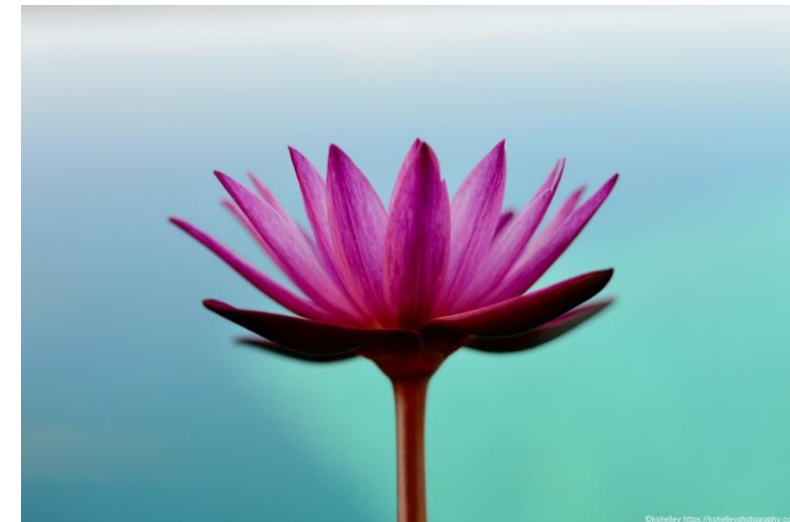
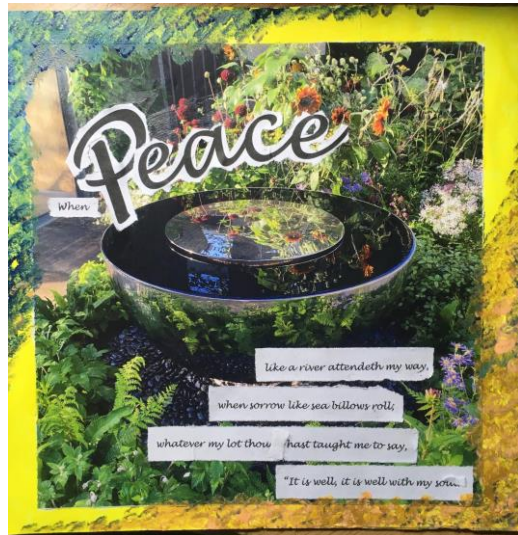
Scale: 1 (Worse than expected)  
to 5 (Better than expected)



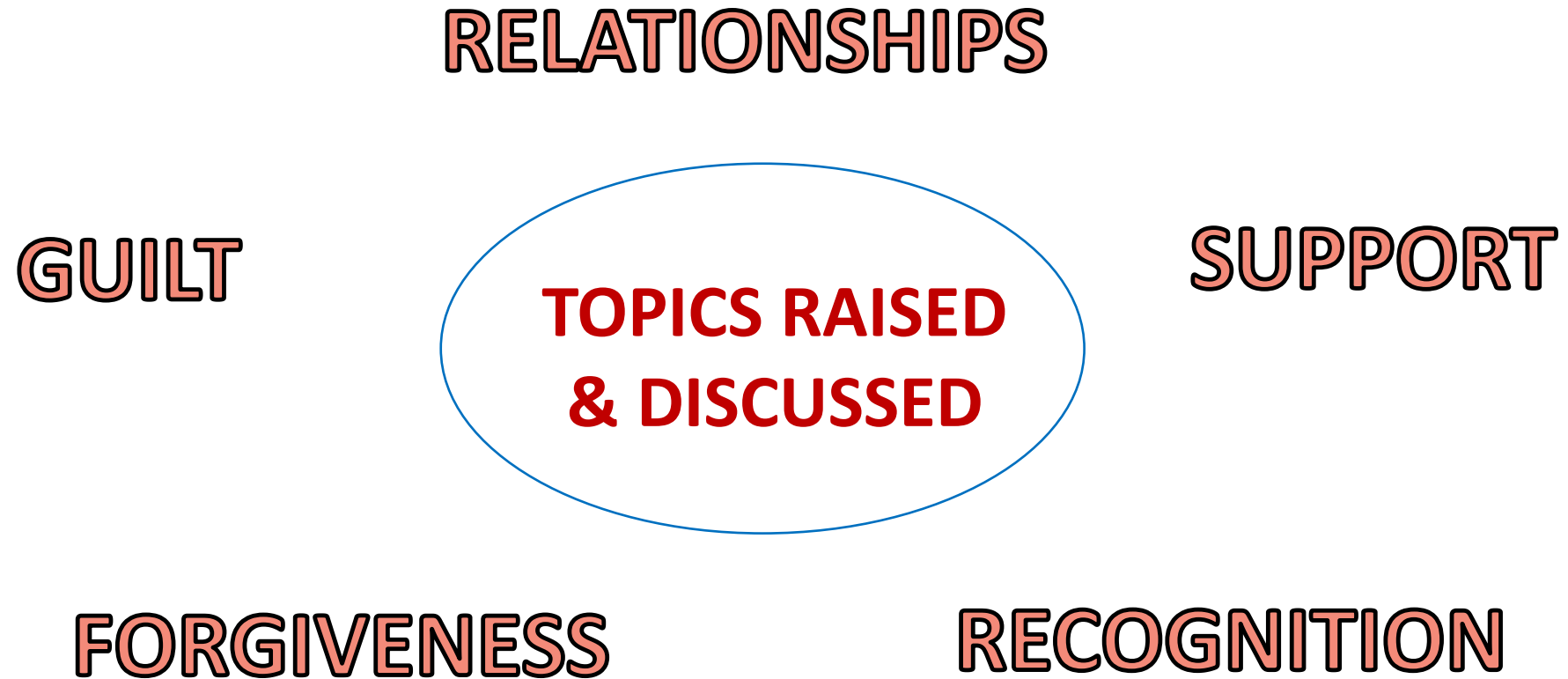
Time to talk  
Small and intimate  
Thought-provoking  
“Felt a little like very good therapy!”  
The content of the boxes  
Online is my preference



Technical issues & challenges

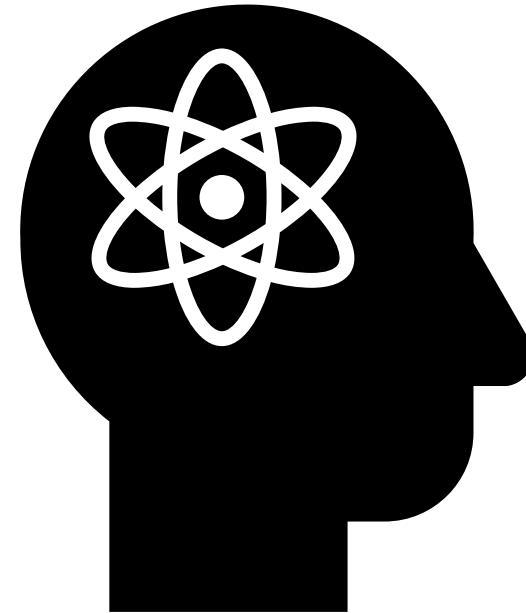
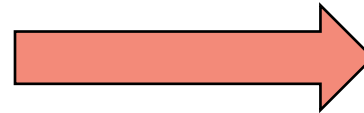
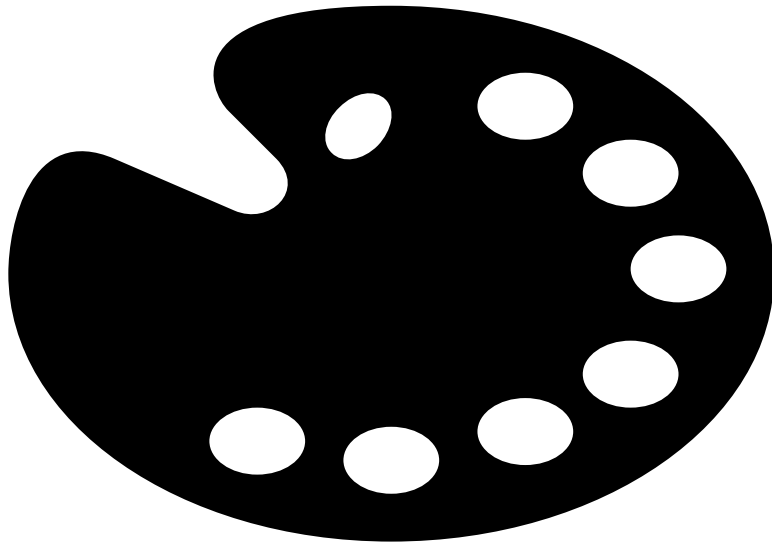


# Results





## Conclusion



# Thank you!

Thanks to all our participants, & our funders: UCLH Biomedical Research Centre for the PPI Bursary Fund Innovation Grant 2021



Dr Bella Vivat: [b.vivat@ucl.ac.uk](mailto:b.vivat@ucl.ac.uk)

Dr Nicola White: [n.g.white@ucl.ac.uk](mailto:n.g.white@ucl.ac.uk)



@MCPCRD

@bella\_vivat\_ucl

@nicolagwhite

