

Safety and efficacy of dapagliflozin in patients with focal segmental glomerulosclerosis: A prespecified analysis of the DAPA-CKD trial

David C. Wheeler¹; Niels Jongs²; Bergur V. Stefansson³; Glenn M. Chertow⁴; Tom Greene⁵; Fan Fan Hou⁶; Anna Maria Langkilde³; John J. V. McMurray⁷; Peter Rossing^{8,9}; Michal Nowicki¹⁰; István Wittmann¹¹; Ricardo Correa-Rotter¹²; C. David Sjöström³; Robert D. Toto¹³; Hiddo J.L. Heerspink² for the DAPA-CKD Trial Committees and Investigators.

1. Department of Renal Medicine, University College London, UK
2. Department Clinical Pharmacy and Pharmacology, University of Groningen, University Medical Center Groningen, Groningen, The Netherlands
3. Late-stage Development, Cardiovascular, Renal and Metabolism, Biopharmaceuticals R&D, AstraZeneca, Gothenburg, Sweden
4. Departments of Medicine and Epidemiology and Population Health, Stanford University School of Medicine, Stanford, CA, USA
5. Study Design and Biostatistics Center, University of Utah Health Sciences, Salt Lake City, UT, USA
6. Division of Nephrology, Nanfang Hospital, Southern Medical University, National Clinical Research Center for Kidney Disease, Guangzhou, China
7. Institute of Cardiovascular and Medical Sciences, University of Glasgow, Glasgow, UK
8. Steno Diabetes Center Copenhagen, Gentofte, Denmark
9. Department of Clinical Medicine, University of Copenhagen, Copenhagen, Denmark
10. Department of Nephrology, Hypertension and Kidney Transplantation, Medical University of Łódź, Łódź, Poland
11. 2nd Department of Medicine and Nephrology-Diabetes Center, University of Pécs Medical School, Pécs, Hungary

12. National Medical Science and Nutrition Institute Salvador Zubiran, Mexico City, Mexico

13. Department of Internal Medicine, UT Southwestern Medical Center, Dallas, TX, USA

Correspondence to: David C. Wheeler; E-mail: d.wheeler@ucl.ac.uk

Running head: Dapagliflozin in Focal Segmental Glomerulosclerosis

ABSTRACT

Background. Despite renin-angiotensin-aldosterone-system blockade and immunosuppressive treatment, focal segmental glomerulosclerosis (FSGS) often progresses to kidney failure. The objective of this pre-specified analysis of DAPA-CKD was to assess efficacy and safety of dapagliflozin in a small subgroup participants with FSGS confirmed by kidney biopsy.

Methods. In DAPA-CKD, patients with estimated glomerular filtration rate (eGFR) 25-75 mL/min/1.73m² and urinary albumin-to-creatinine ratio (UACR) 200-5000 mg/g (22.6-565 mg/mol) were randomised to dapagliflozin 10mg once-daily or placebo as an adjunct to standard care, and followed for median 2.4 years. The primary composite endpoint was sustained eGFR decline ≥50%, end-stage kidney disease (ESKD), or kidney or cardiovascular death. The endpoint of interest for this analysis was eGFR slope (acute effects from baseline to Week 2 and chronic effects from Week 2 to end of treatment).

Results. Of 104 participants with biopsy-confirmed FSGS, 45 were randomised to dapagliflozin and 59 to placebo. Mean (SD) age was 54.0 (14.3) years, mean eGFR 41.9 (11.5) mL/min/1.73m² and median (IQR) UACR 1248 (749-2211) mg/g. The primary outcome occurred in 4 (8.9%) and 7 (11.9%) participants randomised to dapagliflozin and placebo, respectively (HR 0.62, 95%CI 0.17-2.17). Dapagliflozin led to a larger acute reduction (SE) in eGFR compared to placebo (-4.5 [95% CI -5.9--3.1] vs -0.9 [-2.1-0.4] mL/min/1.73m² per 2 wks). Thereafter, mean rates of chronic eGFR decline with

dapagliflozin and placebo were -1.9 (-3.0 – -0.9) and -4.0 (-4.9 – -3.0) mL/min/1.73m²/year, respectively (difference 2.0 [95%CI 0.6-3.5] mL/min/1.73m²/year). Adverse events leading to study drug discontinuation were similar in both groups; there were fewer serious adverse events with dapagliflozin.

Conclusion. Among DAPA-CKD participants with FSGS, dapagliflozin reduced the rate of chronic decline of eGFR compared to placebo, although this difference was not statistically significant.

Keywords: dapagliflozin, DAPA-CKD, eGFR slope, focal segmental glomerulosclerosis

KEY LEARNING POINTS

What is already known about this subject?

Focal Segmental Glomerulosclerosis (FSGS) is a heterogeneous disease that often progresses to cause end-stage kidney disease. There have been few treatment strategies proven to slow progression of FSGS, and clinical trials in FSGS have been challenging due to the requirement for “hard” clinical outcomes to prove efficacy.

What this study adds?

In the DAPA-CKD study, 104 patients with biopsy-confirmed FSGS (eGFR 25–75 mL/min/1.73m², UACR 200–5000 mg/g) were randomised to dapagliflozin 10mg or placebo. The primary outcome occurred numerically less frequently in patients randomised to dapagliflozin versus placebo, although the total number of events were few. The rate of chronic eGFR decline (from Week 2 to end of treatment) was slower in patients with FSGS randomised to dapagliflozin compared to placebo. Adverse event rates leading to study drug discontinuation were similar between the groups.

What impact this may have on practice or policy?

Dapagliflozin offers an additional treatment option for patients with FSGS who meet the DAPA-CKD inclusion criteria.

INTRODUCTION

Focal segmental glomerulosclerosis (FSGS) is clinically characterised by proteinuria, hypertension, and progressive loss of kidney function [1]. The incidence of FSGS has been estimated at between 0.2 and 1.8 per 100,000 population per year [2]. FSGS is caused by a number of diseases and is characterised by damage to podocytes [1]. The traditional classification is into primary FSGS and adaptive (or secondary) FSGS, the latter thought to result from excess nephron workload as occurs in obesity or following a reduction in nephron number [1, 3]. This simplistic classification is becoming outdated as additional causes of FSGS including genetic mutations, viral infections and medications are recognised [4]. Treatment of FSGS depends on the aetiology and severity, with immunosuppression usually offered to patients with primary disease and supportive therapies including renin-angiotensin-aldosterone system (RAAS) blockade for those with the adaptive form [5-7]. There are no disease-specific therapies that have been approved by regulatory authorities, partly because no large-scale randomised clinical trials have demonstrated benefits on “hard outcomes” such as a reduction in the risk of end-stage kidney disease (ESKD) with any therapeutic intervention. Use of a surrogate endpoint such as change in albuminuria or an intermediate endpoint such as change in estimated glomerular filtration rate (eGFR) slope has recently been advocated as a means to enhance feasibility of clinical trials in patients with specific, and uncommon kidney diseases in whom traditional clinical endpoints rarely occur [8], and is an approach that has been adopted in ongoing trials in FSGS [9].

Dapagliflozin is a sodium-glucose cotransporter-2 (SGLT2) inhibitor that reduces glucose reabsorption in the proximal convoluted tubule of the kidney, thereby enhancing

urinary glucose excretion [10]. Developed to improve glycaemic control in patients with diabetes, the SGLT2 inhibitors empagliflozin, canagliflozin, dapagliflozin and ertugliflozin slowed the rate of decline of eGFR and reduced albuminuria in cardiovascular safety trials involving participants with type 2 diabetes [11-14]. Clinical studies in type 1 and type 2 diabetes have shown early reversible reductions in eGFR and reductions in albuminuria following initiation of SGLT2 inhibitors, even in participants with good glycaemic control [15, 16], suggesting that SGLT2 inhibitors reduce intraglomerular pressure, which may in the long-term preserve kidney function. This same effect has also been observed in non-diabetic patients with proteinuric CKD [17], providing a rationale for the use of these agents as renoprotective therapies in patients with CKD due to causes other than diabetes.

The Dapagliflozin And Prevention of Adverse outcomes in CKD trial (DAPA-CKD) demonstrated that dapagliflozin was superior to placebo in reducing the risk of major adverse kidney and cardiovascular events, as well as prolonging overall survival in a broad group of individuals with proteinuric CKD [18, 19], and in the subgroup of participants with a diagnosis of IgA nephropathy [20]. As previously reported, the DAPA-CKD study included 115 participants with a diagnosis of FSGS [21]. In this pre-specified analysis, we investigated the effects of dapagliflozin in patients with FSGS confirmed by kidney biopsy.

MATERIALS AND METHODS

Trial design and study participants

DAPA-CKD was a multicentre, double-blind, placebo-controlled, randomised trial conducted at 386 study sites in 21 countries. The trial was designed to assess the effects of dapagliflozin on kidney and cardiovascular outcomes in patients with CKD, with or without type 2 diabetes and was registered with ClinicalTrials.gov as NCT03036150. The trial was approved by Ethics Committees at each participating centre. All participants provided written informed consent before commencement of any study-specific procedure. An independent Data Monitoring Committee provided oversight. The study protocol, statistical analysis plan, and patient eligibility criteria have been previously published, as have manuscripts

describing trial design [22], baseline characteristics [21], primary results [18] and results stratified by diabetes status [19], history of cardiovascular disease [23], and IgA nephropathy diagnosis [20].

Briefly, patients were eligible if they had an eGFR between 25 and ≤ 75 mL/min/1.73m² and urinary albumin-to-creatinine ratio (UACR) between 200 and ≤ 5000 mg/g (22.6 to ≤ 565.6 mg/mmol) and were receiving a stable dose of an angiotensin converting enzyme inhibitors (ACEi) or angiotensin receptor blockers (ARB) for at least 4 weeks prior to enrolment into the trial, unless contraindicated. Exclusion criteria included patients with type 1 diabetes, those with polycystic kidney disease and those receiving immunotherapy for primary or secondary kidney disease within the previous 6 months prior to trial enrolment [22].

Baseline categorisation of cause of kidney disease

At the screening visit, investigators recorded the diagnosis of kidney disease and were asked to indicate whether this diagnosis was based on information obtained from a prior kidney biopsy. FSGS was included as a pre-specified category among participants with glomerulonephritis.

Randomisation and study procedures

As described previously [22], participants were randomly assigned to dapagliflozin 10 mg once-daily or matching placebo, in accordance with the sequestered, fixed randomisation schedule, using balanced blocks to ensure an approximate 1:1 ratio of the two regimens. Randomisation was conducted using an interactive voice- or web-based system and stratified on the diagnosis of type 2 diabetes and UACR (≤ 1000 mg/g or > 1000 mg/g). Study personnel (except the Independent Data Monitoring Committee) and participants were blinded to the treatment allocation. Drug and placebo were identically packaged, with uniform tablet appearance, labelling, and administration schedule. After randomisation, study visits occurred at 2 weeks, at 2, 4, and 8 months, and at 4-month intervals thereafter. At

each visit, we collected blood and urine samples for laboratory assessment, recorded vital signs, and gathered information on potential study endpoints, adverse events, concomitant therapies, and study drug adherence. The study was stopped early because of overwhelming efficacy following a recommendation by the Independent Data Monitoring Committee.

Outcomes

The primary outcome of the trial was a composite endpoint of sustained $\geq 50\%$ decline in eGFR (confirmed by a second serum creatinine after at least 28 days), onset of ESKD (defined as maintenance dialysis for at least 28 days, kidney transplantation, or eGFR < 15 mL/min/1.73 m² confirmed by a second measurement after at least 28 days), or death from a kidney or cardiovascular cause. Secondary outcomes included a kidney disease-specific composite outcome, which was similar to the primary outcome but excluding cardiovascular death, and all-cause mortality. An independent event adjudication committee assessed all clinical endpoints using these pre-specified endpoint definitions. Because of the relatively small number of patients with FSGS, we replaced, post-hoc, the $\geq 50\%$ eGFR decline component for $\geq 40\%$ eGFR decline in the primary outcome. A 40% eGFR decline is an accepted component of a composite kidney endpoint and occurs more frequently than 50% eGFR decline [24, 25]. For the current analysis we also examined changes in eGFR slope in the acute (baseline to Week 2), chronic (Week 2 to end of treatment) and total (baseline to end of treatment [median 2.4 years]) periods, as well as change in albuminuria.

Statistical analysis

We pre-specified analyses of the effects of dapagliflozin on the primary and secondary efficacy endpoints in participants according to the aetiology of kidney disease, with the glomerulonephritis category further sub-categorised by underlying cause, including FSGS. We included data from all randomised patients according to the intention-to-treat principle, but focused this analysis on those with biopsy-proven FSGS. Study data in tables

and text are presented as mean \pm standard deviation (SD) or \pm standard error (SE) for slope data, or as median with 25th to 75th percentile range.

For event-driven analyses (which we anticipated would be underpowered), we fitted Cox proportional hazards regression models, stratified by type 2 diabetes and UACR (≤ 1000 and > 1000) and adjusted for baseline eGFR to estimate the hazard ratio (HR) and 95% confidence intervals (CI; dapagliflozin versus placebo) for the primary composite endpoint, secondary endpoints, and pre-specified exploratory endpoints.

The effect of dapagliflozin on the mean on-treatment eGFR slope was analysed by fitting a two-slope mixed effects linear spline model (with a knot at Week 2) to eGFR values, with random intercept and random slopes for treatment. The variance-covariance matrix was assumed to be unstructured, i.e. purely data-dependent. The mean total slope was computed as a weighted combination of the acute and chronic slopes to reflect the mean rate of eGFR change to last on-treatment visit. We also visually presented the pattern of change in mean eGFR using a restricted maximum likelihood repeated measures approach. This analysis included the fixed effects of treatment, visit and the treatment-by-visit interaction, with visit treated as a categorical factor, as well as the continuous, fixed covariates of baseline eGFR and baseline eGFR-by-visit interaction. We conducted sensitivity analyses for all participants with FSGS as reported by the investigator, with or without a recorded confirmatory kidney biopsy.

A two-slope random effects model was used to assess the association between albuminuria at 14 days after randomisation and longer-term effects of dapagliflozin on the chronic eGFR slope (Week 2 to end of treatment). This model included fixed effects for baseline eGFR, log-transformed UACR, change in UACR (at Day 14), type 2 diabetes status, treatment, age, sex, race, systolic blood pressure, HbA1c, haemoglobin, smoking status and cardiovascular disease history. The model also included a term for continuous time, a linear time-spline term combined with a three-way interaction between time-spline, treatment and change in UACR at Day 14. We used restricted maximum likelihood (REML)

for estimation of statistical inference. The intercept and time were included as random effects and modeled using an unstructured variance-covariance matrix.

We performed all analyses using SAS version 9.4 (SAS Institute) or R version 4.0.2 (R-Foundation).

RESULTS

The trial included 115 participants with FSGS reported as the cause of kidney disease by the investigator, of whom 104 (90%) had undergone a kidney biopsy to substantiate this diagnosis. Of these 104 participants, 45 were randomised to dapagliflozin and 59 to placebo. Overall, the mean age was 54.0 years, 67.3% were male, 28.8% were Asian, and 19.2% had type 2 diabetes. Mean eGFR (SD) was 41.9 (11.5) mL/min/1.73m² and median UACR (25th–75th percentile range) was 1248 mg/g (749–2211). Participants assigned to dapagliflozin or placebo had largely similar baseline characteristics, although there were some notable differences in the proportion with type 2 diabetes, and in the racial distribution (**Table 1**).

Effects of dapagliflozin on the primary composite and other endpoints

The primary composite endpoint occurred in 4 (8.9%) participants with FSGS in the dapagliflozin group and 7 (11.9%) participants with FSGS in the placebo group (HR 0.62 [95% CI 0.17, 2.17]) (**Figure 1**). This finding was consistent with the overall DAPA-CKD population, and the broad population with glomerulonephritis. All but one primary composite endpoint event occurred in patients with a baseline UACR >1000 mg/g. The effect of dapagliflozin among all participants with FSGS was consistent with the overall analyses (HR 0.45 [95% CI 0.13, 1.49]; **Figure 1**). The secondary kidney-disease specific composite endpoint occurred in 4 (8.9%) participants in the dapagliflozin group and 6 (10.2%) participants in the placebo group (HR 0.67 [95% CI 0.19, 2.44]). The post-hoc composite outcome of a sustained ≥40% eGFR decline, ESKD or death from a kidney or cardiovascular

cause occurred in 6 (13.3%) participants in the dapagliflozin group and 11 (18.6%) participants in the placebo group (HR 0.60 [95% CI 0.22, 1.65]). Few patients reached ESKD during follow-up: 2 (4.4%) in the dapagliflozin group and 3 (5.1%) in the placebo group. During follow-up 2 (3.4%) patients died in the placebo group and none in the dapagliflozin group.

Effects of dapagliflozin on continuous outcomes

Between baseline and Week 2, and as expected, patients with FSGS randomised to dapagliflozin experienced a larger acute reduction in eGFR compared to placebo (-4.5 [95% CI $-5.9, -3.1$] vs -0.9 [95% CI $-2.1, 0.4$] mL/min/1.73m² per 2 weeks). Thereafter (chronic slope; Week 2 to end of treatment) the mean annual rates of eGFR decline with dapagliflozin and placebo were -1.9 (95% CI $-3.0, -0.9$) and -4.0 (95% CI $-4.9, -3.0$) mL/min/1.73m² per year, respectively (difference 2.4 [95% CI $0.6, 3.5$] mL/min/1.73m² per year). The total slope, which combines the acute effect and chronic slope (baseline to end of treatment), was -3.7 (95% CI $-4.8, -2.6$) vs -4.2 (95% CI $-5.2, -3.3$) mL/min/1.73m² per year in the dapagliflozin and placebo group respectively (difference 0.5 [95% CI $-0.9, 2.0$] mL/min/1.73m² per year; **Figure 2**) (**Supplemental Figure 1**).

At baseline, median UACR (25th–75th percentile range) in the dapagliflozin and placebo groups was 997 (736–2290) mg/g and 1410 (769–2170) mg/g, respectively. At Week 2, the geometric mean change from baseline in UACR was -26.1% (95% CI $-35.2, -15.6$) in the dapagliflozin group and -9.9% (95% CI $-19.8, 1.1$) in the placebo group, corresponding to a between-group difference of 19.7% (SE 9.0). This reduction in UACR persisted through to Month 12, although after 12 months UACR levels were similar between the two groups (**Supplementary Figure 2**).

Association between early UACR changes and chronic eGFR slope

We observed a log-linear relationship between the early change in UACR at Week 2 and subsequent eGFR decline (chronic slope) with dapagliflozin treatment, such that each

10% reduction in UACR was associated with a subsequent average -0.67 (95% CI -0.93 , -0.42) mL/min/1.73m² per year lesser decline in eGFR (**Figure 3**) (**Supplemental Figure 3**).

Effects of dapagliflozin on blood pressure

At baseline, mean systolic and diastolic blood pressure in the dapagliflozin and placebo groups were 127.0 and 129.0 mmHg, and 75.7 and 76.1 mmHg respectively. During follow-up, there were no differences in blood pressure between treatment groups (**Supplemental Figure 4**).

Safety

Overall, adverse events leading to discontinuation of study drug were similar in the dapagliflozin and placebo groups. There were fewer serious adverse events with dapagliflozin versus placebo (**Table 2**). None of the participants developed major hypoglycaemia. There were no cases of diabetic ketoacidosis.

DISCUSSION

The effect of dapagliflozin 10 mg, compared with placebo, was assessed in the DAPA-CKD trial in patients with CKD of various aetiologies, all of whom exhibited at least a modest degree of albuminuria, with nearly all on RAAS inhibitors. Investigator reported-causes of CKD were collected at the time of participant enrolment. After diabetic nephropathy (n=2510), ischaemic/hypertensive nephropathy (n=687) and IgA nephropathy (n=270), FSGS (n=115) comprised the fourth largest group with a single specific kidney disease [19, 21]. The diagnosis of FSGS was based on a kidney biopsy in 90% of the participants. In this pre-specified analysis, we demonstrated that, among participants with biopsy-confirmed FSGS, dapagliflozin reduced the risk of the primary composite endpoint by 17% (95% CI 0.22, 3.12). Although the treatment effect did not approach statistical significance within the FSGS subgroup, the estimated effect was similar between FSGS

patients and the full DAPA-CKD study population. Understanding that this analysis was limited by the small number of clinical events, we also examined eGFR slopes as an intermediate outcome (a surrogate for large decrements in kidney function or incidence of kidney failure) and demonstrated an attenuated chronic decline in eGFR among patients randomised to dapagliflozin (after the initial eGFR reduction at 2 weeks) of 2.0 mL/min/1.73m² per year (with an overall slope difference of 0.5 mL/min/1.73m² per year over the whole treatment period [median 2.4 years]). The concordance between the significant change in rate of chronic eGFR decline and the trend to a reduction in kidney outcomes supports the use of eGFR slopes in clinical trials involving patients with FSGS in whom major adverse kidney events are rare [8].

Conducting clinical trials in FSGS has been challenging for multiple reasons including difficulties in recruiting sufficient patients. For example, the FONT (Novel Therapies for Resistant FSGS) Phase II clinical trial (NCT00814255, Registration date December 22, 2008) was designed to assess the efficacy of adalimumab and galactose compared to standard medical therapy, but recruited just 21 patients. A US National Institute of Health sponsored trial comparing cyclosporine to steroids and mycophenolate mofetil took 5 years to complete and included only 138 participants [26]. There is therefore a need for validated surrogate endpoints that allow efficacy assessment of established and new therapies, an approach that may appeal to regulators as well as to investigators and patients. A recent workshop supported by the US National Kidney Foundation concluded that changes in albuminuria and eGFR slope fulfill criteria for surrogacy for use as endpoints in clinical trials of chronic kidney disease but that implementation required better understanding of conditions under which each surrogate likely to perform well and to restrict use to those settings [8]. Our data support the use of eGFR slopes as a surrogate marker in patients with a diagnosis of FSGS.

Remission of proteinuria has been used in past and ongoing clinical trials in patients with FSGS as a surrogate endpoint. Our data demonstrating that larger reductions in albuminuria correlate with less marked eGFR decline during subsequent follow-up support a

potential role for albuminuria as a surrogate endpoint in future trials in patients with FSGS. These findings are in accord with a recent analysis from the FONT trial demonstrating that a 1-log unit reduction in UACR over 26 weeks was associated with an increase in eGFR of 3.9 mL/min/1.73m² per year [27]. Traditionally remission in proteinuria (e.g. to urine protein-creatinine ratio <0.3 g/g) has also previously been used as an endpoint in trials in patients with FSGS [28]. Our data demonstrating a log-linear relationship between albuminuria change and eGFR support using albuminuria as a continuous measure without a requirement to achieve a minimal absolute threshold. A 25% reduction in albuminuria has been shown to provide high confidence that the intervention will infer clinical benefit [29]. The loss of any difference in UACR levels after 12 months in our analysis is likely to reflect the diminishing number of patients with FSGS who had data available for analysis as the trial progressed. Another important finding from our analysis was that all but one participant with a baseline UACR >1000 mg/g reached a clinical endpoint during the study, suggesting that these patients might be more informative in trials assessing progression to ESKD.

The ongoing EMPA-KIDNEY study (NCT03594110) assessing empagliflozin in patients with CKD, with and without diabetes, has enrolled approximately 6,600 participants. We anticipate that this trial has recruited patients with FSGS and may further contribute to our understanding of the treatment effect of SGLT2 inhibitors in this heterogeneous disease.

Recently updated international guidelines suggest using ACEi/ARBs as first-line supportive therapy in patients with glomerular disease, hypertension and proteinuria (>1 g/day) with up-titration depending on blood pressure [30]. Other general measures include lifestyle modifications, dietary sodium restriction and lipid management [30]. The guidelines also suggest a test-course of immunosuppressive therapy in patients with primary FSGS, starting with corticosteroids followed by calcineurin inhibitors for those who fail to achieve remission [30]. The guidelines recommend against using immunosuppression in those patients with FSGS of undetermined cause or secondary FSGS, leaving only supportive treatment options available. Given a lack of effective interventions, clinicians and patients

are likely to welcome SGLT2 inhibitors as a new therapeutic approach that can be used as an adjunct to ACEi/ARB treatment.

Our findings in the FSGS subgroup of DAPA-CKD are consistent with findings from other smaller, mechanistic trials of SGLT2 inhibitors in patients without diabetes that suggest that dapagliflozin reduces intraglomerular pressure. In a cross-over study including 53 patients with proteinuric CKD without diabetes of whom 11 (21%) had FSGS, dapagliflozin 10 mg led to an acute but reversible reduction in measured GFR, reduced body weight and increased haematocrit, suggesting enhanced glycosuria and natriuresis [31]. These physiological changes are believed to preserve long-term kidney function in patients with and without type 2 diabetes, as was observed in the current study and was observed in those enrolled in DAPA-CKD with a diagnosis of IgA nephropathy [20]. While the mechanisms for kidney function preservation by SGLT2 inhibitors are not fully understood, other proposed pathways include suppression of inflammation and fibrosis, possibly through RAAS inhibition, and reduction in ischaemia in the kidney [32, 33].

Our findings have clinical implications for the management of patients with FSGS who share the clinical characteristics of the trial participants and who are already on RAAS blocking therapy. DAPA-CKD is the first event-driven trial of an SGLT2 inhibitor to include patients with CKD due to a range of underlying aetiologies, including patients with FSGS, and to demonstrate a beneficial effect on major adverse kidney events. Although, probably given our small sample size, we were unable to demonstrate a significant difference in the risk of the trial's primary composite endpoint, the attenuated decline of eGFR in patients randomised to dapagliflozin is likely to translate into improvements in "clinically-meaningful" outcomes in a larger population over a longer treatment period. For example, if the annual rate of decline in eGFR were reduced from 4 to 2 mL/min/1.73m² per year (slightly less than the benefit experienced by DAPA-CKD participants with FSGS), a patient at a starting eGFR of 43 mL/min/1.73m² (the mean eGFR of DAPA-CKD participants) would experience a roughly 8-year delay before reaching an eGFR of 10 mL/min/1.73m², a point at which many patients would require dialysis or kidney transplantation.

Dapagliflozin was well tolerated in the FSGS subpopulation, confirming its established safety profile. Clinicians will be reassured by the fact that there were no cases of diabetic ketoacidosis or hypoglycaemia in participants with FSGS receiving dapagliflozin.

With respect to limitations, the DAPA-CKD study was not specifically designed to test our hypothesis in patients with FSGS, and the relatively small sample size of this subgroup limited the precision of estimates of treatment effects on the study endpoints. However, the analysis presented herein was included in the original study design, without knowing *a priori* how many participants with FSGS would ultimately be enrolled. As a secondary analysis of the DAPA-CKD study, the participants in this analysis were not randomised into the treatment groups, which resulted in imbalances in characteristics between the groups; these imbalances should be considered when interpreting the results in this subgroup. A further point to note is that 10% of participants reported to have FSGS had not, according to the relevant investigator, undergone a kidney biopsy. The diagnosis of FSGS in these participants was likely to be based on the clinical acumen of the investigator and it is possible that some or all had another glomerular or kidney disease. Including these 11 patients did not alter our conclusions. We did not ask clinicians to subclassify FSGS according to the likely underlying aetiology, so we do not know the proportion of patients with primary versus secondary disease; while the exclusion criteria in the DAPA-CKD study, such as previous use of immunosuppression within 6 months prior to enrolment, may mean that the majority of the FSGS patients have secondary disease, we are unable to provide further information as these specific data were not collected. Finally, we did not investigate the effects of dapagliflozin in patients with FSGS who had normal or near normal kidney function, or those with eGFR below 25 mL/min/1.73m². It should be noted that participants were not required to stop study drug based on any eGFR threshold.

In conclusion, this pre-specified analysis of the DAPA-CKD study demonstrated that, when added to ACEi/ARB therapy, dapagliflozin reduced the rate of chronic eGFR decline over a median of 2.4 years treatment in patients with FSGS, in concordance with fewer primary endpoint events versus placebo, and had a favourable safety profile.

AUTHORS' CONTRIBUTIONS

DCW was involved in the study design, conduct of the study, data collection and interpretation, and wrote the first draft of the manuscript.

HJLH was involved in the study design, data collection, conduct of the study, data analysis and interpretation and critical revision of all drafts of the manuscript.

RDT, GMC, JJVMcM, TG, FFH, PR and RC-R are members of the executive committee of the DAPA-CKD study and were involved in the study design and data collection, analysis and interpretation.

MN and IW were investigators for the study and were involved in data collection and interpretation.

NJ performed the data analyses.

AML, CDS and BVS were involved in the study design, conduct of the study, data collection and interpretation.

DCW and HJLH had full access to all data and had the final responsibility to submit for publication.

All authors reviewed the manuscript drafts, provided approval of the final version for submission, and take responsibility for the accuracy and integrity of the data.

ACKNOWLEDGEMENTS

The authors thank all investigators, trial teams, and patients for their participation in the trial.

The authors would also like to acknowledge Nicola Truss, inScience Communications, London, UK, for assistance in editing and preparation of figures. This support was funded by AstraZeneca.

CONFLICT OF INTEREST STATEMENT

DCW provides ongoing consultancy services to AstraZeneca and has received honoraria and/or consultancy fees from Amgen, AstraZeneca, Boehringer Ingelheim, Bayer,

GlaxoSmithKline, Janssen, Napp, Mundipharma, Medscape, Merck Sharp and Dohme, Pharmacosmos, Reata, Takeda, Tricida, Vifor Fresenius and Zydus.

NJ has nothing to declare.

BVS, CDS, and AML are employees and stockholders of AstraZeneca.

GMC has received fees from AstraZeneca for the DAPA-CKD trial steering committee, research grants from NIDDK, and Amgen; he is on the board of directors for Satellite Healthcare, has received fees for advisory boards for Baxter, Cricket, DiaMedica, and Reata; and holds stock options for Ardelyx, CloudCath, Durect, DxNow, and Outset; has received fees from Akebia, Sanifit and Vertex for Trial steering committees; and has received fees for DSMB service from Angion, Bayer and ReCor.

TG has received grants for statistical consulting from AstraZeneca, CSL and Boehringer-Ingelheim; has received personal fees from Janssen Pharmaceuticals, DURECT Corporation and Pfizer for statistical consulting.

FFH has received honoraria from AbbVie and AstraZeneca.

JJVMcM Payments to his employer, Glasgow University, for his work on clinical trials, consulting and other activities: Alnylam, Amgen, AstraZeneca, Bayer, BMS, Cardurion, Cytokinetics, GSK, Novartis, Pfizer, Theracos. Personal lecture fees: the Corpus, Abbott, Hickma, Sun Pharmaceuticals, Medsca.

PR has received honoraria to Steno Diabetes Center Copenhagen for consultancy from AstraZeneca, Astellas, Bayer, Boehringer Ingelheim, Gilead, Novo Nordisk, Merck, Mundipharma, Sanofi, Vifor, and research support from Astra Zeneca and Novo Nordisk.

MN has received honoraria from Boehringer Ingelheim, Swixx Biopharma, Roche, Sanofi Genzyme and Omeros.

IW has received honoraria from AstraZeneca, Boehringer Ingelheim, Novo Nordisk, Eli Lilly, Merck Sharp & Dohme and Sanofi.

RC-R has received honoraria from AbbVie, AstraZeneca, GlaxoSmithKline, Medtronic, and Boehringer Ingelheim, and has lectured for Amgen, Janssen, Takeda, AstraZeneca, and

Boehringer Ingelheim and has received research support from GlaxoSmithKline, Novo Nordisk and AstraZeneca.

RDT is a consultant for AstraZeneca, Amgen, Bayer, Boehringer-Ingelheim, Medscape, Otsuka, Reata and Relypsa.

HJLH is a consultant for AbbVie, AstraZeneca, Bayer, Boehringer Ingelheim, Chinook, CSL Pharma, Gilead, Janssen, Merck, Mundi Pharma, Mitsubishi Tanabe, Novo Nordisk, and Retrophin. He received research support from Abbvie, AstraZeneca, Boehringer Ingelheim and Janssen.

FUNDING

The DAPA-CKD study was funded by AstraZeneca.

DATA AVAILABILITY STATEMENT

Data underlying the findings described in this manuscript may be obtained in accordance with AstraZeneca's data sharing policy described at <https://astrazenecagrouptrials.pharmacm.com/ST/Submission/Disclosure>.

REFERENCES

1. Rosenberg AZ, Kopp JB. Focal Segmental Glomerulosclerosis. *Clin J Am Soc Nephrol* 2017;12(3):502-517
2. McGrogan A, Franssen CF, de Vries CS. The incidence of primary glomerulonephritis worldwide: a systematic review of the literature. *Nephrol Dial Transplant* 2011;26(2):414-430
3. Barisoni L, Schnaper HW, Kopp JB. A Proposed Taxonomy for the Podocytopathies: A Reassessment of the Primary Nephrotic Diseases. *Clinical Journal of the American Society of Nephrology* 2007;2(3):529-542
4. D'Agati VD, Kaskel FJ, Falk RJ. Focal segmental glomerulosclerosis. *N Engl J Med* 2011;365(25):2398-2411
5. Rovin BH, Caster DJ, Cattran DC, *et al.* Management and treatment of glomerular diseases (part 2): conclusions from a Kidney Disease: Improving Global Outcomes (KDIGO) Controversies Conference. *Kidney Int* 2019;95(2):281-295
6. Liu Y, Shi Y, Ren R, *et al.* Advanced therapeutics in focal and segmental glomerulosclerosis. *Nephrology (Carlton)* 2018;23 Suppl 4:57-61
7. KDIGO Working Group. KDIGO Clinical Practice Guideline for Glomerulonephritis. *Kidney International Supplement* 2012;2:139-274

8. Levey AS, Gansevoort RT, Coresh J, *et al.* Change in Albuminuria and GFR as End Points for Clinical Trials in Early Stages of CKD: A Scientific Workshop Sponsored by the National Kidney Foundation in Collaboration With the US Food and Drug Administration and European Medicines Agency. *Am J Kidney Dis* 2020;75(1):84-104
9. Komers R, Diva U, Inrig JK, *et al.* Study Design of the Phase 3 Sparsentan Versus Irbesartan (DUPLEX) Study in Patients With Focal Segmental Glomerulosclerosis. *Kidney International Reports* 2020;5(4):494-502
10. Vallon V. The mechanisms and therapeutic potential of SGLT2 inhibitors in diabetes mellitus. *Annu Rev Med* 2015;66:255-270
11. Wanner C, Inzucchi SE, Lachin JM, *et al.* Empagliflozin and Progression of Kidney Disease in Type 2 Diabetes. *N Engl J Med* 2016;375(4):323-334
12. Neal B, Perkovic V, Mahaffey KW, *et al.* Canagliflozin and Cardiovascular and Renal Events in Type 2 Diabetes. *N Engl J Med* 2017;377(7):644-657
13. Mosenzon O, Wiviott SD, Cahn A, *et al.* Effects of dapagliflozin on development and progression of kidney disease in patients with type 2 diabetes: an analysis from the DECLARE-TIMI 58 randomised trial. *Lancet Diabetes Endocrinol* 2019;7(8):606-617
14. Cherney DZI, Charbonnel B, Cosentino F, *et al.* Effects of ertugliflozin on kidney composite outcomes, renal function and albuminuria in patients with type 2 diabetes mellitus: an analysis from the randomised VERTIS CV trial. *Diabetologia* 2021;64(6):1256-1267
15. Cherney DZ, Perkins BA, Soleymanlou N, *et al.* Renal hemodynamic effect of sodium-glucose cotransporter 2 inhibition in patients with type 1 diabetes mellitus. *Circulation* 2014;129(5):587-597
16. Pollock C, Stefánsson B, Reyner D, *et al.* Albuminuria-lowering effect of dapagliflozin alone and in combination with saxagliptin and effect of dapagliflozin and saxagliptin on glycaemic control in patients with type 2 diabetes and chronic kidney disease (DELIGHT): a randomised, double-blind, placebo-controlled trial. *Lancet Diabetes Endocrinol* 2019;7(6):429-441
17. Heerspink HJ, Perkins BA, Fitchett DH, *et al.* Sodium Glucose Cotransporter 2 Inhibitors in the Treatment of Diabetes Mellitus: Cardiovascular and Kidney Effects, Potential Mechanisms, and Clinical Applications. *Circulation* 2016;134(10):752-772
18. Heerspink HJL, Stefansson BV, Correa-Rotter R, *et al.* Dapagliflozin in Patients with Chronic Kidney Disease. *N Engl J Med* 2020;383(15):1436-1446
19. Wheeler DC, Stefansson BV, Jongs N, *et al.* Effects of dapagliflozin on major adverse kidney and cardiovascular events in patients with diabetic and non-diabetic chronic kidney disease: a prespecified analysis from the DAPA-CKD trial. *Lancet Diabetes Endocrinol* 2021;9(1):22-31
20. Wheeler DC, Toto RD, Stefansson BV, *et al.* A pre-specified analysis of the DAPA-CKD trial demonstrates the effects of dapagliflozin on major adverse kidney events in patients with IgA nephropathy. *Kidney Int* 2021;10.1016/j.kint.2021.03.033
21. Wheeler DC, Stefansson BV, Batiushin M, *et al.* The dapagliflozin and prevention of adverse outcomes in chronic kidney disease (DAPA-CKD) trial: baseline characteristics. *Nephrol Dial Transplant* 2020;35(10):1700-1711
22. Heerspink HJL, Stefansson BV, Chertow GM, *et al.* Rationale and protocol of the Dapagliflozin And Prevention of Adverse outcomes in Chronic Kidney Disease (DAPA-CKD) randomized controlled trial. *Nephrol Dial Transplant* 2020;35(2):274-282
23. McMurray JJV, Wheeler DC, Stefansson BV, *et al.* Effect of Dapagliflozin on Clinical Outcomes in Patients With Chronic Kidney Disease, With and Without Cardiovascular Disease. *Circulation* 2021;143(5):438-448
24. Lambers Heerspink HJ, Weldegiorgis M, Inker LA, *et al.* Estimated GFR Decline as a Surrogate End Point for Kidney Failure: A Post Hoc Analysis From the Reduction of End Points in Non-Insulin-Dependent Diabetes With the Angiotensin II Antagonist Losartan (RENAAL) Study and Irbesartan Diabetic Nephropathy Trial (IDNT). *American Journal of Kidney Diseases* 2014;63(2):244-250

25. Inker LA, Levey AS, Pandya K, *et al.* Early Change in Proteinuria as a Surrogate End Point for Kidney Disease Progression: An Individual Patient Meta-analysis. *American Journal of Kidney Diseases* 2014;64(1):74-85
26. Gipson DS, Trachtman H, Kaskel FJ, *et al.* Clinical trial of focal segmental glomerulosclerosis in children and young adults. *Kidney Int* 2011;80(8):868-878
27. Troost JP, Trachtman H, Spino C, *et al.* Proteinuria Reduction and Kidney Survival in Focal Segmental Glomerulosclerosis. *Am J Kidney Dis* 2021;77(2):216-225
28. Troost JP, Trachtman H, Nachman PH, *et al.* An Outcomes-Based Definition of Proteinuria Remission in Focal Segmental Glomerulosclerosis. *Clin J Am Soc Nephrol* 2018;13(3):414-421
29. Heerspink HJL. Predicting individual treatment response in diabetes. *Lancet Diabetes Endocrinol* 2019;7(6):415-417
30. Kidney Disease: Improving Global Outcomes (KDIGO) Glomerular Disease Work Group. KDIGO 2021 Clinical Practice Guideline for the Management of Glomerular Diseases. *Kidney Int* 2021;In Press
31. Cherney DZI, Dekkers CCJ, Barbour SJ, *et al.* Effects of the SGLT2 inhibitor dapagliflozin on proteinuria in non-diabetic patients with chronic kidney disease (DIAMOND): a randomised, double-blind, crossover trial. *Lancet Diabetes Endocrinol* 2020;8(7):582-593
32. Woods TC, Satou R, Miyata K, *et al.* Canagliflozin Prevents Intrarenal Angiotensinogen Augmentation and Mitigates Kidney Injury and Hypertension in Mouse Model of Type 2 Diabetes Mellitus. *Am J Nephrol* 2019;49(4):331-342
33. Packer M. Mechanisms Leading to Differential Hypoxia-Inducible Factor Signaling in the Diabetic Kidney: Modulation by SGLT2 Inhibitors and Hypoxia Mimetics. *Am J Kidney Dis* 2021;77(2):280-286

ORIGINAL UNEDITED MANUSCRIPT

Table 1. Baseline characteristics in patients enrolled in DAPA-CKD with focal segmental glomerulosclerosis

Characteristic	Dapagliflozin (N=45)	Placebo (N=59)	Total (N=104)
Age (years)	52.2 (14.2)	55.4 (14.3)	54.0 (14.3)
Sex, female, n (%)	13 (28.9)	21 (35.6)	34 (32.7)
Race, n (%)			
Asian	8 (17.8)	22 (37.3)	30 (28.8)
Black or African American	5 (11.1)	2 (3.4)	7 (6.7)
White	28 (62.2)	30 (50.8)	58 (55.8)
Other	4 (8.9)	5 (8.5)	9 (8.7)
Weight (kg)	89.9 (18.2)	81.7 (20.4)	85.3 (19.8)
BMI (kg/m ²)	30.7 (6.5)	28.7 (5.8)	29.6 (6.1)
Blood Pressure (mm Hg)			
Systolic	127.0 (15.2)	129.0 (14.7)	128.2 (14.9)
Diastolic	75.7 (9.8)	76.1 (9.0)	75.9 (9.3)
HbA1c, %	5.7 (0.5)	6.0 (1.1)	5.9 (0.9)
eGFR (mL/min/1.73m ²)	40.3 (10.6)	43.2 (12.1)	41.9 (11.5)
Haemoglobin (g/L)	129.9 (16.1)	133.3 (16.9)	131.8 (16.6)
Serum potassium (mEq/L)	4.6 (0.5)	4.6 (0.4)	4.6 (0.5)
Median UACR (IQR)	997 (736–2290)	1410 (769–2170)	1247 (749–2211)
Type 2 diabetes, n (%)	5 (11.1)	15 (25.4)	20 (19.2)
Heart failure, n (%)	2 (4.4)	0 (0)	2 (1.9)

Prior Medication, n (%)

ACE inhibitor	17 (37.8)	21 (35.6)	38 (36.5)
ARB	28 (62.2)	36 (61.0)	64 (61.5)
Diuretic	19 (42.2)	16 (27.1)	35 (33.7)
Statin	28 (62.2)	45 (76.3)	73 (70.2)

Data are mean (SD) unless otherwise stated.

ACE, angiotensin-converting enzyme; ARB, angiotensin receptor blocker; BMI, body mass index; FSGS, focal segmental glomerulosclerosis; GFR, glomerular filtration rate; UACR, urinary albumin-to-creatinine ratio

ORIGINAL UNEDITED MANUSCRIPT

Table 2. Safety outcomes in patients with focal segmental glomerulosclerosis

n (%)	Dapagliflozin (N=45)	Placebo (N=58)
Adverse event leading to study drug discontinuation	3 (6.7)	3 (5.2)
Any serious adverse event ^a	9 (20.0)	16 (27.6)

^aIncludes death

ORIGINAL UNEDITED MANUSCRIPT

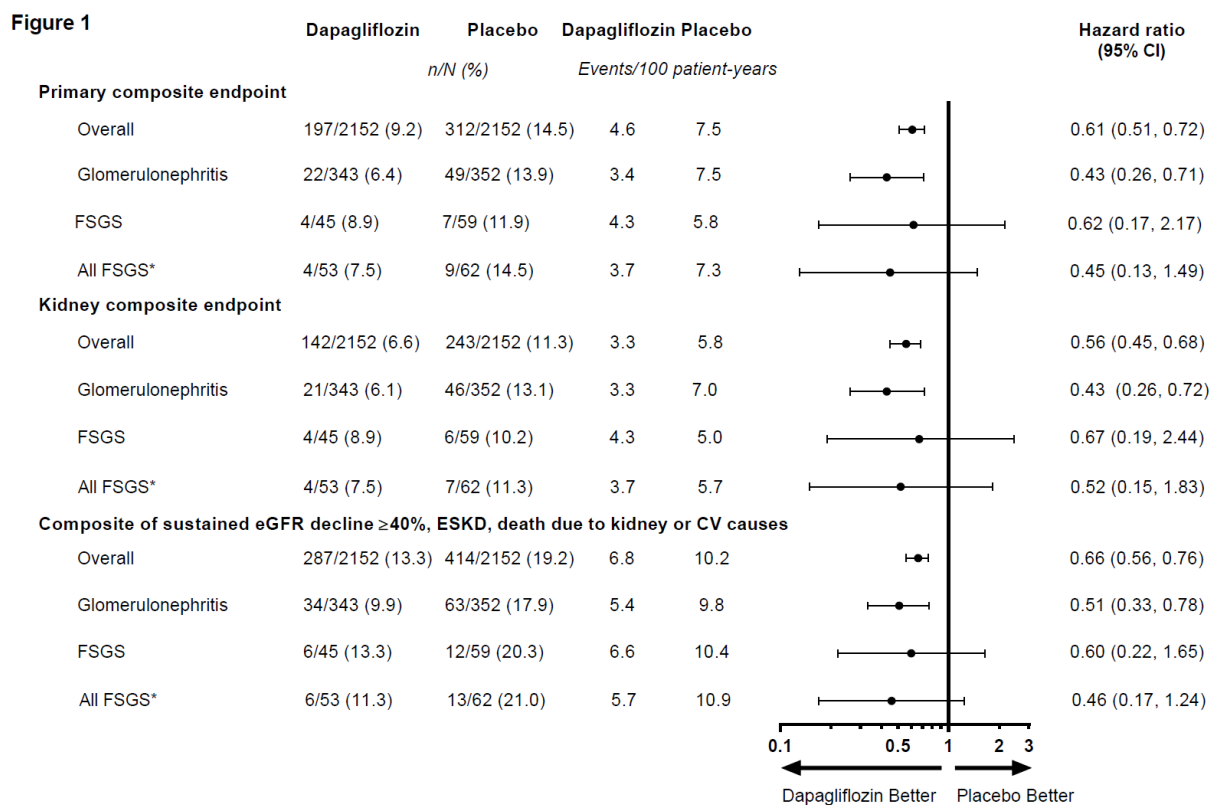


Figure 1. Forest plot for the primary composite endpoint, kidney-disease specific composite endpoint, and a *post-hoc* exploratory composite endpoint of $\geq 40\%$ eGFR decline, onset of end-stage kidney disease or death from kidney or cardiovascular causes in the overall DAPA-CKD population, and in patients with glomerulonephritis, and those with focal segmental glomerulosclerosis

*Includes those with biopsy-confirmed FSGS (n=104) and those classed as FSGS but without biopsy confirmation (n=11).

ORIGINAL UNEDITED

Primary composite outcome, sustained $\geq 50\%$ decline in eGFR, onset of ESKD, or death from a kidney or cardiovascular cause; kidney-specific composite outcome, sustained $\geq 50\%$ decline in eGFR, onset of ESKD, or death from a kidney cause

eGFR, estimated glomerular filtration rate; ESKD, end-stage kidney disease; FSGS, focal segmental glomerulosclerosis

ORIGINAL UNEDITED MANUSCRIPT

Figure 2

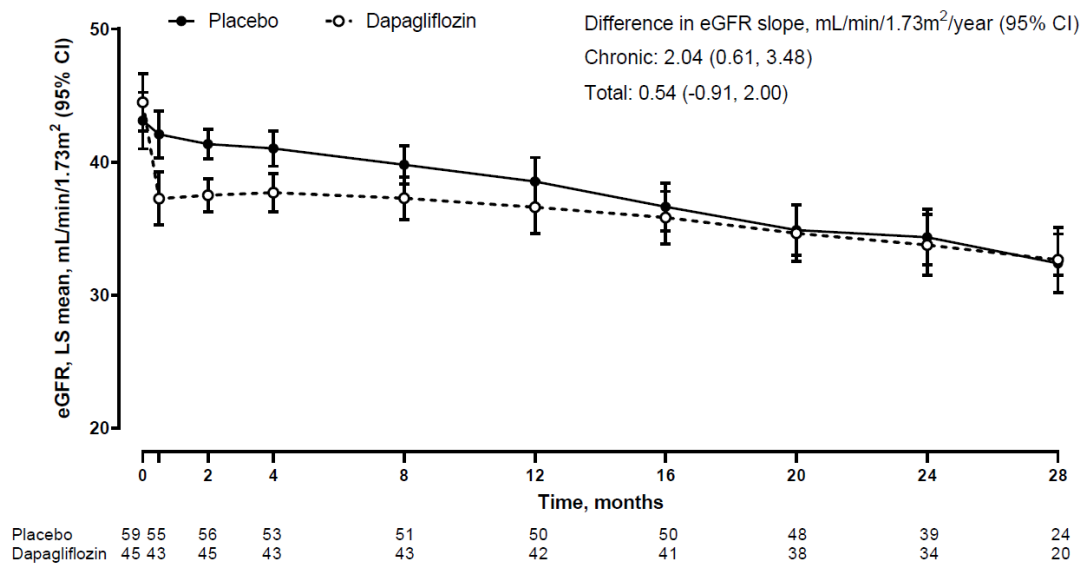


Figure 2. eGFR trajectory over time in patients with focal segmental glomerulosclerosis

eGFR, estimated glomerular filtration rate

ORIGINAL UNEDITED MANUSCRIPT

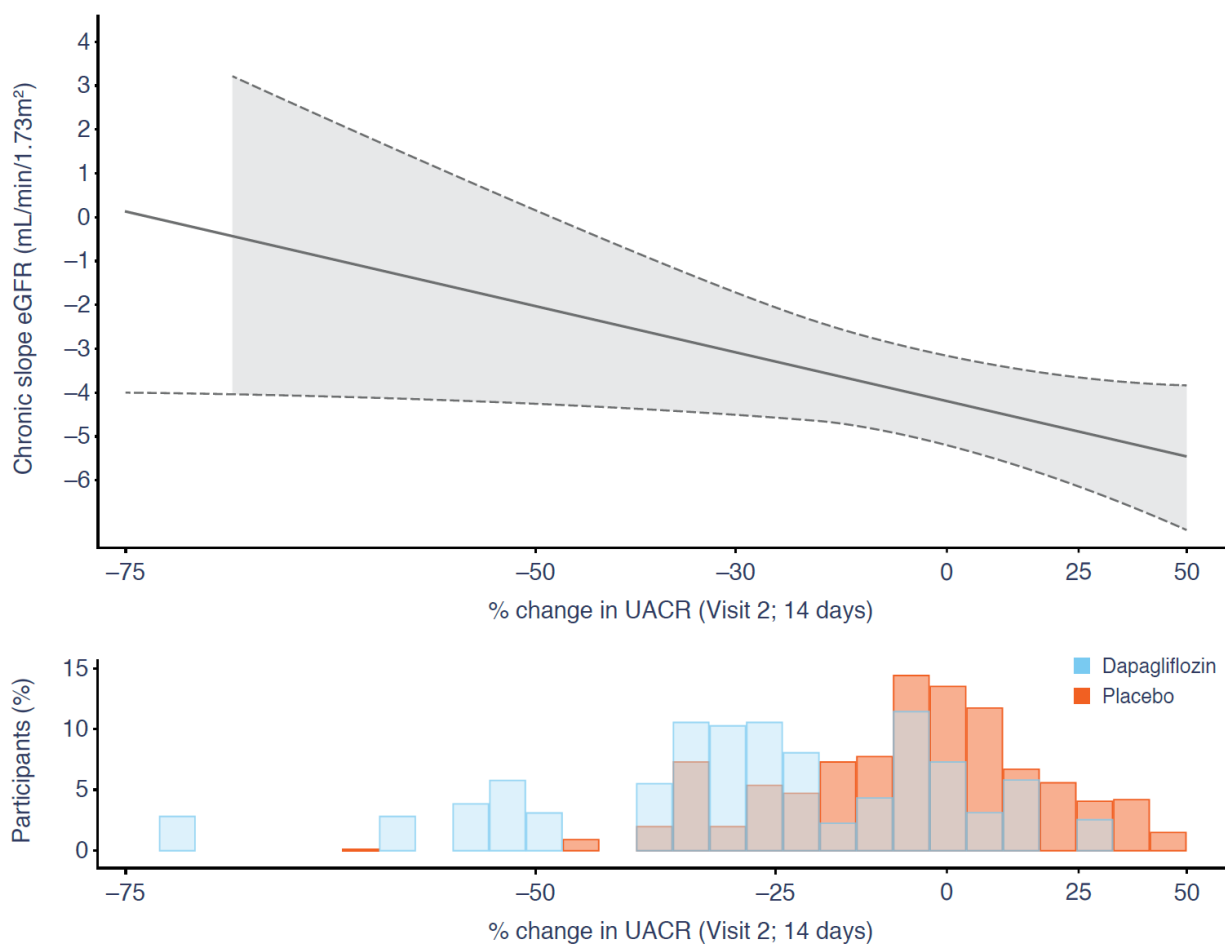


Figure 3. Relationship between percentage change in UACR from baseline to Week 2 and subsequent chronic eGFR slope* in patients with focal segmental glomerulosclerosis in the dapagliflozin and placebo groups combined

* Chronic eGFR slope is calculated from Week 2 to end of treatment and expressed as mL/min/1.73m² per year.

The solid line represents the chronic eGFR slope in the overall FSGS population at different values of acute UACR change. The shaded area represents the 95% confidence interval.

The distribution of percent change in UACR from baseline to Week 2 in the dapagliflozin and

ORIGINAL UNEDITED

placebo group is shown in the histogram, with the bars for the treatment groups superimposed on one another.

eGFR, estimated glomerular filtration rate; UACR, urinary albumin-to-creatinine ratio

ORIGINAL UNEDITED MANUSCRIPT