

# Validation of a 22-Gene Genomic Classifier in Patients With Recurrent Prostate Cancer

## An Ancillary Study of the NRG/RTOG 9601 Randomized Clinical Trial

Felix Y. Feng, MD; Huei-Chung Huang, MA; Daniel E. Spratt, MD; Shuang (George) Zhao, MD; Howard M. Sandler, MD; Jeffrey P. Simko, MD, PhD; Elai Davicioni, PhD; Paul L. Nguyen, MD; Alan Pollack, MD, PhD; Jason A. Efstathiou, MD, PhD; Adam P. Dicker, MD, PhD; Tamara Todorovic, MSc; Jennifer Margrave, BSc; Yang (Seagle) Liu, PhD; Bashar Dabbas, MD; Darby J. S. Thompson, PhD; Rajdeep Das, MD, PhD; James J. Dignam, PhD; Christopher Sweeney, MD; Gerhardt Attard, PhD; Jean-Paul Bahary, MD; Himanshu R. Lukka, MD; William A. Hall, MD; Thomas M. Pisansky, MD; Amit B. Shah, MD; Stephanie L. Pugh, PhD; William U. Shipley, MD; Phuoc T. Tran, MD, PhD

**IMPORTANCE** Decipher (Decipher Biosciences Inc) is a genomic classifier (GC) developed to estimate the risk of distant metastasis (DM) after radical prostatectomy (RP) in patients with prostate cancer.

**OBJECTIVE** To validate the GC in the context of a randomized phase 3 trial.

**DESIGN, SETTING, AND PARTICIPANTS** This ancillary study used RP specimens from the phase 3 placebo-controlled NRG/RTOG 9601 randomized clinical trial conducted from March 1998 to March 2003. The specimens were centrally reviewed, and RNA was extracted from the highest-grade tumor available in 2019 with a median follow-up of 13 years. Clinical-grade whole transcriptomes from samples passing quality control were assigned GC scores (scale, 0-1). A National Clinical Trials Network–approved prespecified statistical plan included the primary objective of validating the independent prognostic ability of GC for DM, with secondary end points of prostate cancer–specific mortality (PCSM) and overall survival (OS). Data were analyzed from September 2019 to December 2019.

**INTERVENTION** Salvage radiotherapy (sRT) with or without 2 years of bicalutamide.

**MAIN OUTCOMES AND MEASURES** The preplanned primary end point of this study was the independent association of the GC with the development of DM.

**RESULTS** In this ancillary study of specimens from a phase 3 randomized clinical trial, GC scores were generated from 486 of 760 randomized patients with a median follow-up of 13 years; samples from a total of 352 men (median [interquartile range] age, 64.5 (60-70) years; 314 White [89.2%] participants) passed microarray quality control and comprised the final cohort for analysis. On multivariable analysis, the GC (continuous variable, per 0.1 unit) was independently associated with DM (hazard ratio [HR], 1.17; 95% CI, 1.05-1.32;  $P = .006$ ), PCSM (HR, 1.39; 95% CI, 1.20-1.63;  $P < .001$ ), and OS (HR, 1.17; 95% CI, 1.06-1.29;  $P = .002$ ) after adjusting for age, race/ethnicity, Gleason score, T stage, margin status, entry prostate-specific antigen, and treatment arm. Although the original planned analysis was not powered to detect a treatment effect interaction by GC score, the estimated absolute effect of bicalutamide on 12-year OS was less when comparing patients with lower vs higher GC scores (2.4% vs 8.9%), which was further demonstrated in men receiving early sRT at a prostate-specific antigen level lower than 0.7 ng/mL (−7.8% vs 4.6%).

**CONCLUSIONS AND RELEVANCE** This ancillary validation study of the Decipher GC in a randomized trial cohort demonstrated association of the GC with DM, PCSM, and OS independent of standard clinicopathologic variables. These results suggest that not all men with biochemically recurrent prostate cancer after surgery benefit equally from the addition of hormone therapy to sRT.

**TRIAL REGISTRATION** ClinicalTrials.gov identifier: [NCT00002874](https://clinicaltrials.gov/ct2/show/study/NCT00002874)

*JAMA Oncol.* 2021;7(4):544-552. doi:10.1001/jamaoncol.2020.7671  
Published online February 11, 2021. Corrected on April 15, 2021.

← Invited Commentary page 553

+ Supplemental content

**Author Affiliations:** Author affiliations are listed at the end of this article.

**Corresponding Authors:** Felix Y. Feng, MD, UCSF Helen Diller Family Comprehensive Cancer Center, 1450 Third St, PO Box 3110, San Francisco, CA 94158 ([felix.feng@ucsf.edu](mailto:felix.feng@ucsf.edu)); Phuoc T. Tran, MD, PhD, Johns Hopkins Sidney Kimmel Comprehensive Cancer Center, 1550 Orleans St, CRB2 Rm 406, Baltimore, MD 21231 ([tranp@jhmi.edu](mailto:tranp@jhmi.edu)).

Currently, the management of localized or recurrent prostate cancer is largely based on risk stratification using clinicopathologic variables incorporated into national and international consensus guidelines. However, numerous studies demonstrated that standard prognostic clinicopathologic variables, such as Gleason score, T stage, and prostate-specific antigen (PSA), have modest performance to accurately identify men with more biologically aggressive disease.<sup>1</sup> There is a significant need to develop and incorporate into clinical practice the prognostic biomarkers that can add to or replace these risk stratification schemes to more accurately determine which tumors are indolent and which are biologically aggressive.

Decipher (Decipher Biosciences Inc), a 22-gene genomic classifier (GC) derived from a commercial, high-throughput, clinical-grade whole transcriptome profiling platform, was developed to improve the estimation of patient prognosis.<sup>2</sup> The GC was developed in a radical prostatectomy (RP) cohort, and the signature was trained to predict the development of distant metastasis (DM). In validation studies using retrospective institutional cohorts, the GC was consistently superior in its prognostic and discriminatory ability when compared with clinicopathologic variables for multiple oncologic end points.<sup>3-8</sup>

However, to date and to our knowledge, no clinically available genomic biomarker has been validated in the context of a phase 3 randomized trial in prostate cancer. Therefore, this secondary analysis sought to clinically validate the GC in the NRG/RTOG 9601 randomized trial of men with recurrent prostate cancer after RP.<sup>9</sup> It was hypothesized that the GC would independently predict the development of DM and could be used to help personalize the use of hormone therapy with salvage radiation therapy (sRT). Furthermore, it was hypothesized that the GC would also independently stratify the risk of prostate cancer-specific mortality (PCSM) and overall survival (OS).

## Methods

### Trial and Ancillary Project Details

The NRG/RTOG 9601 study was a double-blind trial conducted from March 1998 to March 2003 of men receiving sRT with either a placebo or 150 mg bicalutamide daily for 2 years (trial protocol available in [Supplement 1](#)).<sup>8</sup> The trial was sponsored by the National Cancer Institute with original ethical approval and conducted through NRG Oncology/RTOG. Eligible patients were required to have recurrent disease after RP with a PSA of 0.2 to 4.0 ng/mL, pathologic T3 disease (tumor spread beyond the prostate) or T2 disease (tumor contained within the prostate) with a positive surgical margin and no evidence of nodal or metastatic disease. Salvage radiation therapy was delivered to the prostate bed at a dose of 64.8 Gy in 1.8 Gy per fraction using 2- or 3-dimensional radiotherapy techniques. All enrolled patients gave written informed consent obtained as documented in the original trial publication.<sup>8</sup> Approval for this ancillary study (NRG-GU-TSO02 CSC0075) was granted from the National Clinical Trials Network Core Correlative Sciences Committee (NCTN-CCSC). This study followed the Consolidated Standards of Reporting Trials (CONSORT) reporting guideline.

### Key Points

**Question** Can a genomic biomarker estimate the risk of prostate cancer clinical end points in men who received salvage radiation for rising prostate-specific antigen levels after surgery?

**Findings** In this ancillary study of 352 men randomized to placebo or hormone therapy in the NRG/RTOG 9601 clinical trial of salvage radiation, the Decipher genomic classifier was independently associated with the risk of metastasis, prostate cancer-specific mortality, and overall survival.

**Meaning** These findings suggest that the Decipher genomic classifier is a promising biomarker to risk stratify men to better enable hormone therapy treatment decisions for biochemical recurrence of their prostate cancer after surgery.

### RNA Processing and Analysis

After NCTN-CCSC approval, an NRG biobank pathologist (J.P.S.) performed a pathology review of all available RP samples, the highest-grade tumor focus was identified, and specimens from corresponding blocks or unstained slides were deidentified and sent to Decipher Biosciences Inc for RNA extraction. Formalin-fixed paraffin-embedded tissue samples were taken from freshly cut tissue slides or punch biopsy samples from submitted RP blocks or were from archived unstained tissue slides submitted at the time of enrollment. Decipher Biosciences Inc was blinded to all patient, tumor, and outcomes data from the trial at this stage. Tumor RNA was extracted after macrodissection guided by a histologic review of a matched hematoxylin and eosin slide of the tumor lesion. For all cases analyzed, at least 0.5 mm<sup>2</sup> of tumor with at least 60% tumor cellularity was required for the assay. For all samples, specimen selection, RNA extraction, and microarray hybridization were done in a Clinical Laboratory Improvement Amendments-certified laboratory facility (Decipher Biosciences Inc). Quality control was performed using Affymetrix Power Tools (Thermo Fisher Scientific), and normalization was performed using the Single Channel Array Normalization algorithm.<sup>10</sup> Per the Clinical Laboratory Improvement Amendments and standard operating procedures, each sample was required to meet prespecified criteria from tumor sampling, RNA extraction, cDNA amplification, and a series of microarray quality control (QC) metrics. Of the 760 patients enrolled in NRG/RTOG 9601 between March 1998 and March 2003, 522 patients (69%) had RP tissue with sufficient tumor to attempt genomic profiling (eFigure 1 in [Supplement 2](#)). A total of 486 of 760 samples (64%) had RNA of sufficient quality for microarray profiling and generation of a GC score. A subsequent 352 of 522 samples (67%) passed microarray QC and comprised the final cohort for analysis, with equal distribution between treatment arms (176 patients in each arm). The tissue blocks obtained from this trial were aged a median of 21 years (range, 17-29 years). Quality control pass rates were 87% from tissue blocks but only 32% from archived tissue slides submitted at the time of patient enrollment. Only samples that passed all of these criteria were included in the final analysis, but sensitivity analyses were also performed on the larger cohort of 486 samples with GC scores.

### GC Scores

For samples passing QC, GC scores were calculated on a continuous scale from 0 (lowest) to 1 (highest). Each score is associated with the probability of 5-year metastasis. Previously locked commercial GC cut points of 0.45 and 0.60 used for clinical testing were applied to define the 3 GC risk groups (low, intermediate, and high).<sup>11</sup> Additionally, the NCTN-CCSC-approved application prespecified a lower GC cut point of 0.40, the cut point originally used in analysis of older, archived samples.<sup>4</sup> Once the GC scores were generated, the gene expression data were linked to the clinical and outcomes data kept by NRG for analysis.

### End Points

The primary end point of this ancillary project was the independent association of the GC with the development of DM. This outcome was assessed with multivariable analyses (MVAs) after adjusting for patient, treatment, and tumor characteristics. Secondary end points to be analyzed in a similar fashion included PCSM and OS. All end points were defined per the NCTN-CCSC trial protocol. Exploratory end points included the ability of the GC to prognosticate time to second biochemical recurrence, metastasis-free survival (metastasis or death as events), and progression-free survival (biochemical recurrence, local failure, metastasis, or death as events).

### Statistical Analysis

The statistical analysis plan was prespecified, reviewed, and approved by the NCTN-CCSC. This plan included sample size justifications for both prognostic and predictive evaluations (ie, interaction test between the biomarker and hormone therapy) of GC that assumed a 30% sample loss rate and 12-year DM rate of 23% (eMethods in Supplement 2). These assumptions provided 90% power to detect an HR of 1.13 (for a 10% change in GC) using a 2-sided  $\alpha$  of .05. With the additional assumptions of equal sample loss in both arms, a 12-year DM rate of 14.5% for the treatment vs 23% for the placebo arm, and that 50% of samples would have a higher GC (score >0.4), a GC by treatment interaction HR of 0.49 would result in only 35% power. Therefore, a priori, the study was sufficiently powered for the prognostic evaluation but underpowered for the predictive evaluation of GC response to treatment.

Test statistics for between-group comparisons were provided using the Fisher exact test or the  $\chi^2$  test for categorical variables and Wilcoxon rank sum test or Kruskal-Wallis test for continuous variables across 2 or more groups, respectively.

Distant metastasis and PCSM rates were estimated in GC risk groups using cumulative incidence functions (treating death without an event and death from other causes as competing risks) and compared using the Gray test. Overall survival was estimated by the Kaplan-Meier method, and the log-rank test was used for comparison. To assess the prognostic performance of GC, univariable analyses and MVAs of Cox proportional hazards models (nonevents treated as censored) with the Firth method to account for small event size (unless stated otherwise) were conducted in the full cohort and in subcohorts.<sup>12</sup> Subgroup analyses were performed in the sRT-only cohort (defined a priori) and the early salvage (ie, patients enrolled with

PSA < 0.7 ng/mL) cohort. Adjusted variables defined a priori and used in the full-cohort MVAs were age, race/ethnicity, Gleason score, T stage, entry PSA, margin status, PSA nadir status, and treatment arm. Only variables that reached the significance level of  $P < .05$  in univariable analyses were included in the subsequent MVAs to reduce the number of fitted variables; the same rule applied to subgroup analyses.

The interaction effect of treatment arm and GC was assessed for DM, PCSM, and OS without adjusting for any covariables. Similarly, interaction models of the treatment arm with GC risk groups (intermediate and high were combined owing to sample size constraints) were built to estimate event rates at 12 years, which then were used to calculate the difference in rates between treatment and placebo for each GC risk group (bootstrapped 95% CIs were obtained from 200 resampled data sets). Sensitivity analyses were carried out to ensure the robustness of our findings, including adjusting models with continuous variables, such as age, PSA, and GC score, as categorical; comparing results across Cox proportional hazards models, Cox proportional hazards models with the Firth method, and Fine-Gray models accounting for competing risks; and adjusting for the time from surgery to enrollment.

Statistical analyses were performed from September 2019 to December 2019 using R, version 3.5.1 (R Foundation). All statistical tests were 2-sided, and  $P$  values less than .05 were deemed statistically significant.

## Results

Genomic classifier scores were generated from 486 of 760 randomized patients with a median follow-up of 13 years; samples from a total of 352 men (median age, 64.5 [interquartile range (IQR), 60-70] years; 314 White participants [89.2%]) passed microarray QC and comprised the final cohort for analysis. The 2 arms of the final cohort were balanced for all patient, clinical, and pathologic characteristics (176 patients in each arm) (Table 1) and were similar to both the overall trial cohort and patients whose samples did not pass all QC measures (eTable 1 in Supplement 2). The median GC scores of each arm of the final cohort were similar: 0.43 (IQR, 0.29-0.59) vs 0.44 (IQR, 0.27-0.57) for the control and investigational arms, respectively (Wilcoxon  $P = .29$ ) (eFigure 2 in Supplement 2). The final cohort consisted of 148 of 352 GC low (42%), 132 of 352 GC intermediate (38%), and 72 of 352 GC high risk (20%). There was marked heterogeneity of genomic risk within all clinical and pathologic subgroups but no significant differences in GC distribution between the 2 study arms (eFigure 2 in Supplement 2).

### Association of 22-Gene GC With Oncologic Outcomes

The GC was analyzed as both a categorical (3 risk groups) and a continuous (scale, 0-1) variable. In univariable analyses, GC as a continuous variable (per 0.1 unit) was significantly associated with the primary end point, DM (HR, 1.26; 95% CI, 1.12-1.41;  $P < .001$ ), and the secondary end points, PCSM (HR, 1.51; 95% CI, 1.30-1.77;  $P < .001$ ) and OS (HR, 1.21; 95% CI, 1.10-1.33;  $P < .001$ ) (eTable 2 in Supplement 2). The GC categorical

Table 1. Demographic, Baseline Clinical, and Genomic Characteristics of the Analytic Cohort<sup>a</sup>

Characteristic	No. (%) <sup>b</sup>		
	Placebo	Treatment	Total
Total	176 (50.0)	176 (50.0)	352
Age, y			
Median (IQR)	64 (60-69)	65 (60-70)	64.5 (60-70)
≤49	3 (1.7)	1 (0.6)	4 (1.1)
50-59	36 (20.5)	42 (23.9)	78 (22.2)
60-69	94 (53.4)	87 (49.4)	181 (51.4)
70-79	41 (23.3)	44 (25.0)	85 (24.1)
≥80	2 (1.1)	2 (1.1)	4 (1.1)
Race/ethnicity			
White	156 (88.6)	158 (89.8)	314 (89.2)
Hispanic	1 (0.6)	5 (2.8)	6 (1.7)
African American	13 (7.4)	12 (6.8)	25 (7.1)
Asian	3 (1.7)	1 (0.6)	4 (1.1)
American Indian	1 (0.6)	NA	1 (0.3)
Other	2 (1.1)	NA	2 (0.6)
Karnofsky performance status score			
80	1 (0.6)	3 (1.7)	4 (1.1)
90	51 (29.0)	37 (21.0)	88 (25.0)
100	124 (70.5)	136 (77.3)	260 (73.9)
Gleason score			
2-6	51 (29.0)	53 (30.1)	104 (29.5)
7	96 (54.5)	93 (52.8)	189 (53.7)
8-10	29 (16.5)	29 (16.5)	58 (16.5)
Unavailable		1 (0.6)	1 (0.3)
T stage <sup>c</sup>			
T2	56 (31.8)	62 (35.2)	118 (33.5)
T3	120 (68.2)	114 (64.8)	234 (66.5)
Neoadjuvant hormone use			
Yes	13 (7.4)	10 (5.7)	23 (6.5)
Positive surgical margins			
Yes	132 (75.0)	132 (75.0)	264 (75.0)
PSA nadir after surgery			
Median (IQR)	0.1 (0.1-0.2)	0.1 (0.1-0.2)	0.1 (0.1-0.2)
<0.5 ng/mL	161 (91.5)	158 (89.8)	319 (90.6)
≥0.5 ng/mL	15 (8.5)	18 (10.2)	33 (9.4)
PSA level at trial entry			
Median (IQR)	0.7 (0.38-1.2)	0.675 (0.4-1.01)	0.7 (0.4-1.1)
<0.7 ng/mL	87 (49.4)	88 (50.0)	175 (49.7)
0.7-1.5 ng/mL	57 (32.4)	62 (35.2)	119 (33.8)
>1.5-4.0 ng/mL	32 (18.2)	26 (14.8)	58 (16.5)
Follow-up, y			
Median (IQR)	13 (11.7-14.1)	13 (11.4-14.1)	13 (11.7-14.1)
GC score			
Median (IQR)	0.43 (0.287-0.59)	0.44 (0.27-0.57)	0.435 (0.28-0.58)

Abbreviations: GC, genomic classifier; IQR, interquartile range; NA, not applicable; PSA, prostate-specific antigen.

<sup>a</sup> All patients with samples passed assay quality control metrics. There were no significant differences across the treatment arms.

<sup>b</sup> Values are listed as No. (%) unless otherwise specified.

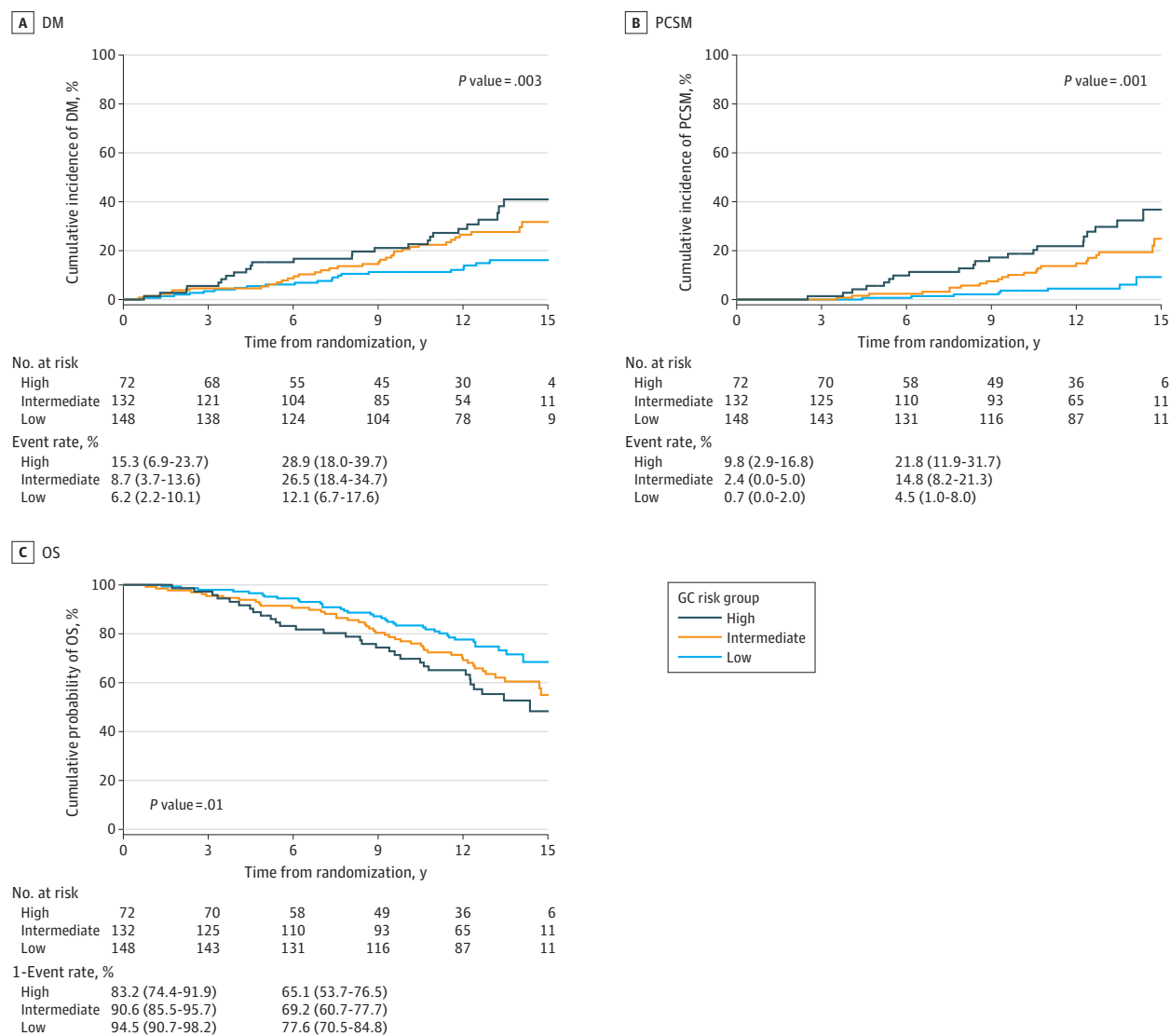
<sup>c</sup> T2 prostate cancer indicates that the tumor is confined to the prostate. T3 prostate cancer indicates that the tumor has grown outside the prostate.

risk groups also significantly stratified the risk of DM (event rate: high, 15.3% [95% CI, 6.9%-23.7%]; intermediate, 8.7% [95% CI, 3.7%-13.6%]; low, 6.2% [95% CI, 2.2%-10.1%];  $P = .003$ ), PCSM (event rate: high, 9.8% [95% CI, 2.9%-16.8%]; intermediate, 2.4% [95% CI, 0.0%-5.0%]; low, 0.7% [95% CI, 0.0%-2.0%];  $P < .001$ ), and OS (event rate: high, 83.2% [95% CI, 74.4%-91.9%]; intermediate, 90.6% [95% CI, 85.5%-

95.7%]; low, 94.5% [95% CI, 90.7%-98.2%];  $P = .013$ ) (Figure 1 and eFigure 3 in Supplement 2).

There was not a statistically significant interaction between GC score and hormone treatment effect for DM (HR, 1.03; 95% CI, 0.82-1.30;  $P = .80$ ), PCSM (HR, 1.13; 95% CI, 0.81-1.57;  $P = .46$ ), or OS (HR, 0.97; 95% CI, 0.80-1.17;  $P = .76$ ) (eTable 3 in Supplement 2). Despite this lack of significance,

**Figure 1. Cumulative Incidence Estimates of Distant Metastasis (DM) and Prostate Cancer–Specific Mortality (PCSM) and Kaplan-Meier Estimates of Overall Survival (OS) by Genomic Classifier (GC) Risk Group**



All patients with samples passing assay quality control metrics. The GC risk groups were categorized based on per-protocol cut points of 0.4 and 0.6. The numbers in parentheses are 95% CIs.

the estimated absolute benefits in DM, PCSM, and OS observed with hormone therapy were different by GC risk groups; the 12-year benefit from the addition of hormone therapy was approximately 3-fold greater in intermediate and high GC scores than in low GC scores (all patients, low vs intermediate and high: DM, 5.0% vs 15.7%; PCSM, 4.5% vs 11.8%; OS, 2.4% vs 8.9%) (Figure 2A and eTable 4 in Supplement 2). For example, the 12-year improvement in OS with the addition of hormone therapy in GC low scores was 2.4% compared with 8.9% for GC intermediate/high scores.

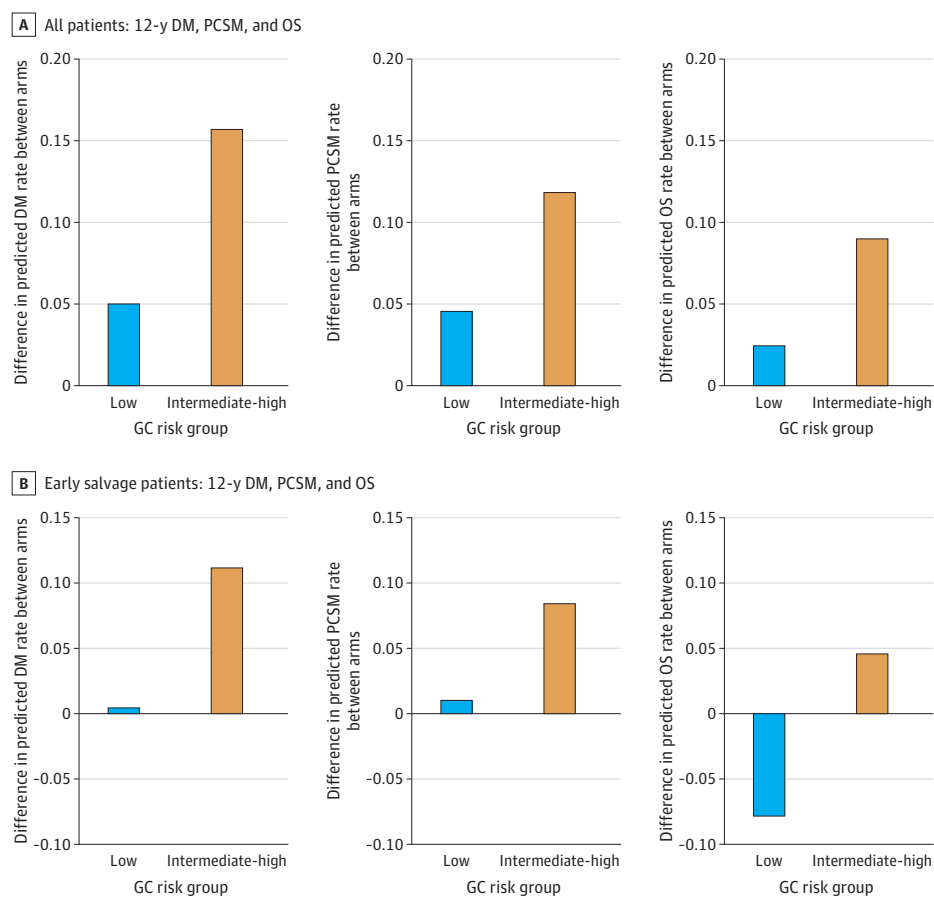
The GC score was prognostic in the subset of patients treated with earlier sRT when PSA was less than the median entry value (0.7 ng/mL) (eTable 5 in Supplement 2). The DM benefits from additional hormone therapy were estimated to be 0.4% vs 11.2% in low and higher GC risk groups, respec-

tively (Figure 2B; eTable 4 in Supplement 2). The absolute effect of hormone therapy in low vs higher GC score on 12-year PCSM was 1.0% vs 8.4% and on OS was -7.8% vs 4.6%.

The GC was then analyzed both continuously and categorically, adjusting for age, race/ethnicity, Gleason score, T stage, margin status, entry PSA, and treatment arm. In the MVAs, continuous GC was independently associated with DM (HR, 1.17; 95% CI, 1.05-1.32;  $P = .006$ ), PCSM (HR, 1.39; 95% CI, 1.20-1.63;  $P < .001$ ), and OS (HR, 1.17; 95% CI, 1.06-1.29;  $P = .002$ ) (Table 2). The results were similar when GC was analyzed categorically (eTable 2 in Supplement 2).

### Exploratory and Sensitivity Analysis

The GC score was prognostic also across other end points, including second biochemical recurrence (treatment arm: HR,

**Figure 2. Difference Between Arms, by Genomic Classifier (GC) Risk Group, for Predicted Rates of Distant Metastasis (DM), Prostate Cancer–Specific Mortality (PCSM), and Overall Survival (OS) at 12 Years****Table 2. Multivariable Analysis of GC for Distant Metastasis, Death From Prostate Cancer, and Overall Survival<sup>a</sup>**

Variable	DM		PCSM		OS	
	Hazard ratio (95% CI)	P value	Hazard ratio (95% CI)	P value	Hazard ratio (95% CI)	P value
GC score	1.17 (1.05-1.32)	.006 <sup>b</sup>	1.39 (1.20-1.63)	<.001 <sup>b</sup>	1.17 (1.06-1.29)	.002 <sup>b</sup>
Treatment vs placebo	0.62 (0.39-0.97)	.04 <sup>b</sup>	0.53 (0.30-0.92)	.02 <sup>b</sup>	0.82 (0.57-1.19)	.29
Age ≥65 vs <65, y	1.30 (0.83-2.06)	.25	1.52 (0.88-2.66)	.14	1.95 (1.33-2.91)	<.001 <sup>b</sup>
African American vs non-African American	0.88 (0.28-2.13)	.80	0.86 (0.17-2.73)	.83	1.35 (0.57-2.77)	.47
Gleason 8-10 vs ≤7	2.11 (1.24-3.47)	.007 <sup>b</sup>	2.53 (1.38-4.49)	.003 <sup>b</sup>	1.87 (1.20-2.85)	.007 <sup>b</sup>
T3 vs T2	1.42 (0.82-2.58)	.22	2.01 (0.97-4.62)	.06	1.24 (0.79-1.97)	.35
PSA level at trial entry	1.16 (0.88-1.49)	.26	1.37 (1.01-1.80)	.04 <sup>b</sup>	1.08 (0.84-1.35)	.53
Positive surgical margins	0.71 (0.44-1.16)	.17	1.26 (0.68-2.44)	.46	0.98 (0.64-1.53)	.92
Non-nadir vs nadir (<0.5 ng/mL)	1.31 (0.62-2.51)	.46	2.10 (0.92-4.26)	.07	1.98 (1.13-3.30)	.02 <sup>b</sup>

Abbreviations: DM, distant metastasis; GC, genomic classifier; OS, overall survival; PCSM, death from prostate cancer; PSA, prostate-specific antigen.

<sup>a</sup> One patient was dropped from the analyses owing to missing Gleason information. The median age of the analytic cohort was 65 years.

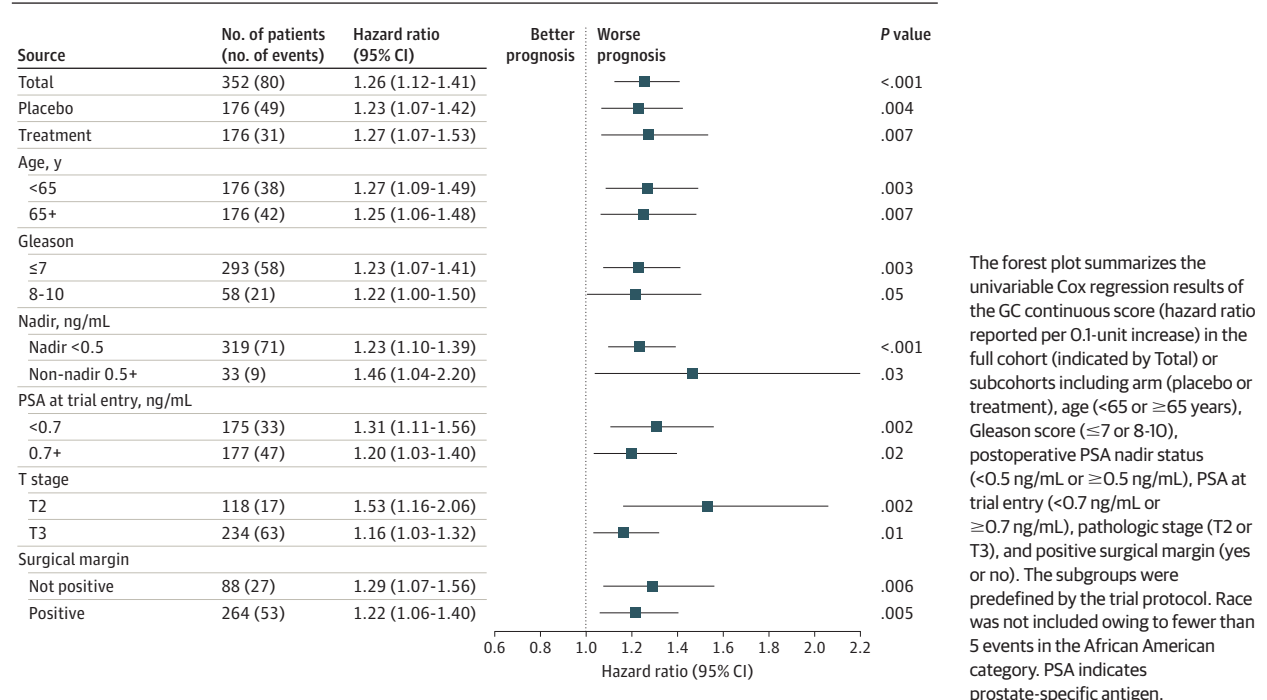
Race/ethnicity, Gleason score, cancer stage, and nadir status were grouped according to the trial protocol. Hazard ratios of GC were per 0.1 unit increased.

<sup>b</sup>  $P < .05$ .

1.24; 95% CI, 1.10-1.39;  $P < .001$ ), distant progression-free survival (treatment arm: HR, 1.19; 95% CI, 1.08-1.31;  $P < .001$ ), and metastasis-free survival (treatment arm: HR, 1.17; 95% CI, 1.04-1.33;  $P = .008$ ) (eFigure 4 in Supplement 2). Additionally, the GC score was consistently prognostic within all subgroups, in-

cluding treatment arm (HR, 1.27; 95% CI, 1.07-1.53;  $P = .007$ ), age (<65 years, HR, 1.27; 95% CI, 1.09-1.49;  $P = .003$ ; ≥65 years, HR, 1.25; 95% CI, 1.06-1.48;  $P = .007$ ), Gleason score (Gleason ≤7, HR, 1.23; 95% CI, 1.07-1.41;  $P = .003$ ; Gleason 8-10, HR, 1.22; 95% CI, 1.00-1.50;  $P = .05$ ), surgical margin status (no

Figure 3. Prognostic Performance of Genomic Classifier (GC) for Distant Metastasis (DM) in Subgroups



margin, HR, 1.29; 95% CI, 1.07-1.56;  $P = .006$ ; positive margin, HR, 1.22; 95% CI, 1.06-1.40;  $P = .005$ , PSA nadir (<0.5 ng/mL, HR, 1.23; 95% CI, 1.10-1.39;  $P < .001$ ), tumor stage (T2, HR, 1.53; 95% CI, 1.16-2.06;  $P = .002$ ; T3, HR, 1.16; 95% CI, 1.03-1.32;  $P = .01$ ), and entry PSA level (<0.7 ng/mL, HR, 1.31; 95% CI, 1.11-1.56;  $P = .002$ ; ≥0.7 ng/mL, HR, 1.20; 95% CI, 1.03-1.40;  $P = .02$ ) (Figure 3 and eTables 5 and 6 in Supplement 2 for early salvage subset and sRT-only arm, respectively) and with different modeling methods (eTable 7 in Supplement 2).

## Discussion

To date and to our knowledge, no multigene expression biomarker has been rigorously validated as a prognostic or predictive test in patients with prostate cancer who are receiving radical therapy.<sup>13</sup> This circumstance has resulted in lack of complete support from consensus guideline panels for standard of care use of genomic biomarkers, given the potential for bias from institutional retrospective cohorts. The present study is, to our knowledge, the first prospectively designed validation study of a GC conducted from a large NCTN double-blinded randomized clinical trial in men receiving sRT with either placebo or bicalutamide daily for 2 years. In this study, the GC was prognostic for DM, PCSM, and OS when evaluated as a continuous score and as a 3-tier GC risk group system. The difference between GC low risk and higher risk groups for the prespecified primary end point of DM was large and statistically significant. Specifically, patients with intermediate and high GC scores had an 88% increased risk of DM vs those with low GC scores. The GC identified substantial heterogeneity within a given clinicopathologic subgroup, and many patients with

adverse pathologic features harbored lower genomic risk. In MVAs, GC was independently prognostic.

In our current study, the GC was strongly and independently prognostic, though it did not have a statistically significant interaction with hormonal therapy. The final GC cohort was limited to 352 patients, and our prespecified statistical plan did not have adequate power to identify a statistical interaction between the GC and hormone therapy for any end point in the study. Although predictive biomarkers can help personalize therapeutic intervention,<sup>7,14</sup> prognostic biomarkers can also identify patients at low risk of recurrence and those who are unlikely to experience meaningful clinical benefit from treatment intensification. This situation is illustrated by patients with lower GC scores having a 2.4% absolute improvement in 12-year OS compared with 8.9% in patients with higher GC scores. This approximate 4-fold difference may help guide shared decision-making. For some patients, the risk of toxic effects, cost, and possible effects on quality of life from long-term hormone therapy may erode further OS benefit. Patients with shorter comorbidity-adjusted life expectancy may also have lesser benefit. However, the estimated 8.9% absolute improvement in OS in patients with a higher GC score may affect the risk-benefit ratio to favor the addition of hormone therapy to sRT.

The importance of accurate prognostication perhaps is even greater in patients receiving earlier sRT at a PSA below 0.7 ng/mL. Indeed, a recent secondary analysis of RTOG 9601 demonstrated that pre-sRT PSA level in itself may be a prognostic biomarker for outcomes of antiandrogen treatment with sRT.<sup>7,15</sup> This study demonstrates that within patients receiving earlier sRT, patients with higher GC scores derived an 11.2% improvement in 12-year DM and a 4.6% improvement in OS from the addition of hormone therapy. The CIs for these

estimates cross 0% and are wide given the reduced sample size, but they illustrate the potential utility of personalizing shared decision-making beyond using PSA to drive hormone therapy utilization.

One challenge in the conduct of this study was the median age of the RP tissue being older than 20 years, which was reflected in the approximately 70% QC pass rate. Notably, the majority of the failures were from tissue cases submitted as unstained slides, suggesting that archived tissue blocks should be the preferred sample type for cooperative group biorepository initiatives. Importantly, the patient characteristics of the samples that did and did not pass QC were similar, reassuring that there was no selection bias introduced. However, it is possible that the age of the samples could shift the GC categorical cut points, and it is recommended that the GC be primarily interpreted on a continuous scale from 0 to 1. This maximizes statistical power and better assesses the relative risk increase across the GC scale.

### Strengths and Limitations

Strengths of this correlative analysis include the prospective, randomized, and double-blinded design of the NRG/RTOG 9601 trial, the long clinical follow-up, a well-balanced and profiled cohort, the stringent Clinical Laboratory Improvement Amendments-certified laboratory facility procedures to pro-

file the whole human transcriptome from clinical samples, and the NCTN-CCSC prespecified statistical plan to validate the GC. Limitations to this study include the fact that only a subset of clinical samples from the NRG/RTOG 9601 trial was available for profiling with the GC (31.3% of patient tissue was not available from the trial) and that one-third (or 22.4% of total trial) of the remaining clinical samples did not pass QC. As mentioned previously, this more limited sample size may explain the lack of a statistically significant interaction term observed between treatment and the GC. Ongoing randomized trials in the sRT setting have also prospectively incorporated GC testing (Decipher), seeking to validate these findings.<sup>16,17</sup>

### Conclusions

In summary, the findings from this ancillary analysis of a randomized clinical trial represent the first validation in prostate cancer of a high-throughput, clinical-grade, whole transcriptome-based GC from a prospective randomized trial, and the findings add to the evidence base supporting the use of the GC to guide shared decision-making after RP. The results of this and other studies strongly suggest that not all men with biochemically recurrent prostate cancer after surgery derive equal absolute benefits from the addition of hormone therapy to sRT.

#### ARTICLE INFORMATION

**Accepted for Publication:** November 6, 2020.

**Published Online:** February 11, 2021.  
doi:10.1001/jamaoncol.2020.7671

**Correction:** This article was corrected on April 15, 2021, to change the article to open access status.

**Open Access:** This is an open access article distributed under the terms of the [CC-BY-NC-ND License](#). © 2021 Feng FY et al. *JAMA Oncology*.

**Author Affiliations:** Department of Radiation Oncology, UCSF Medical Center, San Francisco, California (Feng, Das); Department of Medicine, UCSF Medical Center, San Francisco, California (Feng, Das); Department of Urology, UCSF Medical Center, San Francisco, California (Feng, Das); Decipher Biosciences, San Diego, California (Huang, Davicioni, Todorovic, Margrave, Liu, Dabbas); Department of Radiation Oncology, University of Michigan, Ann Arbor (Spratt, Zhao); Department of Radiation Oncology, Cedars-Sinai Medical Center, Los Angeles, California (Sandler); NRG Biorepository, Department of Pathology, UCSF Medical Center, San Francisco, California (Simko); Department of Radiation Oncology, Brigham and Women's Hospital, Boston, Massachusetts (Nguyen); Department of Radiation Oncology, University of Miami Miller School of Medicine, Miami, Florida (Pollack); Department of Radiation Oncology, Massachusetts General Hospital, Boston, Massachusetts (Efstathiou, Shipley); Department of Radiation Oncology, Thomas Jefferson University Hospital, Philadelphia, Pennsylvania (Dicker); Emmes Canada, Vancouver, British Columbia, Canada (Thompson); NRG Oncology Statistics and Data Management Center, Philadelphia, Pennsylvania (Dignam, Pugh); Department of Public Health, University of Chicago, Chicago, Illinois (Dignam); Department of Medicine,

Dana-Farber/Harvard Cancer Center, Boston, Massachusetts (Sweeney); Department of Oncology, University College London, London, United Kingdom (Attard); Department of Radiation Oncology, Centre Hospitalier de l'Université de Montréal-Notre Dame, Montreal, Quebec, Canada (Bahary); Department of Radiation Oncology, Juravinski Cancer Centre at Hamilton Health Sciences, Hamilton, Ontario, Canada (Lukka); Department of Radiation Oncology, Froedtert and the Medical College of Wisconsin, Madison, Wisconsin (Hall); Department of Radiation Oncology, Mayo Clinic, Rochester, Minnesota (Pisansky); Department of Radiation Oncology, WellSpan Health-York Cancer Center accruals under Thomas Jefferson University Hospital, Philadelphia, Pennsylvania (Shah); Department of Radiation Oncology, Johns Hopkins University, Baltimore, Maryland (Tran); Department of Oncology, Johns Hopkins University, Baltimore, Maryland (Tran); Department of Urology, Johns Hopkins University, Baltimore, Maryland (Tran).

**Author Contributions:** Drs Feng and Tran had full access to all of the data in the study and take responsibility for the integrity of the data and the accuracy of the data analysis.

**Concept and design:** Feng, Huang, Spratt, Davicioni, Pollack, Efstathiou, Dicker, Liu, Lukka, Hall, Pisansky, Pugh, Shipley, Tran.

**Acquisition, analysis, or interpretation of data:** Feng, Huang, Spratt, Zhao, Sandler, Simko, Davicioni, Nguyen, Efstathiou, Dicker, Todorovic, Margrave, Liu, Dabbas, Thompson, Das, Dignam, Sweeney, Attard, Bahary, Lukka, Hall, Pisansky, Shah, Pugh, Tran.

**Drafting of the manuscript:** Feng, Huang, Spratt, Davicioni, Pollack, Dicker, Liu, Dabbas, Thompson, Lukka, Hall, Pugh, Tran.

**Critical revision of the manuscript for important intellectual content:** Feng, Spratt, Zhao, Sandler,

Simko, Davicioni, Nguyen, Efstathiou, Todorovic, Margrave, Liu, Dabbas, Thompson, Das, Dignam, Sweeney, Attard, Bahary, Pisansky, Shah, Pugh, Shipley, Tran.

**Statistical analysis:** Huang, Liu, Thompson, Pugh.

**Obtained funding:** Feng, Davicioni.

**Administrative, technical, or material support:** Feng, Sandler, Davicioni, Pollack, Efstathiou, Dicker, Todorovic, Margrave, Liu, Dabbas, Dignam.

**Supervision:** Feng, Spratt, Davicioni, Efstathiou, Margrave, Thompson, Bahary, Lukka, Hall, Shah, Shipley, Tran.

**Other—Co-PI of 9601 study:** Lukka.

**Other—Data collection and interpretation:** Simko.

**Conflict of Interest Disclosures:** Dr Feng reported receiving personal fees from Decipher, PFS Genomics, SerImmune, Celgene, Blue Earth Diagnostics, Astellas, Janssen, Roivant, Myovant, Genentech, Janssen Oncology, Sanofi, and Bayer; having a patent null pending during the conduct of the study; receiving grants from Zenith Epigenetics; and being a founding member and having ownership interests in PFS Genomics. Ms Huang reported receiving employee compensation from Decipher Biosciences Inc during the conduct of the study. Dr Spratt reported receiving personal fees from AstraZeneca, Janssen, BlueEarth; receiving grants from Janssen; and serving as an unpaid consultant at Decipher Bioscience outside the submitted work. Dr Zhao reported receiving grants from the Department of Defense; having a patent for genomic classifiers in prostate cancer pending with GenomeDx Biosciences and Celgene not directly related to this work; having a patent for a genomic classifier in breast cancer pending with PFS Genomics not directly related to this work; and having a family member with a leadership role at PFS Genomics, a breast cancer molecular diagnostics company, during the conduct of this



study. Dr Sandler reported receiving grants from American College of Radiology-NRG Oncology; receiving personal fees from Janssen and Radiogel; and being a member of the American Society of Radiation Oncology Board of Directors during the conduct of this study. Dr Simko reported receiving grants from the National Cancer Institute and personal fees from Decipher Incorporated to his institution to cover the costs of specimen processing during the conduct of the study. Dr Davicioni reported serving as an employee of Decipher Biosciences during the conduct of the study and having a patent (US20170191133A1) pending to Decipher Biosciences. Dr Nguyen reported receiving personal fees from COTA, Ferring, Dendreon, Blue Earth Diagnostics, Myovant, and Boston Scientific; grants and personal fees from Astellas, Bayer, and Janssen; and personal fees and equity from Augmenix outside the submitted work. Dr Efstathiou reported receiving personal fees from Blue Earth Diagnostics, Boston Scientific, AstraZeneca, Taris Biomedical, Janssen, Bayer Healthcare, and Roivant Pharma outside the submitted work. Dr Dicker reported receiving personal fees from EMD Serono, personal fees from Oncohost, personal fees from Self Care Catalyst, Cybrexa, Janssen, ThirdBridge, Roche, Varian, Albert Einstein, Wilson Socoli, Accordant, Envisio, and Noxopharm; grants and nonfinancial support from NRG Oncology; and grants from the National Cancer Institute and the Prostate Cancer Foundation outside the submitted work. Ms Todorovic reported serving as an employee of Decipher Biosciences Inc during the conduct of the study. Ms Margrave reported being an employee of Decipher Biosciences Inc during the conduct of the study. Dr Liu reported being an employee of Decipher Biosciences Inc during the conduct of the study. Dr Thompson reported that his employer (Emmes Canada) is a contract research organization contracted by Decipher Biosciences to provide statistical consulting and analysis support during the conduct of the study. Dr Dignam reported receiving grants from the US National Cancer Institute during the conduct of the study and personal fees from Merck DMC membership, Celgene DMC membership, and Janssen outside the submitted work. Dr Sweeney reported receiving grants and personal fees from Sanofi, AstraZeneca, Pfizer, Astellas, Bayer, and Janssen; personal fees from Genentech/Roche; and nonfinancial support from Decipher outside the submitted work. Dr Sweeney also reported having a patent to TTP as a biomarker of lethal prostate cancer issued and licensed during the conduct of the study. Dr Attard reported performing uncompensated collaborative research with Decipher Biosciences that could result in IP generation during the conduct of the study. Dr Lukka reported receiving per case funding for patients from RTOG/NRG Oncology and receiving personal fees from AbbVie, Astellas, Janssen, Bayer, Sanofi, AstraZeneca, Tersera, and Ferring outside the submitted work. Dr Lukka reported being coordinator of GUROC (GU Radiation Oncologists of Canada). GUROC organizes meetings every 2 years and AstraZeneca, AbbVie, Tersera, Sanofi, Janssen, Astellas, Bayer, and Ferring have provided financial support to enable these meetings to occur. Dr Hall reported receiving unrestricted departmental research support and travel support related to MR

Linac consortium leadership from Elekta and unrestricted departmental research support from Siemens Healthineers, Accuray, and Man Medical Technologies outside the submitted work. Dr Pugh reported receiving salary support paid to her institution from Millennium and salary support paid to her institution from Pfizer-Astellas outside the submitted work. Dr Tran reported receiving grants from Astellas Pharm, Bayer Healthcare, and RefleXion and personal fees from consulting from RefleXion and Ad Board from Noxopharm outside the submitted work. Dr Tran also reported having a patent (9114158, Compounds and Methods of Use in Ablative Radiotherapy) licensed to Natsar Pharm. No other disclosures were reported.

**Funding/Support:** This study was supported by grant U10CA180868 from NRG Oncology Operations, grant U10CA180822 from NRG Oncology SDMC, grant UG1CA189867 from NCORP, grant U24CA196067 from NRG Specimen Bank, and grant R01 CA240582 from the National Cancer Institute and Decipher Biosciences.

**Role of the Funder/Sponsor:** The funders had no role in the design and conduct of the study; collection, management, analysis, and interpretation of the data; preparation, review, or approval of the manuscript; and decision to submit the manuscript for publication with the exception of named collaborators from Decipher Biosciences who helped with analysis, preparation, review, and approval of the manuscript.

**Data Sharing Statement:** See Supplement 3.

**Additional Contributions:** We thank NRG staff Sheralee Miller, BA, Sandy DeVries, BA, and Suzanne Baldwin, BA, for their administrative support of the project submission to CTEP-CCSC and submission of this manuscript. They were compensated for their efforts as administrative NRG staff.

## REFERENCES

- Spratt DE, Zhang J, Santiago-Jiménez M, et al. Development and validation of a novel integrated clinical-genomic risk group classification for localized prostate cancer. *J Clin Oncol*. 2018;36(6):581-590. doi:10.1200/JCO.2017.74.2940
- Erho N, Crisan A, Vergara IA, et al. Discovery and validation of a prostate cancer genomic classifier that predicts early metastasis following radical prostatectomy. *PLoS One*. 2013;8(6):e66855. doi:10.1371/journal.pone.0066855
- Cooperberg MR, Davicioni E, Crisan A, Jenkins RB, Ghadessi M, Karnes RJ. Combined value of validated clinical and genomic risk stratification tools for predicting prostate cancer mortality in a high-risk prostatectomy cohort. *Eur Urol*. 2015;67(2):326-333. doi:10.1016/j.eururo.2014.05.039
- Karnes RJ, Bergstralh EJ, Davicioni E, et al. Validation of a genomic classifier that predicts metastasis following radical prostatectomy in an at risk patient population. *J Urol*. 2013;190(6):2047-2053. doi:10.1016/j.juro.2013.06.017
- Karnes RJ, Choerung V, Ross AE, et al. Validation of a genomic risk classifier to predict prostate cancer-specific mortality in men with adverse pathologic features. *Eur Urol*. 2018;73(2):168-175. doi:10.1016/j.eururo.2017.03.036
- Klein EA, Yousefi K, Haddad Z, et al. A genomic classifier improves prediction of metastatic disease within 5 years after surgery in node-negative high-risk prostate cancer patients managed by radical prostatectomy without adjuvant therapy. *Eur Urol*. 2015;67(4):778-786. doi:10.1016/j.eururo.2014.10.036
- Zhao SG, Chang SL, Spratt DE, et al. Development and validation of a 24-gene predictor of response to postoperative radiotherapy in prostate cancer: a matched, retrospective analysis. *Lancet Oncol*. 2016;17(11):1612-1620. doi:10.1016/S1470-2045(16)30491-0
- Spratt DE, Yousefi K, Dehesi S, et al. Individual patient-level meta-analysis of the performance of the decipher genomic classifier in high-risk men after prostatectomy to predict development of metastatic disease. *J Clin Oncol*. 2017;35(18):1991-1998. doi:10.1200/JCO.2016.70.2811
- Shibley WU, Seiferheld W, Lukka HR, et al; NRG Oncology RTOG. Radiation with or without antiandrogen therapy in recurrent prostate cancer. *N Engl J Med*. 2017;376(5):417-428. doi:10.1056/NEJMoa1607529
- Piccolo SR, Sun Y, Campbell JD, Lenburg ME, Bild AH, Johnson WE. A single-sample microarray normalization method to facilitate personalized-medicine workflows. *Genomics*. 2012;100(6):337-344. doi:10.1016/j.ygeno.2012.08.003
- Den RB, Santiago-Jimenez M, Alter J, et al. Decipher correlation patterns post prostatectomy: initial experience from 2 342 prospective patients. *Prostate Cancer Prostatic Dis*. 2016;19(4):374-379. doi:10.1038/pcan.2016.38
- Firth D. Bias reduction of maximum likelihood estimates. *Biometrika*. 1993;80:27-38. doi:10.1093/biomet/80.1.27
- D'Amico AV. Decipher postprostatectomy: is it ready for clinical use? *J Clin Oncol*. 2017;35(18):1976-1977. doi:10.1200/JCO.2016.71.8486
- Zhao SG, Chang SL, Erho N, et al. Associations of luminal and basal subtyping of prostate cancer with prognosis and response to androgen deprivation therapy. *JAMA Oncol*. 2017;3(12):1663-1672. doi:10.1001/jamaoncol.2017.0751
- Dess RT, Sun Y, Jackson WC, et al. Association of presalvage radiotherapy PSA levels after prostatectomy with outcomes of long-term antiandrogen therapy in men with prostate cancer. *JAMA Oncol*. 2020;6(5):735-743. doi:10.1001/jamaoncol.2020.0109
- Antiandrogen therapy and radiation therapy with or without docetaxel in treating patients with prostate cancer that has been removed by surgery. Clinicaltrials.gov identifier: NCT03070886. Updated December 9, 2020. Accessed December 30, 2020. <https://clinicaltrials.gov/ct2/show/NCT03070886>
- Biomarker trial of apalutamide and radiation for recurrent prostate cancer (balance). Clinicaltrials.gov identifier: NCT03371719. Updated May 21, 2020. Accessed December 30, 2020. <https://clinicaltrials.gov/ct2/show/NCT03371719>