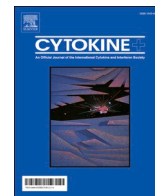




Contents lists available at ScienceDirect

Cytokine

journal homepage: www.elsevier.com/locate/cytokine

Differential levels of IFN α subtypes in autoimmunity and viral infection

Vincent Bondet^a, Mathieu P. Rodero^b, Céline Posseme^{a,c}, Pierre Bost^{d,e}, Jérémie Decalf^a, Liis Haljasmägi^f, Nassima Bekaddour^b, Gillian I. Rice^{l,m}, Vinit Upasani^h, Jean-Philippe Herbeuval^b, John A. Reynolds^{g,i,j,k}, Tracy A. Briggs^{l,m}, Ian N. Bruce^{g,i}, Claudia Mauriⁿ, David Isenbergⁿ, Madhvi Menon^{n,t}, David Hunt^o, Benno Schwikowski^{d,e}, Xavier Mariette^p, Stanislas Pol^q, Flore Rozenberg^r, Tineke Cantaert^h, J. Eric Gottenberg^s, Kai Kisand^f, Darragh Duffy^{a,*}

^a Translational Immunology Lab, Institut Pasteur, Paris, France

^b Chimie & Biologie, Modélisation et Immunologie pour la Thérapie (CBMIT), Université de Paris, CNRS, UMR8601, Paris, France

^c Frontiers of Innovation in Research and Education PhD program, CRI doctoral school, Université de Paris, Paris 75005, France

^d Systems Biology Group, Department of Computational Biology and USR 3756, Institut Pasteur and CNRS, Paris 75015, France

^e Sorbonne Université, Complexité du vivant, Paris 75005, France

^f Molecular Pathology, Institute of Biomedicine and Translational Medicine, University of Tartu, Tartu, Estonia

^g Centre for Musculoskeletal Research, Division of Musculoskeletal and Dermatological Sciences, School of Biological Sciences, University of Manchester, Manchester, UK

^h Immunology Unit, Institut Pasteur du Cambodge, Institut Pasteur International Network, Phnom Penh, Cambodia

ⁱ NIHR Manchester Biomedical Research Centre, Manchester University NHS Foundation Trust, Manchester Academic Health Science Centre, The University of Manchester, Manchester, UK

^j Rheumatology Research Group, Institute of Inflammation and Ageing, College of Medical and Dental Sciences, University of Birmingham, Birmingham, UK

^k Rheumatology Department, Sandwell and West Birmingham NHS Trust, Birmingham, UK

^l Division of Evolution and Genomic Sciences, School of Biological Sciences, University of Manchester, Manchester, UK

^m Manchester Centre for Genomic Medicine, St Mary's Hospital, Manchester University Hospitals NHS Foundation Trust, Manchester, UK

ⁿ Centre for Rheumatology Research, Division of Medicine, University College of London, London WC1E 6JF, UK

^o Centre for Genomic and Experimental Medicine, Medical Research Council Institute of Genetics and Molecular Medicine, The University of Edinburgh, Edinburgh, UK

^p Rheumatology, Université Paris-Saclay, Assistance Publique-Hôpitaux de Paris (AP-HP), Hôpital Bicêtre, INSERM UMR1184, Le Kremlin-Bicêtre, France

^q Unité d'Hépatologie, Assistance Publique-Hôpitaux de Paris (AP-HP), Hôpital Cochin, Paris, France

^r Department of Virology, APHP-CUP, Université de Paris, Paris, France

^s Faculté de Médecine de l'Université de Strasbourg, Strasbourg, France

^t Lydia Becker Institute of Immunology and Inflammation, Division of Infection, Immunity & Respiratory Medicine, School of Biological Sciences, University of Manchester, UK

ARTICLE INFO

Keywords:

IFN α subtypes
TLR activation
IFN function
Anti-IFN α autoantibodies
Viral infection
Autoimmunity

ABSTRACT

Type I interferons are essential for host response to viral infections, while dysregulation of their response can result in autoinflammation or autoimmunity. Among IFN α (alpha) responses, 13 subtypes exist that signal through the same receptor, but have been reported to have different effector functions. However, the lack of available tools for discriminating these closely related subtypes, in particular at the protein level, has restricted the study of their differential roles in disease. We developed a digital ELISA with specificity and high sensitivity for the IFN α 2 subtype. Application of this assay, in parallel with our previously described pan-IFN α assay, allowed us to study different IFN α protein responses following cellular stimulation and in diverse patient cohorts. We observed different ratios of IFN α protein responses between viral infection and autoimmune patients. This analysis also revealed a small percentage of autoimmune patients with high IFN α 2 protein measurements but low pan-IFN α measurements. Correlation with an ISG score and functional activity showed that in this small sub group of patients, IFN α 2 protein measurements did not reflect its biological activity. This unusual phenotype was partly explained by the presence of anti-IFN α auto-antibodies in a subset of autoimmune patients. This study reports ultrasensitive assays for the study of IFN α proteins in patient samples and highlights the insights that can be obtained from the use of multiple phenotypic readouts in translational and clinical studies.

* Corresponding author at: Translational Immunology Lab, Institut Pasteur, 25, rue du Dr. Roux, 75724 Paris Cedex 15, France.

E-mail address: darragh.duffy@pasteur.fr (D. Duffy).

<https://doi.org/10.1016/j.cyto.2021.155533>

Received 3 February 2021; Received in revised form 30 March 2021; Accepted 31 March 2021

1043-4666/© 2021 The Author(s). Published by Elsevier Ltd. This is an open access article under the CC BY license (<http://creativecommons.org/licenses/by/4.0/>).

1. Introduction

Type I interferons are essential for host responses to viral infections [1]. Their dysregulation is also implicated in many autoimmune diseases, such as systemic lupus erythematosus (SLE) and primary Sjögren's syndrome (pSS) [2], while their exact role in bacterial infection remains unclear [3]. Within the type I interferon class there are 9 types; IFN α (alpha), IFN β (beta), IFN κ (kappa), IFN ω (omega), IFN δ (delta), IFN ϵ (epsilon), IFN τ (tau), IFN ζ (zeta) and IFN ν (nu) (IFN $\delta/\tau/\zeta/\nu$ not found in humans) that all signal through the IFNAR receptor complex [4]. Furthermore, within the IFN α types there are 13 subtypes that exhibit marked evolutionary differences in terms of selective conservation, suggesting different immunological relevance [5].

Some studies have reported differential functions, at least in terms of anti-viral responses [6–9], but much remains unknown in terms of broader differential activity between the different IFN α subtypes. Furthermore, in autoimmunity, the potential role of different IFN α subtypes is even less clear, despite their strong implication in the pathogenesis of many such diseases [10]. Such studies have been restricted by the high level of sequence homology among the different subtypes, as well as the lack of tools to study them, in particular at the protein level. Indeed, until recently, IFN α protein was challenging to directly measure in human samples, with interferon stimulated genes (ISG) or functional activity used as proxy readouts. This limitation was overcome with the application of Simoa digital ELISA [11], and the use of unique monoclonal antibodies isolated from APECED patients [12] that enabled the detection of all IFN α protein subtypes with more or less equivalent and high sensitivity [13]. Direct measurement of the protein allowed us to identify the cellular sources of pathological IFN α in patients with STING mutations and juvenile dermatomyositis, to be circulating monocytes and pDCs [13] and tissue myoblasts [14], respectively. In contrast in active TB infection, we demonstrated an absence of plasma IFN-I [15], suggesting that the widely reported blood ISG signature most likely reflects signaling in the infected tissue [3].

In this study we adapted the digital ELISA using commercial antibodies specific for IFN α 2 and used both assays to study autoimmune and infected patient cohorts. While both assays correlated well in the majority of patients, discrepancies between the two were observed which revealed interesting clinical observations. In particular, the balance between the results obtained using the two assays was modified by the presence of autoantibodies in some patients and the nature of the TLR that was activated. This provides a starting point for beginning to dissect potential different roles of IFN α subtypes in human disease.

2. Materials and methods

2.1. Patient cohorts

Patients were not specifically enrolled for this study, all quantifications were done on samples from existing clinical cohorts that were previously described: Rodero *et al.* [13], Reynolds *et al.* (LEAP cohort) [16], Bost *et al.* (In review) (ASSESS cohort), Menon *et al.* (In preparation), Sultanik *et al.* [17] (C10-08 cohort) and Upasani *et al.* [18].

The Rodero *et al.* (2017) cohort includes patients with systemic lupus erythematosus (SLE), juvenile SLE (JSLE), connective tissue disease (CTD), retinal vasculopathy with cerebral leukodystrophy (RVCL), juvenile dermatomyositis (JDM), monogenic interferonopathies (MI), and central nervous system (CNS) infections. All samples were collected with informed consent. The study was approved by the Leeds (East) Research Ethics Committee (reference number 10/H1307/132), by the Comité de Protection des Personnes (ID-RCB/EUD RACT:2014-A01017-40), and by the South-East Scotland Research Ethics Committee (0114/SS/0003).

The Lupus Extended Autoimmune Phenotype (LEAP) cohort includes patients with systemic lupus erythematosus (SLE), primary Sjögren's syndrome (pSS), undifferentiated connective tissue disease (UCTD), mixed connective tissue disease (MCTD), systemic sclerosis (SSc) and

idiopathic inflammatory myopathies (IIM). Patients were recruited from Manchester University NHS Foundation Trust and Salford Royal NHS Foundation Trust. Ethical approval was obtained from the Greater Manchester East Research Ethics Committee (13/NW/0564).

The ASSESS national multi-center prospective cohort (Assessment of Systemic complications and Evolution in Sjögren's Syndrome) was set up in 2006 thanks to a grant from the French Ministry of Health. Fifteen centers for autoimmune disease were established to recruit consecutive patients with primary Sjögren's syndrome fulfilling American-European Consensus Criteria (AECG) between 2006 and 2009. The study was approved by the Ethics Committee of Bichat Hospital in 2006. All patients gave their informed written consent. This study was followed for 5 years with the grant of the French Ministry of Health and this study will be extended for 20 years by the French Society of Rheumatology (SFR).

The Menon *et al.* (in preparation) cohort consists of serum samples from 476 SLE patients (mean age 46 ± 15 years, 40 male) recruited at the University College of London. 11 patients with high autoantibody values were studied longitudinally. The ethics committee of the University College London Hospitals National Health Service Trust approved this study. Patients were recruited after obtaining informed consent.

The C10-08 cHCV cohort ($n = 88$) were sampled as part of a prospective study (C10-08) sponsored by the Institut National de la Santé et de la Recherche Médicale (Inserm) and by the Agence Nationale de Recherche sur le Sida et les Hépatites Virales (ANRS-C10-08). Approval of the study was obtained from the French Comité de protection des personnes (CPP IDF II) in 2010, August 2nd, and all patients gave written informed consent. This cohort includes patients with chronic hepatitis C virus infection (genotype is 1 and 4) prior to treatment with either pegylated-IFN α and ribavirin or a direct acting anti-viral (boceprevir or telaprevir).

The Upasani *et al.* [18] cohort includes 115 children (≥ 2 years) who presented with dengue-like symptoms at the Kanta Bopha Hospital in Phnom Penh, Cambodia. Blood samples were obtained within 96 h of fever onset at hospital admittance. Plasmas were tested for presence of dengue virus using a nested RT-qPCR at the Institut Pasteur du Cambodge. Patients were classified according to the WHO 1997 severity criteria upon hospital discharge as dengue fever (DF), dengue haemorrhagic fever (DHF) and dengue shock syndrome (DSS). Ethical approval for the study was obtained from the National Ethics Committee of Health Research of Cambodia. Patients were recruited after obtaining written informed consent. The dengue cohort of this paper includes 56 of these 115 patients, randomly selected. The dengue cohort and the Upasani *et al.* [18] cohort are not statistically different in terms of age (median 10, IQR 6–12 vs median 9, IQR 5–11) and pan-alpha interferon concentrations ($p = 0.536$, Mann-Whitney test), and these two cohorts show similar percentages of female (48% vs 53), DF (82% vs 72), DHF (13% vs 17), DSS (5% vs 9), primary infection (25% vs 17) or secondary infection (75% vs 71) patients.

The viral CNS infection cohort ($n = 18$) includes all Rodero *et al.* [13] related patients whose diagnosis was mainly viral meningitis or viral encephalitis. Details are shown on Table S1.

For this study, samples were categorized based on clinical diagnosis and are summarized in Table 1. All SLE and JSLE samples from Rodero *et al.* [13] ($n = 56$) and LEAP cohorts ($n = 39$) were combined here to form the SLE cohort. All anti-IFN α positive and a randomly selected group of anti-IFN α negative SLE patients with a similar size ($n = 111$) were added from Menon *et al.* (in preparation) cohort to this SLE cohort ($n = 206$). All CTD samples from Rodero *et al.* [13] cohort ($n = 19$) and UCTD and MCTD samples from LEAP cohort ($n = 33$) were merged here to form the CTD cohort ($n = 52$). All pSS samples from LEAP cohort ($n = 12$) and all samples from ASSESS cohort ($n = 380$) were merged to form the pSS cohort ($n = 392$). Longitudinal SLE samples ($n = 11$) from Menon *et al.* (in preparation) study were studied in a different part. Patient numbers, gender and age are shown in Table 1 for each cohort.

Table 1

Demographic characteristics of each cohort. Patient number, gender, age and diagnosis for each cohort. Data are shown as the n (%) or median (IRQ). LEAP (lupus extended autoimmune phenotype) cohort: see Reynolds et al. [16]. Rodero et al. cohort: see reference 13. ASSESS (assessment of systemic complications (signs) and evolution in Sjögren's syndrome) cohort: see Bost et al. (In review). Menon et al. cohort: paper in preparation. C10-08 cohort: see Sultanik et al. [17]. Upasani et al. cohort: see reference 18. MCTD: mixed CTD. UCDT: undifferentiated CTD. pSS: primary Sjögren's syndrome. SLE: systemic lupus erythematosus. CTD: connective tissue disease. JSLE: juvenile SLE. CNS: central nervous system. cHCV: chronic hepatitis C virus infection. DF: dengue fever. DHF: dengue haemorrhagic fever. DSS: dengue shock syndrome.

Cohorts used in this study (patients included only):				
Cohort	Patient number	Gender, female	Age	Diagnosis
LEAP	84	79 (94%)	49 (36–57)	MCTD: 6 (7%) UCTD: 27 (32%) pSS: 12 (14%) SLE: 39 (46%) CTD: 19 (20%)
Rodero et al. (2017)	93	76 (82%)	42 (26–54)	JSLE: 6 (6%) SLE: 50 (54%) Viral CNS infection: 18 (19%) pSS: 380 (100%)
ASSESS	380	353 (93%)	59 (51–67)	SLE: 111 (100%)
Menon et al. (in preparation)	111	100 (90%)	53 (40–63)	cHCV: 88 (100%)
C10-08	88	41 (47%)	58 (50–65)	DF: 46 (82%) DHF: 7 (13%) DSS: 3 (5%)
Upasani et al. (2020)	56	27 (48%)	10 (6–12)	
Clinical diagnosis cohorts:				
Cohort	Patient number	Gender, female	Age	
CTD	52	48 (92%)	48 (33–53)	
pSS	392	365 (93%)	58 (51–67)	
SLE	206	189 (92%)	50 (38–60)	
cHCV	88	41 (47%)	58 (50–65)	
Dengue	56	27 (48%)	10 (6–12)	
Viral CNS infection	18	6 (33%)	2 (<1–31)	

2.2. Healthy donors

Fresh whole blood was collected into sodium heparin tubes from healthy French volunteers enrolled at the Clinical Investigation and Access to BioResources (ICAREB) platform (Center for Translational Research, Institut Pasteur, Paris, France). These donors were part of the CoSImmGen cohort (NCT03925272). The biobank activity of this platform is certified ISO 9001 and NFS 96–900. Written informed consent was obtained from all study participants. Fresh whole blood was diluted 1:3 with RPMI medium 1640 (1X) + GlutaMAX into 5 mL Polystyrene round-bottom tube. Diluted whole blood was either left without any stimulant to mimic the Null condition or stimulated with LPS (LPS-EB ultrapure InvivoGen) at the final concentration of 10 ng/mL, Poly(I:C) (HMW Vaccigrade InvivoGen) at the final concentration of 20 µg/mL, R848 (Vaccigrade InvivoGen) at the final concentration of 1 µM. Tubes were vortexed and incubated at 37 °C, 5% CO₂ for 22 h. Supernatants were collected and stored at –20 °C until use.

2.3. pDC isolation and stimulation

Blood from healthy donors was obtained from “Etablissement Français du Sang” (convention # 07/CABANEL/106; Paris, France). Experimental procedures with human blood were done according to the

European Union guidelines and the Declaration of Helsinki. Human peripheral blood mononuclear cells (PBMCs) were isolated by density centrifugation from peripheral blood leukocyte separation medium (STEMCELL Technologies). *In vitro* experiments were performed using human plasmacytoid dendritic cells (pDCs) purified from PBMCs by negative selection with the EasySep Human Plasmacytoid DC enrichment kit (STEMCELL Technologies). pDCs were cultured in RPMI 1640 (Invitrogen, Gaithersburg, MD) containing 10% heat-inactivated fetal bovine serum and 1 mM glutamine (Hyclone, Logan, UT). For stimulation experiments purified pDCs were seeded at $1 \times 10^5/100 \mu\text{L}$. Cells were stimulated for 16 h with the TLR7/TLR8 agonist Resiquimod (R848; Invivogen) at 5 µg/mL or the TLR4 agonist lipopolysaccharide (LPS; Invivogen) at 100 ng/mL or the TLR9 agonist class A CpG ODNs (CpG-A; Invivogen) at 5 µM or the STING agonist cGAMP (Invivogen) or the TLR3 agonist polyinosinic-polycytidylic acid (poly(I:C); Invivogen) at 5 µg/mL. Supernatants were then collected for IFN α detection.

2.4. Sample preparation for digital-ELISA assays

All serum and plasma samples were thawed and centrifuged at 10,000g, +4°C for 10 min. Supernatants were diluted in the Detector / Sample Diluent (Quanterix) for pan-IFN α or IFN α 2 quantification, then incubated one hour at room temperature before analysis. Biological samples were diluted from 1/3 to 1/300 depending on the amount of material available and to avoid saturation. NP40 was added in the Detector / Sample Diluent used for cHCV, dengue or viral CNS infection samples at a final concentration of 0.5% (v/v) to inactivate viruses.

2.5. Calibrators and pure recombinant IFN α subtypes

Recombinant IFN α 1, IFN α 1 (Val114), IFN α 4a, IFN α 4b, IFN α 5, IFN α 6, IFN α 7, IFN α 8, IFN α 10, IFN α 14, IFN α 16, IFN α 17, and IFN α 21 were purchased from PBL Assay Science. Recombinant IFN α 2c was purchased from eBioscience. Recombinant IFN β , IFN λ 1, IFN λ 2, IFN ω and IFN γ were purchased from PeproTech.

2.6. Pan-IFN α digital ELISA assay

The Simoa pan-IFN α assay was developed using the Quanterix Homebrew kit according to the manufacturer's instructions and using two autoantibodies specific for IFN α isolated and cloned from two APS1/APECED patients. The 8H1 antibody clone was used as a capture antibody after coating on paramagnetic beads (0.3 mg/mL), and the 12H5 was biotinylated (biotin/antibody ratio = 30/1) and used as the detector at a concentration of 0.3µg/mL. The SBG revelation enzyme concentration was 150 pM. Recombinant IFN α 17 was used as calibrator. The limit of detection was calculated by the mean value of all blank runs + 2SD after log conversion. The assay is fully described in Rodero et al. [13] and a video presenting all the steps is shown in Llibre et al [19].

2.7. IFN α 2 digital ELISA assay

The Simoa IFN α 2 assay was also developed using the Quanterix Homebrew kit. The BMS216C (eBioscience) antibody clone was used as a capture antibody after coating on paramagnetic beads (0.3 mg/mL), and the BMS216BK already biotinylated antibody clone was used as the detector at a concentration of 0.3µg/mL. The SBG revelation enzyme concentration was 150 pM. Recombinant IFN α 2c was used as calibrator. The limit of detection was calculated by the mean value of all blank runs + 2SD after log conversion.

2.8. ISG score determination

For SLE and CTD patients ISG score was calculated by qPCR as previously described using six ISG genes (Rice et al. [20]). Blood was collected in PAXgene tubes (PreAnalytix), and total RNA was extracted

using a PAXgene (PreAnalytix) RNA isolation kit. RNA concentration was assessed by fluorimetric analysis. After DNase treatment, RNA was converted into cDNA with the High Capacity cDNA reverse transcriptase kit (Qiagen). Quantitative reverse transcription polymerase chain reaction (RT-qPCR) analysis was performed using the TaqMan Universal PCR Master Mix (Applied Biosystems) and cDNA derived from 40 ng total RNA. Using TaqMan probes for IFI27 (Hs01086370_m1), IFI44L (Hs00199115_m1), IFIT1 (Hs00356631_g1), ISG15 (Hs00192713_m1), RSAD2 (Hs01057264_m1), and SIG LEC1 (Hs00988063_m1), the relative abundance of each target transcript was normalized to the expression level of HPRT1 (Hs03929096_g1) and 18S (Hs99999001_s1) and assessed with the Applied Biosystems StepOne Software v2.1 and DataAssist Software v.3.01. For each of the six probes, individual (patient and control) data were expressed relative to a single calibrator (control C25). The median fold change of the six ISGs, when compared with the median of the combined 29 healthy controls, was used to create an IFN score for each patient. RQ is equal to $2^{-\Delta Ct}$ (i.e., the normalized fold change relative to a control). All patients were selected for this analysis, except the ASSESS ones for which the protocol was different.

For pSS patients the ISG-score was determined from microarray data. After validation of the RNA quality with Bioanalyzer 2100 (using Agilent RNA6000 nano chip kit), 75 ng of total RNA was reverse transcribed using the GeneChip® WT Plus Reagent Kit (Affymetrix) without globin mRNA reduction. Briefly, the resulting double-stranded cDNA was used for *in vitro* transcription with T7 RNA polymerase (all these steps are included in the WT cDNA synthesis and amplification kit of Affymetrix). After purification according to Affymetrix's protocol, 5.5 µg of Sens Target DNA were fragmented and biotin-labelled. After control of fragmentation using Bioanalyzer 2100, cDNA was then hybridized to GeneChip® Clariom S Human (Affymetrix) at 45 °C for 17 h. After overnight hybridization, chips were washed on the GeneChip Fluidics Station 450 following specific protocols (Affymetrix) and scanned using the GCS3000 7G. The scanned images were then analyzed with Expression Console software (Affymetrix) to obtain raw data (.cel files) and Quality Control metrics. Computational analyses were performed on R 3.4.3. Microarray data were loaded and normalised using the oligo package. Briefly .cel files were loaded using the read.celfiles() functions and normalised using the Robust Multi Array algorithm implemented in the rma() function with default parameters. Quality of data normalization was checked through visual inspection of intensity distribution across chips. Microarrays probes were annotated using the clariomshumanhtranscriptcluster.db package and if several probes were mapped to the same gene, the probe with the highest coefficient of variation was selected. Then, the ISG score for each patient was calculated as the median of normalized data available for the same genes, i.e. IFI27, IFI44L, IFIT1, ISG15, RSAD2 and SIG LEC1 as previously defined (Rice et al. [20]).

2.9. IFN-activity determination

Type I IFN activity was measured by determining the cytopathic reduction (i.e., protection of Madin–Darby bovine kidney (MDBK) cells against cell death after infection with vesicular stomatitis virus) afforded by patient serum. A reference of human IFN α , standardized against the National Institutes of Health reference Ga 023–902–530, was included with each titration. IFN α activity in normal healthy serum is < 2 IU/mL. Patients were selected randomly from the SLE, CTD and pSS cohorts to equilibrate the number of results in each cohort and at each IFN α 17/ α 2c protein ratio (n = 113).

2.10. Competition assays

SLE patient plasma samples or pure recombinant IFN α subtypes were diluted with Detector / Sample Diluent (Quanterix) and preincubated with 50 µg/mL of the IFN α capture antibody 8H1 or BMS216C (eBio-science) for 30 min at room temperature before Simoa analysis.

2.11. Anti-IFN α autoantibodies quantification

Anti-IFN α (1,2,8,21) and anti-IFN α (4,5,6,7) quantifications were done in each LEAP SLE, LEAP CTD and ASSESS Sjögren's patients cohorts from a similar restricted number of samples, randomly selected (n = 113). Autoantibodies against IFN α were measured with luciferase based immunoprecipitation assay (LIPS) as described previously (Meyer et al.¹²). IFN α subtype sequences were cloned into modified pPK-CMV-F4 fusion vector (PromoCell GmbH, Germany) where Firefly luciferase was substituted in the plasmid for NanoLuc luciferase (Promega, USA), transfected to HEK293 cells and IFN α -luciferase fusion proteins collected with tissue culture supernatant. 1×10^6 luminescence units (LU) of IFN α 1, IFN α 2, IFN α 8 and IFN α 21 fusion proteins were combined to one IP reaction (pool 1), and IFN α 4, IFN α 5, IFN α 6 and IFN α 7 fusion proteins to another (pool 2). Serum samples were incubated with Protein G Agarose beads (Exalpha Biologicals, USA) at room temperature for 1 h in 96-well microfilter plate (Merck Millipore, Germany) before the antigen mix was added for another hour. After washing the plate with vacuum system, Nano-Glo® Luciferase Assay Reagent was added (Promega, USA). Luminescence intensity was measured by VICTOR X Multilabel Plate Reader (PerkinElmer Life Sciences, USA). The results were expressed in arbitrary units (AU) representing fold over the mean of the negative control samples. The cut-off was set at 2.0 AU. Anti-IFN α 8 and anti-IFN α 2 quantifications were done for five patients with high autoantibody values studied longitudinally. The previous protocol was employed using only the IFN α 8 and IFN α 2 fusion proteins. Serial dilutions from serum samples were co-incubated with fixed concentrations of these antigens. IC50 was calculated based on the dose–response curve. This is the dilution factor that halves the signal or reduces IFN activity 50% from its maximum.

2.12. Statistical analyses

GraphPad Prism was used for statistical analysis. A Mann-Whitney test was used to test for differences induced by the two buffers used to treat samples. ANOVA tests (Kruskal–Wallis) with Dunn's post testing for multiple comparisons were used to test for differences between patients groups, or stimulation groups. *p < 0.05; **p < 0.01; ***p < 0.001; ****p < 0.0001. A Chi square test was used to characterize the differences between two distributions of results. For all analyses, p values < 0.05 were considered statistically significant. Median and 95% confidence interval were reported. Spearman correlations are used to compare the two IFN α assays.

2.13. Data availability

All available patient data is shown in [Supplementary Table S1](#).

3. Results

3.1. Comparison of IFN α 2 and pan-IFN α digital ELISA assays

To enable the study of IFN α protein subtypes we developed a Simoa digital ELISA utilizing a monoclonal antibody (mAb) pair specific for IFN α 2. This assay had a limit of detection (LOD) of 1 fg/mL and no cross-reactivity for IFN β , IFN λ 1, IFN λ 2, IFN ω , and IFN γ (Fig. 1a). This level of sensitivity, and lack of cross-reactivity, were similar to our previously described pan-IFN α Simoa assay that utilized mAbs isolated from APECED patients (Fig. 1b). We also tested the reactivity of the new IFN α 2 assay for all 13 (and the natural variant IFN α 1/Val114) IFN α subtypes which revealed differing levels of specificity, with the highest specificity for IFN α 2 and IFN α 6 (Fig. 1c). This was in contrast to pan-IFN α assay which has equally high specificity for all IFN α subtypes, with the exception of IFN α 2 (Fig. 1d).

To explore this differential specificity between the two assays for the IFN α subtypes, we tested each of the 13 (and the natural variant IFN α 1/

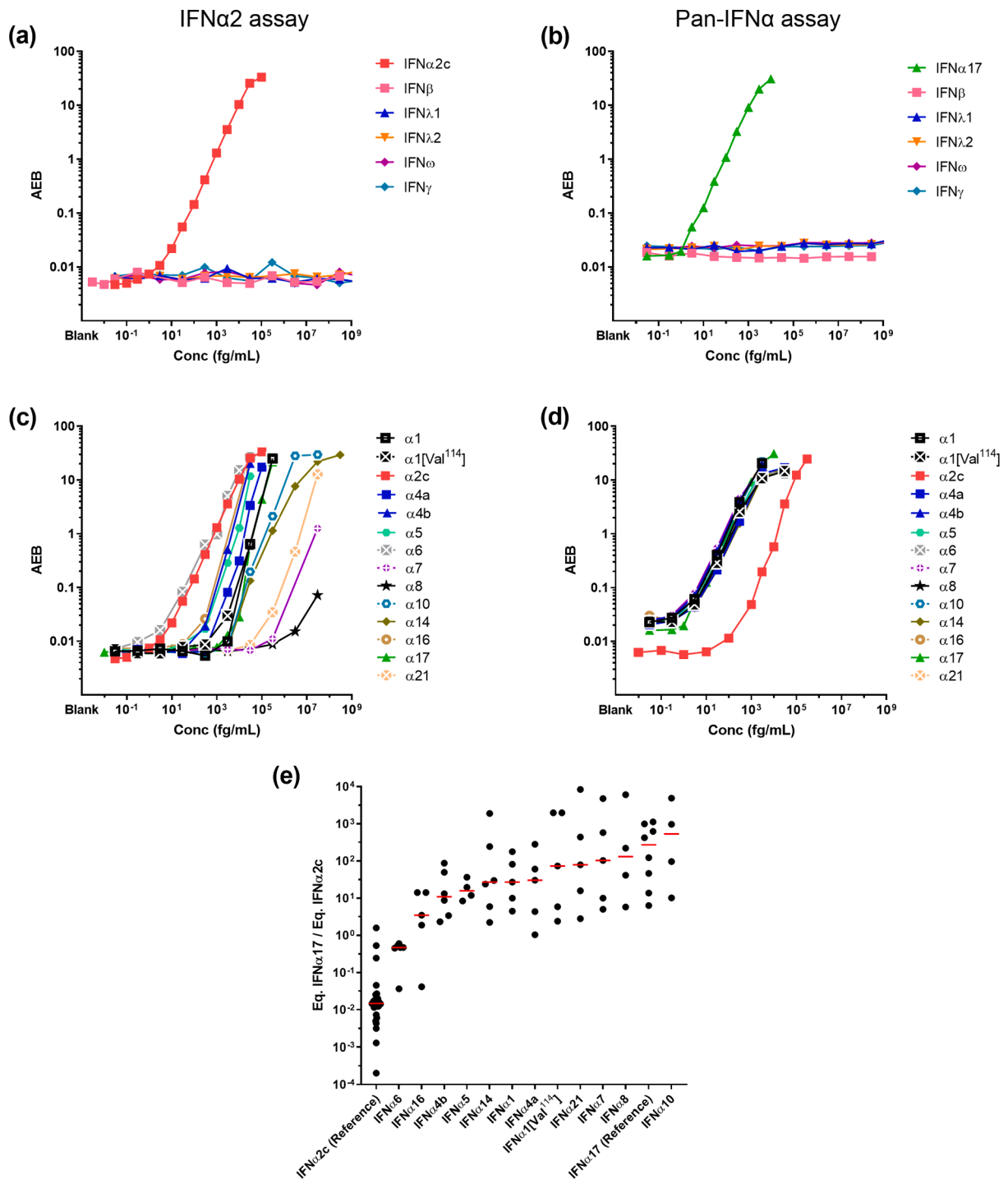


Fig. 1. Digital ELISAs to study IFN α subtypes. Response (Average Enzyme per Bead) of the IFN α 2 assay (a) and pan-IFN α (b) at different concentrations for the recombinant proteins IFN β , IFN λ , IFN ω and IFN γ . Response (Average Enzyme per Bead) of the IFN α 2 assay (c) and pan-IFN α (d) at different concentrations for recombinant IFN α subtypes and the natural variant IFN α 1(Val114). (e) The IFN α 17/IFN α 2c ratio for different concentrations of recombinant IFN α subtypes and the natural variant IFN α 1(Val114) as measured by both the IFN α 2 assay and pan-IFN α assays.

Val114) IFN α subtypes at different concentrations, from no response to saturation, and plotted the ratio of the results obtained in the two assays (Fig. 1e). Results are expressed as concentrations after calibration, to IFN α 17 for the pan-IFN α assay and IFN α 2 for the IFN α 2 assay. This range of values therefore captures the possible biological distributions of IFN α 17/ α 2, with ratios ranging from 10^4 to 2×10^{-4} . Recombinant IFN α 2 presented a low ratio as it was recognized with high specificity by the IFN α 2 assay, but with low specificity by the pan-IFN α assay. IFN α 6 had an intermediate ratio as it was recognized equally well by both assays,

and all other subtypes presented a ratio higher than 1 due to greater specificity with the pan-IFN α assay.

3.2. TLR activation can modify the balance of IFN α protein subtypes.

To test the potential biological relevance of these observations we tested the hypothesis that different TLR stimulation could modify the balance of IFN α subtypes. To do this, we stimulated whole blood and purified plasmacytoid Dendritic Cells (pDCs) (the main IFN α producing

cell type) with different TLR ligands and quantified IFN α in the supernatant with both assays. Whole blood from healthy donors was stimulated with LPS (TLR4), Poly(I:C) (TLR3), and R848 (TLR7/8) plus a Null control for 22 h using concentrations previously defined to be within the linear range of response [21]. Response with both assays correlated extremely well as expected ($R_s = 0.96$, $p < 0.0001$ Spearman test), with R848 showing the strongest induction followed by equivalent responses for LPS and Poly(I:C) (Fig. 2a). Purified pDCs from healthy donors were stimulated with relevant ligands for TLR9, their main innate sensor, namely CpG-A and cGAMP, as well as LPS (TLR4), Poly(I:C) (TLR3), and R848 (TLR7/8). Strong responses were observed after stimulation with all TLR9 agonists and R848, with a good positive correlation between both assays ($R_s = 0.79$, $p < 0.0001$ Spearman test) (Fig. 2b). A high background (10^4 fg/mL) is observed using the IFN α_2 assay, probably due to non-specific cell activation due to experimental manipulation. Because this non-specific activation could modify the results, we next calculated the IFN α_{17}/α_2 ratio between the different stimulation conditions for samples that were effectively stimulated by our molecules (significant difference and fold-induction compared to non-stimulated condition). For whole blood we observed a significantly lower ratio ($p = 0.0008$) between TLR7/8 ligands and TLR4 and TLR3 ligands (Fig. 2c). For pDCs we observed a significantly ($p = 0.0229$) higher ratio between TLR9 and TLR7/8 ligands (Fig. 2d). Therefore, in both whole blood and pDC responses to stimulation our assays could detect

differential induction of IFN α protein subtypes depending on the TLR pathway targeted validating the biological relevance of this approach.

3.3. Comparison of IFN α subtype protein ratios in autoimmune and infection.

To test the potential clinical relevance of the IFN α_{17}/α_2 ratio in disease we applied both IFN α_2 and pan-IFN α assays to plasma from patients with acute (dengue and viral central nervous system infection) or chronic (HCV) viral infection, as well as autoimmune conditions; systemic lupus erythematosus (SLE), connective tissue disease (CTD), and primary Sjögren's Syndrome (pSS), all pathologies previously shown to be associated with increased IFN signaling. Both assays showed an overall strong and positive correlation ($R_s = 0.6198$, $p < 0.0001$, Spearman test), however there were certain patients from both chronic viral infection and autoimmune groups whose IFN α results did not correlate well between the two assays (Fig. 3a). To explore this further we examined the IFN α ratio as previously described. Patients with acute viral diseases – dengue or CNS infections – showed the narrowest distribution range of IFN α_{17}/α_2 ratios with intermediate medians at 0.6 and 1.0 respectively (Fig. 3b). In contrast, patients chronically infected with HCV showed a wider distribution range of IFN α_{17}/α_2 ratios from 2×10^{-4} to 10^2 and a median of 2.6 suggesting the presence of multiple IFN α subtypes. Strikingly the three autoimmune

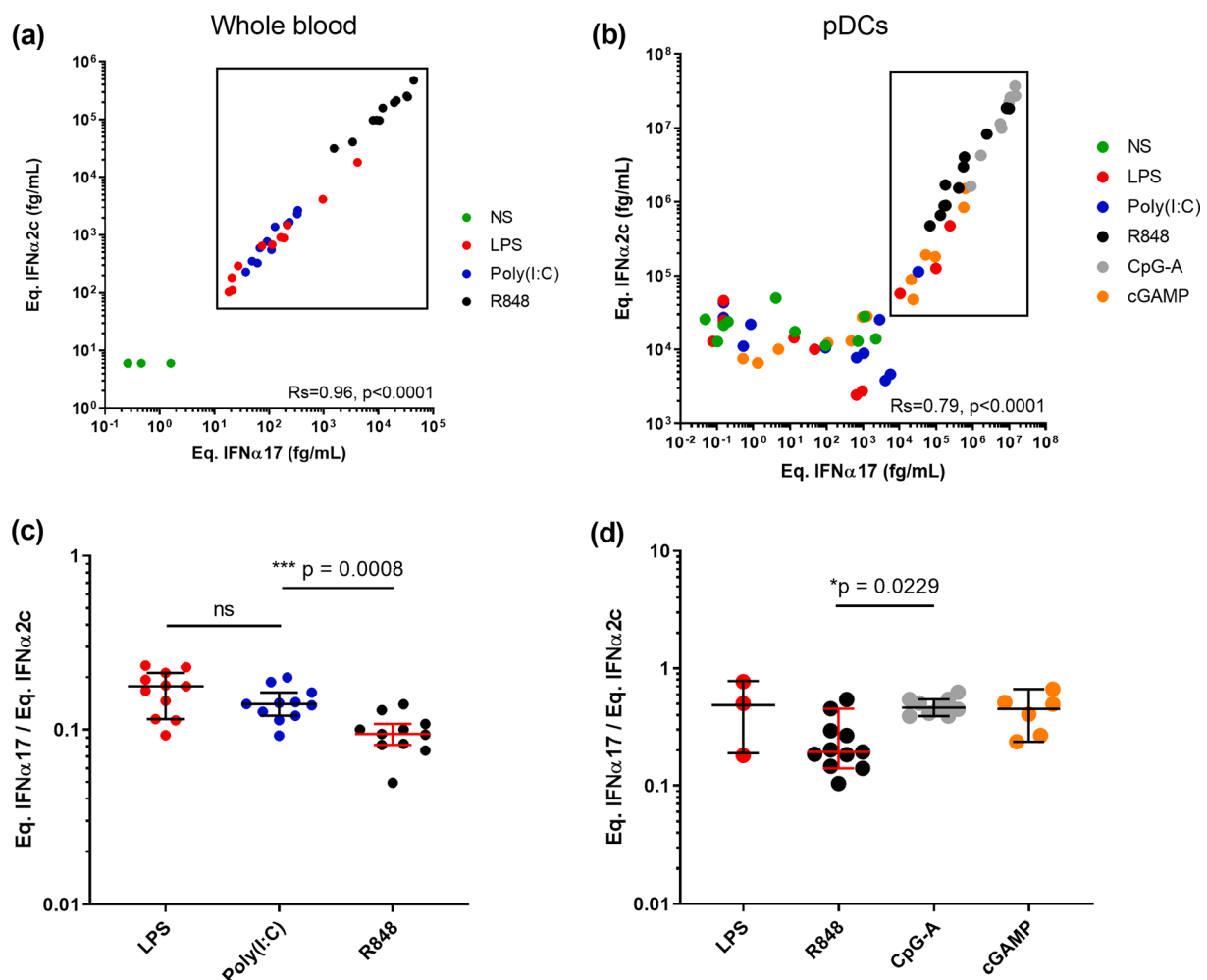


Fig. 2. TLR activation can modify the IFN α subtype balance. IFN α concentrations obtained using the IFN α_2 and pan-IFN α assays after (a) whole blood stimulation with LPS (TLR4), Poly(I:C) (TLR3) or R848 (TLR7/8) and (b) pDC stimulation with LPS, Poly(I:C), R848, CpG-A (TLR9) or cGAMP (TLR9). Comparison of the IFN α_{17}/α_2 protein ratios obtained from (c) whole blood and (d) pDC stimulation with different agonists. Kruskal-Wallis test with Dunn's correction for multiple comparisons and Spearman correlations are reported.

cohorts all showed a similar wide distribution range with median values from 0.46 to 0.82. Intriguingly the autoimmune cohorts also revealed interesting sub-groups of outlier individuals with extremely low IFN α 17/ α 2 ratios below 2×10^{-4} . These represented 3% of the total patients tested. A Kruskal–Wallis test with Dunn’s post testing for multiple comparisons revealed significant differences between the SLE patients and pSS and cHCV patients, with a greater presence of low values in patients with autoimmune diseases suggesting a higher proportion of IFN α 2 protein. These results collectively suggest that the level of disease complexity could explain the scale of the ratio distribution.

3.4. Patients with extremely low IFN α 17/ α 2 protein ratio display reduced IFN signaling and function

The identification of SLE, CTD and pSS patients with an IFN α 17/ α 2 ratio below 2×10^{-4} was intriguing, as results with recombinant molecules showed the extreme low probability of this phenotype occurring (Fig. 1e). Our SLE, CTD and pSS patient cohorts contained respectively 12/206 (5.8%), 6/52 (12%) and 6/392 (1.5%) samples with this phenotype (Fig. 4a, d, g). To examine a potential functional relevance for this abnormal ratio we plotted an interferon stimulated gene (ISG) score calculated by qPCR or microarray (previously described) against

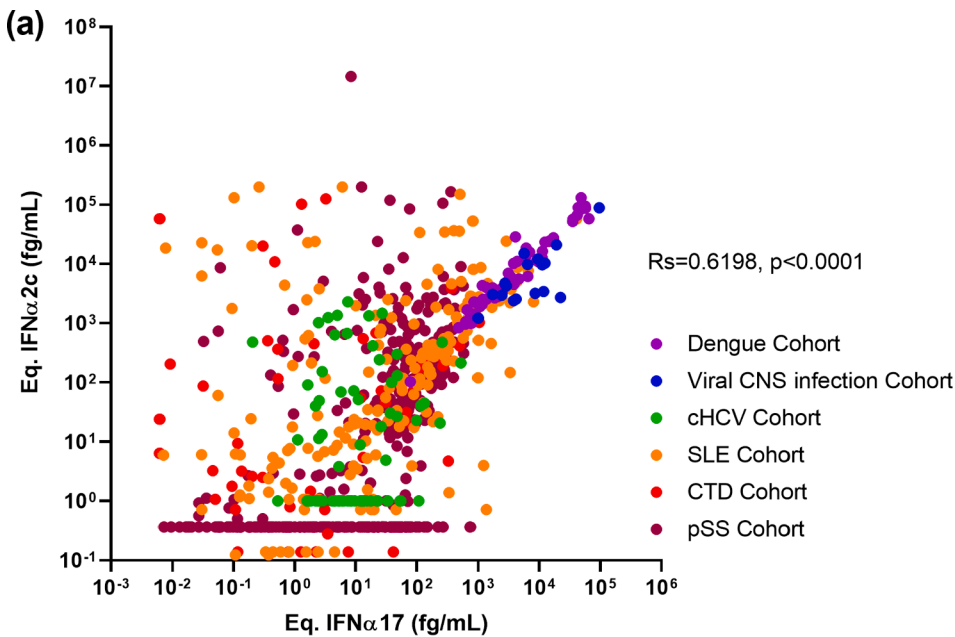
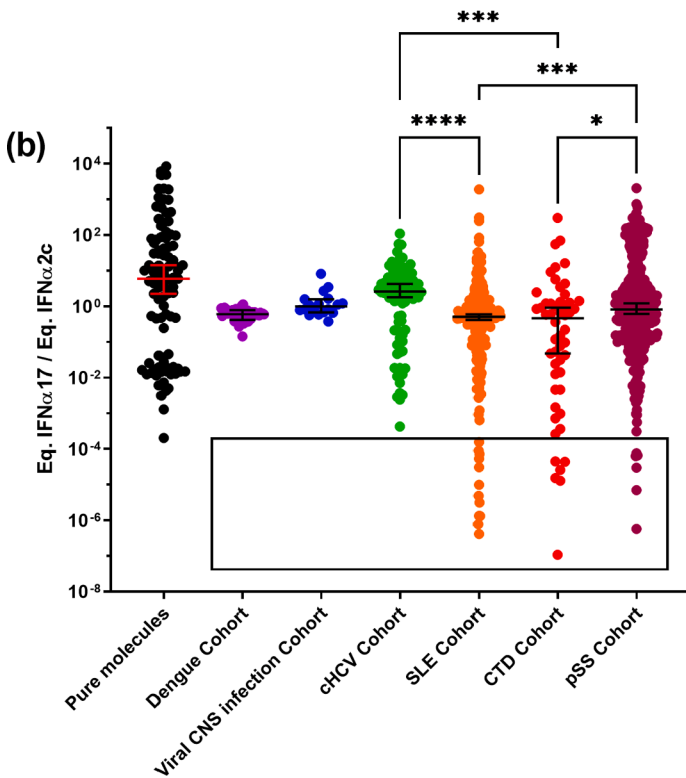


Fig. 3. IFN α subtype protein ratios in autoimmune and infection. IFN α concentrations obtained using the IFN α 2 and pan-IFN α assays in plasma samples from patients with acute dengue infection, chronic HCV infection (cHCV), systemic lupus erythematosus (SLE), connective tissue disease (CTD), and primary Sjögren’s syndrome (pSS). Values for viral central nervous system (CNS) infections are obtained from cerebrospinal fluid samples (a). The IFN α 17/IFN α 2c ratio as measured by both the IFN α 2 and pan-IFN α assays for different concentrations of recombinant IFN α subtypes (left) and for the same patient samples (b). Kruskal–Wallis test with Dunn’s correction for multiple comparisons and Spearman correlations are reported.



the individual equivalent IFN α 17 (Fig. 4b, e and h) and IFN α 2c (Fig. 4c, f, i) concentrations. This analysis revealed that for patients with low IFN α 17/ α 2 ratios (red dots), the pan-IFN α value positively correlated as expected with the ISG score, and in line with other patients (blue dots). In contrast, these patients showed abnormally low ISG scores in regard to their IFN α 2 results (orange dots). This suggested that in certain patients the IFN α 2 protein value did not well reflect *in vivo* activity. To further test this hypothesis, we performed an IFN cytopathic assay on a subset of samples selected randomly from each cohort and at each IFN α 17/ α 2c protein ratio. This revealed that patients with extremely low IFN α 17/ α 2 ratios, also had low IFN activity (Fig. 4j and 4 k), despite these samples having apparent high IFN α 2 protein concentrations.

3.5. Extremely low IFN α 17/ α 2 protein ratio is not due to non-specific effects

A possible technical explanation for these unusual observations was non-specific binding within the assays. To test this hypothesis, we re-analyzed a series of 32 SLE samples in which the proportion of samples showing extremely low IFN α 17/ α 2 ratios was increased in an assay buffer (Buffer B, Quanterix) specifically developed for low background. We have previously shown that this buffer successfully suppresses non-specific binding in an IFN β assay [15]. This revealed identical results (no difference between the buffer groups, $p = 0.1103$, Fig S1), and moreover samples with a low IFN α 17/ α 2 protein ratio maintained this phenotype irrespective of the buffer used (surrounded points), indicating that the phenotype was not due to non-specific binding.

3.6. Auto-antibodies against IFN α can explain the abnormal IFN α subtype ratios

A potential explanation for the extreme IFN α 17/ α 2 ratio is the presence of auto-antibodies, which have been reported to develop against cytokines in autoimmune patients. To test this possibility, we performed a series of *in vitro* experiments. The addition of the 8H1 pan-alpha capture antibody in pure IFN α 17 solutions at different concentrations reduces the IFN α 17/ α 2 ratio (Fig. 5a). The anti-IFN α 2c capture antibody produces no effect in these solutions but, added into IFN α 2c solutions, the antibody increases the ratio (Fig. 5b). The addition of 8H1 in a selection of five SLE samples reduces the IFN α 17/ α 2 ratio (Fig. 5c). This demonstrates that the presence of anti-IFN α auto-antibodies in biological samples could modify the ratio.

Therefore, we tested SLE patients for auto-antibodies against IFN α (subtypes 1,2,4,5,6,7,8 and 21) in their serum. A comparison of the auto-antibody negative and positive patients using the Chi square test revealed a higher proportion of extremely low IFN α 17/ α 2 ratios in the anti-IFN α positive group supporting this hypothesis (Fig. 5d). We next examined SLE patients for whom longitudinal sampling was available over multiple years, which revealed interesting inter-patient variability. Strongly supporting our hypothesis for the role of anti-IFN α auto-antibodies, certain patients showed continuous high levels of IFN α 2 and initial high levels of pan-IFN α that suddenly dropped to undetectable concentrations. Strikingly these sudden undetectable pan-IFN α concentrations occur in parallel to detectable presence of auto-antibodies against IFN α 2 and IFN α 8. Two patients (Fig. 5e and f) out of 11 patients examined showed this pattern of high IFN α 2, and low pan-IFN α , in the presence of anti-IFN α autoantibodies. One other patient with high longitudinal anti-IFN α auto-antibodies did not have elevated levels of IFN α protein at any time point examined (Fig S2). The other eight patients showed lower anti-IFN α auto-antibodies concentrations. Finally, we tested the LEAP SLE, the LEAP CTD and the ASSESS pSS cohorts for anti-IFN α (1,2,8,21) and anti-IFN α (4,5,6,7) autoantibodies to estimate the frequency of this phenotype. 12% of the SLE and CTD patients, and 6.3% of the pSS patients produce anti-IFN α auto-antibodies (Fig. 5g).

4. Discussion

Type I interferons are essential for anti-viral immunity as recently highlighted in studies of severe COVID-19 disease [22–23]. These studies and others have highlighted the need to directly quantify the cytokine protein in patient samples, which has been made possible by the recent development of digital ELISA [11]. However new tools to differentiate the diverse IFN α subtypes are required to further our understanding of their potential differential functions. We illustrate here how two complementary anti-IFN α assays can be used in tandem to reveal differences in IFN α subtype biology. This included subtle but significant differences in subtype expression between acute and chronic viral infection, and autoimmune diseases, and also after TLR stimulation of whole blood and isolated pDCs. However, our results also reveal discrepancies that can occur depending on the specificity of the monoclonal antibodies used.

In our originally described Simoa pan-IFN α assay [13], 8H1 and 12H5 antibody clones were selected because of their ability to quantify all IFN alpha subtypes. Isolated from APECED patients [12], these mAbs also have extremely high affinity and neutralizing capacity making them good candidates for therapeutic use. These attributes help to explain the good correlations observed between results with this assay and ISG scores and IFN-activity across all patient groups. In contrast, the BMS216C and BMS216BK antibody clones used in the IFN α 2 assay were developed in mice for ELISA applications. As such they recognize human-characteristic epitopes on IFN α molecules, that are likely distinct from the functional binding sites. As a result, we observed lower correlations between IFN α 2c concentrations measured with this assay and ISG score or IFN-activity. In support of these hypotheses, we compared the amino acid sequences and three-dimensional structures published online in the PDB database (www.rcsb.org) with the reactivity of all IFN molecules we tested in our two assays. From this, we estimated the pan-alpha assay epitope to be the ¹⁰⁰MQEVLG sequence in the IFN α 17 molecule, and the IFN α 2 assay epitope to be the ¹¹⁰LMKED sequence in the IFN α 2 molecule. Akabayov *et al.* [24] previously determined the IFN α 2 amino-acids implicated in binding with the IFNAR1 receptor. From this, our estimated pan-IFN α epitope, but not the predicted IFN α 2 epitope, includes a high concentration of IFNAR1 receptor binding amino-acids. These observations are consistent with the fact that the pan-IFN α assay uses neutralizing antibodies, but not the IFN α 2 assay. An alternative explanation for the weaker correlation between ISG and the IFN α 2 assay could be lower ISG induction by IFN α 2 compared to the other subtypes but existing literature does not support such strong differences [25]. Alternative explanations could include potential inter-individual differences due to *in vivo* kinetics of response, leukocyte composition, or unidentified post-translational modifications. However, the epitope considerations could also explain the results observed in longitudinal patients, where autoantibodies against IFN α 8 may compete with the pan-IFN α antibodies for the functional epitopes to reduce the IFN α concentrations measured. In contrast, the autoantibodies may not block the epitopes recognized by the IFN α 2 assay resulting in no modification of the IFN α 2 concentrations measured. This implicates that autoantibodies have a neutralizing efficiency, a hypothesis that could be verified measuring ISG score or IFN-activity in these longitudinal samples.

Autoimmune disorders are well known to induce production of autoantibodies [26]. Nevertheless, their presence can be detrimental in cases of acute viral infection where type I interferon responses are crucial for host protection, as recently demonstrated for COVID-19 [23]. We observed anti-IFN α autoantibody positivity in 12% of SLE and CTD groups, and 6% in the pSS group. Gupta *et al.* [27] previously quantified 11% in SLE patients and 9% in pSS patients which is in line with our results. Questions remain on differential and overlapping specificities of the IFN α auto-antibodies for the 13 IFN α subtypes, which are also likely to be heterogenous between individuals. Additional studies with well characterized assays will be required to address this relevant question.

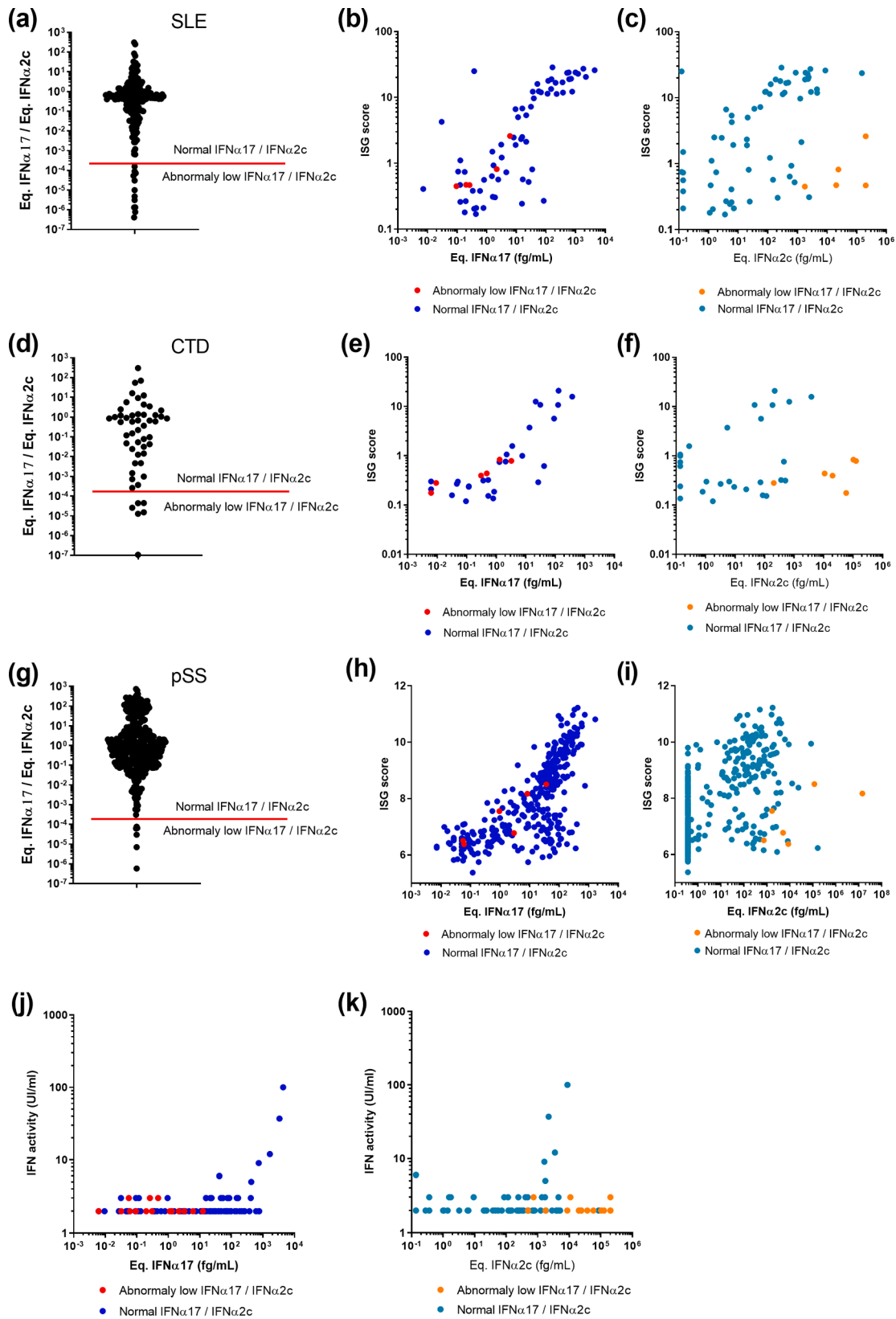


Fig. 4. Integration of IFN α 17/ α 2 protein ratios with ISG score and functional activity. IFN α 17/ α 2 protein ratios obtained from samples of patients with (a) SLE, (d) CTD and (g) pSS. The red bar indicates the lower IFN α 17/ α 2 protein ratio using pure molecules. Correlation of ISG score with pan-IFN α assay (b, e, h) or IFN α 2 assay results (c, f, i) for same patients. Correlation of IFN functional activity with pan-IFN α assay (j) or IFN α 2 assay results (k) for same patients. Patients with an IFN α 17/ α 2 protein ratio threshold above the $2 \cdot 10^{-4}$ cut off are in blue, those below in red.

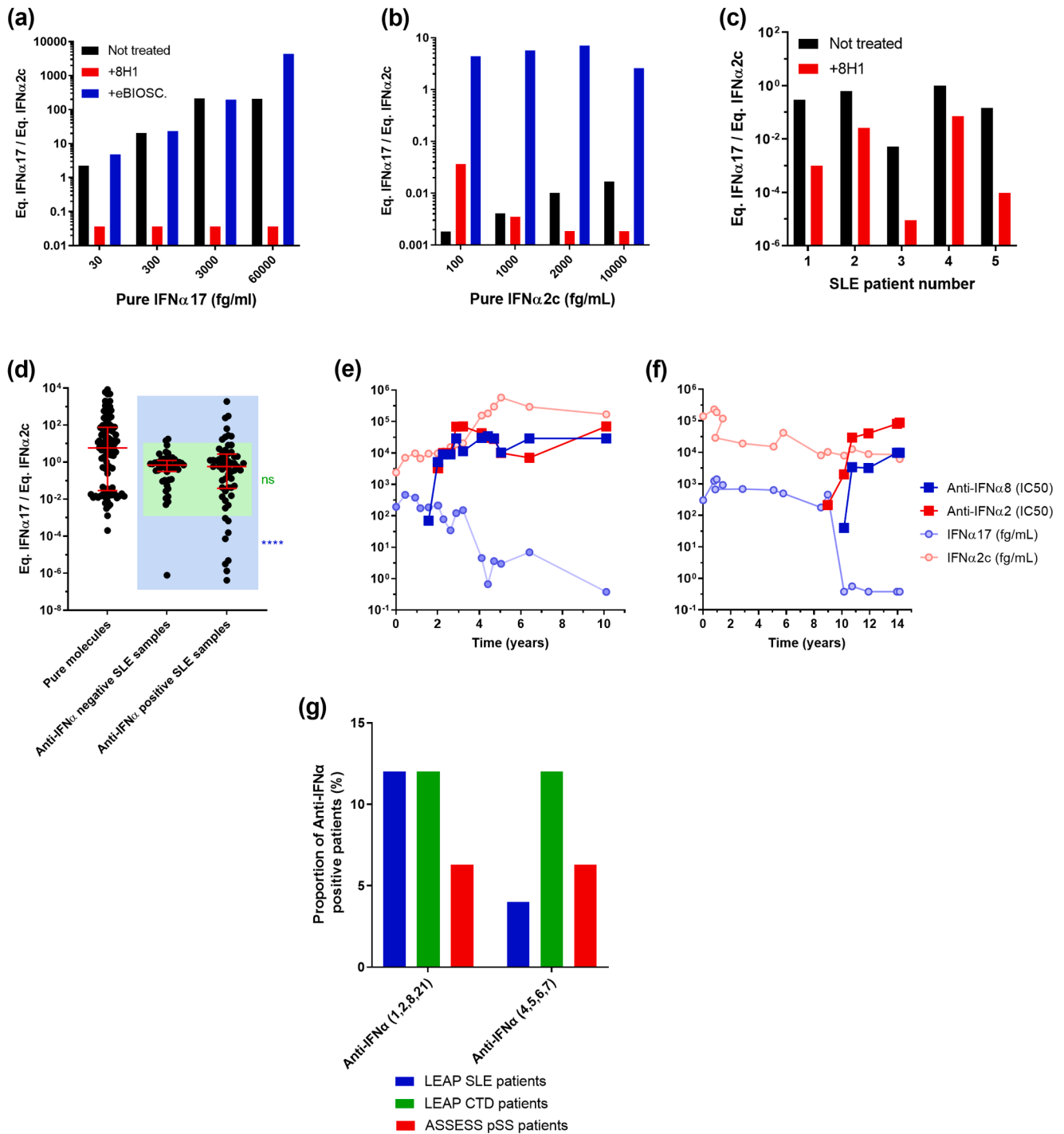


Fig. 5. Association of anti-IFN α auto-antibodies and the abnormal IFN α subtype ratios. (a) Competition assays after addition of the 8H1 clone anti-IFN α antibody in pure IFN α 17 solutions at different concentrations reduces the ratio. (b) Addition of the anti-IFN α 2 antibody in pure IFN α 2c solutions at different concentrations increases the ratio. (c) Addition of 8H1 in five SLE patient samples reduces the IFN α 17/ α 2 ratio. (d) IFN α 17/ α 2 protein ratios for SLE patient samples characterized positive for anti-IFN α antibodies in comparison with negative SLE patient samples and pure molecules. (e-f) Longitudinal analysis of anti-IFN α 8 and anti-IFN α 2 antibody concentrations, pan-IFN α and IFN α 2 assays results over time (years) in two SLE patients. (g) Proportion of anti-IFN α auto-antibodies positive samples in LEAP SLE, LEAP CTD and ASSESS pSS patients.

We also observed extremely low IFN α ratios for autoimmune patients, which were absent in the cHCV, the dengue or the viral CNS infection patients. The proportion of these low ratio patients was 3%, lower than that observed for overall anti-IFN α autoantibody positivity. These differences may be due to autoantibodies targeting multiple distinct IFN α epitopes, or that extremely low ratios are only one possible consequence of autoantibody production, and explains why only two longitudinal

patients out of 11 showed this phenotype.

Finally, this work highlights the additional information that can be obtained from using two different ELISA assays to quantify a single cytokine. The presence of autoantibodies, or enzymatic cleavage as previously described [28], could potentially decrease protein activity without decreasing the overall protein concentration. Autoantibodies could also reduce an ELISA measurement without decreasing the actual

protein concentration, e.g. if the protein is captured to circulating immune complexes. Real or active concentrations in the presence of autoantibodies are not accessible using a single ELISA, depending on the epitope recognized by the mAbs. The use of a second ELISA assay may be required, or alternatively a functional activity assay for confirmation. Additional approaches such as proximity extension assays may also potential overcome these issues through the use of two complementary Abs for double target recognition [29]. The relevance of these issues is increased for cytokines that show multiple subtypes quantified using ELISA assays that show a particular response for each subtype. It becomes impossible to compare two results without the verification that the subtype balance is the same in the two related samples. However, across the multiple patient cohorts we examined the frequency of this phenotype was relatively low, at only 3% of total patient samples examined. Therefore, once mAbs are verified for specificity and cross-reactivity such challenges may only be encountered when testing large patient cohorts.

CRedit authorship contribution statement

Vincent Bondet: Conceptualization, Methodology, Validation, Formal analysis, Investigation, Data curation, Writing - original draft, Writing - review & editing, Visualization. **Mathieu P. Rodero:** Conceptualization, Validation, Resources, Writing - review & editing. **Céline Posseme:** Investigation, Writing - review & editing. **Pierre Bost:** Investigation, Writing - review & editing. **Jérémie Decalf:** Investigation, Writing - review & editing. **Liis Haljasmägi:** Investigation, Writing - review & editing. **Nassima Bekaddour:** Investigation, Writing - review & editing. **Gillian I. Rice:** Investigation, Writing - review & editing. **Vinit Upasani:** Investigation, Writing - review & editing. **Jean-Philippe Herbeuval:** Resources, Validation, Investigation, Writing - review & editing. **John A. Reynolds:** Resources, Validation, Investigation, Writing - review & editing. **Tracy A. Briggs:** Resources, Validation, Investigation, Writing - review & editing. **Ian N. Bruce:** Resources, Validation, Investigation, Writing - review & editing. **Claudia Mauri:** Resources, Validation, Investigation, Writing - review & editing. **David Isenberg:** Resources, Validation, Investigation, Writing - review & editing. **Madhvi Menon:** Resources, Validation, Investigation, Writing - review & editing. **David Hunt:** Resources, Validation, Investigation, Writing - review & editing. **Benno Schwikowski:** Resources, Validation, Investigation, Writing - review & editing. **Xavier Mariette:** Resources, Validation, Investigation, Writing - review & editing. **Stanislas Pol:** Resources, Validation, Investigation, Writing - review & editing. **Flore Rozenberg:** Resources, Validation, Investigation, Writing - review & editing. **Tineke Cantaert:** Resources, Validation, Investigation, Writing - review & editing. **J. Eric Gottenberg:** Resources, Validation, Investigation, Writing - review & editing. **Kai Kisand:** Conceptualization, Validation, Investigation, Resources, Writing - review & editing. **Darragh Duffy:** Conceptualization, Methodology, Validation, Investigation, Writing - original draft, Writing - review & editing, Supervision, Project administration, Funding acquisition.

Declaration of Competing Interest

The authors declare that they have no known competing financial interests or personal relationships that could have appeared to influence the work reported in this paper.

Acknowledgements

We thank all patients and healthy donors who provided samples used in this study, as well as the clinical support teams that enabled their collection. We thank Immunoqore for provision of mAbs for the pan-IFN α assay. We acknowledge support from the ANR (CE17001002) awarded to DD.

Appendix A. Supplementary material

Supplementary data to this article can be found online at <https://doi.org/10.1016/j.cyto.2021.155533>.

References

- [1] W.M. Schneider, et al., Interferon-stimulated genes: a complex web of host defenses, *Annu. Rev. Immunol.* 32 (2014) 513–545, <https://doi.org/10.1146/annurev-immunol-032713-120231>.
- [2] G.E. Thorlacius, et al., An update on the role of type I interferons in systemic lupus erythematosus and Sjögren's syndrome, *Curr. Opin. Rheumatol.* 30 (2018) 471–481, <https://doi.org/10.1097/BOR.0000000000000524>.
- [3] L. Moreira-Teixeira, et al., Type I interferons in tuberculosis: Foe and occasionally friend, *J. Exp. Med.* 215 (2018) 1273–1285, <https://doi.org/10.1084/jem.20180325>.
- [4] G. Schreiber, The molecular basis for differential type I interferon signaling, *J. Biol. Chem.* 292 (2017) 7285–7294, <https://doi.org/10.1074/jbc.R116.774562>.
- [5] J. Manry, et al., Evolutionary genetic dissection of human interferons, *J. Exp. Med.* 208 (2011) 2747–2759, <https://doi.org/10.1084/jem.20111680>.
- [6] K. Guo, et al., Qualitative differences between the IFN α subtypes and IFN β influence chronic mucosal HIV-1 pathogenesis, *PLoS Pathog.* 16 (2020) 1008986, <https://doi.org/10.1371/journal.ppat.1008986>.
- [7] K.J. Hasenkrug, et al., Different biological activities of specific interferon alpha subtypes, *mSphere* 4 (2019) e00127–19, <https://doi.org/10.1128/mSphere.00127-19>.
- [8] E. Schlaepfer, et al., Reply to Hasenkrug et al., “Different Biological Activities of Specific Interferon Alpha Subtypes”, *mSphere* 4 (2019) e00275–19, <https://doi.org/10.1128/mSphere.00275-19>.
- [9] N. Gerlach, et al., Anti-retroviral effects of type I IFN subtypes in vivo, *Eur. J. Immunol.* 39 (2009) 136–146, <https://doi.org/10.1002/eji.200838311>.
- [10] C. Uggetti, et al., Self-awareness: nucleic acid-driven inflammation and the Type I interferonopathies, *Annu. Rev. Immunol.* 37 (2019) 247–267, <https://doi.org/10.1146/annurev-immunol-042718-041257>.
- [11] D.M. Rissin, et al., Single-molecule enzyme-linked immunosorbent assay detects serum proteins at subfemtomolar concentrations, *Nat. Biotechnol.* 28 (2010) 595–599, <https://doi.org/10.1038/nbt.1641>.
- [12] S. Meyer, et al., AIRE-Deficient Patients Harbor Unique High-Affinity Disease-Ameliorating Autoantibodies, *Cell* 166 (2016) 582–595, <https://doi.org/10.1016/j.cell.2016.06.024>.
- [13] M.P. Rodero, et al., Detection of interferon alpha protein reveals differential levels and cellular sources in disease, *J. Exp. Med.* 214 (2017) 1547–1555, <https://doi.org/10.1084/jem.20161451>.
- [14] C. Gitiaux, et al., Myogenic progenitor cells exhibit Type I interferon-driven proangiogenic properties and molecular signature during juvenile dermatomyositis, *Arthritis Rheumatol.* 70 (2018) 134–145, <https://doi.org/10.1002/art.40328>.
- [15] A. Llibre, et al., Plasma Type I IFN protein concentrations in human tuberculosis, *Front. Cell. Infect. Microbiol.* 9 (2019) 296, <https://doi.org/10.3389/fcimb.2019.00296>.
- [16] J.A. Reynolds, et al., Type I interferon in patients with systemic autoimmune rheumatic disease is associated with haematological abnormalities and specific autoantibody profiles, *Arthritis Res. Ther.* 21 (2019) 147, <https://doi.org/10.1186/s13075-019-1929-4>.
- [17] A. Sultanik, et al., Baseline phospho-stat1 level in PBMC is a non-invasive biomarker of early virological response to triple therapy in chronic HCV infection – ANRS C10–08 Study, *J. Hepatol.* 58 (2013) S478, [https://doi.org/10.1016/S0168-8278\(13\)61178-2](https://doi.org/10.1016/S0168-8278(13)61178-2).
- [18] V. Upasani, et al., Decreased Type I interferon production by plasmacytoid dendritic cells contributes to severe dengue, *Front. Immunol.* 11 (2020), 605087, <https://doi.org/10.3389/fimmu.2020.605087>.
- [19] A. Llibre, et al., Development and validation of an ultrasensitive single molecule array digital enzyme-linked immunosorbent assay for human interferon- α , *J. Vis. Exp.* (2018) <https://doi.org/10.3791/57421>.
- [20] G.I. Rice, et al., Assessment of interferon-related biomarkers in Aicardi-Goutières syndrome associated with mutations in TREX1, RNASEH2A, RNASEH2B, RNASEH2C, SAMHD1, and ADAR: a case-control study, *Lancet Neurol.* 12 (2013) 1159–1169, [https://doi.org/10.1016/S1474-4422\(13\)70258-8](https://doi.org/10.1016/S1474-4422(13)70258-8).
- [21] D. Duffy, et al., Functional analysis via standardized whole-blood stimulation systems defines the boundaries of a healthy immune response to complex stimuli, *Immunity* 40 (2014) 436–450, <https://doi.org/10.1016/j.immuni.2014.03.002>.
- [22] J. Hadjadj, et al., Impaired type I interferon activity and inflammatory responses in severe COVID-19 patients, *Science* 369 (2020) 718–724, <https://doi.org/10.1126/science.abc6027>.
- [23] P. Bastard, et al., Auto-antibodies against type I IFNs in patients with life-threatening COVID-19, *Science* 2020 Sep 24:eabd4585. doi: 10.1126/science.abd4585.
- [24] S.R. Akabayov, et al., NMR Mapping of the IFNAR1-EC binding site on IFN α 2 reveals allosteric changes in the IFNAR2-EC binding site, *Biochemistry* 49 (2010) 687–695, <https://doi.org/10.1021/bi901313x>.
- [25] P. Hillyer, et al., Expression profiles of human interferon-alpha and interferon-lambda subtypes are ligand- and cell-dependent, *Immunol. Cell Biol.* 90 (2012) 774–783, <https://doi.org/10.1038/icb.2011.109>.

- [26] K. Elkon, et al., Nature and functions of autoantibodies, *Nat. Rev. Rheumatol.* 4 (2008) 491–498, <https://doi.org/10.1038/nprheum0895>.
- [27] S. Gupta, et al., Distinct functions of autoantibodies against interferon in systemic Lupus Erythematosus: A comprehensive analysis of anticytokine autoantibodies in common rheumatic diseases, *Arthritis Rheumatol.* 68 (2016) 1677–1687, <https://doi.org/10.1002/art.39607>.
- [28] J. Decalf, et al., Inhibition of DPP4 activity in humans establishes its in vivo role in CXCL10 post-translational modification: prospective placebo-controlled clinical studies, *EMBO Mol. Med.* 8 (2016) 679–683, <https://doi.org/10.15252/emmm.201506145>.
- [29] S. Fredriksson, et al., Protein detection using proximity-dependent DNA ligation assays, *Nat. Biotechnol.* 20 (2002) 473–477, <https://doi.org/10.1038/nbt0502-473>.