

GD 424 – a helium-atmosphere white dwarf with a large amount of trace hydrogen in the process of digesting a rocky planetesimal

Paula Izquierdo,^{1,2}★ Odette Toloza,³ Boris T. Gänsicke^{1b,3,4}, Pablo Rodríguez-Gil,^{1,2} Jay Farihi^{1b,5}, Detlev Koester,⁶ Jincheng Guo^{1b,5} and Seth Redfield^{1b,7}

¹*Instituto de Astrofísica de Canarias, E-38205 La Laguna, Tenerife, Spain*

²*Departamento de Astrofísica, Universidad de La Laguna, E-38206 La Laguna, Tenerife, Spain*

³*Department of Physics, University of Warwick, Coventry CV4 7AL, UK*

⁴*Center for Exoplanets and Habitability, University of Warwick, Coventry CV4 7AL, UK*

⁵*Department of Physics and Astronomy, University College London, London WC1E 6BT, UK*

⁶*Institut für Theoretische Physik und Astrophysik, Universität Kiel, D-24098 Kiel, Germany*

⁷*Department of Astronomy and Van Vleck Observatory, Wesleyan University, Middletown, CT 06459, USA*

Accepted 2020 December 21. Received 2020 December 18; in original form 2020 July 6

ABSTRACT

The photospheric metal pollution of white dwarfs is now well established as the signature of the accretion of planetary debris. However, the origin of the trace hydrogen detected in many white dwarfs with helium atmospheres is still debated. Here, we report the analysis of GD 424: a metal-polluted, helium-atmosphere white dwarf with a large amount of trace hydrogen. We determined the atmospheric parameters using a hybrid analysis that combines the sensitivity of spectroscopy to the atmospheric composition, $\log(\text{H}/\text{He})$, with that of photometry and astrometry to the effective temperature, T_{eff} , and surface gravity, $\log g$. The resulting white dwarf mass, radius, and cooling age are $M_{\text{WD}} = 0.77 \pm 0.01 M_{\odot}$, $R_{\text{WD}} = 0.0109 \pm 0.0001 R_{\odot}$, and $\tau_{\text{cool}} = 215 \pm 10$ Myr, respectively. We identified and measured the abundances of 11 photospheric metals and argue that the accretion event is most likely either in the increasing or in steady state, and that the disrupted planetesimal resembles either CI chondrites or the bulk Earth in terms of its composition. We suggest that the observed 1.33×10^{22} g of trace hydrogen in GD 424 was at least partly acquired through accretion of water-rich planetary debris in an earlier accretion episode.

Key words: planetary systems – planets and satellites: composition – stars: abundances – stars: individual: GD 424 – white dwarfs.

1 INTRODUCTION

The high surface gravity of white dwarfs results in elements heavier than helium settling out of their photospheres on time-scales that are much shorter than their cooling ages (Schatzman 1948). Consequently, their atmospheres are mainly composed of hydrogen or helium.¹ However, between 25 and 50 per cent of all white dwarfs show traces of metals in their spectra (Zuckerman et al. 2003, 2010; Koester, Gänsicke & Farihi 2014), and it is now firmly established that the origin of these metals is the accretion of tidally disrupted planetary bodies (Jura 2003; Veras et al. 2014a). As a result, the spectroscopic analysis of metal-polluted white dwarfs has emerged as a powerful tool to measure the bulk compositions of the parent bodies, most of which broadly resemble inner Solar system objects (see e.g. Zuckerman et al. 2007; Koester 2009; Klein et al. 2010;

Gänsicke et al. 2012; Farihi, Gänsicke & Koester 2013; Raddi et al. 2015; Hollands et al. 2017; Hollands, Gänsicke & Koester 2018).

While photospheric metal pollution is unambiguously linked to the accretion of planetary debris, the origin of the trace hydrogen detected in up to 75 per cent of DBs (Koester & Kepler 2015) is still under debate. As DBs cool, they rapidly develop deep outer convection zones (CVZ; e.g. fig. 3 in Bergeron et al. 2011). Material accreted into the photosphere is quickly and homogeneously mixed throughout the CVZ. Metals will diffuse out of the CVZ on time-scales that depend on the physical conditions at its bottom, which rapidly increase with cooling age, from $\tau_{\text{diff}} = 100\text{--}1000$ yr for $\tau_{\text{cool}} \simeq 10$ Myr to $\tau_{\text{diff}} \simeq 1$ Myr for $\tau_{\text{cool}} \simeq 500$ Myr (Koester 2009; see fig. 1 in Wyatt et al. 2014). In contrast, hydrogen never diffuses out of the CVZ and, consequently, accretion of this element will result in a long-term increase of its total mass, M_{H} , held in the CVZ. Several possible explanations have been put forward, including primordial hydrogen left over from the evolution of the white dwarf progenitor, accretion from an external source [either the interstellar medium (Alcock & Illarionov 1980) or planetary bodies (Veras, Shannon & Gänsicke 2014b)], and most recently, dredge-up of hydrogen from deep envelope layers (Rolland, Bergeron & Fontaine 2020).

In order to explore the possible link between the presence of trace hydrogen in DBs and the accretion of planetary debris, Gentile

* E-mail: pizdo@iac.es

¹Hence, the spectra of white dwarfs with hydrogen- and helium-rich atmospheres hotter than $\simeq 5000$ and $\simeq 10\,000$ K, respectively, are dominated by Balmer (DA white dwarfs) or helium (DB white dwarfs) lines. However, an important caveat is that because of the strong opacity of hydrogen, even some helium-dominated white dwarfs appear as DAs (e.g. Kawka & Vennes 2005; Koester et al. 2005).

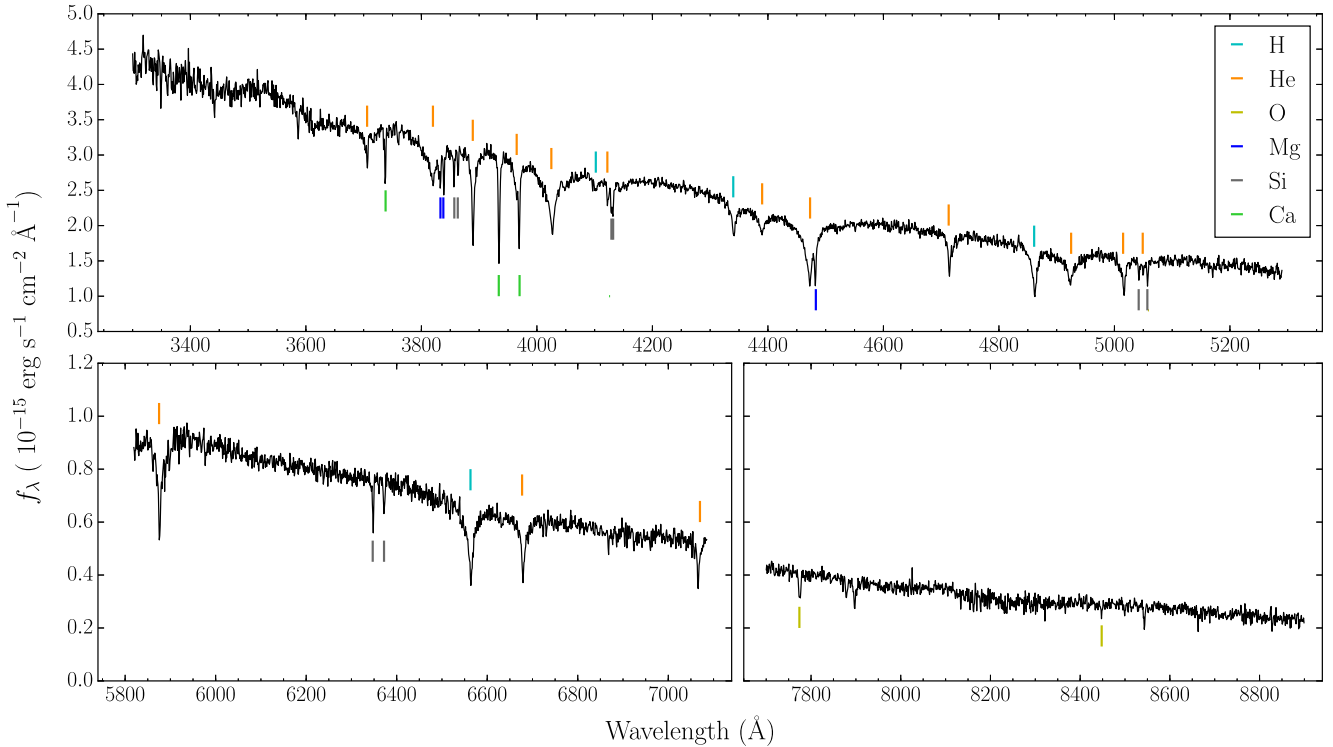


Figure 1. Average spectrum of the DBAZ white dwarf GD 424 obtained with WHT/ISIS on 2017 August 26. The spectrum shows broad and strong absorption lines of He and H, and narrower absorption features of O, Mg, Si, and Ca.

Fusillo et al. (2017) used a sample of 729 helium-dominated white dwarfs provided by the Sloan Digital Sky Survey (SDSS) and found that the presence of hydrogen is almost twice more common in metal-polluted DBs than in *pure* DBs. This result suggests that a fraction of the hydrogen may have been acquired through accretion of planetesimals, analogous to the trace metals detected in many white dwarfs. An independent evidence for planetary bodies at least contributing to the trace hydrogen in DBs is the detection of an oxygen excess in a small number of metal-polluted white dwarfs, which has been interpreted as accretion of water-rich (and hence hydrogen) material (Farihi et al. 2013; Raddi et al. 2015).

In this paper, we present the analysis of GD 424, a newly identified metal-polluted DB white dwarf with a large amount of trace hydrogen. Section 2 describes the spectra obtained and the data reduction process. In Section 3, we explain the methodology used to derive the photospheric parameters and chemical composition of GD 424. We discuss the current state of the accretion episode, the properties of the parent body and the link with trace hydrogen in DBs in Section 4. Finally, the conclusions are presented in Section 5.

2 OBSERVATIONS AND DATA REDUCTION

2.1 William Herschel Telescope spectra

We observed GD 424 on 2017 August 26 with the Intermediate-dispersion Spectrograph and Imaging System (ISIS) mounted on the Cassegrain focus of the 4.2-m William Herschel Telescope (WHT) located at the Observatorio del Roque de los Muchachos on La Palma, Spain. The ISIS spectrograph is capable of obtaining simultaneous blue and red optical spectra. The blue and red arms are equipped with the EEV12 and the deep-depletion RED + 2048 × 4096 pixel CCD detectors, respectively. We binned both detectors by two in the

spatial and spectral directions. To separate the blue and red spectra, we employed the standard 5300-Å dichroic. We used a slit width of 1 arcsec at the parallactic angle and the R600B and R600R gratings for the blue and red arms, respectively, with two different central wavelengths per grating: 3930 and 4540 Å in the blue, and 6562 and 8200 Å in the red. We also placed the GG495 second-order sorter filter in the red arm. These set-ups provided spectral resolutions [full width at half-maximum (FWHM)] of 1.9 Å for the two blue central wavelengths and 1.7 Å for the red ones. We took two 900-s spectra for each central wavelength. The observations were conducted under clear sky conditions with variable seeing between 0.7 and 1.0 arcsec.

The spectra were bias and flat-field corrected making use of standard procedures within IRAF,² and the cosmic rays removed with the IRAF package L.A.Cosmic (van Dokkum 2001). To obtain the 1D spectra, we subtracted the sky background and then performed an optimal extraction (Horne 1986) with the STARLINK/PAMELA³ data reduction software (Marsh 1989). The pixel–wavelength solution was obtained by fitting CuNe + CuAr arc lamp spectra with fourth-order polynomials. We also took spectra of the spectrophotometric standard star BD+33 2642 to correct for the spectral response. These last two steps were performed using MOLLY.³

We show the composite average spectrum of GD 424 in Fig. 1. The spectrum shows a helium-dominated photosphere with presence of hydrogen and a number of much narrower metallic absorption lines of oxygen, magnesium, silicon, and calcium, indicating that GD 424 is a DBAZ white dwarf (the Z accounts for the presence of metals).

²IRAF is distributed by the National Optical Astronomy Observatories.

³Both the PAMELA and MOLLY packages were developed by Tom Marsh; <http://deneb.astro.warwick.ac.uk/phsaap/software/molly/html/INDEX.html>.

2.2 Keck spectra

A high-resolution spectrum (FWHM = 0.1 Å) of the target was obtained on 2019 January 9 using the High Resolution Echelle Spectrometer (HIRES; Vogt et al. 1994) on the 10-m Keck I telescope at Mauna Kea Observatory, Hawaii. HIRES is a cross-dispersed échelle spectrograph equipped with a mosaic of three MIT–LL 2048 × 4096 pixel CCD detectors. To carry out the observation, we used the HIRESb configuration with the C5 decker (1.148 arcsec × 7 arcsec slit), covering the spectral range 3100–5950 Å at a nominal spectral resolving power of $R \approx 37\,000$. The data were acquired in good conditions at airmasses between 1.7 and 1.8 and were taken in three consecutive exposures of 1800 s each. The spectra were initially reduced using standard tasks within IRAF to create master bias and flat frames. Extraction and further reduction was performed using MAKEE.⁴ The night in question lacked a bright trace star for the extraction, and thus observations of BD+284211 taken on 2016 June 3 with the same instrument settings were used for this purpose. Each of the three exposures were reduced separately, as were the data from the three individual instrument arrays. Standard procedures were followed in MAKEE, including bias subtraction, flat-fielding, order definition, extraction, sky subtraction, wavelength calibration, and heliocentric velocity corrections.

The Keck spectra display broad helium and hydrogen absorption lines (average FWHM of $\simeq 10$ Å) and many narrow metal lines (average FWHM of $\simeq 0.2$ Å) also in absorption. The much higher spectral resolution and bluer coverage provided by HIRES allowed us to identify additional metal transitions produced by sodium, aluminium, chromium, manganese, iron, and nickel, as well as magnesium, silicon, and calcium that were also detected in the WHT spectrum.

3 ATMOSPHERIC PARAMETERS

Measurements of the effective temperatures (T_{eff}) and surface gravities ($\log g$) of DB white dwarfs can be obtained from either spectroscopy or photometry. Making use in both cases of synthetic atmospheric spectra, the spectroscopic method relies on fitting the helium and Balmer lines (e.g. Voss et al. 2007; Bergeron et al. 2011), while the photometric method is based on reproducing the observed photometry from the synthetic model spectra (Genest-Beaulieu et al. 2019), the observed parallax of the sources, and the well-established white dwarf mass–radius relation. However, these methods do usually not arrive at the same solution: T_{eff} derived from the photometry alone is found systematically lower, while the $\log g$ values are different but do not show a general trend (Genest-Beaulieu & Bergeron 2019; Tremblay et al. 2019). Here, we will explore the results of both methods applied to GD424 and, in addition, implement a hybrid method that simultaneously makes use of the independent constraints provided by both the photometric and spectroscopic data.

However, an additional complication in the case of GD424 are the photospheric trace abundances of both hydrogen and several metals, which do affect the structure of the photosphere in terms of providing free electrons and additional opacities (e.g. Hollands et al. 2017). For the effective temperature of GD424 (16 560 K, see Section 3.4), the effect on the ionization balance is relatively minor. However, line blanketing, in particular of the many strong metal lines in the

ultraviolet,⁵ has a measurable effect. Ultraviolet line blanketing in ‘warm’ DB[A]Z white dwarfs has not been systematically explored (for a discussion see Dufour et al. 2012 and Coutu et al. 2019), and is beyond the scope of this paper. We proceed here with an iterative approach to optimize all atmospheric parameters: T_{eff} , $\log g$, $\log(\text{H}/\text{He})$, and the individual metal abundances. In what follows, we briefly outline the overall strategy and describe the details of the atmosphere models and the methods that we used.

Using a grid of He + H model spectra, we first determined T_{eff} , $\log g$, and $\log(\text{H}/\text{He})$ from the WHT average spectrum (Section 3.2). We also fit the available broad-band photometric points to obtain an independent measurement of T_{eff} and $\log g$, making use of the *Gaia* Data Release 2 (DR2) parallax as an additional constraint, and fixing $\log(\text{H}/\text{He})$ to the spectroscopic value. Note that this is necessary, as the photometry alone is not sensitive to the chemical abundance (Section 3.3). We found that the results from both fits disagreed and therefore implemented a hybrid approach that provided the parameters that best fit the spectroscopy and the photometry simultaneously (Section 3.4).

In order to obtain the metal abundances, we produced a grid of synthetic spectra for each metal detected, with T_{eff} , $\log g$, and $\log(\text{H}/\text{He})$ fixed at the values estimated above. The abundances were determined by fitting the metal absorption lines in the WHT and Keck spectra (Section 3.5).

With these initial metal abundances fixed, we produced a new grid of synthetic He + H + Z spectra and refine the values of T_{eff} , $\log g$, and $\log(\text{H}/\text{He})$ with the spectroscopic, photometric, and hybrid approaches. We then iterate over this whole process using new sets of He + H + Z model spectra in each step until convergence is achieved.

3.1 Atmosphere models and fitting procedure

The synthetic spectra were computed using the code of Koester (2010). DB white dwarfs have substantial outer CVZs, which are treated in the model atmospheres following a 1D approach that includes the mixing length, $\text{ML}2/\alpha$. Past studies have used $\text{ML}2/\alpha$ in the range 0.6–1.25, with higher values used for helium-dominated atmospheres (Voss et al. 2007; Bergeron et al. 2011). In a study of pure helium atmospheres, Cukanovaite et al. (2018) showed that the spectroscopic analysis of DBs using a full 3D treatment of the CVZ results in somewhat different atmospheric parameters compared to the 1D models. The situation complicates further if the envelope contains traces of hydrogen, and Cukanovaite et al. (2019) derived a parameter-dependent empirical calibration of the mixing length parameter from a suite of 3D models sampling a wide range in T_{eff} , $\log g$, and $\log(\text{H}/\text{He})$. They found $\text{ML}2/\alpha = 1.0$ to be the best approach within the parameters of GD424 (see fig. 10 and 11 in Cukanovaite et al. 2019). Our initial He + H grid of model spectra spanned $T_{\text{eff}} = 10\,000$ – $30\,000$ K in steps of 200 K, $\log g = 7.0$ – 9.0 in steps of 0.2 dex, and $\log(\text{H}/\text{He}) = -5.0$ to 0.0 in steps of 0.2 dex and had no metals included. For the subsequent iterations, we produced grids of He + H + Z model spectra exploring the same T_{eff} , $\log g$, and $\log(\text{H}/\text{He})$ parameter space, but now including metals with the abundances estimated in the previous iteration.

We used the Markov chain Monte Carlo (MCMC) EMCEE package within PYTHON (Foreman-Mackey et al. 2013) to fit the model spectra

⁵For examples of ultraviolet spectra of DB white dwarfs with similar temperature and metal abundance as GD424 see fig. 1 of Xu et al. (2019) and fig. 1 of Wilson et al. (2015).

⁴<http://www.astro.caltech.edu/~tb/makee/>.

to the observed data. We explored the parameter space and minimized the corresponding χ^2 using 150 different seeds and 40 000 steps per seed. We employed flat priors for all the parameters except for the parallax, ϖ , for which we used a Gaussian prior. The MCMC analysis provides statistical uncertainties on all parameters and reveals correlations between them. In addition, we carried out a more realistic analysis of the uncertainties also taking into account systematic errors (hereafter quoted in brackets next to the statistical uncertainties).

3.2 Spectral fitting

We derived T_{eff} , $\log g$, and $\log(\text{H}/\text{He})$ by fitting our grid of model spectra to the WHT average spectrum. The synthetic spectra were first degraded to the FWHM resolution of the observed data (1.9 Å). We then normalized the helium and Balmer absorption lines in both the observed and model spectra by using low-order polynomial fits to the surrounding continuum regions. Hence, the spectral fitting relied entirely on the shape of the Balmer and helium absorption line profiles (e.g. Koester, Schulz & Wegner 1981; Bergeron, Saffer & Liebert 1992). Some of these profiles have metal lines superimposed that were masked out for the fitting process. However, the Mg and Si lines between He I $\lambda 3820$ and He I $\lambda 3889$, and those bracketing He I $\lambda 5048$, were included in the analysis since their removal would have left too little of the helium line profiles available for a reliable fit.

We note that we made no attempt to determine the photospheric parameters from the Keck spectrum, as most of the Balmer and helium lines extend over more than one spectral order, which could not be reliably flux calibrated due to the lack of a spectrophotometric standard star obtained alongside the observations of GD 424.

The best-fitting model was found for $T_{\text{eff}} = 16\,417 \pm 55$ (95) K, $\log g = 8.14 \pm 0.01$ (0.02) dex, and $\log(\text{H}/\text{He}) = -3.68 \pm 0.02$ (0.04) dex (Table 2). Notice that this model includes the metal abundances provided in Table 4. We estimated the systematic uncertainties from fitting 10 different subsets of helium and Balmer lines in the same MCMC fashion mentioned above, and computing the standard deviation, where we ensured that each subset included lines of both elements.

While the spectral modelling alone provided good constraints on the three atmospheric parameters (see Fig. 3, left-hand panel), neutral helium transitions are less sensitive to effective temperature and surface gravity changes than their hydrogen counterparts.

3.3 Photometric fitting

To estimate the atmospheric parameters from photometric data the synthetic spectra need to be scaled with the solid angle of the star, $\pi \times (R_{\text{WD}}/D)^2$, with $D = 1000/\varpi$ (ϖ is the parallax in mas) the distance to the source and R_{WD} its radius. Besides, photometric data are affected by interstellar extinction, so we reddened the models by $E(B - V) = 0.01$, as determined from the 3D dust map produced by Stilism⁶ and the distance to GD 424 ($D = 91.15$ pc) derived from its *Gaia* DR2 (*Gaia* Collaboration 2018) parallax ($\varpi = 10.97 \pm 0.05$ mas). Scaling and reddening place the grid of synthetic spectra on an absolute flux scale that can then be compared with existing photometric data (see Table 1). The photometric magnitudes were converted into fluxes using the appropriate zero-points available

Table 1. Photometry of GD 424. We list the point spread function (PSF) SDSS magnitudes (Fukugita et al. 1996) and the mean PSF Pan-STARRS1 magnitudes (Tonry et al. 2012).

| <i>Gaia</i> DR2 (Vega mag) | Pan-STARRS1 DR1 (AB mag) | SDSS (AB mag) |
|------------------------------------|-----------------------------|------------------------|
| $G_{\text{BP}} = 16.093 \pm 0.005$ | | $u = 15.893 \pm 0.032$ |
| $G = 16.223 \pm 0.001$ | $g = 16.133 \pm 0.006$ | $g = 16.106 \pm 0.018$ |
| $G_{\text{RP}} = 16.313 \pm 0.005$ | $r = 16.374 \pm 0.002$ | $r = 16.377 \pm 0.012$ |
| | $i = 16.642 \pm 0.003$ | $i = 16.612 \pm 0.012$ |
| | $z = 16.886 \pm 0.006$ | $z = 16.912 \pm 0.019$ |
| | $y = 17.042 \pm 0.007$ | |

Table 2. Atmospheric parameters of GD 424 obtained through the spectroscopic, photometric and hybrid fitting techniques. The photometric fits account for the final photometric analysis ('Phot', all filters included except *Gaia* *G*; see text for details) and the three individual photometric data sets: SDSS, Pan-STARRS1 (PS1), and *Gaia*. The $\log(\text{H}/\text{He})$ value was fixed to the spectroscopic best-fitting value. We note that all the uncertainties quoted here also account for systematic errors, except for the data sets labelled with *, that indicate pure statistical errors derived from the MCMC fitting.

| Fitting | T_{eff} (K) | $\log g$ (dex) | $\log(\text{H}/\text{He})$ (dex) | ϖ (mas) |
|---------------|-------------------------|------------------------|-------------------------------------|-------------------------|
| Spec | $16\,417 \pm 95$ | 8.14 ± 0.02 | -3.68 ± 0.04 | – |
| Phot | $16\,913 \pm 285$ | 8.28 ± 0.02 | -3.68 | 10.97 ± 0.06 |
| SDSS* | $16\,580^{+505}_{-380}$ | $8.26^{+0.04}_{-0.03}$ | -3.68 | 10.97 ± 0.05 |
| PS1* | $16\,505 \pm 225$ | 8.25 ± 0.02 | -3.68 | 10.96 ± 0.05 |
| <i>Gaia</i> * | $16\,926 \pm 335$ | 8.35 ± 0.03 | -3.68 | $10.97^{+0.06}_{-0.05}$ |
| Hybrid | $16\,560 \pm 75$ | 8.25 ± 0.02 | -3.65 ± 0.03 | 10.86 ± 0.05 |

on the Spanish Virtual Observatory (SVO) Filter Profile Service,⁷ while synthetic model fluxes were computed for each photometric bandpass. R_{WD} is a function of T_{eff} and $\log g$ and was obtained using the mass–radius relation of Fontaine, Brassard & Bergeron (2001) for C/O cores and thin hydrogen layers ($10^{-10} M_{\text{H}}/M_{\text{WD}}$, with M_{H} and M_{WD} the hydrogen and white dwarf mass, respectively). The photometric fit is not sensitive either to $\log(\text{H}/\text{He})$ or the metal abundances, but as mentioned above, they affect the structure of the white dwarf photosphere. Hence, these abundances were fixed as determined from the spectroscopic and metal fit in each iteration. We then fitted the three free parameters T_{eff} , $\log g$, and ϖ again using the MCMC procedure outlined above, using flat priors for T_{eff} and $\log g$, and a Gaussian prior for ϖ .

We fitted the SDSS, the Panoramic Survey Telescope and Rapid Response System (Pan-STARRS1) Data Release 1 (DR1), and the *Gaia* DR2 photometry⁸ separately. The best-fitting parameters and their statistical uncertainties are listed in Table 2, and the probability distributions of the parameters are shown in Fig. 2. We then combined the three photometric data sets and repeated the fitting process, now excluding the extremely broad-band *Gaia* *G* band, which encompasses all other bands and hence does not add in terms

⁷<http://svo2.cab.inta-csic.es/theory/fps/>.

⁸Additional broad-band photometry of GD 424 is available, but was not included in the fit for the following reasons: The Galaxy Evolution Explorer (*GALEX*) ultraviolet fluxes are likely to be affected by blanketing from metal lines, the AAVSO Photometric All-Sky Survey (APASS) photometry quality is inferior to the other optical data already used, and the Two Micron All-Sky Survey (2MASS) and Wide-field Infrared Survey Explorer (*WISE*) infrared observations do not add any useful constraints to the atmospheric parameters.

⁶<https://stilism.obspm.fr/>.

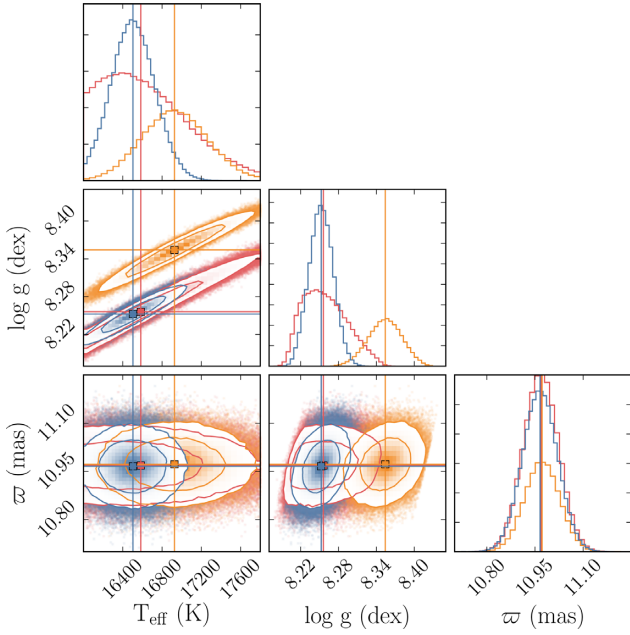


Figure 2. Probability distributions of T_{eff} , $\log g$, and ϖ derived from three different photometric catalogues: SDSS (red), Pan-STARRS1 (blue), and *Gaia* DR2 (orange). Note that we used the three *Gaia* filters for this plot: G_{BP} , G , and G_{RP} . The vertical solid lines mark the median values and the contour lines identify the 1σ and 2σ regions.

of useful constraints. We obtained $T_{\text{eff}} = 16913 \pm 170$ (285) K, $\log g = 8.28 \pm 0.01$ (0.02) dex, and $\varpi = 10.97 \pm 0.05$ (0.06) mas as best-fitting parameters for the combined photometry. We note that this fit was carried out with synthetic spectra that included the metal abundances provided in Table 4. The systematic uncertainties were estimated as the average of the residuals obtained by computing 10 different MCMC fits with different combinations of the photometric bands drawn from the three individual sets.

The T_{eff} provided by the photometric fit is 500 K hotter than that obtained using the spectroscopic method (Table 2). The difference in $\log g$ is significant (≈ 0.14 dex), but the width and depth of the helium transitions are not very sensitive to changes in $\log g$. The derived parallax is entirely compatible with the *Gaia* DR2 value.

3.4 Hybrid fitting

The discrepant results obtained with the two different methods above motivated us to explore a hybrid technique that combines the spectroscopic sensitivity to $\log(\text{H}/\text{He})$ with that to T_{eff} and $\log g$ of the photometric method. As before, we used an MCMC optimization to fit the model spectra to the WHT spectroscopy (we used the same absorption lines as in Section 3.2, see Fig. 4) and to the SDSS, Pan-STARRS1, and *Gaia* photometry (again excluding the broad *Gaia* G band). We minimized the sum of the spectroscopic and photometric χ^2 values using four free parameters: T_{eff} , $\log g$, $\log(\text{H}/\text{He})$, and ϖ . We adopted flat priors except for ϖ , for which we used a Gaussian prior.

The best-fitting parameters are: $T_{\text{eff}} = 16560 \pm 42$ (75) K, $\log g = 8.25 \pm 0.01$ (0.02) dex, $\log(\text{H}/\text{He}) = -3.65 \pm 0.01$ (0.03) dex, and $\varpi = 10.86 \pm 0.05$ (0.05) mas (see right-hand panel of Fig. 3). The systematic errors were estimated by performing several MCMC fits with different subsets of photometric points and helium and Balmer absorption lines. Based on white dwarf cooling

models,⁹ these correspond to a white dwarf mass, radius, and cooling age of $M_{\text{WD}} = 0.77 \pm 0.01 M_{\odot}$, $R_{\text{WD}} = 0.0109 \pm 0.0001 R_{\odot}$, and $\tau_{\text{cool}} = 215 \pm 10$ Myr, respectively.

The absorption lines used in both the spectroscopic and hybrid approaches are displayed in Fig. 4, with the best-fitting models overlaid in blue and red, respectively. The spectroscopic and hybrid solutions led to a difference in T_{eff} and $\log g$ of 140 K and ≈ 0.1 dex that we interpret as the result of the higher $\log g$ forced by the inclusion of the parallax as a free parameter. However, the line profiles of the two models are nearly indistinguishable, illustrating that both sets of solutions are consistent with the WHT spectrum. The ϖ derived from the hybrid method is 0.11 mas smaller than the *Gaia* DR2 value.¹⁰ This discrepancy is very likely related to the lower $\log g$ of the hybrid fit as compared to the photometric value (see Table 2), that arises from the inclusion of the spectroscopy, which forces the hybrid fit to settle on a slightly larger distance to compensate.

The discrepancies between the photometric, spectroscopic, and hybrid fits underline that there remain systematic uncertainties within the atmospheric models, the observational data, and the different fitting methods. Further exploration of these uncertainties is necessary, but cannot be within the context of this study of an individual star. We will carry out a detailed comparison of the different fitting procedures using a larger sample of DBA white dwarfs in a forthcoming paper. For the remaining analysis and discussion, we will adopt the atmospheric parameters of GD 424 resulting from the hybrid analysis, that are derived from fitting all the free parameters simultaneously to the available data. We note that the small differences in the atmospheric parameters between the different fitting approaches have no impact on either the abundance analysis carried out in Section 3.5 or its interpretation.

3.5 Photospheric metal abundances

The WHT spectrum of GD 424 presents metal absorption lines of oxygen, magnesium, silicon, and calcium. In addition, we also identified traces of sodium, aluminium, titanium, chromium, manganese, iron, and nickel in the Keck spectrum. This is mainly a consequence of the much superior spectral resolution of the Keck data (0.2 Å) compared with the WHT. Therefore, we used the Keck spectrum to derive all the metal abundances except for oxygen, whose absorption lines were only covered by the WHT spectrum. However, and for comparison purposes, we also measured the abundances of magnesium, silicon, and calcium in the WHT spectrum, using lines not necessarily common to the Keck spectrum. Keeping T_{eff} , $\log g$, and $\log(\text{H}/\text{He})$ fixed to the values obtained from the hybrid fitting technique in each step of the iteration (Section 3.4), we generated grids of model spectra for each of the metals (Z) identified. We explored the $\log(Z/\text{He})$ space between -9.0 and -3.0 in steps of 0.1 dex, and followed the same procedure as in Section 3.2 to continuum normalize the regions around each of the metal absorption lines to be included in the fit (see Table 3), degraded the models to the corresponding instrument spectral resolution, and carried out the χ^2 minimization via MCMC independently for each metal.

⁹<http://www.astro.umontreal.ca/~bergeron/CoolingModels> (Fontaine et al. 2001; Holberg & Bergeron 2006; Kowalski & Saumon 2006; Tremblay, Bergeron & Gianninas 2011).

¹⁰We note that the *Gaia* eDR3 value of the parallax is 10.89 ± 0.04 mas, which is in good agreement with the result from the hybrid fit. However, we refrain from repeating the analysis in the light of eDR3 (Lindgren et al. 2020), as it would not affect any of the further discussions and conclusions in this paper.

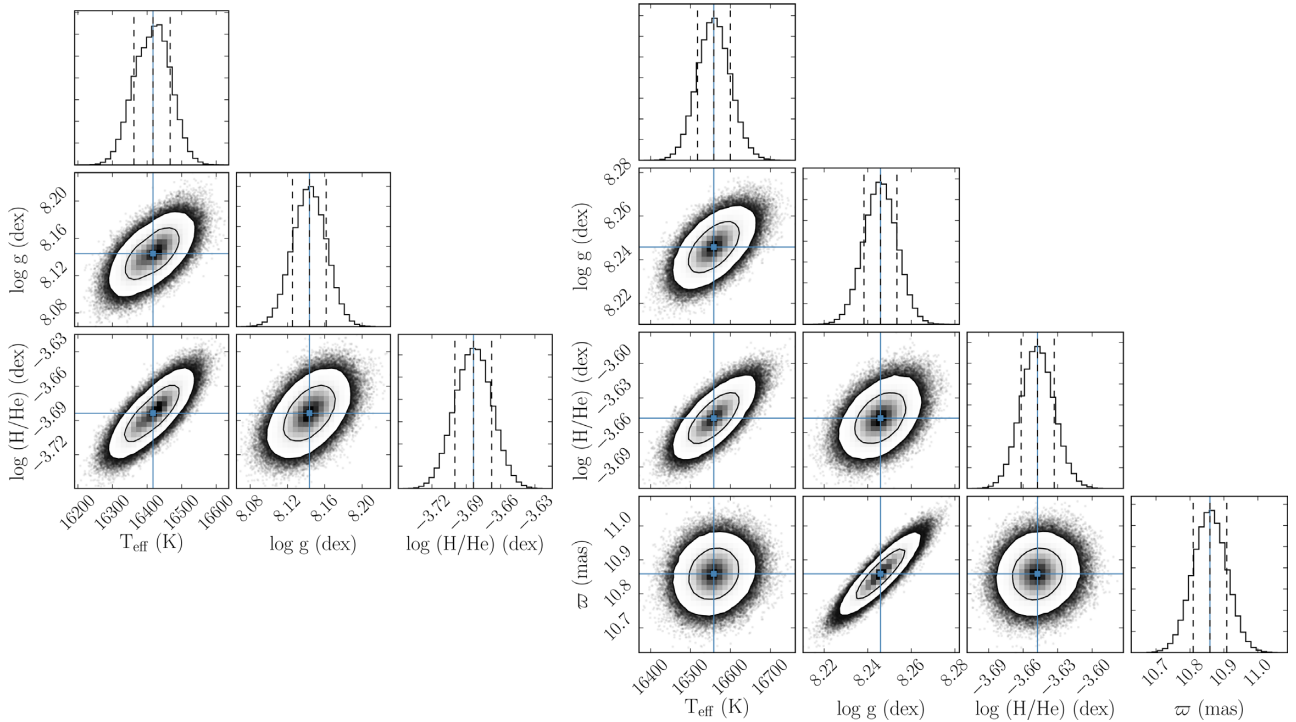


Figure 3. Probability distributions of the photospheric parameters derived from the spectroscopic (left) and hybrid (right) fits. The vertical solid line marks the 0.5 quantile, and the vertical dashed lines the 0.16 and 0.84 quantiles. The contour lines identify the 1σ and 2σ regions. We note that just the statistical uncertainties derived from the MCMC are shown in this plot.

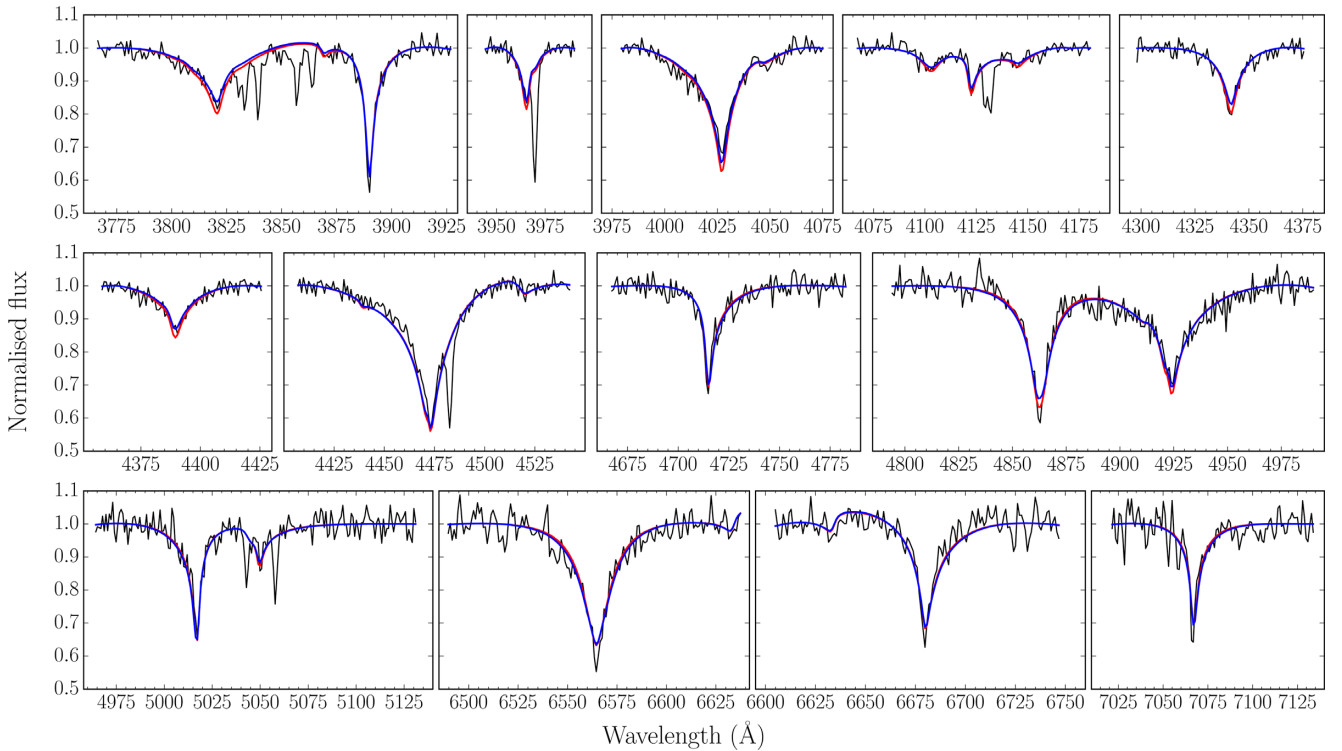


Figure 4. Hydrogen and helium absorption lines used in the spectroscopic and hybrid fits to the WHT average spectrum. The best-fitting models for each approach are overlotted in red and blue, respectively. See Table 2 for details.

The metal abundances derived for the WHT and Keck spectra are listed in Table 4. We estimated the systematic errors by repeating the spectral fitting for each metal with different subsets of lines within the same spectrum. Fig. 5 displays the best-fitting models overlotted

on some of the lines used to measure the abundances. We note that the only transition of Na I is the 5890/96 Å absorption doublet that is only marginally detected and hence we only quoted an upper limit on its abundance.

Table 3. Spectral lines used in the determination of the metal chemical abundances.

| Ion | Air wavelength (Å) |
|-------|---|
| O I | 7771.94, 7774.17, 7775.39, 8446.36 |
| Na I | 5889.95, 5895.92 |
| Mg I | 3332.15, 3336.67, 3829.36, 3832.30, 3838.29, 5167.32, 5172.68, 5183.60 |
| Mg II | 3838.29, 3850.39, 4384.64, 4390.56, 4427.99, 4433.99, 4481.13, 4481.33 |
| Al I | 3944.01 |
| Al II | 3586.56, 3587.07, 3587.45, 4663.06 |
| Si II | 3853.66, 3856.02, 3862.60, 4128.07, 4130.89, 5055.98 |
| Ca I | 4226.73 |
| Ca II | 3158.87, 3179.33, 3181.28, 3706.03, 3736.90, 3933.66, 3968.47 |
| Ti II | 3168.52, 3190.88, 3202.53, 3217.05, 3218.27, 3222.84, 3224.24, 3228.61, 3229.19, 3229.42, 3232.28, 3236.57, 3239.04, 3239.66, 3241.98, 3248.60, 3251.91, 3252.91, 3254.25, 3261.58, 3278.29, 3278.92, 3287.65, 3321.70, 3322.94, 3329.45, 3332.11, 3335.19, 3341.87, 3349.03, 3349.40, 3361.21, 3372.79, 3380.28, 3383.76, 3387.83, 3394.57, 3444.31, 3504.89, 3510.84, 3535.41, 3685.19, 3741.64, 3759.29, 3761.32, 4163.64, 4171.90, 4290.22, 4294.09, 4300.04, 4549.62, 4571.97 |
| Cr II | 3180.70, 3183.33, 3196.92, 3197.08, 3209.18, 3216.55, 3217.40, 3234.06, 3238.76, 3269.08, 3269.76, 3270.13, 3291.76, 3295.43, 3310.66, 3311.93, 3312.18, 3314.54, 3324.06, 3324.13, 3324.34, 3342.58, 3378.33, 3379.37, 3379.82, 3382.68, 3402.40, 3403.32, 3408.77, 3421.21, 3422.74, 3585.29, 3585.50, 3677.68, 3677.84 |
| Mn II | 3441.98, 3460.31, 3474.04, 3474.13, 3482.90, 3495.83, 3496.81, 3497.53 |
| Fe I | 3190.82, 3211.99, 3227.79, 3249.50 |
| Fe II | 3135.36, 3144.75, 3167.86, 3170.34, 3177.53, 3183.07, 3185.32, 3186.74, 3187.30, 3192.07, 3192.91, 3193.80, 3196.07, 3210.45, 3213.31, 3227.74, 3231.71, 3232.79, 3236.83, 3237.40, 3237.82, 3243.72, 3247.18, 3247.39, 3255.87, 3258.77, 3259.05, 3266.94, 3276.60, 3277.35, 3281.29, 3289.35, 3295.82, 3297.88, 3323.06, 3436.11, 3456.93, 3468.68, 3493.47, 3621.27, 3624.89, 3748.49, 4233.16, 4303.17, 4351.76, 4508.28, 4522.63, 4549.20, 4549.47, 4555.89, 4583.83, 5197.57, 5216.86, 5227.49, 5234.62, 5275.99, 5316.61 |
| Ni I | 3414.76, 3465.6, 3471.3, 3513.93, 3515.05, 3524.54, 3576.73, 3769.24 |

Table 4. Element photospheric abundances derived from the Keck and the WHT spectra (hybrid best-fitting parameters: $T_{\text{eff}} = 16\,560$ K, $\log g = 8.25$ dex, and $\log(\text{H}/\text{He}) = -3.65$ dex), diffusion velocities, and sinking times for each element in the CVZ.

| Element | $\log(Z/\text{He})$ (dex) | | v_z (10^{-7} cm s $^{-1}$) | τ_z (10^4 yr) |
|---------|------------------------------|--------------------|-------------------------------------|--------------------------|
| | Keck | WHT | | |
| H | – | / -3.65 ± 0.03 | – | – |
| O | – | / -4.59 ± 0.12 | 2.30 | 12.20 |
| Na | < -6.5 | / – | 3.10 | 9.06 |
| Mg | -5.15 ± 0.04 | / -5.18 ± 0.02 | 3.09 | 9.07 |
| Al | -6.3 ± 0.1 | / – | 3.41 | 8.22 |
| Si | -5.29 ± 0.04 | / -5.36 ± 0.02 | 3.38 | 8.30 |
| Ca | -6.15 ± 0.05 | / -6.05 ± 0.02 | 4.34 | 6.47 |
| Ti | $-7.78^{+0.08}_{-0.09}$ | / – | 5.26 | 5.34 |
| Cr | $-7.19^{+0.07}_{-0.06}$ | / – | 5.54 | 5.06 |
| Mn | $-7.64^{+0.06}_{-0.07}$ | / – | 5.82 | 4.82 |
| Fe | $-5.53^{+0.10}_{-0.12}$ | / – | 5.79 | 4.84 |
| Ni | -6.93 ± 0.10 | / – | 5.90 | 4.75 |

4 DISCUSSION

4.1 Chemical abundances of the parent body

In the previous section, we estimated the photospheric abundances relative to helium of the 11 metals identified in our spectra. Translating these abundances into the bulk composition of the parent body needs taking into account the diffusion velocities of the individual chemical elements and the accretion history of GD 424.

Following Koester (2009), we assume a simple scenario for the accretion history in which the mass transfer to the white dwarf switches on, remains at a constant rate for some time, and then switches off.¹¹ In this scenario, accreting white dwarfs can be found in three different phases: the increasing state, the steady state, and the decreasing state. In the increasing state, planetary debris is accreted on to an initially pure-helium atmosphere, and metal abundances increase linearly with time. Early in the increasing state, the photospheric abundances are approximately those of the parent body, but they begin to diverge later on because the individual elements settle out of the CVZ with different velocities. In the steady state, an accretion/diffusion equilibrium is reached, all elements diffuse out of the CVZ (with their own individual velocities) at the same rate as they are accreted, and the parent body composition can be reliably derived. In the decreasing phase, the accretion has stopped and the abundances of the accreted elements decline exponentially and proportional to their individual sinking time-scales.

Determining the accretion state of metal-polluted DBs is highly uncertain as the diffusion time-scales are of the order of the estimated lifetimes of the circumstellar discs (10^4 – 10^6 yr; Girven et al. 2012). Consequently, reaching steady state can take $\sim 10^5$ – 10^6 yr. Similarly, the accretion/diffusion equilibrium can only last for a few diffusion times due to the limited accretion disc lifetime. Finally, once accretion stops and the system enters the decreasing state, photospheric metals will remain detectable for $\sim 10^5$ – 10^6 yr.

Assuming the accretion rate, \dot{M}_z , diffusion velocity, v_z , and settling time, τ_z as constants (Koester 2009), the time-dependent mass abundance, $Z_{\text{ph,m}}$, of each metal in the CVZ (which is identical to the photospheric mass abundance because of the rapid mixing in the CVZ) is given by

$$Z_{\text{ph,m}}(t) = Z_{\text{ph,m}}(0) e^{-t/\tau_z} + \frac{\tau_z \dot{M}_z}{M_{\text{CVZ}}} [1 - e^{-t/\tau_z}], \quad (1)$$

with M_{CVZ} the mass contained in the CVZ. The parent body composition is mirrored in the accretion rates of the individual elements, \dot{M}_z , and can be computed from the measured photospheric abundances given an assumption of the time t at which the system is observed.

GD 424 is a metal-polluted, helium-dominated white dwarf that can be in any of the three accretion phases mentioned above. Inspection of the spectral energy distribution of GD 424 reveals no infrared excess (Fig. 6), that can be interpreted as a lack of a debris disc, i.e. a reservoir of material that can be accreted. While this could be taken as an argument for the system being in the decreasing state, there is growing evidence that some discs may be too faint to be detected (Bergfors et al. 2014; Wilson et al. 2019; see also the discussion by Bonsor et al. 2017).

We have computed M_{CVZ} , v_z , and τ_z ¹² for each detected metal following Koester (2009). We used the updated input physics for

¹¹Reality is likely more complicated, with a time-dependent variation of the mass accretion rate.

¹² τ_z depends on M_{CVZ} , the density and depth of the CVZ, and v_z .

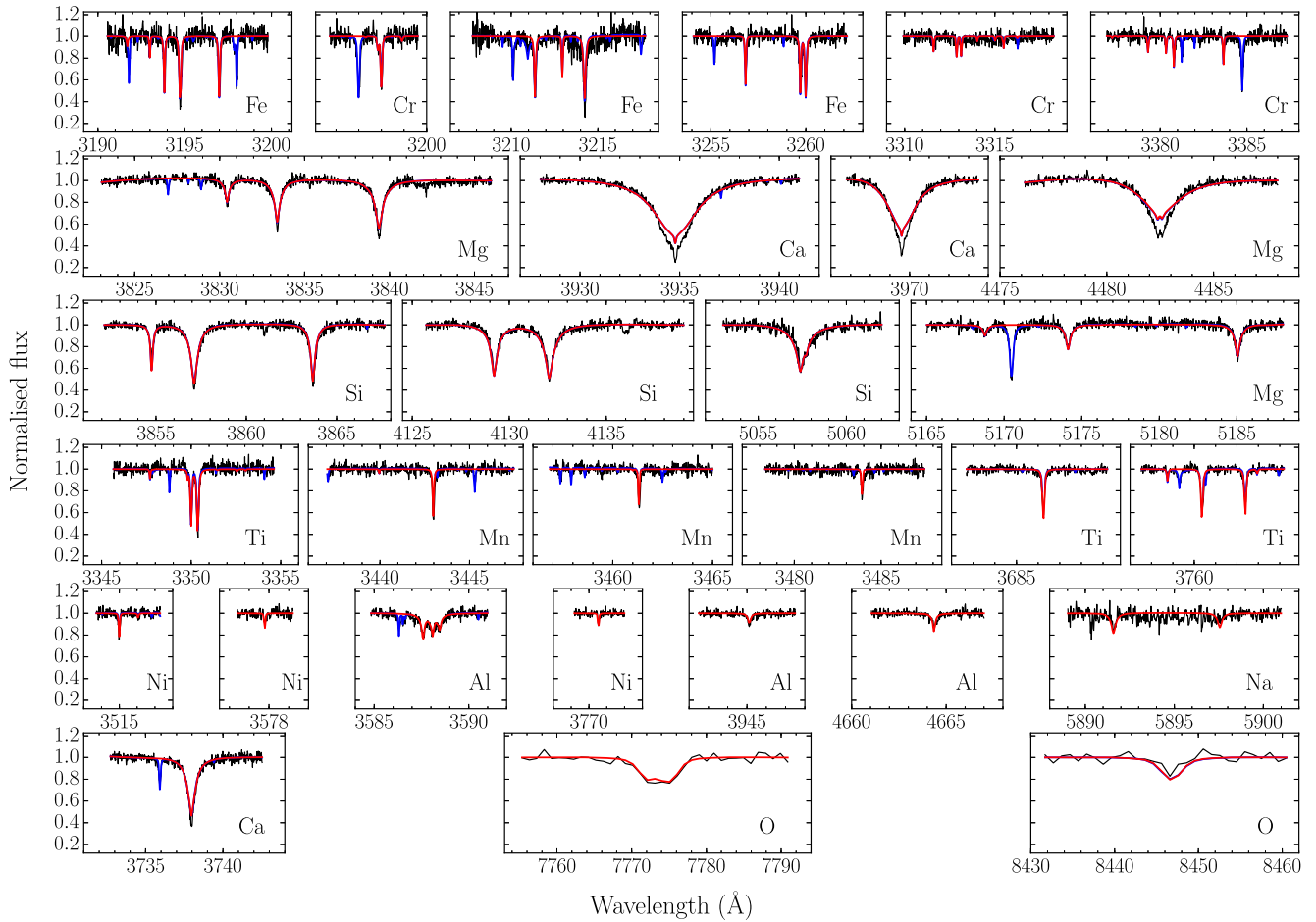


Figure 5. Some of the major absorption lines used to derive the photospheric metal abundances from the Keck spectrum. The exception are the oxygen lines that were only recorded in the WHT spectrum. The best-fitting model including all the metals found in the spectra and only the element labelled in each panel are overplotted in blue and red, respectively.

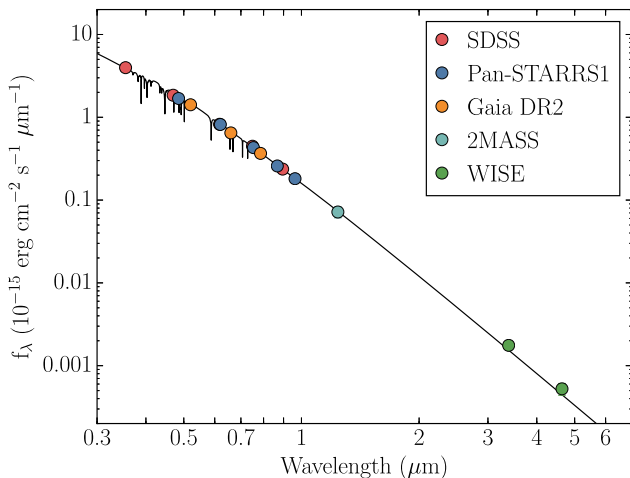


Figure 6. Spectral energy distribution of GD 424 with the photometric best-fitting white dwarf model (solid line) superimposed ($T_{\text{eff}} = 16913$ K, $\log g = 8.28$ dex, and $\log(\text{H}/\text{He}) = -3.68$ dex, see Section 3.3), illustrating the absence of an infrared excess. The synthetic spectrum has been scaled with the radius of the white dwarf ($R_{\text{WD}} = 0.0109 R_{\odot}$) and the *Gaia* DR2 parallax of the source, and reddened using $E(B - V) = 0.01$. The optical photometry points shown are from Table 1. The infrared data points come from 2MASS ($J = 16.585 \pm 0.151$ Vega mag; Skrutskie et al. 2006) and WISE ($W_1 = 16.629 \pm 0.059$ and $W_2 = 16.629 \pm 0.163$ Vega mag; Cutri et al. 2014).

envelopes and diffusion of Koester, Kepler & Irwin (2020) and the absolute lower limit on the total mass accreted (see Table 4) as the sum of the metal masses in the CVZ obtained with:

$$M_z = M_{\text{CVZ}} Z_{\text{ph,m}}(t). \quad (2)$$

In the following, we discuss each of the possible accretion states and derive the corresponding parent body abundances that we compare with those of planetary bodies in the inner Solar system and several DAZ and DB[A]Z white dwarfs with reliably inferred parent body abundances (i.e. which are unequivocally in the steady state).

4.1.1 Increasing state

We assume that GD 424 had an atmosphere composed solely of helium and hydrogen before the onset of accretion. Once mass transfer starts, the accreted material is rapidly and homogeneously mixed throughout the CVZ, but diffuses out of it on a much longer time-scale. Since the first term on the right side of equation (1) vanishes under this assumption ($Z_{\text{ph,m}}(0) = 0$), the time-dependent mass abundance of each metal in the CVZ during the increasing state is

$$Z_{\text{ph,m}}(t) = \frac{\tau_z \dot{M}_z}{M_{\text{CVZ}}} [1 - e^{-t/\tau_z}]. \quad (3)$$

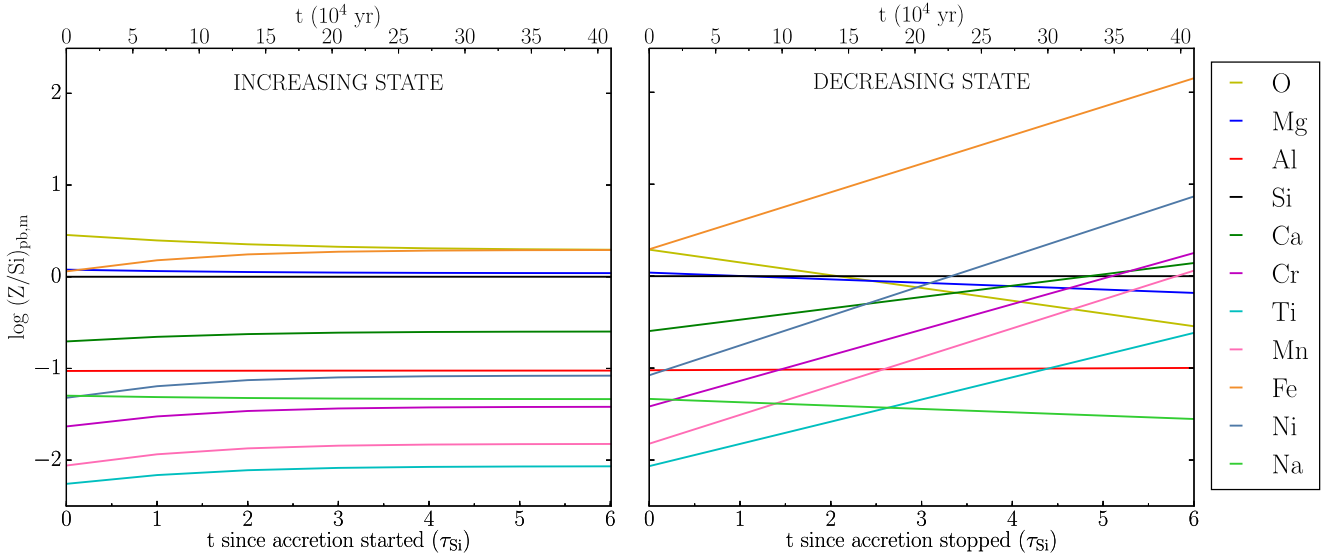


Figure 7. Deviation in the inferred parent body mass abundances given the uncertainty in the GD 424 accretion state. We assumed a simple scenario in which mass transfer switches on, remains constant for some time and then switches off, so the white dwarf can be found in any of three different states: the increasing, the steady, and the decreasing state. The elapsed time since accretion started or stopped (left-hand and right-hand panel, respectively) is measured in silicon diffusion time-scales. Note that the parent body abundances converge between the two panels, where the accretion state of the source is the steady state (see Section 4.1 for details). Left-hand panel: during the increasing state, material is accreted on to the white dwarf surface and the photospheric abundances increase linearly with time and are overall close to those of the parent body. Right-hand panel: during the decreasing state, the photospheric abundances decrease exponentially and proportional to the individual sinking time of each metal, resulting in rapidly increasing changes in the inferred parent body abundances as a function of the time since accretion stopped.

At the very beginning, the abundances within the whole CVZ, and hence also those measured from the photospheric spectrum, will be identical to those of the parent body. As time goes on, the heavier elements start to diffuse out faster compared to the lighter ones, and their relative abundances in the photosphere drop until accretion/diffusion equilibrium is reached after about five diffusion time-scales. At this point, the photospheric abundances of the elements that diffuse out faster become *lower* than in the parent body.

Taking into account the metal sinking times derived for GD 424, we estimated the parent body mass abundances $Z_{\text{pb},m}$ (which are mirrored in \dot{M}_z) in terms of the time since accretion started (Fig. 7, left-hand panel). As the system evolves, the abundances of titanium, chromium, manganese, iron, and nickel increase by ≈ 0.2 dex relative to silicon, while sodium, magnesium, aluminium, and calcium remain almost equal (they have sinking times similar to silicon). Oxygen is the only element whose abundance decreases by ≈ 0.2 dex. In the light of this outcome, for the increasing state the uncertainty in the time since accretion started does not result in a big difference on the inferred parent body abundances. In Figs 8 and 9, we compare the metal abundances of the planetesimal accreted by GD 424 (assuming that accretion started one τ_{Si} ago; blue triangles) with inner Solar system bodies, CI chondrites, and the debris abundances measured for a number of DAZ and DB[A]Z white dwarfs. We find that the abundances of the parent body resemble CI chondrites, with the only noticeable exception of an overabundance of calcium.

4.1.2 Steady state

After about five diffusion time-scales of continued mass transfer, the system reaches an accretion/diffusion equilibrium (Fig. 7, left-hand panel). For $t \gg \tau_z$, equation (1) becomes

$$Z_{\text{ph},m}(t) = \frac{\tau_z \dot{M}_z}{M_{\text{CVZ}}}. \quad (4)$$

We then inferred the relative parent body abundances assuming a steady state for GD 424. They are at most within 0.2 dex of those obtained assuming an increasing state (blue circles in Figs 8 and 9), and are consistent with CI chondrites and the bulk Earth. Again, the only outlier is a noticeable calcium overabundance.

4.1.3 Decreasing state

Once accretion stops, the metals with shorter diffusion times are depleted from the CVZ, and hence from the photosphere, faster. In this state, the second term of equation (1) vanishes, and the photospheric mass abundances can be computed as

$$Z_{\text{ph},m}(t) = Z_{\text{ph},m}(0) e^{-t/\tau_z}. \quad (5)$$

For a given elapsed time, and with the photospheric abundances that we measure today in the spectra of GD 424 ($Z_{\text{ph},m}(t)$, see Table 4), we can infer the mass abundances in the steady state before accretion stopped ($Z_{\text{ph},m}(0)$ in this case), and hence derive the parent body abundances calculating \dot{M}_z through equation (4).

We have computed the relative parent body abundances as a function of time since accretion stopped (Fig. 7, right-hand panel). In this state, the uncertainty in the precise moment when accretion stopped translates into very diverse parent body compositions. We find that the larger the disparity between sinking times, the greater the difference in relative abundances compared to the steady state values as time goes on. The diffusion times for magnesium, aluminium, and sodium are of the order of τ_{Si} and, thus, their relative abundances are not substantially affected by the time elapsed since accretion stopped. However, for the rest of the metals there is an ~ 1 -dex abundance change for a $3 \times \tau_{\text{Si}}$ difference in diffusion time. This results in drastic overabundances of both core elements (iron and nickel) and crust elements (calcium and titanium; squares in Figs 8 and 9).

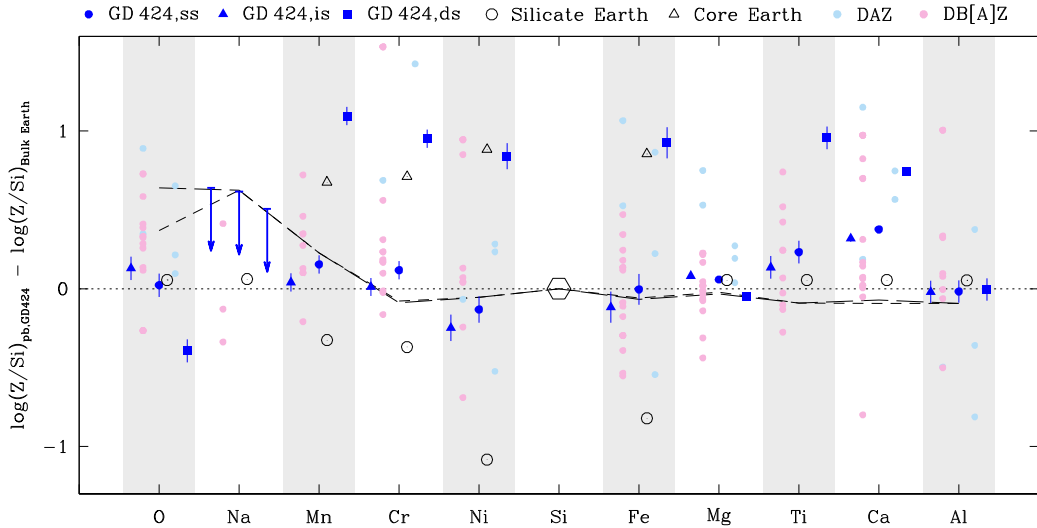


Figure 8. Abundance ratios relative to silicon (the large open hexagon) of the planetary body accreted by GD 424 for three different assumptions (is = increasing state, accretion started $1 \times \tau_{\text{Si}}$ ago; ss = steady state; ds = decreasing state, accretion stopped $3 \times \tau_{\text{Si}}$ ago). The abundance ratios are normalized by their corresponding bulk-Earth values (McDonough 2000) and the elements are sorted by increasing condensation temperature (Lodders 2003). The long and short dashed lines indicate Solar and CI chondrite abundances, respectively. For comparison, the abundance ratios measured in five DAZ white dwarfs (light blue symbols, from Gänsicke et al. 2012 and Melis & Dufour 2017), and 17 DB[A]Z white dwarfs (rosa symbols; Dufour et al. 2012; Jura et al. 2012; Farihi et al. 2013; Xu et al. 2013; Raddi et al. 2015; Wilson et al. 2015; Farihi et al. 2016; Xu et al. 2017, 2019; Fortin-Archambault, Dufour & Xu 2020; Hoskin et al. 2020) are displayed. The DAZ stars have extremely short diffusion time-scales, and are therefore in the steady state. For the DB[A]Z, the published abundances assuming steady state accretion are shown. If GD 424 were actually in the decreasing state, the abundance ratios of the accreted body would radically differ from any object in the Solar system, with large mass fractions of both core elements (Fe, Ni) and crust elements (Ca, Ti).

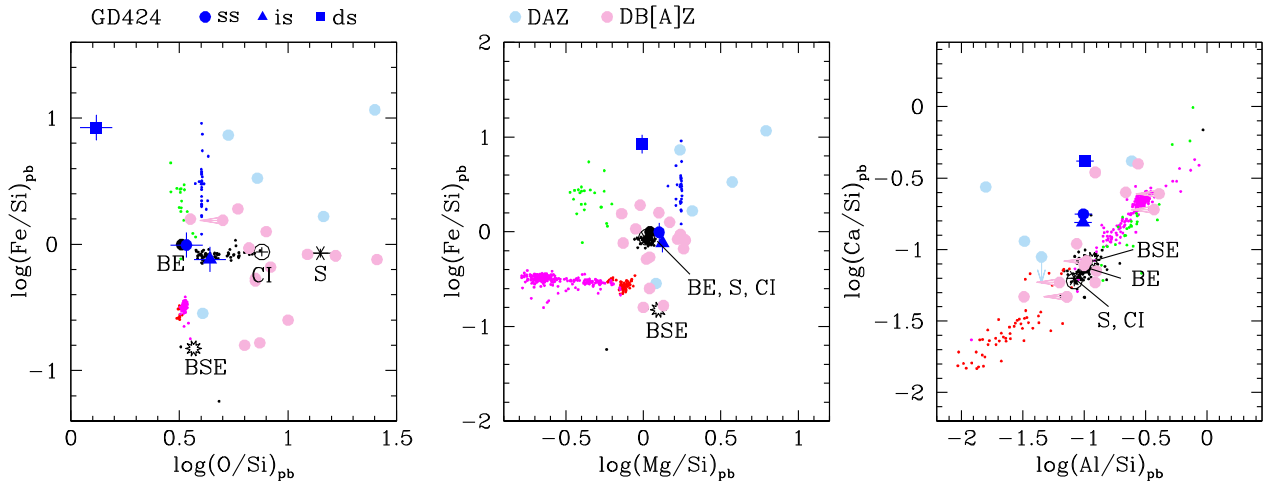


Figure 9. Abundance ratios relative to silicon of the planetesimal accreted by GD 424 for three different assumptions (is = increasing state, accretion started $1 \times \tau_{\text{Si}}$ ago; ss = steady state; ds = decreasing state, accretion stopped $3 \times \tau_{\text{Si}}$ ago). Shown for comparison are the abundance ratios of the same DAZ and DB[A]Z as in Fig. 8, those of the bulk Earth and bulk silicate Earth (BE and BSE; McDonough 2000), of the Sun and CI chondrites (S and CI; Lodders 2003), and of different types of meteorites (grey = carbonaceous Chondrites, green = Mesosiderites, blue = Pallasites, red = Diogenites, orange = Howardites, and magenta = Eucrites; Nittler et al. 2004).

4.1.4 Likely accretion state and parent body properties

The uncertainty in the time elapsed since accretion started/stopped results in different parent body compositions. For the increasing and steady states, the inferred parent body abundances are very similar and resemble those of CI chondrites and the bulk Earth (Figs 8 and 9). The only exception is the overabundance of calcium, which has been detected in a number of other debris-accreting white dwarfs, and tentatively interpreted as signature of heating of the parent bodies (Bonsor et al. 2020). However, this is not the case for the decreasing state: as long as minerals form in the same way as in the Solar

system (which appears so far to be the case, Doyle et al. 2019), there is no plausible composition of the parent body that could explain the measured photospheric abundances. Based on the inferred parent body abundances for the three states, we argue that GD 424 is more likely undergoing accretion, and hence is either in the increasing or in the steady state. It is also possible that accretion stopped recently ($t \lesssim 1 \times \tau_{\text{Si}} = 8.3 \times 10^4$ yr) and the photospheric abundances are still close to those in the steady state. Besides, in Section 4.2 we argue that the oxygen budget also points towards GD 424 being in the increasing or steady state since it exhibits a huge deficit (up to

Table 5. Absolute lower limits on the metal masses contained in the CVZ ($M_z, M_{z, ds}$) and accretion rates \dot{M}_z , assuming that GD 424 is in the increasing, steady, or decreasing state (is, ss, and ds, respectively). The M_z values are computed using equation (2) with the measured $Z_{ph, m}$ (Table 4) and are *independent* on the accretion state. Accretion rates (which reflect the parent body abundances) are computed from equation (3) for the increasing state assuming that accretion started $1 \times \tau_{Sj}$ ago, and from equation (4) for the steady state. If GD 424 is in the decreasing state, there will be no ongoing mass transfer. Instead, we computed $M_{z, ds}$ corresponding to the steady state *before* accretion switched off. For that purpose, we corrected the measured abundances with τ_z , assuming that accretion stopped $3 \times \tau_{Sj}$ ago (equation 5), and computed $M_{z, ds}$ using equation (4) and M_z, ds with equation (2).

| Element | M_z (10^{20} g) | \dot{M}_z (10^8 g s $^{-1}$) | | | $M_{z, ds}$ (10^{20} g) |
|----------------|-------------------------|---------------------------------------|------|-------|-------------------------------|
| | | is | ss | ds | |
| H ^a | 133 | – | – | – | – |
| O | 243 | 128 | 63.4 | 487 | 1874 |
| Na | <4.3 | <2.5 | <1.5 | <23 | <67 |
| Mg | 102 | 59 | 36 | 554 | 1586 |
| Al | 8 | 4.8 | 3.1 | 64 | 165 |
| Si | 85 | 51 | 33 | 654 | 1712 |
| Ca | 17 | 11 | 8.3 | 388 | 791 |
| Ti | 0.5 | 0.4 | 0.3 | 30 | 50 |
| Cr | 2.0 | 1.5 | 1.2 | 171 | 273 |
| Mn | 0.7 | 0.6 | 0.5 | 86 | 131 |
| Fe | 98 | 78 | 64 | 10913 | 16683 |
| Ni | 4.1 | 3.3 | 2.7 | 513 | 769 |
| Total | 698 | 340 | 214 | 13883 | 24101 |

^aNo mass accretion rate computed since hydrogen never diffuses out of the photosphere.

870 per cent) for the decreasing state, which is inconsistent with the rest of chemical abundances derived for GD 424.

In Table 5, we summarize the accretion properties of GD 424. The absolute lower limit on the total mass accreted, 7×10^{22} g, is computed from the measured $Z_{ph, m}$ (Table 4) and is *independent* of the accretion state and comparable to the Solar system asteroid 10 Hygiea (Mouret, Hestroffer & Mignard 2007). The total accretion rate is at least $\simeq 2 \times 10^{10}$ g s $^{-1}$ (in the steady state, a factor ≈ 1.5 to 65 higher than in the increasing and decreasing states, respectively). This places the accretion rate of GD 424 among the highest observed (see fig. 5 in Bergfors et al. 2014).

4.2 Oxygen balance

The abundance studies of white dwarfs accreting planetary debris (Zuckerman et al. 2007; Gänsicke et al. 2012; Swan et al. 2019) have provided conclusive evidence (with very few exceptions, Xu et al. 2017) that the parent bodies are rocky, broadly resembling objects in the inner Solar system (Jura & Young 2014). A key aspect in the formation of rocky bodies and their subsequent evolution is the oxygen fugacity of their birth environment. Doyle et al. (2019) concluded that the extra-Solar planetesimals studied so far appear to have very similar geochemical properties to the rocky planets and asteroids in the Solar system.

Given that we detect the major rock-forming elements in GD 424, and assuming the same mineralogy as in the Solar system, it is hence possible to probe for the water content of the accreted planetesimal. We thereby computed the oxygen budget of the parent body disrupted by GD 424 following Klein et al. (2010, 2011), i.e. we account for oxygen carried into the white dwarf atmosphere in the form of MgO, Al₂O₃, SiO₂, CaO, TiO₂, Cr₂O₃, MnO, FeO, and NiO.

Any leftover oxygen would then require an additional carrier. Given the existing detections and upper limits on the volatile content of exo-planetesimals accreted by white dwarfs (Gänsicke et al. 2012; Xu et al. 2013, 2014), water, either in the form of ice or hydrated minerals, is the only plausible explanation for the excess oxygen detected in a small number of systems (Farihi et al. 2013; Raddi et al. 2015). The main uncertainty in this approach is the fraction of metallic iron and nickel, where a mixture of Fe and FeO, and Ni and NiO, are most likely (Doyle et al. 2019).

Hence, using the parent body abundances derived for the increasing, steady, and decreasing states (Table 5), we computed the oxygen budget for the two extreme scenarios. In the first case, if all the iron and nickel has a metallic origin, we found a 16 per cent oxygen excess for the increasing state, while the steady and decreasing state showed a 7 and 196 per cent oxygen deficit, respectively. In the second case, assuming all the iron and nickel in the CVZ of GD 424 were accreted in the form of minerals, the oxygen budget translates into a 2, 37, and 870 per cent oxygen deficit for the increasing, steady, and decreasing state, respectively. For context, under the assumption of an entirely mineral origin for Fe and Ni, the bulk Earth has an oxygen deficit of 36 per cent (McDonough 2000), corresponding roughly to the core mass of the Earth.

Most likely, reality lies in between these two extreme scenarios, where iron and nickel were partly acquired from minerals and also as metals. Given the numbers for the oxygen budget above and the close resemblance of the overall abundances of GD 424 to those of the bulk Earth (Figs 8 and 9), we can rule out that the system has spent a significant amount of time in the decreasing state. Hence, GD 424 is most likely accreting dry, rocky debris in either the increasing or steady state.

4.3 Trace hydrogen

A large fraction of all DB white dwarfs display trace amounts of photospheric hydrogen, with both the abundance and total mass of hydrogen in the CVZ broadly showing an increasing trend with growing cooling age (Voss et al. 2007; Bergeron et al. 2011). Hypotheses put forward to explain the observations of these DBA white dwarfs include the mixing of residual hydrogen left over from the evolution of the white dwarf progenitor (Koester & Kepler 2015), accretion from the interstellar medium (Alcock & Illarionov 1980), accretion of water-rich planetary debris (Gentile Fusillo et al. 2017), and hydrogen dredge-up from deeper envelope layers (Rolland et al. 2020). Interstellar accretion has been ruled out on the basis of various reasons (Friedrich, Jordan & Koester 2004; Farihi et al. 2010), and too little detailed work is so far available on the dredge-up scenario, so we do not discuss those two possibilities.

Both the hydrogen abundance of GD 424, $\log(H/He) = -3.65$ dex, and the total mass of hydrogen contained in the CVZ, $M_H = 1.33 \times 10^{22}$ g, are, for its temperature, among the highest values found for the known DBA white dwarfs [see fig. 5 in Rolland, Bergeron & Fontaine (2018) and fig. 6 in Gentile Fusillo et al. (2017), respectively]. Such a large amount of hydrogen is incompatible with both the convective dilution of residual hydrogen [see figs 14 and 7 of Rolland et al. (2018) and Rolland et al. (2020), respectively] and accretion at a quasi-steady rate [see figs 15 and 8 of Rolland et al. (2018) and Rolland et al. (2020), respectively]: GD 424 would have evolved into a DA white dwarf.

As noted by Rolland et al. (2018), the only possible way to explain the large amount of trace hydrogen in DBA white dwarfs such as GD 424 is that accretion only occurred *after* the white dwarf has cooled enough to develop a CVZ that is sufficiently deep to maintain

the hydrogen mixed. Gauging from the reflection points in fig. 15 in Rolland et al. (2018), we estimate that the hydrogen present in the CVZ of GD 424 today must have been accreted within the last 50–100 Myr. GD 424 follows the correlation found by Gentile Fusillo et al. (2017) that DB white dwarfs with large amounts of trace hydrogen are also contaminated by metals, corroborating that accretion of planetary debris is indeed at least contributing to the hydrogen detected in their CVZ.¹³

However, from the discussion in the previous subsections, it is apparent that GD 424 is currently accreting the debris of a dry parent body, which does not contribute to the M_{H} in the envelope. Thus, a planetary origin of M_{H} in GD 424 requires previous accretion of water-rich material.

Assuming that all the hydrogen in the CVZ of GD 424 was accreted in the form of water implies a total mass of water of $M_{\text{H}_2\text{O}} \simeq 1.19 \times 10^{23}$ g, and hence an associated oxygen mass of $M_{\text{O}} \simeq 1.06 \times 10^{23}$ g. Whereas this is an order of magnitude larger than the amount of oxygen currently held in the CVZ, because of the short diffusion timescale of oxygen (1.22×10^5 yr), a large, water-rich body might have been accreted as little as $\simeq 1$ Myr ago without leaving a noticeable trace of the episode that delivered the hydrogen to GD 424. So far, only a handful of metal-polluted white dwarfs are known to be under ongoing accretion of water-rich planetesimals (Farihi et al. 2013; Raddi et al. 2015), and hence it is more likely that part of the M_{H} was acquired in just one earlier accretion event of a massive planetesimal rather than in multiple episodes.¹⁴

5 CONCLUSIONS

We presented the discovery and chemical abundances analysis of GD 424, a metal-polluted DBA white dwarf with one of the largest amounts of trace hydrogen measured so far among white dwarfs with similar temperatures: $M_{\text{H}} = 1.33 \times 10^{22}$ g.

To determine the photospheric parameters of GD 424, we used a hybrid method to simultaneously fit a grid of synthetic spectra, survey photometry, and the *Gaia* DR2 parallax to our WHT optical spectrum. This analysis combines the spectroscopic sensitivity to the chemical composition, $\log(\text{H}/\text{He})$, with that to T_{eff} and $\log g$ of the photometry. The photospheric parameters are $T_{\text{eff}} = 16\,560 \pm 75$ K, $\log g = 8.25 \pm 0.02$ dex, and $\log(\text{H}/\text{He}) = -3.65 \pm 0.03$ dex. These yield a white dwarf mass, radius, and cooling age of $M_{\text{WD}} = 0.77 \pm 0.01 M_{\odot}$, $R_{\text{WD}} = 0.0109 \pm 0.0001 R_{\odot}$, and $\tau_{\text{cool}} = 215 \pm 10$ Myr, respectively.

We also obtained high-resolution spectroscopy with the Keck telescope. We identified a total of 11 metals in the Keck and WHT spectra of GD 424: oxygen, sodium, manganese, chromium, nickel, silicon, iron, magnesium, titanium, calcium, and aluminium, whose presence we attribute to accretion of a planetary body on to the white dwarf.

We measured the photospheric metal abundances and used them to estimate the parent body composition. Both the inferred parent body abundances and the oxygen balance suggest that the metals

were most likely acquired in a recent or ongoing accretion event, and thus the system is in the increasing or the steady state. The estimated composition of the parent body is consistent with both CI chondrites and the bulk Earth. Hence, future observations to measure the abundance of volatile elements are encouraged to differentiate between these two alternatives.

The composition of the parent body did not reveal an oxygen excess. This suggests that the large amount of trace hydrogen is probably the result of the earlier accretion of water-rich planetesimals.

ACKNOWLEDGEMENTS

PI acknowledges financial support from the Spanish Ministry of Economy and Competitiveness (MINECO) under the 2015 Severo Ochoa Programme MINECO SEV-2015-0548. OT was supported by a Leverhulme Trust Research Project Grant. BTG was supported by the UK STFC grant ST/T000406/1 and by a Leverhulme Research Fellowship. PR-G acknowledges support from the State Research Agency (AEI) of the Spanish Ministry of Science, Innovation and Universities (MCIU) and the European Regional Development Fund (FEDER) under grant AYA2017-83383-P. This paper is based on observations made in the Observatorios de Canarias del IAC with the William Herschel Telescope operated on the island of La Palma by the Isaac Newton Group of Telescopes in the Observatorio del Roque de los Muchachos. Some of the data presented herein were obtained at the W. M. Keck Observatory from telescope time allocated to the National Aeronautics and Space Administration (NASA; program 60/2019B_N094, PI Redfield). We acknowledge the use of Tom Marsh’s PAMELA and MOLLY. This research has made use of the SVO Filter Profile Service (<http://svo2.cab.inta-csic.es/theory/fps/>) supported from the Spanish MINECO through grant AYA2017-84089-P.

DATA AVAILABILITY

The data underlying this article will be shared on reasonable request to the corresponding author.

REFERENCES

- Alcock C., Illarionov A., 1980, *ApJ*, 235, 541
 Bergeron P., Saffer R. A., Liebert J., 1992, *ApJ*, 394, 228
 Bergeron P. et al., 2011, *ApJ*, 737, 28
 Bergfors C., Farihi J., Dufour P., Rocchetto M., 2014, *MNRAS*, 444, 2147
 Bonsor A., Farihi J., Wyatt M. C., van Lieshout R., 2017, *MNRAS*, 468, 154
 Bonsor A., Carter P. J., Hollands M., Gänsicke B. T., Leinhardt Z., Harrison J. H. D., 2020, *MNRAS*, 492, 2683
 Caiazzo L., Heyl J. S., 2017, *MNRAS*, 469, 2750
 Coutu S., Dufour P., Bergeron P., Blouin S., Loranger E., Allard N. F., Dunlap B. H., 2019, *ApJ*, 885, 74
 Cukanovaite E., Tremblay P.-E., Freytag B., Ludwig H.-G., Bergeron P., 2018, *MNRAS*, 481, 1522
 Cukanovaite E., Tremblay P.-E., Freytag B., Ludwig H.-G., Fontaine G., Brassard P., Toloza O., Koester D., 2019, *MNRAS*, 490, 1010
 Cutri R. M., et al., 2014, II/328, VizieR Online Data Catalog,
 Doyle A. E., Young E. D., Klein B., Zuckerman B., Schlichting H. E., 2019, *Science*, 366, 356
 Dufour P., Kilic M., Fontaine G., Bergeron P., Melis C., Bochanski J., 2012, *ApJ*, 749, 6
 Farihi J., Barstow M. A., Redfield S., Dufour P., Hambly N. C., 2010, *MNRAS*, 404, 2123
 Farihi J., Gänsicke B. T., Koester D., 2013, *Science*, 342, 218

¹³Water within icy planetesimals is likely to survive the evolution of the white dwarf progenitor through the giant branches (Malamud & Perets 2016, 2017a, b).

¹⁴A speculative scenario in which M_{H} was delivered by multiple much smaller planetesimals could invoke volatile-rich Kuiper-belt-like objects (Caiazzo & Heyl 2017), possibly perturbed by an unseen wide companion (Stephan, Naoz & Zuckerman 2017). However, considering that so far only one white dwarf is known to accrete a volatile-rich planetesimal (Xu et al. 2017), and dynamical arguments (Veras et al. 2014b), such a scenario appears unlikely.

- Farihi J., Koester D., Zuckerman B., Vican L., Gänsicke B. T., Smith N., Walth G., Breedt E., 2016, *MNRAS*, 463, 3186
- Fontaine G., Brassard P., Bergeron P., 2001, *PASP*, 113, 409
- Foreman-Mackey D., Hogg D. W., Lang D., Goodman J., 2013, *PASP*, 125, 306
- Fortin-Archambault M., Dufour P., Xu S., 2020, *ApJ*, 888, 47
- Friedrich S., Jordan S., Koester D., 2004, *A&A*, 424, 665
- Fukugita M., Ichikawa T., Gunn J. E., Doi M., Shimasaku K., Schneider D. P., 1996, *AJ*, 111, 1748
- Gaia Collaboration, 2018, *A&A*, 616, A1
- Gänsicke B. T., Koester D., Farihi J., Girven J., Parsons S. G., Breedt E., 2012, *MNRAS*, 424, 333
- Genest-Beaulieu C., Bergeron P., 2019, *ApJ*, 871, 169
- Gentile Fusillo N. P., Gänsicke B. T., Farihi J., Koester D., Schreiber M. R., Pala A. F., 2017, *MNRAS*, 468, 971
- Gentile Fusillo N. P. et al., 2019, *MNRAS*, 482, 4570
- Girven J., Brinkworth C. S., Farihi J., Gänsicke B. T., Hoard D. W., Marsh T. R., Koester D., 2012, *ApJ*, 749, 154
- Holberg J. B., Bergeron P., 2006, *AJ*, 132, 1221
- Hollands M. A., Koester D., Alekseev V., Herbert E. L., Gänsicke B. T., 2017, *MNRAS*, 467, 4970
- Hollands M. A., Gänsicke B. T., Koester D., 2018, *MNRAS*, 477, 93
- Horne K., 1986, *PASP*, 98, 609
- Hoskin M. J. et al., 2020, *MNRAS*, 499, 171
- Jura M., 2003, *ApJ*, 584, L91
- Jura M., Young E. D., 2014, *Annu. Rev. Earth Planet. Sci.*, 42, 45
- Jura M., Xu S., Klein B., Koester D., Zuckerman B., 2012, *ApJ*, 750, 69
- Kawka A., Vennes S., 2005, in Koester D., Moehler S., eds, *ASP Conf. Ser.* Vol. 334, 14th European Workshop on White Dwarfs. Astron. Soc. Pac., San Francisco, p. 101
- Klein B., Jura M., Koester D., Zuckerman B., Melis C., 2010, *ApJ*, 709, 950
- Klein B., Jura M., Koester D., Zuckerman B., 2011, *ApJ*, 741, 64
- Koester D., 2009, *A&A*, 498, 517
- Koester D., 2010, *Mem. Soc. Astron. Ital.*, 81, 921
- Koester D., Kepler S. O., 2015, *A&A*, 583, A86
- Koester D., Schulz H., Wegner G., 1981, *A&A*, 102, 331
- Koester D., Napiwotzki R., Voss B., Homeier D., Reimers D., 2005, *A&A*, 439, 317
- Koester D., Gänsicke B. T., Farihi J., 2014, *A&A*, 566, A34
- Koester D., Kepler S. O., Irwin A. W., 2020, *A&A*, 635, A103
- Kowalski P. M., Saumon D., 2006, *ApJ*, 651, L137
- Lindgren L., et al., 2020, *A&A*, in press
- Lodders K., 2003, *ApJ*, 591, 1220
- McDonough W., 2000, in Teisseyre R., Majewski E., eds, *Earthquake Thermodynamics and Phase Transformation in the Earth's Interior*. Elsevier Science/Academic Press, Amsterdam, Netherlands, p. 5
- Malamud U., Perets H. B., 2016, *ApJ*, 832, 160
- Malamud U., Perets H. B., 2017a, *ApJ*, 842, 67
- Malamud U., Perets H. B., 2017b, *ApJ*, 849, 8
- Marsh T. R., 1989, *PASP*, 101, 1032
- Melis C., Dufour P., 2017, *ApJ*, 834, 1
- Mouret S., Hestroffer D., Mignard F., 2007, *A&A*, 472, 1017
- Nittler L. R., McCoy T. J., Clark P. E., Murphy M. E., Trombka J. I., Jarosewich E., 2004, *Antarct. Meteorite Res.*, 17, 231
- Raddi R., Gänsicke B. T., Koester D., Farihi J., Hermes J. J., Scaringi S., Breedt E., Girven J., 2015, *MNRAS*, 450, 2083
- Rolland B., Bergeron P., Fontaine G., 2018, *ApJ*, 857, 56
- Rolland B., Bergeron P., Fontaine G., 2020, *ApJ*, 889, 87
- Schatzman E., 1948, *Nature*, 161, 61
- Skrutskie M. F. et al., 2006, *AJ*, 131, 1163
- Stephan A. P., Naoz S., Zuckerman B., 2017, *ApJ*, 844, L16
- Swan A., Farihi J., Koester D., Holland S. M., Parsons S., Cauley P. W., Redfield S., Gänsicke B. T., 2019, *MNRAS*, 490, 202
- Tonry J. L. et al., 2012, *ApJ*, 750, 99
- Tremblay P.-E., Bergeron P., Gianninas A., 2011, *ApJ*, 730, 128
- Tremblay P.-E., Cukanovaite E., Gentile Fusillo N. P., Cunningham T., Hollands M. A., 2019, *MNRAS*, 482, 5222
- van Dokkum P. G., 2001, *PASP*, 113, 1420
- Veras D., Leinhardt Z. M., Bonsor A., Gänsicke B. T., 2014a, *MNRAS*, 445, 2244
- Veras D., Shannon A., Gänsicke B. T., 2014b, *MNRAS*, 445, 4175
- Vogt S. S. et al., 1994, in Crawford D. L., Craine E. R., eds, *Proc. SPIE Conf. Ser.* Vol. 2198, Instrumentation in Astronomy VIII. SPIE, Bellingham, p. 362
- Voss B., Koester D., Napiwotzki R., Christlieb N., Reimers D., 2007, *A&A*, 470, 1079
- Wilson D. J., Gänsicke B. T., Koester D., Toloza O., Pala A. F., Breedt E., Parsons S. G., 2015, *MNRAS*, 451, 3237
- Wilson T. G., Farihi J., Gänsicke B. T., Swan A., 2019, *MNRAS*, 487, 133
- Wyatt M. C., Farihi J., Pringle J. E., Bonsor A., 2014, *MNRAS*, 439, 3371
- Xu S., Jura M., Klein B., Koester D., Zuckerman B., 2013, *ApJ*, 766, 132
- Xu S., Jura M., Koester D., Klein B., Zuckerman B., 2014, *ApJ*, 783, 79
- Xu S., Zuckerman B., Dufour P., Young E. D., Klein B., Jura M., 2017, *ApJ*, 836, L7
- Xu S., Dufour P., Klein B., Melis C., Monson N. N., Zuckerman B., Young E. D., Jura M. A., 2019, *AJ*, 158, 242
- Zuckerman B., Koester D., Reid I. N., Hüensch M., 2003, *ApJ*, 596, 477
- Zuckerman B., Koester D., Melis C., Hansen B. M., Jura M., 2007, *ApJ*, 671, 872
- Zuckerman B., Melis C., Klein B., Koester D., Jura M., 2010, *ApJ*, 722, 725

This paper has been typeset from a $\text{\TeX}/\text{\LaTeX}$ file prepared by the author.