

## SHORT COMMUNICATION

# A network physiology approach to oxygen saturation variability during normobaric hypoxia

Yuji Jiang<sup>1</sup> | Joseph T. Costello<sup>2</sup>  | Thomas B. Williams<sup>2</sup>  | Nawamin Panyapian<sup>1</sup> | Amar S. Bhogal<sup>1</sup> | Michael J. Tipton<sup>2</sup>  | Jo Corbett<sup>2</sup> | Ali R. Mani<sup>1</sup> 

<sup>1</sup> Network Physiology Laboratory, UCL Division of Medicine, University College London, London, UK

<sup>2</sup> Extreme Environments Laboratory, School of Sport, Health and Exercise Science, University of Portsmouth, Portsmouth, UK

## Correspondence

Joseph T. Costello, Extreme Environments Laboratory, School of Sport, Health and Exercise Science, University of Portsmouth, Portsmouth PO1 2ER, UK.

Email: [joe.costello@port.ac.uk](mailto:joe.costello@port.ac.uk)

Ali R. Mani, Network Physiology Lab, Division of Medicine, Royal Free Campus, Rowland Hill Street, UCL, London NW3 2PF, UK.

Email: [a.r.mani@ucl.ac.uk](mailto:a.r.mani@ucl.ac.uk)

## Funding information

University of Portsmouth; UCL

Edited by: Michael White

## Abstract

Peripheral capillary oxygen saturation ( $S_{pO_2}$ ) exhibits a complex pattern of fluctuations during hypoxia. The physiological interpretation of  $S_{pO_2}$  variability is not well understood. In this study, we tested the hypothesis that  $S_{pO_2}$  fluctuation carries information about integrated cardio-respiratory control in healthy individuals using a network physiology approach. We explored the use of transfer entropy in order to compute the flow of information between cardio-respiratory signals during hypoxia. Twelve healthy males (mean (SD) age 22 (4) years) were exposed to four simulated environments (fraction of inspired oxygen ( $F_{IO_2}$ ): 0.12, 0.145, 0.17, and 0.2093) for 45 min, in a single blind randomized controlled design. The flow of information between different physiological parameters ( $S_{pO_2}$ , respiratory frequency, tidal volume, minute ventilation, heart rate, end-tidal pressure of  $O_2$  and  $CO_2$ ) were analysed using transfer entropy. Normobaric hypoxia was associated with a significant increase in entropy of the  $S_{pO_2}$  time series. The transfer entropy analysis showed that, particularly at  $F_{IO_2}$  0.145 and 0.12, the flow of information between  $S_{pO_2}$  and other physiological variables exhibits a bidirectional relationship. While reciprocal interactions were observed between different cardio-respiratory parameters during hypoxia,  $S_{pO_2}$  remained the main hub of this network.  $S_{pO_2}$  fluctuations during graded hypoxia exposure carry information about cardio-respiratory control. Therefore,  $S_{pO_2}$  entropy analysis has the potential for non-invasive assessment of the functional connectivity of respiratory control system in various healthcare settings.

## KEYWORDS

altitude, hypoxic, sample entropy,  $S_{pO_2}$ , transfer entropy

## 1 | INTRODUCTION

Peripheral capillary oxygen saturation ( $S_{pO_2}$ ) is measured non-invasively and is extensively used for monitoring patients in clinical

settings. Although the absolute value of  $S_{pO_2}$  is currently used by clinicians,  $S_{pO_2}$  time series exhibit a complex pattern of fluctuations which may carry useful information (Bhogal & Mani, 2017). For example, it has previously been reported that the inclusion of

This is an open access article under the terms of the [Creative Commons Attribution](https://creativecommons.org/licenses/by/4.0/) License, which permits use, distribution and reproduction in any medium, provided the original work is properly cited.

© 2020 The Authors. *Experimental Physiology* published by John Wiley & Sons Ltd on behalf of The Physiological Society

$S_{pO_2}$  variability data into routine clinical practice can predict the requirement of hospitalization in children with acute illness (Garde et al., 2016). Likewise a recent study has demonstrated that  $S_{pO_2}$  fluctuation exhibits a fractal-like pattern which can assist in the diagnosis of sleep apnoea (Vaquerizo-Villar et al., 2018).

The complexity of physiological time series data can be measured by computing the degree of irregularity of the signal (i.e. entropy) (Pincus, 1991). By applying entropy analysis to  $S_{pO_2}$  time series data, we have previously demonstrated that  $S_{pO_2}$  entropy, and not its absolute value (or mean), can distinguish older healthy individuals from their younger counterparts (Bhagal & Mani, 2017). More recently, we have demonstrated that as the concentration of inspired oxygen ( $F_{IO_2}$ ) is decreased,  $S_{pO_2}$  entropy increases, and there is a strong significant negative correlation between mean  $S_{pO_2}$  and its entropy during normobaric hypoxic exposure (Costello et al., 2020). In addition,  $S_{pO_2}$  entropy, but not mean  $S_{pO_2}$ , was correlated with perception of breathlessness in otherwise healthy individuals when hypoxic (Costello et al., 2020).

The entropy of a physiological time series is a measure of how much total information the signal contains (Mitchell, 2009; Pincus, 1994). Thus, it is reasonable to suggest that  $S_{pO_2}$  fluctuations may carry information about the integrity of the respiratory system. Although this hypothesis is plausible, it has not been systematically investigated using empirical data. Respiration is tightly controlled and requires transfer of information from chemoreceptors, which are centrally and peripherally located. Tissue oxygenation involves a complex network of feedback loops that integrate different components of both the cardiovascular and respiratory systems. Thus, respiratory rate, tidal volume, heart rate and partial pressure of oxygen and carbon dioxide interact in a non-linear fashion to maintain respiratory homeostasis (Tipton, Harper, Paton, & Costello, 2017). We have recently described the physiological response to graded normobaric hypoxia in healthy individuals and found that while  $S_{pO_2}$  variability is significantly increased, mean respiratory rate, tidal volume and heart rate were not markedly altered during graded hypoxia when resting (Costello et al., 2020). After completing these analyses and publishing the findings (Costello et al., 2020), we subsequently became curious to discover if useful information is present in the cardio-respiratory time series which is not reflected in their mean values. An ideal method for assessing the complex interactions in a control system is to measure the causal relationship between physiological signals. This can be achieved by measuring the flow of information between parallel time series. Schreiber developed an analytical tool (i.e. transfer entropy) to detect the directed exchange of information between two systems (Schreiber, 2000). Several groups have extended this concept and demonstrated that measures of information transfer may serve as proxies for causal interactions (Barnett, Barrett, & Seth, 2009; Wibral, Vicente, & Lindner, 2014). This motivated us to look at the interaction between  $S_{pO_2}$  and other cardio-respiratory time series during a hypoxic challenge using transfer entropy.

Network physiology is an emerging field that reveals the topology of functional interactions between different components of physiological systems (Bashan, Bartsch, Kantelhardt, Havlin, & Ivanov, 2012; Kanter

## New Findings

- **What is the central question of this study?**

What is the physiological interpretation of  $S_{pO_2}$  fluctuations observed during normobaric hypoxia in healthy individuals?

- **What is the main finding and its importance?**

There is a significant flow of information between  $S_{pO_2}$  and other cardio-respiratory time series during graded hypoxia. Analysis of the pattern of  $S_{pO_2}$  variations has potential for non-invasive assessment of the engagement of respiratory control system in health and disease.

et al., 2015). By measuring the information that is exchanged between different physiological parameters, we could potentially assess the connectivity of physiological control (Buchman, 2002; Pincus, 1994). Transfer entropy has the potential to compute bidirectional interaction between cardio-respiratory time series and thus reveal the network of interaction between different physiological parameters (Faes, Marinazzo, Montalto, & Nollo, 2014; Marzbanrad, Kimura, Palaniswami, & Khandoker, 2015). Therefore, in this study, we tested the hypothesis that  $S_{pO_2}$  fluctuation carries information about cardio-respiratory control in healthy individuals using a network physiology approach. In order to address this hypothesis, the engagement of different physiological parameters, i.e. respiratory frequency ( $f_R$ ), tidal volume ( $V_T$ ), minute ventilation ( $\dot{V}_E$ ), heart rate (HR),  $S_{pO_2}$ , end-tidal pressure of  $O_2$  ( $P_{ETO_2}$ ) and  $CO_2$  ( $P_{ETCO_2}$ ) were analysed using transfer entropy in healthy volunteers who were exposed to normobaric hypoxia.

## 2 | METHOD

### 2.1 | Ethics

All participants provided their written informed consent before taking part in this study. The experimental procedures adhered to the standards set by the latest revision of the *Declaration of Helsinki*, except for registration in a database, and were approved by the Science Faculty Ethics Committee of The University of Portsmouth (project number 2017-025).

### 2.2 | Experimental design

This study was part of a larger project investigating effects of normobaric hypoxia on physiological and cognitive function and the experimental design has been described in detail elsewhere (Costello

et al., 2020; Williams et al., 2019). A convenience sample of 12 healthy males participated in this study, with mean (SD) age 22 (4) years, height 1.78 (0.05) m, mass 75 (9) kg, FEV1/FVC ratio 85 (5)%. All participants were non-smokers, free of any cardiovascular, respiratory and cerebrovascular diseases, were not diabetic, and were not taking any prescription drugs at the time of or before participation. A within-participant, single blind randomized controlled design was employed. Participants were required to visit the laboratory on five occasions (one health screening and four experimental conditions). For each experimental condition, participants were exposed to normobaric hypoxia for 45 min in a purpose-built hypoxic chamber (Sporting Edge, Sheffield on Loddon, UK). The fraction of inspired oxygen ( $F_{IO_2}$ ) values were 0.2093 ( $\approx$  sea level), 0.17 (equivalent to  $\sim$ 1600 m), 0.145 ( $\sim$ 3000 m), and 0.12 ( $\sim$ 4500 m). If  $P_{ETO_2}$  or  $P_{ETCO_2}$  fell below 45 and 25 mmHg, respectively, for three consecutive breaths, or if  $S_{pO_2}$  went below 65%, participants were given a supply of normoxic air and subsequently removed from the chamber. Experimental conditions were separated by a minimum of 48 h and conducted at the same time of day.

### 2.3 | Physiological recording

Participants' cardiorespiratory parameters, including  $f_R$ ,  $V_T$ ,  $\dot{V}_E$ , HR,  $S_{pO_2}$  (using an ear clip),  $P_{ETO_2}$  and  $P_{ETCO_2}$ , were measured and monitored non-invasively for 45 min using a metabolic cart (Quark CPET, Cosmed, Rome, Italy). During each experimental condition participants wore an oro-nasal facemask for complete breath collection (7400 series Vmask, Hans Rudolph, Shawnee, KS, USA). The sampling rate was one sample per respiratory cycle. We have previously demonstrated that it takes  $\sim$ 15 min for participants to acclimate with the experimental setting during each condition (Costello et al., 2020). Thus, time series taken in the last 30 min were used for analysis in this study (i.e. minutes 15–45). A digital filter was developed in MATLAB (The MathWorks Inc., Natick, MA, USA, R2019b) and applied to remove any missing data and replace them with the overall average value of the data thread. Data were discarded if missing data equated to more than 5% of total length of the time series. Accordingly, one participant had more than 5% missing data and was subsequently discarded from the analyses.

#### 2.3.1 | Sample entropy calculation

Sample entropy of physiological time series was calculated using an algorithm developed in MATLAB (Goldberger et al., 2000). Sample entropy is a measure of irregularity of a time series by calculating the logarithmic likelihood that a sequence with window length,  $m$ , and degree of tolerance,  $r$ , will be repeated at a later time. In the present analysis,  $m$  and  $r$  were set at 2 (window length) and 0.2 ( $0.2 \times$  SD) as described previously (Bhagal & Mani, 2017; Richman & Moorman, 2000).

#### 2.3.2 | Transfer entropy

Transfer entropy reflects the measures of causal relationship between two parallel time series (Barnett et al., 2009; Schreiber, 2000). In this study, it was employed to quantify the level of directed influence and information transfer that a data segment of one physiological time series can have on the future progress of another in a different time series. We used an open source function in MATLAB to compute the transfer entropy between two parallel time series (Lee et al., 2012; code of this function can be found at PhysioNet: <https://www.physionet.org/content/tewp/1.0.0/>; Goldberger et al., 2000). Probability density estimation was based on Gaussian kernel density estimation. Calculation of transfer entropy requires parameters such as the time lag, which was set to 1. The number of equally spaced points along each dimension where probabilities were estimated was set to 10 (Lee et al., 2012).

#### 2.3.3 | Statistical analysis

Data are presented as the mean (SD), unless otherwise stated. The distribution of data was assessed using descriptive methods (skewness, outliers and distribution plots) and inferential statistics (Shapiro-Wilk test). A one-way ANOVA followed by Tukey's *post hoc* test was used to compare the physiological indices at different  $F_{IO_2}$  values. Statistical analyses were carried out using MATLAB and GraphPad Prism (version 7, GraphPad Software Inc., San Diego, CA USA).  $P < 0.05$  was considered statistically significant.

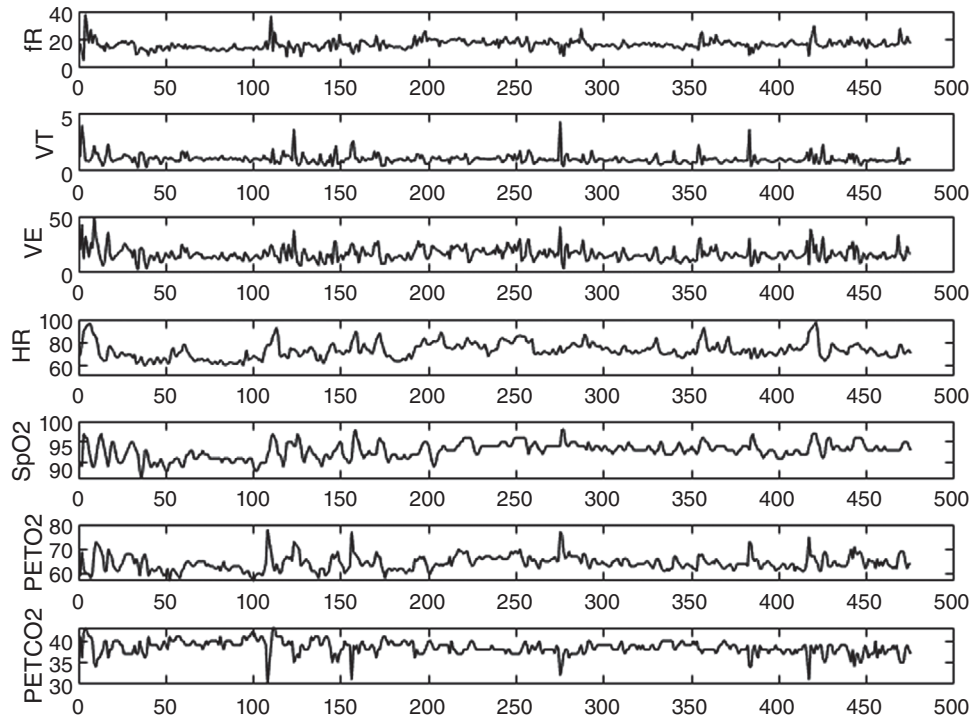
### 2.4 | Network visualization

The directed transfer entropy values that physiological time series (i.e.  $f_R$ ,  $V_T$ ,  $\dot{V}_E$ , HR,  $S_{pO_2}$ ,  $P_{ETO_2}$  and  $P_{ETCO_2}$ ) exerted on each other following exposure to an  $F_{IO_2}$  of 0.17, 0.145, 0.12 were compared against those at sea level ( $F_{IO_2}$ :  $\sim$ 0.2093–0.21). With the values obtained, any significant value in transfer entropy calculation was then compiled to form an adjacency matrix for each  $F_{IO_2}$ . If there was no statistically significant difference in transfer entropy in comparison of with  $F_{IO_2}$  0.21, a transfer entropy of zero was considered in the adjacency matrix. This matrix was used to plot a directed graph. The codes for calculation of transfer entropy and plotting the network were written in MATLAB.

## 3 | RESULTS

Eleven participants completed the study (45 min conditions  $\times$  4 sessions). One participant was removed from the chamber in  $F_{IO_2}$  0.12 ( $P_{ETO_2}$  fell below 45 mmHg). A sample representing 30 min recording of physiological signals during hypoxia is demonstrated in Figure 1.

Table 1 displays the changes in mean  $f_R$ ,  $V_T$ ,  $\dot{V}_E$ , HR,  $S_{pO_2}$ ,  $P_{ETO_2}$  and  $P_{ETCO_2}$  at the various  $F_{IO_2}$  values. While mean  $f_R$ ,  $V_T$ ,  $\dot{V}_E$  and HR did not



**FIGURE 1** A sample representing fluctuations of physiological signals during normobaric hypoxia (length of recording 30 min,  $F_{IO_2}$ : 0.145).  $f_R$ , respiratory frequency; HR, heart rate;  $P_{ETCO_2}$ , end-tidal pressure of  $CO_2$ ;  $P_{ETO_2}$ , end-tidal pressure of  $O_2$ ;  $S_{pO_2}$ , peripheral capillary oxygen saturation;  $\dot{V}_E$ , minute ventilation;  $V_T$ , tidal volume

**TABLE 1** Comparison of mean value of physiological parameters during graded normobaric hypoxia

	$F_{IO_2}$				P (ANOVA)
	0.21	0.17	0.145	0.12	
$f_R$ (breath $min^{-1}$ )	$16.68 \pm 2.73$	$17.24 \pm 2.64$	$17.63 \pm 3.67$	$17.08 \pm 5.01$	0.943
$V_T$ (l)	$0.88 \pm 0.28$	$0.82 \pm 0.20$	$0.88 \pm 0.16$	$0.97 \pm 0.31$	0.588
$\dot{V}_E$ (l)	$12.78 \pm 1.89$	$12.86 \pm 2.37$	$14.17 \pm 2.78$	$14.58 \pm 4.01$	0.355
HR (beat $min^{-1}$ )	$66.01 \pm 8.66$	$69.89 \pm 11.77$	$74.14 \pm 10.02$	$76.20 \pm 11.18$	0.120
$S_{pO_2}$ (%)	$99.51 \pm 0.55^c$	$98.22 \pm 1.00^c$	$93.94 \pm 1.85^a$	$86.22 \pm 2.80^{a,c}$	<0.0001
$P_{ETO_2}$ (mmHg)	$106.87 \pm 1.78^b$	$77.31 \pm 3.37^a$	$61.61 \pm 5.31^{a,b}$	$49.53 \pm 3.07^{a,b,c}$	<0.0001
$P_{ETCO_2}$ (mmHg)	$37.24 \pm 1.69$	$37.00 \pm 1.70$	$36.39 \pm 2.41$	$34.22 \pm 3.34^{a,b}$	0.0198

Data are presented as means  $\pm$  SD ( $n = 11$ ). Post hoc analysis: <sup>a</sup> $P < 0.05$  in comparison with  $F_{IO_2} = 0.21$ , <sup>b</sup> $P < 0.05$  in comparison with  $F_{IO_2} = 0.17$ , <sup>c</sup> $P < 0.05$  in comparison with  $F_{IO_2} = 0.145$ .  $f_R$ , respiratory frequency; HR, heart rate;  $P_{ETCO_2}$ , end-tidal pressure of  $CO_2$ ;  $P_{ETO_2}$ , end-tidal pressure of  $O_2$ ;  $S_{pO_2}$ , peripheral capillary oxygen saturation;  $\dot{V}_E$ , minute ventilation;  $V_T$ , tidal volume.

change during the hypoxic challenge, there were significant changes in mean  $S_{pO_2}$ ,  $P_{ETO_2}$  and  $P_{ETCO_2}$  during normobaric hypoxia.

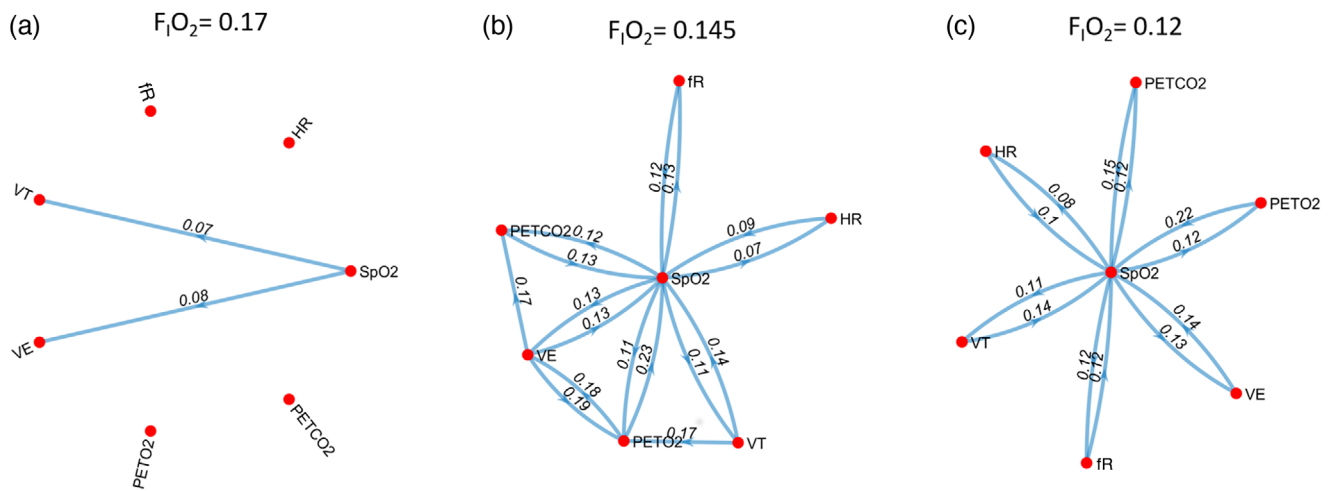
Sample entropy of the physiological time series are detailed in Table 2.  $S_{pO_2}$  sample entropy, calculated from  $S_{pO_2}$  signals using an ear clip oximeter with a resolution of one sample per respiratory cycle, increased as the concentration of inspired oxygen decreased ( $P < 0.0001$ ). This finding is in agreement with our previous report where  $S_{pO_2}$  was recorded using a finger pulse oximeter with a sampling rate of 1 Hz (Costello et al., 2020). None of the other measured physiological time series exhibited any alteration in their sample entropy following the hypoxic challenge.

Graphical presentation of directed transfer entropy between different physiological parameters is shown in Figure 2. These networks were plotted based on the adjacency matrices of transfer entropy at different  $F_{IO_2}$  values in comparison with normoxia (Tables 3 and 4). At an inspired oxygen concentration of 0.17, there was a significant increase in transfer entropy for  $S_{pO_2} \rightarrow \dot{V}_E$  and  $S_{pO_2} \rightarrow V_T$  in comparison with transfer entropy in  $F_{IO_2}$  0.21 (Figure 2a). At lower  $F_{IO_2}$  exposures (i.e. 0.145 and 0.12) transfer entropy between  $S_{pO_2}$  and other physiological time series increased markedly in comparison to transfer entropy in  $F_{IO_2}$  0.21 (Figures 2b,c). The highest information flow was detected for  $P_{ETO_2} \rightarrow S_{pO_2}$ , which were 0.23 and 0.22 bits

**TABLE 2** Comparison of sample entropy of physiological parameters during graded normobaric hypoxia

	$F_{IO_2}$				P (ANOVA)
	0.21	0.17	0.145	0.12	
$f_R$ entropy	$1.62 \pm 0.19$	$1.64 \pm 0.16$	$1.71 \pm 0.19$	$1.77 \pm 0.22$	0.234
$V_T$ entropy	$1.12 \pm 0.37$	$1.24 \pm 0.31$	$1.32 \pm 0.28$	$1.48 \pm 0.38$	0.095
$\dot{V}_E$ entropy	$1.57 \pm 0.27$	$1.65 \pm 0.18$	$1.74 \pm 0.21$	$1.72 \pm 0.33$	0.394
HR entropy	$1.21 \pm 0.30$	$1.10 \pm 0.30$	$1.06 \pm 0.32$	$1.16 \pm 0.27$	0.652
$S_{pO_2}$ entropy	$0.09 \pm 0.17^b$	$0.42 \pm 0.27^b$	$0.98 \pm 0.28^a$	$1.33 \pm 0.47^a$	<0.0001
$P_{ETO_2}$ entropy	$1.48 \pm 0.43$	$1.58 \pm 0.41$	$1.55 \pm 0.45$	$1.57 \pm 0.40$	0.946
$P_{ETCO_2}$ entropy	$1.24 \pm 0.41$	$1.24 \pm 0.39$	$1.21 \pm 0.35$	$1.43 \pm 0.35$	0.498

Data are presented as means  $\pm$  SD ( $n = 11$ ). Post hoc analysis: <sup>a</sup> $P < 0.05$  in comparison with  $F_{IO_2} = 0.21$ , <sup>b</sup> $P < 0.05$  in comparison with  $F_{IO_2} = 0.145$ .  $f_R$ , respiratory frequency; HR, heart rate;  $P_{ETCO_2}$ , end-tidal pressure of  $CO_2$ ;  $P_{ETO_2}$ , end-tidal pressure of  $O_2$ ;  $S_{pO_2}$ , peripheral capillary oxygen saturation;  $\dot{V}_E$ , minute ventilation;  $V_T$ , tidal volume.



**FIGURE 2** Graphical presentation of directed transfer entropy between different physiological parameters as the concentration of inspired oxygen decreases ( $n = 11$ ). (a)  $F_{IO_2} = 0.17$ , (b)  $F_{IO_2} = 0.145$ , and (c)  $F_{IO_2} = 0.12$ . Each node represents a physiological time series. Network edges (links) represent the link between two variables if there is a statistically significant difference in transfer entropy in comparison with  $F_{IO_2} = 0.21$ . The number on each edge represents transfer entropy (bits).  $f_R$ , respiratory frequency; HR, heart rate;  $P_{ETCO_2}$ , end-tidal pressure of  $CO_2$ ;  $P_{ETO_2}$ , end-tidal pressure of  $O_2$ ;  $S_{pO_2}$ , peripheral capillary oxygen saturation;  $\dot{V}_E$ , minute ventilation;  $V_T$ , tidal volume

**TABLE 3** Transfer entropy between physiological variables (horizontal  $\rightarrow$  vertical) at  $F_{IO_2} = 0.21$ 

	$S_{pO_2}$	HR	$f_R$	$V_T$	$\dot{V}_E$	$P_{ETO_2}$	$P_{ETCO_2}$
$S_{pO_2}$		$0.029 \pm 0.009$	$0.024 \pm 0.005$	$0.022 \pm 0.009$	$0.024 \pm 0.006$	$0.052 \pm 0.018$	$0.037 \pm 0.028$
HR	$0.025 \pm 0.021$		$0.103 \pm 0.030$	$0.084 \pm 0.031$	$0.092 \pm 0.027$	$0.081 \pm 0.022$	$0.075 \pm 0.020$
$f_R$	$0.036 \pm 0.041$	$0.140 \pm 0.049$		$0.103 \pm 0.030$	$0.129 \pm 0.039$	$0.139 \pm 0.032$	$0.122 \pm 0.033$
$V_T$	$0.029 \pm 0.035$	$0.087 \pm 0.033$	$0.089 \pm 0.029$		$0.081 \pm 0.037$	$0.096 \pm 0.024$	$0.090 \pm 0.032$
$\dot{V}_E$	$0.028 \pm 0.026$	$0.128 \pm 0.040$	$0.143 \pm 0.046$	$0.083 \pm 0.047$		$0.128 \pm 0.039$	$0.114 \pm 0.029$
$P_{ETO_2}$	$0.021 \pm 0.026$	$0.105 \pm 0.026$	$0.103 \pm 0.022$	$0.102 \pm 0.027$	$0.123 \pm 0.040$		$0.060 \pm 0.013$
$P_{ETCO_2}$	$0.043 \pm 0.043$	$0.125 \pm 0.031$	$0.123 \pm 0.026$	$0.114 \pm 0.032$	$0.121 \pm 0.051$	$0.092 \pm 0.019$	

Data are shown as means  $\pm$  SD.  $f_R$ , respiratory frequency; HR, heart rate;  $P_{ETCO_2}$ , end-tidal pressure of  $CO_2$ ;  $P_{ETO_2}$ , end-tidal pressure of  $O_2$ ;  $S_{pO_2}$ , peripheral capillary oxygen saturation;  $\dot{V}_E$ , minute ventilation;  $V_T$ , tidal volume.

**TABLE 4** Adjacency matrices representing transfer entropy of physiological signals at different fraction of inspired oxygen ( $F_{IO_2}$ )

A. $F_{IO_2}=0.17$								
	$S_{pO_2}$	HR	$f_R$	$V_T$	$V_E$	$P_{ETO_2}$	$P_{ETCO_2}$	
$S_{pO_2}$	0	0	0	0.07	0.08	0	0	
HR	0	0	0	0	0	0	0	
$f_R$	0	0	0	0	0	0	0	
$V_T$	0	0	0	0	0	0	0	
$\dot{V}_E$	0	0	0	0	0	0	0	
$P_{ETO_2}$	0	0	0	0	0	0	0	
$P_{ETCO_2}$	0	0	0	0	0	0	0	
B. $F_{IO_2}=0.145$								
	$S_{pO_2}$	HR	$f_R$	$V_T$	$V_E$	$P_{ETO_2}$	$P_{ETCO_2}$	
$S_{pO_2}$	0	0.07	0.13	0.11	0.13	0.11	0.12	
HR	0.09	0	0	0	0	0	0	
$f_R$	0.12	0	0	0	0	0	0	
$V_T$	0.14	0	0	0	0	0.17	0	
$\dot{V}_E$	0.13	0	0	0	0	0.19	0.17	
$P_{ETO_2}$	0.23	0	0	0	0.18	0	0	
$P_{ETCO_2}$	0.13	0	0	0	0	0	0	
C. $F_{IO_2}=0.12$								
	$S_{pO_2}$	HR	$f_R$	$V_T$	$V_E$	$P_{ETO_2}$	$P_{ETCO_2}$	
$S_{pO_2}$	0	0.08	0.12	0.11	0.13	0.12	0.12	
HR	0.10	0	0	0	0	0	0	
$f_R$	0.12	0	0	0	0	0	0	
$V_T$	0.14	0	0	0	0	0	0	
$\dot{V}_E$	0.14	0	0	0	0	0	0	
$P_{ETO_2}$	0.22	0	0	0	0	0	0	
$P_{ETCO_2}$	0.15	0	0	0	0	0	0	

A:  $F_{IO_2} = 0.17$ ; B:  $F_{IO_2} = 0.145$ ; C:  $F_{IO_2} = 0.12$ . Zero value means that there is no statistically significant difference in transfer entropy in comparison with  $F_{IO_2} = 0.21$ .  $f_R$ , respiratory frequency; HR, heart rate;  $P_{ETCO_2}$ , end-tidal pressure of  $CO_2$ ;  $P_{ETO_2}$ , end-tidal pressure of  $O_2$ ;  $S_{pO_2}$ , peripheral capillary oxygen saturation;  $\dot{V}_E$ , minute ventilation;  $V_T$ , tidal volume.

in  $F_{IO_2}$  of 0.145 and 0.12 bits respectively (Table 4). Moreover, this enhanced connectivity displayed a bidirectional flow of information as shown in Figure 2. While, bidirectional interactions were observed between various cardio-respiratory parameters at an  $F_{IO_2}$  of 0.145,  $S_{pO_2}$  exhibited the highest connectivity in the network (Figure 2b). In  $F_{IO_2}$  0.12,  $S_{pO_2}$  remained the main *hub* of the network as shown in Figure 2c.

## 4 | DISCUSSION

The main finding of this study, in support of the hypothesis, was that  $S_{pO_2}$  fluctuations during graded normobaric hypoxia exposure carry information about cardio-respiratory control. Specifically, during lower  $F_{IO_2}$  exposures (0.145 and 0.12), transfer entropy between  $S_{pO_2}$  and other time series increased in comparison to normoxia. Moreover, this

enhanced connectivity showed bidirectional flow of information which supports the existence of multiple feedback loops within the autonomic control of the cardio-respiratory system. These findings imply that pattern analysis of  $S_{pO_2}$  fluctuations has the potential for assessing the integrity of an individual's cardio-respiratory system in response to physiological challenges (e.g. hypoxia).

Control of respiration requires transfer of information from central and peripheral chemoreceptors to ensure a rigorous balance between supply and use of oxygen. If oxygen availability is reduced, the respiratory centres in the brainstem respond to this flow of information by changing their firing pattern to alter breathing rate and volume (Jubran & Tobin, 2000). Such physiological responses require optimum transfer of information between the different components involved in the homeostatic control of tissue oxygenation (e.g. respiratory centres in the brainstem, autonomic and cardiovascular centres, cardiac pacemaker, vasculature, airways, respiratory muscles, etc.). Previous

reports have indicated that hypoxia leads to the development of subtle ventilatory oscillations which have not been thoroughly examined in the existing literature (Jubran & Tobin, 2000). Some investigators have suggested that the engagement of the respiratory control system in the response to environmental or pathological challenges can be quantified by studying the pattern of respiratory rhythm and volume (Jubran & Tobin, 2000; Satti et al., 2019; Shirazi et al., 2013; Tipton et al., 2017). The current findings have further extended our understanding of this process by demonstrating that there is a higher degree of information transfer between different components of the respiratory control system, despite the absence of a significant change, or increase, in average  $f_R$ ,  $V_T$ , or  $\dot{V}_E$ . Our findings also highlight that this bidirectional flow of information can be quantified by transfer entropy, a tool which shows merit in network visualization of the respiratory control during hypoxia.

A novel finding in the present study was the existence of a causal relationship between  $S_{pO_2}$  fluctuations and respiratory control. Although previous observational and experimental studies have shown that  $S_{pO_2}$  instability is associated with pathophysiological and environmental challenges, the interpretation of such observations had remained speculative (Costello et al., 2020; Dipietro, Caughey, Cusson, & Fox, 1994; Garde et al., 2016; Roe & Jones, 1993). In general, investigating the causal relationship between physiological signals has largely been limited to reductionistic approaches (i.e. *in vitro*, *ex vivo* studies) (Altimiras, 1999). However, novel analytical methods have provided reliable tools to assess causal inference in multivariate time series data. Barnett and colleagues showed that the transfer entropy between two time series is equivalent to the Granger causality and can be used for data-driven causal inference (Barnett et al., 2009). Thus, transfer entropy has potential for the assessment of the respiratory control system based on multivariable recording of physiological signals, which is often available in acute clinical settings (e.g. intensive care units). Alternative methods that measure flow of information between parallel time series (e.g. mutual information and cross-entropy), do not reveal bidirectional relationship between time series (Raoufy et al., 2016; Richman & Moorman, 2000). This makes transfer entropy a unique method to non-invasively study the feedback loops responsible for autonomic control of the cardio-respiratory system.

In the present study, we observed that during exposure to  $F_{IO_2}$  0.17,  $S_{pO_2}$  had a causal influence on  $V_T$  and  $\dot{V}_E$ , but not  $f_R$  (Figure 2a). This corroborates previous literature showing that the ventilatory response to normobaric hypoxia is influenced by  $V_T$  more than  $f_R$  (Tipton et al., 2017). However, at a lower  $F_{IO_2}$ , the flow of information between  $S_{pO_2}$  and other variables ( $f_R$ ,  $V_T$ ,  $\dot{V}_E$ ,  $P_{ETO_2}$ ,  $P_{ETCO_2}$ ) exhibits a bidirectional relationship. This may indicate tighter regulation as the physiological challenge or stimulus is increased. The presence of bidirectional relationships in the network suggests that  $S_{pO_2}$  is not only influenced by ventilatory parameters, but also has an impact on respiratory variables, possibly through feedback regulation. As expected, the strongest causal link was related to  $P_{ETO_2} \rightarrow S_{pO_2}$  (Figure 2b,c). This corroborates a recent observation on mechanically ventilated pigs, which demonstrated that variations in the arterial

partial oxygen pressure ( $P_{aO_2}$ ) is related to cyclic fluctuations of alveolar oxygen tension during respiratory cycles (Formenti et al., 2017). Thus, the information derived from physiological fluctuations in alveolar oxygen tension can be transmitted to the systemic arteries and hence be reflected in haemoglobin saturation and its fluctuations. We also observed a reciprocal association between HR and  $S_{pO_2}$  time series in  $F_{IO_2}$  0.145 and 0.12 (Figure 2). This relationship was weaker than that observed between  $S_{pO_2}$  and the respiratory variables, and is consistent with previous reports on the relationship between  $S_{pO_2}$  and HR variability at high altitude or during normobaric hypoxia (Krejčí, Botek, & McKune, 2018; Saito, Tanobe, Yamada, & Nishihara, 2005).

Understanding integrated physiological function is the focus of network physiology (Bartsch, Liu, Bashan, & Ivanov, 2015). Here using a network approach, we have demonstrated that the degree of connectivity in the cardio-respiratory network was markedly higher during normobaric hypoxia compared to normoxia. This finding supports what we already knew: that the functional connectivity of different physiological systems is crucial for the effective response to environmental (or pathological) challenges, and hence survival. Likewise, recent evidence suggests that patients are more likely to survive critical illnesses as long as the physiological systems remain part of a connected interactive network (Asada et al., 2016). According to these studies, despite being matched for the severity of their illnesses, non-surviving patients exhibit significantly less functional physiological system (network) connectivity in comparison with survivors (Asada et al., 2016). Although we have only studied the integrity of the cardio-respiratory network in healthy individuals, our observations have made us speculate that the functional connectivity between respiratory parameters might be disrupted in patients with illnesses where responses/adaptation to hypoxia plays an important role in their survival (e.g. chronic obstructive pulmonary disease acute respiratory distress syndrome, and possibly COVID-19). Thus, a network approach may help understand the pathophysiology of such complex illnesses beyond what has already been found using traditional reductionistic methods.

While reciprocal interactions were observed between different cardio-respiratory parameters during hypoxia,  $S_{pO_2}$  remained the main hub of the network (Figure 2). This may indicate that indices derived from  $S_{pO_2}$  variability analysis have potential for non-invasive field and clinical studies to measure the connectivity of the respiratory control system. For example, application of fractal analysis of  $S_{pO_2}$  signals has been suggested as an alternative in paediatric sleep apnoea (Vaquerizo-Villar et al., 2018). Future studies are therefore warranted to investigate the application of non-invasive  $S_{pO_2}$  fluctuation analysis in monitoring individuals exposed to terrestrial altitude or patients who are susceptible to respiratory failure (e.g. patients with COVID-19). Despite extensive literature describing the physiology of respiration in health and disease, our understanding is not complete (Bunn & Poyton, 1996; Tipton et al., 2017; West, 2004). Recent observations of individuals displaying symptoms of 'happy' or 'silent' hypoxia with COVID-19 have not been thoroughly explained (Couzin-Frankel, 2020; Wilkerson, Adler, Shah, & Brown, 2020). A

network physiology approach, using information transfer between cardio-respiratory variables, may help to decipher these observations in the future.

#### 4.1 | Study limitations and future perspectives

This study uses a convenient sample of healthy young males to test the feasibility of the proposed method. First, in order to generalize the findings, future research is required to expand these findings to females and older individuals. Second, all of the participants were healthy and did not have any comorbidities that would affect the dynamics of the cardio-respiratory network. Therefore, the application of  $S_{pO_2}$  fluctuation analysis to the general population may show different results. For example, we have previously shown that  $S_{pO_2}$  entropy is affected by ageing (Bhagal & Mani, 2017). Other underlying conditions (e.g. respiratory diseases) are likely to impact the network and require attention in future research.

Pulse oximeter technology has recently expanded beyond measurement of  $S_{pO_2}$  to other applications, including detection of pulsus paradoxus and fluid responsiveness based on variability analysis of the plethysmography waveform (Hess, 2016). However, the potential application of analysing the variability in the  $S_{pO_2}$  signal *per se* has only recently been appreciated (Costello et al., 2020; McGrath, Perreard, MacKenzie, & Blike, 2020). To the best of our knowledge, this was the first time that the transfer of information between  $S_{pO_2}$ ,  $f_R$ ,  $V_T$ ,  $\dot{V}_E$ ,  $P_{ETO_2}$ ,  $P_{ETCO_2}$  and HR time series during graded normobaric hypoxia has been demonstrated.

It appears that  $S_{pO_2}$  fluctuations during graded normobaric hypoxia exposure carries information about cardio-respiratory control. Implementations of the algorithms developed in the present study could be utilized as physiological signal predictors incorporated into smart devices and fitness equipment, making them suitable for monitoring changes in aerobic fitness and physical health beyond the infrequent monitoring of patients during clinical interventions and rehabilitation programmes. Future studies should also examine if  $S_{pO_2}$  variability analysis could be used to improve monitoring in intensive care settings (e.g. need for or step-down from mechanical ventilation) in a similar way that is described for respiratory rate variability analysis (Seely et al., 2014).

#### 4.2 | Conclusion

$S_{pO_2}$  fluctuations during graded hypoxia exposure carry information about cardio-respiratory control.  $S_{pO_2}$  entropy analysis has potential for non-invasive assessment of the engagement of the respiratory control system.

#### ACKNOWLEDGEMENTS

We would like to express our gratitude to all the participants involved, for their support and patience, in contributing their time to help with our study.

#### COMPETING INTERESTS

The authors declare that the research was conducted in the absence of any commercial or financial relationships that could be construed as a potential conflict of interest.

#### AUTHOR CONTRIBUTIONS

Conception or design of the work: J.T.C., M.J.T., J.C. and A.R.M.; acquisition, analysis, or interpretation of data for the work: Y.J., T.B.W., N.P., A.B. and A.R.M.; drafting of the work or revising it critically for important intellectual content: Y.J., J.T.C., T.B.W., N.P., A.B., M.J.T., J.C. and A.R.M. All authors have read and approved the final version of this manuscript and agree to be accountable for all aspects of the work in ensuring that questions related to the accuracy or integrity of any part of the work are appropriately investigated and resolved. All persons designated as authors qualify for authorship, and all those who qualify for authorship are listed.

#### DATA AVAILABILITY STATEMENT

The data that support the findings of this study are available from the corresponding author upon reasonable request.

#### ORCID

Joseph T. Costello  <https://orcid.org/0000-0001-9510-7932>

Thomas B. Williams  <https://orcid.org/0000-0002-3506-3111>

Michael J. Tipton  <https://orcid.org/0000-0002-7928-8451>

Ali R. Mani  <https://orcid.org/0000-0003-0830-2022>

#### REFERENCES

- Altimiras, J. (1999). Understanding autonomic sympathovagal balance from short-term heart rate variations. Are we analyzing noise? *Comparative Biochemistry and Physiology – Part A: Molecular & Integrative Physiology*, 124, 447–460.
- Asada, T., Aoki, Y., Sugiyama, T., Yamamoto, M., Ishii, T., Kitsuta, Y., & Doi, K. (2016). Organ system network disruption in nonsurvivors of critically ill patients. *Critical Care Medicine*, 44, 83–90.
- Barnett, L., Barrett, A. B., & Seth, A. K. (2009). Granger causality and transfer entropy are equivalent for Gaussian variables. *Physical Review Letters*, 103, 238701.
- Bartsch, R. P., Liu, K. K. L., Bashan, A., & Ivanov, P. C. (2015). Network physiology: How organ systems dynamically interact. *PLoS One*, 10, e0142143.
- Bashan, A., Bartsch, R. P., Kantelhardt, J. W., Havlin, S., & Ivanov, P. C. (2012). Network physiology reveals relations between network topology and physiological function. *Nature Communications*, 3, 702.
- Bhagal, A. S., & Mani, A. R. (2017). Pattern analysis of oxygen saturation variability in healthy individuals: Entropy of pulse oximetry signals carries information about mean oxygen saturation. *Frontiers in Physiology*, 8, 555.
- Buchman, T. G. (2002). The community of the self. *Nature*, 420, 246–251.
- Bunn, H. F., & Poyton, R. O. (1996). Oxygen sensing and molecular adaptation to hypoxia. *Physiological Reviews*, 76, 839–885.
- Costello, J. T., Bhagal, A. S., Williams, T. B., Bekoe, R., Sabir, A., Tipton, M. J., & Mani, A. R. (2020). Effects of normobaric hypoxia on oxygen saturation variability. *High Altitude Medicine & Biology*, 21, 76–83.
- Couzin-Frankel, J. (2020). The mystery of the pandemic's 'happy hypoxia'. *Science*, 368, 455–456.
- Dipietro, J. A., Caughy, M. O., Cusson, R., & Fox, N. A. (1994). Cardio-respiratory functioning of preterm infants: Stability and risk associations for measures of heart rate variability and oxygen saturation. *Developmental Psychobiology*, 27, 137–152.



- Faes, L., Marinazzo, D., Montalto, A., & Nollo, G. (2014). Lag-specific transfer entropy as a tool to assess cardiovascular and cardiorespiratory information transfer. *IEEE Transactions on Bio-Medical Engineering*, *61*, 2556–2568.
- Formenti, F., Bommakanti, N., Chen, R., Cronin, J. N., McPeak, H., Holopherne-Doran, D., & Farmery, A. D. (2017). Respiratory oscillations in alveolar oxygen tension measured in arterial blood. *Scientific Reports*, *7*, 7499.
- Garde, A., Zhou, G., Raihana, S., Dunsmuir, D., Karlen, W., Dekhordi, P., & Ansermino, J. M. (2016). Respiratory rate and pulse oximetry derived information as predictors of hospital admission in young children in Bangladesh: A prospective observational study. *BMJ Open*, *6*, e011094.
- Goldberger, A. L., Amaral, L. A., Glass, L., Hausdorff, J. M., Ivanov, P. C., Mark, R. G., & Stanley, H. E. (2000). PhysioBank, PhysioToolkit, and PhysioNet: Components of a new research resource for complex physiologic signals. *Circulation*, *101*, E215–E220.
- Hess, D. R. (2016). Pulse oximetry: Beyond SpO<sub>2</sub>. *Respiratory Care*, *61*, 1671–1680.
- Jubran, A., & Tobin, M. J. (2000). Effect of isocapnic hypoxia on variational activity of breathing. *American Journal of Respiratory and Critical Care Medicine*, *162*, 1202–1209.
- Kanter, I., Stramaglia, S., degli Studi di Bari, U., Wolfgang Kinzel, I., Ch Ivanov, P. L., Liu, K. K., & Mantegna, R. N. (2015). Plasticity of brain wave network interactions and evolution across physiologic states. *Frontiers in Neural Circuits*, *9*, 62.
- Krejčí, J., Botek, M., & McKune, A. J. (2018). Dynamics of the heart rate variability and oxygen saturation response to acute normobaric hypoxia within the first 10 min of exposure. *Clinical Physiology and Functional Imaging*, *38*, 56–62.
- Lee, J., Nemati, S., Silva, I., Edwards, B. A., Butler, J. P., & Malhotra, A. (2012). Transfer entropy estimation and directional coupling change detection in biomedical time series. *Biomedical Engineering Online*, *11*, 19.
- Marzbanrad, F., Kimura, Y., Palaniswami, M., & Khandoker, A. H. (2015). Quantifying the interactions between maternal and fetal heart rates by transfer entropy. *PLoS One*, *10*, e0145672.
- McGrath, S. P., Perreard, I. M., MacKenzie, T., & Blike, G. T. (2020). Patterns in continuous pulse oximetry data prior to pulseless electrical activity arrest in the general care setting. *Journal of Clinical Monitoring and Computing*, <https://doi.org/10.1007/s10877-020-00509-8>.
- Mitchell, M. (2009). *Complexity: A guided tour*. New York: Oxford University Press.
- Pincus, S. M. (1991). Approximate entropy as a measure of system complexity. *Proceedings of the National Academy of Sciences, USA*, *88*, 2297–2301.
- Pincus, S. M. (1994). Greater signal regularity may indicate increased system isolation. *Mathematical Biosciences*, *122*, 161–181.
- Raoufy, M. R., Ghafari, T., Darooei, R., Nazari, M., Mahdavi, S. A., Eslaminejad, A. R., & Hajizadeh, S. (2016). Classification of asthma based on nonlinear analysis of breathing pattern. *PLoS One*, *11*, e0147976.
- Richman, J. S., & Moorman, J. R. (2000). Physiological time-series analysis using approximate entropy and sample entropy. *American Journal of Physiology. Heart and Circulatory Physiology*, *278*, H2039–H2049.
- Roe, P. G., & Jones, J. G. (1993). Causes of oxyhaemoglobin saturation instability in the postoperative period. *British Journal of Anaesthesia*, *71*, 481–487.
- Saito, S., Tanobe, K., Yamada, M., & Nishihara, F. (2005). Relationship between arterial oxygen saturation and heart rate variability at high altitudes. *American Journal of Emergency Medicine*, *23*, 8–12.
- Satti, R., Abid, N.-U.-H., Bottaro, M., De Rui, M., Garrido, M., Raoufy, M. R., & Mani, A. R. (2019). The Application of the extended Poincaré plot in the analysis of physiological variabilities. *Frontiers in Physiology*, *10*, 116.
- Schreiber, T. (2000). Measuring information transfer. *Physical Review Letters*, *85*, 461–464.
- Seely, A. J. E., Bravi, A., Herry, C., Green, G., Longtin, A., Ramsay, T., & Marshall, J. (2014). Do heart and respiratory rate variability improve prediction of extubation outcomes in critically ill patients? *Critical Care*, *18*, R65.
- Shirazi, A. H., Raoufy, M. R., Ebadi, H., De Rui, M., Schiff, S., Mazloom, R., & Mani, A. R. (2013). Quantifying memory in complex physiological time-series. *PLoS One*, *8*, e72854.
- Tipton, M. J., Harper, A., Paton, J. F. R., & Costello, J. T. (2017). The human ventilatory response to stress: Rate or depth? *Journal of Physiology*, *595*, 5729–5752.
- Vaquerizo-Villar, F., Álvarez, D., Kheirandish-Gozal, L., Gutiérrez-Tobal, G. C., Barroso-García, V., Crespo, A., & Hornero, R. (2018). Detrended fluctuation analysis of the oximetry signal to assist in paediatric sleep apnoea-hypopnoea syndrome diagnosis. *Physiological Measurement*, *39*, 114006.
- West, J. B. (2004). The physiologic basis of high-altitude diseases. *Annals of Internal Medicine*, *141*, 789–800.
- Wibral, M., Vicente, R., & Lindner, M. (2014). Transfer entropy in neuroscience. In: M. Wibral, R. Vicente & J. Lizier (Ed.), *Directed information measures in neuroscience* (pp. 3–36). Berlin, Heidelberg: Springer.
- Wilkerson, R. G., Adler, J. D., Shah, N. G., & Brown, R. (2020). Silent hypoxia: A harbinger of clinical deterioration in patients with COVID-19. *American Journal of Emergency Medicine*, <https://doi.org/10.1016/j.ajem.2020.05.044>.
- Williams, T. B., Corbett, J., McMorris, T., Young, J. S., Dicks, M., Ando, S., ... Costello, J. T. (2019). Cognitive performance is associated with cerebral oxygenation and peripheral oxygen saturation, but not plasma catecholamines, during graded normobaric hypoxia. *Experimental Physiology*, *104*, 1384–1397.

**How to cite this article:** Jiang Y, Costello JT, Williams TB, et al. A network physiology approach to oxygen saturation variability during normobaric hypoxia. *Experimental Physiology*. 2020;1–9. <https://doi.org/10.1113/EP088755>