

SUPPLEMENTARY FIGURES:

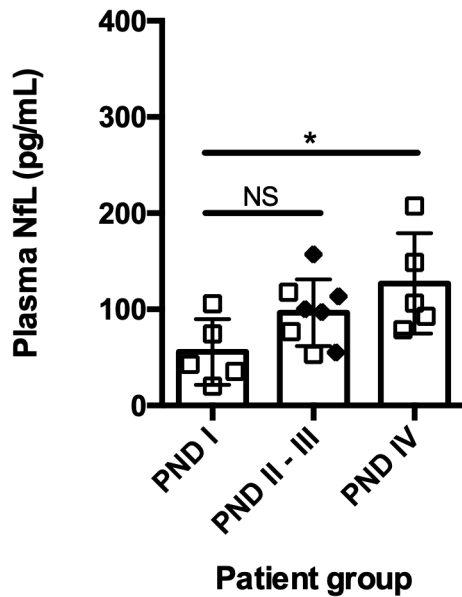


Figure e-1. Neurofilament Light Chain (NfL) plasma levels are elevated in symptomatic ATTR-V30M patients from cohort #2. NfL levels exhibited a significant linear trend with disease progression assessed with PND score: $F_{2,15} = 5.2$ ($p < 0.05$). PNfL levels were significantly increased between early symptomatic patients (PND I) compared with more severely affected patients (PND IV). Bonferroni's post hoc test for multiple comparisons were used to compare all ATTR-V30M patient groups. In PND II-III full diamond are patients with a PND score of III. All data are represented as group means \pm SD. * $P < 0.05$.

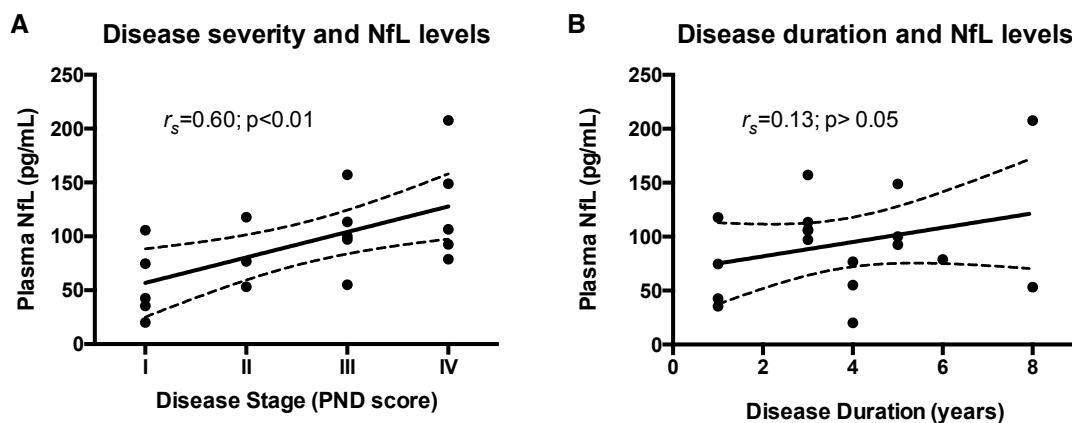


Figure e-2. PNfL and disease severity ATTR-V30M patients from cohort #2. (A) Disease severity as assessed by the PND score (I-IV) correlated positively and significantly with pNfL levels. (B) Disease duration and pNfL did not show a significant positive correlation. r_s = Spearman correlation coefficient; Dashed lines represent the 95% CI.

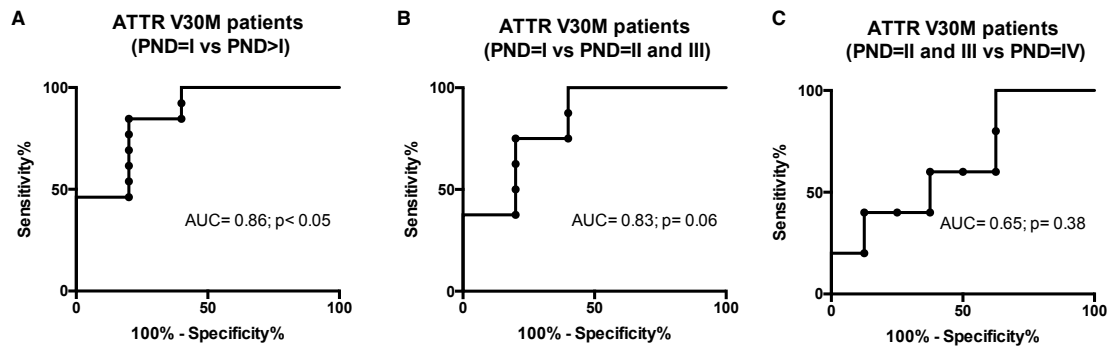


Figure e-3. Receiver operating characteristics (ROCs) of NfL levels for ATTR-V30M patients from cohort #2 illustrating the sensitivity and the specificity pNfL in differentiating patients at different disease stages. (A) PND I versus PND II, III and IV. (B) PND I versus PND II and III. (C) PND II and III versus PND IV. AUC = area under the curve.