

Graph-Based Object Classification for Neuromorphic Vision Sensing

Yin Bi, Aaron Chadha, Alhabib Abbas, Eirina Bourtsoulatze and Yiannis Andreopoulos
Department of Electronic & Electrical Engineering
University College London, London, U.K.

{yin.bi.16, aaron.chadha.14, alhabib.abbas.13, e.bourtsoulatze, i.andreopoulos}@ucl.ac.uk

Abstract

Neuromorphic vision sensing (NVS) devices represent visual information as sequences of asynchronous discrete events (a.k.a., “spikes”) in response to changes in scene reflectance. Unlike conventional active pixel sensing (APS), NVS allows for significantly higher event sampling rates at substantially increased energy efficiency and robustness to illumination changes. However, object classification with NVS streams cannot leverage on state-of-the-art convolutional neural networks (CNNs), since NVS does not produce frame representations. To circumvent this mismatch between sensing and processing with CNNs, we propose a compact graph representation for NVS. We couple this with novel residual graph CNN architectures and show that, when trained on spatio-temporal NVS data for object classification, such residual graph CNNs preserve the spatial and temporal coherence of spike events, while requiring less computation and memory. Finally, to address the absence of large real-world NVS datasets for complex recognition tasks, we present and make available a 100k dataset of NVS recordings of the American sign language letters, acquired with an iniLabs DAVIS240c device under real-world conditions.

1. Introduction

Object classification finds numerous applications in visual surveillance, human-machine interfaces, image retrieval and visual content analysis systems. Following the prevalence and advances of CMOS active pixel sensing (APS), deep convolutional neural networks (CNNs) have already achieved good performance in APS-based object classification problems [28, 24]. However, APS-based sensing is known to be cumbersome for machine learning systems because of limited frame rate, high redundancy between frames, blurriness due to slow shutter adjustment under varying illumination, and high power requirements [18]. Inspired by the photoreceptor-bipolar-ganglion cell information flow in low-level mammalian vision, researchers

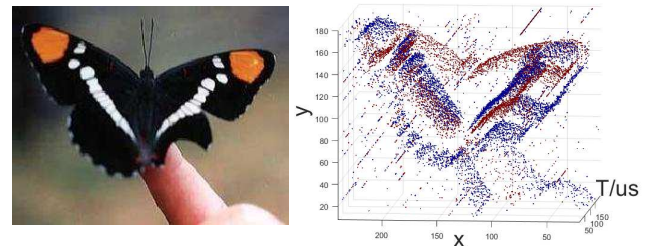


Figure 1: Examples of objects captured by APS and neuromorphic vision sensors. Left: Conventional APS image. Right: Events stream from NVS sensor (Red:ON, Blue:OFF).

have devised cameras based on neuromorphic vision sensing (NVS) [18, 51, 42]. NVS hardware outputs a stream of asynchronous ON/OFF address events (a.k.a., “spikes”) that indicate the changes in scene reflectance. An example is shown in Fig 1, where the NVS-based spike events correspond to a stream of coordinates and timestamps of reflectance events triggering ON or OFF in an asynchronous manner. This new principle significantly reduces the memory usage, power consumption and redundant information across time, while offering low latency and very high dynamic range.

However, it has been recognized that current NVS-based object classification systems are inferior to APS-based counterparts because of the limited amount of work on NVS object classification and the lack of NVS data with reliable annotations to train and test with [18, 42, 60]. In this work, we improve on these two issues by firstly proposing graph-based object classification method for NVS data. Previous approaches have either artificially grouped events into frame forms [65, 16, 13, 12] or derived complex feature descriptors [57, 15, 29], which do not always provide for good representations for complex tasks like object classification. Such approaches dilute the advantages of compactness and asynchronicity of NVS streams, and may be sensitive to the noise and change of camera motion or viewpoint orientation. To the best of our knowledge, this is the

first attempt to represent neuromorphic spike events as a graph, which allows us to use residual graph CNNs for end-to-end task training and reduces the computation of the proposed graph convolutional architecture to one-fifth of that of ResNet50 [24], while outperforming or matching the results of the state-of-the-art.

With respect to benchmarks, most neuromorphic datasets for object classification available to date are generated from emulators [40, 6, 23], or recorded from APS datasets via recordings of playback in standard monitors [53, 33, 25]. However, datasets acquired in this way cannot capture scene reflectance changes as recorded by NVS devices in real-world conditions. Therefore, creating real-world NVS datasets is important for the advancement of NVS-based computer vision. To this end, we create and make available a dataset of NVS recordings of 24 letters (A-Y, excluding J) from the American sign language. Our dataset provides more than 100K samples, and to our best knowledge, this is the largest labeled NVS dataset acquired under realistic conditions.

We summarize our contributions as follows:

1. We propose a graph-based representation for neuromorphic spike events, allowing for fast end-to-end task training and inference.
2. We introduce *residual graph CNNs* (RG-CNNs) for NVS-based object classification. Our results show that they require less computation and memory in comparison to conventional CNNs, while achieving superior results to the state-of-the-art in various datasets.
3. We source one of the largest and most challenging neuromorphic vision datasets, acquired under real-world conditions, and make it available to the research community.

In Section 2 we review related work. Section 3 details our method for NVS-based object classification and is followed by the description of our proposed dataset in Section 4. Experimental evaluation is presented in Section 5 and Section 6 concludes the paper.

2. Related Work

We first review previous work on NVS-based object classification, followed by a review of recent developments in graph convolutional neural networks.

2.1. Neuromorphic Object Classification

Feature descriptors for object classification have been widely used by the neuromorphic vision community. Some of the most common descriptors are corner detectors and line/edge extraction [14, 61, 39, 40]. While these efforts

were promising early attempts for NVS-based object classification, their performance does not scale well when considering complex datasets. Inspired by their frame-based counterparts, optical flow methods have been proposed as feature descriptors for NVS [15, 5, 3, 4, 10, 45]. For a high-accuracy optical flow, these methods have very high computational requirements, which diminishes their usability in real-time applications. In addition, due to the inherent discontinuity and irregular sampling of NVS data, deriving compact optical flow representations with enough descriptive power for accurate classification and tracking still remains a challenge [15, 5, 10, 45]. Lagorce proposed event-based spatio-temporal features called time-surfaces [29]. This is a time oriented approach to extract spatio-temporal features that are dependent on the direction and speed of motion of the objects. Inspired by time-surfaces, Sironi proposed a higher-order representation for local memory time surfaces that emphasizes the importance of using the information carried by past events to obtain a robust representation [57]. A drawback of these methods is their sensitivity to noise and their strong dependencies on the type of motion of the objects in each scene.

Another avenue for NVS-based object classification is via frame-based methods, i.e., converting the neuromorphic events to into synchronous frames of spike events, on which conventional computer vision techniques can be applied. Zhu [65] introduced a four-channel image form with the same resolution as the neuromorphic vision sensor: the first two channels encode the number of positive and negative events that have occurred at each pixel, while last two channels as the timestamp of the most recent positive and negative event. Inspired by the functioning of Spiking Neural Networks (SNNs) to maintain memory of past events, leaky frame integration has been used in recent work [16, 13, 12], where the corresponding position of the frame is incremented by a fixed amount when an event occurs at that event address. Peng [48] proposed bag-of-events (BOE) feature descriptors, which is a statistical learning method that firstly divides the event streams into multiple segments and then relies on joint probability distribution of the consecutive events to represent feature maps. However, these methods do not offer the compact and asynchronous nature of NVS, as the frame sizes that need to be processed are substantially larger than those of the original NVS streams.

The final type of neuromorphic object classification is event-based methods. The most commonly used architecture is based on spiking neural networks (SNNs) [1, 19, 7, 30, 41]. While SNNs are theoretically capable of learning complex representations, they have still not achieved the performance of gradient-based methods because of lack of suitable training algorithms. Essentially, since the activation functions of spiking neurons are not differentiable, SNNs are not able to leverage on popular training methods

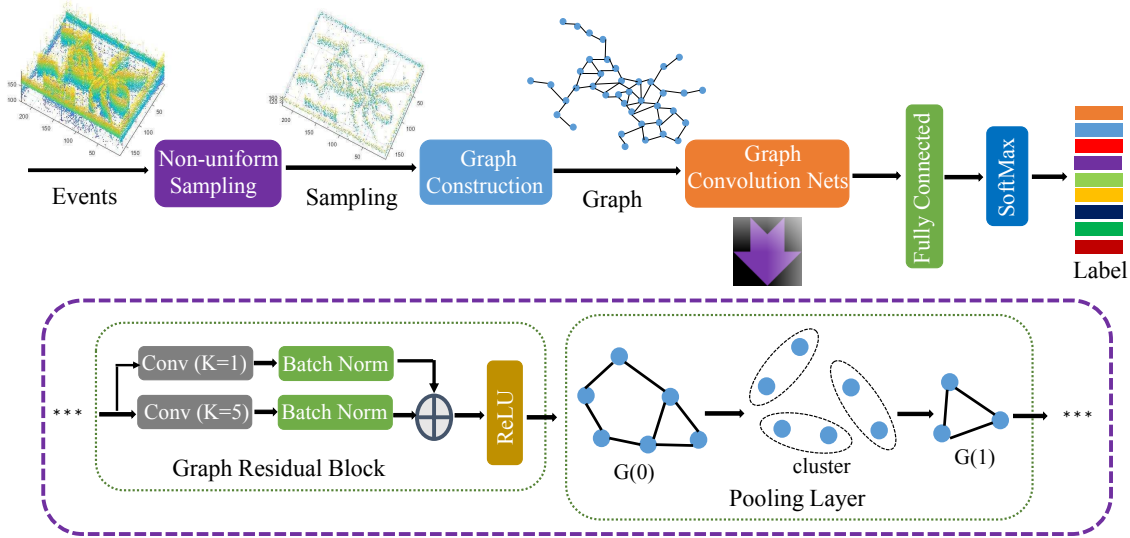


Figure 2: Framework of graph-based object classification for neuromorphic vision sensing.

such as backpropagation. To address this, researchers currently follow an intermediate step [44, 20, 49, 58]: a neural network is trained off-line using continuous/rate-based neuronal models with state-of-the-art supervised training algorithms and then the trained architecture is mapped to an SNN. However, until now, despite their substantial implementation advantages at inference, the obtained solutions are complex to train and have typically achieved lower performance than gradient-based CNNs. Therefore, the proposed graph-based CNN approach for NVS can be seen as a way to bridge the compact, spike-based, asynchronous nature of NVS with the power of well-established learning methods for graph neural networks.

2.2. Graph CNNs

Generalizing neural networks to data with graph structures is an emerging topic in deep learning research. The principle of constructing CNNs on graph generally follows two streams: the spectral perspective [27, 32, 17, 62, 11, 52, 54] and the spatial perspective [21, 2, 8, 22, 36, 38]. Spectral convolution applies spectral filters on the spectral components of signals on vertices transformed by a graph Fourier transform, followed by spectral convolution. Deferrard [17] provided efficient filtering algorithms by approximating spectral filters with Chebyshev polynomials that only aggregate local K -neighborhoods. This approach was further simplified by Kipf [27], who consider only the one-neighborhood for single-filter operation. Levie [32] proposed a filter based on the Cayley transform as an alternative for the Chebyshev approximation. As to spatial convolution, convolution filters are applied directly on the graph nodes and their neighbors. Several research groups have independently dealt with this problem. Duvenaud [21]

proposed to share the same weights among all edges by summing the signal over neighboring vertices followed by a weight matrix multiplication, while Atwood [2] proposed to share weights based on the number of hops between two vertices. Finally, recent work [38, 22] makes use of the pseudo-coordinates of nodes as input to determine how the features are aggregated during locally aggregating feature values in a local patch. Spectral convolution operations require an identical graph as input, as well as complex numerical computations because they handle the whole graph simultaneously. Therefore, to remain computationally efficient, our work follows the spirit of spatial graph convolution approaches and extends them to NVS data for object classification.

3. Methodology

Our goal is to represent the stream of spike events from neuromorphic vision sensors as a graph and perform convolution on the graph for object classification. Our model is visualized in Fig. 2: a non-uniform sampling strategy is firstly used to obtain a small set of neuromorphic events for computationally and memory-efficient processing; then sampling events are constructed into a radius neighborhood graph, which is processed by our proposed residual-graph CNNs for object classification. The details will be described in the following section.

3.1. Non-uniform Sampling & Graph Construction

Given a NVS sensor with spatial address resolution of $H \times W$, we express a volume of events produced by an NVS camera as a tuple sequence:

$$\{e_i\}_N = \{x_i, y_i, t_i, p_i\}_N \quad (1)$$

where $(x_i, y_i) \in \mathbb{R}^{H \times W}$ indicates the spatial address at which the spike event occurred, t_i is the timestamp indicating when the event was generated, $p_i \in \{+1, -1\}$ is the event polarity (with +1, -1 signifying ON and OFF events respectively), and N is the total number of the events. To reduce the storage and computational cost, we use non-uniform grid sampling [31] to sample a subset of M representative events $\{e_i\}_M$ from $\{e_i\}_N$, where $M \ll N$. Effectively, one event is randomly selected from a space-time volume with the maximum number of events inside. If we consider $\mathbf{s}\{e_i\}_{i=1}^k$ to be such a grid containing k events, then only one event e_i ($i \in [1, k]$) is randomly sampled in this space-time volume. We then define the sampling events $\{e_i\}_{\{m\}}$ on a directed graph $G = \{\nu, \varepsilon, U\}$, with ν being the set of vertices, ε the set of the edges, and U containing pseudo-coordinates that locally define the spatial relations between connected nodes. The sampling events are independent and not linked, therefore, we regard each event $e_i : (x_i, y_i, t_i, p_i)$ as a node in the graph, such that $\nu_i : (x_i, y_i, t_i)$, with $\nu_i \in \nu$. We define the connectivity of nodes in the graph based on the radius-neighborhood-graph strategy. Namely, neighboring nodes ν_i and ν_j are connected with an edge only if their weighted Euclidean distance $d_{i,j}$ is less than radius distance R . For two spike events e_i and e_j , the Euclidean distance between them is defined as the weighted spatio-temporal distance:

$$d_{i,j} = \sqrt{\alpha(|x_i - x_j|^2 + |y_i - y_j|^2) + \beta|t_i - t_j|^2} \leq R \quad (2)$$

where α and β are weight parameters compensating for the difference in spatial and temporal grid resolution (timing accuracy is significantly higher in NVS cameras than spatial grid resolution). To limit the size of the graph, we constrain the maximum connectivity degree for each node by parameter D_{\max} .

We subsequently define $u(i, j)$ for node i , with connected node j , as $u(i, j) = [|x_i - x_j|, |y_i - y_j|] \in U$. After connecting all nodes of the graph $G = \{\nu, \varepsilon, U\}$ via the above process, we consider the polarity of events as a signal that resides on the nodes of the graph G . In other words, we define the input feature for each node i , as $f^{(0)}(i) = p_i \in \{+1, -1\}$.

3.2. Graph Convolution

Graph convolution generalizes the traditional convolutional operator to the graph domain. Similar to frame-based convolution, graph convolution has two types [9]: spectral and spatial. Spectral convolution [17, 62, 11, 52, 54] defines the convolution operator by decomposing a graph in the spectral domain and then applying a spectral filter on the spectral components. However, this operation requires identical graph input and handles the whole graph simultaneously, so it is not suitable for the variable and large graphs

constructed from NVS. Spatial convolution [8, 22, 36, 38] aggregates a new feature vector for each vertex using its neighborhood information weighted by a trainable kernel function. Because of this property, we consider spatial convolution operation as a better choice when dealing with graphs from NVS.

Similar to conventional frame-based convolution, spatial convolution operations on graphs are also an one-to-one mapping between kernel function and neighbors at relative positions w.r.t. the central node of the convolution. Let i denote a node of the graph with feature $f(i)$, $\mathfrak{N}(i)$ denote the set of neighbors of node i and $g(u(i, j))$ denote the weight parameter constructed from the kernel function $g(\cdot)$. The graph convolution operator \otimes for this node can then be written in the following general form

$$(f \otimes g)(i) = \frac{1}{|\mathfrak{N}(i)|} \sum_{j \in \mathfrak{N}(i)} f(j) \cdot g(u(i, j)) \quad (3)$$

where $|\mathfrak{N}(i)|$ is the cardinality of $\mathfrak{N}(i)$. We can generalize (3) to multiple input features per node. Given the kernel function $\mathbf{g} = (g_1, \dots, g_l, \dots, g_{M_{in}})$ and input node feature vector \mathbf{f}_l , with M_{in} feature maps indexed by l , the spatial convolution operation \otimes for the node i with M_{in} feature maps is defined as:

$$(\mathbf{f} \otimes \mathbf{g})(i) = \frac{1}{|\mathfrak{N}(i)|} \sum_{l=1}^{M_{in}} \sum_{j \in \mathfrak{N}(i)} f_l(j) \cdot g_l(u(i, j)) \quad (4)$$

The kernel function \mathbf{g} defines how to model the coordinates U . The content of U is used to determine how the features are aggregated and the content of $f_l(j)$ defines what is aggregated. Therefore, several spatial convolution operations [8, 22, 36, 38] on graphs were proposed by using different choice of kernel functions \mathbf{g} . Among them, SplineCNN [22] achieves state-of-the-art results in several applications, so in our work we use the same kernel function as in SplineCNN. In this way, we leverage properties of B-spline bases to efficiently filter NVS graph inputs of arbitrary dimensionality. Let $((N_{1,i}^m)_{1 \leq i \leq k_1}, \dots, (N_{d,i}^m)_{1 \leq i \leq k_d})$ denote d open B-spline bases of degree m with $\mathbf{k} = (k_1, \dots, k_d)$ defining d -dimensional kernel size [50]. Let $w_{p,l} \in \mathbf{W}$ denote a trainable parameter for each element p from the Cartesian product $\mathfrak{P} = (N_{1,i}^m)_i \times \dots \times (N_{d,i}^m)_i$ of the B-spline bases and each of the M_{in} input feature maps indexed by l . Then the kernel function $g_l : [a_1, b_1] \times \dots \times [a_d, b_d] \rightarrow \mathfrak{R}$ is defined as:

$$g_l(\mathbf{u}) = \sum_{p \in \mathfrak{P}} w_{p,l} \cdot \prod_{i=1}^d N_{i,p_i}(u_i) \quad (5)$$

We denote a graph convolution layer as $\text{Conv}(M_{in}, M_{out})$, where M_{in} is the number of input feature maps and M_{out} is

the number of output feature maps indexed by l' . Then, a graph convolution layer with bias b_l , activated by activation function $\xi(t)$, can be written as:

$$\text{Conv}_{l'} = \xi\left(\frac{1}{|\mathfrak{N}(i)|} \sum_{l=1}^{M_{\text{in}}} \sum_{j \in \mathfrak{N}(i)} f_l(j) \cdot \sum_{p \in P} w_{p,l}\right) \cdot \prod_{i=1}^d N_{i,p_i}(u_i) + b_{l'} \quad (6)$$

where $l' = 1, \dots, M_{\text{out}}$, indicates the l' th output feature map. Given a series of C graph convolutional layers $(\text{Conv}^{(c)})_{c \in [0, C]}$, the c -th layer has corresponding input feature map $\mathbf{f}^{(c)}$ over all nodes, with the input feature for node i of the first layer $\text{Conv}^{(0)}$, $f^{(0)}(i) = p_i \in \{+1, -1\}$.

Finally, to accelerate deep network training, we use batch normalization [26] before the activation function in each graph convolutional layer. That is, the whole node feature $f_{l'}$ over l' channel map is normalized individually via:

$$f'_{l'} = \frac{f_l - E(f_{l'})}{\sqrt{\text{Var}(f_{l'}) + \epsilon}} \cdot \gamma + \beta \quad (7)$$

where $l' = 1, \dots, M_{\text{out}}$, $E(f_{l'})$ and $\text{Var}(f_{l'})$ denote mean and variance of $f_{l'}$ respectively, ϵ is used to ensure normalization does not overflow when the variance is near zero, and γ and β represent trainable parameters.

3.3. Pooling Layer

The utility of a pooling layer is to compact feature representations, in order to preserve important information while discarding irrelevant details [64]. In conventional APS-oriented CNNs, because of the uniform sampling grid (e.g., regular pixel array in images), pooling layers can be easily implemented by performing a max, average, or sum operation over neighbouring features. Similar to recent work in graph pooling [55], we apply pooling in order to obtain a coarser NVS graph. As shown in the pooling layer of the Fig. 2, we first derive fixed-size clusters for graphs based on the node coordinates, then aggregate all nodes within one cluster, followed by the computation of new coordinates and features for the new nodes.

Given a graph representation, let us denote the spatial coordinates for node i as $(x'_i, y'_i) \in \mathbb{R}^{H' \times W'}$ and resolution as $H' \times W'$. We define the cluster size as $s_h \times s_w$, which corresponds to the downscaling factor in the pooling layer, leading to $\left\lceil \frac{H'}{s_h} \right\rceil \times \left\lceil \frac{W'}{s_w} \right\rceil$ clusters. Given there are num nodes in one cluster, only one new node is generated on each cluster. For this new node, the coordinates are the average of coordinates of these num nodes, and the feature is the average or maximum of feature of these num nodes, according to whether a max pooling (MaxP) or average pooling (AvgP) strategy is used. Importantly, if there are connected nodes

between two clusters, we assume the new generated nodes in these two clusters are connected with an edge.

3.4. Fully Connected Layer

Given M_{in} feature maps $\mathbf{f} \rightarrow \mathbb{R}^{P \times M_{\text{in}}}$ from a graph with P nodes, similar to CNNs, a fully connected layer in a graph convolutional network is a linear combination of weights linking all input features to outputs. Let us denote $f_l^p(x)$ as the feature in l th feature map of the p th node, then we can derive a fully connected layer for $q = 1, \dots, Q$ as:

$$f_q^{\text{out}}(x) = \xi\left(\sum_{p=1}^P \sum_{l=1}^{M_{\text{in}}} F_{P \times M_{\text{in}} \times Q} f_l^p(x)\right) \quad (8)$$

where Q is the number output channels indexed by q , F is trainable weight with size $P \times M_{\text{in}} \times Q$, $\xi(t)$ is the non-linear activation function, e.g. ReLU: $\xi(t) = \max(0, t)$. For the remainder of the paper, we use $\text{FC}(Q)$ to indicate a fully connected layer with Q output dimensions, comprising the results of (8).

3.5. Residual Graph CNNs

Inspired by the idea of ResNet [24], we propose residual graph CNNs in order to resolve the well-known degradation problem inherent with increasing number of layers (depth) in graph CNNs [34]. We apply residual connections for NVS-based object classification, as shown in the related block of Fig. 2. Consider the plain (non-residual) baseline is a graph convolutional layer with the kernel size of 5 in each dimension, followed by a batch normalization [26] that accelerates the convergence of the learning process. We consider a ‘‘shortcut’’ connection as a graph convolution layer with kernel size of 1 in each dimension, which matches the dimension of the output feature maps, and is also followed by batch normalization. Then we perform element-wise addition of the node feature between shortcut and the baseline, with ReLU activation function. We denote the resulting graph residual block as $\text{Res}_g(c_{\text{in}}, c_{\text{out}})$, with c_{in} input feature maps and c_{out} output feature maps.

We follow the common architectural pattern for feed-forward networks of interlaced convolution layers and pooling layers topped by fully-connected layers. For an input graph, a single convolutional layer is firstly applied, followed by batch normalization, and max pooling. This is then followed by L graph residual blocks, each followed by a max pooling layer. Finally, two fully connected layers map the features to classes. For example, for $L = 2$, we have the following architecture: $\text{Conv} \rightarrow \text{MaxP} \rightarrow \text{Res}_g \rightarrow \text{MaxP} \rightarrow \text{Res}_g \rightarrow \text{MaxP} \rightarrow \text{FC} \rightarrow \text{FC}$.

4. Datasets

In this section, we first describe the existing NVS object classification datasets and then we introduce our dataset that

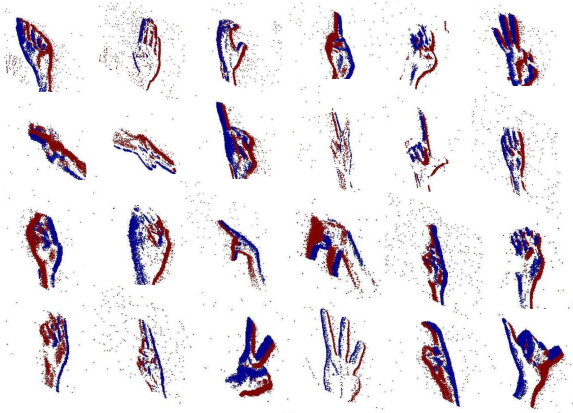


Figure 3: Examples of the ASL-DVS dataset (the visualizations correspond to letters A-Y, excluding J, since letters J and Z involve motion rather than static shape). Events are grouped to image form for visualization (Red/Blue: ON/OFF events).

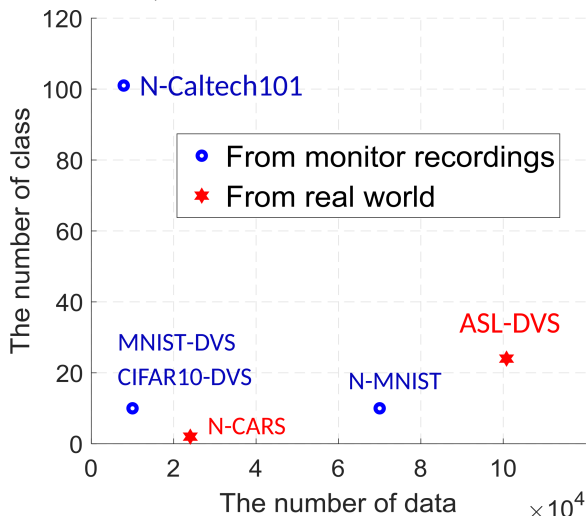


Figure 4: Comparison of proposed NVS dataset w.r.t. the number of class and the number of total size.

provides for an enlarged pool of NVS training and testing examples for handshape classification.

4.1. Existing Neuromorphic Datasets

Many neuromorphic datasets for object classification are converted from standard frame-based datasets, such as N-MNIST [46], N-Caltech101 [46], MNIST-DVS [53] and CIFAR10-DVS [33]. N-MNIST and N-Caltech101 were acquired by an ATIS sensor [51] moving in front of an LCD monitor while the monitor is displaying each sample image. Similarly, MNIST-DVS and CIFAR10-DVS datasets were created by displaying a moving image on a monitor and recording with a fixed DAVIS sensor [35]. Emulator software has also been proposed in order to generate neuromorphic events from pixel-domain video formats using the change of pixel intensities of successively rendered images

[40, 6, 23]. While useful for early-stage evaluation, these datasets cannot capture the real dynamics of an NVS device due to the limited frame rate of the utilized content, as well as the limitations and artificial noise imposed by the recording or emulation environment. To overcome these limitations, N-CARS dataset [57] was created by directly recording objects in urban environments with an ATIS sensor. This two-class real-world dataset comprises 12,336 car samples and 11,693 non-car samples (background) with 0.1 second length. Despite its size, given that it only corresponds to a binary classifier problem, N-CARS cannot represent the behaviour of object classification algorithms on more complex NVS-based tasks.

4.2. American Sign Language Dataset (ASL-DVS)

We present a large 24-class dataset of handshape recordings under realistic conditions. Its 24 classes correspond to 24 letters (A-Y, excluding J) from the American Sign Language (ASL), which we call ASL-DVS. Examples of recordings are shown in Fig 3. The ASL-DVS was recorded with an iniLabs DAVIS240c NVS camera set up in an office environment with low environmental noise and constant illumination. For all recordings, the camera was at the same position and orientation to the persons carrying out the handshapes. Five subjects were asked to pose the different static handshapes relative to the camera in order to introduce natural variance into the dataset. For each letter, we collected 4,200 samples (total of 100,800 samples) and each sample lasts for approximately 100 milliseconds. As is evident from Fig. 3, our ASL-DVS dataset presents a challenging task for event-based classifiers, due to the subtle differences between the finger positioning of certain letters, such as N and O (first two letters in row 3). Fig. 4 shows a comparison of existing NVS datasets w.r.t. the number of classes and total size. Within the landscape of existing datasets, our ASL-DVS is a comparably complex dataset with the largest number of labelled examples. We therefore hope that this will make it a useful resource for researchers to build comprehensive model for NVS-based object recognition, especially given the fact that it comprises real-world recordings. ASL-DVS and related code can be found at this link: <https://github.com/PIX2NVS/NVS2Graph>.

5. Experiments

5.1. Comparison to the State-of-the-Art

In our experiments, the datasets of Fig. 4 are used to validate our algorithm. For the N-MNIST, MNIST-DVS and N-CARS datasets, we use the predefined training and testing splits, while for N-Caltech101, CIFAR10-DVS and ASL-DVS, we follow the experiment setup of Sironi [57]: 20% of the data is randomly selected for testing and the remaining is used for training. For each sample, we randomly ex-

Table 1: Top-1 accuracy of our CNNs w.r.t. the state of the art & other graph convolution networks.

Model	N-MNIST	MNIST-DVS	N-Caltech101	CIFAR10-DVS	N-CARS	ASL-DVS
H-First [47]	0.712	0.595	0.054	0.077	0.561	-
HOTS [29]	0.808	0.803	0.210	0.271	0.624	-
Gabor-SNN [30, 43]	0.837	0.824	0.196	0.245	0.789	-
HATS [57]	0.991	0.984	0.642	0.524	0.902	-
GIN [63]	0.754	0.719	0.476	0.423	0.846	0.514
ChebConv [17]	0.949	0.935	0.524	0.452	0.855	0.317
GCN [27]	0.781	0.737	0.530	0.418	0.827	0.811
MoNet [38]	0.965	0.976	0.571	0.476	0.854	0.867
G-CNNs (this work)	0.985	0.974	0.630	0.515	0.902	0.875
RG-CNNs (this work)	0.990	0.986	0.657	0.540	0.914	0.901

tract a single 30-millisecond time window of events, as input to our object classification framework. During the non-uniform sampling, the maximal number of events k in each space-time volume is set to 8. When constructing graphs, the radius R is 3, weighted parameters α and β are set to 1 and 0.5×10^{-5} , respectively, and the maximal connectivity degree D_{\max} for each node is 32.

As to the architecture of graph convolution networks, we choose two residual graph blocks for simple datasets N-MNIST and MNIST-DVS ($L = 2$). The architecture of our network for these datasets is $\text{Conv}(1, 32) \rightarrow \text{MaxP}(32) \rightarrow \text{Res}_g(32, 64) \rightarrow \text{MaxP}(64) \rightarrow \text{Res}_g(64, 128) \rightarrow \text{MaxP}(128) \rightarrow \text{FC}(128) \rightarrow \text{FC}(Q)$, with Q is the number of classes of each dataset, and the cluster size in each pooling layer is 2×2 , 4×4 and 7×7 , respectively. For the remaining datasets, three residual graph blocks ($L=3$) are used, and the utilized network architecture is $\text{Conv}(1, 64) \rightarrow \text{MaxP}(64) \rightarrow \text{Res}_g(64, 128) \rightarrow \text{MaxP}(128) \rightarrow \text{Res}_g(128, 256) \rightarrow \text{MaxP}(256) \rightarrow \text{Res}_g(256, 512) \rightarrow \text{MaxP}(512) \rightarrow \text{FC}(1024) \rightarrow \text{FC}(Q)$. Since the datasets are recorded from different sensors, the spatial resolution of each sensor is different (i.e., DAVIS240c: 240×180 , DAVIS128 & ATIS: 128×128), leading to various maximum coordinates for the graph. We therefore set the cluster size in pooling layers in two categories; (i) N-Caltech101 and ASL-DVS: 4×3 , 16×12 , 30×23 and 60×45 ; (ii) CIFAR10-DVS and N-CARS: 4×4 , 6×6 , 20×20 and 32×32 . We also compare the proposed residual graph networks (RG-CNNs) with their corresponding plain graph networks (G-CNNs) that stacked the same number of graph convolutional and pooling layers. The degree of B-spline bases m of all convolutions in this work is set to 1.

In order to reduce overfitting, we add dropout with probability 0.5 after the first fully connected layer and also perform data augmentation. In particular, we spatially scale node positions by a randomly sampled factor within $(0.95, 1)$, perform mirroring (randomly flip node positions

along 0 and 1 axis with 0.5 probability) and rotate node positions around a specific axis by a randomly sampled factor within $[0, 10]$ in each dimension. Networks are trained with the Adam optimizer for 150 epochs, with batch size of 64 and learning rate of 0.001. The learning rate is decayed by a factor of 0.1 after 60 and 110 epochs.

We compare Top-1 classification accuracy obtained from our model with that from HOTS [29], H-First [47], SNN [30, 43] and HATS [57]. For SNN, the results are previously published, while for HOTS, H-First and HATS, we report results from Sironi [57], since we use the same training and testing methodology. The results are shown in Table 1. On five out of the six evaluated datasets, our proposed RG-CNNs consistently outperform these methods and sets a new state-of-the-art, achieving near-perfect classification on smaller datasets, N-MNIST and MNIST-DVS.

Table 1 also includes the classification results stemming from other graph convolutional networks. The architectures of all control networks are the same as our plain graph networks (G-CNNs) in this section, with the only difference being the graph convolutional operation. Here we consider four other graph convolution operations: GCN [27], ChebConv [17], MoNet [38] and GIN [63]. The training details and data augmentation methods are the same as illustrated before. The classification accuracy stemming from all networks of Table 1 indicates that our proposed RG-CNN and G-CNN outperform all other graph convolutional networks.

5.2. Comparison to Deep CNNs

In order to further validate our proposal, we compare our results with conventional deep convolutional networks trained on event-based frames. We train/evaluate on three well-established CNNs; namely, VGG_19 [56], Inception_V4 [59] and ResNet_50 [24]. Given that the format of the required input for these CNNs is frame-based, we group neuromorphic spike events to frame form over a random time segment of 30ms, similar to the grouping images of Zhu [65]. The two-channel event images have the same resolution as the NVS sensor, with each channel encoding the

Table 2: Top-1 accuracy of our graph CNNs with graph input w.r.t. CNNs with image form input.

Model	N-MNIST	MNIST-DVS	N-Caltech101	CIFAR10-DVS	N-CARS	ASL-DVS
VGG_19 [56]	0.972	0.983	0.549	0.334	0.728	0.806
Inception_V4 [59]	0.973	0.985	0.578	0.379	0.864	0.832
ResNet_50 [24]	0.984	0.982	0.637	0.558	0.903	0.886
G-CNNs (this work)	0.985	0.974	0.630	0.515	0.902	0.875
RG-CNNs (this work)	0.990	0.986	0.657	0.540	0.914	0.901

Table 3: Complexity (GFLOPs) and size (MB) of networks.

Model	GFLOPs	Size (MB)
VGG_19 [56]	19.63	143.65
Inception_V4 [59]	12.25	42.62
ResNet_50 [24]	3.87	25.61
G-CNNs	0.39	18.81
RG-CNNs	0.79	19.46

number of positive and negative events respectively at each position. To avoid overfitting, we supplement the training with heavy data augmentation: we resize the input images such that the smaller side is 256 and keep the aspect ratio, then randomly crop, flip and normalize 224×224 spatial samples of the resized frame. We train all CNNs from scratch using stochastic gradient descent with momentum set to 0.9 and L_2 regularization set to 0.1×10^{-4} , and the learning rate is initialized at 10^{-3} and decayed by a factor of 0.1 every 10k iterations.

The Top-1 classification accuracy of all networks is reported in Table 2, with the implementation of our proposed G-CNNs and RG-CNNs being the same as in Section 5.1. As to reference networks, despite performing comprehensive data augmentation and L_2 regularization to avoid overfitting, the results acquired from conventional CNNs are still below the-state-of-the-art since event images contain far less information (see Fig. 1). However, the accuracy of our proposals surpasses that of conventional frame-based deep CNNs on nearly all datasets.

We now turn our attention to the complexity of our proposals and compare the number of floating-point operations (FLOPs) and the number of parameters of each model. In conventional CNNs, we compute FLOPs for convolution layers as [37]:

$$\text{FLOPs} = 2HW(C_{\text{in}}K^2 + 1)C_{\text{out}} \quad (9)$$

where H , W and C_{in} are height, width and the number of channels of the input feature map, K is the kernel size, and C_{out} is the number of output channels. For graph convolution layers, FLOPs stem from 3 parts [22]; (i) for computation of B-spline bases, there are $N_{\text{edge}}(m + 1)^d$ threads each performing $7d$ FLOPs (4 additions and 3 multiplications), where N_{edge} is the number of edges, m the B-spline basis degree and d the dimension of graph coordinates; (ii) for convolutional operations, the FLOPs count

is $3N_{\text{edge}}C_{\text{in}}C_{\text{out}}(m + 1)^d$, with factor 3 stemming from 1 addition and 2 multiplications in the inner loop of each kernel and C_{in} and C_{out} is the number of input and output channels, respectively; (iii) for scatter operations and the bias term, the FLOPs count is $(N_{\text{edge}} + N_{\text{node}})C_{\text{out}}$, where N_{node} is the number of nodes. In total, we have

$$\begin{aligned} \text{FLOPs} &= N_{\text{edge}}(m + 1)^d(3C_{\text{in}}C_{\text{out}} + 7d) \\ &+ (N_{\text{edge}} + N_{\text{node}})C_{\text{out}} \end{aligned} \quad (10)$$

For fully connected layers, in both conventional CNNs and GCNs, we compute FLOPs as [37] $\text{FLOPs} = (2I - 1)O$, where I is the input dimensionality and O is the output dimensionality. With regards to the number of parameters, for each convolution layer in both CNNs and GCNs, it is $(C_{\text{in}}K^2 + 1)C_{\text{out}}$, while in fully connected layers, it is $(C_{\text{in}} + 1)C_{\text{out}}$. As shown by (10), FLOPs of graph convolution depend on the number of edges and nodes. Since the size of input graph varies per dataset, we opt to report representative results from N-Caltech101 in Table 3. G-CNNs and RG-CNNs have a smaller number of weights and require the less computation compared to deep CNNs. The main reason is that the graph representation is compact, which in turn reduces the amount of data needed to be processed. For N-Caltech101, the average number of nodes of each graph is 1,000, while grouping events into a 2-channel image makes the input size equal to 86,400.

6. Conclusion

We propose and validate graph-based convolutional neural networks for neuromorphic vision sensing based object classification. Our proposed plain and residual-graph based CNNs allow for condensed representations, which in turn allow for end-to-end task training and fast post-processing that matches the compact and non-uniform sampling of NVS hardware. Our results are shown to compete or outperform all other proposals on six datasets, and we propose and make available a new large-scale ASL dataset in order to motivate further progress in the field.

Acknowledgments. This work was funded by EPSRC, grants EP/R025290/1 and EP/P02243X/1, and European Union’s Horizon 2020 research and innovation programme (Marie Skłodowska-Curie fellowship, grant agreement No. 750254).

References

- [1] Filipp Akopyan, Jun Sawada, Andrew Cassidy, Rodrigo Alvarez-Icaza, John Arthur, Paul Merolla, Nabil Imam, Yutaka Nakamura, Pallab Datta, Gi-Joon Nam, et al. Truenorth: Design and tool flow of a 65 mw 1 million neuron programmable neurosynaptic chip. *IEEE Transactions on Computer-Aided Design of Integrated Circuits and Systems*, 34(10):1537–1557, 2015. 2
- [2] James Atwood and Don Towsley. Diffusion-convolutional neural networks. In *Advances in Neural Information Processing Systems*, pages 1993–2001, 2016. 3
- [3] Francisco Barranco, Cornelia Fermüller, and Yiannis Aloimonos. Contour motion estimation for asynchronous event-driven cameras. *Proceedings of the IEEE*, 102(10):1537–1556, 2014. 2
- [4] Francisco Barranco, Cornelia Fermüller, and Yiannis Aloimonos. Bio-inspired motion estimation with event-driven sensors. In *International Work-Conference on Artificial Neural Networks*, pages 309–321. Springer, 2015. 2
- [5] Ryad Benosman, Charles Clercq, Xavier Lagorce, Sio-Hoi Ieng, and Chiara Bartolozzi. Event-based visual flow. *IEEE transactions on neural networks and learning systems*, 25(2):407–417, 2014. 2
- [6] Yin Bi and Yiannis Andreopoulos. Pix2nvs: Parameterized conversion of pixel-domain video frames to neuromorphic vision streams. In *2017 IEEE International Conference on Image Processing (ICIP)*, pages 1990–1994. IEEE, 2017. 2, 6
- [7] Olivier Bichler, Damien Querlioz, Simon J Thorpe, Jean-Philippe Bourgoin, and Christian Gamrat. Extraction of temporally correlated features from dynamic vision sensors with spike-timing-dependent plasticity. *Neural Networks*, 32:339–348, 2012. 2
- [8] Davide Boscaini, Jonathan Masci, Emanuele Rodolà, and Michael Bronstein. Learning shape correspondence with anisotropic convolutional neural networks. In *Advances in Neural Information Processing Systems*, pages 3189–3197, 2016. 3, 4
- [9] Michael M Bronstein, Joan Bruna, Yann LeCun, Arthur Szlam, and Pierre Vandergheynst. Geometric deep learning: going beyond euclidean data. *IEEE Signal Processing Magazine*, 34(4):18–42, 2017. 4
- [10] Tobias Brosch, Stephan Tschechne, and Heiko Neumann. On event-based optical flow detection. *Frontiers in neuroscience*, 9:137, 2015. 2
- [11] Joan Bruna, Wojciech Zaremba, Arthur Szlam, and Yann LeCun. Spectral networks and locally connected networks on graphs. *arXiv preprint arXiv:1312.6203*, 2013. 3, 4
- [12] Marco Cannici, Marco Ciccone, Andrea Romanoni, and Matteo Matteucci. Attention mechanisms for object recognition with event-based cameras. *arXiv preprint arXiv:1807.09480*, 2018. 1, 2
- [13] Marco Cannici, Marco Ciccone, Andrea Romanoni, and Matteo Matteucci. Event-based convolutional networks for object detection in neuromorphic cameras. *arXiv preprint arXiv:1805.07931*, 2018. 1, 2
- [14] Xavier Clady, Sio-Hoi Ieng, and Ryad Benosman. Asynchronous event-based corner detection and matching. *Neural Networks*, 66:91–106, 2015. 2
- [15] Xavier Clady, Jean-Matthieu Maro, Sébastien Barré, and Ryad B Benosman. A motion-based feature for event-based pattern recognition. *Frontiers in neuroscience*, 10:594, 2017. 1, 2
- [16] Gregory Kevin Cohen. *Event-based feature detection, recognition and classification*. PhD thesis, Paris 6, 2016. 1, 2
- [17] Michaël Defferrard, Xavier Bresson, and Pierre Vandergheynst. Convolutional neural networks on graphs with fast localized spectral filtering. In *Advances in neural information processing systems*, pages 3844–3852, 2016. 3, 4, 7
- [18] Tobi Delbruck. Neuromorphic vision sensing and processing. In *Europ. Solid-State Dev. Res. Conf*, pages 7–14, 2016. 1
- [19] Peter U Diehl and Matthew Cook. Unsupervised learning of digit recognition using spike-timing-dependent plasticity. *Frontiers in computational neuroscience*, 9:99, 2015. 2
- [20] Peter U Diehl, Daniel Neil, Jonathan Binas, Matthew Cook, Shih-Chii Liu, and Michael Pfeiffer. Fast-classifying, high-accuracy spiking deep networks through weight and threshold balancing. In *2015 International Joint Conference on Neural Networks (IJCNN)*, pages 1–8. IEEE, 2015. 3
- [21] David K Duvenaud, Dougal Maclaurin, Jorge Iparraguirre, Rafael Bombarell, Timothy Hirzel, Alán Aspuru-Guzik, and Ryan P Adams. Convolutional networks on graphs for learning molecular fingerprints. In *Advances in neural information processing systems*, pages 2224–2232, 2015. 3
- [22] Matthias Fey, Jan Eric Lenssen, Frank Weichert, and Heinrich Müller. Splinecnn: Fast geometric deep learning with continuous b-spline kernels. In *Proceedings of the IEEE Conference on Computer Vision and Pattern Recognition*, pages 869–877, 2018. 3, 4, 8
- [23] Garibaldi Pineda García, Patrick Camilleri, Qian Liu, and Steve Furber. pydvs: An extensible, real-time dynamic vision sensor emulator using off-the-shelf hardware. In *2016 IEEE Symposium Series on Computational Intelligence (SSCI)*, pages 1–7. IEEE, 2016. 2, 6
- [24] Kaiming He, Xiangyu Zhang, Shaoqing Ren, and Jian Sun. Deep residual learning for image recognition. In *Proceedings of the IEEE conference on computer vision and pattern recognition*, pages 770–778, 2016. 1, 2, 5, 7, 8
- [25] Yuhuang Hu, Hongjie Liu, Michael Pfeiffer, and Tobi Delbruck. Dvs benchmark datasets for object tracking, action recognition, and object recognition. *Frontiers in neuroscience*, 10:405, 2016. 2
- [26] Sergey Ioffe and Christian Szegedy. Batch normalization: Accelerating deep network training by reducing internal covariate shift. *ICML*, 2015. 5
- [27] Thomas N Kipf and Max Welling. Semi-supervised classification with graph convolutional networks. *ICLR*, 2017. 3, 7
- [28] Alex Krizhevsky, Ilya Sutskever, and Geoffrey E Hinton. Imagenet classification with deep convolutional neural networks. In *Advances in neural information processing systems*, pages 1097–1105, 2012. 1

- [29] Xavier Lagorce, Garrick Orchard, Francesco Galluppi, Bertram E Shi, and Ryad B Benosman. Hots: a hierarchy of event-based time-surfaces for pattern recognition. *IEEE transactions on pattern analysis and machine intelligence*, 39(7):1346–1359, 2017. 1, 2, 7
- [30] Jun Haeng Lee, Tobi Delbruck, and Michael Pfeiffer. Training deep spiking neural networks using backpropagation. *Frontiers in neuroscience*, 10:508, 2016. 2, 7
- [31] KH Lee, H Woo, and T Suk. Point data reduction using 3d grids. *The International Journal of Advanced Manufacturing Technology*, 18(3):201–210, 2001. 4
- [32] Ron Levie, Federico Monti, Xavier Bresson, and Michael M Bronstein. Cayleynets: Graph convolutional neural networks with complex rational spectral filters. *IEEE Transactions on Signal Processing*, 67(1):97–109, 2017. 3
- [33] Hongmin Li, Hanchao Liu, Xiangyang Ji, Guoqi Li, and Luping Shi. Cifar10-dvs: an event-stream dataset for object classification. *Frontiers in neuroscience*, 11:309, 2017. 2, 6
- [34] Qimai Li, Zhichao Han, and Xiao-Ming Wu. Deeper insights into graph convolutional networks for semi-supervised learning. In *Thirty-Second AAAI Conference on Artificial Intelligence*, 2018. 5
- [35] Patrick Lichtsteiner, Christoph Posch, and Tobi Delbruck. A 128x128, 120 db 30mw latency asynchronous temporal contrast vision sensor. *IEEE journal of solid-state circuits*, 43(2):566–576, 2008. 6
- [36] Jonathan Masci, Davide Boscaini, Michael Bronstein, and Pierre Vandergheynst. Geodesic convolutional neural networks on riemannian manifolds. In *Proceedings of the IEEE international conference on computer vision workshops*, pages 37–45, 2015. 3, 4
- [37] Pavlo Molchanov, Stephen Tyree, Tero Karras, Timo Aila, and Jan Kautz. Pruning convolutional neural networks for resource efficient inference. *ICLR*, 2017. 8
- [38] Federico Monti, Davide Boscaini, Jonathan Masci, Emanuele Rodola, Jan Svoboda, and Michael M Bronstein. Geometric deep learning on graphs and manifolds using mixture model cnns. In *Proceedings of the IEEE Conference on Computer Vision and Pattern Recognition*, pages 5115–5124, 2017. 3, 4, 7
- [39] Elias Mueggler, Chiara Bartolozzi, and Davide Scaramuzza. Fast event-based corner detection. In *British Machine Vis. Conf.(BMVC)*, volume 1, 2017. 2
- [40] Elias Mueggler, Henri Rebecq, Guillermo Gallego, Tobi Delbruck, and Davide Scaramuzza. The event-camera dataset and simulator: Event-based data for pose estimation, visual odometry, and slam. *The International Journal of Robotics Research*, 36(2):142–149, 2017. 2, 6
- [41] Emre Neftci, Srinjoy Das, Bruno Pedroni, Kenneth Kreutz-Delgado, and Gert Cauwenberghs. Event-driven contrastive divergence for spiking neuromorphic systems. *Frontiers in neuroscience*, 7:272, 2014. 2
- [42] E Neftci, C Posch, E Chicca, and H Ishibuchi. Neuromorphic engineering. *Computational Intelligence*, 2:278, 2015. 1
- [43] Daniel Neil, Michael Pfeiffer, and Shih-Chii Liu. Phased lstm: Accelerating recurrent network training for long or event-based sequences. In *Advances in Neural Information Processing Systems*, pages 3882–3890, 2016. 7
- [44] Peter O’Connor, Daniel Neil, Shih-Chii Liu, Tobi Delbruck, and Michael Pfeiffer. Real-time classification and sensor fusion with a spiking deep belief network. *Frontiers in neuroscience*, 7:178, 2013. 3
- [45] Garrick Orchard and Ralph Etienne-Cummings. Bioinspired visual motion estimation. *Proceedings of the IEEE*, 102(10):1520–1536, 2014. 2
- [46] Garrick Orchard, Ajinkya Jayawant, Gregory K Cohen, and Nitish Thakor. Converting static image datasets to spiking neuromorphic datasets using saccades. *Frontiers in neuroscience*, 9:437, 2015. 6
- [47] Garrick Orchard, Cedric Meyer, Ralph Etienne-Cummings, Christoph Posch, Nitish Thakor, and Ryad Benosman. Hfirst: a temporal approach to object recognition. *IEEE transactions on pattern analysis and machine intelligence*, 37(10):2028–2040, 2015. 7
- [48] Xi Peng, Bo Zhao, Rui Yan, Huajin Tang, and Zhang Yi. Bag of events: an efficient probability-based feature extraction method for aer image sensors. *IEEE transactions on neural networks and learning systems*, 28(4):791–803, 2017. 2
- [49] José Antonio Pérez-Carrasco, Bo Zhao, Carmen Serrano, Begona Acha, Teresa Serrano-Gotarredona, Shouchun Chen, and Bernabé Linares-Barranco. Mapping from frame-driven to frame-free event-driven vision systems by low-rate rate coding and coincidence processing–application to feedforward convnets. *IEEE transactions on pattern analysis and machine intelligence*, 35(11):2706–2719, 2013. 3
- [50] Les Piegl and Wayne Tiller. *The NURBS book*. Springer Science & Business Media, 2012. 4
- [51] Christoph Posch, Daniel Matolin, and Rainer Wohlgenannt. A qvga 143 db dynamic range frame-free pwm image sensor with lossless pixel-level video compression and time-domain cds. *IEEE Journal of Solid-State Circuits*, 46(1):259–275, 2011. 1, 6
- [52] Aliaksei Sandryhaila and José MF Moura. Discrete signal processing on graphs. *IEEE transactions on signal processing*, 61(7):1644–1656, 2013. 3, 4
- [53] Teresa Serrano-Gotarredona and Bernabé Linares-Barranco. Poker-dvs and mnist-dvs. their history, how they were made, and other details. *Frontiers in neuroscience*, 9:481, 2015. 2, 6
- [54] David I Shuman, Sunil K Narang, Pascal Frossard, Antonio Ortega, and Pierre Vandergheynst. The emerging field of signal processing on graphs: Extending high-dimensional data analysis to networks and other irregular domains. *arXiv preprint arXiv:1211.0053*, 2012. 3, 4
- [55] Martin Simonovsky and Nikos Komodakis. Dynamic edge-conditioned filters in convolutional neural networks on graphs. In *Proceedings of the IEEE Conference on Computer Vision and Pattern Recognition*, pages 3693–3702, 2017. 5
- [56] Karen Simonyan and Andrew Zisserman. Very deep convolutional networks for large-scale image recognition. *arXiv preprint arXiv:1409.1556*, 2014. 7, 8
- [57] Amos Sironi, Manuele Brambilla, Nicolas Bourdis, Xavier Lagorce, and Ryad Benosman. Hats: histograms of aver-

- aged time surfaces for robust event-based object classification. In *Proceedings of the IEEE Conference on Computer Vision and Pattern Recognition*, pages 1731–1740, 2018. [1](#), [2](#), [6](#), [7](#)
- [58] Evangelos Stamatias, Daniel Neil, Francesco Galluppi, Michael Pfeiffer, Shih-Chii Liu, and Steve Furber. Scalable energy-efficient, low-latency implementations of trained spiking deep belief networks on spinnaker. In *2015 International Joint Conference on Neural Networks (IJCNN)*, pages 1–8. IEEE, 2015. [3](#)
- [59] Christian Szegedy, Sergey Ioffe, Vincent Vanhoucke, and Alexander A Alemi. Inception-v4, inception-resnet and the impact of residual connections on learning. In *Thirty-First AAAI Conference on Artificial Intelligence*, 2017. [7](#), [8](#)
- [60] Cheston Tan, Stephane Lallee, and Garrick Orchard. Benchmarking neuromorphic vision: lessons learnt from computer vision. *Frontiers in neuroscience*, 9:374, 2015. [1](#)
- [61] Valentina Vasco, Arren Glover, and Chiara Bartolozzi. Fast event-based harris corner detection exploiting the advantages of event-driven cameras. In *2016 IEEE/RSJ International Conference on Intelligent Robots and Systems (IROS)*, pages 4144–4149. IEEE, 2016. [2](#)
- [62] Chu Wang, Babak Samari, and Kaleem Siddiqi. Local spectral graph convolution for point set feature learning. In *Proceedings of the European Conference on Computer Vision (ECCV)*, pages 52–66, 2018. [3](#), [4](#)
- [63] Keyulu Xu, Weihua Hu, Jure Leskovec, and Stefanie Jegelka. How powerful are graph neural networks? *ICLR*, 2019. [7](#)
- [64] Fan Yang, Wongun Choi, and Yuanqing Lin. Exploit all the layers: Fast and accurate cnn object detector with scale dependent pooling and cascaded rejection classifiers. In *Proceedings of the IEEE conference on computer vision and pattern recognition*, pages 2129–2137, 2016. [5](#)
- [65] Alex Zihao Zhu, Liangzhe Yuan, Kenneth Chaney, and Kostas Daniilidis. Ev-flownet: self-supervised optical flow estimation for event-based cameras. *arXiv preprint arXiv:1802.06898*, 2018. [1](#), [2](#), [7](#)