

PROCEEDINGS

Open Access



Thinking forward: promising but unproven ideas for future intensive care

John J. Marini^{9*}, Daniel DeBacker³, Luciano Gattinoni⁶, Can Ince¹, Ignacio Martin-Loeches⁷, Pierre Singer⁵, Mervyn Singer⁴, Martin Westphal² and Jean-Louis Vincent⁸

Abstract

Progress toward determining the true worth of ongoing practices or value of recent innovations can be glacially slow when we insist on following the conventional stepwise scientific pathway. Moreover, a widely accepted but flawed conceptual paradigm often proves difficult to challenge, modify or reject. Yet, most experienced clinicians, educators and clinical scientists privately entertain untested ideas about how care could or should be improved, even if the supporting evidence base is currently thin or non-existent. This symposium encouraged experts to share such intriguing but unproven concepts, each based upon what the speaker considered a logical but unproven rationale. Such free interchange invited dialog that pointed toward new or neglected lines of research needed to improve care of the critically ill. In this summary of those presentations, a brief background outlines the rationale for each novel and deliberately provocative unconfirmed idea endorsed by the presenter.

Keywords: Innovation, Paradigm, Ascorbic acid, Lactate, Nanotechnology, Post-intensive care syndrome, Nutritional support, Antibiotic overuse, Subcellular microscopy, Lithium

Introduction

The pathway to verified science often begins with intuition or flashes of insight. Without question, we need rigorous testing and confirmation before widespread implementation of a proposed innovation for medical practice. What seems to make conceptual sense is often proven wrong. In our field of critical care, however, it can be argued that what has become the traditional method of truth seeking has let us down. Attractive as it might seem, the clinical trial crucible is imperfect, inefficient, and applicable to a highly restricted number of testable questions. The list is long regarding initially accepted practices derived from the clinical trials base that later were overturned by more recent and more nuanced studies. Negative clinical trials tell us relatively little. Progress in our field, though undoubtedly real, has been rather slow and inefficient, prompting some experts to rethink the entire process of testing and validation. Yet, most experienced clinicians, educators, and clinical scientists privately entertain untested ideas about how care

could or should be improved, even if the supporting evidence base is currently thin or non-existent. The following symposium encouraged each presenter to describe a personal favorite but unproven idea that might serve as a conceptual starting point along new or neglected lines of research or treatment aimed at improving care of the critically ill. We caution that although each presentation drew from well-established observations, the interpretations, extensions, and implications made by the presenters remain their own: speculative and unverified—at least for now.

Unproven ideas for future critical care practice

Daniel De Backer: use of vitamin C as a therapeutic adjunct in sepsis

Background: While being around for some time for its anti-oxidant properties, vitamin C has been recently pushed under spotlight by a publication of Marik et al. suggesting that vitamin C, in addition to hydrocortisone and thiamine, may improve organ function and survival [1]. While this study has many limitations including its before/after design, this publication generated a lot of enthusiasm and several trials are nowadays underway trying to replicate these findings.

* Correspondence: marin002@umn.edu

⁹Regions Hospital, University of Minnesota, MS11203B, 640 Jackson Street, Minneapolis/St.Paul, MN 55101, USA

Full list of author information is available at the end of the article



Vitamin C seems to have pleiotropic effects in sepsis. Vitamin C has been shown to increase arterial pressure in septic patients [1, 2], and this effect may be mediated by an increase in tetrahydrobiopterin availability, promoting catecholamine and vasopressin synthesis [2].

Vitamin C seems also to have beneficial effects on the microvasculature. In experimental sepsis, vitamin C improved microvascular perfusion. Interestingly, this protective microvascular effect remained effective even when vitamin C was administered up to 24 h after the onset of sepsis. This effect is dependent on endothelial NO synthase [3] and may be mediated by its impact on tetrahydrobiopterin, an essential cofactor of NO synthase. Interestingly, while promoting NO production on endothelial NO synthase, vitamin C also inhibits inducible NO synthase, limiting the production of detrimental radical species and in particular peroxynitrite.

However, even though vitamin C improved microvascular perfusion, it has limited impact on other markers of endothelial function. In particular, it failed to blunt the increase in endothelial permeability [4].

Hence, it seems that vitamin C may have interesting effects in sepsis, in particular through an improvement of endothelial reactivity and in microvascular perfusion. However, there remain many unsolved questions including adequate patient selection (should it be based on disease severity or based on vitamin C plasma levels?); timing of intervention (Just after initial resuscitation? At recognition of disease? As rescue therapy?); best dosing scheme, administered in isolation or combined with thiamine and hydrocortisone; and toxicity. These questions need to be solved in order to transform this unconfirmed idea into a clinical use.

Idea: Appropriately dosed vitamin C is a low-risk, low-cost, and potentially helpful addition to our current armamentarium used against sepsis and septic shock.

Luciano Gattinoni: impaired cellular O₂ utilization, not sufficient perfusion and O₂ availability, is the underlying defect causing “lactic acidosis” in most cases of septic shock

Background: Aggressive fluid resuscitation has become an accepted cornerstone of sepsis management, driven by the belief that hypotension and hyperlactatemia usually arise from inadequate oxygen availability in vital tissues [5]. However, hyperlactatemia may occur independently of tissue oxygen availability, as indicated by the coexistence of hyperlactatemia and low, normal, or high central venous oxygen saturation (ScvO₂). In the absence of hypoxemia, central venous oxygen desaturation, although an imperfect marker, generally indicates greater than normal O₂ extraction elicited by presumed inadequacy of O₂ delivery. Yet, ScvO₂ often remains

normal in sepsis, even as metabolic acidosis proceeds. Moreover although the coexistence of hyperlactatemia and low pH is conventionally referred to as “lactic acidosis,” the direct link between excess lactate and acidemia is not straightforward [6]. In the traditional view, lactate and free protons [lactic acid] are the “abnormal” products of glycolysis in anoxic tissue. Yet, according to the “lactate shuttle theory,” lactate is the “normal” (i.e., expected) end-product of glycolysis, regardless of the oxygen tissue tension, is normally produced without a net release of free protons, and does not directly affect pH [7]. Thus, although lactate is a useful marker of the severity of shock [8], well-functioning kidneys regulate the electrolyte balance, compensating for the challenge to ionic balance, and acidemia seldom develops. In the absence of fully compensatory mechanisms, however, any excess of lactate must result in a negative base excess. In septic patients, such compensations may or may not be present, and therefore, there is no direct association between lactate levels and acidemia. Indeed, arterial pH, lactate, and ScvO₂—which according to the traditional interpretative view should be tightly interlinked—are often present in contradictory combinations. Maintenance of normal ScvO₂ suggests that targeting a further boost in oxygen *delivery* to peripheral tissues, e.g., by vigorous fluid administration, may be a misdirected response to lactic acidosis—especially when kidney perfusion and function are well preserved.

Idea: Modulation of the aggressiveness of fluid resuscitation in accordance with measurements of ScvO₂ and determination of the base excess component not attributable to lactate—the “alactic base excess,” a simple calculation that could help assess renal compensating ability for the stress of metabolic acidosis.

Can Ince: functional imaging of living cells in vivo

Background: In recent years, remote imaging of the tubular structures of the gastrointestinal tract has been accomplished by radiofrequency communication from small ingested camera capsules. Although less invasive than traditional endoscopy, such methods simply establish the feasibility of acquiring anatomical data non-invasively at sites far removed from the caregiver. In the not so distant future, this principle will be extended to the cellular level within vasculature of key vital organs [9]. Perhaps more importantly, such imaging and tissue targeting may afford the opportunity to anatomically focus our interventions, such as drug delivery and assess their effects. Techniques already in development demonstrate the ability of synthetic biology devices to locate and tag vital tissues of interest [10]. Three currently being investigated are Caspase (apoptotic) tracking, specially engineered bacteria that home to tumor cells and tag by bioluminescence, and

cell-type classifiers that determine key gene expressions and release marker molecules (Fig. 1).

Delivery of such trackers and of drugs may be actively driven by “micromotors” which are very small (micro-n-sized) particles that can move themselves [11]. These micromotors propel themselves in a specific direction autonomously when placed in a chemically appropriate liquid environment. Although potentially there are several different micromotor types and mechanisms applicable to medicine, key examples naturally occurring are the biological motors of bacteria and other self-propelled cells. Synthetically, researchers have exploited oxidation-reduction reactions to produce chemical gradients, local fluid flows, or streams of bubbles that propel these synthetic micromotors through the chemical media of body fluids. Methodologies to image their transit and that of other markers must be considered in the early stage of development.

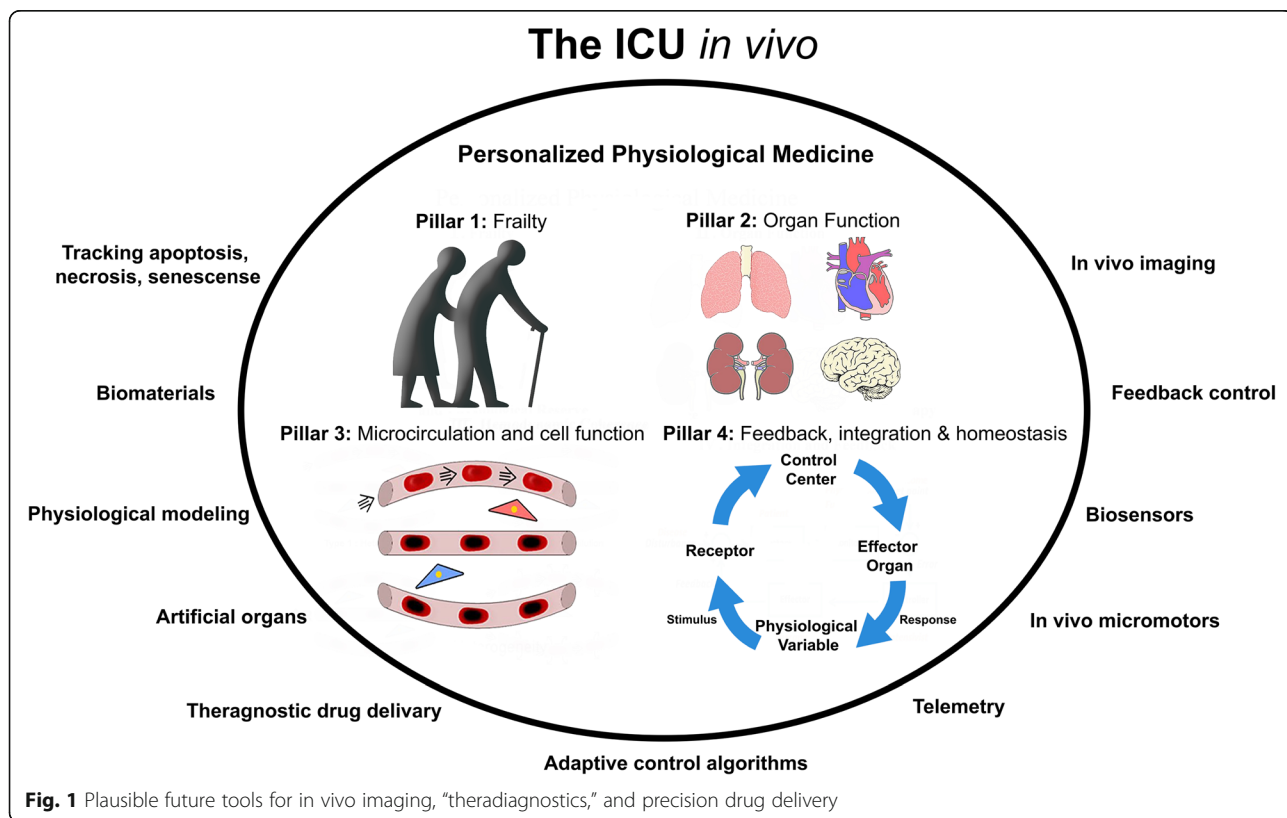
Dynamic, contrast-enhanced ultrasound (CEUS) has been used experimentally to determine bubble transit time and thereby characterize perfusion through the microcirculation of the normal and sepsis altered kidney [12]. Other imaging methodologies that show considerable promise for bedside use include side-stream and incident darkfield imaging hand-held vital microscopes [13]. Such hand-held vital microscopes have been shown capable of imaging the richness and

filling of microvessels and in identifying and quantifying leukocytes in the microcirculation of accessible tissues (e.g., sublingual) in a variety of non-invasive and surgical settings [14]. Although progress has been rapid, to this point, tissues substantially deeper than the subsurface layer remain out of reach by these methodologies. The time does not seem so far off that precision medicine will be abetted by intravascular telemetric nano-imaging, self-propelled searching capsules, in vivo functional assessment of targeted cell function, and the imaging of the benefit and consequences of drug delivery.

Idea: Microcirculatory imaging, cellular function assessment, and tissue-specific therapeutic targeting by nano-biotechnology.

John J. Marini: cognitive decline during and following ICU care may be averted by encouraging cues that maintain normal variations of physiology and behavior

Background: As often said, “variety is the spice of life.” More than that, variations of physiology, alertness, and cognition are essential components and markers of health; loss of such variations characterizes depleted reserves and serious, life-threatening illness [15]. For example, variations of respiratory breathing depth and rhythm exemplify effortless breathing, whereas the stress of exercise narrows that variation to a more



metronome-like pattern. Narrowing of heart rhythm variability has been linked to loss of cardiac reserve. Circadian rhythms of many organ systems, e.g., certain key stress hormones, e.g., cortisol, also blunted by critical illness and are not restored by such uni-modal ICU interventions as light variation [16]. In the throes of the initial crisis, the body responds to the challenge by exuberant and often dysfunctional responses. As clinicians, we seek to blunt those responses and to “stabilize” physiologic parameters. Understandably, our initial goal is to achieve a viable plateau and to minimize variations from our set standard. We provide monotonous tidal volumes, fluid infusions, vasopressors, and feedings. We suppress alertness, consciousness, and pain. These interventions, while appropriate for the initial stage, have the well-recognized potential for harm when inappropriately prolonged [15].

The post-intensive care syndrome (PICS) is a pervasive and highly morbid consequence of critical illness and its management. Current approaches to its prevention focus on early mobilization, attention to avoiding excessive sedation, preventing delirium [17], and preserving sleep quality. These help preserve muscle strength and in the prevention and treatment of delirium [18]. Recent trials of non-pharmacologic interventions, however, have yielded disappointing results [19]. No approach to date has been shown to halt PICS-associated cognitive decline.

Another common adage is that “what you do not use, you lose.” Myriad physical and psychosocial signals normally keep the healthy brain oriented to the variability of daily life, and functional reinforcement and pruning of synaptic pathways may be occurring continually, especially during sleep [20]. Extraction of the patient from the familiar to the unfamiliar, threatening, and monotonous routines of the ICU that that normal environment may be adversely train the brain, forming dysfunctional connections and pruning away many that are normally used. It is also possible that monotonous two-way cross-talk between body and brain may deliver neuronal messages of ongoing disease, rather than of recovering health and resilience. Finally, as sustained isolation of even the healthy mind suggests, delirium might be the “default state” to which we might all regress if removed from re-orienting cues of daily living.

Idea: We should prioritize maintenance of normal daily psychosocial interactions and variations of activity during the post-resuscitation and recovery phases of ICU care to help prevent cognitive decline and debility.

Ignacio Martin-Loeches: highly personalized medicine to optimize sepsis management and outcomes

Background: At present, sepsis remains a potentially lethal condition approached from the platform of

imprecise working diagnosis. Some patients benefit from this style of management, whereas many others receive little benefit or are even harmed by our attempts to help. Although somewhat controversial, a significant body of evidence indicates that early administration of appropriate antibiotics aids in achieving a satisfactory result. Currently, the two components of this strategy, appropriate antibiotics and early intervention, are both sub-optimal. Lacking accurate microbiological diagnosis at treatment onset, powerful broad spectrum antibiotics with unwanted side effects are typically given that are later pared and/or replaced once the organism and sensitivities are known. In a significant number of cases, the responsible organism responsible for sepsis—if any—remains unknown. Likewise, we have made clear progress toward earlier antimicrobial intervention, but systemic logistical delays between order and “hang time” occur all too commonly along the “supply chain” of critical care delivery. Currently deployed biomarkers such as procalcitonin and c-reactive protein help establish and quantitate the intensity of tissue injury response but do not nail the responsible organism.

The response of the host to the septic challenge is a key and largely under-supported determinant of outcome. Some patients have an overly exuberant defensive response to the infective challenge that extends the attack to healthy tissues (e.g., vasoplegia and ARDS), whereas others are constitutively or functionally immunosuppressed and need a boost. For example, hydrocortisone may benefit those with plasma cytokine levels above a certain threshold, whereas others are not helped (or even injured) by steroid therapy [21]. On the other hand, polyclonal antibodies to boost immunity may benefit only those whose concentrations of immunoglobulins and inflammatory markers are low and high, respectively. Even when such evaluations can be implemented, not all septic patients will benefit; the degree of organ dysfunction, as indicated by the SOFA score, may be a helpful determinant of responsiveness.

A variety of well-established and newer tools for improving diagnostic and therapeutic precision are on the near horizon [22]. Nanotechnologies hold promise to quickly diagnose, selectively treat, and monitor the root causes of these septic conditions [23]. Apart from improved precision of antibiotic targeting, other novel treatments have shown exciting potential. For example, in well-selected patients, exogenous mesenchymal stem cells (MSCs) may help treat sepsis by their intrinsic ability to home to injured tissue, secrete paracrine signals to limit systemic and local inflammation, decrease apoptosis in threatened tissues, stimulate neoangiogenesis, activate resident stem cells, beneficially modulate immune cells, and exhibit direct antimicrobial activity. These effects are associated with reduced organ

dysfunction and improved survival in animal models. Finally, agents such as cilengitide may prevent adherence of pathogens such as *Staphylococcus aureus* and *Escherichia coli* to the blood vessel endothelium, with experimentally demonstrated therapeutic benefit [24].

Idea: Utilize newer precision tools to rapidly identify the underlying causes, select well-targeted treatments, and boost host responses to sepsis.

Mervyn Singer: restricted and abbreviated use of antimicrobials for infection

Background: Few therapies are as well entrenched in ICU practice as the early and aggressive use of antibiotics to suppress infection [25]. A well-discussed and appropriate concern is the need to avoid the indiscriminate use of these agents to prevent emergence of life-threatening microbial resistance to these vital armaments. Yet, the idea that appropriate antibiotics are invariably helpful when infection develops is never seriously challenged. It may be wise to re-examine this mandate. Antibiotics are effective not only against the offending organism but also the host tissues, as well. Apart from their widely acknowledged potential for side effects, renal and hepatic dysfunction, the ability of certain agents to impair mitochondrial function (e.g., linezolid) [26] and to adversely alter both immunity and the microbiome is extensively documented. Few would withhold an effective antimicrobial in the face of a known symptomatic infection. However, considering their predictable tendencies to produce adverse consequences, one might logically wonder: “Just how solid is the evidence that antibiotics reduce mortality?” It turns out, less reassuring than one might think.

Many patients survived what might be considered life-threatening illnesses in the pre-antibiotic era. Early comparisons of sulphonamide antibiotics with placebo demonstrated a modest reduction of mortality from pneumonia, but an increased incidence of complications (e.g., empyema). In the pre-antibiotic eras that preceded our own, surgery of chest and abdomen for advanced infections was frequently successful without their use. In more recent years, enthusiasm for earliest possible antibiotic intervention has waned with the demonstration by multiple prospective studies that reasonable delays make very little difference to eventual outcome of sepsis and septic shock [25, 27]. Some experimental data indicate that the rapid early release of bacterial cell products by bactericidal antibiotics exacerbate severity. In certain settings, biomarker-targeted decisions for antibiotic intervention rather than automatic broad spectrum coverage may often make better sense [28], and de-escalation strategies for life-threatening infections appear to offer a survival advantage over sustained antibiotic treatment. Very recent reports indicate that fewer antibiotics and shorter

treatment courses lessen adverse side effects and might even improve survival. Indeed, courses as brief as 1–3 days may be as effective as those traditionally recommended [29]. Taken together, such data prompt careful consideration of the need for antibiotic treatment and urge that targeted antibiotics be given for the shortest effective time.

Idea: Curtail the duration of antimicrobial treatment and avoid the use of antibiotics whenever feasible to do so.

Pierre Singer: precision nutrition for intensive care

Background: The sustained stresses of critical illness require appropriate and individualized nutritional support but often outstrip our current attempts to provide it. These shortcomings undoubtedly contribute to deficits that contribute to lasting disability that is both difficult and slow to repair. Our current approaches are rather indiscriminate, fail to scale appropriately to individual needs, and are unmodified during the changing requirements during the rescue, recovery, and re-strengthening phases of the patient’s ICU trajectory. Deficits of calories and protein develop quickly and early in the hospital course, deepening as the relatively immobile gut is unable to accept full target loads by the enteral route, often resulting in regurgitation or interruption of enteral administration. Moreover, the gastrointestinal tract may not absorb with normal efficiency (due to edema, etc.) and insufficient energy is delivered to cope with the metabolic stress. The natural pattern of intermittent oral meals almost invariably yields to continuous feedings with monitoring of gastric residuals—is nutritional support provided at all during the initial demanding phase? Finally, assessment of nutritional balance—requirements and demands—is currently confined to relatively crude and/or slowly reactive measurements of serum proteins such as albumin and its precursors, electrolytes, and glucose.

There has been substantial progress along multiple fronts to address these shortcomings [30]. Among many advances, the gut microbiome perhaps has received the most attention for its value in determining and assessing patient health status. Although of intense interest, this element of nutritional science does not stand alone. Smart nasogastric tubes that sense and maintain appropriate gut positioning and nutrient infusion rates (so as to avoid intolerance, regurgitation and vomiting) should help reach nutritional goals and avoid both discomfort and complications.

Improved understanding and recent innovations in technology and informatics that are applicable to the bedside promise to advance the precision and appropriateness of our future nutritional care. For example, the quantity of exhaled carbon dioxide can be noninvasively measure on an ongoing basis to give a clearer picture of

the energy needs. The burgeoning fields of metabolomics and proteomics hold the potential to assess nutritional status, set appropriate adjustments of the nutrient mix, and monitor progress through the varied stages of acute illness. Recent evidence indicates that such enhanced precision may be profitably integrated into severity of illness indexes such as the SOFA score, cluster analyses, and inflammatory cytokine marker profiles to prognosticate with enhanced proficiency the outcome of life-threatening sepsis [31]. “Big Data” analytics of relevant populations and perhaps of the myriad points of physiologic data and laboratory variables that pertain to the individual have only begun to show their decision support potential [32].

Idea: Utilize modern advances in technological, molecular science, and informatics to better monitor and deliver nutritional requirements for optimized and nuanced care for the individual through all stages of critical illness.

Martin Westphal: lithium to treat disorders of the “bipolar” kidney

Background: Lithium is a very reactive metal representing a key constituent of powerful modern batteries including electric cars. Its clinical use goes back to 1847, when Dr. Alfred Garrod investigated the role of lithium in the treatment of gout. Interestingly, this approach was successful only in patients suffering from bipolar disorders as co-morbidity. However, it took more than 100 years to launch lithium as mood stabilizer in patients with bipolar disorders and to leverage its effects for the treatment of mania and prophylaxis of manic-depressive illness (<http://www.lowdosedlithium.com/the-history>).

Recent research in rodent models revealed that lithium also exerts meaningful neuroprotection in stroke, fragile X syndrome, amyotrophic lateral sclerosis, and Huntington’s, Alzheimer’s, and Parkinson’s disease [33]. Among others, inhibition of glycogen synthase kinase type 3 [GSK3] appears to play a key role in this context. GSK3 is a ubiquitously expressed serine/threonine protein kinase, implicated in the processes of tissue injury, repair, and regeneration in multiple organ systems. Likewise, there is evidence that inhibition of this protein kinase conveys renal protection [34].

In fact, lithium inhibits GSK3, thereby blunting inflammation and oxidative stress as well as mediating kidney tissue repair [35]. It has been shown in a murine model of lipopolysaccharide [LPS]-elicited acute kidney injury (AKI) that a single-intraperitoneal injection of a low dose of lithium chloride [40 mg/kg] at the time of LPS administration reduces renal tissue injury, inflammation, and dysfunction, which is associated with a survival benefit [36]. Likewise, it has been

reported that a delayed administration of lithium attenuates cisplatin- and ischemia/reperfusion-induced AKI in a dose-dependent manner. Specifically, lithium promotes renal tubular epithelia repopulation, improves kidney repair, and accelerates renal salvage. The authors concluded that pharmacologic targeting of GSK3 represents a promising approach to treat established AKI [37].

Currently, lithium is registered neither for prevention nor for treatment of AKI, but clinical studies are underway to elucidate its efficacy. Since high doses of lithium have been linked to kidney damage in the past [33], a better understanding of the dose-response relationship is crucial from a safety point of view. Once the safety is established, re-purposing lithium with the goal to prevent and treat AKI is straightforward and could make the depressed kidney happy.

Idea: Low-dose lithium may represent a viable option both to prevent AKI in patients at risk and to treat established AKI.

About this supplement

This article has been published as part of *Critical Care*, Volume 23 Supplement 1, 2019: Future of Critical Care Medicine (FCCM) 2018. The full contents of the supplement are available at <https://ccforum.biomedcentral.com/articles/supplements/volume-23-supplement-1>.

Authors’ contributions

All authors read and approved the final manuscript.

Competing interests

The authors declare that they have no competing interests.

Publisher’s Note

Springer Nature remains neutral with regard to jurisdictional claims in published maps and institutional affiliations.

Author details

¹Erasmus University Medical Center, Rotterdam, Netherlands. ²University of Muenster, Muenster, Germany. ³CHIREC Hospitals, Brussels, Belgium. ⁴University College London Medical School, London, UK. ⁵Rabin Medical Center, Tel Aviv, Israel. ⁶University of Gottingen, Gottingen, Germany. ⁷St. James Hospital, Dublin, Ireland. ⁸Erasmie Hospital, Universite Libre de Bruxelles, Brussels, Belgium. ⁹Regions Hospital, University of Minnesota, MS11203B, 640 Jackson Street, Minneapolis/St.Paul, MN 55101, USA.

Received: 15 March 2019 Accepted: 29 April 2019

Published: 14 June 2019

References

1. Marik PE, Khangoora V, Rivera R, Hooper MH, Catravas J. Hydrocortisone, vitamin C, and thiamine for the treatment of severe sepsis and septic shock: a retrospective before-after study. *Chest*. 2017;151(6):1229–38.
2. Carr AC, Shaw GM, Fowler AA, Natarajan R. Ascorbate-dependent vasopressor synthesis: a rationale for vitamin C administration in severe sepsis and septic shock? *Crit Care*. 2015;27(19):418.
3. Tymi K, Li F, Wilson JX. Septic impairment of capillary blood flow requires NADPH oxidase but not NOS and is rapidly reversed by ascorbate through an eNOS-dependent mechanism. *Crit Care Med*. 2008;36:2355–62.
4. Bark BP, Grande PO. The effect of vitamin C on plasma volume in the early stage of sepsis in the rat. *Intensive Care Med Exp*. 2014;2(1):11.
5. Ince C, Mik EG. Microcirculatory and mitochondrial hypoxia in sepsis, shock, and resuscitation. *J Appl Physiol* (1985). 2016;120:226–35.

6. James JH, Luchette FA, McCarter FD, et al. Lactate is an unreliable indicator of tissue hypoxia in injury or sepsis. *Lancet*. 1999;354:505–8.
7. Brooks GA. The science and translation of lactate shuttle theory. *Cell Metab*. 2018;27:757–85.
8. Brealey D, Brand M, Hargreaves I, et al. Association between mitochondrial dysfunction and severity and outcome of septic shock. *Lancet*. 2002;360:219–23.
9. Ince C. Intensive care medicine in 2050: the ICU in vivo. *Intensive Care Med*. 2017;43(11):1700–2.
10. Slomovica S, Pardeeb K, Collins JL. Synthetic biology devices for in vitro and in vivo diagnostics. *PNAS*. 2015;112(47):14429–35.
11. Chałupniak A, Morales-Narváez E, Merkoçi A. Micro and nanomotors in diagnostics. *Adv Drug Deliv Rev*. 2015;95:104–16.
12. Lima A, van Rooij T, Ergin B, Sorelli M, Ince Y, Specht PAC, Mik EG, Bocchi L, Kooiman K, de Jong N, Ince C. Dynamic contrast-enhanced ultrasound identifies microcirculatory alterations in sepsis-induced acute kidney injury. *Crit Care Med*. 2018;46(8):1284–92.
13. Ince C, Boerma EC, Ceconi M, De Backer D, Duranteau J, Pinsky MR, Artigas A, Teboul JL, Reiss IKM, Aldecoa C, Hutchings SD, Donati A, Maggiorini M, Taccone FS, Hernandez G, Payen D, Tibboel D, Martin DS, Zarbock A, Monnet X, Dubin A, Bakker J, Vincent JL, Scheeren TWL. Second consensus on the assessment of sublingual microcirculation in critically ill patients: results from a task force of the European Society of Intensive Care Medicine. *Intensive Care Med*. 2018;44(3):281–99.
14. Uz Z, van Gulik TM, Aydemirli MD, Guerci P, Ince Y, Cuppen D, Ergin B, Aksu U, de Mol BA, Ince C. Identification and quantification of human microcirculatory leukocytes using handheld video microscopes at the bedside. *J Appl Physiol*. 2018;124(6):1550–7.
15. Marini JJ. Time-sensitive therapeutics. *Crit Care*. 2017;21(Suppl 3):317. <https://doi.org/10.1186/s13054-017-1911-y>.
16. Annane D. Light therapy and chronobiology in critical illness. *Lancet Respir Med*. 2016;4(3):167–8. [https://doi.org/10.1016/S2213-2600\(16\)00055-2](https://doi.org/10.1016/S2213-2600(16)00055-2).
17. Brummel NE, Girard TD. Preventing delirium in the intensive care unit. *Crit Care Clin*. 2013;29(1):51–65. <https://doi.org/10.1016/j.ccc.2012.10.007>.
18. Vincent JL, Shehabi Y, Walsh TS, Pandharipande PP, Ball JA, Spronk P, Longrois D, Strøm T, Conti G, Funk GC, Badenes R, Mantz J, Spies C, Takala J. Comfort and patient-centred care without excessive sedation: the eCASH concept. *Intensive Care Med*. 2016;42(6):962–71. <https://doi.org/10.1007/s00134-016-4297-4>.
19. Bannon L, McGaughy J, Verghis R, Clarke M, McAuley DF, Blackwood B. The effectiveness of non-pharmacological interventions in reducing the incidence and duration of delirium in critically ill patients: a systematic review and meta-analysis. *Intensive Care Med*. 2018. <https://doi.org/10.1007/s00134-018-5452-x>.
20. Bower JE, Irwin MR. Mind-body therapies and control of inflammatory biology: a descriptive review. *Brain Behav Immun*. 2016;51:1–11. <https://doi.org/10.1016/j.bbi.2015.06.012>.
21. Bentzer P, Fjell C, Walley KR, Boyd J, Russell JA. Plasma cytokine levels predict response to corticosteroids in septic shock. *Intensive Care Med*. 2016;42(12):1970–9. <https://doi.org/10.1007/s00134-016-4338-z>.
22. Coopersmith CM, De Backer D, Deutschman CS, Ferrer R, Lat I, Machado FR, Martin GS, Martin-Loeches I, Nunnally ME, Antonelli M, Evans LE, Hellman J, Jog S, Kesecioglu J, Levy MM, Rhodes A. Surviving sepsis campaign: research priorities for sepsis and septic shock. *Intensive Care Med*. 2018;44(9):1400–26. <https://doi.org/10.1007/s00134-018-5175-z>.
23. Martin-Loeches I, Forster R, Prina-Mello A. Intensive care medicine in 2050: nanotechnology. Emerging technologies and approaches and their impact on critical care. *Intensive Care Med*. 2018;44(8):1299–301. <https://doi.org/10.1007/s00134-017-5002-y> Epub 2017 Nov 24.
24. McHale TM, Garcarena CD, Fagan RP, Smith SGJ, Martin-Loeches I, Curley GF, Fitzpatrick F, Kerrigan SW. Inhibition of vascular endothelial cell leak following *Escherichia coli* attachment in an experimental model of sepsis. *Crit Care Med*. 2018;46(8):e805–10. <https://doi.org/10.1097/CCM.0000000000003219>.
25. Ferrer R, Martin-Loeches I, Phillips G, Osborn TM, Townsend S, Dellinger RP, Artigas A, Schorr C, Levy MM. Empiric antibiotic treatment reduces mortality in severe sepsis and septic shock from the first hour: results from a guideline-based performance improvement program. *Crit Care Med*. 2014;42(8):1749–55. <https://doi.org/10.1097/CCM.0000000000000330>.
26. Kalghatgi S, Spina CS, Costello JC, Liesa M, Morones-Ramirez JR, Slomovic S, Molina A, Shirihai OS, Collins JJ. Bactericidal antibiotics induce mitochondrial dysfunction and oxidative damage in mammalian cells. *Sci Transl Med*. 2013;5(192):192ra85. <https://doi.org/10.1126/scitranslmed.3006055>.
27. de Groot B, Ansems A, Gerling DH, Rijpsma D, van Amstel P, Linzel D, Kostense PJ, Jonker M, de Jonge E. The association between time to antibiotics and relevant clinical outcomes in emergency department patients with various stages of sepsis: a prospective multi-center study. *Crit Care*. 2015;19:194. <https://doi.org/10.1186/s13054-015-0936-3>.
28. Schuetz P, Wirz Y, Sager R, Christ-Crain M, Stolz D, Tamm M, Bouadma L, Luyt CE, Wolff M, Chastre J, Tubach F, Kristoffersen KB, Burkhardt O, Welte T, Schroeder S, Nobre V, Wei L, Bucher HC, Annane D, Reinhart K, Falsey AR, Branche A, Damas P, Nijsten M, de Lange DW, Deliberato RO, Oliveira CF, Maravić-Stojković V, Verduri A, Beghé B, Cao B, Shehabi Y, Jensen JS, Corti C, van Oers JAH, Beishuizen A, Girbes ARJ, de Jong E, Briel M, Mueller B. Effect of procalcitonin-guided antibiotic treatment on mortality in acute respiratory infections: a patient level meta-analysis. *Lancet Infect Dis*. 2018;18(1):95–107. [https://doi.org/10.1016/S1473-3099\(17\)30592-3](https://doi.org/10.1016/S1473-3099(17)30592-3).
29. Sawyer RG, Claridge JA, Nathens AB, Rotstein OD, Duane TM, Evans HL, Cook CH, O'Neill PJ, Mazuski JE, Askari R, Wilson MA, Napolitano LM, Namias N, Miller PR, Dellinger EP, Watson CM, Coimbra R, Dent DL, Lowry SF, Cocanour CS, West MA, Banton KL, Cheadle WG, Lipsett PA, Guidry CA, Popovsky K, STOP-IT Trial Investigators. Trial of short-course antimicrobial therapy for intraabdominal infection. *N Engl J Med*. 2015;372(21):1996–2005. <https://doi.org/10.1056/NEJMoa1411162>.
30. Singer P, Reintam Blaser A, Berger MM, et al. ESPEN guideline on clinical nutrition in the intensive care unit. *Clin Nutr*. 2018; epub ahead of publication.
31. Mickiewicz B, Tam P, Jenne CN, Leger C, Wong J, Winston BW, Doig C, Kubes P, Vogel HJ. Alberta Sepsis Network. Integration of metabolic and inflammatory mediator profiles as a potential prognostic approach for septic shock in the intensive care unit. *Crit Care*. 2015;19:11. <https://doi.org/10.1186/s13054-014-0729-0>.
32. Celi LA, Zimolzak AJ, Stone DJ. Dynamic clinical data mining: search engine-based decision support. *JMIR Med Inform*. 2014;2:e13.
33. Chiu CT, Chuang DM. Molecular actions and therapeutic potential of lithium in preclinical and clinical studies of CNS disorders. *Pharmacol Ther*. 2010;128(2):281–304.
34. Gong R, Wang P, Dworkin L. What we need to know about the effect of lithium on the kidney. *Am J Physiol Renal Physiol*. 2016;311:F1168–71.
35. Alsady M, Baumgarten R, Deen PM, de Groot T. Lithium in the kidney: friend and foe? *J Am Soc Nephrol*. 2016;27(6):1587–95.
36. Wang Y, Huang WC, Wang CY, Tsai CC, Chen CL, Chang YT, Kai JI, Lin CF. Inhibiting glycogen synthase kinase-3 reduces endotoxaemic acute renal failure by down-regulating inflammation and renal cell apoptosis. *Br J Pharmacol*. 2009;157(6):1004–13.
37. Bao H, Ge Y, Wang Z, Zhuang S, Dworkin L, Peng A, Gong R. Delayed administration of a single dose of lithium promotes recovery from AKI. *J Am Soc Nephrol*. 2014;25(3):488–500.

Ready to submit your research? Choose BMC and benefit from:

- fast, convenient online submission
- thorough peer review by experienced researchers in your field
- rapid publication on acceptance
- support for research data, including large and complex data types
- gold Open Access which fosters wider collaboration and increased citations
- maximum visibility for your research: over 100M website views per year

At BMC, research is always in progress.

Learn more biomedcentral.com/submissions

