



The relationship between eGFR slope and subsequent risk of vascular outcomes and all-cause mortality in type 2 diabetes: the ADVANCE-ON study

Megumi Oshima^{1,2} · Min Jun¹ · Toshiaki Ohkuma¹ · Tadashi Toyama^{1,2} · Takashi Wada² · Mark E. Cooper³ · Samy Hadjadj⁴ · Pavel Hamet⁵ · Stephen Harrap⁶ · Giuseppe Mancia⁷ · Michel Marre⁸ · Bryan Williams⁹ · John Chalmers¹ · Mark Woodward^{1,10,11} · Vlado Perkovic¹ · on behalf of the ADVANCE Collaborative Group

Received: 4 April 2019 / Accepted: 5 June 2019
© The Author(s) 2019

Abstract

Aims/hypothesis Some studies have reported that annual change in eGFR (eGFR slope) is associated with the future risk of end-stage kidney disease, cardiovascular disease and death in general or chronic kidney disease cohorts. However, the benefits of using eGFR slopes for prediction of major clinical outcomes in diabetes are unclear.

Methods We used data from the Action in Diabetes and Vascular Disease: Preterax and Diamicon MR Controlled Evaluation (ADVANCE) trial and the ADVANCE Post-Trial Observational Study (ADVANCE-ON). After excluding the first 4 months during which an acute fall in eGFR was induced by the initiation of an ACE inhibitor and diuretic combination agent, eGFR slopes were estimated by linear mixed models, using three measurements of eGFR at 4, 12 and 24 months after randomisation over 20 months, and categorised according to quartiles. Cox regression models were used to evaluate adjusted HRs for the study's primary outcome, a composite of major renal events, major macrovascular events and all-cause mortality during the subsequent follow-up from 24 months after randomisation.

Results A total of 8,879 participants (80%) were included in this cohort. The mean age was 65.6 years (SD 6.3), the mean eGFR was $75 \text{ ml min}^{-1} (1.73 \text{ m})^{-2}$ (SD 17) and the median urinary albumin/creatinine ratio was $14 \mu\text{g/mg}$ (interquartile range 7–38). The mean eGFR slope was $-0.63 \text{ ml min}^{-1} (1.73 \text{ m})^{-2} \text{ year}^{-1}$ (SD 1.75). Over a median follow-up of 7.6 years following the 20-month eGFR slope ascertainment period, 2,221 participants (25%) met the primary outcome. An annual substantial decrease in eGFR (lowest 25%, $<-1.63 \text{ ml min}^{-1} [1.73 \text{ m}]^{-2} \text{ year}^{-1}$) was significantly associated with the subsequent risk of the primary outcome (HR 1.30 [95% CI 1.17, 1.43]) compared with a stable change in eGFR (middle 50%, -1.63 to 0.33). An annual

Electronic supplementary material The online version of this article (<https://doi.org/10.1007/s00125-019-4948-4>) contains peer-reviewed but unedited supplementary material, which is available to authorised users.

✉ Mark Woodward
mark.woodward@georgeinstitute.ox.ac.uk

✉ Vlado Perkovic
VPerkovic@georgeinstitute.org.au

¹ The George Institute for Global Health, University of New South Wales, Sydney, Level 5, 1 King St, Newtown, NSW 2042, Australia

² Department of Nephrology and Laboratory Medicine, Kanazawa University, Ishikawa, Japan

³ Diabetes Domain, Baker IDI Heart and Diabetes Institute, Melbourne, VIC, Australia

⁴ Department of Endocrinology, Institut du Thorax, Inserm, CNRS, CHU Nantes, Nantes, France

⁵ Centre de Recherche, Centre Hospitalier de l'Université de Montréal (CRCHUM), Montréal, QC, Canada

⁶ Department of Physiology, Royal Melbourne Hospital, University of Melbourne, Melbourne, VIC, Australia

⁷ Department of Medicine and Surgery, University of Milan-Bicocca, Milan, Italy

⁸ Department of Endocrinology, Hôpital Bichat-Claude Bernard, Université Paris, Paris, France

⁹ Institute of Cardiovascular Science, University College London and National Institute of Health Research UCL Hospitals Biomedical Research Centre, London, UK

¹⁰ The George Institute for Global Health, University of Oxford, 1st Floor, Hayes House, 75 George Street, Oxford OX1 2BQ, UK

¹¹ Department of Epidemiology, Johns Hopkins University, Baltimore, MD, USA

Research in context

What is already known about this subject?

- Limited studies have reported that eGFR slope may be associated with the future risk of end-stage kidney disease, cardiovascular disease and all-cause mortality

What is the key question?

- Does eGFR slope predict the risk of clinical outcomes, including non-renal outcomes, in people with type 2 diabetes?

What are the new findings?

- In 8,879 participants with type 2 diabetes, an annual substantial decrease in eGFR over 20 months is associated with the subsequent risk of a composite of major renal events, macrovascular events and all-cause mortality (HR 1.30 [95% CI 1.17, 1.43]) compared with a stable change in eGFR
- The strong relationship between eGFR slope and the risk of clinical outcomes is consistent, even after adjustment for multiple risk factors for disease progression, which was not systematically performed in previous studies

How might this impact on clinical practice in the foreseeable future?

- Our findings suggest that eGFR slope is a useful surrogate endpoint for renal outcomes in type 2 diabetes, and could also be used as a prognostic factor for identifying individuals at high risk of cardiovascular disease and premature death

substantial increase in eGFR (highest 25%, >0.33) had no significant association with the risk of the primary outcome (HR 0.96 [95% CI 0.86, 1.07]).

Conclusions/interpretation Our study supports the utility of eGFR slope in type 2 diabetes as a surrogate endpoint for renal outcomes, as well as a prognostic factor for identifying individuals at high risk of cardiovascular disease and all-cause mortality.

Trial registry number ClinicalTrials.gov registration no. NCT00145925 and no. NCT00949286

Keywords Cardiovascular disease · eGFR slope · End-stage kidney disease · Mortality · Surrogate endpoint · Type 2 diabetes

Abbreviations

ACEi	ACE inhibitor
ADVANCE	The Action in Diabetes and Vascular disease: Preterax and Diamicon MR Controlled Evaluation
ADVANCE-ON	ADVANCE Post-Trial Observational Study
ARB	Angiotensin-II receptor blocker
CKD	Chronic kidney disease
ESKD	End-stage kidney disease
IQR	Interquartile range
RAAS	Renin-angiotensin-aldosterone-system
UACR	Urine albumin/creatinine ratio

Introduction

Diabetic kidney disease develops in approximately 40% of individuals with diabetes and can lead to poor outcomes such as end-stage kidney disease (ESKD), cardiovascular disease and premature death [1–4]. It is generally well known that

people with diabetes have more rapid decline in kidney function compared with those without diabetes [5–7]. Early recognition of diabetic kidney disease progression is thus critical for the prevention of such adverse long-term outcomes.

In recent years, there has been a growing interest in the assessment of the prognostic utility of short-term changes in eGFR, as well as the therapeutic utility of agents that might ameliorate these changes. Previous meta-analyses have shown significant associations among 30% and 40% decline in eGFR with subsequent risks of ESKD and mortality in individuals with and without diabetes [8, 9]. However, percentage change in eGFR in these studies was calculated using only two measurements, which largely ignores the trajectory of eGFR over time. Accordingly, recent studies have assessed eGFR slope-based approaches using multiple measurements of eGFR to determine the associations between annual change in eGFR and subsequent risk of ESKD [10], cardiovascular disease [11] and all-cause mortality [12–14]. However, such studies have been limited due to the inclusion of participants with advanced chronic kidney disease (CKD) [10, 13, 14] and relatively short periods of follow-up [11, 12].

The objective of our study was thus to examine the prognostic value of eGFR slope in predicting clinical outcomes in individuals with type 2 diabetes, using data from the Action in Diabetes and Vascular disease: Preterax and Diamicron MR Controlled Evaluation (ADVANCE) trial, an RCT in individuals with type 2 diabetes, and its post-trial follow-up (ADVANCE Post-Trial Observational Study [ADVANCE-ON]), which has followed participants for up to 10 years post randomisation.

Methods

Study design and population Our study used data from the ADVANCE and ADVANCE-ON studies. ADVANCE (ClinicalTrials.gov registration no. NCT00145925) was a 2×2 factorial RCT evaluating the effects of BP-lowering and intensive blood glucose-lowering treatment on vascular outcomes in individuals with type 2 diabetes. A detailed description of the design has been published previously [15–17]. In brief, a total of 11,140 individuals with type 2 diabetes aged ≥ 55 years at high risk of cardiovascular events were recruited from 215 centres in 20 countries between June 2001 and March 2003. After a 6-week run-in period on open fixed low-dose perindopril-indapamide (2.0 mg/0.625 mg) and usual glucose-lowering treatment, participants were randomly assigned in a factorial design to the two treatment comparisons: a double blind comparison of the perindopril- indapamide combination (initially 2.0 mg/0.625 mg increasing to 4.0 mg/1.25 mg daily after 3 months) compared with matching placebo; and an open comparison of gliclazide-based intensive therapy (target HbA_{1c} ≤ 48 mmol/mol [6.5%]) compared with standard therapy for glucose control based on routine guidelines. The median durations of follow-up for the BP- and glucose-lowering trial interventions were 4.4 and 5.0 years, respectively. The ADVANCE-ON study (ClinicalTrials.gov registration no. NCT00949286) was a post-trial follow-up study, comprising 8,494 of the 10,082 surviving participants at the end of the randomised treatment phase [18]. The median total follow-up period (i.e. including both ADVANCE and ADVANCE-ON) was 9.9 years until the final visits which occurred between January 2013 and February 2014. Approvals for the original trial and the post-trial follow-up phase were obtained from the institutional review board of each centre and all participants provided written informed consent.

Derivation of eGFR slope The current study was restricted to those with three measurements of eGFR within a baseline period (hereinafter referred to as the eGFR slope ascertainment period) (Fig. 1). Participants assigned to BP-lowering medication had an acute fall in eGFR during the first 4 months after randomisation compared with those assigned to placebo.

An acute fall in eGFR is generally known to be induced by the initiation of BP-lowering medication that blocks the renin-angiotensin-aldosterone-system (RAAS), including ACE inhibitors (ACEis) or angiotensin-II receptor blockers (ARBs) [19]. To account for this ACEi-induced fall in eGFR, in the primary analysis, the eGFR slope of each included participant was calculated based on three eGFR measurements recorded at 4, 12 and 24 months after randomisation (i.e., over a 20-month eGFR slope ascertainment period).

Study outcomes and follow-up The primary outcome for this study was the composite of major renal events (defined as requirement for chronic dialysis or kidney transplantation, or death from renal disease), major macrovascular events (defined as nonfatal and fatal myocardial infarction, nonfatal and fatal stroke or other cardiovascular death) and all-cause mortality. Secondary outcomes included the individual components of the primary outcome. Participants were followed from the end of the eGFR ascertainment period until the first of the study outcomes, death or the end of follow-up (Fig. 1). Study outcomes recorded during the randomised treatment phase were reviewed and validated by an independent endpoint adjudication committee. Outcomes occurring during post-trial follow-up were reported by the study centres using the standardised definitions adopted during the trial, without central adjudication [18].

Statistical methods Continuous variables were reported as means with SDs for variables with approximately symmetrical distributions. Results for variables with skewed distributions were presented as median and interquartile range (IQR) and were transformed into natural logarithms before analysis. We summarised baseline characteristics according to quartiles of eGFR slope (< -1.63 ml min⁻¹ [1.73 m]⁻² year⁻¹ [lowest 25%; defined as ‘substantial decrease in eGFR’], -1.63 to 0.33 [middle 50%; defined as ‘stable eGFR’] and > 0.33 [highest 25%; defined as ‘substantial increase in eGFR’]). Linear trends across categories of eGFR slope were tested by linear regression analysis and logistic regression analysis, as appropriate.

The eGFR slope was estimated using linear mixed models with random intercept. Cox regression models were used to estimate the adjusted HRs and their corresponding 95% CIs for categories of eGFR slope and to compare a substantial decrease in eGFR with stable eGFR and a substantial increase in eGFR with stable eGFR. Cox models were adjusted for covariates including registration values of age, sex, region of residence (Asia or non-Asia), duration of diabetes, log-transformed urine albumin/creatinine ratio (UACR), systolic BP and diastolic BP, a history of macrovascular disease, smoking habits, drinking habits, treated hypertension, HbA_{1c}, HDL-cholesterol, LDL-cholesterol, log-transformed triacylglycerol and BMI, 4-month eGFR (at the beginning of

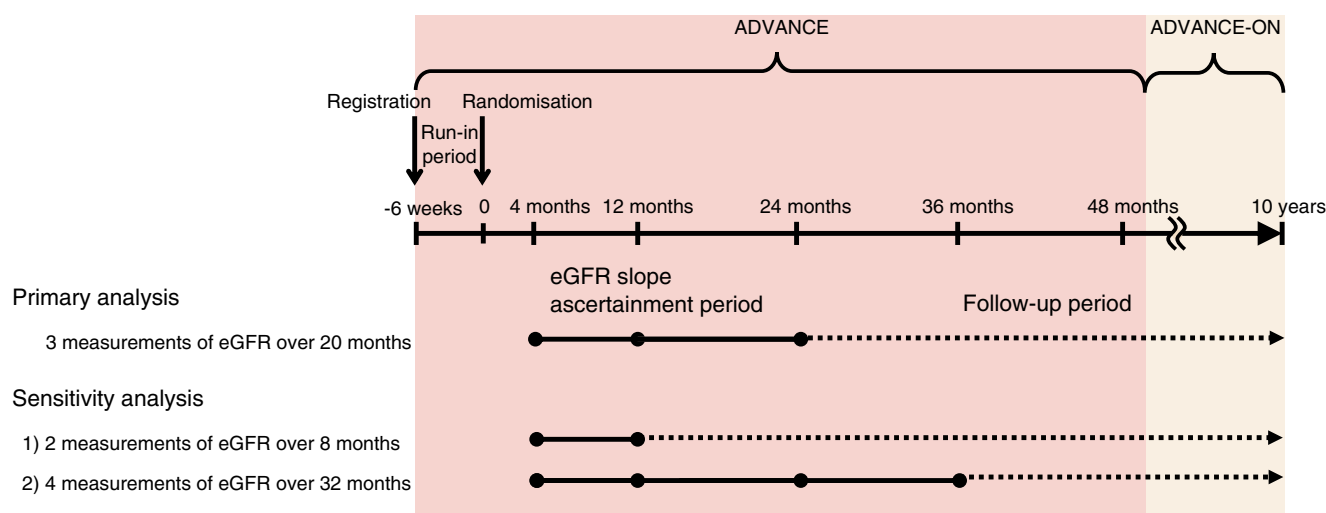


Fig. 1 Study design

the eGFR slope ascertainment period, calculated using the Chronic Kidney Disease Epidemiology Collaboration (CKD-EPI) creatinine equation [20], and ADVANCE randomised treatment allocation (BP and glucose treatment). A test for linear trend was performed using the category of eGFR slope as a continuous variable in Cox models. An additional quadratic term for eGFR slope was also fitted in Cox models to test for a residual quadratic effect. In addition, restricted cubic splines for eGFR slopes were fitted using no change in eGFR ($0 \text{ ml min}^{-1} [1.73 \text{ m}]^{-2} \text{ year}^{-1}$) as the reference point (knots were placed at $-5, -3, -1, 1$ and $3 \text{ ml min}^{-1} [1.73 \text{ m}]^{-2} \text{ year}^{-1}$, as used in previous studies [10, 14]).

We performed the subgroup analyses according to covariates including sex, region of residence, eGFR ($<60, 60\text{--}89$ or $\geq 90 \text{ ml min}^{-1} [1.73 \text{ m}]^{-2}$) and UACR ($<30, 30\text{--}300$ or $>300 \mu\text{g/mg}$) at registration and ADVANCE randomised treatment allocation (BP- and glucose-lowering treatment). For sensitivity analyses, we repeated the analysis by using eGFR measurements at the following study points (Fig. 1): (1) 4 and 12 months after randomisation (i.e., over an 8-month eGFR slope ascertainment period); and (2) 4, 12, 24 and 36 months after randomisation (i.e., over a 32-month eGFR slope ascertainment period).

Considering that both 30% and 40% declines in eGFR are sometimes used as surrogate endpoints for CKD progression, sensitivity analyses used percentage change in eGFR (calculated based on two eGFR measurements recorded at 4 and 24 months after randomisation) instead of eGFR slope. We used the Akaike information criterion, the Schwarz's Bayesian information criterion and c-statistics to assess the discrimination of the Cox models for predicting study outcomes by including eGFR slope or percentage change in eGFR in addition to covariates.

All analyses were conducted using Stata/MP, version 15 (Stata Corporation, College Station, TX, USA). A two-sided p value <0.05 was considered statistically significant.

Results

Patient characteristics Of the 11,140 participants in the ADVANCE trial, 8,879 individuals (80%) were included in our final cohort (electronic supplementary material [ESM] Fig. 1). The mean age of the cohort was 65.6 years (SD 6.3), 58% were men, the mean duration of diabetes was 7.8 years at registration (SD 6.3), the mean eGFR was $75 \text{ ml min}^{-1} (1.73 \text{ m})^{-2}$ (SD 17) and the median UACR was $14 \mu\text{g/mg}$ (IQR 7–38) (Table 1). Registration characteristics of participants in this cohort were approximately similar to those of the entire trial population (ESM Table 1) [16, 17]. The mean annual change in eGFR was $-0.63 \text{ ml min}^{-1} (1.73 \text{ m})^{-2} \text{ year}^{-1}$ (SD 1.75) (ESM Fig. 2). Compared with participants with stable eGFR (middle 50%, -1.63 to $0.33 \text{ ml min}^{-1} [1.73 \text{ m}]^{-2} \text{ year}^{-1}$), those with a substantial decrease in eGFR (lowest 25%, <-1.63) were more likely to be older, a non-smoker, to have a history of macrovascular disease and to have higher levels of albuminuria and lower levels of eGFR. In the multivariable analysis for risk factors associated with eGFR slopes (ESM Table 2), the mean eGFR slope of decline was steeper in individuals with older age, higher levels of UACR and HbA_{1c}, and lower level of HDL-cholesterol, while the mean eGFR slope was flatter in individuals with lower eGFR.

Clinical outcomes during follow-up Over a median follow-up period of 7.6 years (IQR 3.8–8.7) following the 20-month eGFR slope ascertainment period, 2,221 participants (25%) met the primary composite outcome (117 major renal events [1.3%], 1,395 major macrovascular events [16%] and 1,450 deaths [16%]). Overall, we observed a strong negative linear association between the category of eGFR slope and subsequent risk of the primary composite outcome (p for linear trend <0.001 ; p for quadratic effect 0.01; Fig. 2). Compared with stable eGFR, a substantial decrease in eGFR was significantly associated with an increased risk of the primary study outcome (HR 1.30 [95% CI 1.17, 1.43]; $p < 0.001$), whereas a

Table 1 Registration characteristics according to categories of eGFR slopes

Characteristic	Total	eGFR slopes (ml min ⁻¹ [1.73 m] ⁻² year ⁻¹)			p for trend
		Substantial decrease in eGFR Lowest 25% (<-1.63)	Stable eGFR Middle 50% (-1.63 to 0.33)	Substantial increase in eGFR Highest 25% (>0.33)	
<i>N</i>	8879	2220	4440	2219	
Age (years; mean [SD])	65.6 (6.3)	66.0 (6.4)	65.8 (6.3)	64.6 (6.1)	<0.001
Men (<i>n</i> [%])	5108 (58)	1160 (52)	2730 (61)	1218 (55)	0.08
Residence in Asia (<i>n</i> [%])	3523 (40)	915 (41)	1590 (36)	1018 (46)	0.002
Duration of diabetes (years; mean [SD])	7.8 (6.3)	8.1 (6.2)	7.6 (6.2)	8.0 (6.5)	0.86
History of macrovascular disease (<i>n</i> [%])	2742 (31)	741 (33)	1349 (30)	652 (29)	0.004
Current treated hypertension (<i>n</i> [%])	6050 (68)	1580 (72)	2988 (67)	1482 (67)	0.002
Current smoking (<i>n</i> [%])	1224 (14)	255 (11)	617 (14)	352 (16)	<0.001
Current alcohol drinking (<i>n</i> [%])	2638 (30)	561 (25)	1466 (33)	611 (28)	0.10
UACR (μg/mg; median [IQR])	14 (7–38)	17 (8–48)	14 (7–35)	13 (7–33)	<0.001
eGFR (ml min ⁻¹ [1.73 m] ⁻² ; mean [SD])	75 (17)	74 (18)	75 (18)	77 (16)	<0.001
Systolic BP (mmHg; mean [SD])	145 (21)	145 (22)	144 (21)	144 (21)	0.04
Diastolic BP (mmHg; mean [SD])	81 (11)	80 (11)	81 (11)	81 (11)	0.35
HbA _{1c} (mmol/mol; mean [SD])	58 (16)	60 (17)	58 (16)	57 (16)	<0.001
HbA _{1c} (%; mean [SD])	7.5 (1.5)	7.6 (1.6)	7.5 (1.5)	7.4 (1.5)	<0.001
HDL-cholesterol (mmol/l; mean [SD])	1.3 (0.3)	1.2 (0.3)	1.3 (0.3)	1.3 (0.4)	0.002
LDL-cholesterol (mmol/l; mean [SD])	3.1 (1.0)	3.1 (1.0)	3.1 (1.0)	3.2 (1.1)	0.006
Triacylglycerol (mmol/l; median [IQR])	2.0 (1.2–2.3)	1.7 (1.2–2.4)	1.6 (1.2–2.3)	1.6 (1.1–2.3)	0.21
BMI (kg/m ² ; mean [SD])	28.2 (5.2)	28.3 (5.5)	28.3 (5.1)	27.9 (4.9)	0.01
Randomised BP-lowering treatment (<i>n</i> [%])	4438 (50)	1180 (53)	2199 (50)	1059 (48)	<0.001
Randomised intensive blood glucose control (<i>n</i> [%])	4486 (51)	1151 (52)	2249 (51)	1086 (49)	0.05

Asia includes China, India, Malaysia and the Philippines

substantial increase in eGFR had no effect (HR 0.96 [95% CI 0.86, 1.07]; $p < 0.42$). We observed similar associations between categories of eGFR slope and the risk of the individual components of the primary composite outcome: increased risk for a substantial decrease in eGFR, but no evidence of a difference in risk for a substantial increase in eGFR, compared with stable eGFR. As shown in Fig. 3, greater annual declines in eGFR were associated with higher risks of study outcomes compared with no change in eGFR ($0 \text{ ml min}^{-1} [1.73 \text{ m}]^{-2} \text{ year}^{-1}$). Among participants with eGFR slopes of $-3 \text{ ml min}^{-1} [1.73 \text{ m}]^{-2} \text{ year}^{-1}$, adjusted HRs were 1.37 (95% CI 1.20, 1.56) for the primary outcome, 6.14 (3.60, 10.49) for major renal events, 1.25 (1.06, 1.48) for major macrovascular events and 1.54 (1.31, 1.81) for all-cause mortality (ESM Table 3). There was also a significant linear association between estimated eGFR slope and the risk of the primary outcome (p for linear trend < 0.001 ; p for quadratic effect 0.18) (ESM Table 3).

Subgroup and sensitivity analysis Overall trends remained unchanged across participant groups defined by sex, region of residence, eGFR and UACR at registration and randomised

treatment allocation (BP- and glucose-lowering treatment) (ESM Fig. 3). In sensitivity analyses, the associations were similar when using four measurements of eGFR over the 32-month eGFR slope ascertainment period, but flatter when using two measurements of eGFR over the 8-month eGFR slope ascertainment period, compared with the primary analysis using three measurements over the 20-month eGFR slope ascertainment period (ESM Fig. 4).

Similar associations were observed when assessing percentage change in eGFR (ESM Fig. 5). Compared with the model including percentage change in eGFR in addition to covariates, replacing percentage change in eGFR with eGFR slope did not significantly change the discrimination for predicting clinical outcomes (ESM Table 4).

Discussion

In a post hoc analysis of 8,879 participants from a large RCT, we observed a strong association between annual change in kidney function and the future risk of major clinical outcomes in type 2 diabetes. We found that an annual substantial

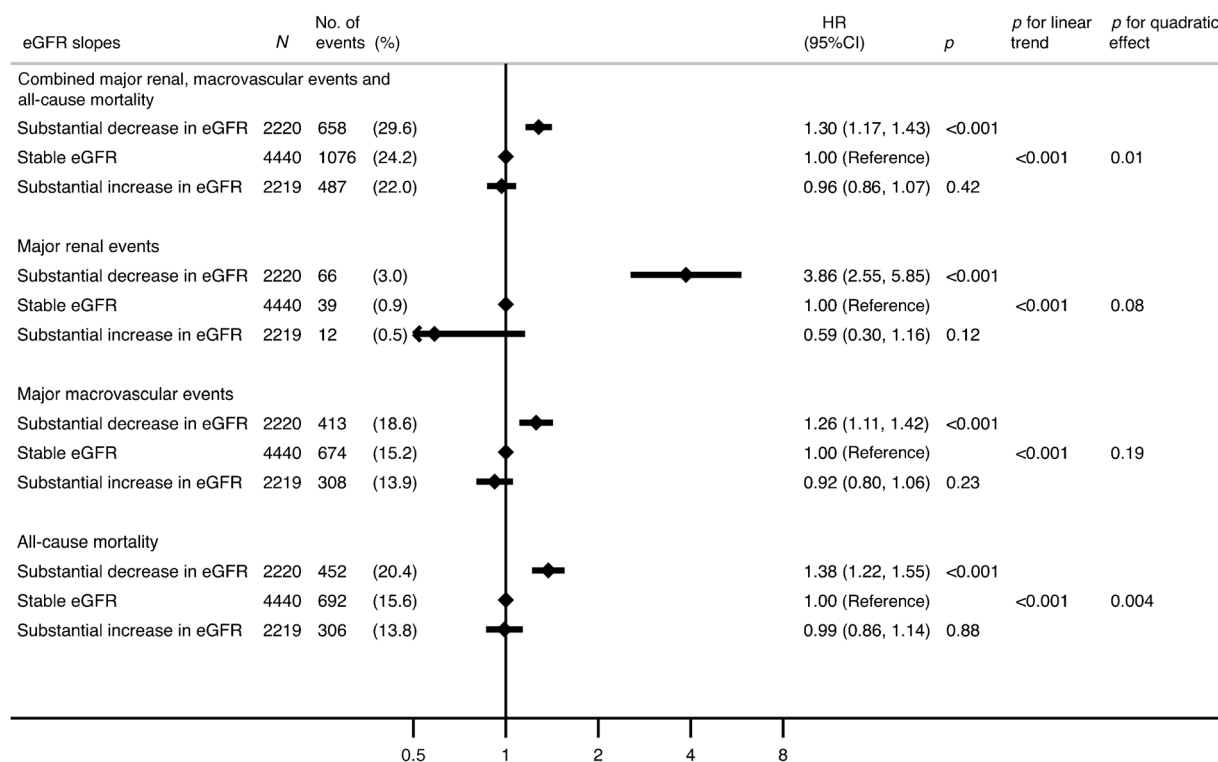


Fig. 2 Adjusted HRs for study outcomes according to categories of eGFR slope over the 20-month eGFR slope ascertainment period. Covariates: registration values of age, sex, region of residence, duration of diabetes, log-transformed UACR, systolic BP, diastolic BP, a history of

macrovascular disease, smoking, drinking, treated hypertension, HbA_{1c}, HDL-cholesterol, LDL-cholesterol, log-transformed triacylglycerol and BMI, 4-month eGFR and randomised treatment allocation (BP and glucose treatment)

decrease in eGFR over 20 months exhibited a statistically significant association with increased risks of major renal events, major macrovascular events and all-cause mortality, independent of baseline kidney function, albuminuria and other covariates, consistently observed across various patient subgroups of covariates. Although an annual substantial increase in eGFR did not significantly predict the risk of these outcomes, our results from multiple analyses supported the utility of eGFR slopes for predicting the subsequent vascular outcomes and all-cause death in type 2 diabetes.

A limited number of studies have shown the relationship between eGFR slopes and the subsequent risk of ESKD [10, 21], cardiovascular disease [11, 22] and all-cause mortality [12–14]. Results from a meta-analysis of 13 CKD cohorts showed that an eGFR slope of -3 vs 0 ml min⁻¹ (1.73 m)⁻² year⁻¹ over 3 years was associated with the risk of ESKD (HR 1.73 [95% CI 1.50, 2.00]) after adjusting for last measurement of eGFR [10]. In a cohort of 529,312 adults in the Alberta Kidney Disease Network, an eGFR slope of -4 ml min⁻¹ (1.73 m)⁻² year⁻¹ was associated with 74%, 16% and 21% higher risks of congestive heart failure, acute myocardial infarction and stroke, respectively, compared with no change in eGFR [11]. In a cohort of French individuals with type 2 diabetes, annual eGFR decline over 6.3 years of follow-up was greater in individuals with major cardiovascular events compared with those without (-3.0 vs

-1.7 ml min⁻¹ [1.73 m]⁻² year⁻¹) [22]. Furthermore, a meta-analysis of 12 CKD cohorts within the CKD Prognosis Consortium showed that an eGFR slope of -6 vs 0 ml min⁻¹ (1.73 m)⁻² year⁻¹ over 3 years was associated with an adjusted HR for all-cause mortality of 1.25 (95% CI 1.09, 1.44) after adjusting for last measurement of eGFR [14]. However, these results were mostly based on general or CKD populations. Therefore, the current study was notable for evaluating the composite outcome of major renal and macrovascular events and all-cause mortality in a large population with type 2 diabetes after adjusting for important risk factors of kidney disease progression.

Various mechanisms have been suggested to explain why declining kidney function is associated with increased risk of cardiovascular disease and all-cause mortality as well as renal outcome. Decrease in eGFR may exacerbate cardiovascular risk factors such as BP and lipids [23]. Other possible factors which were not measured in our cohort include activation of the RAAS, endothelial dysfunction, inflammation and oxidative stress [24, 25]. On the other hand, these risk factors and progression of cardiovascular disease certainly accelerate the progression of CKD [26]. In addition, worsening kidney function may cause decreased appetite, decreased physical function and overall frailty, and indirectly result in higher mortality risk [14].

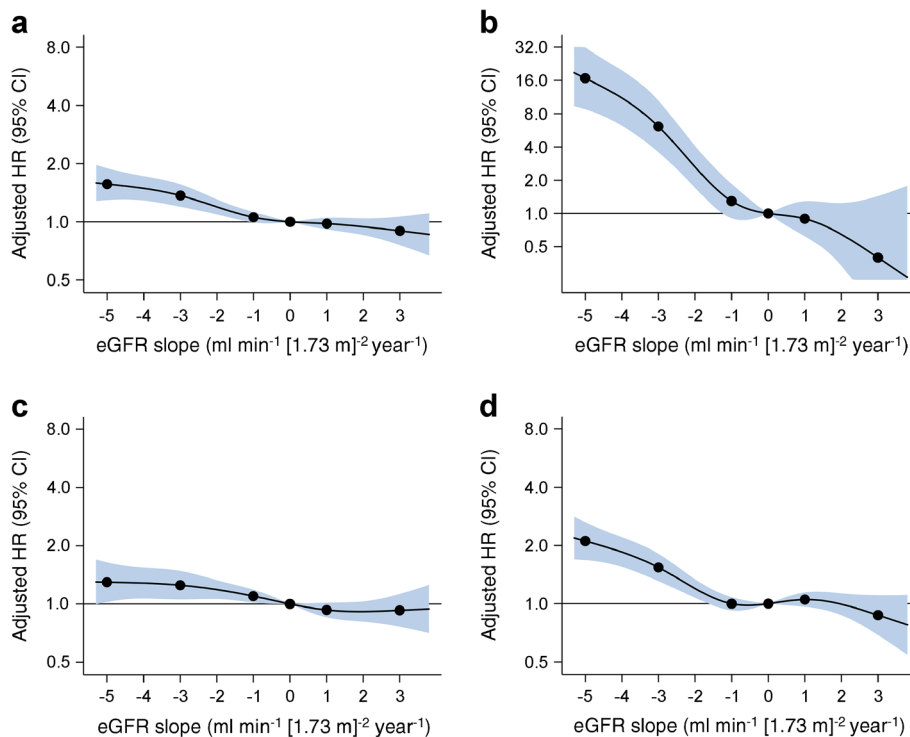


Fig. 3 Spline curves showing adjusted HRs and 95% CIs (shaded) for (a) combined major renal events, macrovascular events and all-cause mortality (primary outcome), (b) major renal events, (c) major macrovascular events and (d) all-cause mortality, associated with eGFR slopes over the 20-month eGFR slope ascertainment period. Values were trimmed at a slope of <-5.4 and >3.8 $\text{ml min}^{-1} (1.73 \text{ m})^{-2} \text{ year}^{-1}$ (each included 1.0% of participants). Knots were placed at -5 , -3 , -1 , 1 and 3 $\text{ml min}^{-1} (1.73 \text{ m})^{-2} \text{ year}^{-1}$

There has been increasing interest in the utility of eGFR slope as a surrogate endpoint for predicting subsequent ESKD in clinical trials, but a clear definition of the magnitude of eGFR slope as a surrogate endpoint has not been established. The 2012 Kidney Disease: Improving Global Outcomes (KDIGO) guideline defined rapid eGFR decline as a sustained decline in eGFR of greater than -5 $\text{ml min}^{-1} (1.73 \text{ m})^{-2} \text{ year}^{-1}$ [27], which was supported by other studies [10, 21]. A number of studies already used eGFR slope greater than -5 $\text{ml min}^{-1} (1.73 \text{ m})^{-2} \text{ year}^{-1}$ as a substitute for kidney outcome, which suggested the potential of eGFR slope of -5 $\text{ml min}^{-1} (1.73 \text{ m})^{-2} \text{ year}^{-1}$ as a surrogate endpoint. However, in the present study (approximately 80% had early-stage diabetic kidney disease at baseline with $\text{eGFR} \geq 60$ $\text{ml min}^{-1} [1.73 \text{ m}]^{-2}$ and $\text{UACR} < 300$ $\mu\text{g}/\text{mg}$), only 1.4% of participants developed eGFR decline greater than -5 $\text{ml min}^{-1} (1.73 \text{ m})^{-2} \text{ year}^{-1}$. Instead, more than fivefold participants developed eGFR slopes of -3 vs -5 $\text{ml min}^{-1} (1.73 \text{ m})^{-2} \text{ year}^{-1}$ and their risks of major renal events were weaker but still robustly increased. Therefore, the potential of using eGFR slopes less than -5 $\text{ml min}^{-1} (1.73 \text{ m})^{-2} \text{ year}^{-1}$ may be a future subject to be assessed for seeking more practical surrogate endpoints in people with type 2 diabetes.

year⁻¹, using 0 $\text{ml min}^{-1} (1.73 \text{ m})^{-2} \text{ year}^{-1}$ as the reference point. Covariates: registration values of age, sex, region of residence, duration of diabetes, log-transformed UACR, systolic BP, diastolic BP, a history of macrovascular disease, smoking, drinking, treated hypertension, HbA_{1c} , HDL-cholesterol, LDL-cholesterol, log-transformed triacylglycerol and BMI, 4-month eGFR and randomised treatment allocation (BP and glucose treatment)

The standard duration for estimating eGFR slopes is also unknown. We excluded the first 4 months after randomisation from the eGFR slope ascertainment period, in order to remove an acute pharmacological effect of ACEi on eGFR. RAAS blockers, including ACEis and ARBs, are largely known to prevent the onset and progression of diabetic kidney disease and improve survival rate in people with diabetes [28–30]. During the initiation of RAAS blockers, there may be an acute fall in eGFR [19, 31], because RAAS blockers inhibit angiotensin 2-mediated renal vasoconstriction which in turn causes a reduction in intraglomerular pressure and filtration fraction. Thus, in people starting RAAS blockers, changes in eGFR over time should be evaluated separately during the initial months when an acute fall in eGFR is observed, and during subsequent periods until the end of follow-up.

Currently, both 30% and 40% declines in eGFR are widely accepted as surrogate endpoints for CKD progression, based on a series of meta-analyses and simulations [8, 9]. In this study, similar associations were observed when using percentage change in eGFR and eGFR slope, and the discrimination statistics in the model including eGFR slope were similar to those using percentage change in eGFR for predicting major clinical outcomes. This may be consistent with a previous

report [32]. The eGFR slope can potentially reflect the course of changes in kidney function more accurately than percentage change in eGFR, because the slope takes into account all of the available eGFR measurements of an individual over time. Our study indicated that evaluating eGFR slope in an individual might be a promising alternative to percentage change in eGFR for predicting the progression of diabetic kidney disease.

Recently, a number of clinical trials have assessed the effects of sodium glucose cotransporter 2 inhibitors in people with type 2 diabetes. Among the trials with similar baseline renal characteristics to our cohort, the Canagliflozin Cardiovascular Assessment Study (CANVAS) Program (mean eGFR $77 \text{ ml min}^{-1} [1.73 \text{ m}]^{-2}$ [SD 21]) reported that participants allocated to the placebo group had a mean annual long-term decline in eGFR of $-0.9 \text{ ml min}^{-1} (1.73 \text{ m})^{-2} \text{ year}^{-1}$ [33]. The Empagliflozin Cardiovascular Outcome Event Trial in Type 2 Diabetes Mellitus Patients—Removing Excess Glucose (EMPA-REG OUTCOME) trial (mean eGFR $74 \text{ ml min}^{-1} [1.73 \text{ m}]^{-2}$ [22]) observed a mean annual change in eGFR of $-1.46 \text{ ml min}^{-1} (1.73 \text{ m})^{-2} \text{ year}^{-1}$ in the placebo group [34]. Our cohort included a lower-risk population showing slower decline in eGFR compared with these trials.

The strengths of our study include the large number and diverse groups of participants, the long duration of follow-up, the sequential measurements of eGFR during the ADVANCE trial and the ability to adjust for multiple important risk factors. Also, we used linear mixed models, which are more robust than ordinary linear regression models, to estimate eGFR slopes and assess changes over time in participants with varying intervals between measurements [35]. However, our study has several limitations. First, as our study cohort was derived from a randomised trial, the results may limit generalisability to broader populations. Second, only 84% of the participants alive at the end of the ADVANCE trial were enrolled in the post-trial follow-up (ADVANCE-ON trial). However, baseline characteristics of those included in the ADVANCE-ON trial were similar to those of the entire trial population [18]. Third, we used eGFR instead of a directly measured GFR to calculate GFR slopes, which may lead to some misclassification of true course of change in kidney function [36, 37]. Finally, our models to estimate eGFR slopes did not consider non-linear and time-varying patterns of eGFR decline. However, a previous study showed that slopes were linear for 83% of individuals with diabetes and normal kidney function [38]. Also, estimating eGFR slope may be subject to measurement error including regression to the mean [39].

In conclusion, an annual substantial decrease in eGFR over 20 months was strongly associated with the future risk of renal and cardiovascular events and all-cause mortality in type 2

diabetes, supporting the potential for using eGFR slope as a predictor for major clinical outcomes. The present analysis suggests that monitoring eGFR over time is beneficial to identifying individuals with diabetes at high risk of vascular outcomes and all-cause death, requiring close monitoring for early initiation of appropriate preventive and therapeutic strategies.

Data availability The datasets generated and/or analysed during the current study are available from the corresponding author on reasonable request.

Funding The ADVANCE trial was funded by grants from the National Health and Medical Research Council (NHMRC) of Australia and Servier. MO, TT and TW are supported by the Japan Society for the Promotion of Science Program for Fostering Globally Talented Researchers. MO is supported by the Japanese Society of Women Nephrologists. TO is supported by the John Chalmers Clinical Research Fellowship of the George Institute. MJ is supported by a Scientia Fellowship from University of New South Wales, Sydney. JC received research grants from the NHMRC of Australia for the ADVANCE trial and ADVANCE-ON post-trial follow-up. MW is an NHMRC of Australia Principal Research Fellow (1080206).

Duality of interest MO, TO, TT and TW report no conflicts of interest. MJ reports receiving grant support from the NHMRC of Australia (Project Grant: 1148060) and unrestricted grant support from VentureWise (a wholly owned commercial subsidiary of NPS MedicineWise) to conduct a commissioned project funded by AstraZeneca. MEC received consulting fees from Merck, GlaxoSmithKline, Amgen and AstraZeneca, and lecture fees from Servier. SaH reports personal fees and non-financial support from AstraZeneca, Bristol-Myers Squibb, Janssen, MSD and Sanofi, and personal fees from Abbott, Boehringer Ingelheim, Eli Lilly and Company, Novartis, Novo Nordisk, Servier and Takeda. PH received consulting fees from Servier. StH reports lecture fees from Servier, Takeda and Novartis. GM reports personal fees from Servier, Bayer, Boehringer Ingelheim, Daiichi Sankyo, Medtronic, Novartis, Menarini Group, Recordati and Takeda Pharmaceutical Company. MM received personal fees from Novo Nordisk, Sanofi, Eli Lilly and Company, Merck Sharp & Dohme, Abbott, Novartis, Servier and AstraZeneca, and grant support from Novo Nordisk, Sanofi, Eli Lilly and Company, Merck Sharp & Dohme and Novartis. BW received lecture fees from Servier, Novartis, Daiichi Sankyo, Pfizer and Boehringer Ingelheim, and serves on trial steering committees for Novartis, Relypsa and Vascular Dynamics. JC received research grants from the NHMRC of Australia and from Servier for the ADVANCE trial and ADVANCE-ON post-trial follow-up, and honoraria for speaking about these studies at scientific meetings. MW reports consultancy fees from Amgen and Kirin and grant support from the NHMRC. VP reports honoraria for scientific lectures from Boehringer Ingelheim, Merck, AbbVie, Roche, AstraZeneca and Servier, and serves on steering committees and advisory boards supported by AbbVie, Astellas, Baxter, Boehringer Ingelheim, Bristol-Myers Squibb, GlaxoSmithKline, Janssen and Pfizer.

Contribution statement MO, MJ, TO, TT, JC, MW and VP contributed to the concept and rationale for this study. MO conducted statistical analysis with advice from MJ, TO, TT, VP, JC and MW. All authors were involved in data interpretation. MO, MJ, TO, TT, JC, MW and VP contributed to discussion. MO and MJ drafted the manuscript. All authors reviewed and edited the manuscript and approved the final submitted version. JC, MW and VP are the guarantors of this work and, as such, had full access to all of the data in the study and take responsibility for the integrity of the data and the accuracy of the data analysis.

Open Access This article is distributed under the terms of the Creative Commons Attribution 4.0 International License (<http://creativecommons.org/licenses/by/4.0/>), which permits unrestricted use, distribution, and reproduction in any medium, provided you give appropriate credit to the original author(s) and the source, provide a link to the Creative Commons license, and indicate if changes were made.

References

1. Australian Institute of Health and Welfare (2018) Deaths from diabetes. Available from <https://www.aihw.gov.au/reports/diabetes/diabetes-snapshot/contents/deaths-from-diabetes>. Accessed 15 Oct 2018
2. Tuttle KR, Bakris GL, Bilous RW et al (2014) Diabetic kidney disease: a report from an ADA Consensus Conference. *Diabetes Care* 37(10):2864–2883. <https://doi.org/10.2337/dc14-1296>
3. The United States Renal Data System (2017) 2017 USRDS annual data report: Epidemiology of kidney disease in the United States. National Institutes of Health, National Institute of Diabetes and Digestive and Kidney Diseases, Bethesda, MD
4. Ninomiya T, Perkovic V, de Galan BE et al (2009) Albuminuria and kidney function independently predict cardiovascular and renal outcomes in diabetes. *J Am Soc Nephrol* 20(8):1813–1821. <https://doi.org/10.1681/ASN.2008121270>
5. Hobeika L, Hunt KJ, Neely BA, Arthur JM (2015) Comparison of the rate of renal function decline in nonproteinuric patients with and without diabetes. *Am J Med Sci* 350(6):447–452. <https://doi.org/10.1097/MAJ.0000000000000583>
6. Zoppini G, Targher G, Chonchol M et al (2012) Predictors of estimated GFR decline in patients with type 2 diabetes and preserved kidney function. *Clin J Am Soc Nephrol* 7(3):401–408. <https://doi.org/10.2215/CJN.07650711>
7. Warren B, Rebholz CM, Sang Y et al (2018) Diabetes and trajectories of estimated glomerular filtration rate: a prospective cohort analysis of the Atherosclerosis Risk in Communities study. *Diabetes Care* 41(8):1646–1653. <https://doi.org/10.2337/dc18-0277>
8. Coresh J, Turin TC, Matsushita K et al (2014) Decline in estimated glomerular filtration rate and subsequent risk of end-stage renal disease and mortality. *JAMA* 311(24):2518–2531. <https://doi.org/10.1001/jama.2014.6634>
9. Lambers Heerspink HJ, Tighiouart H, Sang Y et al (2014) GFR decline and subsequent risk of established kidney outcomes: a meta-analysis of 37 randomized controlled trials. *Am J Kidney Dis* 64(6):860–866. <https://doi.org/10.1053/j.ajkd.2014.08.018>
10. Kovesdy CP, Coresh J, Ballew SH et al (2016) Past decline versus current eGFR and subsequent ESRD risk. *J Am Soc Nephrol* 27(8):2447–2455. <https://doi.org/10.1681/ASN.2015060687>
11. Turin TC, Jun M, James MT et al (2016) Magnitude of rate of change in kidney function and future risk of cardiovascular events. *Int J Cardiol* 202:657–665. <https://doi.org/10.1016/j.ijcard.2015.09.090>
12. Turin TC, Coresh J, Tonelli M et al (2013) Change in the estimated glomerular filtration rate over time and risk of all-cause mortality. *Kidney Int* 83(4):684–691. <https://doi.org/10.1038/ki.2012.443>
13. Al-Aly Z, Zeringue A, Fu J et al (2010) Rate of kidney function decline associates with mortality. *J Am Soc Nephrol* 21(11):1961–1969. <https://doi.org/10.1681/ASN.2009121210>
14. Naimark DM, Grams ME, Matsushita K et al (2016) Past decline versus current eGFR and subsequent mortality risk. *J Am Soc Nephrol* 27(8):2456–2466. <https://doi.org/10.1681/ASN.2015060688>
15. ADVANCE Management Committee (2001) Study rationale and design of ADVANCE: Action in Diabetes and Vascular disease – Preterax and Diamicon MR Controlled Evaluation. *Diabetologia* 44:1118–1120
16. Patel A, MacMahon S, Chalmers J et al (2007) Effects of a fixed combination of perindopril and indapamide on macrovascular and microvascular outcomes in patients with type 2 diabetes mellitus (the ADVANCE trial): a randomised controlled trial. *Lancet* 370(9590):829–840. [https://doi.org/10.1016/S0140-6736\(07\)61303-8](https://doi.org/10.1016/S0140-6736(07)61303-8)
17. Patel A, MacMahon S, Chalmers J et al (2008) Intensive blood glucose control and vascular outcomes in patients with type 2 diabetes. *N Engl J Med* 358:2560–2572
18. Zoungas S, Chalmers J, Neal B et al (2014) Follow-up of blood-pressure lowering and glucose control in type 2 diabetes. *N Engl J Med* 371(15):1392–1406. <https://doi.org/10.1056/NEJMoa1407963>
19. Holtkamp FA, de Zeeuw D, Thomas MC et al (2011) An acute fall in estimated glomerular filtration rate during treatment with losartan predicts a slower decrease in long-term renal function. *Kidney Int* 80(3):282–287. <https://doi.org/10.1038/ki.2011.79>
20. Levey AS, Stevens LA, Schmid CH et al (2009) A new equation to estimate glomerular filtration rate. *Ann Intern Med* 150(9):604–612. <https://doi.org/10.7326/0003-4819-150-9-200905050-00006>
21. KDIGO CKD Work Group (2013) KDIGO 2012 clinical practice guideline for the evaluation and management of chronic kidney disease. *Kidney Int Suppl* 3:1–150
22. Ragot S, Saulnier PJ, Velho G et al (2016) Dynamic changes in renal function are associated with major cardiovascular events in patients with type 2 diabetes. *Diabetes Care* 39(7):1259–1266. <https://doi.org/10.2337/dc15-2607>
23. Matsushita K, Selvin E, Bash LD, Franceschini N, Astor BC, Coresh J (2009) Change in estimated GFR associates with coronary heart disease and mortality. *J Am Soc Nephrol* 20(12):2617–2624. <https://doi.org/10.1681/ASN.2009010025>
24. Schiffrin EL, Lipman ML, Mann JF (2007) Chronic kidney disease: effects on the cardiovascular system. *Circulation* 116(1):85–97. <https://doi.org/10.1161/CIRCULATIONAHA.106.678342>
25. Navarro-Gonzalez JF, Mora-Fernandez C, Muros de Fuentes M, Garcia-Perez J (2011) Inflammatory molecules and pathways in the pathogenesis of diabetic nephropathy. *Nat Rev Nephrol* 7(6):327–340. <https://doi.org/10.1038/nrneph.2011.51>
26. Whelton PK, Carey RM, Aronow WS et al (2018) 2017 ACC/AHA/AAPA/ABC/ACPM/AGS/APhA/ASH/ASPC/NMA/PCNA guideline for the prevention, detection, evaluation, and management of high blood pressure in adults: executive summary: a report of the American College of Cardiology/American Heart Association Task Force on Clinical Practice Guidelines. *Circulation* 138(17):e426–e483. <https://doi.org/10.1161/CIR.0000000000000597>
27. Levin A, Stevens PE (2014) Summary of KDIGO 2012 CKD Guideline: behind the scenes, need for guidance, and a framework for moving forward. *Kidney Int* 85(1):49–61. <https://doi.org/10.1038/ki.2013.444>
28. Brenner BM, Cooper ME, de Zeeuw D et al (2001) Effects of losartan on renal and cardiovascular outcomes in patients with type 2 diabetes and nephropathy. *N Engl J Med* 345(12):861–869. <https://doi.org/10.1056/NEJMoa011161>
29. Lewis EJ, Hunsicker LG, Clarke WR et al (2001) Renoprotective effect of the angiotensin-receptor antagonist irbesartan in patients with nephropathy due to type 2 diabetes. *N Engl J Med* 345(12):851–860. <https://doi.org/10.1056/NEJMoa011303>
30. Parving HH, Lehnert H, Brochner-Mortensen J et al (2001) The effect of irbesartan on the development of diabetic nephropathy in patients with type 2 diabetes. *N Engl J Med* 345(12):870–878. <https://doi.org/10.1056/NEJMoa011489>
31. Ohkuma T, Jun M, Rodgers A et al (2019) Acute increases in serum creatinine after starting angiotensin-converting enzyme inhibitor

- based therapy and effects of its continuation on major clinical outcomes in type 2 diabetes mellitus. *Hypertension* 73(1):84–91. <https://doi.org/10.1161/HYPERTENSIONAHA.118.12060>
32. Tsai CW, Huang HC, Chiang HY et al (2018) First-year estimated glomerular filtration rate variability after pre-end-stage renal disease program enrollment and adverse outcomes of chronic kidney disease. *Nephrol Dial Transplant*. <https://doi.org/10.1093/ndt/gfy200>
 33. Perkovic V, de Zeeuw D, Mahaffey KW et al (2018) Canagliflozin and renal outcomes in type 2 diabetes: results from the CANVAS Program randomised clinical trials. *Lancet Diabetes Endocrinol* 6(9):691–704. [https://doi.org/10.1016/S2213-8587\(18\)30141-4](https://doi.org/10.1016/S2213-8587(18)30141-4)
 34. Wanner C, Heerspink HJL, Zinman B et al (2018) Empagliflozin and kidney function decline in patients with type 2 diabetes: a slope analysis from the EMPA-REG OUTCOME trial. *J Am Soc Nephrol* 29:2755–2769
 35. Leffondre K, Boucquemont J, Tripepi G, Stel VS, Heinze G, Dunkler D (2015) Analysis of risk factors associated with renal function trajectory over time: a comparison of different statistical approaches. *Nephrol Dial Transplant* 30(8):1237–1243. <https://doi.org/10.1093/ndt/gfu320>
 36. van Rijn MHC, Metzger M, Flamant M et al (2018) Performance of creatinine-based equations for estimating glomerular filtration rate changes over time. *Nephrol Dial Transplant*. <https://doi.org/10.1093/ndt/gfy278>
 37. Gaspari F, Ruggenenti P, Porrini E et al (2013) The GFR and GFR decline cannot be accurately estimated in type 2 diabetics. *Kidney Int* 84(1):164–173. <https://doi.org/10.1038/ki.2013.47>
 38. Skupien J, Warram JH, Smiles AM et al (2012) The early decline in renal function in patients with type 1 diabetes and proteinuria predicts the risk of end-stage renal disease. *Kidney Int* 82(5):589–597. <https://doi.org/10.1038/ki.2012.189>
 39. MacMahon S, Peto R, Cutler J et al (1990) Blood pressure, stroke, and coronary heart disease. Part 1, Prolonged differences in blood pressure: prospective observational studies corrected for the regression dilution bias. *Lancet* 335(8692):765–774. [https://doi.org/10.1016/0140-6736\(90\)90878-9](https://doi.org/10.1016/0140-6736(90)90878-9)

Publisher's note Springer Nature remains neutral with regard to jurisdictional claims in published maps and institutional affiliations.