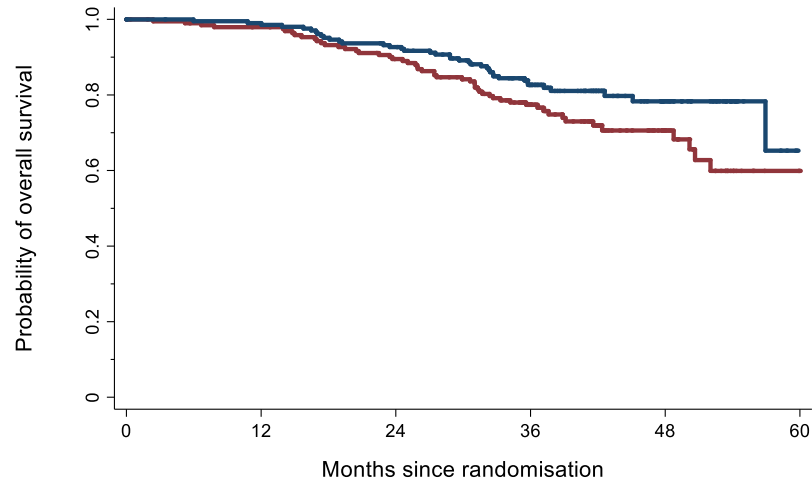
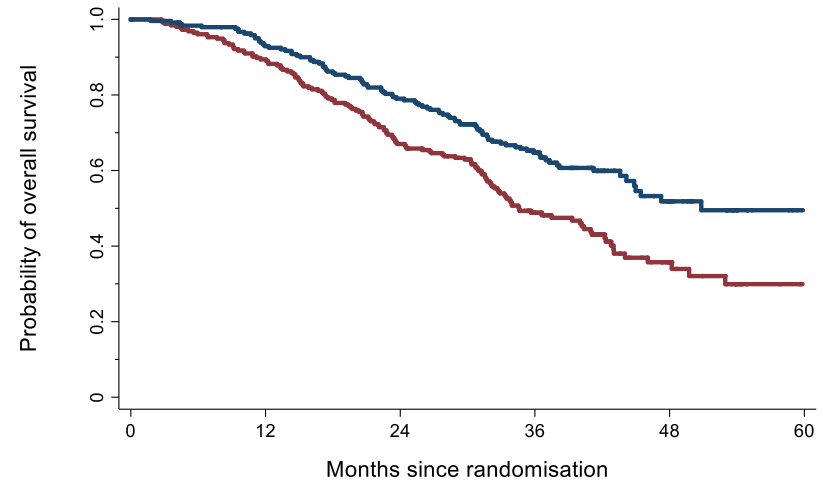


(A) OS in CHARTED low volume patients



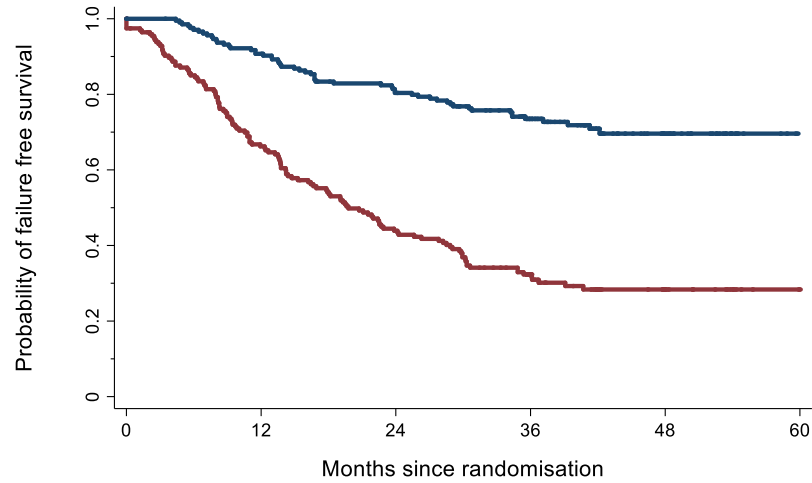
No. of patients (Events)		0	12	24	36	48	60
AAP	206 (2)	203 (13)	189 (19)	127 (4)	42 (1)	1	
ADT alone	196 (4)	188 (16)	168 (22)	110 (7)	34 (4)	2	

(B) OS in CHARTED high volume patients



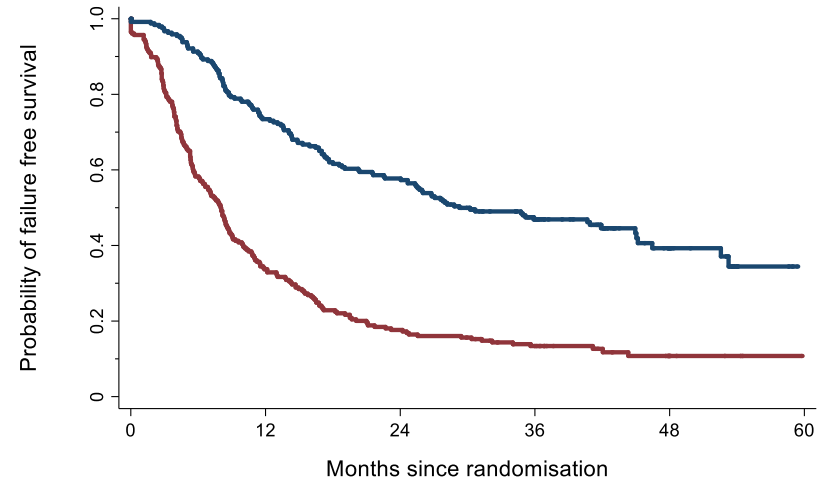
No. of patients (Events)		0	12	24	36	48	60
AAP	243 (17)	222 (33)	187 (32)	110 (13)	31 (1)	2	
ADT alone	256 (27)	226 (56)	166 (41)	86 (15)	22 (3)	1	

(C) FFS in CHARTED low volume patients



No. of patients (Events)		0	12	24	36	48	60
AAP	206 (19)	186 (21)	161 (13)	110 (4)	34 (0)	1	
ADT alone	196 (65)	126 (42)	82 (21)	48 (5)	16 (0)	1	

(D) FFS in CHARTED high volume patients



No. of patients (Events)		0	12	24	36	48	60
AAP	243 (64)	175 (37)	134 (24)	78 (7)	23 (2)	2	
ADT alone	256 (168)	85 (40)	44 (10)	26 (3)	6 (0)	0	

— AAP — ADT alone