

Supplementary figures

Supplementary Table 1: Baseline participant characteristics

	(n=28)
Age at final SYCAMORE visit (years)	10.25 (4.49)
(SD) ^α	
<hr/>	
Diagnosis (Type of JIA) n (%)	
Extended Oligoarticular	5 (18)
Oligoarticular	20 (71)
Polyarticular	3 (11)
<hr/>	
Mean Age of onset of JIA (years) (SD) ^{α,β}	3.92 (3.16)
<hr/>	
Age of onset of uveitis (years) (SD) ^{α,β}	5.20 (2.81)
<hr/>	
Ethnic group n (%)	
White British	23 (82)
Mixed – White and Black African	1 (4)
Asian – Indian or British Indian	2 (7)
Any other white background	1 (4)
Any other ethnic group	1 (4)
<hr/>	
Sex n (%)	

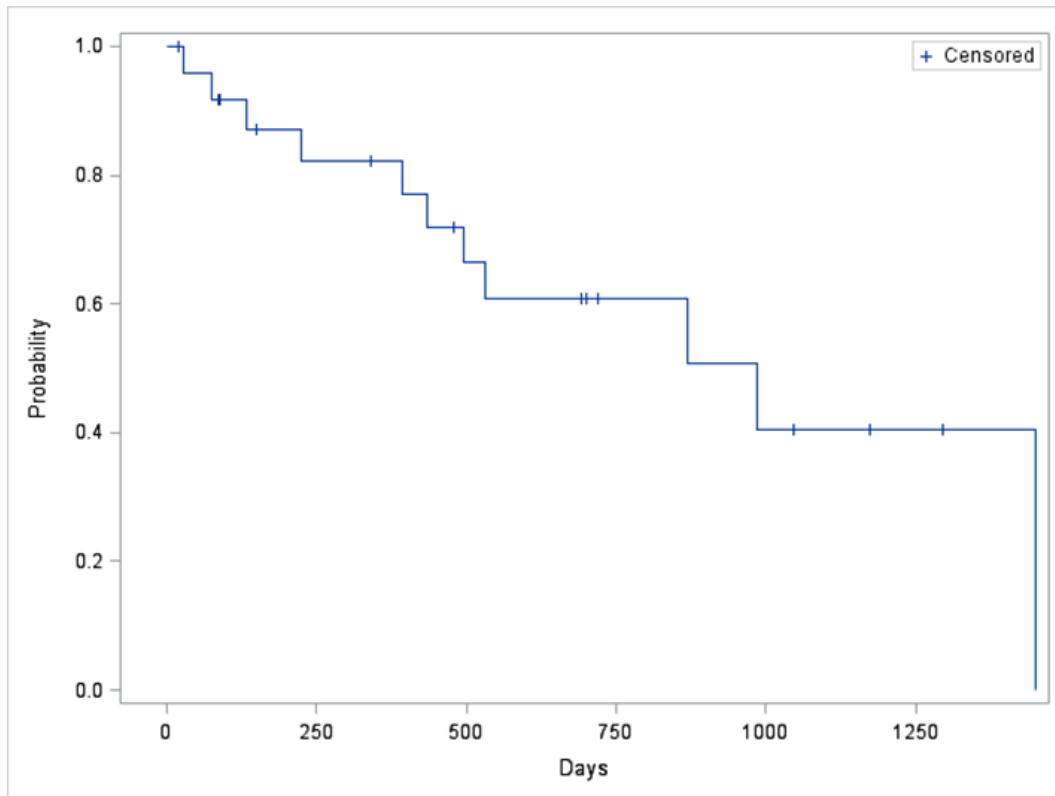
Male 8 (29)

Female 20 (72)

SD=Standard deviation α = Mean (SD), β

= 3 missing values

Supplementary Figure 1: Kaplan Meier plot showing survival to flare in days after starting adalimumab during the trial follow-up period. Eleven of the 25 patients who started adalimumab after the SYCAMORE investigational medicinal product (IMP) was stopped flared and were included.



Supplementary Figure 2: Adverse events.

Event	Systemic medication at time of event			
	MTX + ada	Ad a	MT X	MTX + other
Gastrointestinal disorder				
Abdominal pain	1			
Diarrhoea				1
Infection or infestation				
Lower respiratory tract				
infection	2			
Nasopharyngitis				
Viral infection	8			
Tonsillitis		1	1	1
Urinary tract infection			4	
Varicella infection			1	
Cellulitis	1			
Eczema-related skin				
infection	1			
Leg abscess	1			
Tooth infection				1
Conjunctivitis	1			
Skin or subcutaneous tissue disorder				
Eczema	1	1		
Respiratory, thoracic or mediastinal				

disorder

Asthma 1

Epistaxis 1

Nervous system disorder:

seizures 1

*MTX = methotrexate, ada = adalimumab, other =

other systemic therapy