
Genome analysis

eFORGE v2.0: updated analysis of cell type-specific signal in epigenomic data

Charles E Breeze^{1,2,*†}, Alex P Reynolds^{2†}, Jenny van Dongen³, Ian Dunham⁴, John Lazar², Shane Neph², Jeff Vierstra², Guillaume Bourque⁵, Andrew E Teschendorff^{6,7}, John A Stamatoyannopoulos² and Stephan Beck¹

¹Medical Genomics Group, Paul O’Gorman Building, UCL Cancer Institute, University College London, 72 Huntley Street, London WC1E 6BT, United Kingdom. ²Altius Institute for Biomedical Sciences, 2211 Elliott Avenue 98121 Seattle ³Department of Biological Psychology, Vrije Universiteit Amsterdam, 1081BT, Amsterdam, The Netherlands ⁴European Molecular Biology Laboratory, European Bioinformatics Institute (EMBL-EBI), Wellcome Genome Campus, Hinxton, Cambridge, CB10 1SD, UK ⁵Department of Human Genetics, McGill University, Montréal, Québec, Canada, McGill University and Génome Québec Innovation Center, Montréal, Québec, H3A 0G1, Canada. ⁶CAS Key Lab of Computational Biology, CAS-MPG Partner Institute for Computational Biology, Shanghai Institute for Biological Sciences, Chinese Academy of Sciences, 320 Yue Yang Road, Shanghai 200031, China. ⁷Statistical Genomics Group, UCL Cancer Institute, University College London, 72 Huntley Street, London WC1E 6BT, United Kingdom.

*To whom correspondence should be addressed.

† These authors contributed equally to this work.

Associate Editor: XXXXXXXX

Received on XXXXX; revised on XXXXX; accepted on XXXXX

Abstract

Summary: The Illumina Infinium EPIC BeadChip is a new high-throughput array for DNA methylation analysis, extending the earlier 450k array by over 400,000 new sites. Previously, a method named eFORGE was developed to provide insights into cell type-specific and cell composition effects for 450k data. Here, we present a significantly updated and improved version of eFORGE that can analyse both EPIC and 450k array data. New features include analysis of chromatin states, TF motifs and DNase I footprints, providing tools for EWAS interpretation and epigenome editing.

Availability: eFORGE v2.0 is implemented as a web tool available from <https://eforge.altiusinstitute.org> and <https://eforge-tf.altiusinstitute.org/>.

Contact: c.breeze@ucl.ac.uk

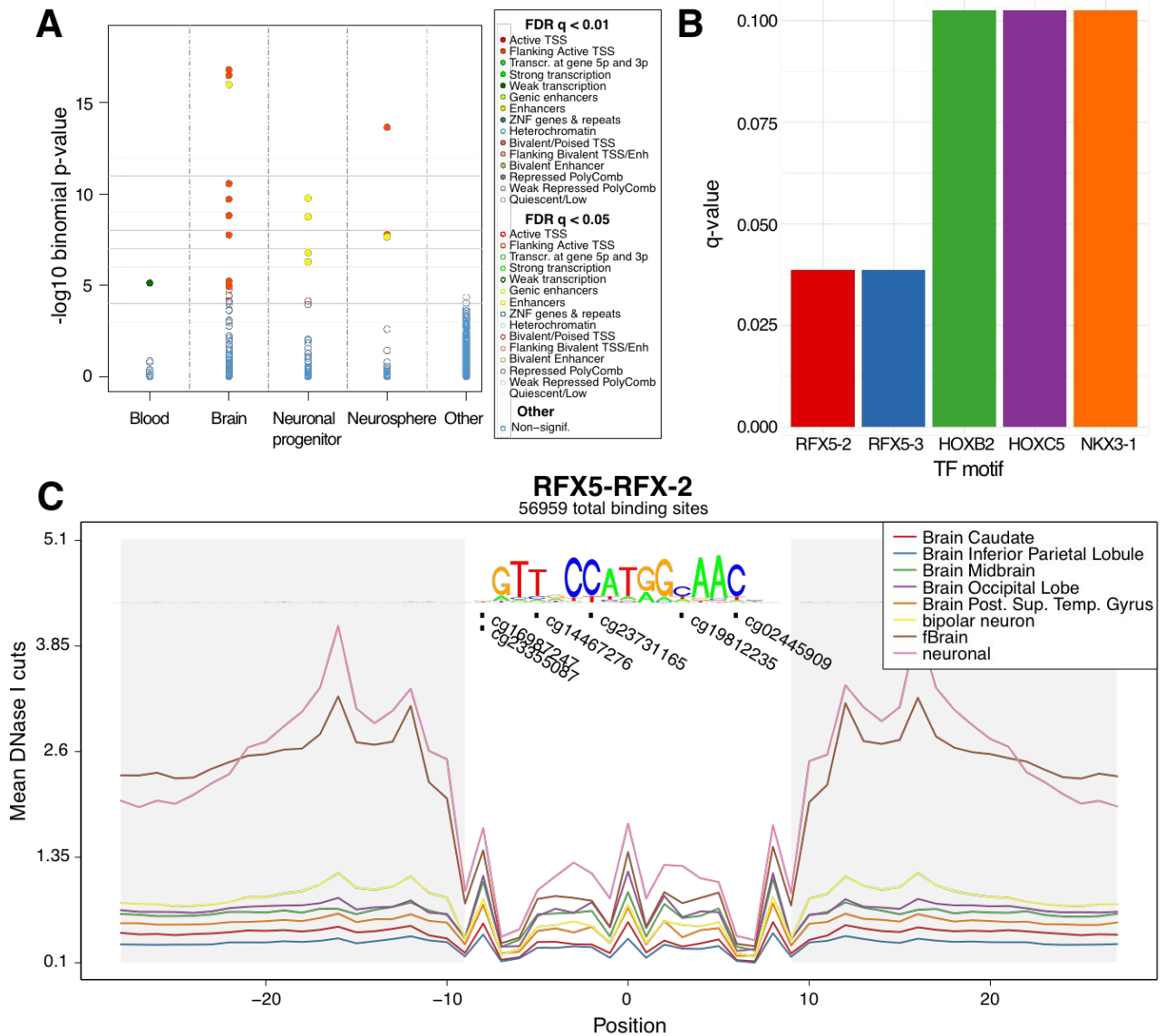
Supplementary information: Supplementary data are available at *Bioinformatics* online.

1 Introduction

DNA methylation (DNAm) is the main epigenetic mark assayed in the study of human diseases. The new EPIC BeadChip developed by Illumina can detect DNAm at over 850,000 genomic sites, extending the promoter-centric coverage of the 450k array to enhancers identified by the ENCODE and FANTOM5 projects (ENCODE Project Consortium, 2012)

(Andersson et al., 2014), constituting a powerful and robust new tool for epigenome-wide association studies (Moran et al., 2016).

The original version of eFORGE (Breeze et al., 2016) employs multiple layers of epigenetic information, including data for open chromatin sites (DNase I hotspots) and histone marks (H3K4me1, H3K4me3, H3K27me3, H3K9me3 and H3K36me3) to detect cell types driving EWAS signal.



The updated version of eFORGE extends and enhances the tool, adding new features such as simultaneous analysis across 15 chromatin states, detection of TF motifs associated with EWAS signal, cumulative DNase I footprint analysis, EPIC array support, and a browser to analyse TF occupancy in EWAS loci. Notably, we incorporate many of these features into a new web-based suite, eFORGE-TF, to aid the multilevel characterisation of TF-associated EWAS mechanisms.

2 Description

eFORGE v2.0 is a software tool written in Perl and Python. eFORGE takes a list of EWAS array probes, and tests them for overlap enrichment with epigenetic tracks using an extensive database of 815 individual datasets. eFORGE currently includes tracks for DNaseI hotspots, 5 histone marks and 15 chromatin states. Probes can be filtered using a 1-kb proximity filter, and can be input in either bed or probeid format. Statistical enrichment analysis is performed using a binomial test against an array-specific background. eFORGE outputs key information including Benjamini-Yekutieli-corrected p-values, sample IDs and lists of probes overlapping tracks in each sample. Both static and interactive charts and tables are provided to view results (Fig. 1A).

Fig. 1. Output examples of eFORGE v2.0. [A] Enrichment in brain enhancers and TSS flanking chromatin states for the top 200 sites from an Illumina EPIC array study (Moran et al., 2016). [B] TF motifs with the highest enrichment for the top 1000 study probes, including two RFX5 motifs. [C] Distribution of study sites in aggregated RFX5 footprints from brain samples shows 6 of the 1000 top study probes overlapping 5 different positions within the motif (q-value=0.038, Hypergeometric test, BY correction).

eFORGE chromatin state enrichment analysis extends previous eFORGE analyses by breaking down cell type-specific signal into regulatory element classes (e.g. subcategories of promoters, enhancers, and transcribed regions). Furthermore, the activity of many of these classes is known to be associated with the binding of sequence-specific transcription factors (TFs). Interestingly, DNAm changes can also result as a consequence of the binding of sequence-specific TFs (Smith and Meissner, 2013).

To break down cell type-specific signal into particular TF groups we have generated eFORGE-TF, a software suite that allows for TF analysis at three levels. First, it analyses the EWAS probe list for TF motif enrichment across all known TF motifs (Fig. 1B). This analysis can optionally be conditioned to DNase I footprints. Second, eFORGE-TF performs a cumulative analysis across an aggregated set of DNase I

footprints to visualise DNAm changes in relation to particular basepairs of an aggregated footprint (Fig. 1C). Third, eFORGE-TF provides a locus-specific gallery to inspect individual probes using a combination of TF motifs and DNase I footprints. These three analysis levels provide a robust and comprehensive assessment of TF associations for a given EWAS probe list.

In each gallery panel, eFORGE-TF includes an interactive browser for locus-specific analysis. This browser overlays multiple levels of information such as footprints, TF motifs and genomic coordinates, providing an in-depth view into the TF associations of a particular locus. Such a tool can aid both EWAS interpretation and epigenome editing approaches, which can benefit from the characterisation of local TF binding sites (Voigt and Reinberg, 2013).

More details, including an example eFORGE analysis, are available (Supplementary Material).

3 Conclusion

This updated and improved version of eFORGE constitutes an extended and powerful tool for the analysis of Illumina EPIC and 450k array data.

Acknowledgements

We would like to acknowledge the IHEC Integrative analysis project for supporting this research.

Funding

C.E.B. was supported by a fellowship from the EU-FP7 project EpiTrain (316758). Research in S.B.'s group was supported by the Wellcome Trust (99148), Royal Society Wolfson Research Merit Award (WM100023), and EU-FP7 projects EpiTrain (316758), EPIGENESYS (257082), and BLUEPRINT (282510).

Conflict of Interest: none declared.

References

- Andersson,R. et al. (2014) An atlas of active enhancers across human cell types and tissues. *Nature*, 507, 455–461.
- Breeze,C.E. et al. (2016) eFORGE: A Tool for Identifying Cell Type-Specific Signal in Epigenomic Data. *Cell Rep.*, 17, 2137–2150.
- ENCODE Project Consortium (2012) An integrated encyclopedia of DNA elements in the human genome. *Nature*, 489, 57–74.
- Moran,S. et al. (2016) Validation of a DNA methylation microarray for 850,000 CpG sites of the human genome enriched in enhancer sequences. *Epigenomics*, 8, 389–399.
- Smith,Z.D. and Meissner,A. (2013) DNA methylation: roles in mammalian development. *Nat. Rev. Genet.*, 14, 204–220.
- Voigt,P. and Reinberg,D. (2013) Epigenome editing. *Nat. Biotechnol.*, 31, 1097–1099.