

A Bromodomain and Extraterminal Protein Inhibitor OTX015 Suppresses T Helper Cell Proliferation and Differentiation

Xiao Hu^{1,2,*}, Lauren P. Schewitz-Bowers^{2,3,*}, Philippa J. P. Lait², David A. Copland^{2,3}, Madeleine L. Stimpson², Jing Jing Li¹, Yizhi Liu¹, Andrew D. Dick^{2,3}, Richard W. J. Lee^{2,3,\$}, Lai Wei^{1,\$}

¹State Key Laboratory of Ophthalmology, Zhongshan Ophthalmic Center, Sun Yat-sen University, Guangzhou, 510060, China

² Translational Health Sciences, University of Bristol, Bristol, UK.

³National Institute for Health Research Biomedical Research Centre at Moorfields Eye Hospital NHS Foundation Trust and UCL Institute of Ophthalmology, London, UK.

*These authors contributed equally to this work

^{\$}Correspondence: richard.lee@bristol.ac.uk, weil9@mail.sysu.edu.cn

Supplementary Fig 1. Human CD4⁺ T cells sorting panel. A single-cell suspension of live human CD4⁺ T cells were sorted for CD3⁺/CD4⁺ double-positive cells, then CXCR3⁺CCR4⁻CCR6⁻ were sorted as Th1 cells, CXCR3⁺CCR4⁻CCR6⁺ as IFN- γ & IL-17 double positive cells and CXCR3⁻CCR4⁺CCR6⁺ as Th17 cells.

Supplementary Fig 2. Effects of OTX015 concentrations and treatment durations on murine CD4⁺ T cells. Murine CD4⁺ T cells were isolated and treated with different concentrations of OTX015 for different durations. (A) Viability change of murine Th1 or Th17 cells induced from CD4⁺ T cells by different concentrations of OTX015 for 96 hours (n = 2). (B) Viability of murine Th1 or Th17 cells induced from CD4⁺ T cells treated with 50 or 100 nM OTX015 for different durations of time (n = 2). (C) Proliferation change of murine Th1 or Th17 cells induced from CD4⁺ T cells treated with different concentrations of OTX015 for 96 hours (n = 2). (D) Proliferation change of murine Th1 or Th17 cells induced from CD4⁺ T cells treated with 50 or 100 nM OTX015 for different durations of time (n = 2). (E) Frequencies of IFN- γ - or IL-17-expressing cells in murine Th1 or Th17 cells induced from CD4⁺ T cells treated with different concentrations of OTX015 for 96 hours (n = 2). (F) Frequencies of IFN- γ - or IL-17-expressing cells in murine Th1 or Th17 cells induced from CD4⁺ T cells treated with 50 or 100 nM OTX015 for different duration of time (n = 2). (G) There was no difference in viability between control and 50 nM OTX015 treated group in murine Th1/Th17 induced from naïve CD4⁺ T cell or in stimulated murine memory CD4⁺ T cells (n =5 for Th1/Th17 cells and n =4 for memory CD4⁺ T cells). Data are shown as means \pm SD, * $P < 0.05$ ** $P < 0.01$.

Supplementary Fig 3. Effects of JQ1 and OTX015 on murine CD4⁺ T cell subsets. Murine CD4⁺ T cells were isolated and polarized into Th1 or Th17. Cells were treated with or without JQ1 or OTX015 at 50 and 100 nM for 3 days. (A) Frequencies of IFN- γ - or IL-17-expressing cells in murine Th1 or Th17

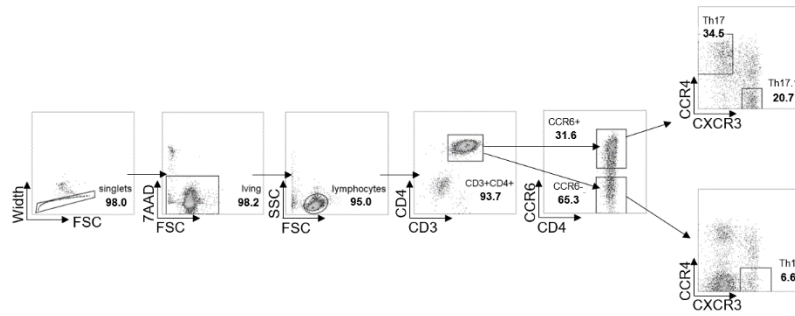
induced from CD4⁺ T cells (n =4). (B) Suppression of proliferation in murine Th1 or Th17 induced from CD4⁺ T cells (n = 4). (C) Viability of murine Th1 or Th17 induced from CD4⁺ T cell (n = 4). Data are shown as means ± SD.

Supplementary Fig 4. Viability of human CD4⁺ T cells treated with OTX015. Human CD4⁺ T cells were isolated and treated with different concentrations of OTX015 for 5 days (n = 12). Data are shown as means ± SD

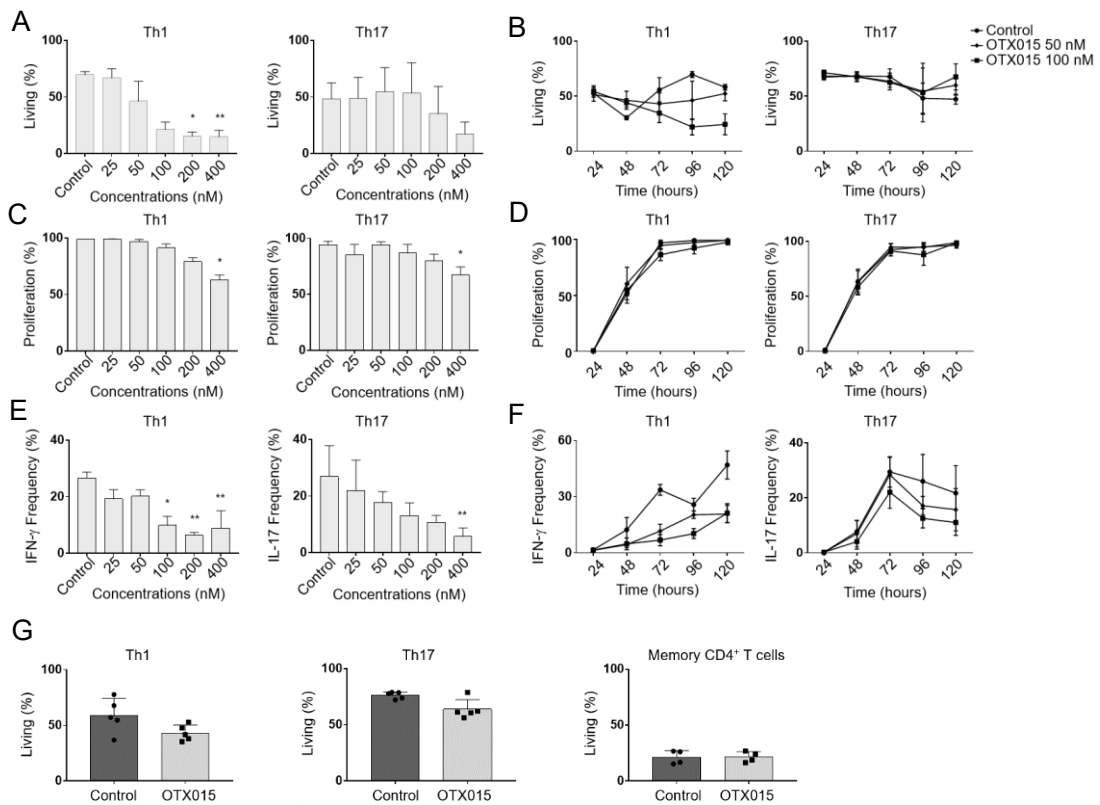
Supplementary Fig 5. Equivalent effects of JQ1 and OTX015 on human CD4⁺ T cells. (A - C) JQ1 and OTX015 equivalently affected the frequencies of IL-17 single-positive cells (A), IFN- γ single-positive cells (B) and IFN- γ /IL-17 double-positive cells (C) in the stimulated human CD4⁺ T cells (n =6). (D) JQ1 and OTX015 equivalently affected the proliferation of the stimulated human CD4⁺ T cells (n =6). (E) JQ1 and OTX015 equivalently affected the viability of the stimulated human CD4⁺ T cells (n =6). Data are shown as means ± SD

Supplementary Fig 6. Viability of different human T cell subsets treated with OTX015. Viability change of human naïve, central memory and effector memory T cells treated with different concentrations of OTX015 on day 5
Data are shown as means ± SD, ** $P < 0.01$ *** $P < 0.005$ **** $P < 0.001$.

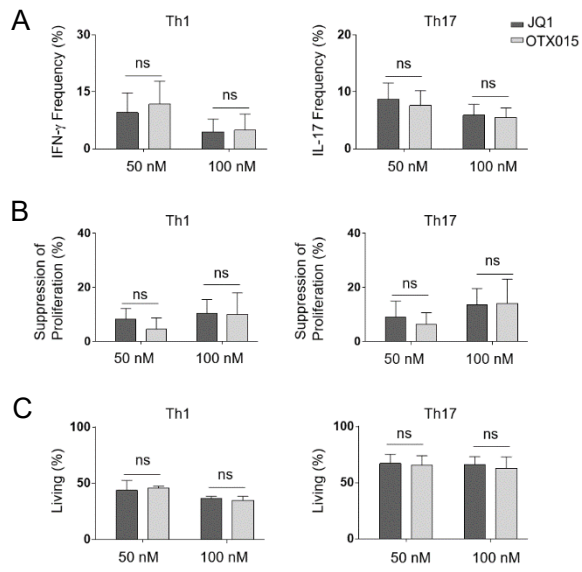
Supplementary Figure 1



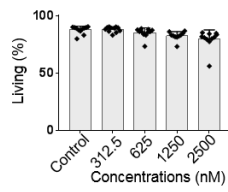
Supplementary Figure 2



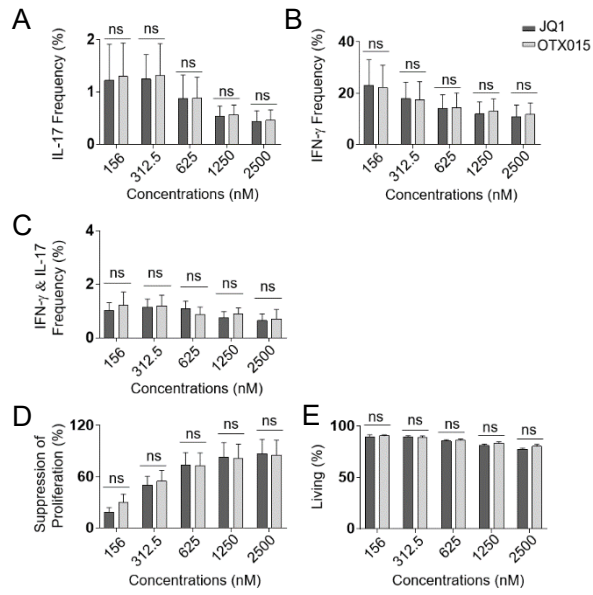
Supplementary Figure 3



Supplementary Figure 4



Supplementary Figure 5



Supplementary Figure 6

