

Figure 1. ROI drawn around an ulcerating rectal cancer on the MRTA software (TexRAD)

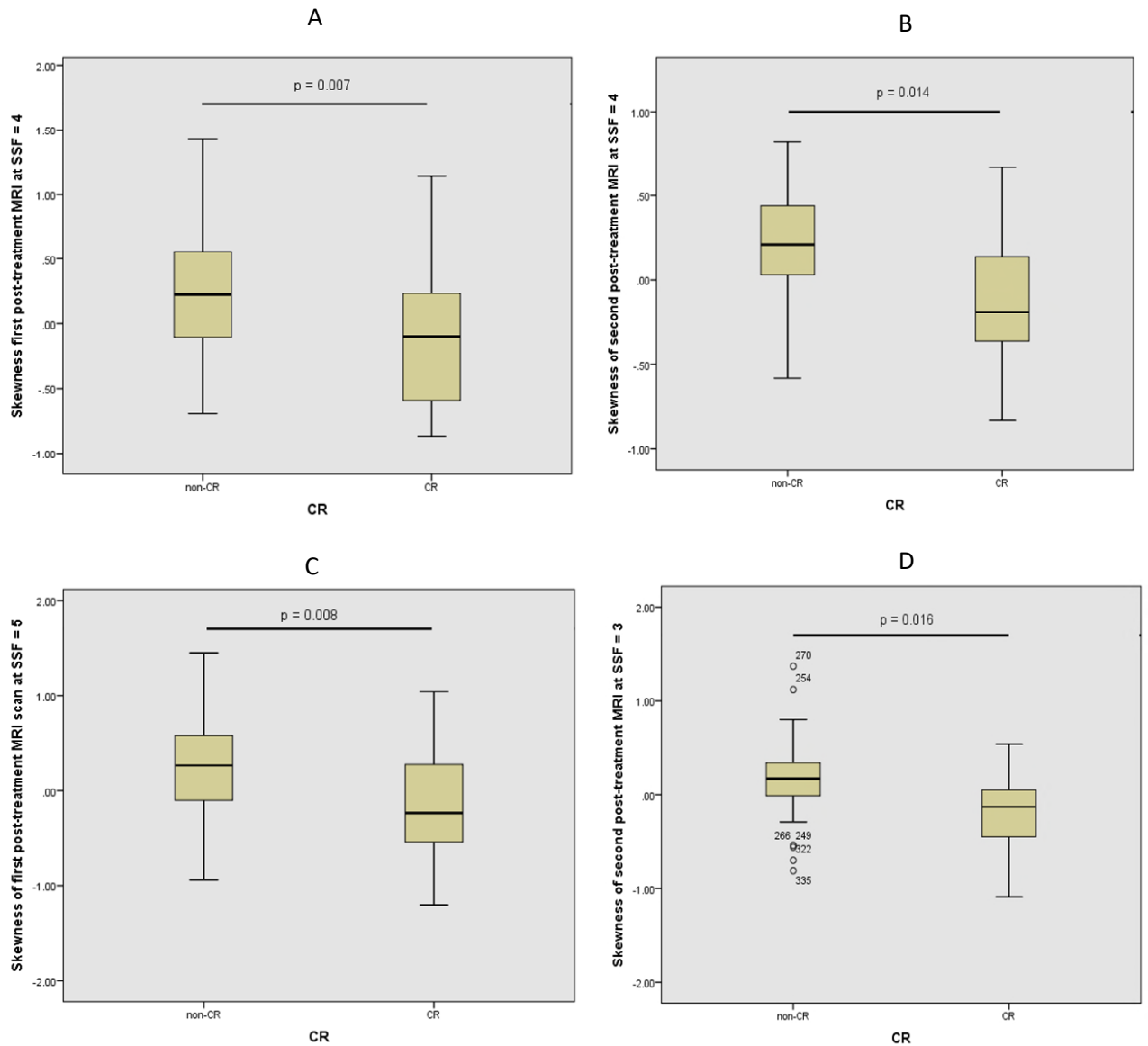


Figure 2.A. Skewness extracted from first post-treatment MRI at SSF 4; B. Skewness extracted from second post-treatment MRI at SSF 4; C. Skewness extracted from first post-treatment MRI at SSF 5; D. Skewness extracted from second post-treatment MRI at SSF 3. CR: Complete Response.

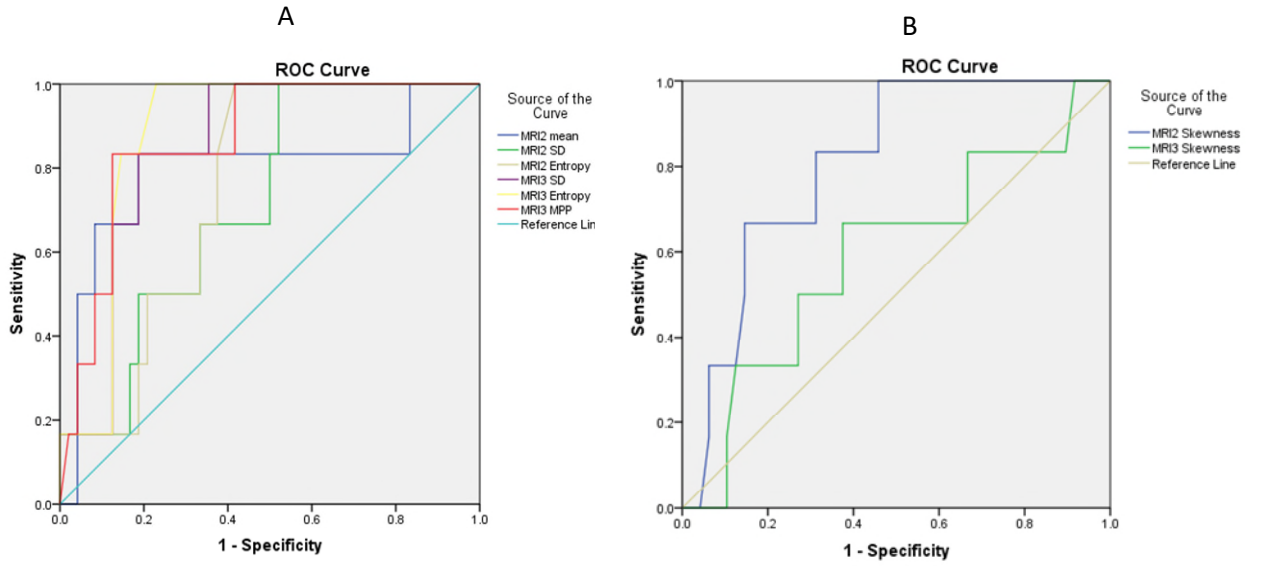


Figure 3. ROC Curve of significant parameters from Mann-Whitney U test. A. Mean, Standard Deviation, Entropy and mean of positive pixels; B. Skewness. SD: Standard Deviation; MPP: mean of positive pixels.