

SYSTEM DYNAMICS MODELLING

NICI ZIMMERMANN
 LECTURER IN SYSTEM DYNAMICS
 UNIVERSITY COLLEGE LONDON

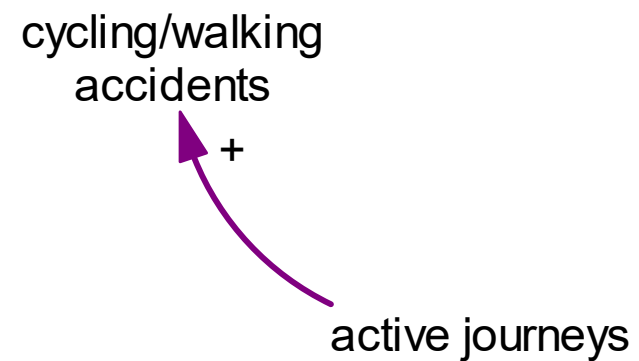


An example

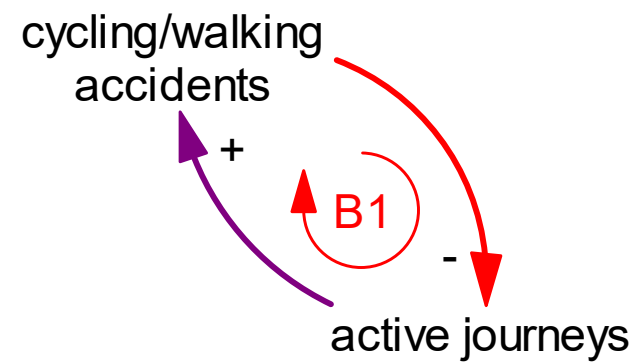
active journeys



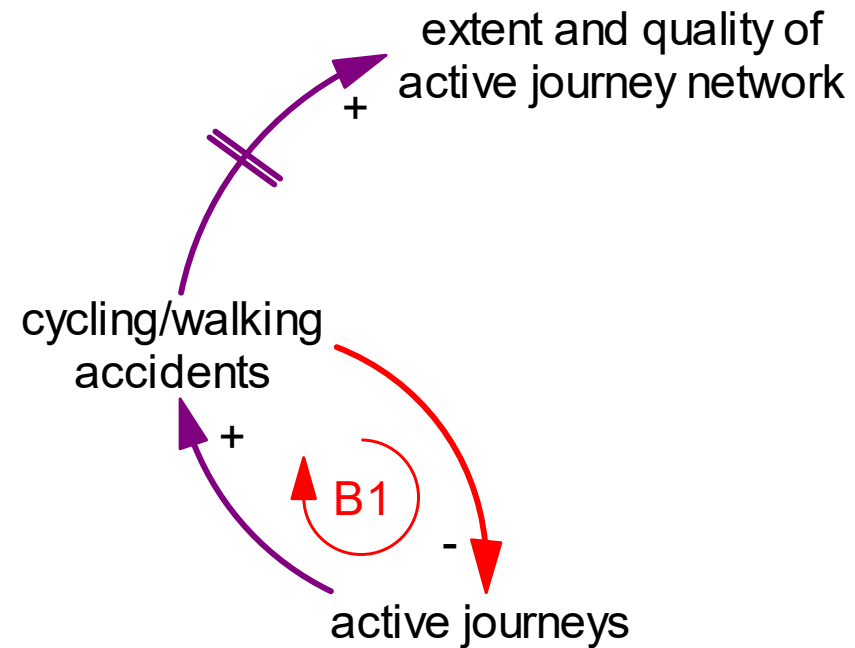
An example



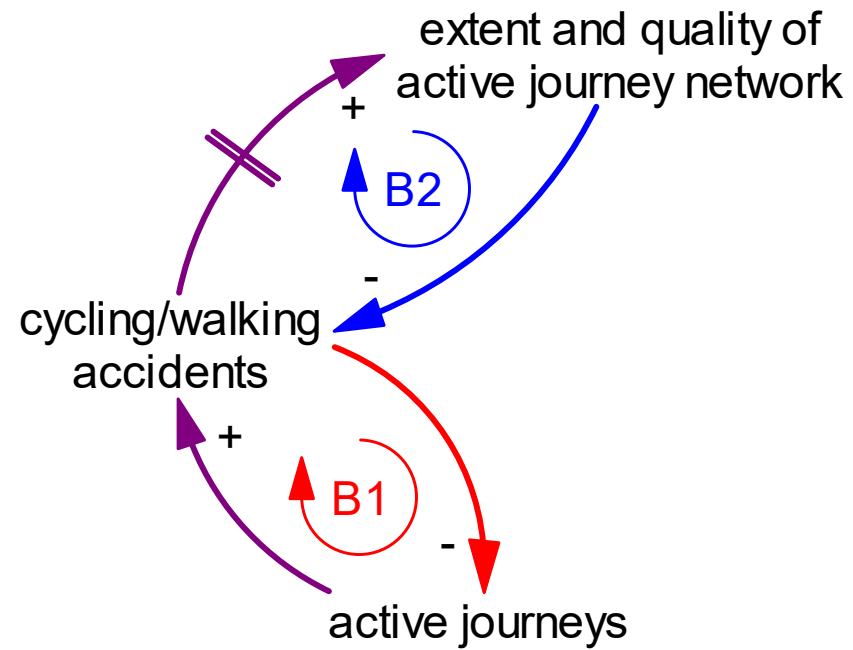
An example



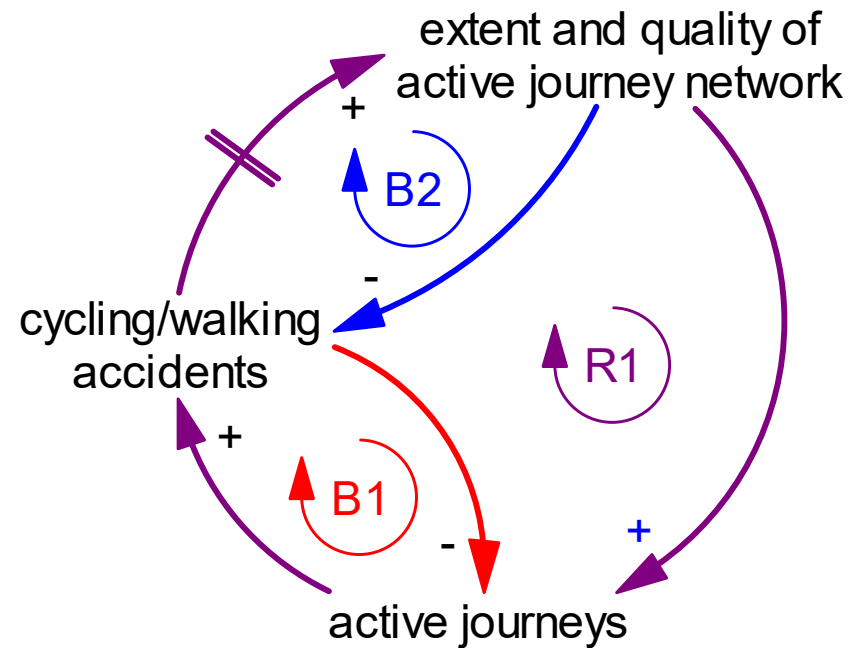
An example



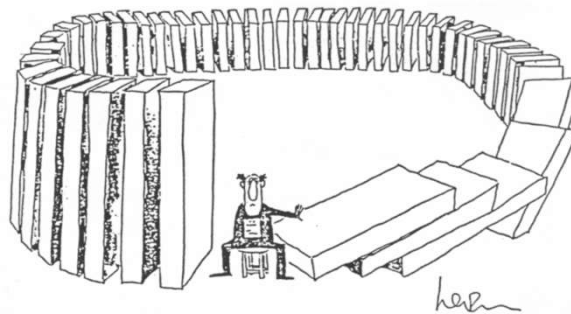
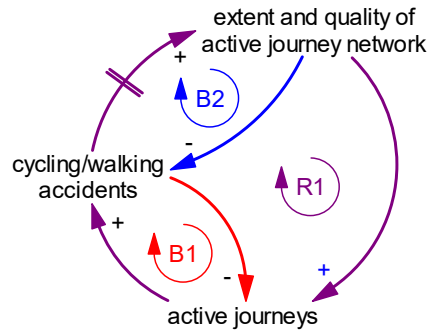
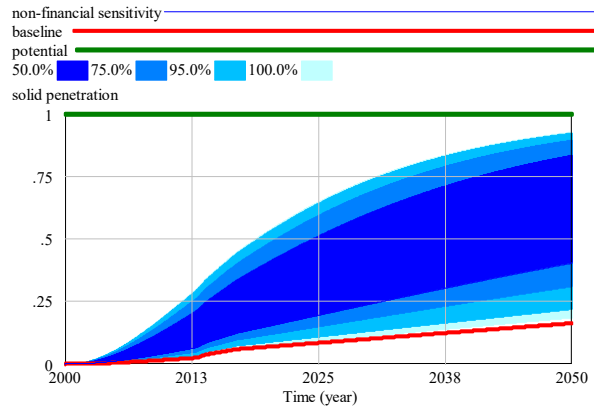
An example



An example

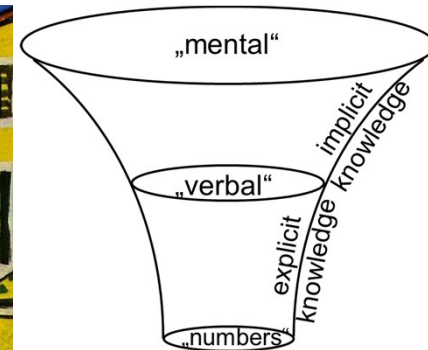
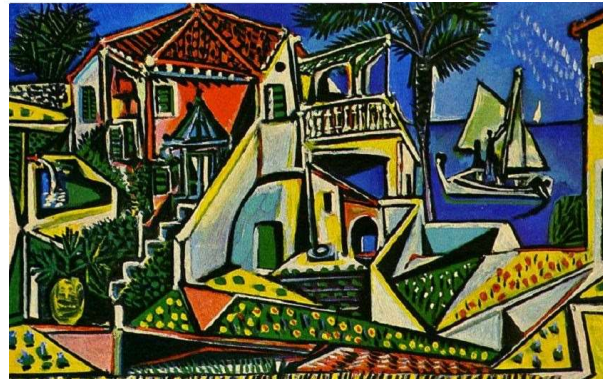


System dynamics – an overview



Drawing by Levin; © 1976 The New Yorker Magazine, Inc.

Pablo Picasso
<http://www.pablocicasso.org/picasso-paintings.jsp>



Energy Modelling Platform for Europe (EMP-E)

Modelling of Behavioural Aspects

Participatory system dynamics modelling for housing, energy and wellbeing interactions

Eker, S., N. Zimmermann, S. Carnohan, M. Davies. 2018. Participatory system dynamics modelling for housing, energy and wellbeing interactions. *Building Research & Information* **46**(7), 738–754.

http://www.systo.org/hew_wise.html



Thank you!

n.zimmermann@ucl.ac.uk

