

# Modeling the Transition to a New Economy: Lessons from Two Technological Revolutions

By ANDREW ATKESON AND PATRICK J. KEHOE\*

*Many view the period after the Second Industrial Revolution as a paradigm of a transition to a new economy following a technological revolution, including the Information Technology Revolution. We build a quantitative model of diffusion and growth during transitions to evaluate that view. With a learning process quantified by data on the life cycle of US manufacturing plants, the model accounts for the key features of the transition after the Second Industrial Revolution. But we find that features like those will occur in other transitions only if a large amount of knowledge about old technologies exists before the transition begins. (JEL L60, N61, N62, N71, N72, O33)*

The 1860–1900 period is often called the *Second Industrial Revolution* because of the large number of technologies invented during that time. Historians tell us that the Second Industrial Revolution launched a century of rapid development of new manufacturing technologies based on electricity (Sam H. Schurr et al. 1960; Nathan Rosenberg 1976; Warren D. Devine, Jr., 1983; Paul A. David 1990, 1991). This increase in the pace of technical change led eventually to a *new economy*, characterized by faster growth in manufacturing productivity, as measured by output per hour.

That particular transition to a new economy is viewed by many as paradigmatic of what happens after any major and sustained increase in the pace of technical change. The transition has three main features: a *productivity paradox* (a surprisingly long delay between the increase in the pace of technical change and the increase in the growth rate of measured productivity); *slow*

*diffusion of new technologies*; and *continued investment in old technologies*. David (1990) and Boyan Jovanovic and Peter L. Rousseau (2005) have argued that all three of these features of the transition after the Second Industrial Revolution have parallels in the transition after the more recent *Information Technology (IT) Revolution*.

Why did the transition after the Second Industrial Revolution have these features? And are they likely to be seen in other such transitions? Here we attempt to answer those questions by building and using a model of technology diffusion and growth. The model is intended to capture the main elements of historians' hypotheses about the technological constraints facing manufacturing plants, which are thought to have shaped the transition to a new economy after the Second Industrial Revolution. (See, for example, Schurr et al. 1960; Rosenberg 1976; Devine 1983; David 1990, 1991.) These elements are as follows: new technologies are embodied in plants, so that plants must be redesigned in order to use the new technologies; improvements in the technologies for new plants are ongoing; and new plants require a period of learning in order to use the new technologies. We employ this model to investigate what aspects of the technological constraints are critical quantitatively for generating this particular transition's three main features. We then use the model to ask what

\* Atkeson: Department of Economics, UCLA, Box 951477, Los Angeles, CA 90095-1477 (e-mail: andy@atkeson.net); Kehoe: Research Department, Federal Reserve Bank of Minneapolis, 90 Hennepin Avenue, Minneapolis, MN 55401-1804 (e-mail: pkehoe@res.mpls.frb.fed.us). We thank Kathy Rolfe and Joan Gieseke for excellent editorial assistance and the National Science Foundation for research support. The views expressed herein are those of the authors and not necessarily those of the Federal Reserve Bank of Minneapolis or the Federal Reserve System.

lessons from the transition after the Second Industrial Revolution can be learned to usefully guide research on other technological revolutions, especially the recent IT Revolution.

We discover that, quantitatively, learning is the critical technological constraint in our model. Indeed, to reproduce the three main features of the transition, the model needs learning about embodied technologies to be both substantial and protracted.

When the learning process in the old economy is substantial and protracted, our model generates the first of the transition features—a productivity paradox. It does so because, with such a learning process, the model implies that at the start of the transition, agents have built up a large stock of knowledge about old embodied technologies. Agents who have done that naturally don't quickly abandon the existing technology in favor of a new one. Instead, they spend a long time continuing to learn about their existing technology before abandoning it in favor of a new one. This procedure creates a long delay between the increase in the pace of technical change and the increase in the growth rate of measured productivity.

By the same logic, learning and built-up knowledge are critical for generating the second of the three transition features—a slow diffusion of new technologies. Our model generates S-shaped diffusion curves from heterogeneity across plants in built-up knowledge about old technologies: plants with little built-up knowledge adopt the new technology sooner, while plants with a lot of built-up knowledge adopt it later.

Finally, when learning is substantial and protracted, our model also generates the third transition feature—ongoing investment in old technologies even after new technologies are introduced. This ongoing investment occurs because existing plants embodying old technologies continue to learn and thus grow by adding physical capital and labor for quite some time after new technologies are introduced.

We use micro data on US manufacturing plants to measure the learning process at the plant level and find that it is, in fact, substantial and protracted. Indeed, one of our main contributions in making the model quantitative is to use micro data on the life-cycle patterns of plants in the US economy—their birth, growth,

and death—to infer the parameters of the learning process at the plant level. Our method here builds on the work of Hugo Hopenhayn and Richard Rogerson (1993) and our own earlier work (Atkeson and Kehoe 2005). With our method, we find that learning continues for at least 20 years.

When the parameters of our model are set using our method for inferring learning, the model's predictions match the three main features of the transition after the Second Industrial Revolution surprisingly well. We find it intriguing that the model matches the data so well, even though we did not attempt to replicate any features of the transition after the Second Industrial Revolution when we chose the parameters of our model.

What lessons can be drawn from our model for transitions after other technological revolutions, particularly after the more recent IT Revolution? We investigate this question by following the lead of David (1990), Timothy F. Bresnahan, Erik Brynjolfsson, and Lorin M. Hitt (2002), and others who argue that information technologies are similar to electricity in that they open up new possibilities for organizing business practices within all types of organizations, and these organizations need to be redesigned to make productive use of the new information technologies. Motivated by this work, we reinterpret our model as having business organizations rather than manufacturing plants as the basic units of production. We assume that each new business organization embodies a new set of business practices that represent the current frontier of such practices, and then learns to become more productive with these practices over time.

The general lesson we draw from our model is that its implications for the transition after a technological revolution depend on the historical context in which the revolution occurs. In particular, our model predicts a slow transition, such as that seen after the Second Industrial Revolution, only if agents have accumulated a large stock of *built-up knowledge* of old technologies before the transition begins. For the Second Industrial Revolution, we argue that agents did have a large stock of built-up knowledge about factories based on steam and waterpower. For the IT Revolution, our model will predict a slow transition only if, at the start of

that revolution, agents had a large stock of built-up knowledge about business practices based on old information technologies.

We use the model to examine which factors determine the extent of built-up knowledge in equilibrium. We find that the relative pace of technical change in the old economy is one of those factors: the faster the pace of the change, the smaller is the extent of built-up knowledge and, hence, the faster is the transition to a new economy after a technological revolution. We also find that the more protracted and substantial the learning process, the larger the extent of built-up knowledge and the slower the transition after a technological revolution.

Currently, we know little about the extent of built-up knowledge about business practices in organizations at the start of the IT Revolution. Our model suggests, however, that the extent of that knowledge can be inferred from data on the diffusion and life cycle of business practices. To generate quantitatively a slow transition after the IT Revolution in our model, we must assume that the diffusion of business practices before that revolution was very slow and that the life cycle of these business practices was very prolonged. For example, for our model to generate a transition after the IT Revolution that is as slow as that after the Second Industrial Revolution, at the start of the IT Revolution over 50 percent of the work force must have been employed in organizations with business practices that were more than six decades old.

Our method of measuring learning at the plant level contrasts sharply with the standard approach in the learning literature, exemplified by the work of Byong-Hyong Bahk and Michael Gort (1993). These researchers associate learning in a plant with changes in the average productivity of labor and capital at that plant as the plant ages. This method leads to the conclusion that there is very little learning at the plant level. Hence, if the method were used with our model, it would predict a fast transition, a fast diffusion of new technologies, and little or no ongoing investment in old technologies.

We argue in favor of our method of measuring learning because, in the context of our model, the method proposed by Bahk and Gort (1993) is conceptually flawed. Indeed, if it were applied to our model, it would find no learning

at all, regardless of how much learning was actually going on. Our method for measuring learning is one of the features that distinguish our work from related models of transition based on embodiment and learning, including those of Andreas Hornstein and Per Krusell (1996) and Jeremy Greenwood and Mehmet Yorukoglu (1997).

At the general level, the technology diffusion in our model is related to the theoretical literature on S-shaped diffusion curves, including the work of Jovanovic and Saul Lach (1989) and V. V. Chari and Hopenhayn (1991). In contrast to that work, we have neither spillovers of learning nor complementarities. Our model also differs from most of the literature on diffusion in that it generates substantial ongoing investment in old technologies. (An important exception is the work of Chari and Hopenhayn 1991.)

More recent theoretical work on diffusion after a major technical change includes that of Philippe Aghion and Peter Howitt (1998), Elhanan Helpman and Manuel Trajtenberg (1998), and John Laitner and Dmitriy L. Stoliarov (2003). In this literature, often referred to as work on *general purpose technologies*, the diffusion of a major new technology is constrained by the need to develop complementary inputs for that technology. These explanations for the slow diffusion of new technologies do not account for substantial investment in old technologies after major technical change.

### I. Documenting the Transition after the Second Industrial Revolution

We document the three main features of the transition to a new economy that occurred after the Second Industrial Revolution: a productivity paradox, a slow diffusion of new technologies, and ongoing investment in old technologies.

Many of the technologies that had a profound impact on living standards in the twentieth century were invented between 1860 and 1900. These technologies include electricity, the internal combustion engine, the production of petroleum and other chemicals, telephones and radios, and indoor plumbing. (For a description of technological inventions during this time, see the work of Robert J. Gordon 2000a.) Although all of these inventions undoubtedly had a substantial economic impact, we follow Schurr et

FIGURES 1-2. A Gradual Transition to a New Economy

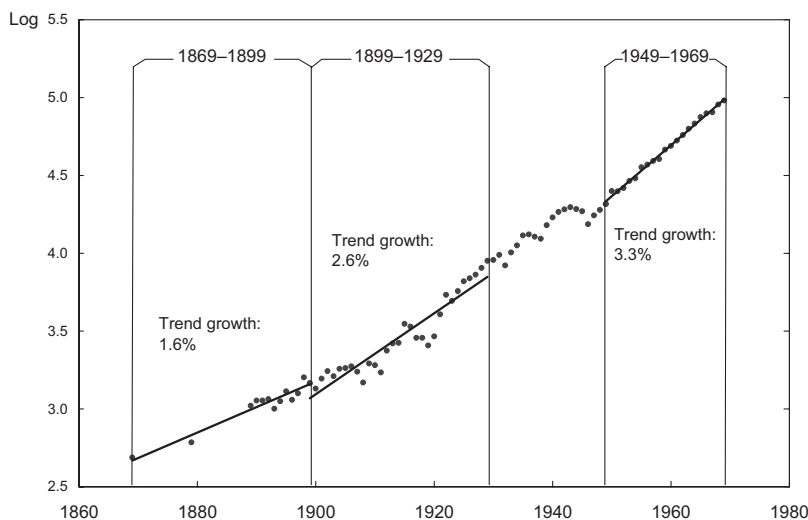


FIGURE 1. A SLOW INCREASE IN PRODUCTIVITY GROWTH ...  
(Log of output per hour and trend growth in US manufacturing, 1869-1969)

Source: US Department of Commerce (1973).

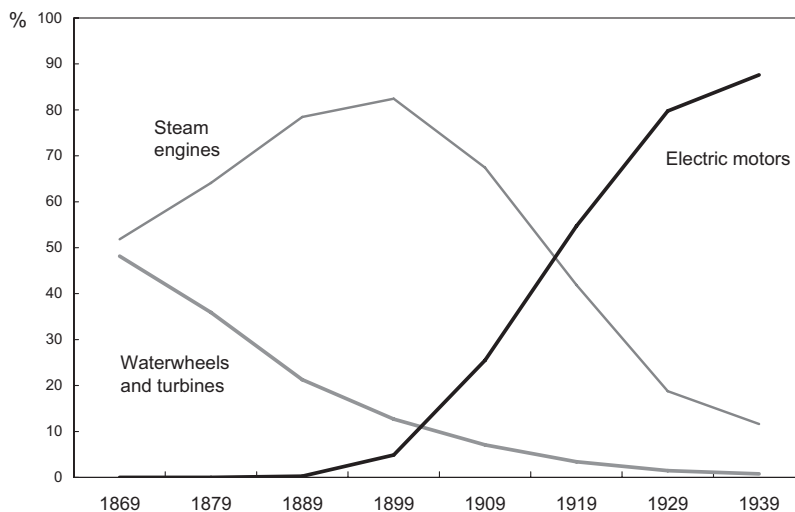


FIGURE 2. ... AND A SLOW DIFFUSION OF ELECTRIC POWER  
(Percentage of total horsepower from three sources of mechanical drive in US manufacturing, 1869-1939)

Source: Devine (1983, 351, table 3).

al. (1960, 1990), Rosenberg (1976), Devine (1983), and David (1990, 1991) and focus on the new technologies based on electricity. These historians have argued that this revolution launched a century-long period of rapid devel-

opment of new technologies for manufacturing based on electricity (Devine 1990).

In Figure 1, we show this historical period does include a productivity paradox, or a substantial lag between the increased pace of tech-

nical change and the response of measured productivity growth.<sup>1</sup> We have computed linear trends in annual output per hour in US manufacturing for three periods: 1869–1899, 1899–1929, and 1949–1969. (We chose these periods to omit the Great Depression and World War II; data are from the US Department of Commerce 1973.) The trend growth rate of output per hour in the three periods increases gradually, from 1.6 percent to 2.6 percent to 3.3 percent. (We chose 1869 as the starting point because the early data are derived from the US Census Bureau's censuses of manufacturing establishments, which have been taken every decade since that year. We focus on the subsequent 100-year period. Gordon (2000b) documents a similar gradual acceleration for the growth of output per hour for the US economy as a whole.)

In documenting the slow diffusion of new technologies, we focus on the diffusion of electric power in manufacturing over the 1869–1939 period. In Figure 2 we plot the percentages of mechanical power in US manufacturing establishments that were derived from water, steam, and electricity from 1869 to 1939 (Devine 1983, table 3). Before 1899, more than 95 percent of mechanical power was derived from water and steam. Between 1899 and 1929, electricity use gradually replaced water and steam, so that by 1929, over 75 percent of mechanical power was electric. If we measure the diffusion of electricity in manufacturing starting in 1869, we see that it took 50 years for electricity to provide 50 percent of mechanical power. This measure of the speed of diffusion is, of course, sensitive to the choice of starting date. A measure

of the speed of diffusion that is less sensitive to that choice is the time required for a technology to diffuse from 5 percent to 50 percent. For electricity in US manufacturing, such diffusion took place over about 20 years, from 1899 to 1919.

In documenting the ongoing investment in old technologies, we focus on the ongoing growth of steam power over the 1869–1939 period. Figure 2 also shows that the percentage of mechanical power derived from steam increased from roughly 50 percent in 1869 to roughly 80 percent in 1899. Given that the total amount of mechanical power in US manufacturing increased over this time period, these data imply that there was substantial net new investment in steam power for at least 30 years after the development of electric power. To put the diffusion paths of these three types of power in a longer-term perspective, recall that water-power is an extremely old technology, while the use of steam power started to increase in the United States between 1800 and 1810 (Jeremy Atack, Fred Bateman, and Thomas Weiss 1980). During the 1800–1899 period, water-power slowly gave way to steam power, and only after that did electric power gradually replace both of these older technologies.

## II. A Model of Technology Diffusion

We now present our quantitative general equilibrium model of the diffusion of new technologies and the corresponding impact of these technologies on economic growth. We build in three assumptions meant to capture historians' hypotheses about the technological constraints faced by manufacturers during the transition after the Second Industrial Revolution. (For a more detailed discussion of the links between the historical analyses and our model, see our earlier work, Atkeson and Kehoe 2001.) The assumptions are the following:

- *New plants embody new technologies.*<sup>2</sup> This assumption is motivated by the work of

<sup>1</sup> Throughout, we take as given the standard view expressed by historians (like David 1990) that a sustained increase in the rate of technical change began in the Second Industrial Revolution and continued for many decades afterward. This view, together with the data on manufacturing productivity, leads many observers to see a productivity paradox after the Second Industrial Revolution. Our objective is to assess quantitatively whether our model of growth and technology diffusion can account for this productivity paradox as well as the associated diffusion patterns of new and old technologies. An alternative approach, which we do not take, is to argue that the historians are mistaken: the pace of technical change did not increase until several decades after the Second Industrial Revolution and, hence, there is no productivity paradox. Such an approach would have to confront the issue of how to generate the observed patterns of diffusion of new and old technologies.

<sup>2</sup> Note that we do not assume that all new technologies are embodied in new plants. In fact, our model is consistent with the idea that most of the ongoing technical change in the economy is driven by either disembodied technical change or technical change embodied in other factors, such as capital goods or labor.

Devine (1983, 1990) and David (1990, 1991), who argue that manufacturing plants needed to be completely redesigned in order to make good use of the new technologies stemming from the development of electric power.

- *Improvements in the technology for new plants are ongoing.* Specifically, we model the transition to a new economy after the Second Industrial Revolution as arising from a once-and-for-all increase in the rate of improvement in the frontier technology embodied in the design of new plants. This assumption captures the arguments of Schurr et al. (1960), Rosenberg (1976), Devine (1990), and Sidney Sonensblum (1990) that the process of improving efficiency through changes in factory design after the Second Industrial Revolution continued for decades, through at least the 1980s, and lay behind the new economy after this revolution.
- *New plants improve their technology through a period of learning.* This assumption is consistent with a broad body of work on learning as well as the discussions of David (1990, 1991) and Alfred D. Chandler (1992).

In describing our model formally below, we build in these assumptions in abstract terms so that, with a simple reinterpretation, the model can be applied to a variety of transition experiences. At first, we interpret the elements of the model with an eye toward applying it to the transition after the Second Industrial Revolution. Later we discuss how to reinterpret these elements in order to apply the model to the transition after the IT Revolution (see Section IVA).

### A. The Basic Structure

In the model, time is discrete and is denoted by periods  $t = 0, 1, \dots$ . The economy has a continuum of size 1 of households. Households have preferences over consumption  $c_t$  given by  $\sum_{t=0}^{\infty} \beta^t \log(c_t)$ , where  $\beta$  is the discount factor. Each household consists of a worker and a manager, each of whom supplies one unit of labor inelastically. Households are also endowed with the initial stock of physical capital and ownership of the plants that exist in period 0. Given sequences of wages for workers, wages

for managers, intertemporal prices  $\{w_t, w_{mt}, p_t\}_{t=0}^{\infty}$ , initial capital holdings  $k_0$ , and an initial value  $a_0$  of the plants that exist in period 0, households choose sequences of consumption  $\{c_t\}_{t=0}^{\infty}$  to maximize utility subject to the budget constraint

$$(1) \quad \sum_{t=0}^{\infty} p_t c_t \leq \sum_{t=0}^{\infty} p_t (w_t + w_{mt}) + k_0 + a_0.$$

Production in this economy is carried out in plants. In any period, a plant is characterized by its *specific productivity*  $A$  and its age  $s$ . To operate, a plant uses one unit of a manager's time, physical capital, and (workers') labor as variable inputs. If a plant with specific productivity  $A$  operates with one manager, physical capital  $k$ , and labor  $l$ , the plant produces output

$$(2) \quad q = zA^{(1-\gamma\theta)/\theta} F(k, l)^\gamma,$$

where the function  $F$  is linearly homogeneous of degree 1 and the parameter  $\gamma \in (0, 1)$ . The technology parameter  $z$  is common to all plants and grows at an exogenous rate. We call  $z$  *economy-wide productivity*. Following Robert E. Lucas, Jr. (1978, 511), we call  $\gamma$  the *span of control* parameter of the plant's manager. Here, the parameter  $\gamma$  may be interpreted as determining the degree of diminishing returns at the plant level. We refer to the pair  $(A, s)$  as the plant's *organization-specific capital*, or simply its *organization capital*. This pair summarizes the built-up expertise, or knowledge, that distinguishes one organization from another. In (2), the exponent  $(1 - \gamma\theta)/\theta$  on  $A$  is a convenient scaling of specific productivity.

Each plant produces a differentiated product, which a competitive firm aggregates to produce a homogeneous final good. Each plant chooses its price and inputs to maximize profits, given the downward-sloping demand from the firm that produces final goods. The competitive final goods firm produces aggregate output according to

$$y_t = \left[ \sum_s \int_A q_t(A)^\theta \lambda_t(A, s) \right]^{1/\theta},$$

where  $\lambda_t(A, s)$  denotes the measure of plants with organization capital  $(A, s)$  that operate in  $t$ . The final goods firm has a static demand func-

tion  $q_t(A) = p_t(A)^{-1/(1-\theta)}y_t$ . Note that we use a symmetry property of the equilibrium: independently of age, all operating plants with the same specific productivity  $A$  choose the same output and set the same price. We also normalize the price of the final good to be 1.

The timing of events in period  $t$  is as follows. An owner's decision whether to operate a plant is made at the beginning of the period. Plants that do not operate produce nothing; the organization capital in these plants is lost permanently. Plants with organization capital  $(A, s)$  that do operate, in contrast, hire a manager, capital  $k_t$ , and labor  $l_t$  and produce output  $q$  according to (2). At the end of the period, operating plants draw independent innovations (or shocks)  $\varepsilon$  to their specific productivity, with probabilities given by age-dependent distributions  $\{\pi_s\}$ . Thus, a plant with organization capital  $(A, s)$  that operates in period  $t$  has stochastic organization capital  $(A\varepsilon, s+1)$  at the beginning of period  $t+1$ .

Consider the process by which a new plant enters the economy. Before a new plant can enter in period  $t$ , a manager must spend period  $t-1$  preparing and adopting a *blueprint* for constructing the plant that determines the plant's initial specific productivity  $\tau_t$ . Blueprints adopted in period  $t-1$  embody the frontier of knowledge (or *frontier blueprint*) regarding the design of plants at that point in time. This frontier evolves exogenously, according to the sequence  $\{\tau_t\}_{t=0}^\infty$ . Thus, a plant built in  $t-1$  starts period  $t$  with initial specific productivity  $\tau_t$  and organization capital  $(A, s) = (\tau_t, 0)$ . Because this level of productivity is built into the plant at its start, we refer to growth in  $\tau_t$  as *embodied technical change*.

We assume that capital and labor are freely mobile across plants in each period. Thus, for any plant that operates in period  $t$ , the decision of how much capital and labor to hire is static. Given a rental rate for capital  $r_t$ , a wage rate for labor  $w_t$ , and a managerial wage  $w_{mt}$ , the operating plant chooses employment of capital and labor to maximize variable profits

$$(3) \quad d_t(A) = \max_{p,q,k,l} pq - r_t k - w_t l$$

subject to (2) and the static demand function. Let  $p_t(A)$ ,  $q_t(A)$ ,  $k_t(A)$ , and  $l_t(A)$  denote the solutions to this problem.

The decision whether to operate a plant is dynamic. This decision problem is described by the Bellman equation

$$(4) \quad V_t(A, s) = \max \left[ 0, d_t(A) - w_{mt} + \frac{p_{t+1}}{p_t} \int_{\varepsilon} V_{t+1}(A\varepsilon, s+1) \pi_{s+1}(d\varepsilon) \right],$$

where the sequences  $\{\tau_t, w_t, r_t, w_{mt}, p_t\}_{t=0}^\infty$  are given. The value  $V_t(A, s)$  is the expected discounted stream of returns to the owner of a plant with organization capital  $(A, s)$ . This value is the maximum of the returns from closing the plant and those from operating it. The second term in the brackets on the right side of (4) is the expected discounted value of operating a plant of type  $(A, s)$ . It consists of current returns  $d_t(A) - w_{mt}$  and the discounted value of expected future returns  $V_{t+1}(A, s)$ . The plant operates only if the expected returns from operating it are non-negative.

An owner's decision whether to hire a manager to prepare a blueprint for a new plant is also dynamic. In period  $t$ , this decision is determined by  $V_t^0 = -w_{mt} + p_{t+1}V_{t+1}(\tau_{t+1}, 0)/p_t$ . The value  $V_t^0$  is the expected stream of returns to the owner of a new plant, net of the initial fixed cost  $w_{mt}$  of paying a manager to prepare the blueprint for the plant. Managers are hired to prepare blueprints for new plants only if  $V_t^0 \geq 0$ . Since there is free entry into the activity of starting new plants, in equilibrium we require that  $V_t^0 \phi_t = 0$ , where  $\phi_t$  is the measure of managers starting new plants.

Let  $k_t$  denote the aggregate physical capital stock. Then the resource constraints for physical capital and labor are  $\sum_s \int_A k_t(A) \lambda_t(dA, s) = k_t$  and  $\sum_s \int_A l_t(A) \lambda_t(dA, s) = 1$ . The resource constraint for aggregate output is  $c_t + k_{t+1} = y_t + (1-\delta)k_t$ , where  $\delta$  is the depreciation rate of capital. The resource constraint for managers is  $\phi_t + \sum_s \int_A \lambda_t(dA, s) = 1$ .

An equilibrium is defined in the obvious way. In this equilibrium, in each period  $t$ , the decision to operate a plant is summarized by an age-dependent cutoff rule  $A_t^*(s)$ . In period

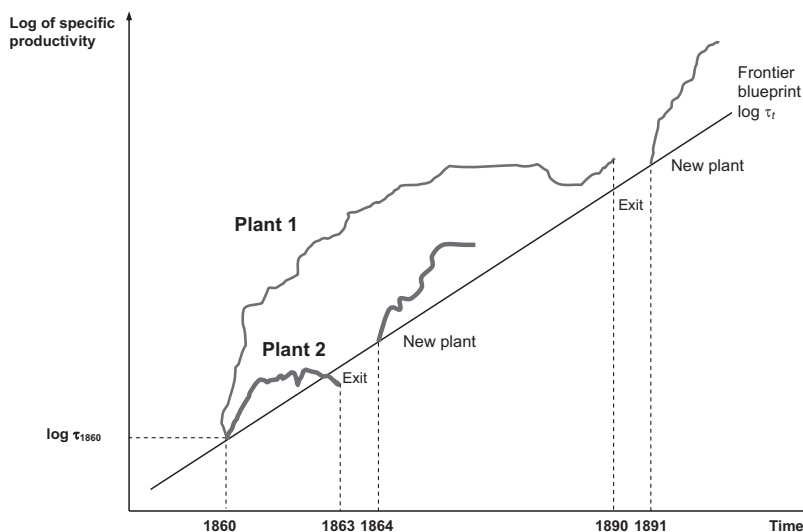


FIGURE 3. THE LIFE CYCLE OF PLANTS IN THE MODEL  
(Productivity of two plants versus that of frontier blueprint over time)

$t$ , plants of age  $s$  with specific productivity  $A \geq A_t^*(s)$  continue operating, and those with  $A < A_t^*(s)$  close.

To get a sense of the process for the birth, growth, and death—or the *life cycle*—of plants that our model generates, consider Figure 3. Here we show the evolution of the specific productivity of two plants that both enter in period  $t = 1860$ . Both of these plants start with productivity equal to that of the frontier blueprint in 1860, namely,  $\tau_{1860}$ . This frontier blueprint grows exogenously over time at a constant rate, as shown by the solid straight line labeled  $\log \tau_t$ . The two plants each experience random shocks to their plant-specific productivity drawn from age-dependent distributions  $\pi_s$ . Plant 1 is relatively lucky in that it draws especially favorable shocks to its specific productivity, and plant 2 is relatively unlucky.

In every period, each plant makes a decision whether to continue or to close, or *exit*. This decision is based on a comparison of the plant's current specific productivity  $A_t$  and its future prospects for learning, determined by the age-dependent distributions  $\pi_s$  relative to the alternative of exiting and starting a new plant with the current frontier blueprint. The age-dependent cutoff rule  $A_t^*(s)$  summarizes the decision. Plant 1 has relatively high specific

productivity; hence, it exits only after operating 30 years. Plant 2 has relatively low specific productivity and exits much sooner. After these plants exit, the manager of each plant starts a new plant with the current frontier blueprint and begins the process of building up specific productivity in the new plant.<sup>3</sup>

In our model, technologies embodied in plants diffuse throughout the economy as new plants embodying these technologies are born and grow. Figure 3 also illustrates the mechanics of this diffusion. In 1863, the manager of plant 2 decides to exit and start a new

<sup>3</sup> Since our model has a fixed number of managers and each manager can either start a new plant or operate an existing plant, our assumptions imply that on a balanced growth path, the number of plants is fixed. An alternative assumption, pursued by Hopenhayn and Rogerson (1993), is that, instead, what is fixed is the cost in terms of consumption goods of starting a new plant. In that alternative model, the number of plants grows over time.

We have chosen our specification because it seems to be a good approximation to the data. Saul S. Sands (1961) reports that over the 1904–1947 period, the number of manufacturing plants in the United States grew only 0.5 percent per year, while output per manufacturing establishment grew nearly 3.0 percent per year. Clearly, most of the growth of output in this period came from more output from each plant and only a small part from an increase in the number of plants.



plant that embodies the frontier blueprint of 1864 and then begins to learn with that new technology. Likewise, in 1890 the manager of plant 1 decides to exit and start a new plant that embodies the frontier blueprint of 1891 and then begins to learn with that new technology. In this manner, new plants embodying new technologies gradually replace old ones. Since our model has many such plants, each with different shocks to specific productivity, this diffusion of new embodied technologies occurs smoothly over time.

Formally, we measure the diffusion of embodied technologies as follows. Let  $l_{t,s} = \int_A (l_t(A)/l_t)\lambda_t(dA, s)$  denote the fraction of labor employed in plants of age  $s$ , and let

$$(5) \quad D_{t,t+k} = \sum_{s=0}^k l_{t,s}$$

be the fraction of labor employed in plants of age  $k$  and younger. We measure the *diffusion in period  $t+k$  of embodied technologies* developed in period  $t$  or later by  $D_{t,t+k}$ , which, in the model, is the fraction of labor employed in plants using technologies developed in period  $t$  or later.

### B. Measuring the Learning Process

In our model, the process governing learning is a key determinant of the rate at which a new technology diffuses. In the model, learning at the plant level is represented by shocks to the plant's specific productivity. We argue here that data on plant size can be used to measure these shocks.<sup>4</sup> We then contrast our approach to measuring learning with the standard approach taken in the literature on learning.

<sup>4</sup> Our approach differs from that of a large literature which models specific productivity as endogenous. An advantage of our approach is that it allows us to match the process for productivity associated with learning directly to data on the growth process of plants. Moreover, at least in a steady state, we need not take a stand on whether this productivity is derived from active or passive learning, matching, or ongoing adoption of new technologies in existing plants. Outside of a steady state, however, we are implicitly assuming that the learning process does not vary with the growth rate of the economy.

*The Link between Plant Size and Plant-Specific Productivity.*—Our model implies a tight link between plant size and plant-specific productivity. Given this link, we can use data on the relative size of plants to infer the actual pattern of productivity changes, or *learning*, at the plant level.

To see the link between plant size and productivity, consider the static problem of allocating a given amount of capital and labor across plants at a point in time. For a given distribution  $\lambda_t$  of organization capital, it is convenient to define

$$(6) \quad n_t(A) = \frac{A}{\bar{A}_t}$$

as the *size* of a plant of type  $(A, s)$  in period  $t$ , where  $\bar{A}_t = \sum_s \int_A A \lambda_t(dA, s)$  is the aggregate of the specific productivities across all plants. The variable  $n_t(A)$  measures the relative size of the plant in terms of its capital or labor, in that the equilibrium allocations are  $k_t(A) = n_t(A)k_t$  and  $l_t(A) = n_t(A)l_t$ .

A similar result holds for cohorts of plants. To see this result, define the aggregate of the specific productivities of a cohort of plants of age  $s$  as  $\bar{A}_{t,s} = \int_A A \lambda_t(dA, s)$ . Note from (6) that  $\bar{A}_{t,s}/\bar{A}_t = \int_A n_t(A)\lambda_t(dA, s)$ . We then have the following proposition.

**PROPOSITION:** *The aggregate of specific productivities of plants of age  $s$  relative to that of all plants is equal to the share of total employment in those plants; that is,  $\bar{A}_{t,s}/\bar{A}_t = l_{t,s}$ , where  $l_{t,s} = \int_A [l_t(A)/l_t]\lambda_t(dA, s)$ .*

Given this proposition, we can use the data on employment shares by cohorts,  $l_{t,s}$ , to infer the pattern of learning, as measured by  $\bar{A}_{t,s}/\bar{A}_t$ . The data show that employment in a cohort of plants grows substantially as the cohort ages.<sup>5</sup> For example, in terms of the

<sup>5</sup> Here and throughout this study, our microeconomic data are taken from the US Census Bureau LRD on manufacturing plants. This dataset is described in Davis et al. (1996). We use data on employment, job creation, and job destruction from the 1988 panel of the LRD, which we obtained from John Haltiwanger's Web site, <http://www.bsos.umd.edu/econ/haltiwanger>.

cross section, the 1988 panel of the US Census Bureau's Longitudinal Research Database (LRD) on manufacturing plants shows that the employment share of plants rises at least for the first 20 years of a plant's life and that the employment share of a cohort of plants of age 20 is more than 7 times that of the cohort of brand-new plants. In terms of the panel evidence, J. Bradford Jensen, Robert H. McGuckin, and Kevin J. Stiroh (2001) show that the employment share of a cohort of plants starts small and grows steadily with age.

From the perspective of our model, the LRD data imply that the aggregate of specific productivities of a cohort of plants grows faster than aggregate productivity for at least 20 years. Since in the data the employment share of a cohort of plants of age 20 is more than 7 times that of brand-new plants, our model implies that plants that survive 20 years have, at that age, learned so much that they are not only much more productive than they were when they were first built, but also much more productive than plants that are brand-new in that twentieth year. Thus, for a relatively long period of time, the ongoing innovations that occur within an operating plant are, on average, much larger than the innovations from the frontier technology. In this sense, 20-year-old plants are technologically superior to their contemporary brand-new plants. We interpret this evidence as indicating that learning in plants is both substantial and protracted.

Note that the link between the employment shares  $l_{t,s}$  and relative productivities  $\bar{A}_{t,s}/\bar{A}_t$  established in the proposition is derived from static first-order conditions equating the value marginal product across plants. These first-order conditions hold regardless of any changes or trends in overall employment  $l_t$ . Hence, the fact that the data show trends in manufacturing employment—increasing in the first part of the century and decreasing in the second part—has no bearing on our method of inferring learning from employment shares.

We use employment shares of plant cohorts to infer the amount of learning that plants experience as they age. We also use them to infer the speed of diffusion of new technologies as expressed in (5).

*A Contrast with the Literature on Learning.*—We have argued that theory implies that learning manifests itself in the plant-specific, or organization-specific, component of productivity and can be uncovered from data on the relative size of organizations. This approach is quite different from that followed in much of the literature on learning at the organizational level. (For a survey, see the 1990 work of Linda Argote and Dennis Epple.) In that literature, learning is measured by data on the relationship between labor productivity at the organization level and the age or production experience of the organization. This literature identifies many instances of a very strong relationship between the labor productivity of a specific organization and its age or production experience.

We take a different approach for two reasons. One is that more comprehensive panel datasets on manufacturing plants do not reveal a strong systematic relationship between the labor productivity of these plants and their age. The other reason is that, in the context of models like ours, such a relationship has no bearing on the extent of learning.

In the data, a large dispersion in average productivity occurs across plants. However, average productivity does not seem to vary systematically with plant age. For example, Jensen, McGuckin, and Stiroh (2001) study a large panel of plants and find that once they include controls for labor quality and capital intensity, “surviving cohorts regardless of age or vintage show similar (labor) productivity levels” (331). Eric J. Bartelsman and Phoebus J. Dhrymes (1998) find similar results. Bahk and Gort (1993) run regressions of plant productivity on plant experience. Using gross sales as their measure of plant output, they find an economically small positive relationship between plant productivity and plant age. In particular, their regressions imply that labor productivity grows at 15 percent over the first 15 years of a plant's life. To see that this growth is economically small, note that over this 15-year period, the average surviving plant has employment and value added growing by roughly 500 percent. Moreover, even in Bahk and Gort's data, there may be no relationship between plant productivity and age: when Bahk and Gort use the theoretically

preferred value-added measure rather than gross output as a proxy for output, they find little relation between productivity and age.

Next we show that, consistent with the data, our model implies that there should be no systematic relation between the labor productivity of a plant and its age or production experience. The model has this implication regardless of the amount of learning assumed at the plant level. To show this, we imagine the results we would get if we applied Bahk and Gort's approach to measuring learning to data generated from our model. Specifically, Bahk and Gort run a regression of plant output on plant inputs and some measure of experience, and interpret the coefficient on the experience variable as measuring the extent of learning. Unfortunately, this approach is valid only if the movement in plants' inputs is essentially unrelated to their specific productivity. Theory, however, predicts precisely the opposite, as the following example makes clear.

Consider running Bahk and Gort's regression in a simplified version of our model. In this simplified model, let all plants be competitive and make a homogeneous final good ( $\theta = 1$ ). Let the output in plant  $i$  in period  $t$  be given by the production function  $q_{it} = z_t A_{it}^{1-\gamma} l_{it}^\gamma$ , so that relative employment in this plant is given by  $l_{it}/l_t = A_{it}/A_t$ , where  $l_t = \sum_i l_{it}$  is aggregate employment and  $A_t = \sum_i A_{it}$  is the aggregate of specific productivities of all plants. Hence, taking logs of the plant production function and substituting for  $A_{it}$  from  $l_{it}/l_t = A_{it}/A_t$  gives that, in equilibrium,

$$(7) \quad \log q_{it} = \log[z_t(A_t/l_t)^{1-\gamma}] + \log l_{it}.$$

We can use (7) to calculate the coefficients in the following regression, of the form used by Bahk and Gort:

$$\log q_{it} = \beta_{1t} + \beta_2 \log l_{it} + \beta_3 x_{it},$$

where  $x_{it}$  is some measure of the age or past production of the plant. This regression necessarily yields estimates of  $\beta_3 = 0$  along with  $\beta_{1t} = \log[z_t(A_t/l_t)^{1-\gamma}]$  and  $\beta_2 = 1$ . Bahk and Gort's interpretation of  $\beta_3 = 0$  would be that no learning takes place at the plant level regardless of how much specific productivity  $A_{it}$  rises with age.

Notice also that in the equilibrium of the model, (7) implies that labor productivity is given by  $q_{it}/l_{it} = z_t(A_t/l_t)^{1-\gamma}$  and, hence, is constant across all plants, regardless of their specific productivity  $A_{it}$ . This observation points to the key difference between the implications for learning by an individual and that of an organization, which can add variable factors. Individuals who learn increase their labor productivity. Organizations that learn grow by adding variable factors in order to keep their labor productivity constant (at least with Cobb-Douglas production). Hence, we argue that the key variable to look at to determine the amount of learning (that is, *built-up knowledge* or organization-specific capital) is not some measure of either labor or capital productivity, but rather some measure of relative size.

### C. Quantification

To derive our model's quantitative implications for the main features of transition to a new economy, we need to set both the macro and the micro parameters. In the model, a period is a year.

*Macro Parameters.*—The model's macro parameters are few and fairly standard to quantify. The growth rate of output per hour  $g$  and the depreciation rate  $\delta$  are chosen to reproduce data on the US manufacturing sector since World War II. We set  $g = 3.3$  percent to match the growth of manufacturing output per hour from 1949 to 1969. We let the plant-level production function be  $F(k, l) = k^\alpha l^{1-\alpha}$ . Because of imperfect competition, the share of GDP paid to physical capital is given by  $\theta\gamma\alpha$ . We use data for 1959–1999 obtained from the US Department of Commerce (various dates) national income and product accounts to set  $\theta\gamma\alpha = 19.9$  percent and  $\delta = 5.5$  percent, based on methodology described in our earlier work (Atkeson and Kehoe 2005). We set the discount factor  $\beta = 0.993$ , so that the steady-state interest rate  $i$  defined by  $1 + i = (1 + g)/\beta$  is 4.1 percent.

Now consider the parameter  $\nu = \gamma\theta$ . On the basis of the work of Susanto Basu and John G. Fernald (1995), Basu (1996), and Basu and

Miles S. Kimball (1997), we choose  $\theta = 0.9$ , which implies a markup of 11 percent and an elasticity of demand of 10. The span of control parameter  $\gamma$  measures the degree of diminishing returns in variable factors at the plant level. Hundreds of studies have estimated production functions with micro data. These analyses incorporate a wide variety of assumptions about the form of the production technology and draw on cross-sectional, panel, and time-series data from virtually every industry and developed country. Paul H. Douglas (1948) and Alan A. Walters (1963) survey many studies. More recent work along these lines has also been done by Martin Neil Baily, Charles Hulten, and David Campbell (1992), Bahk and Gort (1993), G. Steven Olley and Ariel Pakes (1996), and Bartelsman and Dhrymes (1998). This work finds that the returns to scale in production are fairly close to 1.0, with many of the estimates falling in the range from 0.9 to 1.0. We choose  $\gamma = 0.95$ . This makes  $\nu = 0.85$ . This value of  $\nu$  is consistent with the discussion of Atkeson, Aubhik Khan, and Lee Ohanian (1996). (As we report later, in Section IIIA, we did some sensitivity analysis with respect to  $\gamma$  and found that with  $\gamma = 0.9$  and  $\gamma = 1.0$ , we get similar results.)

*Micro Parameters.*—We use the method described in our 2005 work to set the micro parameters governing plant-specific productivity. We rewrite the model so that the problem of choosing the learning parameters governing plant-specific productivity is equivalent to directly choosing parameters governing shocks to size. We assume that the shocks to size have a lognormal distribution, so that  $\log \varepsilon_s \sim N(m_s, \sigma_s^2)$ . We choose the means and standard deviations of these distributions to be smoothly declining functions of  $s$ . In particular, we set  $m_s = \kappa_1 + \kappa_2(S - s/S)^2$  for  $s \leq S$  and  $m_s = \kappa_1$  otherwise, and  $\sigma_s = \kappa_3 + \kappa_4(S - s/S)^2$  for  $s \leq S$  and  $\sigma_s = \kappa_3$  otherwise. With this parameterization, the shocks for plants of age  $S$  or older are drawn from a single distribution. Thus, shocks to plant size are parameterized by  $\{\kappa_i\}_{i=1}^4$  and age  $S$ .

We choose the parameters governing these shocks so that the model matches data on the fraction of the labor force employed in plants of different age groups, as well as data on job creation and job destruction in plants of differ-

ent age groups. We use these job statistics to set the means and variances of shocks to productivity. The data are from the 1988 panel of the US Census Bureau LRD, which has the most extensive breakdown of plants by age available.

More formally, we use the relevant statistics defined by Steven J. Davis, John C. Haltiwanger, and Scott Schuh (1996): *employment* in a plant in year  $t$  is  $(l_t + l_{t-1})/2$ , where  $l_t$  is the labor force in year  $t$ ; *job creation* in a plant in year  $t$  is  $l_t - l_{t-1}$  if  $l_t \geq l_{t-1}$  and zero otherwise; *job destruction* in a plant in year  $t$  is  $l_{t-1} - l_t$  if  $l_t \leq l_{t-1}$  and zero otherwise. In Figure 4, we report for each age category these three statistics for US manufacturing plants in 1988 for all plants in that category relative to the total employment in all plants. This gives us a total of 26 statistics from the data that we use to summarize the life cycle of plants.

We set the parameter  $S = 150$  and choose the four parameters  $\{\kappa_i\}_{i=1}^4$  to minimize the sum of the squared errors between the corresponding 26 statistics computed from the model and those in the data. The resulting model statistics are also plotted in Figure 4. The parameters that generate these shocks are  $S = 150$ ,  $\kappa_1 = -0.1829$ ,  $\kappa_2 = 0.2520$ ,  $\kappa_3 = \exp(-1.7289)$ , and  $\kappa_4 = \exp(-7.0134)$ .

In Figure 4A, we see that our model matches the employment shares fairly well. In Figures 4B and 4C, we see that our model implies a bit more job creation and job destruction on average than are observed in the data. To get some perspective on this, note that the implied statistics for the overall job creation and destruction rates are 8.3 percent and 8.4 percent for the data and are both 9.7 percent for the model. Note also that in annual data during the 1972–1993 period, the standard deviations of the overall job creation and job destruction rates are 2.0 and 2.7 percentage points. Together, then, these data reveal that the overall job creation and job destruction rates in our model are reasonably good estimates—within one standard deviation—of the time-series fluctuations in these rates observed in the data.

### III. Reproducing the Transition after the Second Industrial Revolution

Now we ask whether our quantitative model, built to capture the historians' hypotheses about

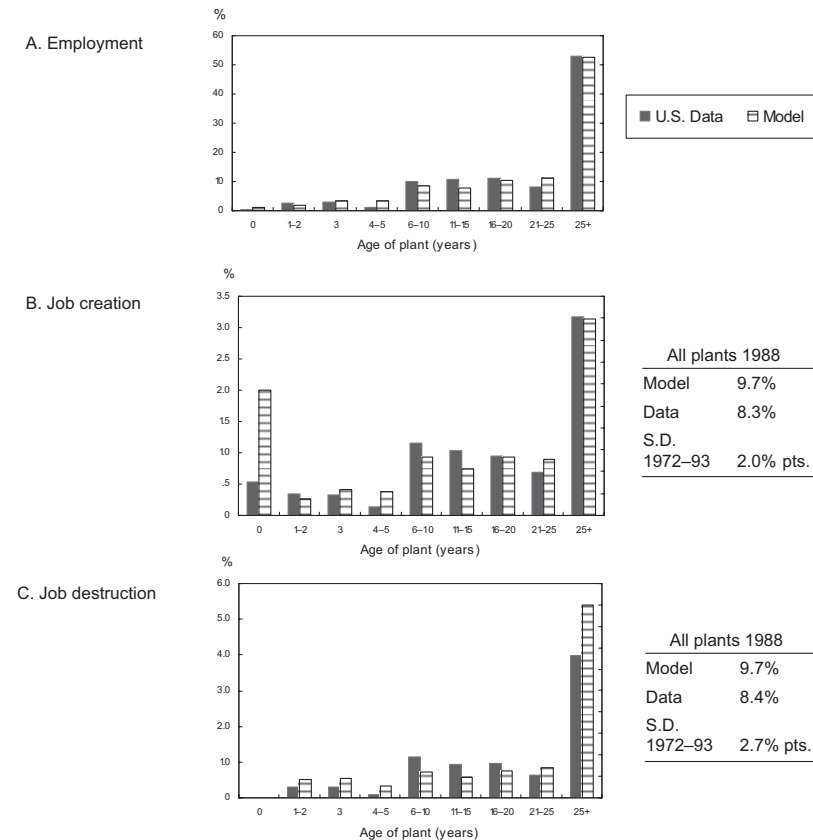


FIGURE 4. THE MODEL'S REPRODUCTION OF US DATA ON EMPLOYMENT, JOB CREATION, AND JOB DESTRUCTION  
*(Each statistic as a percentage of total US 1988 employment for manufacturing plants of various ages)*

Source: US Census Bureau 1988 Longitudinal Research Database.

the constraints facing US manufacturers in the Second Industrial Revolution, can reproduce the three main features of the transition after that revolution we documented in Section I. To answer this question, we use the model to simulate a transition to a new economy with a permanently faster pace of technical change, driven by faster growth in the frontier blueprints for new plants. In this simulation, the faster growth assigned to the frontier blueprints is meant to capture the faster pace of technical change embodied in US plant design after the development of electric power.

Our transition experiment is stark: we assume that the transition to a new economy starts with a sudden, unanticipated, and permanent increase

in the pace of embodied technical change. We make this assumption in order to give a stark picture of the transition dynamics implied by our model. We also view this assumption in the spirit of the work of historians Devine (1983), David (1990), David and Gavin Wright (1999), and others who document a substantial acceleration in the pace of technical change during the Second Industrial Revolution.

In this experiment, we find that the model reproduces the three main features of the transition after the Second Industrial Revolution very well. We follow that experiment with two others, designed to investigate whether the details of the learning process are key quantitatively in generating these results. We find that they are.

### A. The Transition Experiment

Again, we model the Second Industrial Revolution as a permanent increase in the pace of technical change. Specifically, consider an economy that is initially on a balanced growth path with steady growth in the frontier blueprints causing output per hour to grow 1.6 percent per year. This growth rate is the trend growth rate of output per hour in US manufacturing from 1869 to 1899. We denote this initial growth rate of the frontier blueprints by  $g_{\tau}^{old}$ . In our experiment, we suppose that at the beginning of the period labeled 1869, agents learn that the growth rate of the frontier blueprints increases once and for all, so that on the new balanced growth path, output per hour grows 3.3 percent per year (as in the US data for 1949–1969), an increase of 1.7 percentage points. We denote this new growth rate of the frontier blueprints by  $g_{\tau}^{new}$ . We refer to these two balanced growth paths as the *old economy* and the *new economy*, respectively. We then compute the transition path of our model economy from the old economy to the new economy in response to this exogenous increase in the pace of embodied technical change.

In our experiment, we must set some initial conditions. We set the initial physical capital-output ratio and the distribution of organization capital across plants to be those from the balanced growth path of the old economy. In setting this initial distribution of organization capital, we assume that the distributions of the shocks to specific productivity are the same as those we used to match the US micro data for 1988. Thus, in this experiment, the stochastic process for specific productivities is held fixed, whereas the growth rates of the frontier blueprints are varied. This amounts to assuming that the process of learning about any particular embodied technology does not depend on the rate at which new embodied technologies appear.

Now consider our model's implications for the three main features of the transition we documented in Section I: a productivity paradox, a slow diffusion of new technologies, and ongoing investment in old technologies.

Begin with the model's implications for the path of productivity, measured as output per hour. Figure 5 shows these implications for the

1869–1969 period, together with the actual data for this period (as seen in Figure 1). The model clearly produces a productivity paradox. In the model, as in the data, the growth in output per hour gradually accelerates. Over the 1869–1899 period, the trend growth rate in output per hour is 1.6 percent in both the model and the data. Over the 1899–1929 period, the trend growth rate in output per hour is 2.3 percent in the model and 2.6 percent in the data. In the model, as in the data, the growth rate in output per hour reaches its new steady state of 3.3 percent by the mid-1940s.

A convenient summary measure of the speed of transition in our model is the number of years the growth rate of output per hour takes to rise by one percentage point relative to the growth rate of the old economy. Here it takes 50 years.

Next, consider the model's implications for the diffusion of new technologies. Figure 6 shows this diffusion in the model and in the data during the 1869–1939 period. For new technologies, we make the following comparison between model and data. For the model, we graph the percentage of output produced in plants with blueprints dated 1869 and later. This percentage is also the percentage of physical capital and labor employed in plants with these blueprints. For the data, we graph the percentage of total horsepower in US manufacturing establishments provided by electric motors over the same period. In this comparison, we are assuming that, in the data, plants that are driven by electric motors were built in and after 1869 and those driven by steam and water were built before 1869. With this interpretation, our model predicts a slow pace of diffusion of new technologies quite similar to that for electric motors in the data. In the model, technologies dated 1869 and later take 46 years to diffuse to 50 percent; in the data, electric motors take about 50 years.

Of course, in measuring diffusion rates, the choice of initial dates in the data is somewhat arbitrary. To make a comparison of diffusion rates in the model and the data that is not so dependent on initial dates, consider a statistic that is often used in the diffusion literature: the time it takes for diffusion to go from 5 percent to 50 percent. This time is roughly 20 years (1899–1919) for electric motors in the data; it is 19 years for new technologies in the model.

FIGURES 5-7. The Model's Reproduction of the Gradual Transition to a New Economy

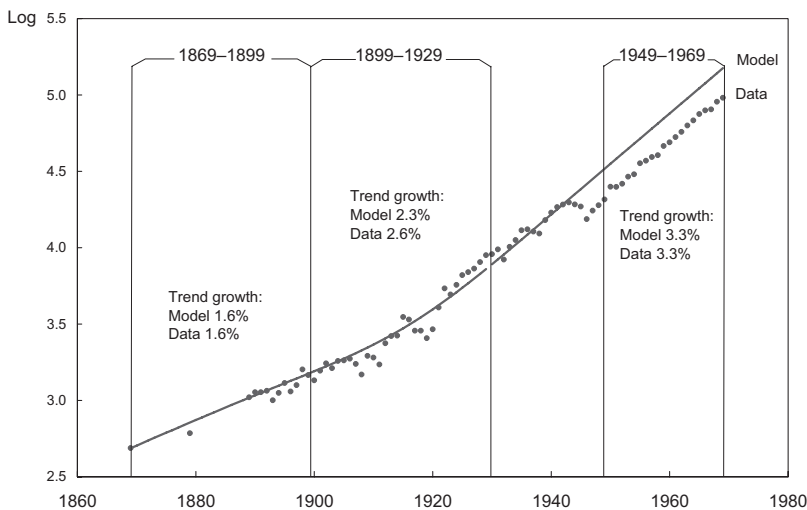


FIGURE 5. A SLOW INCREASE IN PRODUCTIVITY GROWTH ...  
(Log of output per hour and trend growth in manufacturing, 1869-1969, in the data and the model)

Source: US Department of Commerce (1973).

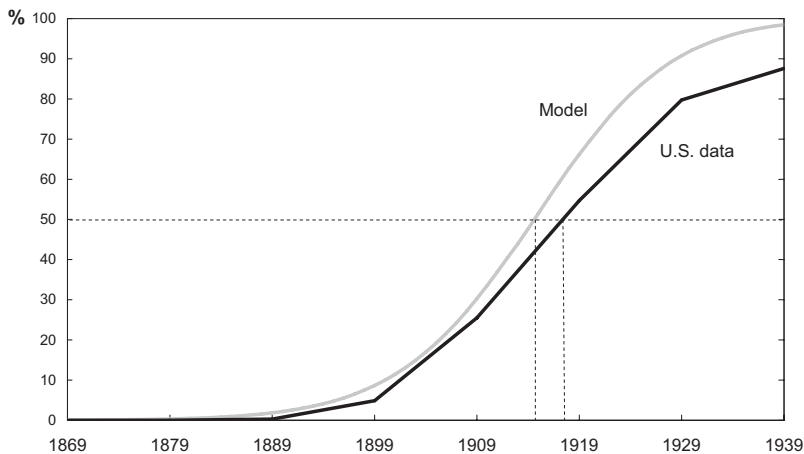


FIGURE 6. ... A SLOW DIFFUSION OF NEW TECHNOLOGY ...  
(Model's predicted % of output produced in plants with new blueprints (1869 and later) versus actual % of horsepower provided by electric motors in US manufacturing plants, 1869-1939)

Source: Devine (1983, 351, table 3).

Thus, either way we measure it, the diffusion in the model is similar to that in the data.

Note in Figure 6 that our model produces an S-shaped diffusion curve for new embodied technologies. It does so because of the hetero-

geneity across existing plants in the knowledge that they have built up about their old embodied technologies. Plants that have little such knowledge exit in favor of new plants early in the transition, while plants with substantial

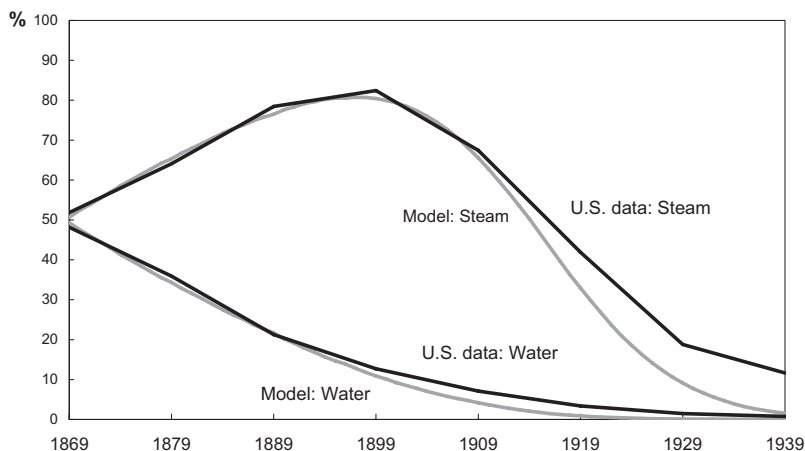


FIGURE 7. ... AND ONGOING INVESTMENT IN OLD TECHNOLOGIES  
*(Model's predicted % of output produced in plants with blueprints dated 1802–1869 (steam) and before 1802 (water) versus actual % of horsepower provided by steam and water power in US manufacturing plants, 1869–1939)*

Source: Devine (1983, 351, table 3).

knowledge exit only later in the transition. That the diffusion curve is S-shaped is a quantitative result. The shape of the curve reflects the distribution of knowledge across plants implied by the parameters of our learning process.

Finally, consider our model's implication for the extent of ongoing investment in old technologies. We have data on two old technologies, water and steam. So for the model, we consider two types of old technologies: those used in plants built before 1802, which we identify with waterpower, and those used in plants built between 1802 and 1869, which we identify with steam power. This dating of technologies in our model is consistent with the work of Attack, Bateman, and Weiss (1980). Their work suggests that the diffusion of steam power in the United States started some time between 1800 and 1810. We choose to date steam as starting in 1802 so that our model is consistent with the data on the diffusion of steam power in 1869. That is, in 1869, roughly 67 years after it began to diffuse, steam power accounts for 50 percent of output in the model and 50 percent of horsepower in the data.

In Figure 7, we graph our model's predictions for the percentages of output produced in plants using these old technologies from 1869 to 1939 implied by our dating scheme. We also repro-

duce the US data seen earlier, in Figure 2, on the fractions of horsepower derived from water and steam power over this same time period. Clearly, in those data the fraction derived from waterpower declined steadily from 1869 to 1939, while the fraction of horsepower derived from steam initially increased from 50 percent to 80 percent between 1869 and 1899 and then declined. Our model reproduces both these patterns very well.

These results imply that the model has considerable ongoing investment in old technologies for at least the first 30 years of the transition to a new economy. To understand this implication, note that in the model, by assumption, no new plants are built using either of the old technologies during this time period. Hence, all of the increase in output accounted for by these old technologies is coming from existing plants that are growing larger by adding capital and labor. This growth is driven by continued learning about these old technologies.

Most of the parameters of our model are standard. However, the span of control parameter,  $\gamma$ , and the parameters of the learning process are not. We ask, therefore, how sensitive our results are to these parameters.

We find that they are not very sensitive to the value of the span of control parameter. We redid



our transition experiments with  $\gamma = 0.9$  and  $\gamma = 1.0$  so that  $\nu = \gamma\theta$  equals 0.81 and 0.9, respectively. (Recall that our initial values were  $\gamma = 0.95$  and  $\nu = 0.85$ .) These changes led to only slight differences in the speed of transition. For example, with  $\gamma = 0.9$ , the transition is slightly faster: it takes 45 years instead of 50 years for the growth rate of output to increase one percentage point, and 41 years instead of 46 years for diffusion to reach 50 percent. With  $\gamma = 1$ , the transition is slightly slower: it takes 61 years before the growth rate of output increases one percentage point and 58 years for diffusion to reach 50 percent.

### B. Learning Experiments

Our model reproduces well the three main features of the transition to a new economy after the Second Industrial Revolution. We find this result remarkable because the parameters of the learning process were not chosen to match any of these three features. With our approach to measuring learning, we have found a learning process that is both substantial and protracted. Here, we conduct two experiments to determine whether this finding is key quantitatively in generating our results. We find that it is. In our first experiment, we consider a model in which, on average, there is no learning. In our second experiment, we consider a learning process suggested by other researchers on the basis of an alternative method for measuring learning. In neither of these experiments does our model reproduce the three main features of the transition.

In our first experiment, we set average learning to zero by setting the model's age-dependent means of the shocks to plant-specific productivity to one (which, with  $A' = A\varepsilon$ , sets the expected growth rate of  $A$  to zero). To get the transition to converge in this experiment, we increase the standard deviation of the productivity shocks by a factor of five.<sup>6</sup> With these parameters, the model's features of the transi-

tion to the new economy are quite different from those seen after the Second Industrial Revolution. Productivity and diffusion move swiftly instead of slowly, and there is no ongoing investment in old technologies. It takes just five years for the growth rate of output per hour to increase by one percentage point and only four years for technologies dated 1869 and later to diffuse to 50 percent. In this experiment, with our dating scheme, the percentage of output produced using old technologies corresponding to steam (those dated 1802–1869) starts at more than 99 percent at the beginning of the transition and falls to less than 1 percent over the next 30 years.

Now we turn to our second experiment. Recall that we follow Hopenhayn and Rogerson (1993) in using data on the size of US manufacturing plants over their life cycle to infer the learning process. With this procedure, we have found that learning is both substantial and protracted. Other researchers have not used these data to infer learning, but rather have inferred it by using regression estimates of the productivity of plants by age. (See, for example, the work of Jovanovic and Yaw Nyarko 1995; Hornstein and Krusell 1996; Thomas F. Cooley, Greenwood, and Yorukoglu 1997; and Greenwood and Yorukoglu 1997, who rely on estimates of productivity at the plant level made by Bahk and Gort 1993.) As we have discussed above, there is not much evidence of a systematic relationship between plant age and plant productivity. Hence, it is not surprising that the learning processes used by these researchers imply that learning is much less substantial and protracted than our procedure implies.

In our second experiment, we consider the implications of our model for transition when plants have the learning process discussed by Cooley, Greenwood, and Yorukoglu (1997). We do so by setting the age-dependent means so that, on average,  $A^{1-\nu}$  grows at 1 percent a year for the first 14 years and is then constant. (See the discussion of the Bahk-Gort learning process in the work of Cooley, Greenwood, and Yorukoglu 1997, 476.) Also, in order to get the transition to converge, we again increase the standard deviation of the productivity shocks by a factor of five. In this experiment, the model's transition to a new economy is also fast: it takes only eight years

<sup>6</sup> We need to increase the standard deviation in order to generate a smooth transition. If the standard deviation is too small, the distribution of organization capital across plants becomes lumpy during the transition, and that introduces oscillatory dynamics.

for the growth rate of output per hour to increase by one percentage point and only six years for technologies dated 1869 and later to diffuse to 50 percent. The percentage of output produced using old technologies corresponding to steam also starts at more than 99 percent at the beginning of the transition and falls to less than 1 percent over the next 30 years.

The results of both of these experiments are consistent with the idea that the details of our particular learning process are primarily responsible for this particular model's ability to reproduce the main features of the transition to a new economy after the Second Industrial Revolution.

#### IV. Lessons for Other Technological Revolutions

We have built an abstract model of transition that can be applied to a variety of technological revolutions. To apply our model to the transition after the Second Industrial Revolution, we used data on growth rates in the late 1800s to set initial conditions and data on manufacturing plants to set the parameters of the learning process. We found that, with these initial conditions and this learning process, our model could reproduce the transition after the Second Industrial Revolution remarkably well.

David (1990, 1991) and others have argued that the transition after that revolution is a useful paradigm for guiding research on the study of the transition following the more recent IT Revolution. Here we examine what our model can tell us about that idea. Basically, we learn that it is questionable. Instead, the model suggests that the features of a transition after any technological revolution depend on the historical context in which the revolution occurs.

To begin our analysis of the IT Revolution, we discuss how to reinterpret the elements of our model so that it might be applied to that revolution. Here we follow David (1990), Bresnahan, Brynjolfsson, and Hitt (2002), Brynjolfsson, Hitt, and Shinkyu Yang (2002), and others in shifting our interpretation of the basic unit of production from a manufacturing plant to a business organization and our interpretation of blueprints from new manufacturing technologies based on electricity to new business practices based on information technology.

While the two revolutions clearly have some qualitative parallels, they are also likely to have some quantitative differences that will shape the nature of their particular transition to a new economy. Specifically, our model predicts a slow transition after a technological revolution only if agents have accumulated a large stock of *built-up knowledge* of old technologies before the transition begins. For the Second Industrial Revolution, we argued, agents did have a large stock of built-up knowledge about plants based on steam and waterpower. For the IT Revolution, then, our model will likely predict a slow transition only if, at the start of that revolution, agents had a large stock of built-up knowledge about business practices based on old information technologies.

Due to the lack of adequate data about the IT Revolution, we cannot use our model to evaluate that period in the same way we did the earlier period. Instead, we conduct two experiments with our model to examine which factors determine the extent of built-up knowledge in equilibrium. In the first experiment, we learn that the faster the pace of technical change in the old economy, the smaller is the extent of built-up knowledge and, hence, the faster the transition after a technological revolution. In the second experiment, we learn that the more substantial and protracted the learning process, the larger is the extent of built-up knowledge and the slower the transition after a technological revolution.

Our experiments suggest, then, that the extent to which the transition after the Second Industrial Revolution is a paradigm for the transition after the IT Revolution depends heavily on the extent of knowledge about business practices that business organizations had built up before the IT Revolution. Currently there is little direct evidence on the extent of that built-up knowledge. Our model does, however, suggest data from which it might be measured.

##### A. Reinterpreting the Model

Our model can be reinterpreted for the IT Revolution by shifting the basic unit of production from a manufacturing plant to a business organization. We assume that each new business organization starts with a set of business practices that embody the current frontier of such practices and then learns to become more

productive with these practices over time. Specifically, we reinterpret our three main technological assumptions as follows:

- *New business organizations embody new business practices.* This assumption is motivated by the work of Bresnahan, Brynjolfsson, and Hitt (2002) and Brynjolfsson, Hitt, and Yang (2002), who argue that the effective use of new information technology requires a redesign of the business organization.
- *Improvements in the design of business practices are ongoing.* This assumption is motivated by the observation that increases in computing and networking capability have led to an increasing array of new types of business practices and is consistent with the observation of Michael S. Scott Morton (1991).
- *New organizations improve their practices through a period of learning.* This assumption is consistent with the work of Brynjolfsson, Amy Austin Renshaw, and Marshall Van Alstyne (1997) and Brynjolfsson, Hitt, and Yang (2002), who argue that the process of improving an organization structure may involve a protracted period of learning before the payoffs from this investment are fully realized.

### B. The Transition Experiments

We now conduct two experiments to investigate how important the stock of built-up knowledge is for the speed of transition and how this stock varies with the model parameters.

*A First Experiment.*—Our first experiment demonstrates how our model's implications for the three main features of transition depend on the initial pace of technical change and, hence, the growth rate in the old economy. We then explain that this dependency arises because the stock of built-up knowledge varies with the pace of technical change.

In the experiment, we simulate the model repeatedly, varying the growth rate in the old economy, but holding fixed the assumption that growth is 1.7 percentage points higher in the new economy than in the old. Each time, we also hold fixed all other parameters of the model, including the

learning parameters. Implicitly, here we are assuming that the learning process is the same as we found for manufacturing plants.

We summarize the results of these simulations in Figure 8A. This figure shows the number of years that pass before the growth of measured productivity has risen by one percentage point, as well as the number of years until technologies that are new at the start of the transition have diffused to 50 percent. Clearly, as the growth rate in the old economy increases, two of the key features of the transition after the Second Industrial Revolution disappear: the extent of the productivity paradox decreases, and new technologies diffuse more rapidly.

The third feature disappears as well: according to the model, as the initial growth rate in the old economy increases, less ongoing investment in old technologies occurs during the transition to a new economy. Recall that after the Second Industrial Revolution, the percentage of output produced using old technologies corresponding to steam power rose from 50 percent to 80 percent in the first 30 years of the transition. Here, to make our analysis of old technologies parallel to that of steam after the Second Industrial Revolution, we report on the percentage of output produced using technologies that are up to 67 years old at the start of each simulated transition, as well as the fraction of output produced using these same technologies 30 years later. The model implies that when the initial growth rate is 1.5 percent, the percentage of output accounted for by old technologies rises from 42 percent to 78 percent in the first 30 years of transition. In contrast, when the initial growth rate is 3.5 percent, the percentage of output accounted for by old technologies falls from 97 percent to 1 percent in the first 30 years of transition.

Why does the model produce such different results for these transitions, when all that differs is the economy's initial growth rate? The answer lies in the extent of built-up knowledge that exists in the old economy. In the model, as we increase the initial growth rate, the diffusion rate of new technologies in the old economy also increases. Hence, the stock of built-up knowledge that agents have about existing technologies in the old economy naturally decreases. With less built-up

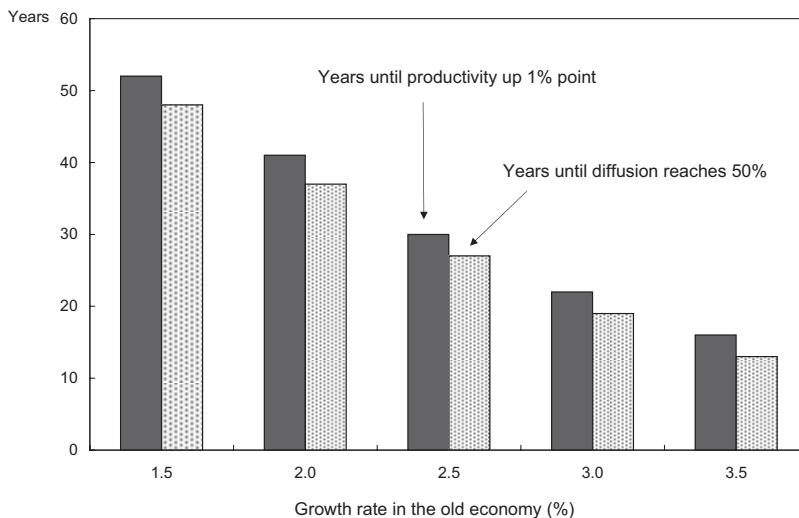
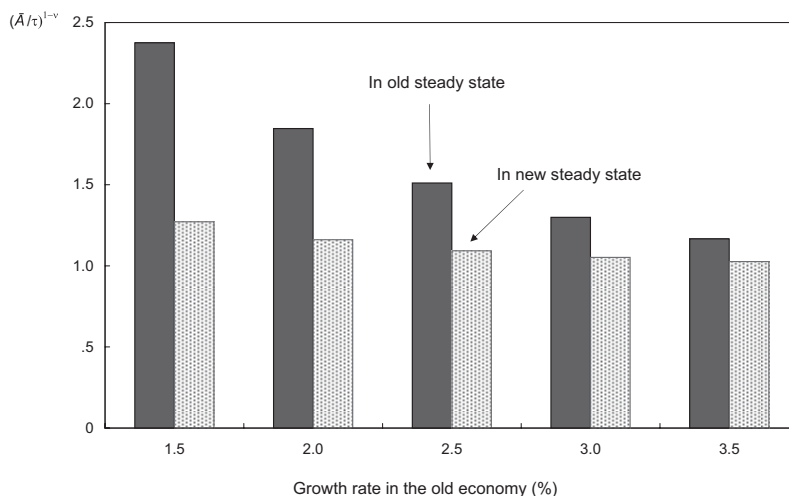


FIGURE 8. INITIAL GROWTH RATES MATTER

A. FOR THE SPEED OF TRANSITION ...

(Model's predictions, with various initial steady-state growth rates, for the time until productivity growth increases 1% point and the time until diffusion reaches 50%)



B. ... AND THE STOCK OF BUILT-UP KNOWLEDGE

(Model's predictions, with various initial steady-state growth rates, for the amount of built-up knowledge,  $(\bar{A}/\tau)^{1-\nu}$ , in the old and new steady states)

knowledge at the start of the transition, agents are more willing to abandon old technologies in favor of new ones.

In our model, the stock of built-up knowledge is characterized by the distribution of organization capital across productive units. A convenient aggregate measure of this stock of built-up

knowledge, relative to the frontier blueprints, is  $(\bar{A}/\tau)^{1-\nu}$ . Note that the ratio  $\bar{A}/\tau$  is the average of the specific productivity across productive units relative to the frontier blueprints available to new productive units. The exponent  $1 - \nu$  expresses this ratio in units of the Solow residual of a standard growth model.

How this ratio changes with growth rates can be demonstrated by the model. For example, in our transition experiment corresponding to the Second Industrial Revolution, this ratio was 2.23 in the old economy and only 1.25 in the new. Thus, built-up knowledge was nearly 80 percent higher in the old economy than in the new. In that transition, the initial growth rate in the old economy was 1.6 percent. In contrast, suppose that the initial growth rate had been 3.5 percent. Then, the model implies that these ratios would have been 1.17 in the old economy and 1.03 in the new, so that built-up knowledge would have been only about 14 percent higher in the old economy than in the new.

More generally, Figure 8B shows the model's predictions for the stock of built-up knowledge in the old and new economies as a function of the growth rate in the old economy. Note that the stock of built-up knowledge in both economies declines as the growth rate in the old economy rises. Comparing Figures 8B and 8A, then, we see the close link between the stock of built-up knowledge and the subsequent speed of transition.

*A Second Experiment.*—Our first experiment thus indicates that our model does not produce a slow transition after a technological revolution unless agents have a large amount of built-up knowledge about old technologies at the start of the transition. It further indicates that an economy does not have much built-up knowledge if the initial growth rate is fast. We now find that in order to get a slow transition when the initial growth rate is high, we need learning to be extremely substantial and protracted, much more so, for example, than we found from data on US manufacturing plants in 1988.

To demonstrate this point, we conduct a final transition experiment in which we increase the amount of learning in organizations by increasing the means of the idiosyncratic shocks to organization-specific productivity by a constant factor independent of age. Recall that these shocks have a lognormal distribution, so that  $\log \varepsilon_s \sim N(m_s, \sigma_s^2)$ . Specifically, we increase the mean of these shocks to  $m'_s = m_s + \Delta$  with  $\Delta = 0.1133$ . With this change in parameters, the learning process is much more substantial and protracted than that seen in data on US manufacturing plants.

With this change in the learning process, we conduct the following transition experiment. We suppose that the old economy starts with a relatively high growth rate of 3.3 percent and then agents suddenly learn that the growth of frontier blueprints has increased once and for all, so that the economy grows 5 percent per year on the new balanced growth path. The transition in this experiment is now very similar to the one we found after the Second Industrial Revolution: it takes 49 years for the growth rate of output per hour to rise one percentage point and 46 years for new technologies to diffuse to 50 percent. In terms of ongoing investment in old technologies, we find that technologies up to 67 years old account for 51 percent of output at the start of the transition and that these same technologies account for 81 percent of output 30 years later.

*Inferring the Extent of Built-Up Knowledge.*—By the preceding experiments, we have shown that, in our model, the extent of built-up knowledge is critical for generating a slow transition and that this extent of knowledge varies with the initial growth rate assumed in the old economy. While we cannot yet measure built-up knowledge directly, we can ask what variables in the model vary with the initial growth rate and how these variables might be used to infer the existing extent of built-up knowledge. Theory suggests that two variables in the old economy are particularly relevant: the speed of the diffusion of technologies and the life cycle of the relevant productive units (plants or business organizations).

In our model, the speed of diffusion of technologies in the old economy, before the transition even begins, increases with the initial growth rate. For example, in our model, in the old economy, technologies take 72 years to diffuse to 50 percent if the initial growth rate is 1.5 percent, but only 21 years if the initial growth rate is 3.5 percent. In our Second Industrial Revolution experiment, the growth rate in the old economy is 1.6 percent, and in that old economy, technologies take 67 years to diffuse to 50 percent. This slow diffusion of steam is consistent with the work of Attack, Bateman, and Weiss (1980), who suggest that steam took roughly 70 years to diffuse to 50 percent. In the context of our model, this slow diffusion implies that agents had built up a large stock of

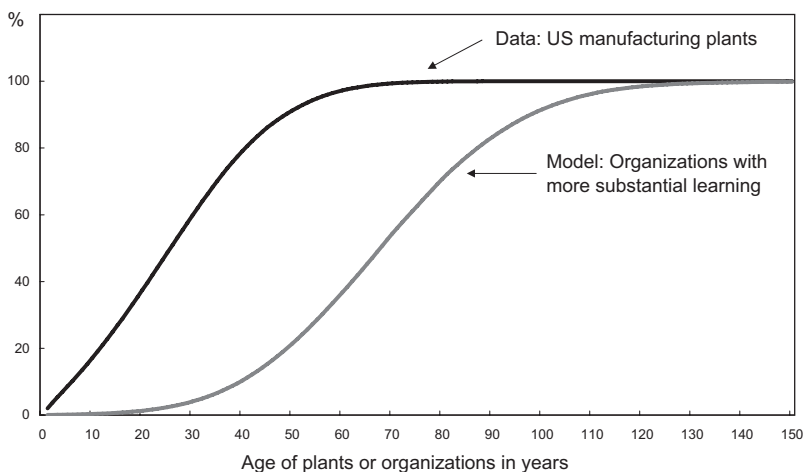


FIGURE 9. THE DISTRIBUTION OF EMPLOYMENT WITH MORE SUBSTANTIAL LEARNING (Cumulative distribution of employment by age of plants or organizations: Models predicted for organizations with substantial and protracted learning versus actual data for US manufacturing plants in 1988)

Source: US Census Bureau 1988 Longitudinal Research Database.

knowledge about old technologies before the Second Industrial Revolution.

In our model, the life cycle of productive units in the old economy also varies with the initial growth rate. As the growth rate in the old economy increases, the fraction of the labor force employed in productive units with older technologies shrinks and the fraction employed in those with the newest technology increases. For example, in our simulations underlying Figure 8, in the old economy, when the initial growth rate is 1.5 percent, over 98 percent of the labor force is employed in productive units at least 25 years old and only 0.02 percent in those using the newest technologies. In contrast, when the initial growth rate is 3.5 percent, 45 percent of the labor force is employed in productive units at least 25 years old and 2.8 percent in those using the newest technologies. (In terms of entry and exit, note that the fraction employed with the newest technology is the employment-weighted rate, which, at least along a balanced growth path, is also the employment-weighted exit rate.)

In our second learning experiment, we found that our model could generate a slow transition starting from a high initial growth rate, if learning is much more substantial and protracted

than we found for US manufacturing plants. To give a feel for the implications of the learning process we discussed above (where we increased the mean of these shocks by  $\Delta = 0.1133$ ), in Figure 9 we show the distribution of employment across productive units of different ages implied by the model at the start of that transition, along with the actual data for US manufacturing plants. We see in this figure that, in the model, employment is concentrated in productive units using very old technologies. Here, over 50 percent of employment is in productive units that use technologies that are at least 67 years old. This is clearly not consistent with the learning process measured at US plants in 1988. Moreover, the model's relatively more substantial and protracted learning process implies a very slow diffusion rate of new technologies: it takes 67 years for a new technology to diffuse to 50 percent.

These results indicate a final lesson from our model. The transition to a new economy after the Second Industrial Revolution can legitimately be viewed as a paradigm for the transition after the IT Revolution only if, before the revolution, organizations had substantially more built-up knowledge about business practices than manufacturing plants had about production

processes in the recent data. That level of built-up knowledge would correspond to a life cycle of business practices much longer than the life cycle of US manufacturing plants.

### V. Conclusion

Many historians and economists view the period after the Second Industrial Revolution as a paradigmatic example of a slow transition to a new economy after a technological revolution. We have presented a quantitative model of that transition, which generates what many see as the three main features of that paradigm: a productivity paradox, a slow diffusion of old technologies, and ongoing investment in old technologies after the revolution. We find that two characteristics of the model are particularly important in generating this result: learning must be substantial and protracted, and built-up knowledge in the old economy must be large. We use data on the life cycle of US manufacturing plants to argue that learning about plant-specific technologies is indeed substantial and protracted. And we point to the slow diffusion of steam before the Second Industrial Revolution as indirect evidence consistent with the historians' claim that manufacturers had built up a large stock of knowledge with existing technologies before that revolution.

The paradigm may not fit all transitions, however. We are not able to apply the model in the same way to the effects of the more recent IT Revolution because of the lack of data needed to measure learning and built-up knowledge in business organizations, the type of productive unit that faced the choice of adopting the new technology. But our model has provided some insight into how the recent transition may differ from that after the Second Industrial Revolution. Our experiments suggest that a transition to a new economy after a major, sustained increase in the pace of technical change will not always be slow, as it was after the Second Industrial Revolution. The speed of the transition will depend on the existing pace of technical change. When that pace is quite fast, the transition will be also.

Clearly, then, no simple analogy exists between the transition after the Second Industrial Revolution and the transition that we should expect after the IT Revolution. Instead, the main

lesson from this analysis is that the nature of the transition after any technological revolution depends in an important way on its historical context. The Second Industrial Revolution happened to come at a time when the pace of embodied technical change was relatively slow.

Of course, before any definitive analysis of the impact of the IT Revolution can be fleshed out in a quantitative model such as ours, some questions must be answered. Where are the new technologies embodied? How long is the period of learning after they are adopted? And how much built-up knowledge do existing organizations have with their current technologies? (For discussion of these questions, see the work of Brynjolfsson and Hitt 2000.) With regard to information technologies, questions like these are not easy to answer quantitatively, but we have suggested how theory can be used to guide the search for these answers.

### REFERENCES

- Aghion, Philippe, and Peter Howitt.** 1998. *Endogenous Growth Theory*. Cambridge, MA, and London: MIT Press.
- Argote, Linda, and Dennis Epple.** 1990. "Learning Curves in Manufacturing." *Science*, 247(4945): 920–24.
- Atack, Jeremy, Fred Bateman, and Thomas Weiss.** 1980. "The Regional Diffusion and Adoption of the Steam Engine in American Manufacturing." *Journal of Economic History*, 40(2): 281–308.
- Atkeson, Andrew, and Patrick J. Kehoe.** 2001. "The Transition to a New Economy after the Second Industrial Revolution." National Bureau of Economic Research Working Paper 8676.
- Atkeson, Andrew, and Patrick J. Kehoe.** 2005. "Modeling and Measuring Organization Capital." *Journal of Political Economy*, 113(5): 1026–53.
- Atkeson, Andrew, Aubhik Khan, and Lee Ohanian.** 1996. "Are Data on Industry Evolution and Gross Job Turnover Relevant for Macroeconomics?" *Carnegie-Rochester Conference Series on Public Policy*, 44: 216–50.
- Bahk, Byong-Hong, and Michael Gort.** 1993. "Decomposing Learning by Doing in New Plants." *Journal of Political Economy*, 101(4): 561–83.

- Baily, Martin Neil, Charles Hulten, and David Campbell.** 1992. "Productivity Dynamics in Manufacturing Plants." *Brookings Papers on Economic Activity, Microeconomics*: 187–249.
- Bartelsman, Eric J., and Phoebus J. Dhrymes.** 1998. "Productivity Dynamics: U.S. Manufacturing Plants, 1972–1986." *Journal of Productivity Analysis*, 9(1): 5–34.
- Basu, Susanto.** 1996. "Procyclical Productivity: Increasing Returns or Cyclical Utilization?" *Quarterly Journal of Economics*, 111(3): 719–51.
- Basu, Susanto, and John G. Fernald.** 1995. "Are Apparent Productive Spillovers a Figment of Specification Error?" *Journal of Monetary Economics*, 36(1): 165–88.
- Basu, Susanto, and Miles S. Kimball.** 1997. "Cyclical Productivity with Unobserved Input Variation." National Bureau of Economic Research Working Paper 5915.
- Bresnahan, Timothy F., Erik Brynjolfsson, and Lorin M. Hitt.** 2002. "Information Technology, Workplace Organization, and the Demand for Skilled Labor: Firm-Level Evidence." *Quarterly Journal of Economics*, 117(1): 339–76.
- Brynjolfsson, Erik, and Lorin M. Hitt.** 2000. "Beyond Computation: Information Technology, Organizational Transformation and Business Performance." *Journal of Economic Perspectives*, 14(4): 23–48.
- Brynjolfsson, Erik, Lorin M. Hitt, and Shinkyu Yang.** 2002. "Intangible Assets: Computers and Organizational Capital." *Brookings Papers on Economic Activity*, 1: 137–81.
- Brynjolfsson, Erik, Amy Austin Renshaw, and Marshall Van Alstyne.** 1997. "The Matrix of Change: A Tool for Business Process Re-engineering." *Sloan Management Review*, 38(2): 37–54.
- Chandler, Alfred D.** 1992. "Organizational Capabilities and the Economic History of the Industrial Enterprise." *Journal of Economic Perspectives*, 6(3): 79–100.
- Chari, V. V., and Hugo Hopenhayn.** 1991. "Vintage Human Capital, Growth, and the Diffusion of New Technology." *Journal of Political Economy*, 99(6): 1142–65.
- Cooley, Thomas F., Jeremy Greenwood, and Mehmet Yorukoglu.** 1997. "The Replacement Problem." *Journal of Monetary Economics*, 40(3): 457–99.
- David, Paul A.** 1990. "The Dynamo and the Computer: An Historical Perspective on the Modern Productivity Paradox." *American Economic Review*, 80(2): 355–61.
- David, Paul A.** 1991. "Computer and Dynamo: The Modern Productivity Paradox in a Not-Too Distant Mirror." In *Technology and Productivity: The Challenge for Economic Policy*, 315–45. Paris: Organisation for Economic Co-operation and Development.
- David, Paul A., and Gavin Wright.** 1999. "General Purpose Technologies and Surges in Productivity: Historical Reflections on the Future of the ICT Revolution." Stanford University Department of Economics Working Paper 99-026.
- Davis, Steven J., John C. Haltiwanger, and Scott Schuh.** 1996. *Job Creation and Destruction*. Cambridge, MA, and London: MIT Press.
- Devine, Warren D., Jr.** 1983. "From Shafts to Wires: Historical Perspective on Electrification." *Journal of Economic History*, 43(2): 347–72.
- Devine, Warren D., Jr.** 1990. "Electricity in Information Management: The Evolution of Electronic Control." In *Electricity in the American Economy: Agent of Technological Progress*, ed. Sam H. Schurr, Calvin C. Burwell, Warren D. Devine, Jr., and Sidney Sonenblum, 43–70. Westport: Greenwood Press.
- Douglas, Paul H.** 1948. "Are There Laws of Production?" *American Economic Review*, 38(1): 1–41.
- Gordon, Robert J.** 2000a. "Does the 'New Economy' Measure up to the Great Inventions of the Past?" *Journal of Economic Perspectives*, 14(4): 49–74.
- Gordon, Robert J.** 2000b. "Interpreting the 'One Big Wave' in U.S. Long-Term Productivity Growth." In *Productivity, Technology and Economic Growth*, ed. Bart van Ark, Simon K. Kuipers, and Gerard H. Kuper, 19–65. Boston, Dordrecht, and London: Kluwer Academic.
- Greenwood, Jeremy, and Mehmet Yorukoglu.** 1997. "1974." *Carnegie-Rochester Conference Series on Public Policy*, 46: 49–95.
- Helpman, Elhanan, and Manuel Trajtenberg.** 1998. "Diffusion of General Purpose Technologies." In *General Purpose Technologies and Economic Growth*, ed. Elhanan Help-



- man, 85–119. Cambridge, MA, and London: MIT Press.
- Hopenhayn, Hugo, and Richard Rogerson.** 1993. “Job Turnover and Policy Evaluation: A General Equilibrium Analysis.” *Journal of Political Economy*, 101(5): 915–38.
- Hornstein, Andreas, and Per Krusell.** 1996. “Can Technology Improvements Cause Productivity Slowdowns?” In *NBER Macroeconomics Annual 1996*, ed. Ben S. Bernanke and Julio J. Rotemberg, 209–59. Cambridge, MA, and London: MIT Press.
- Jensen, J. Bradford, Robert H. McGuckin, and Kevin J. Stiroh.** 2001. “The Impact of Vintage and Survival on Productivity: Evidence from Cohorts of U.S. Manufacturing Plants.” *Review of Economics and Statistics*, 83(2): 323–32.
- Jovanovic, Boyan, and Saul Lach.** 1989. “Entry, Exit, and Diffusion with Learning by Doing.” *American Economic Review*, 79(4): 690–99.
- Jovanovic, Boyan, and Yaw Nyarko.** 1995. “A Bayesian Learning Model Fitted to a Variety of Empirical Learning Curves.” *Brookings Papers on Economic Activity, Microeconomics*: 247–99.
- Jovanovic, Boyan, and Peter L. Rousseau.** 2005. “General Purpose Technologies.” National Bureau of Economic Research Working Paper 11093.
- Laitner, John, and Dmitriy L. Stolyarov.** 2003. “Technological Change and the Stock Market.” *American Economic Review*, 93(4): 1240–67.
- Lucas, Robert E., Jr.** 1978. “On the Size Distribution of Business Firms.” *Bell Journal of Economics*, 9(2): 508–23.
- Olley, G. Steven, and Ariel Pakes.** 1996. “The Dynamics of Productivity in the Telecommunications Equipment Industry.” *Econometrica*, 64(6): 1263–97.
- Rosenberg, Nathan.** 1976. “On Technological Expectations.” *Economic Journal*, 86(343): 523–35.
- Sands, Saul S.** 1961. “Changes in Scale of Production in United States Manufacturing Industry, 1904–1947.” *Review of Economics and Statistics*, 43(4): 365–68.
- Schurr, Sam H., Calvin C. Burwell, Warren D. Devine, Jr., and Sidney Sonenblum.** 1990. *Electricity in the American Economy: Agent of Technological Progress*. Westport: Greenwood Press.
- Schurr, Sam H., Bruce C. Netschert, Vera Eliasberg, Joseph Lerner, and Hans H. Landsberg.** 1960. *Energy in the American Economy, 1850–1975: An Economic Study of Its History and Prospects*. Baltimore: Johns Hopkins University Press.
- Scott Morton, Michael S.** 1991. *The Corporation of the 1990s: Information Technology and Organizational Transformation*. Oxford and New York: Oxford University Press.
- Sonenblum, Sidney.** 1990. “Electrification and Productivity Growth in Manufacturing.” In *Electricity in the American Economy: Agent of Technological Progress*, ed. Sam H. Schurr, Calvin C. Burwell, Warren D. Devine, Jr., and Sidney Sonenblum. Westport: Greenwood Press.
- U.S. Department of Commerce, Bureau of Economic Analysis.** 1973. *Long-Term Economic Growth, 1860–1970*. Washington, DC: Bureau of Economic Analysis.
- U.S. Department of Commerce, Bureau of Economic Analysis.** Various dates. “National Income and Product Accounts of the United States.” In *Survey of Current Business*. Washington, DC: Bureau of Economic Analysis.
- Walters, Alan A.** 1963. “Production and Cost Functions: An Econometric Survey.” *Econometrica*, 31(1/2): 1–66.

**This article has been cited by:**

1. Karolina Safarzyńska, Jeroen C.J.M. van den Bergh. 2018. A higher rebound effect under bounded rationality: Interactions between car mobility and electricity generation. *Energy Economics* **74**, 179-196. [[Crossref](#)]
2. Keigo Nishida. 2018. ENDOGENOUS CYCLES IN A SIMPLE MODEL WITH LAGGED EXTERNALITIES ON PRODUCTIVITY. *Bulletin of Economic Research* **97**. . [[Crossref](#)]
3. Sang-Chul Yoon. 2018. Servicization with skill premium in the digital economy. *Journal of Korea Trade* **22**:1, 17-35. [[Crossref](#)]
4. Matt Wimble, Harinder Singh, Brandis Phillips. 2018. Understanding Cross-Level Interactions of Firm-Level Information Technology and Industry Environment. *Information Resources Management Journal* **31**:1, 1-20. [[Crossref](#)]
5. Matt Wimble, Harinder Singh, Brandis Phillips. 2017. A Multilevel Model of Information Technology Value. *Journal of Computer Information Systems* **57**:3, 201-207. [[Crossref](#)]
6. William S. Bainbridge, Mihail C. Roco. 2016. Science and technology convergence: with emphasis for nanotechnology-inspired convergence. *Journal of Nanoparticle Research* **18**:7. . [[Crossref](#)]
7. Paul Frijters, Nemanja Antić. 2016. Can collapsing business networks explain economic downturns?. *Economic Modelling* **54**, 289-308. [[Crossref](#)]
8. Jeffery Reinking, Vicky Arnold, Steve G. Sutton. 2015. Antecedents and Consequences of Early Adoption of Emergent Technologies: The IT Revolution. *Journal of Emerging Technologies in Accounting* **12**:1, 51-70. [[Crossref](#)]
9. Milan Zafirovski. 2015. Toward Economic Sociology/Socio-Economics? Sociological Components in Contemporary Economics and Implications for Sociology. *The American Sociologist* . [[Crossref](#)]
10. Jean-François Mercure. 2015. An age structured demographic theory of technological change. *Journal of Evolutionary Economics* **25**:4, 787-820. [[Crossref](#)]
11. Christopher M. Gunn. 2015. Animal spirits as an engine of boom-busts and throttle of productivity growth. *Journal of Economic Dynamics and Control* **57**, 24-53. [[Crossref](#)]
12. Bruno Aguilera-Barchet. The Triumph of the State Over the Nation: From Totalitarianism to Interventionism 555-644. [[Crossref](#)]
13. Fernando del Rio, Antonio Sampayo. 2014. Obsolescence and productivity. *Portuguese Economic Journal* **13**:3, 195-216. [[Crossref](#)]
14. Ramana Nanda, Tom Nicholas. 2014. Did bank distress stifle innovation during the Great Depression?. *Journal of Financial Economics* **114**:2, 273-292. [[Crossref](#)]
15. George Alessandria, Horag Choi. 2014. Establishment heterogeneity, exporter dynamics, and the effects of trade liberalization. *Journal of International Economics* **94**:2, 207-223. [[Crossref](#)]
16. Benjamin Moll. 2014. Productivity Losses from Financial Frictions: Can Self-Financing Undo Capital Misallocation?. *American Economic Review* **104**:10, 3186-3221. [[Abstract](#)] [[View PDF article](#)] [[PDF with links](#)]
17. Jason N. Brock, R. Emmett Sullivan. New Technologies, Communication, and Mass Consumption 170-189. [[Crossref](#)]
18. Rodolfo E. Manuelli, Ananth Seshadri. 2014. Frictionless Technology Diffusion: The Case of Tractors. *American Economic Review* **104**:4, 1368-1391. [[Abstract](#)] [[View PDF article](#)] [[PDF with links](#)]
19. Virgiliu Midrigan, Daniel Yi Xu. 2014. Finance and Misallocation: Evidence from Plant-Level Data. *American Economic Review* **104**:2, 422-458. [[Abstract](#)] [[View PDF article](#)] [[PDF with links](#)]

20. Supriyo De. 2013. Intangible capital and growth in the 'new economy': Implications of a multi-sector endogenous growth model. *Structural Change and Economic Dynamics* . [[Crossref](#)]
21. Michaël Aklin, Johannes Urpelainen. 2013. Political Competition, Path Dependence, and the Strategy of Sustainable Energy Transitions. *American Journal of Political Science* no-no. [[Crossref](#)]
22. Karen A. Murdock. 2012. Entrepreneurship policy: Trade-offs and impact in the EU. *Entrepreneurship & Regional Development* 24:9-10, 879-893. [[Crossref](#)]
23. Karolina Safarzyńska. 2012. Modeling the rebound effect in two manufacturing industries. *Technological Forecasting and Social Change* 79:6, 1135-1154. [[Crossref](#)]
24. Karolina Safarzyńska, Koen Frenken, Jeroen C.J.M. van den Bergh. 2012. Evolutionary theorizing and modeling of sustainability transitions. *Research Policy* 41:6, 1011-1024. [[Crossref](#)]
25. Pablo N. D'Erasmus, Hernan J. Moscoso Boedo. 2012. Financial structure, informality and development. *Journal of Monetary Economics* . [[Crossref](#)]
26. TOM NICHOLAS. 2011. Did R&D Firms Used to Patent? Evidence from the First Innovation Surveys. *The Journal of Economic History* 71:04, 1032-1059. [[Crossref](#)]
27. Karolina Safarzyńska, Jeroen C.J.M. van den Bergh. 2011. Industry evolution, rational agents and the transition to sustainable electricity production. *Energy Policy* 39:10, 6440-6452. [[Crossref](#)]
28. HUGO A. HOPENHAYN. 2011. Firm Microstructure and Aggregate Productivity. *Journal of Money, Credit and Banking* 43, 111-145. [[Crossref](#)]
29. Jeroen C.J.M. van den Bergh, Bernhard Truffer, Giorgos Kallis. 2011. Environmental innovation and societal transitions: Introduction and overview. *Environmental Innovation and Societal Transitions* 1:1, 1-23. [[Crossref](#)]
30. Karolina Safarzyńska, Jeroen C.J.M. van den Bergh. 2010. Demand-supply coevolution with multiple increasing returns: Policy analysis for unlocking and system transitions. *Technological Forecasting and Social Change* 77:2, 297-317. [[Crossref](#)]
31. Timothy Bresnahan. General Purpose Technologies 761-791. [[Crossref](#)]
32. Klaus Desmet, Esteban Rossi-Hansberg. 2009. Spatial growth and industry age. *Journal of Economic Theory* 144:6, 2477-2502. [[Crossref](#)]
33. Ľuboš Pástor,, Pietro Veronesi. 2009. Technological Revolutions and Stock Prices. *American Economic Review* 99:4, 1451-1483. [[Abstract](#)] [[View PDF article](#)] [[PDF with links](#)]
34. Michelle C. Baddeley. 2008. STRUCTURAL SHIFTS IN UK UNEMPLOYMENT 1979-2005: THE TWIN IMPACTS OF FINANCIAL DEREGULATION AND COMPUTERIZATION. *Bulletin of Economic Research* 60:2, 123-157. [[Crossref](#)]