

Acceptability of placebo multiparticulate formulations in children and adults

Felipe L. Lopez^a, Punam Mistry^b, Hannah K. Batchelor^b, Joanne Bennett^c, Alastair Coupe^c,
Terry B. Ernest^d, Mine Orlu^a, Catherine Tuleu^{a,*}.

Affiliations: ^aSchool of Pharmacy, University College London, London, United Kingdom.

^bSchool of Pharmacy, Institute of Clinical Sciences, University of Birmingham, Birmingham, United Kingdom. ^cPfizer Global R&D, Sandwich, Kent, United Kingdom. ^dGlaxoSmithKline, Harlow, Essex, United Kingdom.

* Corresponding author: Catherine Tuleu, UCL School of Pharmacy, 29-39 Brunswick Square, London, WC1N 1AX, United Kingdom, [c.tuleu@ucl.ac.uk], +44(0)20 7753 5857.

Supplementary information

Demographic characteristics of the study participants.

Session	Children			Adults		
	N	Age (years) Ave \pm SD	Age (years) Min. - Max.	N	Age (years) Ave \pm SD	Age (years) Min. - Max.
1	9	6.6 \pm 1.7	4 - 9	6	25.3 \pm 5.2	21 - 35
2	13	8.2 \pm 2.2	5 - 12	12	23.0 \pm 5.3	19 - 37
3	8	6.6 \pm 2.2	4 - 10	8	20.6 \pm 3.0	18 - 27
4	7	7.0 \pm 2.1	5 - 11	7	20.7 \pm 2.1	18 - 25
Phase 1 total	37	7.2 \pm 2.1	4 - 12	33	22.4 \pm 4.5	18 - 37
5	8	7.1 \pm 2.3	4 - 10	7	23.6 \pm 4.9	19 - 30
6	7	8.7 \pm 2.0	6 - 11	7	24.7 \pm 4.3	20 - 32
7	12	6.8 \pm 1.5	4 - 9	6	26.5 \pm 4.3	24 - 35
8	7	6.9 \pm 2.4	4 - 11	8	26.6 \pm 4.9	20 - 34
Phase 2 total	34	7.3 \pm 2.1	4 - 11	28	25.4 \pm 4.6	19 - 35
Grand total	71	7.2 \pm 4.0	4 - 12	61	23.7 \pm 4.7	18 - 37

The ages of the volunteers that participated in the study are shown in the histograms below:

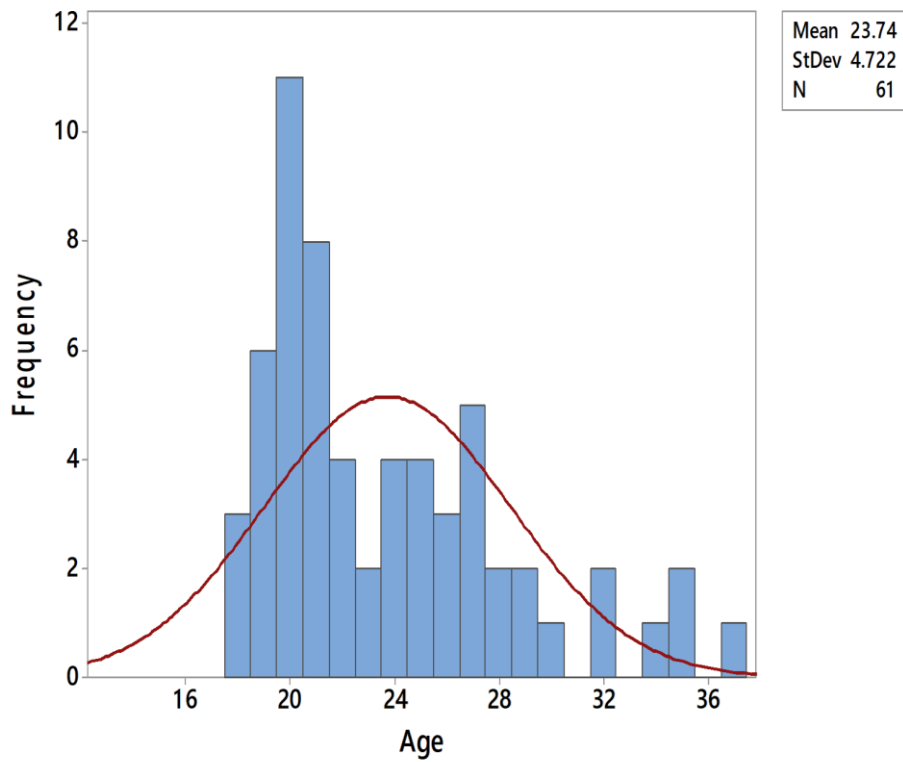


Figure 1. Histogram of age for adult participants.

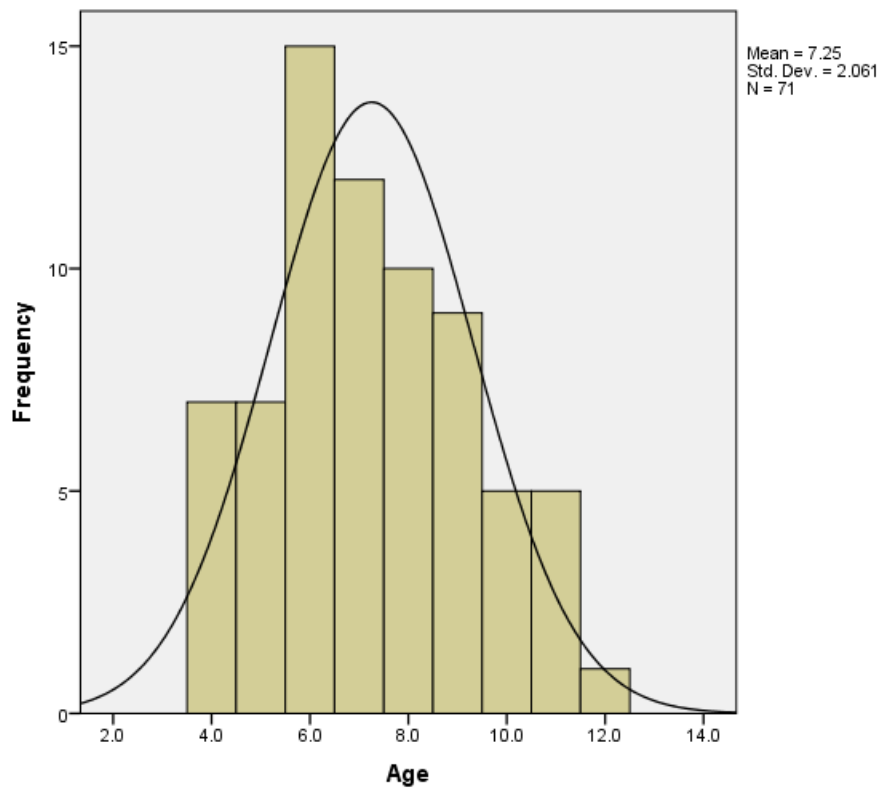


Figure 2. Histogram of age for children participants.