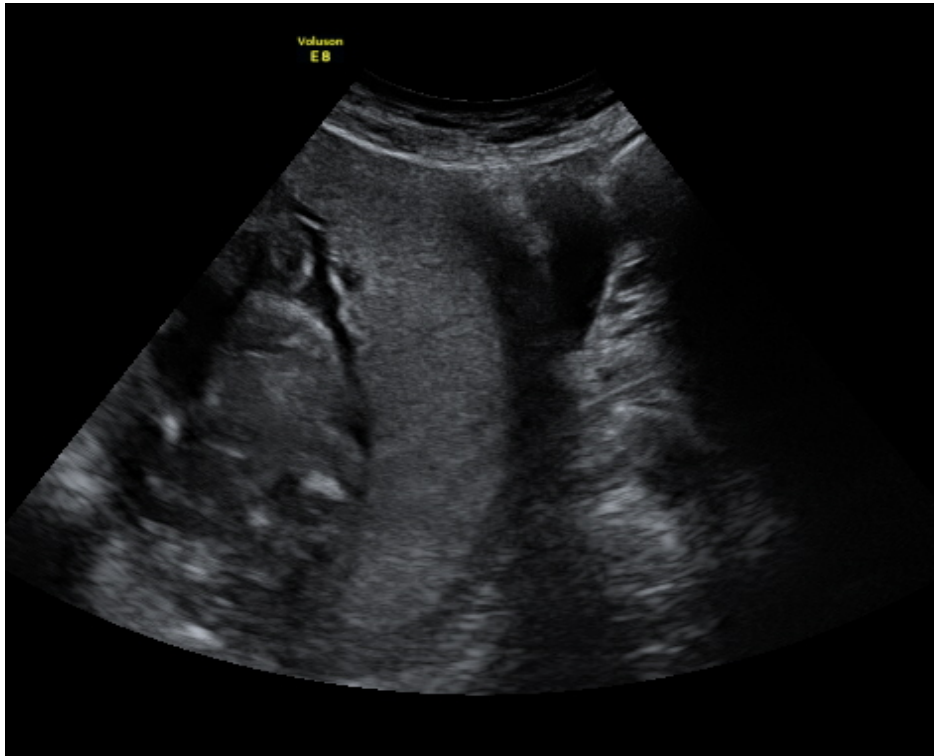
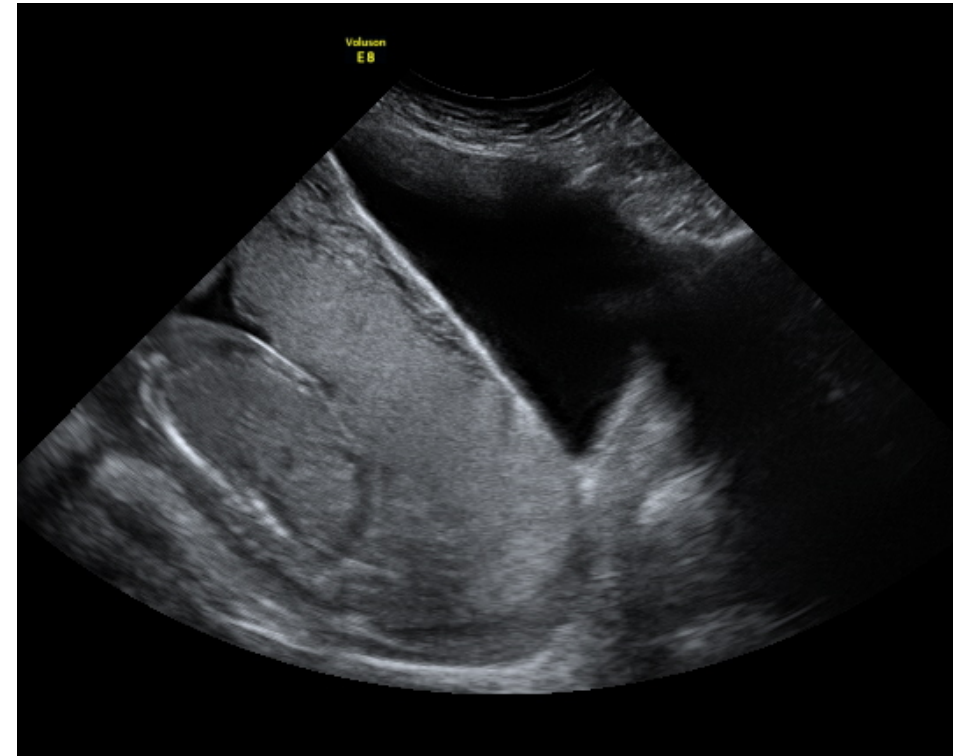


**Figure 1: Midline sagittal image of the same woman with a placenta previa and an empty and then filled bladder (images taken from an accreta case at 21 weeks gestation)**

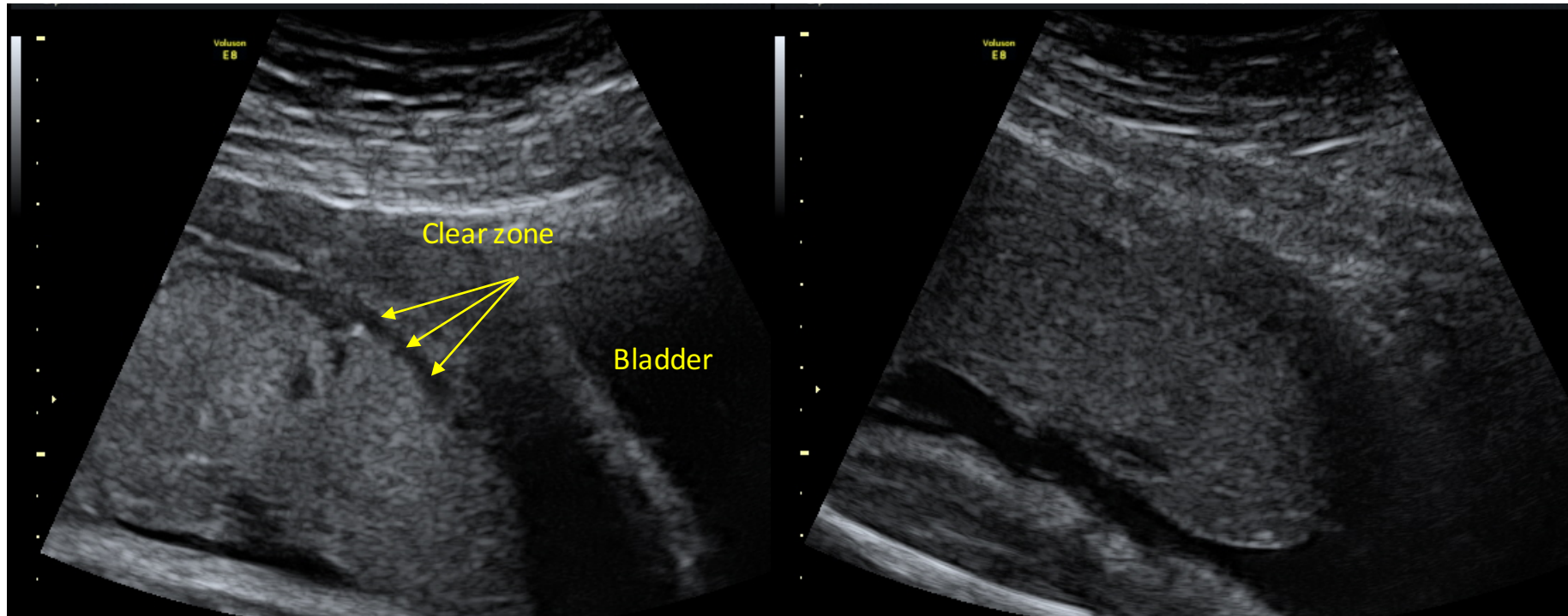


A: Empty bladder (measured at <50mls)



B: Filled bladder (measured at 287mls)

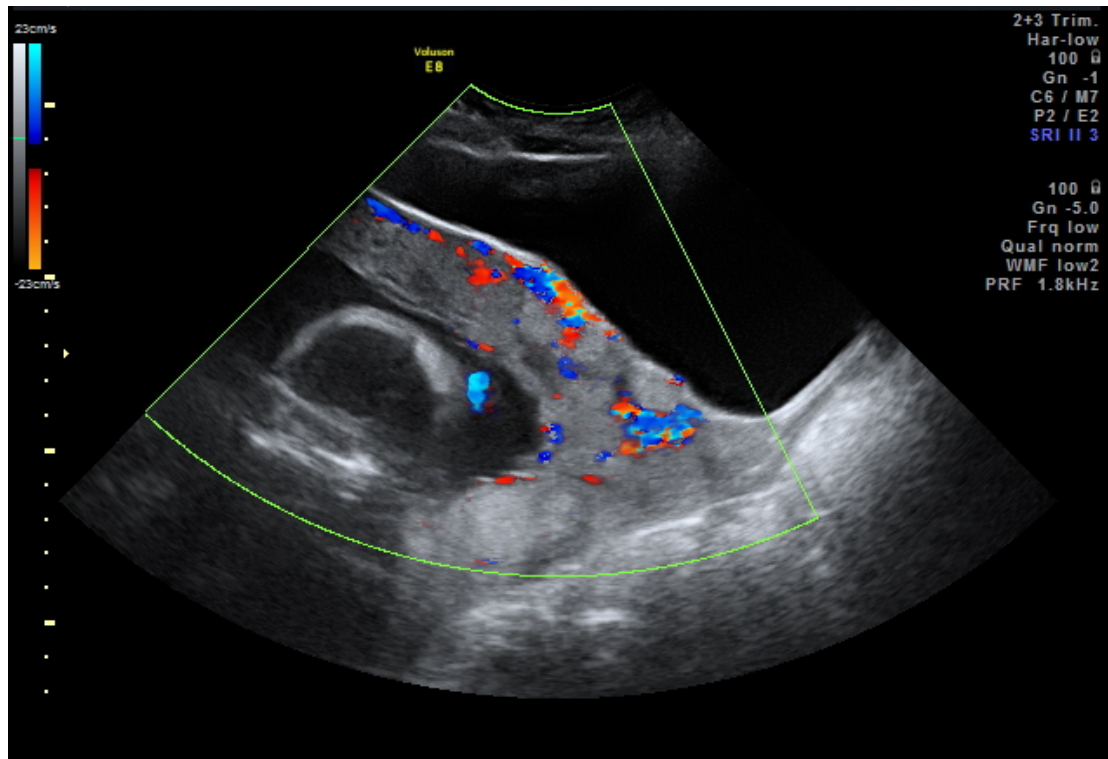
**Figure 2: Clear zone less apparent due to an under filled bladder (images from a non-AIP case at 32 weeks gestation)**



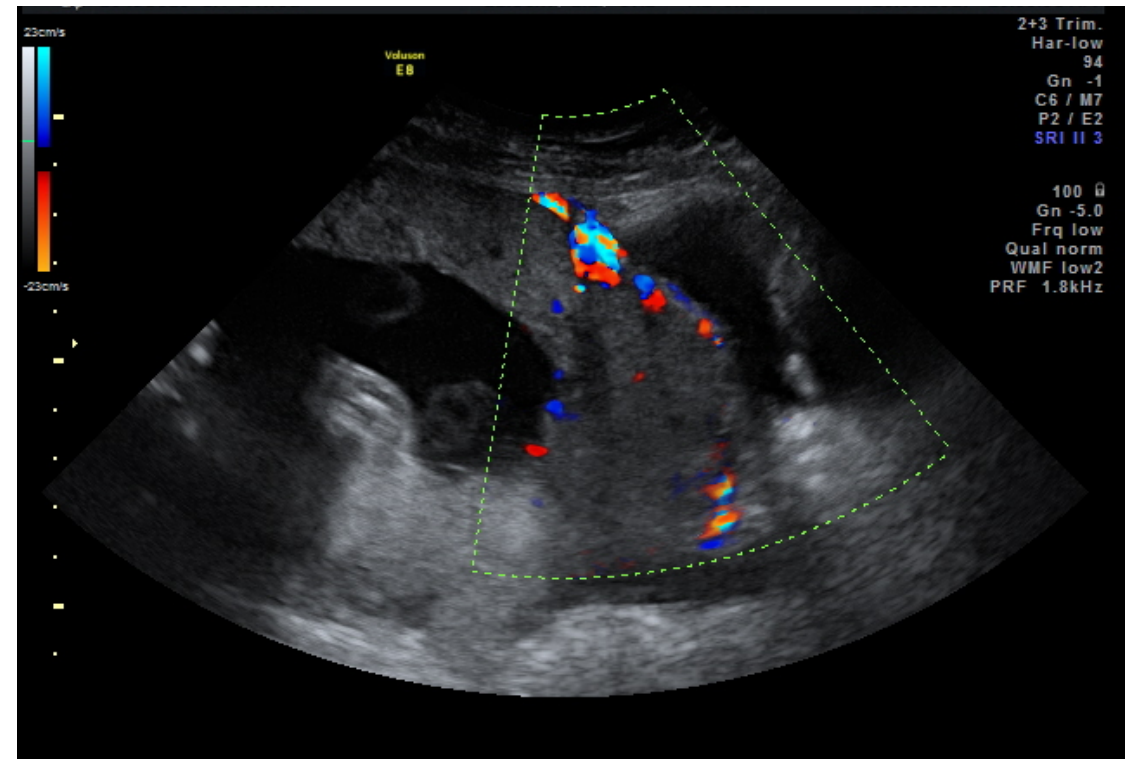
A: Full bladder (measured at 258mls) and minimal probe pressure

B: Empty bladder (measured at <30mls) and minimal probe pressure

### Figure 3: Change in the appearance of the vascularity in AIP (Images from a case of increta at 24 weeks gestation)



A: Full bladder (measured at 398mls)



B: Relatively empty bladder (measured at 62mls)