

Accepted Manuscript

Patients with a severe prolonged Disorder of Consciousness can show classical EEG responses to their own name compared with others' names

Agnieszka M. Kempny, Leon James, Kudret Yelden, Sophie Duport, Simon F. Farmer, E. Diane Playford, Alexander P. Leff



PII: S2213-1582(18)30136-0
DOI: doi:[10.1016/j.nicl.2018.04.027](https://doi.org/10.1016/j.nicl.2018.04.027)
Reference: YNICTL 1388
To appear in: *NeuroImage: Clinical*
Received date: 2 May 2017
Revised date: 5 April 2018
Accepted date: 22 April 2018

Please cite this article as: Agnieszka M. Kempny, Leon James, Kudret Yelden, Sophie Duport, Simon F. Farmer, E. Diane Playford, Alexander P. Leff , Patients with a severe prolonged Disorder of Consciousness can show classical EEG responses to their own name compared with others' names. The address for the corresponding author was captured as affiliation for all authors. Please check if appropriate. Ynicl(2017), doi:[10.1016/j.nicl.2018.04.027](https://doi.org/10.1016/j.nicl.2018.04.027)

This is a PDF file of an unedited manuscript that has been accepted for publication. As a service to our customers we are providing this early version of the manuscript. The manuscript will undergo copyediting, typesetting, and review of the resulting proof before it is published in its final form. Please note that during the production process errors may be discovered which could affect the content, and all legal disclaimers that apply to the journal pertain.

Patients with a Severe Prolonged Disorder of Consciousness can show classical EEG responses to their own name compared with others' names

Agnieszka M. Kempny, MD^{1,2}, Leon James, PhD¹, Kudret Yelden^{1,2}, Sophie Duport, PhD¹, Simon F. Farmer, PhD⁴, E. Diane Playford, MD^{1,5} and Alexander P. Leff, PhD^{2,3}

1. *The Institute of Neuro-palliative Rehabilitation, Royal Hospital for Neuro-disability, London, UK, SW15 3SW*
2. *Department of Brain Repair and Rehabilitation, Institute of Neurology, University College London, Queen Square, London, UK, WC1N 3BG,*
3. *Institute of Cognitive Neuroscience, University College London, Queen Square WC1N 3AR, London, UK*
4. *The National Hospital for Neurology & Neurosurgery, Queen Square, London WC1N 3 BG*
5. *Health Sciences / Warwick Medical School / University of Warwick / Coventry / CV4 7AL*

Corresponding author

Agnieszka M. Kempny, MD

Institute of Neuro-palliative Rehabilitation

Royal Hospital for Neuro-disability

SW15 3SW Putney, London, UK, agnieszka.kempny@gmail.com

Abstract

Patients in Vegetative State (VS), also known as Unresponsive Wakefulness State (UWS) are deemed to be unaware of themselves or their environment. This is different from patients diagnosed with Minimally Conscious state (MCS), who can have intermittent awareness. In both states, there is a severe impairment of consciousness; these disorders are referred to as disorders of consciousness (DOC) and if the state is prolonged, pDOC. There is growing evidence that some patients who are behaviourally in VS/UWS can show neural activation to environmental stimuli and that this response can be detected using functional brain imaging (fMRI/PET) and electroencephalography (EEG). Recently, it has also been suggested that a more reliable detection of brain responsiveness and hence a more reliable differentiation between VS/UWS and MCS requires person-centred and person-specific stimuli, such as the subject's own name stimulus.

In this study we obtained event related potential data (ERP) from 12 healthy subjects and 16 patients in pDOC, five of whom were in the VS/UWS and 11 in the Minimally Conscious State (MCS). We used as the ERP stimuli the subjects' own name, others' names and reversed other names. We performed a sensor level analysis using Statistical Parametric Mapping (SPM) software. Using this paradigm in 4 DOC patients (3 in MCS, and 1 in VS/UWS) we detected a statistically significant difference in EEG response to their own name versus other peoples' names with ERP latencies (~300ms and ~700ms post stimuli). Some of these differences were similar to those found in a control group of healthy subjects.

This study shows the feasibility of using self-relevant stimuli such as a subject's own name for assessment of brain function in pDOC patients. This neurophysiological test is suitable for bedside/hospital based assessment of pDOC patients. As it does not require sophisticated scanning equipment it can feasibly be used within a hospital or care setting to help professionals tailor medical and psycho-social management for patients.

ACCEPTED MANUSCRIPT

Introduction

Previously, patients who emerged from coma following a severe brain injury, into a state of wakefulness but unresponsiveness were diagnosed as being in a Vegetative State (VS) (Jennett and Plum 1972), also called the Unresponsive Wakefulness Syndrome (UWS) (Laureys, Celesia et al. 2010). Later it became apparent that this group of patients is heterogeneous and that some patients demonstrate self-awareness and environmental awareness, albeit in an inconsistent manner. Hence, a new diagnostic term of Minimally Conscious State (MCS) was introduced by Giacino et al. (Giacino, Ashwal et al. 2002) in order to distinguish this patient group from those in the VS/UWS state. Both types of patients (UWS and MCS) are now said to suffer from a Disorder of Consciousness (DOC) or prolonged Disorder of Consciousness (pDOC), which recognizes that the two sub-types exist on a continuum (Turner-Stokes 2014). Furthermore, some VS/UWS patients defined by behavioural criteria can show a degree of awareness, and could be thought of as being in a “functional locked-in syndrome” rather than in VS or UWS (Coleman, Rodd et al. 2007; Coleman, Davis et al. 2009) (Owen, Coleman et al. 2006; Monti, Vanhaudenhuyse et al. 2010; Boly, Garrido et al. 2011; Formisano, D'Ippolito et al. 2013). It has been estimated that approximately 10% of the patients with a diagnosis of VS/UWS, have some preserved higher brain function (Turner-Stokes, Kitzinger et al. 2012).

The methods for detecting unexpected levels of self-awareness have relied on technological approaches such as functional Magnetic Resonance Imaging (fMRI) or electroencephalography (EEG), rather than clinical rating scores that rely on observations of the patient's externally expressed behaviour (Coleman, Davis et al. 2009; Cruse, Chennu et al. 2011). A particularly salient auditory stimulus is the subject's own name (SON) (Moray 1959) and it has been suggested that this could be used as a neurophysiological approach for detecting

higher-level brain function in pDOC patients (Cavinato, Volpato et al. 2011; Cruse, Beukema et al. 2014), (Risetti, Formisano et al. 2013). The EEG brain responses to a SON are assessed using event related potentials (ERP). ERP responses to SON auditory stimuli in healthy adults' subjects have two main components that occur around 250 ms and 800 ms post stimulus; these are called the early and late response, respectively. These are of positive polarity and are widely distributed over the frontal and parietal areas (Polich 2007; Hauger, Schnakers et al. 2015). Both responses are considered to represent cognitive potentials. The early response is deemed to reflect cognitive functions such as stimulus recognition and working memory updating (Coles, Gratton et al. 1988), (Polich 1987), while the late response is believed to occur during recollection and retrieval processes (Holeckova, Fischer et al. 2006). Researchers have used a variety of different paradigms to elicit name-specific ERPs. More passive paradigms (such as the one we utilize) have been shown to identify greater responses to others' names than own name in control participants, particularly affecting the P300 component (Hauger, Schnakers et al. 2015).

The aim of our study was to assess the brain responses to a SON paradigm in patients with pDOC to see if we could identify subjects, at either the group or single-subject level, who had consistent ERP responses in time and neuroanatomical space resembling those of healthy controls.

Methods

Subjects

Controls

Twelve healthy, right-handed volunteers, five female, mean age of 39.09 years, (SD =5.26) were included. None had suffered from neurological or psychiatric disorders or brain injury; none were taking psychotropic medications.

Prolonged Disorders of Consciousness Patients

We recruited 16 patients from the Royal Hospital for Neuro-disability in London, UK. This 26-bedded unit provides a comprehensive neuro-rehabilitation programme for patients with DOC in the post-acute phase following severe brain injury (GCS<8).

The patient inclusion criteria were as follows: 1) severe acquired brain injury leading to prolonged DOC (longer than 4 weeks since brain injury) or permanent DOC. A permanent DOC was defined according to the Royal College of Physician Guidance (RCP 2013), that is, lasting longer than 12 months if the aetiology is trauma, or longer than 6 months for anoxia and other causes; 2) conservative management of brain injury (no neurosurgery); 3) at least unilaterally intact brainstem auditory evoked potentials (BAEP).

All patients were assessed using The Sensory Modality Assessment and Rehabilitation Technique (SMART) (Gill-Thwaites and Munday 2004). The SMART scale scores responses to sensory and environmental stimuli during ten one-to-one (patient-assessor) sessions lasting approximately 60 minutes each. In all patients, the diagnosis of VS/UWS or MCS remained stable on SMART testing throughout the assessment and ERP testing period.

Written informed consent was obtained from all the control subjects and an assent from the relatives of the patients prior to the study. The investigation was carried out in accordance with the latest version of the Declaration of Helsinki and the study was approved by a National Research Ethics Committee (NRES Committee London-Queen Square, REC reference number 11/LO/1233, SSA reference number 11/LO/2052).

Experimental paradigm

During the experiment three types of auditory stimuli were presented: i) SON, ii) other names and iii) time-reversed other names. There were three block types: others' names, reversed names and rest (no auditory stimuli). Each block was started with an auditory cue, recorded by the same male voice as used for all names in this experiment "listen to the following names". Two SON trials were randomly inserted in the two auditory blocks (others' and reversed names, see Figure 1), so that they would be flanked by acoustically similar but semantically varying stimuli in the block. The auditory stimuli were presented in blocks totalling 15 stimuli each. The inter-stimulus interval was fixed at 2000 ms. Each auditory block lasted for 35.5 secs and was followed by a 10 sec long rest block. Twenty-two blocks were presented producing in total for each subject 44 SON trials, 143 others' name trials and 143 reversed name trials. The duration of the auditory stimuli ranged from 292ms to 736ms, average = 500ms. During the recording the patients remained awake and in case of drowsiness an activation protocol was used as described by Giacino (Giacino, Kalmar et al. 2004).

We focused our analyses on the contrast of own name vs. others' names because these two pairs of stimuli are the closest in terms of acoustic information. Others' names and own name

contain both phonological and semantic information but mainly differ in terms of semantic salience (Arnell, Shapiro et al. 1999). While reversed names offer a good acoustic control (they are broadband stimuli) and contain some phonological elements of normal speech, they differ in both their phonological form (in particular phonotactics) as well as their lexico-semantic content (Leff, Schofield et al. 2008).

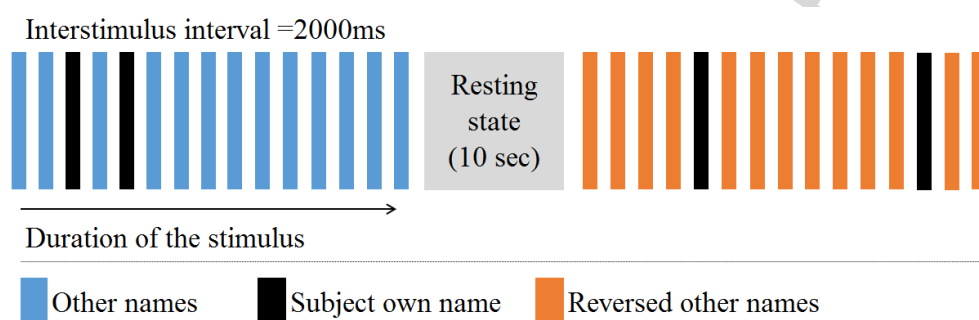


Figure 1 Auditory paradigm, each activation block lasted for 35.5 sec, 15 stimuli per block with the random presentation of two SONs and 13 other stimuli or reversed names, in total 22 blocks were presented, 11 with the other names and 11 with reversed names.

The auditory stimuli (names) were recorded by a male native English speaker using a Magix music editor version 2.0 and the audio files were edited using the Praat software (free computer software developed by Paul Boersma and David Weenink, from the Institute of Phonetic Sciences - University of Amsterdam). The reversed name stimuli were simply time reversed other names used in this experiment (the spectrogram was reflected across the midpoint of the time axis). There were four different other name and time-reversed stimuli that were repeated

143 times. The stimuli were delivered binaurally through earphones using evoke software 3.1.5 (ANT Neuro, Enscheda, The Netherlands) with sound levels set to 70 dB.

EEG Data registration and analysis

The EEG data were acquired using a Waveguard 64 EEG sensor-cap (ANT-Neuro, Enscheda, the Netherlands) (Figure 2) whose standard sensor positions were derived from the 10-20 system (Jasper, 1958) with additional positions being determined from the 10-10 electrode placement system (Koessler, Maillard et al. 2009). The EEG sensors were configured in a bipolar montage. The online filtering regime was 0.53-40Hz, without mains suppression; data was sampled at 512Hz. Online sensitivity was set to 70 μ V/cm and a ground electrode was placed at FpZ. The electrode impedances were kept below 5 Kohm.

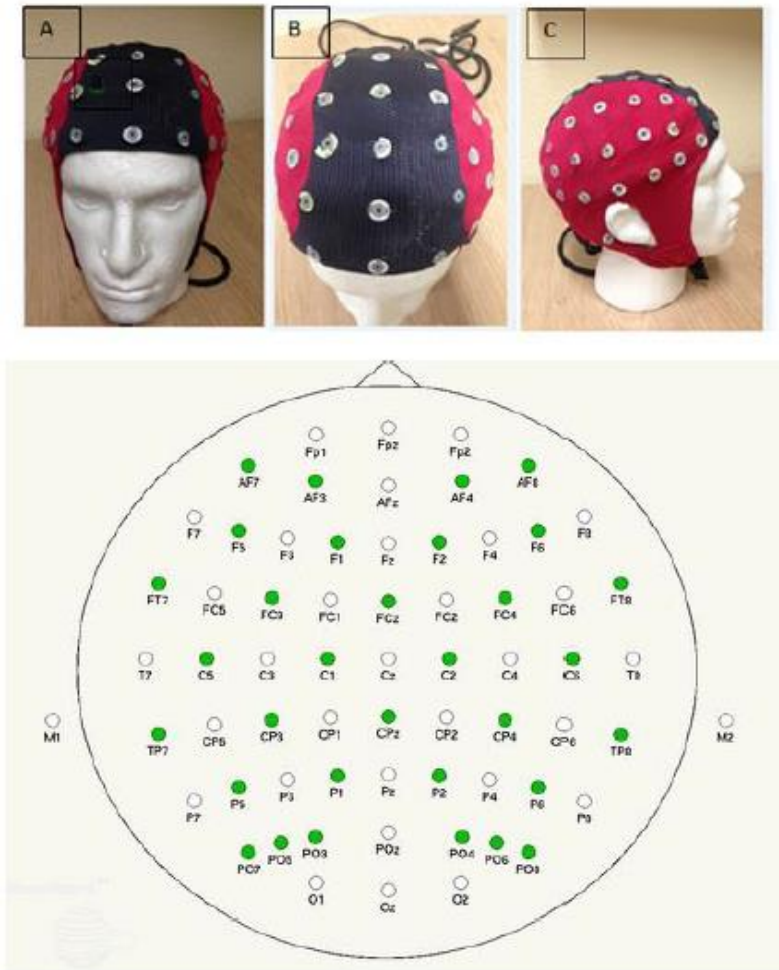


Figure 2 The EEG cap layout, the top figures shows frontal, top and lateral view of the cap, the bottom figure shows the 10-20 layout with an additional 10-10 electrodes, the layout provided by the ANT-Neuro, Enschede, the Netherlands.

The data was analysed using the Statistical Parametric Software (*SPM 8, the Wellcome Trust Centre for Neuroimaging, UCL, London, UK*). The EEG data were converted from the *.cnt format to the readable by SPM8 run using Matlab (*Matlab version R2011a, Mathworks, Natick MA*). The converted EEG data was subjected to a high-pass filter of 1Hz to eliminate slow drift correction. Next eye artefact correction according to a script written within SPM8 (Berg eye

movement correction) was performed. At this stage 2 out of 12 healthy subjects' and 1 out of 16 pDOC data sets were excluded from the further analysis due to excessive eye movement artefacts. Subsequently three epochs were created for each of the three conditions: SON, other names and reversed names with the epoch beginning 100ms before the stimulus onset and ending 1000ms later. The data were then low pass filtered at 30Hz to eliminate muscle artefact and the EEG gamma frequency band. Subsequently 3D images were created for each trial, to represent changes of the scalp recorded potentials in scalp space (two dimensions, X and Y) over the peri-stimulus time (z dimension). (Litvak, Mattout et al. 2011). A single image per trial contained information about the electrical signal in μV . For the controls, the data was taken to a second level of analysis, where one-way-ANOVA with R-levels and F-test was performed. The contrast between responses to own name versus responses to other names was examined for statistical differences, since this contrast was deemed as the most indicative of the self-awareness. The results were assessed with an F test for differences of either polarity. The results were initially thresholded at $p=0.001$ uncorrected with a family wise error correction (FWE) correction based on random field theory (Litvak, Mattout et al. 2011). As the whole epoch lasted 1100ms and we were not expecting ERP responses throughout this entire time, we used two time defined volumes of interest at 250-350ms and 600-800ms post-stimulus. These masks were applied within SPM as a small volume correction (effectively the whole of sensor-space over these two-time windows). Only those regions, that survived a FWE correction of $p < .05$ corrected for multiple comparisons within these windows are reported (Litvak, Mattout et al. 2011). As F tests identify differences between two conditions but do not indicate the directionality of effect, we plotted out the data for each significant response in controls (as a group, see figure 3 and table 1) and patients (individually, see figures 4 and 5, and table 3). This analysis is in accordance with that suggested by Rousselet et al. (Rousselet, Foxe et al. 2016) as it corrects for multiple comparisons across both sensor space and peri-

stimulus time. For illustrative purposes only, ERPs were averaged across electrodes (and for controls across subjects) to produce grand mean ERPs for figures 3 and 5.

Results

EEG responses to SON in control population

The F test differences between responses to the SON and other names averaged for 10 controls were calculated. The table indicates all significant responses within the two-time windows of 250 to 350ms and 600 to 800ms post stimuli and the graphical presentation of sensor space*time (Figure 3 and Table 1). Note that the response to others' names was greater than own name centrally at ~300ms (positive polarity), while the later, left-lateralized response at ~700ms was of a negative polarity for own name.

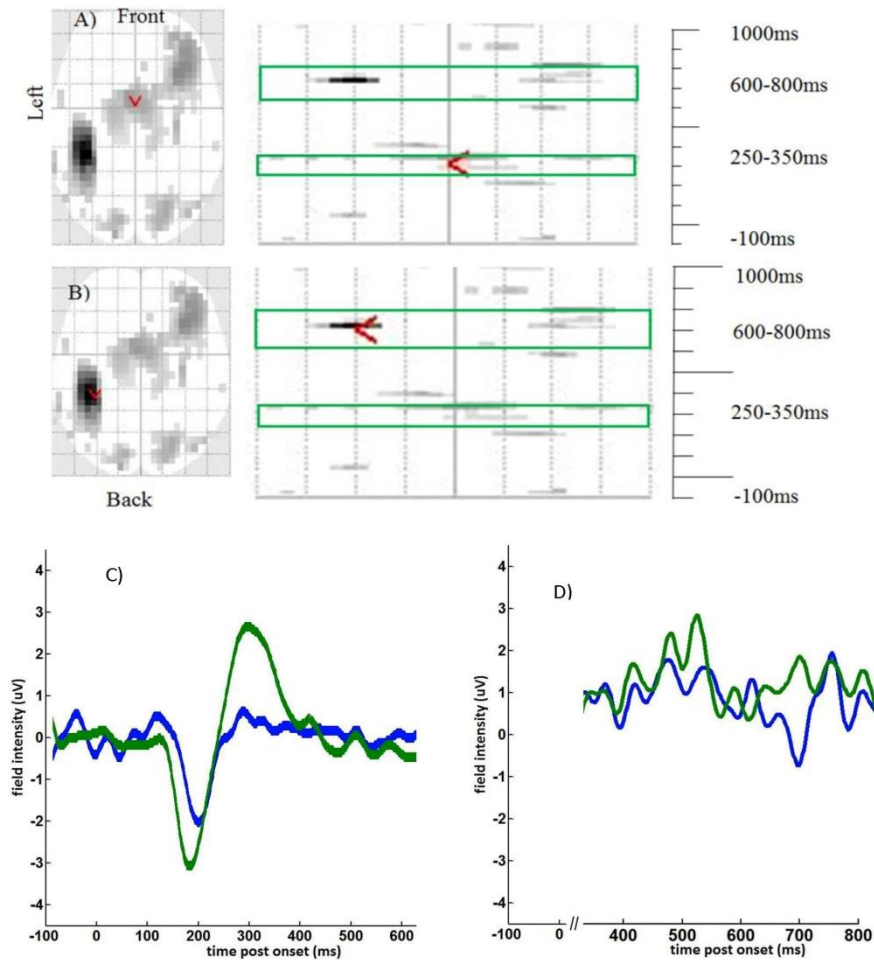


Figure 3 Results of F test difference between responses to own name and other names within the window of -100ms to 1000ms in per stimulus time. The red arrow indicates the most significant response from Healthy control subjects (n=10), using an F test to contrast ‘own name’ against ‘others’ names’ A) Early response 250-350ms (midline frontal), B) Late response 600-800ms, (left superior parietal), C) ERP response 250-350ms to own name-blue line and other names-green line, D) ERP response 600-800ms to own name-blue line and other names-green line.

Table 1. The responses from the healthy controls (n=10) showing the difference between responses to SON vs. other names. The result was considered as significant if the correction using familywise error (FWE) and false discovery rate (FDR) were <.05; the mm x mm shows the spatial position and ms indicates the time since onset for the most significant response.* positions taken from (Koessler, Maillard et al. 2009)

10 controls, cluster-level data				Peak voxel data						
Time window	p FEW corrected	F	Z	mm (L-R)	mm (A-P)	ms	Cortical projection n*	Mean ERP Own name μ V	Mean ERP Others' names μ V	EEG electrodes averaged for ERPs in Fig 3
250-350ms	0.003	25.58	3.77	0	2	307	Superior frontal midline	0.2	2.8	Fz FCz Cz CPz; F1 FC1 C1 Cp1; F2 FC2 C2 CP2
600-800ms	0.012	49.22	4.67	-34	-36	703	Superior parietal left	-1.1	1.7	T7 C5; M1 TP7 CP5; P7 P5

Study population characteristics

Sixteen patients with pDOC were included in the study (six female, mean age was 46 years, SD 11), with the following aetiologies: intracerebral haemorrhage (n=6), anoxic brain injury (n=5), traumatic brain injury (n=4) and tuberculosis meningitis (n=1). The patients had been in pDOC for 17.31 months on average (Table 2).

Table 2 Demographic data and characteristics of the study population. VS/UWS-vegetative state/Unresponsive Wakefulness State, MCS-minimally conscious state, pDOC prolonged Disorders, of Consciousness, * all included patients were diagnosed using The Sensory Modality Assessment and Rehabilitation Technique (SMART)

Patient's diagnosis*	Gender	Age in yrs.	Time since onset in months	Aetiology	Resting state EEG
1 MCS	F	18	4.7	Anoxic brain injury	low amplitude without distinguishable features
2 MCS	F	61	55.1	Right frontal lobe bleed	polymorphic activity at 2-2.5Hz, small amount of beta activity at 16-18Hz
3 MCS	M	55	9.1	Large intracerebral bleed	diffuse polymorphic at 1.5-3.0Hz, with low amplitude at 5-6Hz superimposed, small amount of 18-20Hz frontal bilaterally
4 VS/UWS	M	45	5.4	Anoxic brain injury post cardiac arrest	low amplitude and without distinguishable features
5 MCS	M	68	4.0	Grade V SAH due to aneurysm left ACM	Diffuse activity at 1.0-1.5Hz, rhythm at 8.5Hz superimposed over post central regions
6 MCS	M	46	4.7	Extensive fronto-temporal left haemorrhage	supressed posterior rhythm, frontal derivation 4-6Hz rhythm
7 MCS	M	38	9.1	Left fronto-temporo-parietal contusions following assault	asymmetrical R>L, activity 5-7Hz
8 MCS	F	30	80.9	Petechial haemorrhage following road traffic accident	asymmetrical, diffuse activity at 1.5-3Hz, occasional activity at 6Hz central
9 MCS	F	37	1.8	Bilateral intracerebral bleed	well- formed posterior rhythm 4-6Hz
10 VS/UWS	M	24	6.4	Hydrocephalus following TB meningitis	slow activity at 1-3Hz, occasionally over right centro- temporal regions 4.0-4.5Hz
11 VS/UWS	M	20	13.6	Diffuse axonal injury following road traffic accident	diffuse polymorphic activity at 1.5-3.0Hz,with low amplitude at 5-6Hz
12 VS/UWS	M	51	40.4	Right temporo-parietal bleed	over both hemispheres activity at 5-6Hz, focal activity at 4-2.5Hz over the right superior frontal region
13 VS/UWS	F	62	5.0	Anoxic brain injury post cardiac arrest	symmetrical, low voltage activity mainly 3-4Hz
14 MCS	M	52	6.4	Left parietal haemorrhage following road traffic accident	activity at 5-6Hz over central
15 MCS	F	31	26.0	Anoxic brain injury following cardiac arrest	low amplitude activity at 2-4Hz occasional activity at 7 Hz central
16 MCS	M	53	4.4	Anoxic brain injury following cardiac arrest	occipital rhythm diminished, frontal 7-10Hz

Our inclusion criterion for hearing ability was that each patient had at least unilateral positive brainstem auditory potentials. The BAEPs values were delayed (Supplement material Table 3) in 10 out of 16 prolonged DOC subjects with the mean time for inter-peak I to III of 2.55ms, the reference value for normal subjects is 2.2ms (Tusa, Stewart et al. 1994). A similar delay was observed for the interpeak III-V, which in the pDOC patients was 2.1ms, while the reference is 1.93ms (Tusa, Stewart et al. 1994), the interpeak I to V was only slightly delayed in the study population to 4.44ms vs. 4.13ms as a reference value (Tusa, Stewart et al. 1994).

EEG responses to SON in pDOC patients

At the group level there were no significant differences between pDOC patients' responses to SON and other names. At the single subject level, however, we identified 4 pDOC patients (of the 15), who demonstrated significant responses between their own name vs. others' names. Two of these patients (numbered as: 2MCS and 16MCS) had responses very similar to controls in both timing and the positive polarity of the ERPs, while the other two patients (13VS/UWS and 15MCS) had statistically significant effects in the same time windows, but the direction of the effect was of the opposite polarity to controls (negative ERP to others' names) (Figures 4 and 5, Table 3).

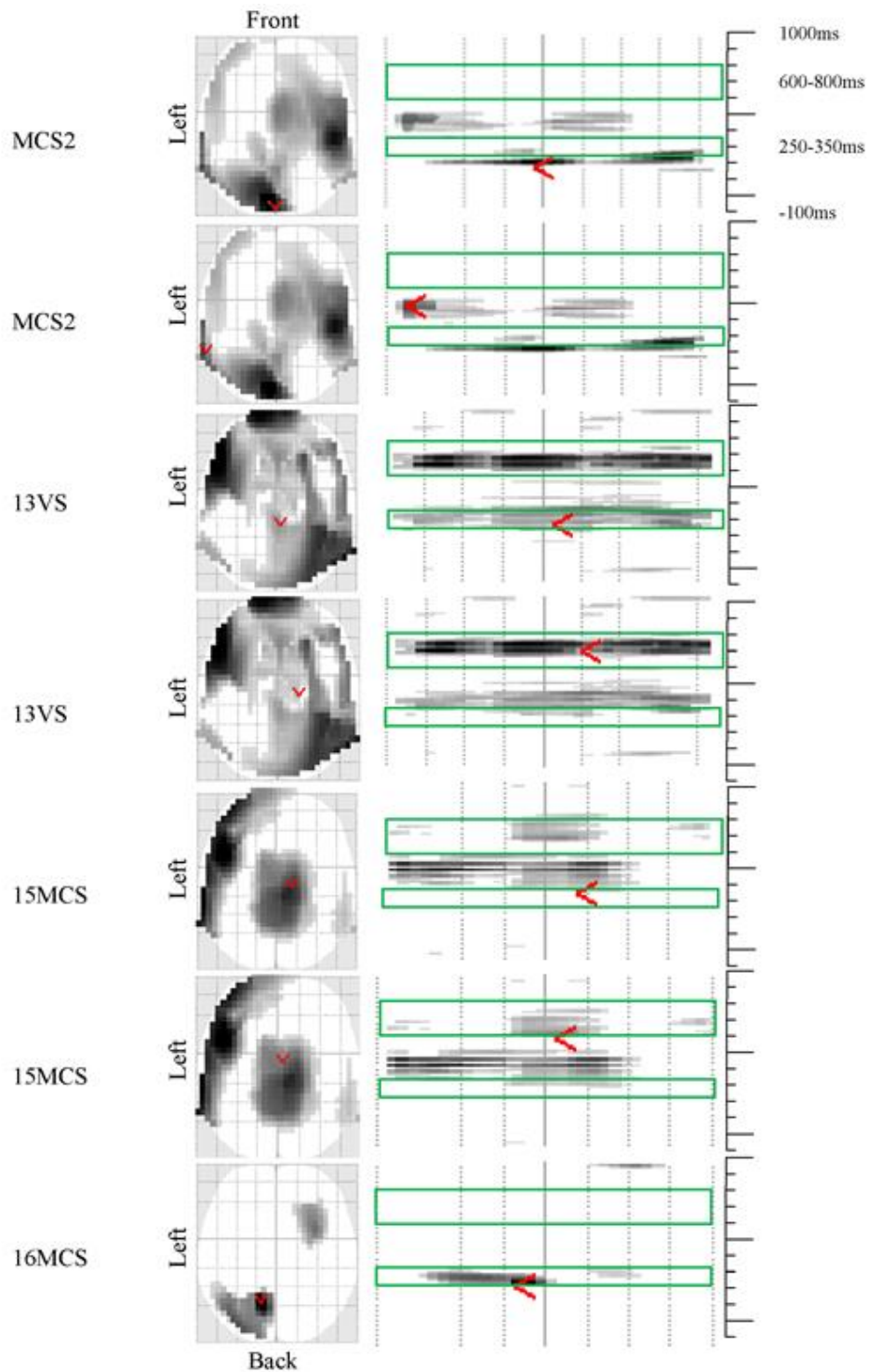


Figure 4 Results of F test difference between responses to own name and other names within the window of -100ms to 1000ms. Early (250-350ms) response and late (600-800ms) response in four pDOC patients showing the F test results with the statistical significant differences between responses to own name vs. responses to other names. The red arrow indicates the most significant response indicating the spatial position of the most significant responses. VS/UWS- Vegetative State/Unresponsive Wakefulness State, MCS- Minimally Conscious State

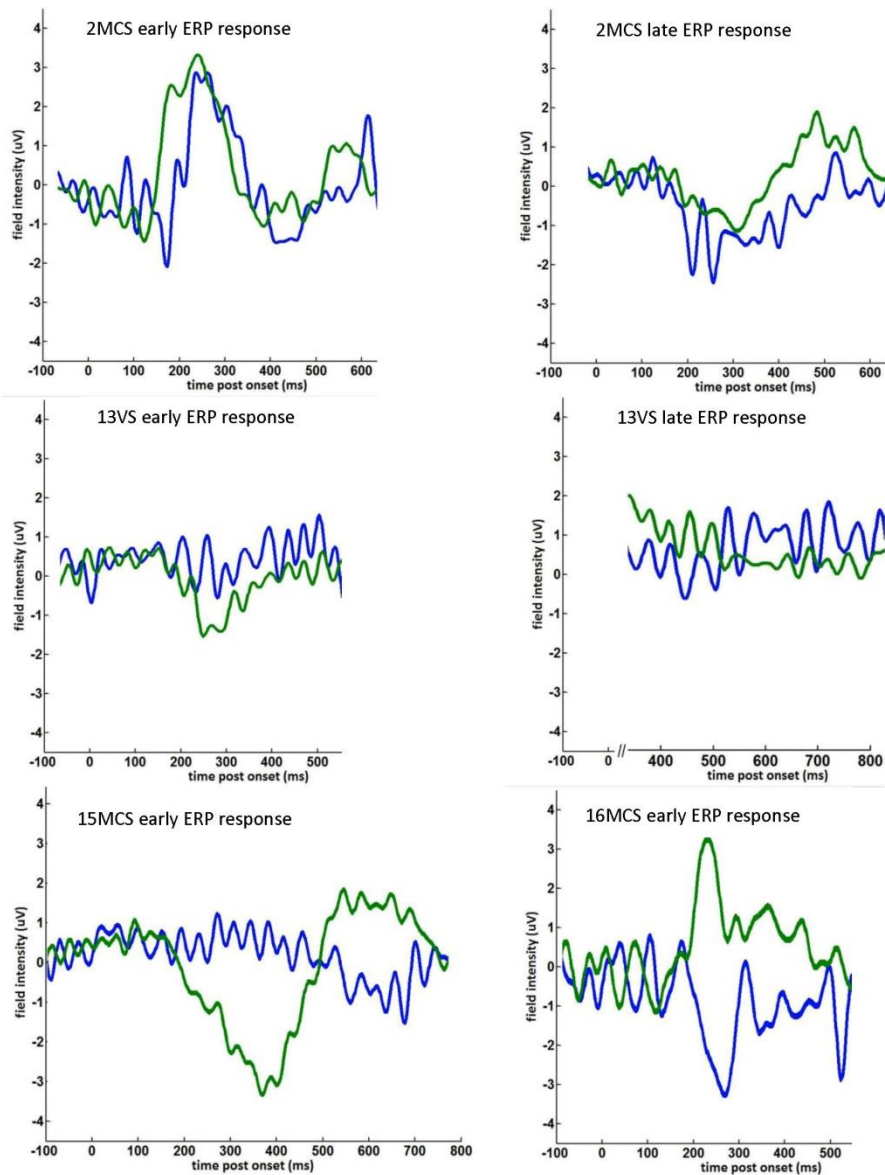


Figure 5 Represents the Event Related Response to own name (blue line) and other names (green line) in individual patients

Table 3 The responses from the four patients with the pDOC showing the difference between responses to SON vs. other names. The mm x mm shows the spatial position in MNI coordinates NB: -x value = left; -y value = behind the anterior commissure and ms indicates the time since stimulus onset for the most significant response. * according to (Koessler, Maillard et al. 2009)

Individual patient analyses cluster level data							Peak voxel data			
Subject number	<i>p</i> FEW corrected	F	Z _i	mm (L-R)	mm (A-P)	ms	Cortical projection *	Mean ERP Own name μV	Mean ERP Others' names μV	EEG electrodes averaged for ERPs in Fig 5
2MCS	<0.001	34.33	5.59	-4	-8	180	Inferior parietal midline	-2.8	2.8	POz PO4 PO6 PO8; PO3 PO5 PO7; O1 Oz O2
2MCS	0.013	25.09	4.78	-60	-52	471	Middle temporal left	-0.5	2.7	T7 C5; M1 TP7 CP5; P7 P5
13VS/UWS	0.021	20.46	4.30	4	-36	267	Pre- central /superior frontal midline	1.2	-2.1	Cz CPz
13VS/UWS	0.001	29.14	5.15	26	29	625	Superior frontal right	-5.3	0.6	AF4; F6 F8 F4
15MCS	0.065	16.19	3.80	13	-19	350	Post- central midline	0.5	-4.1	Fz FCz Cz CPz; F1 FC1 C1 Cp1; F2 FC2 C2 CP2
15MCS	0.016	21.02	4.36	4	-9	617	Post- central midline	-1.8	2.5	Fz FCz Cz CPz; F1 FC1 C1 Cp1; F2 FC2 C2 CP2
16MCS	0.050	22.14	4.48	-13	-62	268	Middle/inf erior temporal left	-5.9	4.3	POz PO4 PO6 PO8; PO3 PO5 PO7; O1 Oz O2

Discussion

Our primary aim was to identify brain responses to subject's own name (SON) and others' names. We accomplished this by embedding SON stimuli in blocks of either others' names or reversed names to be sure that ERPs were in response to transient changes in the acoustic signal rather than fluctuations in brain state that may confound blocked experimental trials. We chose the contrast SON vs. others' names as these were the most similar conditions and differed in semantic salience. While the reversed names were part of the experimental paradigm, we did not contrast these trials directly with SON trials because any ERP differences could have been driven by either semantic or phonotactics differences. We did however utilize the SON trials that were embedded in the reversed name blocks. For the 10 control subjects we identified two main positive responses in keeping with previous studies: A) an early polarity positive response around 300ms, which is typically maximal in the frontal or central midline electrodes (Berlad and Pratt 1995); B) a later, also polarity positive, ERP between 600-800ms, also known as a "late slow wave" with left parietal topology (Holeckova, Fischer et al. 2006). The early response is deemed to reflect cognitive functions such as stimulus recognition and working memory updating (Coles, Gratton et al. 1988), (Polich 1987), while the late response is believed to occur during recollection and retrieval processes (Holeckova, Fischer et al. 2006). The topology of these two responses in our control subjects was consistent with the earlier studies cited above i.e. central for the early response and left-lateralized (parietal) for the later response. The magnitude and polarity of the effect (with others' names having a greater ERP response than SON) at 300ms is consistent with other passive paradigms (where subjects are asked to not attend specifically to the auditory stimuli (Hauger et al. 2015)). We chose a passive paradigm for the controls as we had no way of ascertaining whether patients would comply

with a more active paradigm (e.g.: one where they are asked to count the number of times that they hear their own name).

In our patient group, 4/16 (25%) had statistically significant responses to SON vs others' names. Two had a very similar topology to controls while two had an opposite polarity in response to others' names. Two pDOC patients had significant response in both time windows, while one subject only had an early response. The final responder had two peaks occurring a little earlier than the controls. The topology (given that these patients had all suffered some form of global brain injury) was reasonably consistent with the control data, with most patients having a maximal response centrally for the early component (although one was quite posterior e.g.: 2MCS) and left-lateralized topography for the later response (2/3). We focused specifically on the difference in response to subject's own name and the response to other first names; because we think this contrast is the most sensitive to detecting recognition of personalized information.

Our study extends those performed previously studies in this field through focussing on a salient contrast i.e. that between SON and others names. Fisher et al (Fischer, Dailler et al. 2008) assessed comatose rather than pDOC patients and found in 21 out of 51 a positive ERP to subject's own name at the latency of 602ms, 671ms and 722ms at Fz, Cz and Pz respectively. Others showed that pDOC patients had stronger ERP response to own name uttered by familiar voice (Holeckova, Fischer et al. 2006) (Del Giudice, Blume et al. 2016). Additionally, it was shown that pDOC patients in active condition such as counting down the SONs evoked stronger response than in unattended (passive) condition (Schnakers, Giacino et al. 2015) (Hauger, Schnakers et al. 2015). Furthermore, a strong response to a SON in pDOC patients was reported if a SON was contrasted against a meaningless sound (Demertzi, Vanhaudenhuyse et al. 2008).

Previously, Perrin et al (Perrin, Schnakers et al. 2006) and Schnakers et al (Schnakers, Perrin et al. 2008) showed that pDOC patients developed a delayed P300 response to SON, for instance, in VS patients the P300 was at 762ms, in MCS at 711ms, respectively.

Significant differences between brain responses to own versus others' names are unlikely to be due to any low-level auditory or even phonemic factors, but more plausibly to higher-level (auditory object) (Snyder, Gregg et al. 2012) detection, or to the personal and emotional salience associated with hearing one's own name; hence, the positive results we observed in a sub-group of patients may be an index of a certain level of self-awareness. In our study, the VS/UWS patient who demonstrated consistent an ERP response to his/her own name was diagnosed using the SMART assessment, and was not thought to have any behavioural responses indicating self-awareness, or awareness of the environment. The clinical EEG of this patient was dominated by delta rhythm, yet they had normal BAEPs and a significant ERP (albeit of the opposite polarity to controls) for others' names vs SON. This finding is supportive of previous studies, strongly suggesting that a minority of VS/UWS patients have islands of preserved cognitive function (Formisano, D'Ippolito et al. 2013).

Various psychological experiments have shown that hearing one's own name can lead to an increase in attention. For instance, by using shadowing procedures or distractions, Howarth and Ellis (Howarth and Ellis 1961) showed that the auditory threshold for perceiving one's own name was lower than for hearing other names. Others have suggested that there is a connection between one's name, personal identity, memory and attention (Dion 1983). The finding of a smaller ERP to the subject's own name is consistent with the predictive coding account of brain function that postulates that familiar stimuli are recognised more efficiently by the brain with associated error signals (a mismatch between expectation and sensory

information) being quashed more quickly and efficiently than those from unexpected or unpredictable stimuli (such as other peoples' names) (Garrido, Kilner et al. 2009).

The finding of a negative polarity response to others' names in two of the patients (13VS at 267 = -2.1mV; 15MCS at 350 = -4.1 mV, see figure 5 and table 3) was surprising and difficult to interpret, although a similar result is reported by Schnakers et al (Schnakers, Perrin et al. 2008) for DOC patients when listening passively to others' names (see Figure 5) with a negative peaking at around 400ms = -2.5mV. Perhaps, in these subjects, others' names are eliciting a form of MMN compared to own name (in our paradigm others' names were never interspersed with reversed names, as SON stimuli were).

Recently has it been proposed that proper assessment of brain function in pDOC patients requires person specific and person relevant stimuli. These stimuli, may be not only as mentioned above an auditory (SON); but can be visual, where pictures of one's own face are contrasted with unfamiliar faces (Laureys, Perrin et al. 2007). Clinic studies further suggest that person-relevant stimuli may be best for bedside and behavioural assessment. Cheng et al (Cheng, Gosseries et al. 2013) showed in eighty six VS/UWS subjects that using the patient's own name as opposed to a meaningless loud sound (i.e., ringing a bell), was more effective in evoking a localisation-to-sound response (i.e., turning eyes/head towards the sound source). Others have also suggested using personally meaningful stimuli for brain function assessment in pDOC patients, for instance, by using pre-injury personally relevant stimuli, such as patients' favourite music or similar (Perrin, Castro et al. 2015).

Nevertheless, the sensitivity of the use of EEG for detection of awareness is limited. It is known that some of the MCS patients or even healthy subjects do not respond on the event related

paradigms (Cruse, Chennu et al. 2012; Schnakers, Giacino et al. 2015). In our study only 3 out of 10 MCS patients responded. A multi-dimensional approach for an EEG assessment of brain function in pDOC patient using SON stimuli amongst others such as temporal attention, spatial attention, motor planning and detection of spatial incongruence may better access awareness in pDOC patients who are functionally locked in (Sergent, Faugeras et al. 2017). Recently, it was shown that the low-frequency power, EEG complexity, and information exchange derived from the EEG were deemed as reliable features of consciousness in patients with disorders of consciousness (King, Sitt et al. 2013) King and others (Sitt, King et al. 2014) suggested using EEG to assess an information sharing and signal propagation across distant sites of cortex, which can distinguish patients with various degree of consciousness impairment. The authors showed that information sharing was significantly lower in the VS/UWS patients regardless of aetiology of brain injury and time since onset. Not only EEG but also other methods such the transcranial magnetic stimulation technique and a Perturbational Complexity Index enables stratification patients into groups of VS/UWS versus MCS with high specificity and sensitivity (Casarotto, Comanducci et al. 2016).

An important limitation of the present study is that only 25% patients responded to a name paradigm and spatial localization of the responses was inconsistent within the subjects. However, this may be partially explained by the fact that we aimed to find the difference in brain responses to own name and other names. The EEG responses to this contrast have been localized within the superior medial frontal, temporal and parietal cortices that can be activated during self-referred stimuli (Knyazev 2013).

Another limitation of this study is that EEG signal was not reconstructed to assess cortical generators of scalp potentials, as was performed by Friston *et. al.* (Park and Friston 2013), who

shown that cortical processes implies a fast and effective dialogue between differentiated cortical areas. Salient stimuli, such as patient's own name can cause activation of subcortical structures, for instance, locus coeruleus. This would be, however, considered only as a preparation of cortical circuits for high-level cognitive processes, rather the actual cognitive processes. Hypothetically, a response in VS/UWS patients can be just caused the activation of subcortical structures, as the locus coeruleus, which prepare cortical circuits for high-level cognitive processes (Sara and Bouret). Hence, the fMRI technique is superior because of spacial localization of the BOLD signal. A fMRI study showed widespread activation to the SON of the posterior network: the middle temporal cortex, left superior temporal cortex, middle occipital gyrus and cuneus as well in frontal cortex (Carmody and Lewis 2006). The feasibility of the use of fMRI and SON stimuli for the outcome prediction in TBI VS/UWS patients was shown by Wang et al (Wang, Di et al. 2015). Since both techniques are complementary, the use of both the fMRI and EEG could help to determine the sensitivity and specificity of EEG.

Conclusion

The results from our study suggest that names can be powerful stimuli for brain function assessment in pDOC patients, especially, if the response to SON is contrasted to a response to any other name. One out of five VS/UWS patients responded to this stimulus, indicating at least partial self-awareness. This study shows that EEG can be a robust technique for brain function assessment and be complementary with a gold standard bedside assessment.

Conflict of Interest Statement.

The Authors declare that there is no conflict of interest.

Acknowledgements

The authors thank to the staff of the Royal Hospital for Neuro-disability for their availability and volunteering in the study. The authors also wanted to thank the relatives and the patients for their assistance in participating in this study. AMK and KY are funded by a Neuro-disability Research Trust. SFF and APL acknowledge support from the UCLH Biomedical Research Centre.

References

- Arnell, K. M., K. L. Shapiro, et al. (1999). "Reduced repetition blindness for one's own name." Visual Cognition **6**(6): 609-635.
- Berlad, I. and H. Pratt (1995). "P300 in response to the subject's own name." Electroencephalogr Clin Neurophysiol **96**(5): 472-474.
- Boly, M., M. I. Garrido, et al. (2011). "Preserved feedforward but impaired top-down processes in the vegetative state." Science **332**(6031): 858-862.
- Carmody, D. P. and M. Lewis (2006). "Brain activation when hearing one's own and others' names." Brain Res **1116**(1): 153-158.
- Casarotto, S., A. Comanducci, et al. (2016). "Stratification of unresponsive patients by an independently validated index of brain complexity." Ann Neurol **80**(5): 718-729.
- Cavinato, M., C. Volpato, et al. (2011). "Event-related brain potential modulation in patients with severe brain damage." Clin Neurophysiol **122**(4): 719-724.
- Cheng, L., O. Gosseries, et al. (2013). "Assessment of localisation to auditory stimulation in post-comatose states: use the patient's own name." BMC Neurol **13**: 27.

- Coleman, M. R., M. H. Davis, et al. (2009). "Towards the routine use of brain imaging to aid the clinical diagnosis of disorders of consciousness." *Brain* **132**(Pt 9): 2541-2552.
- Coleman, M. R., J. M. Rodd, et al. (2007). "Do vegetative patients retain aspects of language comprehension? Evidence from fMRI." *Brain* **130**(Pt 10): 2494-2507.
- Coles, M. G., G. Gratton, et al. (1988). "Detecting early communication: using measures of movement-related potentials to illuminate human information processing." *Biol Psychol* **26**(1-3): 69-89.
- Cruse, D., S. Beukema, et al. (2014). "The reliability of the N400 in single subjects: implications for patients with disorders of consciousness." *Neuroimage Clin* **4**: 788-799.
- Cruse, D., S. Chennu, et al. (2011). "Bedside detection of awareness in the vegetative state: a cohort study." *Lancet* **378**(9809): 2088-2094.
- Cruse, D., S. Chennu, et al. (2012). "Relationship between etiology and covert cognition in the minimally conscious state." *Neurology* **78**(11): 816-822.
- Del Giudice, R., C. Blume, et al. (2016). "Can self-relevant stimuli help assessing patients with disorders of consciousness?" *Conscious Cogn* **44**: 51-60.
- Demertzi, A., A. Vanhaudenhuyse, et al. (2008). "Is there anybody in there? Detecting awareness in disorders of consciousness." *Expert Rev Neurother* **8**(11): 1719-1730.
- Dion, K. L. (1983). "Names, Identity, and Self." *A Journal of Onomastics* **31:4**, : 245-257,.
- Fischer, C., F. Dailler, et al. (2008). "Novelty P3 elicited by the subject's own name in comatose patients." *Clin Neurophysiol* **119**(10): 2224-2230.
- Formisano, R., M. D'Ippolito, et al. (2013). "Functional locked-in syndrome as recovery phase of vegetative state." *Brain Inj* **27**(11): 1332.
- Garrido, M. I., J. M. Kilner, et al. (2009). "The mismatch negativity: a review of underlying mechanisms." *Clin Neurophysiol* **120**(3): 453-463.
- Giacino, J. T., S. Ashwal, et al. (2002). "The minimally conscious state: definition and diagnostic criteria." *Neurology* **58**(3): 349-353.
- Giacino, J. T., K. Kalmar, et al. (2004). "The JFK Coma Recovery Scale-Revised: measurement characteristics and diagnostic utility." *Arch Phys Med Rehabil* **85**(12): 2020-2029.
- Gill-Thwaites, H. and R. Munday (2004). "The Sensory Modality Assessment and Rehabilitation Technique (SMART): a valid and reliable assessment for vegetative state and minimally conscious state patients." *Brain Inj* **18**(12): 1255-1269.
- Hauger, S. L., C. Schnakers, et al. (2015). "Neurophysiological Indicators of Residual Cognitive Capacity in the Minimally Conscious State." *Behav Neurol* **2015**: 145913.
- Holeckova, I., C. Fischer, et al. (2006). "Brain responses to a subject's own name uttered by a familiar voice." *Brain Res* **1082**(1): 142-152.
- Howarth, C. I. and K. Ellis (1961). "The relative intelligibility threshold for one's own name compared with other names." *Quarterly journal of experimental psychology* **13**(4): 236-239.

- Jennett, B. and F. Plum (1972). "Persistent vegetative state after brain damage." RN **35**(10): ICU1-4.
- King, J. R., J. D. Sitt, et al. (2013). "Information sharing in the brain indexes consciousness in noncommunicative patients." Curr Biol **23**(19): 1914-1919.
- Knyazev, G. G. (2013). "EEG correlates of self-referential processing." Front Hum Neurosci **7**: 264.
- Koessler, L., L. Maillard, et al. (2009). "Automated cortical projection of EEG sensors: anatomical correlation via the international 10-10 system." Neuroimage **46**(1): 64-72.
- Laureys, S., G. G. Celesia, et al. (2010). "Unresponsive wakefulness syndrome: a new name for the vegetative state or apallic syndrome." BMC Med **8**: 68.
- Laureys, S., F. Perrin, et al. (2007). "Self-consciousness in non-communicative patients." Conscious Cogn **16**(3): 722-741; discussion 742-725.
- Leff, A. P., T. M. Schofield, et al. (2008). "The cortical dynamics of intelligible speech." J Neurosci **28**(49): 13209-13215.
- Litvak, V., J. Mattout, et al. (2011). "EEG and MEG data analysis in SPM8." Comput Intell Neurosci **2011**: 852961.
- Monti, M. M., A. Vanhaudenhuyse, et al. (2010). "Willful modulation of brain activity in disorders of consciousness." N Engl J Med **362**(7): 579-589.
- Moray, N. (1959). "Attention in dichotic listening: Affective cues and the influence of instructions." Quarterly journal of experimental psychology **11**(1): 56-60.
- Owen, A. M., M. R. Coleman, et al. (2006). "Detecting awareness in the vegetative state." Science **313**(5792): 1402.
- Park, H. J. and K. Friston (2013). "Structural and functional brain networks: from connections to cognition." Science **342**(6158): 1238411.
- Perrin, F., M. Castro, et al. (2015). "Promoting the use of personally relevant stimuli for investigating patients with disorders of consciousness." Front Psychol **6**: 1102.
- Perrin, F., C. Schnakers, et al. (2006). "Brain response to one's own name in vegetative state, minimally conscious state, and locked-in syndrome." Arch Neurol **63**(4): 562-569.
- Polich, J. (1987). "Task difficulty, probability, and inter-stimulus interval as determinants of P300 from auditory stimuli." Electroencephalogr Clin Neurophysiol **68**(4): 311-320.
- Polich, J. (2007). "Updating P300: an integrative theory of P3a and P3b." Clin Neurophysiol **118**(10): 2128-2148.
- RCP (2013) "Prolonged disorders of consciousness National clinical guidelines."
- Risetti, M., R. Formisano, et al. (2013). "On ERPs detection in disorders of consciousness rehabilitation." Front Hum Neurosci **7**: 775.
- Rousselet, G. A., J. J. Foxe, et al. (2016). "A few simple steps to improve the description of group results in neuroscience." Eur J Neurosci **44**(9): 2647-2651.

- Sara, Susan J. and S. Bouret "Orienting and Reorienting: The Locus Coeruleus Mediates Cognition through Arousal." Neuron **76**(1): 130-141.
- Schnakers, C., J. T. Giacino, et al. (2015). "Preserved covert cognition in noncommunicative patients with severe brain injury?" Neurorehabil Neural Repair **29**(4): 308-317.
- Schnakers, C., F. Perrin, et al. (2008). "Voluntary brain processing in disorders of consciousness." Neurology **71**(20): 1614-1620.
- Sergent, C., F. Faugeras, et al. (2017). "Multidimensional cognitive evaluation of patients with disorders of consciousness using EEG: A proof of concept study." Neuroimage Clin **13**: 455-469.
- Sitt, J. D., J. R. King, et al. (2014). "Large scale screening of neural signatures of consciousness in patients in a vegetative or minimally conscious state." Brain **137**(Pt 8): 2258-2270.
- Snyder, J. S., M. K. Gregg, et al. (2012). "Attention, awareness, and the perception of auditory scenes." Front Psychol **3**: 15.
- Turner-Stokes, L. (2014). "Prolonged disorders of consciousness: new national clinical guidelines from the Royal College of Physicians, London." Clin Med (Lond) **14**(1): 4-5.
- Turner-Stokes, L., J. Kitzinger, et al. (2012). "fMRI for vegetative and minimally conscious states." BMJ **345**: e8045.
- Tusa, R. J., W. F. Stewart, et al. (1994). "Longitudinal study of brainstem auditory evoked responses in 87 normal human subjects." Neurology **44**(3 Pt 1): 528-532.
- Wang, F., H. Di, et al. (2015). "Cerebral response to subject's own name showed high prognostic value in traumatic vegetative state." BMC Med **13**: 83.

Highlights

1. Approximately 25% of patients in disorders of consciousness retain ability to respond to own first name using electroencephalography
2. Timing and topography of these responses is in keeping with control subjects data
- 3 The use semantically salient stimuli, such as one's own name may give additional information when assessing brain function in pDOC patients