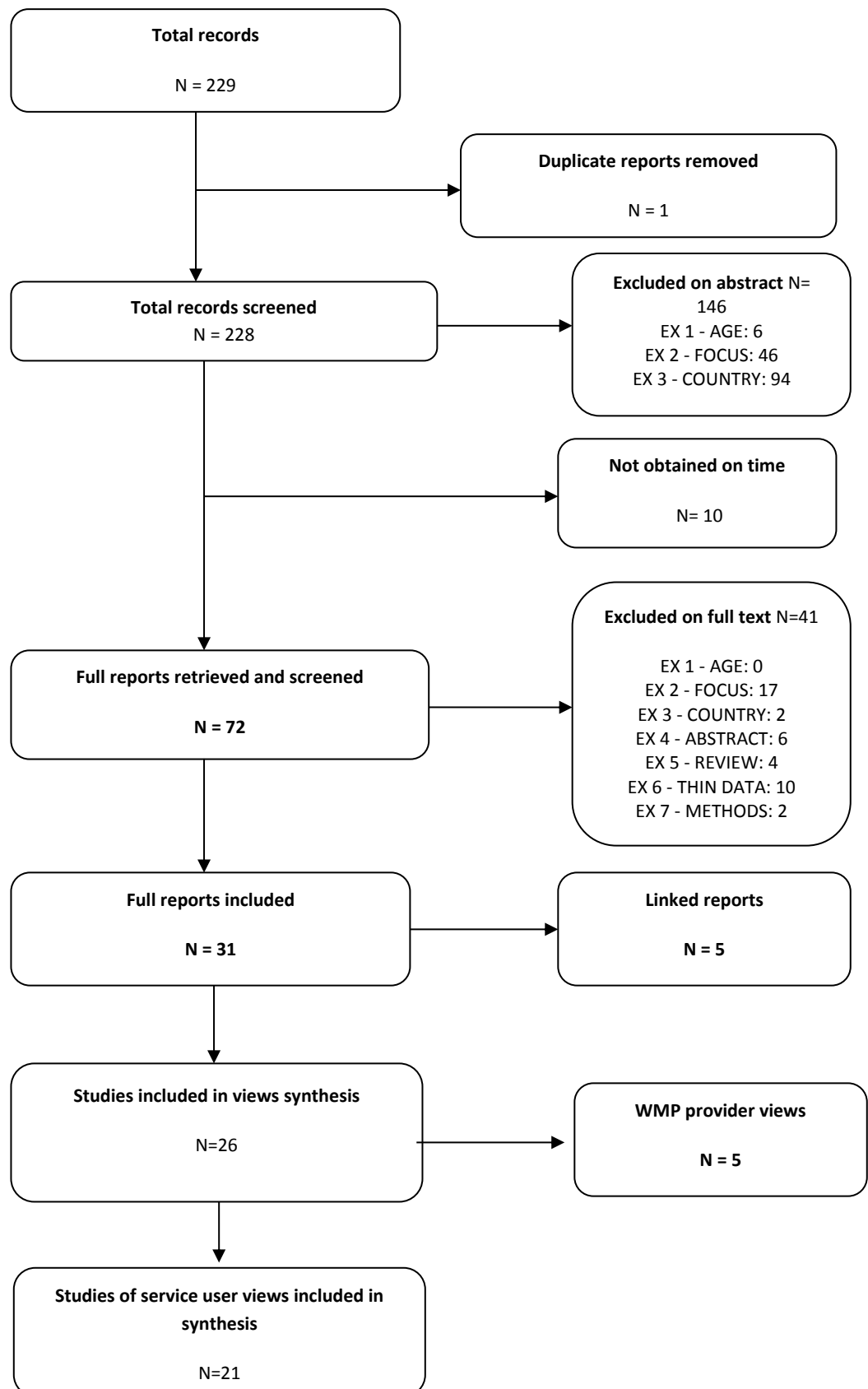


## Supporting information - Flow of literature through the review: identification of views studies



### Criteria on which reports excluded (abstract and full text)

EX 1 - AGE - not adults ( $\geq 18$  years)

EX 2 - FOCUS - No views, perceptions or beliefs of adults towards weight management programmes for overweight adults

EX 3 - COUNTRY - Study not conducted in the UK

EX 4 - ABSTRACT - conference abstract only

EX 5 - REVIEW - review of studies

EX 6 - THIN DATA - views on weight management programmes limited

EX 7 - METHODS - Study methods poorly reported