

## Supplementary Online Content

eAppendix 1: Search terms

eTable 1: Quality assessment by Newcastle-Ottawa Scale

eFigure 1a: Prenatal antidepressants user vs non-user (crude estimate)

eFigure 1b: Previous antidepressants user vs non-user (crude estimate)

eFigure 1c: Maternal psychiatric conditions (crude estimate)

eFigure 2a: First trimester antidepressants user vs non-user (adjusted estimate)

eFigure 2b: Second trimester antidepressants user vs non-user (adjusted estimate)

eFigure 2c: Third trimester antidepressants user vs non-user (adjusted estimate)

eFigure 3a: Sensitivity analysis of prenatal antidepressants user vs non-user (crude estimate)

eFigure 3b: Sensitivity analysis of prenatal antidepressants user vs non-user (adjusted estimate)

eFigure 4a: Sensitivity analysis of previous antidepressants user vs non-user (crude estimate)

eFigure 4b: Sensitivity analysis of previous antidepressants user vs non-user (adjusted estimate)

eFigure 5a: Sensitivity analysis of maternal psychiatric conditions (crude estimate)

eFigure 5b: Sensitivity analysis of maternal psychiatric conditions (adjusted estimate)

eFigure 6a: Sensitivity analysis: first trimester antidepressants user vs non-user (adjusted estimate)

eFigure 6b: Sensitivity analysis: second trimester antidepressants user vs non-user (adjusted estimate)

eFigure 6c: Sensitivity analysis: third trimester antidepressants user vs non-user (adjusted estimate)

eTable 2: Sensitivity analysis: results of meta-analyses by restricting studies to Malm et al., Man et al. and Sujan et al.

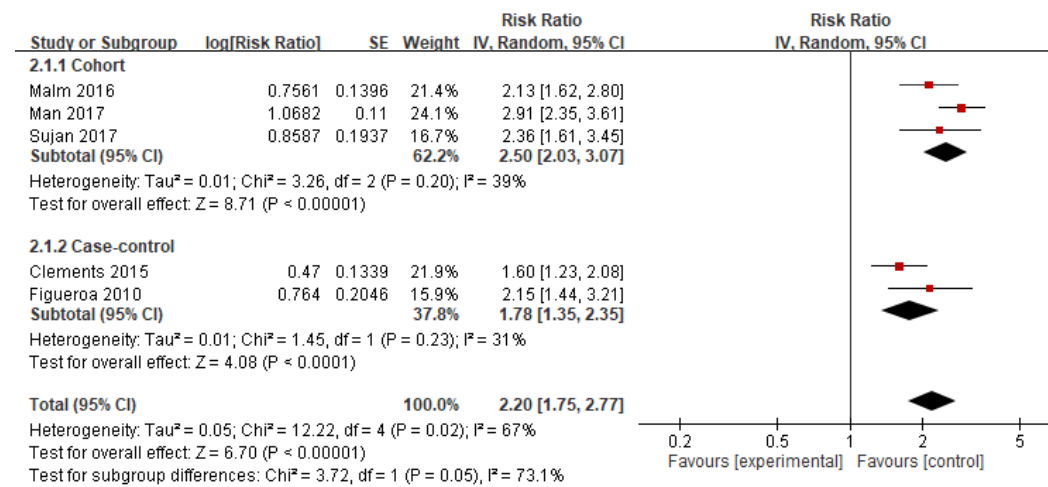
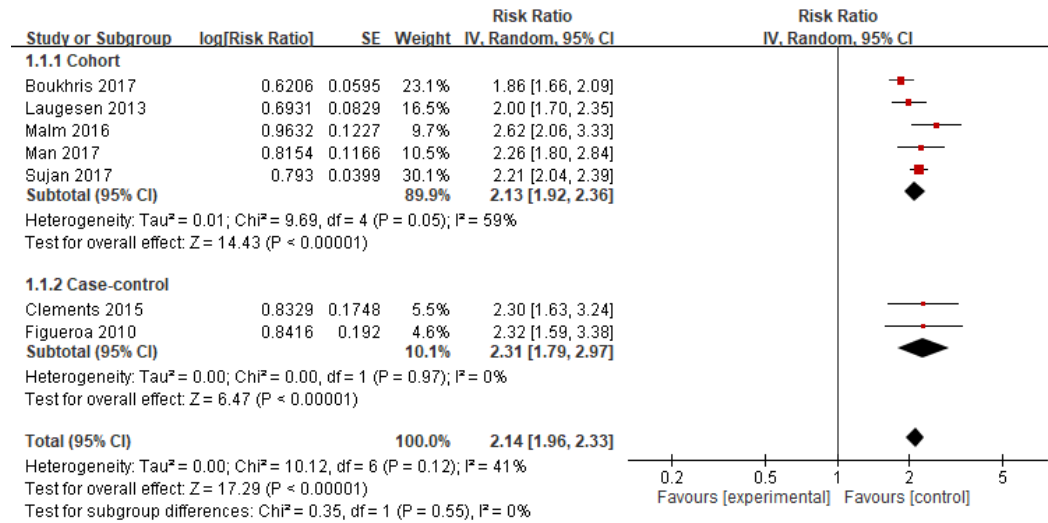
## **eAppendix 1: Search terms**

(Depressive disorder/drug therapy OR antidepressive agent\* OR antidepressant\* OR Selective serotonin reuptake inhibitor\* OR SSRI\* OR serotonin uptake inhibitor\* OR serotonin OR fluoxetine OR citalopram OR paroxetine OR sertraline OR fluvoxamine OR escitalopram OR vortioxetine OR Serotonin norepinephrine reuptake inhibitor\* OR SNRI\* OR duloxetine OR levomilnacipran OR venlafaxine OR desvenlafaxine OR milnacipran OR Tricyclic antidepressant\* OR TCA\* OR amitriptyline OR doxepin OR imipramine OR Trimipramine OR nortriptyline OR amoxapine OR desipramine OR protriptyline OR clomipramine OR dosulepin OR lofepramine OR Monoamine oxidase inhibitor\* OR MAOI\* OR MAO inhibitor\* OR isocarboxazid OR phenelzine OR selegiline OR tranylcypromine OR moclobemide OR Trazodone OR nefazodone OR mirtazapine OR bupropion OR vilazodone OR agomelatine OR mianserin OR reboxetine OR flupentixol OR maprotiline) AND (pregnant women OR pregnant woman OR pregnan\* OR pregnancy complications/drug therapy) AND (ADHD\* OR attention deficit\* OR hyperactivity disorder\* OR attention deficit hyperactivity disorder\* OR hyperkinetic\* OR hyperactiv\* OR inattent\* OR impuls\*)

**eTable 2: Quality assessment by Newcastle-Ottawa Scale**

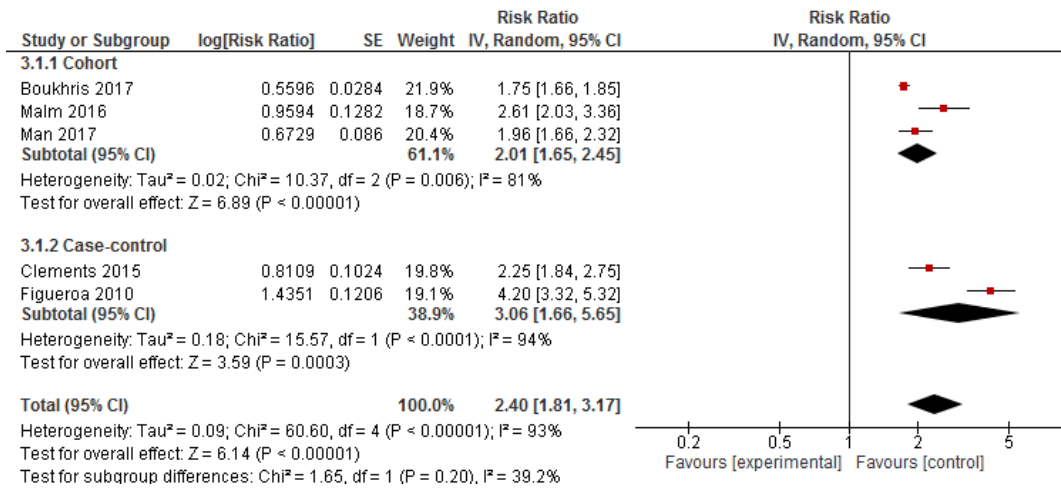
<b>Study</b>	<b>Study Design</b>	<b>Selection</b>	<b>Comparability</b>	<b>Exposure/Outcome</b>	<b>Total</b>
Boukhris 2017	Cohort	****	**	*	7
Castro 2016	Case-control	**	**	***	7
Clements 2015	Case-control	**	**	***	7
Figuroa 2010	Case-control	****	**	**	8
Laugesen 2013	Cohort	****	**	*	7
Malm 2016	Cohort	****	**	*	7
Man 2017	Cohort	****	**	***	9
Sujan 2017	Cohort	****	**	*	7

**eFigure 1a: Prenatal antidepressants user vs non-user (crude estimate)**

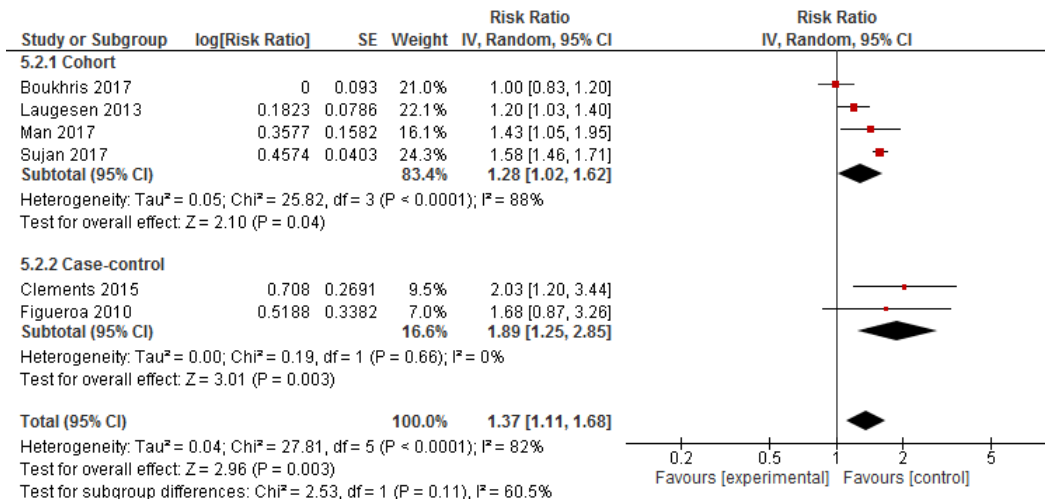


**eFigure 1b: Previous antidepressants user vs non-user (crude estimate)**

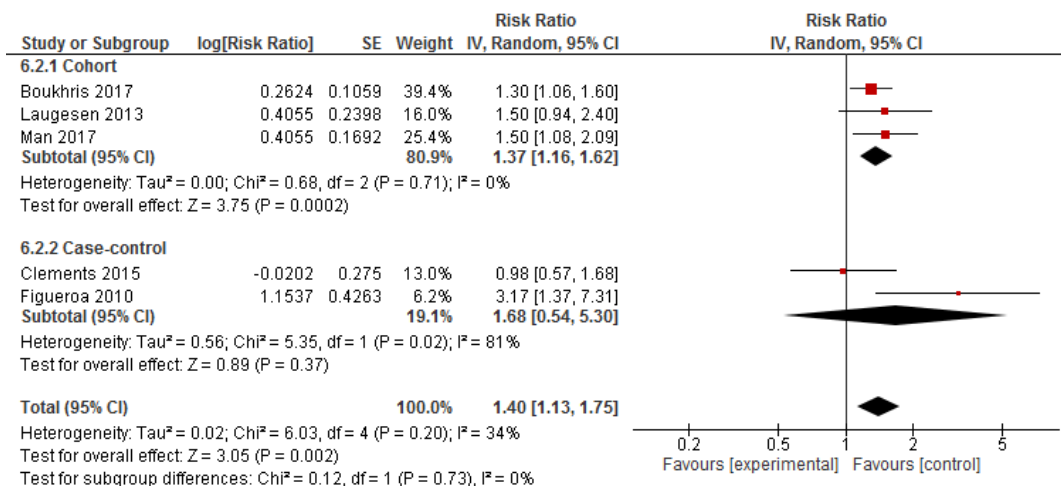
**eFigure 1c: Maternal psychiatric conditions (crude estimate)**



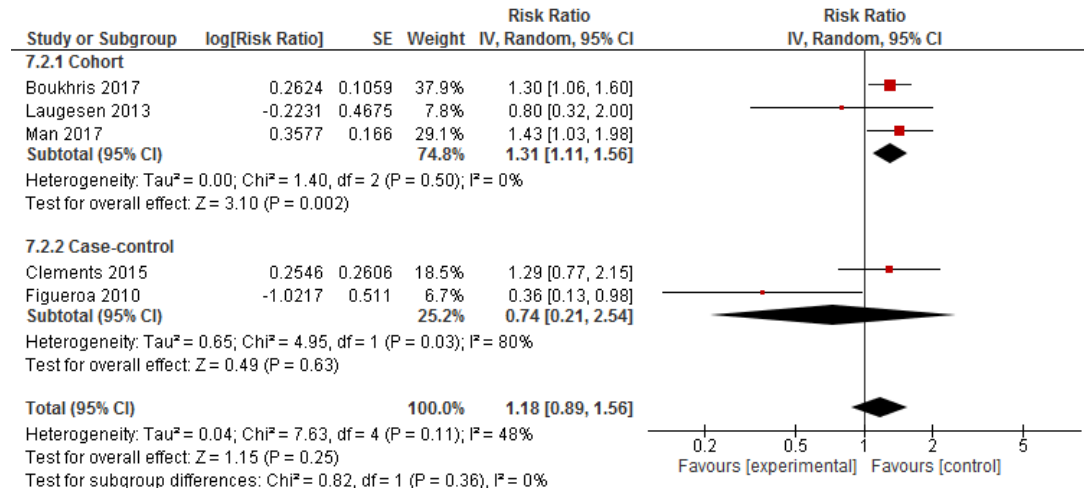
**eFigure 2a: First trimester antidepressants user vs non-user (adjusted estimate)**



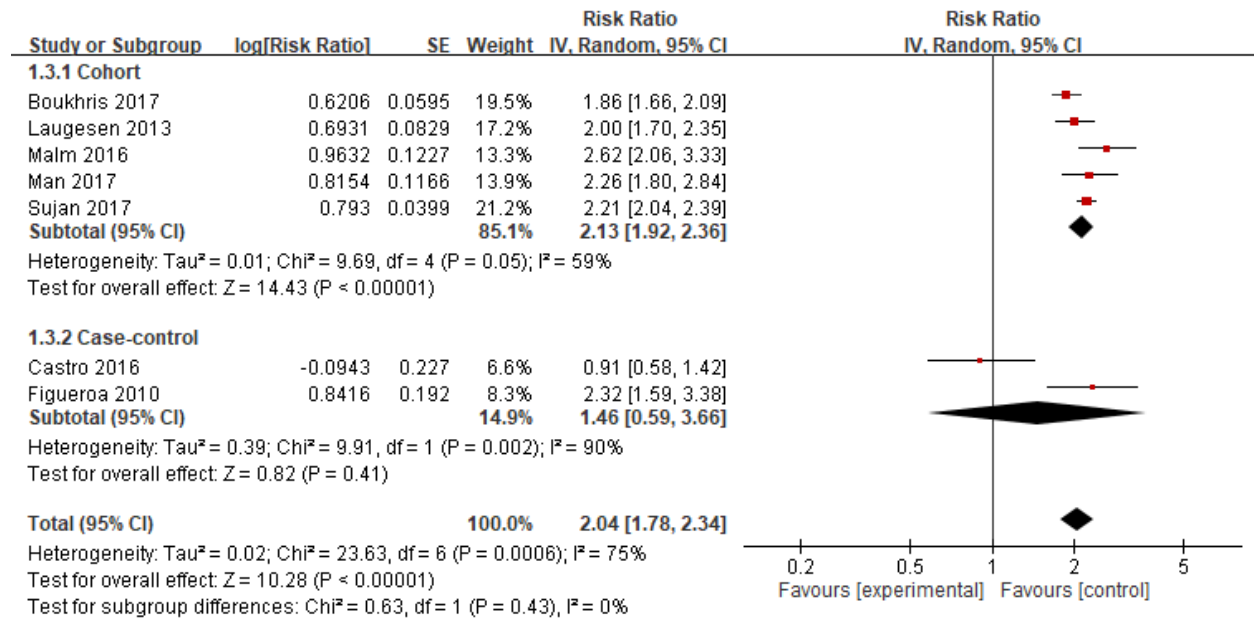
**eFigure 2b: Second trimester antidepressants user vs non-user (adjusted estimate)**



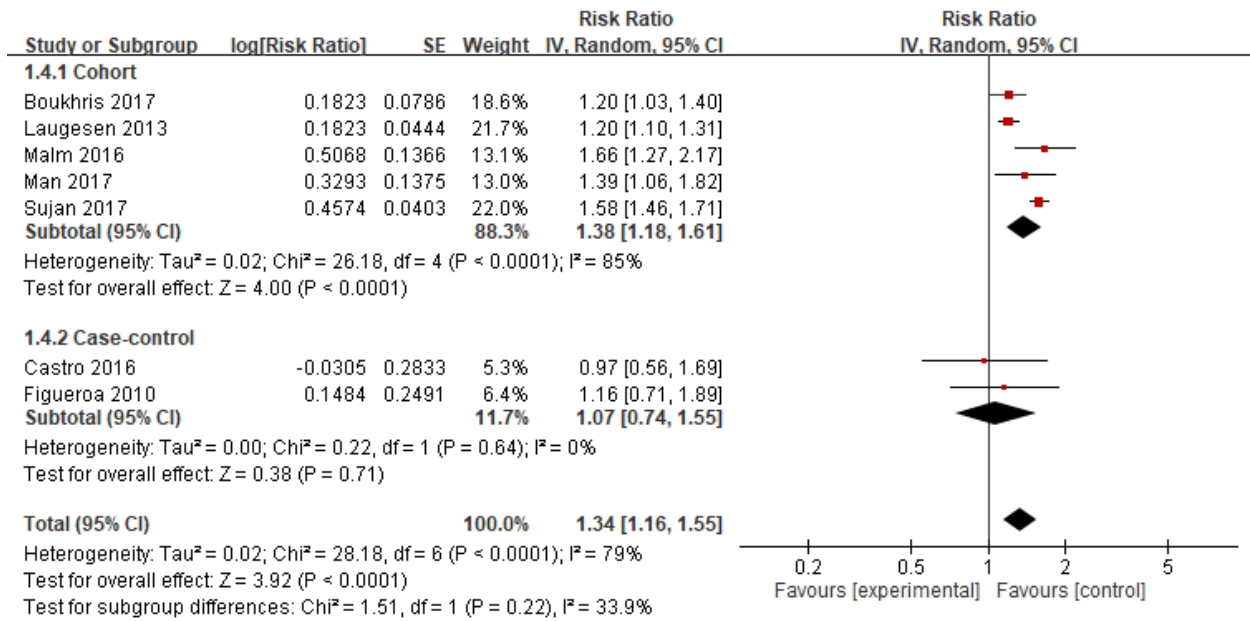
**eFigure 2c: Third trimester antidepressants user vs non-user (adjusted estimate)**



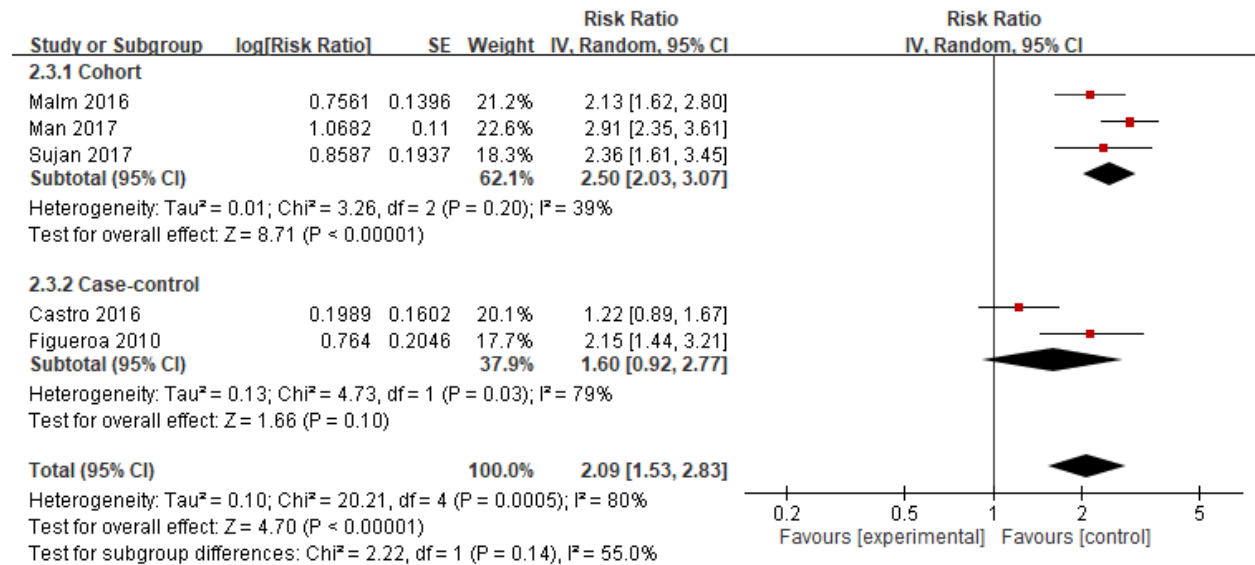
**eFigure 3a: Sensitivity analysis of prenatal antidepressants user vs non-user (crude estimate)**



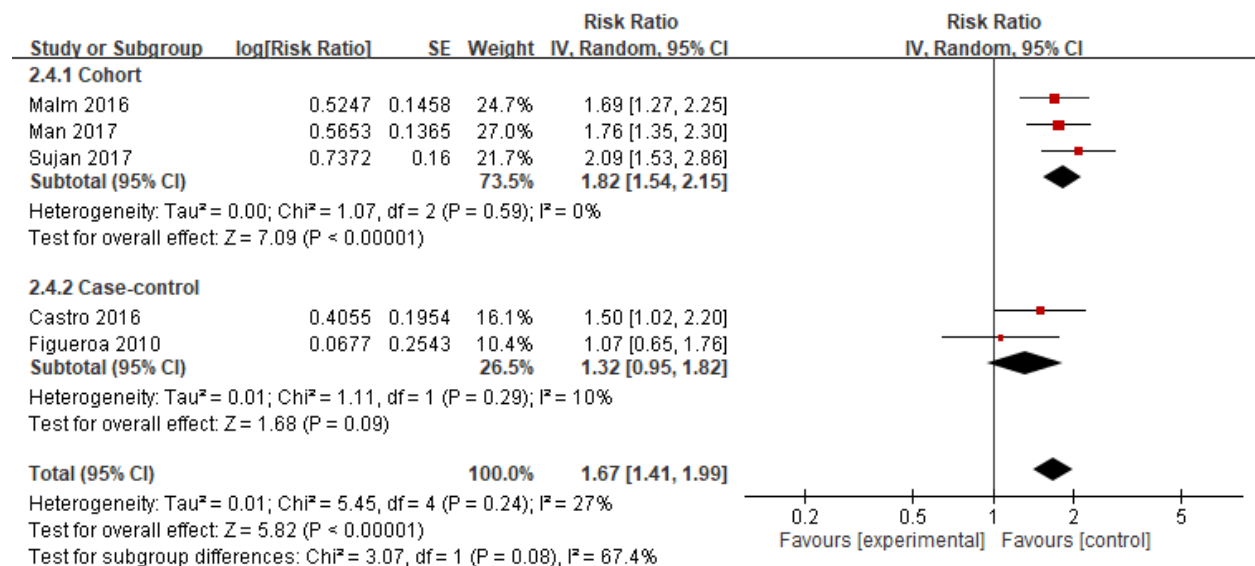
**eFigure 3b: Sensitivity analysis of prenatal antidepressants user vs non-user (adjusted estimate)**



**eFigure 4a: Sensitivity analysis of previous antidepressants user vs non-user (crude estimate)**

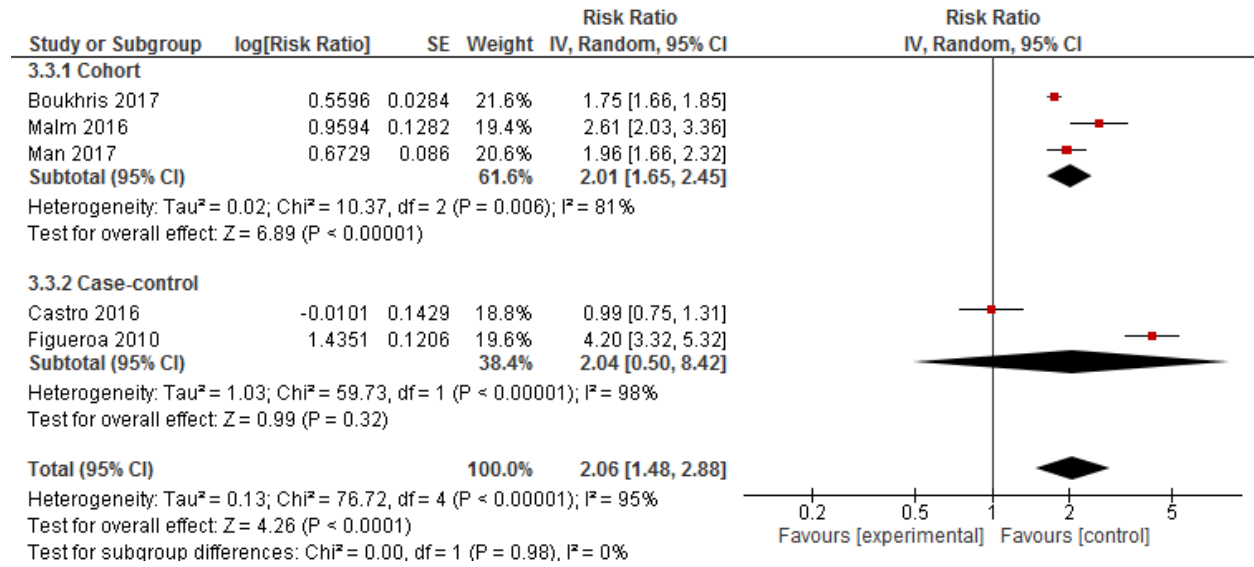


**eFigure 4b: Sensitivity analysis of previous antidepressants user vs non-user (adjusted estimate)**

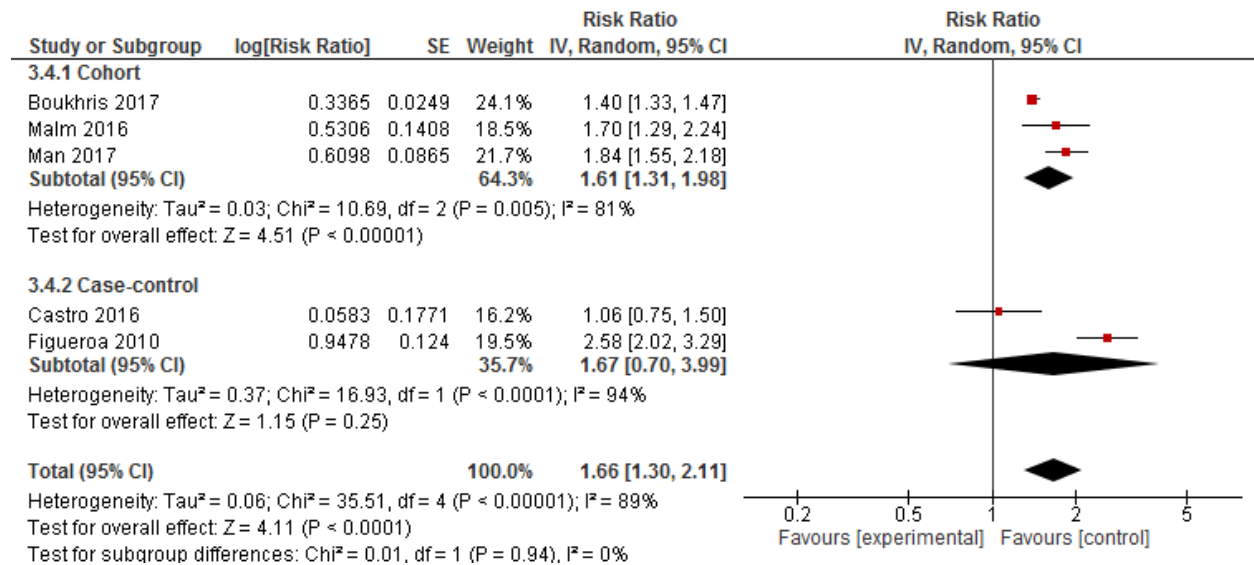




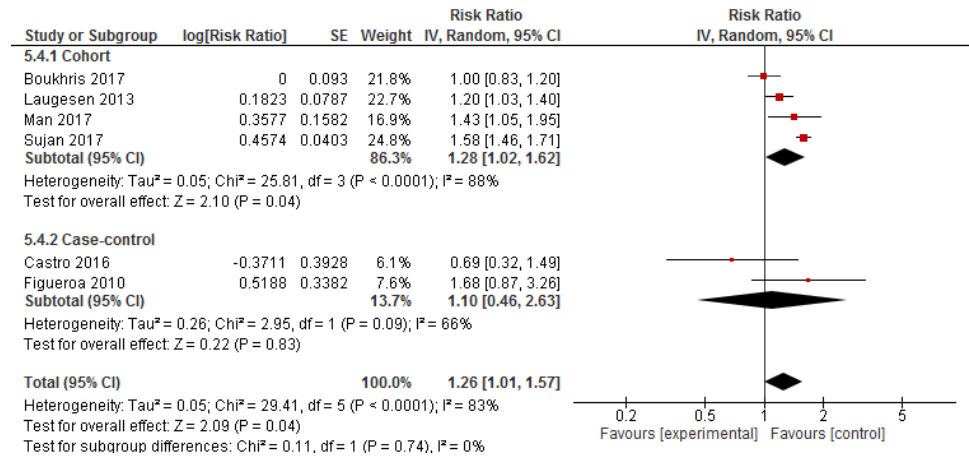
**eFigure 5a: Sensitivity analysis of maternal psychiatric conditions (crude estimate)**



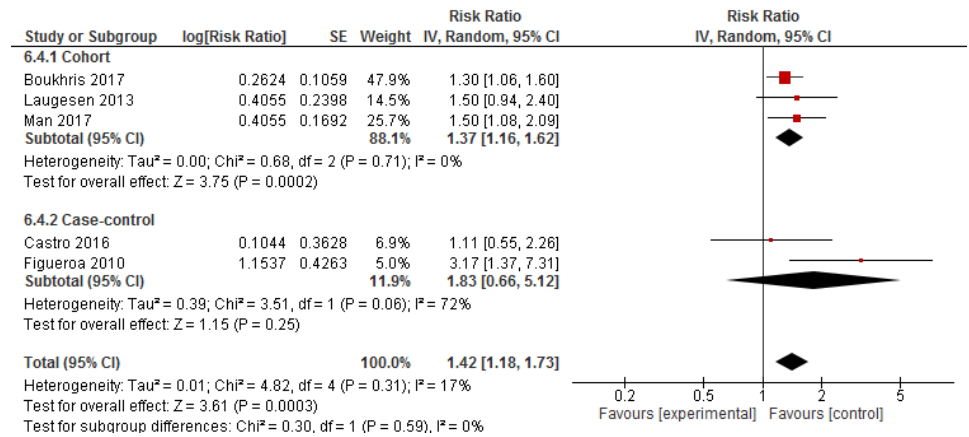
**eFigure 5b: Sensitivity analysis of maternal psychiatric conditions (adjusted estimate)**



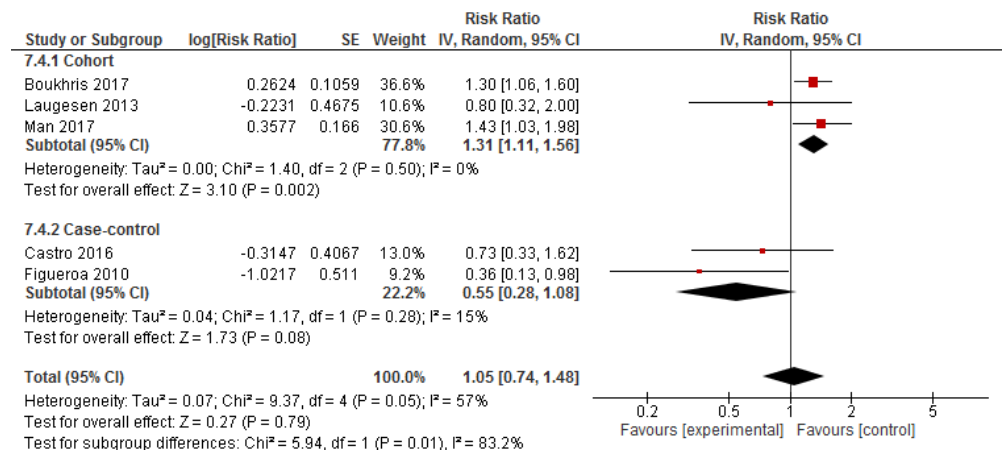
**eFigure 6a: Sensitivity analysis: first trimester antidepressants user vs non-user (adjusted estimate)**



**eFigure 6b: Sensitivity analysis: second trimester antidepressants user vs non-user (adjusted estimate)**



**eFigure 6c: Sensitivity analysis: third trimester antidepressants user vs non-user (adjusted estimate)**



**eTable 2: Sensitivity analysis: results of meta-analyses by restricting studies to Malm et al., Man et al. and Sujan et al.**

Exposure	Adjusted Risk Ratio	95% confidence interval	I <sup>2</sup>
Prenatal Exposure	1.57	1.46 to 1.69	0%
Previous Exposure	1.82	1.54 to 2.15	0%
Maternal Psychiatric Conditions	1.80	1.56 to 2.08	0%