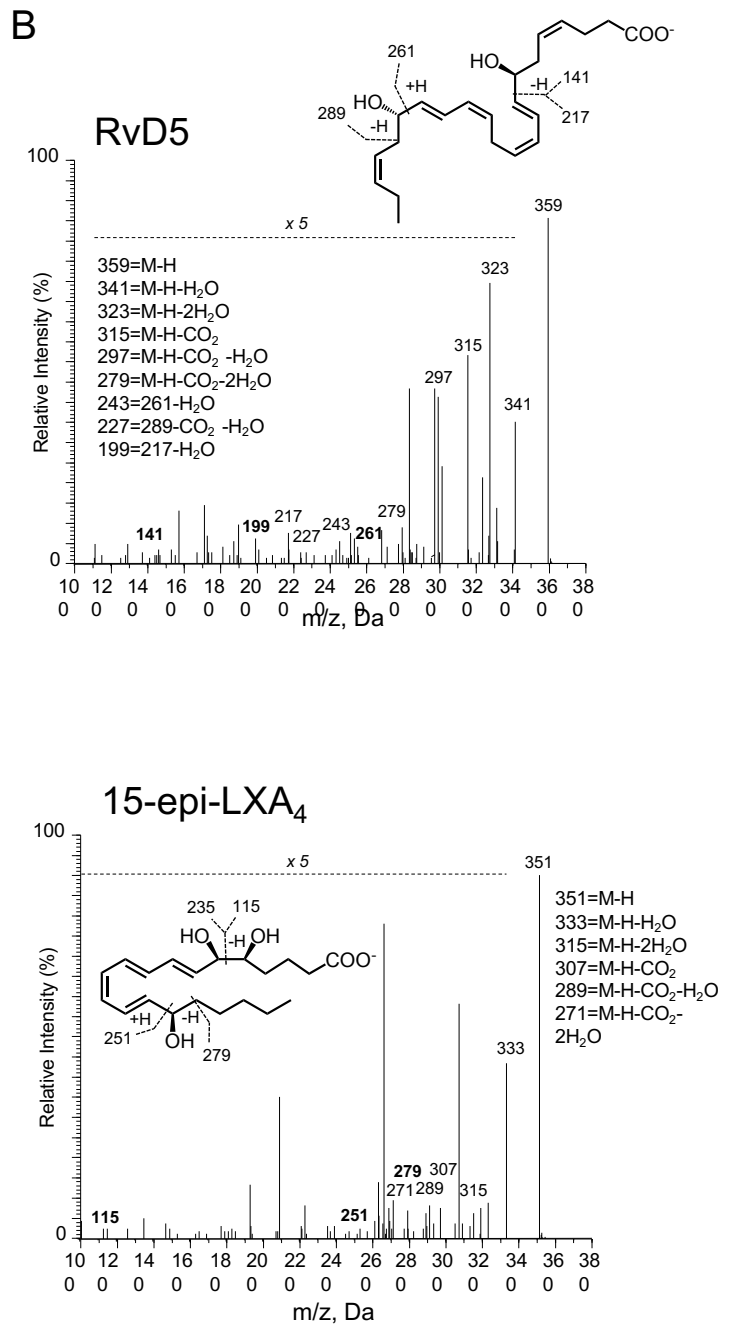
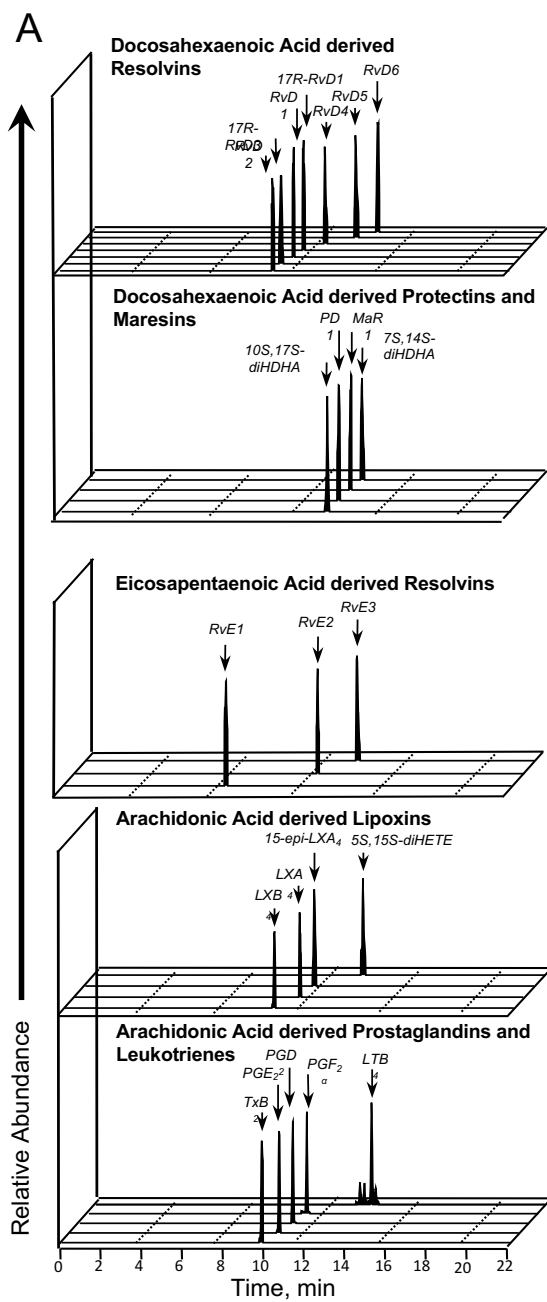


**S1 Fig**



**S1 Fig: Elicited blister exudate lipid mediator profile.** Elicited blister exudates were collected at the indicated intervals and placed in ice-cold methanol containing deuterium labeled internal standards. Lipid mediators (LM) were extracted, identified and quantified using LM profiling (see methods for details). (A) Representative MRM for identified LM, (B) MS-MS spectra used for the identification of RvD5 and 15-epi-LXA<sub>4</sub>.