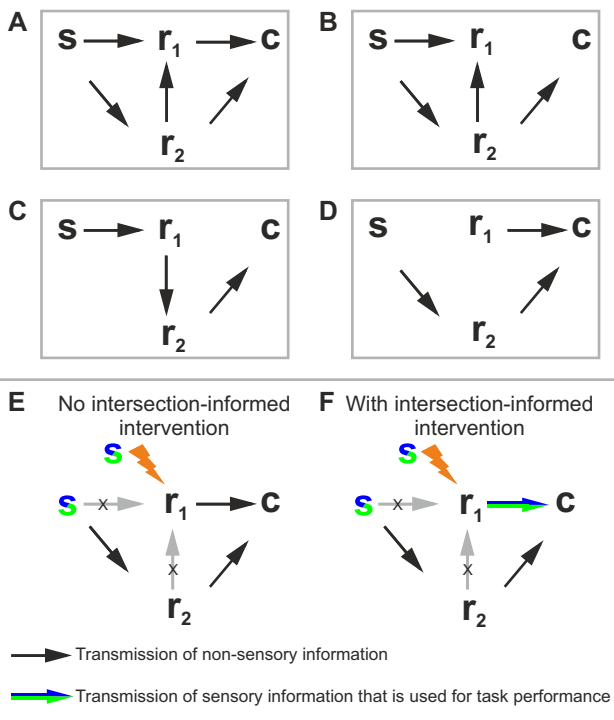
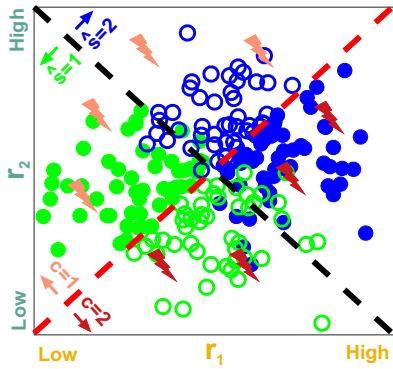


--- Sensory boundary ● Correct choice $c=1$ with $s=1$ ● Correct choice $c=2$ with $s=2$
 --- Decision boundary ○ Incorrect choice $c=2$ with $s=1$ ○ Incorrect choice $c=1$ with $s=2$

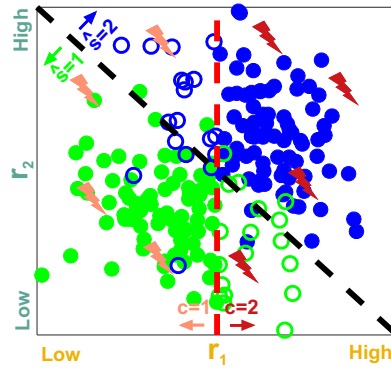
Permissive and instructive roles in coding and information flow



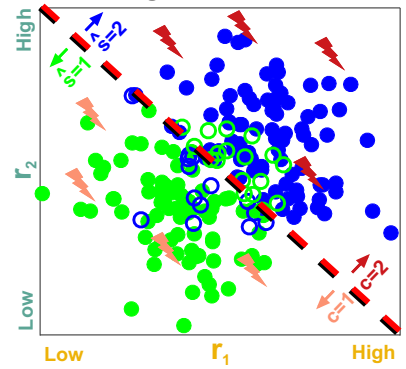
A Null (chance) intersection



B Intermediate intersection



C Large intersection



⚡ Intervention-imposed r_1, r_2 values eliciting $c=1$ - - - Sensory boundary ● Correct choice $c=1$ with $s=1$ ● Correct choice $c=2$ with $s=2$
⚡ Intervention-imposed r_1, r_2 values eliciting $c=2$ - - - Decision boundary ○ Incorrect choice $c=2$ with $s=1$ ○ Incorrect choice $c=1$ with $s=2$

